

 **ACURA**  
PRECISION CRAFTED PERFORMANCE



**INTEGRA** 2019 **X**



When you're focused on performance, your imagination sees possibilities everywhere. That perspective created the ILX, a driver-centric approach to engineering we call Precision Crafted Performance. With it, every curve in the road, every parking garage ramp, every tight roundabout, and every wide-open passing lane is an opportunity to enjoy a premium performance experience. Welcome to one of our most spirited vehicles, the 2019 Acura ILX.

# MAKE EVERY CORNER YOUR FAVORITE CORNER

3 \ DESIGN



ILX with Technology and A-Spec Packages shown in Apex Blue Pearl.

4





ILX shown in Modern Steel Metallic.



ILX with Technology and A-Spec Packages shown in Majestic Black Pearl.

#### IT DOESN'T JUST LOOK THE PART

The new 2019 ILX sets the stage for premium performance well before you enter the driver's seat. Its low, wide, athletic stance communicates the corner-hungry nature of the sport sedan. A focus on performance is furthered through available 18-inch, Shark-Gray, noise-reducing wheels, while up front, the bold Diamond Pentagon Grille flanked by chiseled Jewel Eye® LED headlights welcomes all with a face that says "Let's go find some corners."



# A-SPEC

## SUPERHEROES GET CAPES. THE ILX GETS A-SPEC

Confidence creates performance. How we appoint a car, the style we add to it, creates the confidence we feel about it. Inside and out, the ILX A-Spec® is appointed with high-performance style.

It begins up front with dark Jewel Eye LED headlights flanking a grille finished with black chrome accents as well as a matte graphite insert. Style is furthered along the sides, with underbody spoilers as well as impressive 18-inch Shark Gray 15-spoke wheels. And in the back, a piano-black diffuser and a decklid spoiler add to the spirited styling.

# A-SPEC



Inside the ILX, A-Spec appointments instantly communicate its high-performance focus. At the driver's feet, stainless steel sport pedals offer a race-boot-ready style, while seats finished with perforated Ultrasuede® inserts and contrast stitching add to the performance-focused attitude. Above, a black headliner increases the dramatic effect of the red-illuminated instrument panel, and throughout the cabin, A-Spec badging alerts everyone to the coming thrills.





## QUIET ENOUGH TO HEAR YOUR ELEVATED HEARTBEAT

When you drive a car as spirited as the ILX, running up and down the 8-speed Dual-Clutch Transmission doesn't just keep the engine revs high, but it keeps your heart rate high as well.

Thankfully, Active Sound Control, standard on every ILX, dramatically reduces unwanted noise so you can find additional inspiration in the spirited engine notes. It's a focus on performance matched in comfort with an array of premium materials, including a leather-wrapped steering wheel and shift knob.

As well, dual-zone, automatic climate control, complete with humidity control and multilevel heated front seats, further improves everyone's comfort. And to empower the driver, an available 7-inch LED backlit touchscreen manages everything from phone to audio to vehicle information.



## IF YOU CAN'T REMEMBER YOUR FIRST ROLLER COASTER, YOU WILL

More than horsepower, more than torque, more than prestige, a liquid-smooth, blink-fast transmission is what makes a premium performance sedan thrilling. Inside the ILX, perfectly mated to its purposely lightweight and ultrasensitive 201-hp i-VTEC® inline-4-cylinder engine, is a masterpiece of a transmission: the industry's first 8-speed Dual-Clutch Transmission (DCT) with a torque converter. The technology was born on the racetrack, and the fast and smooth shifts of the ILX's DCT directly connect the driver to the car and road. It's a connection that optimizes not just horsepower, but also every turn, every exit ramp, every roundabout, every parking garage, every side alley, every single drive, turning even the most routine driving moments into some of the most thrilling of your day.

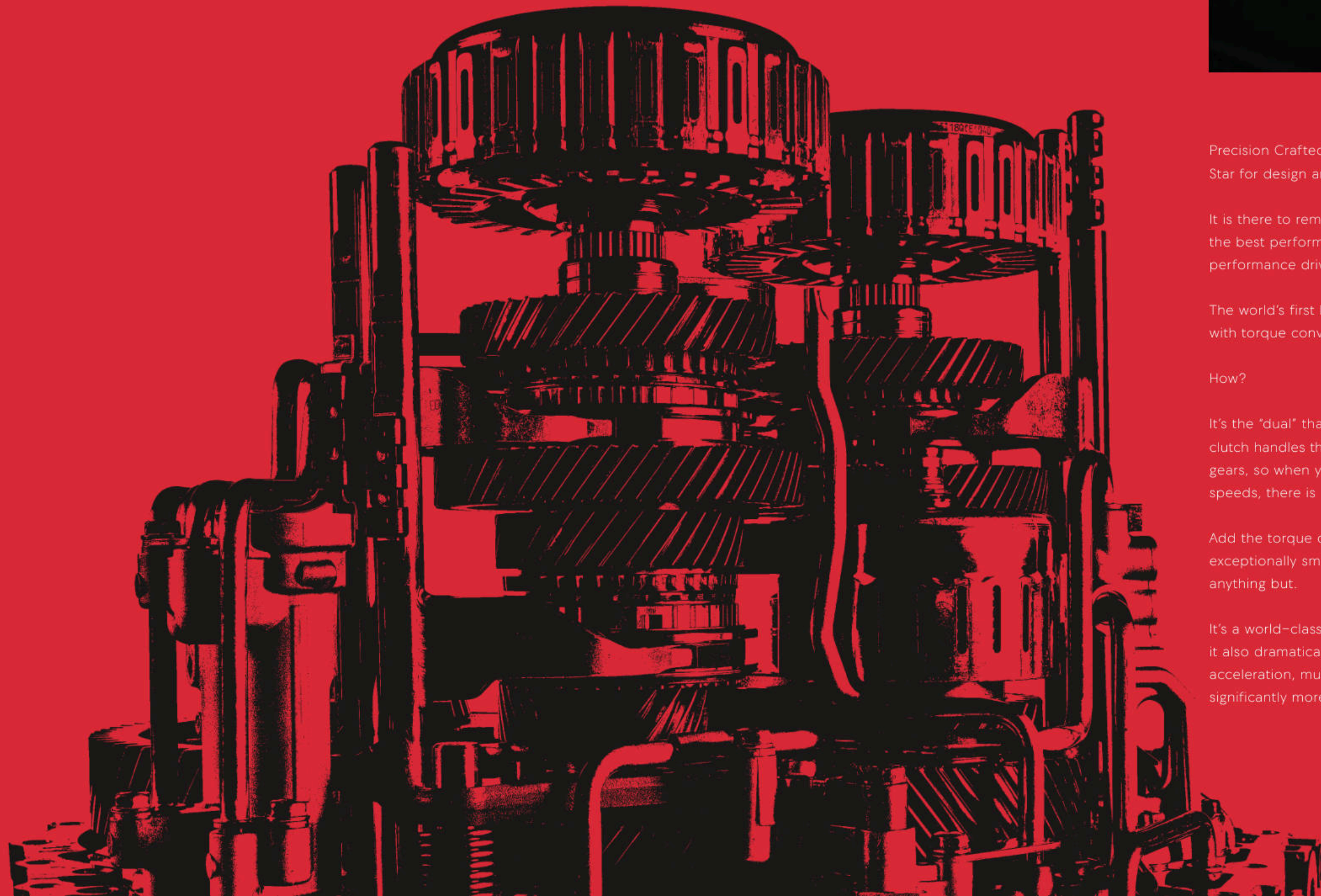


8-SPEED

# DUAL-CLUTCH

# TRANSMISSION

TRANSMISSION



Precision Crafted Performance is our North Star for design and engineering.

It is there to remind us not only to create the best performance cars, but also the best performance drivers.

The world's first Dual-Clutch Transmission with torque converter does just that.

How?

It's the "dual" that makes the difference; one clutch handles the odd gears, another the even gears, so when you shift through the eight speeds, there is no lag time between shifts.

Add the torque converter, and the result is exceptionally smooth shifts when traffic is anything but.

It's a world-class innovation so powerful that it also dramatically improves off-the-line acceleration, multiplying engine torque for significantly more powerful initial acceleration.



## EFFORTLESSLY CONNECT TO EVERYTHING AND EVERYONE

It's not enough to simply be connected anymore; we need tools that work harder for us. Available AcuraLink seamlessly connects you to the information you want while providing peace of mind and added convenience.<sup>1</sup> Download the available AcuraLink app to reap the benefits of the complimentary trial packages. The Remote Package allows you to locate your vehicle after the big game by flashing your lights and sounding your horn via your smartphone. And for the most demanding drivers, the Concierge Package puts personal assistants at your fingertips, night and day, to ensure that all your journeys go off stress-free.<sup>2</sup>

### APPLE CARPLAY

CarPlay<sup>®</sup> seamlessly integrates your iPhone<sup>®</sup> with the car's built-in display and controls, so you can make calls, access your music, send and receive messages, get directions, or use Siri<sup>®</sup> with the press of a button.<sup>3</sup>

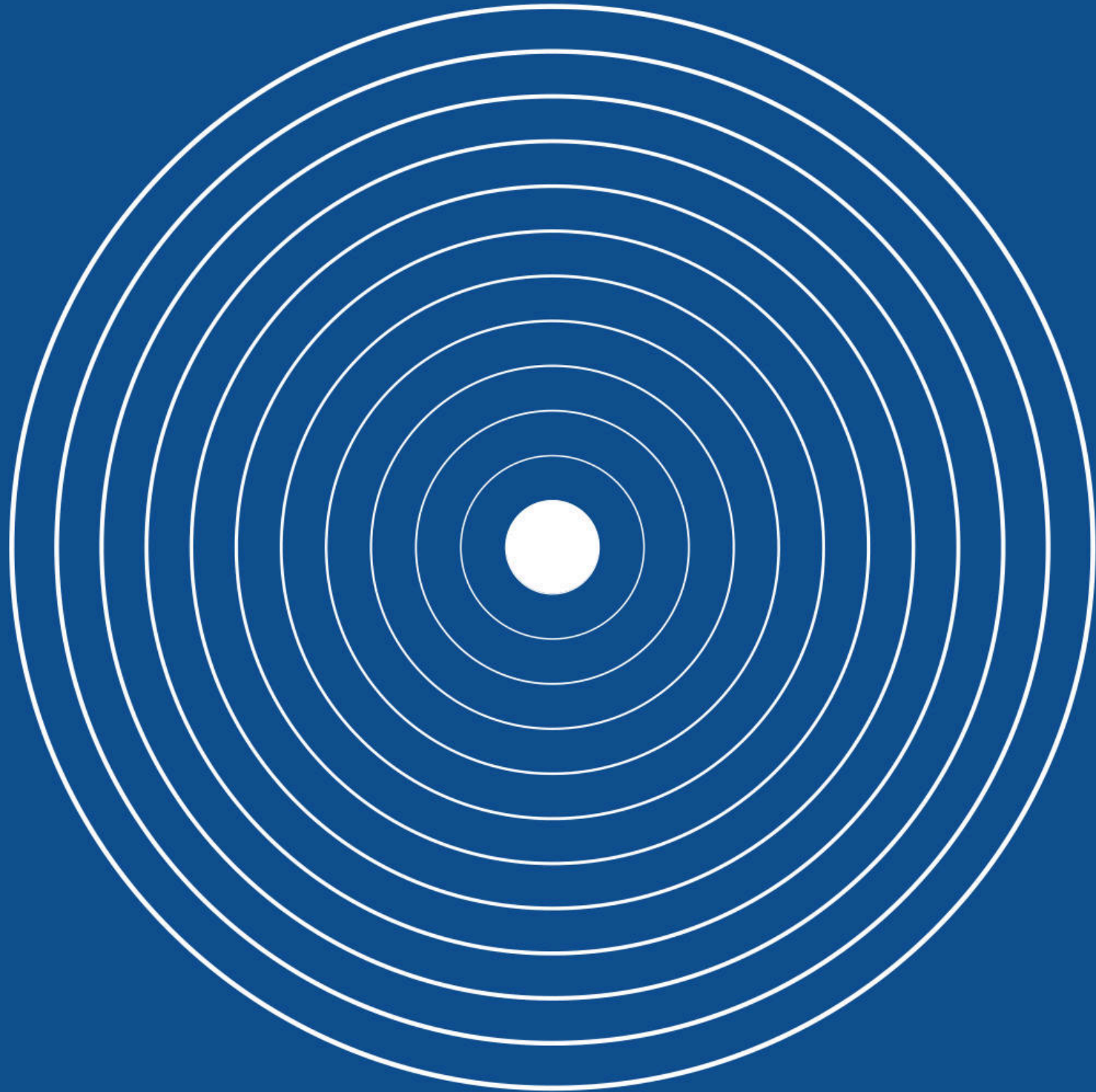
### ANDROID AUTO

Available Android Auto<sup>™</sup> brings the Android<sup>®</sup> experience into your ILX. With it, you project your favorite apps onto the ILX's touchscreen display, and its intuitive interface populates suggested directions, upcoming appointments, weather conditions, and more. The Talk to Google voice feature allows you to access directions via Google Maps<sup>™</sup>, send and receive text messages, and access your favorite music.<sup>4</sup>

### ODMD 2.0

The available On Demand Multi-Use Display<sup>™</sup> (ODMD<sup>™</sup>) 2.0 offers a more intuitive use of CarPlay and Android Auto than the more common single-screen configurations. With two screens, you can display and manage CarPlay or Android Auto on the 8-inch upper screen, while displaying and managing your climate and audio on the lower 7-inch touchscreen. No more need to exit your smartphone's OS to manage the car's OS. Instead, the ILX offers effortless enjoyment of your media as well as your car's information.

# ELS



## AUDIO AS RESPONSIVE AS THE CAR

The available critically acclaimed ELS Studio® Premium Audio System was crafted by eight-time Grammy® award winner Elliot Scheiner. The system produces music as it's meant to be heard—in studio quality. Whether you connect one of your digital devices or stream over the digital airwaves, even your favorite songs will feel refreshed and new. It's a perfect mix of engineering and artistry that delivers precision to the soul much the same way the ILX delivers precision to every performance opportunity.



THE MOST IMPORTANT PERSON ON THE ROAD  
IS EVERY PERSON ON THE ROAD

AcuraWatch™ forms a network of seamlessly connected sensing technologies within the ILX. These advanced safety and driver-assistance features constantly gather information and offer warnings, and some features can even take action when necessary, all to help prevent, avoid, or minimize threats.

a. Forward Collision Warning (FCW) System<sup>6</sup>  
Collision Mitigation Braking System™ (CMBS™)<sup>7</sup>

b. Lane Departure Warning (LDW) System<sup>8</sup>  
Lane Keeping Assist System (LKAS)<sup>8</sup>  
Road Departure Mitigation (RDM) System

c. Adaptive Cruise Control (ACC) with Low-Speed Follow<sup>9</sup>

d. Available Blind spot information (BSI) System<sup>10</sup>

e. Available Rear Cross Traffic Monitor<sup>11</sup>

f. Multi-View Rear Camera with Dynamic Guidelines<sup>12</sup>  
Available Surround-View Camera System<sup>13</sup>



AT OUR  
BEST  
WHEN IT  
MATTERS  
MOST



#### ADVANCED COMPATIBILITY ENGINEERING

Acura's Advanced Compatibility Engineering™ (ACE™) body structure is designed to absorb and disperse frontal impact energy so less force is transferred to what really matters: the people inside. But we didn't stop there. Crash compatibility is designed into the structure as well, so in the event of a frontal collision, the occupants of all vehicles involved are better protected. ACE incorporates extra bracing at the front corners to absorb and distribute impact energy from narrow-offset collisions to the primary crash structure. The outer braces are designed to transfer impact load toward the center of the frame, where the energy can be distributed around the cabin area more evenly. This enhanced frontal-crash-energy management helps reduce the forces transferred to the reinforced cabin and can help to more evenly disperse the forces transferred to other vehicles in a collision.



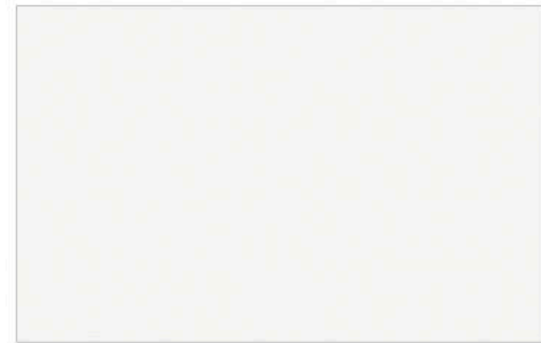
**ACURA** | GENUINE ACCESSORIES

When it comes to personalizing, choose Acura Genuine Accessories, which are crafted with the same precision and attention to detail as the rest of your Acura. See your Acura dealer for a complete list of accessories or visit [acura.com](http://acura.com).

Popular Accessories:

- a. Underbody Spoiler Kit
- b. A-Spec Illuminated Door Sill
- c. Decklid Spoiler
- d. Dark Chrome Trunk Trim
- e. 17-inch Diamond-Cut Alloy Wheels, Stealth Glint Black
- f. A-Spec Carpet Mat

EXTERIOR COLOR



Platinum White Pearl



Lunar Silver Metallic  
Not available with A-Spec Package.

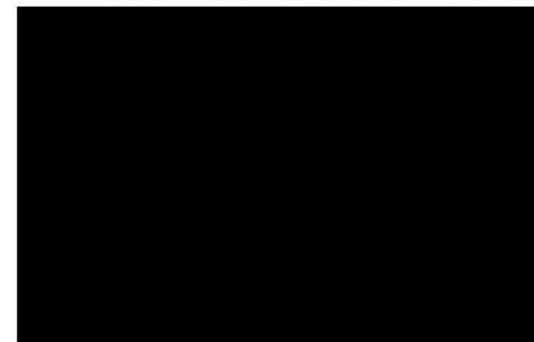


Modern Steel Metallic

PREMIUM EXTERIOR COLOR



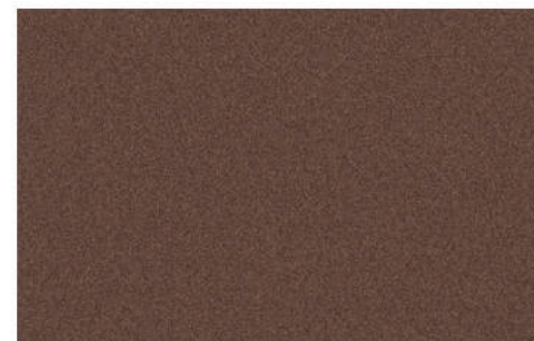
Performance Red Pearl



Majestic Black Pearl



Apex Blue Pearl  
Available with A-Spec Package only.



Canyon Bronze Metallic  
Available with Premium or Technology Package only.

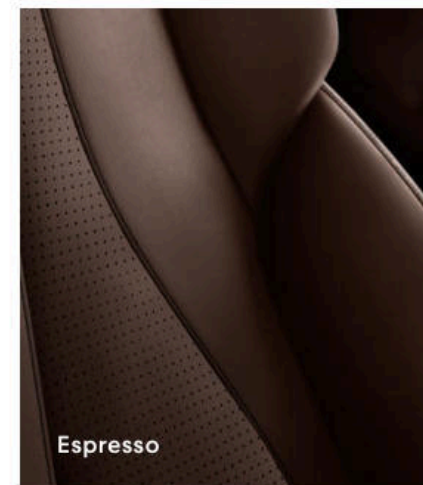
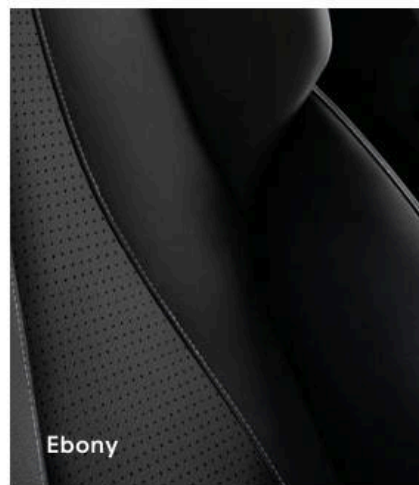


INTERIOR COLOR & TRIM

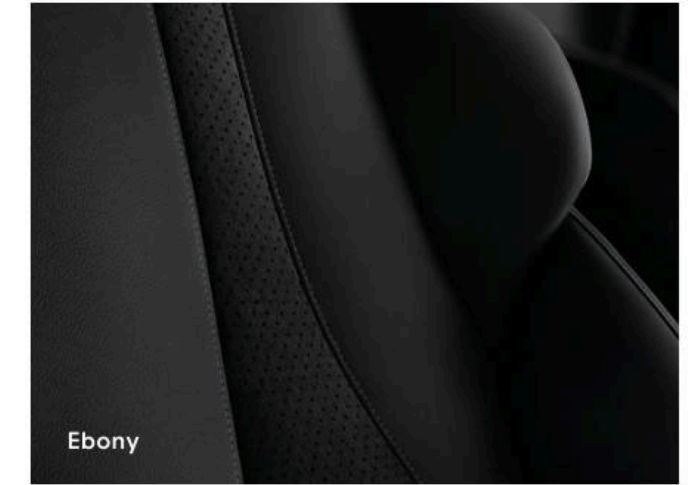
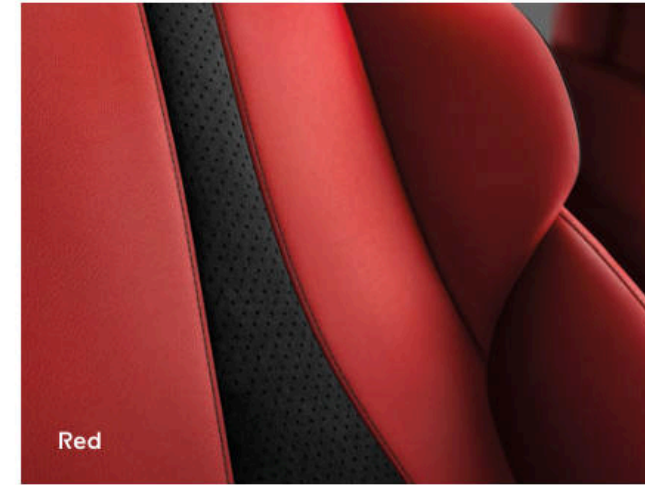
Leatherette



Milano Premium Leather



A-Spec Milano Premium Leather & Ultrasuede



Exterior Colors	Interior Colors		
	Leatherette	Milano Premium Leather	Milano Premium Leather and Ultrasuede*
Platinum White Pearl	Ebony	Ebony, Espresso	Ebony, Red
Lunar Silver Metallic	Ebony	Ebony, Graystone	-
Modern Steel Metallic	Ebony	Ebony, Espresso	Ebony, Red
Majestic Black Pearl	Ebony	Ebony, Espresso	Ebony, Red
Apex Blue Pearl*	-	-	Ebony, Red
Performance Red Pearl	Ebony	Ebony, Graystone	Ebony, Red
Canyon Bronze Metallic	-	Espresso	-

\*Requires A-Spec Package.

ENGINE	ILX
Engine Type	Aluminum-Alloy 4-Cylinder
Displacement (liters)	2.4
Horsepower @ rpm	201 @ 6,800
Torque (lb-ft @ rpm)	180 @ 3,600
Valvetrain	16-Valve, DOHC i-VTEC®
Fuel Injection	Direct
Throttle Control	Drive-by-Wire Throttle System
Tune-Up Interval	100K +/- Miles No Scheduled Tune-Ups

DRIVETRAIN	
Front-Wheel Drive	•
8-Speed DCT (Dual-Clutch Transmission) with Torque Converter	•
Sequential SportShift Paddle Shifters	•

CHASSIS	
MacPherson Strut Front Suspension	•
Multi-Link Rear Suspension	•
Amplitude Reactive Dampers	•
Electric Power-Assisted Rack-and-Pinion Steering (EPS)	•
Ventilated Front Disc/Solid Rear Disc Brakes (in)	12.3/11.1
Aluminum-Alloy Wheels	17 x 7.0 Glitter Silver Machine-Finished Y-Spoke Noise-Reducing
Aluminum-Alloy Wheels (Premium, Technology)	17 x 7.0 Pewter Silver Metallic Machine-Finished Y-Spoke Noise-Reducing
Aluminum-Alloy Wheels (A-Spec®)	18 x 7.5 Shark Gray 15-Spoke Noise-Reducing
Tires	P215/45 R17 High-Performance All-Season
Tires (A-Spec®)	225/40 R18 High-Performance All-Season
Steering Ratio	15.3
Turning Diameter, Curb to Curb (ft)	36.8

DIMENSIONS	
<b>EXTERIOR</b>	
Length (in)	182.2
Width (in)	70.6
Height (in)	55.6
Wheelbase (in)	105.1
Track (in, front/rear)	59.4/60.2
Ground Clearance (in, unladen)	5.3

<b>INTERIOR</b>	
Headroom (in, front/rear)	38.0/35.9
Legroom (in, front/rear)	42.3/34.0
Shoulder Room (in, front/rear)	55.6/53.6
Hiproom (in, front/rear)	50.3/51.7
EPA Passenger Volume (cu ft)	89.3
EPA Cargo Volume (cu ft)	12.4

FUEL ECONOMY - WEIGHT	
EPA Fuel Economy Ratings <sup>12</sup> (city/highway/combined)	24/24/28
Recommended Fuel <sup>13</sup>	Premium Unleaded 91-Octane
Fuel Tank Capacity (U.S. gal)	13.2
Curb Weight (lbs)	3,095
Curb Weight with Premium Package (lbs without/with A-Spec®)	3,122/3,144
Curb Weight with Technology Package (lbs without/with A-Spec®)	3,124/3,148
Weight Distribution (% front/rear)	63/37

AcuraWatch™ ADVANCED SAFETY & DRIVER-ASSISTANCE TECHNOLOGY	
Forward Collision Warning (FCW) System	•
Collision Mitigation Braking System™ (CMBS™)	•
Lane Departure Warning (LDW) System	•
Lane Keeping Assist System (LKAS)	•
Road Departure Mitigation System	•
Blind spot information (BSI) System	P,T
Adaptive Cruise Control (ACC)	•
Multi-View Rear Camera	•
Multi-View Rear Camera with Dynamic Guidelines	T
Rear Cross Traffic Monitor	P,T

EXTERIOR	
Moonroof with Tilt and Slide Function	•
Jewel Eye® LED Headlights	•
LED Fog Lights	AS
LED-Illuminated Taillights, Brake Lights, and Center High Mount Stop Light	•
Acoustic Glass Windshield	•
Remote-Operated Windows and Moonroof-Open Function	•
Decklid Spoiler	AS
Side Underbody Spoilers	AS

P = Premium Package, T = Technology Package, AS = A-Spec  
A-Spec Package available with and adds to or replaces features in Premium or Technology Packages.

INTERIOR	ILX
Dual-Zone, Automatic Climate Control with Humidity Control and Air Filtration	•
GPS-Linked Climate Control	•
Keyless Access System with Acura Personalized Settings	•
Pushbutton Ignition	•
Power Windows with Driver's and Front Passenger's Auto-Up/Down and Auto-Reverse	•
Sport Seats with Leatherette-Trimmed Interior with Contrast Stitching	•
Sport Seats with Perforated Milano Premium Leather-Trimmed Interior with Contrast Stitching and Piping	P,T
Sport A-Spec® Seats with Perforated Milano Premium Leather and Ultrasuede®-Trimmed Interior with Contrast Stitching and Piping	AS
Driver's 8-Way Power Seat with Power Lumbar Support	•
Front Passenger's 4-Way Power Seat with Power Lumbar Support	P,T
Heated Front Seats	•
Fold-Down Rear Seatback	•
Tilt and Telescopic Steering Column	•
Leather-Wrapped Steering Wheel and Shift Knob	•
Steering Wheel-Mounted Controls	•
Stainless Steel Sport Pedals	AS
Bright Silver and Chrome Dash Trim	•
Graphite and Chrome Dash Trim	AS
Ebony Headliner	AS
Active Sound Control	•
Ambient Cabin Lighting	•
Automatic-Dimming Rearview Mirror	P,T
Retained Accessory Power for Windows and Moonroof	•
12-Volt Power Outlet (front armrest)	•

DRIVER CONVENIENCE	
Hill Start Assist	•
Cruise Control	•
Auto-On/Off Headlight Operation with Wiper Integration	•
Heated Side Mirrors	•
HomeLink®	P,T
Compass	•

AUDIO & CONNECTIVITY	
Acura Navigation System with 3D View	T
AcuraLink Real-Time Traffic™ with Street and Freeway Conditions	T
Traffic Rerouting™	T
AcuraLink® Connected Services	T
Apple CarPlay® Integration	P,T,AS
Android Auto™ Integration	P,T,AS
Siri® Eyes Free <sup>14</sup>	•
SMS, MMS Text Message Capability <sup>1</sup>	•
SMS, MMS Text Message and Email Capability <sup>1</sup>	P,T
On Demand Multi-Use Display™ (ODMD™) 2.0	P,T
Color Multi-Information Display (MID)	•
Bluetooth® HandsFreeLink® Wireless Telephone Interface <sup>15</sup>	•
Acura Audio System with 6 Speakers	T
Acura Premium Audio System with 7 Speakers, including Subwoofer	P
Acura/ELS Studio® Premium Audio System with 10 Speakers	•
Song By Voice®	T
HD Radio®	P,T
SiriusXM® Satellite Radio <sup>16</sup>	P,T
Pandora® Compatibility <sup>17</sup>	•
USB Audio Interface <sup>18</sup>	•
Bluetooth® Streaming Audio <sup>15</sup>	•
MP3/Auxiliary Input Jack	•*
Speed-Sensitive Volume Compensation (SVC)	•
Maintenance Minder™ System	•

SAFETY & SECURITY	
Advanced Compatibility Engineering™ (ACE™) Body Structure	•
Advanced Front Airbags (SRS)	•
Front Side Airbags	•
Side Curtain Airbags	•
Vehicle Stability Assist™ (VSA®) with Traction Control and Motion Adaptive Steering	•
4-Wheel Anti-Lock Braking System (ABS)	•
Electronic Brake Distribution (EBD)	•
Brake Assist	•
LED Daytime Running Lights (DRL)	•
Tire Pressure Monitoring System (TPMS) with Location and Pressure Indicators	•
Expanded-View Driver's Mirror	•
Theft-Deterrent System with Electronic Immobilizer	•
Tire Sealant and Repair Kit	•

P = Premium Package, T = Technology Package, AS = A-Spec  
A-Spec Package available with and adds to or replaces features in Premium or Technology Packages.



ILX with Technology and A-Spec Packages shown in Apex Blue Pearl.

## OWNER BENEFITS

When you purchase a vehicle with the exceptional quality of an Acura, you expect service and support to be of the same caliber. After all, a premium automobile is only part of the ownership experience. With Acura, you also get a commitment: to personalized care, to attentive service. This commitment is apparent the moment you first enter an Acura dealership and for years down the road. It comes from a belief that every aspect of owning an Acura should be an enjoyable and rewarding experience.

### Acura Limited Warranties

All Acura vehicles and any Acura Genuine Accessories installed by the dealer at the time of vehicle purchase have a four-year/50,000-mile limited warranty. Acura vehicles are also covered by a six-year/70,000-mile limited powertrain warranty. In addition, outer-body rust-through is covered by a five-year/unlimited-mile limited warranty.<sup>19</sup>

### Acura Financial Services®

From leasing and financing to protecting your vehicle after your warranty expires to helping you determine which Acura fits your budget, Acura Financial Services (AFS) provides you with the convenience, options, and service to complement your life. For more information, go to [www.acurafinancialservices.com](http://www.acurafinancialservices.com).<sup>20</sup>

### Acura Care®

Additional peace of mind can be had with the Acura Care program—comprehensive vehicle and travel protection beyond the initial warranty period. See your Acura dealer for all the features and benefits available with this program.

### Total Luxury Care® (TLC®)

Acura's commitment to your satisfaction doesn't end with the delivery of a world-class vehicle. As an Acura owner, you'll enjoy an array of services, like the Acura Concierge,<sup>TM</sup> for 24-hour weather information, insurance claims assistance, or to help you plan a trip; trip-interruption benefits, like alternative transportation, lodging, and meals; and a 24-Hour Roadside Assistance program.<sup>21</sup>

### AcuraLink



### AcuraLink Owners Mobile App

It's not enough to simply be connected anymore; you need tools that work harder for you and your family. AcuraLink provides you with a more enjoyable driving experience while offering peace of mind and added convenience. Download the AcuraLink app to reap the benefits of the complimentary trial packages. Enjoy the luxury of a personal concierge or locate your vehicle after the big game by remotely flashing your lights and sounding your horn via your smartphone. Check your vehicle status remotely, receive assistance from a live agent in the event of a collision, and more. AcuraLink package information can be located at [acuralink.com](http://acuralink.com).

### 1-800-to-Acura

Operators are available 24 hours a day to help answer your Acura questions.

### Acura.com

Learn more about Acura vehicles, including the latest specifications, see photo galleries and technology videos, and find out how our vehicles compare with the competition. You can also build and price your Acura, see current offers, and even get a quote from an internet-certified Acura dealer.

### Owners.Acura.com

The online help doesn't end when you take possession of your vehicle. Your complimentary Acura Owners personalized website gives the most current information about your vehicle, provides tips on how to care for your Acura, lets you keep a personalized maintenance record, sends you service reminders, and lets you schedule service appointments online.

©2018 Acura. Acura, ILX, Acura Care, Acura Concierge, Acura Financial Services, AcuraLink, AcuraLink Real-Time Traffic, AcuraWatch, Advanced Compatibility Engineering [ACE], A-Spec, Collision Mitigation Braking System [CMBS], HandsFreeLink, i-VEEC, Jewel Eye, Maintenance Minder, On Demand Multi-Use Display [ODMD], Song By Voice, Total Luxury Care, Traffic Retuning, Vehicle Stability Assist [VSA], and the stylized "A" logo are trademarks of Honda Motor Co., Ltd. Covered by patent rights issued and/or pending. Specifications, features, illustrations, and equipment shown in this catalog are based on the latest available information at the time of publication. Although descriptions are believed to be correct, accuracy cannot be guaranteed. All images contained herein are either owned by American Honda Motor Co., Inc., or used under a valid license. It is a violation of federal law to reproduce these images without express written permission from American Honda Motor Co., Inc., or the individual copyright owner of such images. American Honda Motor Co., Inc., reserves the right to make changes at any time, without notice or obligation, in colors, specifications, accessories, materials, and models. Android, Android Auto, and Google Maps<sup>TM</sup> are trademarks of Google, Inc. The Bluetooth<sup>®</sup> word mark and logos are owned by the Bluetooth SIG, Inc., and any use of such marks by Honda Motor Co., Ltd., is under license. CarPlay<sup>®</sup>, iPad mini<sup>™</sup>, iPad<sup>®</sup> with Retina<sup>®</sup> display, iPhone, iPod touch<sup>®</sup>, and Siri<sup>®</sup> are registered trademarks of Apple Inc. ELS Studio is a registered trademark of Panasonic Corporation of North America. All rights reserved. GRAMMY is a registered trademark of The Recording Academy and is used under license. HD Radio is a proprietary trademark of iBiquity Digital Corporation. HomeLink<sup>®</sup> is a registered trademark of Gentex Corporation. Pandora, the Pandora logo, and the Pandora trade dress are trademarks or registered trademarks of Pandora Media, Inc. Used with permission. ©2018 Sirius XM Radio, Inc. SiriusXM is a trademark of XM Satellite Radio, Inc. Make an intelligent decision. Fasten your seat belt. 1 Based on compatibility. Cellular connection required. Your wireless carrier's rate plans apply. See your dealer for details. 2 Certain AcuraLink services are available only where compatible cellular and GPS coverage is available. Subscription agreement required to enroll and terms and conditions of subscription agreement apply to services. Standard text rates and/or data usage may apply to communications received by email or SMS/text message. Visit your dealer or [acura.com/acuralink](http://acura.com/acuralink) for more information on standard and available features. 3 For use with Apple iPhone<sup>®</sup> devices only. Requires iPhone 5 or later, and it is recommended that you always update your iPhone to the latest iOS release. It is recommended that you use the Apple Lightning cable provided with your phone or an Apple certified Lightning cable. Cellular service rates apply. Distracted driving can result in a loss of vehicle control. Never use a handheld device or system that takes your focus away from safe vehicle operation. 4 Requires Android phones with Android 5.0 Lollipop or higher. Using the USB cable that was provided with your phone is recommended. When Android Auto<sup>™</sup> is active, your in-vehicle voice recognition system will be disabled, and all requests will be made using Google voice actions. Android Auto<sup>™</sup> features may operate differently than on your phone. Apps use your smartphone data service. Normal cellular service rates will apply. Message and data charges may apply when using Android Auto. Compatibility with third-party apps is not guaranteed. Distracted driving can result in a loss of vehicle control. Never use a handheld device or system that takes your focus away from safe vehicle operation. 5 Depending on the circumstances, CMBS may not go through all the alert stages before initiating the last stage [of collision mitigation]. CMBS cannot detect all objects ahead and may not detect a given object; accuracy will vary based on weather, speed, and other factors. System operation affected by high interior

heat. Driver remains responsible for safely operating vehicle and avoiding collisions. 6 FCW cannot detect all objects ahead and may not detect a given object; accuracy will vary based on weather, speed, and other factors. System operation affected by extreme interior heat. FCW does not include a braking function. Driver remains responsible for safely operating vehicle and avoiding collisions. 7 LKAS [Lane Keeping Assist System] and LDW [Lane Departure Warning] only alert drivers or operate when lane drift is detected without a turn signal in use. LDW and LKAS may not detect all lane markings or lane departures; accuracy will vary based on weather, speed, and road conditions. System operation affected by extreme interior heat. Driver remains responsible for safely operating vehicle and avoiding collisions. 8 Adaptive Cruise Control [ACC] cannot detect all objects ahead and may not detect a given object; accuracy will vary based on weather, speed, and other factors. ACC should not be used in heavy traffic, poor weather, or on winding roads. The driver remains responsible for avoiding a collision. 9 The system is not a substitute for your own visual assessment before changing lanes; system accuracy will vary based on weather, size of object, and speed. 10 The system is not a substitute for your own visual assessment before backing up; system accuracy will vary based on weather, size of object, and speed. 11 Always visually confirm that it is safe to drive before backing up; the rearview camera display does not provide complete information about all conditions and objects at the rear of your vehicle. 12 Based on 2019 EPA mileage ratings. Use for comparison purposes only. Your actual mileage will vary depending on how you drive and maintain your vehicle, driving conditions, battery pack condition and age, and other factors. 13 Use of lower-octane gasoline can cause an occasional metallic knocking noise in the engine and will result in decreased engine performance. Use of gasoline with a pump octane less than 91 can lead to engine damage. 14 Siri<sup>®</sup> is available on iPhone<sup>®</sup> 4s or later, iPad mini<sup>™</sup>, iPad<sup>®</sup> with Retina<sup>®</sup> display, and iPod touch<sup>®</sup> [5th generation] and requires internet access. Siri<sup>®</sup> may not be available in all languages or in all areas, and features may vary by area. Cellular data charges may apply. Some features may not be available for all countries or all areas. 15 Visit [www.handsfreelink.com](http://www.handsfreelink.com) for a list of compatible phones and available features. Compatible with select phones with Bluetooth<sup>®</sup> technology. Your wireless carrier's rate plans apply. 16 SiriusXM services require a subscription after any trial period. If you decide to continue your SiriusXM service at the end of your trial subscription, the plan you choose will automatically renew and bill at then-current rates until you call SiriusXM at 1-866-635-2349 to cancel. See our Customer Agreement for complete terms at [www.siriusxm.com](http://www.siriusxm.com). Fees and programming subject to change. XM satellite service is available only to those at least 18 years of age in the 48 contiguous United States and D.C. 17 Compatible with select smartphones. See [www.pandora.com/anywhere/mobile](http://www.pandora.com/anywhere/mobile). Not all devices are compatible with USB connection. Your wireless carrier's rate plans apply. 18 The USB Audio Interface is used for direct connection to and control of some current digital audio players and other USB devices that contain MP3, WMA, or AAC music files. Some USB devices with security software and digital rights-protected files may not work. Please see your Acura dealer for details on compatibility. Windows Media<sup>®</sup> is a trademark or registered trademark of Microsoft Corporation in the United States and/or other countries. 19 Ordinary maintenance items or adjustments, parts subject to normal wear and replacement, and certain other items are excluded. See your Acura dealer for the items and conditions of limited warranties. 20 Acura Financial Services is a DBA of American Honda Finance Corporation. 21 See your local dealer for details about Total Luxury Care [TLC] Roadside Assistance and Acura Concierge service.



ILX with Technology Package shown in Platinum White Pearl.

