



La meccanica delle emozioni

ALFAROMEUSA.COM



4C

4C

With the 4C, Alfa Romeo has perfected the art of seduction. Sending out irresistible style and performance cues, the 4C Coupe and 4C Spider models embody their Italian maker's passion-fueled heritage of racing and craftsmanship. Here, the connections among driver, road and car couldn't be stronger.





Desire's most prolific producers

4C COUPE With a captivating mix of progressive technology, race-inspired performance and seductive styling, the Alfa Romeo 4C Coupe thrills Alfa Romeo devotees, performance enthusiasts and car connoisseurs alike. The world's foremost racing chassis designers collaborated on its highly praised framework. Its carbon fiber monocoque chassis and other advanced lightweight technologies help put 4C performance into supercar territory — and reflect more than a century of Alfa Romeo innovation and racetrack wins. This is supreme performance that can be experienced first-hand instead of admired from afar.

4C SPIDER The Alfa Romeo 4C Spider delivers the thrill of the 4C Coupe's sharp corners and quick turn-ins with open-air exhilaration. Beyond delivering outdoor splendor to its fullest, the open-air design of the 4C Spider turns glances into gazes with gleaming carbon fiber accents inside and out. Carbon fiber also contributes to its overall performance: its rigid but ultralight carbon fiber monocoque chassis, windshield surround and halo are key to its minimal weight.

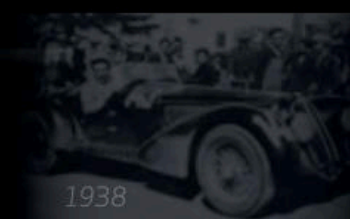
From a long line of sensational

For more than one hundred years, Alfa Romeo has earned its high-performance reputation through daring innovation. With a proven record of European and World Championships, those risks proved valuable on both track and street.



The Alfa Romeo 4C unabashedly draws its inspiration from the iconic 1967 Alfa Romeo 33 Stradale, a long-time fixture on "world's best" car lists. Alfa Romeo produced just 18 examples of the 33 Stradale, the street-legal version of the racing aeronautical technology. As seen at first glance, the 33 Stradale and the 4C share the same lines, in which every single element has an essential function, and nothing is superfluous. Both convey the pure automotive passion held by every designer, engineer, driver and enthusiast that has influenced Alfa Romeo — past and present.

"I feel for Alfa the same tenderness one feels when remembering his first love." — E. J. Finn



1967

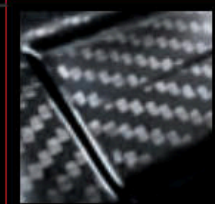
2018

Elements of great performance



Aluminum front subframe

carbon
6
C
12.011

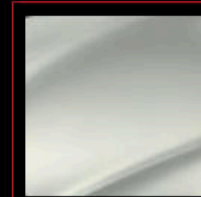


Carbon fiber passenger cell

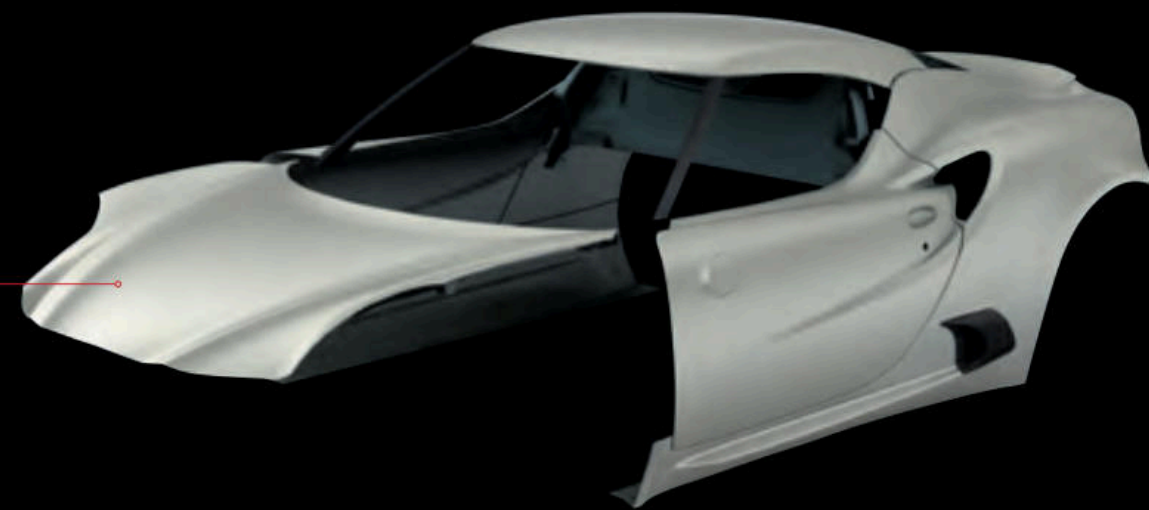
aluminum
13
Al
26.982



Aluminum engine frame



Composite body shell



Designed in collaboration with the world's foremost racing chassis designers, the Alfa Romeo 4C Coupe and 4C Spider are innovative at their very core. Supercar DNA runs throughout, including a carbon fiber monocoque chassis, mid-engine design and aluminum subframes.

It begins with the solid foundation of a carbon fiber monocoque chassis. Laid by hand, this carbon fiber is three times stronger and seven times lighter than conventional steel. Front and rear aluminum subframes combine strength with weight-saving technologies. Sheet Molding Compound (SMC) is used for the outer body and is 20% lighter and more stable than steel — and also resists corrosion. The end result of these advanced technologies is incredible strength and remarkable weight-efficiency — the overall curb weight is under 2,500 lb. for both 4C Coupe and 4C Spider.

Power, well-sourced



This mid-engine-mounted 1750 turbocharged 4-cylinder engine churns out some impressive numbers: 237 hp, 258 lb.-ft. of torque, 136 hp per liter and a top speed of 160 mph — all with up to 34 mpg hwy. Its all-aluminum design includes four valves per cylinder, a new-generation turbocharger, ultra-high-pressure direct fuel injection and a dual-core intercooler. The thrilling validation of this advanced engineering: 0 – 60 mph in just 4.1 seconds.



The extraordinary performance of Alfa Romeo 4C is centered on one key concept: balance. Its mid-engine layout, rear-wheel drive and monocoque chassis give each 4C model ideal weight distribution, with amazing handling and control. The engine placement concentrates mass near the center as it throws weight toward the rear during acceleration, allowing for better grip. This, coupled with its weight-saving technologies, allows 4C to outperform many cars boasting higher horsepower — it will corner sharper, brake harder, turn in quicker and respond more readily.



Weight, well-placed



A competitive edge enhanced

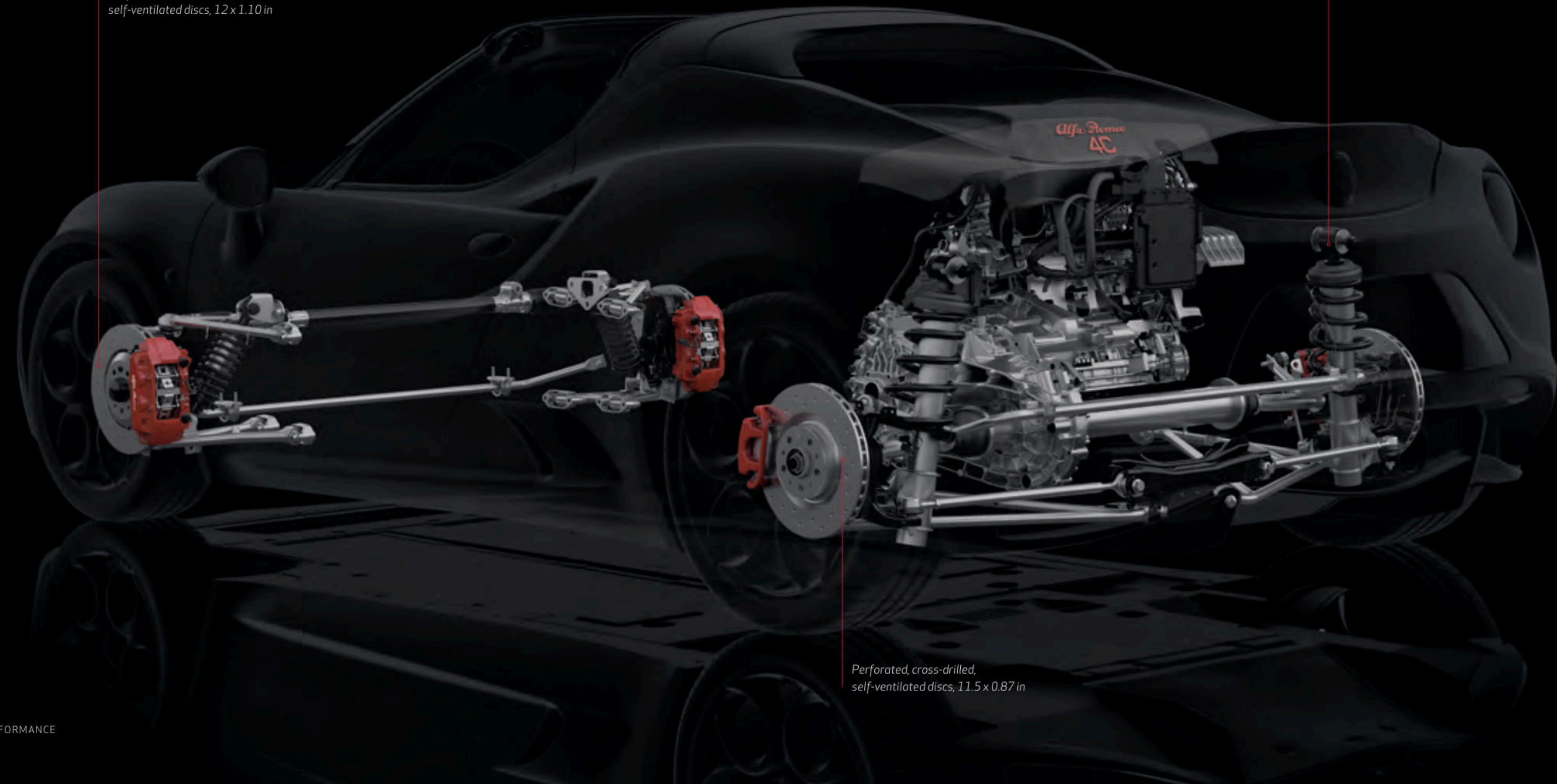
OPTIMIZED AIRFLOW The advanced engine technology of the Alfa Romeo 4C maximizes torque at low engine speeds and delivers more power in response to driver input. The control unit determines the valve timing to encourage fresh airflow from the intake through to the exhaust during the overlap period. By improving the circulation in the combustion chamber, this direct flow increases combustion efficiency and turbine speed while reducing turbo lag.

TURBOCHARGER The engine is also equipped with a new-generation turbocharger, and a pulse converter exhaust manifold that uses pressure waves to boost torque at low engine speeds. The manifold and turbine are made from microcast steel and designed to operate at very high temperatures (over 1,000°F) — a prerequisite to low fuel consumption on medium-/high-speed highway trips. The wastegate valve is another essential device for engine efficiency. This adjusts turbo pressure control logic to suit driving conditions, minimizing pumping losses.

AFTER-RUN PUMP The 4C uses an automatic cool-down system to protect its turbocharger. Switching off the engine would normally cause the immediate stoppage of oil circulation, leaving the oil in the turbocharger to stagnate at very high temperatures. The thermal stress suffered by the oil under these conditions causes a loss of lubricating capacity and also leads to the formation of residues that can damage the engine. To prevent this, Alfa Romeo has introduced an after-run pump. This electric pump is automatically controlled by the Electronic Control Unit (ECU) and keeps oil circulating through the turbocharger until it has cooled sufficiently.

ALFA TWIN CLUTCH TRANSMISSION (TCT) The 4C is equipped with an ALFA TCT 6-speed automatic transmission with a twin clutch and paddle shifters, a solution that combines the instant power of a sequential shift with all the convenience of an automatic. This system works like two gearboxes in parallel, each with its own clutch, minimizing discontinuity in power transmission. The ALFA TCT clutch has been specially modified for use on the Alfa Romeo 4C, and features control software that ensures the fastest possible gearshifts under all conditions — as quick as 130 milliseconds. Gearshifts are more aggressive in the Dynamic and Race modes, yet are completed in the smoothest way possible on bends to avoid reducing stability.

Perforated, cross-drilled,
self-ventilated discs, 12 x 1.10 in



MacPherson
rear suspension

Perforated, cross-drilled,
self-ventilated discs, 11.5 x 0.87 in

Be one with the road

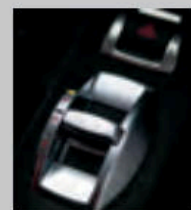
A combination of sport suspensions, large self-ventilated cross-drilled brake discs and staggered wheels: the 4C boasts an advanced ride control system, giving every driver extra street smarts.

The suspension adopts race-derived technical solutions to optimize performance and deliver unrivaled driving pleasure. At the front, the Alfa Romeo 4C features a double-wishbone configuration that gives direct and unfiltered feedback from the road. At the rear, the advanced MacPherson suspension ensures superb road-holding and driving fun, even during the most extreme maneuvers. Both front- and rear-suspension systems are made from aluminum and high-strength steel. The braking system is designed for high-performance racetrack use. The perforated, self-ventilated front discs and Brembo® brake calipers offer supreme stopping power. And to ensure maximum grip and prevent skidding under all conditions, the 4C is fitted with staggered wheels, 17-inch – 18-inch or 18-inch – 19-inch, with larger tires on the rear for the best possible handling.

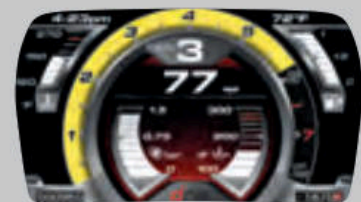



Holding command in high regard

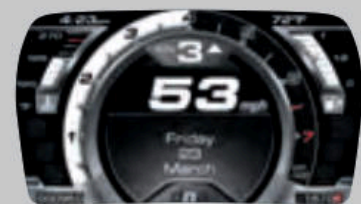
Overall performance is superbly enhanced with numerous features designed to hone and improve each trip. The four-mode Alfa DNA Drive Pro Mode Selector gives drivers the ability to create a customized vehicle experience according to driving conditions or desired vehicle responsiveness. Choose from its All-Weather, Natural, Dynamic or Race settings, which make changes in throttle response, shifting speeds and traction control for a driving experience tailored to any situation.




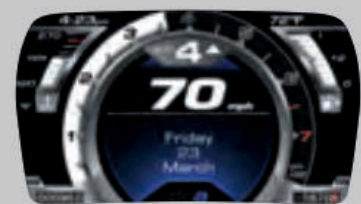
RACE This is the most extreme performance mode for 4C. By minimizing the interventions of electronic systems, it leaves the driver in complete command. Electronic Stability Control (ESC)^{1*} only intervenes during aggressive driving. Anti-Slip Regulation (ASR) is deactivated under acceleration and braking, while the Alfa Romeo electronic differential control system remains active for fast exits from bends.




 **DYNAMIC** True to its name, this mode helps deliver great driving performance with near-instant accelerator response and reduced gearshift times of up to 25%. The ESC¹ system only intervenes when drift angles put the car at risk.



 **NATURAL** Designed for everyday use, its gearshift parameters are configured for maximum comfort and smoothness. In this mode, Auto-Up and Auto-Down functions shift at just the right engine speed. The Alfa Romeo electronic differential only cuts in during a significant loss of grip.



 **ALL-WEATHER** This mode ensures maximum safety under adverse weather conditions with gentle accelerator response. The ASR system prevents skidding by modifying power to match road speed during loss of grip.

The 4C is also fitted with Launch Control for masterful, high-performance standing starts. Launch Control is activated by pressing the brake pedal while pushing the accelerator pedal all the way down and squeezing the paddle on the left of the steering wheel. As soon as you release the brake, the system automatically controls the transmission, traction and power to maximize acceleration.



Exceptional talent realized

In almost every aspect of the Alfa Romeo 4C, you can sense the touch of fine hand craftsmanship in each vehicle assembled in the Maserati workshop located in Modena, Italy. Impeccable standards and extensive inspections ensure utmost satisfaction.

Here, the focus is always on evolved technology and top-quality craftsmanship, a combination that leads to the production of cars that is unique in its technical solutions and attention to detail. It's no surprise that the build time for each Alfa Romeo 4C is a full six weeks. At the 4C workshop, the people make the difference. The expert technicians dedicated to the production of this Alfa Romeo have each undergone 500 hours of special training. They all have an enviable level of in-depth technical knowledge as a result. Assembly technicians follow every phase of the process personally and, at the end of the line, perform rigorous quality control tests to ensure that all components function perfectly. The finished car is then handed over to expert test drivers for dynamic performance testing under a wide range of conditions. Only then is a new Alfa Romeo 4C declared ready to take on the road.



The influence of high culture

Perhaps it's no coincidence that Alfa Romeo was born in Milan, Italy — the fashion capital of the world. It's a place that understands that the heart must have a say in even the most practical decisions.

The Alfa Romeo 4C Coupe and 4C Spider continue an Alfa Romeo tradition of performance-oriented lines and proportions. Inspired by the 1967 Tipo 33 Stradale, considered by many to be one of the most beautiful cars ever made, the 4C models are just as shapely, and offer the classic Alfa Romeo V-shaped "plunging neckline" Scudetto grille. Front and rear overhangs are dramatically short, and dimensions are aerodynamically and dynamically optimized. The famous Alfa Romeo badge confirms what all these visual cues are saying: this is a legitimate sports car.



4C Coupe: individually inspired



Personalized performance means giving owners powerful options with the Alfa Romeo 4C Coupe. Beyond awe-inspiring mechanics and design, the choices offered by the 4C Coupe turn driving into a personal affair. Choose from four wheel designs, four caliper colors, available premium leather trim or microfiber seating, body-color or carbon fiber spoiler and mirror covers (also available in satin titanium, or carbon fiber with an Italian flag inlay), and more. In a car known for its close bond with the road, it all makes for a stronger connection with the driver, as well.



Epitome of allure: the 4C Spider



4C Spider shown in Giallo Prototipo with Akrapovič dual mode exhaust.

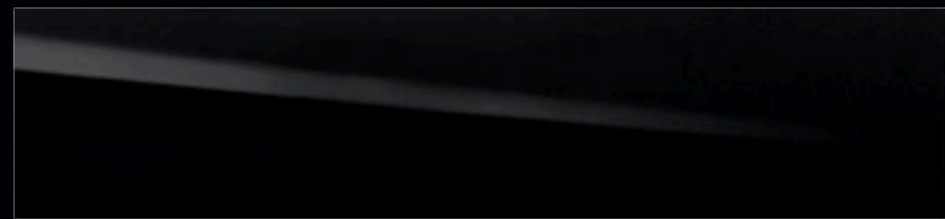


The top-down Alfa Romeo 4C Spider introduces a few more elements to the 4C thrill ride — like wind, sun and some gleaming carbon fiber touches. Thanks to the rigid 4C chassis, few structural modifications were needed to unveil the sky above — a carbon fiber windshield surround and carbon fiber halo complement the ultra-light carbon fiber monocoque chassis. Designed exclusively for the 4C Spider, the soft top can be easily removed, folded, and stowed in a dedicated case in the trunk. Rich interior details include a premium leather instrument panel with accent stitching, available carbon fiber-trimmed vents, and your choice of seating in Red leather trim, Tobacco leather trim, Black leather trim or Black leather/microfiber, with contrast stitching available.

PAINT OPTIONS



White



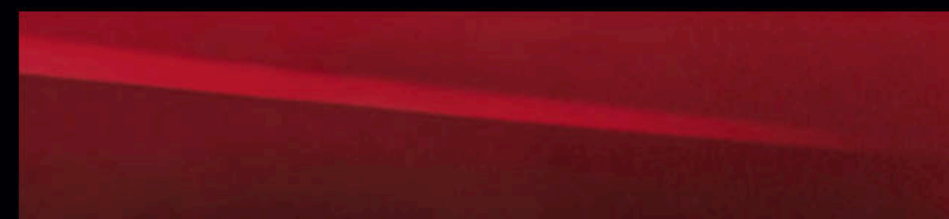
Black



Basalt Gray Metallic



Alfa Rosso



Rosso Competizione Tri-Coat



Madreperla White Tri-Coat



Giallo Prototipo

INTERIOR OPTIONS



A
Black fabric with Red accent stitching



B
Black leather trim with Red accent stitching



C
Black leather trim with Yellow accent stitching



D
Black leather trim and microfiber with Red accent stitching



E
Black leather trim and microfiber with Yellow accent stitching



F
Black/Tobacco leather trim with Dark Brown accent stitching



G
Red leather trim with Black accent stitching

	A*	B	C	D	E	F	G
PAINT COLOR							
Black	●	○	○	○	○	○	○
White	●	○	○	○	○	○	○
Alfa Rosso	●	○	—	○	—	○	○
Giallo Prototipo	—	—	●	—	○	—	—
METALLIC							
Basalt Gray	●	○	○	○	○	○	○
TRI-COAT PAINT							
Madreperla White	●	○	—	○	—	○	○
Rosso Competizione	●	○	—	○	—	○	—

● Standard ○ Optional — Not available

4C COUPE WHEELS



17-inch - 18-inch Bright aluminum



17-inch - 18-inch Matte Black diamond-finish aluminum*



18-inch - 19-inch Bright 5-hole aluminum



18-inch - 19-inch Dark 5-hole aluminum

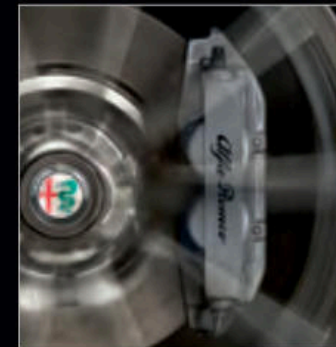


18-inch - 19-inch Bright fan-spoke aluminum



18-inch - 19-inch Dark fan-spoke aluminum

BRAKE



Silver brake calipers

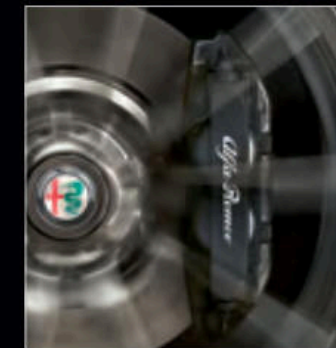


Yellow brake calipers

CALIPERS



Red brake calipers



Black brake calipers

4C SPIDER WHEELS



17-inch - 18-inch Bright aluminum



17-inch - 18-inch Dark aluminum



18-inch - 19-inch Bright 5-hole aluminum



18-inch - 19-inch Dark 5-hole aluminum



18-inch - 19-inch Bright fan-spoke aluminum



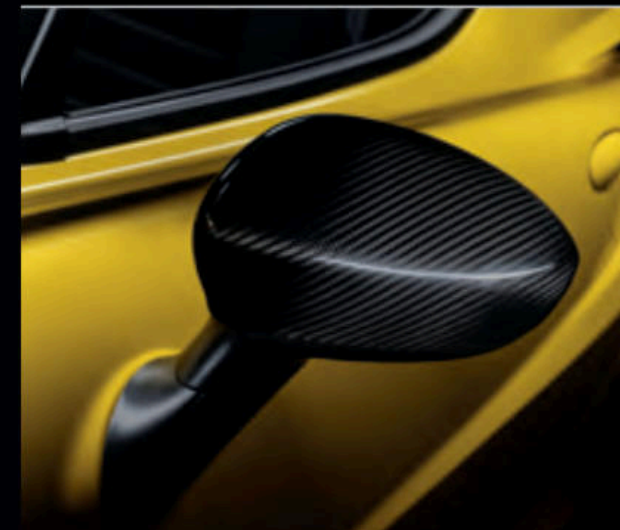
18-inch - 19-inch Dark fan-spoke aluminum

EQUIPMENT	4C COUPE	4C SPIDER
EXTERIOR EQUIPMENT		
17-inch - 18-inch Bright aluminum wheels	•	•
17-inch - 18-inch Matte Black diamond-finish aluminum wheels*	◦	—
17-inch - 18-inch Dark aluminum wheels†	—	◦
18-inch - 19-inch Bright 5-hole aluminum wheels	◦	◦
18-inch - 19-inch Dark 5-hole aluminum wheels	◦	◦
18-inch - 19-inch Bright fan-spoke aluminum wheels	◦	◦
18-inch - 19-inch Dark fan-spoke aluminum wheels	◦	◦
205/45R17 and 235/40R18 Pirelli® P Zero AR Three-Season tires	•	•
205/40R18 and 235/35R19 Pirelli P Zero AR Three-Season tires	◦/◻	◦/◻
205/40R18 and 235/35R19 Pirelli P Zero Performance AR Racing tires (requires Coupe Track Package 1/2 or Spider Track Package 3/4)	◦	◦
Silver brake calipers	•	•
Black brake calipers	◦	◦
Yellow brake calipers	◦	◦
Red brake calipers	◦	◦
Akrapovič dual-mode exhaust system featuring dual, center-mounted tips with carbon fiber surround	◦	◦
ParkSense® rear park assist† (included with Convenience Group)	◻	◻
Carbon fiber roof	◦	—
Carbon fiber halo	—	◦
Carbon fiber spoiler (included with Coupe Track Package 1/2)	◻	—
Front fascia with carbon fiber vents	◦	◦
Body-color spoiler	◦	—
Body-color exterior mirrors	•	•
Satin titanium-finish exterior mirrors	◦	◦
Carbon fiber exterior mirrors (requires Coupe Track Package 1/2 or Spider Track Package 3/4)	◻	◻
Carbon fiber exterior mirrors with Italian flag inlay (requires Coupe Track Package 1/2 or Spider Track Package 3/4)	◻	◻
Power heated exterior mirrors	•	•
LIGHTING SYSTEM		
LED Daytime Running Lights (DRLs) and taillamps	•	•
Halogen projector headlamps	•	•
Bi-xenon projector headlamps	◦	◦
PERFORMANCE		
Sport-tuned suspension	•	•
Race-tuned suspension with unique front and rear sway bars and performance-tuned shock absorber (included with Coupe Track Package 1/2 and Spider Track Package 3/4)	◻	◻
SAFETY		
Electronic Stability Control (ESC)†	•	•
Hydraulic Brake Assist (HBA), Anti-lock Brake System (ABS), All-speed traction control and Hill Start Assist (HSA)	•	•
Driver and front-passenger air bags;‡ driver's-side knee air bag;‡ door-mounted side thorax air bags;‡	•	•
Tire Pressure Monitoring System (TPMS)	•	•
Tire service kit	•	•
Engine immobilizer	•	•

EQUIPMENT (CONTINUED)	4C COUPE	4C SPIDER
PACKAGES		
Convenience Group — Includes cruise control, vehicle security alarm and ParkSense® rear park assist‡	◦	◦
Carbon Fiber Interior Trim Group — Includes carbon fiber instrument-panel bezel, shift bezel, air vents and cluster bezel	◦	◦
Coupe Track Package 1 — Includes carbon fiber rear spoiler, performance flat-bottom steering wheel wrapped with Black leather and microfiber with accent stitching, race-tuned suspension and carbon fiber exterior mirrors or carbon fiber exterior mirrors with Italian flag inlay	◦	—
Coupe Track Package 2 — Includes carbon fiber rear spoiler, race-tuned suspension and carbon fiber exterior mirrors or carbon fiber exterior mirrors with Italian flag inlay	◦	—
Spider Track Package 3 — Includes performance flat-bottom steering wheel wrapped with Black leather and microfiber with accent stitching, race-tuned suspension and carbon fiber exterior mirrors or carbon fiber exterior mirrors with Italian flag inlay	—	◦
Spider Track Package 4 — Includes race-tuned suspension and carbon fiber exterior mirrors or carbon fiber exterior mirrors with Italian flag inlay	—	◦
INTERIOR EQUIPMENT		
Leather-wrapped performance flat-bottom steering wheel	•	•
Performance flat-bottom steering wheel wrapped with Black leather trim and microfiber with Red accent stitching (included in Coupe Track Package 1 or Spider Track Package 3)	◻	◻
Steering wheel-mounted paddle shifters	•	•
Cruise control (included with Convenience Group)	◻	◻
Sport seats in Black leather trim with accent stitching	•	—
Sport seats in Black leather trim with accent stitching	◦	•
Sport seats in Red leather trim with accent stitching	◦	◦
Sport seats in Black/Tobacco leather trim with accent stitching	◦	◦
Sport seats in Black leather trim and microfiber fabric with accent stitching	◦	◦
Aluminum pedals and footrest	•	•
Aluminum passenger footrest	•	•
Front floor mats with embroidered logo	•	•
Cup-holder insert	•	•
Console-mounted electric gear selector	•	•
Black leather-wrapped instrument and door panels with accent stitching	•	•
Rear console lockable leather bag	•	•
Vehicle security alarm (included with Convenience Group)	•	◻
ELECTRICAL SYSTEM		
Remote keyless entry	•	•
Power windows	•	•
12-volt auxiliary power outlet	•	•
AM/FM radio with iPod® control, USB and SD card connectivity, Bluetooth® for hands-free calling* and music streaming	•	•
Premium speaker package	•	•
Alpine® Premium Audio System with subwoofer	◦	◦
INSTRUMENTATION		
4-position, Alfa DNA Pro Drive Mode Selector with Race mode	•	•
7-inch full-color (TFT) with high-impact graphics	•	•
Air conditioning system	•	•
ACCESSORIES		
Red car cover with Alfa Romeo 4C logo	◦	◦
Battery charger with 120-volt wall plug	◦	◦

*Not available on 4C Spider. †Not available on 4C Coupe.

• Standard ◦ Optional ◻ Package — Not available



Incredibly, there are ways to rev up 4C Coupe and Spider even more. The available Akrapovič dual-mode center-mounted exhaust with carbon fiber surround makes a memorable audio and visual statement in either model. The 4C Coupe looks especially turned-out with the available body-color spoiler and satin titanium-finish mirrors, playing up the sophisticated side of the 4C. Alternatively, the race-inspired carbon fiber mirror covers and rear spoiler — both part of special Coupe and Spider Track packages — signal a deep passion for motoring shared by both the owner and Alfa Romeo. Striking Bi-xenon projector headlamps serve to heighten 4C looks and the surrounding view, with sleek carbon fiber inserts and advanced lighting capability.

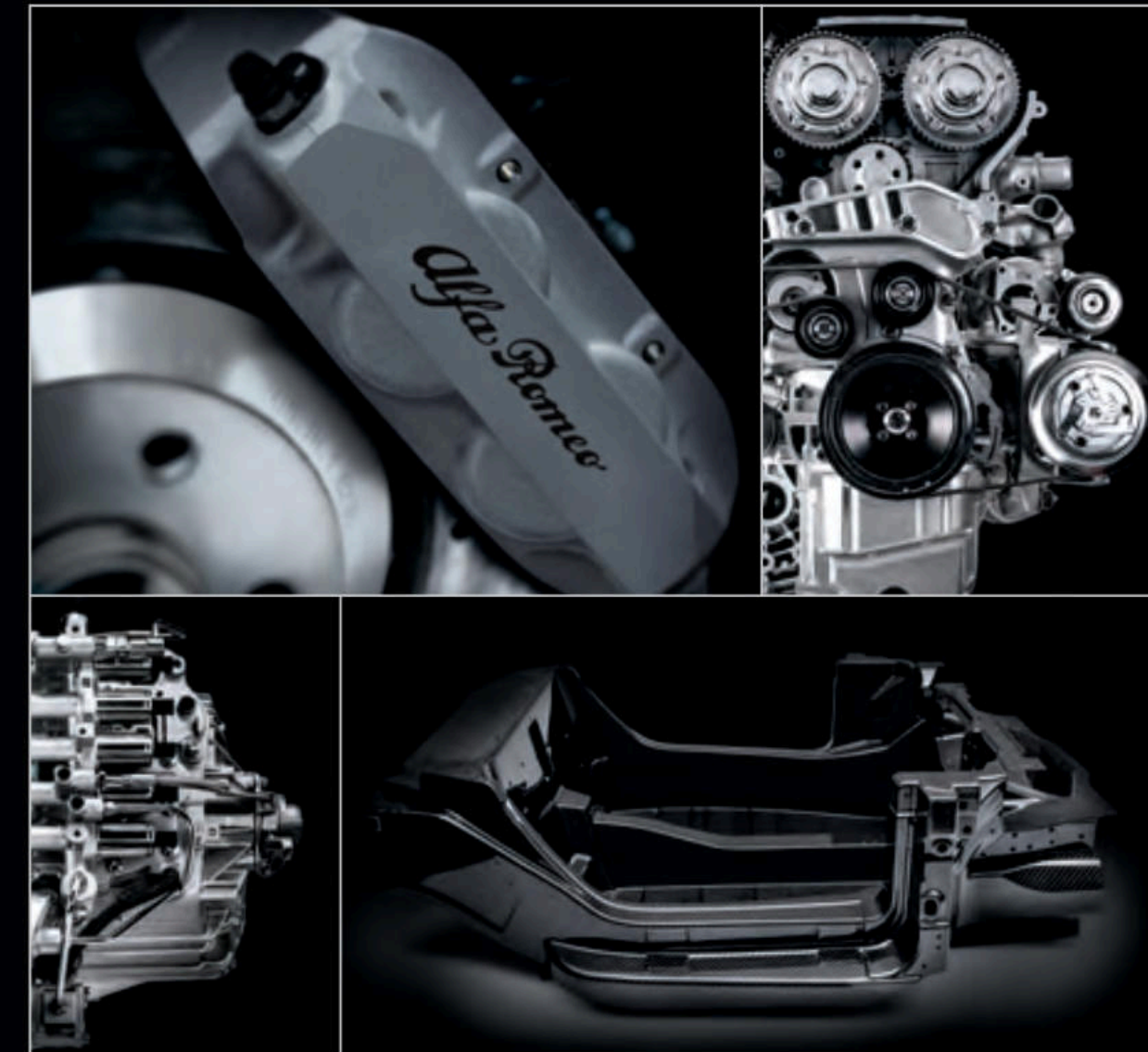


Alfa Romeo 4C design is a standout in any setting, starting with surroundings that were created specifically for its driver. Front and center, the 4C informs drivers with clear and precise driving stats from its full-digital instrument cluster — catching the eye with a Thin Film Transistor (TFT) display and carbon fiber cluster surround. Command is in your hands with the available Sport steering wheel in leather with microfiber insert and Red stitching, part of Carbon Fiber Interior Trim Group. Available Red leather-trimmed bucket seats are perfectly positioned to enlist the four-position Alfa DNA Pro Drive Mode Selector. Accentuating its exquisite lines and protecting it at the same time, the custom-cut Red car cover with Alfa Romeo 4C logo makes a practical yet gorgeous addition.

TECHNICAL SPECIFICATIONS

ENGINE	
Type	All-aluminum 1750 turbocharged 4-cylinder
Position	Mid-engine
Orientation	Transverse
Displacement (cc)	1742
Maximum power (hp)	237 hp
Maximum torque (lb.-ft. at rpm)	258 lb.-ft. between 2,200 – 4,250 rpm
DRIVING-MODE SELECTOR	
Type	Alfa DNA Pro Drive Mode Selector with Race mode
Positions	All-Weather, Natural, Dynamic, Race
TRANSMISSION	
Gearbox	ALFA TCT with dry dual clutch, paddle controls and Launch Control
Number of gears	6 + R
Drive	Rear
Differential	Electronic
CHASSIS	
Type	Carbon fiber monocoque chassis
Front suspension	Double-wishbone
Rear suspension	MacPherson
Front brakes (mm)	Dual-cast, cross-drilled, self-ventilated 305 x 28 discs Brembo® fixed 4-piston calipers
Rear brakes (mm)	Cross-drilled, self-ventilated 292 x 22 discs
Standard front tires	205/45R1788Y XL Three-Season Performance
Standard rear tires	235/40R1895Y XL Three-Season Performance
STEERING	
Steering box	Rack and pinion
PERFORMANCE	
Acceleration 0 – 60 mph (secs)	4.1
Top speed (mph)	160
Maximum deceleration under braking (g)	1.25
Maximum lateral acceleration (g)	1.1
CAPACITIES — WEIGHTS	
Curb weight (EPA) (lb.)	2,465 4C Coupe 2,487 4C Spider
Fuel tank (gal)	10.5
FUEL ECONOMY	
EPA est. city/hwy/combined (mpg)*	24 / 34 / 28
DIMENSIONS	
Number of seats	2
Length (inches)	157
Width (inches)	73.5
Height (inches)	46.6 4C Coupe 46.7 4C Spider
Wheelbase (inches)	93.7
Luggage compartment capacity (cu. ft.)	3.7

*Based on 2017 EPA estimated ratings. Actual mileage may vary.



1. No system, no matter how sophisticated, can repeal the laws of physics or overcome careless driving actions. Performance is limited by available traction, which snow, ice and other conditions can affect. When the ESC warning lamp flashes, the driver needs to use less throttle and adapt speed and driving behavior to prevailing road conditions. Always drive carefully, consistent with conditions. Always wear your seat belt. 2. Certified to federal regulations that allow less forceful air bags. Always wear seat belts. Rearward-facing child seats should never be used in front of an air bag. 3. Always look before proceeding, electronic drive aid is not a substitute for conscientious driving; always be aware of your surroundings. 4. Requires a mobile phone equipped with the Bluetooth Hands-Free Profile.

©2017 FCA US LLC. All Rights Reserved. Alfa Romeo, Alfa Romeo 4C and Maserati are registered trademarks of FCA Group Marketing S.p.A., used with permission. ParkSense is a registered trademark of FCA US LLC.

Alpine and the Alpine logo are registered trademarks of Alpine Electronics, Inc. All Rights Reserved. Bluetooth is a registered trademark of Bluetooth SIG, Inc. Brembo is a registered trademark of Freni Brembo S.p.A. Facebook and logo are registered trademarks of Facebook, Inc. Instagram is a registered trademark of Instagram, Inc. iPad, iPhone, iPod and iTunes are registered trademarks of Apple Inc. All rights reserved. Pirelli is a registered trademark of Pirelli Tyre S.p.A. The Twitter logo is a service mark of Twitter, Inc.

About this catalog, since the time of printing, some of the information you'll find in this catalog may have been updated. Ask your dealer for details. Some of the equipment shown or described throughout this catalog may be available at extra cost. Specifications, descriptions, illustrative materials and all competitive comparisons contained herein are as accurate as known at the time this publication was approved for printing. FCA US LLC reserves the right to discontinue models at any time or change specifications without notice or without incurring obligation. Some options may be required in combination with other options. For the price of the model with the equipment you desire, or verification of specifications contained here, see your Alfa Romeo dealer.



@alfaromeousa



BEYOND THE WINNER'S CIRCLE

The unique aesthetic that is Alfa Romeo, derived from over a century's worth of automotive innovation and finish-line wins, now extends beyond its four extraordinary wheels. An exclusive selection of professional, active, travel and home accessories feature the Alfa Romeo logo along with signature carbon fiber and leather design cues. Enthusiasts, start your collection.

shopalfaromeousa.com

