

ALPINE
PURE &
LÉGENDE

ALPINE





Preface

Pure is the all-new A110 at its lightest and most driver-focused, making it the closest in spirit to the original A110 Berlinette that won the Monte Carlo Rally in 1973. One-piece Sabelt bucket seats, weighing just 13.1kg each and ten-spoke 17" alloy wheels underscore Pure's agility and handling precision. Meanwhile, leather and microfibre seat upholstery combined with a matte carbon fibre interior trim, hint at Pure's sporting intent.

Légende's grand touring character is highlighted by its six-way adjustable comfort seats, black or brown leather upholstery and upgraded Focal audio system. Gloss carbon fibre interior trim and 18" diamond-turned alloy wheels suggest a refined persona, while parking sensors with a rear-parking camera enhance Légende's effortless usability.

With the same powertrain and suspension settings as Pure, Légende remains true to Alpine's core principle of absolute agility.

Standard features

COLOURS

	AT10 Pure	AT10 Légende (Black Int.)	AT10 Légende (Brown Int.)
Standard colour: Blanc Glacier (pearl)	●	●	●

EXTERIOR

Two-seat coupe	●	●	●
Double-bubble roof	●	●	●
Aluminium frame and body	●	●	●
Flat underbody	●	●	●
Rear diffuser	●	●	●
Chrome centre exhaust	●	●	●
Electric, heated, aspherical wing mirrors	●	●	●
Front and rear parking sensors with reversing camera	○	●	●
Tinted rear glass with third stop light	●	●	●
French flags on C-pillars	●	●	●
Alpine logo on front and rear bumpers	●	●	●
Aerodynamic windscreen wipers	●	●	●
4 LED front headlamps	●	●	●
LED tail lights with sweeping turn signals, stop lights and reversing lights	●	●	●
"Follow me home" headlamps	●	●	●

STORAGE

96 L front trunk	●	●	●
100 L rear trunk	●	●	●

● Standard feature ○ Optional feature

Standard features

ENGINE

	AT10 Pure	AT10 Légende (Black Int.)	AT10 Légende (Brown Int.)
Mid-rear engine	●	●	●
4-cylinder 1.8 L turbo engine with maximum power of 252 HP (185kw)	●	●	●
45 L fuel tank	●	●	●

TRANSMISSION

7-speed dual-clutch automatic transmission	●	●	●
--	---	---	---

PERFORMANCE

Bespoke engine calibration with driving mode selector (Normal, Sport and Track)	●	●	●
Lightweight chassis and body - 96% aluminium	●	●	●

ROAD HOLDING / BRAKES / CHASSIS

17" 10-spoke wheels	●	—	—
18" Légende wheels with black diamond-turned finish	○	●	●
205/40 R18 front tyres	○	●	●
235/40 R18 rear tyres	○	●	●
205/45 R17 front tyres	●	—	—
235/45 R17 rear tyres	●	—	—
Front & rear braking system (296mm diameter)	●	●	●
4-piston fixed front calipers, single-piston fixed rear calipers	●	●	●
Anthracite brake calipers	●	●	●
Parking brake integrated in rear brake caliper	●	●	●
Double-wishbone suspension system at front and rear	●	●	●

● Standard feature ○ Optional feature — Feature not available

Standard features

INTERIOR

	AT10 Pure	AT10 Légende (Black Int.)	AT10 Légende (Brown Int.)
Paddle shifters on steering column	●	●	●
Steering wheel with black Alpine logo in centre, leather- and microfibre-wrapped rim with "12 o'clock" marker and Alpine Blue topstitching	●	●	—
Steering wheel with black Alpine logo in centre, leather- and microfibre-wrapped rim with brown "12 o'clock" marker and Alpine Blue topstitching	—	—	●
Adjustable steering wheel reach and rake	●	●	●
Manual rear-view mirror	●	●	●
Standard pedals	●	—	—
Aluminium pedals	○	●	●
Aluminium driver footrest	●	●	●
Sabelt one-piece bucket seats with lightweight design, in leather and microfibre - 13.1kg each.	●	—	—
6-way adjustable Sabelt Comfort seats	○	●	●
Aesthetic black & matte carbon fibre interior trim	●	—	—
Aesthetic black & gloss carbon fibre interior trim	—	●	—
Aesthetic brown & gloss carbon fibre interior trim	—	—	●
Body-colour trim on the upper portion of the door panels	●	●	●
Contrasting Alpine Blue stitching on the instrument panel, seats and door panels	●	●	●
French flag on the driver and passenger door panels	●	●	●
Stainless steel door sill with Alpine logo	●	●	●
Transmission controls (Parking / Neutral / Drive) integrated into the centre console	●	●	●
Dome lights	●	●	●

CLIMATE CONTROL / WINDOWS

Automatic climate control with particle filter	●	●	●
Defroster	●	●	●
Touch-control electric windows	●	●	●

● Standard feature ○ Optional feature — Feature not available

Standard features

MULTIMEDIA / AUDIO

	AT10 Pure	AT10 Légende (Black Int.)	AT10 Légende (Brown Int.)
Multimedia system with 7" touch screen	●	●	●
GPS with packaged Europe maps	●	●	●
Alpine mySPIN: smartphone mirroring that pairs with iOS and Android via a dedicated app	●	●	●
Standard audio system	●	—	—
Lightweight Focal audio system with 2 speakers and 2 tweeters	○	●	●
Two USB ports for simultaneous mobile charging and access to playlists	●	●	●
Bluetooth technology	●	●	●

SAFETY

Emergency brake assist	●	●	●
Anti-lock braking system - ABS	●	●	●
Cruise control with speed limiter	●	●	●
Hill-start assist (HSA)	●	●	●
Deactivatable stability control system (Track)	●	●	●
Driver & passenger airbags	●	●	●
Inflation & repair kit: compressor & cartridge	●	●	●
Anti-theft alarm	●	●	●

WARRANTY

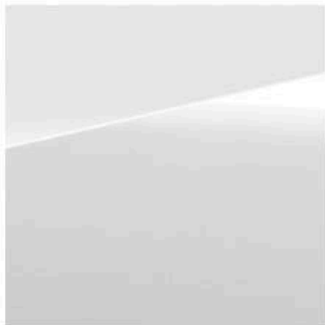
3 years / 100,000 km	●	●	●
----------------------	---	---	---

● Standard feature ○ Optional feature — Feature not available

Optional features

COLOURS

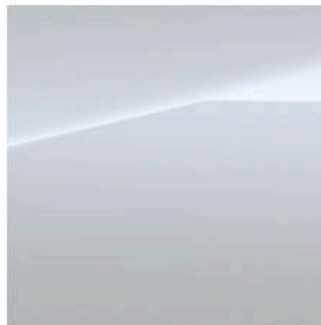
	AT10 Pure	AT10 Légende	Description
Blanc Glacier	●	●	–
Bleu Alpine	○	○	<i>A specific metallic paint with a coloured varnish which gives it a liveliness and deepness</i>
Blanc Irisé	○	○	<i>New triple coated and topped with a special finishing varnish which reflects blue hues under lighting</i>
Noir Profond	○	○	–
Bleu Abysse	○	○	<i>New specific paint for Pure and Légende</i>
Gris Tonnerre	○	○	<i>New specific paint for Pure and Légende</i>



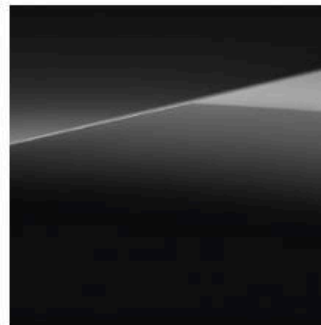
Blanc Glacier



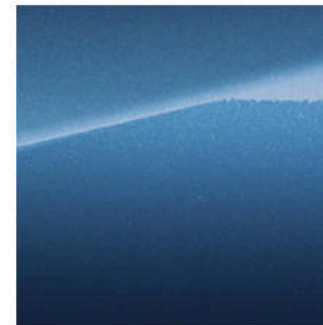
Bleu Alpine



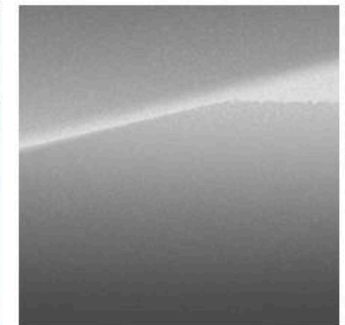
Blanc Irisé



Noir Profond



Bleu Abysse



Gris Tonnerre

● Standard feature ○ Optional feature

Optional features

Active sports exhaust with a thrilling soundtrack

With Sport or Track mode selected, the active sports exhaust boosts the A110's sound signature to give an even more emotive driving experience.

Upgraded Brembo brakes with enhanced stopping power

Measuring 320mm in diameter with four-piston calipers on the front axle, the powerful Brembo brakes offer the best stopping performance on the racetrack or on a winding mountain road.



Active sports exhaust



High-performance braking system

	AT10 Pure	AT10 Légende	Description
EXTERIOR			
Mirror package	<input type="radio"/>	<input type="radio"/>	Foldable exterior wing mirror and anti-glare system
Rear parking sensors	<input type="radio"/>	—	Ultrasonic parking sensor system in the rear bumper that emits an audible signal indicating the amount of space behind the vehicle
Front & rear parking sensors	<input type="radio"/>	—	Ultrasonic parking sensor system in the front and rear bumpers that emits an audible signal indicating the amount of space in front of and behind the vehicle
Front & rear parking sensors with reversing camera	<input type="radio"/>	●	Ultrasonic parking sensor system in the front and rear bumpers that emits an audible signal indicating the amount of space in front of and behind the vehicle. Colour camera and guide lines on the navigation screen
Heritage package	<input type="radio"/>	<input type="radio"/>	Chrome rod on the bonnet and the front bumper in the style of the berlinette
Alpine logo on the front wings	<input type="radio"/>	<input type="radio"/>	Chrome Alpine «A» logo
PERFORMANCE			
Active sports exhaust	<input type="radio"/>	<input type="radio"/>	Active-valve sports exhaust with engine noise tailored to the selected driving mode and speed
High-performance front & rear braking system (320mm diameter)	<input type="radio"/>	<input type="radio"/>	Brembo bi-material brakes designed to cool quickly, even in difficult conditions. The innovative calipers have an integrated parking brake, shaving off 1.25kg each. The pursuit of weight savings in the A110 has also reducing braking time, improving performance and safety

● Standard feature ○ Optional feature — Feature not available

Optional features

WHEELS / BRAKES	A110 Pure	A110 Légende	Description
18" Dark grey diamond-turned Sérac wheels	<input type="radio"/>	<input type="radio"/>	18-inch wheels with 205/40R and 235/40R tyres
18" Légende wheels with gloss black diamond-turned finish	<input type="radio"/>	<input checked="" type="radio"/>	18-inch wheels with 205/40R and 235/40R tyres
18" Fuchs forged wheels	<input type="radio"/>	<input type="radio"/>	Forged from a single block of aluminium using high-pressure presses, Otto Fuchs technology offers weight savings of up to 15% compared with cast wheels and is tougher, improving the A110's handling and safety. Wheel weight: front 9.10kg / rear 9.50kg
Bleu Alpine brake calipers	<input type="radio"/>	<input type="radio"/>	



18" Dark grey diamond-turned Sérac wheels



18" Légende wheels with gloss black diamond-turned finish



18" Fuchs forged wheels

Otto Fuchs wheels add strength and lightness
18" Otto Fuchs alloy wheels, forged to enhance strength and reduce weight, reinforce the A110's handling, poise and agility

● Standard feature ○ Optional feature

Optional features



6-way Sabelt Comfort seat



Bucket racing seats lightweight Sabelt design in black leather and microfibre upholstery

INTERIOR

	AT10 Pure	AT10 Légende	Description
Bleu Alpine logo in centre of steering wheel	<input type="radio"/>	<input type="radio"/>	<i>Replaces the black logo on the steering wheel</i>
Aluminium pedals	<input type="radio"/>	<input checked="" type="radio"/>	<i>Brake and accelerator pedals with matching footrest</i>
Aluminium passenger footrest	<input type="radio"/>	<input type="radio"/>	<i>Improves support in the passenger seat. Matches the driver footrest</i>
6-way Sabelt Comfort seats (unheated)	<input type="radio"/>	<input checked="" type="radio"/>	<i>Leather driver and passenger seats with adjustable backrest, height and fore-and-aft position</i>
6-way Sabelt Comfort seats (heated)	<input type="radio"/>	<input type="radio"/>	<i>Selection of two heating settings + OFF mode</i>
Floormat with Alpine logo and blue topstitching	<input type="radio"/>	<input type="radio"/>	<i>In the colour of the carpeting. Includes driver and passenger mats</i>
Storage package	<input type="radio"/>	<input type="radio"/>	<i>Cargo net behind the passenger seat + storage case</i>

● Standard feature ○ Optional feature

Optional features

MULTIMEDIA / AUDIO	AT10 Pure	AT10 Légende	Description
Focal audio system	<input type="radio"/>	<input checked="" type="radio"/>	Two 165 mm flax cone speakers and two aluminium / magnesium inverted dome tweeters, directed toward the front of the vehicle interior
Premium Focal audio system	<input type="radio"/>	<input type="radio"/>	Two 165 mm flax cone speakers and two aluminium / magnesium inverted dome tweeters, directed toward the front of the vehicle interior + amplifier and subwoofer for more immersive sound
Alpine Telemetrics	<input type="radio"/>	<input type="radio"/>	Displays technical data on the multimedia screen in the centre of the dashboard, including oil and water temperature, torque and power curves, and telemetric data such as performance, acceleration measurements, and lateral and longitudinal acceleration forces



Alpine Telemetrics



Inverted dome tweeters



Premium Focal audio system

Focal Premium audio system for richer sound
 With two speakers, two additional tweeters and a subwoofer, the Focal Premium audio system delivers an enriched sound quality with deep bass notes.

● Standard feature ○ Optional feature

Technical specifications

ENGINE

Number of cylinders	4
Valves per cylinder	4
Displacement	1,798 cc
Engine power	252 hp (185 kW)
Fuel	Petrol
Maximum torque	320 Nm

TRANSMISSION

Transmission type	Rear-wheel drive
Dual clutch automatic gearbox	7 speeds

CHASSIS

Chassis	Aluminium frame (96%): safety cell, engine mount, front end
Front/Rear axle	Double-wishbone suspension system
Body type	Coupe
Turning circle between kerbs/walls	11.64 m/11.74 m
Brakes	Compact, anthracite aluminium brake calipers with integrated parking brake
Front brake disc diameter	296 mm
Rear brake disc diameter	296 mm
Front tyres (Pure - Légende)	205/45 R17 - 205/40 R18
Rear tyres (Pure - Légende)	235/45 R17 - 235/40 R18

WEIGHT

Min. Kerb weight (Pure - Légende)	1,098 - 1,123 kg
Gross vehicle mass	1,365 kg

PERFORMANCE

Maximum speed	250 km/h
0-100 km/h	4.5 s
400 metres	12.7 s
1,000 metres	23.2 s

FUEL EFFICIENCY/EMISSIONS*

CO ₂	141 g/km
Overall fuel economy	6.2 l/100 km
Emission standard	NEDC

DIMENSIONS

Wheelbase	2,420 mm
Length	4,180 mm
Width	1,798 mm
Max. width with door mirrors unfolded	1,980 mm
Height	1,252 mm

* Provisional data subject to official homologation.

PURE





LÉGENDE



Although every effort has been made to ensure that the information contained within this brochure is as accurate and up to date as possible, Alpine reserves the right to modify its models without notice, including their characteristics, specifications, equipment and accessories. Brochures inevitably become out of date or inaccurate in some respects, in that such price, characteristics, specifications equipment, or accessories may be changed after the publication date given below and can differ from the descriptions given or the photos displayed. It is therefore necessary to check with your Alpine Centre before purchasing any product that the characteristics, specifications, equipment or accessories of the vehicle on order are as advertised.