



# American Motors

## Eagle 4-WD



American Motors has long been concerned with producing vehicles that would provide efficient, dependable, comfortable and luxurious transportation. With that thought in mind, we present the new American Eagle.

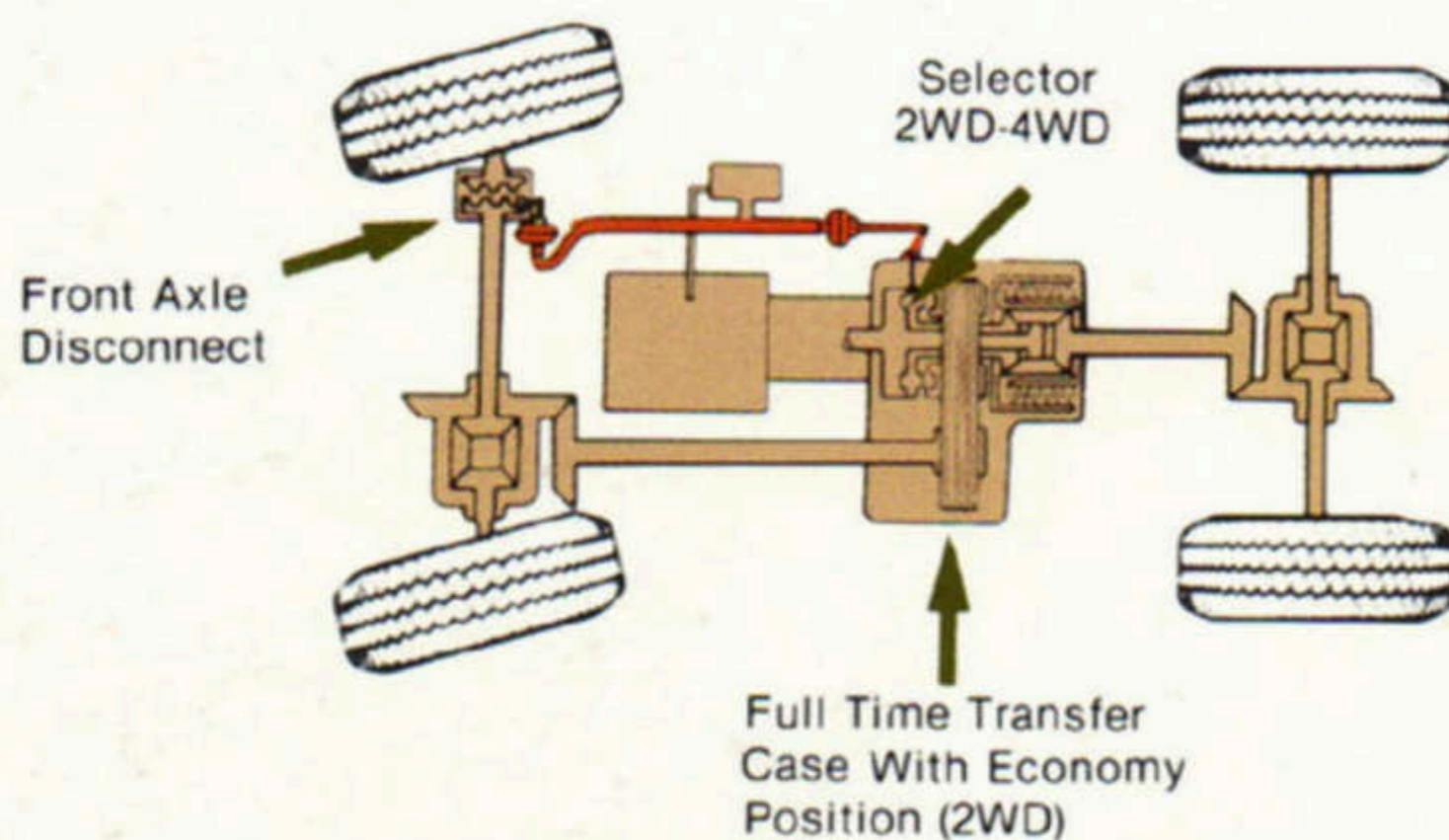
Drawing upon over 40 years of 4-wheel drive expertise and passenger car experience, the new Eagles can offer the security of 4-wheel drive traction in the comfort of a luxury car that's sporty, and fun to drive. These vehicles will take you places that other cars can't.

There are five Eagle styles. The SX/4 is built like a sports car, but when it leaves the road, it leaves other sports cars behind. The kammback adds

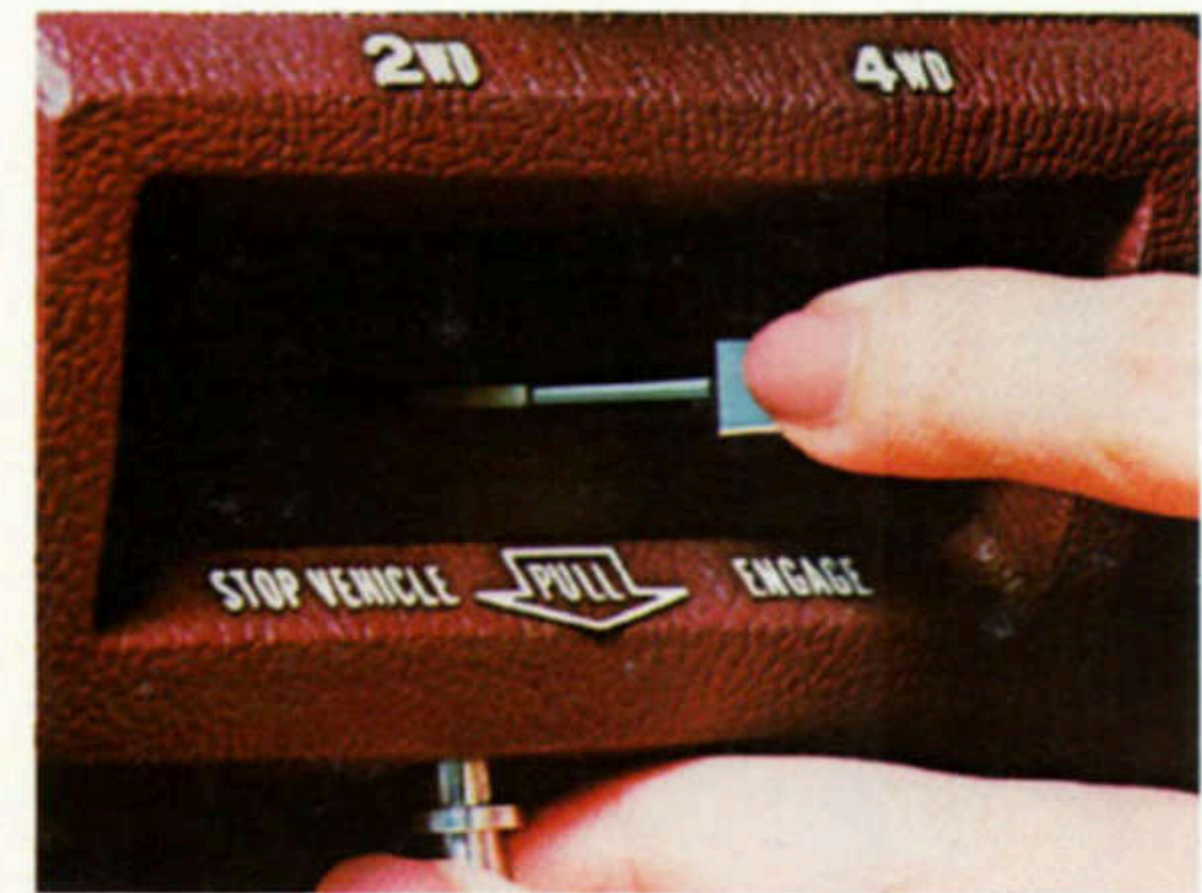
practicality to style, with 4-seat room and a large storage area. The Eagle sedans, in 2-door and 4-door models, bring a new level of luxury to the 4-wheel drive world. And finally, the Eagle Wagon. As attractive, comfortable, and maneuverable as the sedans, yet with the extra benefit of up to 57 cubic feet of cargo space.

And of course you can tailor the Eagle to suit your needs, and wants, with a full array of options. (See next page for details.) Every Eagle is built with 100% galvanized steel on the inside of all exterior body panels and treated with an assortment of rust and corrosion inhibitors. AMC Eagle and SX/4. These cars are built to last.

## THE EAGLE "SELECT DRIVE" SYSTEM



Every Eagle is equipped with AMC's unique "Select Drive" 2-wheel drive/4-wheel drive system, the world's most advanced drive train. By simply flicking a switch, the Eagle can be shifted from the fuel-efficient 2-wheel drive mode when favorable road conditions exist to the sure-footed 4-wheel drive mode for adverse weather or road situations.



## STANDARD FEATURES

**Eagle standard** model sedans and wagon and DL model SX/4 and kammback offer the following standard equipment:

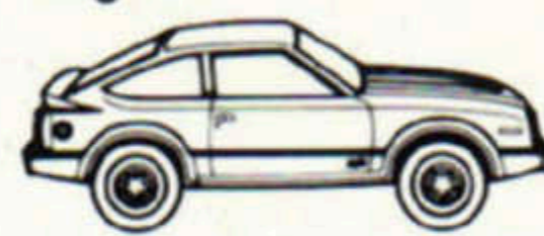
### Functional

- 2.5 litre, 4-cylinder engine
- 4-speed manual transmission
- Select Drive 2WD/4WD system
- Transfer case skid plate
- Power front disc brakes with low drag
- Power steering
- P195/75R 15 radial WSW tires
- 83.3 litre fuel tank (sedans and wagon)
- 79.5 litre fuel tank (SX/4 and kammback)
- Extra quiet insulation
- High level ventilation
- Heater/defroster system
- Front stabilizer bar
- Compact spare tire
- Dual horns

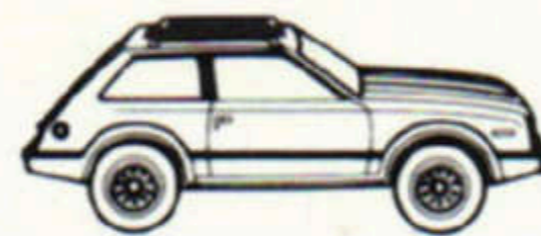
### Exterior

- Landau vinyl roof (2-door sedan)
- Full vinyl roof (4-door sedan)
- Integrated lower body Kraton® treatment
- Black lower bodyside scuff moldings
- Bumper nerf strips
- Quad rectangular headlamps

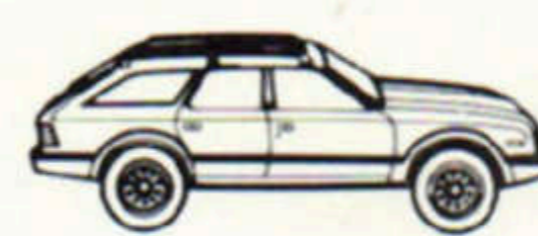
### Eagle



SX/4



Kammback



Wagon



2-Door Sedan



4-Door Sedan

- Styled wheel covers
- Mirror (chrome) - outside driver side (remote control)
- Moldings: drip, backlight surround, and windshield surround
- Bright belt moldings (4-door sedans and wagon)
- Color-keyed backlight moldings (sedans)
- Dual bodyside pinstripes
- Hood ornament (sedans and wagon)
- "4-Wheel Drive" identification
- Eagle medallions

### Interior

- Individual reclining front seats in deluxe grain vinyl (sedans and wagon)
- Reclining bucket front seats in deluxe grain vinyl (SX/4 and kammback)
- Fold down rear seat (wagon)
- Premium headliner and sun visors
- Split folding rear seat (SX/4 and kammback)
- Premium door panels with woodgrain accents

- Quartz digital clock
- Custom color-keyed steering wheel with woodgrain accent
- Woodgrain instrument panel overlay
- Color-keyed carpeting in passenger and cargo areas
- Trunk carpeting (sedans)
- Carpeted spare tire cover (SX/4 and kammback)
- Cigarette lighter
- Lighted ashtray—front
- Ashtrays—rear seat (sedans and wagon)
- Cargo skid strips (wagon)
- Locking cargo storage compartment (wagon)
- Inside hood release
- Dome light
- Key warning buzzer
- Parking brake warning light
- Glove box lock

### Eagle Limited models

are available in 2- and 4-door sedans and wagon body-styles and offer the following standard equipment in addition to or in place of standard model sedan and wagon equipment.

### Exterior

- "Limited" exterior identification
- Mirror (chrome) - outside passenger side (remote control)

### Interior

- Individual reclining seats in Chelsea leather
- Premium door panels with "Limited" identification
- Luxury woodgrain steering wheel
- Deluxe carpeting in passenger area
- Under-dash parcel shelf

### Convenience

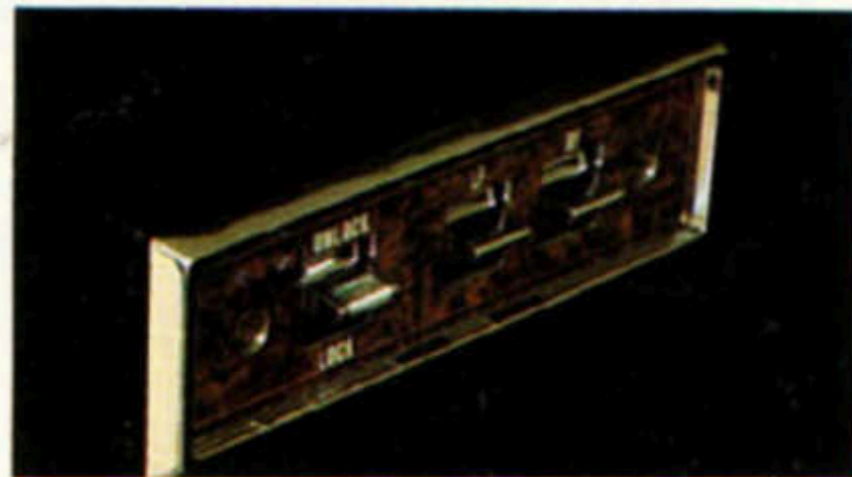
- Power door locks
- AM/FM stereo radio
- Air conditioning system
- Tinted glass
- Power deck lid release (sedans)
- Tilt steering wheel
- Convenience Group
- Light Group
- Roof rack (wagon)
- Protection Group

## OPTIONS

Some options listed are standard on certain models or are included with Sport or other select packages.

### Power

- 6-way power driver's seat (sedans and wagon)
- 6-way power driver's and passenger's seat (sedans and wagon)
- Power lift side windows
- Power door locks
- Power deck lid release (sedan)
- Power liftback release (SX/4)



### Audio

- AM radio
- AM/FM stereo radio
- AM/FM cassette stereo radio
- Electronically tuned AM/FM cassette stereo radio
- AM/FM/CB stereo radio
- Premium audio system
- Power antenna



### Convenience

- Air conditioning system (includes heavy-duty cooling system)
- Light group (includes dome/map light, two courtesy lights, glove box light, engine compartment light, rear door switches on 4-door sedan and wagon, trunk light on sedans, and liftgate dome light switch on wagon and SX/4)
- Convenience group (includes lighted passenger visor mirror, lights-on buzzer and intermittent windshield wipers)
- Gauge package (includes tachometer, clock, volt and oil gauges and vacuum pressure gauge)
- Tinted glass



- Rear window defogger
- Rear window wiper and washer (SX/4 and wagon)
- Pop-up sunroof



- Cruise control (automatic transmission only)
- Tilt steering wheel
- Roof rack (wagon and kammback)
- Tailgate air deflector (kammback)
- Floor shift console (required with Gauge Package)
- Halogen headlamps
- Halogen fog lamps
- Parcel shelf
- Right remote control outside sport mirror (with Sport Package)
- Right remote control outside chrome mirror
- Electric control dual outside chrome mirrors
- Metric speedometer

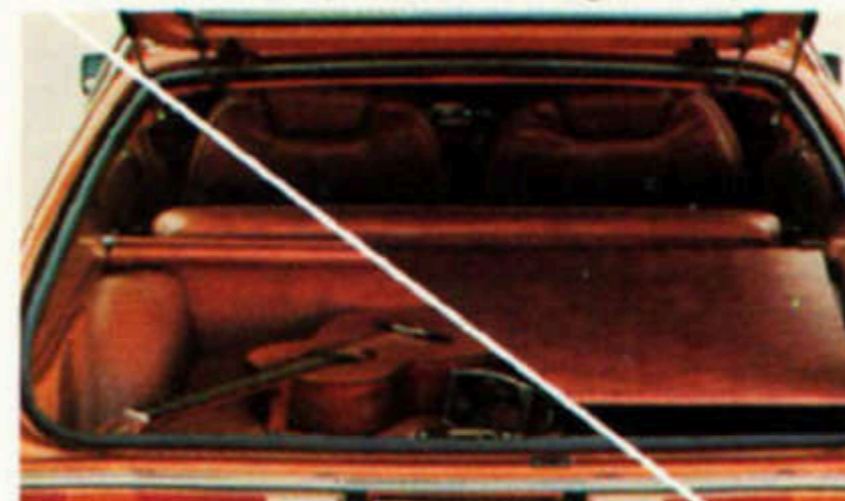


### Appearance

- Woodgrain bodyside panels (wagon)
- Rear spoiler (with SX/4 Sport Package only)
- Eagle SX/4 Sport Package includes the following equipment: Interior—color-keyed sport steering wheel, floor shift console and parcel shelf. Exterior—low gloss black Kraton wheel flares; rocker panel and wheel flare trap moldings; color coordinated inserts on bodyside moldings; bumper nerf strips and hood

molding; black bumpers and bumper guards; black-out treatment around taillamps; black accents on taillamp lens; black grille insert, headlamp bezels, drip, belt, windshield and liftgate moldings; black door frames, "B" pillar and left remote sport mirror, "Sport" nameplates. Functional—P195/75R BSW Arriva® steel radial tires; Halogen headlamps and foglamps.

- Eagle 2-door Sedan/Wagon Sport Package includes the following equipment: Interior—color-keyed leather sport steering wheel with woodgrain accents. Exterior—low gloss black Kraton wheel flares; rocker panel and flare trap moldings; color-coordinated inserts on bodyside moldings, bumper nerf strips and hood molding; black bumpers and bumper guards; silver "4x4" graphics on doors; black accents on taillamp lens; black grille insert, headlamp bezels, windshield moldings; black door frames, "B" pillar and left remote sport mirror; "Sport" nameplates; black quarter window insert (sedan only). Functional—P195/75R15 BSW Arriva steel radial tires; Halogen headlamps and fog lamps.



### Protection

- Protection Group (includes bumper guards, door edge guards and floor mats)
- Bumper guards
- Locking gas cap
- Bodyside scuff moldings
- Front suspension skid plate
- Retractable cargo area cover (Eagle Wagon)

### Heavy-Duty

- Light-Duty Trailer Towing Package (sedan and wagon) includes the following equipment: Bumper-mounted hitch, 5-connector wiring harness and vehicle-to-trailer wiring kit (for trailers up to 900 kg.)
- Medium-Duty Trailer Towing Package (sedan and wagon) includes equalizing hitch, 7-connector wiring harness,

vehicle-to-trailer wiring kit and auxiliary transmission oil cooler (for trailers up to 1575 kg.)

- Extra-duty suspension package
- Automatic load leveling air shocks (sedan and wagon)
- Cold Climate Group (includes engine block heater and extra coolant protection)
- 4-cylinder heavy-duty cooling (includes heavy-duty radiator and viscous drive fan)
- 6-cylinder maximum cooling (includes special maximum-duty radiator)

### Tires

- P195/75R15 Arriva steel radial BSW
- P195/75R15 Arriva steel radial WSW
- P215/65R15 Eagle G.T. steel radial OWL



- 5-speed full synchromesh, manual overdrive transmission.

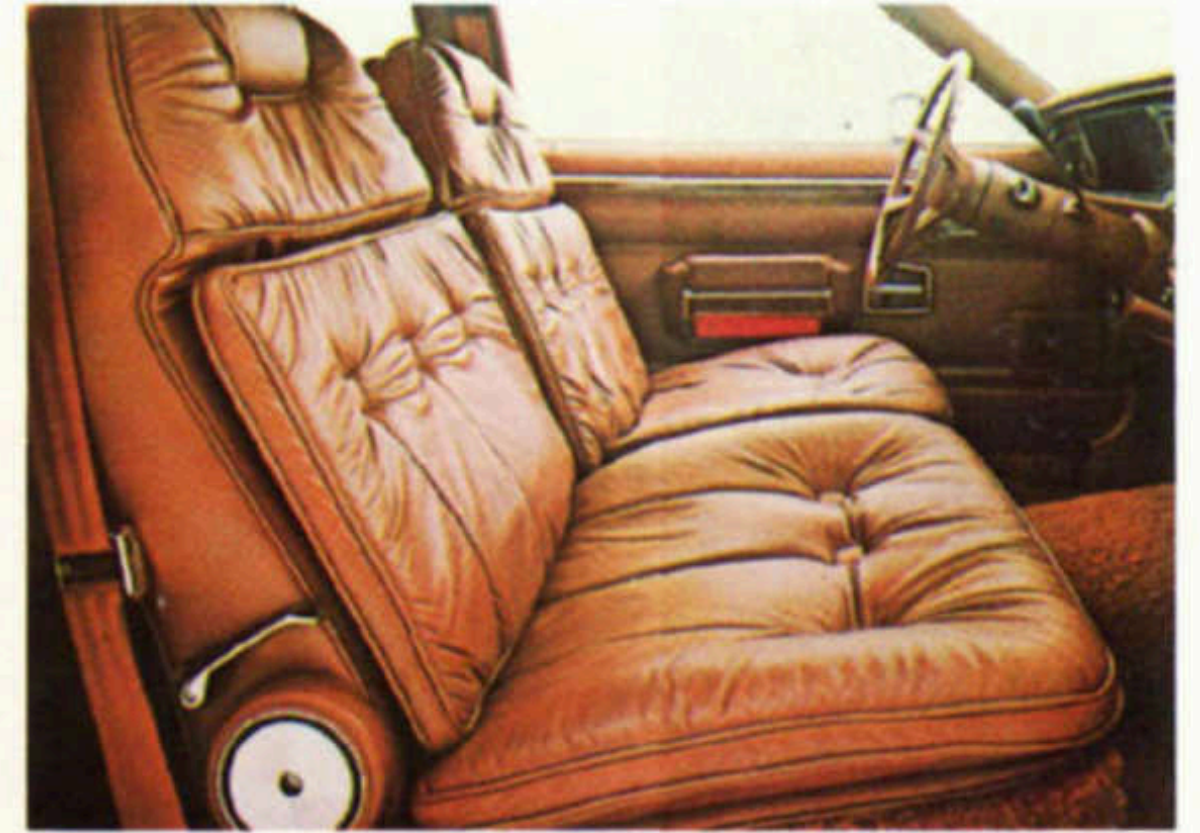
### EXTERIOR COLORS

	
Olympic White	Mist Silver, Met.
	
Classic Black	Jamaican Beige
	
Topaz Gold, Met.	Copper Brown, Met.
	
Dk. Brown, Met.	Slate Blue, Met.
	
Deep Night Blue	Oriental Red
	
Deep Maroon, Met.	Sun Yellow
	
Vintage Red, Met.	

## INTERIORS

You can select an Eagle interior designed to handle daily wear and tear. Or, you can opt for outright elegance. Select from a full range of materials: durable vinyls to attractive fabrics to genuine leather.

- A. Eagle interior in plush Castillian Sculptured fabric.
- B. Eagle Limited interior in supple genuine leather.
- C. Eagle SX/4, Kammback DL interior in Coventry Checked fabric.



## INTERIOR SEAT TRIMS

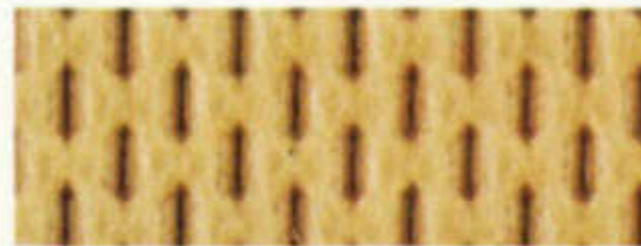
**Deluxe Grain Vinyl—std. (NA—Eagle Limited)**



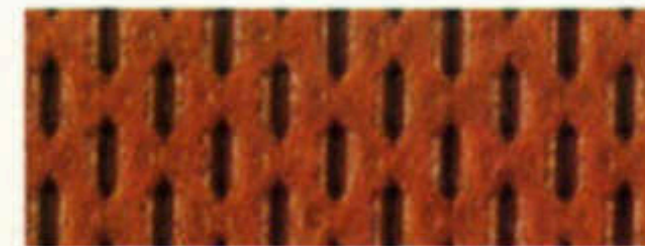
Black\*



Blue



Beige

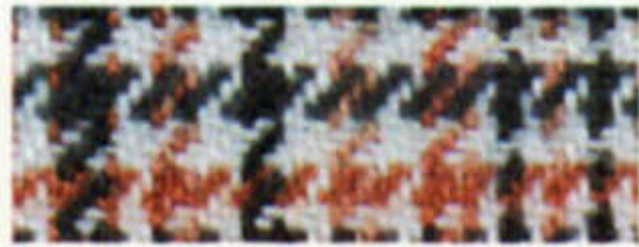


Nutmeg

**Durham Plaid Fabric—opt. (Eagle only—no extra charge)**



Black\*



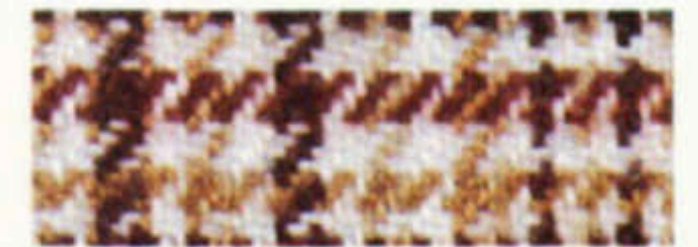
Blue



Wine

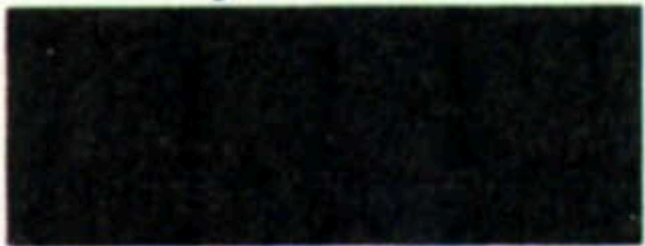


Beige



Nutmeg

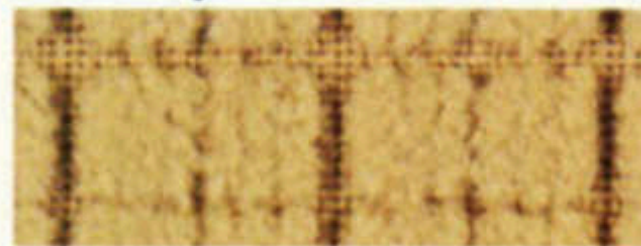
**Coventry Checked Fabric—opt. (Eagle SX/4 Kammback DL only—no extra charge)**



Black



Blue

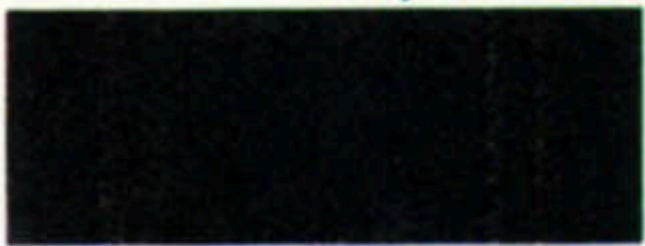


Beige



Nutmeg

**Castillian Sculptured Fabric—opt. (Eagle only—no extra charge)**



Black



Blue



Wine



Beige



Nutmeg

**Leather—std. (Eagle Limited only)**

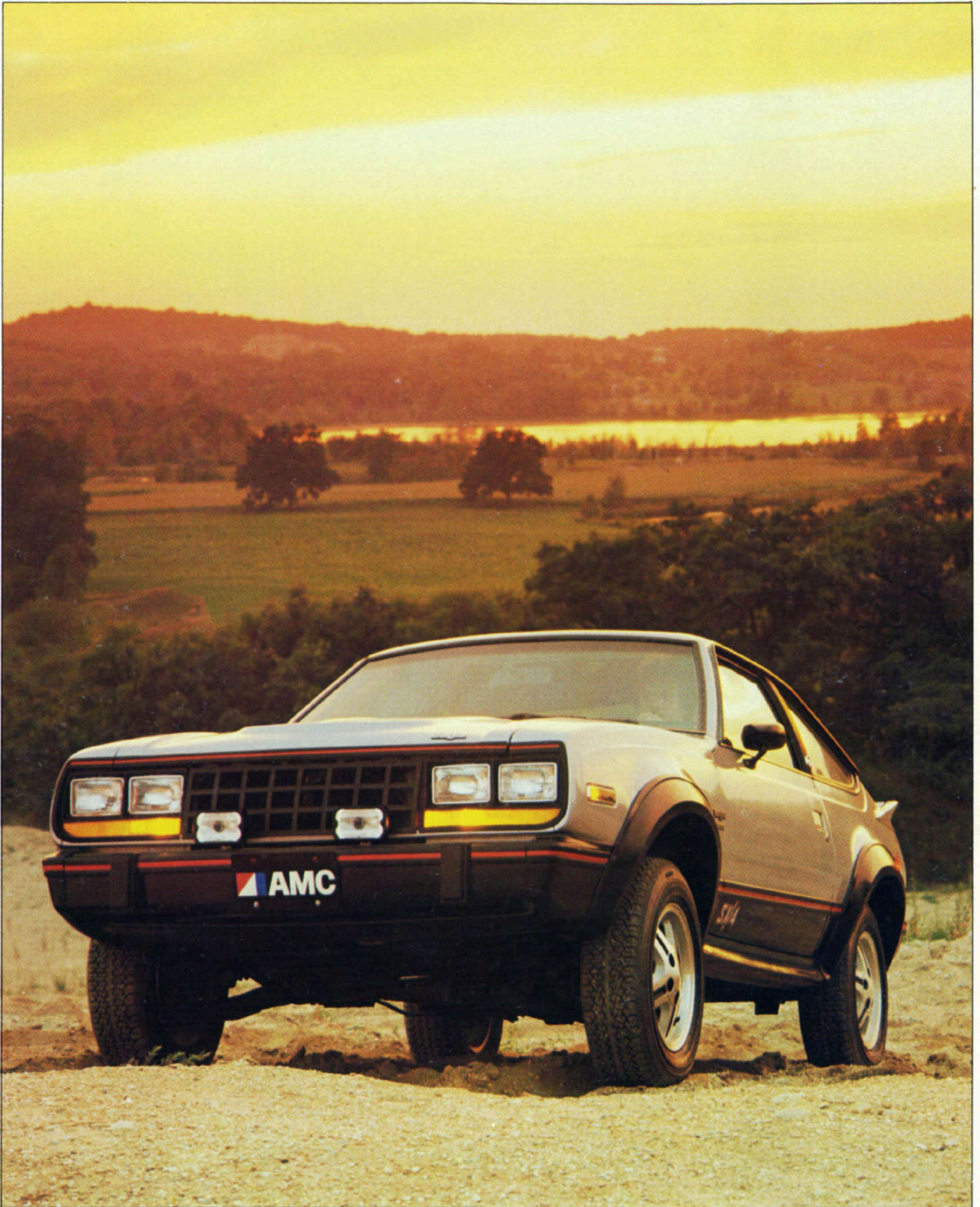


Nutmeg

\*Not available with Eagle 2 or 4 door sedans.

## EAGLE SX/4

This is the sporty car that leaves the other sports cars behind. On both performance and looks.



## ENGINE/TRANSMISSION/AXLE AVAILABILITY

Engine/ Transmission	Worldwide (Except U.S. Possessions)	U.S. Possessions Only
<b>Eagle</b>		
<b>Sedans and Wagon</b>		
2.5 Litre (151 CID) 2V 4-cyl. 4-Speed Man. - Floor	NA	3.54S
5-Speed Man. - Floor	NA	3.54S
3-Speed Auto. - Floor	NA	NA
4.2 Litre (258 CID) 2V 6-cyl. 4-Speed Man. - Floor	2.73S	2.73S
5-Speed Man. - Floor	2.73S	2.73S
3-Speed Auto. - Floor	2.73S (2.35) (3.08)	2.35S (3.08)
<b>Eagle</b>		
<b>SX/4 and Kammback</b>		
2.5 Litre (151 CID) 2V 4-cyl. 4-Speed Man. - Floor	NA	3.54S
5-Speed Man. - Floor	NA	3.54S
3-Speed Auto. - Floor	NA	3.54S
4.2 Litre (258 CID) 2V 6-cyl. 4-Speed Man. - Floor	2.73S	2.35S
5-Speed Man. - Floor	2.73S	2.35S
3-Speed Auto. - Floor	2.73S (2.35) (3.08)	2.35S

S = Standard engine/transmission/axle combination

Note: Optional 3.08 axle recommended for Eagles with 6-cyl. engine to be operated primarily in hilly terrain. Also recommended with Trailer Towing Package "A" and required Trailer Towing Package "B".

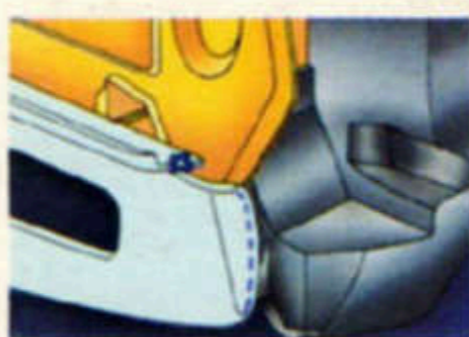
## EAGLE DIMENSIONS/CAPACITIES

	Eagle				
	4-Door	2-Door	Wagon	SX/4	Kammback
<b>Exterior (cm)</b>					
Wheelbase	278	278	278	247	247
Overall length	465	465	465	423	423
Overall width	184	184	184	185	185
Overall height	142	142	140	140	140
Front overhang	85	85	87	85	85
Front track	151	151	151	151	151
Rear track	146	146	146	146	146
<b>Interior (cm)</b>					
Front leg room	104	104	104	104	104
Front head room	97	97	97	97	97
Front shoulder room	137	137	137	137	137
Front hip room	138	138	138	138	138
Rear leg room	92	92	92	67	67
Rear head room	95	95	96	90	96
Rear shoulder room	136	135	136	135	135
Rear hip room	136	133	136	102	110
Cargo Index Volumes (m3)	.345	.345	1.61	.716	.784
Fuel Capacity (litres)					
4-cylinder	83.3	83.3	83.3	79.5	79.5
6-cylinder	83.3	83.3	83.3	79.5	79.5
Curb Weight - base (kg)	1482	1452	1490	1416	1397

Note: .108 cubic meters of hidden cargo volume on Eagle wagon.

**ONLY AMERICAN  
MOTORS HAS  
GALVANIZED  
STEEL IN 100% OF  
THE EXTERIOR  
BODY PANELS AS  
PART OF FACTORY  
RUST PROTECTION**

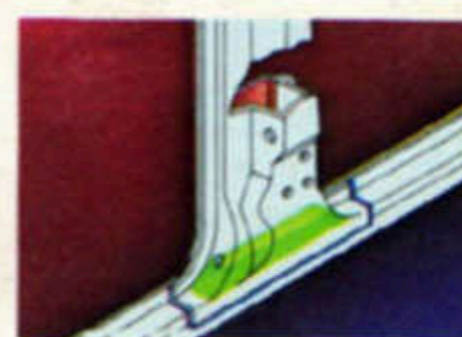
And this is how Eagles are corrosion protected.



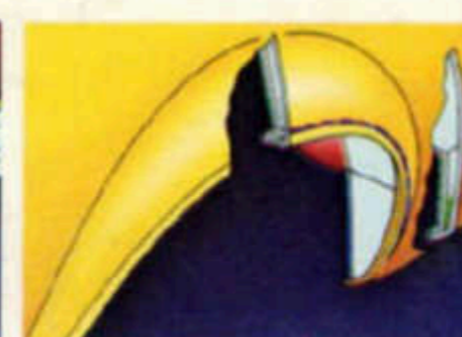
Front valence panel and fender area



Front wheel opening area

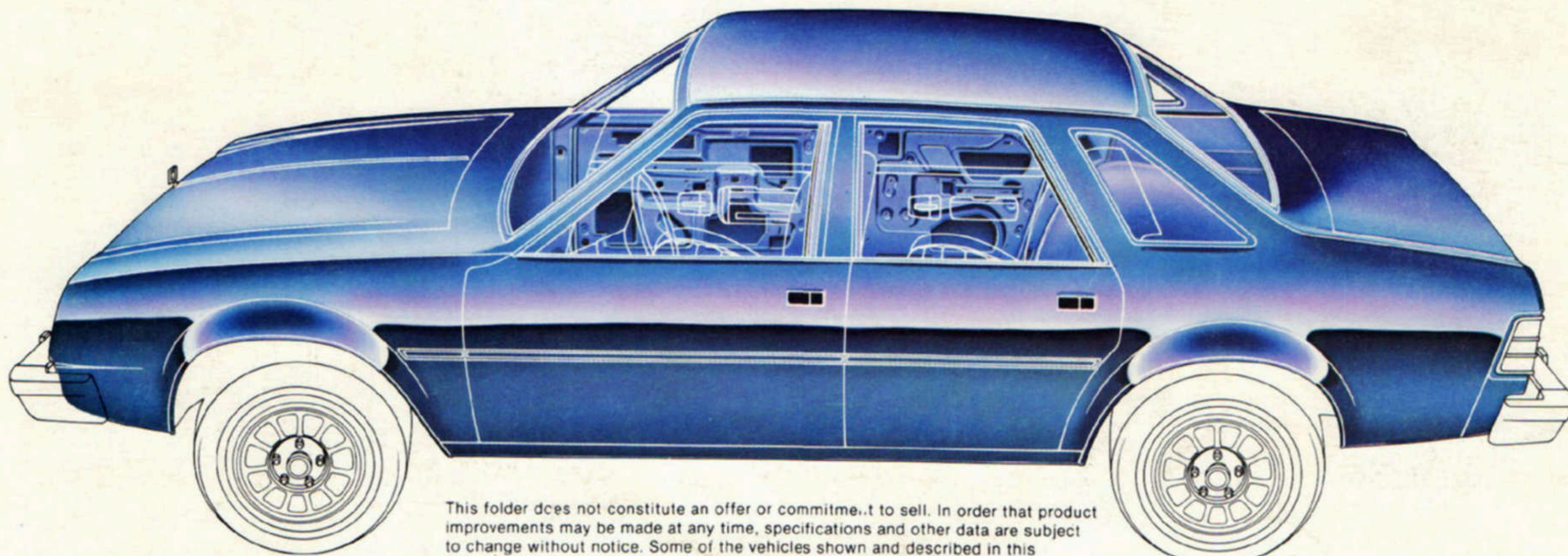


Center post and rocker panel area



Rear fender and wheel opening area

galvanized steel	primer
seam sealer	wax protection
plastic inner liner	enamel



This folder does not constitute an offer or commitment to sell. In order that product improvements may be made at any time, specifications and other data are subject to change without notice. Some of the vehicles shown and described in this brochure have optional equipment, available at extra cost. See your authorized dealer for prices and model availability for this optional equipment. In order to conform to local regulations, your vehicle may differ slightly from those shown in this brochure. Litho in USA 82-E-1E

**American Motors**