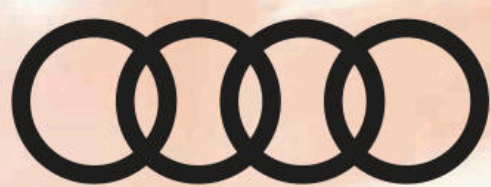


2018



A5



All-new Audi A5

The invisible intent of design.

joy
surprise
euphoria
inspiration
admiration
contentment
enjoyment
awe
delight
courage
comfort
luxury
dynamics
power
glee
attraction
confidence
intuition
empowerment
distinction
authenticity
vision
mastery
culture

What if our most important inspirations aren't seen but felt? At Audi, our intent is to create designs that celebrate the unseen. With the all-new 2018 Audi A5, we have reimagined one of our most celebrated modern designs to make it sportier, smarter and more thrilling each time you get behind the wheel. The new power dome on the hood speaks volumes of the potential of a new 2.0-liter 252 horsepower TFSI® engine, while the precise yet flowing design lines create dramatic surface tension in the sheet metal. The A5 is presented in three distinctive, refined body styles—Coupe, Cabriolet and Sportback, a rewarding choice for those who feel as much as they think.



We spent our
sleepless nights
dreaming of
new forms.



A5 S5
Coupe / Sportback / Cabriolet

2018 Audi A5 2.0T Coupe Premium Plus quattro® shown in Matador Red metallic with available equipment.



A5 Sportback



A5 Cabriolet



S5 Coupe

Body language says a lot about you.



2018 Audi A5 2.0T Cabriolet Premium Plus quattro® shown in Götland Green metallic with available equipment.

Sometimes how you say something is as important as what you say. While the performance of the all-new Audi A5 might speak for itself, every design detail expresses its dynamic capabilities. Sculpted fenders and a broad stance give the A5 an aggressive confidence. Available 19" 5-parallel-spoke design wheels and exterior enhancements of the available S line® sport package send clear signals about its quattro® all-wheel drive pedigree.



2018 Audi A5 2.0T Sportback Prestige quattro® shown in Monsoon Gray metallic with available equipment.

Courage turns a line into art.

Just as racing drivers seek the smoothest path possible through a corner to optimize velocity, the bold body lines of the all-new Audi A5 maintain a sense of speed along its entire profile. The wave-design Shoulder line intimates the skillfully applied power and tremendous performance the A5 is capable of. It's the kind of line that has the conviction to define an artistic intent.



2018 Audi A5 2.0T Coupe Premium Plus quattro® shown in Matador Red metallic with available equipment.

It's not shallow to be attracted by looks.

While we designed the exterior of the all-new Audi A5 to be attractive to everyone else, we took great care to craft an aesthetic environment for those who matter most to us: our drivers.

The dramatic shapes of the exterior are mirrored in the sweeping horizontal lines of the wing-design dash, evoking a sense of spaciousness and clarity with elegant features like integrated three-zone climate control. Along with the ergonomic interplay of the MMI® interface and yacht-style shift-by-wire gear selector,¹ the A5 affirms that sometimes beauty inside and out can come in a single package.

2018 Audi A5 2.0T Sportback Prestige quattro® shown in Monsoon Gray metallic with available equipment.



2018 Audi A5 2.0T Coupe Prestige quattro® shown with Nougat Brown leather and available equipment.

Online services are subject to change. Google Earth™ and Google Street View™ services may not be available after December 2017. ¹ Yacht-style gear selector with automatic models only. Before exiting the vehicle, always make sure the vehicle is shifted into Park, and the parking brake is set. See owner's manual for important details.



**Its unseen
allure is
experienced
through
touch.**

Attraction may start with something seen, but its true gravity lies in the emotions it stirs. You might not notice at first how the door handle opens upward in the direction it is pulled, revealing the ambient LED interior lighting package and standard safety belt presenters¹ that inspire the beginning of each drive with an invisible sense of confidence. But when you are in the grip of the standard leather seating surfaces or available twelve-way power front sport seats, you may notice the subtle assurance that comes from functional design and enduring comfort.

Performance comes
from a spark of
inspiration.

quattro® all-wheel drive

The innovation of quattro® all-wheel drive has helped Audi win races all over the world, but it's not just a performance-enhancing technology: It has also become a foul-weather friend. quattro® helps optimize traction as conditions become more challenging, which translates to a more confident driving experience. On the all-new Audi A5, standard quattro® all-wheel drive does more than help give it optimal grip—it's a part of an enduring legacy of driving performance.



A5 2.0T
252 hp/273 lb-ft

Creating thrills via inspiring driving dynamics is our purpose—our motivation defines who we are. For the all-new Audi A5, we developed 252 horsepower and 273 lb-ft of torque pumping out of a powerful turbocharged 2.0-liter TFSI® four-cylinder to help bring out the corners in your commute. The seven-speed S tronic® dual-clutch transmission recalls the marque's track lineage. Standard Audi drive select and available adaptive damping suspension help provide a nimble response for spirited driving in Dynamic mode as well as a relaxed, absorptive feel in Comfort mode to help put the driver in control of a balanced driving experience.¹

S5



2018 Audi S5 Coupe Prestige quattro® shown in Navarra Blue metallic with available equipment.

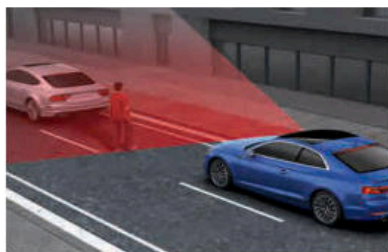
The all-new 2018 Audi S5 spins up 354 horsepower and 369 lb-ft of torque via the all-new twin-scroll turbocharged 3.0-liter TFSI® V6 engine. Striking 18" Audi Sport® wheels deliver on sleek styling, while S model interior elements set a focused performance aesthetic inside. When equipped with the available S sport package, the S5 gets even more assertive with the agility-enhancing quattro® sport rear differential and sport-tuned adaptive suspension,¹ bringing the S5 to a flash point of sport and luxury. We build cars for serious driving enthusiasts,

**that's why
the S5 can pass
even the highest
expectations.**



Our instincts for the unseen.

Who we are is determined in the microseconds that comprise our response to our changing environment. Just as these instincts give us self-assurance in our endeavors, at Audi, we are dedicated to evolving our driver assistance features to help improve your confidence on the road. Our comprehensive portfolio of available driver assistance technologies can help alert you to a variety of unexpected situations on the road.¹



Dramatization

Audi pre sense[®] city

Standard pre sense city can help detect vehicles and pedestrians in your path and initiate emergency braking in an unforeseen event.¹



Dramatization

Audi adaptive cruise control with stop & go and Traffic jam assist

Changing the way you experience traffic, this system can help maintain a set following distance at changing traffic speeds, and can even help the driver follow traffic at low speeds with guided acceleration, braking and steering.^{1,2}

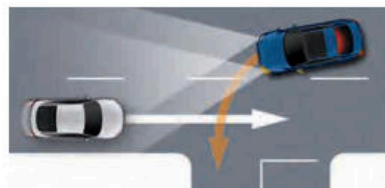


Dramatization

Audi pre sense[®] rear with Rear cross traffic assist and Vehicle exit assist

This available system uses sensors to monitor traffic behind the vehicle to help alert the driver to vehicles or cyclists approaching from behind while the vehicle doors are opening.

Rear cross traffic assist helps detect traffic behind the vehicle while backing out of a parking space and can alert the driver or engage braking in a variety of situations.¹



Dramatization

Turn assist and Collision avoidance assist

Available Turn assist can help in the event the driver attempts to cross traffic when there is a perceived hazard. If there is a potential collision, available Collision avoidance assist can help support the driver by providing steering guidance during a sharp maneuver.¹



Dramatization

For a complete list of Driver Assistance features, please see the Featured Highlights and Available Packages sections of this brochure for more details.

¹ The features discussed are not substitutes for attentive driving. Please see your owner's manual for further details and important limitations. ² Traffic jam assist function not available with manual transmission.

Ergonomics for the information age.

Designing access to relevant information and helping filter out distraction requires a soft touch and knowledge of human senses and design. The available Audi virtual cockpit helps put what you want to see in vibrant color on a 12.3-inch display. The innovative, fully digital instrument cluster offers three unique modes for viewing data: Classic mode, Infotainment mode and, on Audi S5 models, an additional Sport mode. Each mode strikes a distinct balance with the speedometer, tachometer, available navigation and other visuals to keep you inspired and informed. For a more hands-on approach, consider our available MMI® touch rotary controller with integrated touchpad and intuitive two-button function keys.¹

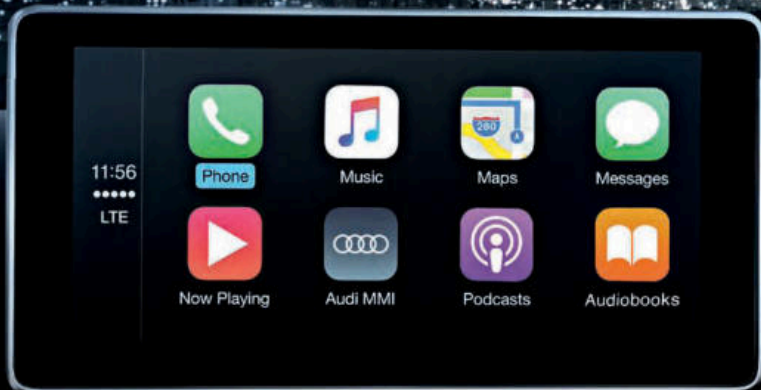


Before exiting the vehicle, always make sure the vehicle is shifted into Park, and the parking brake is set. See owner's manual for important details.



Online services are subject to change. Google Earth™ and Google Street View™ services may not be available after December 2017.
1 Always pay careful attention to the road, and do not drive while distracted. See Owner's Manual for further details and important limitations.

Any interaction can make a powerful connection.



Audi smartphone interface

Take comfort in the familiarity of your compatible mobile device when you connect it via Audi smartphone interface. When linked with your iPhone®, Apple CarPlay™ allows you to control your iPhone® through Siri® and the car's controls to access your favorite apps such as Apple Music®, Maps, Messages and more. If you have a compatible Android device, Google™ Android Auto will connect you with Google Play™ Music, Google Maps™, Google Search and more.¹

Audi smartphone interface supported by Apple CarPlay™ shown with available 8.3-inch MMI® center infotainment/navigation display.

3D sound makes our vision clear.

19 speakers on Coupe/Sportback models.
20 speakers on Cabriolet models.

Connect CARE⁵

A suite of assistance and security services to help you in emergency situations.



SOS call¹⁵

Online Roadside Assistance¹⁶

Stolen Vehicle Locator¹⁷

Audi Service Request¹⁸

Connect PRIME⁹

Enhance your experience with a robust offering of services that help you navigate and stay informed.



Google Earth™¹⁹

Google Voice Search™¹⁸

myAudi Destinations

Over-the-Air Map Data Updates

Audi Semi-Dynamic Route Guidance with INRIX XD® Traffic¹¹

Fuel Prices

Internet Radio/Music Stream

Twitter®

News Feeds

Weather

Geofencing

Speed Alert²⁰

Remote Lock/Unlock²

Parking Information²¹

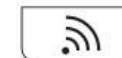
Car Finder²²

Valet Alert²³

Traffic Light Information²⁴

Connect PLUS¹⁰

Connect passenger devices with the Wi-Fi® hotspot.



Wi-Fi®

Get connected even when you're on-the-go with the power of the available next-generation Audi connect® system. Looking for interesting events in your area? Want to avoid heavy traffic? Want to keep passengers entertained with an available in-vehicle Wi-Fi® hotspot? Audi connect offers a robust portfolio of services with the means to inform, entertain and help get you where you want to go.^{5,9,10}

While you can't see sound, its effects can be transparent. Experience the feeling of your favorite artists performing live while sitting in the comfort of your front seat, thanks to the meticulously crafted, available Bang & Olufsen® sound system with 3D sound. You will experience both thrilling highs and sumptuous lows in their most lifelike form, provided by up to 20 speakers and powered by a 16-channel amplifier with an output of 755 watts. The high-quality design and location of the speakers both enhances the spaciousness of the sound and adds to the sleek interior look of the vehicle, giving sound an entirely new dimension.

1, 2, 5, 9-11, 15-24 See package page for important information regarding Audi smartphone interface, remote lock/unlock, Audi connect® CARE, Audi connect® PRIME, Audi connect® PLUS, INRIX XD® Traffic, SOS-manual emergency call, online roadside assistance, stolen vehicle locator, Audi service request, Google Earth™, speed alert, parking information, car finder, valet alert and traffic light information.



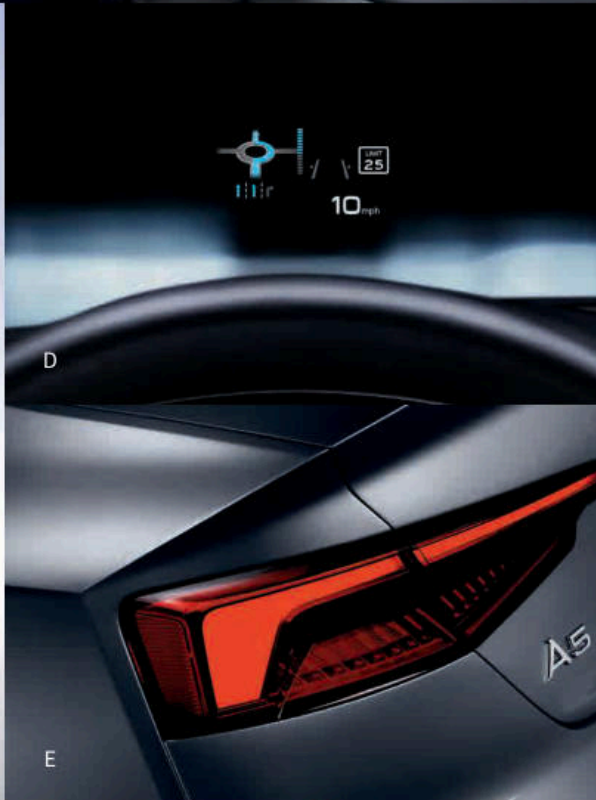
A



B



C



D

E



F



G



H

- A. Available ambient LED interior lighting plus package**
- B. Available parking system plus** | Sensors in the front and rear bumpers and a selective display can help you get in and out of tight spots.
- C. Available S line® exterior appearance** | Distinctive S line® bumpers feature aggressive lower bumper intakes and rear diffuser, which, along with side sills, give the vehicle a sleek performance look.
- D. Available head-up display** | Speed, navigation and assistance systems information projected just below the driver's line of sight.
- E. LED taillights with dynamic turn signals** | A stunning, dynamic LED array helps make your intentions clear to other drivers.
- F. Available full LED headlights**
- G. Available S line® fender badges. Part of the S line® sport package.**
- H. Available Audi adaptive cruise control** | Featuring stop & go with Traffic jam assist, this system uses radar to automatically maintain a set following distance and help drivers navigate the vagaries of traffic.^{1,2}



Learn more about the all-new Audi A5 through the Audi Library Experience.³

audilibrary.audiusa.com

1 The features discussed are not substitutes for attentive driving. Please see your owner's manual for further details and important limitations. 2 Traffic jam assist function not available with manual transmission. 3 Always pay careful attention to the road, and do not drive while distracted. Message and data rates apply.

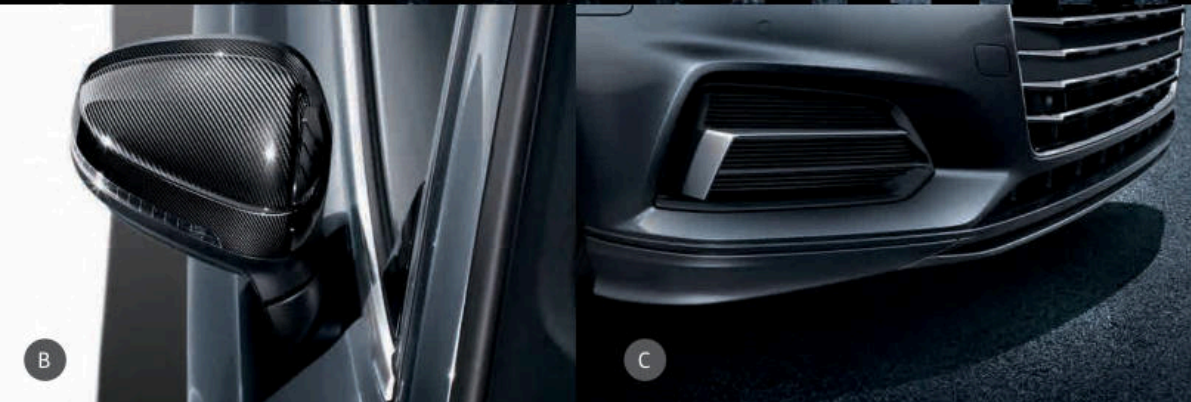
The finishing touches can help elevate a leading performance into a showstopper. Your personal flair makes an Audi truly yours, and being true to yourself never goes out of style. To help you show off your Audi pride, we offer Audi Genuine Accessories.

Attention to detail will never go unnoticed.



A. 19" 5-arm Ramus design wheel with gloss black finish

Thanks to extensive stress testing, these enduring wheels feature a weather-resistant finish with up to four layers of gloss black paint.



B

C

B. Carbon fiber side mirror¹

Distinctive exterior side mirror housings add a subtle sport styling to the A5.

C. Front spoiler with blade¹

This eye-catching lip spoiler augments the sporty character of the A5.

D. Carbon fiber rear spoiler¹

This unique spoiler holds down an aggressive performance look.





A



B



C

A. Ski & luggage cargo carrier¹

This stylish cargo carrier can hold up to 165 lbs of additional cargo. With access to your gear on either side, this carrier puts your Audi pride on top and makes storage a snap. Size: 83.9"x34.3"x15.7"

B. All-weather cargo mat

Designed to fit your A5, the raised outside edge of the cargo mat protects the cargo area from everything from groceries to muddy sports gear. Special textured material also helps control load shifting.

C. A5/S5 floor mats

The all-weather floor mats feature a deep-ribbed, channeled design to protect from spills, while high-pile carpeted floor mats feature an embroidered A5 logo and help protect your vehicle's floor from the elements. Mats are available in sets of two for front and rear.

¹ All roof-rack system attachments require the base carrier bars. All attachments sold separately. Recreational equipment, sporting equipment and luggage not included.

Audi Genuine Sport and Design Accessories

For a bolder appearance or a finishing touch, we have a solution that helps make every mile more enjoyable—and more yours.

- ▶ Stylish wheel designs
- ▶ License plate frames

Audi TravelSpace Transport Accessories

Wherever you go, help make sure what you want to carry fits with a variety of intelligent and innovative solutions.

- ▶ Bike and ski racks
- ▶ Rooftop cargo carriers
- ▶ In-vehicle cargo bags

Audi Guard Comfort and Protection Accessories

Help protect what you love. Use Audi Guard Comfort and Protection Accessories to help keep your Audi looking like new—inside and out.

- ▶ Floor mats
- ▶ First aid kit
- ▶ Cargo mats

Audi Guard Car Care Products

Your A5 deserves the very best, and this is it: the only car care line designed specifically for Audi vehicles.

- ▶ Leather care
- ▶ Detailing tools
- ▶ Winter protection

Your pride is our passion.

Waterproof cotton jacket shown

D. Audi Sport® iPhone® 6s case

Add a sporty edge to your smartphone. Audi rings logo embossed on lower right. Black.

E. quattro® Times Square Travel Bottle

Hydrate in a New York minute with the Times Square travel bottle. The sturdy, double-wall, vacuum-insulated stainless-steel construction ensures your drink remains hot for up to 8 hours and cold for up to 24 hours. 15-oz capacity. quattro® logo. Red.

F. Audi Sport® Active Jacket

Weather the wind and rain with this ultra-light Audi Sport® jacket. You can enjoy riding in comfort, thanks to the longer back design and underarm vents that will help keep you cool. For storing small items on the go, this jacket features two slip pockets and one moisture-protected zip pocket on the back. Tight fit. 100% polyester. Audi Sport® logo on right chest and Audi rings logo on left bicep. Co-branding with Maloja®. Red.



D



E



F



Rodenstock® sunglasses shown above

A5 | S5 Featured Highlights



A5 Premium Featured highlights

A5 Coupe | A5 Cabriolet | A5 Sportback



A5 Premium Plus Featured highlights

A5 Coupe | A5 Cabriolet | A5 Sportback

✦ In addition to or replaces highlighted features of A5 Premium



A5 Prestige Featured highlights

A5 Coupe | A5 Cabriolet | A5 Sportback

✦ In addition to or replaces highlighted features of A5 Premium Plus



S5 Featured highlights

S5 Coupe | S5 Cabriolet | S5 Sportback

✦ In addition to or replaces highlighted features of A5 Premium Plus

Infotainment/Technology

- > 7.0" color driver information system and MMI® center infotainment display
- > Audi smartphone interface including Apple CarPlay™ and Google™ Android Auto¹
- > Audi sound system with ten speakers
- > HD Radio™ Technology
- > Audi music interface with two USB ports for data and charging
- > BLUETOOTH® wireless technology preparation for compatible devices
- > Garage door opener (HomeLink®)

Infotainment/Technology

- > Audi connect® CARE assistance and security services⁵
- > SiriusXM® Satellite Radio with 90-day trial subscription⁶

Infotainment/Technology

- > Audi virtual cockpit (12.3" LCD fully digital instrument cluster and two visual modes: Classic and Infotainment)
- > MMI® navigation plus⁷
- > MMI® touch with handwriting-recognition technology⁸
- > 8.3" MMI® center infotainment/navigation display
- > Six-month trial subscription to Audi connect® PRIME and Audi connect® PLUS online services^{9,10}
- > INRIX XD® Traffic¹¹
- > Bang & Olufsen® sound system with 3D Sound

Engineering/Performance

- > 3.0-liter TFSI® twin-scroll turbocharged V6
- > 354 hp/369 lb-ft torque
- > Acceleration, Coupe (0-60 mph) in 4.4 seconds
- > Acceleration, Cabriolet (0-60 mph) in 4.8 seconds
- > Acceleration, Sportback (0-60 mph) in 4.5 seconds
- > Top track speed of 155 mph¹²

Driver Assistance/Innovation

- > Keyless engine start/stop²
- > Cruise control with coast, resume and accelerate features
- > Audi pre sense® basic and Audi pre sense® city³
- > Audi drive select
- > Rear view camera

Driver Assistance/Innovation

- > Audi advanced key—keyless start, stop and entry with hands-free trunk/tailgate release²
- > Audi side assist and Audi pre sense® rear³
 - with Rear cross traffic assist³
 - with Vehicle exit assist³
- > Parking system plus (front and rear acoustic sensors)³

Driver Assistance/Innovation

- > Head-up display with navigation and assistance systems information
- > Parking system plus with top view camera system³

Transmission/Suspension/Chassis

- > Eight-speed Tiptronic® automatic transmission
- > S sport suspension
- > Six-piston fixed front calipers (with S badging)
- > 13.8" ventilated front disc/13.0" ventilated rear disc brakes

Interior/Seating

- > Three-zone automatic climate control
- > Three-spoke multifunction steering wheel with shift paddles (shift paddles not available with manual transmission)
- > Auto-dimming interior rear view mirror with digital compass
- > Leather seating surfaces
- > Eight-way power front seats and four-way power lumbar adjustment for driver
- > Split folding rear seatbacks
- > Black cloth headliner
- > Ambient LED interior lighting package
- > Panoramic sunroof (Coupe and Sportback)
- > Acoustic folding roof—folds at speeds up to 31 mph (Cabriolet)
- > Trunk storage package (side nets, four cargo tie-downs and grocery hooks)

Interior/Seating

- > Driver seat memory
- > Heated front seats

Interior/Seating

- > Ambient LED interior lighting plus package
- > Leatherette covered center console and door armrests

Interior/Seating

- > Three-spoke multifunction flat-bottom sport steering wheel with shift paddles (with S badging)
- > Illuminated stainless steel door sill inlays (with S badging)
- > Leather/Alcantara® seating surfaces with diamond stitching (with S embossing)
- > Twelve-way power front S sport-contoured seats, including four-way power lumbar adjustment, pneumatic side bolsters and massage function for driver and passenger
- > Stainless steel pedal caps

Exterior

- > Singleframe® grille
- > Xenon plus headlights with LED daytime running lights
- > Automatic headlights
- > LED taillights with dynamic turn signals
- > Power-adjustable, heated exterior side mirrors
- > Aluminum trim around exterior side windows (Coupe and Sportback)
- > Aluminum trim around exterior windshield frame and acoustic folding roof belt line (Cabriolet)
- > Power tailgate (Sportback)

Exterior

- > Full LED headlights
- > Power-adjustable, auto-dimming, power-folding, heated exterior side mirrors with memory
- > Anti-theft alarm system

Exterior

- > Platinum gray Singleframe® grille
- > S model-specific front/rear fasciae and side sills
- > Aluminum-optic exterior side mirror housings
- > Body-colored trunk-mounted rear lip spoiler
- > S model quad exhaust outlets

Safety

- > Driver adaptive and front-passenger dual-stage airbags, front-passenger thorax side airbags and knee airbags (head/thorax on Cabriolet)⁴
- > Sideguard® head-curtain airbags (Coupe and Sportback)⁴
- > Active rollover protection system (Cabriolet)

A5 | S5 Available Packages and Stand-alone Options



A5 Premium Available packages

A5 Coupe | A5 Cabriolet | A5 Sportback

Navigation and Telematics package

- > Audi virtual cockpit (12.3" LCD fully digital instrument cluster and two visual modes: Classic and Infotainment)
- > MMI® navigation plus⁷
- > MMI® touch with handwriting-recognition technology⁸
- > 8.3" MMI® center infotainment/navigation display
- > Audi connect® CARE assistance and security services⁵
- > Six-month trial subscription to Audi connect® PRIME and Audi connect® PLUS online services^{9,10}
- > INRIX XD® Traffic¹¹

Convenience package

- > Anti-theft alarm system
- > Audi advanced key—keyless start, stop and entry with hands-free trunk/tailgate release²
- > Power-adjustable, auto-dimming, heated exterior side mirrors with memory
- > Driver seat memory
- > SiriusXM® Satellite Radio with 90-day trial subscription⁶

S line® sport package (Coupe and Sportback)

- > 18" 5-arm-star design wheels
- > 245/40 R18 93H all-season tires¹³
- > Sport suspension
- > S line® exterior appearance
- > S line® fender badges
- > Front sport seats with four-way power lumbar adjustment for driver and passenger
- > Illuminated stainless steel door sill inlays (with S line® badging)

A5 Premium Stand-alone options

- > Heated front seats
- > High-gloss Dark Brown Walnut Wood inlays
- > Natural Gray Oak Wood inlays
- > Rear thorax side airbags (Sportback)⁴
- > 245/40 R18 97Y summer performance tires¹³



A5 Premium Plus Available packages

A5 Coupe | A5 Cabriolet | A5 Sportback

+ In addition to or replaces packages and options of A5 Premium

Navigation package

- > Audi virtual cockpit (12.3" LCD fully digital instrument cluster and two visual modes: Classic and Infotainment)
- > MMI® navigation plus⁷
- > MMI® touch with handwriting-recognition technology⁸
- > 8.3" MMI® center infotainment/navigation display
- > Six-month trial subscription to Audi connect® PRIME and Audi connect® PLUS online services^{9,10}
- > INRIX XD® Traffic¹¹

Cold weather package (Sportback)

- > Heated steering wheel
- > Heated rear seats

Warm weather package (Coupe and Sportback)

- > Ventilated front sport seats with four-way power lumbar adjustment for driver and passenger

Luxury package (Cabriolet)

- > Heated steering wheel
- > Ventilated front sport seats with four-way power lumbar adjustment for driver and passenger
- > Neck-level heating system

19" Design line wheel package

- > 19" multi-spoke design wheels with contrasting gray/polished finish
- > 255/35 R19 96Y XL summer performance tires¹³
- > Sport suspension

19" S line® wheel package (Coupe and Sportback)

- > 19" 5-parallel-spoke design wheels
- > 255/35 R19 96Y XL summer performance tires¹³

Sport plus package (Manual transmission only)

- > 18" Audi Sport® 5-double-spoke star design wheels
- > 245/40 R18 97Y summer performance tires¹³
- > Sport damping suspension
- > Dynamic steering
- > Three-spoke multifunction flat-bottom sport steering wheel (with S line® badge)
- > Front sport seats with four-way power lumbar adjustment for driver and passenger
- > S line® leather/Alcantara® seating surfaces (with S embossing)
- > Leatherette covered center console and door armrests
- > Matte Aluminum inlays
- > Stainless steel pedal caps

A5 Premium Plus Stand-alone options

- > Ventilated front sport seats (Coupe and Sportback)
- > Heated steering wheel (Coupe)
- > Bang & Olufsen® sound system with 3D sound



A5 Prestige Available packages

A5 Coupe | A5 Cabriolet | A5 Sportback

+ In addition to or replaces packages and options of A5 Premium Plus

Driver Assistance package

- > Audi adaptive cruise control with stop & go - with Traffic jam assist³ (Traffic jam assist function not available with manual transmission)
- > Turn assist³
- > Collision avoidance assist³
- > Traffic sign recognition³
- > Audi active lane assist³
- > High-beam assistant

A5 Prestige Stand-alone options

- > Adaptive damping suspension



S5 Available packages

S5 Coupe | S5 Cabriolet | S5 Sportback

+ In addition to or replaces packages and options of A5 Premium Plus

Cold weather package (Sportback)

- > Heated steering wheel (deletes flat-bottom steering wheel)
- > Heated rear seats

Warm weather package (Coupe and Sportback)

- > Ventilated front sport seats with four-way power lumbar adjustment, pneumatic side bolsters and massage function for driver and passenger (deletes diamond stitching)
- > Leatherette covered center console and door armrests

Luxury package (Cabriolet)

- > Heated steering wheel
- > Milano leather seats
- > Ventilated front sport seats with four-way power lumbar adjustment, pneumatic side bolsters and massage function for driver and passenger (deletes diamond stitching)
- > Neck-level heating system

Navigation plus package (Available on Premium Plus, standard on Prestige)

- > Audi virtual cockpit (12.3" LCD fully digital instrument cluster and three visual modes: Classic, Infotainment and Sport)
- > MMI® navigation plus with voice control system⁷
- > MMI® touch with handwriting-recognition technology⁸
- > 8.3" MMI® center infotainment/navigation display
- > Six-month trial subscription to Audi connect® PRIME and Audi connect® PLUS online services^{9,10}
- > INRIX XD® Traffic¹¹

S sport package

- > quattro® sport rear differential
- > Sport adaptive damping suspension
- > Red brake calipers (front and rear)

Fine Nappa Leather package

- > Fine Nappa leather seats with contrast diamond stitching
- > Leatherette covered center console and door armrests

19" Wheel package

- > 19" 5-spoke Cavo design wheels with contrasting gray/polished finish
- > 255/35 R19 96Y XL summer performance tires¹³

S5 Stand-alone options

- > Heated steering wheel (Coupe, deletes flat-bottom steering wheel)
- > Bang & Olufsen® sound system with 3D sound (Optional on Premium Plus, standard on Prestige)
- > Dynamic steering
- > Carbon Atlas inlays
- > Rear thorax side airbags (Sportback)⁴
- > 245/40 R18 93H all-season tires¹³

1 Always pay careful attention to the road, and do not drive while distracted. Not all features available on all operating systems. Standard text and data usage rates apply. These features require compatible device, operating system, and mobile apps. See mobile device and app providers for terms and privacy. "Android Auto" is a trademark of Google Inc. "Apple CarPlay" is a trademark of Apple Inc. 2 See owner's manual for further details and important warnings about the keyless ignition feature. Do not leave vehicle unattended with the engine running, particularly in enclosed spaces. 3 The features discussed are not substitutes for attentive driving. Please see your owner's manual for further details and important limitations. 4 Airbags are supplemental restraints only and will not deploy in all crash circumstances. Always use safety belts and seat children only in the rear, using restraint systems appropriate for their size and age. 5 Always pay careful attention to the road, and do not drive while distracted. Connect CARE services are provided with the support of authorized affiliated and third party service providers. Available on select models. Connect CARE services are activated prior to purchase or lease and do not require registration or paid subscription. Connect CARE services require vehicle cellular connectivity and availability of vehicle GPS signal; certain services collect location information. See Terms of Service for information about how to disable. Connect CARE services are subject to technologies remaining commercially available, and such availability is not guaranteed. See Terms of Service, Privacy Policy, and other details at www.audiusa.com/audiconnect-privacy and www.audiusa.com/audiconnect-terms. Connect CARE services should only be used when it is safe and appropriate. 6 SiriusXM® Satellite Radio and SiriusXM® Traffic subscriptions are sold separately or as a package after trial period and are continuous until you call SiriusXM® to cancel. See Customer Agreement for complete terms and more information at www.siriusxm.com. SiriusXM® Traffic service available in select markets. SiriusXM® U.S. Satellite Service available only to those in the 48 contiguous

U.S.A., D.C. and Puerto Rico (with coverage limitations). 7 MMI® navigation plus depends on signals from the worldwide Global Positioning Satellite network. The vehicle's electrical system and existing wireless and satellite technologies must be available and operating properly for the system to function. The system is designed to provide you with suggested routes in locating addresses, destinations and other points of interest. Changes in street names, construction zones, traffic flow, points of interest and other road system changes are beyond the control of Audi of America, Inc. Complete detailed mapping of lanes, roads, streets, toll roads, highways, etc., is not possible, therefore you may encounter discrepancies between the mapping and your actual location. Please rely on your individual judgment in determining whether or not to follow a suggested MMI® navigation plus route. Mapping updates are available at no charge for the first five map updates and are subsequently available on a subscription basis. 8 Always pay careful attention to the road, and do not drive while distracted. See owner's manual for further details and important limitations. 9 Always pay careful attention to the road, and do not drive while distracted. Audi connect® should be used only when it is safe and appropriate. Connect PRIME services are optional, require an active subscription with separate terms, and require vehicle mobile data connectivity. Some services collect location information and require a vehicle GPS signal; see Terms of Service for information about how to disable. Online services are subject to change; Google Earth™ and Google Street View™ services may not be available after December 2017. See Terms of Service, Privacy Policy, and other details at www.audiusa.com/audiconnect. 10 Always pay careful attention to the road, and do not drive while distracted. The Wi-Fi® hotspot feature is intended for passenger use only. Connect PLUS features and technologies are optional, may require an additional subscription with separate terms and conditions, and should be used only when it is safe and appropriate. See materials provided by wireless carrier for terms, privacy, data security details. Returning devices connect automatically and use plan data unless hotspot is removed from device settings. 11 INRIX XD® Traffic is available on all Model Year 18+ A3, A4, A5, A6, A7, TT, R8, Q5 and Q7 vehicles and is included with an Audi connect® subscription. Other models (A8 and Q3) include SiriusXM® Traffic for four years with the purchase of the vehicle. 12 Top track speed is electronically limited in the U.S. Always obey all speed and traffic laws. 13 These tires may ride less comfortably, make more noise, and wear more quickly than other choices. To avoid tire, rim, or vehicle damage, it is important that inflation pressure is regularly checked and maintained at optimum levels. High-performance tires are designed for optimum performance and handling in warm climates and are not suitable for cold, snowy, or icy weather conditions. When driving during cold, snowy, or icy weather conditions, ensure that your vehicle is equipped with appropriate all-season or winter weather tires. Tires are supplied and warranted by their manufacturer. 15 Manual Emergency Call is enabled prior to purchase or lease and does not require registration or a subscription. 16 Roadside Assistance provided by an authorized third party service provider. 17 For use by law enforcement authorities only. See Terms of Service for details. 18 Always consult owner's manual for maintenance guidelines. 19 Online services are subject to change. Google Earth™ and Google Street View™ services may not be available after December 2017. 20 Always obey speed and traffic laws. The alerts should only be viewed when it is safe and appropriate. Always pay careful attention to the road, and do not drive while distracted. Message and data rates apply. 21 Requires parking facility participation. Not available in all areas. 22 Requires Audi MMI connect app. Smartphone message and data rates apply. Do not use feature to locate stolen vehicle. 23 The alerts should only be viewed when it is safe and appropriate. Always pay careful attention to the road, and do not drive while distracted. Message and data rates apply. 24 This feature is not a substitute for attentive driving. Always pay careful attention to the road and obey all speed and traffic laws. Requires compatible traffic infrastructure which is not available in all areas. Not available on vehicles built prior to June 1, 2016. See owner's manual for further details and important limitations.

Technical Specifications

Performance

	A5	S5
Engine type	Four-cylinder	Six-cylinder
Engine block/Cylinder head	Cast-iron/Aluminum-alloy	Aluminum-alloy
Displacement (cc)/Bore and stroke (mm)	1,984/82.5 x 92.8	2,995/84.5 x 89.0
Horsepower (@ rpm)	252 @ 5,000–6,000	354 @ 5,400–6,400
Torque (lb-ft @ rpm)	273 @ 1,600–4,500	369 @ 1,370–4,500
Compression ratio	9.6:1	11.2:1
Valvetrain	16-valve DOHC with Audi valvelift system	24-valve DOHC with Audi valvelift system
Induction/Fuel injection	Turbocharged/TFSI®	Turbocharged/TFSI®
Start-stop engine system ¹	■	■
Acceleration with automatic, Coupe/Cabriolet/Sportback (0–60 mph)	5.6/6.0/5.7 seconds	4.4/4.8/4.5 seconds
Acceleration with manual, Coupe (0–60 mph)	5.7 seconds	—
Top track speed	130 mph ²	155 mph ²

Transmission | Drivetrain

Seven-speed S tronic® dual-clutch automatic transmission and quattro® all-wheel drive	■	—
Six-speed manual transmission and quattro® all-wheel drive with ultra® technology	■	—
Eight-speed Tiptronic® automatic transmission and quattro® all-wheel drive	—	■
quattro® sport rear differential	—	□

Body | Suspension | Chassis

Five-link front and rear suspension	■	■
Sport suspension	□	□
Adaptive damping suspension	□	□ (Sport-tuned)
Ventilated front disc/Ventilated rear disc brakes (in)	13.0/13.0	13.0/13.0
Electromechanical power steering system	■	■
Dynamic steering	—	□
Steering ratio	15.9:1	15.9:1
Turning circle, curb-to-curb (ft)	37.7	37.7

Exterior measurements

	A5	S5
Wheelbase, Coupe/Cabriolet/Sportback (in)	108.8/108.9/111.2	108.8/108.9/111.2
Length, Coupe/Cabriolet/Sportback (in)	184.0/184.0/186.3	184.7/184.7/187.1
Height, Coupe/Cabriolet/Sportback (in)	54.0/54.4/54.6	53.9/54.4/54.5
Overall width with mirrors, Coupe/Cabriolet/Sportback (in)	79.9/79.9/79.9	79.9/79.9/79.9
Track, front/rear (in)	62.5/61.7	62.5/61.7
Curb weight with automatic, Coupe/Cabriolet/Sportback (lb)	3,605/3,990/3,704	3,836/4,211/3,924
Curb weight with manual, Coupe (lb)	3,549	—
Drag coefficient, Coupe/Cabriolet/Sportback (Cw)	0.29/0.30/0.29	0.29/0.30/0.29

Interior measurements

Head room front, Coupe/Cabriolet/Sportback (in)	39.0/40.0/39.4	39.0/40.0/39.4
Head room rear, Coupe/Cabriolet/Sportback (in)	36.1/36.3/37.0	36.1/36.3/37.0
Leg room front, Coupe/Cabriolet/Sportback (in)	41.3/41.3/41.3	41.3/41.3/41.3
Leg room rear, Coupe/Cabriolet/Sportback (in)	32.7/33.1/35.1	32.7/33.1/35.1
Shoulder room front, Coupe/Cabriolet/Sportback (in)	55.3/55.3/55.7	55.3/55.3/55.7
Shoulder room rear, Coupe/Cabriolet/Sportback (in)	50.7/46.9/54.5	50.7/46.9/54.5
Cargo volume, Coupe/Cabriolet/Sportback (cu ft)	11.6/9.3/21.8	11.6/9.3/21.8
Seating capacity, Coupe/Cabriolet/Sportback	4/4/5	4/4/5

EPA mileage estimates | Capacities

Automatic transmission and quattro® all-wheel drive (city/highway/combined) ¹	NA	NA
Manual transmission and quattro® all-wheel drive (city/highway/combined) ¹	NA	—
Engine oil (qt)	5.5	7.9
Fuel (gal)	15.3 ³	15.3 ³
Recommended fuel	Premium	Premium

■ Standard □ Available — Not applicable NA Information not available at time of printing

¹ 2017 EPA estimates not available at time of printing. See www.fueleconomy.gov for details. Your mileage will vary and depends on several factors, including your driving habits and vehicle condition. ² Top track speed is electronically limited in the U.S. Always obey all speed and traffic laws. ³ Never drive until the tank is completely empty. The irregular supply of fuel that results from that can cause engine misfires. Uncombusted fuel will then enter the exhaust system. This can cause overheating and damage to the catalytic converter.

Wheels

18" 10-spoke-dynamic design wheels



A5 standard

18" 5-arm-star design wheels



A5 available on Premium, Premium Plus, Prestige (S line® models only)

19" multi-spoke design wheels with gray/polished finish



A5 available on Premium Plus, Prestige (not available with S line® models)

19" 5-parallel-spoke design wheels



A5 available on Premium Plus, Prestige (S line® models only)

Audi Sport® 18" 5 double-spoke-star design wheels



A5 Coupe available with Sport plus package, S5 standard

19" 5-spoke Cavo design wheels with gray/polished finish



S5 available

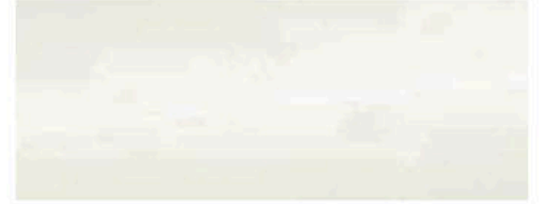
Exterior Colors

Brilliant Black



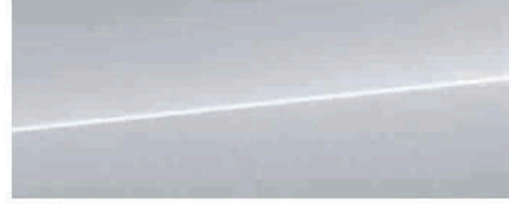
A5, S5

Ibis White



A5, S5

Florett Silver metallic



A5, S5

Glacier White metallic



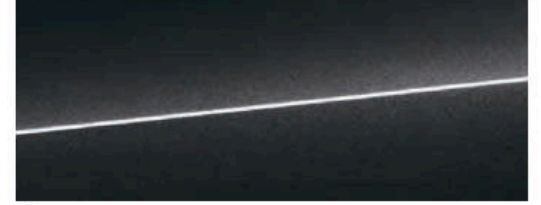
A5, S5

Gotland Green metallic



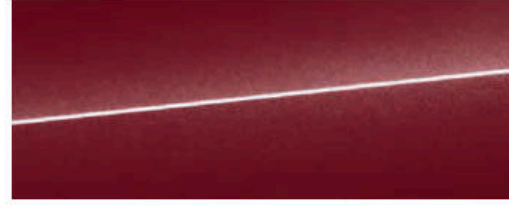
A5, S5

Manhattan Gray metallic



A5

Matador Red metallic



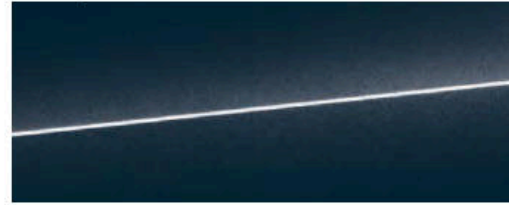
A5

Monsoon Gray metallic



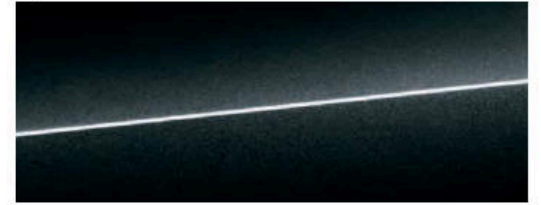
A5

Moonlight Blue metallic



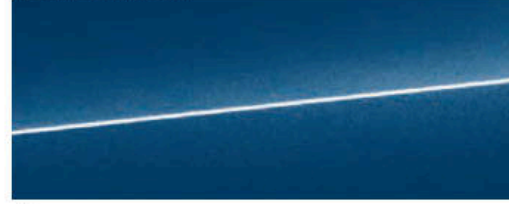
A5

Mythos Black metallic



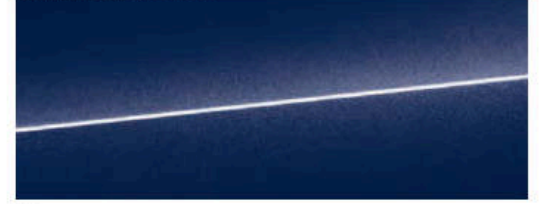
A5, S5

Scuba Blue metallic



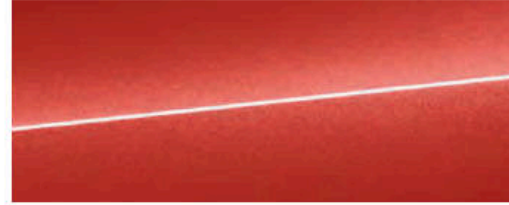
A5

Navarra Blue metallic



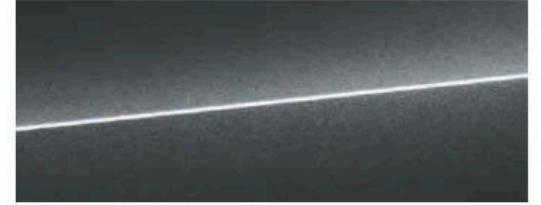
S5

Tango Red metallic



S5

Daytona Gray pearl

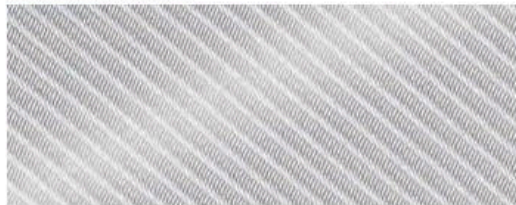


A5 Coupe with Sport plus package, S5

Interior Inlays

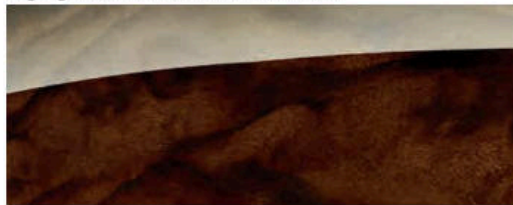


Aluminum Trimaran



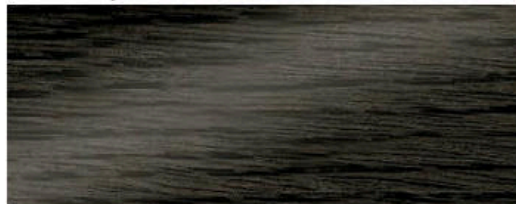
A5 standard

High-gloss Dark Brown Walnut Wood



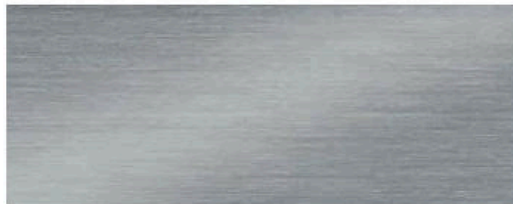
A5 optional

Natural Gray Oak Wood



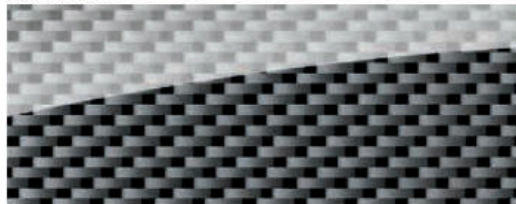
A5 optional

Matte Brushed Aluminum



A5 Coupe available with Sport plus package, S5 standard

Carbon Atlas



S5 optional

Interior Colors

Black leather



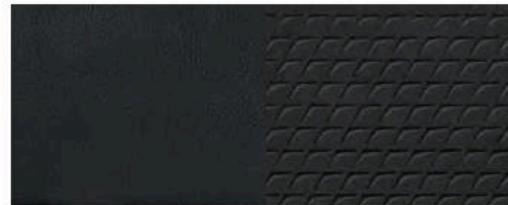
A5

Black Perforated leather



A5 available with ventilated front seats, S5 available with ventilated front seats

S line® Black leather/Black Alcantara®



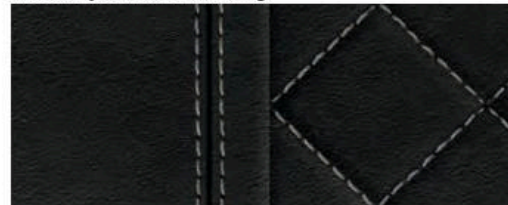
A5 Coupe available with Sport plus package

Black leather/Black Alcantara® with Rock Gray diamond stitching



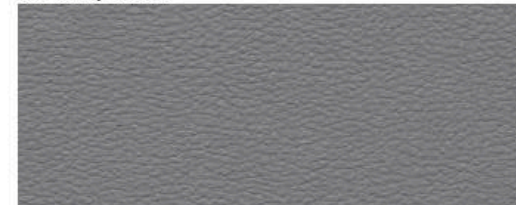
S5, not available on Cabriolet

Black Fine Nappa leather with Rock Gray diamond stitching



S5 available

Rock Gray leather



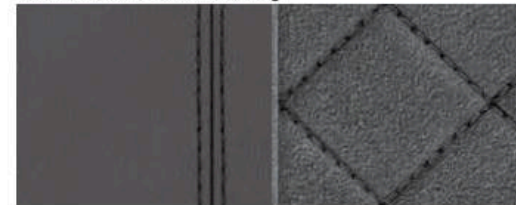
A5

Rock Gray Perforated leather



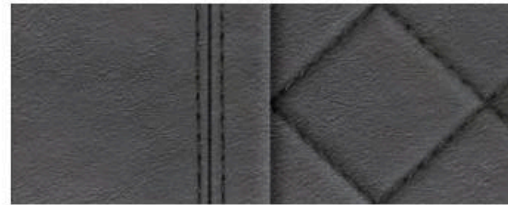
A5 available with ventilated front seats

Rotor Gray leather/Rotor Gray Alcantara® with Anthracite diamond stitching



S5, not available on Cabriolet

Rotor Gray Fine Nappa leather with Anthracite diamond stitching



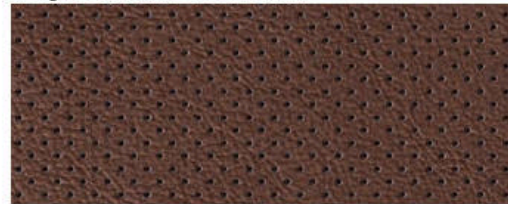
S5 available

Nougat Brown leather



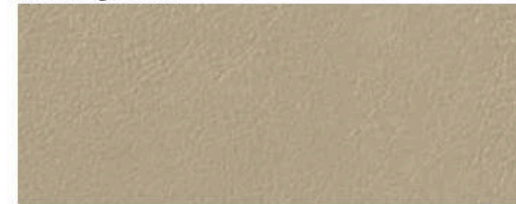
A5

Nougat Brown Perforated leather



A5 available with ventilated front seats

Atlas Beige leather



A5

Magma Red Fine Nappa leather with Granite Gray diamond stitching



S5 available

A5
2018

Audi of America
Audiusa.com
Facebook.com/Audi

Note: A word about this brochure. Audi of America, Inc., believes the specifications in this brochure to be correct at the time of printing. However, specifications, standard equipment, options, fabrics, and colors are subject to change without notice. Some equipment may be unavailable when your vehicle is built. Please ask your dealer for advice concerning current availability of standard and optional equipment, and your dealer will verify that your vehicle will include the equipment you ordered. Vehicles in this brochure are shown with optional equipment. See your dealer for complete details on the Audi New Vehicle Limited Warranty, twelve-year limited warranty against corrosion perforation, and Audi 24/7 Roadside Assistance. (Roadside assistance coverage provided by Road America in the U.S. Certain conditions apply; see your dealer for details.) Tires supplied by various manufacturers. "Audi," all model names, "Audi connect," "Audi pre sense," "Audi Sport," "MMI," "quattro," "S line," "S tronic," "Sideguard," "Singleframe," "TFSI," "ultra" and the four rings logo are registered trademarks of AUDI AG. "Apple," "Apple Music," "iPhone" and "Siri" are registered trademarks of Apple Inc. "Apple CarPlay" is a trademark of Apple Inc. "Bang & Olufsen" is a registered trademark of Bang & Olufsen. The BLUETOOTH word mark and logos are owned by the Bluetooth SIG, Inc., and any use of such marks by AUDI AG is under license. "Google," "Google Earth," "Google Maps," "Google Play," "Google Street View" and "Google Voice Search" are trademarks of Google Inc. © 2017 Google Inc. All rights reserved. "HD Radio" and the HD Radio logo are proprietary trademarks of iBiquity Digital Corporation. "HomeLink" is a registered trademark of Gentex Corporation. "INRIX XD" is a registered trademark of INRIX, Inc. "Rodenstock" is a registered trademark of Rodenstock GmbH LLC. "SiriusXM" and all related marks and logos are trademarks of Sirius XM Radio Inc. and its subsidiaries. "Tiptronic" is a registered trademark of Dr. Ing h.c. F. Porsche AG. "Twitter" is a registered trademark of Twitter, Inc. "Wi-Fi" is a registered trademark of the Wi-Fi Alliance. All other trademarks are the property of their respective owners. Some European models shown. Some features may not be available at time of order.