

Audi

2017



Audi

A6



The freedom of self-assurance.

A6	S6
2.0T	4.0T
3.0T	

There is a distinct feeling of independence found behind the wheel of the Audi A6. With the seemingly relentless grip of available quattro® all-wheel drive, along with new standard S line® exterior and the meticulous craftsmanship of the interior, the A6 solidifies its reputation as a true enthusiast's car. Building on our years of racing success, which we combine with the kind of innovations that create a singular vehicle of brains and brawn.





2017 Audi A6 3.0T Prestige shown in Glacier White metallic with available equipment.



2017 Audi S6 Prestige shown in Daytona Gray pearl with available equipment.



Some lines are better drawn than written.

2017 Audi A6 Prestige shown in Daytona Gray pearl with available equipment.

Sometimes you have to show instead of tell. That's why we sculpted every line in the Audi A6 to define the signature of our design. Take, for example, the Shoulder line, which bisects the body profile, while the Roof line and the Dynamic line work together to enhance the sporty character of the new standard S line® exterior. LED daytime running lights and taillights signal the world with compelling design, drawing a beautifully illuminated composition.



2017 Audi A6 3.0T Prestige shown in Oolong Gray metallic with available equipment.

Give peace of mind a chance.

We understand that you can't control everything you experience on the road. That's why the Audi A6 was engineered with eight standard airbags¹ and advanced Electronic Stability Control (ESC) with a secondary collision brake assist feature. The A6 offers lightweight technology-enhanced aluminum hybrid construction that provides strength, resilience and crumple zones that help mitigate potential injuries.



// 2016 IIHS Top Safety Pick+

The 2017 Audi A6, when equipped with optional Driver Assistance package, has been awarded a 2016 IIHS Top Safety Pick +.

2017 Audi A6 3.0T competition shown in Florett Silver metallic with available equipment.

1. Airbags are supplemental restraints only and will not deploy under all crash circumstances. Always use safety belts and seat children only in the rear, using restraint systems appropriate for their size and age. 2. 2016 IIHS "Top Safety Pick+" based on good ratings in the moderate overlap front, side, roof strength, head restraint tests; no less than an acceptable rating in the small overlap front tests; and no less than an advanced rating for front crash prevention. For details, visit www.iihs.org.



Let us take you into our confidence.

While driving an Audi certainly shows everyone else your confidence as a driving enthusiast, we saved some of our best looks for the driver. So take a moment to indulge in the wraparound curve of the Audi A6 dashboard. See how it integrates intuitively with the overall driver-centric layout. Discover a new level of distinctive design, from the available MMI® navigation plus,¹ with its eight-inch display deploying out of and retracting into the dashboard, to the exquisitely crafted seats covered in available Valcona leather. Then sit back and admire the finely crafted inlays displayed before you. Now imagine that you just shifted into Drive. This is what it's like to confidently rule the road.



2017 Audi A6 3.0T Prestige shown with Flint Gray leather and available equipment.



2017 Audi A6 3.0T Prestige shown with available Atlas Beige Valcona leather and optional equipment.

¹ MMI® navigation plus depends on signals from the worldwide Global Positioning Satellite network. The vehicle's electrical system and existing wireless and satellite technologies must be available and operating properly for the system to function. The system is designed to provide you with suggested routes in locating addresses, destinations and other points of interest. Changes in street names, construction zones, traffic flow, points of interest and other road system changes are beyond the control of Audi of America. The complete detailed mapping of lanes, roads, streets, toll roads, highways, etc., is not possible, therefore you may encounter discrepancies between the mapping and your actual location. Please rely on your individual judgment in determining whether or not to follow a suggested MMI® navigation plus route. Mapping updates are available at no charge for the first five map updates and are subsequently available on a subscription basis.

True luxury puts
everything in
its place.

Step into the Audi A6, and you will understand immediately that the best design is almost imperceptible. With a choice of luxurious options, a three-spoke heated steering wheel as well as available ventilated front seats, heated rear seats and four-zone climate control, you can create a cabin environment that expresses your own personal style. It's a singular touch you'll notice in the beauty of the fit and finish, the settings you incorporate within Audi drive select, or the seemingly customized contour of the available 18-way power front seats. It's luxury suited by, and to, you.



Precision driving for the driven.



// Engine

2.0-liter TFSI® turbocharged four-cylinder engine.

252 hp / 273 lb-ft.

// Drivetrain

Seven-speed S tronic® dual-clutch automatic transmission with front-wheel drive or available eight-speed Tiptronic® automatic transmission with quattro® all-wheel drive.

// Performance

Top track speed of 130 mph.¹

0-60 mph in 6.7 sec with S tronic® transmission or 5.8 sec with available Tiptronic® transmission.

3.0-liter TFSI® supercharged V6 engine.

333 hp / 325 lb-ft.
340 hp / 325 lb-ft.
(3.0T competition).

Eight-speed Tiptronic® automatic transmission with quattro® all-wheel drive.

Available sport differential (3.0T competition).

Top track speed of 130 mph.¹

0-60 mph in 5.1 sec.

Decades of engineering wisdom make the performance of the Audi A6 among the most powerful and precise vehicles we have ever produced. With your choice of the available supercharged TFSI® V6 or the spirited TFSI turbocharged four cylinder, and a selection between the seven-speed S tronic® dual-clutch or eight-speed Tiptronic® automatic transmission, you get dynamic Audi performance, no matter what you decide. And we engineered front-wheel drive and quattro® all-wheel drive variants to help give you the control that is important to channeling the performance of this powerful vehicle.²

2017 Audi A6 3.0T Prestige shown in Oolong Gray metallic with available equipment.

¹ Top track speed is electronically limited in the U.S. Always obey all speed and traffic laws. ² Always obey all speed and traffic laws.

The roar of an engine can spark your silent thrill.

With just one look at the Audi S6, you know that this vehicle was built for the avid driver. We integrated the trunk-mounted rear lip spoiler into the edge of the decklid to not only provide an exclamation point to a stunning design but also to provide downforce in spirited driving situations.¹ And with aluminum-optic touches, quad exhaust outlets and an available sport exhaust system that looks and sounds the part, the drivers you pass on the highway will know exactly which car just left them in its rear view mirror.



The Audi S6 was built with muscle and finesse in mind. Take, for instance, the pulse-quickenning 4.0-liter TFSI[®] engine with cylinder on demand[™] engine efficiency system,² which allows you to access just the amount of power you need. The Audi adaptive air suspension offers riding comfort and dynamic handling that includes speed-dependent lowering of the body, for directional stability. This is a machine that hears the call of the wild and tames the beast that lies within.

// Engine

4.0-liter TFSI[®]
turbocharged
V8 engine.

450 hp / 406 lb-ft.

// Drivetrain

Seven speed S tronic[®]
dual-clutch automatic
transmission with
quattro[®] all-wheel drive.

Available dynamic steering,
sport differential and sport
exhaust.

// Performance

Top track speed of
155 mph.³

0-60 mph in 4.4 sec.

S6



2017 Audi S6 Prestige shown in Daytona Gray pearl with available equipment.



Take your rightful seat of power.

We didn't just design the interior of the Audi S6 to keep up with the sporty exterior and the exhilarating hardware under the hood. We designed the interior to be the perfect cockpit for the driving enthusiast. And with our signature Valcona leather-covered sport seats with distinctive diamond stitching, you'll feel connected and engaged behind the wheel. Because the only thing you should have to worry about keeping up with is your car.

S6



On our radar, off your nerves.

- Cameras
- Radar sensors
- Ultrasonic sensors

Dramatization

Audi uses extra sensors for better perception.

We've made a statement with the Audi A6: "The technology is here to help you." A full array of available driver's assistance systems can help you sense what you might not know is there. Whether it's with available advanced technologies like night vision assistant, which uses infrared technology, or Audi side assist, which utilizes radar sensors to help inform you of vehicles approaching from the side and rear, you'll find that we've developed a system to help keep you aware of your surroundings, so you can concentrate on driving.¹

Standard driver assistance aids

Audi pre sense[®] basic¹

Parking system plus with rear view camera¹

Audi side assist and Audi pre sense[®] rear¹
(Premium Plus and Prestige models)

Driver Assistance package

Available on Premium Plus and Prestige models

Audi adaptive cruise control with stop & go

Audi active lane assist¹

Audi pre sense[®] plus¹

Top and corner view camera system

High-beam assistant

Other driver assistance aids

Available on Prestige models

Night vision assistant with pedestrian and large animal detection¹

For a complete list of technologies and Driver Assistance package features, please see Trim Section of this brochure for more details.

Please download and visit the Audi library—available at the App Store[®], Google Play[™] Store and AudiUSA.com/brochures—to dive deeper into the new Audi A6 as well as other models and Audi information.²

¹ The features discussed are not substitutes for attentive driving. Please see your owner's manual for further details and important limitations. ² Standard text and data usage rates apply.

Our focus is your focus.

Let's face it—in our modern lives, we are constantly pulled in different directions. To help combat this, the available MMI® system offers a wealth of easily accessible information with a simple touch. A natural extension of your hand, MMI touch with handwriting recognition offers the ability to give commands and retrieve media with just a few simple strokes on the pad. You can access information such as music files, contact information and destinations. And the possibilities are even bigger when you input to available Audi connect®¹ or engage with the Google Earth™ navigation, which serves up colorful visuals of your location between the tachometer and speedometer.

¹ Always pay careful attention to the road, and do not drive while distracted. Audi connect® should only be used when it is safe and appropriate. Audi connect services and features are optional, provided with the support of authorized affiliated and third party service providers, and may require additional subscriptions with separate terms and conditions. Available on select models. Certain services collect location information, see Terms of Service for information about how to disable and for other details.



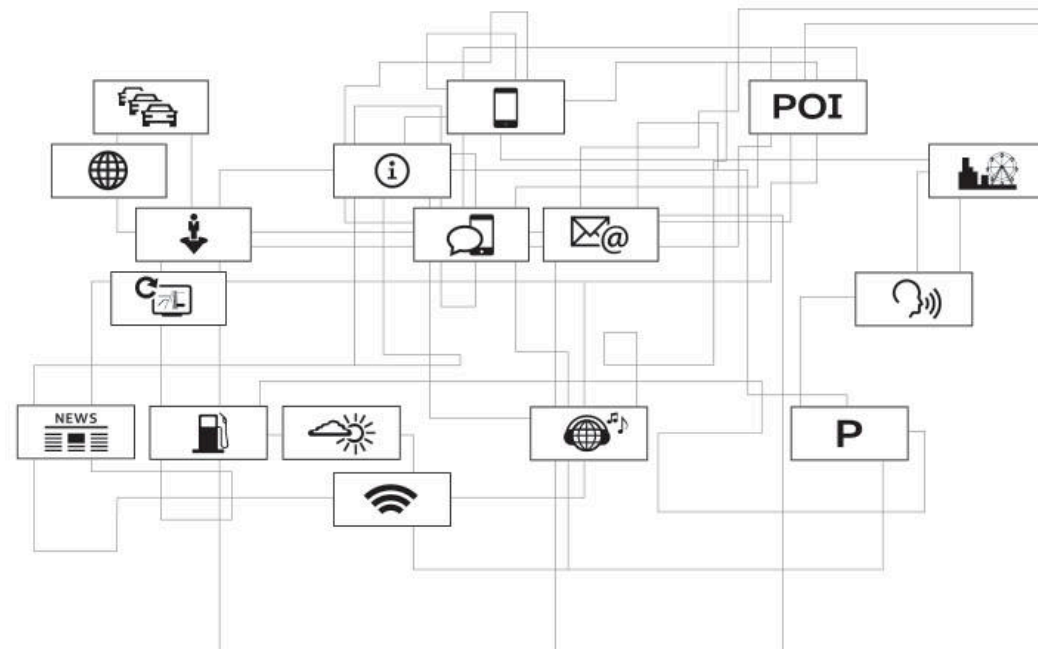
Take comfort in the familiarity of your mobile device when you connect it via available Audi smartphone interface. When linked with a compatible mobile device, Apple CarPlay™ will allow you access to Siri® and iPhone® and your favorite apps such as Apple Music™, Maps, Messages and more. If you have a compatible Android device, Google™ Android Auto can connect you with Google Play™ Music, Google Maps™, Google Search and more!¹



Shown with available Audi smartphone interface supported by Apple CarPlay™.

The soul of a new machine.

Stay connected even when you're on-the-go with the power of the available next-generation Audi connect® system.² Looking for interesting events in your area? Want to avoid heavy traffic? Want to help keep passengers entertained with an in-vehicle LTE Wi-Fi® hotspot?³ Audi connect offers a robust portfolio of services with the means to inform, entertain and get you to where you want to go.



The orchestra rises for your applause.

When we set out to compose the most precise sound system we've ever assembled, we didn't want you to just hear every note. We wanted you to experience them. From perfectly sculpted high notes to a crystal-clear mid-range to deep-diving lows, the available Bang & Olufsen® Advanced Sound System delivers a stunning recreation of sound that you can feel as much as hear. Innovative sound engineering can also be found in the available BOSE® Surround Sound System, which effortlessly brings a performance to life. So whether you're in the mood to be soothed, engaged or inspired, you can expect an immersive experience that can only be matched by the precision driving of your Audi.

1 Always pay careful attention to the road, and do not drive while distracted. Not all features available on all operating systems. Standard text and data usage rates apply. These features require compatible device, operating system, and mobile apps. See mobile device and app providers for terms and privacy. 2 Always pay careful attention to the road, and do not drive while distracted. Audi connect® should only be used when it is safe and appropriate. Audi connect services and features are optional, provided with the support of authorized affiliated and third party service providers, and may require additional subscriptions with separate terms and conditions. Available on select models. Certain services collect location information, see Terms of Service for information about how to disable and for other details. 3 Always pay careful attention to the road, and do not drive while distracted. The Wi-Fi® hotspot feature is intended for passenger use only. Connect features and technologies are optional, may require an additional subscription with separate terms and conditions, and should be used only when it is safe and appropriate. See materials provided by wireless carrier for terms, privacy, data security details. Returning devices connect automatically and use plan data unless hotspot is removed from device settings.





A. Available ambient LED interior lighting | Functional, adaptive and beautiful lighting illuminates the cabin.

B. Available 7" color driver information system | A crisp display presents navigational as well as other vehicle system information just below your field of view.

C. Audi drive select | Standard on all A6 models to help get the most out of your drive.

D. LED taillights | Standard on all A6 models.

E. Available four-zone automatic climate control | Because each passenger has their own preference.

F. Full LED headlights | Available full LED headlights help give you a clear outlook on the road ahead.

G. Available MMI® touch | Designed by our engineers to be a natural extension of your hand.

H. Audi Sport® 20" 5-double-spoke design wheel | A titanium-matte finish and red brake calipers add a compelling look to the A6 3.0T competition model.

I. Standard Dark Brown Walnut Wood inlays



You're a try-anything-once, never-sit-still, give-it-your-all kind of person. Life doesn't just string you along; you strive to take life further. Audi Genuine Accessories can help you do just that. For personalizing, help in protecting and showing your Audi pride, our accessories were made for your lifestyle.

Now for the finishing touches.



A. Compact cargo carrier¹

Extra gear won't take up valuable cargo space with our aerodynamic carrier that offers a generous 10.5-cu-ft capacity. Size: 76" long, 26" wide, 15" high.

B. Fork-mount bike rack¹

Pursuing your favorite pastime just got easier. Made of anodized aluminum, this bike rack features a quick-clamping device that can be secured with the included lock. The wheel holder attachment (sold separately) conveniently holds the front wheel of the bike and is suitable for wheels with disc brakes.



C. Ski and snowboard racks¹

These racks help transport your equipment to the slopes. The standard attachment (shown) holds two sets of skis or two snowboards. A deluxe attachment, sold separately, holds up to six sets of skis or four snowboards.

Audi Genuine Accessories

Audi Genuine Sport and Design Accessories

For a bolder appearance or a finishing touch, we have a solution that helps make every mile more enjoyable—and more yours.

- ▶ Stylish wheel designs
- ▶ Audi beam
- ▶ License plate frames

Audi TravelSpace Transport Accessories

When on the go, help make sure your gear fits with a variety of intelligent and innovative solutions.

- ▶ Bike and ski racks
- ▶ Rooftop cargo carriers
- ▶ In-vehicle cargo bags

Audi Guard Comfort and Protection Accessories

Help protect what you love. Use Audi Guard Comfort and Protection Accessories to help keep your Audi looking like new—inside and out.

- ▶ Floor mats
- ▶ First aid kit
- ▶ Cargo mats

Audi Guard Car Care Products

Your A6 deserves the best—a car care line designed specifically for Audi.

- ▶ Leather care
- ▶ Detailing tools
- ▶ Winter protection

A. 20" 5-tri-spoke wheel and tire package

Add a dramatically different look to your A6. This wheel offers a sporty yet elegant design in anthracite with machine-polished spokes.



B. A6 winter wheel and tire package

Adding style and performance, this winter wheel and tire package features Audi Original winter tires specifically engineered to help improve traction and handling in winter weather road conditions, and in temperatures below 45°F.¹ See your authorized Audi dealer for details.



C. All-weather floor mats

The all-weather floor mats feature a deep-ribbed, channeled design that helps protect your vehicle's floor and carpeting from the elements. Black mats are available in sets of two for front or rear. Front mats feature the A6 logo.



D. All-weather cargo mat

Custom-fit for your A6, the raised outside edge of the cargo mat helps contain spills and protect cargo-area carpeting from stains. The textured material helps control load shifting. Also available for S6.

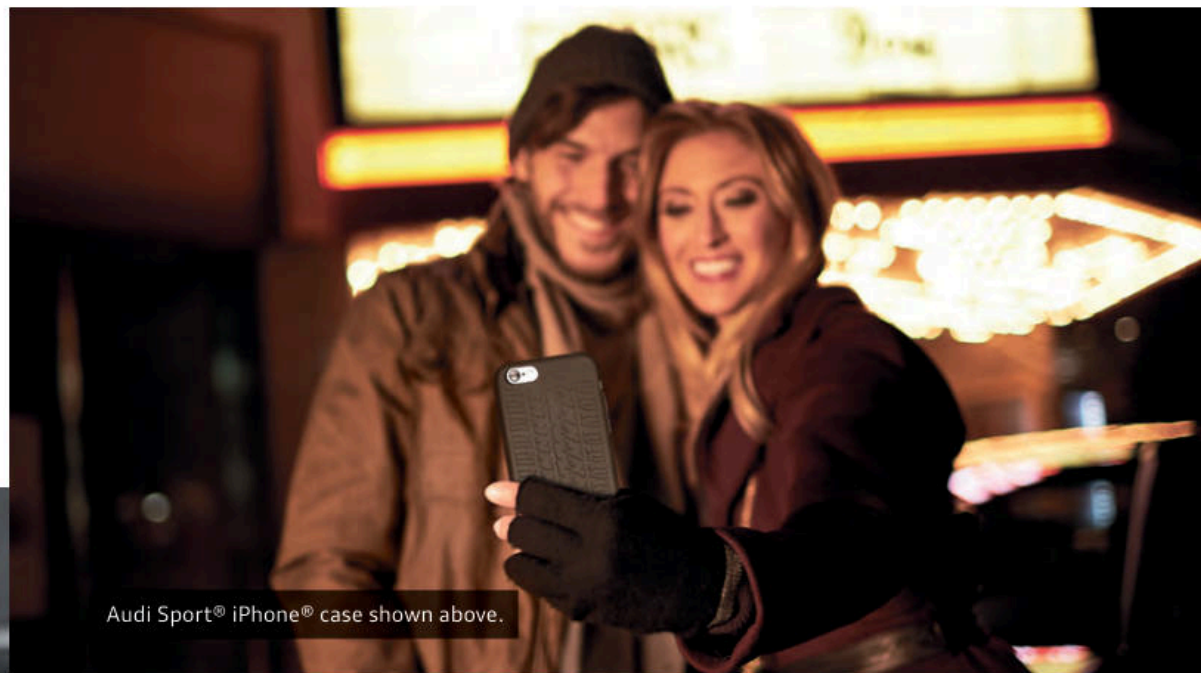


E. First aid kit

In the event of an emergency, you may want these essentials close at hand. Includes an emergency blanket, burn/wound dressings and much more.



Audi collection



Audi Sport® iPhone® case shown above.

F. Men's Ingolstadt jacket

This three-layer performance soft-shell jacket, with a bonded fleece lining and an interior membrane, features custom map artwork in front and the Audi rings logo on the sleeve.



G. Men's chronograph watch

Top-quality workmanship combines with precise Swiss movement. This elegant watch features a black leather band, stainless-steel case, black dial and the Audi logo.



H. Ladies' half-zip mock neck by Spyder®

Moisture-wicking, quick-drying, slim-fit material provides plenty of comfort. Features the Spyder® and Audi Sport® logos and is available in black, red, gray or white.



Audi Sheffield bottle by Contigo® shown above.

Visit parts.audiusa.com for more.

¹ When driving during cold, snowy, or icy weather conditions, ensure that your vehicle is equipped with appropriate all-season or winter weather tires. Even with appropriate tires, you must always drive in a manner appropriate for the weather, visibility and road conditions.

Visit audicollectionusa.com for more.

A6 3.0T competition

A win for our competitive nature.



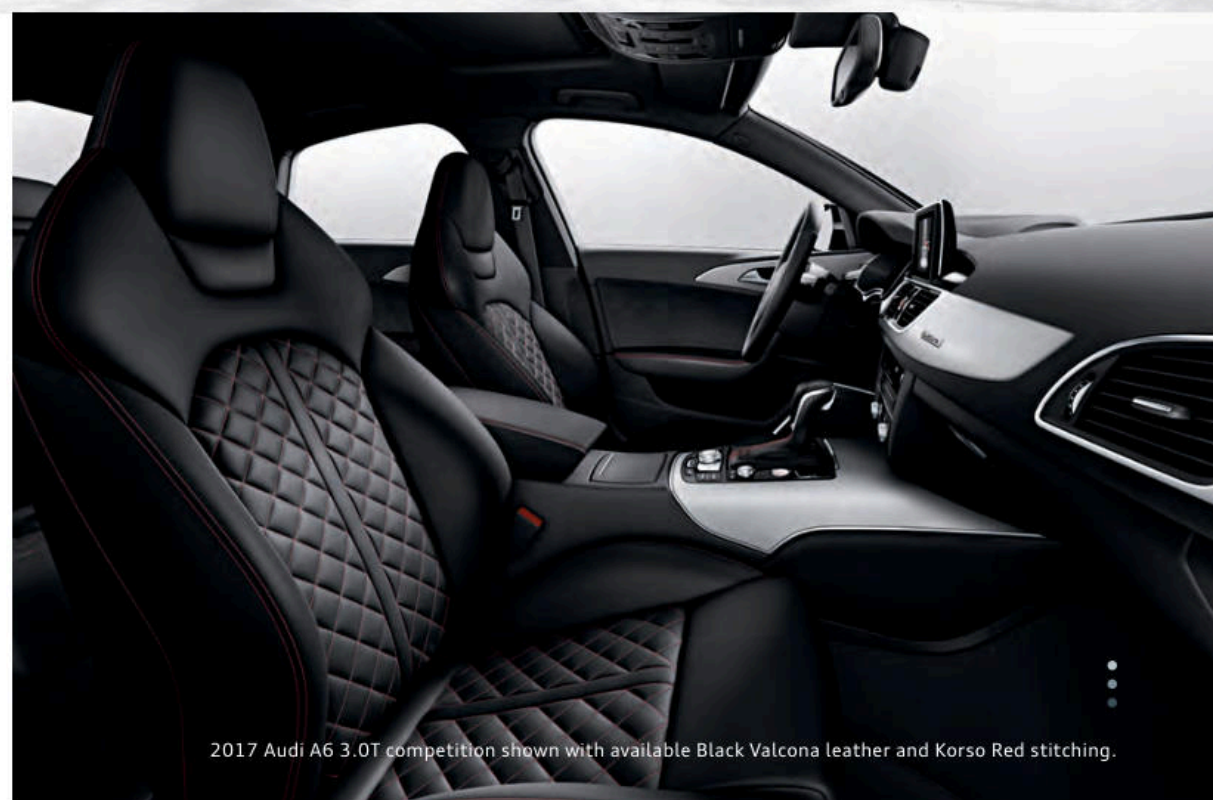
2017 Audi A6 3.0T competition shown in Misano Red pearl with available equipment.

Experience more in Audi library.

Dive deeper into the technical specifications, trim levels and technologies of the new Audi A6 through the Audi library app or web viewer.¹ Go to the App Store®, Google Play™ Store or Audiusa.com/brochures to download or view this complete repository of all things Audi—including a comprehensive look at the 2017 Audi A6.



¹ Standard text and data usage rates apply.



2017 Audi A6 3.0T competition shown with available Black Valcona leather and Korso Red stitching.

When it comes to competition, we're in a race with ourselves. The new 2017 Audi A6 3.0T competition adds design attitude with a black optic exterior, 20" Audi Sport® 5-double-spoke design wheels with a titanium-matte finish and red brake calipers to a more powerful 340-hp 3.0 TFSI® engine. With S sport seats available with contrast stitching plus hardware never before seen on an A6, like the sport rear differential, you can be assured the A6 3.0T competition is a win for the driving enthusiast.

A6

2.0T Premium



A6 Premium Featured highlights

Infotainment/Technology

- > 5" driver information system
- > MMI® radio plus with ten speakers and single CD player with MP3 playback capability
- > SiriusXM® Satellite Radio with 90-day trial subscription¹
- > SD card slot with 64GB operating capacity (dual slots)
- > Audi music interface with Lightning adapter cable
- > BLUETOOTH® wireless technology preparation for compatible mobile phone
- > Three 12-volt power outlets
- > Garage door opener (HomeLink®)

Driver Assistance/Innovation

- > Cruise control with coast, resume and accelerate features
- > Audi pre sense® basic²
- > Audi drive select
- > Parking system plus with rear view camera (front and rear sensors)²
- > Rain/light sensor for automatic windshield wipers and headlights

Exterior

- > S line® exterior appearance
- > 18" 10-spoke-V design wheels with all-season tires³
- > Xenon plus headlights with LED daytime running lights
- > Automatic headlights
- > LED taillights and rear fog lights
- > Power-adjustable, auto-dimming, heated exterior side mirrors with memory
- > S line® fender badges

- > LED turn indicator light technology integrated into the exterior side mirrors
- > Heated windshield washer nozzles
- > Aluminum trim around exterior side windows
- > Integrated twin-trapezoidal exhaust outlets

Interior/Seating

- > Three-zone automatic climate control
- > Three-spoke multifunction steering wheel with shift paddles
- > Auto-dimming interior rear view mirror
- > Dark Brown Walnut Wood inlays
- > Leather seating surfaces
- > Heated eight-way power front seats and four-way power lumbar adjustment and memory for driver
- > Split folding 60/40 rear seatbacks with pass-through
- > Stainless steel door sill inlays (with S line® badging)
- > Sunroof

Safety/Security

- > Driver and front-passenger dual-stage airbags, front thorax side airbags, knee airbags, and Sideguard® head curtain airbags⁴
- > Front-passenger occupant detection for airbags⁴
- > Lower Anchors and Tethers for Children (LATCH) in rear seats
- > Electronic Stability Control (ESC) with secondary collision brake assist and traction control (ASR)
- > Anti-lock Brake System (ABS) with Electronic Brake pressure Distribution (EBD) and brake assist
- > Tire-pressure monitoring system
- > Electromechanical parking brake

A6 Premium Stand-alone options

- > Audi advanced key—keyless start, stop and entry⁵
- > Rear-passenger thorax side airbags⁴
- > Achat Gray Fine Grain Birch Wood inlays
- > Layered Walnut Wood inlays

A6 Premium Available packages

Cold Weather package

- > Heated steering wheel
- > Heated rear seats

MMI® navigation plus package

- > MMI® navigation plus with voice control system⁶
- > MMI® touch with handwriting-recognition technology
- > Audi connect® with six-month trial subscription⁷
- > 7" color driver information system
- > HD Radio™ Technology
- > INRIX XD® Traffic⁸
- > Audi smartphone interface including Apple CarPlay™ and Google™ Android Auto
- > BLUETOOTH® streaming audio for compatible devices

19" Sport package

- > Sport suspension calibration
- > Audi Sport® 19" 10-spoke design wheels
- > 255/40 all-season tires³
- > Black cloth headliner (with Black or Nougat Brown interior only)

19" Black optic package

- > Audi Sport® 19" 10-spoke design wheels, titanium-matte finish
- > 255/40 all-season tires³
- > Gloss black Singleframe® grille
- > Gloss black trim around exterior side windows

20" Wheel package

- > 20" 5-arm-star design wheels, gray/polished finish
- > 255/35 summer performance tires³

¹ SiriusXM® Satellite Radio and SiriusXM® Traffic subscriptions are sold separately or as a package after trial period and are continuous until you call SiriusXM® to cancel. See Customer Agreement for complete terms and more information at www.siriusxm.com. SiriusXM® Traffic service available in select markets. SiriusXM® U.S. Satellite Service available only to those in the 48 contiguous U.S.A., D.C. and Puerto Rico (with coverage limitations). ² The features discussed are not substitutes for attentive driving. Please see your owner's manual for further details, and important limitations. ³ Tires are supplied and warranted by their manufacturer. High-performance tires are designed for optimum performance and handling in warm climates. They are not suitable for cold, snowy, or icy weather conditions. If you drive under those circumstances, you should equip your vehicle with all-season or winter tires, which offer better traction under those conditions. We suggest you use the recommended winter or all-season tire specified for your car or its equivalent. These high-performance tires also have a lower aspect ratio that aids performance and handling; however, in order to avoid tire, rim, or vehicle damage, it is important that the inflation pressure is regularly checked and maintained at optimum levels. Please also remember in making your selection that, while these tires deliver responsive handling, they may ride less comfortably and make more noise than other choices. Finally, these tires may wear more quickly than other choices. ⁴ Airbags are supplemental restraints only and will not deploy in all crash circumstances. Always use safety belts and refer to your owner's manual for the proper use of the restraint systems when transporting children. ⁵ Some Audi models are equipped with a keyless ignition feature. The details as to how the system works can vary, and Audi owners should consult their owner's literature or an authorized Audi dealer if they have further questions about the operation of this feature. Please note that Audi warns against leaving the vehicle unattended with the engine running, particularly in enclosed spaces. ⁶ MMI® navigation plus depends on signals from the worldwide Global Positioning Satellite network. The vehicle's electrical system and existing wireless and satellite technologies must be available and operating properly for the system to function. The system is designed to provide you with suggested routes in locating addresses, destinations and other points of interest. Changes in street names, construction zones, traffic flow, points of interest and other road system changes are beyond the control of Audi of America, Inc. Complete detailed mapping of lanes, roads, streets, toll roads, highways, etc., is not possible, therefore you may encounter discrepancies between the mapping and your actual location. Please rely on your individual judgment in determining whether or not to follow a suggested MMI® navigation plus route. Mapping updates are available at no charge for the first five map updates and are subsequently available on a subscription basis. ⁷ Always pay careful attention to the road, and do not drive while distracted. The features and technologies discussed above are optional, may require an additional subscription with separate terms and conditions, and should be used only when it is safe and appropriate. The Wi-Fi® hotspot feature is intended for passenger use only. ⁸ INRIX XD® Traffic is available on all Model Year 17+ A4, A6, A7, TT and Q7 vehicles and is included with an Audi connect® subscription. Other models (A3, A5, A8, Q3 and Q5) include SiriusXM® Traffic for four years with the purchase of the vehicle.

A6

2.0T and 3.0T Premium Plus



A6 Premium Plus Featured highlights



In addition to or replaces highlighted features of A6 Premium

Infotainment/Technology

- > MMI® navigation plus with voice control system¹
- > MMI® touch with handwriting-recognition technology
- > Audi connect® with six-month trial subscription²
- > 7" color driver information system
- > BOSE® Surround Sound System with 14 speakers, AudioPilot® noise compensation and 630 watts
- > HD Radio™ Technology
- > INRIX XD® Traffic³
- > Audi smartphone interface including Apple CarPlay™ and Google™ Android Auto⁴
- > BLUETOOTH® streaming audio for compatible devices

Driver Assistance/Innovation

- > Audi advanced key—keyless start, stop and entry⁵
- > Audi side assist and Audi pre sense® rear⁶

Exterior

- > Power-adjustable, power-folding, auto-dimming, heated exterior side mirrors with memory

Interior

- > Four-zone automatic climate control
- > Power tilt and telescopic adjustable steering column

A6 Premium Plus Stand-alone options

- > 19" 255/40 summer performance tires⁷ (3.0T only)
- > Full LED headlights
- > Rear-passenger thorax side airbags⁸
- > Achat Gray Fine Grain Birch Wood inlays
- > Layered Walnut Wood inlays
- > Manual rear-side window and power rear window sunshades

A6 Premium Plus Available packages

Cold Weather package

- > Heated steering wheel
- > Heated rear seats

Driver Assistance package

- > Audi adaptive cruise control with stop & go
- > Audi active lane assist⁶
- > Audi pre sense® plus⁶
- > Top and corner view camera system
- > High-beam assistant

19" Sport package

- > Sport suspension calibration
- > Audi Sport® 19" 10-spoke design wheels
- > 255/40 all-season tires⁷
- > Black cloth headliner (with Black or Nougat Brown interior only)

19" Black optic package

- > Audi Sport® 19" 10-spoke design wheels, titanium-matte finish
- > 255/40 all-season tires⁷
- > Gloss black Singleframe® grille
- > Gloss black trim around exterior side windows

20" Wheel package

- > 20" 5-arm-star design wheels, gray/polished finish
- > 255/35 summer performance tires⁷

20" Black optic package (3.0T only)

- > 20" 5-arm-star design wheels, black/polished finish
- > 255/35 summer performance tires⁷
- > Gloss black Singleframe® grille
- > Gloss black trim around exterior side windows

¹ MMI® navigation plus depends on signals from the worldwide Global Positioning Satellite network. The vehicle's electrical system and existing wireless and satellite technologies must be available and operating properly for the system to function. The system is designed to provide you with suggested routes in locating addresses, destinations and other points of interest. Changes in street names, construction zones, traffic flow, points of interest and other road system changes are beyond the control of Audi of America, Inc. Complete detailed mapping of lanes, roads, streets, toll roads, highways, etc., is not possible, therefore you may encounter discrepancies between the mapping and your actual location. Please rely on your individual judgment in determining whether or not to follow a suggested MMI® navigation plus route. Mapping updates are available at no charge for the first five map updates and are subsequently available on a subscription basis. ² Always pay careful attention to the road, and do not drive while distracted. Audi connect® should only be used when it is safe and appropriate. Audi connect services and features are optional, provided with the support of authorized affiliated and third party service providers, and may require additional subscriptions with separate terms and conditions. Available on select models. Certain services collect location information, see Terms of Service for information about how to disable and for other details. ³ INRIX XD® Traffic is available on all Model Year 17+ A4, A6, A7, TT and Q7 vehicles and is included with an Audi connect® subscription. Other models (A3, A5, A8, Q3 and Q5) include SiriusXM® Traffic for four years with the purchase of the vehicle. ⁴ Always pay careful attention to the road, and do not drive while distracted. Not all features available on all operating systems. Standard text and data usage rates apply. These features require compatible device, operating system, and mobile apps. See mobile device and app providers for terms and privacy. ⁵ Some Audi models are equipped with a keyless ignition feature. The details as to how the system works can vary, and Audi owners should consult their owner's literature or an authorized Audi dealer if they have further questions about the operation of this feature. Please note that Audi warns against leaving the vehicle unattended with the engine running, particularly in enclosed spaces. ⁶ The features discussed are not substitutes for attentive driving. See owner's manual for further details and important limitations. ⁷ Tires are supplied and warranted by their manufacturer. High-performance tires are designed for optimum performance and handling in warm climates. They are not suitable for cold, snowy, or icy weather conditions. If you drive under those circumstances, you should equip your vehicle with all-season or winter tires, which offer better traction under those conditions. We suggest you use the recommended winter or all-season tire specified for your car or its equivalent. These high-performance tires also have a lower aspect ratio that aids performance and handling; however, in order to avoid tire, rim, or vehicle damage, it is important that the inflation pressure is regularly checked and maintained at optimum levels. Please also remember in making your selection that, while these tires deliver responsive handling, they may ride less comfortably and make more noise than other choices. Finally, these tires may wear more quickly than other choices. ⁸ Airbags are supplemental restraints only and will not deploy in all crash circumstances. Always use safety belts and refer to your owner's manual for the proper use of the restraint systems when transporting children.

A6

3.0T Prestige and 3.0T competition



A6 Prestige Featured highlights



In addition to or replaces highlighted features of A6 Premium Plus

Driver assistance/Innovation

- > Head-up display with navigation information

Exterior

- > Full LED headlights
- > Power trunk

Interior/Seating

- > Ambient LED interior lighting
- > Manual rear-side window and power rear window sunshades
- > Ventilated twelve-way power front seats, including four-way power lumbar adjustment

A6 3.0T competition Featured highlights



In addition to or replaces highlighted features of A6 Prestige

Engineering/Performance

- > 340-hp 3.0-liter TFSI® supercharged V6

Suspension/Chassis

- > Sport suspension calibration
- > quattro® sport differential
- > Red brake calipers (front and rear)

Exterior

- > A6 3.0T competition S line® exterior appearance
- > Audi Sport® 5-double-spoke design wheels, titanium-matte finish
- > 255/35 summer performance tires¹
- > Gloss black Singleframe® grille
- > Black exterior side mirror housings
- > Gloss black trim around exterior side windows

Interior/Seating

- > Three-spoke multifunction flat-bottom steering wheel with shift paddles (with S line® badging)
- > Brushed Aluminum inlays
- > Valcona leather seats with diamond stitching
- > Twelve-way power front sport-contoured seats, including four-way power lumbar adjustment
- > Leather-wrapped door armrests
- > Black cloth headliner

A6 Prestige Stand-alone options

- > 19" 255/40 summer performance tires (3.0T Prestige only)¹
- > Rear-passenger thorax side airbags²
- > Achat Gray Fine Grain Birch Wood inlays
- > Layered Walnut Wood inlays (3.0T Prestige only)
- > Piano Black Wood inlays (3.0T competition only)
- > Bang & Olufsen® Advanced Sound System with 15 speakers and 1,300 watts
- > Night vision assistant with pedestrian and large animal detection³

A6 Prestige and 3.0T competition Available packages

Cold Weather package

- > Heated steering wheel (deletes flat-bottom steering wheel on 3.0T competition)
- > Heated rear seats

Driver Assistance package

- > Audi adaptive cruise control with stop & go
- > Audi active lane assist³
- > Audi pre sense® plus³
- > Top and corner view camera system
- > High-beam assistant

19" Sport package (3.0T Prestige only)

- > Sport suspension calibration
- > Audi Sport® 19" 10-spoke design wheels
- > 255/40 all-season tires¹
- > Black cloth headliner (with Black or Nougat Brown interior only)

19" Black optic package (3.0T Prestige only)

- > Audi Sport® 19" 10-spoke design wheels, titanium-matte finish
- > 255/40 all-season tires¹
- > Gloss black Singleframe® grille
- > Gloss black trim around exterior side windows

20" Wheel package (3.0T Prestige only)

- > 20" 5-arm-star design wheels, gray/polished finish
- > 255/35 summer performance tires¹

20" Black optic package (3.0T Prestige only)

- > 20" 5-arm-star design wheels, black/polished finish
- > 255/35 summer performance tires¹
- > Gloss black Singleframe® grille
- > Gloss black trim around exterior side windows

Comfort Seating package (3.0T Prestige only)

- > Heated and ventilated 18-way power individual-contour comfort front seats, including four-way power lumbar adjustment and massage function
- > Valcona leather seats
- > Front passenger seat memory

¹ Tires are supplied and warranted by their manufacturer. High-performance tires are designed for optimum performance and handling in warm climates. They are not suitable for cold, snowy, or icy weather conditions. If you drive under those circumstances, you should equip your vehicle with all-season or winter tires, which offer better traction under those conditions. We suggest you use the recommended winter or all-season tire specified for your car or its equivalent. These high-performance tires also have a lower aspect ratio that aids performance and handling; however, in order to avoid tire, rim, or vehicle damage, it is important that the inflation pressure is regularly checked and maintained at optimum levels. Please also remember in making your selection that, while these tires deliver responsive handling, they may ride less comfortably and make more noise than other choices. Finally, these tires may wear more quickly than other choices. ² Airbags are supplemental restraints only and will not deploy in all crash circumstances. Always use safety belts and refer to your owner's manual for the proper use of the restraint systems when transporting children. ³ The features discussed are not substitutes for attentive driving. Please see your owner's manual for further details, and important limitations.

S6

Premium Plus and Prestige



S6 Premium Plus Featured highlights



In addition to or replaces highlighted features of A6 Premium Plus

Engineering/Performance

- > 4.0-liter TFSI® turbocharged V8
- > 450 hp/406 lb-ft torque
- > cylinder on demand™ engine efficiency technology¹
- > Acceleration (0–60 mph) in 4.4 seconds
- > Top track speed of 155 mph²

Transmission/Suspension/Chassis

- > Seven-speed S tronic® dual-clutch automatic transmission
- > Audi adaptive air suspension (with S model-specific tuning)
- > 15.7" ventilated front disc/14.0" ventilated rear disc brakes (with S6 badging)

Exterior

- > Platinum gray Singleframe® grille
- > S model-specific front/rear fasciae and side sills
- > Aluminum-optic front/rear twin-blade fins
- > Aluminum-optic exterior side mirror housings
- > Body-colored trunk-mounted rear lip spoiler
- > S model quad exhaust outlets

Interior/Seating

- > Three-spoke multifunction flat-bottom steering wheel with shift paddles (with S6 badging)
- > Achat Gray Fine Grain Birch Wood inlays
- > Stainless-steel door sill inlays (with S6 badging)
- > Valcona leather seats with contrast diamond stitching (with S6 designation)
- > Twelve-way power front sport-contoured seats, including four-way power lumbar adjustment
- > Leather-wrapped door armrests
- > Black cloth headliner

S6 Prestige Featured highlights



In addition to or replaces highlighted features of S6 Premium Plus

Driver assistance/Innovation

- > Head-up display with navigation information

Exterior

- > Full LED headlights
- > Power trunk

Interior

- > Ambient LED interior lighting
- > Manual rear-side window and power rear window sunshades

S6 Stand-alone options

- > 20" 5-parallel-spoke S design wheels with 255/35 summer performance tires³
- > Rear-passenger thorax side airbags⁴
- > Full LED headlights (S6 Premium Plus only)
- > Carbon Atlas inlays
- > Layered Aluminum/Black Wood inlays
- > Black Alcantara® headliner
- > Manual rear-side window and power rear window sunshades (S6 Premium Plus only)
- > Bang & Olufsen® Advanced Sound System with 15 speakers and 1,300 watts (S6 Prestige only)
- > Night vision assistant with pedestrian and large animal detection (S6 Prestige only)⁵

S6 Available packages

Cold Weather package

- > Heated steering wheel (deletes flat-bottom steering wheel)
- > Heated rear seats

Driver Assistance package

- > Audi adaptive cruise control with stop & go
- > Audi active lane assist⁵
- > Audi pre sense® plus⁵
- > Top and corner view camera system
- > High-beam assistant

S6 Sport package

- > quattro® sport differential
- > Dynamic steering
- > Red brake calipers (front and rear)
- > Sport exhaust system with black outlets

Black optic package

- > Audi Sport® 20" 5-double-spoke design wheels, titanium-matte finish
- > 255/35 summer performance tires³
- > Gloss black Singleframe® grille
- > Gloss black trim around exterior side windows
- > Body-colored exterior side mirror housings

Comfort Seating package

- > Heated and ventilated 18-way power individual-contour comfort front seats, including four-way power lumbar adjustment and massage function
- > Valcona leather seats (without contrast diamond stitching)
- > Front passenger seat memory

Arras Red Audi design selection

- > Arras Red Valcona leather seats with contrast diamond stitching
- > Carbon Twill, Red inlays
- > Granite Gray contrast stitching

¹ Based on EPA estimates. See www.fueleconomy.gov for details. Your mileage will vary and depends on several factors, including your driving habits and vehicle condition. ² Top track speed is electronically limited in the U.S. Always obey all speed and traffic laws. ³ Tires are supplied and warranted by their manufacturer. High-performance tires are designed for optimum performance and handling in warm climates. They are not suitable for cold, snowy, or icy weather conditions. If you drive under those circumstances, you should equip your vehicle with all-season or winter tires, which offer better traction under those conditions. We suggest you use the recommended winter or all-season tire specified for your car or its equivalent. These high-performance tires also have a lower aspect ratio that aids performance and handling; however, in order to avoid tire, rim, or vehicle damage, it is important that the inflation pressure is regularly checked and maintained at optimum levels. Please also remember in making your selection that, while these tires deliver responsive handling, they may ride less comfortably and make more noise than other choices. Finally, these tires may wear more quickly than other choices. ⁴ Airbags are supplemental restraints only and will not deploy in all crash circumstances. Always use safety belts and refer to your owner's manual for the proper use of the restraint systems when transporting children. ⁵ The features discussed are not substitutes for attentive driving. Please see your owner's manual for further details, and important limitations.

Technical Specifications

Engineering Performance	A6 2.0T	A6 3.0T	A6 3.0T competition	S6
Engine type	Four-cylinder	Six-cylinder	Six-cylinder	Eight-cylinder
Engine block/Cylinder head	Cast iron/Aluminum-alloy	Aluminum-alloy	Aluminum-alloy	Aluminum-alloy
Displacement (cc)/Bore and stroke (mm)	1,984/82.5 x 92.8	2,995/84.5 x 89.0	2,995/84.5 x 89.0	3,993/84.5 x 89.0
Horsepower (@ rpm)	252 @ 5,000–6,000	333 @ 5,500–6,500	340 @ 5,500–6,500	450 @ 5,800–6,400
Torque (lb-ft @ rpm)	273 @ 1,600–4,500	325 @ 2,900–5,300	325 @ 2,900–5,300	406 @ 1,400–5,700
Compression ratio	9.6:1	10.8:1	10.8:1	10.1:1
Valvetrain	16-valve DOHC with valvelift system	24-valve DOHC with variable valve timing	24-valve DOHC with variable valve timing	32-valve DOHC with variable valve timing
Induction/Fuel injection	Turbocharged/TFSI®	Supercharged/TFSI®	Supercharged/TFSI®	Turbocharged/TFSI®
cylinder on demand™ engine efficiency technology¹	—	—	—	■
Start-stop engine efficiency system¹	■	■	■	■
Acceleration with Tiptronic® transmission (0–60 mph)	5.8 seconds	5.1 seconds	5.1 seconds	—
Acceleration with S tronic® transmission (front-wheel drive/quattro® all-wheel drive, 0–60 mph)	6.7 seconds/—	—	—	—/4.4 seconds
Top track speed²	130 mph	130 mph	130 mph	155 mph

Transmission Drivetrain	A6 2.0T	A6 3.0T	A6 3.0T competition	S6
Seven-speed S tronic® dual-clutch transmission with front-wheel drive	■	—	—	—
Eight-speed Tiptronic® automatic transmission with quattro® all-wheel drive	Available	■	■	—
Seven-speed S tronic® dual-clutch transmission with quattro® all-wheel drive	—	—	—	■
Sport differential	—	—	■	Available

Body Suspension Chassis	A6 2.0T	A6 3.0T	A6 3.0T competition	S6
Lightweight technology—aluminum exterior body panels and a steel chassis	■	■	■	■
Five-link front suspension	■	■	■	■
Trapezoidal-link rear suspension	■	■	■	■
Audi adaptive air suspension (with S model-specific tuning)	—	—	—	■
Sport suspension calibration	Available	Available	■	■
Ventilated front disc/Ventilated rear disc brakes (in)	13.6/13.0	14.0/13.0	14.0/13.0	15.7/14.0
Electromechanical power steering system	■	■	■	■
Dynamic steering	—	—	—	Available
Steering ratio	16.1:1	16.1:1	16.1:1	16.1:1
Turning diameter, curb-to-curb (ft)	39.0	39.0	39.0	39.0

Exterior measurements	A6 2.0T	A6 3.0T	A6 3.0T competition	S6
Wheelbase (in)	114.6	114.6	114.6	114.8
Length (in)	194.2	194.2	194.2	194.4
Height (in)	57.8	57.8	57.8	56.8
Overall width with mirrors (in)	82.1	82.1	82.1	82.1
Overall width without mirrors (in)	73.8	73.8	73.8	73.8
Track (in, front/rear)	64.1/63.7	64.1/63.7	64.1/63.7	63.6/63.2
Curb weight with S tronic® transmission (front-wheel drive/quattro® all-wheel drive, lb)	3,858/—	—	—	—/4,497
Curb weight with Tiptronic® transmission (lb)	4,023	4,233	4,288	—
Drag coefficient (Cw)	0.28	0.28	0.28	0.29

Interior measurements	A6 2.0T	A6 3.0T	A6 3.0T competition	S6
Head room with sunroof (in, front/rear)	37.2/37.8	37.2/37.8	37.2/37.8	37.2/37.8
Leg room (in, front/rear)	41.3/37.4	41.3/37.4	41.3/37.4	41.3/37.4
Shoulder room (in, front/rear)	57.5/56.3	57.5/56.3	57.5/56.3	57.5/56.3
Cargo volume (cu ft, rear seatbacks up)	14.1	14.1	14.1	14.1
Seating capacity	5	5	5	5

EPA mileage estimates Capacities Emissions	A6 2.0T	A6 3.0T	A6 3.0T competition	S6
S tronic® transmission with front-wheel drive (city/highway/combined)¹	NA	—	—	—
S tronic® transmission with quattro® all-wheel drive (city/highway/combined)¹	—	—	—	NA
Tiptronic® automatic transmission with quattro® all-wheel drive (city/highway/combined)¹	NA	NA	NA	—
Engine oil (qt)	4.9	7.2	7.2	8.8
Fuel (gal)	19.8	19.8	19.8	19.8
Recommended fuel	Premium	Premium	Premium	Premium
Emissions rating	ULEV125	ULEV125	ULEV125	ULEV II

■ Standard — Not applicable NA Information not available at time of printing

¹ 2017 EPA estimates not available at time of printing. See www.fueleconomy.gov for details. Your mileage will vary and depends on several factors, including your driving habits and vehicle condition. ² Top track speed is electronically limited in the U.S. Always obey all speed and traffic laws.

Wheels

18" 10-spoke-V design



A6 standard

Audi Sport® 19" 10-spoke design



A6 19" Sport package

Audi Sport® 19" 10-spoke design
titanium-matte finish



A6 19" Black optic package

20" 5-arm-star design
gray/polished finish



A6 20" Wheel package

20" 5-arm-star design
black/polished finish



A6 3.0T 20" Black optic package

Audi Sport® 20" 5-double-spoke design
titanium-matte finish¹



A6 3.0T competition standard, S6 Black optic package

19" 5-parallel-spoke S design



S6 standard

20" 5-parallel-spoke S design



S6 optional

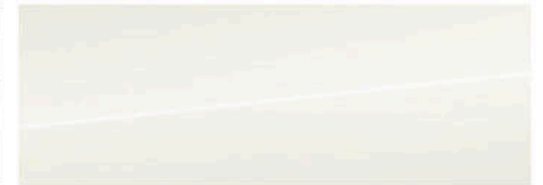
Exterior Colors

Brilliant Black



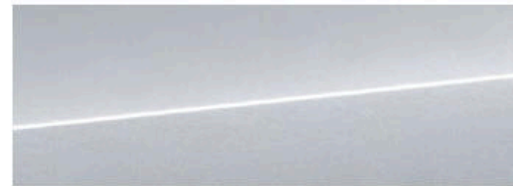
A6, A6 3.0T competition, S6

Ibis White



A6, A6 3.0T competition, S6

Florett Silver metallic



A6, A6 3.0T competition, S6

Glacier White metallic



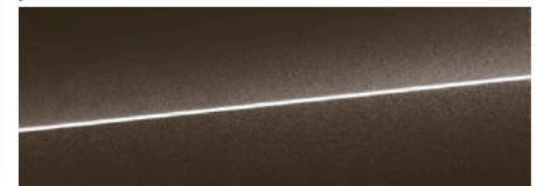
A6, A6 3.0T competition, S6

Havana Black metallic



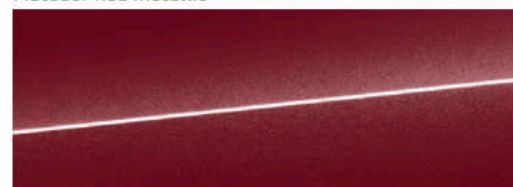
A6, S6

Java Brown metallic



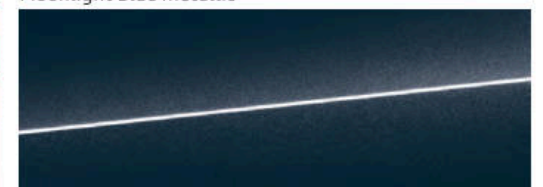
A6

Matador Red metallic



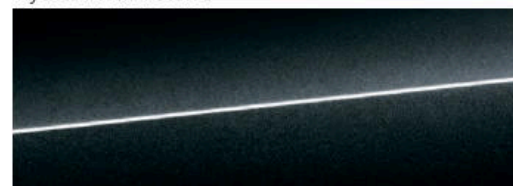
A6

Moonlight Blue metallic



A6, A6 3.0T competition, S6

Mythos Black metallic



A6, A6 3.0T competition, S6

Oolong Gray metallic



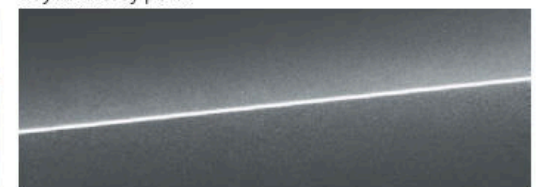
A6, S6

Tornado Gray metallic



A6, A6 3.0T competition, S6

Daytona Gray pearl



A6 3.0T competition, S6

Misano Red pearl



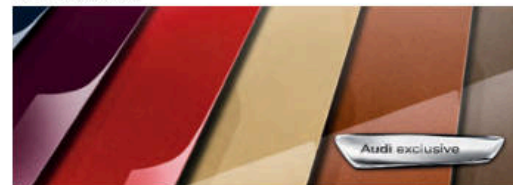
A6 3.0T competition, S6

Sepang Blue pearl



S6

Audi exclusive



Available on all vehicles in the A6 family

¹ 2017 A6 3.0T competition model shown.

Exterior color options will vary based on model, trim level and package combination. See your dealer for details.

Interior Inlays



Dark Brown Walnut Wood



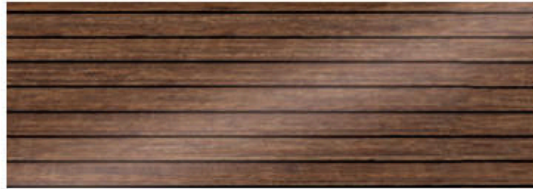
A6 standard

Achat Gray Fine Grain Birch Wood



A6 optional, A6 3.0T competition optional, S6 standard

Layered Walnut Wood



A6 optional

Brushed Aluminum



A6 3.0T competition standard

Piano Black Wood



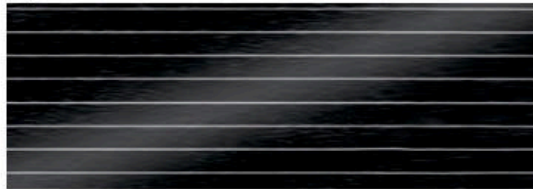
A6 3.0T competition optional

Carbon Atlas



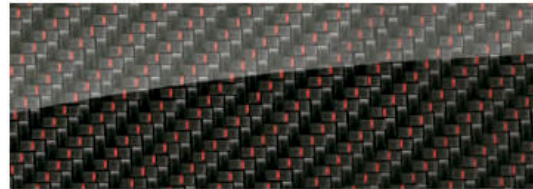
S6 optional

Layered Aluminum/Black Wood



S6 optional

Carbon Twill, Red



S6 Arras Red Audi design selection

Audi exclusive



Available on all vehicles in the A6 family

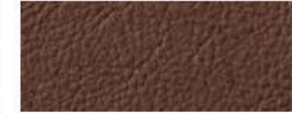
Interior Colors and Seat Selections

Black leather



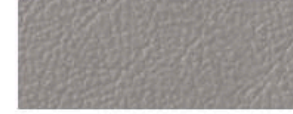
A6 Standard Seat

Nougat Brown leather



A6 Standard Seat

Flint Gray leather



A6 Standard Seat

Atlas Beige leather



A6 Standard Seat

Black Perforated leather



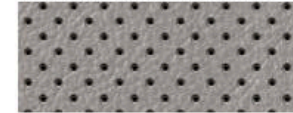
A6 Ventilated Seat

Nougat Brown Perforated leather



A6 Ventilated Seat

Flint Gray Perforated leather



A6 Ventilated Seat

Atlas Beige Perforated leather



A6 Ventilated Seat

Black Perforated Valcona leather



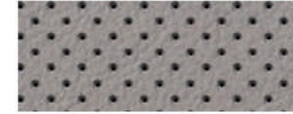
A6/S6 Individual Contour Seat

Nougat Brown Perforated Valcona leather



A6 Individual Contour Seat

Flint Gray Perforated Valcona leather



A6/S6 Individual Contour Seat

Atlas Beige Perforated Valcona leather



A6 Individual Contour Seat

Black Valcona leather with Silver contrast diamond stitching



S6 Sport Seat

Black Valcona leather with diamond stitching



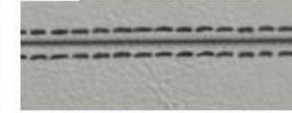
A6 3.0T competition Seat

Black Valcona leather with Korso Red contrast diamond stitching



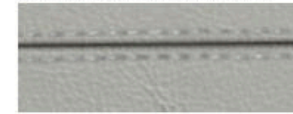
A6 3.0T competition Seat

Lunar Silver Valcona leather with Graphite Gray contrast diamond stitching



S6 Sport Seat

Lunar Silver Valcona leather with Dark Silver diamond stitching



A6 3.0T competition Seat

Arras Red Valcona leather with Granite Gray contrast diamond stitching



S6 Sport Seat

Audi exclusive



Available on all vehicles in the A6 family



Standard Seat



Ventilated Seat



Individual Contour Seat



A6 3.0T competition/S6 Sport Seat¹

A6
2017Audi of America
AudiUSA.com
Facebook.com/Audi

Note: A word about this brochure. Audi of America, Inc., believes the specifications in this brochure to be correct at the time of printing. However, specifications, standard equipment, options, fabrics, and colors are subject to change without notice. Some equipment may be unavailable when your vehicle is built. Please ask your dealer for advice concerning current availability of standard and optional equipment, and your dealer will verify that your vehicle will include the equipment you ordered. Vehicles in this brochure are shown with optional equipment. See your dealer for complete details on the Audi New Vehicle Limited Warranty, twelve-year limited warranty against corrosion perforation, and Audi 24/7 Roadside Assistance. (Roadside assistance coverage provided by Road America in the U.S. Certain conditions apply; see your dealer for details.) Tires supplied by various manufacturers. "Audi," all model names, "Audi connect," "Audi pre sense," "Audi Sport," "MMI," "quattro," "S line," "S tronic," "Sideguard," "Singleframe," "TFSI" and the four rings logo are registered trademarks of AUDI AG. "Alcantara" is a registered trademark of Alcantara S.p.A. "App Store" is a registered trademark of Apple Inc. "AudioPilot" is a registered trademark of the BOSE Corporation. "Bang & Olufsen" is a registered trademark of Bang & Olufsen. The BLUETOOTH word mark and logos are owned by the Bluetooth SIG, Inc., and any use of such marks by AUDI AG is under license. "BOSE" is a registered trademark of the BOSE Corporation. "HomeLink" is a registered trademark of Gentex Corporation. "INRIX XD" is a registered trademark of INRIX, Inc. "iPad," "iPhone" and "iPod" are registered trademarks of Apple Inc. "Siri" is a registered trademark of Apple Inc. "SiriusXM" and all related marks and logos are trademarks of Sirius XM Radio Inc. and its subsidiaries. "Tiptronic" is a registered trademark of Dr. Ing h.c. F. Porsche AG. "Wi-Fi" is a registered trademark of the Wi-Fi Alliance. All other trademarks are the property of their respective owners. Some European models shown. Some features may not be available at time of order.