



# A8

Audi A8 L | S8

Audi  
Truth in Engineering







## Reflecting on what matters most to us.

In so many ways, it's really all connected. How an Audi vehicle is engineered and designed isn't simply a matter of physics or architecture, it's a systematic compilation of disparate disciplines and ideas, forged into something iconic, sophisticated and powerful. What you feel behind the wheel is, in so many ways, a product of the knowledge and imagination of human history. The principles of Newtonian laws, sure—but also the grace of choreography, time-honored artisanal craftsmanship and the connectivity of modern life. The end result of these inspirations is your Audi—a thing meaningful, intuitive and strong. We employ the sum of our skills and understanding to reflect something that goes deeper than our machines.

Take your seat at the head of the class.



You know it when you see it, but you can't exactly put your finger on why it's so special. It attracts attention without being ostentatious and piques interest, inspiring others to follow. In French, it's called *je ne sais quoi*. We call it the Audi A8. The allure of the A8 starts with its modern design, including the sleek elegance of the Dynamic line, which highlights the luxurious proportions of the A8 body. Our never-ending obsession with giving attention to the finest details is demonstrated in the Character line that creates body design cohesion, linking the headlights to the rear deck lid seamlessly. Although the exterior of the A8 is striking in its beauty, it is not meant to be put on display, but to be engaged with. It conveys a sense of prestige, distinction and class with a degree of design integrity that will always keep the A8 and its driver at the head of its class.



## A8 L | S8

*The A8 and its sibling S8 showcase where luxury and performance collide. They are sedans that are designed for those who prefer their art with four wheels.*





# The irrepressible actuality of light.

Light is a wave and an energy. It's also a feeling. And an inspiration. Light is a physical manifestation and a spiritual metaphor. For Audi designers, light represents the soul of automotive design. We use it to give lines context, add a shimmering allure, or give shapes a visual texture or depth. In the sun or on a city street, the vehicle becomes luminescent, a seductive, ever-shifting configuration of energy itself, expressed in the brilliance of each design line.

## We've sculpted a moving masterpiece.

All great masterpieces start with raw materials and an artist's vision. We think of Audi engineers and designers as a collective of automotive artists who use innovative materials and forward-thinking design to create moving masterpieces you will feel inspired to add to your collection. From front to rear, you will be amazed by the bold illumination given off by the iconic, standard full LED headlights that elevate the Audi A8 exterior. The chiseled V shape across the hood originates with the signature Singleframe® grille and travels along the length of the vehicle, accentuating the powerful engine under the hood. Whether you're inspired by the power of the available 4.0-liter TFSI® V8, the efficiency of the 3.0-liter TDI® clean-diesel engine<sup>1</sup> or the exclusivity of the Audi A8 L W12, we've committed ourselves to developing materials sculpted for your performance.



<sup>1</sup> 24 city/36 highway/28 combined mpg (2016 Audi A8 L TDI® clean diesel with eight-speed Tiptronic® automatic transmission and quattro® all-wheel drive). EPA estimates. Your mileage will vary and depends on several factors, including your driving habits and vehicle condition.

*The dramatic Character line gives the A8 exterior a sculpted, athletic look, adding dimension and a sense of motion as the light changes throughout the day.*





2016 Audi A8 L W12 shown in Mythos Black metallic with available equipment.

## A more refined version of performance art.

Any powerful performance starts with an idea that is then channeled through a vessel, resulting in a product that commands attention from any audience with its commitment to craft. Even with unseen features, the Audi A8 conveys our commitment to setting a standard, as opposed to just following a path previously paved. You'll feel it in the way the lightweight ASF® aluminum construction, quattro® all-wheel drive and available sport differential work together for dynamic handling, and even in the smaller touches, like a power trunk lid with hands-free release or power soft-closing doors. Grand and small, these components help make for a dynamic luxury performance vehicle that you'll feel every time you get behind the wheel.



### Full LED headlights

All A8 models feature standard full LED headlights that form a distinctive horizontal line that accentuates the width of the vehicle and provides daylight-like illumination. Add to that an LED daytime running light signature that forms a precise outline, creating a brilliant, and unmistakable, combination.



2016 Audi A8 L 4.0T Sport shown with Velvet Beige leather and available equipment.

## A wealth of richness.

The hallmarks of Audi interiors are craftsmanship and intelligent spatial design. From the moment you step into an Audi A8, you will become aware of the meticulous attention to detail and the thoughtful ingenuity of the arrangement, starting with the wraparound curve of the dashboard that spans the entire driving environment. Once seated, you'll notice the high level of comfort that envelops you on all sides, brought about by such things as dual-pane acoustic glass, which helps reduce outside noise and helps regulate desired interior temperature, and the unique design of the gear selector, which allows your hand to rest while you operate the MMI® system. We anticipate and give comprehensive attention to your needs, transforming form to stylish function and beyond.

*Adding a touch of warmth and sophistication to an already regal interior are beautifully crafted decorative inlays. Available in numerous finishes, they ensure an interior space that speaks to your artistic sensibilities.*



### **Yacht throttle shifter**

With its ergonomics designed to be natural and intuitive, the gear selector in the A8 allows you to rest your wrist easily while engaging the MMI and adds another sophisticated touch to the interior of your A8.

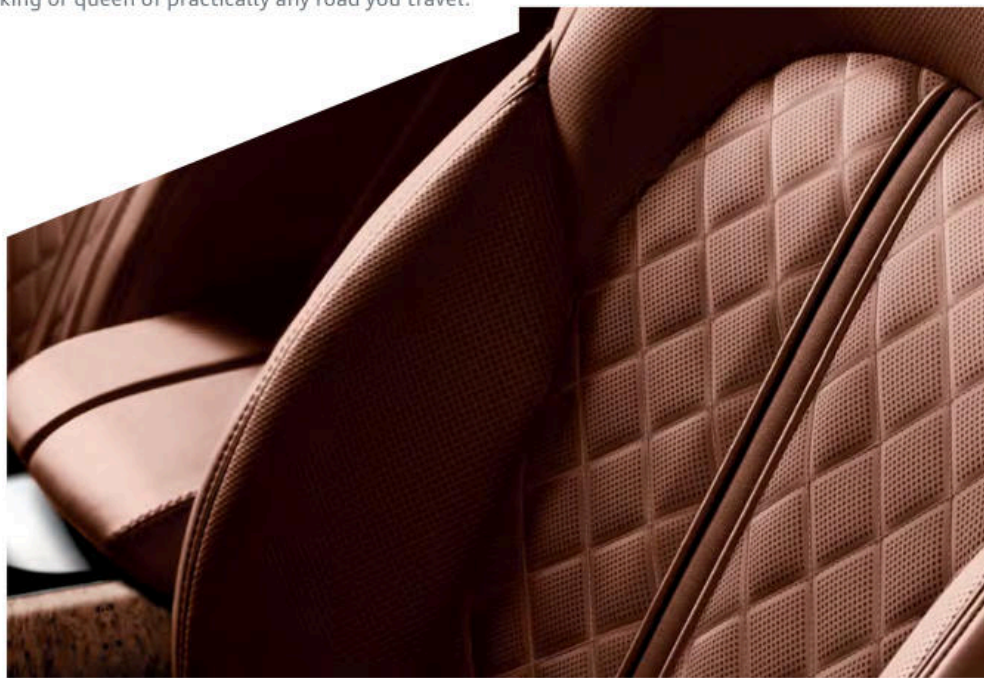
## Go ahead, take your throne.

It's no game; you've already captured the throne. The striking, driver-oriented cockpit and wraparound curve of the dashboard give you full authority over your surroundings. Control is at your fingertips with the multifunction leather-wrapped steering wheel. Available front seat ventilation will help cool you, and soothing massage features comfort you with the hand of luxury during long commutes. We think of these as more ways Audi ingenuity helps give you complete control, making you king or queen of practically any road you travel.



### 22-way comfort front seats

Adding to the plush interior of the Audi A8 is the available 22-way driver and front passenger comfort seats that offer lumbar support, ventilation and massage functions.



### Ventilated front seats with massage function

Available front seat ventilation offers multiple levels of cooling, while a customizable massage function helps soothe or invigorate the body during extended drives.

### Valcona leather with diamond stitching

This supple, premium leather, available with the Luxury package, captures the essence of Audi, and exemplifies the kind of materials and finish that show our commitment to luxury craftsmanship and our passion for performance.





*We've ensured that every stitch represents the detail that we put into every aspect of an Audi vehicle.*



2016 Audi A8 L W12 shown with Velvet Beige leather and available equipment.

## This time, it's okay to take a backseat.

You're the type who works hard and enjoys being the driver of success in your life. And what better way to celebrate that than to revel in the interior of the Audi A8 L W12 with the available Executive Rear Seat Comfort package? The ample interior of the A8 L includes thoughtful details, refined materials and overall sophistication that define your riding experience, whether viewed from side to side or front to rear. For even more luxury per mile, you can immerse yourself in the available Rear Seat Entertainment system while you soak up the sun or stars with an available panoramic sunroof, creating a first-rate atmosphere from practically any vantage point.



### Panoramic sunroof

The available two-panel panoramic sunroof offers both the front and rear passengers a nearly unobstructed view overhead while flooding the cabin with natural light. And when you decide you need to say goodbye to the sun, the power sunshades are there to make it an easy task.



### Rear Seat Entertainment

With vibrant dual 10" screens, the available Rear Seat Entertainment system can display a wealth of media choices and information, including navigation. Each rear seat occupant can access their own media controls located on the center armrest.

# A showcase of our driving desire for superior engineering.

It should be apparent from our drivetrain options that we strive for engineering perfection. Whether you choose gasoline or diesel, you'll experience the kind of dynamic performance and efficiency people have come to expect of Audi.<sup>1</sup> And with an advanced transmission and the road-gripping capability of quattro<sup>®</sup> all-wheel drive applying all that power to the ground, it will feel as good as its engineering suggests.

POWER  
↓

## 3.0-liter TFSI<sup>®</sup> V6 engine

The 333-horsepower 3.0-liter TFSI V6 engine is paired with FSI<sup>®</sup> direct injection and a belt-driven supercharger that features a magnetic clutch for greater efficiency and counter-rotating four-vane rotors that force air on-demand through dual intercoolers at boosted pressures.<sup>1</sup> It is this combination of engineering achievements that allows for nearly instantaneous buildup of 325 lb-ft of torque directly off idle engine speeds.



## 4.0-liter TFSI V8 engine

The available 4.0-liter TFSI V8 engine boasts 450 horsepower and delivers a relentless 444 lb-ft of torque across nearly the entire rpm range. Power aside, this engine also helps enhance fuel efficiency through the use of cylinder on demand<sup>™</sup> technology.<sup>1</sup> To further enhance this engine, active noise cancellation helps ensure that drivers do not hear any excess engine noise or vibration, helping to create a quiet, powerful ride.



## TDI<sup>®</sup> clean diesel engine

With 240 hp and 428 lb-ft of torque on tap, the available 3.0-liter TDI<sup>®</sup> clean diesel engine's elasticity in the passing lane is almost as impressive as its ability to take on even the longest road trips. And with features like AdBlue<sup>®</sup> exhaust after-treatment helping to make every journey a little cleaner, this is a performance win for all sides.



## 6.3-liter FSI<sup>®</sup> W12 engine

The available 6.3-liter W12 engine with FSI<sup>®</sup> direct injection produces 500 hp and 463 lb-ft of torque. As the pinnacle of what is possible with engine design, this twelve-cylinder powerhouse has a compact layout in "W," or offset cylinder, formation, making it one of the only vehicles in its class offered with an all-wheel-drive system. It also features innovative cylinder on demand engine efficiency programming for increased fuel savings when full power isn't required.<sup>1</sup>



*There is more information on the TDI<sup>®</sup> clean diesel model line in the TDI<sup>®</sup> clean diesel brochure. For details, see your dealer, go to [audiusa.com](http://audiusa.com) or download the digital brochure from the Audi library app.*

**quattro® all-wheel drive**

There is a reason quattro® has been known as the all-wheel-drive standard since its inception—it has helped us to win races all over the world, and lots of them. But it's not just a performance enhancing technology, it has also become the proven foul-weather friend. Under normal driving conditions, the center differential splits torque at a ratio of 40:60, front to rear (helping maximize performance on dry roads), but, as conditions change and become more challenging, the ratio is optimized to help maximize grip. This translates to traction and a more confident driving experience.

**Sport differential**

The available Dynamic package includes the quattro® sport differential that mechanically varies torque between the rear wheels to help enhance agility when cornering.

**Torque vectoring**

It's a handling feature so quick that it seems to respond to your impulses instead of your steering input. An evolution of cross-axle lock, this system works within quattro® all-wheel drive, utilizing ESC and ABS to help sense traction loss from the inside cornering tire.

**Audi drive select**

At Audi, we believe you should be the ultimate master of your road-going domain. That's why we created the Audi drive select system. It gives you the ability to adjust the vehicle's steering, throttle response, transmission shift characteristics, suspension and the available sport differential and dynamic steering control, if so equipped. And with four modes to choose from, when almost any kind of road comes into question, Audi drive select will let you answer.

**► Comfort mode**

*Perfect for those long highway stretches, this setting adds lighter steering, suspension and a closer shift pattern to help provide a more relaxed drive.*

**► Dynamic mode**

*Heavier steering, a firm suspension and a more responsive throttle give this setting an aggressive feel and focused performance.*

**► Auto mode**

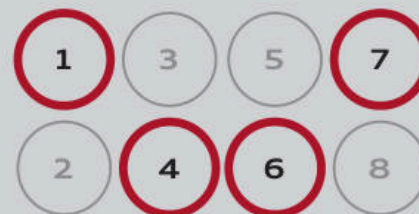
*The best of both worlds, dialed to automatically adjust settings for a seamless combination of comfort and responsiveness based on your driving style and road conditions.*

**► Individual mode**

*Take the turn your way—this mode allows you to adjust the steering, suspension, throttle and transmission upshifts to your style.*

**cylinder on demand™**

4.0T and W12 models feature cylinder on demand engine efficiency technology that helps make your exciting driving experience more efficient. When they're not needed, half of the cylinders stop firing, to help save fuel, and seamlessly reignite when the drive requires all eight or twelve.<sup>1</sup>

**Start-stop efficiency system<sup>1</sup>**

Under certain driving conditions, the A8 3.0T, TDI® and 4.0T model's engine will shut off when the vehicle is stopped. The engine will restart before you fully take your foot off the brake or if other critical vehicle systems require it, so your performance is not hindered.<sup>1</sup>



# Embodying the essence of performance.

For Audi engineers, power delivery is a primal thing. Sure, we sweat over balance, we obsess over precise handling, we shave off ounces and even pounds where we can to produce an improved response, quick acceleration and dynamic cornering, but in our hearts, at Audi, we want performance that inspires confidence. We have a heritage of racing success—and that helps us make the case—but it's a truer testament of engineering to make it work on the street, the highway, the commute. To engineer those moments where the rest of the vehicle seems to disappear and you are well into the moment of exhilaration, the light turns green, you accelerate. Performance—sculpted, engineered, Audi performance—makes its own case for the greatness of your vehicle.<sup>1</sup>



# S8

*Aluminum-optic blades integrated into the lower front bumper, Aluminum-optic exterior side mirror housings and Platinum Gray Singleframe® grille assert our intentions.*



## Driven to distinction.

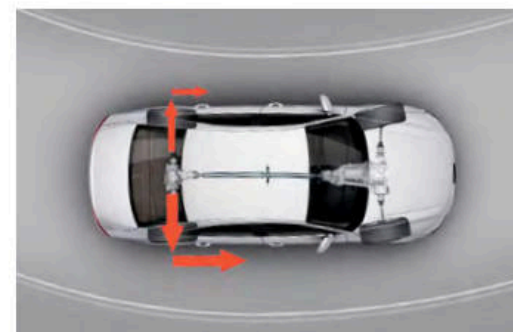
There are some who think that a luxury performance vehicle should radiate a certain level of flamboyance. This car was not built for those people. The Audi S8 takes sport performance to a new level, providing power with a whole lot of poise. A 4.0-liter TFSI® V8 engine delivers an incredible 520 hp and 481 lb-ft of torque to the ingenious fuel-saving cylinder on demand™ engine efficiency technology<sup>1</sup>. With the dramatic driving characteristics made possible by variable-ratio dynamic steering and quattro® all-wheel drive with sport differential, the S8 invites you to become part of an exclusive group of drivers who understand that incredible power and performance can come in incredibly illustrious packages.



> 4.0-liter turbocharged TFSI® V8 engine

> 520 hp/481 lb-ft torque

> 0-60 mph in 3.9 seconds



### Sport differential

To help ensure high cornering stability, the sport differential uses torque vectoring, and then adds to that by mechanically applying additional torque to the outside rear-cornering wheel. Through an electrohydraulic multi-plate clutch pack and gear-set, the outside rear cornering wheel's speed is increased by as much as 10%.



1. Always pay careful attention to the road, and do not drive while distracted. The features and technologies discussed above are optional, may require an additional subscription with separate terms and conditions, and should be used only when it is safe and appropriate. The Wi-Fi® hotspot feature is intended for passenger use only.

# S8

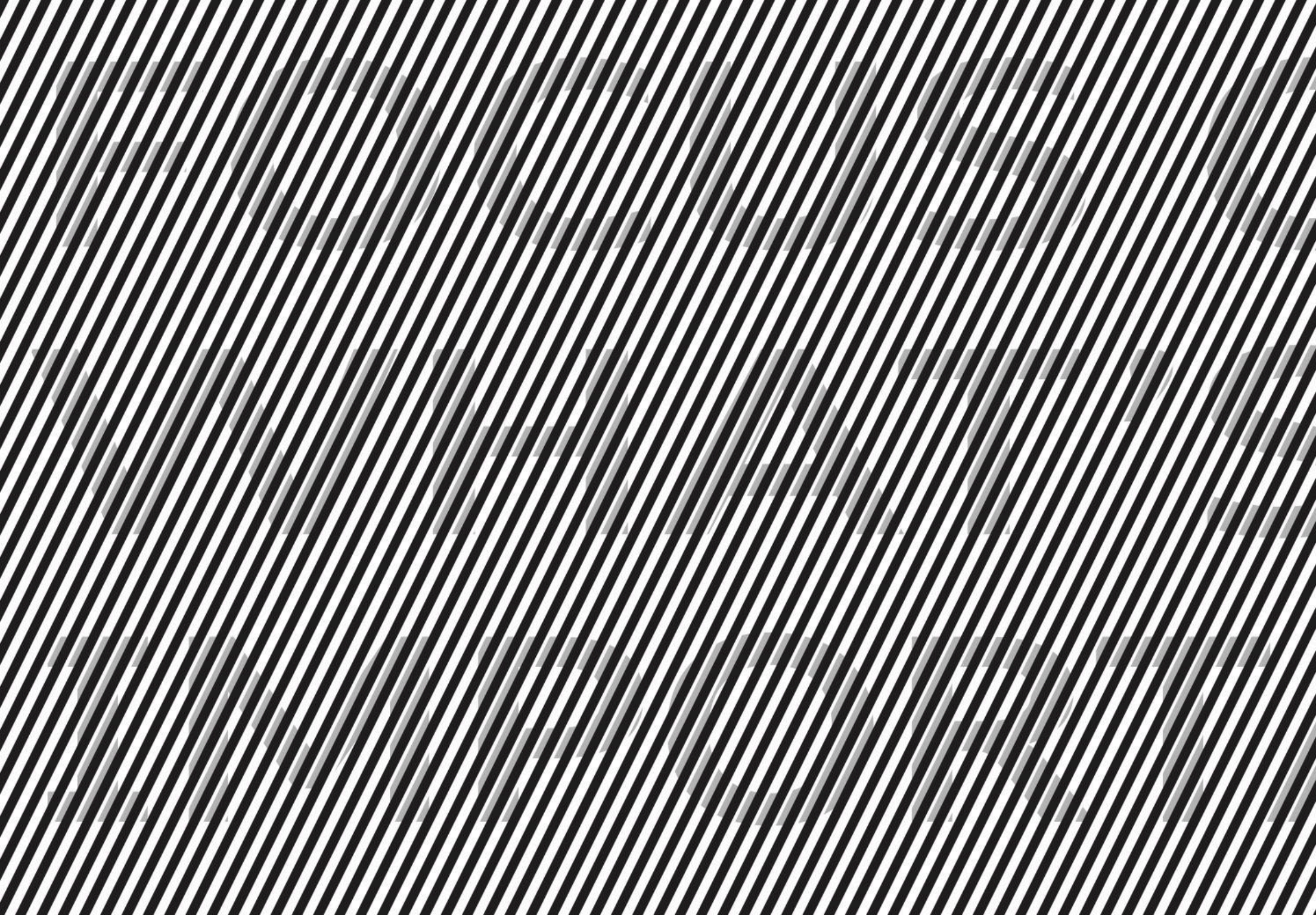
## The inconspicuous way to drive in the fast lane.

To truly set a new standard of luxury performance, you need luxury and performance to be equally unmistakable. Sumptuous 22-way sport comfort seats with Valcona leather and diamond stitching enthrall the driver and front passenger, while the Alcantara® headliner and available Vermont Brown Audi design selection with Carbon Twill, Copper decorative inlays add to its Audi performance character. By the time you've discovered the unparalleled convenience of MMI® touch and Audi connect® with Google Earth™ satellite imagery, you've found a sanctuary for your soul as much as a thrill for your right foot!¹



### Decorative inlays and shift paddles

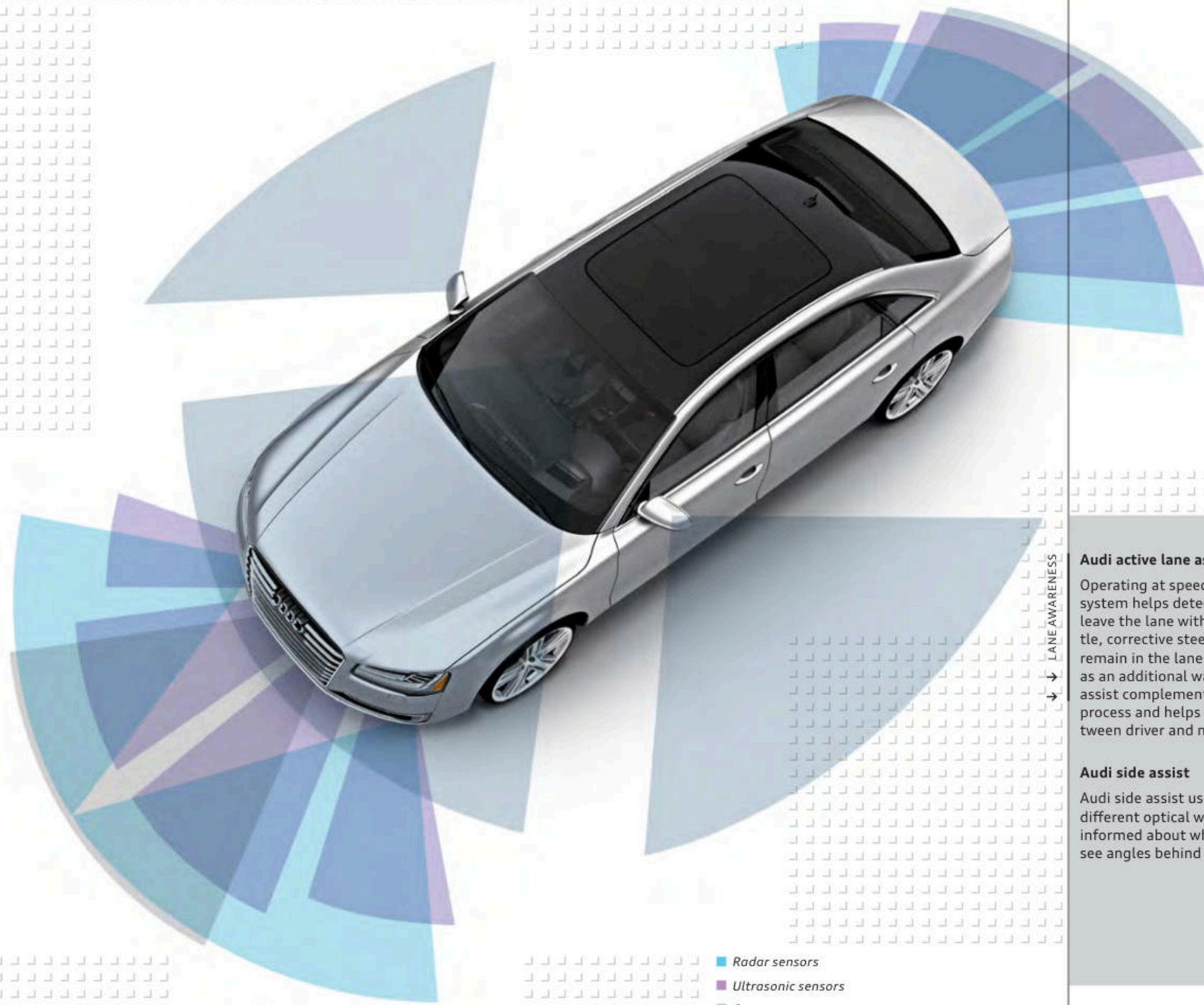
The Audi S8 features two-piece inlays tailored to the interior that appear on the dashboard, door trim and center console. The redesigned, larger, easier-to-grip shift paddles on the S8 help allow for quicker, seamless access, perfect for drivers who prefer a sporting driving style.





**You might be missing something, but we won't.**

With everything that's out there, we thought it was time to focus on what you really need to see—like that car in your blind spot, for example. Fortunately, there's a full suite of available Audi technologies that help take into account other vehicles as well as yours via intelligent driver assistance systems. These can help you focus on what's most important—the road.



LANE AWARENESS

#### **Audi active lane assist**

Operating at speeds above 38 mph, this available system helps detect when the vehicle begins to leave the lane without signaling. Then, through gentle, corrective steering efforts, it helps the vehicle remain in the lane and vibrates the steering wheel as an additional warning. This way, Audi active lane assist complements the driver's decision-making process and helps to further solidify the bond between driver and machine.<sup>1</sup>

#### **Audi side assist**

Audi side assist uses radar sensors and two different optical warnings to help keep the driver informed about what is approaching from hard-to-see angles behind and to the side of the vehicle.<sup>1</sup>

- Radar sensors
- Ultrasonic sensors
- Cameras

Image featured is just a pictorial and not an exact representation of the trajectory of the cameras and sensors.

# Senses working overtime.

There's only so much our nervous system can process at one time. Too much, and you'll feel the debilitating effects of sensory overload. We set out to combat this effect with driver assistance features designed to lighten the sensory load. Whether it's available advanced technologies like night vision assistant, which uses infrared technology to help detect pedestrians and large animals, or Audi side assist<sup>1</sup> which utilizes radar sensors to help inform you of vehicles approaching from the rear, you'll find that we've developed them to work together to help keep you aware of your surroundings. It's just another way we like to say "We're looking out for you."

↓ ↓ SITUATIONAL AWARENESS

## Head-up display

With easy-to-view, accurate visual information right at eye level, this available feature displays important driving information and even pedestrian-detection warnings when equipped with the optional night vision assistant.



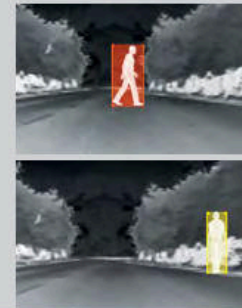
## Top and corner view cameras

Four cameras on this available technology allow for an overhead view of your surrounding, making parking just a little easier. The technology shows you where your vehicle is in relation to obstacles nearby, helping give you the confidence to maneuver in practically any environment.



## Night vision assistant

Using infrared technology to detect what lies ahead, this available feature uses thermal-imaging technology to help you detect trouble. Pedestrians and large animals up to 300 feet in front of the vehicle can be highlighted, while objects over 900 feet ahead can be detected—all shown on the 7" color driver information system.



↓ ↓ SEMI-AUTOMATION

## Audi pre sense® plus

The available Audi pre sense plus offers comprehensive driving assistance, with sensors in the front, side and rear. After visual, physical and aural collision warnings, there are four distinct phases for automatic preparation for the unavoidable: an upsurge of brake pressure, safety belt pre-tensioning, partial braking, and sunroof and window preparation. In severe cases, Audi pre sense plus will engage full braking and deceleration!<sup>1</sup>

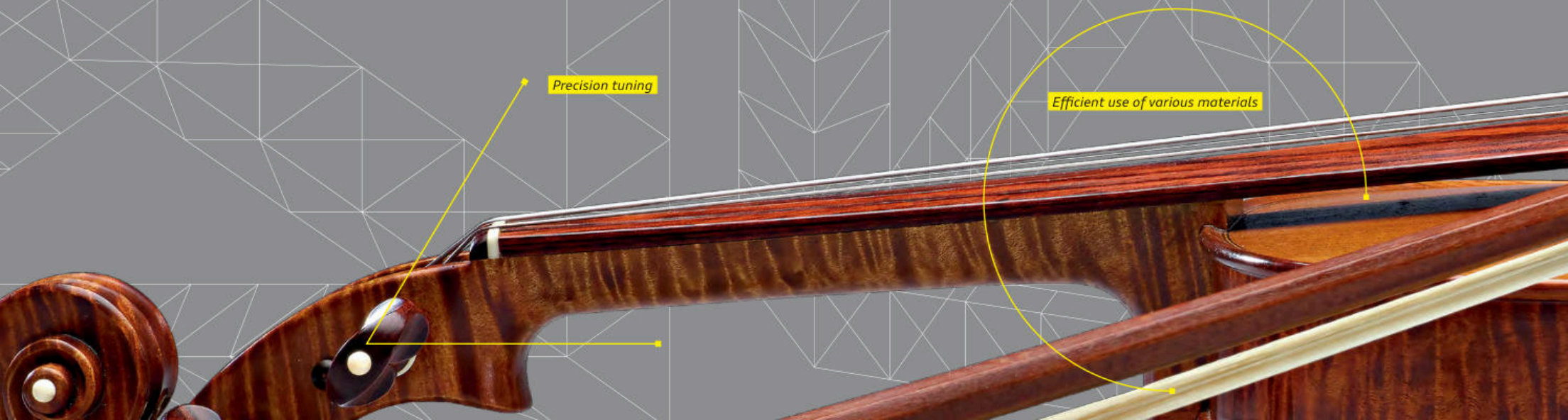
## Audi adaptive cruise control with stop & go

Using long-range radar and a camera, the available Audi adaptive cruise control with stop & go helps read the traffic conditions and adjusts the speed, helping to bring the vehicle to a full stop before accelerating when traffic flow resumes.

<sup>1</sup> The features discussed are not substitutes for attentive driving. Always check surrounding traffic, and use turn signals. Please see your owner's manual for further details and important limitations.

# When the right materials strike a perfect chord.

At the heart of every great performance is an equally powerful instrument. Lightweight yet strong, a violin embodies many of the qualities that make up our core engineering philosophy. Whether it's the way we bind different metals together to help form a more rigid connection or the way we shape our design for functionality and performance or even the way our crumple zones give in the right places to help dissipate energy, the similarities are present for a reason. You can't expect to perform at the highest level without a solid foundation.



Precision tuning

Efficient use of various materials



Optimal tension

Structural balance

Enduring craftsmanship

## A design that can diminish an impact is no accident.

While we don't like to make light of potential risks on the road, our engineers were tasked with doing just that. Considered a revolutionary technology, the Audi A8 model's ASF® aluminum construction developed by Audi engineers is at the same time lightweight and resilient, offering an innovative approach to both weight savings and strength. And while you may not think about weight savings when it comes to strength, we think they go hand in hand. Complementing the advanced occupant safety cell is airbag technology designed to respond differently based on seat position and specially constructed crumple zones that give way upon impact to help mitigate potential injury in a collision. When you add all of this to the rigidity of laser seam-welded joints that enhance the strength of every Audi we make, it becomes pretty clear: helping diminish the impact of an unavoidable event doesn't happen by accident.

### ABS and ESC

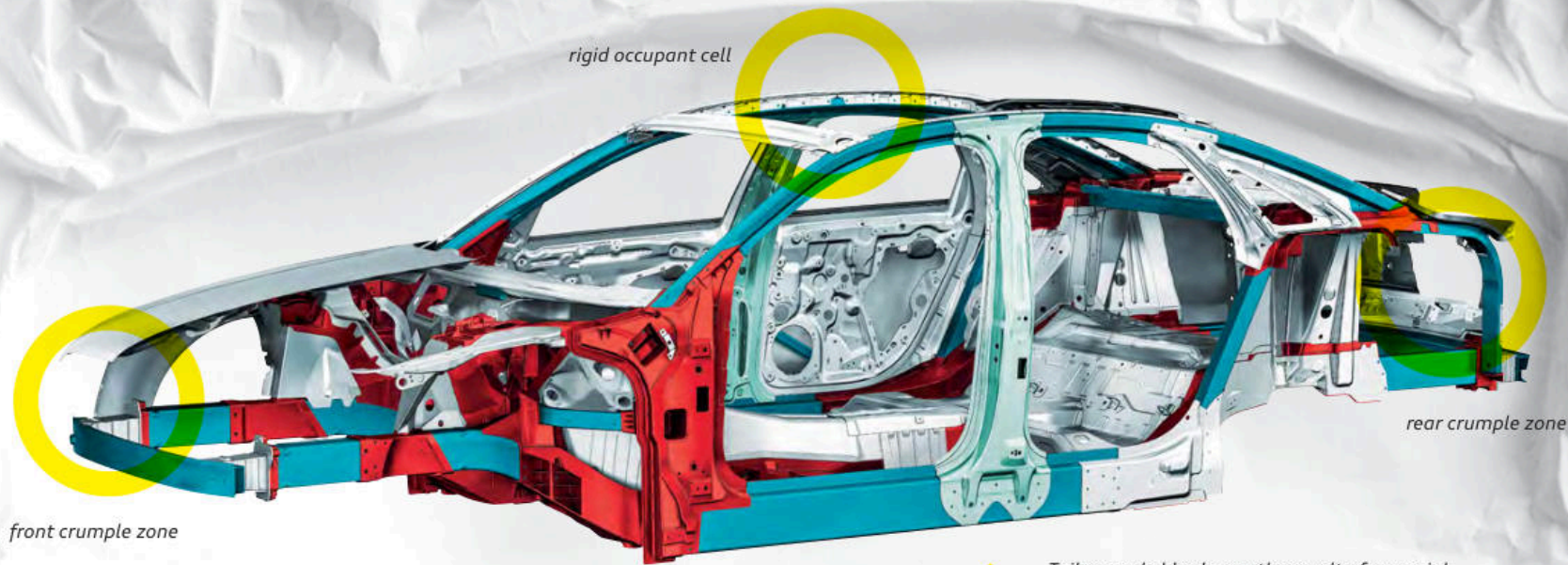
Computerized technology that works in sync with the Anti-lock Brake System (ABS), Electronic Stability Control (ESC) helps minimize loss of stability, applying brake pressure to individual wheels and reducing throttle input to help counter oversteer or understeer when the vehicle needs it.



### Ten airbags

The A8 is equipped with a full complement of ten standard airbags to offer additional protection in the event of a collision. Front-impact airbags for both driver and front passenger are designed to specifically target and protect the head during collisions, for added protection. And as a comprehensive safety measure, our airbags are designed to work in concert with our safety belts and properly-adjusted head restraints.<sup>1</sup>

<sup>1</sup> Airbags are supplemental restraints only and will not deploy in all crash circumstances. Always use safety belts and refer to your owner's manual for the proper use of the restraint systems when transporting children.



rigid occupant cell

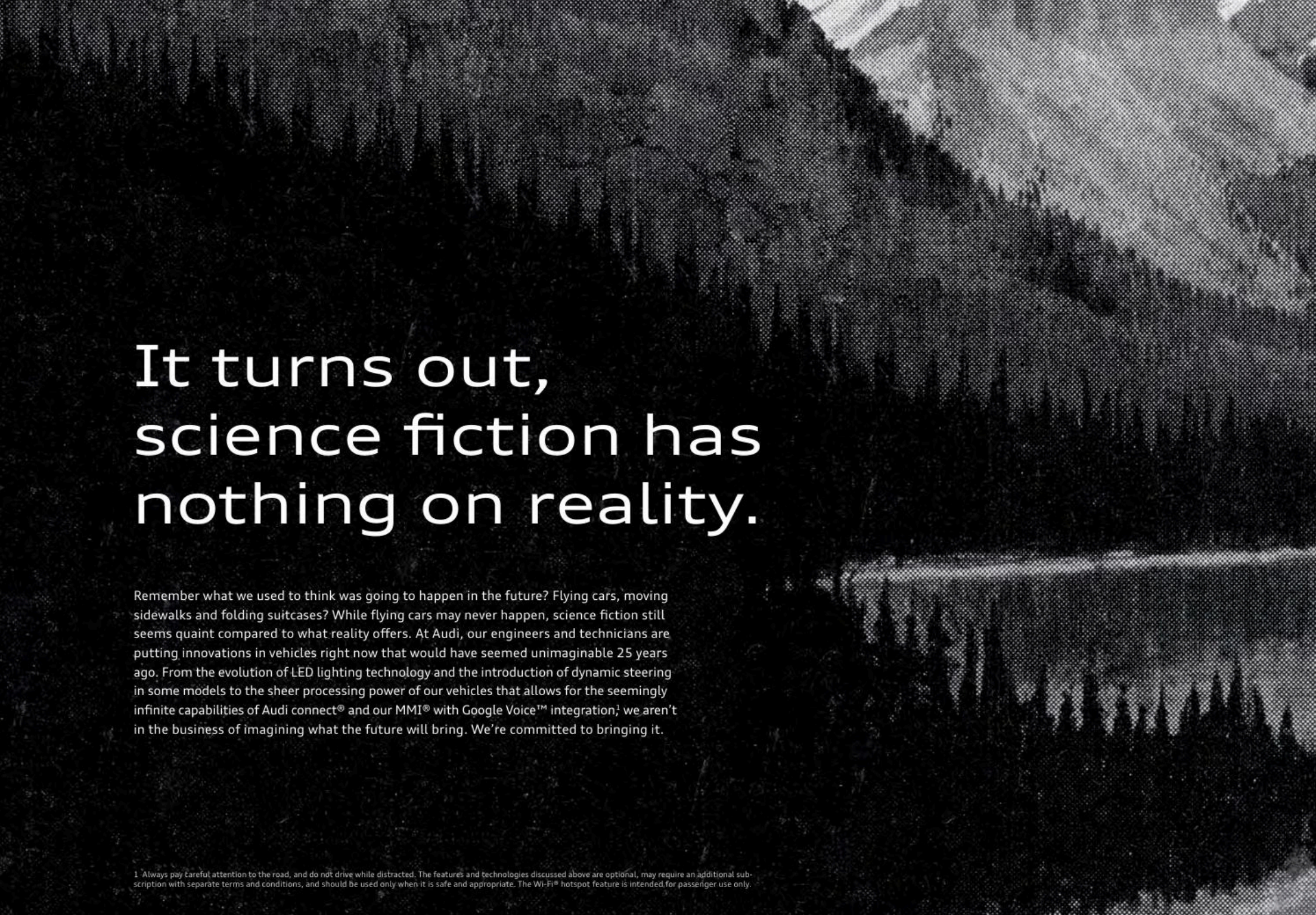
front crumple zone

rear crumple zone



Tailor-made blanks are the result of a special manufacturing process that can help strengthen the upper zone of the B-pillars, while the lower zone is designed to help mitigate the impact in the event of a side collision.

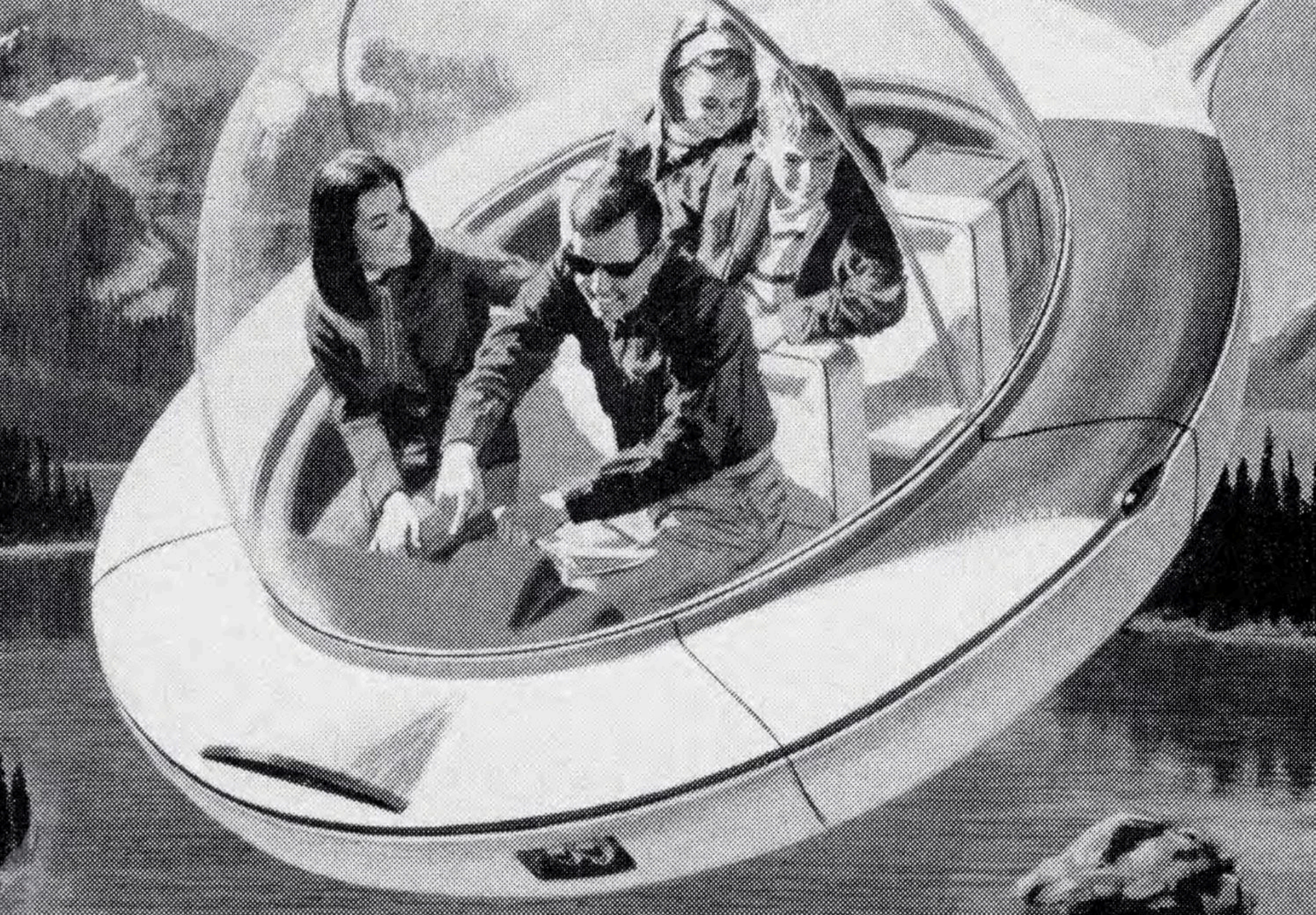
- extruded aluminum sections
- cast aluminum
- ultra-high-strength steel
- sheet aluminum

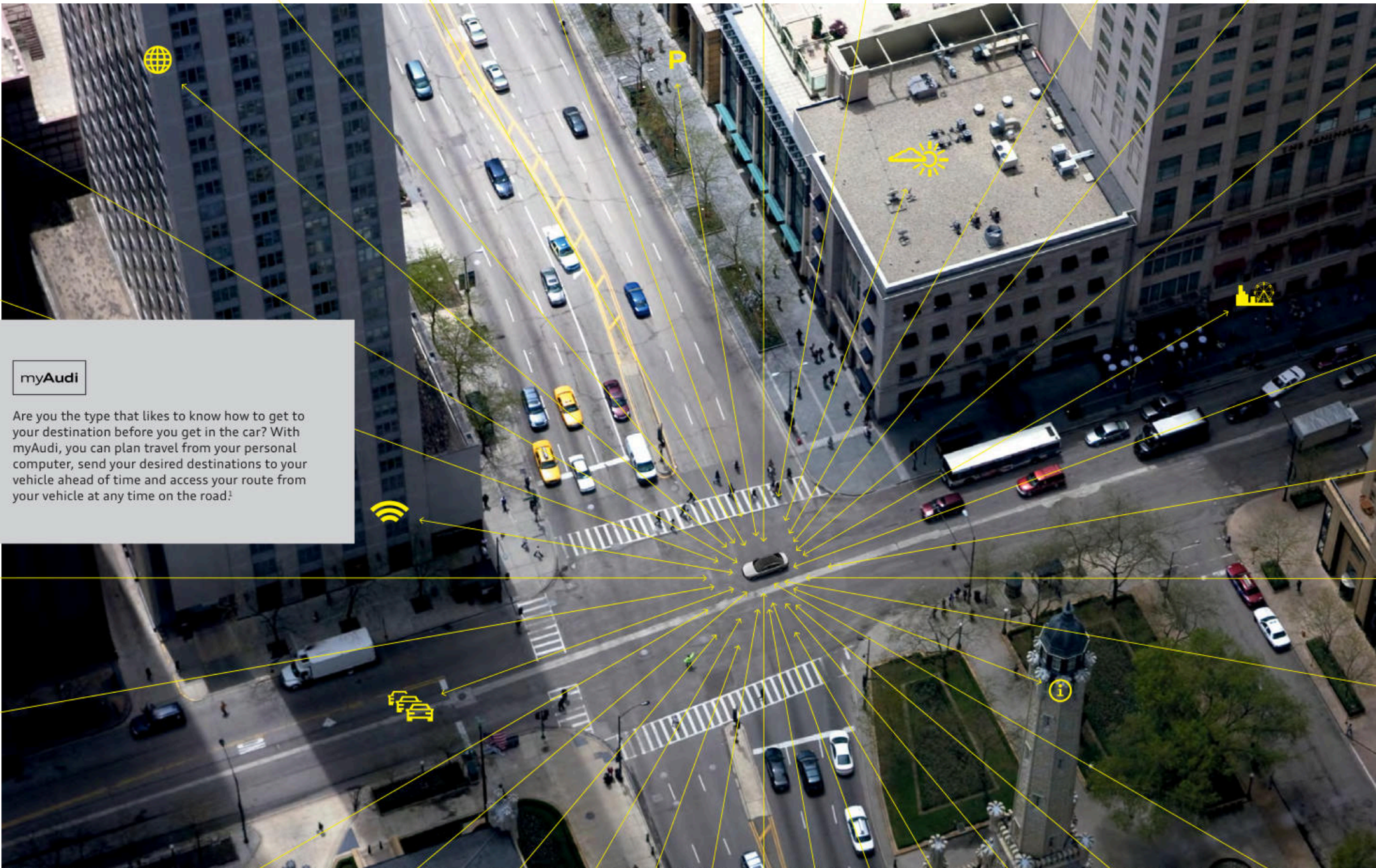


# It turns out, science fiction has nothing on reality.

Remember what we used to think was going to happen in the future? Flying cars, moving sidewalks and folding suitcases? While flying cars may never happen, science fiction still seems quaint compared to what reality offers. At Audi, our engineers and technicians are putting innovations in vehicles right now that would have seemed unimaginable 25 years ago. From the evolution of LED lighting technology and the introduction of dynamic steering in some models to the sheer processing power of our vehicles that allows for the seemingly infinite capabilities of Audi connect® and our MMI® with Google Voice™ integration,<sup>1</sup> we aren't in the business of imagining what the future will bring. We're committed to bringing it.

<sup>1</sup> Always pay careful attention to the road, and do not drive while distracted. The features and technologies discussed above are optional, may require an additional subscription with separate terms and conditions, and should be used only when it is safe and appropriate. The Wi-Fi® hotspot feature is intended for passenger use only.

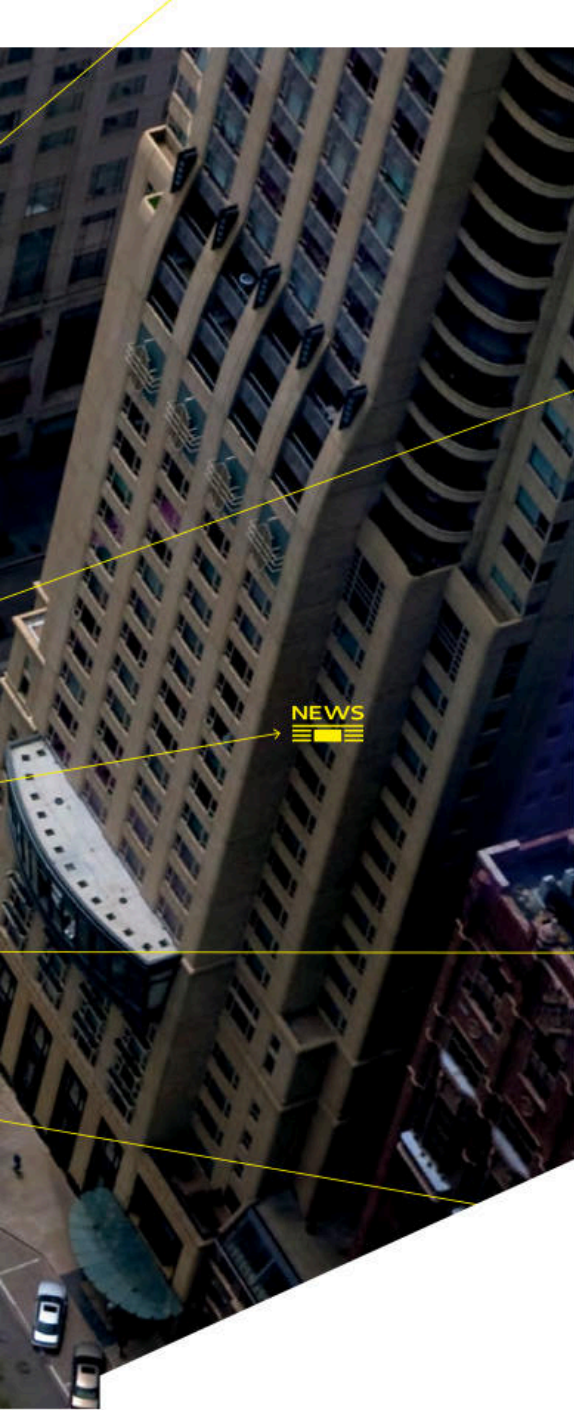




myAudi

Are you the type that likes to know how to get to your destination before you get in the car? With myAudi, you can plan travel from your personal computer, send your desired destinations to your vehicle ahead of time and access your route from your vehicle at any time on the road!

1 Always pay careful attention to the road, and do not drive while distracted. The features and technologies discussed above are optional, may require an additional subscription with separate terms and conditions, and should be used only when it is safe and appropriate. The Wi-Fi® hotspot feature is intended for passenger use only. 2 SiriusXM® Satellite Radio and SiriusXM® Traffic subscriptions are sold separately or as a package after trial period and are continuous until you call SiriusXM® to cancel. See Customer Agreement for complete terms and more information at [www.siriusxm.com](http://www.siriusxm.com). SiriusXM® Traffic service available in select markets. SiriusXM® U.S. Satellite Service available only to those in the 48 contiguous U.S.A., D.C. and Puerto Rico (with coverage limitations). 3 MMI® navigation plus depends on signals from the worldwide Global Positioning Satellite network. The vehicle's electrical system and existing wireless and satellite technologies must be available and operating properly for the system to function. The system is designed to provide you with suggested routes in locating addresses, destinations and other points of interest. Changes in street names, construction zones, traffic flow, points of interest and other road system changes are beyond the control of Audi of America, Inc. Complete detailed mapping of lanes, roads, streets, toll roads, highways, etc., is not possible, therefore you may encounter discrepancies between the mapping and your actual location. Please rely on your individual judgment in determining whether or not to follow a suggested MMI® navigation plus route. For mapping updates please see your Audi dealer or call 1-800-FOR-AUDI for details. 4 Parking feature is not available everywhere and requires participation by parking provider.



# Your central command for the information age.

Sure, the handheld power of smartphones is impressive, but they don't handle like your Audi. Luckily, with Audi connect®, you can get nearly all of the functionality of your phone, with the means to get you where you want to go.<sup>1</sup> Need to find a new, highly acclaimed restaurant? Pull over, and with the help of Google Voice Search™, Audi connect allows you to quickly search Google™ by simple voice commands. Looking for something to do in a new city? Get information about current events and directions to their locations. With a crisp display, a quick connection and easy access to steering wheel toggle controls, you have a smartcar, which can do even more than the computer in your pocket.

## MOBILITY



Get SiriusXM® Traffic information overlaid onto available 3D satellite imagery to visualize a true aerial view of your route, and let the MMI® navigation plus system reconfigure your route to help avoid traffic.<sup>1,2,3</sup>



With Google Earth™ integration, you'll enjoy 3D satellite imagery, including Google Street View™, displayed right on the MMI display.<sup>1</sup>



With Google Street View™, your Audi can show you a driver's-eye view of your destination right before you arrive so it's easy to recognize.<sup>1</sup>



Search for parking in your area of interest, check space availability and set your selection as a destination to help navigate directly to the garage entrance.<sup>1,4</sup>

## TECHNOLOGY



It's simple. Tell your Audi what you are in the mood for, then let the cloud-processing power of Google™ speech recognition interpret your request and bring up a list of destinations in the area of your choice.<sup>1</sup>



Staying connected in your Audi has never been easier. Access is provided for up to eight passenger devices through an onboard Wi-Fi® hotspot.<sup>1</sup>



The point-of-interest search with voice control means that you can get the most out of every journey.<sup>1</sup>

## INFORMATION



Get information about current events, exciting locations and places of interest at your travel destination, current location or other chosen location instantly.<sup>1</sup>



Stay on top of the news by having headlines and stories delivered right to your MMI display.<sup>1</sup>



With current local weather conditions and forecasts for your destination, you'll always be prepared for your trip.<sup>1</sup>



Discover travel information for local landmarks in your area of interest, set them as your destinations and let your vehicle lead the way as you explore the world around you.<sup>1</sup>

## Redefining the all-access pass.

Going backstage just got a lot more immersive, and intuitive. The intelligent MMI® system offers a wealth of easily accessible information with a unique twist, or, technically, a touch. Considered a revolution in intelligent simplicity, MMI touch with handwriting recognition is a technology that helps give you the ability to give commands and retrieve media with just a few simple strokes on the pad. You'll quickly have access to information such as music files, contact information and destinations. The possibilities are even bigger when you input to Audi connect®, an innovative infotainment system infused with the power of Google™ technology.<sup>1</sup> With this kind of access, you could say there is no greater stage.



### MMI touch

Developed by the Audi Human Machine Interface (HMI) team, MMI touch illustrates why making something simple to use can be so complex. The HMI team designed a system so advanced, it can read almost anyone's handwriting — even if you choose to write with your non-dominant hand.

### Audi media

The media function opens up a world of options with the MMI navigation plus, allowing you to control the Audi music interface, Secure Digital (SD) card slots, hard disk drive (HDD) audio jukebox or DVD, and BLUETOOTH® streaming audio from a compatible device.<sup>2</sup>

### SiriusXM® Satellite Radio

Go ahead. Crisscross the country. We assure you, you'll never run out of entertainment options, with over 150 channels of music, talk, sports and news.<sup>2</sup>

### MMI navigation plus

Count on the advanced navigation system to help home in on your destination with stunning precision while putting a little more depth in your journey with help from Google Earth™.<sup>2</sup>

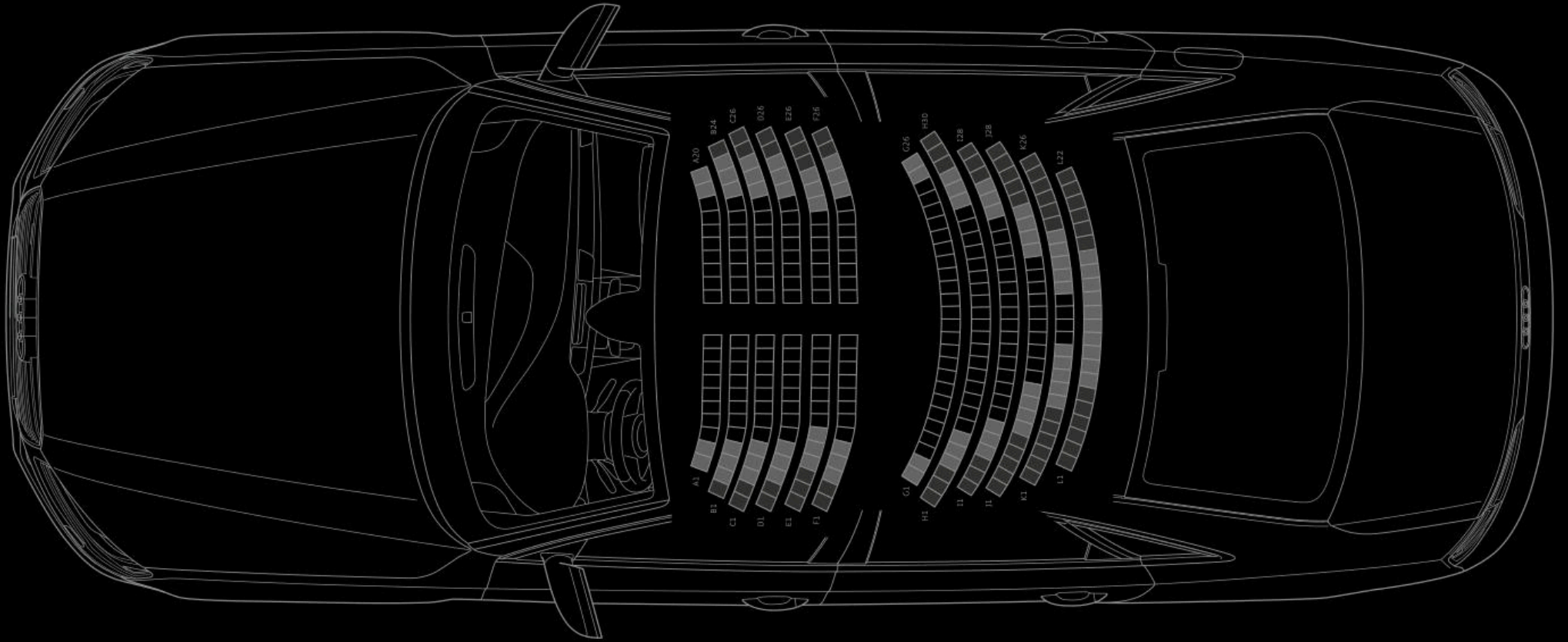
### BLUETOOTH® wireless technology

Unlock your compatible mobile phone's potential through the MMI system. Simply pair them up and start enjoying near complete control at the touch of a button.<sup>2</sup>

<sup>1</sup> Always pay careful attention to the road, and do not drive while distracted. The features and technologies discussed above are optional, may require an additional subscription with separate terms and conditions, and should be used only when it is safe and appropriate. The Wi-Fi® hotspot feature is intended for passenger use only. <sup>2</sup> See pages 42–45 for important information regarding Audi connect®, MMI® navigation plus, required compatible phones and devices and required SiriusXM® subscriptions.

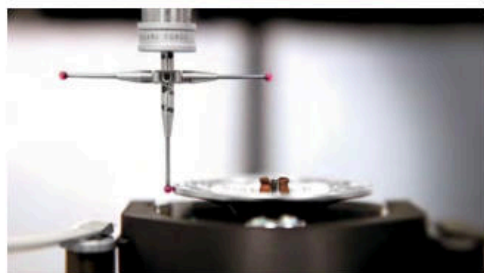
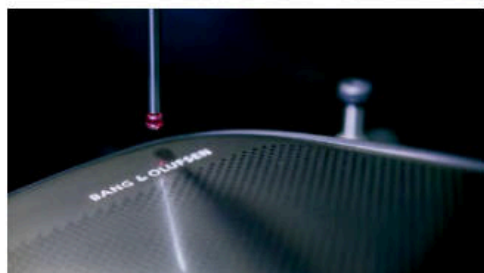
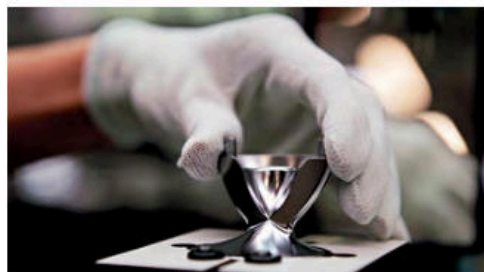


Orchestrate a more thrilling drive.





*Over 400 hours of sound tuning  
Tested 54,000 times  
at speeds up to 155 mph*



When we set out to compose the most advanced sound system we've ever assembled, we didn't just want you to *hear* every note. We wanted you to *experience* them. From perfectly sculpted high notes to a crystal clear mid-range to deep-diving lows, the standard BOSE® and available Bang & Olufsen® Advanced Sound System deliver a perfect arrangement of thrilling sound that you can feel as much as hear. So whether you're in the mood to be soothed, engaged or inspired, you can expect an immersive experience that can only be matched by the exhilaration of driving your Audi.

#### **Bang & Olufsen® Advanced Sound System**

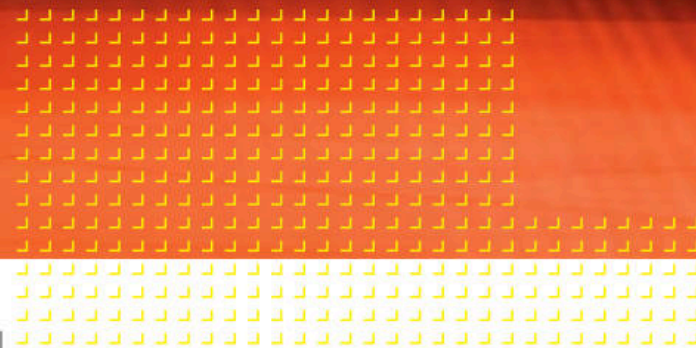
The passion of Bang & Olufsen® matches well with Audi. Just consider the remarkable available Bang & Olufsen® Advanced Sound System. A synthesis of design and performance, it has become the symbol of acoustic perfection. Bang & Olufsen® engineers help to craft meticulously rendered sound through 19 speakers (including two innovative retractable aluminum acoustic lenses) and an impressive 1,400 watts through the sealed speaker cabinets and ICEpower® amplifiers.

#### **BOSE® Surround Sound System**

Hitting the right note on every drive, the BOSE® Surround Sound System turns your Audi into a 14-speaker powerhouse with the help of innovative sound engineering and optimized speaker placement. Add to that AudioPilot® noise compensation, which helps maintain a consistent volume under varying speeds and road conditions, and you get an acoustic listening environment that rivals any live performance.

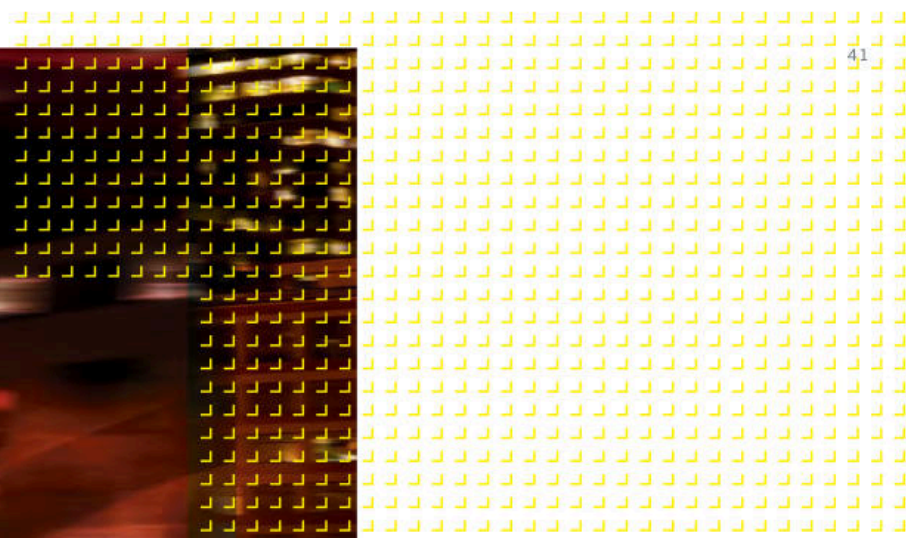


2016 Audi A8 L 4.0T Sport shown in Florett Silver metallic with available equipment.





*The boldly sophisticated A8 commands attention in any environment—a true testament to inspiring design.*



## A8 L 3.0T/TDI®



### A8 L 3.0T/TDI® Featured highlights

#### Engineering/Performance 3.0T

- > 3.0-liter TFSI® supercharged V6
- > 333 hp/325 lb-ft torque
- > Acceleration (0–60 mph) in 5.5 seconds

#### Engineering/Performance TDI®

- > 3.0-liter TDI® clean diesel V6
- > 240 hp/428 lb-ft torque
- > Acceleration (0–60 mph) in 6.3 seconds

#### Exterior

- > 19" 15-spoke design wheels with 255/45 all-season tires<sup>1</sup>
- > Full LED headlights
- > Power-adjustable, power-folding, auto-dimming, heated exterior side mirrors with memory
- > Power soft-closing doors
- > Power trunk with hands-free release

#### Interior/Seating

- > Four-zone automatic climate control
- > Dual-pane acoustic glass
- > Power rear side and rear window sunshades
- > Sunroof
- > Heated 18-way power front seats, including power lumbar adjustment and memory
- > Extended Leather package (includes airbag cap, center console, door armrests and pulls)

#### Infotainment/Technology

- > MMI® navigation plus with voice control system<sup>2</sup>
- > MMI® touch with handwriting-recognition technology
- > Audi connect® with six-month trial subscription<sup>3</sup>
- > 7" color driver information system
- > BOSE® Surround Sound System with 14 speakers, AudioPilot® noise-compensation and 630 watts
- > HD Radio™ Technology
- > BLUETOOTH® wireless technology preparation for compatible mobile phones
- > Audi advanced key—keyless start, stop and entry<sup>4</sup>
- > Parking system plus with rear view camera (front and rear acoustic parking sensors)

### A8 L 3.0T/TDI® Stand-alone options

- > 20" 10-spoke-star design wheels with 265/40 all-season tires<sup>1</sup>
- > 20" 10-parallel-spoke design wheels with 265/40 all-season tires<sup>1</sup>
- > Panoramic sunroof
- > Black Alcantara® headliner

### A8 L 3.0T/TDI® Available packages

#### Premium package

- > 22-way power front comfort seats, including power lumbar adjustment, ventilation, massage function and memory
- > Audi side assist<sup>5</sup> and Audi pre sense® rear<sup>5</sup>
- > Head-up display with navigation information
- > Top and corner view camera system

#### Luxury package

- > Valcona leather interior
- > Diamond stitching
- > Alcantara® headliner (color-coordinated with interior)

#### Cold Weather package

- > Heated steering wheel
- > Heated outboard rear seats
- > Rear-seat pass-through

#### Rear Seat Comfort package

- > Power outboard rear seats with power lumbar adjustment (five-passenger configuration)
- > Ventilated outboard rear seats with massage function
- > Front passenger seat power adjustment from rear seat

#### Driver Assistance package

- > Audi adaptive cruise control with stop & go
- > Audi active lane assist<sup>5</sup>
- > Audi pre sense® plus<sup>5</sup>
- > High-beam assistant

<sup>1</sup> High-performance tires are designed for better performance and handling in warm climates. When driving in cold, snowy or icy weather, you should equip your vehicle with four all-season or winter tires, which offer better traction under those conditions. We suggest you use the Audi-recommended winter or all-season tires specified for your Audi. High-performance tires also have a lower aspect ratio that aids performance and handling. Driving over rough or damaged road surfaces, as well as debris, curbs and other obstacles, can cause serious damage to wheels, tires, vehicle body and suspension parts. Be careful to avoid road hazards and reduce your speed, especially if your vehicle is equipped with low-profile tires. Please also remember when making your selection that, while these tires deliver responsive handling, they may ride less comfortably and make more noise than others. Finally, these tires may wear more quickly than other choices. It is important that the inflation pressure is regularly checked and maintained at recommended levels. <sup>2</sup> MMI® navigation plus depends on signals from the worldwide Global Positioning Satellite network. The vehicle's electrical system and existing wireless and satellite technologies must be available and operating properly for the system to function. The system is designed to provide you with suggested routes in locating addresses, destinations and other points of interest. Changes in street names, construction zones, traffic flow, points of interest and other road system changes are beyond the control of Audi of America, Inc. Complete

# A8 L 4.0T Sport



## A8 L 4.0T Sport Featured highlights

### Engineering/Performance

- > 4.0-liter TFSI® turbocharged V8
- > 450 hp/444 lb-ft torque
- > cylinder on demand™ engine efficiency technology<sup>6</sup>
- > Acceleration (0-60 mph) in 4.4 seconds

### Exterior

- > Audi Sport® 20" 5-double-spoke design wheels (Galvano Silver finish) with 265/40 all-season tires<sup>1</sup>
- > Sport exterior appearance
- > Full LED headlights
- > Power-adjustable, power-folding, auto-dimming, heated exterior side mirrors with memory
- > Power soft-closing doors
- > Power trunk with hands-free release

### Interior/Seating

- > Four-zone automatic climate control
- > Dual-pane acoustic glass
- > Power rear side and rear window sunshades
- > Alcantara® headliner (color-coordinated with interior)
- > Panoramic sunroof
- > Valcona leather interior
- > 22-way power front sport/comfort seats, including power lumbar adjustment, ventilation, massage function, memory and diamond stitching
- > Extended Leather Package (includes airbag cap, center console, door armrests and pulls)

### Infotainment/Technology

- > MMI® navigation plus with voice control system<sup>2</sup>
- > MMI® touch with handwriting-recognition technology
- > Audi connect® with six-month trial subscription<sup>3</sup>
- > BOSE® Surround Sound System with 14 speakers, AudioPilot® noise-compensation and 630 watts
- > BLUETOOTH® wireless technology preparation for compatible mobile phones
- > Audi advanced key—keyless start, stop and entry<sup>4</sup>
- > Audi side assist<sup>5</sup> and Audi pre sense® rear<sup>5</sup>
- > Head-up display with navigation information
- > Parking system plus with rear view camera (front and rear acoustic parking sensors)
- > Top and corner view camera system

## A8 L 4.0T Sport Stand-alone options

- > Audi Sport® 21" 5-arm-structure design wheels with 275/35 summer performance tires<sup>1</sup>
- > 20" 10-spoke-star design wheels with 265/40 all-season tires<sup>1</sup>
- > 20" 10-parallel-spoke design wheels with 265/40 all-season tires<sup>1</sup>
- > Black Alcantara® headliner
- > Rear Seat Entertainment system with dual 10" screens and DVD single slot
- > Bang & Olufsen® Advanced Sound System with 19 speakers and 1,400 watts
- > Night vision assistant with pedestrian and large animal detection

## A8 L 4.0T Sport Available packages

### Cold Weather package

- > Heated steering wheel
- > Heated outboard rear seats
- > Rear-seat pass-through

### Rear Seat Comfort package

- > Power outboard rear seats with power lumbar adjustment (five-passenger configuration)
- > Ventilated outboard rear seats with massage function
- > Front passenger seat power adjustment from rear seat

### Driver Assistance package

- > Audi adaptive cruise control with stop & go
- > Audi active lane assist<sup>5</sup>
- > Audi pre sense® plus<sup>5</sup>
- > High-beam assistant

### Dynamic package

- > quattro® sport differential
- > Dynamic steering

### Audi design selection, Balao Brown

- > Balao Brown Valcona leather seating with contrasting White stitching and piping (without diamond stitching)
- > Full Leather package
- > White Alcantara® headliner
- > Balsamic Brown Natural Fine Grain Ash Wood upper decorative inlays
- > Brushed Aluminum lower decorative inlays

detailed mapping of lanes, roads, streets, toll roads, highways, etc., is not possible, therefore you may encounter discrepancies between the mapping and your actual location. Please rely on your individual judgment in determining whether or not to follow a suggested MMI® navigation plus route. For mapping updates please see your Audi dealer or call 1-800-FOR-AUDI for details. <sup>3</sup> Always pay careful attention to the road, and do not drive while distracted. The features and technologies discussed above are optional, may require an additional subscription with separate terms and conditions, and should be used only when it is safe and appropriate. The Wi-Fi® hotspot feature is intended for passenger use only. <sup>4</sup> Some Audi models are equipped with a keyless ignition feature. The details as to how the system works can vary, and Audi owners should consult their owner's literature or an authorized Audi dealer if they have further questions about the operation of this feature. Please note that Audi warns against leaving the vehicle unattended with the engine running, particularly in enclosed spaces. <sup>5</sup> The features discussed are not substitutes for attentive driving. Always check surrounding traffic, and use turn signals. Please see your owner's manual for further details and important limitations. <sup>6</sup> See [www.fueleconomy.gov](http://www.fueleconomy.gov) for EPA estimates. Your mileage and emissions will vary and depend on several factors, including your driving habits and vehicle condition.

## A8 L W12



### A8 L W12 Featured highlights

#### Engineering/Performance

- > 6.3-liter FSI® W12
- > 500 hp/463 lb-ft torque
- > cylinder on demand™ engine efficiency programming<sup>1</sup>
- > Acceleration (0–60 mph) in 4.4 seconds

#### Transmission/Suspension/Chassis

- > Eight-speed Tiptronic® automatic transmission
- > Audi adaptive air suspension
- > 15.7" ventilated front disc/14.0" ventilated rear disc brakes
- > Dynamic steering

#### Exterior

- > 20" 15-spoke-structure design wheels (High-gloss finish) with 265/40 all-season tires<sup>2</sup>
- > Singleframe® grille with twin-bar design and diamond-mesh inserts
- > Full LED headlights
- > High-beam assistant
- > Power-adjustable, power-folding, auto-dimming, heated exterior side mirrors with memory
- > Power soft closing doors
- > Power trunk with hands-free release

#### Interior/Seating

- > Four-zone automatic climate control
- > Heated steering wheel
- > Power tilt and telescopic steering column
- > Illuminated door sill inlays (with W12 emblem)
- > Ambient LED interior lighting plus
- > Dual-pane acoustic glass
- > Power rear side and rear window sunshades
- > Panoramic sunroof
- > Alcantara® headliner (color-coordinated with interior)
- > Valcona leather interior
- > 22-way power front comfort seats, including power lumbar adjustment, ventilation, massage function and memory
- > Extended Leather Package (includes airbag cap, center console, door armrests and pulls)
- > Power outboard rear seats with power lumbar adjustment (four-passenger configuration with fixed center console)
- > Heated and ventilated outboard rear seats with massage function
- > Front and rear comfort headrests

#### Infotainment/Technology

- > MMI® navigation plus with voice control system<sup>3</sup>
- > MMI® touch with handwriting-recognition technology
- > Audi connect® with six-month trial subscription<sup>4</sup>
- > 7" color driver information system
- > BOSE® Surround Sound System with 14 speakers, AudioPilot® noise-compensation and 630 watts
- > Rear Seat Entertainment system with dual 10" screens and DVD single slot
- > BLUETOOTH® wireless technology preparation for compatible mobile phones
- > Audi advanced key—keyless start, stop and entry<sup>5</sup>
- > Audi side assist<sup>6</sup> and Audi pre sense® rear<sup>6</sup>
- > Head-up display with navigation information
- > Parking system plus with rear view camera (front and rear acoustic parking sensors)
- > Top and corner view camera system

### A8 L W12 Stand-alone options

- > 19" 15-spoke design wheels with 255/45 all-season tires<sup>2</sup>
- > 20" 10-parallel-spoke design wheels with 265/40 all-season tires<sup>2</sup>
- > Full Leather package
- > Black Alcantara® headliner
- > Five-passenger configuration (replaces fixed center console)
- > Bang & Olufsen® Advanced Sound System with 19 speakers and 1,400 watts
- > Night vision assistant with pedestrian and large animal detection

### A8 L W12 Available packages

#### W12 Driver Assistance package

- > Audi adaptive cruise control with stop & go
- > Audi active lane assist<sup>6</sup>
- > Audi pre sense® plus<sup>6</sup>

#### Executive Rear Seat Comfort package

- > Passenger-side rear relaxation seat with power footrest (eliminates front passenger seat massage function and limits front passenger seat to 10-way power adjustment)
- > Audi exclusive cool box in center pass-through (10.4-liter capacity, eliminates rear-seat pass-through)
- > 12-volt rear power outlet and 115-volt inverter

#### W12 Sport package

- > quattro® sport differential
- > Audi Sport® 20" 5-double-spoke design wheels (Galvano Silver finish) with 265/40 all-season tires<sup>2</sup>

#### Audi design selection, Balao Brown

- > Balao Brown Valcona leather seating with contrasting White stitching and piping
- > Full Leather package
- > White Alcantara® headliner
- > Balsamic Brown Natural Fine Grain Ash Wood upper decorative inlays
- > Brushed Aluminum lower decorative inlays

<sup>1</sup> See [www.fueleconomy.gov](http://www.fueleconomy.gov) for EPA estimates. Your mileage and emissions will vary and depend on several factors, including your driving habits and vehicle condition. <sup>2</sup> High-performance tires are designed for better performance and handling in warm climates. When driving in cold, snowy or icy weather, you should equip your vehicle with four all-season or winter tires, which offer better traction under those conditions. We suggest you use the Audi-recommended winter or all-season tires specified for your Audi. High-performance tires also have a lower aspect ratio that aids performance and handling. Driving over rough or damaged road surfaces, as well as debris, curbs and other obstacles, can cause serious damage to wheels, tires, vehicle body and suspension parts. Be careful to avoid road hazards and reduce your speed, especially if your vehicle is equipped with low-profile tires. Please also remember when making your selection that, while these tires deliver responsive handling, they may ride less comfortably and make more noise than others. Finally, these tires may wear more quickly than other choices. It is important that the inflation pressure is regularly checked and maintained at recommended levels. <sup>3</sup> MMI® navigation plus depends on signals from the worldwide Global Positioning Satellite network. The vehicle's electrical system and existing wireless and satellite technologies must be available and operating properly for the system to function. The system is designed to provide you with suggested routes in locating addresses, destinations and other points of interest. Changes in street names, construction zones, traffic flow, points of interest and other road system changes are beyond the control of Audi of America, Inc. Complete detailed mapping of lanes, roads, streets, toll roads, highways, etc., is not possible, therefore you may encounter discrepancies



## S8 Featured highlights

### Engineering/Performance

- > 4.0-liter TFSI® turbocharged V8
- > 520 hp/481 lb-ft torque
- > cylinder on demand™ engine efficiency technology<sup>1</sup>
- > Acceleration (0–60 mph) in 3.9 seconds

### Transmission/Suspension/Chassis

- > Eight-speed Tiptronic® automatic transmission
- > Audi adaptive air suspension (with S model-specific tuning)
- > 15.7" ventilated front disc/14.0" ventilated rear disc brakes (with S8 badging)
- > Dynamic steering
- > quattro® sport differential

### Exterior

- > 21" 5-triple-spoke design wheels with 265/35 summer performance tires<sup>2</sup>
- > Platinum Gray Singleframe® grille
- > S model-specific front/rear fasciae and side sills
- > Full LED headlights
- > High-beam assistant
- > Aluminum-optic exterior side mirror housings
- > Aluminum-optic front/rear twin-blade fins
- > Power soft closing doors
- > Power trunk with hands-free release
- > S model quad exhaust outlets

### Interior/Seating

- > Four-zone automatic climate control
- > Three-spoke multifunction sport steering wheel with shift paddles (with S8 badging)
- > Power tilt and telescopic steering column
- > Carbon Atlas upper decorative inlays
- > Ambient LED interior lighting plus
- > Dual-pane acoustic glass
- > Power rear side and rear window sunshades
- > Sunroof
- > Alcantara® headliner (color-coordinated with interior)
- > Valcona leather interior
- > 22-way power front sport/comfort seats, including power lumbar adjustment, ventilation, massage function, memory and diamond stitching
- > Extended Leather package (includes airbag cap, center console, door armrests and pulls)

### Infotainment/Technology

- > MMI® navigation plus with voice control system<sup>3</sup>
- > MMI® touch with handwriting-recognition technology
- > Audi connect® with six-month trial subscription<sup>4</sup>
- > 7" color driver information system
- > BOSE® Surround Sound System with 14 speakers, AudioPilot® noise-compensation and 630 watts
- > BLUETOOTH® wireless technology preparation for compatible mobile phones

- > Audi advanced key—keyless start, stop and entry<sup>5</sup>
- > Audi side assist<sup>6</sup> and Audi pre sense® rear<sup>6</sup>
- > Head-up display with navigation information
- > Parking system plus with rear view camera (front and rear acoustic parking sensors)
- > Top and corner view camera system

## S8 Stand-alone options

- > Audi Sport® 21" 5-arm-rotor design wheels with 275/35 summer performance tires<sup>2</sup>
- > Audi Sport® 21" 5-arm-rotor design wheels (Titanium finish) with 275/35 summer performance tires<sup>2</sup>
- > Full Leather package
- > Leather-wrapped shift lever
- > Black Alcantara® headliner
- > Bang & Olufsen® Advanced Sound System with 19 speakers and 1,400 watts
- > Rear Seat Entertainment system with dual 10" screens and DVD single slot
- > Night vision assistant with pedestrian and large animal detection

## S8 Available packages

### Cold Weather package

- > Heated steering wheel
- > Heated outboard rear seats
- > Rear-seat pass-through

### Driver Assistance package

- > Audi adaptive cruise control with stop & go
- > Audi active lane assist<sup>6</sup>
- > Audi pre sense® plus<sup>6</sup>

### Audi design selection, Balao Brown

- > Balao Brown Valcona leather seating with contrasting White stitching and piping (without diamond stitching)
- > Full Leather package
- > White Alcantara® headliner
- > Balsamic Brown Natural Fine Grain Ash Wood upper decorative inlays
- > Brushed Aluminum lower decorative inlays

### Audi design selection, Vermont Brown

- > Vermont Brown Valcona leather seating with contrasting diamond stitching
- > Full Leather package
- > Black Alcantara® headliner
- > Carbon Twill, Copper upper decorative inlays
- > Brushed Aluminum lower decorative inlays



## A shade more extraordinary.

Audi exclusive is an exercise in self-expression. It's a commission of your own personal tastes. A premium option for an exceptionally premium vehicle, Audi exclusive gives you the chance to put an unmistakably personal stamp on your vehicle by offering an almost limitless spectrum of Audi exclusive paint colors, special exclusive decorative inlays and exclusive leather options. Choose the shades, materials and even the stitching that move you the most and make your vehicle as extraordinary as you are.



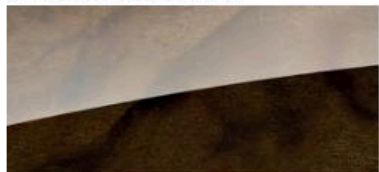
2016 Audi A8 L 4.0T Sport shown in Audi exclusive Tierra del Fuego Medium Gray metallic with Black and Powder Beige Audi exclusive Valcona leather and available equipment.

## Decorative Inlays

### A8 L

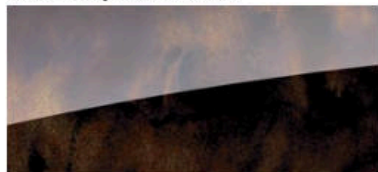
#### Upper decorative inlay options

Dark Brown Walnut Wood



Standard—3.0T, TDI® and 4.0T Sport  
Optional—W12

Assam Gray Vavona Wood



Optional—all models

Brown/Gold Natural Fine Grain Ash Wood



Optional—all models

Velvet Brown Fine Grain Ash Wood



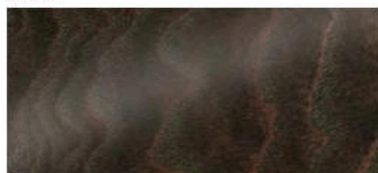
Optional—all models

Piano Black Wood



Standard—W12

Balsamic Brown Natural Fine Grain Ash Wood



Balao Brown Audi design selection

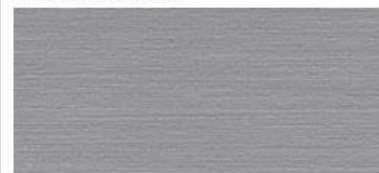
#### Lower decorative inlay options

Piano Black



Standard—3.0T, TDI® and 4.0T Sport  
Optional—W12

Brushed Aluminum

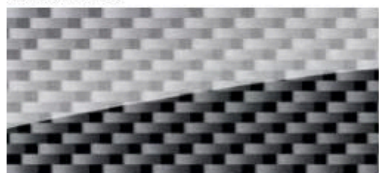


Standard—W12 and Audi design selection

### S8

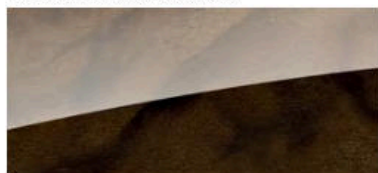
#### Upper decorative inlay options

Carbon Atlas



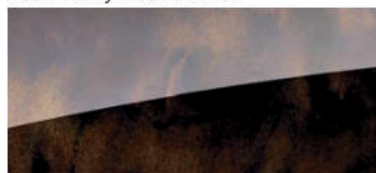
Standard

Dark Brown Walnut Wood



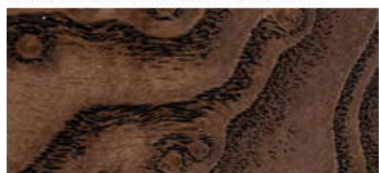
Optional

Assam Gray Vavona Wood



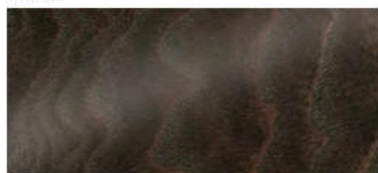
Optional

Velvet Brown Fine Grain Ash Wood



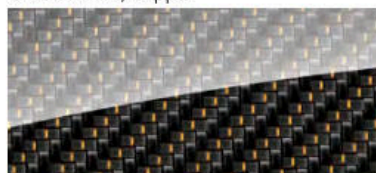
Optional

Balsamic Brown Natural Fine Grain Ash Wood



Balao Brown, Audi design selection

Carbon Twill, Copper



Vermont Brown, Audi design selection

#### Lower decorative inlay option

Brushed Aluminum



Standard

### A8 L

19" 15-spoke design



Standard—3.0T and TDI®  
Optional—W12

20" 15-spoke-structure design  
(High-gloss finish)



Standard—W12

20" 10-parallel-spoke design



Optional—all models

20" 10-spoke-star design



Optional—3.0T, TDI® and 4.0T Sport

Audi Sport® 20" 5-double-spoke design  
(Galvano Silver finish)



Standard—4.0T Sport  
W12 Sport package—W12

Audi Sport® 21" 5-arm-structure design



Optional—4.0T Sport

### S8

21" 5-triple-spoke design



Standard

Audi Sport® 21" 5-arm-rotor design



Optional

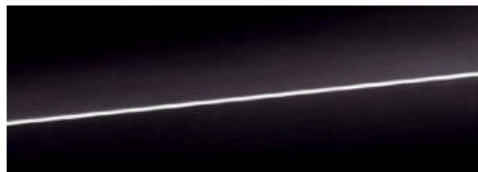
Audi Sport® 21" 5-arm-rotor design  
(Titanium finish)



Optional

# Exterior Colors

Brilliant Black



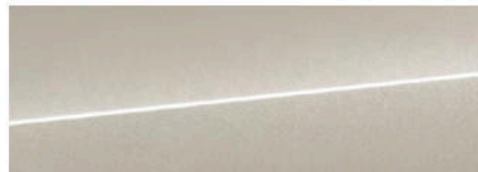
A8 L, S8

Ibis White



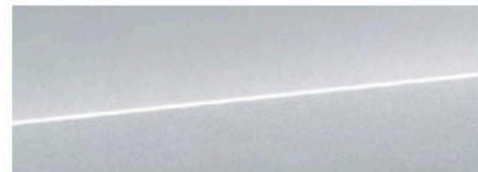
A8 L, S8

Cuvée Silver metallic



A8 L, S8

Florett Silver metallic



A8 L, S8

Glacier White metallic



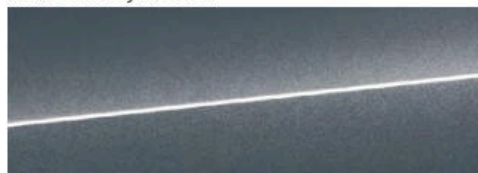
A8 L, S8

Havanna Black metallic



A8 L, S8

Monsoon Gray metallic



A8 L, S8

Moonlight Blue metallic



A8 L, S8

Mythos Black metallic



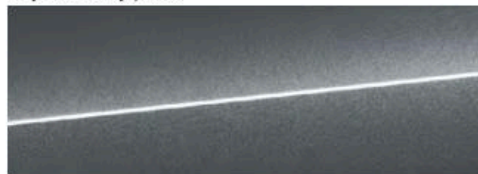
A8 L, S8

Oolong Gray metallic



A8 L, S8

Daytona Gray pearl



S8

Audi exclusive



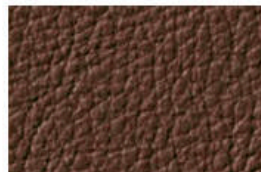
Available on all A8 family of vehicles

A8 L

Black Valetta leather<sup>1</sup>



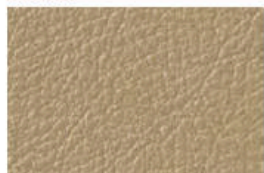
Nougat Brown Valetta leather<sup>1</sup>



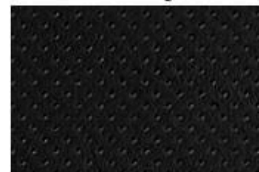
Standard/  
Comfort Seat



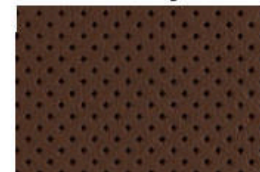
Velvet Beige Valetta leather<sup>1</sup>



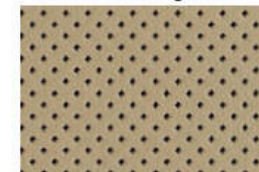
Black Perforated Valcona leather with diamond stitching



Nougat Brown Perforated Valcona leather with diamond stitching



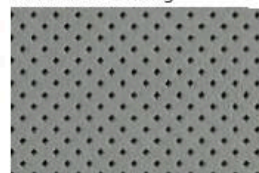
Velvet Beige Perforated Valcona leather with diamond stitching



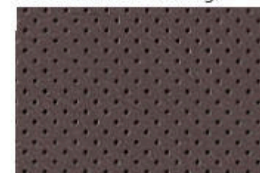
Sport/  
Comfort Seat



Titanium Gray perforated Valcona leather with diamond stitching



Balao Brown Perforated Valcona leather with White stitching and piping (with-out diamond stitching)

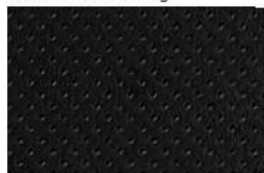


Balao Brown Audi design selection

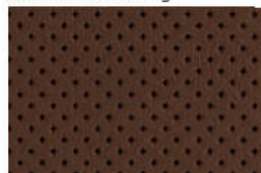
<sup>1</sup> Also available with perforation when equipped with Premium package

S8

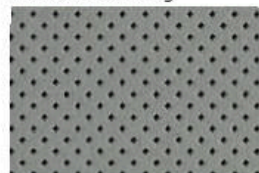
Black Perforated Valcona leather with diamond stitching



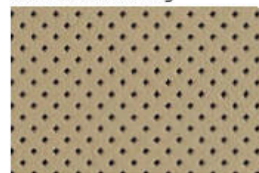
Nougat Brown Perforated Valcona leather with diamond stitching



Titanium Gray perforated Valcona leather with diamond stitching



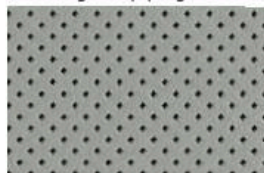
Velvet Beige Perforated Valcona leather with diamond stitching



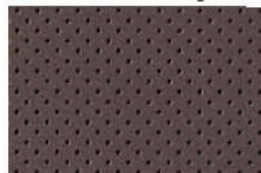
Sport/Comfort Seat



Lunar Silver Perforated Valcona leather with diamond stitching and Steel Gray stitching and piping



Balao Brown Perforated Valcona leather with White stitching and piping (with-out diamond stitching)



Balao Brown Audi design selection

Vermont Brown Perforated Valcona leather with diamond stitching and Granite Gray stitching and piping



Vermont Brown Audi design selection

## Technical Specifications

Engineering   Performance	A8 L 3.0T	A8 L TDI®	A8 L 4.0T Sport	A8 L W12	S8
Engine type	Six-cylinder	Six-cylinder	Eight-cylinder	Twelve-cylinder	Eight-cylinder
Engine block/Cylinder head	Aluminum-alloy	Cast-iron/ Aluminum-alloy	Aluminum-alloy	Aluminum-alloy	Aluminum-alloy
Displacement (cc)/Bore and stroke (mm)	2,995/84.5 x 89.5	2,967/83.0 x 91.4	3,991/84.5 x 89.5	6,299/86.1 x 90.4	3,991/84.5 x 89.5
Horsepower (@ rpm)	333 @ 5,300	240 @ 3,500	450 @ 5,100	500 @ 6,200	520 @ 5,800
Torque (lb-ft @ rpm)	325 @ 2,900	428 @ 1,750	444 @ 1,500	463 @ 4,750	481 @ 1,700
Compression ratio	10.3:1	16.3:1	10.1:1	11.8:1	9.3:1
Valvetrain	24-valve DOHC	24-valve DOHC	32-valve DOHC	48-valve DOHC	32-valve DOHC
Induction/Fuel injection	Supercharged/TFSI®	Turbocharged/TDI®	Turbocharged/TFSI®	FSI®	Turbocharged/TFSI®
cylinder on demand™ engine efficiency technology/programming <sup>1</sup>	—	—	■	■	■
Start-stop efficiency system <sup>1,2</sup>	■	■	■	—	—
Acceleration (0–60 mph)	5.5 seconds	6.3 seconds	4.4 seconds	4.4 seconds	3.9 seconds
Top track speed <sup>3</sup>	130 mph	130 mph	130 mph	130 mph	155 mph
<b>Transmission   Drivetrain</b>					
Eight-speed Tiptronic® automatic transmission with quattro® all-wheel drive	■	■	■	■	■
Sport differential	—	—	Available	Available	■
<b>Body   Suspension   Chassis</b>					
ultra® lightweight technology—ASF® aluminum construction	■	■	■	■	■
Five-link front suspension	■	■	■	■	■
Trapezoidal-link rear suspension	■	■	■	■	■
Audi adaptive air suspension	■	■	■	■	—
Audi adaptive air suspension (with S model-specific tuning)	—	—	—	—	■
Ventilated front disc/Ventilated rear disc brakes (in)	15.0/14.0	15.0/14.0	15.0/14.0	15.7/14.0	15.7/14.0
Electromechanical power steering system	■	■	■	■	■
Dynamic steering	—	—	Available	■	■
Steering ratio	15.1:1	15.1:1	15.1:1	15.1:1	15.1:1
Turning diameter, curb-to-curb (ft)	41.7	41.7	41.7	41.7	40.4

<b>Exterior measurements</b>	<b>A8 L 3.0T</b>	<b>A8 L TDI<sup>®</sup></b>	<b>A8 L 4.0T Sport</b>	<b>A8 L W12</b>	<b>S8</b>
Wheelbase (in)	122.9	122.9	122.9	122.9	117.8
Length (in)	207.4	207.4	207.4	207.3	202.2
Height (in)	57.9	57.9	57.9	57.9	57.5
Overall width with mirrors (in)	83.1	83.1	83.1	83.1	83.1
Overall width without mirrors (in)	76.7	76.7	76.7	76.7	76.7
Track, front/rear (in)	64.7/64.4	64.7/64.4	64.7/64.4	64.7/64.4	64.7/64.4
Curb weight (lb)	4,464	4,564	4,619	4,806	4,685
Drag coefficient (Cw)	.26	.26	.27	.26	.28

<b>Interior measurements</b>	<b>A8 L 3.0T</b>	<b>A8 L TDI<sup>®</sup></b>	<b>A8 L 4.0T Sport</b>	<b>A8 L W12</b>	<b>S8</b>
Head room with sunshade (in, front/rear)	37.2/39.1	37.2/39.1	37.2/39.1	37.2/38.1	37.2/39.1
Leg room (in, front/rear)	41.4/42.9	41.4/42.9	41.4/42.9	41.4/42.9	41.4/38.7
Shoulder room (in, front/rear)	59.1/57.8	59.1/57.8	59.1/57.8	59.1/57.8	59.1/57.8
Cargo volume (cu ft)	14.2	14.2	14.2	14.2	14.2
Seating capacity	5	5	5	4 (5 optional)	5

<b>EPA mileage estimates   Capacities   Emissions</b>	<b>A8 L 3.0T</b>	<b>A8 L TDI<sup>®</sup></b>	<b>A8 L 4.0T Sport</b>	<b>A8 L W12</b>	<b>S8</b>
Tiptronic <sup>®</sup> automatic transmission (city/highway/combined) <sup>2</sup>	19/29/22	24/36/28	18/29/22	14/22/17	17/27/20
Engine oil (qt)	6.3	6.8	8.5	11.8	8.5
AdBlue <sup>®</sup> (gal)	—	7.1	—	—	—
Fuel (gal)	21.7	21.7	21.7	21.7	21.7
Required fuel	Premium	Ultra-low-sulfur diesel	Premium	Premium	Premium
Emissions rating	ULEV II	ULEV II	ULEV II	ULEV II	ULEV II

<sup>1</sup> Based on EPA estimates. See [www.fueleconomy.gov](http://www.fueleconomy.gov) for details. Your mileage will vary and depends on several factors, including your driving habits and vehicle condition. <sup>2</sup> EPA estimates. Your mileage will vary and depends on several factors, including your driving habits and vehicle condition. See [www.fueleconomy.gov](http://www.fueleconomy.gov) for details. <sup>3</sup> Top track speed is electronically limited in the U.S. Always obey all speed and traffic laws.

## Great lines make the performance more memorable.

When you have a vehicle as powerful as the A8 L 4.0T Sport with its 450-hp engine and 444 lb-ft of torque, you need an exterior package that exudes just as much authority. With the Sport Style exterior, we give Audi Sport® style to a conventionally stunning Audi vehicle. More aggressive, striking lines define the design, while standard 20" 5-double-spoke design wheels add to its visual appeal. Additionally, a standard panoramic sunroof, Premium and Luxury packages round out the sport luxury feel within the cabin. The A8 L 4.0T Sport is a model offering a premium collection of design cues and features that help make the overall look and feel of your vehicle that much more memorable.



2016 Audi A8 L 4.0T Sport shown in Florett Silver metallic.



2016 Audi A8 L 4.0T Sport shown in Moonlight Blue metallic with available equipment.

## Construct an even richer composition.

Experience an even deeper sense of luxury with the available Audi design selection, which features Balao Brown Valcona leather seating along with White seat stitching, piping and Alcantara® headliner. We think you'll find that this sensuous pairing brings out the depth of the Balsamic Brown Natural Fine Grain Ash Wood upper inlays and contrasts perfectly with Brushed Aluminum inlays that lie below. This package, tastefully signified by special badges on the door, is available on select Audi A8 models, giving art aficionados something grand to admire.



# There's always another story.

Our story doesn't end with this brochure. In fact, we have many more stories to tell at Audi library. Simply download Audi library from the Apple® App Store<sup>SM</sup> or Google Play™ store, and you can read everything, from other model and accessory brochures to special-edition pieces to the award-winning *Audi Magazine*. Dive into a massive trove of Audi specs, interactive content, videos, stories and technologies, just by downloading them onto your tablet!

To download the Audi library app onto your device, just follow these steps:

- › Go to the Apple® App Store<sup>SM</sup> or Google Play™ store
- › Search for "Audi library"
- › Download the app onto your device<sup>1</sup>



<sup>1</sup> Standard text and data usage rates apply. Always pay careful attention to the road, and do not drive while distracted.

## Audi Genuine Accessories

Add distinction, versatility and the ultimate in self-expression with Audi Genuine Accessories. Whether you load the cargo carrier with climbing gear or add a set of stylish new wheels, we offer accessories to help enhance practically every facet of your lifestyle. When purchased from an authorized dealer, all pieces are backed by your vehicle's 4-year/50,000-mile limited warranty, or for 12 months/12,000 miles from the accessory purchase date, whichever is greater.<sup>1</sup> If you're looking to personalize or help protect the vehicle you love, we have a solution designed by Audi that works for you.

### Audi Genuine Sport and Design Accessories

For a bolder appearance or a finishing touch, we have a solution that helps make every mile more enjoyable—and more yours.

- > Stylish wheel designs
- > Rear spoilers
- > License plate frames

### Audi Genuine Electronics Accessories

Our audio options help enhance your listening pleasure, while other accessory options help promote convenience.

- > iPhone® adapter cable
- > Emergency tool
- > Acoustic rear parking system

### Audi TravelSpace Transport Accessories

Wherever you go, help make sure everything fits with a variety of intelligent and innovative solutions.

- > Base carrier bars
- > Bike and ski racks
- > Rooftop cargo carriers
- > In-vehicle cargo bags

### Audi Guard Comfort and Protection Accessories

Help protect what you love. Use Audi Guard Comfort and Protection Accessories to help keep your Audi looking like new—inside and out.

- > Floor mats
- > Splash guards
- > Cargo mats



Visit [parts.audiusa.com](https://parts.audiusa.com) to view the full line of Audi Genuine Accessories.



### 01 Compact cargo carrier

Extra gear won't take up valuable trunk space with this aerodynamic carrier that offers a generous 10.5-cu-ft capacity. Size: 76" long, 26" wide, 15" high.<sup>2</sup>

### 02 Aluminum bike rack

This locking holder fits 20- to 80-mm bike frames with both wheels on the bike and helps keep the bike upright as you secure it in place.<sup>2</sup>

### 03 20" 5-arm parabolic wheel and tire package

An elegant, open design with five parabolic arms, each described by one thin and one medium blade. The blades and rim edge are machined to a bright finish, and the remaining surfaces are graced by a rich Anthracite tone. Every Audi alloy wheel design is engineered, manufactured and tested to meet rigorous factory and regulatory standards.

### 04 Premium textile floor mats

These skid-resistant, precision-fit mats are made of long-life fabric to help protect your vehicle's interior from the elements. Mats are black with silver piping and available in sets of two for front or rear. Rear mats are not available for A8 L.

### 05 A8 all-weather floor mats

Deep-ribbed, channeled design helps protect your vehicle's floor and carpeting from water, mud, sand and snow. Black mats are available in sets of two for front or rear. Front mats feature the A8 logo.

### 06 Load-protection film

This custom-fit transparent film helps protect the rear bumper from scratches while loading and unloading. The red outline depicts the coverage area.

### 07 Indoor car cover

A lightweight, easy-to-use cover helps protect your vehicle's finish. Intended for indoor use only. Includes a storage bag.

<sup>1</sup> Audi Genuine Accessories purchased from an authorized Audi dealer are covered for the greater of: (1) the accessory limited warranty period (12 months or 12,000 miles, whichever occurs first) from the time of purchase; or (2) the remainder of the New Vehicle Limited Warranty period (48 months or 50,000 miles, whichever occurs first). See your authorized Audi dealer for details. <sup>2</sup> All roof-rack system attachments require the base carrier bars, which are not compatible with the A8 L. All attachments sold separately. Recreational equipment, sporting equipment and luggage not included.



01



02



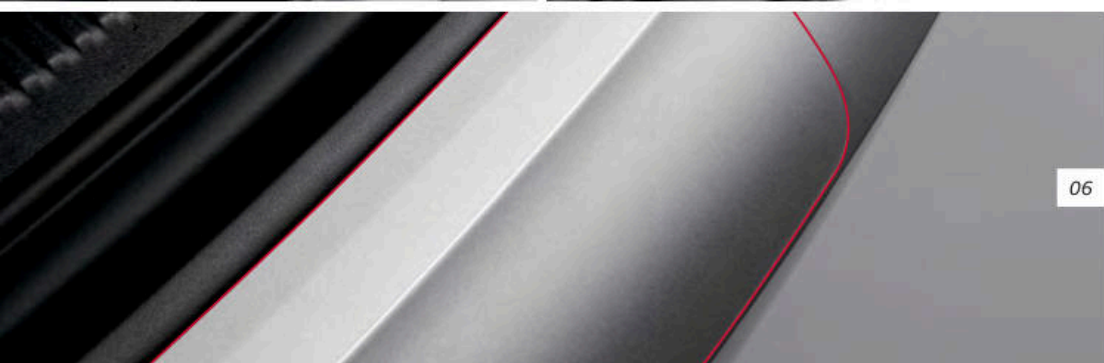
03



04



05



06



07



A8  
S8  
> 2016

Audi of America  
Audiusa.com  
Facebook.com/Audi  
-

© 2015  
Audi of America, Inc.  
Printed in the U.S.A.  
AoA1616828  
>  
>

Note: A word about this brochure. Audi of America, Inc., believes the specifications in this brochure to be correct at the time of printing. However, specifications, standard equipment, options, fabrics, and colors are subject to change without notice. Some equipment may be unavailable when your vehicle is built. Please ask your dealer for advice concerning current availability of standard and optional equipment, and your dealer will verify that your vehicle will include the equipment you ordered. Vehicles in this brochure are shown with optional equipment. See your dealer for complete details on the Audi New Vehicle Limited Warranty, twelve-year limited warranty against corrosion perforation, and Audi 24/7 Roadside Assistance. (Roadside assistance coverage provided by Road America in the U.S. Certain conditions apply; see your dealer for details.) Tires supplied by various manufacturers. "Audi," all model names, "ASF," "Audi connect," "Audi pre sense," "Audi Sport," "cylinder on demand," "FSI," "MMI," "quattro," "Singleframe" and the Singleframe grille design, "S line," "TFSI," "Truth in Engineering," "ultra," and the four rings logo are trademarks or registered trademarks of AUDI AG. "AdBlue" is a registered trademark of the Verband der Automobilindustrie. "Alcantara" is a registered trademark of Alcantara S.p.A. "Apple" and "iPhone" are registered trademarks of Apple Inc. "App Store" is a service mark of Apple Inc. "Bang & Olufsen" and "ICEpower" are registered trademarks of Bang & Olufsen. The BLUETOOTH word mark and logos are owned by the Bluetooth SIG, Inc., and any use of such marks by AUDI AG is under license. "BOSE" and "AudioPilot" are registered trademarks of the BOSE Corporation. "Google," "Google Earth," "Google Play," "Google Street View," "Google Voice" and "Google Voice Search" are trademarks of Google Inc. "HD Radio" and the HD Radio logo are proprietary trademarks of iBiquity Digital Corporation. "SiriusXM" and all related marks and logos are trademarks of Sirius XM Radio Inc. and its subsidiaries. "TDI" is a registered trademark of Volkswagen AG. "Tiptronic" is a registered trademark of Dr. Ing h.c. F. Porsche AG. "Wi-Fi" is a trademark of the Wi-Fi Alliance. All other trademarks are the property of their respective owners. Some European models shown.