

Audi

2017



Audi

# A4 allroad®



# No road is too far.

**A4 allroad®**

2.0T

It's been said that daring to go too far is the only way to find out how far you can go. With that in mind, Audi engineers created the all-new 2017 Audi A4 allroad® to ensure the journey is clear for those intrepid souls who strive to push their limits, to help explore a path ahead when the road seems to end. And with a sumptuous interior loaded with advanced technologies, you can enjoy the open road without ever feeling far from home.





2017 Audi A4 allroad® Premium Plus shown in Gotland Green metallic with available equipment.



## Your journey leads to elevated design.

From every angle, the all-new Audi A4 allroad® is a testament to the power of design simplicity, from the unique diamond-inspired Singleframe® grille to the brilliance of our iconic LED technology. With a tall stature and contrast cladding or optional full-paint finish, you have a vehicle that rises to meet the road ahead.



# Give peace of mind a chance.

We understand that you can't control everything you experience on the road. That's why the Audi A4 allroad® was engineered with features such as Electronic Stability Control (ESC) with Offroad mode, secondary collision brake assist and traction control (ASR), driver adaptive and front-passenger dual-stage airbags<sup>1</sup> and a rigid occupant safety cell—to help give you a little more peace of mind.



2017 Audi A4 allroad® Premium Plus shown in Manhattan Gray metallic with optional full-paint finish and available equipment.

<sup>1</sup> Airbags are supplemental restraints only and will not deploy in all crash circumstances. Always use safety belts and seat children only in the rear, using restraint systems appropriate for their size and age.

# Find comfort in the adventure.

When your trip becomes a journey, nothing can keep you centered like finding a sense of ease and focus along the way. That's why we designed the interior to place the tools you need where you need them, providing consistency in control and comfort in almost any environment. The ergonomic interior space was painstakingly designed to help make your Audi A4 allroad® easy to operate. An intelligent infotainment platform is prominently placed on either the bold MMI® center display or the available intuitive Audi virtual cockpit. A yacht-style gear selector gives your wrist a comfortable place to rest, while the available MMI touch can recognize commands input by handwriting.<sup>1</sup>



## The traveler as an honored guest.

Keep the cabin calm with a climate ventilation system that helps reduce noise and drafts for increased comfort. The roomy interior provides a sense of ease and style with standard leather seating surfaces, available front and rear heated seats and ventilated front sport seats. For a heightened interior environment, consider the available ambient LED interior lighting plus package to illuminate contour and background elements in up to 30 color settings, or pair your color profile with Audi drive select modes based on an Interactive setting. With detailed, personalized comfort, the 2017 Audi A4 allroad® will change your idea of life on the road.



True power opens up  
the world to you.



// Engine

2.0-liter TFSI® turbocharged four-cylinder engine.

252 hp / 273 lb-ft.

// Drivetrain

Seven-speed S tronic® dual-clutch automatic transmission.

quattro® all-wheel drive with ultra® technology.

// Performance

Top track speed of 130 mph.<sup>1</sup>

0-60 mph in 5.9 sec.

In this world, access is power—and with the all-new Audi A4 allroad®, all you have to do is push a button to unleash both. With quattro® all-wheel drive with ultra® technology, you can experience the intensity and adaptability of its capable handling. And with the delivery of power through a seven-speed S tronic® dual-clutch automatic transmission, you'll find it easier to release your vehicle's potency.<sup>2</sup>

2017 Audi A4 allroad® Premium Plus shown in Gotland Green metallic with available equipment.

1 Top track speed is electronically limited in the U.S. Always obey all speed and traffic laws. 2 Always obey all speed and traffic laws.

# How we handle your mood.



## // Adaptive damping suspension

Changing terrain demands versatility from your vehicle. Blending handling with comfort, the adaptive damping suspension helps improve the directional stability of the vehicle, adjusting the dampers at all four wheels within milliseconds.

Adaptability is essential to a progressive state of mind. This is demonstrated with aplomb by the Audi A4 allroad®, as the precise handling is made more thrilling by standard adaptive damping suspension and the modes of standard Audi drive select. They're paired with all-new quattro® with ultra® technology, which offers greater efficiency in normal driving situations and re-engages all-wheel drive when it's needed in a fraction of a second.<sup>1</sup>

# On our radar, off your nerves.

- Cameras
- Radar sensors
- Ultrasonic sensors

The all-new Audi A4 allroad® packs more available intelligent assistance features than it ever has before.

Our comprehensive portfolio of available driver assistance technologies help you to respond to unexpected situations on the road. In congested traffic, available traffic jam assist combines acceleration, braking and steering guidance to help support your mobility.<sup>1</sup> If your vehicle is equipped with available Audi pre sense® front, the Collision avoidance assist system helps to compute a more suitable path and provides steering input, helping you stay on the intended path.<sup>1</sup> In the event that your vehicle begins to leave a lane without signaling, available Audi active lane assist<sup>1</sup> can give you a steering-wheel vibration warning and gently corrects your steering, helping you avoid a potential incident.

## // Traffic jam assist

Included as a function within available Audi adaptive cruise control with stop & go, traffic jam assist combines acceleration and braking along with steering guidance when traveling at speeds between 0-40 mph in congested traffic.<sup>1</sup>

## Standard driver assistance aids

Audi pre sense® basic<sup>1</sup>

Audi pre sense® city<sup>1</sup>

Rear view camera<sup>1</sup>

Parking system plus with front and rear acoustic sensors<sup>1</sup> (Premium Plus models)

Parking system plus with top view camera system<sup>1</sup> (Prestige models)

Head-up display (Prestige models)



## Technology package

Standard on Prestige models

Available on Premium Plus models

Audi side assist and Audi pre sense® rear<sup>1</sup>  
- with Rear cross traffic assist<sup>1</sup>  
- with Vehicle exit assist<sup>1</sup>

## Driver Assistance package

Available on Prestige models

Audi adaptive cruise control with stop & go and traffic jam assist<sup>1</sup>

Audi pre sense® front<sup>1</sup>  
- with Turn assist<sup>1</sup>  
- with Collision avoidance assist<sup>1</sup>

Traffic sign recognition<sup>1</sup>

Audi active lane assist<sup>1</sup>

High-beam assistant

For a complete list of Technology and Driver Assistance package features, please see Trim Section of this brochure for more details.

Download the Audi library app<sup>2</sup> on the App Store® or Google Play™ store, or visit [Audiusa.com/brochures](http://Audiusa.com/brochures) to dive deeper into the all-new Audi A4 allroad® as well as other models and Audi information.

<sup>1</sup> The features discussed are not substitutes for attentive driving. Please see your owner's manual for further details and important limitations. <sup>2</sup> Standard text and data usage rates apply.



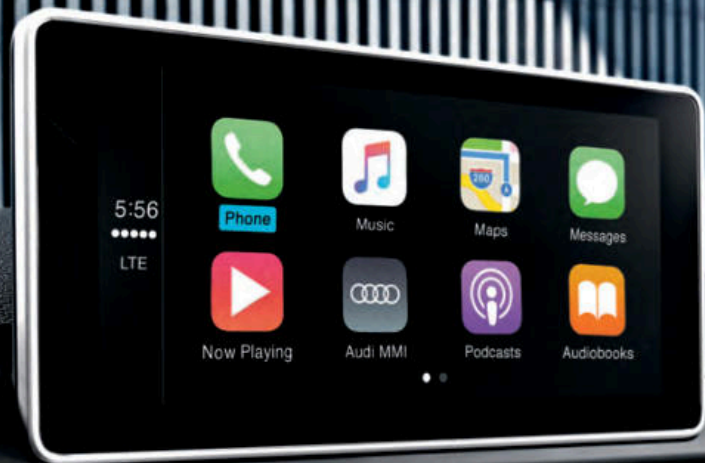
Smart, bold and beautiful. The available Audi virtual cockpit can give you the full picture of what you need to see, in your field of vision, with vibrant color on a 12.3-inch display. The innovative, fully digital instrument cluster offers two unique modes for viewing data: Classic and Infotainment. Classic mode offers the traditional speedometer and tachometer, whereas Infotainment mode minimizes the traditional gauges while providing space for a larger panoramic navigation and other visuals. For a more hands-on approach, consider our available MMI® touch rotary controller with integrated touchpad and intuitive two-button function keys.<sup>1</sup>

1 Always pay careful attention to the road, and do not drive while distracted.

## The human-machine interface becomes humane.



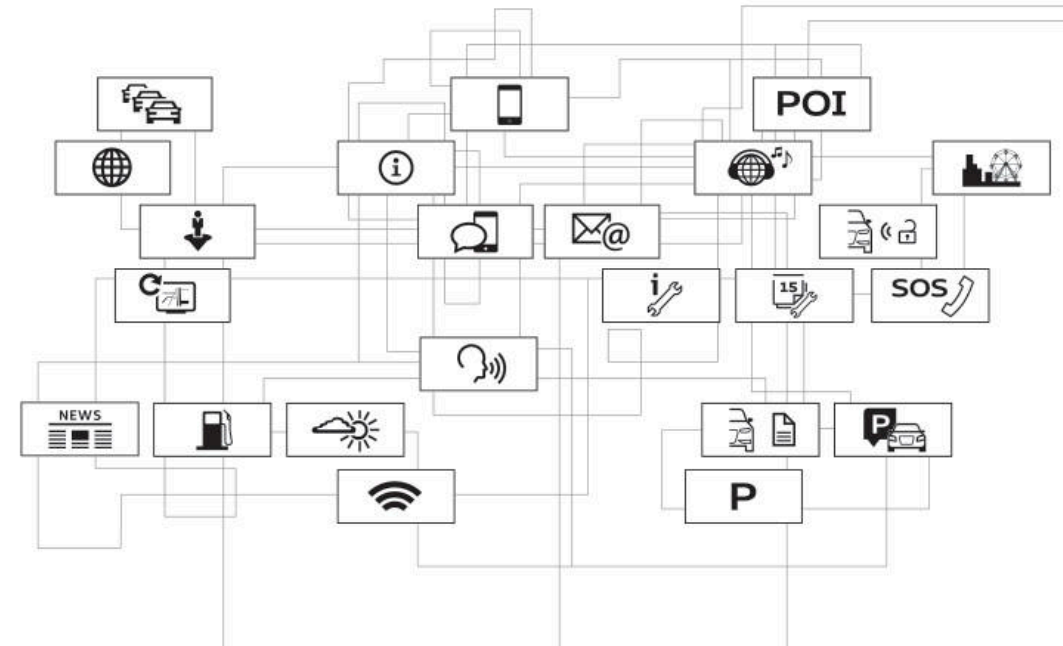
Take comfort in the familiarity of your compatible mobile device when you connect it via standard Audi smartphone interface. When linked with your iPhone®, Apple CarPlay™ allows you to control your iPhone® through Siri® and the car's controls to access your favorite apps such as Apple Music®, Maps, Messages and more. If you have a compatible Android device, Google™ Android Auto will connect you with Google Play™ Music, Google Maps™, Google Search and more.<sup>1</sup>



Audi smartphone interface supported by Apple CarPlay™, shown with available 8.3-inch MMI® center infotainment/navigation display.

# The soul of a new machine.

Stay connected even when you're on-the-go with the power of the available next-generation Audi connect® system.<sup>2</sup> Looking for interesting events in your area? Want to avoid heavy traffic? Want to keep passengers entertained with an in-vehicle Wi-Fi® hotspot?<sup>3</sup> Audi connect has you covered with a robust portfolio of services with the means to inform, entertain and help get you to where you want to go.



# A front-row feeling.

Get the sensory experience of standing 30 feet from your favorite artists while sitting in the comfort of your front seat, thanks to the meticulously crafted, available Bang & Olufsen® 3D Sound System. You can experience both thrilling highs and sumptuous lows in their most lifelike form, provided by 19 speakers and powered by a 16-channel amplifier with an output of 755 watts. The high-quality design and location of the speakers both enhances the spaciousness of the sound and adds to the sleek interior look of the vehicle, giving sound an entirely new dimension.



<sup>1</sup> Always pay careful attention to the road, and do not drive while distracted. Not all features available on all operating systems. Standard text and data usage rates apply. These features require compatible device, operating system, and mobile apps. See mobile device and app providers for terms and privacy. <sup>2</sup> Always pay careful attention to the road, and do not drive while distracted. Audi connect should only be used when it is safe and appropriate. Audi connect services and features are optional, provided with the support of authorized affiliated and third party service providers, and may require additional subscriptions with separate terms and conditions. Available on select models. Certain services collect location information, see Terms of Service for information about how to disable and for other details. <sup>3</sup> Always pay careful attention to the road, and do not drive while distracted. The Wi-Fi hotspot feature is intended for passenger use only. Connect PLUS features and technologies are optional, may require an additional subscription with separate terms and conditions, and should be used only when it is safe and appropriate. See materials provided by wireless carrier for terms, privacy, data security details. Returning devices connect automatically and use plan data unless hotspot is removed from device settings.



A. **A4 allroad® badging** | This emblem pays subtle tribute to the vehicle's substantial capability.

B. **Available Audi virtual cockpit** | Intuitive, immersive, available intelligence is right in your sight line.

C. **Yacht-style throttle gear selector** | Rest your wrist naturally while engaging the MMI® touch handwriting system.

D. **Available head-up display**

E. **Available Natural Gray Oak Wood inlays**

F. **Unique front fascia design** | With a redesigned bumper and air intakes, you can take the unhesitating quality of the A4 allroad® at face value.

G. **Three-zone automatic climate control** | Keep nearly all of your passengers cozy with climate control keys that include haptic feedback.

H. **Underbody protection** | Resilient front guard and rear diffuser help protect the vehicle's underbody, adding to its offroad appeal.

I. **A4 allroad® unique Singleframe® grille** | A distinctive aluminum-optic Singleframe® grille presents a diamond-inspired shape with vertical blades to represent the uniquely rugged character of the A4 allroad®.



You're a try-anything-once, never-sit-still, give-it-your-all kind of person. Life doesn't just string you along; you live to take life further. Audi Genuine Accessories can help you do just that. For personalizing, help in protecting and showing your Audi pride, our accessories were made for your lifestyle.

# Now for the finishing touches.



## A. Compact cargo carrier<sup>1</sup>

Extra gear won't take up valuable cargo space with our aerodynamic carrier that offers a generous 10.5-cu-ft capacity. Size: 76" long, 26" wide, 15" high.



B

## B. Cargo tray

The high sides of this heavy-duty tray help protect your vehicle's cargo area from dirt and grime.



C

## C. Ski and snowboard racks<sup>1</sup>

These racks help transport your equipment to the slopes. The standard attachment (shown) holds two sets of skis or two snowboards. A deluxe attachment, sold separately, holds up to six sets of skis or four snowboards.



## D. Rear spoiler

Complement the pure lines of your A4 allroad® with this spoiler. Primed for painting or available pre-painted for added convenience. Consult your authorized Audi dealer for available colors.

<sup>1</sup> All roof-rack system attachments require the base carrier bars. All attachments sold separately. Recreational equipment, sporting equipment and luggage not included.

## Audi Genuine Accessories

### Audi Genuine Sport and Design Accessories

For a bolder appearance or a finishing touch, we have a solution that helps make every mile more enjoyable—and more yours.

- ▶ Exhaust tips
- ▶ Audi beam
- ▶ License plate frames

### Audi TravelSpace Transport Accessories

When on the go, help make sure your gear fits with a variety of intelligent and innovative solutions.

- ▶ Bike and ski racks
- ▶ Rooftop cargo carriers
- ▶ In-vehicle cargo bags

### Audi Guard Comfort and Protection Accessories

Help protect what you love. Use Audi Guard Comfort and Protection Accessories to help keep your Audi looking like new—inside and out.

- ▶ Floor mats
- ▶ First aid kit
- ▶ Cargo mats

### Audi Guard Car Care Products

Your Audi A4 allroad® deserves the very best—a car care line designed specifically for Audi.

- ▶ Leather care
- ▶ Detailing tools
- ▶ Winter protection

#### A. Thule® SUP Taxi<sup>1</sup>

This premier locking stand-up paddleboard (SUP) carrier delivers paddleboard and surfboard security, combined with a convenient, universal mounting design. Fits boards up to 34" wide.



#### B. Sun blinds

Help reduce light transmission and keep the temperature down in your A4 allroad® with our window shades. Available in sets of two or three.



#### C. All-weather floor mats

The all-weather floor mats feature a deep-ribbed, channeled design that helps protect your vehicle's floor and carpeting from the elements. Black mats are available in sets of two for front and rear. Front mats feature the A4 logo.



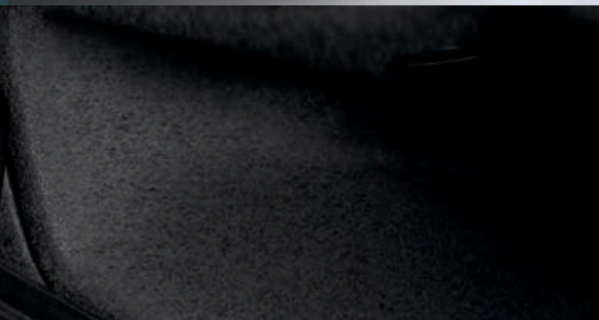
#### D. Splash guards<sup>2</sup>

Help protect the finish of your vehicle with custom-fit splash guards made of crack-resistant rubber. They are available in sets of two for front or rear.

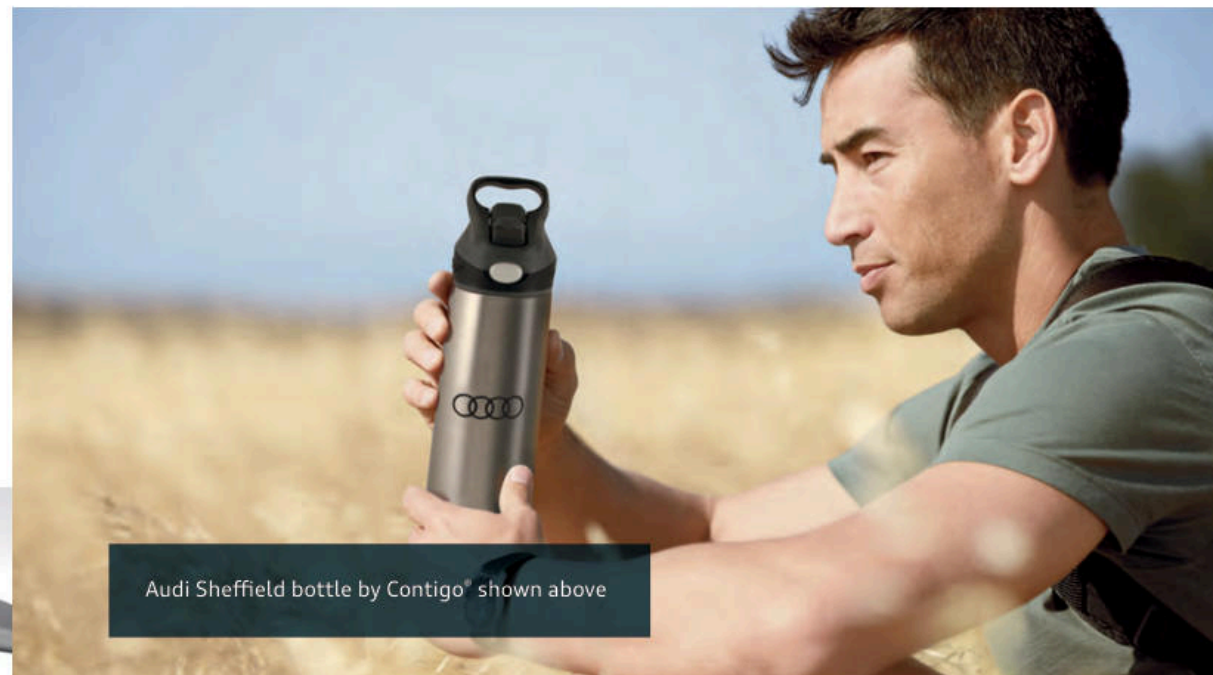


#### E. First aid kit

In the event of an emergency, you may want these essentials close at hand. Includes an emergency blanket, burn/wound dressings and much more.



## Audi collection



#### F. Men's chronograph watch

Top-quality workmanship combines with precise Swiss movement. This elegant watch features a black leather band, stainless steel case, black dial and the Audi rings logo.



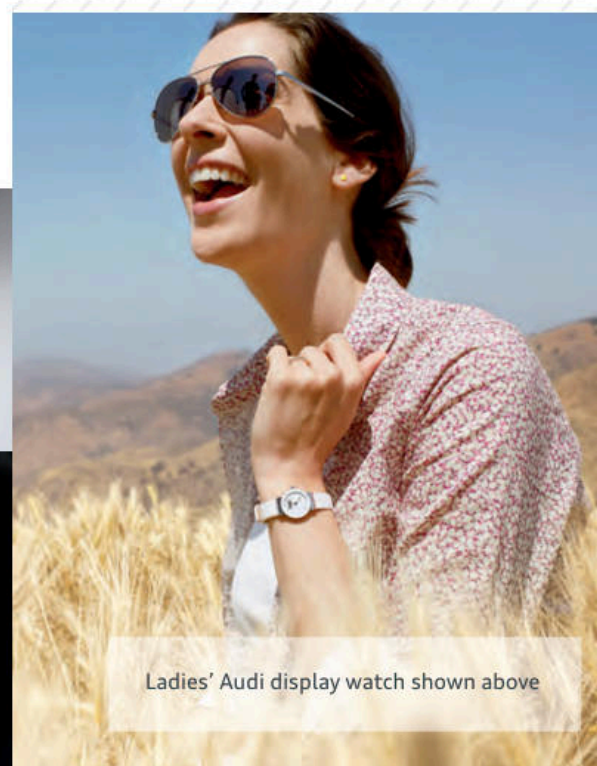
#### G. Men's Ingolstadt jacket

This three-layer performance soft-shell jacket, with a bonded fleece lining and an interior membrane, features custom map artwork in the front and the Audi rings logo on the sleeve.



#### H. Ladies' half-zip mock neck by Spyder®

Moisture-wicking, quick-drying, slim-fit material provides plenty of comfort. Features the Spyder® and Audi Sport® logos and is available in black, red, gray or white.



Visit [parts.audiusa.com](https://parts.audiusa.com) for more.

<sup>1</sup> All roof-rack system attachments require the base carrier bars. All attachments sold separately. Recreational equipment, sporting equipment and luggage not included. <sup>2</sup> Professional installation required. See your authorized Audi dealer for details.

Visit [audicollectionusa.com](https://audicollectionusa.com) for more.



2017 Audi A4 allroad® Prestige shown in Glacier White metallic with available equipment.

Dramatization

## Experience more in Audi library.

Dive deeper into the technical specifications, trim levels and technologies of the all-new Audi A4 allroad® through the Audi library app or web viewer.<sup>1</sup> Download the Audi library app on the App Store® or Google Play™ store, or visit [Audiusa.com/brochures](http://Audiusa.com/brochures) to explore a repository containing Audi informational materials—including a comprehensive look at the all-new 2017 Audi A4 allroad®.



<sup>1</sup> Standard text and data usage rates apply.

# A4 allroad®

Premium



## A4 allroad® Premium Featured highlights

### Infotainment/Technology

- > 5.0" monochrome driver information system
- > Voice control system
- > Audi smartphone interface including Apple CarPlay™ and Google™ Android Auto<sup>1</sup>
- > 7.0" MMI® center infotainment display
- > Audi sound system with ten speakers and single CD player with MP3 playback capability
- > HD Radio™ Technology
- > SDXC card slots with 64GB operating capacity (dual slots)
- > Audi music interface with two USB ports for data and charging
- > BLUETOOTH® streaming audio for compatible devices
- > BLUETOOTH® wireless technology preparation for compatible mobile phones
- > Garage door opener (HomeLink®)

### Exterior

- > 18" 5-V-spoke design contrasting gray-finish wheels and 245/45 R18 100H XL all-season tires<sup>2</sup>
- > Singleframe® grille
- > Xenon plus headlights with LED daytime running lights
- > Automatic headlights
- > LED taillights with dynamic turn signals and rear fog lights
- > Power-adjustable, heated exterior side mirrors
- > LED turn signals integrated into the exterior side mirror housings
- > Aluminum trim around exterior side windows
- > Heated windshield washer nozzles
- > Raised aluminum roof rails
- > Rear privacy glass
- > Power tailgate
- > Dual exhaust outlets with chrome tips
- > A4 allroad® exterior appearance—structured matte gray contrast cladding, chrome door handle trim, matte selenite silver underbody protection and side sill inserts

### Driver Assistance/Innovation

- > Keyless engine start/stop<sup>3</sup>
- > Rain/light sensor for automatic windshield wipers and headlights
- > Cruise control with coast, resume and accelerate features
- > Audi pre sense® basic<sup>4</sup>
- > Audi pre sense® city<sup>4</sup>
- > Audi drive select
- > Rear view camera

### Interior/Seating

- > Three-zone automatic climate control
- > Three-spoke multifunction steering wheel with shift paddles
- > Tilt and telescopic manually adjustable steering column
- > Auto-dimming interior rear view mirror with digital compass
- > Aluminum Ellipse interior inlays
- > Leather-wrapped gear selector
- > Comfort front armrest
- > Four beverage holders
- > Leather seating surfaces
- > Eight-way power front seats and four-way power lumbar adjustment for driver
- > Split folding 40/20/40 rear seatbacks
- > Driver and front-passenger comfort head restraints
- > Driver and front-passenger extendable sun visors with illuminated vanity mirrors
- > Power windows with one-touch up/down operation and power retention until front door is opened
- > Cloth headliner
- > Ambient LED interior lighting package
- > Panoramic sunroof
- > Front and rear floor mats
- > Stainless steel door sill inlays
- > Trunk storage package (side nets, four cargo tie-downs and grocery hook)

### > Safety/Security

- > Driver adaptive and front-passenger dual-stage airbags<sup>5</sup>
- > Driver and front-passenger thorax side airbags<sup>5</sup>
- > Driver and front-passenger knee airbags<sup>5</sup>
- > Sideguard® head-curtain airbags<sup>5</sup>
- > Safety belt reminder for driver and front passenger
- > Lower Anchors and Tethers for Children (LATCH) in rear seats
- > Power central locking system with safety unlock feature if airbags deploy
- > Integrated child door locks in rear doors
- > Electronic Stability Control (ESC) with Offroad mode, secondary collision brake assist and traction control (ASR)
- > Anti-lock Brake System (ABS) with Electronic Brake-pressure Distribution (EBD) and brake assist
- > Tire-pressure monitoring system
- > Electromechanical parking brake
- > Vehicle immobilizer

## A4 allroad® Premium Stand-alone options

- > Full-paint finish<sup>6</sup>
- > Heated front seats
- > High-gloss Dark Brown Walnut Wood inlays
- > Natural Gray Oak Wood inlays
- > Rear thorax side airbags<sup>5</sup>

## A4 allroad® Premium Available packages

### MMI® Navigation plus package

- > 7.0" color driver information system
- > MMI® navigation plus with voice control system<sup>7</sup>
- > MMI® touch with handwriting-recognition technology
- > 8.3" MMI® center infotainment/navigation display
- > Audi connect® CARE assistance and security services<sup>8</sup>
- > Six-month trial subscription to Audi connect® PRIME and connect® PLUS online services<sup>9,10</sup>
- > INRIX XD® Traffic<sup>11</sup>

### Convenience package

- > Anti-theft alarm system
- > Audi advanced key—keyless start, stop and entry with hands-free tailgate release<sup>3</sup>
- > Power-adjustable, auto-dimming, heated exterior side mirrors with memory
- > Driver seat memory
- > SiriusXM® Satellite Radio with 90-day trial subscription<sup>12</sup>

### Sport package

- > Black cloth headliner
- > Front sport seats with four-way power lumbar adjustment for driver and passenger

# A4 allroad®

Premium Plus



## A4 allroad® Premium Plus Featured highlights



In addition to or replaces  
highlighted features  
of A4 allroad® Premium

### Infotainment/Technology

- > Audi connect® CARE assistance and security services<sup>8</sup>
- > Bang & Olufsen® 3D Sound System with 19 speakers, 16-channel amplifier and 755 watts
- > SiriusXM® Satellite Radio with 90-day trial subscription<sup>12</sup>

### Exterior

- > Full LED headlights
- > Power-adjustable, auto-dimming, power-folding, heated exterior side mirrors with memory

### Driver Assistance/Innovation

- > Audi advanced key—keyless start, stop and entry with hands-free tailgate release<sup>3</sup>
- > Parking system plus (front and rear acoustic sensors)<sup>4</sup>

### Interior/Seating

- > Driver seat memory
- > Heated front seats

### Safety/Security

- > Anti-theft alarm system

## A4 allroad® Premium Plus Stand-alone options

- > Full-paint finish<sup>6</sup>
- > High-gloss Dark Brown Walnut Wood inlays
- > Natural Gray Oak Wood inlays
- > Rear thorax side airbags<sup>5</sup>

## A4 allroad® Premium Plus Available packages

### Technology package

- > Audi side assist and Audi pre sense® rear<sup>4</sup>
  - with Rear cross traffic assist<sup>4</sup>
  - with Vehicle exit assist<sup>4</sup>
- > Audi virtual cockpit (12.3" LCD fully digital instrument cluster and two visual modes: Classic and Infotainment)
- > MMI® navigation plus with voice control system<sup>7</sup>
- > MMI® touch with handwriting-recognition technology
- > Six-month trial subscription to Audi connect® PRIME and connect® PLUS online services<sup>9,10</sup>
- > INRIX XD® Traffic<sup>11</sup>
- > 8.3" MMI® center infotainment/navigation display

### Sport package

- > Black cloth headliner
- > Front sport seats with four-way power lumbar adjustment for driver and passenger

### Cold Weather package

- > Heated rear seats
- > Heated steering wheel

# A4 allroad®

## Prestige



### A4 allroad® Prestige Featured highlights



In addition to or replaces highlighted features of A4 allroad® Premium Plus

#### Infotainment/Technology

- > Audi virtual cockpit (12.3" LCD fully digital instrument cluster and two visual modes: Classic and Infotainment)
- > MMI® navigation plus with voice control system<sup>7</sup>
- > MMI® touch with handwriting-recognition technology
- > Six-month trial subscription to Audi connect® PRIME and connect® PLUS online services<sup>9,10</sup>
- > INRIX XD® Traffic<sup>11</sup>
- > 8.3" MMI® center infotainment/navigation display

#### Exterior

- > Acoustic front side glass

#### Interior/Seating

- > Ambient LED interior lighting plus package

#### Driver Assistance/Innovation

- > Audi side assist and Audi pre sense® rear<sup>4</sup>
  - with Rear cross traffic assist<sup>4</sup>
  - with Vehicle exit assist<sup>4</sup>
- > Head-up display with navigation and assistance systems information
- > Parking system plus with top view camera system<sup>4</sup>

### A4 allroad® Prestige Stand-alone options

- > Full-paint finish<sup>5</sup>
- > High-gloss Dark Brown Walnut Wood inlays
- > Natural Gray Oak Wood inlays
- > Rear thorax side airbags<sup>5</sup>

### A4 allroad® Prestige Available packages

#### Driver Assistance package

- > Audi adaptive cruise control with stop & go and traffic jam assist<sup>4</sup>
- > Audi pre sense® front<sup>4</sup>
  - with Turn assist<sup>4</sup>
  - with Collision avoidance assist<sup>4</sup>
- > Traffic sign recognition<sup>4</sup>
- > Audi active lane assist<sup>4</sup>
- > High-beam assistant

#### Sport package

- > Black cloth headliner
- > Front sport seats with four-way power lumbar adjustment for driver and passenger

#### Warm Weather package

- > Ventilated front sport seats with four-way power lumbar adjustment for driver and passenger
- > Manual rear-side window sunshades

#### Cold Weather package

- > Heated rear seats
- > Heated steering wheel

<sup>1</sup> Always pay careful attention to the road, and do not drive while distracted. Not all features available on all operating systems. Standard text and data usage rates apply. These features require compatible device, operating system, and mobile apps. See mobile device and app providers for terms and privacy. "Apple CarPlay" is a trademark of Apple Inc. <sup>2</sup> Tires are supplied and warranted by their manufacturer. High-performance tires are designed for better performance and handling in warm climates. When driving in cold, snowy or icy weather, you should equip your vehicle with four all-season or winter tires, which offer better traction under those conditions. We suggest you use the Audi-recommended winter or all-season tires specified for your Audi. High-performance tires also have a lower aspect ratio that aids performance and handling. Driving over rough or damaged road surfaces, as well as debris, curbs and other obstacles, can cause serious damage to wheels, tires, vehicle body and suspension parts. Be careful to avoid road hazards and reduce your speed, especially if your vehicle is equipped with low-profile tires. Please also remember when making your selection that, while these tires deliver responsive handling, they may ride less comfortably and make more noise than others. Finally, these tires may wear more quickly than other choices. It is important that the inflation pressure is regularly checked and maintained at recommended levels. <sup>3</sup> See owner's manual for further details and important warnings about the keyless ignition feature. Do not leave vehicle unattended with the engine running, particularly in enclosed spaces. <sup>4</sup> The features discussed are not substitutes for attentive driving. Please see your owner's manual for further details and important limitations. <sup>5</sup> Airbags are supplemental restraints only and will not deploy in all crash circumstances. Always use safety belts and seat children only in the rear, using restraint systems appropriate for their size and age. <sup>6</sup> Available only on selected exterior colors, see Exterior Color page for details. <sup>7</sup> MMI® navigation plus depends on signals from the worldwide Global Positioning Satellite network. The vehicle's electrical system and existing wireless and satellite technologies must be available and operating properly for the system to function. The system is designed to provide you with suggested routes in locating addresses, destinations and other points of interest. Changes in street names, construction zones, traffic flow, points of interest and other road system changes are beyond the control of Audi of America, Inc. Complete detailed mapping of lanes, roads, streets, toll roads, highways, etc., is not possible, therefore you may encounter discrepancies between the mapping and your actual location. Please rely on your individual judgment in determining whether or not to follow a suggested MMI® navigation plus route. Mapping updates are available at no charge for the first five map updates and are subsequently available on a subscription basis. <sup>8</sup> Always pay careful attention to the road, and do not drive while distracted. Connect CARE services are provided with the support of authorized affiliated and third party service providers. Available on select models. Connect CARE services are activated prior to purchase or lease and do not require registration or paid subscription. Connect CARE services require vehicle cellular connectivity and availability of vehicle GPS signal; certain services collect location information, see Terms of Service for information about how to disable. See Terms of Service, Privacy Policy, and other details at [www.audiusa.com/audiconnect-privacy](http://www.audiusa.com/audiconnect-privacy) and [www.audiusa.com/audiconnect-terms](http://www.audiusa.com/audiconnect-terms). Connect CARE services should only be used when it is safe and appropriate. <sup>9</sup> Always pay careful attention to the road, and do not drive while distracted. Connect PRIME services are optional, may require an additional subscription with separate terms and conditions, and should be used only when it is safe and appropriate. Trial or paid subscription required. Connect PRIME services require vehicle cellular connectivity and availability of vehicle GPS signal; certain services collect location information, see Terms of Service for information about how to disable. See Terms of Service, Privacy Policy, and other details at [www.audiusa.com/audiconnect-privacy](http://www.audiusa.com/audiconnect-privacy) and [www.audiusa.com/audiconnect-terms](http://www.audiusa.com/audiconnect-terms). Connect PRIME services should only be used when it is safe and appropriate. <sup>10</sup> Pre-paid session-based plans, available for domestic use only. Plans expire when full data allotment is used or time period ends, whichever comes first. Monthly plans auto-renew every 30 days and charges are billed to the credit card on file on the last day of the 30-day term, for the next 30-day time period, unless canceled. To cancel monthly plans at any time, visit [myaudiconnect.com](http://myaudiconnect.com) or call 1-877-505-2834. Other plans do not auto-renew. Wi-Fi®: Connectivity for up to 8 Wi-Fi® capable devices. General Wireless Service Terms: Subject to the Session Based Wireless Data Services Agreement. Other restrictions and terms apply and may result in service termination and/or limitations. Coverage and service not available everywhere. <sup>11</sup> INRIX XD® Traffic is available on all Model Year 16+ Audi A6, A7, TT and Q7 vehicles and is included with an Audi connect® subscription. Other models (Audi A4 allroad®, A3, A4, A5, A8, Q3 and Q5) include SiriusXM® Traffic for four years with the purchase of the vehicle. <sup>12</sup> SiriusXM® Satellite Radio and SiriusXM® Traffic subscriptions are sold separately or as a package after trial period and are continuous until you call SiriusXM® to cancel. See Customer Agreement for complete terms and more information at [www.siriusxm.com](http://www.siriusxm.com). SiriusXM® Traffic service available in select markets. SiriusXM® U.S. Satellite Service available only to those in the 48 contiguous U.S.A., D.C. and Puerto Rico (with coverage limitations).

# Technical Specifications

## Performance

	A4 allroad®
Engine type	Four-cylinder
Engine block/Cylinder head	Cast-iron/Aluminum-alloy
Displacement (cc)/Bore and stroke (mm)	1,984/82.5 x 92.8
Horsepower (@ rpm)	252 @ 5,000-6,000
Torque (lb-ft @ rpm)	273 @ 1,600-4,500
Compression ratio	9.6:1
Valvetrain	16-valve DOHC with Audi valvelift system
Induction/Fuel injection	Turbocharged/TFSI®
Start-stop engine efficiency system <sup>1</sup>	■
Acceleration (0–60 mph)	5.9 seconds
Top track speed	130 mph <sup>2</sup>

## Transmission | Drivetrain

Seven-speed S tronic® dual-clutch automatic transmission	■
quattro® all-wheel drive with ultra® technology	■

## Body | Suspension | Chassis

Five-link front suspension	■
Five-link rear suspension	■
Adaptive damping suspension	■
Ventilated front disc/Ventilated rear disc brakes (in)	13.3/13.0
Electromechanical power steering system	■
Steering ratio	15.9:1
Turning circle, curb-to-curb (ft)	38.1

## Exterior measurements

	A4 allroad®
Wheelbase (in)	110.9
Length (in)	187.0
Height (in)	58.8
Overall width with mirrors (in)	79.6
Overall width without mirrors (in)	72.5
Track, front/rear (in)	62.1/61.7
Ground clearance (in)	6.5
Height to loading lip (in)	26.1
Curb weight (lb)	3,825
Drag coefficient (Cd)	0.32

## Interior measurements

Head room with sunroof, front/rear (in)	40.9/38.2
Leg room, front/rear (in)	41.3/35.7
Shoulder room, front/rear (in)	55.9/54.5
Cargo volume, seatbacks up/folded down (cu ft)	24.2/58.5
Seating capacity	5

## EPA mileage estimates | Capacities | Emissions

S tronic® dual-clutch automatic transmission and quattro® all-wheel drive with ultra® technology (city/highway/combined) <sup>1</sup>	NA
Engine oil (qt)	4.97
Fuel (gal)	15.3 <sup>3</sup>
Recommended fuel	Premium
Emissions rating	ULEV 125

■ Standard — Not applicable NA Information not available at time of printing

## Wheel



18" 5-V-spoke design, contrasting gray finish



Standard on Premium, Premium Plus, Prestige

## Exterior Colors

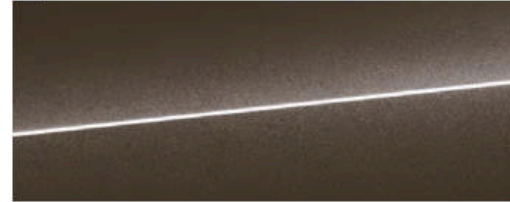
Brilliant Black



Ibis White



Argus Brown metallic<sup>1</sup>



Cuvée Silver metallic



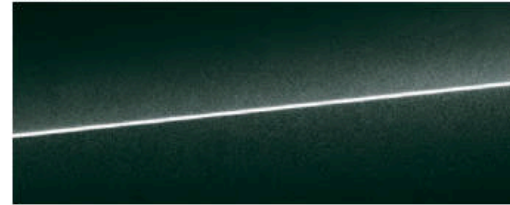
Florett Silver metallic<sup>1</sup>



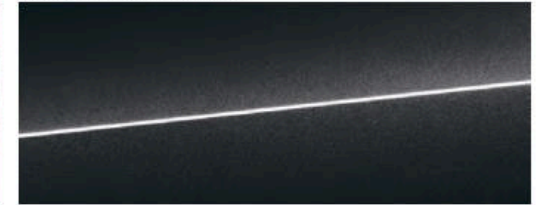
Glacier White metallic<sup>1</sup>



Gotland Green metallic



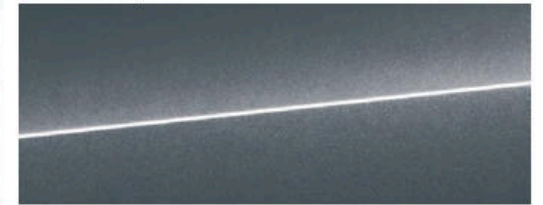
Manhattan Gray metallic<sup>1</sup>



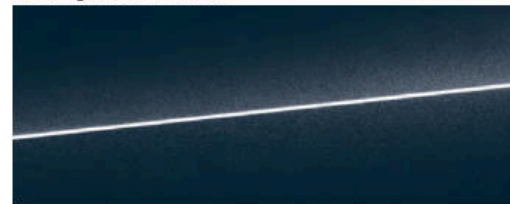
Matador Red metallic



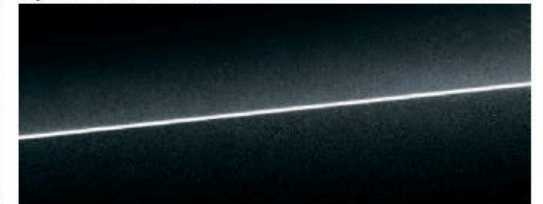
Monsoon Gray metallic



Moonlight Blue metallic



Mythos Black metallic<sup>1</sup>



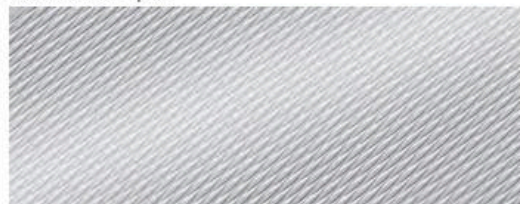
Scuba Blue metallic



## Interior Inlays

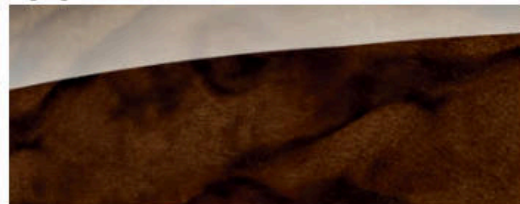


Aluminum Ellipse



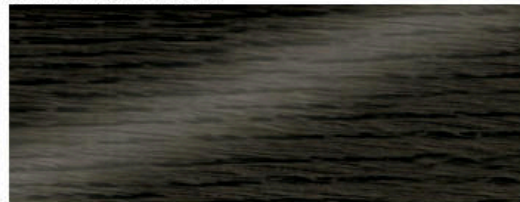
Standard

High-gloss Dark Brown Walnut Wood



Optional

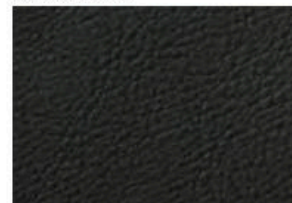
Natural Gray Oak Wood



Optional

## Interior Colors and Seat Selections

Black leather



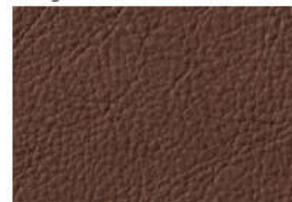
Standard, Sport

Rock Gray leather



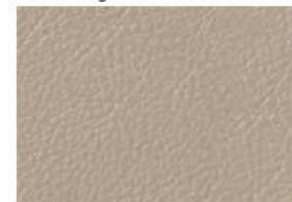
Standard, Sport

Nougat Brown leather



Standard, Sport

Atlas Beige leather



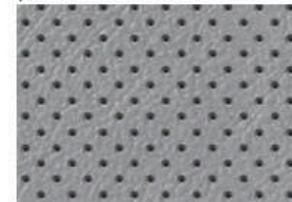
Standard

Black perforated leather



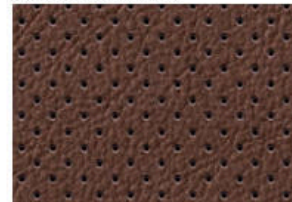
Ventilated sport<sup>1</sup>

Rock Gray perforated leather



Ventilated sport<sup>1</sup>

Nougat Brown perforated leather



Ventilated sport<sup>1</sup>




Standard seat



Sport seat



Ventilated sport seat<sup>1</sup>



A4 allroad®  
2017

Audi of America  
Audiusa.com  
Facebook.com/Audi

Note: A word about this brochure. Audi of America, Inc., believes the specifications in this brochure to be correct at the time of printing. However, specifications, standard equipment, options, fabrics, and colors are subject to change without notice. Some equipment may be unavailable when your vehicle is built. Please ask your dealer for advice concerning current availability of standard and optional equipment, and your dealer will verify that your vehicle will include the equipment you ordered. Vehicles in this brochure are shown with optional equipment. See your dealer for complete details on the Audi New Vehicle Limited Warranty, twelve-year limited warranty against corrosion perforation, and Audi 24/7 Roadside Assistance. (Roadside assistance coverage provided by Road America in the U.S. Certain conditions apply; see your dealer for details.) Tires supplied by various manufacturers. "Audi," all model names, "allroad," "Audi connect," "Audi pre sense," "MMI," "quattro," "S tronic," "Sideguard," "Singleframe," "TFSI," "ultra" and the four rings logo are registered trademarks of AUDI AG. "Apple," "Apple Music," "App Store," "iPhone" and "Siri" are registered trademarks of Apple Inc. "Apple CarPlay" is a trademark of Apple Inc. "Bang & Olufsen" is a registered trademark of Bang & Olufsen. The BLUETOOTH word mark and logos are owned by the Bluetooth SIG, Inc., and any use of such marks by AUDI AG is under license. "Facebook" is a registered trademark of Facebook, Inc. "Google," "Google Maps" and "Google Play" are trademarks of Google Inc. © 2016 Google Inc. All rights reserved. "HD Radio" and the HD Radio logo are proprietary trademarks of iBiquity Digital Corporation. "HomeLink" is a registered trademark of Gentex Corporation. "INRIX XD" is a registered trademark of INRIX, Inc. "SiriusXM" and all related marks and logos are trademarks of Sirius XM Radio Inc. and its subsidiaries. "Wi-Fi" is a registered trademark of the Wi-Fi Alliance. All other trademarks are the property of their respective owners. Some European models shown. Some features may not be available at time of order.