

Audi

2017



Audi

Q5



The destination of the journey.

Q5 | SQ5

2.0T
3.0T

The Audi Q5 doesn't just provide a vehicle for your journey—it's a destination unto itself. It rewards the individual and the group, the driver and the passengers. Providing balance between engaging power, crisp handling and premium interior appointments that capture its allure: This is how the idea of luxurious versatility takes shape as you discover where the Q5 can take you—and where you want to go.





2017 Audi Q5 2.0T shown in Florett Silver metallic with available equipment.



2017 Audi SQ5 Premium Plus shown in Sepang Blue pearl with available equipment.



Visual harmony can

When you strike a rich, tuneful chord, every note is placed exactly where it needs to be. With the Audi Q5, we take a visual approach to harmony. There's a striking elegance in the arc of the fenders as they bend over the wheels, balanced by the coupe-like roofline that hints at the performance you'll feel. From the front, the Singleframe® grille takes center stage with an unmistakable assertiveness, while standard xenon plus headlights with signature LED daytime running lights let the masses know you worked hard to look this good. It's the kind of style that adds poise to personality, the kind of design harmony that's our natural state.

hit all the right notes.



2017 Audi Q5 3.0T Prestige shown in Suzuka Gray metallic with available equipment.

Give peace of mind a chance.

We understand that you can't control everything that happens on the road. That's why we build the kind of vehicle that can help you prepare for the unexpected. With the Audi Q5, this includes strength and safety features in the vehicle, such as a rigid occupant safety cell and advanced airbag technologies,¹ as well as a galvanized steel unibody construction with a lightweight aluminum hood and tailgate—helping to set your mind more at ease.



2017 Audi Q5 2.0T Premium shown in Florett Silver metallic with available equipment.

¹ Airbags are supplemental restraints only and will not deploy under all crash circumstances. Always use safety belts and seat children only in the rear, using restraint systems appropriate for their size and age.

Nowhere to go but up.

There's something very optimistic about the interior of the Audi Q5. Consider the standard panoramic sunroof that fills the interior with natural light, and the driver-oriented layout, where every control, gauge and switch has been placed with convenience in mind. Take another look around, and you'll notice the high-quality materials and fine craftsmanship that you've come to expect from Audi. From the standard Dark Brown Walnut Wood inlays to the carefully stitched leather seating surfaces to the available three-spoke multifunction steering wheel, it all comes together to create an interior that gives you a supremely confident outlook.





2017 Audi Q5 3.0T Prestige shown with Chestnut Brown leather and available equipment.



Multidimensional space for singular versatility.

The ability to adapt to each day is a powerful feature of evolution. When it's time to transport something as important as your family or even just a chest of drawers, we think it is imperative that you be able to transform your space, helping accommodate your needs without hesitation. Standard eight-way, power front seats give you a multitude of options when it comes to personal comfort, while sliding and reclining rear seating helps make sure your passengers are included in this pleasant experience. And with the many possible configurations afforded by the 40/20/40 split folding rear seatbacks, you may never run out of ways to enjoy your Q5.



2017 Audi Q5 3.0T Premium Plus shown in Florett Silver metallic with available equipment.

Extraordinary momentum drives our every performance.

With the Audi Q5, we strive to help you find that irresistible level of performance—the kind that captures power and poise when you take a corner or accelerate into exhilaration. The 2.0-liter turbocharged DOHC engine produces 220 horsepower and combines the valvelift system, FSI® direct injection and turbocharging—making thrilling performance standard. Meanwhile, the available 272-horsepower 3.0-liter TFSI® V6 is an engineering triumph, with a belt-driven supercharger that features counter-rotating four-vane rotors forcing air through dual intercoolers at boosted pressures for extra power. No matter which engine you choose, the Q5 will give you extraordinary momentum going forward.



// Engine

2.0-liter TFSI® turbocharged four-cylinder engine.

220 hp / 258 lb-ft.

3.0-liter TFSI® supercharged V6 engine.

272 hp / 295 lb-ft.

// Drivetrain

Eight-speed Tiptronic® automatic transmission with quattro® all-wheel drive.

// Performance

Top track speed of 130 mph.¹

0-60 mph in 7.0 sec with 2.0T.

0-60 mph in 6.0 sec with 3.0T.

2017 Audi Q5 2.0T Premium Plus shown in Florett Silver metallic with available equipment.

¹ Top track speed is electronically limited in the U.S. Always obey all speed and traffic laws.

The story of torque is one of twists—and turns.

Every drive is, at heart, an engineering narrative. We sweat over balance, precision, weight savings and forces like torque. It's what you feel at the moment of acceleration, a measure of the turning force of an object. For a driver, it's something that makes a drive feel more powerful and spirited. The momentum generated by torque is something we harness in order to make for a better story of performance. A twist for all the brilliant turns you are able to make.

// quattro® all-wheel drive

Under normal driving conditions, the center differential splits torque at a ratio of 40:60, front to rear, to help maximize performance on dry roads, but as conditions change and become more challenging, the ratio is optimized to help maximize grip. This translates to traction and a more confident driving experience.

We let our racing roots show.

When we designed the Audi SQ5, we didn't shy away from our racing heritage. It's bursting at the seams with performance numbers, with a 354-hp TFSI® V6 engine, 346 lb-ft of torque and 0 to 60 mph in 5.1 seconds. Audi drive select, along with a sport suspension, polishes all of that raw power into an incredibly precise drive, while the note of the exhaust lets everyone else on the road know that you're driving something special.



The performance potential of the SQ5 is obvious with S-specific exterior features like a unique Singleframe® grille, aluminum-optic accents and roof spoiler that show our sport pedigree. Add to that our signature LED daytime running lights, a pair of beautifully sculpted quad exhaust outlets perfectly integrated into the lower bumper and available bicolor gloss black 21" Audi Sport® wheels—and you have one powerfully designed vehicle.

// Engine

3.0-liter TFSI®
supercharged
V6 engine.

354 hp / 346 lb-ft.

// Drivetrain

Eight-speed
Tiptronic® automatic
transmission with
quattro® all-wheel drive.

// Performance

Top track speed of
155 mph.¹

0-60 mph in 5.1 sec.

SQ5



2017 Audi SQ5 Premium Plus shown in Mythos Black metallic with available equipment.

1. Top track speed is electronically limited in the U.S. Always obey all speed and traffic laws.



Confidence that flows from the inside out.

We wanted the interior of the Audi SQ5 to make this vehicle's ultimate purpose as impossible to ignore as the exterior. Consider the sport-contoured seating and the SQ5 signifier emblazoned on the front seats and the flat-bottom sport steering wheel with shift paddles as proof. So even when you're charging up a mountain road or using the passing lane,¹ you'll be surrounded by a level of comfort that can only be matched by this vehicle's inspiring performance—an assertion complemented by such distinctive touches as available bicolor Fine Nappa leather seats and optional Layered Aluminum/Black Wood inlays.

SQ5



2017 Audi SQ5 Prestige shown with Black/Lunar Silver Fine Nappa leather and available equipment.

¹ Always obey all speed and traffic laws.

On our radar, off your nerves.



- Camera
- Radar sensors
- Ultrasonic sensors

Dramatization

Audi uses extra sensors for better perception.

Knowing that you can process only so much information at once, we set out to provide you with driving technologies that can lighten the sensory load. With available advanced technologies like Audi side assist,¹ which uses radar sensors to help inform you of vehicles approaching from the side, our innovations help keep you aware of your surroundings.

// Audi side assist

The available Audi side assist¹ uses radar sensors and two different optical warnings to help keep the driver informed about what is approaching from hard-to-see angles to the side of the vehicle.

// Audi adaptive cruise control

The available Audi adaptive cruise control helps maintain a driver-selected distance from the vehicle in front by using a special long-range radar sensor. The system constantly measures the space between your vehicle and the vehicle ahead and helps manage it by automatically adjusting your speed. Once the road ahead is clear, the vehicle resumes the previously preset speed.

// Parking system plus with rear view camera

Helping to make parking an easier task, the available parking system plus features front and rear acoustic parking sensors. For added benefit, the rear view camera offers selectable guidelines for parking in parallel or perpendicular spaces.

Download the Audi library app on the App Store® or Google Play™ store, or visit [Audiusa.com/brochures](https://www.audiusa.com/brochures) to dive deeper into the Audi Q5 as well as other models and Audi information?

¹ The features discussed are not substitutes for attentive driving. Please see your owner's manual for further details and important limitations. ² Standard text and data usage rates apply.

Our focus is your focus.

With the available MMI® system, we focused on intelligence as a key to a higher form of luxury. Simply put, it's an intuitive system that intimately connects you to your vehicle. It's the nerve center of your vehicle, allowing you to control virtually every interior function of your Audi with a simplified source control button system. Whether it's MMI navigation plus or available BLUETOOTH® streaming audio for compatible devices, MMI helps you access information with a few easy clicks.¹ And even without it, you can pair your compatible phone with the vehicle for added convenience. With this kind of brainpower onboard, you can leave the little stuff to us—and just concentrate on how good it feels to drive.

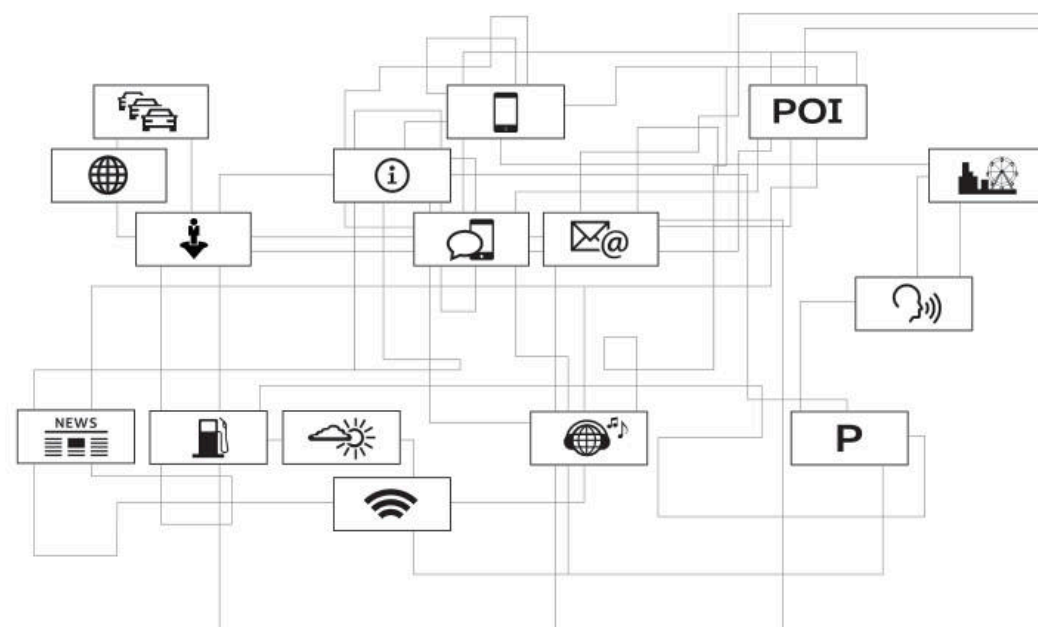


¹ MMI® navigation plus depends on signals from the worldwide Global Positioning Satellite network. The vehicle's electrical system and existing wireless and satellite technologies must be available and operating properly for the system to function. The system is designed to provide you with suggested routes in locating addresses, destinations and other points of interest. Changes in street names, construction zones, traffic flow, points of interest and other road system changes are beyond the control of Audi of America, Inc. Complete detailed mapping of lanes, roads, streets, toll roads, highways, etc., is not possible, therefore you may encounter discrepancies between the mapping and your actual location. Mapping updates are available at no charge for the first five map updates and are subsequently available on a subscription basis.

With an available 7-inch MMI® display, you have access to a wealth of information close to your field of view. Google Earth™ integration and Google Street View™ provides 3D satellite imagery and driver's-eye views of your destination to help you easily recognize your destination. You can also manage your available Audi connect® services, providing news, weather and even Point-of-Interest information to keep you in touch on your journey.¹

There's always an attraction to connect.

With available Audi connect®, you can get the functionality of your compatible cell phone, with the means to get you where you want to go.¹ Need to find a new, highly acclaimed restaurant? Pull over, and with the help of Google Voice Search™, Audi connect allows you to quickly search Google™ by simple voice commands. Looking for something to do in a new city? Get information about current events and directions to their locations. With crisp displays and easy access to steering wheel toggle controls, you have a system that connects you to your world.



Our vision of live sound.

From perfectly sculpted high notes to a crystal-clear mid-range to deep-diving lows, the standard Audi sound system is a veritable orchestra of engineering that is well integrated within your Q5. The available Bang & Olufsen® Sound System is a sound engineer's dream with a 505-watt 14-speaker system that fills the cabin with faithfully rendered, thrilling sound. This shouldn't be surprising at all, considering that Bang & Olufsen® and Audi sound engineers worked tirelessly to craft an incredible acoustic environment and the delivery system for it, even adjusting volume and timbre to balance changing ambient noise levels. So whether you're the type that wants to be soothed by sound or inspired by it, what you'll hear is the embodiment of how good life can sound in your Audi.



¹ Always pay careful attention to the road, and do not drive while distracted. Audi connect® should only be used when it is safe and appropriate. Audi connect® services and features are optional, provided with the support of authorized affiliated and third party service providers, and may require additional subscriptions with separate terms and conditions. Available on select models. Certain services collect location information, see Terms of Service for information about how to disable and for other details.



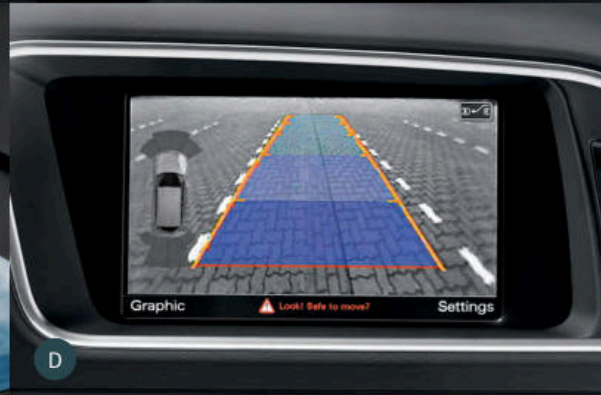
A



B



C



D



E



F

- A. **Ventilated front seats** | Available front seat ventilation offers multiple speeds of cooling, and lush available Milano leather seats provide comfortable support for confidence behind the wheel.
- B. **Interior inlays** | Available in numerous finishes, they help create an interior space that speaks to your artistic sensibilities.
- C. **Panoramic sunroof** | The standard two-panel panoramic sunroof offers both the front and rear passengers a virtually unobstructed view overhead.
- D. **Available parking system plus with rear view camera**
- E. **Power tailgate** | The power tailgate gives you programmable end points so you can adjust the opening to the height you choose—a big help in tight spaces.
- F. **Available thermo cup holder**
- G. **Three-zone automatic climate control**
- H. **Available adaptive xenon plus headlights with LED daytime running lights**
- I. **Available Audi side assist** | Helping to keep you informed about vehicles in lanes next to you.¹



G



H



I

You're a try-anything-once, never-sit-still, give-it-your-all kind of person. Life doesn't just string you along; you live to take life further. Audi Genuine Accessories can help you do just that. For personalizing, help in protecting and showing your Audi pride, our accessories were made for your lifestyle.

Now for the finishing touches.



A. Ski and snowboard racks^{1,2}

These racks help transport your equipment to the slopes. The standard attachment (shown) holds two sets of skis or two snowboards. A deluxe attachment, sold separately, holds up to six sets of skis or four snowboards.



B

B. Fork-mount bike rack^{1,2}

Pursuing your favorite pastime just got easier. Made of anodized aluminum, this bike rack features a quick-clamping device that can be secured with the included lock. A wheel holder attachment (sold separately) conveniently holds the front wheel of the bike and is suitable for wheels with disc brakes.



C

C. Thule® SUP Taxi^{1,2}

This premier locking stand-up paddleboard (SUP) carrier delivers unmatched paddleboard and surfboard security, combined with a convenient universal mounting design. Accommodates boards up to 34" wide.



D. Compact cargo carrier^{1,2}

Extra gear won't take up valuable cargo space with our aerodynamic carrier that offers a generous 10.5-cu-ft capacity. Size: 76" long, 26" wide, 15" high.

Audi Genuine Accessories

Audi Genuine Sport and Design Accessories

For a bolder appearance or a finishing touch, we have a solution that helps make every mile more enjoyable—and more yours.

- ▶ Stylish wheel designs
- ▶ Audi beam
- ▶ License plate frames

Audi TravelSpace Transport Accessories

When on the go, help make sure your gear fits with a variety of intelligent and innovative solutions.

- ▶ Bike and ski racks
- ▶ Rooftop cargo carriers
- ▶ In-vehicle cargo bags

Audi Guard Comfort and Protection Accessories

Help protect what you love. Use Audi Guard Comfort and Protection Accessories to help keep your Audi looking like new—inside and out.

- ▶ Floor mats
- ▶ First aid kit
- ▶ Cargo mats

Audi Guard Car Care Products

Your Audi Q5 deserves the best—a car care line designed specifically for Audi.

- ▶ Leather care
- ▶ Detailing tools
- ▶ Winter protection

A. Q5 winter wheel and tire package

Adding style and performance, this winter wheel and tire package features Audi Original winter tires specifically engineered to help improve traction and handling in a variety of winter weather conditions.¹ See your authorized Audi dealer for details.

B. 20" 10-spoke design wheels

Add a more powerful, sporty look with this eye-catching design. Shown in anthracite, also available in brilliant silver in an Audi wheel and tire package.

C. All-weather floor mats

The all-weather floor mats feature a nubbed design that helps protect your vehicle's floor and carpeting from the elements. Black mats are available in sets of two for front or rear. Front mats feature the Q5 logo.

D. All-weather cargo mat

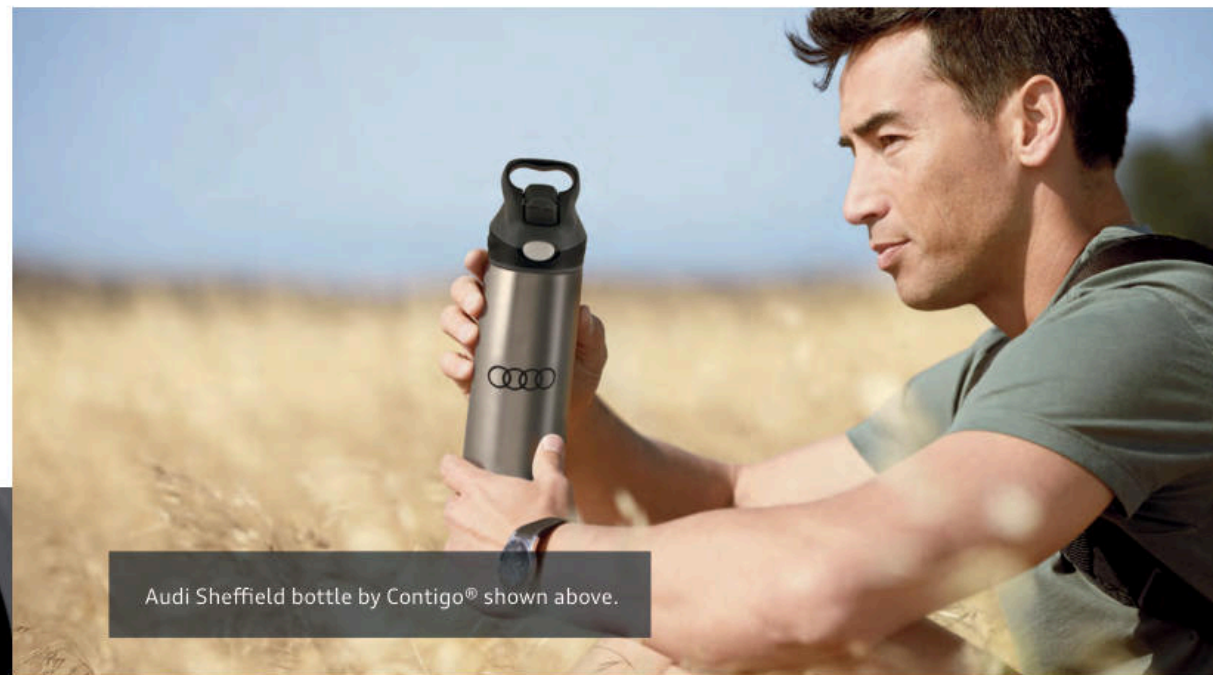
Custom fit for your Q5, the raised outside edge of the cargo mat helps contain spills and protect cargo-area carpeting from stains. The textured material helps control load shifting.

E. First aid kit

In the event of an emergency, you may want these essentials close at hand. Includes an emergency blanket, burn/wound dressings and much more.



Audi collection



Audi Sheffield bottle by Contigo® shown above.

F. Men's Ingolstadt jacket

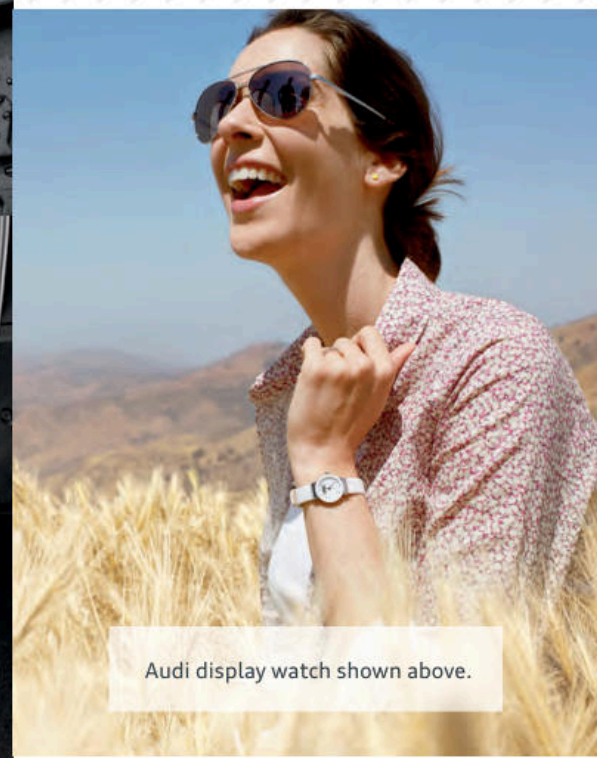
This three-layer performance soft-shell jacket, with a bonded fleece lining and an interior membrane, features custom map artwork in front and the Audi logo on the sleeve.

G. Men's chronograph watch

Top-quality workmanship combines with precise Swiss movement. This elegant watch features a black leather band, a stainless steel case, a black dial and the Audi rings logo.

H. Ladies' half-zip mock neck by Spyder®

Moisture-wicking, quick-drying, slim-fit material provides plenty of comfort. Features the Spyder® and Audi Sport® logos and is available in black, red, gray or white.



Audi display watch shown above.

Visit parts.audiusa.com for more.

¹ When driving during cold, snowy, or icy weather conditions, ensure that your vehicle is equipped with appropriate all-season or winter weather tires. Even with appropriate tires, you must always drive in a manner appropriate for the weather, visibility and road conditions.

Visit audicollectionusa.com for more.

Black optic package

Black is still the new black.

You could call it a classic—or a powerful expression. Whatever you choose to call it, it's undeniable that the Audi Q5 3.0T with available Black optic package creates an indelible impression. Bold gloss black elements accessorize the athletic exterior from its unique Singleframe® grille to gloss black window surrounds and matte black roof rails, and titanium-finish 20" Audi Sport® 5-V-spoke design wheels complete the look. No matter the geographical location or the season, you can engage in a sporty look that will always be in style.



2017 Audi Q5 3.0T Premium Plus shown in Monsoon Gray metallic with available equipment.



Experience more in Audi library.

Dive deeper into the technical specifications, trim levels and technologies of the Audi Q5 through the Audi library app or web viewer.¹ Download the Audi library app on the App Store® or Google Play™ store, or visit Audiusa.com/brochures to explore a repository containing Audi informational materials—including a comprehensive look at the 2017 Audi Q5.

¹ Standard text and data usage rates apply.



Q5

2.0T Premium / Premium Plus



Q5 2.0T Premium Featured highlights

Exterior

- > 18" 5-spoke-V design wheels with 235/60 all-season tires
- > Automatic xenon plus headlights with LED daytime running lights and front fog lights
- > LED taillights and rear fog lights
- > Power-adjustable heated exterior side mirrors with integrated LED turn signals
- > Aluminum roof rails and aluminum trim around exterior windows
- > Power tailgate
- > Flat-bottom dual exhaust outlets with polished tips

Infotainment/Technology

- > Driver information system
- > Audi concert radio with ten speakers and single CD player with MP3 playback capability
- > SiriusXM® Satellite Radio with 90-day trial subscription¹
- > SD card slot with 32GB operating capacity (dual slots if equipped with MMI® navigation plus²)
- > Audi music interface with iPod® integration
- > BLUETOOTH® wireless technology preparation for compatible mobile phones
- > Four 12-volt power outlets
- > Garage door opener (HomeLink®)
- > Cruise control with coast, resume and accelerate features
- > Rain/light sensor for automatic windshield wipers and headlights

Interior/Seating

- > Three-zone automatic climate control
- > Leather-wrapped four-spoke multifunction steering wheel and gear selector
- > Folding and sliding front center armrest with height adjustment
- > Dark Brown Walnut Wood interior inlays
- > Rear privacy glass
- > Panoramic sunroof
- > Leather seating surfaces
- > Eight-way power front seats and four-way power lumbar adjustment for driver
- > Sliding 40/20/40 split folding rear seat with pass-through and adjustable recline

Safety

- > Driver and front-passenger dual-stage airbags, front thorax side airbags and Sideguard® head curtain airbags³
- > Front-passenger occupant detection for airbags³
- > Lower Anchors and Tethers for Children (LATCH) in rear seats
- > Electronic Stability Control (ESC) with Offroad mode and traction control (ASR)
- > Anti-lock Brake System (ABS) with Electronic Brake-pressure Distribution (EBD) and brake assist
- > Tire-pressure monitoring system
- > Electromechanical parking brake

Q5 2.0T Premium Plus Featured highlights



In addition to or replaces highlighted features of Q5 2.0T Premium

Exterior

- > 19" 5-arm-star design wheels with 235/55 all-season tires
- > Power-adjustable, auto-dimming, heated exterior side mirrors with memory

Infotainment/Technology

- > Audi advanced key—keyless start, stop and entry⁴

Interior/Seating

- > Auto-dimming rear view mirror with digital compass
- > Stainless steel door sill inlays
- > Stainless steel trunk sill
- > Driver seat memory
- > Heated front seats

Q5 2.0T Premium / Premium Plus Stand-alone options

- > 19" 5-arm-star design wheels with 235/55 all-season tires (Premium only)
- > Heated front seats (Premium only)
- > Aluminum Satellite interior inlays
- > Fine Grain Ash Natural Brown Wood interior inlays
- > Rear-passenger thorax side airbags³

Q5 2.0T Premium / Premium Plus Available packages

MMI® navigation plus package (Premium only)

- > MMI® navigation plus with voice control system²
- > Audi connect® with six-month trial subscription⁵
- > Color driver information system
- > HD Radio™ Technology
- > SiriusXM® Traffic with four-year subscription¹
- > BLUETOOTH® streaming audio for compatible devices

Technology package (Premium Plus only)

- > MMI® navigation plus with voice control system²
- > Audi connect® with six-month trial subscription⁵
- > Color driver information system
- > Bang & Olufsen® Sound System with 14 speakers and 505 watts
- > HD Radio™ Technology
- > SiriusXM® Traffic with four-year subscription¹
- > BLUETOOTH® streaming audio for compatible devices
- > Parking system plus with rear view camera (front and rear sensors)
- > Audi side assist⁶

¹ SiriusXM® Satellite Radio and SiriusXM® Traffic subscriptions are sold separately or as a package after trial period and are continuous until you call SiriusXM® to cancel. See Customer Agreement for complete terms and more information at www.siriusxm.com. SiriusXM® Traffic service available in select markets. SiriusXM® U.S. Satellite Service available only to those in the 48 contiguous U.S.A., D.C. and Puerto Rico (with coverage limitations). ² MMI® navigation plus depends on signals from the worldwide Global Positioning Satellite network. The vehicle's electrical system and existing wireless and satellite technologies must be available and operating properly for the system to function. The system is designed to provide you with suggested routes in locating addresses, destinations and other points of interest. Changes in street names, construction zones, traffic flow, points of interest and other road system changes are beyond the control of Audi of America, Inc. Complete detailed mapping of lanes, roads, streets, toll roads, highways, etc., is not possible, therefore you may encounter discrepancies between the mapping and your actual location. Please rely on your individual judgment in determining whether or not to follow a suggested MMI® navigation plus route. Mapping updates are available at no charge for the first five map updates and are subsequently available on a subscription basis. ³ Airbags are supplemental restraints only and will not deploy in all crash circumstances. Always use safety belts and seat children only in the rear, using restraint systems appropriate for their size and age. ⁴ Some Audi models are equipped with a keyless ignition feature. The details as to how the system works can vary, and Audi owners should consult their owner's literature or an authorized Audi dealer if they have further questions about the operation of this feature. Please note that Audi warns against leaving the vehicle unattended with the engine running, particularly in enclosed spaces. ⁵ Always pay careful attention to the road, and do not drive while distracted. Audi connect® should only be used when it is safe and appropriate. Audi connect services and features are optional, provided with the support of authorized affiliated and third party service providers, and may require additional subscriptions with separate terms and conditions. Available on select models. Certain services collect location information, see Terms of Service for information about how to disable and for other details. ⁶ The features discussed are not substitutes for attentive driving. Please see your owner's manual for further details and important limitations.

Q5

3.0T Premium Plus / Prestige



Q5 3.0T Premium Plus Featured highlights



In addition to or replaces highlighted features of Q5 2.0T Premium

Exterior

- > 19" 5-arm-star design wheels with 235/55 all-season tires
- > Headlight washing system
- > Power-adjustable, auto-dimming, heated exterior side mirrors with memory
- > S line® exterior appearance

Infotainment/Technology

- > Audi advanced key—keyless start, stop and entry⁴

Interior/Seating

- > Leather-wrapped three-spoke multifunction steering wheel
- > Auto-dimming interior rear view mirror with digital compass
- > Stainless steel door sill inlays
- > Stainless steel trunk sill
- > Front side acoustic and rear privacy glass
- > Driver seat memory
- > Heated front seats

Q5 3.0T Prestige Featured highlights



In addition to or replaces highlighted features of Q5 3.0T Premium Plus

Exterior

- > Adaptive xenon plus headlights with LED daytime running lights and static cornering lights

Infotainment/Technology

- > MMI® navigation plus with voice control system²
- > Audi connect® with six-month trial subscription⁵
- > Color driver information system
- > Bang & Olufsen® Sound System with 14 speakers and 505 watts
- > HD Radio™ Technology
- > SiriusXM® Traffic with four-year subscription¹
- > BLUETOOTH® streaming audio for compatible devices
- > Parking system plus with rear view camera (front and rear sensors)
- > Audi adaptive cruise control
- > Audi side assist⁶
- > Audi drive select

Interior/Seating

- > Three-spoke multifunction steering wheel with shift paddles
- > Thermo cup holder
- > Manual rear-side sunshades

Q5 3.0T Premium Plus / Prestige Stand-alone options

- > Adaptive damping suspension
- > Dynamic steering (Prestige only)
- > 20" 5-arm design wheels with 255/45 summer performance tires⁷
- > Aluminum Satellite interior inlays
- > Fine Grain Ash Natural Brown Wood interior inlays
- > Rear-passenger thorax side airbags³

Q5 3.0T Premium Plus / Prestige Available packages

Technology package (Premium Plus only)

- > MMI® navigation plus with voice control system²
- > Audi connect® with six-month trial subscription⁵
- > Color driver information system
- > Bang & Olufsen® Sound System with 14 speakers and 505 watts
- > HD Radio™ Technology
- > SiriusXM® Traffic with four-year subscription¹
- > BLUETOOTH® streaming audio for compatible devices
- > Parking system plus with rear view camera (front and rear sensors)
- > Audi side assist⁶

Sport Interior package

- > Audi drive select
- > Three-spoke multifunction steering wheel with shift paddles
- > Black cloth headliner
- > Twelve-way power front sport seats, including four-way power lumbar adjustment for driver and passenger

Luxury package

- > Ventilated twelve-way power front seats, including four-way power lumbar adjustment for driver and passenger
- > Milano leather seats
- > Stitched door armrests and instrument panel top covered in Fine Nappa leather

Black optic package

- > 20" Audi Sport® 5-V-spoke design titanium-finish wheels with 255/45 summer performance tires⁷
- > Gloss black Singleframe® grille
- > Gloss black trim around exterior windows
- > Matte black aluminum roof rails
- > Flat-bottom three-spoke multifunction sport steering wheel with shift paddles
- > S line® steering wheel emblem

S line® competition plus package

- > Black optic package
- > 21" Audi Sport® 5-double-spoke star design bicolor gloss black-finish wheels with 255/40 summer performance tires⁷
- > Gloss black exterior mirror housings
- > S line® roof spoiler

SQ5



SQ5 Premium Plus Featured highlights



In addition to or replaces highlighted features of Q5 3.0T Premium Plus

Engineering

- > 3.0-liter supercharged TFSI® V6
- > 354 hp/346 lb-ft torque
- > Acceleration (0–60 mph) in 5.1 seconds
- > Top track speed of 155 mph⁸

Suspension/Chassis/Steering

- > SQ5 sport suspension
- > 15.0" ventilated front disc with SQ5 logo/13.0" ventilated rear disc brakes

Exterior

- > 20" 5-parallel-spoke S design wheels with 255/45 summer performance tires⁷
- > Platinum Gray Singleframe® grille
- > S model-specific front/rear fasciae, side sills and roof spoiler
- > Aluminum-optic front/rear twin blades
- > Aluminum-optic exterior side mirror housings
- > S model quad exhaust outlets

Infotainment/Technology

- > Color driver information system

Interior/Seating

- > Flat-bottom three-spoke multifunction sport steering wheel with shift paddles
- > Brushed Aluminum interior inlays
- > Aluminum door sill inlays with SQ5 logo

- > Twelve-way power front sport seats, including four-way power lumbar adjustment for driver and passenger with SQ5 logo

SQ5 Prestige Featured highlights



In addition to or replaces highlighted features of SQ5 Premium Plus

Suspension/Chassis/Steering

- > Dynamic steering

Exterior

- > Adaptive xenon plus headlights with LED daytime running lights and static cornering lights

Infotainment/Technology

- > MMI® navigation plus with voice control system²
- > Audi connect® with six-month trial subscription⁵
- > Bang & Olufsen® Sound System with 14 speakers and 505 watts
- > HD Radio™ Technology
- > SiriusXM® Traffic with four-year subscription¹
- > BLUETOOTH® streaming audio for compatible devices
- > Parking system plus with rear view camera (front and rear sensors)
- > Audi adaptive cruise control
- > Audi side assist⁶

Interior/Seating

- > Thermo cup holder
- > Manual rear-side sunshades

SQ5 Premium Plus / Prestige Stand-alone options

- > Front and rear red brake calipers
- > 21" Audi Sport® 5-double-spoke star design titanium-finish wheels with 255/40 summer performance tires⁷
- > Carbon Atlas interior inlays
- > Layered Aluminum/Black Wood interior inlays
- > Diamond-stitched Fine Nappa leather seats
- > Rear-passenger thorax side airbags³

SQ5 Premium Plus / Prestige Available packages

Technology package (Premium Plus only)

- > MMI® navigation plus with voice control system²
- > Audi connect® with six-month trial subscription⁵
- > Bang & Olufsen® Sound System with 14 speakers and 505 watts
- > HD Radio™ Technology
- > SiriusXM® Traffic with four-year subscription¹
- > BLUETOOTH® streaming audio for compatible devices
- > Parking system plus with rear view camera (front and rear sensors)
- > Audi side assist⁶

Luxury package

- > Ventilated twelve-way power front seats, including four-way power lumbar adjustment for driver and passenger
- > Milano leather seats
- > Stitched door armrests and instrument panel top covered in Fine Nappa leather

Fine Nappa leather package

- > Fine Nappa leather seats
- > Stitched door armrests and instrument panel top covered in Fine Nappa leather

20" Black optic plus package

- > 20" Audi Sport® 5-V-spoke design titanium-finish wheels with 255/45 summer performance tires⁷
- > Gloss black Singleframe® grille
- > Gloss black exterior side mirror housings
- > Gloss black trim around exterior windows
- > Matte black aluminum roof rails
- > Gloss black roof spoiler
- > Matte black rear diffuser

21" Black optic plus package

- > 21" Audi Sport® 5-double-spoke star design bicolour gloss black-finish wheels with 255/40 summer performance tires⁷
- > Gloss black Singleframe® grille
- > Gloss black exterior side mirror housings
- > Gloss black trim around exterior windows
- > Matte black aluminum roof rails
- > Gloss black roof spoiler
- > Matte black rear diffuser

Technical Specifications

Engineering Performance	Q5 2.0T	Q5 3.0T	SQ5
Engine type	Four-cylinder	Six-cylinder	Six-cylinder
Engine block/Cylinder head	Cast-iron/Aluminum-alloy	Aluminum-alloy	Aluminum-alloy
Displacement (cc)/Bore and stroke (mm)	1,984/82.5 x 92.8	2,995/84.5 x 89.0	2,995/84.5 x 89.0
Horsepower (@ rpm)	220 @ 4,450–6,000	272 @ 4,780	354 @ 6,000–6,500
Torque (lb-ft @ rpm)	258 @ 1,500	295 @ 2,150	346 @ 4,000–4,500
Compression ratio	9.6:1	10.3:1	10.3:1
Valvetrain	16-valve DOHC with valvelift system	24-valve DOHC	24-valve DOHC
Induction/Fuel injection	Turbocharged/TFSI®	Supercharged/TFSI®	Supercharged/TFSI®
Start-stop efficiency system ¹	—	■	—
Regenerative braking	■	■	■
Acceleration (0–60 mph)	7.0 seconds	6.0 seconds	5.1 seconds
Top track speed	130 mph ²	130 mph ²	155 mph ²

Transmission Drivetrain	Q5 2.0T	Q5 3.0T	SQ5
Eight-speed Tiptronic® automatic transmission with quattro® all-wheel drive	■	■	■

Body Suspension Chassis	Q5 2.0T	Q5 3.0T	SQ5
Fully galvanized steel unibody with aluminum hood and tailgate and multistep anti-corrosion protection	■	■	■
Five-link front suspension	■	■	■
Trapezoidal-link rear suspension	■	■	■
SQ5 sport suspension	—	—	■
Adaptive damping suspension	—	Available	—
Ventilated front disc/Solid rear disc brakes (in)	12.6/11.8	—	—
Ventilated front disc/Ventilated rear disc brakes (in)	—	13.6/13.0	15.0/13.0
Electromechanical power steering system	■	■	■
Dynamic steering	—	Available	Available
Steering ratio	15.9:1	15.9:1	15.9:1
Turning diameter, curb-to-curb (ft)	38.1	38.1	38.1

Exterior measurements	Q5 2.0T	Q5 3.0T	SQ5
Wheelbase (in)	110.5	110.5	110.5
Length (in)	182.6	182.6	183.0
Height (in)	65.2	65.2	65.3
Overall width with mirrors (in)	82.2	82.2	82.2
Overall width without mirrors (in)	74.7	74.7	75.2
Track, front/rear (in)	63.7/63.5	63.7/63.5	64.2/64.0
Curb weight (lb)	4,090	4,354	4,420
Drag coefficient (C _w)	.33	.33	.36
Trailer hitch provision with 4,400-lb maximum towing capacity and 440-lb tongue weight ³	■	■	■

Interior measurements	Q5 2.0T	Q5 3.0T	SQ5
Head room with sunroof (in, front/rear)	39.4/39.0	39.4/39.0	39.4/39.0
Head room with sunshade (in, front/rear)	38.1/37.7	38.1/37.7	38.1/37.7
Leg room (in, front/rear)	41.0/37.4	41.0/37.4	41.0/37.4
Shoulder room (in, front/rear)	57.7/56.4	57.7/56.4	57.7/56.4
Cargo volume (cu ft, rear seatbacks up/folded)	29.1/57.3	29.1/57.3	29.1/57.3
Seating capacity	5	5	5

EPA mileage estimates Capacities Emissions	Q5 2.0T	Q5 3.0T	SQ5
Tiptronic® automatic transmission (city/highway/combined) ¹	NA	NA	NA
Engine oil (qt)	4.9	7.2	7.2
Fuel (gal)	19.8	19.8	19.8
Required fuel	Premium	Premium	Premium

■ Standard — Not applicable NA Information not available at time of printing

¹ 2017 EPA estimates not available at time of publication. See www.fueleconomy.gov for 2017 EPA estimates. Your mileage will vary and depends on several factors, including your driving habits and vehicle condition. ² Top track speed is electronically limited in the U.S. Always obey all speed and traffic laws. ³ Maximum tow rating when properly equipped with towing accessories. Other accessories and options may reduce maximum towing capacity. See vehicle owner's manual for details.

Wheels

18" 5-spoke-V design



Standard on Q5 2.0T Premium

19" 5-arm-star design



Standard on Q5 2.0T Premium Plus and 3.0T, available on Q5 2.0T Premium

20" 5-arm design



Available on Q5 3.0T

20" Audi Sport® 5-V-spoke design titanium finish



Available on Q5 3.0T

21" Audi Sport® 5-double-spoke star design bicolor gloss black finish



Available on Q5 3.0T

20" 5-parallel-spoke S design silver finish



Standard on SQ5

20" Audi Sport® 5-V-spoke design titanium finish



Available on SQ5

21" Audi Sport® 5-double-spoke star design titanium finish



Available on SQ5

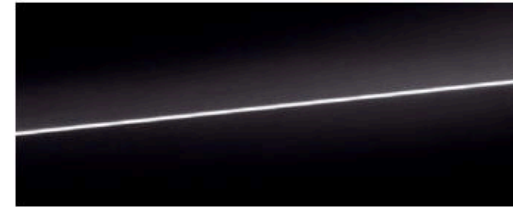
21" Audi Sport® 5-double-spoke star design bicolor gloss black finish



Available on SQ5

Exterior Colors

Brilliant Black



Q5, SQ5

Ibis White



Q5, SQ5

Cuvée Silver metallic



Q5

Florett Silver metallic



Q5, SQ5

Glacier White metallic



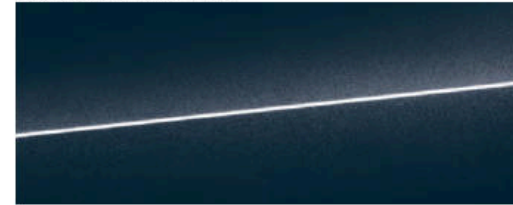
Q5, SQ5

Monsoon Gray metallic



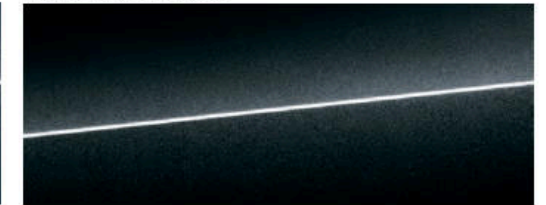
Q5, SQ5

Moonlight Blue metallic



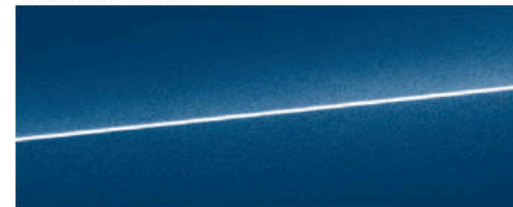
Q5, SQ5

Mythos Black metallic



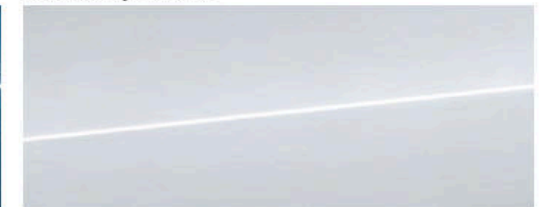
Q5, SQ5

Scuba Blue metallic



Q5

Suzuka Gray metallic



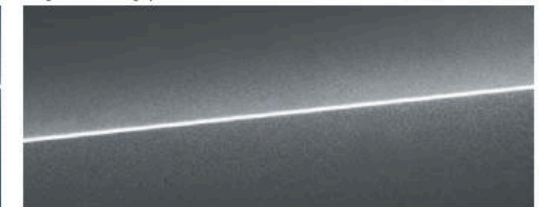
Q5 S line® competition plus package

Utopia Blue metallic



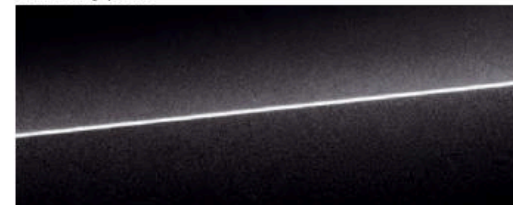
Q5

Daytona Gray pearl



Q5, SQ5

Lava Gray pearl



Q5, SQ5

Sepang Blue pearl

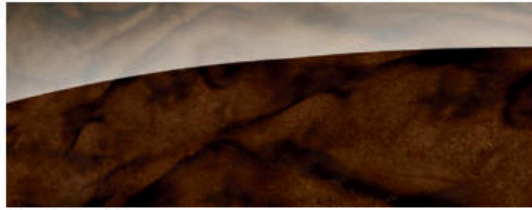


Q5 S line® competition plus package, SQ5

Interior Inlays

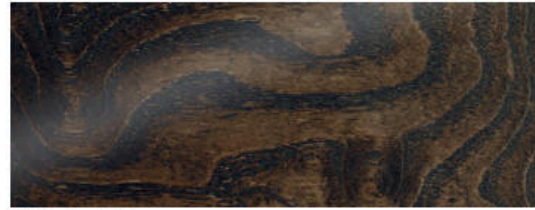


Dark Brown Walnut Wood



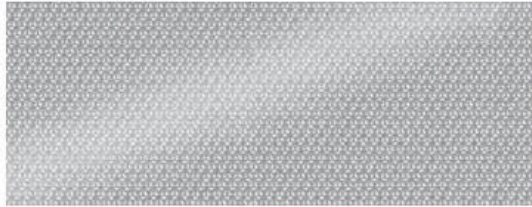
Standard on Q5

Fine Grain Ash Natural Brown Wood



Optional on Q5

Aluminum Satellite



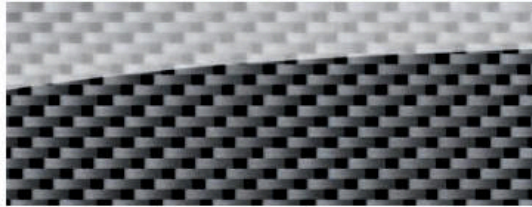
Optional on Q5

Brushed Aluminum



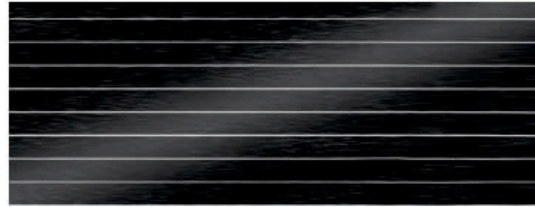
Standard on SQ5

Carbon Atlas



Optional on SQ5

Layered Aluminum/Black Wood



Optional on SQ5

Interior Colors and Seat Selections

Black leather



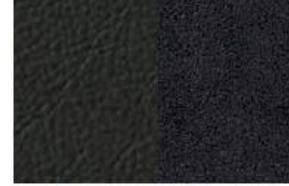
Standard seat, Sport seat on Q5

Black Perforated Milano leather



Ventilated seat on Q5 and SQ5

Black leather/Black Alcantara®



S Sport seat on SQ5

Black Fine Nappa leather



S Sport seat on SQ5

Black Fine Nappa leather with Jet Gray contrast diamond stitching



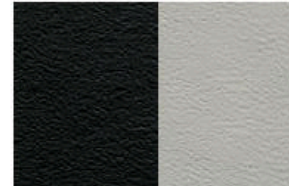
S Sport seat on SQ5

Black leather/Lunar Silver Alcantara®



S Sport seat on SQ5

Black/Lunar Silver Fine Nappa leather



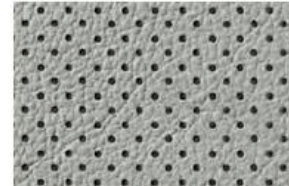
S Sport seat on SQ5

Titanium Gray leather



Standard seat on Q5

Titanium Gray Perforated Milano leather



Ventilated seat on Q5

Chestnut Brown leather



Standard seat, Sport seat on Q5

Chestnut Brown Perforated Milano leather



Ventilated seat on Q5 and SQ5

Black/Chestnut Brown Fine Nappa leather



S Sport seat on SQ5

Black/Magma Red Fine Nappa leather



S Sport seat on SQ5

Pistachio Beige leather



Standard seat on Q5

Pistachio Beige Perforated Milano leather



Ventilated seat on Q5



Standard seat



Sport seat



Ventilated seat



S Sport seat

Q5
2017

Audi of America
Audiusa.com
Facebook.com/Audi

Note: A word about this brochure. Audi of America, Inc., believes the specifications in this brochure to be correct at the time of printing. However, specifications, standard equipment, options, fabrics, and colors are subject to change without notice. Some equipment may be unavailable when your vehicle is built. Please ask your dealer for advice concerning current availability of standard and optional equipment, and your dealer will verify that your vehicle will include the equipment you ordered. Vehicles in this brochure are shown with optional equipment. See your dealer for complete details on the Audi New Vehicle Limited Warranty, twelve-year limited warranty against corrosion perforation, and Audi 24/7 Roadside Assistance. (Roadside assistance coverage provided by Road America in the U.S. Certain conditions apply; see your dealer for details.) Tires supplied by various manufacturers. "Audi," all model names, "Audi connect," "Audi Sport," "FSI," "MMI," "quattro," "S line," "Sideguard," "Singleframe" and "TFSI" are registered trademarks of AUDI AG. "Alcantara" is a registered trademark of Alcantara S.p.A. "App Store" and "iPod" are registered trademarks of Apple Inc. "Bang & Olufsen" is a registered trademark of Bang & Olufsen. The BLUETOOTH word mark and logos are owned by the Bluetooth SIG, Inc., and any use of such marks by AUDI AG is under license. "Contigo" is a registered trademark of Ignite USA, LLC. "Facebook" is a registered trademark of Facebook, Inc. "Google," "Google Earth," "Google Play," "Google Street View" and "Google Voice Search" are trademarks of Google Inc. © 2016 Google Inc. All rights reserved. "HD Radio" and the HD Radio logo are proprietary trademarks of iBiquity Digital Corporation. "HomeLink" is a registered trademark of Centex Corporation. "SiriusXM" and all related marks and logos are trademarks of Sirius XM Radio Inc. and its subsidiaries. "Spyder" is a registered trademark of Spyder Active Sports, Inc. "Thule" is a registered trademark of Thule Sweden AB. "Tiptronic" is a registered trademark of Dr. Ing h.c. F. Porsche AG. All other trademarks are the property of their respective owners. Some European models shown. Some features may not be available at time of order.