



By appointment  
to HM The Queen  
motor car manufacturers  
Bentley Motors Limited  
Crewe Cheshire



By appointment  
to HRH The Prince of Wales  
motor car manufacturers  
Bentley Motors Limited  
Crewe Cheshire



**BENTLEY**

THE FLYING SPUR RANGE





.....

THE FLYING SPUR RANGE



INTRODUCTION <sup>07/</sup> DESIGN <sup>16/</sup>  
PERFORMANCE <sup>26/</sup> INTERIOR <sup>36/</sup>  
PERSONALISING YOUR CAR <sup>50/</sup>  
WORLD OF BENTLEY <sup>80/</sup>  
SPECIFICATIONS AND OPTIONS <sup>86</sup>

**Photography – Colour specification of cars illustrated:**

**Flying Spur V8: Ghost White**  
Fireglow and Beluga leather interior  
Dark Stained Madrona veneer

**Flying Spur V8 S: Rubino Red**  
Beluga and Linen leather interior  
Bright Tint Aluminium veneer

**Flying Spur W12: Khamun**  
Camel and Burnt Oak leather interior  
Dark Stained Burr Walnut veneer

**Flying Spur W12 S: Blue Crystal**  
Linen and Imperial Blue leather interior  
Dark Stained Burr Walnut veneer

**Flying Spur W12 S: Orange Flame**  
Newmarket Tan and Beluga leather interior  
Black Tint Aluminium veneer



## A car made of moments.

The Flying Spur is a perfect balance of both luxury and performance. It is a car with a seemingly endless array of subtle and delightful differences that turn every minute of driving into a moment to appreciate.

Bentley has always known this. It's why the Flying Spur is created to be the world's finest luxury sedan. Startlingly fast and gloriously appointed in equal measure, it is a seamless fusion of contemporary design innovation, peerless engineering expertise and unequalled artisan craftsmanship.

And now, there is a formidable new addition to the Flying Spur stable – the pinnacle Flying Spur W12 S. A new luxury sports sedan with the power many supercar owners would be proud of – and with the craftsmanship for which

Bentley has long been renowned. It has a dramatic aesthetic, with full exterior blackware giving clear indication of what lies beneath its contemporary, sporting exterior. It offers increased power and torque, as well as breathtaking responsiveness for a more dynamic, agile drive.

The Flying Spur W12 S takes its place alongside the Flying Spur V8, the Flying Spur V8 S and the Flying Spur W12 to complete the model line-up. All four deliver dramatic acceleration, assured handling and exquisite detailing – with each Flying Spur taking over 130 hours to hand build. They are created to deliver countless moments of enjoyment, whether business or pleasure, red carpet nights or blue sky weekends. The Flying Spur is a powerful sedan that the most discerning drivers, and passengers, will appreciate.

The Flying Spur V8.  
A life of refinement.  
A life of excitement.

Innovatively designed, precision engineered and reassuringly powerful, the Flying Spur V8 is crafted for grand arrivals, thrilling tours and great escapes. It is a car for those who appreciate life's finer moments.

The Flying Spur V8 is distinctive from any vantage point, marrying sleek, fluid dynamism with a clean, progressive design edge. A sharply defined bonnet crease, the classic Bentley powerline running from the front wheel arch down the car's flank, the commanding upright chrome matrix grille, the twin figure-of-eight exhaust, the familiar muscular stance. The more you look, the more you appreciate.

Beyond the design expertise lies engineering excellence. Beneath the bonnet, a formidable 4.0 litre V8 twin-turbocharged engine produces 660 Nm of torque to propel

the car to a top speed of 183 mph (295 km/h). Performance figures that belie the calmly urbane exterior yet are clearly evoked by the throaty exhaust note. This power, combined with Bentley's renowned all-wheel drive and velvety smooth 8-speed Quickshift automatic transmission, provide an assured driving experience.

Throughout the car's cabin is exceptional luxury to match the exhilarating performance – craft to be appreciated by all the senses. The texture of soft-touch leather. The scent of the finest quality materials. The sound from the advanced infotainment system. All with touch screen access to in-car technology and connectivity for driver and passengers alike.

Whether behind the wheel or behind the chauffeur, every day is there to be seized, and savoured.



## The Flying Spur V8 S. Darker, Sportier.

The Flying Spur V8 S combines a contemporary sporting edge with even more responsive handling. With its dark looks and brooding attitude it is, in every sense, a car designed to turn heads as effortlessly as it turns corners.

An increased torque level of 680 Nm allows the 4.0 litre twin-turbocharged engine to deliver powerful acceleration at low revs and propel the car to a top speed of 190 mph (306 km/h). The suspension has been specifically tuned for greater responsiveness and sharper handling – all with no discernible loss of ride refinement and comfort. These enhancements, coupled with one of the world's finest all-wheel drive systems, create the sense of a more focused and precise driving experience.

The Flying Spur V8 S brings with it a host of sporting style cues. Bentley's renowned radiator matrix grille has a gloss black finish, while the sports bumper design is also highly distinctive. A Beluga gloss rear diffuser, 20" open-spoke painted wheels and dark tint lights\* create a truly dramatic on-road presence.

Inside, an exclusive duo-tone colour combination and leather headliner complement the exquisite semi-aniline hides.\* A knurled gear lever and knurled steering column mounted gear selectors are perfectly matched to the more sporting-focused nature of the Flying Spur V8 S, adding more poise to the pursuit of pleasure.

\*Cost option.



## The Flying Spur W12. The power of sophistication.

The Flying Spur W12 is both striking and alluring. It is a car that embodies Bentley's trademark fusion of unmatched power and performance with unrivalled elegance. One where handcrafted excellence is seamlessly combined with a modern design presence.

The powerful silhouette gives a strong indication of the car's outstanding performance and all-wheel drive capabilities. Beneath the familiar precision-sculpted lines of the bonnet is an immensely powerful 6.0 litre twin-turbocharged W12 engine. This produces 800 Nm of torque to deliver a seemingly never-ending surge of acceleration, propelling the car to a maximum speed of 199 mph (320 km/h).

The Flying Spur W12 can be appreciated from every conceivable angle. The imperious chrome matrix grille, sharp fender wing vents, sleek lines, chrome lower bumper grille with chrome 'wing' insert\* and athletic body design all combine to create an unmatched road presence. Assured muscularity delivered with complete finesse, the Flying Spur W12 is very much a car to drive, or be driven in.

To enter this Bentley is to step into a world of difference. The cabin is flawless and sumptuously appointed. Detail is meticulously handcrafted and deeply rewarding. The technology is understated and presented in a seamless, ergonomic fashion. All these facets combine to envelop you in the Bentley Flying Spur experience, and confirm the Flying Spur W12's status as the most luxurious sedan in the world.

\*Cost option.



## The Flying Spur W12 S. The power to perform.

The new Flying Spur W12 S brings enhanced performance and more attitude to the Flying Spur range. The engine has been tuned for extra power, and a new responsive suspension set-up improves handling and provides even more traction, to deliver an effortless driving experience. With its brooding looks and sporting details in evidence both inside and out, there is no question that the Flying Spur W12 S is a flagship model with a darker side.

The addition of the Flying Spur W12 S sets new standards in the world of performance luxury cars. With 820 Nm of torque, the 6.0-litre hand-built engine delivers effortless acceleration, taking the car from 0 to 60 mph in a blistering 4.2 seconds (0-100 km/h in 4.5 seconds), and on to a top speed of 202 mph (325 km/h). The suspension has been specifically tuned for

improved handling and overall responsiveness in every driving situation – and this sportier feel is achieved with no compromise to ride refinement and comfort. Coupled with one of the world's finest all-wheel drive systems, it provides all the driving satisfaction of a grand tourer, alongside the space for luggage and unrivalled comfort for passengers.

Contemporary design language also gives the new Flying Spur W12 S a darker edge. The striking exterior features extensive blackware amongst a host of other sporting style cues. These include the gloss black matrix radiator grille and sports bumper design with all bright chrome replaced by black chrome. All of these darker details combine to further intensify the Flying Spur W12 S's already powerful on-road presence.



DESIGN





## Design with a difference.

With its keenly defined form and sharp yet supple lines, the Flying Spur announces its presence with its elegant fusion of classic and progressively modern styling. This familiar Bentley design language flows smoothly across the length and breadth of the world's most refined luxury sedan.

Sophistication and sheer road presence are immediately evident. The Bentley 'B' styled 'wing' vent. The characteristic curves and graceful lines that resolve themselves into clean modern edges. Yet, within the characteristic low roofline and classically muscular stance, the Flying Spur's design also hints at something else. Something both tantalising and thrilling. A feeling of near limitless power.



## A complete range of emotions.

The Flying Spur's profile, powerful and charismatic, is there for all to admire. The sweeping front fenders are formed by a specialist superforming process pioneered in the aerospace industry – where aluminium is heated to 500°C and shaped by air pressure – which creates the distinctive knife-edge crease lines.

Trace the elegant curve around the wheel arch as it flows into a single sharp powerline running the length of the car before resolving into the athletic rear haunch. Whichever Flying Spur model you look at, the DNA is unmistakably Bentley.

And wherever the eye focuses, the ear tunes in, or the finger touches, the artful meld of fine craftsmanship and intuitive design can be appreciated by all of the senses, whether driving, or being driven. The Flying Spur is a car that can shape itself to any mood – and to all moments – of even the most demanding of modern luxury lives.





## Classic design excellence.

Those who seek a Flying Spur that offers unrivalled sophistication and luxury need look no further than the Flying Spur V8 and the exquisite Flying Spur W12. The sharp, sophisticated silhouettes are perfectly counterpointed by the unparalleled luxury within their beautifully appointed cabins.

Both showcase Bentley's characteristic design DNA through familiar flowing curves, which meet crisp, clean edges to create a sleek exterior. This is adorned by chrome details as well as the unmistakable chrome matrix grille, and classic bumper design. Features such as jewel front headlamps, rear wraparound lamps with single elliptical LEDs and classic alloy wheels combine to create a commanding and sophisticated on-road presence. By day, and by night. Whether poised charismatically or powering along effortlessly at speed.

Take a closer look at the Flying Spur W12 and you will discover a luxury sedan that seamlessly melds classic Bentley design

cues with progressive styling details. Every design detail is there to be appreciated: the chrome bumper grille\* with chrome insert, striking double oval exhausts, W12 badging and 20" six tri-spoke painted and diamond-turned alloy wheels. All marry a sleekly fluid dynamism with a clean, classic design edge.

## The facts.

- Chrome matrix radiator grille
- Classic bumper design
- Black painted brake callipers
- Jewel front headlamps
- Wraparound rear lamps with single elliptical LEDs



## Sporting design edge.

Those who desire a Flying Spur with sportier looks and more performance edge can make a choice from two models. The Flying Spur V8 S is now joined by the darkly brooding Flying Spur W12 S. Both luxury sedans have a suite of eye-catching features that give clear intent to their performance potential.

Both these models project a dramatic and contemporary look. Adorned with black chrome detail, they share a host of dynamic design touches, which include gloss black matrix grille and a sports bumper design. This is a strong and distinctive feature that it shares with the Continental GT – and instantly imbues the front with a sportier feel. Dark tint front and rear lamps\* with single elliptical LEDs and twin-spoke sports alloy wheels with red painted brake callipers\*\* also combine to give the impression of a lower, meaner road presence.

The newly introduced pinnacle Flying Spur W12 S has an intense appearance with full exterior blackware, and additional

dark tint styling features. The dark tint front lamps and gloss black matrix grille feature black chrome surrounds to create this brooding tone. The Beluga rear diffuser, black lower bumper grille, 21" seven twin-spoke black wheels and W12 S badging complete the sporting look.

## The facts.

- Gloss black matrix radiator grille
- Sports bumper design
- Red painted brake callipers\*\*
- Beluga gloss rear diffuser
- Beluga gloss door mirrors\*
- Dark tint front and rear lights\*
- Wraparound rear lamps with single elliptical LEDs

PERFORMANCE



## The Flying Spur range. Performance with attitude.

The Flying Spur has always empowered its occupants with remarkable speed, high levels of torque, responsive acceleration and sports car control. Performance like this is rarely found in a super-luxury sedan.

All Flying Spur models deliver remarkable dynamic handling and an exhilarating drive. Whether you are driving the V8 powered 4.0 litre or the mighty 6.0 litre W12, all offer responsive power and seamless acceleration.

Variable displacement system technology is also featured across all four Flying Spur models. Here, the engine cylinders are intelligently managed for superior fuel efficiency by being shut

down where appropriate. Range is increased and emissions are reduced, without any loss of responsiveness. When more power is required, the engine seamlessly reactivates its full complement of cylinders without any discernible lag.

Whichever engine configuration is selected, the same 8-speed Quickshift automatic transmission ensures the car remains in optimum gear, keeping acceleration incredibly smooth, even through multiple gear changes, or on differing inclines.

In modern Bentley tradition, power is delivered to the road via one of the world's finest all-wheel drive systems, to guarantee sure-footed performance.





All-wheel drive.  
All day long.  
All year round.

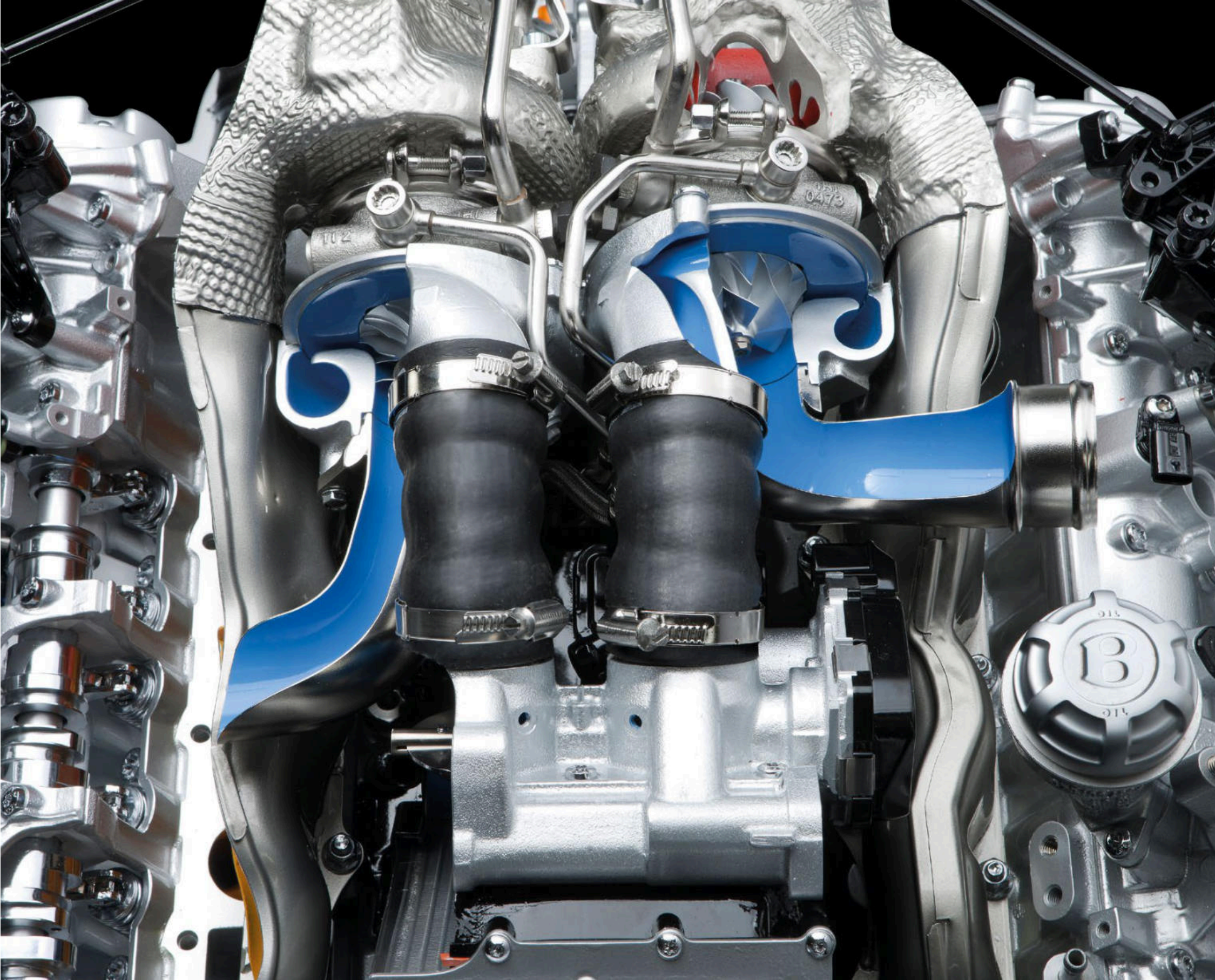
Beneath the sleek, dynamic lines of today's Flying Spur is one of the world's most advanced all-wheel drive (AWD) systems – technology that lets you experience all of life's roads, at speed and in total control.

Unlike conventional two-wheel drive systems, the advanced Torsen all-wheel drive system, combined with optimised chassis and Bentley Dynamic Ride, opens up a realm of performance unattainable in conventional luxury sedans.

The drive is automatically transferred between the front and rear axles via the highly sensitive Torsen centre differential,

instantaneously delivering more power to whichever wheels have the greater traction on the particular road surface. A 40:60 rear-biased torque split helps to sharpen agility and reduces understeer when powering through bends.

The continuous AWD allows the driver to fully exploit the power of the Flying Spur engine. Exceptional traction creates an engaging and precise drive on any road, whatever the weather. Even in less than perfect road conditions, the Flying Spur lets you experience your journey with sure-footed confidence. Any road can be appreciated. Anywhere in the world.



## The V8 engine. Drive. Dynamic.

The Flying Spur V8 engine delivers pulse-quickening acceleration in typical Bentley fashion with impressive levels of efficiency. It is an engine with a difference – an impressive combination of power, performance and economy that has been engineered to set the adrenaline flowing.

The Flying Spur V8 engine remains unrivalled amongst its competitors. The 4.0 litre V8 twin-turbocharged engine is capable of producing a formidable 521 bhp (528 PS) with phenomenal torque (680 Nm from 1,700 rpm). Controlled power that can effortlessly propel the Flying Spur from 0 to 60 mph in a startling 4.6 seconds (0 to 100 km/h in 4.9 seconds) with a top speed of 190 mph (306 km/h). The Flying Spur V8 engine delivers superb performance on all road surfaces, in any conditions.

The Flying Spur V8 S is tuned for even more performance edge and road handling agility. The suspension has been recalibrated to provide better roll control and more precise steering –

the result of continuous engineering development for a more thrilling drive, without any noticeable loss of ride refinement. With the 8-speed Quickshift automatic transmission shifted from D mode, to the sportier S mode, the throttle response is noticeably keener, even at low revs, immediately propelling the car with a controlled yet irresistible surge.

### The facts.

- 4.0 litre twin-turbocharged V8 engine
- Maximum power of 521 bhp (528 PS)
- Maximum speed: 190 mph (306 km/h)
- Maximum torque: 680 Nm (from 1,700 rpm)
- Acceleration: 0 to 60 mph in 4.6 seconds (0 to 100 km/h in 4.9 seconds)
- Variable displacement system



## The W12 engine. Drive. Powerful.

Nothing delivers torque and power quite like a Bentley W12 engine. And the resulting performance is simply exhilarating: a smooth surge of acceleration that seems to go on forever, with the capacity to cruise at high speed, in constant, unrivalled comfort.

Bentley is the world's leading producer of W12 engines – all built by hand at Bentley's centre of excellence in Crewe, England. The Flying Spur W12 engine is equipped to deliver category-leading performance. The immensely powerful 6.0 litre twin-turbocharged W12 powerplant produces 626 bhp (635 PS) and a maximum torque of 820 Nm. This phenomenal combination is put to great effect. An irresistible surge of torque powers the car from 0 to 60 mph in 4.2 seconds (0 to 100 km/h in 4.5 seconds) and irresistibly on to a maximum speed of 202 mph (325 km/h). It also offers 672 km range between refuelling stops, enabling the driver to appreciate the dynamic and responsive ride, without interruption.

For an enhanced driving experience, there is the new Flying Spur W12 S – the first four-door Bentley to

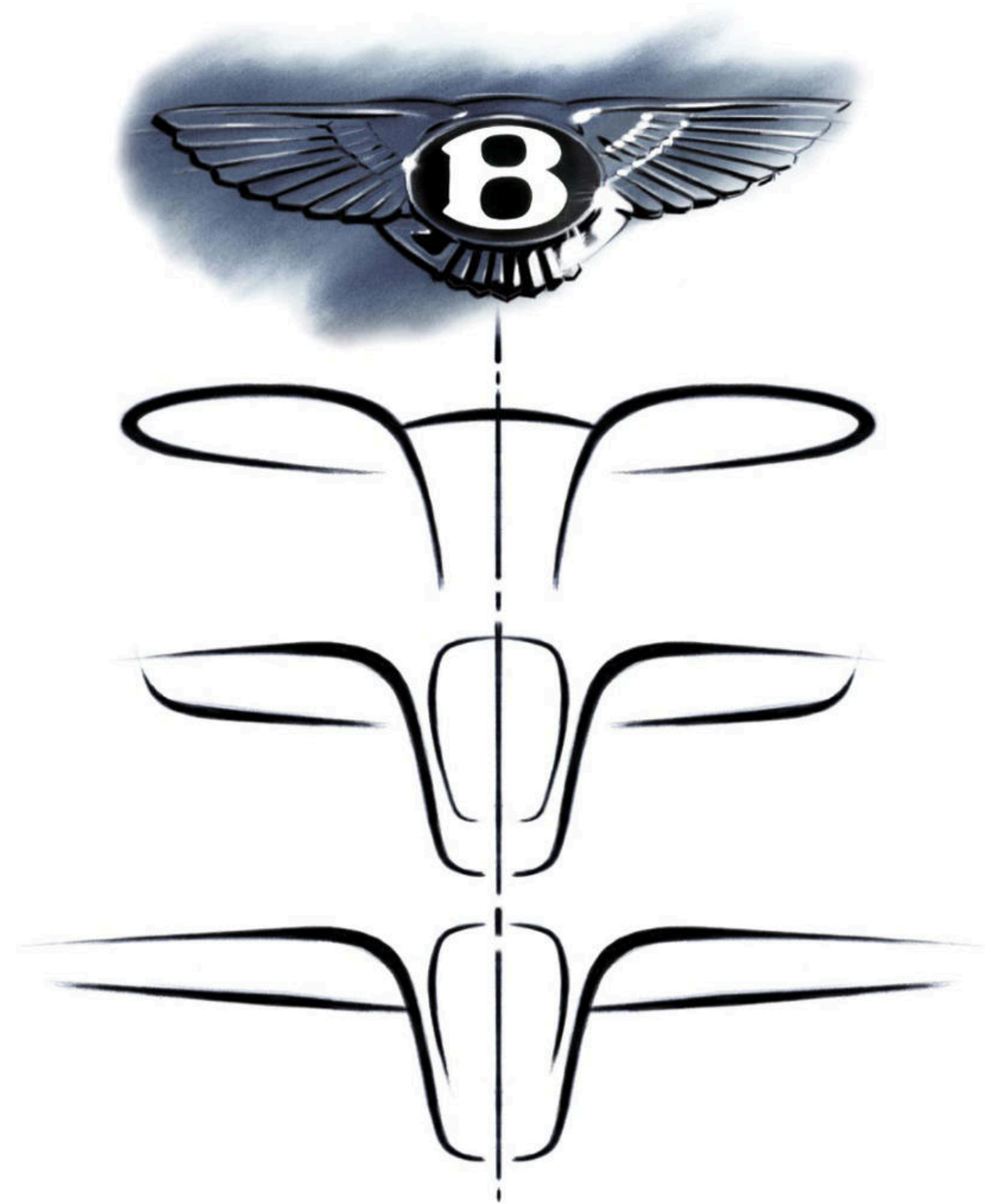
achieve a top speed in excess of 200 mph. This dynamic and powerful pinnacle model offers increased speed, power and torque, and is tuned for more performance edge and road handling agility. The recalibrated suspension provides better roll control and more precise steering. Even the most demanding of corners and conditions can be negotiated with complete confidence, and without any noticeable loss of ride refinement. With the option of carbon ceramic brakes for greater response, the Flying Spur W12 S provides the ultimate in dynamic driving control.

## The facts.

- 6.0 litre twin-turbocharged W12 engine
- Maximum power 626 bhp (635 PS)
- Maximum torque: 820 Nm (from 2,000 rpm)
- Acceleration: 0 to 60 mph in 4.2 seconds (0 to 100 km/h in 4.5 seconds)
- Variable displacement system



INTERIOR



## Inspired by wings.

The closer you look at the Flying Spur, the more you'll see. Take the sweeping elegance of the dashboard design. Spreading out from the centre, the two main sections extend elegantly like wings – the wings of the Bentley marque.

The Flying Spur features an interior cabin that has been entirely crafted by hand. Finished with only the finest natural materials, it has been designed from the outset to surround its occupants in exquisite luxury.

Polished stainless steel and your chosen leather combine with what Bentley craftsmen and women refer to as the 'ring of wood'. The beautiful veneers, carefully selected and meticulously mirror-matched, create a seamless flow of high-gloss grain that surrounds both driver and front passenger, evoking a unique sense of calm.

This inspired structure allows the fluid lines of the fascia to embrace the geometry and precision detailing of bezels, stitching and trim with perfect balance and symmetry. Like every detail in every Bentley, the cabin design of the Flying Spur also demands ever closer attention.



## Superior interior craft.

Bentley's design team have created a cabin interior that is a superb showcase of timeless artisan handcrafting skills. A seamless balance of today's technologies subtly presented with finely crafted ergonomic controls.

The aesthetic pleasures of the Flying Spur interior can be both seen and felt. Precision-engineered knurling is evident throughout the cabin and adds tactility to everyday functions. The organ stop air-vent controls have the smooth and satisfyingly solid feel of authentic legacy instruments. It is exactly this kind of thoughtful trademark Bentley engineering that makes the Flying Spur so rewarding.

Among a host of new styling options for the Flying Spur is sumptuous straight flute seating, while a smaller, sleeker diamond quilting design is available with the Mulliner Driving Specification.\* A selection of semi-aniline hides\*, amongst the highest quality in the automotive industry, are also available, while the contemporary Black Tint Aluminium\* veneer represents a new addition to the range.



## Constantly connected.

As ever with in-car technology, the difference is not simply about the technology itself – but in the manner in which it is delivered. The Flying Spur does this in impeccable Bentley style. Wherever you need to go.

The Flying Spur has a touch screen infotainment system in the front that allows both driver, and front passenger, to effortlessly operate the navigation system and adjust the audio, telephone, ride and comfort settings.

Rear passengers can operate the front infotainment system using the touch screen remote in the rear compartment. They can gain complete access to internet browsing and email via the WiFi hotspot\* and 64 GB of internal storage capacity. Whether you need to stay in touch with colleagues and clients, make a reservation or keep your passengers entertained with streamed movies and music, the Flying Spur is a car for those who choose to maximise every moment of every day.



### A touch of sophistication.

Bentley understands that everyone prefers to retain a degree of control – especially when they are in the back of the world's most desirable luxury sedan.

To that end, situated in the console at the back of every Flying Spur lies a detachable touch screen remote control. This gives rear-seat passengers access to many of the controls that, in other cars, are available exclusively to the driver. So, at the swipe of a finger, rear-seat passengers can adjust climate settings, change seat heating and ventilation levels,\* change audio settings and even access information from the navigation system.

### The facts.

- Front infotainment control, including radio and navigation system
- Heating and air conditioning controls
- Seat heating (as standard) and ventilation control\*



## Naim for Bentley. Superlative sound.

Available as an option in all Flying Spur models, the Naim for Bentley Premium Audio System was designed for those who crave not only to play their music, but to hear it reproduced at the highest attainable levels of quality.

Each of the Balanced Mode Radiator speakers combines the functions of a separate tweeter and mid-range speaker in one unit. Sited in the fascia and rear quarter panels, they make it possible to direct the sound with more accuracy, while providing greater clarity across the whole audible spectrum. The result is incredible sound, wherever you choose to sit in the remarkable Flying Spur.

## The facts.

- 1,100 watt amplifier (13 channel)
- Eight enhanced DSP modes
- 11 Naim speakers including dual Naim subwoofers
- Dynamic equalisation
- Theatre surround-sound experience



### Flying Spur interior: the facts.

- Hand-upholstered leather seats
- Chrome organ stop air-vent controls
- Touch screen remote control
- WiFi hotspot\* (cost option)
- Unique Flying Spur treadplates for each model
- Elegant straight flute or diamond-quilted\*\* seat design
- Ethically sourced, mirror-matched veneers. Including Dark Stained Madrona\*\* veneer for a more contemporary interior feel
- Alcantara headliner†
- Softer, more luxurious semi-aniline hide option†

PERSONALISING YOUR CAR





## Your Bentley. To match your world.

Whether it is the 'must have' gadget, the latest designer clothing, a favourite precision watch or a much admired work of art, you appreciate it all the more if it is something you have carefully studied and chosen for yourself. The same is true of your Flying Spur.

Bentley's approach to design allows you to express yourself fully. There are countless ways to make your Flying Spur your own – a personal, automotive work of art.

The extended paint range offers a choice of more than a hundred exterior colours including four paint finishes. Inside, the choice widens even further, with 17 hides and eight varieties of veneer to complement other options for seat piping, contrast stitching, cross-stitching and cross-banding.

With Bentley, you can start experimenting with your choices now, at [BentleyConfigurator.com](http://BentleyConfigurator.com), or by simply contacting your local Bentley retailer. Make your Flying Spur a Bentley with a difference.



- 1 Violette
- 2 Grey Violet
- 3 Pale Velvet
- 4 Havana ●
- 5 Black Velvet
- 6 Azure Purple
- 7 Magenta
- 8 Passion Pink
- 9 Rubino Red
- 10 Sunset
- 11 Damson
- 12 Burgundy
- 13 Dragon Red II
- 14 St. James' Red (Pearlescent)
- 15 St. James' Red (Solid) ■●
- 16 Candy Red
- 17 Orange Flame
- 18 Claret
- 19 Amber
- 20 Burnt Orange
- 21 Bronze
- 22 Julep
- 23 Khamun
- 24 Monaco Yellow (Solid)
- 25 Bentayga Bronze
- 26 Sunburst Gold
- 27 Special Magnolia (Pearlescent)
- 28 Gazelle
- 29 Extreme Silver Satin
- 30 Old English White (Solid)
- 31 Special Magnolia (Solid)
- 32 Camel ●
- 33 Breeze
- 34 Rose Gold
- 35 Magnolia (Solid)
- 36 Silver Storm

KEY  
 ■ Flying Spur V8 standard colours  
 ● Flying Spur V8 S, Flying Spur W12 and Flying Spur W12 S standard colours



- 37 Silver Taupe
- 38 Silver Frost
- 39 Ghost White (Pearlescent)
- 40 White Satin
- 41 Ice
- 42 Hallmark ●
- 43 Arctica (Solid)
- 44 Moonbeam ■●
- 45 Magnetic
- 46 White Sand ●
- 47 Extreme Silver
- 48 Light Grey Satin
- 49 Porcelain
- 50 Glacier White (Solid) ■●
- 51 Silver Tempest
- 52 Sandstone
- 53 Dove Grey (Solid)
- 54 Light Gazelle
- 55 Pale Brodgar
- 56 Venusian Grey
- 57 Dark Cashmere ●
- 58 Dark Grey Satin
- 59 Tungsten
- 60 Burnt Oak
- 61 Arabica
- 62 Brodgar
- 63 Granite ●
- 64 Cumbrian Green
- 65 Barnato (Solid)
- 66 Midnight Emerald ●
- 67 Light Onyx
- 68 British Racing Green 4 (Solid)
- 69 Anthracite Satin
- 70 Storm Grey
- 71 Spruce
- 72 Verdant



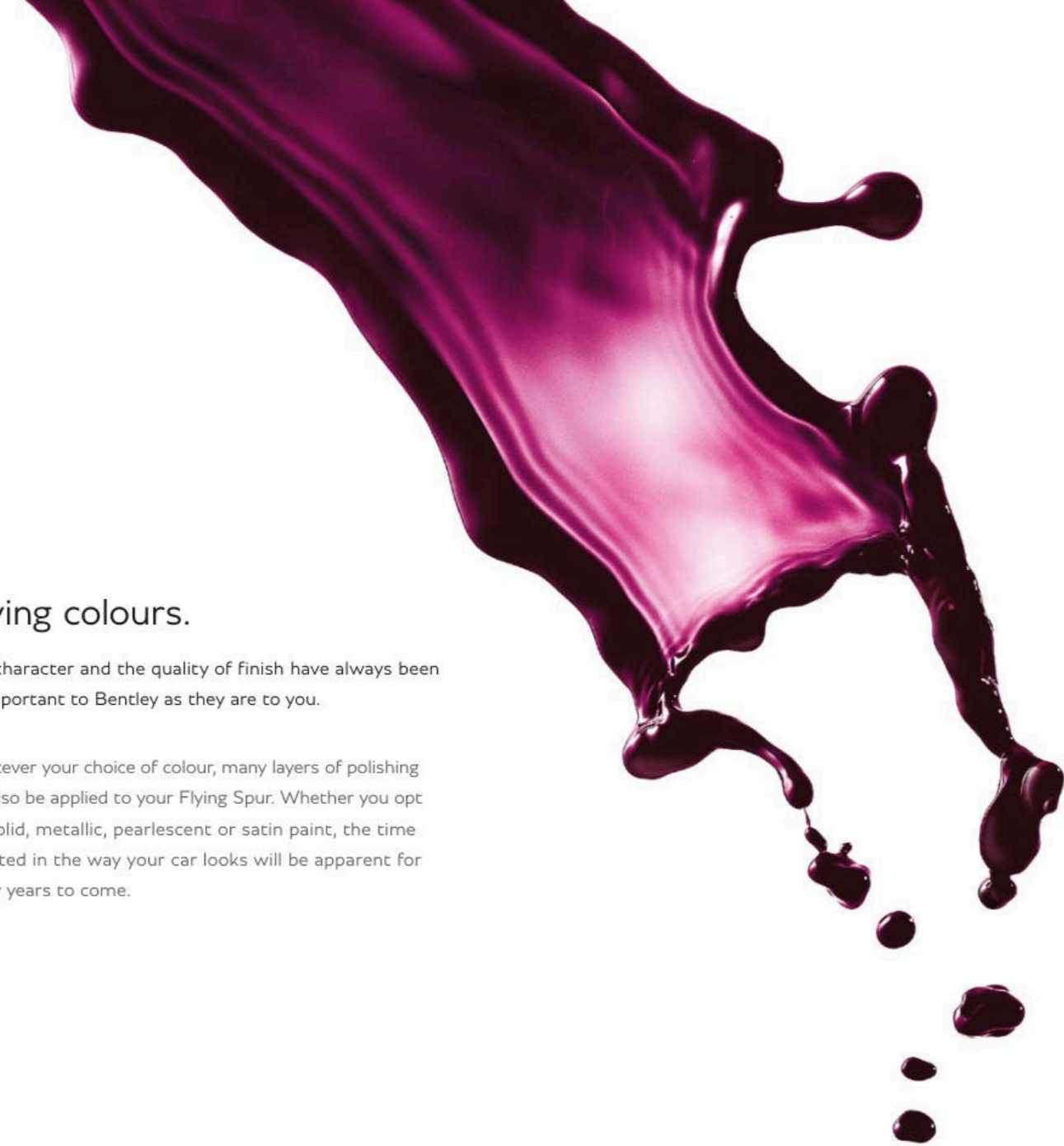
- 73 Light Emerald
- 74 Radium
- 75 Apple Green
- 76 Cypress
- 77 Alpine Green
- 78 Glacier Blue (Solid)
- 79 Jetstream II
- 80 Light Windsor Blue
- 81 Silverlake
- 82 Portofino ●
- 83 Aquamarine
- 84 Neptune
- 85 Light Sapphire
- 86 Kingfisher
- 87 Pale Sapphire
- 88 Fountain Blue
- 89 Marlin ●
- 90 Peacock
- 91 Sequin Blue
- 92 Moroccan Blue
- 93 Blue Crystal
- 94 Thunder ■●
- 95 Anthracite
- 96 Meteor ●
- 97 Windsor Blue
- 98 Dark Sapphire ■●
- 99 Onyx ■●
- 100 Titan Grey
- 101 Spectre
- 102 Beluga (Solid) ■●
- 103 Oxford Blue (Solid)
- 104 Black Crystal
- 105 Black Sapphire
- 106 Royal Ebony

Please note, the colours reproduced are for representation purposes only and therefore vary slightly from the actual vehicle.

## Flying colours.

The character and the quality of finish have always been as important to Bentley as they are to you.

Whatever your choice of colour, many layers of polishing will also be applied to your Flying Spur. Whether you opt for solid, metallic, pearlescent or satin paint, the time invested in the way your car looks will be apparent for many years to come.



## The perfect match.

There is no better way to make your car truly different than to specify a colour of your own.

Our paint specialists are able to match any colour you bring to them, reproducing it on the mirror-like finish of your Flying Spur's bodywork – and, if you wish, throughout the interior too. Whether it's a camera, a nail varnish, or something else that captures your imagination, the hue can be matched exactly by our team of experts.\*



\*This colourway has been uniquely matched by Bentley. It is unavailable through Leica, but other options are available as part of the Leica A La Carte programme.



### Fine line.

Fine lines can add a distinctive flourish to your Flying Spur.

These subtle additions heighten the definition of your chosen exterior finish. And when it comes to their application, attention to detail is paramount. Every fine line applied to your Flying Spur is painted by hand. You can select from a range of 28 colours, chosen to complement your car perfectly. Consider it your own personal finishing touch.



### Wheels unlike any other.

All Bentley wheels are designed in Crewe, by the same team of experts that design the cars.

The wheel designs available for the Flying Spur have been created with careful attention to the car's sleek lines, to ensure they complement it perfectly. They are handmade in the factory, polished and, in some cases, painted by hand. And when you look closely, the difference is clear.

Whatever your tastes or style, there is a wheel to match, with wheels available in a variety of finishes from painted to polished, from dark tint to black gloss.



19" CLASSIC ALLOY WHEELS - PAINTED



20" SIX TRI-SPOKE ALLOY WHEELS - PAINTED



20" SIX TRI-SPOKE ALLOY WHEELS - PAINTED AND DIAMOND TURNED



20" SIX TRI-SPOKE ALLOY WHEELS - GRAPHITE AND DIAMOND TURNED



21" SIX TWIN-SPOKE ALLOY WHEELS - PAINTED



21" SIX TWIN-SPOKE ALLOY WHEELS - POLISHED



21" SIX TWIN-SPOKE ALLOY WHEELS - BLACK MACHINED



21" SEVEN TWIN-SPOKE WHEEL - BLACK PAINTED



21" FIVE-SPOKE DIRECTIONAL SPORTS WHEEL - DART TINT



21" TEN-SPOKE PROPELLER ALLOY WHEELS - PAINTED



21" TEN-SPOKE PROPELLER ALLOY WHEELS - POLISHED



21" SEVEN TWIN-SPOKE ALLOY WHEELS - POLISHED



21" SEVEN TWIN-SPOKE ALLOY WHEELS - GRAPHITE AND DIAMOND TURNED



20" OPEN-SPOKE ALLOY WHEELS - PAINTED



20" OPEN-SPOKE ALLOY WHEELS - POLISHED



20" OPEN-SPOKE ALLOY WHEELS - DARK TINT



21" FIVE-SPOKE DIRECTIONAL SPORTS WHEEL - BLACK



### Layer upon layer of beauty.

All the beautiful wood veneer throughout the Flying Spur cabin is ethically sourced.

Cured for 72 hours, it is then treated with five layers of clear lacquer to enhance its natural beauty. The result is a series of stunning, mirror-matched surfaces that flow seamlessly into the soft, tactile leather.

For a unique look, Black Tint Aluminium is available to adorn both fascia and door waistrails of the new Flying Spur W12 S.





Tamo Ash



Chestnut



Madrona



Burr Walnut



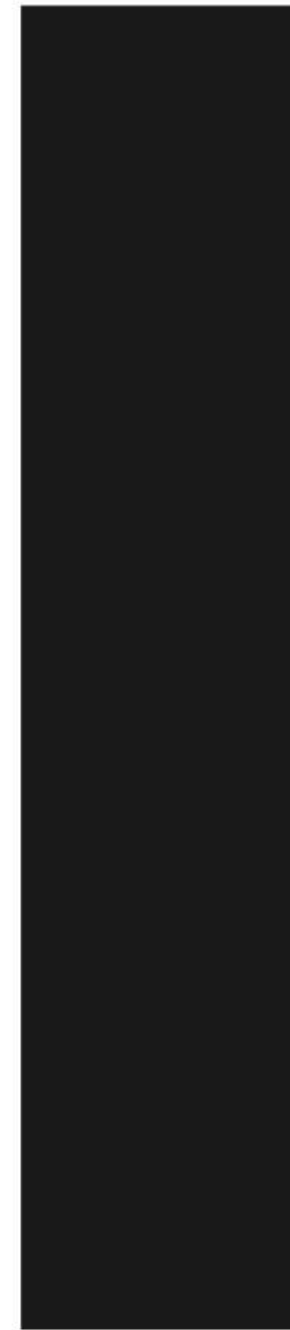
Dark Fiddleback  
Eucalyptus



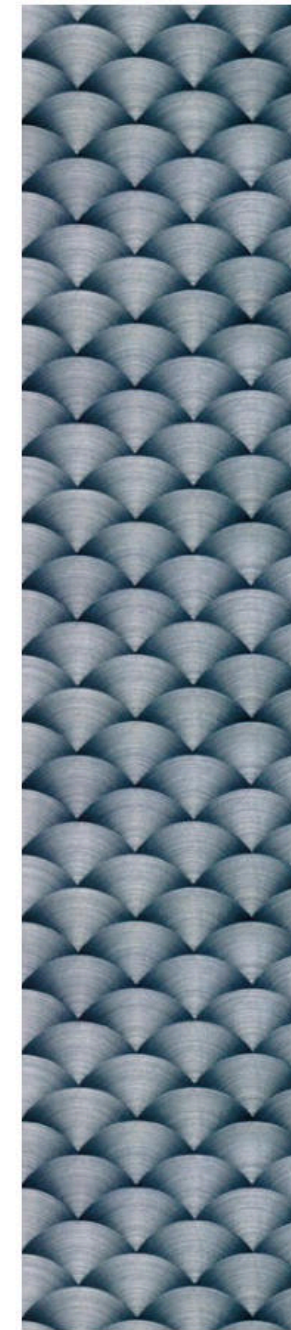
Dark Stained Burr Walnut



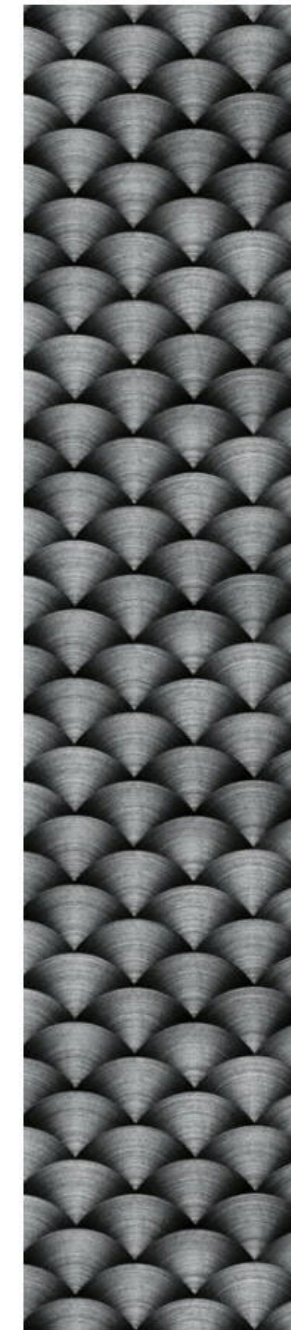
Dark Stained Madrona



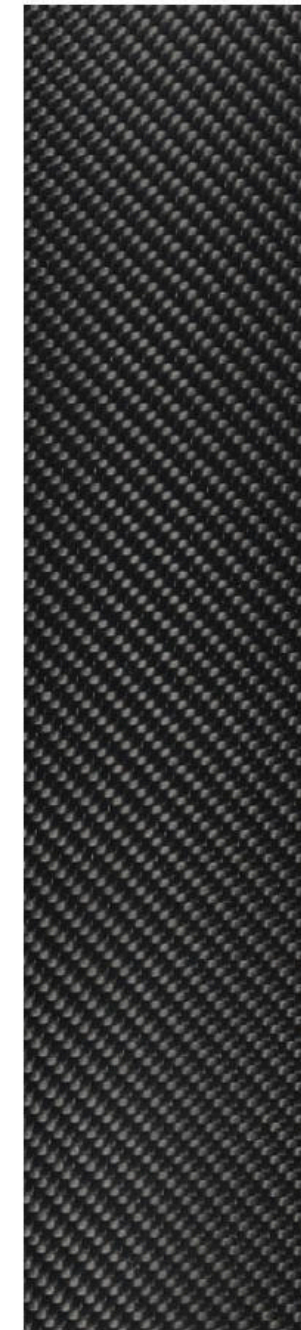
Piano Black



Bright Tint Aluminium



Black Tint Aluminium



Carbon Fibre

For standard veneers and model applicability please refer to the Specifications and Options section from page B6 for each model. Please note, the colours reproduced are for representation purposes only and therefore vary slightly from the actual vehicle.

## Touch and feel the difference.

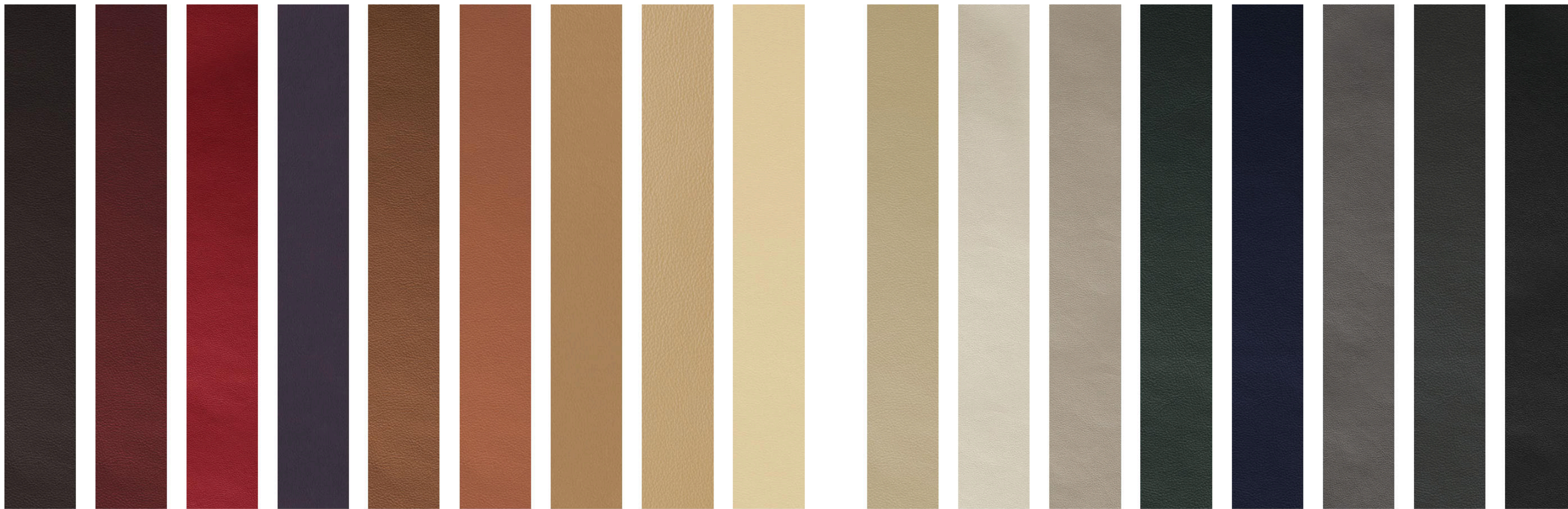
The hides used to upholster the Flying Spur's cabin are among the finest used in the automotive industry.

Only other Bentley interiors are crafted with such dedication and attention to detail. The natural leather aroma, reminiscent of classic Bentley interiors, is the result of hides of the highest quality, which are dyed in a range of 17 colours, with bespoke hues available on request.

They are tested to Bentley's highest possible durability standards. First, against ultraviolet radiation and then for heat resistance by subjecting them to a constant temperature of 120°C for a whole week.

For true leather connoisseurs the softer finish of semi-aniline hides\* can be specified when commissioning your chosen Flying Spur. The difference is subtle, yet for those with a true appreciation of the finest natural materials, it can be striking.





Burnt Oak

Fireglow

Hotspur

Damson

Saddle

Newmarket Tan

Camel

Saffron

Magnolia

Shortbread

Linen

Portland

Cumbrian Green

Imperial Blue

Porpoise

Brunel

Beluga



### Interior options.

- Leather and veneer steering wheel
- Rear seat bottle cooler
- Choice of five interior colour splits (plus unique options for the Flying Spur V8 S and the new Flying Spur W12 S)
- Contrast stitching, cross-stitching and seat piping
- Deep pile carpets
- Electric, glass tilt and slide sunroof
- Veneered picnic tables – with or without vanity mirrors
- Storage case to centre console

## Your bespoke Bentley, by Mulliner.

The Mulliner family began making saddles in the 16th century. From there, they moved onto carriages and, as the 20th century dawned, coach-built bodies for some of the world's first motor cars. They built the bodies of many early Bentleys, striking up a creative partnership that would endure to the present day.

Today, the Mulliner workshop undertakes every bespoke Bentley project. From monogrammed upholstery and bespoke stowage to the kind of tailored body modifications that can only be undertaken by a skilled coachbuilder, the Mulliner team delivers luxury on a new level. Bentley's personal commissioning department can make yours an automobile with a difference – your own unique Bentley.

Mulliner's Bespoke Hide service, for example, enables you to commission a hide colour to match any sample you provide. Whether it's the hue of a particular suit, camera, lipstick or the coat of your favourite racehorse.

With Mulliner you can choose to personalise specific elements of your Bentley. The new Refrigerated Bottle Cooler with

frosted glass and bespoke crystal champagne flutes is a great way to enjoy a drink on the move. The cooler is discreetly hidden behind a door between the rear passenger seats and features a powered, frosted glass cover and white LED lighting. It also offers holders for two bespoke champagne flutes and another bottle in a canted position.

Mulliner also specialises in conceiving ingenious, stylish and convenient stowage solutions for anything from your cigars of choice or perhaps a timepiece saved for special occasions, to an atomiser for that last-minute refresh before exiting your car. Mulliner truly understands the importance of bestowing your own individual identity on your Bentley. You may want to have your name or logo integrated on to the treadplates – which can also be illuminated – or your personal mark can take the form of specially created badge, beautifully embroidered, embossed or debossed onto the hide for a highly personal finish. Mulliner can also include symbols or wording in the marquetry of the dashboard.

Whatever you imagine, Mulliner can realise – creating personal touches that will adorn your Flying Spur, and your life, each and every day.





## Your choice.

For many people, the sheer pleasure of commissioning a bespoke Bentley Flying Spur is all about finding that perfect combination of interior and exterior colours. Should you wish, our retailers will guide you through exquisite selections of paint, veneer, hide and stitching. It is a journey to relish – and one that is virtually limitless in terms of choice and combinations.

However, should you already wish to begin choosing your personal commission, or simply want to experiment in your own time in the comfort of your own home, there is now a quick and highly satisfying process to aid you.

### **Bentley's Car Configurator.**

This highly sophisticated online tool offers you the most realistic bespoke Flying Spur experience possible. Once you've created your Flying Spur, the highly accurate representation can then be saved and emailed to your retailer.

The Configurator can be viewed here:  
[www.BentleyConfigurator.com](http://www.BentleyConfigurator.com)

WORLD OF BENTLEY



VAL DE VIE



VAL DE VIE





VALVE CAPS

## Accessories.

All accessories for the Flying Spur are tested to Bentley's high standards, and Crewe's designers and engineers are closely involved in setting the specifications for each accessory.

The Bentley range includes protective personalised car covers for indoor and outdoor use, self-righting wheel centre badges and winter traction aids for snow and ice. The jewelled Bentley torch features the Bentley 'B' etched into the lens, while a child seat trimmed with Bentley upholstery can be embroidered with your child's name. For details of the full accessories range, please contact your Bentley retailer, or simply visit our online store at [Shop.BentleyMotors.com](http://Shop.BentleyMotors.com)



PERSONALISED CHILD SEAT  
(GROUPS 2+3)



FLYING SPUR SCALE MODEL CAR



JEWELLED TORCH



PERSONALISED CAR COVER



CHILD SEAT (GROUP 1)



CONTINENTAL HANDBAG (BURNT OAK)



LUGGAGE TAG



2-IN-1 LANYARD

## Bentley Collection.

In the Bentley Collection, contemporary design meets the finest materials. From Cashmere throws to bespoke luggage sets and bags inspired by the brand's early days, every item embodies the essence of the Bentley marque – unparalleled craftsmanship and incredible attention to detail.

To view our full Bentley Collection, please contact your local Bentley retailer or visit our online store at [BentleyCollection.com](http://BentleyCollection.com)



MATRIX GRILLE TIES (RED AND LIGHT BLUE)



## Bentley events.

Every year, Bentley runs a series of events exclusively for Bentley drivers, enthusiasts and those looking for a more rewarding set of experiences and a closer acquaintance with the Bentley Brand.

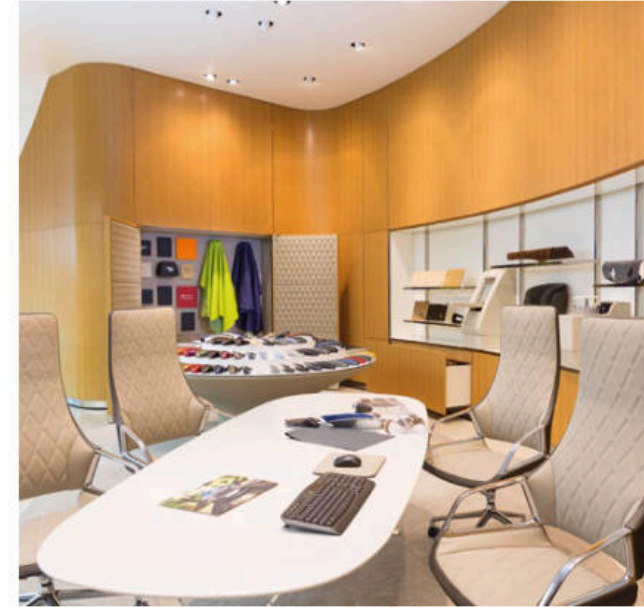
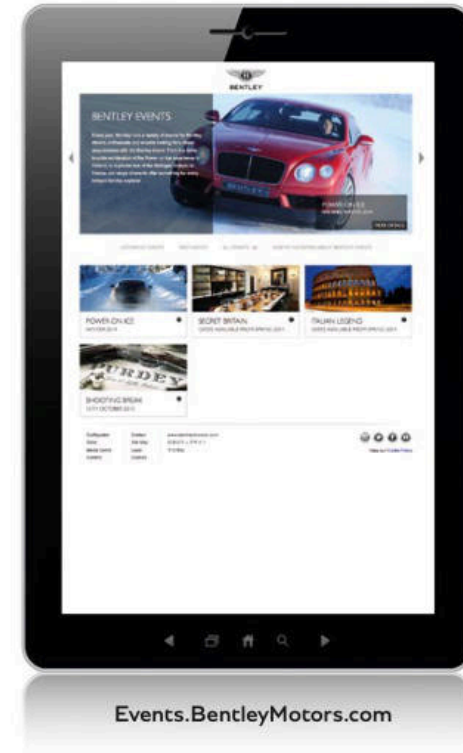
There is the pure exhilaration of our Extraordinary World events, which now open up incredible adventures in South America, with off-roading across the multiple terrains and vast panoramas of Chile and Bolivia. Or you can experience grand tours through some of Europe's most impressive landscapes.

To discover more, visit [Events.BentleyMotors.com](http://Events.BentleyMotors.com)

## Financing your Flying Spur.

We tailor our finance agreements to ensure you make the most of your investment. While other financiers look only at their customer, our experts create bespoke packages, based not just on your personal circumstances, but also on the car you commission.

To discover more, please visit your local Bentley retailer or visit [BentleyMotors.com](http://BentleyMotors.com)



## The Bentley Experience.

The Bentley Experience begins at CW1 House, offering you an immersive and memorable brand experience at the home of the Bentley factory in Crewe – where each and every one of our cars is crafted to perfection.

The CW1 House showroom contains the full model range with a brand new Personalisation area, bespoke Mulliner room and dedicated boutique, giving you a clear window into the world of the Bentley brand.

With the opportunity to visit Bentley's factory, the Bentley Experience offers a unique insight into the world-class design and engineering required to create a Bentley motor car. Factory visits are available exclusively to customers.

When you commission your Bentley in person, you will discover exactly what craftsmanship means. A Customer Host will tailor every detail of your visit to your time, tastes and interests, right down to selecting the colour of thread used to hand cross-stitch the interior you desire. Whether you have an hour to spare or a whole day, seeing the way your car is made will only accentuate the pleasure of owning it.

To book a factory visit, please contact your local Bentley retailer.





SPECIFICATIONS AND OPTIONS

## Flying Spur V8

### STANDARD SPECIFICATION

#### BRAKES

- Brake system with Electronic Stability Programme (ESP), Antilock Braking System (ABS), Electronic Brake Force Distribution (EBD), Hydraulic Brake Assistance (HBA), Drag Torque Control (MSR) and aquaplane detection
- Front vented disc brakes 405 x 36 mm (Bentley branded black painted brake callipers)
- Rear vented disc brakes 335 x 22 mm (black painted callipers)
- Electronic parking brake with drive away assist
- Brake pad wear indicator

#### WHEELS

- Wheels size: 19" Classic alloy wheels – painted
- Electronic tyre pressure monitoring system (TPMS)

#### STEERING

- Type: Speed sensitive power steering

#### SUSPENSION

- Front: Four link double wish-bones, computer controlled self-levelling air suspension, with anti roll-bar
- Rear: Trapezoidal multi-link, computer-controlled self-levelling air suspension, with anti roll-bar
- Damping: Air springs with continuous damping control (CDC)

#### EXTERIOR

- Seven paint colour choices: St. James' Red, Moonbeam, Beluga, Onyx, Glacier White, Dark Sapphire or Thunder
- Chrome Bentley matrix grille integrated into bonnet with black lower bumper grille and black 'wing' insert
- 'B' chrome 'wing' vent detail on black grille
- Rear diffuser
- Bi-Xenon projector headlamps with LED signature daylight running lamps, LED main beam supplementation, integrated washer jets
- Full LED rear lamps with ellipse within an ellipse-effect inner lamp treatment
- Rear fog and reverse lamps integrated into the lower bumper
- Rear high-level brake light
- Twilight sensor control and tunnel detection for lighting
- Door area lighting in lower edge of exterior mirrors and entrance lighting in lower edge of each door

- Colour coded electronically adjustable door mirrors with heating, power fold, memory functions and signal repeaters
- Power latching to driver and passenger doors for easy entry and exit
- Rain sensing windscreen wipers
- Power open and close boot system
- Acoustic layer to glass
- Keyless entry and ignition
- Door edge light
- Standard fuel filler cap
- Central locking with remote boot release
- Twin figure-of-eight chrome exhaust finishers
- Wheel bolts with security bolt
- Steel monocoque body structure

#### INTERIOR

- Full premium grade hide interior with a choice of four colours: Beluga, Imperial Blue, Porpoise or Newmarket Tan
- Straight flute seat design
- Bench rear seat system, plus two position manual headrest height adjustment to outer seats
- Mono-tone colour split
- Dark Fiddleback Eucalyptus veneer to fascia panels, console and door waistrails
- Eliade headlining in four colours
- Boot carpet in Beluga
- Single tone, three spoke, hide trimmed steering wheel
- Single front armrest
- Short rear console
- Driver's front seat 14-way adjustment including memory and lumbar
- Passenger front seat 14-way adjustment including memory and lumbar
- Electric tilt and reach adjustment steering column with memory and easy entry functions
- Standard foot pedals
- Footwell and front and rear console storage illumination
- Two 12V sockets in the front face of the middle of the rear seat and a rear armrest with top lid and twin cup holder
- Dashboard-mounted clock by Breitling
- Bulls-eye air vents with chrome organ stop controls
- Treadplates with embossed 'BENTLEY'
- ISOFIX rear seat fixings

#### TECHNOLOGY

- Front screen infotainment system with 8" high-resolution screen and incorporating AM / FM radio, HDD navigation, external media interface, single DVD / CD slot, single SD card slot, integrated HVAC controls, telephone control with Bluetooth® wireless connectivity, suspension settings and TPMS features – voice activation on infotainment system features\*
- Touch screen remote (TSR) in the rear, located in the rear of the centre console and presented in a cradle. Main interface for rear environment control, media interface with front infotainment system and provides vehicle information
- 8-channel, 8 speaker audio system with Balanced Mode Radiator (BMR) speakers
- Multi-zone automatic climate control system
- Park distance control with graphic on infotainment screen and audible warning
- Driver and front passenger airbag with front passenger deactivation and driver's knee airbag\*
- Front and rear curtain and thorax airbags
- Volumetric ultrasonic alarm
- Engine start / stop button
- Satellite radio (Sirius)\*

#### OPTIONAL SPECIFICATION

#### EXTERIOR

- 99 additional exterior paint colours and the bespoke colour matching service
- Fine line hand painted to the side profile in 28 colours
- Electric glass tilt and slide sunroof (no cost option)
- Electric glass tilt and slide sunroof with solar cells to power additional cooling
- 20" Six tri-spoke alloy wheels – painted
- 20" Six tri-spoke alloy wheels – painted and diamond turned
- 21" Ten-spoke propeller alloy wheels – painted
- 21" Ten-spoke propeller alloy wheels – polished
- 21" Six twin-spoke alloy wheels – painted
- 21" Six twin-spoke alloy wheels – polished
- 21" Seven twin-spoke alloy wheels – polished (only available when Mulliner Driving Specification is selected)
- 21" Seven twin-spoke alloy wheels – graphite and diamond turned (only available when Mulliner Driving Specification is selected)
- 20" Six tri-spoke alloy wheels – graphite and diamond turned (only available when Mulliner Driving Specification is selected)
- 20" Space saving spare wheel and tyre in lieu of tyre inflation kit\*
- Standard brakes with red painted callipers
- Bright boot finisher
- Jewel fuel and oil filler caps

#### INTERIOR

- Choice of additional veneers: Burr Walnut, Chestnut, Dark Stained Burr Walnut, new Dark Stained Madrona, Madrona, Piano Black or Tamo Ash
- Choice of 13 additional hide colours: Brunel, Burnt Oak, Camel, Cumbrian Green, Damson, Fireglow, Hotspur, Linen, Magnolia, Portland, Saddle, Saffron or Shortbread
- 4 + 1 seat configuration (rear seat lumbar, adjustable and heated outer positions)
- Full-length centre console with closing tambour door
- Choice of four duo-tone colour splits
- Veneered centre console storage – one or two storage cases
- Veneered picnic tables to rear of front seats
- Veneered picnic tables with vanity mirrors to rear of front seats
- Duo-tone, three spoke, hide trimmed steering wheel

- Heated, single tone, three spoke, hide trimmed steering wheel
- Sports, single tone, three spoke, hide trimmed steering wheel
- Sports, duo-tone, three spoke, hide trimmed steering wheel
- Wood and hide, three spoke, trimmed steering wheel (not available in Dark Fiddleback Eucalyptus or Dark Stained Madrona)
- Steering column mounted gear selectors
- Boot carpet matched to main or secondary hide
- Contrast binding to interior carpet overmats
- Contrast binding to boot carpets
- Contrast stitching to seats, headrests, door casings, fascia and centre console
- Stitching to steering wheel in a contrast colour
- Hand cross-stitching to the seats, headrests and door casings
- Embroidered Bentley 'wings' to the front and rear headrests
- Seat piping and single stitch to seats and headrests
- Chrome inlay to waistrails
- Contemporary cross-banding to fascia, door waistrails and picnic tables if chosen (only available with Burr Walnut and Chestnut veneers)
- Bright Tint Aluminium to fascia and door waistrails
- Climate boost for rear seat passengers\*
- Privacy glass to rear screen and rear side windows\*
- Twin front armrests
- Sports drilled foot pedals
- Knurled sports gear lever
- Jewel fuel and oil filler caps
- Deep pile overmats to front and rear (in lieu of standard mats)
- Lambswool rugs for front and rear (in addition to standard overmats)

#### ENTERTAINMENT

- Naim for Bentley Premium Audio System – with enhanced surround-sound for the ultimate audio experience
- Six disc CD changer fitted in glove box
- TV tuner\*
- WiFi hotspot – 3G enabled\*
- WiFi hotspot – 4G enabled\*
- SIM card reader with maps and points of interest\*

#### CONVENIENCE

- Adaptive cruise control\*
- Rear view camera\*
- Rear refrigerated bottle cooler – located behind the rear centre armrest
- Electronically operated blinds to rear windows
- Privacy telephone handset with two cradles and SIM card reader
- Two ashtrays and three cigar lighters
- Valet key
- Battery charger\*
- First aid kit and warning triangle
- Remote control garage / electronic gate opener
- GPS tracking system provision, in addition to standard alarm system\*
- GPS tracking system full fitment, in addition to standard alarm system\*

#### PACKAGES

- Mulliner Driving Specification
- Convenience Specification
- Comfort Specification
- Rear Passenger Specification
- Colour Specification
- Interior Style Specification with contrast stitching
- Interior Style Specification with hand cross-stitching

\*Regional applicability. Certain options and specifications may appear as standard or may not be available. Please contact your local retailer for more information.

## Flying Spur V8 S

### STANDARD SPECIFICATION (IN ADDITION TO THE FLYING SPUR V8 STANDARD SPECIFICATION)

#### BRAKES

- Front vented disc brakes 405 x 36 mm (Bentley branded red painted brake callipers)
- Rear vented disc brakes 335 x 22 mm (red painted callipers)

#### WHEELS

- 20" Open-spoke alloy wheels – painted

#### SUSPENSION

Damping: A recalibrated sports focused suspension tuning. Air springs with Continuous Damping Control (CDC)

#### EXTERIOR

- 17 paint colour choices: St. James' Red, Moonbeam, Beluga, Onyx, Glacier White, Dark Sapphire, Thunder, Granite, Hallmark, White Sand, Havana, Midnight Emerald, Meteor, Marlin, Camel, Portofino or Dark Cashmere
- Gloss black Bentley matrix grille with bright surround and centre strip
- Gloss black lower bumper grille with sports bumper design
- 'V8 S' rear pillar badges (no cost option)
- Unique Flying Spur V8 S treadplates to front and rear
- Beluga gloss rear diffuser

#### INTERIOR

- Full premium grade hide interior with a choice of 17 colours: Beluga, Imperial Blue, Linen, Porpoise, Newmarket Tan, Camel, Saddle, Burnt Oak, Damson, Magnolia, Shortbread, Hotspur, Portland, Brunel, Saffron, Cumbrian Green or Fireglow
- Piano Black veneer to fascia panels, console and door waistrails. Dark Fiddleback Eucalyptus available as a no cost option
- Sports, single tone, three spoke, hide trimmed steering wheel
- Knurled sports gear lever
- Choice of six colour splits: Five duo-tone (including a colour split unique to Flying Spur V8 S) and one mono-tone
- Leather headliner
- 4 + 1 seat system with adjustable rear outer seats and fixed centre section, four-way lumbar adjustment and seat heating to outer seats
- Steering column mounted gear selectors
- Heated rear seats

### OPTIONAL SPECIFICATION

#### EXTERIOR

- 89 additional exterior paint colours and the bespoke colour matching service
- Fine line hand painted to the side profile in 28 colours
- Electric glass tilt and slide sunroof (no cost option)
- Electric glass tilt and slide sunroof with solar cells to power additional cooling
- 20" Open-spoke alloy wheels – polished
- 20" Open-spoke alloy wheels – dark tint
- 21" Six twin-spoke alloy wheels – painted
- 21" Six twin-spoke alloy wheels – polished
- 21" Six twin-spoke alloy wheels – black machined (only available when Mulliner Driving Specification is selected)
- 21" Ten-spoke propeller alloy wheels – polished
- 21" Ten-spoke propeller alloy wheels – painted
- 20" Space saving spare wheel and tyre in lieu of tyre inflation kit\*
- Dark tint front and rear lights
- Beluga gloss door mirrors
- Bright boot finisher
- Jewel fuel and oil filler caps
- Standard brakes with black painted callipers
- Carbon ceramic vented brakes with black painted callipers
- Carbon ceramic vented brakes with red painted callipers

#### INTERIOR

- Choice of additional veneers: Chestnut, Burr Walnut, Dark Fiddleback Eucalyptus (no cost option), Dark Stained Burr Walnut, new Dark Stained Madrona, Madrona or Tamo Ash
- Alcantara headliner
- Semi-aniline hide
- Full-length centre console with closing tambour door
- Veneered centre console storage – one or two storage cases
- Veneered picnic tables to rear of front seats
- Veneered picnic tables with vanity mirrors to rear of front seats
- Duo-tone, three spoke, hide trimmed steering wheel

- Heated, single tone, three spoke, hide trimmed steering wheel
- Single tone, three spoke, hide trimmed steering wheel
- Sports, duo-tone, three spoke, hide trimmed steering wheel
- Wood and hide, three spoke, trimmed steering wheel (not available in Dark Fiddleback Eucalyptus or Dark Stained Madrona)
- Boot carpet matched to main or secondary hide
- Contrast binding to interior carpet overmats
- Contrast binding to boot carpets
- Contrast stitching to seats, headrests, door casings, fascia and centre console
- Stitching to steering wheel in a contrast colour
- Hand cross-stitching to the seats, headrests and door casings
- 'V8 S' emblem stitching to headrests
- Embroidered Bentley 'wings' to the front and rear headrests
- Seat piping and single stitch to seats and headrests
- Chrome inlay to waistrails
- Contemporary cross-banding to fascia, door waistrails and picnic tables if chosen (only available with Burr Walnut and Chestnut veneers)
- Bright Tint Aluminium to fascia and door waistrails
- Climate boost for rear seat passengers\*
- Privacy glass to rear screen and rear side windows\*
- Twin front armrests
- Sports drilled foot pedals
- Jewel fuel and oil filler caps

- Deep pile overmats to front and rear (in lieu of standard mats)

- Lambswool rugs for front and rear (in addition to standard overmats)

### ENTERTAINMENT

- Naim for Bentley Premium Audio System – with enhanced surround-sound for the ultimate audio experience
- Six disc CD changer fitted in glove box
- TV tuner\*
- WiFi hotspot – 3G enabled\*
- WiFi hotspot – 4G enabled\*
- SIM card reader with maps and points of interest\*

### CONVENIENCE

- Adaptive cruise control\*
- Rear view camera\*
- Rear refrigerated bottle cooler – located behind the rear centre armrest
- Electronically operated blinds to rear windows
- Privacy telephone handset with two cradles and SIM card reader
- Two ashtrays and three cigar lighters
- Valet key
- Battery charger\*
- First aid kit and warning triangle
- Remote control garage / electronic gate opener
- GPS tracking system provision, in addition to standard alarm system\*
- GPS tracking system full fitment, in addition to standard alarm system\*

### PACKAGES

- Mulliner Driving Specification
- Convenience Specification
- Comfort Specification
- Rear Passenger Specification
- Interior Style Specification with contrast stitching
- Interior Style Specification with hand cross-stitching

\*Regional applicability. Certain options and specifications may appear as standard or may not be available. Please contact your local retailer for more information.

## Flying Spur W12

### STANDARD SPECIFICATION (IN ADDITION TO THE FLYING SPUR V8 STANDARD SPECIFICATION)

#### WHEELS

- 20" Six tri-spoke alloy wheels – painted and diamond turned

#### EXTERIOR

- 17 paint colour choices: St. James' Red, Moonbeam, Beluga, Onyx, Glacier White, Dark Sapphire, Thunder, Granite, Hallmark, White Sand, Havana or Midnight Emerald, Meteor, Marlin, Camel, Portofino or Dark Cashmere
- Chrome Bentley matrix grille integrated into bonnet with black lower bumper grille and chrome 'wing' insert
- 'W12' rear pillar badges (no cost option)
- Oval chrome exhaust finishers
- Bright boot finisher

#### INTERIOR

- Full premium grade hide interior with a choice of 17 colours: Beluga, Imperial Blue, Linen, Porpoise, Newmarket Tan, Camel, Saddle, Burnt Oak, Damson, Magnolia, Shortbread, Hotspur, Portland, Brunel, Saffron, Cumbrian Green or Fireglow
- Burr Walnut veneer to fascia panels, console and door waistrails. Dark Fiddleback Eucalyptus available as a no cost option
- Choice of five colour splits: Four duo-tone and one mono-tone
- Leather headliner
- 4 + 1 seat system with adjustable rear outer seats and fixed centre section, four-way lumbar adjustment and seat heating to outer seats
- Twin front armrests
- Climate boost for rear seat passengers\*
- Electronically operated blinds to rear windows
- Comfort Specification: Front and rear seat ventilation and massage, front passenger seat movement controlled from rear compartment, front seat cushion extension adjustment

### OPTIONAL SPECIFICATION

#### EXTERIOR

- 89 additional exterior paint colours and the bespoke colour matching service
- Fine line hand painted to the side profile in 28 colours
- Electric glass tilt and slide sunroof (no cost option)
- Electric glass tilt and slide sunroof with solar cells to power additional cooling
- 19" Classic alloy wheels – painted (no cost option)
- 20" Six tri-spoke alloy wheels – painted (no cost option)
- 21" Six twin-spoke alloy wheels – painted
- 21" Six twin-spoke alloy wheels – polished
- 21" Seven twin-spoke alloy wheels – polished (only available when Mulliner Driving Specification is selected)
- 21" Seven twin-spoke alloy wheels – graphite and diamond turned (only available when Mulliner Driving Specification is selected)
- 21" Ten-spoke propeller alloy wheels – painted
- 21" Ten-spoke propeller alloy wheels – polished
- 20" Space saving spare wheel and tyre in lieu of tyre inflation kit\*
- Chrome lower bumper grille
- Jewel fuel and oil filler caps
- Standard brakes with red painted callipers
- Carbon ceramic vented brakes with black painted callipers
- Carbon ceramic vented brakes with red painted callipers

#### INTERIOR

- Choice of additional veneers: Chestnut, Dark Fiddleback Eucalyptus (no cost option), Dark Stained Burr Walnut, new Dark Stained Madrona, Madrona, Piano Black or Tamo Ash
- Alcantara headliner
- Semi-aniline hide
- Full-length centre console with closing tambour door
- Veneered centre console storage – one or two storage cases
- Veneered picnic tables to rear of front seats

- Veneered picnic tables with vanity mirrors to rear of front seats
- Duo-tone, three spoke, hide trimmed steering wheel
- Heated, single tone, three spoke, hide trimmed steering wheel
- Sports, single tone, three spoke, hide trimmed steering wheel
- Sports, duo-tone, three spoke, hide trimmed steering wheel
- Wood and hide, three spoke, trimmed steering wheel (not available in Dark Fiddleback Eucalyptus or Dark Stained Madrona)
- Steering column mounted gear selectors
- Boot carpet matched to main or secondary hide
- Contrast binding to interior carpet overmats
- Contrast binding to boot carpets
- Contrast stitching to seats, headrests, door casings, fascia and centre console
- Stitching to steering wheel in a contrast colour
- Hand cross-stitching to the seats, headrests and door casings
- Embroidered Bentley 'wings' to the front and rear headrests
- Seat piping and single stitch to seats and headrests
- Chrome inlay to waistrails
- Contemporary cross-banding to fascia, door waistrails and picnic tables if chosen (only available with Burr Walnut and Chestnut veneers)
- Bright Tint Aluminium to fascia and door waistrails
- Privacy glass to rear screen and rear side windows\*
- Sports drilled foot pedals
- Knurled sports gear lever
- Jewel fuel and oil filler caps
- Deep pile overmats to front and rear (in lieu of standard mats)
- Lambswool rugs for front and rear (in addition to standard overmats)

### ENTERTAINMENT

- Naim for Bentley Premium Audio System – with enhanced surround-sound for the ultimate audio experience
- Six disc CD changer fitted in glove box
- TV tuner\*
- WiFi hotspot – 3G enabled\*
- WiFi hotspot – 4G enabled\*
- SIM card reader with maps and points of interest\*

### CONVENIENCE

- Adaptive cruise control\*
- Rear view camera\*
- Rear refrigerated bottle cooler – located behind the rear centre armrest
- Privacy telephone handset with two cradles and SIM card reader
- Two ashtrays and three cigar lighters
- Valet key
- Battery charger\*
- First aid kit and warning triangle
- Remote control garage / electronic gate opener
- GPS tracking system provision, in addition to standard alarm system\*
- GPS tracking system full fitment, in addition to standard alarm system\*

### PACKAGES

- Mulliner Driving Specification
- Convenience Specification
- Rear Passenger Specification
- Interior Style Specification with contrast stitching
- Interior Style Specification with hand cross-stitching

## Flying Spur W12 S

### STANDARD SPECIFICATION (IN ADDITION TO THE FLYING SPUR V8 STANDARD SPECIFICATION)

#### BRAKES

- Front vented disc brakes 405 x 36 mm (Bentley branded black painted brake callipers)
- Rear vented disc brakes 335 x 22 mm (black painted callipers)

#### WHEELS

- 21" Seven twin-spoke wheels - black painted finish

#### EXTERIOR

- 17 paint colour choices: Beluga, Camel, Dark Cashmere, Dark Sapphire, Glacier White, Granite, Hallmark, Havana, Marlin, Meteor, Midnight Emerald, Moonbeam, Onyx, Portofino, St. James' Red, Thunder, White Sand
- Gloss black Bentley matrix grille with black chrome surround and centre strip
- Gloss black lower bumper grille with sports bumper design
- Full exterior black chrome brightware
- Dark tint front and rear lights
- 'W12 S' rear pillar badges (no cost option)
- Unique Flying Spur W12 S treadplates to front and rear
- Beluga gloss rear diffuser
- Oval exhaust finisher

#### INTERIOR

- Full premium grade hide interior with a choice of 17 colours: Beluga, Imperial Blue, Linen, Porpoise, Newmarket Tan, Camel, Saddle, Burnt Oak, Damson, Magnolia, Shortbread, Hotspur, Portland, Brunel, Saffron, Cumbrian Green or Fireglow
- Black Tint Aluminium to fascia panels and door waistrails with Piano Black to console (unique to the Flying Spur W12 S). Full Piano Black, Burr Walnut or Dark Stained Burr Walnut are available as no cost option
- New and unique colour split 'W12 S' Choice of five colour splits: Four duo-tone and one mono-tone
- 4 + 1 seat system with adjustable rear outer seats and fixed centre section, four-way lumbar adjustment and seat heating to outer seats
- Sports Plus, single tone, three spoke hide trimmed steering wheel (unique to the Flying Spur W12 S)
- Steering column mounted gear selectors
- Twin front armrests
- Climate boost for rear seat passengers

- Electronically operated blinds to rear windows
- Rear touch screen remote (TSR)
- Comfort Specification: Front and rear seat ventilation and massage, front passenger seat movement controlled from rear compartment, front seat cushion extension adjustment
- Mulliner Driving Specification: Diamond-quilted seats and door panels, indented hide headlining, knurled sports gear lever, drilled alloy sports foot pedals, jewel fuel and oil filler caps, bright boot finisher

#### PACKAGES

- Mulliner Driving Specification
- Comfort Specification

#### OPTIONAL SPECIFICATION

#### EXTERIOR

- 89 additional exterior paint colours and the bespoke colour matching service
- Fine line hand painted to the side profile in 28 colours
- Electric glass tilt and slide sunroof (no cost option)
- Electric glass tilt and slide sunroof with solar cells to power additional cooling
- 21" Five-spoke Directional sports wheels in black finish
- 21" Five-spoke Directional sports wheels in dark tint finish
- 20" Space saver spare wheel and tyre in lieu of tyre inflation kit
- Beluga gloss door mirrors
- Standard brakes with red painted callipers (no cost option)
- Carbon ceramic brake with red painted callipers
- Carbon ceramic brakes with black painted brake callipers
- Bright chrome fittings to windows and doors

#### INTERIOR

- Choice of additional veneers: Burr Walnut (no cost option), Dark Fiddleback Eucalyptus (no cost option), Dark Stained Burr Walnut (no cost option), Dark Stained Madrona, Chestnut, Madrona, or Tamo Ash
- Full length centre console with closing tambour door
- Veneered centre console storage – one or two storage cases
- Veneered picnic tables to rear of front seats
- Veneered picnic tables with vanity mirrors to rear of front seats

- Sports Plus, duo-tone, three spoke, hide trimmed steering wheel
- Single tone, three spoke, hide trimmed steering wheel (no cost option)
- Duo-tone, three spoke, hide trimmed steering wheel
- Heated, single tone, three spoke, hide trimmed steering wheel
- Wood and hide, three spoke, hide trimmed steering wheel (not available in Dark Fiddleback Eucalyptus or Dark Stained Madrona)
- Sports, single tone, three spoke, hide trimmed steering wheel (no cost option)
- Sports, duo-tone, three spoke, hide trimmed steering wheel
- Mulliner champagne bottle/drinks cooler option
- Boot carpet matched to main or secondary hide
- Contrast binding to interior carpet overmats
- Contrast binding to boot carpets
- Contrast stitching to seats, headrests, door casings, fascia and centre consoles
- Stitching to wheel in a contrast colour
- Hand cross-stitching to the seats, headrests and door casings
- Embroidered Bentley 'wings' to the front and rear headrests (no cost option)
- Seat piping and single stitch to seats and headrests
- Chrome inlay to door waistrails

- Contemporary style cross banding to fascia, door waistrails and picnic tables if chosen (only available with Burr Walnut and Chesnut veneers)
- Bright tint aluminium to fascia and door waistrails
- Privacy glass to rear screen and rear side windows\*
- Deep pile carpet over mats front and rear (in lieu of standard mats)
- Lambswool rugs front and rear (in addition to standard mats)

#### ENTERTAINMENT

- Naim for Bentley Premium Audio System – with enhanced surround-sound for the ultimate audio experience
- Six disc CD changer fitted in glove box
- TV tuner\*
- WiFi hotspot – 3G enabled\*
- WiFi hotspot – 4G enabled\*
- SIM card reader with maps and points of interest\*

#### CONVENIENCE

- Adaptive cruise control\*
- Rear view camera\*
- Rear refrigerated bottle cooler – located behind the rear centre armrest
- Privacy telephone handset with two cradles and SIM card reader
- Privacy telephone handset with two cradles
- Two ashtrays and three cigar lighters
- Valet key
- Battery charger\*
- First aid kit and warning triangle
- Remote control garage / electronic gate opener
- GPS tracking system provision, in addition to standard alarm system\*
- GPS tracking system full fitment, in addition to standard alarm system\*

#### PACKAGES

- Convenience Specification
- Rear Passenger Specification
- Interior Style Specification with contrast stitching
- Interior Style Specification with hand cross-stitching

\*Regional applicability. Certain options and specifications may appear as standard or may not be available. Please contact your local retailer for more information.

SPECIFICATIONS



**FLYING SPUR V8**

Engine: 4.0 litre twin-turbocharged V8  
 Max power: 500 bhp / 373 kW / 507 PS @ 6,000 rpm  
 Max torque: 660 Nm / 487 lb ft @ 1,700 rpm  
 Transmission: 8-speed Quickshift automatic  
 Driveline: All-wheel drive  
 Wheelbase: 3066 mm / 120.7 inch  
 0-60 mph / 0-100 km/h: 4.9 / 5.2 seconds  
 Top speed: 183 mph / 295 km/h  
 Overall length: 5299 mm / 208.6 inch  
 Width (with mirrors folded): 1984 mm / 78.1 inch  
 Width (including mirrors): 2207 mm / 86.9 inch  
 Overall height: 1488 mm / 58.6 inch  
 Fuel tank: 90 litres / 20 gallons / 24 US gallons  
 Wheel size: 19" or optional 20" and 21"  
 Boot volume: 475 litres  
 Unladen weight: 2417 kg / 5329 lb  
 Gross weight: 2972 kg / 6552 lb

**Fuel consumption (EU cycle)**

Urban: 17.8 mpg / 15.9 l/100 km  
 Extra urban: 35.3 mpg / 8.0 l/100 km  
 Combined: 25.9 mpg / 10.9 l/100 km  
 CO<sub>2</sub> emissions: 254 g/km

**Fuel consumption (EPA cycle)**

City driving: 14 US mpg  
 Highway driving: 24 US mpg  
 Combined: 17 US mpg



**FLYING SPUR V8 S**

Engine: 4.0 litre twin-turbocharged V8  
 Max power: 521 bhp / 388 kW / 528 PS @ 6,000 rpm  
 Max torque: 680 Nm / 502 lb ft @ 1,700 rpm  
 Transmission: 8-speed Quickshift automatic  
 Driveline: All-wheel drive  
 Wheelbase: 3066 mm / 120.7 inch  
 0-60 mph / 0-100 km/h: 4.6 / 4.9 seconds  
 Top speed: 190 mph / 306 km/h  
 Overall length: 5299 mm / 208.6 inch  
 Width (with mirrors folded): 1984 mm / 78.1 inch  
 Width (including mirrors): 2207 mm / 86.9 inch  
 Overall height: 1488 mm / 58.6 inch  
 Fuel tank: 90 litres / 20 gallons / 24 US gallons  
 Wheel size: 20" or optional 21"  
 Boot volume: 475 litres  
 Unladen weight: 2417 kg / 5329 lb  
 Gross weight: 2972 kg / 6552 lb

**Fuel consumption (EU cycle)**

Urban: 17.8 mpg / 15.9 l/100 km  
 Extra urban: 35.3 mpg / 8.0 l/100 km  
 Combined: 25.9 mpg / 10.9 l/100 km  
 CO<sub>2</sub> emissions: 254 g/km

**Fuel consumption (EPA cycle)**

City driving: 14 US mpg  
 Highway driving: 24 US mpg  
 Combined: 17 US mpg

SPECIFICATIONS



**FLYING SPUR W12**

Engine: 6.0 litre twin-turbocharged W12  
 Max power: 616 bhp / 460 kW / 625 PS @ 6,000 rpm  
 Max torque: 800 Nm / 590 lb ft @ 2,000 rpm  
 Transmission: 8-speed Quickshift automatic  
 Driveline: All-wheel drive  
 Wheelbase: 3066 mm / 120.7 inch  
 0-60 mph / 0-100 km/h: 4.3 / 4.6 seconds  
 Top speed: 199 mph / 320 km/h  
 Overall length: 5299 mm / 208.6 inch  
 Width (with mirrors folded): 1984 mm / 78.1 inch  
 Width (including mirrors): 2207 mm / 86.9 inch  
 Overall height: 1488 mm / 58.6 inch  
 Fuel tank: 90 litres / 20 gallons / 24 US gallons  
 Wheel size: 20" or optional 19" and 21"  
 Boot volume: 475 litres  
 Unladen weight: 2475 kg / 5456 lb  
 Gross weight: 2972 kg / 6552 lb

**Fuel consumption (EU cycle)**

Urban: 12.7 mpg / 22.2 l/100 km  
 Extra urban: 27.7 mpg / 10.2 l/100 km  
 Combined: 19.2 mpg / 14.7 l/100 km  
 CO<sub>2</sub> emissions: 335 g/km

**Fuel consumption (EPA cycle)**

City driving: 12.0 US mpg  
 Highway driving: 20.0 US mpg  
 Combined: 15.0 US mpg



**FLYING SPUR W12 S**

Engine: 6.0 litre twin-turbocharged W12 S  
 Max Power: 626 bhp / 467 kW / 635 PS @ 6,000 rpm  
 Max Torque: 820 Nm / 605 lb.ft @ 2,000 rpm  
 Transmission: 8-speed Quickshift automatic  
 Driveline: All-wheel drive  
 Wheelbase: 3066 mm / 120.7 inch  
 0-60 mph / 0-100 km/h: 4.2 / 4.5 seconds  
 Top speed: 202 mph / 325 km/h  
 Overall length: 5299 mm / 208.6 inch  
 Width (with mirrors folded): 1984 mm / 78.1 inch  
 Width (including mirrors): 2207 mm / 86.9 inch  
 Overall height: 1488 mm / 58.6 inch  
 Fuel tank: 90 litres / 20 gallons / 24 US gallons  
 Wheel size: 21"  
 Boot volume: 475 litres  
 Unladen weight: 2475 kg / 5456 lb  
 Gross weight: 2972 kg / 6552 lb

**Fuel consumption (EU cycle)**

Urban: 12.7 mpg / 22.2 l/100 km  
 Extra urban: 27.7 mpg / 10.2 l/100 km  
 Combined: 19.2 mpg / 14.7 l/100 km  
 CO<sub>2</sub> emissions: 335 g/km

**Fuel consumption (EPA cycle)**

City driving: 12.0 US mpg  
 Highway driving: 20.0 US mpg  
 Combined: 15.0 US mpg





