

# CT6

PLUG-IN

| 2017



*Cadillac*

DARE GREATLY





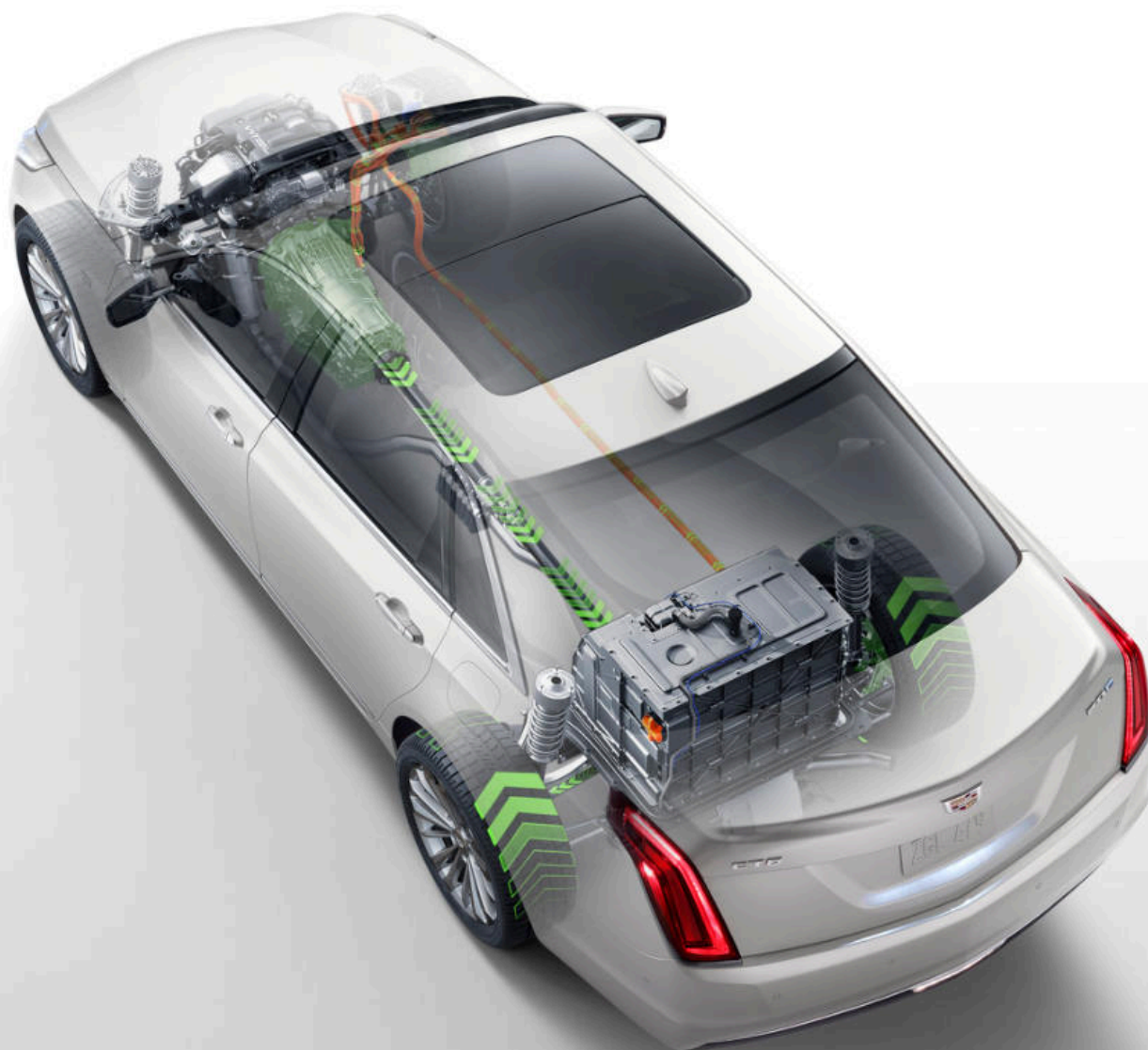
# PERFORMANCE THAT REDEFINES THE HYBRID

The dual-power system provides instant torque for increased power and spirited acceleration.

An all-new rear-wheel Electric Variable Transmission (EVT) is combined with exclusively designed motors to go from 0 to 60 in a Cadillac-estimated 5.2 seconds.

And enjoy the unexpected exhilaration of a 335 hp gas/electric hybrid!

1. Based on Cadillac testing.



# UNPARALLELED INNOVATION FOR UNBRIDLED EXHILARATION

Experience the efficiency of a hybrid sedan with the performance and acceleration comparable to our 3.0L V6 Twin Turbo.

The first-ever CT6 PLUG-IN delivers seamless power by automatically engaging the gas and electric propulsion systems depending on what you demand from your driving experience. This hybrid performance sedan is designed with optimum efficiency.



AVAILABLE SPRING 2017  
PRE-PRODUCTION MODEL SHOWN.

# A DRIVING FORCE IN INNOVATION. AND VICE VERSA.

## PERFORMANCE<sup>1</sup>

Propel from 0 to 60 in just 5.2 seconds<sup>1</sup> with 335 hp and 432 lb-ft of torque and enjoy a Cadillac-estimated 30 miles<sup>2</sup> of EV range. Exhilaration and efficiency are pushed to their limit with 150 mph of combined top speed on the race track and 78 mph of EV-only top speed.

<sup>1</sup> All specifications based on Cadillac testing. <sup>2</sup> Based on Cadillac testing. Official EPA estimates not yet available. Cadillac estimated 30-mile EV range based on 65 MPGe combined city/highway. Actual range varies with conditions.

## INNOVATION

The 18.4 kWh lithium-ion battery sits conveniently between the rear seat and the trunk. The battery can be charged using 120V or 240V charging systems, and Regen on Demand recaptures energy normally lost during braking and coasting.

The two-motor EVT, in conjunction with a 2.0L turbo 4-cylinder gasoline engine, provides smooth and seamless power through the entire driving range.

## LUXURY

Choose from three differently curated interior themes, featuring rich cut-and-sewn leathers, with exotic wood trims and Galvano chrome accents. Luxurious, innovative features also include a Rear Camera Mirror that streams HD video for substantially more sight than a traditional rear-view mirror. Plus, Rear Seat Infotainment provides entertainment and enjoyment to truly indulge.



## SELECT STANDARD EQUIPMENT

### DRIVETRAIN

**Engine** 2.0L I-4 Turbo with Direct Injection (DI), Continuous Variable Valve Timing (CVVT), 265 hp and 295 lb-ft of torque

**Propulsion Battery** Lithium-Ion (18.4 kWh)

**Hybrid Transmission** Electric variable transmission (EVT), RWD with 2 electric motors

### CHASSIS AND SUSPENSION

**Brakes** 4-wheel antilock, 4-wheel disc

**Driver-selectable modes** (Tour, Sport and Hold)

**Steering** Power-assist, electric-variable

**Suspension** High-Arm Multi-Link SLA Front Suspension; 5-Link Independent Rear Suspension

### EXTERIOR

**Door Handles** Body-color, illuminating

**Exhaust** Single with dual bright tips

**Fueling System** Capless, lock control, passenger side (Gasoline)

**EV Port** Driver side

**Glass** Acoustic, laminated, front doors

#### Lighting

Ambient lighting on instrument panel and doors

Front Cornering Lamps

LED Indirect Fire high beam/low beam

LED light pipe signature

Daytime running lamps

LED taillamps

**Mirrors** Outside heated power-adjustable, power-folding and driver-side auto-dimming, body-color with integrated turn signal indicators

**Spoiler** Rear decklid integrated with LED Center High-Mounted Stop Lamp (CHMSL)

**Wheels** 18" multi-spoke aluminum Ultrabright machined with Sterling Silver painted pockets

### INTERIOR

**Adaptive Remote Start** Activates heated/ventilated seats, climate control system and rear defroster

**Armrest** Center front and rear with hidden storage and dual cupholders

**Audio System** Bose® premium surround sound audio system, 10-speaker

**Automatic Braking** Front and rear

**Rear Seat Infotainment** Includes Rear Seat Infotainment with dual 10" diagonal HD screens, tilting with Blu-ray™ capability, dual display, remote control, auxiliary input jack and two wireless dual-channel headphones

**Bluetooth**<sup>®1</sup> For phone/audio, hands-free calling and data-service streaming with Natural Voice Recognition

**Cadillac CUE**<sup>®2</sup> (Cadillac User Experience)

Information and media control system with Embedded Navigation,<sup>3</sup> AM/FM stereo with 10.2"-diagonal color information display, three USB ports,<sup>4</sup> auxiliary audio port, Natural Voice Recognition, touchpad with handwriting recognition and Phone Integration with Apple CarPlay™<sup>5</sup> and Android™<sup>5</sup> Auto compatibility

**Climate Control** Dual-zone automatic

### Consoles

Center Front with integrated shifter, covered storage and two cupholders

Overhead Includes OnStar control and reading lamps; also includes Universal Home Remote

**Driver Assist Package** Includes Adaptive Cruise Control,<sup>6</sup> Collision Mitigation Braking

**Driver Awareness and Convenience Package** Includes Forward Collision Alert, Cadillac CUE<sup>2</sup> Information and Media Control System with Embedded Navigation,<sup>3</sup> Following Distance Indicator, Lane Keep Assist with Lane Departure Warning, Front Pedestrian Braking, Rear Cross Traffic Alert, Automatic Safety Belt Tightening, heated front seats, Side Blind Zone Alert,<sup>7</sup> Lane Change Alert, IntelliBeam headlamps, outside power-folding, driver-side auto-dimming mirrors, Rainsense Wipers and low-speed automatic braking

**Door Locks** Power programmable with lockout protection

#### Enhanced Night Vision

#### Electronic Parking Brake

**Gauge Cluster** 12" color, includes driver personalization, warning messages and vehicle information

**Glove Box** Electronic push-button opening

#### HD Radio

**Head-Up Display** Full-color, configurable

**Keyless Access** EZ key full Keyless Access offers keyless entry to all doors and trunk

**Keyless Ignition** With Push-Button Start

**Lighting** LED lighting for glove box, front cupholders, overhead console, front and rear door handles, front and rear passenger footwell, map pockets, rear assist handles and cargo area

**Memory Package** Two presets for driver's seat position and outside mirrors, and vehicle exit preset function

**OnStar® Basic Plan**<sup>8</sup> For 5 years, including select features of the myCadillac mobile app,<sup>9</sup> Advanced Diagnostics<sup>10</sup> and Dealer Maintenance Notification

#### Pedestrian-Friendly Alert

#### Power Outlets

110V Auxiliary, located below center rear-seat cushion

Rear auxiliary, dual USB ports

Dual USB ports<sup>4</sup> in front console

Cargo Area auxiliary

**Rear Camera Mirror** Inside rear-view auto-dimming with streaming video

#### Rear Vision Camera

**Regen On Demand Paddle Shifters** On steering wheel

#### Seating

5-passenger

Front bucket, heated and ventilated driver and front passenger, 16-way adjustable, includes 4-way power pneumatic lumbar and 4-way manual adjustable head restraints

Heated rear outboard seating positions, fixed seatback includes fold-down center armrest, integrated storage and dual cupholders

Leather seating surfaces

#### Sill Plates

Illuminating

**SiriusXM Satellite Radio**<sup>11</sup> With three-month trial

**Steering Column** Power tilt and telescoping

**Steering Wheel** Leather-wrapped rim, with Audio, Driver Information Center (DIC) and cruise controls

**Sunshade** power, rear window, manual, rear sides

#### UltraView Sunroof

**Universal Home Remote** 3-channel

**Windows** Power, with front and rear express -up/-down; includes rear passenger lockout

**Wireless Charging**<sup>12</sup> Inductive charging system for portable devices

### SAFETY AND SECURITY

**Air Bags**<sup>13</sup> Driver and front-passenger frontal, front-seat thorax and pelvic, rear thorax for outboard seating positions, side-curtain and driver and front-passenger knee; Passenger Sensing System

**Automatic Park Assist** Includes front and rear park assist and parallel and perpendicular parking

#### Automatic Vehicle Hold Braking

**Electronic Stability Control System** StabiliTrak<sup>®</sup>

**LATCH System** (Lower Anchors and Top tethers for CHildren) for child safety seats

**OnStar Guidance Plan**<sup>14</sup> For one year, including Automatic Crash Response, Stolen Vehicle Assistance, Roadside Assistance, Turn-by-Turn Navigation and more (trial excludes Hands-Free Calling minutes)

**OnStar 4G LTE and available built-in Wi-Fi<sup>®</sup> hotspot**<sup>15</sup> to connect to the internet; includes data trial for three months or three gigabyte (whichever comes first)

**Sensor** Vehicle inclination, and vehicle interior movement

**Surround Vision** Bird's-eye view of vehicle

#### Surround Vision Recorder

**Theft-Deterrent System** Vehicle immobilizer

**Traction Control** All-speed with brake and engine intervention

### SELECT DIMENSIONS

All measurements in inches

#### EXTERIOR

Wheelbase	122.4
Overall Length	204.1
Overall Width	74.0
Overall Height	58.0
Front Track Width	63.4
Rear Track Width	64.0

#### INTERIOR

	FRONT	REAR
Leg Room	46.4	40.4
Head Room	40.2	38.0
Hip Room	55.9	53.5
Shoulder Room	58.3	56.2

### SELECT CT6 CAPACITIES

Fuel (gal., approx.)	15.6
Cargo Volume (cu ft) <sup>16</sup>	10.6
Seating Capacity	2/3

## EXTERIOR COMBINATIONS

CRYSTAL WHITE TRICOAT<sup>17</sup>



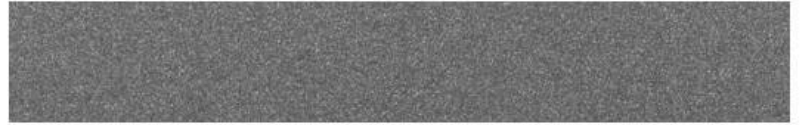
BRONZE DUNE METALLIC



DEEP AMETHYST METALLIC



MOONSTONE METALLIC



STELLAR BLACK METALLIC



## INTERIOR COMBINATIONS

### JET BLACK

LEATHER SEATING SURFACES WITH CHEVRON PERFORATED INSERTS



JET BLACK ACCENTS



MINERAL POLAR BURL AND BRONZE CARBON FIBER



### CINNAMON

LEATHER SEATING SURFACES WITH CHEVRON PERFORATED INSERTS



JET BLACK ACCENTS



TWILL WEAVE CARBON FIBER AND RAVENWOOD TRIM



### LIGHT PLATINUM

LEATHER SEATING SURFACES WITH CHEVRON PERFORATED INSERTS



JET BLACK ACCENTS



MINERAL POLAR BURL AND BRONZE CARBON FIBER



## WHEELS

18" MULTI-SPOKE ALUMINUM ULTRABRIGHT MACHINED WITH STERLING SILVER PAINTED POCKETS



**1.** Go to [my.cadillac.com/learn](http://my.cadillac.com/learn) to find out which phones are compatible with the vehicle. **2.** Cadillac CUE functionality varies by model. Full functionality requires compatible Bluetooth and smartphone. Some devices require USB connectivity. **3.** Map coverage available in the United States, U.S. Virgin Islands, Puerto Rico and Canada. **4.** Not compatible with all devices. **5.** Vehicle user interfaces are products of Apple and Google and their terms and privacy statements apply. Requires compatible smartphone and data plan rates apply. **6.** Adaptive Cruise Control is no substitute for the driver's personal responsibility to operate the vehicle in a safe manner. The driver needs to remain attentive to traffic and road conditions and provide the steering, braking or other inputs necessary to retain control of the vehicle. **7.** Before making a lane change, always check the Side Blind Zone Alert display and the side and inside rear mirrors, look over your shoulder for vehicles and hazards, and activate the turn signal. **8.** Does not include emergency or security services. Visit [onstar.com](http://onstar.com) for coverage map, details and system limitations. **9.** Requires data plan, compatible vehicle and compatible device. Some features require factory-installed remote-start, power locks, Tire Pressure Monitoring System or active OnStar service. **10.** Capabilities vary by model. Visit [onstar.com](http://onstar.com) for details and system limitations. Message and data rates may apply. Requires active OnStar service, email address and enrollment in Advanced Diagnostics. **11.** If you subscribe after your trial period, subscriptions are continuous until you call SiriusXM to cancel. See SiriusXM Customer Agreement for complete terms at [www.siriusxm.com](http://www.siriusxm.com). Other fees and taxes will apply. All fees and programming subject to change. For more information about NavTraffic, visit [siriusxm.com/navtraffic](http://siriusxm.com/navtraffic). For more information about Travel Link, visit [siriusxm.com/travellink](http://siriusxm.com/travellink). XM satellite service is available only to those in the 48 contiguous U.S.A. and D.C. Sirius, XM and all related marks and logos are trademarks of Sirius XM Radio Inc. **12.** The system wirelessly charges one PMA- or Qi-compatible mobile device. To check for phone or other device compatibility, see [my.cadillac.com/learn](http://my.cadillac.com/learn). **13.** Always use safety belts and child restraints. Children are safer when properly secured in a rear seat in the appropriate child restraint. See the Owner's Manual for more information. **14.** Visit [onstar.com](http://onstar.com) for coverage map, details and system limitations. OnStar acts as a link to existing emergency service providers. **15.** Requires a compatible mobile device, active OnStar service and data plan. 4G LTE service available in select markets. Visit [onstar.com](http://onstar.com) for coverage map, details and system limitations. **16.** Load capacity limited by weight and distribution. **17.** Available at additional cost. ©2017 General Motors. All rights reserved. GM, the GM emblem, Cadillac, the Cadillac Crest, OnStar, the OnStar emblem and the slogans, emblems, vehicle model names, vehicle body designs and other marks appearing in this catalog are the trademarks and/or service marks of General Motors, its subsidiaries, affiliates or licensors.

