

THE 2020  
**CT6**

---

A CLOSER **LOOK**



*Cadillac*



# POWER. PLAY.

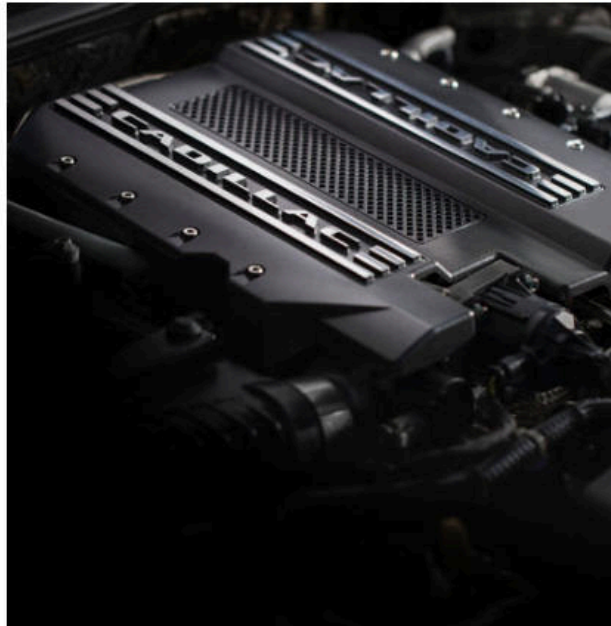
Two potent and provocative engines to choose from. No matter which engine you select, enjoy a smooth, responsive drive with Driver Selectable Modes. Choose from Tour, Sport, Snow/Ice and on CT6-V— Track.<sup>1</sup> Each mode provides a unique driving experience, making commutes comfortable and turns tight.



CT6-V model shown. <sup>1</sup>Track mode is exclusive to CT6-V.

## ENGINE OPTIONS

The CT6 is dedicated to performance. Choose from powerful and efficient engine options, the 4.2L Blackwing<sup>1</sup> Twin Turbo V8 and 3.6L V6, each paired with a 10-speed automatic transmission. Giddyup.



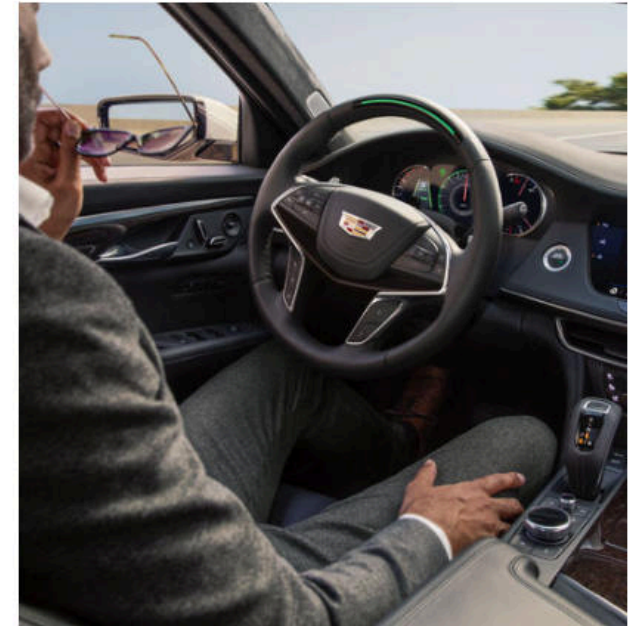
## ACTIVE CHASSIS SYSTEM

With the available Active Chassis Package, every wheel drives, steers and, with Magnetic Ride Control, adjusts vertical suspension damping within milliseconds, offering you exceptional maneuverability.



## SUPER CRUISE

Available Super Cruise<sup>2</sup> is the world's first true hands-free driver-assistance feature for compatible highways. The Super Cruise features make long drives, or even your daily commute, a little easier. Welcome to the future.



<sup>1</sup>Extremely limited availability. Available early 2020. <sup>2</sup>Even while using the Super Cruise driver assistance feature, always pay attention while driving and do not use a hand-held device. Visit [cadillacsupercruise.com](http://cadillacsupercruise.com) for compatible highways and more information. Requires active OnStar plan, active WiFi Hotspot, working electrical system, cell reception and GPS signal.

# CONDUCT A MOMENT. AT YOUR TEMPO.

Discover an interior teeming with modern comforts, curated aesthetics and savvy controls that result in the epitome of service. From its elegant materials and careful assembly to its many amenities and supreme comforts, the space evokes a new level of craftsmanship.



## HANDCRAFTED MATERIALS

From the real wood veneers to the carbon fiber trim, every detail of the interior has been expertly obsessed over.



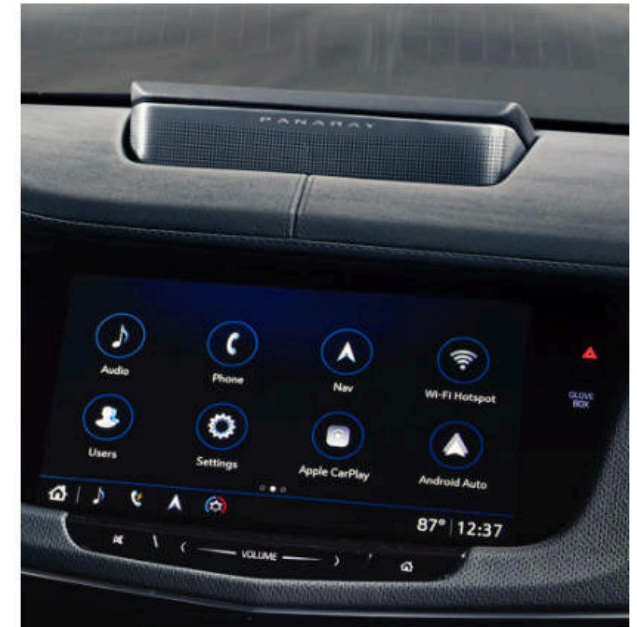
## INDULGENT SEATING

Platinum models serve additional comforts with both outboard heated and ventilated front and rear seats and 15 unique massage settings up front. Even the rear seats finish first. With generous leg room, passengers have ample space to relax for hours on end.



## BOSE PANARAY

The available 34-speaker Bose Panaray sound system turns the CT6 into a moving symphony. The available Bose Panaray sound system utilizes innovative technologies to create an immersive sound experience formed from the union of vehicle and audio design.



# DESIGN YOU'RE DRIVEN TO

From its bold-faced grille to its sleek, long and low proportions, the look is hard to resist and impossible to mistake. Aluminum body panels and signature lights; lines, curves and sweeping planes. Every element comes together seamlessly to create an understated yet riveting exterior.



## STRIKING EXTERIOR

---

With carved lines and sporty styling complemented by the CT6's powerful stance, you won't want to look away.



## LIGHTWEIGHT ARCHITECTURE

---

The lightweight CT6 architecture is at the core of its agile handling. With 12 new patents and an aluminum structure that weighs 220 lbs less than steel, the CT6 has innovative bones.



## SIGNATURE LAMPS

---

With bi-LED high/low beam projectors to help increase visibility, the signature headlamps and taillamps are unmistakably Cadillac.



# ATHLETIC AND INTELLIGENT

The CT6 is designed with seamless technology that connects you to your world. Features such as the Cadillac user experience<sup>1</sup> provide a suite of information and entertainment offerings at your command.



<sup>1</sup>Functionality varies by model. Full functionality requires compatible Bluetooth and smartphone, and USB connectivity for some devices.

## INTUITIVE CONTROLS

With a tactile rotary controller and an intuitive instrument panel, the world is in the palm of your hand. High-five to that.



<sup>1</sup>Safety or driver assistance features are no substitute for the driver's responsibility to operate the vehicle in a safe manner. The driver should remain attentive to traffic, surroundings and road conditions at all times. Visibility, weather and road conditions may affect feature performance. Read the vehicle Owner's Manual for more important feature limitations and information. <sup>2</sup>Not available on Luxury trim.

## REAR CAMERA MIRROR

The available Rear Camera Mirror<sup>1,2</sup> allows you to use either a traditional inside rearview mirror or a camera display in the mirror that provides a wider, less obstructed view to check for traffic.



## REAR SEAT INFOTAINMENT

The available Rear Seat Infotainment system features articulating 10" diagonal screens and connectivity for your personal devices, including streaming available Wi-Fi<sup>3</sup> for your phone, tablet or laptop, as well as HDMI and USB<sup>4</sup> ports.

<sup>3</sup>Service varies with conditions and location. Requires active service plan and paid AT&T data plan. See onstar.com for details and limitations.



<sup>4</sup>Functionality varies by model. Full functionality requires compatible Bluetooth and smartphone, and USB connectivity for some devices.

# SURROUNDED BY AVAILABLE SAFETY AND DRIVER- ASSISTANCE TECHNOLOGY

The CT6 offers an array of radar, camera and ultrasonic sensors designed to help detect potential hazards. These available features can help you avoid collisions, so you can enjoy the pleasure of driving with more confidence.





## SELECT STANDARD FEATURES

---

- AUTOMATIC EMERGENCY BRAKING
- FRONT PEDESTRIAN BRAKING
- FORWARD COLLISION ALERT
- LANE CHANGE ALERT WITH SIDE BLIND ZONE ALERT
- REAR CROSS TRAFFIC ALERT
- FOLLOWING DISTANCE INDICATOR
- TEEN DRIVER
- ONSTAR & CADILLAC CONNECTED SERVICES CAPABLE
- SAFETY ALERT SEAT
- AUTOMATIC SEAT BELT TIGHTENING
- 8 AIRBAGS WITH FRONT PASSENGER SENSING<sup>1</sup>

<sup>1</sup>Always use seat belts and the correct child restraint for your child's age and size, even with airbags. Even in vehicles equipped with the Passenger Sensing System, children are safer when properly secured in a rear seat in the appropriate infant, child or booster seat. Never place a rear-facing infant restraint in the front seat of any vehicle equipped with an active frontal airbag. See your vehicle Owner's Manual and child safety seat instructions for more safety information.

Safety or driver assistance features are no substitute for the driver's responsibility to operate the vehicle in a safe manner. The driver should remain attentive to traffic, surroundings and road conditions at all times. Visibility, weather, and road conditions may affect feature performance. Read the vehicle's Owner's Manual for more important feature limitations and information.



## AVAILABLE FEATURES

---

- SUPER CRUISE<sup>1</sup> DRIVER-ASSISTANCE FEATURE
- ENHANCED AUTOMATIC EMERGENCY BRAKING
- REAR PEDESTRIAN ALERT
- NIGHT VISION
- AUTOMATIC PARKING ASSIST WITH BRAKING
- REVERSE AUTOMATIC BRAKING
- ADAPTIVE CRUISE CONTROL-ADVANCED
- REAR CAMERA MIRROR
- HD SURROUND VISION
- SURROUND VISION RECORDER
- FULL-COLOR RECONFIGURABLE HEAD-UP DISPLAY
- THEFT-DETERRENT ALARM SYSTEM
- BODY SECURITY CONTENT THEFT-DETERRENT SYSTEM
- VEHICLE INCLINATION SENSOR
- VEHICLE INTERIOR MOVEMENT SENSOR

<sup>1</sup>Even while using the Super Cruise driver assistance feature, always pay attention while driving and do not use a hand-held device. Visit [cadillacsupercruise.com](http://cadillacsupercruise.com) for compatible highways and more information. Requires active OnStar plan, active WiFi Hotspot, working electrical system, cell reception and GPS signal.

Safety or driver assistance features are no substitute for the driver's responsibility to operate the vehicle in a safe manner. The driver should remain attentive to traffic, surroundings and road conditions at all times. Visibility, weather, and road conditions may affect feature performance. Read the vehicle's *Owner's Manual* for more important feature limitations and information.

# SPECS

---

- **3.6L V6 ENGINE**  
335 HP | 284 LB-FT TORQUE | STANDARD ON LUXURY AND PREMIUM LUXURY
- **4.2L BLACKWING™<sup>1</sup> V8 TWIN TURBO ENGINE**  
500 HP | 574 LB-FT OF TORQUE | STANDARD ON CT6 PLATINUM
- **4.2L BLACKWING™<sup>1</sup> V8 TWIN TURBO ENGINE**  
550 HP | 640 LB-FT OF TORQUE | STANDARD ON CT6-V
- **CARGO VOLUME<sup>2</sup>**  
15.8 CU. FT.
- **FUEL CAPACITY**  
19.2 GALLONS, APPROXIMATE, U.S.

<sup>1</sup>Extremely limited availability. Available Early 2020.

<sup>2</sup>Cargo and load capacity limited by weight and distribution.



205.8"

58"

# TRIMS

---

## LUXURY

Luxury features:



- 3.6L V6 engine with All-Wheel-Drive (AWD) system and 10-speed automatic transmission
- Cadillac User Experience<sup>1</sup> with Rotary Infotainment Controller
- Automatic Emergency Braking<sup>2</sup>
- Lane Change Alert with Side Blind Zone Alert<sup>2</sup>
- UltraView<sup>®</sup> power sunroof

<sup>1</sup>Functionality varies by model. Full functionality requires compatible Bluetooth and smartphone, and USB connectivity for some devices

<sup>2</sup>Read the vehicle's Owner's Manual for important feature limitations and information

<sup>3</sup>Even while using the Super Cruise driver assistance feature, always pay attention while driving and do not use a hand-held device.

Visit [cadillacsupercruise.com](http://cadillacsupercruise.com) for compatible highways and more information. Requires active OnStar plan, active WiFi Hotspot, working electrical system, cell reception and GPS signal.

## PREMIUM LUXURY

Includes Luxury features, plus:



- Super Cruise<sup>3</sup> Driver-Assistance feature
- Automatic Parking Assist<sup>2</sup> with braking
- Night Vision<sup>2</sup>
- Magnetic Ride Control<sup>2</sup>
- Bose Panaray 34-speaker audio system

# TRIMS

---

## PLATINUM

Includes Premium Luxury features, plus:



- 4.2L Twin Turbo V8 Blackwing<sup>1</sup> engine  
500 hp and 574 lb-ft of torque
- Super Cruise<sup>2</sup> Driver-Assistance feature
- 20-way adjustable heated, ventilated  
and massaging front seats
- Rear seat infotainment
- 20" Platinum Twin 5-Spoke alloy with Manoojian  
finish and chrome inserts

<sup>1</sup>Extremely limited availability. Available Early 2020.

<sup>2</sup>Even while using the Super Cruise driver assistance feature, always pay attention while driving and do not use a hand-held device. Visit [cadillacsupercruise.com](http://cadillacsupercruise.com) for compatible highways and more information. Requires active OnStar plan, active WiFi Hotspot, working electrical system, cell reception and GPS signal.

<sup>3</sup>Read the vehicle's Owner's Manual for important feature limitations and information.

## CT6-V

CT6-V features:



- 4.2L Twin Turbo V8 Blackwing<sup>1</sup> engine  
550 hp and 640 lb-ft of torque
- 10-speed automatic transmission
- High-performance Brembo front brakes
- Magnetic Ride Control<sup>3</sup>
- Mechanical limited slip differential
- Driver Selectable Modes (Tour, Sport, Snow/Ice and Track)

# EXTERIOR COLORS

---



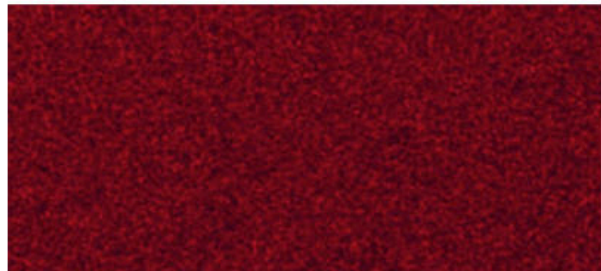
BLACK RAVEN



RADIANT SILVER METALLIC<sup>1</sup>



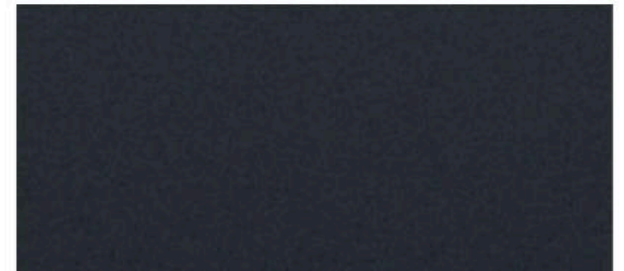
CRYSTAL WHITE TRICOAT<sup>2</sup>



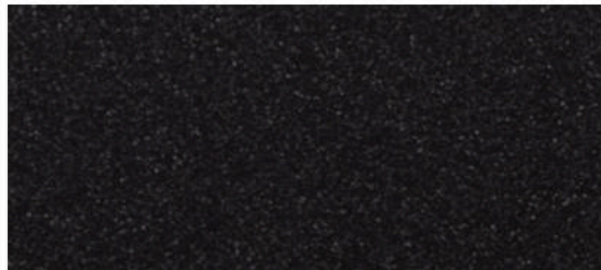
RED HORIZON TINTCOAT<sup>2</sup>



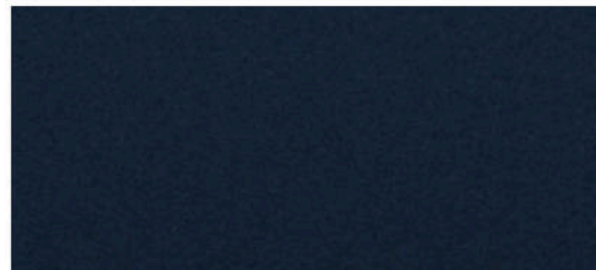
SATIN STEEL METALLIC<sup>2</sup>



MANHATTAN NOIR METALLIC<sup>3</sup>



STELLAR BLACK METALLIC<sup>1,3</sup>



SHADOW METALLIC<sup>1,3</sup>

<sup>1</sup>Not available on CT6-V.

<sup>2</sup>Available at extra charge.

<sup>3</sup>Available at extra charge. No additional charge on Platinum.

# INTERIOR COLORS

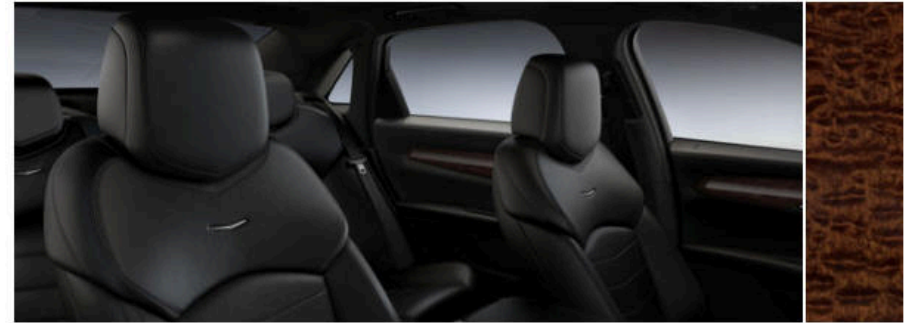
---



**SAHARA BEIGE / JET BLACK ACCENTS**

Leather Seating Surfaces

Available on Luxury. Not available on CT6-V.



**JET BLACK**

Leather Seating Surfaces

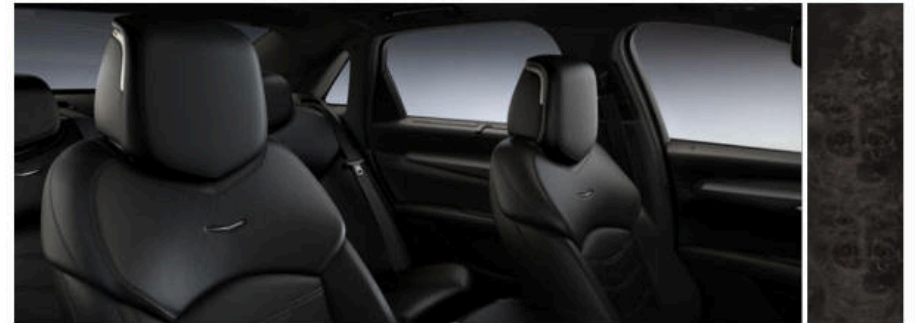
Available on Luxury.



**DARK AUBURN / JET BLACK ACCENTS**

Leather Seating Surfaces with Chevron perforated inserts

Available on Premium Luxury.



**JET BLACK**

Leather Seating Surfaces with Chevron Perforated inserts

Available on Premium Luxury. Not available on CT6-V.

# INTERIOR COLORS-CONTINUED

---



## VERY LIGHT CASHMERE / MAPLE SUGAR ACCENTS

Semi-Aniline Leather Seats with Chevron perforated inserts

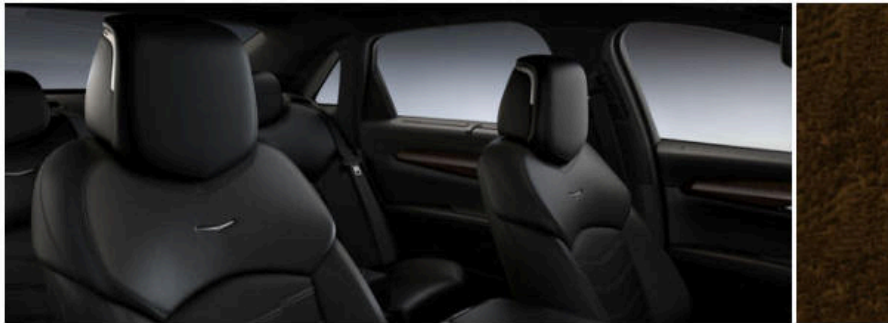
Available on Platinum. Not available on CT6-V.



## SAHARA BEIGE / JET BLACK ACCENTS

Leather Seating Surfaces with Chevron perforated inserts

Available on Premium Luxury. Not available on CT6-V.



## JET BLACK

Semi-Aniline Leather Seats with Chevron perforated inserts

Available on Platinum. Not available on CT6-V.

# WHEELS



19" Multi-Spoke alloy wheels with Sterling Silver finish

Standard on Luxury.



20" Split Spoke alloy wheels with Ultra Bright with Manoogian finish

Standard on Premium Luxury.



20" Platinum Twin 5-Spoke alloy wheels with Manoogian finish and chrome inserts

Standard on Platinum.



20" Split 10-Spoke alloy wheels with Polished finish<sup>1</sup>

Available on Luxury, Premium Luxury and Platinum. Dealer-installed accessory.



20" Midnight Silver alloy wheels<sup>1</sup>

Available on Luxury, Premium Luxury and Platinum. Dealer-installed accessory.



20" V-Series Split 5-Spoke alloy wheels with Ultra Bright with Midnight Silver finish

Standard on V-Series.

<sup>1</sup>Use only GM-approved tire and wheel combinations. See <https://accessories.cadillac.com/> for important wheel and tire information, or see your dealer.