



2016

CTS

DESIGNED
WITH ONE
RELENTLESS
FOCUS.
THE DRIVER.



Cadillac





COMMAND
THE ROAD AHEAD

From its remarkably powerful engines, to its driver-oriented cockpit, to a sleek aero-designed exterior, no detail has been overlooked. The result is a powerfully crafted sedan that embodies the driver.



PART I
THE FEELING





WIELD RELENTLESS POWER



MAGNIFY THE DRIVING
EXPERIENCE



CONTROL INGENUITY AT EVERY TURN



TAKE A POWERFUL STANCE



CHASE WHAT MATTERS.
THE 2016 CTS.





PART II
THE FEATURES

PERFORMANCE

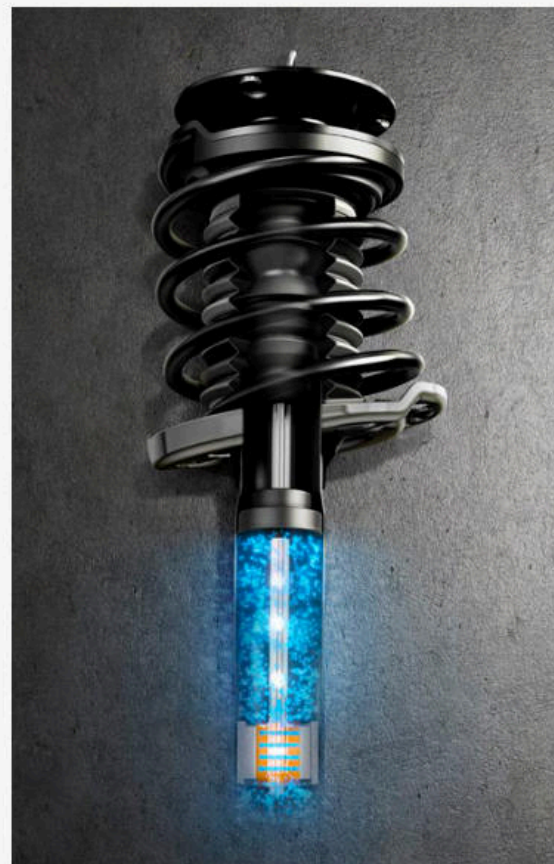
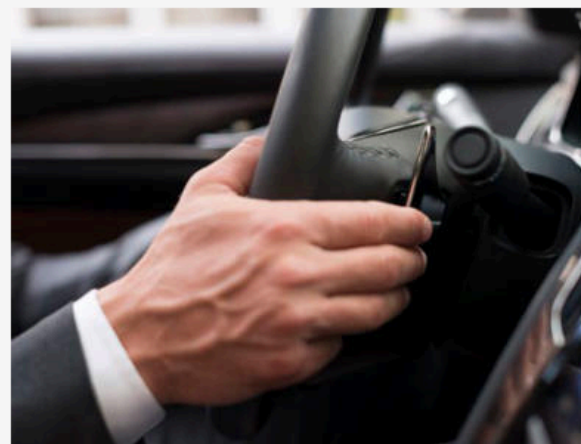
Road-ready. Track-tested. In 2014, the CTS was tested on Germany's famed Nürburgring. In 2016, the result is a heightened driver-focused and obsessively detailed sedan. Its powerful engines with better efficiency, responsive handling and impressive acceleration offer an exhilarating, smooth and tight drive.

3.6L V6 OR 2.0L TURBO ENGINES 8-SPEED AUTOMATIC TRANSMISSION

Power players. The available 3.6L V6 engine offers assured acceleration and 335 hp, along with Active Fuel Management for everyday efficiencies. The standard, potent 2.0L Turbo 4-cylinder engine delivers 268 hp and up to an EPA-estimated 31 highway mpg. Both are available with Auto Stop/Start technology.

Each engine is paired with a technically advanced 8-speed automatic transmission for quick shifting, immediate responsiveness and more efficiency.





MAGNESIUM PADDLE SHIFTERS AND DRIVER-SELECTABLE MODES

Control total performance. Manually move through the gears of an 8-speed automatic transmission with paddle shifters that place control firmly in your hands. Plus, with your choice of driver-selectable modes (Tour, Sport, Snow/Ice, and with V-Sport models, Track), you can easily adjust the steering, suspension and transmission calibrations depending on your preference and road conditions.

MAGNETIC RIDE CONTROL

Adjust to every inch of the road. Available Magnetic Ride Control reads and reacts to the road up to 1,000 times per second, maintaining precise body control and chassis composure for a smooth, seamless ride.

ACTIVE FUEL MANAGEMENT

Efficient power. With the 3.6L V6 engine, Active Fuel Management activates all cylinders whenever you demand power and imperceptibly deactivates 2 cylinders when you don't.

ALL-WHEEL DRIVE WITH ACTIVE TORQUE TECHNOLOGY

Sure footing in inclement weather. Available all-wheel drive maximizes stability and handling, delivering impeccable control in less-than-perfect driving conditions.

BREMBO® PERFORMANCE BRAKES

Remarkable stopping power. The CTS features Brembo fixed-caliper, aluminum 4-piston front brakes that deliver responsive stopping and consistent pedal feel.

NEAR-PERFECT 50/50 WEIGHT BALANCE

A long, light and strong frame. This RWD car is among the lightest in its class, the streamlined architecture makes for enhanced handling, quiet and driving dynamics. By using aluminum in the front shock towers and front suspension, Cadillac engineers achieved near-perfect front-to-rear weight distribution. Likewise, the aluminum alloy door structures save weight compared with traditional steel.

V-SPORT

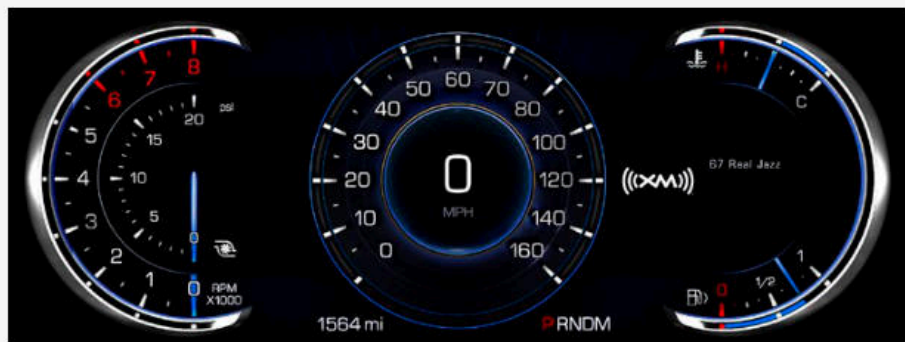
Even more adrenaline. The CTS V-Sport propels you with a Twin Turbo V6 engine and delivers 420 hp with 430 lb-ft of torque, bringing you from 0 to 60 in a staggering 4.4 seconds. And with standard Magnetic Ride Control, electronic Limited Slip Differential (eLSD), high-performance front Brembo® brakes and road-gripping Pirelli® summer-only run-flat tires,¹ you're firmly in control.

V-SPORT PREMIUM

Unleash the enhancements. The CTS V-Sport Premium Collection features 20-way performance front seats, Tri-Zone Climate Control, heated outboard rear seats, a new HD reconfigurable gauge cluster with three layouts, including a V-Sport performance layout, full-color Head-Up Display (HUD), an UltraView Sunroof, Driver Assist Package and strikingly unique V-Sport 18" Ultrabright wheels.

¹ Do not use summer tires in winter conditions, as it would adversely affect vehicle safety, performance and durability. Use only GM-approved tire and wheel combinations. Unapproved combinations may change the vehicle's performance characteristics. For important tire and wheel information, go to cadillacaccessories.com or see your dealer. Lower profile tires wear faster. Wheel and tire damage may occur on rough or damaged roads or from surfaces or from curbs, debris or obstacles. This damage is not covered by the GM New Vehicle Limited Warranty.





ELECTRONIC LIMITED-SLIP DIFFERENTIAL

Grip the road. Its electronic Limited-Slip Differential (eLSD) automatically redirects power to the drive wheels with the best traction for better corner exit acceleration, while enhancing performance split between the rear wheels, making driving well-balanced mid-corner and maximizing corner exit acceleration in most road conditions.

V-SPORT GAUGE CLUSTER

Prioritize performance. Customize your cluster with the V-Sport Premium and place a greater emphasis on your tachometer or mph. Or choose from two other reconfigurable themes for a tailored driving experience.

HEAD-UP DISPLAY

Performance at a glance. Available Head-Up Display (HUD) projects vehicle data, such as speed, audio, navigation and performance onto the windshield, so you can stay updated while keeping your eyes on the road. Standard on V-Sport Premium Collection.

INTERIOR

An interior that revolves around you. Tailor the CTS with your choice of interior environments. Select from available materials like cut-and-sewn interiors, full Semi-Aniline leather seating, exotic woods and carbon fiber, all skillfully fitted using expert craftsmanship.

20-WAY PERFORMANCE FRONT SEATS

Customizable comfort. Available full Semi-Aniline leather, 20-way performance front seats with power-adjustable seatback bolsters and manual thigh support provide total comfort for the driver and front passenger.





TRI-ZONE CLIMATE CONTROL

Custom comfort in every seat. Available Tri-Zone Climate Control allows the driver, front passenger and rear passengers to independently control their temperature settings. Rear passengers can also warm up with outboard heated seats.



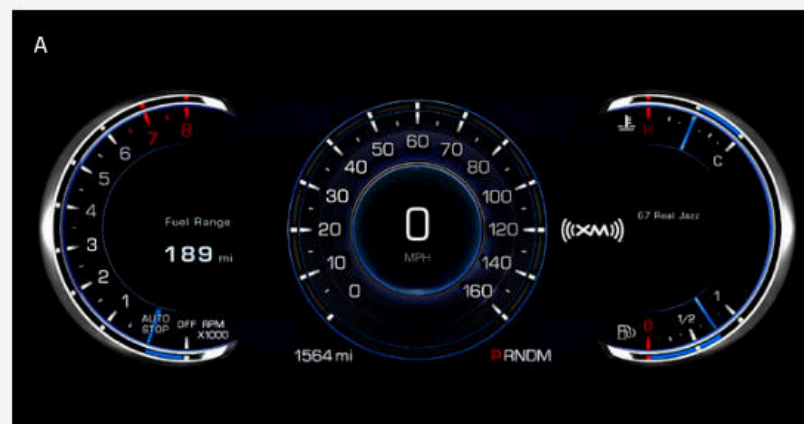
ADAPTIVE REMOTE START

Enjoy a head start. Adaptive Remote Start allows the engine to be started from up to 100 yards away. The system can also detect the outside temperature and activate the available heated and ventilated seats accordingly.



AMBIENT INTERIOR LIGHTING

Bring the finer things to light. Available ambient lighting subtly highlights the dash and door trim, showcasing the meticulous craftsmanship within.



CUSTOMIZABLE 12.3" LCD DISPLAY

Your information, displayed your way. With either the Balanced (A) or Enhanced (B) themes, customize the display on the available 12.3" LCD screen. Easily view vital information, as well as content like navigation and entertainment in a full-color, HD cluster.



REAR VISION CAMERA

See what lies behind. Rear Vision Camera automatically displays a live image of the area behind you on the Cadillac CUE® screen. Guiding lines on the image plot out your intended trajectory, helping you to see people and objects that might be in your path.

SURROUND VISION

A brand new perspective. Available Surround Vision provides a bird's-eye view of the area immediately surrounding the vehicle when in low-speed Drive or Reverse. This view, projected on the Cadillac CUE screen, helps increase your awareness when parking or in reverse.

TECHNOLOGY

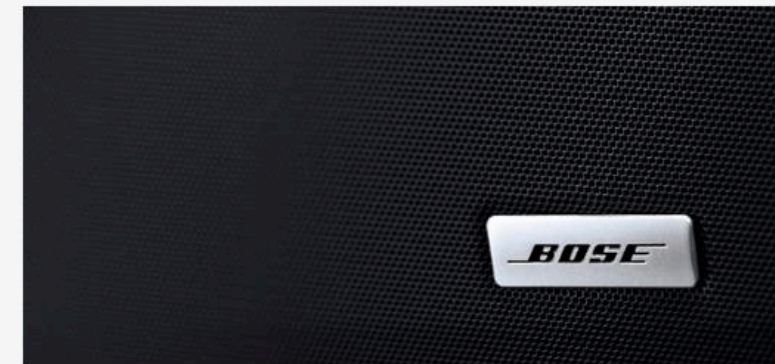
Technology uninterrupted. Customizable features make every ride feel tailor-made to your preferences. From the standard Phone Integration technology to Wireless Charging,¹ the CTS is equipped with progressive technology that offers enhanced enjoyment and convenience.

CADILLAC CUE[®]

Real-time updates at your fingertips. Simply touch the Cadillac CUE² screen and access a suite of information and entertainment offerings such as Pandora^{®3} Radio, available enhanced 3-D GPS Navigation⁴ and new for 2016, Phone Integration compatibility with Apple[®] CarPlay.^{™5} Plus later in the model year, Android[™] Auto.⁵

1. The system wirelessly charges one PMA- or Qi-compatible mobile device. To check for phone or other device compatibility, see my.cadillac.com. 2. Cadillac CUE functionality varies by model. Full functionality requires compatible Bluetooth[®] and smartphone. Some devices require USB connectivity. 3. Data plan rates apply. 4. Map coverage available in the United States, U.S. Virgin Islands, Puerto Rico and Canada. 5. Vehicle user interfaces are products of Apple and Google and their terms and privacy statements apply. Requires compatible smartphone and data plan rates apply.





PHONE INTEGRATION

Powerfully connected. With Phone Integration compatibility for Apple CarPlay¹ and later in the model year, Android Auto²; you can access your contacts, music, information and more with just the touch of the Cadillac CUE² screen. Plus with voice-activated technology, every feature is easily accessible, so you can keep your attention on the road ahead.

ONSTAR WITH 4G LTE AND BUILT-IN WI-FI³ HOTSPOT³

Never miss an update. Available OnStar with 4G LTE is equipped with a built-in Wi-Fi hotspot that can host up to seven mobile devices, both inside the CTS and up to 50 feet away.

WIRELESS CHARGING⁴

Cut the cord. With Wireless Charging, you can power your compatible devices anytime the vehicle is running.

BOSE[®] TECHNOLOGY

Sumptuous sound. The premium 11-speaker Bose sound system plays your favorite music with crystal clarity. For a more immersive experience, the available 13-speaker Bose Surround Sound system features Centerpoint[®] 2 surround technology, delivering concert-like sound from nearly any stereo source.

HEAD-UP DISPLAY

Stay focused and informed. The available Head-Up Display (HUD) with full-color interface conveniently projects speed, audio and navigation information onto the windshield with a variety of reconfigurable layouts. This system allows the driver to keep full attention on the road for a safer drive.

1. Vehicle user interfaces are products of Apple and Google and their terms and privacy statements apply. Requires compatible smartphone and data plan rates apply. 2. Cadillac CUE functionality varies by model. Full functionality requires compatible Bluetooth and smartphone. Some devices require USB connectivity. 3. Requires a compatible mobile device, active OnStar service and data plan. 4G LTE service available in select markets. Visit onstar.com for coverage map, details and system limitations. 4. The system wirelessly charges one PMA- or Qi-compatible mobile device. To check for phone or other device compatibility, see my.cadillac.com.

EXTERIOR

Performance-inspired styling. A long, low, lean design philosophy manifests itself in the dramatic angles and sleek aerodynamics that keep the CTS firmly planted to the road. From the sculptural inlaid hood to the integrated rear spoiler, every detail adds up to a look that speaks to its capabilities.

CRYSTALLINE LED LIGHTS

Brilliant. Hundreds of crystalline LED lights accentuate the CTS exterior, providing smooth illumination. Available High-Intensity Discharge (HID) headlamps are equipped with Adaptive Forward Lighting to precisely illuminate your path. And the decklid spoiler doubles as an LED center brake lamp, alerting those behind you when you press the brake.





INLAID HOOD

Dynamic even while standing still. The crisp, curved lines and sculptural elements of the inlaid hood yield a reflective, liquid-like surface so the CTS appears to be in motion, even when it's still.



ILLUMINATED DOOR HANDLES

Light up the night. Subtle lighting in the CTS door handles improves visibility while enhancing the long, chiseled lines of the exterior.



INTEGRATED REAR SPOILER

A sleek take on utility. The rear spoiler manages critical airflow for a firmly planted feel at higher speeds. At the same time, 48 bright LEDs illuminate when stopping as a signal to vehicles behind.

SAFETY

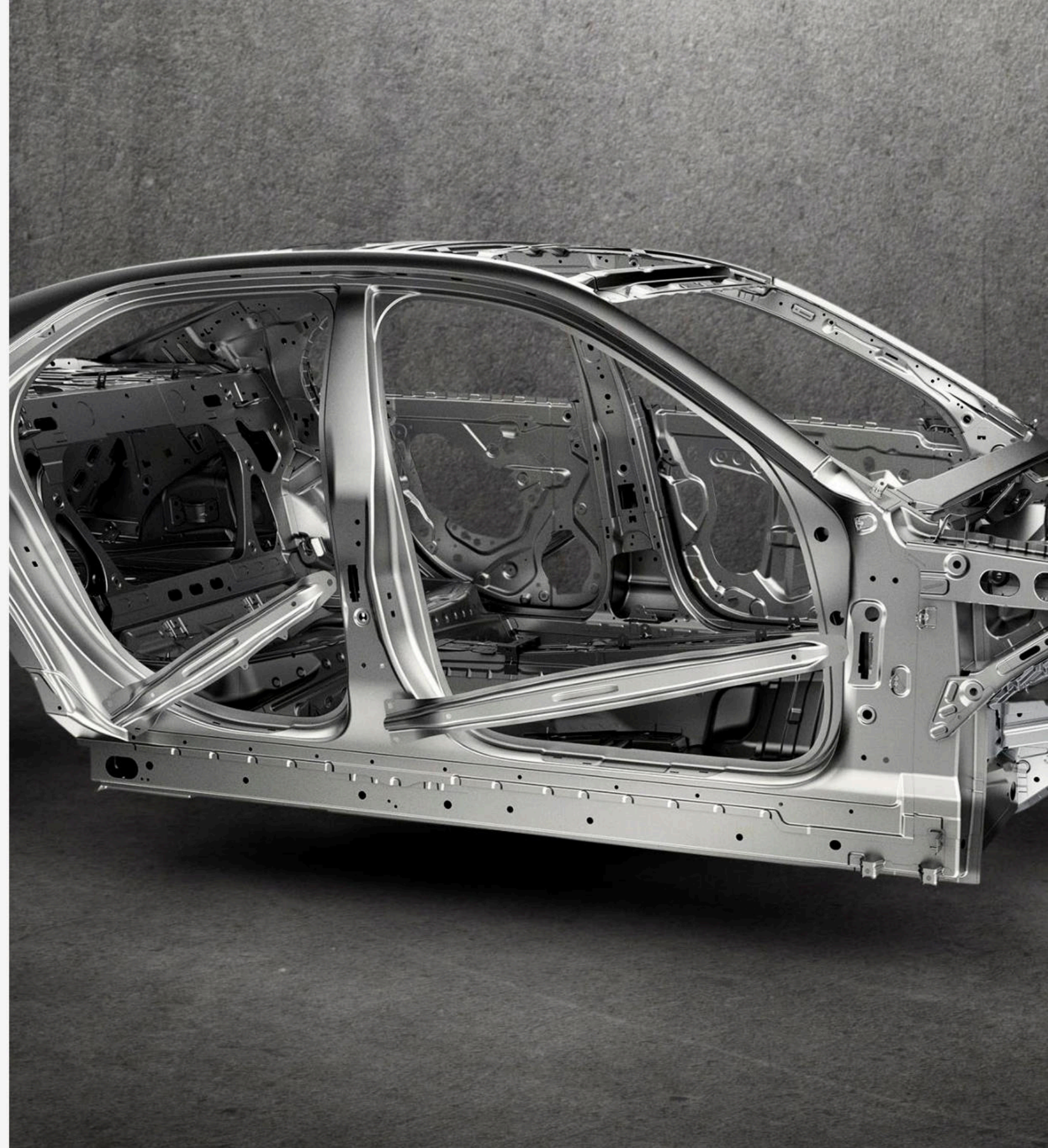
Drive with confidence. The CTS was painstakingly designed to help keep you and your passengers safe. Available proactive features such as Forward Collision Alert and Side Blind Zone Alert help to detect and alert the driver to avoid potentially dangerous driving scenarios.

SAFETY CAGE

The safety cage inside the CTS is constructed using ultra-high-strength steel and incorporates crumple zones to help absorb and manage crash energy. It's equipped with 10 standard air bags¹, including knee air bags¹ for the driver and front passenger and side-impact air bags¹ for rear passengers to help you feel well guarded.

Safety features are no substitute for the driver's responsibility to operate the vehicle in a safe manner. The driver should remain attentive to traffic, surroundings and road conditions at all times. Read the vehicle Owner's Manual for more important safety information.

¹ Always use safety belts and child restraints. Children are safer when properly secured in a rear seat in the appropriate child restraint. See the Owner's Manual for more information.





SIDE BLIND ZONE ALERT¹

Your extra set of eyes. Side Blind Zone Alert monitors your blind spots. If a vehicle is in your path when you're changing lanes, a light on the side mirror illuminates to alert you, helping to avoid a collision.

RAINSENSE WIPERS

Better visibility in inclement weather. Rainsense Wipers automatically engage when rainfall is detected. They also adjust their speed according to the rain's intensity so you can focus on the road, not the weather.

LANE KEEP ASSIST WITH LANE DEPARTURE WARNING

A safe direction. Lane Keep Assist gently turns the steering wheel if you approach a detected lane marking without using a turn signal. With Lane Departure Warning, you're alerted if you drift into another lane without using your turn signal.

REAR CROSS TRAFFIC ALERT

Progressive protection. Advanced sensors in the rear bumper alert you to vehicles approaching from either side.

FORWARD COLLISION ALERT

Always looking ahead. Forward Collision Alert uses camera technology to monitor traffic ahead and provide an alert if a potential collision is imminent.

¹ Before making a lane change, always check the Side Blind Zone Alert display, check the exterior and interior rearview mirrors, look over your shoulder for vehicles and hazards and start the turn signal.



INTELLIBEAM HEADLAMPS

Smarter illumination. Available IntelliBeam headlamps automatically switch to high beams when you're driving on dark roads. When sensors detect taillamps or oncoming headlamps, they're automatically switched back to low beams.

ADAPTIVE CRUISE CONTROL

Keep your distance. With the available Adaptive Cruise Control, a strategically placed radar and additional camera sensors monitor the gap of the traffic ahead to maintain a safe distance from vehicles to provide you with enough time to stop.



AUTOMATIC SAFETY BELT TIGHTENING

Protection you can feel. Available Automatic Safety Belt Tightening activates during emergency braking or sudden driver maneuvers. When conditions return to normal, they revert back again for your comfort.



FRONT AND REAR AUTOMATIC BRAKING

Braking when needed. Up to certain speeds, this available system senses potential front and rear collisions and automatically engages the brakes, helping to reduce the severity of the crash or may even help you avoid one at very low speeds.

STANDARD FEATURES

2016 CTS Features

DRIVETRAIN

2.0L Turbo Direct-Injection, VVT 4-Cylinder Engine With 268 hp and 295 lb-ft of torque with Auto Stop/Start
Transmission 8-speed automatic with performance algorithm shifting
Exhaust dual outlets with chrome tips
Rear-Wheel Drive

CHASSIS AND SUSPENSION

Brakes Brembo® front, four-wheel vented disc with antilock braking system, Duralife rotors and featuring Auto-Dry and intelligent Brake Assist
Steering ZF premium, speed-sensitive, variable-effort power rack-and-pinion, electric system
Suspension, 4-wheel Independent Front MacPherson-type with dual lower ball joints, twin-tube struts and direct-acting stabilizer bar; rear five-link with twin-tube shocks

EXTERIOR

Active Aero Grille Shutters
Grille With Galvano satin-chrome accents
Lighting
Projector halogen headlamps with LED vertical light signatures
Adaptive forward lighting
Daytime running lamps
Mirrors Body color, power, heated, with integrated turn signal indicators
Solar-Absorbing Windshield
Spoiler Rear decklid integrated with LED Center High-Mounted Stop Lamp (CHMSL)
Wheels 17" aluminum wheels with painted finish (see inside back cover for more details)
Windshield Wipers Driver-selectable variable speed

INTERIOR

Adaptive Remote Start Activates heated/ventilated seats (if equipped), climate control system and rear defroster
Air Filtration System Automatic air circulation and air quality
Armrest Center front and rear with hidden storage
Audio Cruise Control and Driver Information Center (DIC) controls
Audio System Bose® premium 11-speaker sound system
Bluetooth®¹ Hands-Free Calling and data-service streaming with natural voice recognition

1. Go to my.cadillac.com to find out which phones are compatible with the vehicle. **2.** Cadillac CUE functionality varies by model. Full functionality requires compatible Bluetooth and smartphone. Some devices require USB connectivity. **3.** Requires a compatible mobile device, active OnStar service and data plan. 4G LTE service available in select markets. Visit onstar.com for coverage map, details and system limitations. **4.** If you subscribe after your trial period, *subscriptions are continuous until you call SiriusXM to cancel.* See SiriusXM Customer Agreement for complete terms at www.siriusxm.com. Other fees and taxes will apply. All fees and programming subject to change. For more information about NavTraffic, visit siriusxm.com/navtraffic. For more information about Travel Link, visit siriusxm.com/travelink. XM satellite service is available only to those in the 48 contiguous U.S.A. and D.C. Sirius, XM and all related marks and logos are trademarks of Sirius XM Radio Inc. **5.** Not compatible with all devices. **6.** The system wirelessly charges one PMA- or Qi-compatible mobile device. To check for phone or other device compatibility, see my.cadillac.com. **7.** Always use safety belts and child restraints. Children are safer when properly secured in a rear seat in the appropriate child restraint. See the Owner's Manual for more information. **8.** Does not include emergency or security services. Visit onstar.com for coverage map, details and system limitations. **9.** Requires compatible mobile device and active OnStar subscription. Visit onstar.com for details and system limitations. **10.** Map coverage available in the United States, U.S. Virgin Islands, Puerto Rico and Canada. **11.** Before making a lane change, always check the Side Blind Zone Alert display and the side and inside rear mirrors, look over your shoulder for vehicles and hazards, and activate the turn signal. **12.** Do not use summer-only tires in winter conditions, as it would adversely affect vehicle safety, performance and durability. Use only GM-approved tire and wheel combinations. Unapproved combinations may change the vehicle's performance characteristics. For important tire and wheel information go to cadillacaccessories.com or see your dealer. **13.** Adaptive Cruise Control is no substitute for the driver's personal responsibility to operate the vehicle in a safe manner. The driver needs to remain attentive to traffic and road conditions and provide the steering, braking or other inputs necessary to retain control of the vehicle. **14.** Vehicles equipped with these linings will experience faster accumulation of brake dust on wheel surfaces and may produce more noise than with standard linings.

Cadillac CUE® (Cadillac User Experience)² Information and media control system with 8" diagonal full-color LCD capacitive multi-touch screen and Siri® Eyes Free and SMS text message alerts
Climate Control
Console Center Front with integrated shifter, covered storage and two cupholders with motorized cover
Console, overhead includes OnStar control and reading lamps; also includes universal home remote, UltraView Sunroof and power rear-window sunshade controls (if equipped)
Cruise Control Electronic, with set and resume speed
Door Locks Power programmable with lockout protection
Dual-Zone Automatic Climate Control With individual settings for driver and front passenger and Automatic Moisture Detection and Defogging

Electronic Parking Brake
Floor Mats Carpeted front and rear
Gauge Cluster With full-color reconfigurable Driver Information Center display
Glove Box Electronic push-button opening
HD radio
Keyless Access EZ Key full Keyless Access offers keyless entry to all doors and trunk
Keyless Ignition With Push-Button Start
Lighting LED lighting for glove box, front cupholders, overhead console, front and rear passenger footwell, map pockets, rear assist handles and cargo area
Magnesium Paddle-Shift Controls On steering wheel
Memory Package Two presets for driver's seat position and outside mirrors, and vehicle exit preset function
Mirror Frameless automatic-dimming rearview
OnStar 4G LTE With built-in Wi-Fi hotspot for up to seven devices³; includes a three-month or three-gigabyte data trial, whichever comes first

Power Outlets Three auxiliary
Rear Vision Camera Includes "guidelines" indicating the vehicle's projected path when vehicle is put in reverse
Rear Window Defroster
Retained Accessory Power Power windows, audio system and sunroof (if equipped) remain operational after ignition is switched off for 10 minutes or until driver's door is opened
Seating
5-Passenger
Front bucket
Rear, fixed seatback includes fold-down center armrest, integrated storage, dual cupholders and trunk access door
Head restraints, 4-way adjustable front and 2-way adjustable outboard rear
Driver and front-passenger 12-way power adjustments, plus 2-way power lumbar adjustments

SiriusXM Satellite Radio⁴ With three-month trial
Steering Wheel Leather-wrapped rim, with Audio, Driver Information Center and cruise controls and Manual-Adjustable Rake and Telescope
Universal Home Remote 3-channel
USB ports⁵ Three with auxiliary audio connectivity
Visors Driver and front passenger illuminated vanity mirrors
Windows Power, with front and rear express-up/-down; includes rear passenger lockout
Wireless Charging⁶ Inductive charging system for portable devices

SAFETY AND SECURITY

Air Bags⁷ Driver and front-passenger frontal, front-seat thorax and pelvic, rear thorax for outboard seating positions, side-curtain and driver and front-passenger knee
Audible Alert Theft-Deterrent System
Electronic Stability Control System StabiliTrak®
OnStar Basic Plan⁸ For 5 years, including limited RemoteLink mobile app⁹ services, Vehicle Diagnostics and Dealer Maintenance Notification
OnStar Guidance Plan⁹ Standard for one year, including Automatic Crash Response, Stolen Vehicle Assistance, Roadside Assistance, Turn-by-Turn Navigation and more (trial excludes Hands-Free Calling minutes)
Rear Park Assist
Safety Belts Lap and shoulder belts for all positions with belt-to-seat mounting and pretensioners for driver and front passenger, rear outboard comfort guides
Traction Control All-speed with brake and engine intervention

AVAILABLE FEATURES

All-Wheel Drive
Navigation¹⁰ Integrated with Cadillac CUE and includes voice and text guidance; includes Bose 13-speaker Centerpoint® Surround Sound system (requires Leather Seating Package)
Seating Package Includes leather seating surfaces, heated/ventilated driver and front passenger seats, outside, heated, power-adjustable, driver-side auto-dimming, body-color, manual folding mirrors with integrated turn signal indicators and puddle lamps, ambient lighting on instrument panel and door, heated power tilt and telescoping steering wheel

LUXURY

Enjoy 2016 CTS Features + these enhancements:

Bose 13-speaker Centerpoint Surround Sound System (requires navigation)
Driver Awareness Package Forward Collision Alert, Side Blind Zone Alert,¹¹ Lane Change Alert, Rear Cross Traffic Alert, Lane Keep Assist with Lane Departure Warning, IntelliBeam headlamps, Safety Alert Seat and Rainsense Wipers
Lighting HID headlamps with LED vertical light signatures
Adaptive Forward Lighting
Ambient Interior Lighting on instrument panel and doors
Mirrors Body color, power, heated, driver-side auto-dimming, with integrated turn signal indicators and puddle lamps
Navigation¹⁰ Integrated with Cadillac CUE and includes voice and text guidance
Seating Package Includes leather seating surfaces, heated/ventilated driver and front passenger seats, outside, heated, power-adjustable, driver-side auto-dimming, body-color, split-fold rear seats, manual folding mirrors with integrated turn signal indicators and puddle lamps, ambient lighting on instrument panel and door, heated power tilt and telescoping steering wheel
Steering Wheel Heated rim with power-adjustable rake and telescoping column
UltraView Sunroof Power, tilt-sliding, electric with express-open/-close over front-row seating and power sunshade
Windshield Wipers Automatic Rainsense Wipers with moisture detection
Wheels 17" aluminum wheels with Ultrabright finish (see inside back cover for more details)

AVAILABLE FEATURES

3.6L Direct-Injection, VVT V6 engine (LGX) with 335 hp and 285 lb-ft torque, Auto Stop/Start and Active Fuel Management
All-Wheel Drive
V-Sport Package Includes 18" V-Sport Midnight Silver aluminum wheels, summer-only tires,¹² sport suspension, Magnetic Ride Control, V-Sport Brake Package and V-Sport badged steering wheel
Wheels (see inside back cover for more details)
18" aluminum wheels with premium painted finish
18" aluminum wheels with polished finish

PERFORMANCE

Enjoy Luxury Features + these enhancements:

Door Handles Illuminating
Head-Up Display Full-color, configurable
Heated Rear Outboard seating positions
Magnetic Ride Control
Park Assist Front and Automatic Parking Assist (parallel and perpendicular)
Power Outlet 110V household-style power outlet located in front center console
Sunshades Power rear, manual rear side
Surround Vision Bird's-eye view of vehicle
Tri-Zone Climate Control For driver, front passenger and rear seating areas
Wheels 18" aluminum wheels with premium painted finish (see inside back cover for more details)

AVAILABLE FEATURES

3.6L Direct-Injection, VVT V6 engine (LGX) with 335 hp and 285 lb-ft torque, Auto Stop/Start and Active Fuel Management
Advanced Security Package
All-Wheel Drive
Driver Assist Package Adaptive Cruise Control,¹³ Front/Rear Automatic Braking and Automatic Safety Belt Tightening,
Seat And Cluster Package 20-way performance full-leather driver and front passenger seats; reconfigurable high-definition gauge cluster, with two themes: Enhanced and Balanced; and aluminum sport pedals
Seating Semi-Aniline full-leather
V-Sport Package Includes 18" V-Sport Midnight Silver aluminum wheels, summer-only tires,¹² sport suspension, Magnetic Ride Control, V-Sport Brake Package and V-Sport badged steering wheel
Wheels (see inside back cover for more details)
18" aluminum wheels with polished finish
19" aluminum wheels with polished finish

V - SPORT

Enjoy Luxury Features + these changes:

3.6L Direct-Injection, DOHC, VVT, V6 Twin Turbo With 420 hp and 430 lb-ft of torque with performance modes including cornering control, fast off and brake assist
Rear Wheel Drive
Automatic Parking Assist Includes front, rear, parallel and perpendicular parking assist
Brakes Brembo front, performance, 4-wheel antilock, 4-wheel disc
Electronic Limited Slip Differential (eLSD)
Gauge Cluster With full-color reconfigurable Driver Information Center display
Grille With black chrome accents
Park Assist Front and rear
Steering Wheel Leather-sport
Wheels 18" aluminum wheels with Midnight Silver premium painted finish (see inside back cover for more details)

NOTE: Sunroof not available on V-Sport

AVAILABLE FEATURES

Performance Brake Linings¹⁴

PREMIUM

Enjoy Performance Features + these enhancements:

Advanced Security Package
Aluminum Sport Pedals
Driver Assist Package Adaptive Cruise Control,¹³ Front/Rear Automatic Braking and Automatic Safety Belt Tightening,
Gauge Cluster Reconfigurable, high-definition with two themes: Enhanced and Balanced
Seating Full-leather, 20-way performance driver and front passenger seats
Wheels 18" aluminum wheels with polished finish (see inside back cover for more details)

AVAILABLE FEATURES

3.6L Direct-Injection, VVT V6 Engine (LGX) with 335 hp and 285 lb-ft torque, Auto Stop/Start and Active Fuel Management
All-Wheel Drive
Seating Semi-Aniline full-leather
V-Sport Package Includes 18" V-Sport Midnight Silver aluminum wheels, summer-only tires,¹² sport suspension, Magnetic Ride Control, V-Sport Brake Package and V-Sport badged steering wheel
Wheels 19" aluminum wheels with polished finish (see inside back cover for more details)

V - SPORT PREMIUM

Enjoy V-Sport Features + these enhancements:

Advanced Security Package
Aluminum Sport Pedals
Driver Assist Package Adaptive Cruise Control,¹³ Front/Rear Automatic Braking and Automatic Safety Belt Tightening,
Gauge Cluster Reconfigurable with three themes: Enhanced, Balanced or Performance
Head-Up Display Full color, configurable
Heated rear Outboard seating positions
Illuminating Door Handles
Power Outlet 110V household-style power outlet located in front center console
Seating Full-leather seating surfaces, 20-way performance driver and front passenger seats
Sunshades Power rear, manual rear side
Tri-Zone Climate Control For driver, front passenger and rear seating areas
UltraView Sunroof Power, tilt-sliding, electric with express-open/-close over front-row seating and power sunshade
Wheels 18" aluminum wheels with Ultrabright machined finish and Midnight Silver painted pockets (see inside back cover for more details)

AVAILABLE FEATURES

Performance Brake Linings¹⁴
Seating Semi-Aniline full-leather

VEHICLE DIMENSIONS

SELECT CTS DIMENSIONS

All measurements in inches.

EXTERIOR

Wheelbase	114.6
Overall Length	195.5
Body Width	72.2
Body Width (with mirrors)	80.8
Overall Height	57.2
Front Track Width	61.4
Rear Track Width	61.7

INTERIOR

Head Room, Front	40.4
Head Room, Rear	37.5
Leg Room, Front	45.7
Leg Room, Rear	35.4
Shoulder Room, Front	56.9
Shoulder Room, Rear	54.8

SELECT CTS CAPACITIES

Fuel (gal., approx.)	19.0
Cargo Volume (cu. ft.)	13.7
Seating Capacity	5

OWNER BENEFITS

We have created the most comprehensive suite of owner benefits offered by any prestige automotive brand in the world, providing everything our Cadillac owners need and everything they deserve.

PREMIUM CARE MAINTENANCE

The Cadillac Premium Care Maintenance program¹ covers routine oil changes, tire rotations, certain air filter replacements and a thorough multi-point vehicle inspection for 4 years or 50,000 miles².

WARRANTY PROTECTION

All Cadillac vehicles come with a 6-year or 70,000-mile³ Powertrain Warranty. In addition, our 4-year or 50,000-mile³ bumper-to-bumper limited warranty covers repairs on your entire vehicle, including parts and labor, to correct any concerns in materials or workmanship.

ROADSIDE ASSISTANCE

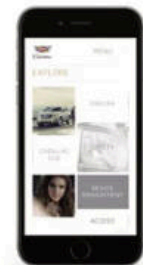
Cadillac offers more years of standard Roadside Assistance than any leading luxury automaker, with services for 6 years or 70,000 miles³. This 24/7 program provides lockout, towing, refueling, Dealer Technician Roadside services and more.

COURTESY TRANSPORTATION

This program provides alternative transportation and/or reimbursement of certain transportation expenses if your Cadillac requires warranty repairs for 6 years or 70,000 miles³. That is more years of service standard than any leading luxury automaker.

MY CADILLAC APP⁴

The ingenuity of the CTS doesn't stop with the vehicle. As a Cadillac owner, an advanced app is available for your new car. From virtually anywhere at any time, a few taps of your finger on your iPhone[®] or Android[™] smartphone let you access features such as parking reminders, Roadside Assistance and more. Plus, in conjunction with the OnStar RemoteLink app, you'll have the ability to remotely start your vehicle (when factory-equipped with remote start) from any place you have cell service and lock and unlock your doors. In addition, you can access key diagnostic information, including fuel tank level and range and remaining oil life.



ONSTAR

Standard for one year, the OnStar Guidance Plan⁵ (trial excludes Hands-Free Calling minutes) lets you connect to a specially trained OnStar Advisor just by pushing the blue OnStar button in your CTS.

AVAILABLE ONSTAR 4G LTE AND BUILT-IN WI-FI[®] HOTSPOT⁶

Now your CTS has an available built-in Wi-Fi hotspot, for connecting up to seven tablets, laptops or other devices at 4G LTE speed, so the content you crave is always headed where you are. Requires a data plan after the 3-month or 3 gigabyte data trial (whichever comes first).

ONSTAR BASIC PLAN⁷

With the Basic Plan, you've got a powerful connection to your vehicle and the world around you standard for five years at no additional cost to you. You'll have access to select services, which include limited features of the OnStar RemoteLink mobile app that lets you remote start your car, pinpoint your vehicle on a map on your smartphone and manage your vehicle's Wi-Fi hotspot. Plus, send a destination to your in-vehicle navigation screen (if equipped) and lock or unlock your doors—all from your mobile device. Your vehicle can run diagnostic checks on itself and remind you of servicing needs by email.

AUTOMATIC CRASH RESPONSE

In a crash, built-in sensors can automatically alert an OnStar Advisor who is immediately connected into your vehicle to see if you need help—even if you can't ask for it.

EMERGENCY SERVICES

One push of the red emergency button gives you a priority connection to a specially trained OnStar Advisor who can direct emergency services to your exact location and offer critical assistance until help arrives. With OnStar, you're never alone.

CRISIS ASSIST

During severe weather or other crisis situations, OnStar can provide a quick, central point of contact when you need emergency assistance, navigation help or information.

ROADSIDE ASSISTANCE⁸

If you're stranded, have a flat tire or need a tow truck, just ask an OnStar Advisor to get help to your exact location to get you back on the road quickly.

STOLEN VEHICLE ASSISTANCE⁹

If your vehicle is stolen, OnStar can use GPS to pinpoint and work with authorities to quickly help recover it. On many models, an Advisor can send a signal to slow the vehicle or prevent it from being restarted. And with the new Theft Alarm Notification feature, if your car alarm sounds, you'll receive a notification by text, email or phone call.

TURN-BY-TURN NAVIGATION¹⁰

Getting directions is as easy as pushing a button and telling an Advisor where you want to go. Destinations are quickly downloaded to your car, and a voice calls out every turn. An Advisor can also help you with a database of over 14 million points of interest. To plan routes in advance, you can send destinations to your vehicle through an Advisor or the OnStar RemoteLink mobile app.

ONSTAR 4G LTE CONNECTION⁵

With powerful 4G LTE connectivity built right into your vehicle, you have your very own mobile command center that provides faster service delivery and lets you stay connected on the go.

ONSTAR REMOTELINK MOBILE APP¹¹

You can remotely start your vehicle, locate your vehicle on a map, lock or unlock your doors, honk your horn and flash your lights. You can also send destinations to your vehicle through your smartphone.

REMOTE SERVICES¹²

A simple call to an OnStar Advisor can send a signal to unlock your doors, honk the horn and flash the lights or remote start your vehicle. It's technology hard at work to get you back on the road.

HANDS-FREE CALLING¹³

Your vehicle has built-in Hands-Free Calling to help keep you safely connected when your cell phone isn't available. Choose from minute bundles or a minutes-per-month plan.

ATYOURSERVICE¹⁴

OnStar AtYourService is a new way to discover value in the places you go. You get valuable offers for better ways to eat, shop, work and play, through a simple push of the blue OnStar button.

ADVANCED DIAGNOSTICS¹⁵

Feel confident and safe knowing you have a self-diagnosing vehicle. Now your vehicle can easily run a check on its key systems and send you a monthly diagnostics report. You'll know more and worry less with Advanced Diagnostics.

DEALER MAINTENANCE NOTIFICATION¹⁵

Is it time for a tire rotation? An oil change? Or a new air filter? You'll always know because your car can email your diagnostics report to the dealer when it's time, and the dealer will contact you to set up a service appointment.

¹. Standard on all 2011 or newer vehicles. ². Whichever comes first. See dealer for select scheduled maintenance details. ³. Whichever comes first. See dealer for limited warranty details. ⁴. Requires iPhone or Android mobile device. ⁵. Visit onstar.com for coverage map, details and system limitations. OnStar acts as a link to existing emergency service providers. ⁶. Requires a compatible mobile device, active OnStar service and data plan. 4G LTE service available in select markets. Visit onstar.com for coverage map, details and system limitations. ⁷. Does not include emergency or security services. Visit onstar.com for coverage map, details and system limitations. ⁸. Roadside service provided by Allstate Roadside Services. Visit onstar.com for details and system limitations. Services vary by model and conditions. ⁹. Services vary by model and conditions. Visit onstar.com for vehicle availability, details and system limitations. ¹⁰. Requires Guidance plan. Visit onstar.com for coverage map. Services vary by model. ¹¹. Requires compatible mobile device and

active OnStar subscription. Visit onstar.com for details and system limitations. ¹². Visit onstar.com for coverage map, details and system limitations. Services vary by model and conditions. Unlock feature requires automatic locks. Remote start requires factory-installed and enabled remote start system. ¹³. OnStar Hands-Free Calling requires an existing OnStar service contract and available minutes. Not available in certain markets. Visit onstar.com for coverage map, details and system limitations. ¹⁴. Not available on Basic Plan. Valid offers can vary. Check AtYourService through the RemoteLink mobile app for latest offers. ¹⁵. Capabilities vary by model. Visit onstar.com for details and system limitations. Message and data rates may apply. Requires active OnStar service, email address on file and enrollment in Advanced Diagnostics.

ABOUT THIS CATALOG

We have tried to make this catalog comprehensive and factual. We reserve the right, however, to make changes at any time, without notice, in prices, colors, materials, equipment, specifications, models and availability. Specifications, dimensions, measurements, ratings and other numbers in this catalog and other printed materials provided at the dealership or affixed to vehicles are approximates based upon design and engineering drawings and prototypes and laboratory tests. Your vehicle may differ due to variations in manufacture and equipment. Since some information may have been updated since the time of printing, please check with your Cadillac dealer for complete details. Any variations in colors shown are due to reproduction variation in the printing process. Cadillac reserves the right to lengthen or shorten the model year for any product for any reason, or start and end model years at different times. Note: Some photographs in this catalog show vehicles with optional equipment.

ENGINES

Cadillac products are equipped with engines produced by GM Powertrain or suppliers to GM worldwide. The engines in Cadillac products may also be used in other GM makes or models.

ASSEMBLY

Cadillac vehicles and their components are assembled or produced by different operating units of General Motors, its subsidiaries or suppliers to GM worldwide. We sometimes find it necessary to produce Cadillac vehicles with different or differently sourced components than originally scheduled. Since some options may be unavailable when your vehicle is assembled, we suggest that you verify that your vehicle includes the equipment you ordered or, if there are changes, that they are acceptable to you.

UPDATED SERVICE INFORMATION

Cadillac dealers receive useful service bulletins about Cadillac products. You may purchase them from Helm Incorporated by calling 1-800-782-4356 or by visiting www.helminc.com.

NEW-VEHICLE LIMITED WARRANTY

World-class coverage comes standard on every 2016 Cadillac. This warranty is for Cadillac vehicles registered in the U.S.A. See your Cadillac dealer for terms and conditions.

COVERED FOR 6 YEARS/70,000 MILES (WHICHEVER COMES FIRST)

Powertrain limited warranty with no deductible, Roadside Assistance Program¹ and Courtesy Transportation Program¹

COVERED FOR 4 YEARS/50,000 MILES (WHICHEVER COMES FIRST)

Bumper-to-bumper coverage. Tires — defects in material and workmanship; repairs made to correct any vehicle defect; corrosion on body sheet metal panels.

RUST-THROUGH COVERAGE

Cadillac vehicles are designed and built to resist corrosion and rust-through corrosion. Any body sheet metal that rusts through (in the form of an actual hole in the sheet metal) is covered for six years and unlimited mileage. Cosmetic or surface corrosion—resulting from stone chips or scratches in the paint, for example—is not included in the rust-through coverage. Application of additional rust-inhibiting materials is not required under the rust-through coverage and none is recommended. See your Cadillac dealer for terms of this limited warranty.

FLEET ORDERS

Some standard content may be deleted with fleet orders. See dealer for details.

¹ Roadside Assistance Program and Courtesy Transportation Program are not part of the New-Vehicle Limited Warranty. A separate booklet titled, "Warranty and Owner Assistance Information" furnished with each new vehicle provides detailed warranty coverage information.

©2016 General Motors. All rights reserved. GM, the GM emblem, Cadillac, the Cadillac Crest, OnStar, the OnStar emblem and the slogans, emblems, vehicle model names, vehicle body designs and other marks appearing in this catalog are the trademarks and/or service marks of General Motors, its subsidiaries, affiliates or licensors. Apple, iPhone and Apple CarPlay are trademarks of Apple Inc., registered in the U.S. and other countries. Android is a trademark of Google, Inc. The trademark BlackBerry is owned by Research In Motion Limited and is registered in the United States and may be pending or registered in other countries. General Motors is not endorsed, sponsored, affiliated with or otherwise authorized by Research In Motion Limited. Bose and Centerpoint are registered trademarks of Bose Corporation. Windows is a registered trademark of Microsoft, Inc. Pandora is a registered trademark of Pandora Media, Inc. SiriusXM Satellite Radio is a registered trademark of Sirius XM Radio Inc. Blu-ray is a trademark of Blu-ray Disc Association. Wi-Fi is a registered trademark of Wi-Fi Alliance®

WHEELS



17" ALUMINUM WHEELS WITH PAINTED FINISH

Standard on CTS.



17" ALUMINUM WHEELS WITH ULTRABRIGHT FINISH

Standard on CTS Luxury Collection



18" ALUMINUM WHEELS WITH PREMIUM PAINTED FINISH

Standard on CTS Performance Collection. Available on CTS Luxury Collection



18" ALUMINUM WHEELS WITH POLISHED FINISH

Available on CTS Luxury, Performance and Premium Collections



18" ALUMINUM WHEELS WITH POLISHED FINISH

Standard on CTS Premium Collection. Available on CTS Performance Collection



19" ALUMINUM WHEELS WITH POLISHED FINISH

Available on CTS Performance and Premium Collections; includes all-season, blackwall, run-flat tires¹



18" ALUMINUM WHEELS WITH MIDNIGHT SILVER PREMIUM PAINTED FINISH

Standard on CTS V-Sport; includes performance, summer-only² run-flat tires. Included in V-Sport Package on CTS Luxury, Performance and Premium Collections



18" ALUMINUM WHEELS WITH ULTRABRIGHT MACHINED FINISH AND MIDNIGHT SILVER PAINTED POCKETS

Standard on CTS V-Sport Premium Collection; includes performance, summer-only² run-flat tires

¹ Low-profile tires wear faster, and wheel and tire damage may occur on rough or damaged roads from surfaces or curbs, debris or obstacles. This damage is not covered by the GM New Vehicle Limited Warranty. ² Do not use summer-only tires in winter conditions, as it would adversely affect vehicle safety, performance and durability. Use only GM-approved tire and wheel combinations. Unapproved combinations may change the vehicle's performance characteristics. For important tire and wheel information, go to cadillacaccessories.com or see your dealer. Low-profile tires wear faster, and wheel and tire damage may occur on rough or damaged roads from surfaces or curbs, debris or obstacles. This damage is not covered by the GM New Vehicle Limited Warranty.

EXTERIOR COLORS

RADIANT SILVER METALLIC



MOONSTONE METALLIC¹



CRYSTAL WHITE TRICOAT¹



COCOA BRONZE METALLIC¹



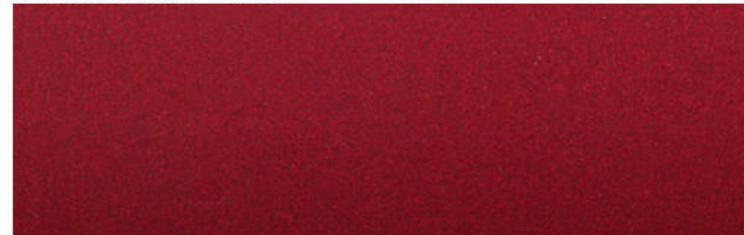
SILVER COAST METALLIC¹



DARK ADRIATIC BLUE METALLIC¹



RED OBSESSION TINTCOAT¹



PHANTOM GRAY METALLIC¹



BLACK RAVEN



STELLAR BLACK METALLIC¹

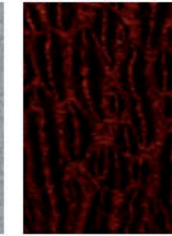


INTERIOR COMBINATIONS

LIGHT PLATINUM
LEATHERETTE



HIGH-GLOSS
SAPELE
WOOD TRIM



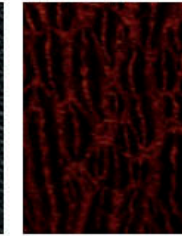
JET BLACK
ACCENTS



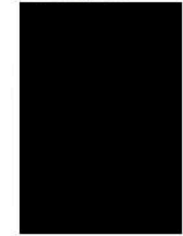
JET BLACK
LEATHER SEATING SURFACES



NATURAL
SAPELE
WOOD TRIM



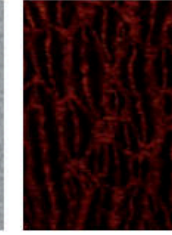
JET BLACK
ACCENTS



LIGHT PLATINUM
LEATHER SEATING SURFACES



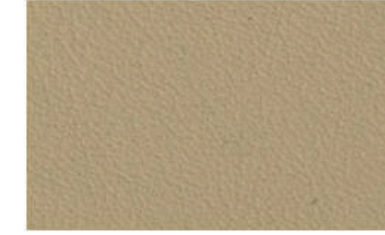
NATURAL
SAPELE
WOOD TRIM



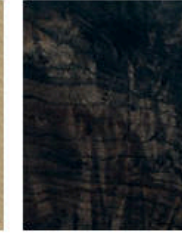
JET BLACK
ACCENTS



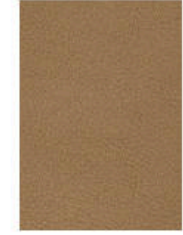
LIGHT CASHMERE
LEATHER SEATING SURFACES



BLACK
OLIVE ASH
WOOD TRIM



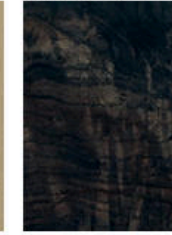
MEDIUM
CASHMERE
ACCENTS



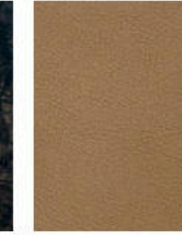
LIGHT CASHMERE
FULL-LEATHER SEATS²



BLACK
OLIVE ASH
WOOD TRIM



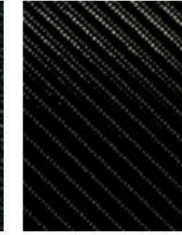
MEDIUM
CASHMERE
ACCENTS



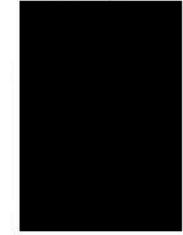
JET BLACK
FULL-LEATHER SEATS²



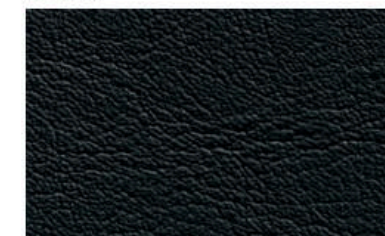
CARBON
FIBER TRIM



JET BLACK
ACCENTS



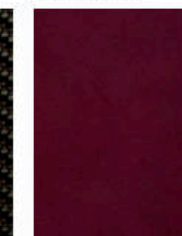
JET BLACK
SEMI-ANILINE FULL-LEATHER
SEATS²



MORELLO
RED CARBON
FIBER TRIM



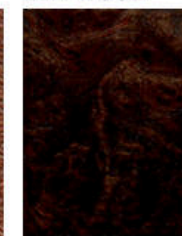
MORELLO RED
ACCENTS



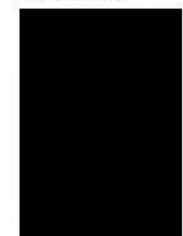
KONA BROWN
SEMI-ANILINE FULL-LEATHER
SEATS²



NATURAL
FINISH
ELM WOOD



JET BLACK
ACCENTS



1. Available at extra cost.
2. Full-leather seating available at extra cost.



Cadillac

CADILLAC.COM