

2 0 1 7



Cadillac

DARE GREATLY

V-SERIES



ATS-V COUPE ATS-V SEDAN CTS-V SEDAN



BETWEEN THE TRACK
AND ROAD THERE COULD BE
ALL THE DIFFERENCE
IN THE WORLD.
AND NONE AT ALL.



A vehicle as formidable on the track as it is comfortable on the road. Whose pleasures, mile after mile, are matched only by how it masters a quarter-mile. The refined made raw. The practical made passionate. The challenge of making a track-capable performer that's also a premier daily driver met, magnificently. Performance, innovation and craftsmanship taken to another level.

The 2017 Cadillac V-Series.

NO MATTER WHERE YOU'RE
HEADED, PERFORMANCE
BECKONS YOU FORWARD



Thunderous horsepower. Lightning-fast reflexes. Simply brilliant braking. On the track, these pillars of V-Series performance make all things possible. On the street, they make every drive infinitely memorable.



P E R F O R M A N C E



CTS-V in Crystal White Tricoat. Shown with available equipment.



RAW POWER AT ITS MOST REFINED

Designed specifically for ATS-V, the 3.6L 464 hp Twin Turbo produces 445 lb-ft of torque, for acceleration best thought of in terms of lift-off. Combined with high-strength, lightweight titanium connecting rods, low-inertia titanium-aluminide turbine wheels and a patented low-volume, charge-air cooler, it goes from 0 to 60 mph in a class-leading 3.8 seconds.

The CTS-V 6.2L V8 supercharged develops 640 hp and 630 lb-ft of torque, racing you from 0 to 60 in 3.7 seconds, with a racetrack top speed of 200 mph. A compact, efficient 1.7 liter, 4-lobe Eaton® supercharger, with specially engineered rotors, generates boost early in the rpm band for faster response. And direct injection, continuously Variable Valve Timing technology and Active Fuel Management make everyday driving as efficient as it is exhilarating.

6-GEARS, IMMEASURABLE CONTROL

The ATS-V TREMEC 6-speed manual transmission is standard and equipped with an incredibly satisfying short-throw shifter and dual-disc clutch. Combined with features like No-Lift Shift and Active Rev Matching, it's perfect for harnessing V-Series power.

THE RIGHT GEAR RIGHT NOW

The 8-speed automatic transmission features Performance Algorithm Shifting. Automatically activated by intense g-forces, this technology seamlessly selects the best gear for quicker shifts and faster lap times. For even more control, Magnesium Paddle Shifters let you tap through the gears for refined acceleration and deceleration.



**CORNERING:
CONSISTENT, COMMANDING**

The V-Series vehicles offer competition spec traction and stability controls. Performance Traction Management (PTM) integrates traction and engine control systems for improved and consistent cornering. Enter Track Mode and choose from five driver-selectable levels of control: Wet, Dry, Sport 1, Sport 2 or Race.

CURVES, CONQUERED

During aggressive cornering — or on curvaceous on/off ramps — the electronic Limited-Slip Differential (eLSD) automatically directs power to the rear wheel with the most traction for great control and fast exit speeds.

INNOVATION, FULL STOP

Front and rear Brembo® brakes are standard V-Series equipment. Front mono-block brake calipers are carved from a single block of lightweight aluminum alloy — for firm pedal feel and unmatched confidence. Front brake discs feature a two-piece rotor design for superior heat resistance, performance and durability. In addition, a class-exclusive Ferritic Nitro-Carburizing process greatly reduces corrosion on the rotors, helping maintain stopping power and prolong brake life.

THE ROAD: A QUICK READ

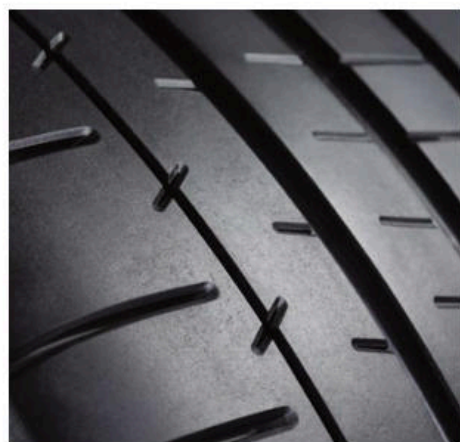
At a rate of 1000 times per second, Magnetic Ride Control reads the road to adjust the suspension to surface, wheel and weather conditions. At 60 mph, this V-tuned technology's reaction time is so fast it reads literally every inch of pavement traveled, for a more confident feel on the track, and less feeling of things like uneven pavement and potholes on the road.

THE RUBBER MEETS THE ROAD BRILLIANTLY

Manufactured in a high-security factory, V-Series Michelin® Pilot® Super Sport summer-only tires¹ feature a unique tri-compound design. The outer shoulder is particularly resistant to the wear associated with aggressive cornering. The tread's center ribs are optimized for steering and handling and the inner shoulder is designed to slice through water, providing grip on the road. These tires also feature R-compound — the R stands for racing. Rarely seen on street vehicle tires, this technology delivers unmatched grip.

PROGRAMMED TO RESPOND INSTANTLY

V-Series ZF electronic power-assist steering adjusts its timing for precise, quick and deeply satisfying steering feedback.



¹ Do not use summer-only tires in winter conditions, as it would adversely affect vehicle safety, performance and durability. Use only GM-approved tire and wheel combinations. Unapproved combinations may change the vehicle's performance characteristics. Lower profile tires damage more easily, especially on rough roads. Damage is not covered under warranty. For important tire and wheel information, go to <https://my.cadillac.com/learnAbout/cadillactires/> or see your dealer.



*There are many
ways to measure
performance*





REVIEW YOUR RUN

The available Performance Data Recorder captures your track driving—recording video, audio and performance data in real time that can be viewed on the Cadillac CUESM screen or saved on an SD card to watch later. The system's four overlays—Sport, Track, Performance or Tour—help analyze your skills.

For an even more detailed analysis, the Performance Data Recorder can be used in conjunction with the Cosworth Toolbox. Used by professional racing teams, this software provides a turn-by-turn breakdown of your run to improve your driving skills. Visit cosworth.com/toolbox-cadillac to download the software.

The Performance Data Recorder also offers a video-only Valet Mode, so you know how the people parking your V-Series are treating it.

TURBOCHARGERS: SERIOUS SPOOLING

With No-Lift Shift, you don't have to let off the gas when switching gears. This keeps the turbochargers spooling, so there's a faster return to full power when you re-engage a gear.

GREEN LIGHT OR GREEN FLAG—GO

Launch Control monitors traction activity, allows engine, transmission and suspension to work together for maximum, full-throttle acceleration off the line, resulting in better 0-60 times.



ATS-V Sedan in Velocity Red. Shown with available equipment.

1. Cadillac CUE functionality varies by model. Full functionality requires compatible BluetoothSM and smartphone. Some devices require USB connectivity.



A FORMIDABLE FRAME

A stiffened, lightweight structure allows the V-Series to be track-capable from the factory. The V-Series boasts a multi-link MacPherson strut independent front suspension, focused on delivering a quicker response and lateral control. 5-link independent rear suspension achieves all-out track performance while maintaining everyday comfort.

LESS WEIGHT, MORE STRENGTH

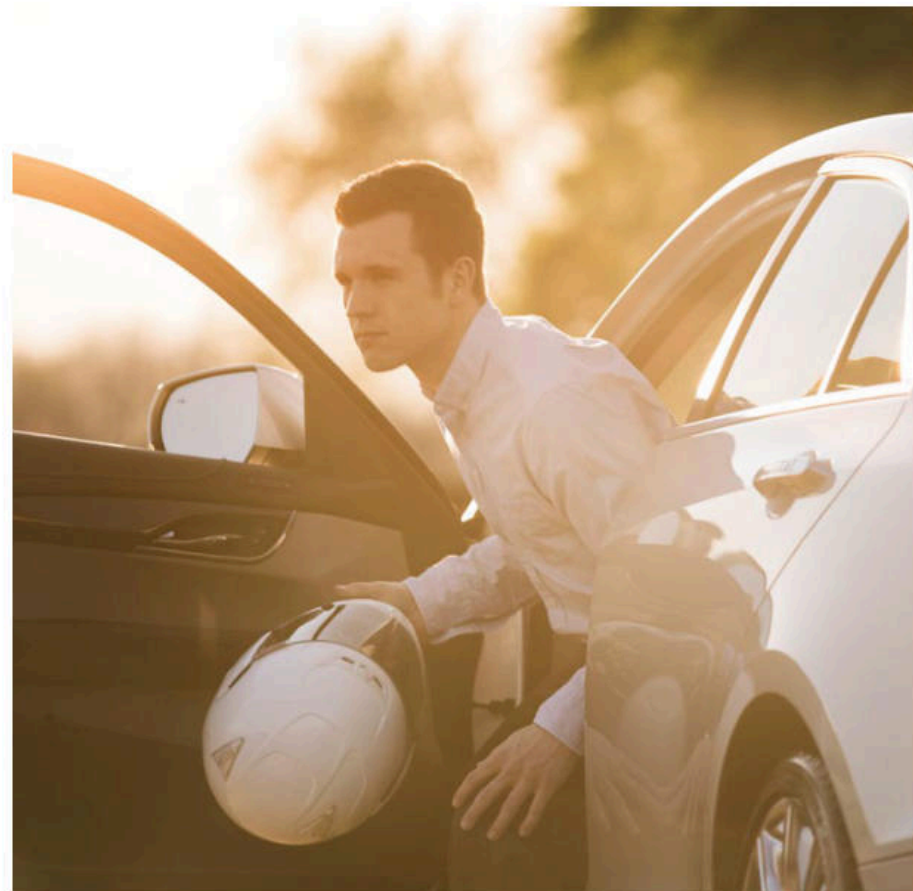
The V-Series is equipped with a carbon fiber hood—standard. An available carbon fiber package employs this lightweight, yet incredibly strong material in the symmetrical design of a front splitter, hood vent, rear diffuser and, on the CTS-V only, the rear spoiler.

MORE THAN A STUNNING STANCE

The V-Series aerodynamic stance also plays a crucial role in performance. The front splitter and front hood vent steer air around or over the vehicle to reduce lift. The iconic mesh grille is engineered for maximum airflow to the engine. A dramatic rear spoiler creates downward force to keep V-Series tires planted firmly on the roadway.

POWER KEEPS ITS COOL

The V-Series extra large water/oil cooler, large-capacity radiator, multiple heat exchangers and a rear differential oil cooler—along with the advantages they bring—will all be familiar to racing enthusiasts.



**MEASURE HEARTBEATS
IN HOT LAPS**

Arrive at the V-Performance Academy and unleash the full potential of race-inspired V-Series features during a two-night stay, with the purchase of an ATS-V or CTS-V.

From acceleration, to drifting, to cornering, train with professional drivers and hone advanced driving techniques within the luxury of Spring Mountain accommodations.

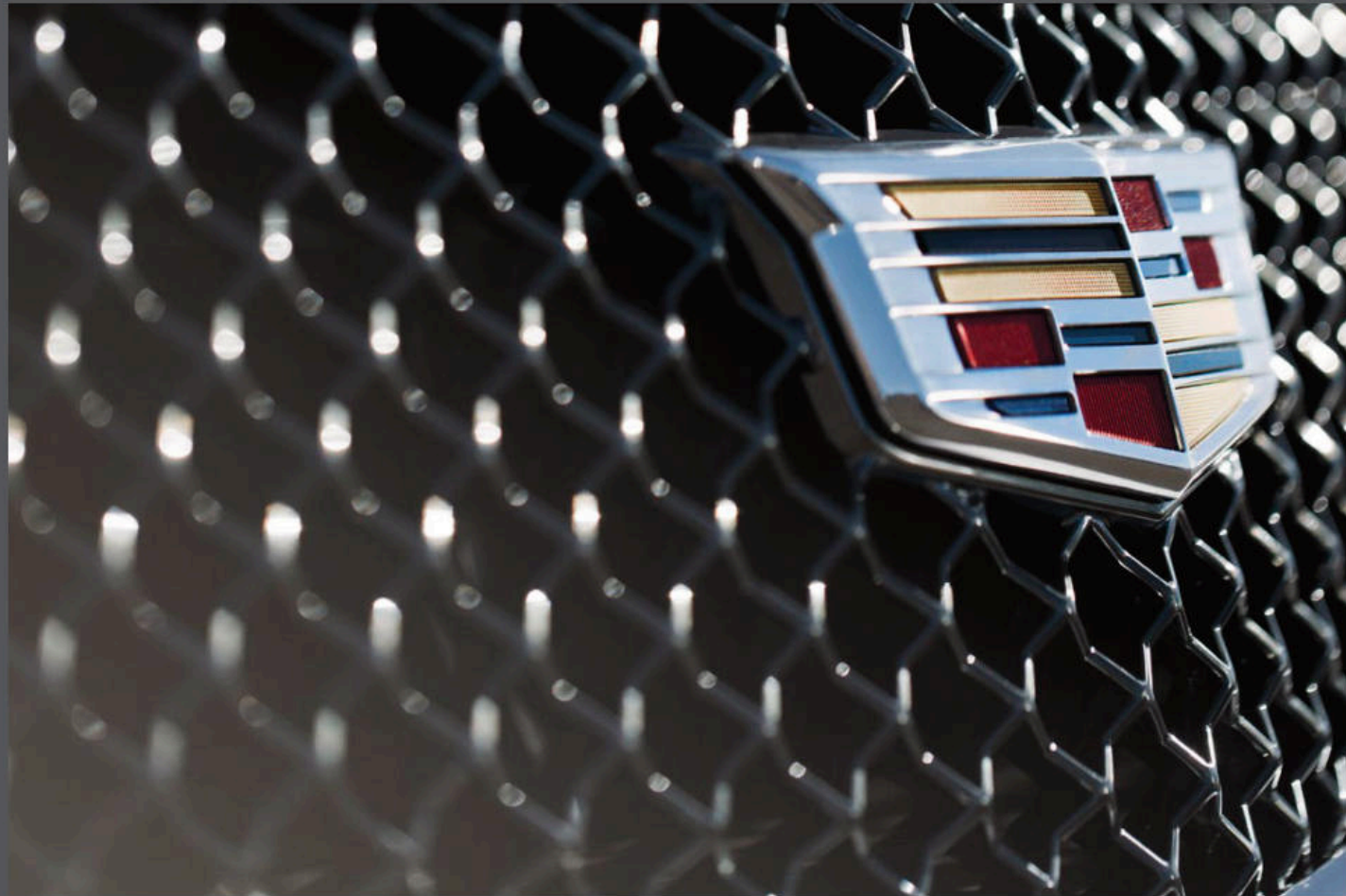
To confirm your reservation or discuss further details, speak with your local Cadillac Specialist.

The complimentary V-Performance Academy experience includes ground transportation to/from Las Vegas International Airport. Must be 21 years of age. Valid driver's license required. Two (2) nights lodging in the Spring Mountain luxury condominiums. Breakfast and Lunch on both Training days. 2nd night dinner at the Spring Mountain Clubhouse. General admission access for one designated Guest. On-site courtesy vehicles to be provided. Courtesy Vehicles shall not be used in the city of Las Vegas after 6pm, with exception of airport transfer, or by anyone under 21 years of age ever.



CTS-V in Red Obsession Tintcoat. Shown with available equipment.

ATTENTION TO
DETAIL IS KEY
TO THE
PERFECT FINISH



It can be found in a perfectly balanced camshaft, and the rhythmic power it creates. Found, too, in an audio speaker that sits so perfectly in a leather panel it appears to float. It is craftsmanship and an attention to detail as breathtaking as a perfectly executed curve. Perfect execution being the only acceptable standard.





ATS-V Coupe Jet Black interior. Shown with available equipment.

SPIRITED SUPPORT

Available RECARO® front seats feature a handcrafted shape that cradles your body during cornering. Along with slip-resistant sueded panels and adjustable bolsters, their design takes the work out of staying in place during aggressive maneuvers.

And Memory Pneumatic Lumbar Support counters the stresses associated with sitting, especially on longer drives.

PLEASED TO BE SEATED

V-Series 18- or 20-way front Sport Seats come leather-trimmed with sueded microfiber inserts. All V-Series vehicles have heated, power-adjustable seats and manual thigh support. (CTS-V performance seats are also ventilated.)

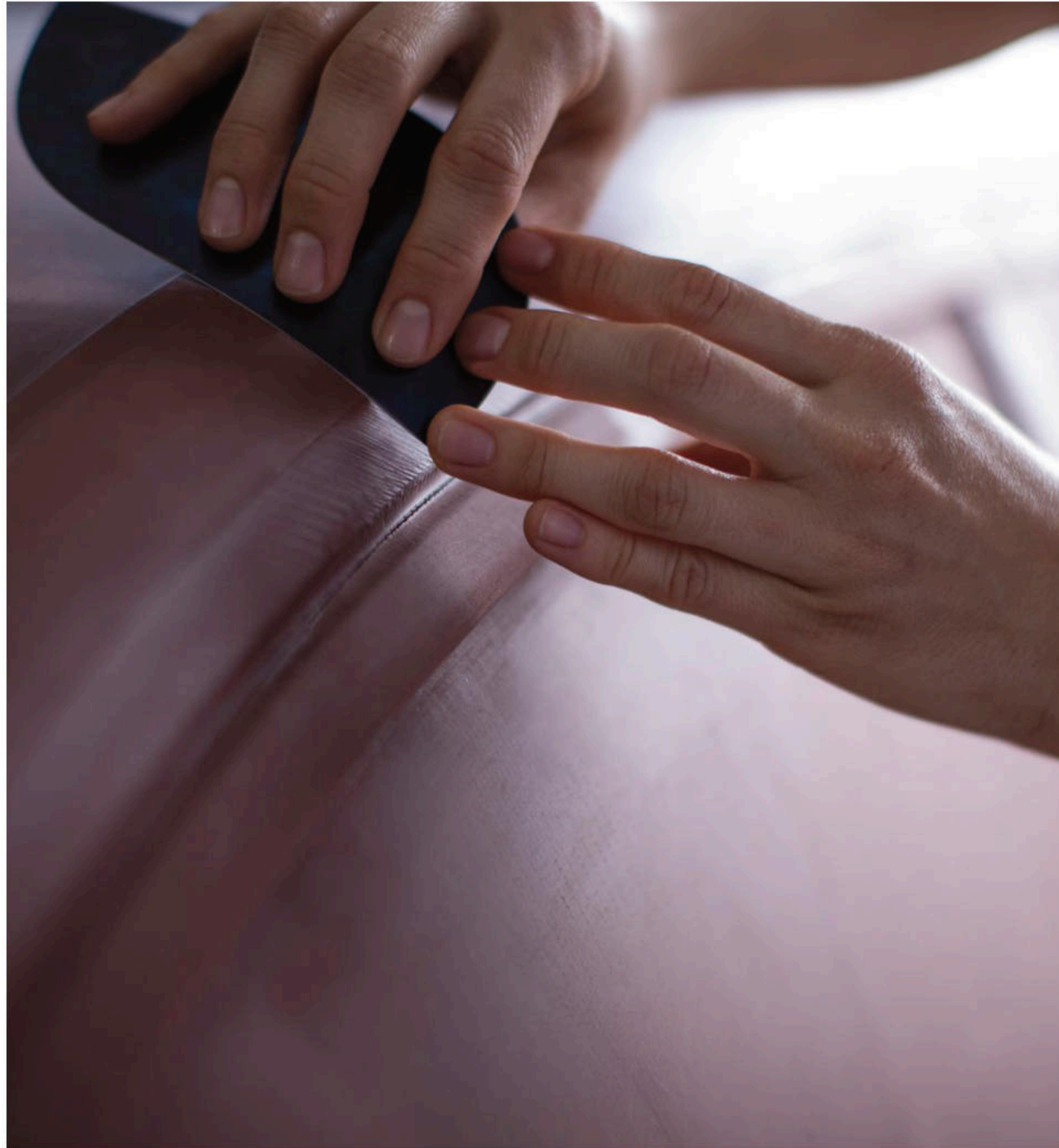
SOUND WORTHY OF THE VENUE

Like our performance features, Bose® premium sound systems are the professional's choice and come standard on both models. Available on ATS-V and standard on CTS-V, both offer Bose Centerpoint® surround technology and Active Noise Cancellation technology.

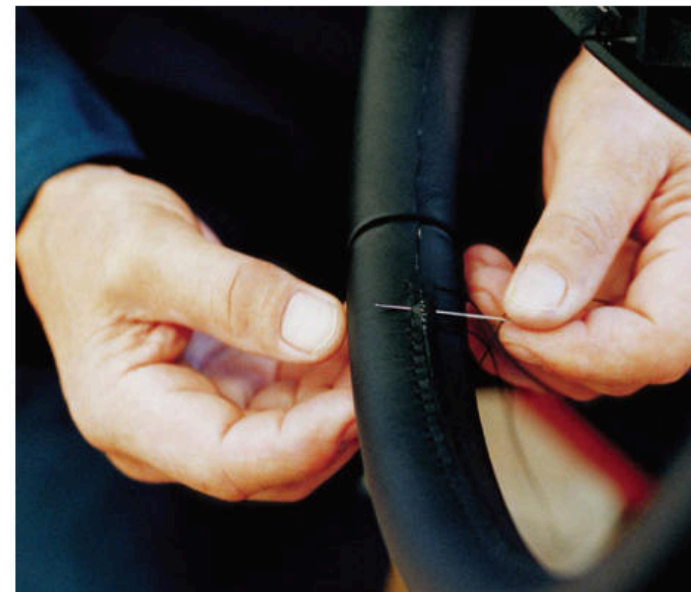


ATS-V Coupe Jet Black interior. Shown with available equipment.

*Curves
perfectly executed*



CRAFTSMANSHIP



VENEERS WITH DEPTH

Along with other options, the V-Series carbon fiber trim option is engineered for beauty and designed with a mirror-matched pattern to accentuate an advanced cockpit.

THE POWER OF STYLE

The tailored interior of every V-Series vehicle is refinement pushed tastefully further. Leather and trim options offer timeless style, along with subtle racing aesthetics. In every instance, these options are designed to work together beautifully.

SUPPLE, STRONG AND STRIKING

The Semi-Aniline leather seating surfaces and steering wheel available in the V-Series are created using a process that retains the natural beauty of the skins, while enhancing their strength and softness.



THE FUTURE IS
A RACE WITH
NO FINISH LINE

I N N O V A T I O N



The V-Series will take you many places—the future of driving surely being one. Sedan or Coupe, each is equipped with an array of technologies that don't just look ahead to what's next in comfort, convenience and connectivity, but quickly overtake that vision.



ATS-V interior shown with Apple CarPlay.

HIGH-PERFORMANCE CONNECTIVITY

Available OnStar 4G LTE and available built-in Wi-Fi® hotspot¹ allows you to connect up to seven devices at the same time, up to 50 feet away.

AS RESPONSIVE AS THE VEHICLE

The signature Cadillac CUE² system allows you to access communication and connectivity functions with smartphone-like ease. For safety and satisfaction, the brilliant 8" diagonal front screen responds to touch, voice and gestures.

EASY POWER

Wireless Charging³ lets you power up compatible phone and other mobile devices anytime the vehicle is running.

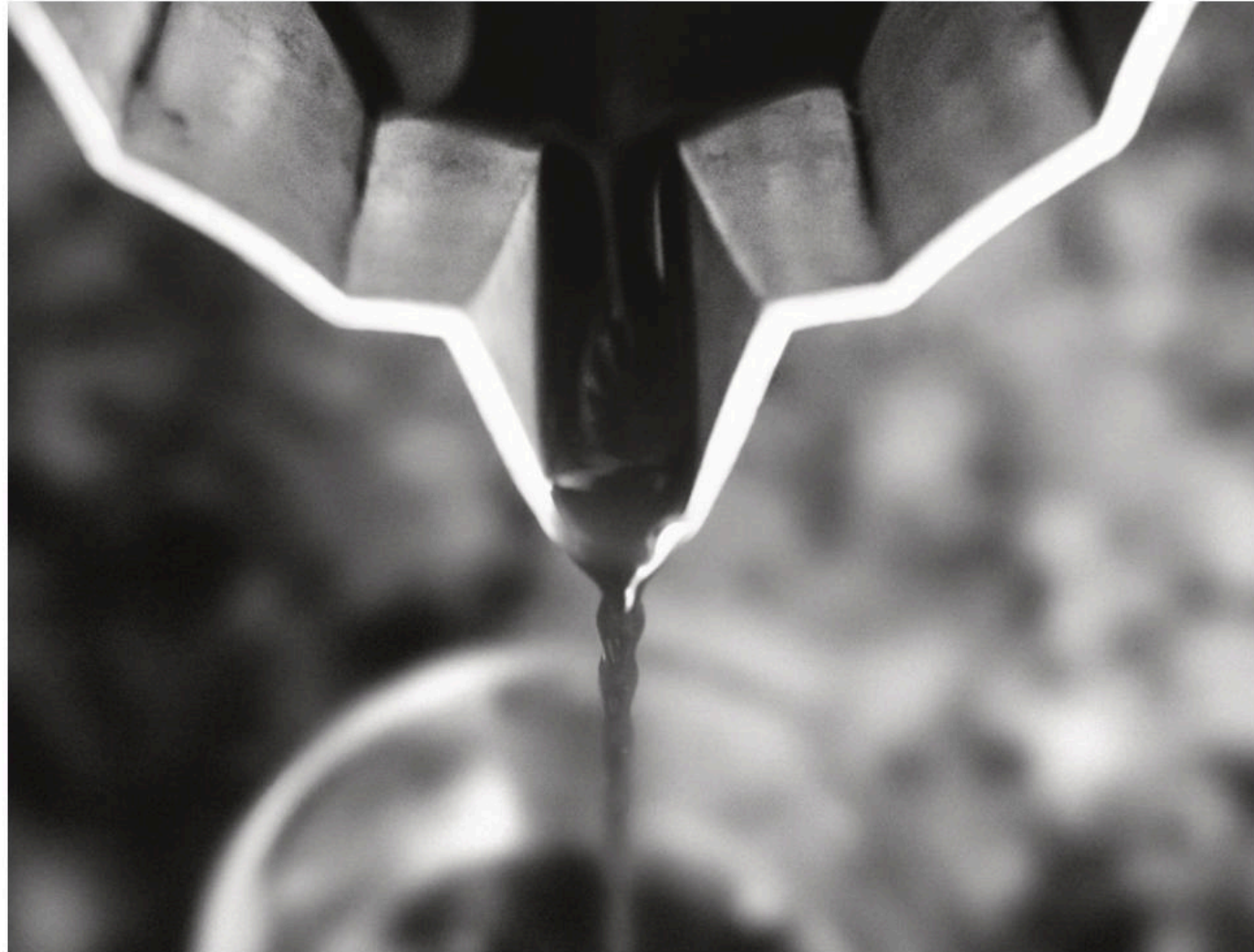
YOUR PHONE, EVEN SMARTER

Cadillac CUE Phone Integration with Apple CarPlay™ compatibility allows you to access your contacts, Apple Music™ and select information from your iPhone® with a touch of the screen, shown above. You can also access Siri®, so features are easily accessible to you or your front-seat passenger.

Phone Integration also provides Android™ Auto⁴ compatibility.

¹ Requires a compatible mobile device, active OnStar service and data plan. 4G LTE service available in select markets. Visit onstar.com for coverage map, details and system limitations. Data plans provided by AT&T. ² Cadillac CUE functionality varies by model. Full functionality requires compatible Bluetooth® and smartphone. Some devices require USB connectivity. ³ The system wirelessly charges one PMA- or Qi-compatible mobile device. To check for phone or other device compatibility, see mycadillac.com. ⁴ Vehicle user interfaces are products of Apple and Google and their terms and privacy statements apply. Requires compatible smartphone and data plan rates apply. CarPlay is a trademark of Apple Inc. Android and Android Auto are trademarks of Google, Inc.

*Rush hour
transformed
into a rush*





PARKING IS A PLEASURE

V-Series vehicles offer ultrasonic Front and Rear Park Assist systems that make pulling into and backing up easier.

In addition, CurbView Camera, standard on the CTS-V, helps protect the front splitter from damage from curbs and other low objects. Automatic Park Assist, also standard on the CTS-V, helps guide parallel and perpendicular parking maneuvers.

A BRILLIANT LOOK BACK

And when the desire of additional visibility conveniences arise, the Rear Camera Mirror, available on CTS-V only, streams HD video from a tailgate camera directly to the rearview mirror, offering a view (A) with substantially more vision than a traditional mirror (B).

TRULY FORWARD THINKING

Standard on CTS-V and available on ATS-V, Forward Collision Alert monitors traffic ahead, alerting you if a potential collision is imminent, while Following Distance Indicator shows the following time to the detected vehicle ahead (in seconds) in the Driver Information Center (DIC).

TRAVEL THE STRAIGHT AND SMART

Using monitors to sense lane boundaries, standard on CTS-V and available on ATS-V, Lane Keep Assist gently turns the steering wheel if the system anticipates the vehicle is leaving the lane unintentionally or without using your turn signal. Working in conjunction with the Safety Alert Seat, Lane Departure Warning sends a visual alert in the cluster and a warning pulse through the seat cushion.

BRIGHTER BACKING OUT

When backing out of a parking space, standard on CTS-V and available on ATS-V, Rear Cross Traffic Alert warns of oncoming traffic to either side of your vehicle.



I N N O V A T I O N



ALL CLEAR

Standard on CTS-V and available on ATS-V, Side Blind Zone Alert helps monitor your blind spots, so if a vehicle is in the adjacent lane, and you've activated your turn signal, an icon on the side mirror illuminates to alert you. Lane Change Alert surveys the area well beyond the side blind zone, and flashes the side mirror warning icon to alert you of a rapidly approaching vehicle.

LOOKING, SMART

Available on ATS-V and standard on CTS-V, Head-Up Display (HUD) projects driver-selected information such as speed, tachometer and navigation onto the front windshield, so drivers don't have to look away from the road or track.

POWER CONTROLLED IS POWER ENJOYED

Four available driver-selectable modes—Tour, Sport, Track and Snow/Ice—adjust steering, transmission, Magnetic Ride Control and other calibrations for the best possible ride.

INNOVATION YOU CAN SEE

Available IntelliBeam headlamps automatically turn high beams on or off, according to outside conditions. The system also disengages high beams when approaching headlamps or taillamps are within range.

GRABS YOUR ATTENTION. SUBTLY.

Cadillac's patented Safety Alert Seat sends a discreet pulse to the left, right or both sides of the driver's seat, indicating the direction of the threat—left, right, front or rear.

AN INTELLIGENT WIPER

Standard on CTS-V and available on ATS-V, Rainsense Wipers automatically engage when rain is detected, adjusting their speed to the rain's intensity. Whenever wipers are activated, Auto-Dry brakes automatically positions the brake pads closer to the rotors to sweep away moisture and improve performance.

FIRMLY REASSURING

On the CTS-V, Automatic Safety Belt Tightening activates during emergency braking or sudden maneuvers. When conditions return to normal, they ease automatically.



2017 ATS-V Coupe and Sedan Features

DRIVETRAIN

Engine 3.6L V6 Twin Turbo Direct-Injection(DI) with 464 hp and 445 lb-ft of torque
Transmission 6-speed manual
Cooling System Extra capacity
Differential Electronic Limited-Slip (eLSD)
Exhaust Quad stainless steel outlets
Rear-Wheel Drive

CHASSIS AND SUSPENSION

Brake Linings Performance¹
Brakes Brembo® 6-piston front, 4-piston rear, 4-Wheel Disc antilock braking system (ABS), Auto-Dry function with Ferritic Nitrocarburized Rotors
Calipers Gray Brembo
Steering Power, rack-and-pinion
Suspension Special Ride and Handling, with Magnetic Ride Control
Tires Michelin® Pilot® Super Sport summer-only tires²

EXTERIOR

Door Handles Body-colored
Fascias Front and rear body-color
Glass Solar-Ray, light-tinted, solar absorbing windshield
Grille Performance
Lighting
 Projector halogen composite headlamps with Daytime Running Lamps, includes flash-to-pass and twilight sentinel
 LED taillamps
 LED Center High-Mounted Stop Lamp (CHMSL)
Mirrors Body-color, heated, power-adjustable, and driver-side auto-dimming, manual folding with integrated turn signal indicators
Moldings Side glass with gloss black, and body-color rocker panel
Tow Hooks
Wheels 18" premium painted aluminum³ (see inside back cover for more details)
Windshield Wipers Front intermittent

INTERIOR

Air Filtration System Automatic air circulation and filtering
Audio System
 8" diagonal full-color radio screen
 Bose® premium audio system and Active Noise Cancellation technology
SiriusXM Satellite Radio⁴ with three-month trial
Bluetooth⁵ Hands-Free Calling with voice-prompt recognition for Bluetooth-enabled cell phones
Cadillac CUE⁶ (Cadillac User Experience) Information and media control system with 8" diagonal full-color capacitive touchscreen, three USB ports,⁵ Natural Voice Recognition, and Phone Projection with Apple CarPlay™ and Android™ Auto⁷ compatibility
Climate Control Dual-zone automatic with individual settings for driver and front passenger
Coat Hooks Driver and passenger side rear
Compass Display
Cruise Control Electronic, with set and resume speed
Door Locks Power programmable with lockout protection, rear child security (ATS-V Sedan only)

Driver Information Center (DIC) 5.7" three-window configurable color display for vehicle information
Electronic Parking Brake
Floor Mats Carpeted front and rear
Front Center Console Floor with floor shifter, integrated armrest with integrated storage and two cupholders
Keyless Access Passive, with keyless entry to all doors and trunk; includes two transmitters
Keyless Ignition Push-Button Start
Lighting Ambient, front and rear reading lamps and cargo area lamp

Mirror Frameless automatic-dimming rearview
Memory Package Two driver position and exit position for power driver seat, outside mirrors and power steering column
OnStar Basic Plan⁸ For 5 years, including select myCadillac mobile app⁹ features, Advanced Diagnostics¹⁰ and Dealer Maintenance Notification
Rear, Fold-Down Center Armrest With 2 cupholders (ATS-V Sedan only)
Rear Vision Camera Includes guidelines indicating the vehicle's projected path when vehicle is put in reverse
Remote Keyless Entry
Retained Accessory Power Power windows, audio system and sunroof (when equipped) remain operational after ignition is switched off for 10 minutes or until a door is opened

Seating
 Front bucket 18-way, including power-adjustable back bolsters and 2-way lumbar and manual cushion length adjustment.
 Rear, 3 position with fold-down armrest and trunk access door (Sedan only)
 Seats, Rear, 2-position, with 60/40 split-folding seat-back (Coupe only)
 Heated, driver and front passenger
 Head restraints, 4-way adjustable front and 2-way adjustable outboard rear
Steering Wheel Leather-wrapped rim, Magnesium Paddle Shift Controls (with available 8-speed transmission) and integrated audio, voice and cruise controls.
Steering Column Power tilt and telescoping
Visors Driver and front passenger illuminating vanity mirrors
Windows Power, with express-up/down in front and express-down in rear (ATS-V Sedan only); includes rear passenger lockout
Wireless Charging¹¹

SAFETY AND SECURITY

Air Bags¹² Dual-stage driver and front passenger frontal, knee, front and rear side-impact, Passenger Sensing System (no rear side-impact air bags in ATS-V Coupe)
Child Seat Restraint System¹² Rear facing
Forward Collision Alert
LATCH (Lower Anchors and Top tethers for Children) For child safety seats
Park Assist Front and Rear
OnStar Guidance Plan¹³ For 1 year, including Automatic Crash Response, Stolen Vehicle Assistance, Roadside Assistance, Turn-by-Turn Navigation, Advanced Diagnostics¹⁰ and more (trial excludes Hands-Free Calling minutes)

OnStar 4G LTE and available Built-In Wi-Fi[®] **Hotspot**¹⁴ To connect to the internet at 4G LTE speeds, includes 3 month or 3 GB data trial (whichever comes first)
Safety Belts Lap and shoulder belts for all positions (rear outboard only in ATS-V Coupe), and pretensioners for driver and front passenger
StabiliTrak[®] Electronic Stability Control System
Theft-Deterrent System Alarm and engine immobilizer
Tire Inflation Kit
Tire Pressure Monitoring System

AVAILABLE FEATURES

Advanced Security Package (requires Driver Awareness Package and Luxury Package)
 Additional shielded theft-deterrent alarm system
 Locking fuel door
 Locking wheel lugs
 Vehicle inclination sensor
 Steering column lock
Cadillac CUE⁵ and **Navigation**¹⁵ Includes Cadillac CUE with Embedded Navigation, Bose Centerpoint[®] Surround Sound system and 110V power receptacle
Calipers Red Brembo, Dark Gold Brembo

Carbon Black Package
 Black chrome grille
 After Midnight Dark Finish wheels
 Carbon Fiber Package
 Black chrome rear fascia applique
 Low-gloss Carbon fiber trim
 Sueded steering wheel
 RECARO V-Series seats
Carbon Fiber Package Includes carbon fiber front splitter, hood vent, rear diffuser, composite (non-carbon) black rocker extensions and body-color rear spoiler
Driver Awareness Package
 IntelliBeam headlamps
 Lane Change Alert
 Lane Keep Assist with Lane Departure Warning
 Forward Collision Alert
 Rear Cross Traffic Alert
 Side Blind Zone Alert¹⁶
 Rainsense Wipers

Luxury Package Includes Cadillac CUE⁵ and Navigation,¹⁵ sport alloy pedals, Universal Home Remote and HID headlamps
Performance Data and Video Recorder
Protection Package Includes carpeted front and rear floor mats, tire inflation kit and tow hooks (requires Track Performance Package)
RECARO Performance Seats
Safety and Security Package Includes contents of Driver Awareness Package, Advanced Security Package, Forward Distance Indicator and Head-Up Display
Steering Wheel Sueded microfiber and includes sueded microfiber shifter
Sunroof Power, sliding and tilt
Track Performance Package

Includes Carbon Fiber Package, Performance data and video recorder, low mass battery
Transmission 8-speed automatic with Performance Algorithm Shifting and remote start
Wheels (see inside back cover for more details)
 18" polished finish aluminum²
 18" After Midnight dark finish aluminum²

2017 CTS-V Sedan Features

DRIVETRAIN

Engine 6.2L V8 Supercharged Direct-Injection (DI), Continuous Valuable Valve Tuning (CVVT), aluminum with 640 hp and 630 lb-ft of torque with Active Fuel Management
Transmission 8-speed automatic with performance algorithm shifting and Magnesium Paddle Shifters
Cooling System For engine oil, engine coolant, transmission, charge air cooling and rear differential
Rear-Wheel Drive

CHASSIS AND SUSPENSION

Brake Linings Performance¹
Brakes Brembo 6-piston front, 4-piston rear, 4-Wheel Disc antilock braking system (ABS), Auto-Dry function with Ferritic Nitrocarburized Rotors
Calipers Gray Brembo
Differential Electronic Limited-Slip (eLSD)
Performance Traction Management With Launch Control
Steering ZF premium, speed-sensitive, variable-effort power rack-and-pinion, electric system
Suspension Performance with Magnetic Ride Control
Tires Michelin® Pilot® Super Sport summer-only tires²
Traction Control All-speed, brake and engine controlled

EXTERIOR

Aerodynamics Front splitter, rocker panels and rear spoiler
Carbon Fiber Hood With air extractor
Daytime Running Lamps
Door Handles Illuminating
Exhaust Quad stainless steel outlets
Fuel Filler Door Remote locking
Glass Acoustic, laminated front doors
Grille V-Series
HID Headlamps With IntelliBeam Adaptive Forward Lighting and LED vertical light signatures
Mirrors Body-color, heated, power-adjustable, and driver-side auto-dimming, manual folding with integrated turn signal indicators
Recovery Hook Front
Solar-Absorbing Windshield
Spoiler Rear decklid integrated with LED Center High-Mounted Stop Lamp (CHMSL)
Taillamps LED illumination
Wheels 19" painted forged aluminum wheels³ (see inside back cover for more details)
Windshield Wipers Front intermittent with Rainsense

INTERIOR

Adaptive Remote Start Activates heated/ventilated seats (if equipped), climate control system and rear defroster
Air Filtration System Automatic air circulation and air quality
Armrest Center Front and rear with hidden storage
Audio Bose 13-speaker Centerpoint Surround Sound system and Active Noise Cancellation technology
Bluetooth⁴ Hands-free calling and data-service streaming with natural voice recognition
Cadillac CUE⁵ and **Navigation**¹⁵ Information and media control system with embedded navigation,¹² 8" diagonal full-color LCD capacitive multi-touch screen, three USB ports,⁵ auxiliary input jack, Natural Voice Recognition and phone integration for Apple CarPlay⁷ and Android Auto capability⁸

Cargo Convenience Net Trunk
Climate Control Dual-zone automatic electronic with individual settings for driver and front passenger
Console Center Front with integrated shifter, armrest, and covered storage
Console Overhead Includes reading lamps; also includes universal home remote, UltraView Sunroof (if equipped) and power rear-window sunshade controls (if equipped)
Cruise Control Electronic, with set and resume speed
Cup Holders 2 in front console, 2 in rear amrest
Door Locks Power programmable with lockout protection
Electronic Parking Brake
Floor Mats Carpeted front and rear
Gauge Cluster 12.3" high-definition full-color reconfigurable with V-specific layout
Glove Box Electronic push-button opening, lockable
HD Radio
Headliner Sueded microfiber
Keyless Access EZ Key full Keyless Access offers keyless entry to all doors and trunk
Keyless Ignition With Push-Button Start
Lighting For glove box, front cupholders, overhead console, front and rear passenger footwell, map pockets, rear assist handles and cargo area, and LED accent on instrument panel and door
Memory Package Two presets for driver's seat position and outside mirrors, and vehicle exit preset function

Mirror Frameless automatic-dimming rearview
OnStar Basic Plan⁸ For 5 years, including select myCadillac mobile app⁹ features, Advanced Diagnostics¹⁰ and Dealer Maintenance Notification
Pedals Sport alloy
Power Outlets Two auxiliary
Rear Window Defroster
Retained Accessory Power Power windows, audio system and sunroof (if equipped) remain operational after ignition is switched off for 10 minutes or until driver's door is opened
Seating

5-Passenger
 Front bucket
 Rear, fixed seatback includes fold-down center armrest, and lockable rear pass-through access door
 Heated, driver and front passenger
 Ventilated driver and front passenger seat cushion and seat back (not available with RECARO seats)
 Head restraints, 4-way manual adjustable front
 Seats, front bucket, 20-way performance driver and front passenger, includes power-adjustable seat back bolster and manual cushion length adjustment
 Semi-Aniline leather with sueded microfiber inserts and seatbacks
Sill Plates Illuminated front, V-badged
SiriusXM Satellite Radio⁴ With three-month trial
Steering Wheel Leather-wrapped rim, heated, with Paddle Shift
 Controls and Audio, Driver Information Center (DIC) and cruise controls
Steering Column Power-Adjustable Rake and Telescope

Universal Home Remote 3-channel
Visors Driver and front passenger illuminating vanity mirrors
Windows Power with front and rear express-up/down; includes rear passenger lockout
Wireless Charging¹¹ Inductive charging system for portable devices

SAFETY AND SECURITY

Air Bags¹² Driver and front-passenger frontal, front-seat thorax and pelvic, rear thorax for outboard seating positions, side-curtain, and driver and front-passenger knee and Passenger Sensing System
Automatic Park Assist Includes front, rear, parallel and perpendicular parking assist
Automatic Safety Belt Tightening
Child Seat Restraint System¹²
CurbView Camera
Forward Collision Alert
Forward Distance Indicator
Head-Up Display Full-color, configurable
Hill Start Assist
Lane Change Alert
Lane Keep Assist with Lane Departure Warning
OnStar Guidance Plan¹³ For 1 year, including Automatic Crash Response, Stolen Vehicle Assistance, Roadside Assistance, Turn-by-Turn Navigation, Advanced Diagnostics¹⁰ and more (trial excludes Hands-Free Calling minutes)

OnStar 4G LTE and available Built-In Wi-Fi[®] **Hotspot**¹⁴ To connect to the internet at 4G LTE speeds, includes 3 month or 3 GB data trial (whichever comes first)
Rear Cross Traffic Alert
Rear Vision Camera Includes guidelines indicating the vehicle's projected path when vehicle is put in reverse
Safety Belts Lap and shoulder belts for all positions with belt-to-seat mounting and pretensioners for driver and front passenger, rear outboard comfort guides
Side Blind Zone Alert¹⁶
StabiliTrak[®] Electronic Stability Control System
Theft-Deterrent Alarm System With vehicle immobilizer
Tire Inflation Kit
Tire Pressure Monitoring System

AVAILABLE FEATURES

Advanced Security Package (requires Luxury Package)
 Additional shielded theft-deterrent alarm system
 Locking wheel lugs
 Vehicle inclination tilt sensor
 Steering column lock
Calipers Red Brembo, Dark Gold Brembo
Carbon Black Package
 Black chrome grille
 After Midnight Dark Finish wheels
 Carbon Fiber Package
 Low-gloss Carbon fiber trim
 Sueded steering wheel
 V-Series Performance seats
 Available RECARO V-Series seats
Carbon Fiber Package Includes Carbon Fiber front splitter, hood vent, rear diffuser and spoiler
Luxury Package Includes Tri-Zone Climate Control, Rear Camera Mirror, rear split-folding seat with armrest, heated rear outboard seats, rear window power sunshade, rear side window manual sunshades and 110V power receptacle
Performance data and video recorder
RECARO Performance Seats Heated
Steering Wheel Sueded microfiber rim and shift knob
Sunroof UltraView, power (requires Luxury Package)
Wheels (see inside back cover for more details)
 19" polished forged aluminum with Midnight Silver painted pockets²
 19" After Midnight painted forged aluminum²

11. The system wirelessly charges one PMA- or Qi-compatible mobile device. To check for phone or other device compatibility, see my.cadillac.com. **12.** Always use safety belts and child restraints. Children are safer when properly secured in a rear seat in the appropriate child restraint. See the Owner's Manual for more information. **13.** Visit onstar.com for coverage map, details and system limitations. OnStar acts as a link to existing emergency service providers. **14.** Requires a compatible mobile device. active OnStar service and data plan. 4G LTE service available in select markets. Visit onstar.com for coverage map, details and system limitations. Data plans provided by AT&T. **15.** Map coverage available in the United States, U.S. Virgin Islands, Puerto Rico and Canada. **16.** Before making a lane change, always check the Side Blind Zone Alert display, check the exterior and interior rearview mirrors, look over your shoulder for vehicles and hazards and start the turn signal.

1. Vehicles equipped with these linings will experience faster accumulation of brake dust on wheel surfaces and may produce more noise than with standard linings. **2.** Do not use summer-only tires in winter conditions, as it would adversely affect vehicle safety, performance and durability. Use only GM-approved tire and wheel combinations. Unapproved combinations may change the vehicle's performance characteristics. For important tire and wheel information, go to <https://mycadillac.com/learnAbout/cadillactires/> or see your dealer. **3.** If you subscribe after your trial period, *subscriptions are continuous until you call SiriusXM to cancel.* See SiriusXM Customer Agreement for complete terms at www.siriusxm.com. Other fees and taxes will apply. All fees and programming subject to change. **4.** Go to my.cadillac.com to find out which phones are compatible with the vehicle. **5.** Cadillac CUE functionality varies by model. Full functionality requires compatible Bluetooth and smartphone. Some devices require USB connectivity. **6.** Not compatible with all devices. **7.** Vehicle user interfaces are products of Apple and Google and their terms and privacy statements apply. Requires compatible smartphone and data plan rates apply. CarPlay is a trademark of Apple Inc. Android, Android Auto are trademarks of Google, Inc. **8.** Does not include emergency or security services. Visit onstar.com for coverage map, details and system limitations. **9.** Requires data plan, compatible vehicle and compatible device. Some features require factory-installed remote start, power locks, Tire Pressure Monitoring System or active OnStar service. **10.** Capabilities vary by model. Visit onstar.com for details and system limitations. Message and data rates may apply. Requires active OnStar service, email address on file and enrollment in Advanced Diagnostics.

Our owners deserve it all. That's why 2017 vehicles are backed by a comprehensive suite of owner benefits. To learn more, visit: cadillac.com/ownerbenefits

With available OnStar,¹ you can get immediate help, outsmart and avoid vehicle theft, reach destinations, stay connected, even manage your vehicle's health. To learn more, visit: cadillac.com/onstar

ABOUT THIS CATALOG

We have tried to make this catalog comprehensive and factual. We reserve the right, however, to make changes at any time, without notice, in prices, colors, materials, equipment, specifications, models and availability. Specifications, dimensions, measurements, ratings and other numbers in this catalog and other printed materials provided at the dealership or affixed to vehicles are approximates based upon design and engineering drawings and prototypes and laboratory tests. Your vehicle may differ due to variations in manufacture and equipment. Since some information may have been updated since the time of printing, please check with your Cadillac dealer for complete details. Any variations in colors shown are due to reproduction variation in the printing process. Cadillac reserves the right to lengthen or shorten the model year for any product for any reason, or start and end model years at different times. Note: Some photographs in this catalog show vehicles with optional equipment.

ENGINES

Cadillac products are equipped with engines produced by GM Powertrain or suppliers to GM worldwide. The engines in Cadillac products may also be used in other GM makes or models.

TIRE SEALANT AND COMPRESSOR KIT

If your vehicle has a tire sealant and compressor kit, it uses a liquid tire sealant to temporarily seal up to a ¼-inch puncture in the tread area of the tire. After using the inflator kit, it is recommended to take the tire to an authorized dealer for inspection and repair as soon as possible but at least within 100 miles of driving. The tire sealant cannot seal and inflate sidewall damage, punctures larger than ¼-inch or a tire that has unseated from the wheel. The sealant can only be used on one tire, one time before its expiration date.

ASSEMBLY

Cadillac vehicles and their components are assembled or produced by different operating units of General Motors, its subsidiaries or suppliers to GM worldwide. We sometimes find it necessary to produce Cadillac vehicles with different or differently sourced components than originally scheduled. Since some options may be unavailable when your vehicle is assembled, we suggest that you verify that your vehicle includes the equipment you ordered or, if there are changes, that they are acceptable to you.

UPDATED SERVICE INFORMATION

Cadillac dealers receive useful service bulletins about Cadillac products. You may purchase them from Helm Incorporated by calling 1-800-782-4356 or by visiting www.helminc.com.

NEW VEHICLE LIMITED WARRANTY

World-class coverage comes standard on every 2017 Cadillac. This warranty is for Cadillac vehicles registered in the U.S.A. See your Cadillac dealer for terms and conditions.

COVERED FOR 6 YEARS/70,000 MILES (WHICHEVER COMES FIRST)

Powertrain limited warranty with no deductible, Roadside Assistance Program² and Courtesy Transportation Program²

COVERED FOR 4 YEARS/50,000 MILES (WHICHEVER COMES FIRST)

Bumper-to-bumper coverage. Tires—defects in material and workmanship; repairs made to correct any vehicle defect; corrosion on body sheet metal panels.

RUST-THROUGH COVERAGE

Cadillac vehicles are designed and built to resist corrosion and rust-through corrosion. Any body sheet metal that rusts through (in the form of an actual hole in the sheet metal) is covered for six years and unlimited mileage. Cosmetic or surface corrosion—resulting from stone chips or scratches in the paint, for example—is not included in the rust-through coverage. Application of additional rust-inhibiting materials is not required under the rust-through coverage and none is recommended. See your Cadillac dealer for terms of this limited warranty.

FLEET ORDERS

Some standard content may be deleted with fleet orders. See dealer for details.

¹ Visit onstar.com for coverage map, details and system limitations. Services vary by model. OnStar acts as a link to existing emergency service providers. Not all vehicles may transmit all crash data. Available Wi-Fi requires compatible mobile device, active OnStar service and data plan. Data plans provided by AT&T. ² Roadside Assistance Program and Courtesy Transportation Program are not part of the New Vehicle Limited Warranty. A separate booklet titled, "Warranty and Owner Assistance Information" furnished with each new vehicle provides detailed warranty coverage information. ³ Do not use summer-only tires in winter conditions, as it would adversely affect vehicle safety, performance and durability. Use only GM-approved tire and wheel combinations. Unapproved combinations may change the vehicle's performance characteristics. For important tire and wheel information, go to <https://my.cadillac.com/learnAbout/cadillactires/> or see your dealer.

©2017 General Motors. All rights reserved. GM, the GM emblem, Cadillac, the Cadillac Crest, OnStar, the OnStar emblem and the slogans, emblems, vehicle model names, vehicle body designs and other marks appearing in this catalog are the trademarks and/or service marks of General Motors, its subsidiaries, affiliates or licensors. Apple, iPhone and Apple CarPlay are trademarks of Apple Inc., registered in the U.S. and other countries. Android is a trademark of Google, Inc. BlackBerry is a registered trademark of BlackBerry. Brembo is a registered trademark of Brembo. Bose and Centerpoint are registered trademarks of Bose Corporation in the U.S. and other countries. Michelin is a trademark of Michelin North America, Inc. Recaro is a trademark of Recaro North America, Inc. Windows is a registered trademark of Microsoft, Inc. Pandora is a registered trademark of Pandora Media, Inc. SiriusXM Satellite Radio is a registered trademark of SiriusXM Radio Inc. Blu-ray is a trademark of Blu-ray Disc Association. Wi-Fi is a registered trademark of Wi-Fi Alliance®.

WHEELS AND VEHICLE DIMENSIONS

ATS-V



18" PREMIUM PAINTED FORGED ALUMINUM

Standard on ATS-V
Size: 18" x 9" front, 18" x 9.5" rear³ with P255/35ZR18 front and P275/35ZR18 rear performance, summer-only³ tires



18" POLISHED FORGED ALUMINUM

Available on ATS-V
Size: 18" x 9" front, 18" x 9.5" rear³ with P255/35ZR18 front and P275/35ZR18 rear performance, summer-only³ tires



18" AFTER MIDNIGHT FORGED ALUMINUM

Available on ATS-V
Included with Carbon Black Package
Size: 18" x 9" front, 18" x 9.5" rear³ with P255/35ZR18 front and P275/35ZR18 rear performance, summer-only³ tires

SELECT ATS-V DIMENSIONS All measurements in inches.

EXTERIOR	COUPE	SEDAN	INTERIOR	COUPE	SEDAN	SELECT ATS-V CAPACITIES	COUPE	SEDAN
Wheelbase	109.3	109.3	Head Room, Front	37.6	38.6	Fuel (gal., approx.)	16.0	16.0
Overall Length	184.7	184.0	Head Room, Rear	35.1	35.1	Cargo Volume, Seat Up (cu. ft.)	10.4	10.4
Body Width	72.5	71.3	Shoulder Room, Front	54.1	54.1	Seating Capacity	2+2	5
Overall Height	54.5	55.7	Shoulder Room, Rear	51.1	51.1			
Front Track Width	60.5	60.5	Hip Room, Front	54.1	54.1			
Rear Track Width	61.4	60.4	Hip Room, Rear	44.5	44.5			
			Leg Room, Front	42.3	42.3			
			Leg Room, Rear	33.5	33.5			

CTS-V



19" PREMIUM PAINTED FORGED ALUMINUM

Standard on CTS-V
Size: 19" x 9.5" front, 19" x 10" rear³ with P265/35R19 front and P295/30ZR19 rear performance, summer-only³ tires



19" POLISHED FORGED ALUMINUM WITH MIDNIGHT SILVER PAINTED POCKETS

Available on CTS-V
Size: 19" x 9.5" front, 19" x 10" rear³ with P265/35R19 front and P295/30ZR19 rear performance, summer-only³ tires



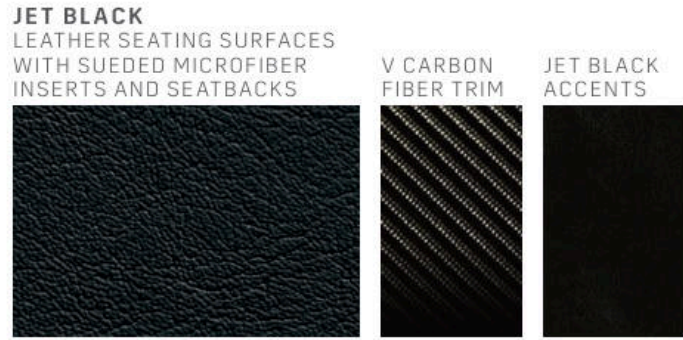
19" AFTER MIDNIGHT PREMIUM PAINTED FORGED ALUMINUM

Available on CTS-V
Included with Carbon Black Package
Size: 19" x 9.5" front, 19" x 10" rear³ with P265/35R19 front and P295/30ZR19 rear performance, summer-only³ tires

SELECT CTS-V DIMENSIONS All measurements in inches.

EXTERIOR		INTERIOR		SELECT CTS-V CAPACITIES	
Wheelbase	114.6	Head Room, Front	40.4	Fuel (gal., approx.)	19.0
Overall Length	197.6	Head Room, Rear	37.5	Cargo Volume, (cu. ft.)	13.7
Body Width	72.2	Shoulder Room, Front	56.9	Seating Capacity	5
Overall Height	57.2	Shoulder Room, Rear	54.8		
Front Track Width	62.1	Hip Room, Front	53.8		
Rear Track Width	61.2	Hip Room, Rear	53.3		
		Leg Room, Front	45.7		
		Leg Room, Rear	35.4		

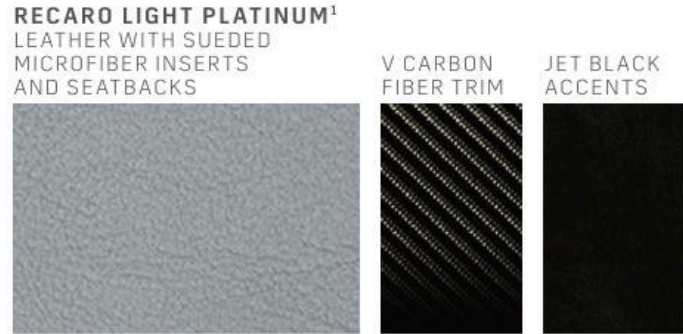
INTERIOR COMBINATIONS



ATX-V ONLY



AVAILABLE ON CTS-V AND ATX-V



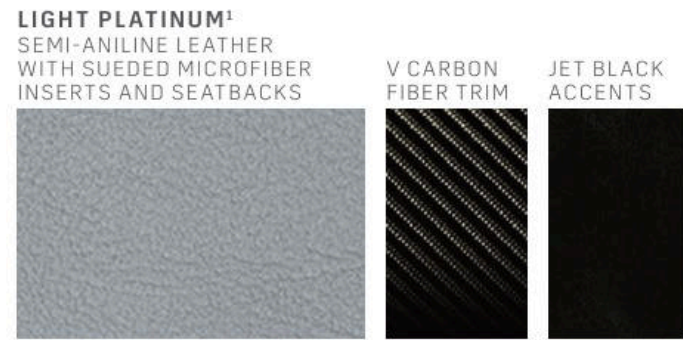
AVAILABLE ON CTS-V AND ATX-V



AVAILABLE ON CTS-V AND ATX-V



CTS-V ONLY



CTS-V ONLY



CTS-V ONLY

EXTERIOR COLORS



