

THE 2020
XT4

A CLOSER LOOK



Cadillac



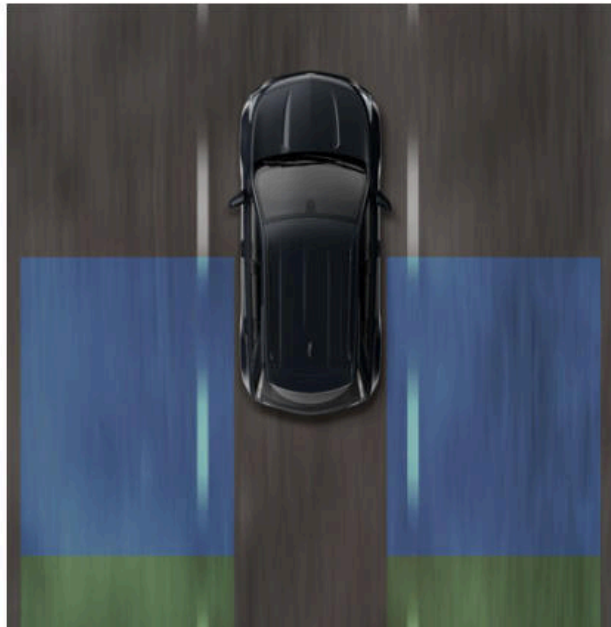
DESIGNED TO HELP YOU WITH THE UNEXPECTED

With standout styling and safety features such as Automatic Emergency Braking,¹ Forward Collision Alert¹ and Safety Alert Seat,¹ this Cadillac crossover is truly a thing of beauty.



AN ATTENTION GRABBER

Standard on both the Premium Luxury and Sport trims, Lane Change Alert with Side Blind Zone Alert¹ can provide side-mirror alerts when a moving vehicle is detected in or rapidly approaching your side blind zone.



GRABS YOUR ATTENTION. SUBTLY.

Cadillac's patented Safety Alert Seat¹ sends a discreet pulse to the left, right or both sides of the driver seat, indicating the direction of the potential danger.



CAN HELP YOU WHEN IT MATTERS

Automatic emergency braking systems can help alert you to potential collisions with vehicles you are following and help reduce the collision's severity by automatically applying emergency braking, if you haven't already done so by enhancing driver hard braking.



¹Safety or driver assistance features are no substitute for the driver's responsibility to operate the vehicle in a safe manner. The driver should remain attentive to traffic, surroundings and road conditions at all times. Visibility, weather, and road conditions may affect feature performance. Read the vehicle's [Owner's Manual](#) for more important feature limitations and information.



STANDARD SAFETY FEATURES

- AUTOMATIC EMERGENCY BRAKING¹
- FORWARD COLLISION ALERT¹
- REAR PARK ASSIST¹
- FRONT PEDESTRIAN BRAKING¹
- HD REAR VISION CAMERA¹
- SAFETY ALERT SEAT¹
- STABILITRAK TRACTION CONTROL
- EIGHT AIRBAGS²
- TEEN DRIVER
- REAR SEAT REMINDER

¹Read the vehicle's [Owner's Manual](#) for important feature limitations and information.

²Always use seat belts and child restraints. Children are safer when properly secured in a rear seat in the appropriate child restraint. See the [Owner's Manual](#) for more information.



SELECTED AVAILABLE SAFETY AND DRIVER ASSISTANCE FEATURES

- REVERSE AUTOMATIC BRAKING
- LANE CHANGE ALERT WITH SIDE BLIND ZONE ALERT
- REAR CROSS TRAFFIC ALERT
- LANE KEEP ASSIST WITH LANE DEPARTURE WARNING
- REAR PEDESTRIAN ALERT
- ENHANCED AUTOMATIC EMERGENCY BRAKING
- HD SURROUND VISION
- INTELLIBEAM
- REAR CAMERA MIRROR
- ADAPTIVE CRUISE CONTROL—ADVANCED
- FOLLOWING DISTANCE INDICATOR
- RAINSENSE™ FRONT WIPERS
- HEAD-UP DISPLAY

Read the vehicle's [Owner's Manual](#) for important feature limitations and information.

CONFIDENT BY DESIGN

The Cadillac XT4 is stunning enough to garner attention at a moment's notice, while putting all eyes on you. Stylize your Cadillac with Luxury, Premium Luxury or Sport exterior finishes. Each option offers unique appearances, giving your vehicle an identity of its own. The final touch is you.



SLICE THROUGH DESIGN

A bold design makes the headlamps bright and distinctive. The taillamps mirror the style of the headlamps, and slice through the air with a light-blade silhouette that's stylish and unmistakably Cadillac.



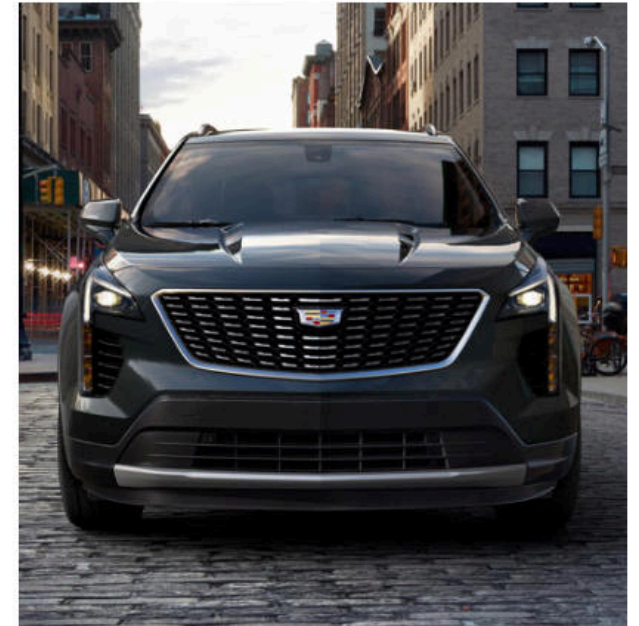
INSPIRED BY PERFORMANCE

The aggressively stylish Sport exterior finishes flash a gloss-black mesh grille framed by Galvano accents and gloss-black roof rails, window and front and rear lower fascia accents.



SOPHISTICATED AND MODERN

Chic and grand, the Premium Luxury exterior finishes are accentuated with a bright metallic-accented grille with Galvano surround, brushed aluminum roof rails and side-window moldings. Body-color illuminating door handles with satin-chrome accents add luster to complete the look.



STUNNING FROM THE INSIDE OUT

Your road. Your style. With authentic interior decor choices and a keen attention to every last detail, the XT4 is tailored to you. And it's a perfect fit.



ROOM FOR POSSIBILITY

The 60/40 folding rear seats can be folded flat to reveal up to 48.9 cubic feet of space.¹ This versatile space ensures that no cargo gets left behind.



¹With rear seats folded down, cargo and load capacity limited by weight and distribution.

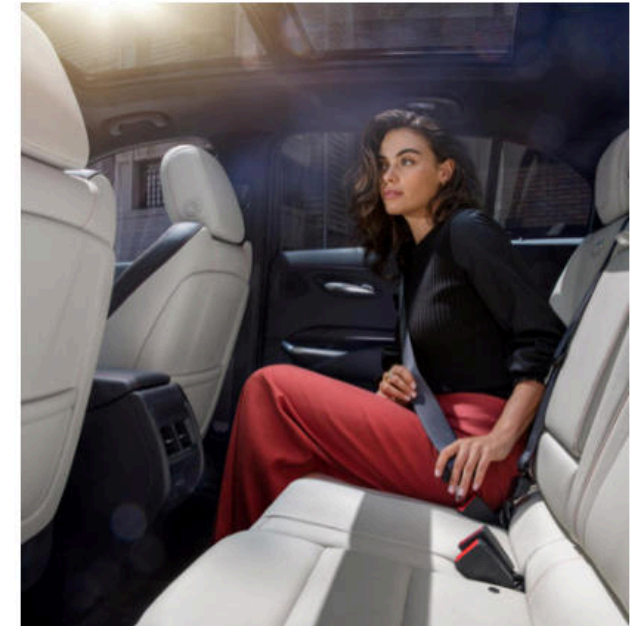
SIT BACK AND RELAX

The luxurious interior features available massaging front seats with available heat and ventilation for a more comfortable and relaxing drive.



FIRST-CLASS COMFORT FOR ALL

A thoughtfully designed interior provides segment-leading second-row leg room for backseat passengers.



POWER THAT PERFORMS

The 2.0L turbocharged engine produces 237 hp and 258 lb-ft of torque. It will feel like liftoff as soon as your foot touches the pedal. Engineered with Active Fuel Management, this technology automatically applies cylinder deactivation to not only make the drive exhilarating, but efficient as well.



9-SPEED, ELECTRONICALLY CONTROLLED

The 9-speed automatic transmission helps deliver immediate power and efficient performance at a moment's notice. Like right now.



SELECTABLE DRIVE MODES

With selectable drive modes such as Tour, Sport and Snow/Ice, the XT4 can adapt to the road as if it was born to be there. Because it was.



TURBOCHARGED ENGINE

With a restless 237 hp and 258 lb-ft of torque, the turbocharged engine brings the stampede. Giddy-up.



KEEP CONNECTED

The XT4 is smart in every way, with technology features that allow you, your world and your vehicle to be more connected than ever. So you can sit back and enjoy the drive.



INTUITIVE CONTROLS

With a tactile rotary controller and intuitive instrument panel controls, the world is in the palm of your hand. High-five to that.



¹Safety or driver assistance features are no substitute for the driver's responsibility to operate the vehicle in a safe manner. The driver should remain attentive to traffic, surroundings and road conditions at all times. Visibility, weather, and road conditions may affect feature performance. Read the vehicle's Owner's Manual for more important feature limitations and information.

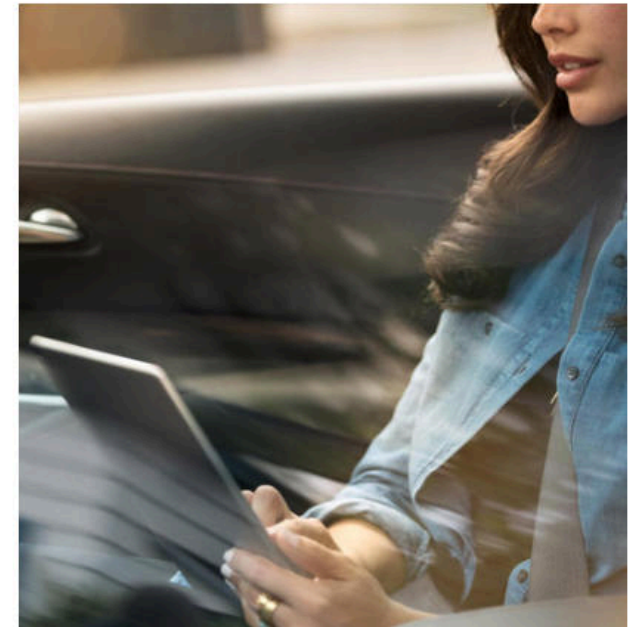
REAR CAMERA MIRROR

An innovative look back. Available on Premium Luxury and Sport models, the Rear Camera Mirror¹ allows you to use either a traditional rear view mirror or a rear view camera mirror display that provides a wider, less obstructed view.



DEVICE PAIRING

Easily pair your device to stay connected to your world. Connect up to two phones and/or tablets simultaneously with Bluetooth^{®2} to ensure an important call isn't missed.



²Visit <https://my.cadillac.com/how-to-support/entertainment-connections/bluetooth-smartphones-wifi/device-compatibility> to find out which phones are compatible with this vehicle.

SPECS

- **2.0L TURBO FOUR-CYLINDER ENGINE**
237 HP AND 258 LB-FT OF TORQUE
- **FRONT-WHEEL DRIVE**
24 MPG CITY - 30 MPG HIGHWAY - 26 MPG COMBINED¹
- **ALL-WHEEL DRIVE**
22 MPG CITY - 29 MPG HIGHWAY - 24 MPG COMBINED¹
- **CARGO VOLUME²**
22.5 CU. FT., REAR SEATBACKS UP
48.9 CU. FT., REAR SEATBACKS DOWN

¹EPA estimated

²Cargo and load capacity limited by weight and distribution.



TRIMS

LUXURY

Luxury features:



- Automatic Emergency Braking¹
- LED headlamps and taillamps
- Rear Park Assist¹
- Cadillac user experience² with Rotary Infotainment Controller
- Phone integration with Apple CarPlay^{TM3} and Android Auto^{TM4} compatibility

PREMIUM LUXURY

Includes Luxury features, plus:



- Front and Rear Park Assist¹
- Lane Change Alert with Side Blind Zone Alert¹
- Rear Cross Traffic Alert¹
- Hands-Free Power Liftgate
- Interior ambient lighting
- Driver-seat memory

SPORT

Includes Premium Luxury features, plus:



- 18" 10-spoke alloy wheels with Diamond-Cut/Argent Metallic finish
- Gloss Black finish on front grille, side window surround and roof rails
- Interior trim with Sport accents
- Carbon-fiber or genuine wood interior décor
- Sport steering wheel

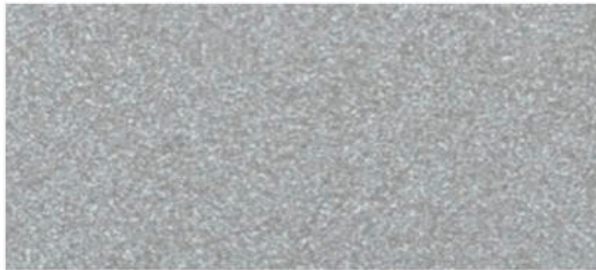
¹Read the vehicle's Owner's Manual for important feature limitations and information.

²Functionality varies by model. Full functionality requires compatible Bluetooth and smartphone, and USB connectivity for some devices.

³Vehicle user interface is a product of Apple and its terms and privacy statements apply. Requires compatible iPhone and data plan rates apply. Apple CarPlay is a trademark of Apple Inc. Siri, iPhone and iTunes are trademarks for Apple Inc. registered in the U.S. and other countries.

⁴Vehicle user interface is a product of Google and its terms and privacy statements apply. Requires the Android Auto app on Google Play and an Android compatible smartphone running Android^{TM 5.0} Lollipop or higher. Data plan rates apply. Android Auto is a trademark of Google LLC.

EXTERIOR COLORS



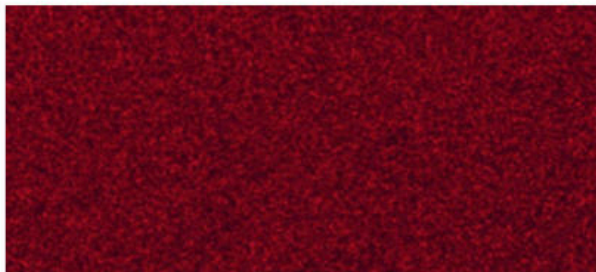
RADIANT SILVER METALLIC



STELLAR BLACK METALLIC¹



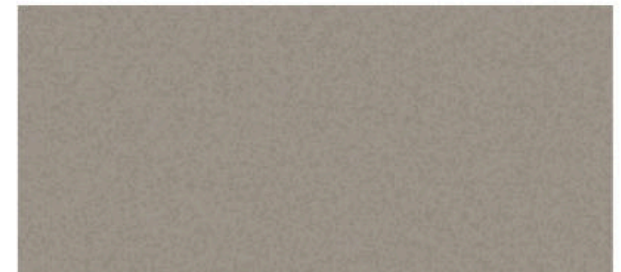
CRYSTAL WHITE TRICOAT¹



RED HORIZON TINTCOAT¹



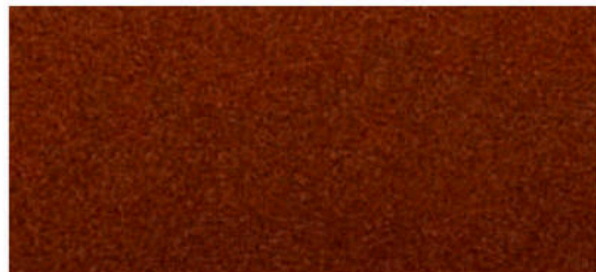
GARNET METALLIC¹



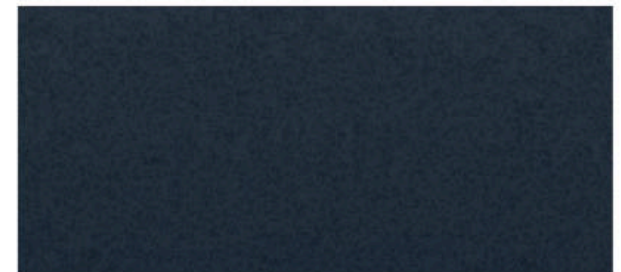
SILVER DUSK METALLIC^{1,2}



TWILIGHT BLUE METALLIC¹



AUTUMN METALLIC¹



SHADOW METALLIC¹

INTERIOR COLORS



LIGHT PLATINUM / JET BLACK

Leatherette Seating Surfaces

Available on Luxury.



JET BLACK

Leather Seating Surfaces

Available on Premium Luxury.



LIGHT PLATINUM / JET BLACK

Leather Seating Surfaces

Available on Premium Luxury.



JET BLACK¹

Leather Seating Surfaces with Mini-Perforated inserts

Available on Premium Luxury.



LIGHT PLATINUM / JET BLACK¹

Leather Seating Surfaces with Mini-Perforated inserts

Available on Premium Luxury.



SEDONA / JET BLACK¹

Leather Seating Surfaces with Mini-Perforated inserts

Available on Premium Luxury and Sport.

INTERIOR COLORS, CONTINUED



JET BLACK WITH CINNAMON ACCENTS

Leatherette Seating Surfaces

Available on Sport.



**LIGHT WHEAT / JET BLACK WITH
RED ACCENTS**

Leatherette Seating Surfaces

Available on Sport.



JET BLACK WITH CINNAMON ACCENTS¹

Leather Seating Surfaces with Mini-Perforated Inserts

Available on Sport.



**LIGHT WHEAT / JET BLACK WITH
RED ACCENTS¹**

Leather Seating Surfaces with Mini-Perforated Inserts

WHEELS



18" 10-Spoke alloy wheels
with Bright Silver finish

Standard on Luxury.



18" 10-Spoke alloy wheels
with Pearl Nickel finish

Standard on Premium Luxury.



18" 10-Spoke alloy wheels
with Diamond-Cut/Argent
Metallic finish

Standard on Sport.



20" Dynamic 9-Spoke alloy
wheels with Diamond-Cut/
Medium Android finish

Available on Premium Luxury.



20" Twin 5-Spoke alloy
wheels with Diamond-Cut/
Titan Satin finish

Available on Sport.



20" Split 7-Spoke alloy wheels
with Polished finish¹

Available on Luxury, Premium Luxury
and Sport. Dealer-installed accessory.



20" Split 7-Spoke alloy
wheels with After Midnight
Metallic finish¹

Available on Luxury, Premium Luxury
and Sport. Dealer-installed accessory.

¹Use only GM-approved tire and wheel combinations. See <https://accessories.cadillac.com/> for important wheel and tire information, or see your dealer.