

**CAMARO 2018**

**CHEVROLET**



Camaro LT Coupe in Hyper Blue Metallic (extra-cost color) with available RS Package and other available features.



Performance without pretense. Style sculpted to perfection. You're driving a legend.

**FIND NEW ROADS™**

**IT'S ALL ABOUT THE DRIVE.** At the heart of it, Camaro is sheer exhilaration. "It's without reservation that we voted the Camaro back onto the 10Best list for 2017," declares *Car and Driver*.

With its low, lean proportions and a stunning profile, Camaro has a presence that can be seen in every sculpted body panel and felt in every turn. The architecture is lightweight and ultra-strong, helping the tuned 4-wheel independent suspension to provide an incredible connection to the road.

This robust foundation enables a series of performance choices that range from a turbocharged 4-cylinder to a supercharged V8 ZL1 that is stunning the sports car world.



Left to right: Camaro 2LT Coupe in Nightfall Gray Metallic, Camaro 2LT Convertible in Hyper Blue Metallic (extra-cost color), Camaro 1LT Coupe in Red Hot, Camaro SS 1LE Coupe in Summit White and Camaro ZL1 Coupe in Black. Vehicles shown with available features.

<sup>1</sup> EPA estimated for Camaro LT with 2.0L 4-cylinder engine and 8-speed automatic transmission.

<sup>2</sup> Based on initial vehicle movement. Coupe models with available 8-speed automatic transmission.

**2.0L TURBO.** With 275 horsepower and 295 lb.-ft. of torque, this driving force delivers unexpected levels of performance and has an EPA-estimated 31 MPG on the highway!

**3.6L V6.** The V6-powered Camaro LT balances power with fuel-saving technology to offer 335 horsepower and 284 lb.-ft. of torque and has an EPA-estimated 29 MPG highway with the available 8-speed automatic.

**SS.** A 455-horsepower 6.2L LT1 V8 brings to life the most powerful Camaro SS to date. With 455 lb.-ft. of torque, 0 to 60 comes around in 4 seconds flat!<sup>2</sup> Available Magnetic Ride Control™ and a dual-mode exhaust system add to this astonishing blend of ride and response.

**ZL1.** The supercar Camaro. With a supercharged 650-horsepower V8 and track-tuned chassis, ZL1 is more than an American performance legend. With the newly available ZL1 1LE Extreme Track Package, it is the fastest, most capable Camaro ever.

**1LE.** Chevrolet developed the 1LE Package in 1988 to make Camaro more competitive in SCCA Showroom Stock road racing. Only a handful were built, but a legend was born. Today's 1LE Package is as accomplished on the street as it is focused on the track. Choose from V6 1LE, SS 1LE or ZL1 with the new ZL1 1LE Extreme Track Package.

CAMARO LT

**AN EPIC PERFORMANCE  
OF THE MODERN ERA.**



Camaro 2LT Coupe in Nightfall Gray Metallic with available RS Package and other available features.

Camaro LT blends exhilaration and innovation into one epic package. LT features include 18-inch aluminum wheels, LED daytime running lamps and halogen projector-beam headlamps. Add the RS Package for a Camaro that's even harder to resist.



**1. PHYSICAL PERFECTION.** This is Camaro – the pure driver’s car – in possibly its most spectacular form. The Camaro Convertible features modular underbody bracing to allow the same precise, nimble handling as the Coupe.

**2. SHOW-CAR SMOOTH.** The retracted top fluidly disappears under the fully automatic hard tonneau cover, maintaining the body’s crisp lines.

**3. SKY-HIGH TECH.** The top-up silhouette respects the iconic fastback image of the Coupe. But when it’s time to play, the fully electronic top lowers with the touch of the key fob or the single push of a button – even when driving up to 30 mph.



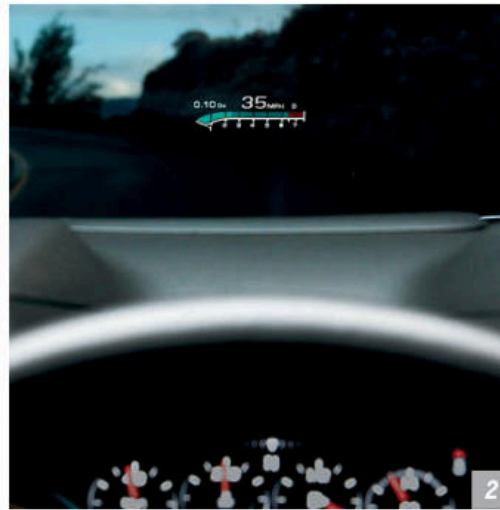
## INTERIOR DESIGN

Camaro 2LT interior in Jet Black with available Ceramic White Interior Accent Trim Package and other available features.

**PRECISE COMFORT IN EVERY ERGONOMIC DETAIL.** From a flat-bottom steering wheel and perfectly placed gear shifter to the aggressively bolstered seats, everything comes together seamlessly for the purpose of driving dynamics. Premium materials surround you, including available heated and ventilated leather-trimmed seating surfaces. Rotating dials provide quick, convenient climate control.



**LIGHT 'EM UP.** Interior spectrum lighting, standard on 2SS and ZL1 and available on 2LT, courses around the radio, door trim and cup holders, transitioning between 24 selectable colors. The color spectrum reacts to changes in drive modes, the lighting gives off an ambient nighttime glow, and there's even a pulsing light show mode you can select when parked.



**1. GO CONFIGURE.** An available 8-inch diagonal reconfigurable gauge cluster allows you to personalize the information you need and desire.

**2. TRACK YOUR G FORCE.** The available Head-Up Display projects onto the windshield color digital readouts for vehicle speed, selected gear, g force, tachometer, compass, outside temperature, turn-by-turn navigation<sup>1</sup> information and more.

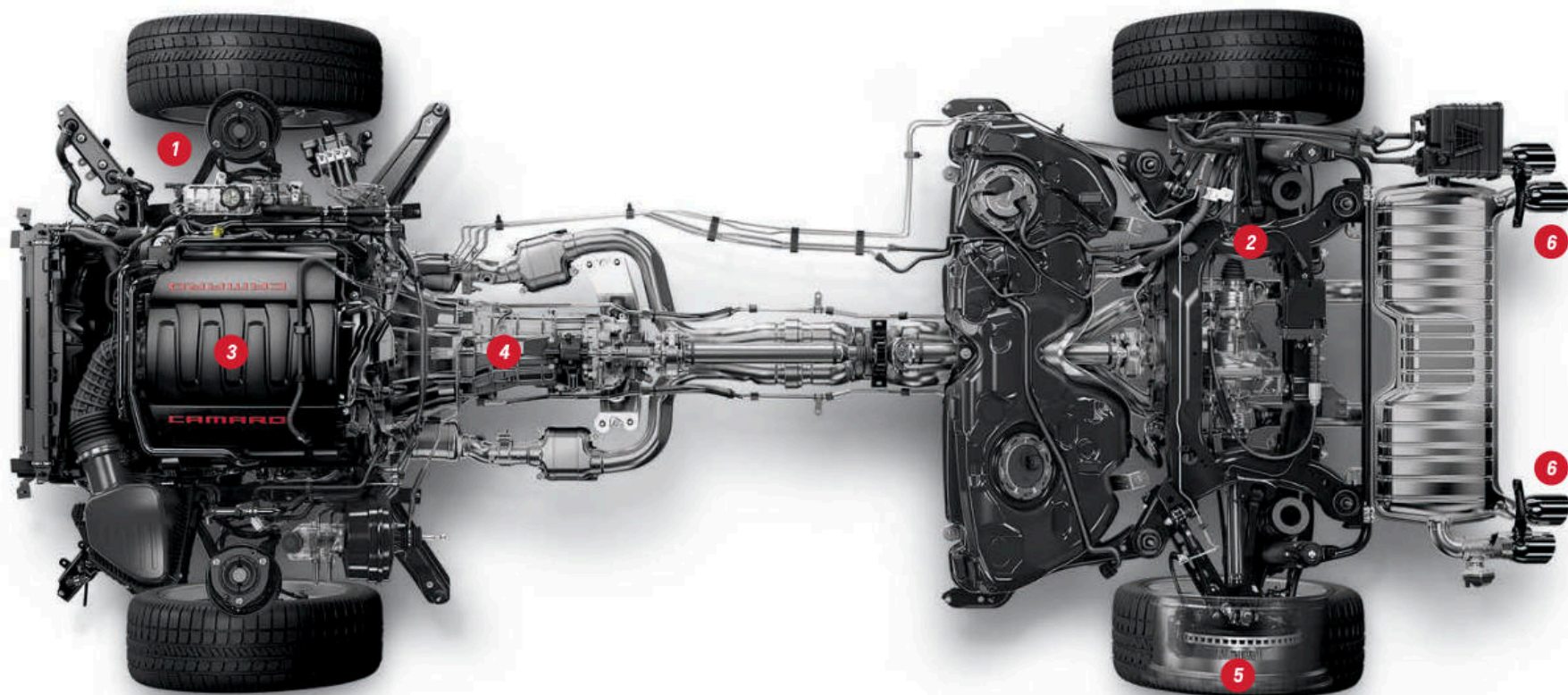
**3. GET CONNECTED.** The Chevrolet MyLink<sup>2</sup> Radio with an available customizable 8-inch diagonal color touch-screen includes Bluetooth<sup>®</sup> audio streaming<sup>3</sup> for select phones, plus support for Apple CarPlay<sup>™4</sup> and Android Auto<sup>™5</sup> for compatible phones.

**4. HUG A ROAD.** The advanced Driver Mode Selector tailors up to eight vehicle attributes using four selectable modes: Tour, Sport, Snow/Ice (excludes V6 1LE) and Track (Track mode is exclusive to Camaro SS and ZL1 and models with the available V6 1LE Performance Package).

<sup>1</sup> Map coverage available in the United States, Puerto Rico and Canada. <sup>2</sup> MyLink functionality varies by model. Full functionality requires compatible Bluetooth and smartphone, and USB connectivity for some devices. MyLink on Camaro does not include CD player. <sup>3</sup> Go to [my.chevrolet.com/learn](http://my.chevrolet.com/learn) to find out which phones are compatible with the vehicle. <sup>4</sup> Vehicle user interface is a product of Apple and its terms and privacy statements apply. Requires compatible iPhone and data plan rates apply. <sup>5</sup> Vehicle user interface is a product of Google and its terms and privacy statements apply. Requires the Android Auto app on Google Play and an Android compatible smartphone running Android 5.0 Lollipop or higher and data plan rates apply.

Apple CarPlay is a trademark of Apple Inc. iPhone is a trademark of Apple Inc., registered in the U.S. and other countries. Android Auto, Google, Google Play and other marks are trademarks of Google Inc.

## PERFORMANCE



**1 MULTILINK FRONT SUSPENSION.** Featuring aluminum components and MacPherson struts, this suspension is engineered for precision at every turn.

**2 INDEPENDENT REAR SUSPENSION.** Tuned specifically for each Camaro model, this advanced rear suspension provides both a refined ride and responsive driving dynamics.

**3 455-HP 6.2L V8 ENGINE.** Standard on SS, this engine features Direct Injection, Variable Valve Timing and Active Fuel Management™ (automatic transmissions only) for impressive efficiency.

**4 6-SPEED MANUAL TRANSMISSION.** Includes paddles to activate Active Rev Matching<sup>1</sup> for smooth shifts and enhanced performance capability.

**5 BREMBO® 4-WHEEL DISC BRAKES.** Track-tested 4-piston front and rear performance brakes are standard on Camaro SS, providing precise braking while helping to resist fade.

**6 DUAL-MODE EXHAUST.** Standard on ZL1 and available on all other models, the dual-mode exhaust changes sound with each of four driver-selectable modes.

<sup>1</sup> Requires V8 engine and 6-speed manual transmission.



**MODERN ARCHITECTURE.** Advanced techniques helped make this Camaro lighter by at least 200 lbs. versus the fifth gen. The 4-wheel independent suspension, designed with aluminum components, was engineered to be 21% leaner.

**CAN YOU HANDLE IT?** Electric Power Steering brings road feel and response to a higher plane. Up to four selectable driver modes offer distinct experiences. And the smaller, tighter proportions and quick steering ratios contribute to a nimble, controlled feeling with every turn of the wheel.

**CAMARO SS**

**SS.  
THE HEART AND SOUL  
OF CAMARO PERFORMANCE.**

**455-HP 6.2L LT1 V8.** The small block V8, a performance masterpiece delivering a massive 455 lb.-ft. of torque, is the driving force behind Camaro SS.

At left: Camaro SS Coupe in Hyper Blue Metallic (extra-cost color). At right: Camaro LT Coupe in Garnet Red Tintcoat (extra-cost color). Vehicles shown with available features.



Camaro 2SS Convertible in Garnet Red Tintcoat (extra-cost color) with available features.



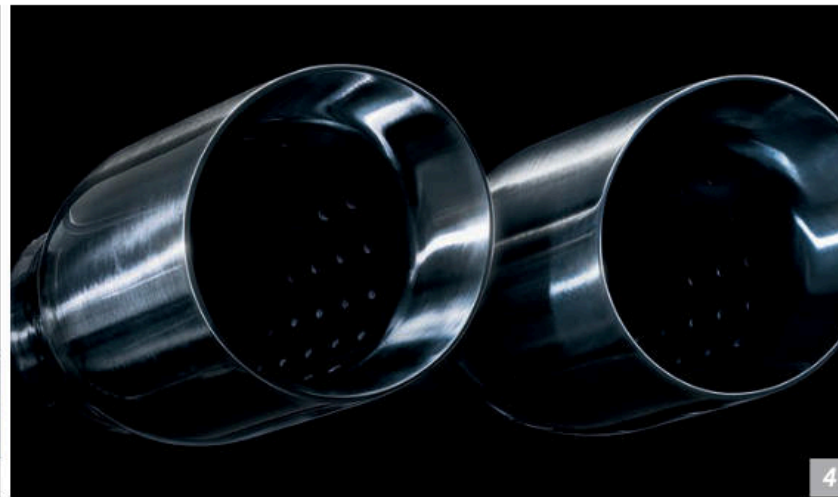
1



2



3



4

**1. 6-SPEED MANUAL TRANSMISSION.**

The manual shifter is wrapped with dimpled leather, a unique cap for SS and a grip that's ideal for every driver. Active Rev Matching<sup>1</sup> anticipates downshifts with throttle blips for smooth, precise shifting.

**2. BREMBO® BRAKES.** This high-performance 4-piston all-disc system is capable of taking Camaro SS Coupe from 60 mph to a complete stop in 117 feet.

**3. MAGNETIC RIDE CONTROL.**

The track-ready credentials of Camaro SS are further enhanced by available Magnetic Ride Control that stiffens the suspension for high-performance driving while helping to maintain a smooth ride.

**4. DUAL-MODE EXHAUST.** This available performance exhaust system lets you refine the roar of the 6.2L LT1 V8 engine within each of its four driving modes – Tour, Sport, Track and Snow/Ice.

<sup>1</sup> Requires V8 engine and 6-speed manual transmission.



WANT MORE INFO?  
GO TO [CHEVY.COM/CAMARO](http://CHEVY.COM/CAMARO)

CAMARO 1LE

Camaro SS Coupe in Black with available 1LE Performance Package and Chevrolet Accessories.

1LE.  
BADGE OF HONOR.



1 Do not use summer-only tires in winter conditions, as it would adversely affect vehicle safety, performance and durability. Use only GM-approved tire and wheel combinations. Unapproved combinations may change the vehicle's performance characteristics. For important tire and wheel information, go to [my.chevrolet.com/learnAbout/chevrolet tires](http://my.chevrolet.com/learnAbout/chevrolet tires) or see your dealer.

**1LE. CAMARO, ONLY MORE SO.**

More engineering. More aero. More downforce. More of everything that connects driver to asphalt. 1LE is the Camaro with that extra edge. Recognize 1LE by its Satin Black hood, front splitter and 3-piece rear blade spoiler.

**V6 1LE.** Offering track-capable performance, the Camaro V6 1LE is also a precisely balanced daily driver. FE3 suspension components from Camaro SS include dampers, rear cradle mounts, ball-jointed rear toe links and stabilizer bars. Lightweight 20-inch forged-aluminum wheels with run-flat summer-only tires<sup>1</sup> pair with Brembo®

4-piston front brake calipers, a limited-slip differential and a standard track cooling package. With its aggressive suspension tuning and a dual-mode exhaust, the 335-horsepower V6 1LE delivers an estimated 0.97 g in cornering grip for consistent lap-after-lap times on the track.

**SS 1LE.** A track-tuned chassis and suspension take the 455-horsepower SS to an even higher level. The FE4 chassis system includes Magnetic Ride Control dampers, special springs and stabilizer bars. With an Electronic Limited-Slip Differential, a dual-mode exhaust, Brembo 6-piston front brake calipers and Goodyear Eagle® F1 SuperCar® summer-only tires<sup>1</sup>, lateral acceleration exceeds 1 g.

CAMARO ZL1

## HAVE CAMARO ENGINEERS GONE TOO FAR?



At left: Camaro ZL1 Coupe in Red Hot with available features. At right: Camaro ZL1 Convertible in Arctic Blue Metallic with available features.

The 650-horsepower supercharged ZL1 is simply one of the most phenomenal executions of design, performance, aerodynamics and technology in Camaro history. Call this one a game changer.

“It’s quite likely that the ZL1 is the most rewarding means ever created to move leaves off a racetrack,” says *Car and Driver*. ZL1 with the available 10-speed automatic is the convergence of all the pride, passion, performance and technology

Chevrolet engineers put into Camaro. And the available Electronic Limited-Slip Differential, combined with Performance Traction Management, takes control and balance to an astounding level.

If you seek the ultimate mastery of all-around excellence straight from the showroom, take a close look at ZL1.

# 650

HORSEPOWER

SKID PAD

# 1.02 G

MAXIMUM LATERAL  
ACCELERATION (COUPE)

# 3.5 SECONDS<sup>1</sup>

0 TO 60 MPH (AUTOMATIC COUPE)

Camaro ZL1 Coupe in Red Hot  
with available features.



<sup>1</sup> Based on initial vehicle movement. Coupe models with available 10-speed automatic transmission. <sup>2</sup> Do not use summer-only tires in winter conditions, as it would adversely affect vehicle safety, performance and durability. Use only GM-approved tire and wheel combinations. Unapproved combinations may change the vehicle's performance characteristics. For important tire and wheel information, go to [my.chevrolet.com/learnAbout/chevrolettires](http://my.chevrolet.com/learnAbout/chevrolettires) or see your dealer.

#### **THE POWER BEHIND THE NUMBERS.**

The 650-horsepower supercharged LT4 V8 is backed by a 6-speed manual transmission featuring Active Rev Matching. Or choose the available 10-speed paddle-shift automatic that helps maintain optimum rpm levels for maximum responsiveness and quicker lap times.

#### **TESTED AND PERFECTED.**

A specially sculpted front fascia enhances airflow and works together with the carbon-fiber composite hood extractor to pull heat from the engine compartment and reduce lift. Large outboard cooling ducts push air to the brakes, while air splitters and a rear spoiler create downforce at higher speeds.

#### **EVERY DETAIL MATTERS.**

Standard 20-inch forged-aluminum wheels are wrapped in sticky Goodyear Eagle® F1 SuperCar® G:2 summer-only tires.<sup>2</sup> Large Brembo® 6-piston front and 4-piston rear brake calipers give ZL1 impressive stopping power.

#### **PUT A SPIN ON IT.**

Custom launch control keeps the rear tires spinning at the correct speed and allows you to adjust both your launch rpm and wheel slippage through the Driver Information Center. A line lock feature lets you lock the front wheels to enable the rear wheels to spin, warming tires for maximum grip at the drag strip.

ZL1 1LE

**IT'S ZL1 –  
AND THEN SOME.**



**THE MOST TRACK-CAPABLE CAMARO. EVER.** Could this be overkill? Well, the new 2018 Camaro ZL1 1LE has speed to burn. In preliminary testing, ZL1 1LE was 3 seconds faster around the General Motors Milford road course than Camaro ZL1. It's the ultimate track-day Camaro. It's not for everyone – but it just might be for you.

**PUSHING GRAVITY AROUND.** ZL1 1LE slips through the wind with a carbon-fiber rear wing, as well as specific air deflectors and new dive planes on the front fascia. The high wing helps generate approximately 300 pounds of downforce, enabling the car to drive faster and stay planted in the turns.

**ZL1 RULES THE RING.** Germany's Nürburgring 12.9-mile North Loop, or Nordschleife, is the world's benchmark for all-out performance testing. ZL1 1LE set a new class record there in April 2017.

Camaro ZL1 in Summit White with available 1LE Extreme Track Package.



1



2



3



4

**1** Automatic transmission only. **2** Available on ZLT Coupe with V6 1LE Performance Package and Convenience and Lighting Package. Available on SS with SS 1LE Performance Package. Available on ZL1 Coupe. **3** Driving on wet roads, in heavy rain, or through standing water with competition-oriented tires may cause hydroplaning and loss of control. Use extreme caution and drive slowly on wet roads. Do not use summer-only tires in winter conditions, as it would adversely affect vehicle safety, performance and durability. Use only GM-approved tire and wheel combinations. Unapproved combinations may change the vehicle's performance characteristics. For important tire and wheel information, go to [my.chevrolet.com/learnAbout/chevrolettires](http://my.chevrolet.com/learnAbout/chevrolettires) or see your dealer.

### **1. THE PINNACLE OF CAMARO POWER.**

With its 650-horsepower supercharged V8, ZL1 (and ZL1 1LE) is the most powerful Camaro ever. Advanced technologies include titanium intake valves for reduced mass. Direct Injection, available Active Fuel Management<sup>1</sup> and Variable Valve Timing contribute to this super-tuned performance package.

**2. RECORD YOUR RIDES.** The available Performance Data Recorder<sup>2</sup> logs videos of your driver sessions, along with real-time performance data, onto an SD memory card so you can analyze your technique and help improve your driving abilities.

### **3. THE PERFORMANCE? GRIPPING.**

Brembo<sup>®</sup> 6-piston front and 4-piston rear brakes give ZL1 1LE track-ready capability. New, lightweight forged-aluminum wheels are an inch wider, front and rear, than standard ZL1 wheels and are paired with the exclusive Goodyear Eagle<sup>®</sup> F1 SuperCar<sup>®</sup> 3R summer-only tires<sup>3</sup>

**4. QUICK-CHANGE ARTIST.** ZL1 1LE suspension components are designed for quick changes at the track for optimal performance – and a quick return to street settings when the track day ends. These include racing-derived, lightweight Multimatic DSSV<sup>™</sup> dampers for exceptional control. Front ride height, camber plates and stabilizer bars are adjustable.

## SPECIAL FEATURES

**1. CUSTOMIZE IT.** For 2018, Chevrolet offers a range of accessories and custom features designed to give your Camaro just the look you've been searching for. Select from a variety of exterior accent colors to give the sixth-generation Camaro even more of a performance edge. Custom grilles, an aero-shaped front splitter and a high-wing rear spoiler are among the accessories you can add.

**2. ACCESSORIZE IT.** From a color-coordinated engine cover (shown) to a tuned performance exhaust, it's easy to accessorize your ride. Go to [chevroletaccessories.com](http://chevroletaccessories.com) for the full story.

**3. VISUALIZE IT.** At [thecamarosix.com](http://thecamarosix.com), you can check out accessories to personalize your ride. Then prepare to encounter the Camaro you brought to life.





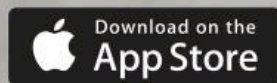
**BRING CAMARO SIX TO LIFE.**

Our app invites you to download and experience the 2018 Camaro right on your smartphone or tablet. You can also explore trim levels, colors and wheels, and take a 360-degree spin around the interior.

**SHARE YOUR EXPERIENCE.**

Now that you've built a legend, check out the specs of your freshly built Camaro. Then save your design for later or share it online with your friends.

**DOWNLOAD THE  
CAMARO SIX APP**



## REDLINE EDITION



**A CUSTOMIZED CAMARO RIGHT FROM THE FACTORY.** Redline Edition is the standout special inspired by Camaro auto show concepts. Design elements include a blackout grille and Chevrolet bowtie emblems, Black wheels with Red accents and Black hash marks over the front wheels.



## WHEELS



Silver-Painted Aluminum  
18" x 8.5" Front and Rear on LS or LT



5-Spoke Bright Silver-Painted Aluminum  
paired with summer-only tires<sup>1</sup>  
20" x 8.5" front and 20" x 9.5" rear on SS



5-Spoke Low-Gloss Black Aluminum  
20" x 8.5" Front and 20" x 9.5" Rear on SS  
20" x 8.5" Front and Rear on LS or LT  
SS wheels paired with summer-only tires<sup>1</sup>



5-Split-Spoke Bright Silver-Painted Aluminum  
20" x 8.5" Front and 20" x 9.5" Rear on SS  
20" x 8.5" Front and Rear on LS or LT<sup>2</sup>  
SS wheels paired with summer-only tires<sup>1</sup>



5-Split-Spoke Premium Gray-Painted  
Machined-Face Aluminum  
20" x 8.5" Front and 20" x 9.5" Rear on SS  
20" x 8.5" Front and Rear on LS or LT<sup>2</sup>  
SS wheels paired with summer-only tires<sup>1</sup>



Black-Painted Aluminum with Red Accents<sup>3</sup>  
20" x 8.5" Front and 20" x 9.5" Rear on SS  
20" x 8.5" Front and Rear on LS or LT  
SS wheels paired with summer-only tires<sup>1</sup>



10-Split-Spoke Dark Graphite-Painted Forged-Aluminum  
paired with summer-only tires<sup>1</sup>  
20" x 10" Front and 20" x 11" Rear on ZL1



5-Split-Spoke Black-Painted Forged-Aluminum<sup>4</sup>  
paired with summer-only tires<sup>1</sup>  
20" x 8.5" Front and 20" x 9.5" Rear on LS or LT with 1LE



5-Split-Spoke Satin Graphite Forged-Aluminum<sup>4</sup>  
paired with summer-only tires<sup>1</sup>  
20" x 10" Front and 20" x 11" Rear on SS with 1LE



5-Split-Spoke Low-Gloss Black-Painted  
Forged-Aluminum<sup>5</sup> paired with summer-only tires<sup>1</sup>  
19" x 11" Front and 19" x 12" Rear on ZL1 with 1LE

<sup>1</sup> Do not use summer-only tires in winter conditions, as it would adversely affect vehicle safety, performance and durability. Use only GM-approved tire and wheel combinations. Unapproved combinations may change the vehicle's performance characteristics. For important tire and wheel information, go to [my.chevrolet.com/learnAbout/chevrolettires](http://my.chevrolet.com/learnAbout/chevrolettires) or see your dealer. <sup>2</sup> Requires available RS Package. <sup>3</sup> Requires available Redline Edition. <sup>4</sup> Requires available 1LE Performance Package. <sup>5</sup> Requires available ZL11LE Extreme Track Package.

## COLORS



SUMMIT WHITE



SILVER ICE METALLIC



NIGHTFALL GRAY METALLIC



BRIGHT YELLOW<sup>1</sup>



RED HOT



GARNET RED TINTCOAT<sup>1</sup>



ARCTIC BLUE METALLIC



HYPER BLUE METALLIC<sup>1</sup>

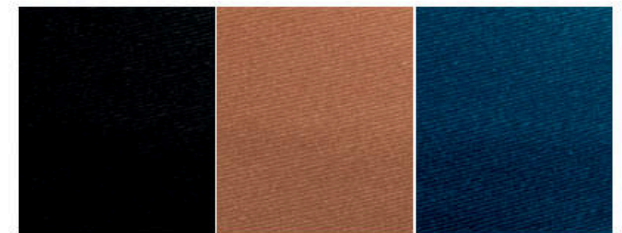


MOSAIC BLACK METALLIC



BLACK

## CONVERTIBLE TOP COLORS



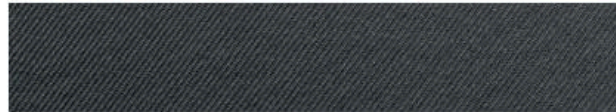
Black

Kalahari

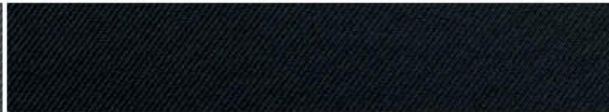
Blue

<sup>1</sup> Extra-cost color.

## FABRICS



Medium Ash Gray Cloth



Jet Black Cloth



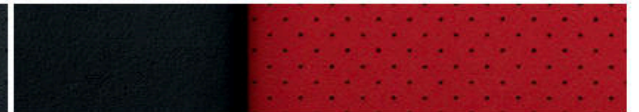
Ceramic White Leather Seating Surfaces<sup>1</sup>



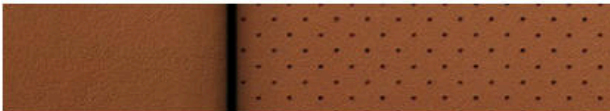
Medium Ash Gray Leather Seating Surfaces



Jet Black Leather Seating Surfaces



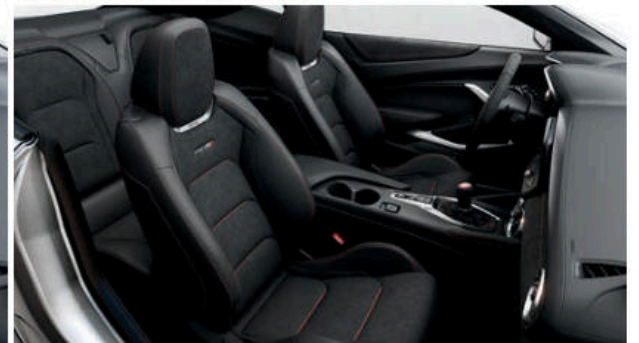
Adrenaline Red Leather Seating Surfaces<sup>2</sup>



Kalahari Leather Seating Surfaces



RECARO<sup>®</sup> Performance Seats with Jet Black Leather Appointments and Sueded Microfiber Inserts<sup>3,4</sup>



RECARO Performance Seats with Jet Black Leather Appointments and Red Accents and Sueded Microfiber Inserts<sup>5</sup>

<sup>1</sup> Available on 2LT and 2SS with Ceramic White Interior Accent Trim Package. Requires Convenience and Lighting Package on 2LT. <sup>2</sup> Available on 2LT and 2SS with Adrenaline Red Interior Accent Trim Package. Requires Convenience and Lighting Package on 2LT. <sup>3</sup> Requires V6 1LE Performance Package when ordered with 1LS or 2LT. <sup>4</sup> Not available on 1LT or ZL1. <sup>5</sup> Requires ZL1.

## PERFORMANCE

	CAMARO 1LS/LT	CAMARO 1LS/LT/V6 1LE	CAMARO SS/SS 1LE	CAMARO ZL1	CAMARO ZL1 1LE EXTREME TRACK PACKAGE
<b>ENGINE</b>	2.0L turbocharged 4-cylinder	3.6L V6	6.2L LT1 V8	6.2L LT4 supercharged V8	6.2L LT4 supercharged V8
<b>BORE AND STROKE</b>	86.00 mm x 86.00 mm	95.00 mm x 85.60 mm	103.25 mm x 92.00 mm	103.25 mm x 92.00 mm	103.25 mm x 92.00 mm
<b>COMPRESSION RATIO</b>	9.5:1	11.5:1	11.5:1	10.0:1	10.0:1
<b>HORSEPOWER</b>	275 hp @ 5500 rpm	335 hp @ 6800 rpm	455 hp @ 6000 rpm	650 hp @ 6400 rpm	650 hp @ 6400 rpm
<b>TORQUE</b>	295 lb.-ft. @ 3000-4500 rpm	284 lb.-ft. @ 5300 rpm	455 lb.-ft. @ 4400 rpm	650 lb.-ft. @ 3600 rpm	650 lb.-ft. @ 3600 rpm
<b>REDLINE</b>	7000 rpm	7200 rpm	6500 rpm	6600 rpm	6600 rpm
<b>AXLE RATIO</b>	3.27:1 (manual, 1LS only) 3.27:1 (automatic, LT only)	2.77:1 (automatic, LT only) 3.27:1 (manual and V6 1LE)	2.77:1 (automatic) 3.73:1 (manual and SS 1LE)	3.73:1 (manual) 2.85:1 (automatic Coupe) 2.77:1 (automatic Convertible)	3.73:1
<b>0 TO 60 (BASED ON INITIAL VEHICLE MOVEMENT)</b>	5.5 seconds (automatic Coupe, LT only) 5.6 seconds (manual Convertible, 1LS only) 5.7 seconds (automatic Convertible, LT only)	5.1 seconds (automatic Coupe, LT only) 5.4 seconds (manual Convertible) 5.3 seconds (automatic Convertible, LT only) 5.2 seconds (manual Coupe and V6 1LE)	4.3 seconds (manual Coupe) 4.0 seconds (automatic Coupe) 4.5 seconds (manual Convertible) 4.2 seconds (automatic Convertible and SS 1LE)	3.7 seconds (manual Coupe) 3.5 seconds (automatic Coupe) 3.9 seconds (manual Convertible) 3.7 seconds (automatic Convertible)	3.7 seconds
<b>QUARTER MILE</b>	14.0 seconds @ 100 mph (manual Coupe, 1LS only) 14.0 seconds @ 99 mph (automatic Coupe, LT only) 14.2 seconds @ 99 mph (manual Convertible, 1LS only) 14.2 seconds @ 98 mph (automatic Convertible, LT only)	13.5 seconds @ 103 mph (automatic Coupe, LT only) 13.9 seconds @ 101 mph (manual Convertible) 13.7 seconds @ 102 mph (automatic Convertible, LT only) 13.7 seconds @ 102 mph (manual Coupe and V6 1LE)	12.3 seconds @ 116 mph (automatic Coupe) 12.7 seconds @ 114 mph (manual Convertible) 12.5 seconds @ 115 mph (automatic Convertible) 12.5 seconds @ 115 mph (manual Coupe and SS 1LE)	11.8 seconds @ 125 mph (manual Coupe) 11.4 seconds @ 127 mph (automatic Coupe) 12.0 seconds @ 124 mph (manual Convertible) 11.6 seconds @ 126 mph (automatic Convertible)	11.8 seconds @ 125 mph
<b>SKID PAD (MAXIMUM LATERAL ACCELERATION)</b>	0.85 g	0.89 g 0.97 g (V6 1LE)	0.97 g (Coupe) 0.95 g (Convertible) 1.02 g (SS 1LE)	1.02 g (Coupe) 1.00 g (Convertible)	1.10 g
<b>TOP SPEED</b>	149 mph	149 mph 155 mph (V6 1LE)	180 mph (Coupe) 155 mph (Convertible) 175 mph (SS 1LE)	198 mph (automatic Coupe)	191 mph
<b>BRAKING SYSTEM</b>	4-wheel antilock, 4-wheel disc Available: Brembo® 4-piston front, performance	4-wheel antilock, 4-wheel disc Available: Brembo 4-piston front, performance	4-wheel antilock, 4-wheel disc, Brembo 4-piston front and rear, performance 4-wheel antilock, 4-wheel disc, Brembo 6-piston monobloc front and 4-piston rear, performance (SS 1LE)	4-wheel antilock, 4-wheel disc, Brembo 6-piston monobloc front and 4-piston rear, performance	
<b>BRAKING DISTANCE (60 TO 0 MPH)</b>	129 ft.	124 ft. (Coupe with available RS Package) 127 ft. (Convertible) 112 ft. (V6 1LE)	117 ft. (Coupe) 120 ft. (Convertible) 107 ft. (SS 1LE)	107 ft. (Coupe) 110 ft. (Convertible)	101 ft.
<b>CURB WEIGHT</b>	3,354 lbs. (manual Coupe, 1LS only) 3,339 lbs. (automatic Coupe, LT only) 3,647 lbs. (manual Convertible, 1LS only) 3,627 lbs. (automatic Convertible, LT only)	3,448 lbs. (manual Coupe) 3,435 lbs. (automatic Coupe, LT only) 3,715 lbs. (manual Convertible) 3,709 lbs. (automatic Convertible, LT only) 3,490 lbs. (V6 1LE)	3,685 lbs. (manual Coupe) 3,697 lbs. (automatic Coupe) 3,956 lbs. (manual Convertible) 3,969 lbs. (automatic Convertible) 3,747 lbs. (SS 1LE)	3,883 lbs. (manual Coupe) 3,944 lbs. (automatic Coupe) 4,113 lbs. (manual Convertible) 4,148 lbs. (automatic Convertible)	3,823 lbs.
<b>WHEELS</b>	18" Silver-painted aluminum	18" Silver-painted aluminum 20" 5-split-spoke forged-aluminum (20" x 8.5" front and 20" x 9.5" rear) (V6 1LE)	20" 5-spoke Bright Silver-painted aluminum (20" x 8.5" front and 20" x 9.5" rear) 20" 5-split-spoke forged-aluminum (20" x 10" front and 20" x 11" rear) (SS 1LE)	20" 10-split-spoke forged-aluminum (20" x 10" front and 20" x 11" rear)	19" 5-split-spoke low-gloss Black-painted forged-aluminum (19" x 11" front and 19" x 12" rear)
<b>TIRES</b>	245/50R18 all-season blackwall	245/50R18 all-season blackwall 245/40ZR20 front and 275/35ZR20 rear, summer-only <sup>1</sup> blackwall, run-flat (V6 1LE)	245/40ZR20 front and 275/35ZR20 rear, summer-only <sup>1</sup> blackwall, run-flat 285/30R20 front and 305/30R20 rear, summer-only <sup>1</sup> blackwall (SS 1LE)	285/30R20 front and 305/30R20 rear, summer-only <sup>1</sup> blackwall	Goodyear Eagle® F1 SuperCar® 3R 305/30R19 front and 325/30R19 rear, summer-only <sup>1,2</sup> blackwall
<b>WEIGHT DISTRIBUTION (F/R)</b>	52/48	52/48	54/46	54/46	54/46

<sup>1</sup> Do not use summer-only tires in winter conditions, as it would adversely affect vehicle safety, performance and durability. Use only GM-approved tire and wheel combinations. Unapproved combinations may change the vehicle's performance characteristics. For important tire and wheel information, go to [my.chevrolet.com/learnAbout/chevrolettires](http://my.chevrolet.com/learnAbout/chevrolettires) or see your dealer. <sup>2</sup> Driving on wet roads, in heavy rain, or through standing water with competition-oriented tires may cause hydroplaning and loss of control. Use extreme caution and drive slowly on wet roads.

## SELECT VEHICLE FEATURES

### CAMARO 1LS

2.0L 275-hp turbocharged 4-cylinder engine with Direct Injection and Variable Valve Timing

6-speed manual transmission

Dual-outlet stainless steel exhaust with bright tips

Driver Mode Selector with 3 modes: Snow/Ice, Tour and Sport

OnStar Guidance Plan<sup>1</sup> with limited service trial, including Automatic Crash Response, Stolen Vehicle Assistance, Roadside Assistance, Turn-by-Turn Navigation, Advanced Diagnostics and more (trial excludes Hands-Free Calling Minutes)

StabiliTrak<sup>®</sup> Electronic Stability Control System with Traction Control

LED daytime running lamps

Teen Driver technology

Rear vision camera

18" Silver-painted aluminum wheels

Keyless Open and Start

Chevrolet MyLink<sup>2</sup> Radio with 7-inch diagonal color touch-screen display, featuring Android Auto<sup>3</sup> and Apple CarPlay<sup>4</sup> compatibility

Auxiliary input jack and 2 USB ports<sup>5</sup>

Bluetooth<sup>®</sup> wireless technology<sup>6</sup> for select phones

SiriusXM Satellite Radio<sup>7</sup> All Access Package with 12-month trial subscription

Driver Information Center with color display

Leather-wrapped flat-bottom steering wheel with steering wheel-mounted controls for audio and cruise

Front sport buckets with 8-way power driver-seat adjuster and 6-way power passenger-seat adjuster

Front reading lamps and interior dome lamp with illuminated entry

OnStar Basic Plan<sup>8</sup> for five years includes select features of the myChevrolet Mobile App<sup>9</sup> including remote start (if equipped), door lock or unlock, honk your horn and flash your lights, and send destinations to your Chevrolet MyLink<sup>2</sup> navigation screen (if equipped). Limited OnStar services include Advanced Diagnostics and Dealer Maintenance Notification

OnStar 4G LTE and built-in Wi-Fi<sup>®</sup> hotspot for up to seven devices;<sup>10</sup> includes data trial for 3 months or 3 GB (whichever comes first)

### CAMARO 1LT In addition to or replacing LS features, 1LT includes:

8-speed paddle-shift automatic transmission

Remote vehicle starter system

### CAMARO 2LT In addition to or replacing 1LS features, 2LT includes:

Chevrolet MyLink<sup>2</sup> Radio with 8-inch diagonal color touch-screen display, featuring Android Auto<sup>3</sup> and Apple CarPlay<sup>4</sup> compatibility

Bose<sup>®</sup> premium 9-speaker (Coupe) or 7-speaker (Convertible) audio system

Dual-zone automatic climate control with individual climate settings for driver and front passenger, dedicated passenger controls and outside temperature display

Heated and ventilated leather-trimmed seats for driver and front passenger

Universal Home Remote

### CAMARO 1SS In addition to or replacing 1LS features, 1SS includes:

6.2L 455-hp V8 engine with Direct Injection and Variable Valve Timing

Limited-slip rear differential

Brembo<sup>®</sup> performance 4-wheel disc brakes with ABS, 4-piston front and rear

High-intensity discharge headlamps with LED signature and automatic exterior lamp control and LED daytime running lamps

20" Bright Silver-painted 5-spoke aluminum wheels (20" x 8.5" front, 20" x 9.5" rear)

Enhanced Driver Information Center with 8-inch diagonal reconfigurable color display

Driver Mode Selector with 4 modes: Snow/Ice, Tour, Sport and Track

### CAMARO 2SS In addition to or replacing 1SS features, 2SS includes:

Head-Up Display with color digital readouts for vehicle speed, selected gear, g force, audio system information, high beam indicator, compass, outside air temperature, turn signals, tachometer, vehicle messages, turn-by-turn navigation information and phone information

Bose premium 9-speaker (Coupe) or 7-speaker (Convertible) audio system

Interior spectrum lighting with 24 different color selections

Memory Package: 2-position memory for 8-way power driver seat and outside mirrors

Dual-zone automatic climate control with individual climate settings for driver and front passenger, dedicated passenger controls and outside temperature display

Heated and ventilated leather-trimmed seats for driver and front passenger

Aluminum accents on door trim and shifter cap

Illuminated doorsill plates

Wireless charging<sup>11</sup>

### CAMARO ZL1 In addition to or replacing 2SS features, ZL1 includes:

Launch control

Magnetic Ride Control suspension

Brembo performance 4-wheel disc brakes with ABS, 6-piston front and 4-piston rear

RECARO<sup>®</sup> performance seats with Jet Black leather appointments and Red accents and sueded microfiber inserts

Sport alloy pedals

<sup>1</sup> Visit [onstar.com](http://onstar.com) for coverage map, details and system limitations. OnStar acts as a link to existing emergency service providers. <sup>2</sup> MyLink functionality varies by model. Full functionality requires compatible Bluetooth and smartphone, and USB connectivity for some devices. Map coverage available in the United States, Puerto Rico and Canada. MyLink on Camaro does not include CD player. <sup>3</sup> Vehicle user interface is a product of Google and its terms and privacy statements apply. Requires the Android Auto app on Google Play and an Android compatible smartphone running Android 5.0 Lollipop or higher and data plan rates apply. <sup>4</sup> Vehicle user interface is a product of Apple and its terms and privacy statements apply. Requires compatible iPhone and data plan rates apply. <sup>5</sup> Not compatible with all devices. <sup>6</sup> Visit [my.chevrolet.com/learn](http://my.chevrolet.com/learn) for vehicle and smartphone compatibility. <sup>7</sup> If you decide to continue service after your trial, the subscription plan you choose will automatically renew thereafter and you will be charged according to your chosen payment method at then-current rates. Fees and taxes apply. To cancel you must call SiriusXM at 1-866-635-2349. See SiriusXM Customer Agreement for complete terms at [siriusxm.com](http://siriusxm.com). All fees and programming subject to change. <sup>8</sup> Does not include emergency or security services. Visit [onstar.com](http://onstar.com) for coverage map, details and system limitations. <sup>9</sup> Requires active OnStar service, compatible device, factory-installed remote start and power locks. Data rates apply. Visit [onstar.com](http://onstar.com) for details and system limitations. <sup>10</sup> Requires a compatible mobile device, active OnStar service and data plan. 4G LTE service available in select markets. Visit [onstar.com](http://onstar.com) for coverage map, details and system limitations. Data plans provided by AT&T. <sup>11</sup> The system wirelessly charges one PMA- or Qi-compatible mobile device. Some devices require an adaptor or back cover. To check for phone or other device compatibility, visit [my.chevrolet.com/learn](http://my.chevrolet.com/learn) for details.

## SPECIFICATIONS

● STANDARD ○ AVAILABLE – NOT AVAILABLE

	1LS	1LT	2LT	1SS	2SS	ZL1
<b>EXTERIOR</b>						
Headlamps: High-intensity discharge, automatic	○ <sup>1</sup>	○ <sup>2</sup>	○ <sup>1</sup>	●	●	●
Mirrors: Power-adjustable, body-color Heated, power-adjustable, body-color, with driver-side auto-dimming feature	●	●	●	●	–	–
Spoiler: Lip, decklid-mounted Stanchion	○ <sup>2</sup>	○ <sup>2</sup>	○ <sup>2</sup>	–	–	–
Exposed carbon-fiber-weave hood insert	–	–	–	–	–	○ <sup>5</sup>
<b>GRAPHICS</b>						
Black Center Stripe (Not available with Black)	○	○	○	–	–	–
Black Metallic Center Stripe (not available with Mosaic Black Metallic)	–	–	–	○	○	○ <sup>6,7</sup>
Silver Center Stripe (not available with Silver Ice Metallic or Arctic Blue Metallic)	○	○	○	○	○	–
White Pearl Center Stripe (not available with Summit White)	○	○	○	○	○	–
Black Rally Stripes (not available with Black)	○	○	○	–	–	–
Black Metallic Rally Stripes (not available with Mosaic Black Metallic)	–	–	–	○	○	–
Silver Rally Stripes (not available with Silver Ice Metallic or Arctic Blue Metallic)	○	○	○	○	○	–
White Pearl Rally Stripes (not available with Summit White)	○	○	○	○	○	–
<b>ENGINE/CHASSIS</b>						
Brakes: 4-wheel antilock disc Brembo® 4-piston front, performance Brembo 4-piston front and rear, performance Brembo 6-piston monobloc front, 4-piston rear, performance	●	●	●	●	●	●
Cooling system: Extra-capacity	○ <sup>8</sup>	○ <sup>9</sup>	○ <sup>8</sup>	●	●	●
Differential: Limited-slip Electronic Limited-Slip (eLSD) Rear differential cooler	●	–	○ <sup>12</sup>	●	●	–
	–	–	–	○ <sup>10</sup>	○ <sup>10,11</sup>	○ <sup>13</sup>
	○ <sup>14</sup>	–	○ <sup>14</sup>	●	●	●

	1LS	1LT	2LT	1SS	2SS	ZL1
<b>ENGINE/CHASSIS (CONTINUED)</b>						
Engine: 2.0L turbocharged 4-cylinder; 275 hp and 295 lb.-ft. of torque 3.6L V6; 335 hp and 284 lb.-ft. of torque 6.2L LT1 V8; 455 hp and 455 lb.-ft. of torque 6.2L LT4 supercharged V8; 650 hp and 650 lb.-ft. of torque Auxiliary engine coolant cooler External engine oil cooler	●	●	●	–	–	–
	○	○	○	–	–	–
	–	–	–	●	●	–
	–	–	–	–	–	●
	○ <sup>13,15</sup>	○ <sup>13,15</sup>	○ <sup>13,15</sup>	● <sup>13</sup>	● <sup>13</sup>	●
	○ <sup>8,13</sup>	○ <sup>8,13</sup>	○ <sup>8,13</sup>	●	●	●
Exhaust system: Dual-outlet stainless steel with polished tips	●	●	●	●	●	–
Dual-mode performance with quad outlets	○ <sup>16</sup>	○ <sup>17</sup>	○ <sup>16</sup>	○	○	●
4-wheel independent suspension: Sport Performance Performance with Multimatic DSSV™ (Dynamic Suspension Spool Valve) dampers Magnetic Ride Control	●	●	●	–	–	–
	○ <sup>14</sup>	–	○ <sup>14</sup>	●	●	●
	–	–	–	–	–	○ <sup>18</sup>
	–	–	–	○	○	● <sup>19</sup>
Transmission: 6-speed manual with Hill Hold feature 8-speed paddle-shift automatic 10-speed paddle-shift automatic Transmission oil cooler	●	–	●	● <sup>20</sup>	● <sup>20</sup>	● <sup>20</sup>
	–	● <sup>21</sup>	○ <sup>21</sup>	○ <sup>22</sup>	○ <sup>22</sup>	–
	–	–	–	–	–	○ <sup>19,22</sup>
	–	○ <sup>23</sup>	○ <sup>23</sup>	●	●	●
<b>SAFETY &amp; SECURITY</b>						
Air bags: <sup>24</sup> Dual-stage frontal and knee (Coupe/Convertible); head-curtain and thorax side-impact (Coupe); head and thorax side-impact (Convertible) for driver and front passenger; includes Passenger Sensing System	●	●	●	●	●	●
OnStar Guidance Plan <sup>25</sup> with limited service trial, including Automatic Crash Response, Stolen Vehicle Assistance, Roadside Assistance, Turn-by-Turn Navigation, Advanced Diagnostics and more (trial excludes Hands-Free Calling Minutes)	●	●	●	●	●	●
Rear Park Assist	–	–	○ <sup>3</sup>	–	●	●
Rear Cross Traffic Alert	–	–	○ <sup>3</sup>	–	●	●
Lane Change Alert with Side Blind Zone Alert	–	–	○ <sup>3</sup>	–	●	●

	1LS	1LT	2LT	1SS	2SS	ZL1
<b>INTERIOR</b>						
Air conditioning: Single-zone automatic climate control Dual-zone automatic climate control with dedicated passenger controls	●	●	–	●	–	–
Carbon-fiber instrument panel molding	–	–	–	–	–	○
Driver Information Center (DIC): Color Enhanced, with 8-inch diagonal reconfigurable multi-color display	●	●	●	–	–	–
Head-Up Display: Color	–	–	○ <sup>3</sup>	○ <sup>31</sup>	●	●
Lighting: Interior spectrum with 24 different color selections	–	–	○ <sup>3</sup>	–	●	●
Mirror: Rearview manual day/night, frameless Auto-dimming	●	●	–	●	–	–
Remote vehicle starter system	–	●	○ <sup>23</sup>	○ <sup>23</sup>	○ <sup>23</sup>	○ <sup>23</sup>
Sunroof: Power	○	○	○	○	○	○
Wireless charging <sup>28</sup>	–	–	○ <sup>3</sup>	–	●	●
<b>ENTERTAINMENT</b>						
Chevrolet MyLink <sup>27</sup> Radio with 7-inch diagonal color touch-screen display, AM/FM stereo with seek-scan and digital clock, includes Bluetooth® audio streaming <sup>28</sup> for select phones; featuring Apple CarPlay™ <sup>29</sup> and Android Auto™ <sup>30</sup> compatibility	●	●	–	–	–	–
Chevrolet MyLink <sup>27</sup> Radio with 8-inch diagonal color touch-screen display, includes features listed above	○ <sup>31</sup>	○ <sup>31</sup>	●	●	●	●
Chevrolet MyLink <sup>27</sup> Radio with Navigation; <sup>32</sup> includes 8-inch diagonal color touch-screen display and GPS navigation system	–	–	○	–	○	○
Performance Data Recorder and video recorder	–	–	○ <sup>3,14</sup>	○ <sup>30</sup>	○ <sup>10,11</sup>	○ <sup>13</sup>
Bose® premium 9-speaker (Coupe) or 7-speaker (Convertible) audio system	○ <sup>31</sup>	○ <sup>31</sup>	●	–	●	●
SiriusXM Satellite Radio <sup>33</sup> All Access Package with 12-month trial subscription	●	●	●	●	●	●

**1** Requires available RS Package or V6 1LE Performance Package. **2** Requires available RS Package. **3** Requires available Convenience and Lighting Package. **4** Convertible only. **5** Included with available ZL1 1LE Extreme Track Package. **6** Not available with exposed carbon-fiber-weave hood insert or ZL1 1LE Extreme Track Package. **7** Roof, decklid and spoiler on Coupe only. Decklid, tonneau cover and spoiler on Convertible only. **8** Requires available Heavy-Duty Cooling and Brake Package or V6 1LE Performance Package. **9** Requires available Heavy-Duty Cooling and Brake Package. **10** Requires available SS 1LE Performance Package. **11** Late availability. **12** Requires 6-speed manual transmission or available V6 1LE Performance Package. **13** Coupe only. **14** Requires available V6 1LE Performance Package. **15** Requires available Heavy-Duty Cooling and Brake Package with 2.0L 4-cylinder engine. **16** Requires available 3.6L V6 engine or V6 1LE Performance Package. **17** Requires available 3.6L V6 engine. **18** Requires available ZL1 1LE Extreme Track Package. **19** Not available with ZL1 1LE Extreme Track Package. **20** Includes Active Rev Matching. **21** Includes Active Fuel Management with available 3.6L V6 engine. **22** Includes Active Fuel Management. **23** Requires available automatic transmission. **24** A NOTE ON CHILD SAFETY: Always use safety belts and the correct child restraint for your child's age and size, even with air bags. Even in vehicles equipped with the Passenger Sensing System, children are safer when properly secured in a rear seat in the appropriate infant, child or booster seat. Never place a rear-facing infant restraint in the front seat of any vehicle equipped with an active frontal air bag. See the Owner's Manual and the child safety seat instructions for more safety information. **25** Visit onstar.com for coverage map, details and system limitations. OnStar acts as a link to existing emergency service providers. **26** The system wirelessly charges one PMA- or Qi-compatible mobile device. Some devices require an adaptor or back cover. To check for phone or other device compatibility, visit my.chevrolet.com/learn for details. **27** MyLink functionality varies by model. Full functionality requires compatible Bluetooth and smartphone, and USB connectivity for some devices. MyLink on Camaro does not include CD player. **28** Visit my.chevrolet.com/learn for vehicle and smartphone compatibility. **29** Vehicle user interface is a product of Apple and its terms and privacy statements apply. Requires compatible iPhone and data plan rates apply. **30** Vehicle user interface is a product of Google and its terms and privacy statements apply. Requires the Android Auto app on Google Play and an Android compatible smartphone running Android 5.0 Lollipop or higher and data plan rates apply. **31** Requires available Technology Package. **32** Map coverage available in the United States, Puerto Rico and Canada. **33** If you decide to continue service after your trial, the subscription plan you choose will automatically renew thereafter and you will be charged according to your chosen payment method at then-current rates. Fees and taxes apply. To cancel you must call SiriusXM at 1-866-635-2349. See SiriusXM Customer Agreement for complete terms at siriusxm.com. All fees and programming subject to change.

## SPECIFICATIONS (CONTINUED)

● STANDARD ○ AVAILABLE – NOT AVAILABLE

	1LS	1LT	2LT	1SS	2SS	ZL1
<b>ENTERTAINMENT (CONTINUED)</b>						
OnStar Basic Plan <sup>1</sup> for five years includes select features of the myChevrolet Mobile App <sup>2</sup> including remote start (if equipped), door lock or unlock, honk your horn and flash your lights, and send destinations to your Chevrolet MyLink <sup>3</sup> navigation screen (if equipped). Limited OnStar services include Advanced Diagnostics and Dealer Maintenance Notification	●	●	●	●	●	●
OnStar 4G LTE and built-in Wi-Fi <sup>4</sup> hotspot for up to seven devices <sup>5</sup> ; includes data trial for 3 months or 3 GB (whichever comes first)	●	●	●	●	●	●
<b>WHEELS</b>						
18" Silver-painted aluminum	●	●	●	–	–	–
20" 5-spoke Bright Silver-painted aluminum wheels paired with summer-only tires <sup>5</sup> (20" x 8.5" front, 20" x 9.5" rear)	–	–	–	●	●	–
20" 5-split-spoke premium Gray-painted machined-face aluminum	○ <sup>6</sup>	○ <sup>6</sup>	○ <sup>6</sup>	–	–	–
20" 5-spoke low-gloss Black aluminum	○	○	○	–	–	–
20" 5-split-spoke Bright Silver-painted aluminum	○ <sup>6</sup>	○ <sup>6</sup>	○ <sup>6</sup>	–	–	–
20" 5-split-spoke premium Gray-painted machined-face aluminum wheels paired with summer-only tires <sup>5</sup> (20" x 8.5" front, 20" x 9.5" rear)	–	–	–	○	○	–
20" 5-split-spoke Bright Silver-painted aluminum wheels paired with summer-only tires <sup>5</sup> (20" x 8.5" front, 20" x 9.5" rear)	–	–	–	○	○	–
20" 5-spoke low-gloss Black aluminum wheels paired with summer-only tires <sup>5</sup> (20" x 8.5" front, 20" x 9.5" rear)	–	–	–	○	○	–
20" 5-split-spoke Black-painted forged-aluminum wheels paired with summer-only tires <sup>5</sup> (20" x 8.5" front, 20" x 9.5" rear)	○ <sup>7</sup>	–	○ <sup>7</sup>	–	–	–
20" Black-painted aluminum with Red accents	○ <sup>8</sup>	○ <sup>8</sup>	○ <sup>8</sup>	–	–	–

	1LS	1LT	2LT	1SS	2SS	ZL1
<b>WHEELS (CONTINUED)</b>						
20" Black-painted aluminum wheels with Red accents paired with summer-only tires <sup>5</sup> (20" x 8.5" front, 20" x 9.5" rear)	–	–	–	○ <sup>9</sup>	○ <sup>8</sup>	–
20" 5-split-spoke Satin Graphite forged-aluminum wheels paired with summer-only tires <sup>5</sup> (20" x 10" front, 20" x 11" rear)	–	–	–	○ <sup>9</sup>	○ <sup>9,10</sup>	–
20" 10-split-spoke Dark Graphite-painted forged-aluminum wheels paired with summer-only tires <sup>5</sup> (20" x 10" front, 20" x 11" rear)	–	–	–	–	–	●
19" 5-split-spoke low-gloss Black-painted forged-aluminum wheels paired with summer-only tires <sup>5</sup> (19" x 11" front, 19" x 12" rear)	–	–	–	–	–	○ <sup>11</sup>
<b>PACKAGES</b>						
RS Package	○	○	○	–	–	–
20" 5-split-spoke premium Gray-painted machined-face aluminum wheels, high-intensity discharge headlamps, LED taillamps, RS-specific grilles and decklid-mounted lip spoiler (Coupe only). Also upgradable to 20" 5-spoke low-gloss Black aluminum wheels or 20" 5-split-spoke Bright Silver-painted aluminum wheels	–	–	–	–	–	–
Heavy-Duty Cooling and Brake Package	○ <sup>12</sup>	○ <sup>12</sup>	○ <sup>12</sup>	–	–	–
External engine oil cooler, extra-capacity cooling system and 4-piston Brembo <sup>®</sup> performance (front calipers only) 4-wheel disc brakes with ABS; also includes auxiliary engine coolant cooler with 2.0L 4-cylinder engine	–	–	–	–	–	–
Technology Package	○	○	–	–	–	–
Chevrolet MyLink <sup>3</sup> Radio with 8-inch diagonal color touch-screen display and Bose <sup>®</sup> premium 9-speaker (Coupe) or 7-speaker (Convertible) audio system	–	–	–	–	–	–
Convenience and Lighting Package	–	–	○	–	–	–
Memory Package, wireless charging <sup>13</sup> heated steering wheel, enhanced Driver Information Center with 8-inch diagonal reconfigurable multi-color display, Head-Up Display, Rear Park Assist, Rear Cross Traffic Alert, Lane Change Alert with Side Blind Zone Alert, outside heated power-adjustable body-color mirrors with driver-side auto-dimming feature, interior spectrum lighting, illuminated doorsill plates, and aluminum accents on door trim and shifter cap	–	–	–	–	–	–
Adrenaline Red Interior Accent Trim Package	–	–	○ <sup>14</sup>	–	○	–
Black interior with Adrenaline Red seat inserts, door inserts and stitching on front seats, doors, steering wheel, shifter and center console (not available with Bright Yellow or Hyper Blue Metallic exterior colors)	–	–	–	–	–	–

	1LS	1LT	2LT	1SS	2SS	ZL1
<b>PACKAGES (CONTINUED)</b>						
Ceramic White Interior Accent Trim Package	–	–	○ <sup>14</sup>	–	○	–
Black interior with Ceramic White seat inserts, door inserts and stitching on front seats, doors, steering wheel, shifter and center console	–	–	–	–	–	–
Redline Edition	○ <sup>6</sup>	○ <sup>6</sup>	○ <sup>6</sup>	○	○	–
Black front and rear bowtie emblems, fender hash mark decal and Camaro badge in Black with Red outline, Red accent grille, decklid blackout decal, dark-finish taillamps, Black outside rearview mirrors, 20" Black-painted aluminum wheels with Red accents (SS models equipped with summer-only tires <sup>5</sup> ), and premium carpeted floor mats with Camaro logo. (Requires Silver Ice Metallic, Summit White or Black exterior colors. Requires Jet Black interior. Not available with any graphics.)	–	–	–	–	–	–
V6 1LE Performance Package <sup>15</sup>	○ <sup>16</sup>	–	○ <sup>16,17</sup>	–	–	–
Black hood wrap, Black outside rearview mirrors, larger front grille openings, front splitter, rear blade spoiler, Black 20" forged-aluminum wheels with 245/40R20 (front) and 275/35R20 (rear) summer-only tires <sup>5</sup> ; suede-wrapped flat-bottom steering wheel and shift knob, Brembo 4-piston front brake calipers, FE3 suspension components (from Camaro SS) including dampers, rear cradle mounts, ball-jointed rear toe links and stabilizer bars, dual-mode exhaust, limited-slip differential, and heavy-duty cooling including engine oil cooler, dual outboard radiators and transmission cooler	–	–	–	–	–	–
SS 1LE Performance Package <sup>15</sup>	–	–	–	○ <sup>18</sup>	○ <sup>10,18</sup>	–
Black hood wrap, Black outside rearview mirrors, front splitter, rear blade spoiler, Satin Graphite 20" forged-aluminum wheels with Goodyear Eagle <sup>®</sup> F1 SuperCar <sup>®</sup> 285/30R20 (front) and 305/30R20 (rear) summer-only tires <sup>5</sup> ; suede-wrapped flat-bottom steering wheel and shift knob, color Head-Up Display, Brembo brakes with 6-piston monobloc front two-piece rotors and 4-piston rear calipers, dual-mode exhaust, Magnetic Ride Control, Electronic Limited-Slip Differential, Performance-Tuned suspension with unique bushings, springs and stabilizer bars, and heavy-duty cooling including engine oil cooler, dual outboard radiators, transmission cooler and rear differential cooler	–	–	–	–	–	–
ZL1 1LE Extreme Track Package <sup>15</sup>	–	–	–	–	–	○ <sup>19</sup>
Black hood wrap and outside rearview mirrors, unique front splitter and front dive planes with lower daytime running lamps deleted, exposed-weave carbon-fiber hood insert and rear spoiler, dark-finish taillamps, low-gloss Black-painted forged-aluminum wheels with Goodyear Eagle F1 SuperCar 3R 305/30R19 (front) and 325/30R19 (rear) summer-only tires <sup>5,20</sup> ; fixed rear seat, suede-wrapped flat-bottom steering wheel and shift knob, color Head-Up Display, Red-painted Brembo brakes with 6-piston monobloc front two-piece rotors and 4-piston rear calipers, dual-mode exhaust, adjustable Performance Suspension with Multimatic DSSV <sup>™</sup> (Dynamic Suspension Spool Valve) dampers, 3-way adjustable rear stabilizer bar, and Electronic Limited-Slip Differential	–	–	–	–	–	–

<sup>1</sup> Does not include emergency or security services. Visit [onstar.com](http://onstar.com) for coverage map, details and system limitations. <sup>2</sup> Requires active OnStar service, compatible device, factory-installed remote start and power locks. Data rates apply. Visit [onstar.com](http://onstar.com) for details and system limitations. <sup>3</sup> MyLink functionality varies by model. Full functionality requires compatible Bluetooth and smartphone, and USB connectivity for some devices. MyLink on Camaro does not include CD player. <sup>4</sup> Requires a compatible mobile device, active OnStar service and data plan. 4G LTE service available in select markets. Visit [onstar.com](http://onstar.com) for coverage map, details and system limitations. Data plans provided by AT&T. <sup>5</sup> Do not use summer-only tires in winter conditions, as it would adversely affect vehicle safety, performance and durability. Use only GM-approved tire and wheel combinations. Unapproved combinations may change the vehicle's performance characteristics. For important tire and wheel information, go to [my.chevrolet.com/learnAbout/chevrolettires](http://my.chevrolet.com/learnAbout/chevrolettires) or see your dealer. <sup>6</sup> Requires available RS Package. <sup>7</sup> Requires available V6 1LE Performance Package. <sup>8</sup> Requires available Redline Edition. <sup>9</sup> Requires available SS 1LE Performance Package. <sup>10</sup> Late availability. <sup>11</sup> Requires available ZL1 1LE Extreme Track Package. <sup>12</sup> Requires available RS Package or 20" 5-spoke low-gloss Black aluminum wheels. <sup>13</sup> The system wirelessly charges one PMA- or Qi-compatible mobile device. Some devices require an adaptor or back cover. To check for phone or other device compatibility, visit [my.chevrolet.com/learn](http://my.chevrolet.com/learn) for details. <sup>14</sup> Requires available Convenience and Lighting Package. <sup>15</sup> Coupe only. <sup>16</sup> Requires Jet Black interior and available 3.6L V6 engine. Not available with RS Package or Redline Edition. <sup>17</sup> Requires 6-speed manual transmission. <sup>18</sup> Requires Jet Black interior and 6-speed manual transmission. Not available with power sunroof or Redline Edition. <sup>19</sup> Requires 6-speed manual transmission. Not available with power sunroof or Black Metallic Center Stripe. <sup>20</sup> Driving on wet roads, in heavy rain, or through standing water with competition-oriented tires may cause hydroplaning and loss of control. Use extreme caution and drive slowly on wet roads.



## COMPLETE CARE

Experience Chevrolet Complete Care, a comprehensive coverage, warranty and protection program that comes standard with every new 2018 Chevrolet Camaro lease and purchase. Simply, it is designed around you, to make it easy to keep your Chevrolet like new – and give you the confidence you deserve when you need it most.

## YOUR COMPREHENSIVE OWNER BENEFIT PROGRAM.

Includes two maintenance visits (oil and filter changes, tire rotations [excludes Camaro ZL1 and models with available 1LE Performance Package, due to their unidirectional tires; see Owner's Manual for details] and multipoint vehicle inspections)<sup>1</sup>

5 years/60,000 miles of Roadside Assistance and Courtesy Transportation<sup>2</sup>

5-year/60,000-mile Powertrain Limited Warranty.<sup>2</sup>

3-year/36,000-mile Bumper-to-Bumper Limited Warranty.<sup>2</sup>

6 years/100,000 miles of Rust-Through Protection.<sup>2</sup>

5 years of OnStar Basic Plan<sup>3</sup> including select features of the myChevrolet Mobile App<sup>4</sup>

Limited service trial of OnStar Guidance Plan.<sup>5</sup>

## DIMENSIONS

Length	188.3" (LS, LT and SS) 190.2" (ZL1)	Width	74.7" (LS, LT and SS) 75.0" (ZL1)
Wheelbase	110.7"	Front Track	62.5" (LS and LT) 63.0" (SS) 63.4" (ZL1)
	53.1" (LS, LT and SS Coupe) 52.9" (LS, LT and SS Convertible and ZL1 Coupe)	Rear Track	63.7" (LS and LT) 62.9" (SS) 62.0" (ZL1)
Height	52.6" (ZL1 Convertible)		

Head Room (Coupe, front)	38.5"
Head Room (Convertible, front)	38.4"
Leg Room (front)	43.9"

## MAXIMUM CAPACITIES

### EPA-ESTIMATED FUEL ECONOMY

2.0L turbocharged 4-cylinder	20 MPG city/30 highway/23 combined (manual) 22 MPG city/31 highway/25 combined (automatic)
3.6L V6	16 MPG city/28 highway/20 combined (manual) 19 MPG city/29 highway/23 combined (automatic)
6.2L V8	16 MPG city/25 highway/19 combined (manual) 17 MPG city/27 highway/20 combined (automatic)
6.2L supercharged V8	14 MPG city/20 highway/16 combined (manual) 13 MPG city/21 highway/15 combined (automatic)

### FUEL TANK (APPROXIMATE)

19 gallons

### CARGO VOLUME<sup>6</sup>

9.1 cubic feet (Coupe)  
7.3 cubic feet (Convertible, top up)

## OWNERSHIP EXTRAS



CHEVROLET.COM/WARRANTY



CHEVROLET.COM/ACCESSORIES



ONSTAR.COM



SIRIUSXM.COM

## NEW VEHICLE LIMITED WARRANTY

**5-YEAR/60,000-MILE TRANSFERABLE POWERTRAIN LIMITED WARRANTY** Every 2018 Chevrolet Camaro comes with a 5-year/60,000-mile (whichever comes first) transferable Powertrain Limited Warranty. 24/7 Roadside Assistance and Courtesy Transportation are also offered for the duration of the Powertrain Limited Warranty. Please see your Chevrolet dealer for details.

**3-YEAR/36,000-MILE BUMPER-TO-BUMPER LIMITED WARRANTY** Chevrolet will warrant each 2018 Camaro from bumper to bumper for 3 years/36,000 miles (whichever comes first; see dealer for details), with no deductible, from the original in-service date of the vehicle, for warrantable repairs that are required as a result of defects due to materials and/or workmanship. Cosmetic corrosion resulting from defects is also covered under the Bumper-to-Bumper Limited Warranty. In addition, rust-through corrosion will be covered for 6 years/100,000 miles (whichever comes first). See dealer for details.

<sup>1</sup> Maintenance visits must occur within two years or 24,000 miles of vehicle delivery, whichever comes first. Does not include air filters. See participating dealer for other restrictions and complete details. <sup>2</sup> Whichever comes first. See dealer for details. <sup>3</sup> Does not include emergency or security services. Visit [onstar.com](http://onstar.com) for coverage map, details and system limitations. <sup>4</sup> Requires active OnStar service, compatible device, factory-installed remote start and power locks. Data rates apply. Visit [onstar.com](http://onstar.com) for details and system limitations. <sup>5</sup> Visit [onstar.com](http://onstar.com) for coverage map, details and system limitations. <sup>6</sup> Cargo and load capacity limited by weight and distribution.

## IMPORTANT INFORMATION

**CHEVROLET OWNER CENTER (MY.CHEVROLET.COM)** Everything you need to know. Anything you need to do. Your Chevrolet Owner Center makes it easy. Create your account today to get the most out of your new vehicle. Get special alerts and offers, schedule service, review your maintenance schedule, and view how-to videos specifically for your vehicle. All online, anytime. Visit the Owner Center today to register or take a tour.

**ENGINES** Chevrolet products are equipped with engines produced by GM Global Propulsion Systems or other suppliers to GM worldwide. The engines in Chevrolet products may also be used in other GM makes and models.

**ASSEMBLY** Chevrolet vehicles and their components are assembled or produced by different operating units of General Motors, its subsidiaries or suppliers to GM worldwide. We sometimes find it necessary to produce Chevrolet vehicles with different or differently sourced components than originally scheduled. Since some options may be unavailable when your vehicle is assembled, we suggest you verify that your vehicle includes the equipment you ordered and that, if there were changes, they are acceptable to you.

**ONSTAR** OnStar services require vehicle electrical system (including battery), wireless service and GPS satellite signals to be available and operating for features to function properly. OnStar acts as a link to existing emergency service providers. Subscription Service Agreement required. Call 1.888.4ONSTAR (1-888-466-7827) or visit onstar.com for OnStar Terms and Conditions, Privacy Policy, details and system limitations.

**A NOTE ON CHILD SAFETY** Always use safety belts and the correct child restraint for your child's age and size, even with air bags. Even in vehicles equipped with the Passenger Sensing System, children are safer when properly secured in a rear seat in the appropriate infant, child or booster seat. Never place a rear-facing infant restraint in the front seat of any vehicle equipped with an active frontal air bag. See the Owner's Manual and the child safety seat instructions for more safety information.

**IMPORTANT WORDS ABOUT THIS CATALOG** We have tried to make this catalog comprehensive and factual. We reserve the right, however, to make changes at any time, without notice, in prices, colors, materials, equipment, specifications, models and availability. Specifications, dimensions, measurements, ratings and other numbers in this catalog and other printed materials provided at the dealership or affixed to vehicles are approximations based on design and engineering drawings, prototypes and laboratory tests. Your vehicle may differ due to variations in manufacture and equipment. Since some information may have been updated since the time of printing, please check with your Chevrolet dealer for complete details. Chevrolet reserves the right to lengthen or shorten the model year

for any product for any reason or to start and end model years at different times. Certain vehicle features may lose their usefulness over time due to obsolescence from technological changes. Unless otherwise noted, all claims based on GM Sports Car segment and latest available competitive information. Excludes other GM vehicles.

**TIRES** Camaro SS and ZL1 models, as well as models with available 1LE Performance Packages, come equipped with summer-only tires<sup>1</sup> that tend to wear faster and are more susceptible to damage from road hazards or curb impact than standard profile tires. This type of damage is not covered by the GM New Vehicle Limited Warranty. See your dealer for proper tire selection.

**SPARE TIRE INFORMATION** There is no standard jack or spare tire in the 2018 Chevrolet Camaro. Some vehicles have a tire sealant and compressor kit that uses a liquid tire sealant to temporarily seal up to a one-quarter-inch puncture in the tread area of the tire. After using the tire inflator kit, it is recommended that you take the tire to an authorized retailer for inspection and repair as soon as possible, but at least within 100 miles of driving. The tire sealant cannot seal and inflate sidewall damage, punctures larger than one-quarter inch, or a tire that has unseated from the wheel. The sealant can only be used on one tire and for one time before its expiration date.

**CHEVROLET OWNERSHIP EXPERIENCE** Chevrolet is committed to enhancing the vehicle shopping and ownership experience through a wide array of programs. Visit [chevrolet.com](http://chevrolet.com) to build and price, find a vehicle, request a quote, compare vehicles, find financial tools or track your vehicle order. You'll also find information about 24-hour Roadside Assistance, Courtesy Transportation, Customer Assistance, GM Mobility, safety and current incentives.

**CHEVROLET.COM/SAFETY** Chevrolet is committed to keeping you and your family safe – from the start of your journey to your destination. That's why every Chevrolet is designed with a comprehensive list of safety and security features to help give you peace of mind.

**GMMOBILITY.COM (1-800-323-9935)** GM Mobility™ offers financial assistance for eligible adaptive equipment to make automotive travel easier for persons with disabilities or special transportation needs. To learn more about special GM Mobility offers, visit [gmmobility.com](http://gmmobility.com).

**THE BUYPOWER CARD** The Chevrolet BuyPower Card – Every purchase you make with the BuyPower Card from Capital One\* helps you earn toward an eligible new Chevrolet, Buick, GMC or Cadillac vehicle. There's no limit on the amount you can earn or redeem, and your Earnings don't expire. Visit [chevroletbuypowercard.com/catalogs](http://chevroletbuypowercard.com/catalogs).

\* Capital One, N.A. is the issuer of the BuyPower Card. General Motors ("GM") is responsible for the operation and administration of the Earnings program.



TWITTER.COM/CHEVROLET



YOUTUBE.COM/CHEVROLET



FACEBOOK.COM/CHEVROLET

GM, the GM logo, Chevrolet, the Chevrolet logo, and the slogans, emblems, vehicle model names, vehicle body designs and other marks appearing in this catalog are the trademarks and/or service marks of General Motors, its subsidiaries, affiliates or licensors. ©2017 OnStar. All rights reserved. Sirius, XM, SiriusXM and all related marks and logos are trademarks of Sirius XM Radio Inc. The Bluetooth word mark is a registered trademark owned by Bluetooth SIG, Inc., and any use of such mark by Chevrolet is under license. Bose is a registered trademark of the Bose Corp. Brembo is a registered trademark of Brembo S.p.A. RECARO is a registered trademark of RECARO GmbH & Co. Goodyear Eagle and SuperCar are registered trademarks of The Goodyear Tire & Rubber Company. ©2017 General Motors. All rights reserved. June 2017



**FIND *NEW* ROADS™**

**CHEVROLET.COM**