

CAMARO 2019

CHEVROLET





Front cover: Camaro 2SS Coupe in Riverside Blue Metallic with available features and Second Generation Ground Effects in Metallic Black from Chevrolet Accessories.
Left to right: Camaro ZL1 Coupe in Summit White and Camaro 2SS Coupe in Riverside Blue Metallic. Vehicles shown with available features.

**CELEBRATED BY
PEOPLE WHO KNOW.**

Always known for pure driving exhilaration and beautiful design, Camaro has never been more focused. The critics have taken note. "Camaros are among the most sophisticated driver's cars in the world," says *Car and Driver* in its 10Best issue for 2018, the third straight year Camaro has made the list. Why follow when you can lead?

FIND NEW ROADS™

Left to right: Camaro ZL1 Coupe in Summit White, Camaro 3LT Coupe in Red Hot with available 1LE Track Performance Package, Camaro 2SS Coupe in Riverside Blue Metallic, Camaro 3LT Convertible in Satin Steel Gray Metallic and Camaro 3LT Coupe in Garnet Red Tintcoat (extra-cost color). Vehicles shown with available features.

**SOME DECISIONS IN LIFE
ARE HARDER THAN OTHERS.**

NEW LOOKS MAKE EVERY ONE A WINNER.

Engineers have always given every Camaro a unique driving personality. Now each Camaro model has a unique look, including distinct fascias as well as new chiseled taillamps. No matter which model you select, your view of performance cars will never be the same.



LS COUPE

A LEGEND IN ANY SETTING.



Camaro LS Coupe in
Shadow Gray Metallic.

THE ESSENTIAL CAMARO. Each Camaro we build is an original, a true sports car in every respect. LS Coupe, the most affordable Camaro, is no exception, providing the looks, architecture, suspension, refinement and know-how that make people around the world stand up and take notice.

2.0L TURBO. LS Coupe is powered by a standard 275-horsepower 2.0L turbo. Its overall weight contributes to a desirable power-to-weight ratio, helping enable 0 to 60 mph in 5.4 seconds¹ as well as excellent grip and steering response.

DESIGN ENHANCEMENTS. LS Coupe benefits from new body lines for 2019 that include front and rear fascias with LED headlamps and chiseled taillamps plus a bolder, more contoured hood. The toned exterior provides better aerodynamic efficiency.

CAMARO LS COUPE

275-HORSEPOWER 2.0L TURBO ENGINE

6-SPEED MANUAL TRANSMISSION

AVAILABLE 8-SPEED PADDLE-SHIFT
AUTOMATIC TRANSMISSION

4-WHEEL INDEPENDENT SUSPENSION

DUAL-OUTLET STAINLESS STEEL EXHAUST
WITH POLISHED TIPS

CHEVROLET INFOTAINMENT 3
SYSTEM² WITH Apple CarPlay³ AND
ANDROID AUTO™⁴ COMPATIBILITY

¹Based on initial vehicle movement. Coupe models with 6-speed manual transmission. ²Full functionality requires compatible Bluetooth and smartphone, and USB connectivity for some devices. ³Vehicle user interface is a product of Apple and its terms and privacy statements apply. Requires compatible iPhone and data plan rates apply. ⁴Vehicle user interface is a product of Google and its terms and privacy statements apply. Requires the Android Auto app on Google Play and an Android compatible smartphone running Android 5.0 Lollipop or higher. Data plan rates apply.

LT

ACCELERATE YOUR GAME.

CAMARO LT

275-HORSEPOWER 2.0L TURBO ENGINE

AVAILABLE 335-HORSEPOWER 3.6L V6 ENGINE

6-SPEED MANUAL TRANSMISSION

AVAILABLE 8-SPEED PADDLE-SHIFT
AUTOMATIC TRANSMISSION

AVAILABLE RS PACKAGE

AVAILABLE 20-INCH WHEELS



Camaro 3LT Coupe in Garnet Red
Tintcoat (extra-cost color) with
available RS Package and other
available features.



Camaro 3LT Coupe in Garnet Red Tintcoat (extra-cost color) with available RS Package and other available features.

Camaro 3LT Coupe in Garnet Red Tintcoat (extra-cost color) with available RS Package and other available features.



CAMARO LT. Consider the possibilities. LT offers you a wide range of choices such as 20-inch wheels, heated and ventilated leather-appointed front seats, and even an available 3.6L V6 engine. If you want a navigation system, upgrade to 3LT, which includes a standard 3.6L V6 engine and other features.

2019 DESIGN ENHANCEMENTS. LT gets its own design language with a more toned, sculpted look that includes a new front fascia with LED headlamps, a more contoured hood and a new rear fascia with chiseled LED taillamps. You can also order a dual-mode performance exhaust system with twin outlets on each side.

RS PACKAGE ADDS AUTHORITY. Give your Camaro even more presence with the available RS Package. It includes 20-inch 5-split-spoke Gray-painted wheels, dark-lens LED taillamps, an RS-specific grille, a decklid-mounted spoiler and Black bowtie emblems.

CONVERTIBLE

THE FORECAST CALLS FOR BLUE SKIES AND INCREASING EUPHORIA.



Camaro 3LT Convertible in Satin Steel
Gray Metallic with available RS Package
and other available features.

DROP THE TOP. Some might say the ultimate sports car experience requires an open roof and a rush of fresh air. Camaro Convertible is available as an LT, SS or ZL1. For those days when you can't have the top down, the Convertible offers the same beautiful top-up profile as the Coupe.

FULLY AUTOMATIC OPERATION. With the push of a single button, a fully automatic soft top disappears beneath the hard tonneau cover — even at speeds up to 30 mph. You can also remotely lower the top while parked by using the key fob.

SS

MAKE NO MISTAKE. The Super Sport name evokes memories of 1967, the first year for Camaro. Beneath today's new dome-shaped hood with air extractor, you'll find a 455-horsepower 6.2L V8 engine. It propels you from 0 to 60 in 4.0 seconds¹ with the available 10-speed automatic transmission, and it can also save fuel by shutting down unneeded cylinders with available Active Fuel Management.[™]

ALWAYS IN THE RIGHT GEAR. The new available 10-speed paddle-shift automatic transmission helps maintain optimum rpm levels for maximum responsiveness on the road. Custom launch control keeps the rear tires spinning at the correct speed during launch and allows you to adjust both your launch rpm and wheel slippage through the Driver Information Center. A line lock feature lets you lock the front wheels to enable the rear wheels to spin, warming the tires for maximum grip on the drag strip.

BREMBO BRAKES. The high-performance 4-piston Brembo[®] brake system is capable of bringing Camaro SS Coupe from 60 mph to a complete stop in 117 feet.



CAMARO SS

455-HORSEPOWER 6.2L V8 ENGINE

6-SPEED MANUAL TRANSMISSION WITH
ACTIVE REV MATCHING

AVAILABLE 10-SPEED PADDLE-SHIFT
AUTOMATIC TRANSMISSION

LIMITED-SLIP DIFFERENTIAL

EXTRA-CAPACITY COOLING SYSTEM AND
REAR DIFFERENTIAL COOLER

THE EPICENTER OF CAMARO STILL MAKES THE EARTH SHAKE.

¹ Based on initial vehicle movement. Coupe models with available 10-speed automatic transmission.

Camaro 2SS Coupe in Riverside Blue
Metallic with available features.

Camaro 2SS Coupe in Riverside Blue Metallic with available features.



ENHANCED COOLING. Keeping 455 horsepower on track is an enhanced, extra-capacity engine cooling system. Even the standard limited-slip differential gets a special cooler to maintain optimum operating temperature.

MAGNETIC RIDE CONTROL. Available Magnetic Ride Control™ stiffens the suspension for high-performance driving while helping to maintain a smooth ride.

DUAL-MODE EXHAUST. This available performance exhaust system lets you open up the valves for a richer, full-bodied exhaust note in Sport and Track driving modes (Track mode is exclusive to LT models with the available 1LE Track Performance Package, SS and ZL1).



1

1. THE NEW FACE OF SS. Camaro SS is distinguished by a bold new appearance dominated by a blacked-out grille and newly shaped LED headlamps with a light bar, turn signals and daytime running lamps.



2

2. CHEVROLET FLOWTIE. Helping SS inhale even more air is a Chevrolet bowtie emblem with the center removed, allowing air to pass through it. During early testing, the flowtie helped increase airflow by nearly 3 cubic meters per minute, helping reduce underhood temperatures.



3

3. SS-EXCLUSIVE HOOD. A beautiful yet functional air extractor is the centerpiece of the SS dome-shaped hood. It pulls underhood air from the motor compartment to help with cooling and aerodynamics.

ZL1

650 HORSEPOWER. ZL1 is the reigning king of Camaro performance, thanks to its supercharged V8 engine, making it the most powerful production Camaro ever built. It also boasts a whopping 650 lb.-ft. of torque. Its foundation is the LT4 engine that helps enable a top track speed of 198 mph and a 0-to-60 mph time of 3.5 seconds.¹

MANAGING THE POWER. The robust ZL1 powertrain is controlled by standard equipment that includes Magnetic Ride Control dampers, an electronically controlled limited-slip differential, Brembo® brakes with 6-piston front calipers, and aerodynamic additions such as a platform wing and front and side splitters.

PUTTING THE POWER DOWN. On a closed-course drag strip, custom launch control keeps the rear tires spinning at the correct speed and allows you to adjust both your launch rpm and wheel slippage through the Driver Information Center. A line lock feature lets you lock the front wheels to enable the rear wheels to spin, warming the tires for maximum grip.

SHOCKS THAT READ THE ROAD. Magnetic Ride Control reads the road and changes damping in just 10-15 milliseconds in shocks filled with a magnetorheological fluid containing minute iron particles. An available Performance Traction Management system helps achieve faster transitions on the track.

Camaro ZL1 Coupe in Black with available features.

CAMARO ZL1

650-HORSEPOWER 6.2L SUPERCHARGED V8 ENGINE

6-SPEED MANUAL TRANSMISSION WITH ACTIVE REV MATCHING

AVAILABLE 10-SPEED PADDLE-SHIFT AUTOMATIC TRANSMISSION

6-PISTON FRONT, 4-PISTON REAR BREMBO® BRAKE CALIPERS

PERFORMANCE TRACTION MANAGEMENT (COUPE ONLY)



“The ZL1 is a supercar that looks like a Camaro.”

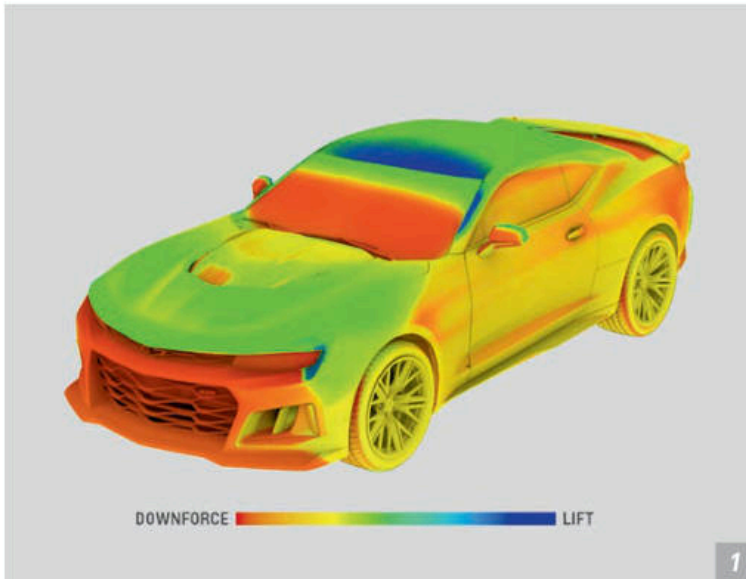
— Car and Driver

¹ Based on initial vehicle movement. Coupe models with available 10-speed paddle-shift automatic transmission.

*THE POWER TO BLUR
FANTASY AND REALITY.*



Camaro ZL1 Coupe in Black
with available features.



1. SHAPED FOR SPEED. Every surface of the ZL1 is designed for maximum downforce without compromising speed. Aerodynamic enhancements like a carbon-fiber hood air extractor, an air dam and a wing-style rear spoiler help reduce lift and increase downforce to keep ZL1 glued to the track.

2. INTEGRATED SUPERCHARGER. The LT4 supercharger is integrated into the intake manifold and fuel rail system for incredibly precise operation.

3. RECORD YOUR BEST LAPS. The available Performance Data Recorder logs videos of your drives, along with real-time performance data, onto an SD memory card so you can analyze your driving technique.

4. RECARO® PERFORMANCE SEATS. These bolstered front seats are ideal for high-g track driving and feature Jet Black leather appointments, Red accents and sueded microfiber inserts.



1LE TRACK PERFORMANCE PACKAGES



Left to right: Camaro SS Coupe in Satin Steel Gray Metallic, Camaro 3LT Coupe in Red Hot and Camaro ZL1 Coupe in Summit White. All vehicles shown with available 1LE Track Performance Packages and other features.

THE FAST WAY TO FASTER LAP TIMES.

¹ Do not use summer-only tires in winter conditions, as it would adversely affect vehicle safety, performance and durability. Use only GM-approved tire and wheel combinations. Unapproved combinations may change the vehicle's performance characteristics. For important tire and wheel information, go to my.chevrolet.com/learnAbout/chevrolettires or see your dealer.

THE ULTIMATE TRACK PACKAGE.

It started as an option package to make third-generation Camaro race cars more competitive in showroom stock classes. Since then, 1LE has developed into a comprehensive track performance package that's available on LT, SS and ZL1. You'll recognize 1LE by its distinct Black hood and special spoilers.

TURBO 1LE. A 1LE Track Performance Package is now available on LT with the 2.0L turbo engine, providing advantages for drivers who crave lower mass and


better weight distribution. The package includes FE3 suspension components, heavy-duty cooling, Brembo® 4-piston brake calipers, 20-inch Black forged-aluminum wheels and summer-only tires! There's also a unique 3-piece spoiler, an enhanced fuel system for higher cornering loads, a Driver Mode Selector that includes Track Mode, and available RECARO® performance seats.

V6 1LE. If you seek more horsepower in the form of a 335-horsepower V6 engine, the V6 1LE is for you. It includes all the

basics of the Turbo 1LE plus a dual-mode exhaust. With its aggressive suspension tuning, V6 1LE delivers an estimated 0.97 g in cornering grip for consistent lap times on the track.

SS 1LE. V8 engine fans will favor the 455-horsepower SS 1LE. The FE4 chassis system includes Magnetic Ride Control dampers, plus special springs and stabilizer bars. With an Electronic Limited-Slip Differential, Brembo 6-piston front brake calipers and Goodyear Eagle® F1 SuperCar® summer-only tires, it exceeds 1 g on the skid pad.

ZL1 1LE. The most extreme production Camaro ever, ZL1 1LE is designed for track day setups with the ability to readjust for the ride home. Besides its LT4 supercharged V8 engine, ZL1 1LE includes adjustable front camber and ride height of the Multimatic DSSV™ dampers, as well as an adjustable rear stabilizer bar and a fixed carbon-fiber rear wing. Dive planes on the edges of the front fascia help maintain traction and turn-in.



INTERIOR DESIGN

Camaro 3LT interior in Jet Black with available Ceramic White Interior Accent Trim Package and other available features.

PRECISE COMFORT IN EVERY DETAIL.

Everything comes together seamlessly to provide a better connection with the road. The Camaro cockpit includes premium materials throughout. Drivers will appreciate the flat-bottom steering wheel and perfectly placed gear shifter and dead pedal as well as aggressively

bolstered seats. Leather-trimmed seating surfaces and heated and ventilated front seats are also available. Console air vent trim rings offer simple, space-efficient dials for temperature control. There's also a convenient bank of heat and air conditioning controls located just above the shifter.

RECARO® PERFORMANCE SEATS.

If you seek a more deeply contoured sport seat, available RECARO performance seats offer sueded microfiber inserts as well as Jet Black leather appointments and Red accents.

TECHNOLOGY



EXPAND YOUR CONNECTIVITY. Camaro performance gets a new dimension with a next-generation Chevrolet Infotainment 3 System¹! This features an available 8-inch diagonal high-definition color touch-screen on select models. The new system provides Bluetooth^{®2} capability for two users as well as the ability to create multiple user profiles.

Apple CarPlay COMPATIBILITY. With Apple CarPlay,³ you can simply and smartly connect with some of your most used iPhone[®] features, including Maps, Music, Messages and Phone, right on your touch-screen display.

EASY ANDROID CONNECTION. With Android Auto^{™4} compatibility, you can interact with select smartphone apps. This system takes some of your compatible Android[™] phone's features and lets you access them on the touch-screen display. You can access your phone, text messages, music, navigation and more.

BOSE PREMIUM SOUND. A Bose premium 9-speaker system for Coupe (7-speaker system for Convertible) is standard on 3LT, 2SS and ZL1, and is available on 1LT and 2LT.

¹ Chevrolet Infotainment System functionality varies by model. Full functionality requires compatible Bluetooth and smartphone and USB connectivity for some devices. ² Visit mychevrolet.com for vehicle and smartphone compatibility. ³ Vehicle user interface is a product of Apple and its terms and privacy statements apply. Requires compatible iPhone and data plan rates apply. ⁴ Vehicle user interface is a product of Google and its terms and privacy statements apply. Requires the Android Auto app on Google Play and an Android compatible smartphone running Android 5.0 Lollipop or higher. Data plan rates apply.

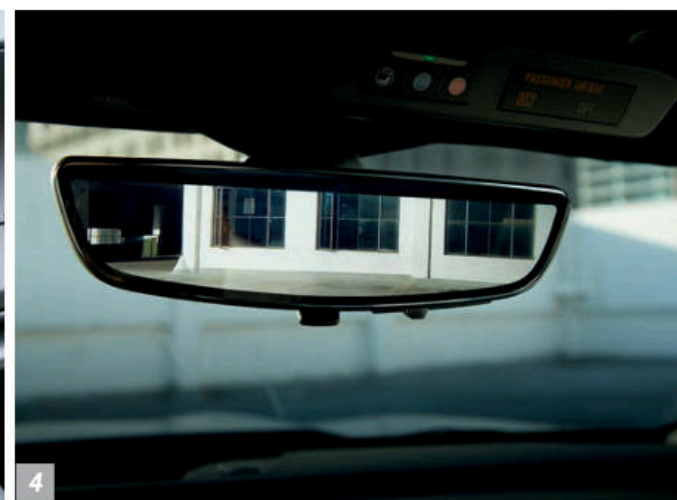
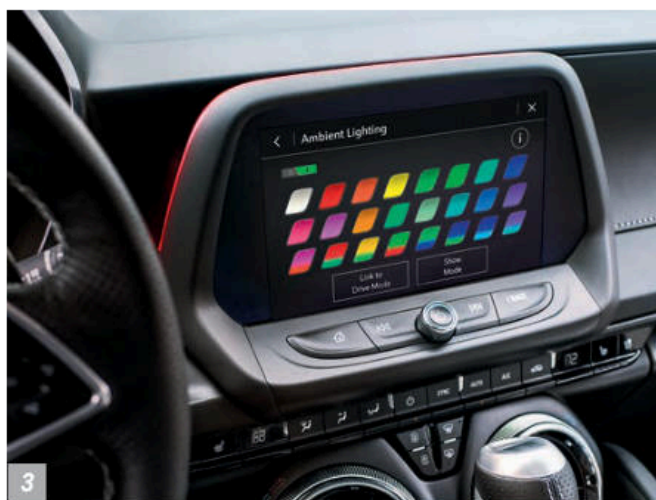
Apple CarPlay and iPhone are trademarks of Apple Inc., registered in the U.S. and other countries. Android, Android Auto, Google, Google Play and other marks are trademarks of Google LLC.

1. CONFIGURABLE DRIVER INFORMATION CENTER. An available 8-inch diagonal configurable gauge cluster allows you to monitor information such as lap time, g-force cornering, fuel usage/range, tire pressure and operating temperature.

2. COLOR HEAD-UP DISPLAY. Standard on 2SS and ZL1 and available on 3LT, the Head-Up Display projects vehicle speed, rpm, fuel level and other information onto the windshield so you can keep your eyes on the road.

3. INTERIOR SPECTRUM LIGHTING. Standard on 2SS and ZL1 and available on 3LT, this system provides a band of light that courses around the radio, door trim and cup holders, transitioning between 24 selectable colors.

4. A WIDE VIEW BEHIND YOU. Standard on 2SS and ZL1¹ is a Rear Camera Mirror² that provides a less obstructed view of the area behind your Camaro. When turned on, the mirror provides the driver a wide view without the obstruction of head restraints, C-pillars and rear-seat passengers or cargo.



¹ Not available on models with 1LE Track Performance Packages. ² Safety or driver assistance features are no substitute for the driver's responsibility to operate the vehicle in a safe manner. The driver should remain attentive to traffic, surroundings and road conditions at all times. Visibility, weather and road conditions may affect feature performance. Read the vehicle Owner's Manual for more important feature limitations and information. ³ Not available with Performance Data Recorder or on Convertible models.

WE'RE SERIOUS ABOUT SAFETY.



AVAILABLE CAMARO SAFETY FEATURES.
Standard on 2SS and ZL1 and available on 3LT, Forward Collision Alert^{2,3} Rear Cross Traffic Alert² Lane Change Alert with Side Blind Zone Alert² and Rear Park Assist² are all designed to alert the driver.

Camaro 2SS Coupe in Riverside Blue Metallic with available features.

TRANSMISSIONS

Camaro ZL1 Coupe in Black with available features.

SHIFT GEARS ON YOUR TERMS.



10-SPEED PADDLE-SHIFT AUTOMATIC.
Camaro SS now offers a 10-speed paddle-shift automatic transmission. Similar to the version available on ZL1, it delivers nearly instantaneous shifts.

CUSTOM LAUNCH CONTROL.
This technology, included with the available 10-speed automatic, allows

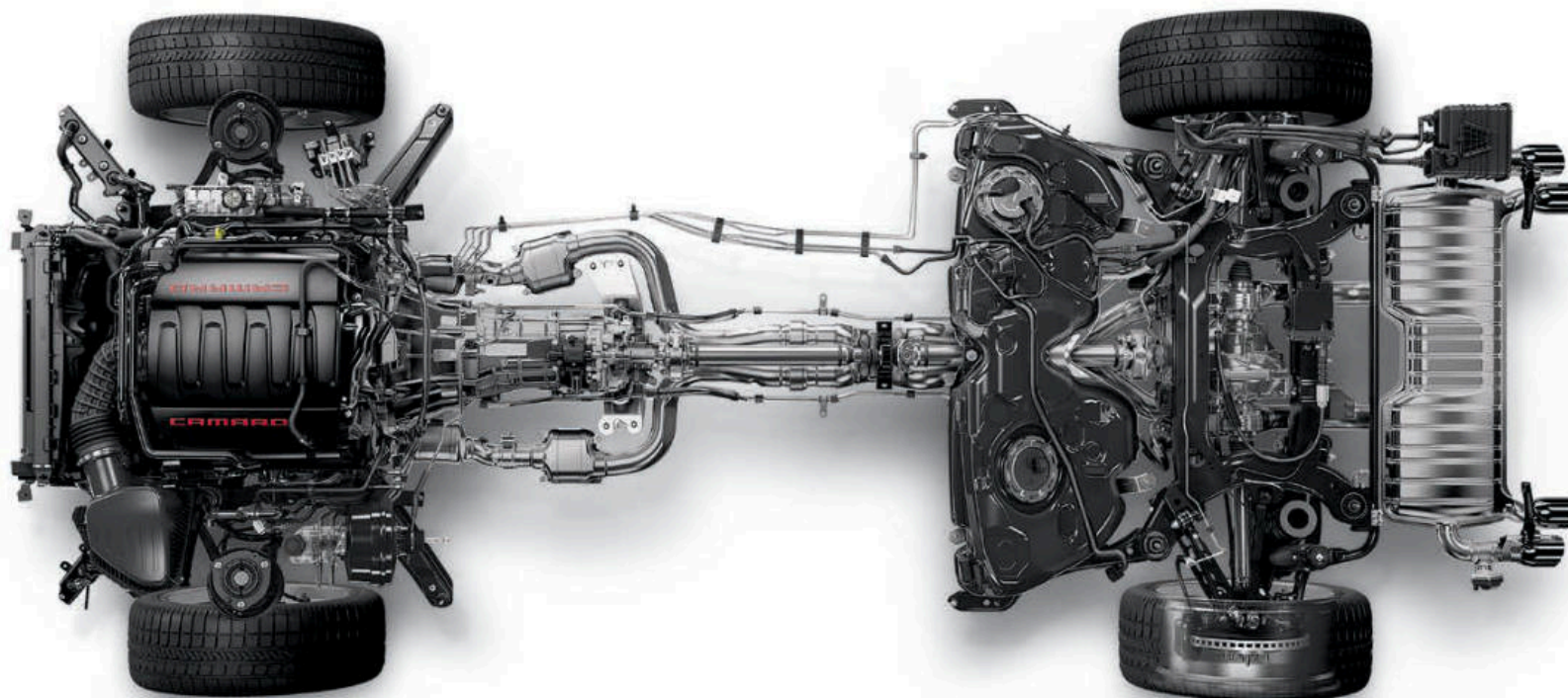
you to adjust both the launch rpm and rear wheel slippage through the Driver Information Center (with a new brake pressure bar graphic to assist in operation). On a closed-course drag strip, line lock lets you lock the front wheels to enable the rear tires to heat up by spinning against the pavement for maximum grip during a run.

AVAILABLE 8-SPEED PADDLE-SHIFT AUTOMATIC TRANSMISSION.
This transmission is available on LS and LT and includes Active Fuel Management on V6 models.

STANDARD 6-SPEED MANUAL.
Experience the joy of manual shifting on the open road. SS and ZL1 also include

Active Rev Matching, which anticipates downshifts with throttle blips for smooth, precise shifting. The shift knob is wrapped with dimpled leather or sueded microfiber on ZL1 and SS 1LE for an ideal grip.

CHASSIS/POWERTRAIN



MULTILINK FRONT SUSPENSION.

Featuring aluminum components and MacPherson struts, this suspension is engineered for precision at every turn.

BREMBO® 4-WHEEL DISC BRAKES.

Track-tested 4-piston front and rear calipers are standard on SS. ZL1 has 6-piston front and 4-piston rear calipers.

HEAVY-DUTY COOLING AND BRAKE

PACKAGE. Make your Camaro more robust with this available package that includes an external engine oil cooler, an extra-capacity cooling system, and

4-piston Brembo performance front brake calipers on LS and LT. Models equipped with the 2.0L turbo engine get an auxiliary engine cooler.

PRECISE ELECTRIC POWER STEERING.

Elevate road feel and response with Electric Power Steering. You can select up to four drive modes. Quick steering ratios contribute to a nimble, controlled feeling with every turn of the wheel.

INDEPENDENT REAR SUSPENSION.

Tuned specifically for each Camaro model, the independent rear suspension

provides a refined ride and responsive driving dynamics.

MAGNETIC RIDE CONTROL. Standard on ZL1 and available on SS, this system reads the road every millisecond. It then changes damping in just 10 to 15 milliseconds in shocks filled with magnetorheological fluid containing minute iron particles.

ELECTRONIC LIMITED-SLIP

DIFFERENTIAL. Available on SS Coupe and standard on ZL1 Coupe, the Electronic Limited-Slip Differential

continuously modulates torque split to improve traction and acceleration out of corners, enhancing stability and turn-in responsiveness. A mechanical limited-slip differential is standard on LS, LT and SS.

DUAL-MODE EXHAUST. Standard on ZL1 and available on SS and LT with the available 3.6L V6 engine, the dual-mode exhaust provides a more aggressive exhaust note in Sport and Track modes (Track mode is exclusive to LT models with the available 1LE Track Performance Package, SS and ZL1).

SPECIAL FEATURES



20" 5-Split-Spoke Satin Black Wheel available from Chevrolet Accessories.



Black Lower Grille with Red Hot-Painted Inserts available from Chevrolet Accessories.



Second Generation Ground Effects in Mosaic Black Metallic and Hood Stripe in Satin Black with Silver Ice Metallic Hash Mark available from Chevrolet Accessories.

WHEELS



5-Split-Spoke Silver-Painted Aluminum
18" x 8.5" Front and Rear on LS Coupe



5-Spoke Silver-Painted Aluminum
18" x 8.5" Front and Rear on LT



5-Spoke Carbon Flash-Painted Aluminum
20" x 8.5" Front and Rear on LT
20" x 8.5" Front and 20" x 9.5" Rear on SS
SS wheels paired with summer-only tires¹



5-Split-Spoke Bright Silver-Painted Aluminum
20" x 8.5" Front and Rear on LT²
20" x 8.5" Front and 20" x 9.5" Rear on SS
SS wheels paired with summer-only tires¹



5-Split-Spoke Premium Gray-Painted
Machined-Face Aluminum
20" x 8.5" Front and Rear on LT²
20" x 8.5" Front and 20" x 9.5" Rear on SS
SS wheels paired with summer-only tires¹



5-Spoke Bright Silver-Painted Aluminum
20" x 8.5" Front and 20" x 9.5" Rear on SS
paired with summer-only tires¹



10-Split-Spoke Dark Graphite-Painted Forged-Aluminum
20" x 10" Front and 20" x 11" Rear on ZL1
paired with summer-only tires¹



5-Split-Spoke Black-Painted Forged-Aluminum³
20" x 8.5" Front and 20" x 9.5" Rear on LT 1LE
paired with summer-only tires¹



5-Split-Spoke Satin Graphite Forged-Aluminum³
20" x 10" Front and 20" x 11" Rear on SS 1LE
paired with summer-only tires¹



5-Split-Spoke Low-Gloss Black-Painted Forged-Aluminum⁴
19" x 11" Front and 19" x 12" Rear on ZL1 1LE
paired with summer-only tires¹

¹ Do not use summer-only tires in winter conditions, as it would adversely affect vehicle safety, performance and durability. Use only GM-approved tire and wheel combinations. Unapproved combinations may change the vehicle's performance characteristics. For important tire and wheel information, go to my.chevrolet.com/learnAbout/chevrolettires or see your dealer. ² Requires available RS Package. ³ Requires available 1LE Track Performance Package. ⁴ Requires available ZL1 1LE Extreme Track Package.

COLORS



SUMMIT WHITE



SILVER ICE METALLIC



SATIN STEEL GRAY METALLIC



SHADOW GRAY METALLIC



CRUSH¹



RED HOT



GARNET RED TINTCOAT¹



SHOCK^{1,2}



RIVERSIDE BLUE METALLIC

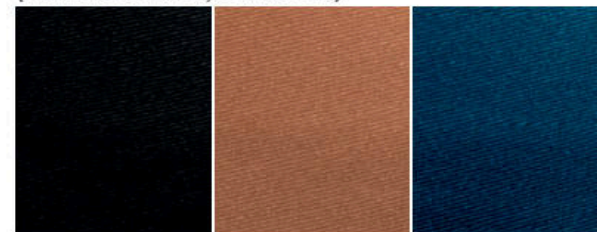


MOSAIC BLACK METALLIC



BLACK

CONVERTIBLE TOP COLORS (AVAILABLE ON LT, SS AND ZL1)



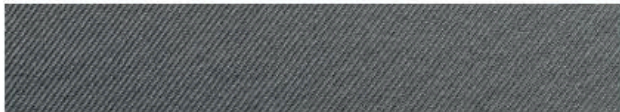
Black

Kalahari³

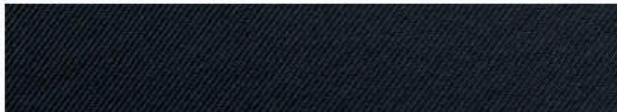
Blue³

¹ Extra-cost color. ² Late availability. ³ Not available on ZL1.

FABRICS



Medium Ash Gray Cloth¹



Jet Black Cloth¹



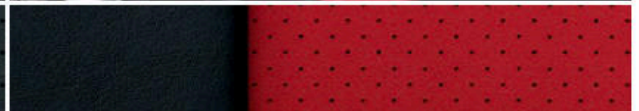
Ceramic White Leather Seating Surfaces²



Medium Ash Gray Leather Seating Surfaces³



Jet Black Leather Seating Surfaces³



Adrenaline Red Leather Seating Surfaces⁴



Kalahari Leather Seating Surfaces⁵



RECARO[®] Performance Seats with Jet Black Leather Appointments and Sueded Microfiber Inserts⁵



RECARO Performance Seats with Jet Black Leather Appointments and Red Accents and Sueded Microfiber Inserts⁵

¹ Standard on 1LS, 1LT and 1SS. ² Available on 3LT and 2SS with Ceramic White Interior Accent Trim Package. Requires Convenience and Lighting Package on 3LT. ³ Standard on 2LT, 3LT and 2SS. ⁴ Available on 3LT and 2SS with Adrenaline Red Interior Accent Trim Package. Requires Convenience and Lighting Package on 3LT. ⁵ Requires available 1LE Track Performance Package on 1LT, 2LT and 3LT. Available on 1SS and 2SS. ⁶ Standard on ZL1.

PERFORMANCE

	CAMARO LS/LT/TURBO 1LE	CAMARO LT/V6 1LE	CAMARO SS/SS 1LE	CAMARO ZL1	CAMARO ZL1 1LE EXTREME TRACK PACKAGE
ENGINE	2.0L turbocharged 4-cylinder	3.6L V6	6.2L LT1 V8	6.2L LT4 supercharged V8	6.2L LT4 supercharged V8
BORE AND STROKE	86.00 mm x 86.00 mm	95.00 mm x 85.60 mm	103.25 mm x 92.00 mm	103.25 mm x 92.00 mm	103.25 mm x 92.00 mm
COMPRESSION RATIO	9.5:1	11.5:1	11.5:1	10.0:1	10.0:1
HORSEPOWER	275 hp @ 5600 rpm	335 hp @ 6800 rpm	455 hp @ 6000 rpm	650 hp @ 6400 rpm	650 hp @ 6400 rpm
TORQUE	295 lb.-ft. @ 3000-4500 rpm	284 lb.-ft. @ 5300 rpm	455 lb.-ft. @ 4400 rpm	650 lb.-ft. @ 3600 rpm	650 lb.-ft. @ 3600 rpm
REDLINE	7000 rpm	7200 rpm	6500 rpm	6600 rpm	6600 rpm
AXLE RATIO	3.27:1 (manual) 3.27:1 (automatic)	2.77:1 (automatic) 3.27:1 (manual)	2.77:1 (automatic) 3.73:1 (manual and SS 1LE)	3.73:1 (manual) 2.85:1 (automatic Coupe) 2.77:1 (automatic Convertible)	3.73:1
0 TO 60 (BASED ON INITIAL VEHICLE MOVEMENT)	5.5 seconds (automatic Coupe) 5.6 seconds (manual Convertible) 5.7 seconds (automatic Convertible) 5.4 seconds (manual Coupe and Turbo 1LE)	5.1 seconds (automatic Coupe) 5.4 seconds (manual Convertible) 5.3 seconds (automatic Convertible) 5.2 seconds (manual Coupe and V6 1LE)	4.3 seconds (manual Coupe) 4.0 seconds (automatic Coupe) 4.5 seconds (manual Convertible) 4.2 seconds (automatic Convertible and SS 1LE)	3.7 seconds (manual Coupe) 3.5 seconds (automatic Coupe) 3.9 seconds (manual Convertible) 3.7 seconds (automatic Convertible)	3.7 seconds
QUARTER MILE	14.0 seconds @ 100 mph (manual Coupe and Turbo 1LE) 14.0 seconds @ 99 mph (automatic Coupe) 14.2 seconds @ 99 mph (manual Convertible) 14.2 seconds @ 98 mph (automatic Convertible)	13.5 seconds @ 103 mph (automatic Coupe) 13.9 seconds @ 101 mph (manual Convertible) 13.7 seconds @ 102 mph (automatic Convertible) 13.7 seconds @ 102 mph (manual Coupe and V6 1LE)	12.3 seconds @ 116 mph (automatic Coupe) 12.7 seconds @ 114 mph (manual Convertible) 12.5 seconds @ 115 mph (automatic Convertible) 12.5 seconds @ 115 mph (manual Coupe and SS 1LE)	11.8 seconds @ 125 mph (manual Coupe) 11.4 seconds @ 127 mph (automatic Coupe) 12.0 seconds @ 124 mph (manual Convertible) 11.6 seconds @ 126 mph (automatic Convertible)	11.8 seconds @ 125 mph
SKID PAD (MAXIMUM LATERAL ACCELERATION)	0.85 g 0.97 g (Turbo 1LE)	0.89 g 0.97 g (V6 1LE)	0.97 g (Coupe) 0.95 g (Convertible) 1.02 g (SS 1LE)	1.02 g (Coupe) 1.00 g (Convertible)	1.10 g
TOP TRACK SPEED	149 mph 148 mph (Turbo 1LE)	149 mph 155 mph (V6 1LE)	180 mph (Coupe) 155 mph (Convertible) 175 mph (SS 1LE)	198 mph (automatic Coupe)	191 mph
BRAKING SYSTEM	4-wheel antilock, 4-wheel disc Available: Brembo® 4-piston front, performance	4-wheel antilock, 4-wheel disc Available: Brembo 4-piston front, performance	4-wheel antilock, 4-wheel disc, Brembo 4-piston front and rear, performance 4-wheel antilock, 4-wheel disc, Brembo 6-piston monobloc front and 4-piston rear, performance (SS 1LE)	4-wheel antilock, 4-wheel disc, Brembo 6-piston monobloc front and 4-piston rear, performance	
BRAKING DISTANCE (60 TO 0 MPH)	129 ft.	124 ft. (Coupe with available RS Package) 127 ft. (Convertible) 112 ft. (V6 1LE)	117 ft. (Coupe) 120 ft. (Convertible) 107 ft. (SS 1LE)	107 ft. (Coupe) 110 ft. (Convertible)	101 ft.
CURB WEIGHT	3,354 lbs. (manual Coupe) 3,339 lbs. (automatic Coupe) 3,647 lbs. (manual Convertible) 3,627 lbs. (automatic Convertible)	3,448 lbs. (manual Coupe) 3,435 lbs. (automatic Coupe) 3,715 lbs. (manual Convertible) 3,709 lbs. (automatic Convertible) 3,490 lbs. (V6 1LE)	3,685 lbs. (manual Coupe) 3,697 lbs. (automatic Coupe) 3,956 lbs. (manual Convertible) 3,969 lbs. (automatic Convertible) 3,754 lbs. (SS 1LE)	3,883 lbs. (manual Coupe) 3,944 lbs. (automatic Coupe) 4,113 lbs. (manual Convertible) 4,148 lbs. (automatic Convertible)	3,823 lbs.
WHEELS	18" Silver-painted aluminum	18" Silver-painted aluminum 20" 5-split-spoke forged-aluminum (20" x 8.5" front and 20" x 9.5" rear) (V6 1LE)	20" 5-spoke Bright Silver-painted aluminum (20" x 8.5" front and 20" x 9.5" rear) 20" 5-split-spoke forged-aluminum (20" x 10" front and 20" x 11" rear) (SS 1LE)	20" 10-split-spoke forged-aluminum (20" x 10" front and 20" x 11" rear)	19" 5-split-spoke low-gloss Black-painted forged-aluminum (19" x 11" front and 19" x 12" rear)
TIRES	245/50R18 all-season blackwall	245/50R18 all-season blackwall 245/40ZR20 front and 275/35ZR20 rear, summer-only ¹ blackwall, run-flat (V6 1LE)	245/40ZR20 front and 275/35ZR20 rear, summer-only ¹ blackwall, run-flat 285/30R20 front and 305/30R20 rear, summer-only ¹ blackwall (SS 1LE)	285/30R20 front and 305/30R20 rear, summer-only ¹ blackwall	Goodyear Eagle® F1 SuperCar® 3R 305/30R19 (front) and 325/30R19 (rear) summer-only ^{1,2} blackwall
WEIGHT DISTRIBUTION (F/R)	52/48	52/48	54/46	54/46	54/46

¹ Do not use summer-only tires in winter conditions, as it would adversely affect vehicle safety, performance and durability. Use only GM-approved tire and wheel combinations. Unapproved combinations may change the vehicle's performance characteristics. For important tire and wheel information, go to my.chevrolet.com/learnAbout/chevrolettires or see your dealer. ² Driving on wet roads, in heavy rain, or through standing water with competition-oriented tires may cause hydroplaning and loss of control. Use extreme caution and drive slowly on wet roads.

SELECT VEHICLE FEATURES

CAMARO LS COUPE

2.0L 275-hp turbocharged 4-cylinder engine with Direct Injection and Variable Valve Timing

6-speed manual transmission

Dual-outlet stainless steel exhaust with bright tips

Driver Mode Selector with 3 modes: Snow/Ice, Tour and Sport

1 month of OnStar Safety & Security coverage¹, which includes Automatic Crash Response, Emergency Services, Stolen Vehicle Assistance, Roadside Assistance and Turn-by-Turn Navigation²

StabiliTrak[®] Electronic Stability Control System with Traction Control

LED daytime running lamps

Teen Driver technology

Rear vision camera³

18" x 8.5" 5-split-spoke Silver-painted aluminum wheels

Keyless Open and Start

Chevrolet Infotainment 3 System⁴ with 7-inch diagonal color touch-screen display, featuring Android Auto⁵ and Apple CarPlay[®] compatibility

Auxiliary input jack and 2 USB ports⁷

Bluetooth[®] wireless technology⁸ for select phones

Driver Information Center with color display

Leather-wrapped flat-bottom steering wheel with steering wheel-mounted controls for audio and cruise

Front sport buckets with 8-way power driver-seat adjuster and 4-way passenger-seat adjuster with power recline

Single-zone air conditioning

Front reading lamps and interior dome lamp with illuminated entry

Power windows and programmable power door locks

Chevrolet Connected Access⁹ with 10 years of standard connectivity, which currently includes Vehicle Diagnostics and Dealer Maintenance Notification

CAMARO 1LT In addition to or replacing LS Coupe features, 1LT includes:

18" x 8.5" 5-spoke Silver-painted aluminum wheels

SiriusXM[®] Radio¹⁰ All Access Package with 12-month trial subscription

6-way power passenger-seat adjuster

CAMARO 2LT In addition to or replacing 1LT features, 2LT includes:

Dual-zone automatic climate control with individual climate settings for driver and front passenger, dedicated passenger controls and outside temperature display

Heated and ventilated leather-trimmed seats for driver and front passenger

CAMARO 3LT In addition to or replacing 2LT features, 3LT includes:

3.6L 335-hp V6 engine with Direct Injection and Variable Valve Timing

Chevrolet Infotainment 3 Premium System⁴ with Navigation and 8-inch diagonal HD color touch-screen display, featuring connected navigation and cloud-connected personalization for select infotainment and vehicle settings

Bose premium 9-speaker (Coupe) or 7-speaker (Convertible) audio system

Frameless, auto-dimming inside rearview mirror

CAMARO 1SS In addition to or replacing 1LT features, 1SS includes:

6.2L 455-hp V8 engine with Direct Injection and Variable Valve Timing

Limited-slip rear differential

Brembo performance 4-wheel disc brakes with ABS, 4-piston front and rear

LED headlamps with LED signature and automatic exterior lamp control and LED daytime running lamps

20" 5-spoke Bright Silver-painted aluminum wheels (20" x 8.5" front, 20" x 9.5" rear)

Enhanced Driver Information Center with 8-inch diagonal reconfigurable color display

Driver Mode Selector with 4 modes: Snow/Ice, Tour, Sport and Track

Chevrolet Infotainment 3 Plus System⁴ with 8-inch diagonal HD color touch-screen display, featuring cloud-connected personalization for select infotainment and vehicle settings

CAMARO 2SS In addition to or replacing 1SS features, 2SS includes:

Forward Collision Alert¹; Rear Park Assist²; Rear Cross Traffic Alert²; and Lane Change Alert with Side Blind Zone Alert³

Rear Camera Mirror³

Head-Up Display with color digital readouts for vehicle speed, selected gear, g force, audio system information, high beam indicator, compass, outside air temperature, turn signals, tachometer, vehicle messages, turn-by-turn navigation information and phone information

Bose premium 9-speaker (Coupe) or 7-speaker (Convertible) audio system

Interior spectrum lighting with 24 different color selections

Memory Package: 2-position memory for 8-way power driver seat and outside mirrors

Dual-zone automatic climate control with individual climate settings for driver and front passenger, dedicated passenger controls and outside temperature display

Heated and ventilated leather-trimmed seats for driver and front passenger

Heated steering wheel

Aluminum accents on door trim and shifter cap

Illuminated doorsill plates

CAMARO ZL1 In addition to or replacing 2SS features, ZL1 includes:

6.2L 650-hp supercharged V8 engine with Direct Injection and Variable Valve Timing

Launch control

Electronic Limited-Slip Differential (Coupe only)

Magnetic Ride Control suspension

Dual-mode performance exhaust system

Brembo performance 4-wheel disc brakes with ABS, 6-piston front and 4-piston rear

20" 10-split-spoke Dark Graphite-painted forged-aluminum wheels (20" x 10" front, 20" x 11" rear)

RECARO[®] performance seats with Jet Black leather appointments and Red accents and sueded microfiber inserts

Sueded microfiber-wrapped steering wheel and shifter

Sport alloy pedals

Wireless charging¹¹

¹ OnStar plan, working electrical system, cell reception and GPS signal required. OnStar links to emergency services. Roadside services provided by Allstate Roadside Services for vehicles only. Limitations and restrictions apply. Stolen Vehicle Assistance requires armed GM factory-installed theft-deterrent system, contact method on file and enrollment to receive alerts. Additional messaging and data rates may apply. Services are intended to assist with vehicle recovery and do not prevent theft or protect against damage or loss. Visit onstar.com for details and limitations. ² Advisor-based Turn-by-Turn Navigation is subject to User Terms and limitations, and varies by vehicle model. Map coverage available in the United States, Puerto Rico and Canada. ³ Read the vehicle Owner's Manual for important feature limitations and information. ⁴ Chevrolet Infotainment System functionality varies by model. Full functionality requires compatible Bluetooth and smartphone, and USB connectivity for some devices. Map coverage available in the United States, Puerto Rico and Canada. ⁵ Vehicle user interface is a product of Google and its terms and privacy statements apply. Requires the Android Auto app on Google Play and an Android compatible smartphone running Android 5.0 Lollipop or higher. Data plan rates apply. ⁶ Vehicle user interface is a product of Apple and its terms and privacy statements apply. Requires compatible iPhone and data plan rates apply. ⁷ Not compatible with all devices. ⁸ Visit my.chevrolet.com/learn for vehicle and smartphone compatibility. ⁹ Standard connectivity available only to original purchaser for 10 years. Connected Access services are subject to change. Does not include emergency or security services. Diagnostic capabilities vary by model and service plan. Message and data rates may apply. Requires contact method on file and enrollment to receive alerts. Not all issues will deliver alerts. Visit onstar.com for details and limitations. ¹⁰ If you decide to continue service after your trial, the subscription plan you choose will automatically renew thereafter and you will be charged according to your chosen payment method at then-current rates. Fees and taxes apply. To cancel you must call SiriusXM at 1-866-635-2349. See SiriusXM Customer Agreement for complete terms at siriusxm.com. All fees and programming subject to change. ¹¹ The system wirelessly charges one PMA- or Qi-compatible mobile device. Some devices require an adaptor or back cover. To check for phone or other device compatibility, visit my.chevrolet.com/learn for details.

SPECIFICATIONS

● STANDARD ○ AVAILABLE – NOT AVAILABLE

	LSCOUPE	1LT	2LT	3LT	1SS	2SS	ZL1
EXTERIOR							
Headlamps: LED projector-style, automatic	–	○ ¹	○ ¹	○ ¹	●	●	●
Mirrors: Power-adjustable, body-color	●	●	●	–	●	–	–
Heated, power-adjustable, body-color, with driver-side auto-dimming feature	–	–	–	○ ²	–	●	●
Spoiler: Lip, decklid-mounted	–	○ ³	○ ³	○ ³	–	–	–
Stanchion	–	○ ⁴	○ ⁴	○ ⁴	●	●	●
Exposed carbon-fiber-weave hood insert	–	–	–	–	–	–	○ ⁵
GRAPHICS							
Black Center Stripe (not available with Black)	○	○	○	○	–	–	–
Black Metallic Center Stripe (not available with Mosaic Black Metallic)	–	–	–	–	○	○	○ ^{6,7}
Silver Center Stripe (not available with Silver Ice Metallic)	○	○	○	○	○	○	–
White Pearl Center Stripe (not available with Summit White)	○	○	○	○	○	○	–
Black Rally Stripes (not available with Black)	○	○	○	○	–	–	–
Black Metallic Rally Stripes (not available with Mosaic Black Metallic)	–	–	–	–	○	○	–
Silver Rally Stripes (not available with Silver Ice Metallic)	○	○	○	○	○	○	–
White Pearl Rally Stripes (not available with Summit White)	○	○	○	○	○	○	–
ENGINE/CHASSIS							
Brakes: 4-wheel antilock disc	●	●	●	●	●	●	●
Brembo® 4-piston front, performance	–	○ ⁸	○ ⁸	○ ⁸	–	–	–
Brembo 4-piston front and rear, performance	–	–	–	–	●	●	–
Brembo 6-piston monobloc front, 4-piston rear, performance	–	–	–	–	○ ⁹	○ ⁹	●
Cooling system: Extra-capacity	–	○ ⁸	○ ⁸	○ ⁸	●	●	●
Differential: Limited-slip	●	●	●	●	●	●	–
Electronic Limited-Slip (eLSD)	–	–	–	–	○ ⁹	○ ⁹	○ ¹⁰
Rear differential cooler	–	○ ¹¹	○ ¹¹	○ ¹¹	●	●	●
Engine: 2.0L turbocharged 4-cylinder; 275 hp and 295 lb.-ft. of torque	●	●	●	○	–	–	–
3.6L V6; 335 hp and 284 lb.-ft. of torque	–	○	○	●	–	–	–
6.2L LT1 V8; 455 hp and 455 lb.-ft. of torque	–	–	–	–	●	●	–
6.2L LT4 supercharged V8; 650 hp and 650 lb.-ft. of torque	–	–	–	–	–	–	●
Auxiliary engine coolant cooler	–	○ ^{10,12}	○ ^{10,12}	○ ^{10,12}	○ ¹⁰	● ¹⁰	●
External engine oil cooler	–	○ ^{5,10}	○ ^{5,10}	○ ^{5,10}	●	●	●
Exhaust system: Dual-outlet stainless steel with polished tips	●	●	●	●	●	●	–
Dual-mode performance with quad outlets	–	○ ¹³	○ ¹³	○ ^{13,14}	○	○	●

	LSCOUPE	1LT	2LT	3LT	1SS	2SS	ZL1
ENGINE/CHASSIS (CONTINUED)							
4-wheel independent suspension: Sport Performance	●	●	●	●	–	–	–
Performance with Multimatic DSSV™ (Dynamic Suspension Spool Valve) dampers	–	○ ¹¹	○ ¹¹	○ ¹¹	●	●	○ ¹⁵
Magnetic Ride Control	–	–	–	–	○	○	● ¹⁶
Transmission: 6-speed manual with Hill Hold feature	●	●	●	●	● ¹⁷	● ¹⁷	● ¹⁷
8-speed paddle-shift automatic	○	○ ^{18,19}	○ ^{18,19}	○ ^{18,20}	–	–	–
10-speed paddle-shift automatic	–	–	–	–	○ ²⁰	○ ²⁰	○ ^{16,20}
Transmission oil cooler	–	○ ²¹	○ ²¹	○ ²¹	●	●	●
SAFETY & SECURITY							
Airbags: ²² Dual-stage frontal and knee for driver and front passenger, includes Passenger Sensing System (Coupe/Convertible); seat-mounted side-impact for driver and front passenger (thorax/head for Convertible); head-curtain for all outboard seating positions (Coupe only)	●	●	●	●	●	●	●
Forward Collision Alert ²³	–	–	–	○ ^{2,24}	–	● ²⁴	● ²⁴
Lane Change Alert with Side Blind Zone Alert ²³	–	–	–	○ ²	–	●	●
Rear Park Assist ²³	–	–	–	○ ²	–	●	●
Rear Cross Traffic Alert ²³	–	–	–	○ ²	–	●	●
INTERIOR							
Air conditioning: Single-zone automatic climate control	●	●	–	–	●	–	–
Dual-zone automatic climate control with dedicated passenger controls	–	–	●	●	–	●	●
Carbon-fiber instrument panel molding	–	–	–	–	–	–	○
Driver Information Center (DIC): Color	●	●	●	●	–	–	–
Enhanced, with 8-inch diagonal reconfigurable multi-color display	–	–	–	○ ²	●	●	●
Head-Up Display: Color	–	–	–	○ ²	○ ⁴	●	●
Lighting: Interior spectrum with 24 different color selections	–	–	–	○ ²	–	●	●
Mirror: Rearview manual day/night, frameless	●	●	●	–	●	–	–
Auto-dimming	–	–	–	●	–	–	–
Auto-dimming Rear Camera Mirror ²³ with full camera display	–	–	–	–	–	● ²⁵	●
Remote vehicle starter system	○ ²¹	○ ²¹	○ ²¹	○ ²¹	○ ²¹	○ ²¹	○ ²¹
Sunroof: Power	–	○	○	○	○	○	○
Wireless charging ²⁶	–	–	–	–	–	–	●

¹ Requires available RS Package or 1LE Track Performance Package. ² Requires available Convenience and Lighting Package. ³ Requires available RS Package. ⁴ Convertible only. ⁵ Included with available ZL1 1LE Extreme Track Package. ⁶ Not available with exposed carbon-fiber-weave hood insert or ZL1 1LE Extreme Track Package. ⁷ Roof, decklid and spoiler on Coupe only. Decklid, tonneau cover and spoiler on Convertible only. ⁸ Requires available Heavy-Duty Cooling and Brake Package or 1LE Track Performance Package. ⁹ Requires available SS 1LE Track Performance Package. ¹⁰ Coupe only. ¹¹ Requires available 1LE Track Performance Package. ¹² Requires available Heavy-Duty Cooling and Brake Package with 2.0L 4-cylinder engine. ¹³ Requires available 3.6L V6 engine. Included with available 1LE Track Performance Package when 3.6L V6 engine is specified. ¹⁴ Not available with 2.0L 4-cylinder engine. ¹⁵ Requires available ZL1 1LE Extreme Track Package. ¹⁶ Not available with ZL1 1LE Extreme Track Package. ¹⁷ Includes Active Rev Matching. ¹⁸ Includes Active Fuel Management with available 3.6L V6 engine. ¹⁹ Not available with limited-slip differential. ²⁰ Includes Active Fuel Management. ²¹ Requires available automatic transmission. ²² A NOTE ON CHILD SAFETY: Always use seat belts and the correct child restraint for your child's age and size, even with airbags. Even in vehicles equipped with the Passenger Sensing System, children are safer when properly secured in a rear seat in the appropriate infant, child or booster seat. Never place a rear-facing infant restraint in the front seat of any vehicle equipped with an active frontal airbag. See your vehicle Owner's Manual and the child safety seat instructions for more safety information. ²³ Read the vehicle Owner's Manual for important feature limitations and information. ²⁴ Removed when Performance Data Recorder is ordered. ²⁵ Not available with SS 1LE Track Performance Package. ²⁶ The system wirelessly charges one PMA- or Qi-compatible mobile device. Some devices require an adaptor or back cover. To check for phone or other device compatibility, visit my.chevrolet.com/learn for details.

SPECIFICATIONS (CONTINUED)

● STANDARD ○ AVAILABLE – NOT AVAILABLE

	LSCOUPE	1LT	2LT	3LT	1SS	2SS	ZL1
ENTERTAINMENT							
Chevrolet Infotainment 3 System ¹ with 7-inch diagonal color touch-screen, AM/FM stereo, Bluetooth [®] audio streaming ² for two active devices, voice command pass-through to compatible phone, and Apple CarPlay ^{®3} and Android Auto ^{™4} compatibility	●	●	●	–	–	–	–
Chevrolet Infotainment 3 Plus System ¹ with 8-inch diagonal HD color touch-screen, includes features listed above, enhanced voice recognition, in-vehicle apps ⁵ and cloud-connected personalization for select infotainment and vehicle settings (dealer upgradable to embedded navigation; subscription required for enhanced and connected services after trial period)	–	○ ⁵	○ ⁵	–	●	●	●
Chevrolet Infotainment 3 Premium System ¹ with Navigation, includes Plus system features, connected navigation and additional memory for in-vehicle apps ⁵	–	–	–	●	–	○	○
Performance Data Recorder and video recorder ⁷	–	–	–	○ ^{8,9}	○ ¹⁰	○ ¹⁰	○
Bose premium 9-speaker (Coupe) or 7-speaker (Convertible) audio system	–	○ ⁵	○ ⁵	●	–	●	●
SiriusXM [®] Radio ¹¹ All Access Package with 12-month trial subscription	–	●	●	●	●	●	●
Chevrolet Connected Access ¹² with 10 years of standard connectivity, which currently includes Vehicle Diagnostics and Dealer Maintenance Notification	●	●	●	●	●	●	●
4G LTE Wi-Fi ^{®13} for up to seven devices, includes 1 month or 3 GB of data (whichever comes first)	○	○	○	○	○	○	○

	LSCOUPE	1LT	2LT	3LT	1SS	2SS	ZL1
WHEELS							
18" x 8.5" 5-split-spoke Silver-painted aluminum	●	–	–	–	–	–	–
18" x 8.5" 5-spoke Silver-painted aluminum	–	●	●	●	–	–	–
20" 5-spoke Bright Silver-painted aluminum wheels paired with summer-only tires ¹⁶ (20" x 8.5" front, 20" x 9.5" rear)	–	–	–	–	●	●	–
20" x 8.5" 5-split-spoke premium Gray-painted machined-face aluminum	–	○ ¹⁴	○ ¹⁴	○ ¹⁴	–	–	–
20" x 8.5" 5-spoke Carbon Flash-painted aluminum	–	○	○	○	–	–	–
20" x 8.5" 5-split-spoke Bright Silver-painted aluminum	–	○ ¹⁴	○ ¹⁴	○ ¹⁴	–	–	–
20" 5-split-spoke premium Gray-painted machined-face aluminum wheels paired with summer-only tires ¹⁵ (20" x 8.5" front, 20" x 9.5" rear)	–	–	–	–	○	○	–
20" 5-split-spoke Bright Silver-painted aluminum wheels paired with summer-only tires ¹⁵ (20" x 8.5" front, 20" x 9.5" rear)	–	–	–	–	○	○	–
20" 5-spoke Carbon Flash-painted aluminum wheels paired with summer-only tires ¹⁵ (20" x 8.5" front, 20" x 9.5" rear)	–	–	–	–	○	○	–
20" 5-split-spoke Black-painted forged-aluminum wheels paired with summer-only tires ¹⁵ (20" x 8.5" front, 20" x 9.5" rear)	–	○ ⁹	○ ⁹	○ ⁹	–	–	–
20" 5-split-spoke Satin Graphite forged-aluminum wheels paired with summer-only tires ¹⁵ (20" x 10" front, 20" x 11" rear)	–	–	–	–	○ ¹⁰	○ ¹⁰	–
20" 10-split-spoke Dark Graphite-painted forged-aluminum wheels paired with summer-only tires ¹⁵ (20" x 10" front, 20" x 11" rear)	–	–	–	–	–	–	●
19" 5-split-spoke low-gloss Black-painted forged-aluminum wheels paired with summer-only tires ¹⁵ (19" x 11" front, 19" x 12" rear)	–	–	–	–	–	–	○ ¹⁶

¹ Chevrolet Infotainment System functionality varies by model. Full functionality requires compatible Bluetooth and smartphone, and USB connectivity for some devices. Map coverage available in the United States, Puerto Rico and Canada. ² Visit my.chevrolet.com/learn for vehicle and smartphone compatibility. ³ Vehicle user interface is a product of Apple and its terms and privacy statements apply. Requires compatible iPhone and data plan rates apply. ⁴ Vehicle user interface is a product of Google and its terms and privacy statements apply. Requires the Android Auto app on Google Play and an Android compatible smartphone running Android 5.0 Lollipop or higher. Data plan rates apply. ⁵ Visit chevrolet.com/connectivity for more details. ⁶ Requires available Technology Package. ⁷ Coupe only. ⁸ Requires available Convenience and Lighting Package. ⁹ Requires available 1LE Track Performance Package. ¹⁰ Requires available SS 1LE Track Performance Package. ¹¹ If you decide to continue service after your trial, the subscription plan you choose will automatically renew thereafter and you will be charged according to your chosen payment method at then-current rates. Fees and taxes apply. To cancel you must call SiriusXM at 1-866-635-2349. See SiriusXM Customer Agreement for complete terms at siriusxm.com. All fees and programming subject to change. ¹² Standard connectivity available only to original purchaser for 10 years. Connected Access services are subject to change. Does not include emergency or security services. Diagnostic capabilities vary by model and service plan. Message and data rates may apply. Requires contact method on file and enrollment to receive alerts. Not all issues will deliver alerts. Visit onstar.com for details and limitations. ¹³ Service varies with conditions and location. Requires active service plan and paid AT&T data plan. Visit onstar.com for details and limitations. ¹⁴ Requires available RS Package. ¹⁵ Do not use summer-only tires in winter conditions, as it would adversely affect vehicle safety, performance and durability. Use only GM-approved tire and wheel combinations. Unapproved combinations may change the vehicle's performance characteristics. For important tire and wheel information, go to my.chevrolet.com/learnAbout/chevrolettires or see your dealer. ¹⁶ Requires available ZL1 1LE Extreme Track Package.

SPECIFICATIONS (CONTINUED)

	LSCOUPE	1LT	2LT	3LT	1SS	2SS	ZL1
PACKAGES							
RS Package	-	○	○	○	-	-	-
20" 5-split-spoke premium Gray-painted machined-face aluminum wheels, LED taillamps, RS-specific grilles and decklid-mounted lip spoiler (Coupe only). Also upgradable to 20" 5-spoke Carbon Flash-painted aluminum wheels or 20" 5-split-spoke Bright Silver-painted aluminum wheels							
Heavy-Duty Cooling and Brake Package	-	○ ¹	○ ¹	○ ¹	-	-	-
External engine oil cooler, extra-capacity cooling system and Brembo 4-piston front brake calipers; also includes auxiliary engine coolant cooler with 2.0L 4-cylinder engine							
Technology Package	-	○	○	-	-	-	-
Chevrolet Infotainment 3 Plus System ² and Bose premium 9-speaker (Coupe) or 7-speaker (Convertible) audio system							
Convenience and Lighting Package	-	-	-	○	-	-	-
Memory Package, heated steering wheel, enhanced Driver Information Center with 8-inch diagonal reconfigurable multi-color display, Head-Up Display, Rear Park Assist ³ , Rear Cross Traffic Alert ³ , Lane Change Alert with Side Blind Zone Alert ³ , Forward Collision Alert ³ , outside heated power-adjustable body-color mirrors with driver-side auto-dimming feature, interior spectrum lighting, illuminated doorsill plates, and aluminum accents on door trim and shifter cap							
Adrenaline Red Interior Accent Trim Package⁴	-	-	○	○ ⁵	-	○	-
Jet Black interior with Adrenaline Red seat inserts, door inserts and stitching on front seats, doors, steering wheel, shifter and center console							
Ceramic White Interior Accent Trim Package	-	-	○	○ ⁵	-	○	-
Jet Black interior with Ceramic White seat inserts, door inserts and stitching on front seats, doors, steering wheel, shifter and center console							

● STANDARD ○ AVAILABLE – NOT AVAILABLE

	LSCOUPE	1LT	2LT	3LT	1SS	2SS	ZL1
PACKAGES (CONTINUED)							
1LE Track Performance Package^{6,7}	-	○ ⁸	○ ⁸	○ ⁸	-	-	-
Satin Black hood wrap, front splitter, rear blade spoiler, Black-painted 20" forged-aluminum wheels with 245/40R20 (front) and 275/35R20 (rear) summer-only tires ⁹ ; Gray RS badging, LED projector-style headlamps, LED turn signal lamps, LED taillamps with dark lenses, suede-wrapped flat-bottom steering wheel and shift knob, Brembo 4-piston front brake calipers, FE3 suspension components (from Camaro SS) including dampers, rear cradle mounts, ball-jointed rear toe links and stabilizer bars, dual-mode exhaust (requires available 3.6L V6 engine), and heavy-duty cooling including engine oil cooler (Snow/Ice mode is replaced with Track mode on Driver Mode Selector)							
SS1LE Track Performance Package^{6,7}	-	-	-	-	○ ¹⁰	○	-
Satin Black hood wrap, front splitter, rear blade spoiler, Satin Graphite 20" forged-aluminum wheels with Goodyear Eagle [®] F1 SuperCar [®] 285/30R20 (front) and 305/30R20 (rear) summer-only tires ⁹ ; RECARO [®] performance seats, suede-wrapped flat-bottom steering wheel and shift knob, Brembo brakes with 6-piston monobloc front 2-piece rotors and 4-piston rear calipers, dual-mode exhaust, Magnetic Ride Control, Electronic Limited-Slip Differential, and Performance-Tuned suspension with unique bushings, springs and stabilizer bars							
ZL1 1LE Extreme Track Package⁸	-	-	-	-	-	-	○ ¹¹
Satin Black hood wrap, low-gloss Black outside rearview mirrors, unique front splitter and front dive planes with lower daytime running lamps deleted, exposed-weave carbon-fiber hood insert and rear spoiler, dark-finish taillamps, low-gloss Black-painted forged-aluminum wheels with Goodyear Eagle F1 SuperCar 3R 305/30R19 (front) and 325/30R19 (rear) summer-only tires ^{5,12} ; fixed rear seat, suede-wrapped flat-bottom steering wheel and shift knob, Red-painted Brembo brake calipers, and adjustable Performance suspension with Multimatic DSSV (Dynamic Suspension Spool Valve) dampers							

¹ Requires available RS Package or 20" 5-spoke Carbon Flash-painted aluminum wheels. ² Chevrolet Infotainment System functionality varies by model. Full functionality requires compatible Bluetooth and smartphone, and USB connectivity for some devices. Map coverage available in the United States, Puerto Rico and Canada. ³ Read the vehicle Owner's Manual for important feature limitations and information. ⁴ Not available with Crush or Riverside Blue Metallic exterior colors. ⁵ Requires available Convenience and Lighting Package. ⁶ Coupe only. ⁷ Requires Jet Black interior and 6-speed manual transmission. ⁸ Not available with RS Package. ⁹ Do not use summer-only tires in winter conditions, as it would adversely affect vehicle safety, performance and durability. Use only GM-approved tire and wheel combinations. Unapproved combinations may change the vehicle's performance characteristics. For important tire and wheel information, go to my.chevrolet.com/learnAbout/chevrolettires or see your dealer. ¹⁰ Includes Head-Up Display. Not available with power sunroof. ¹¹ Requires 6-speed manual transmission. Not available with power sunroof or Black Metallic Center Stripes. ¹² Driving on wet roads, in heavy rain, or through standing water with competition-oriented tires may cause hydroplaning and loss of control. Use extreme caution and drive slowly on wet roads.



COMPLETE CARE

Experience Chevrolet Complete Care, a comprehensive coverage, warranty and protection program that comes standard with every new 2019 Chevrolet Camaro lease and purchase. Simply, it is designed around you, to make it easy to keep your Chevrolet like new – and give you the confidence you deserve when you need it most.

YOUR COMPREHENSIVE OWNER BENEFIT PROGRAM.

- Includes one maintenance visit (oil change, tire rotation [excludes Camaro ZL1 and models with available 1LE Track Performance Package, due to their unidirectional tires; see Owner's Manual for details] and multi-point vehicle inspection)¹
- 5 years/60,000 miles² of Roadside Assistance³ and Courtesy Transportation.
- 3-year/36,000-mile² Bumper-to-Bumper Limited Warranty.
- 5-year/60,000-mile² Powertrain Limited Warranty.
- 6 years/100,000 miles² of Rust-Through Protection.
- 1 month of Chevrolet Connected Services⁴ and 1 month of OnStar Safety & Security Plan coverage.⁴

DIMENSIONS

Length	188.3" (LS Coupe, LT and SS) 190.2" (ZL1)	Width	74.7" (LS Coupe, LT and SS) 75.0" (ZL1)	Head Room (Coupe, front)	38.5"
Wheelbase	110.7"	Front Track	62.5" (LS Coupe and LT) 63.0" (SS) 63.4" (ZL1)	Head Room (Convertible, front)	38.4"
Height	53.1" (LS, LT and SS Coupe) 52.9" (LT and SS Convertible and ZL1 Coupe) 52.6" (ZL1 Convertible)	Rear Track	63.7" (LS Coupe and LT) 62.9" (SS) 62.0" (ZL1)	Leg Room (front)	43.9"

MAXIMUM CAPACITIES

EPA-ESTIMATED FUEL ECONOMY

2.0L turbocharged 4-cylinder	20 MPG city/30 highway/23 combined (manual) 22 MPG city/31 highway/25 combined (automatic)
3.6L V6	16 MPG city/27 highway/20 combined (manual) 19 MPG city/29 highway/22 combined (automatic)

6.2L V8	16 MPG city/27 highway/20 combined (manual) 16 MPG city/27 highway/20 combined (automatic)
6.2L supercharged V8	14 MPG city/20 highway/16 combined (manual) 13 MPG city/21 highway/16 combined (automatic)

FUEL TANK (APPROXIMATE)

19 gallons

CARGO VOLUME⁵

9.1 cubic feet (Coupe)
7.3 cubic feet (Convertible, top up)

OWNERSHIP EXTRAS

CHEVROLET



CHEVROLET.COM/WARRANTY

CHEVROLET



CHEVROLET.COM/ACCESSORIES



ONSTAR.COM

SIRIUSXM

SIRIUSXM.COM

NEW VEHICLE LIMITED WARRANTY

3-YEAR/36,000-MILE BUMPER-TO-BUMPER LIMITED WARRANTY Chevrolet will warrant each 2019 Camaro from bumper to bumper for 3 years/36,000 miles (whichever comes first; see dealer for details), with no deductible, from the original in-service date of the vehicle, for warrantable repairs that are required as a result of defects due to materials and/or workmanship. Cosmetic corrosion resulting from defects is also covered under the Bumper-to-Bumper Limited Warranty. In addition, rust-through corrosion will be covered for 6 years/100,000 miles (whichever comes first). See dealer for details.

5-YEAR/60,000-MILE TRANSFERABLE POWERTRAIN LIMITED WARRANTY Every 2019 Camaro comes with a 5-year/60,000-mile (whichever comes first) transferable Powertrain Limited Warranty. 24/7 Roadside Assistance and Courtesy Transportation are also offered for the duration of the Powertrain Limited Warranty. Please see your Chevrolet dealer for details.

¹ Maintenance visit must occur within first year of vehicle delivery. Service visit consists of ACDelco dexos1™ Full Synthetic Oil and Filter Change/Tire Rotation/MPVI. Does not include air filters. See participating dealer for other restrictions and complete details. ² Whichever comes first. See dealer for details. ³ Roadside service provided by Allstate Roadside Services. Limitations apply. ⁴ Connected Services include navigation services and Remote Access Plan, and 1 month or 3 GB of 4G LTE data (whichever comes first) from vehicle delivery date. Data plans offered by AT&T. Services are subject to User Terms and limitations. Certain services require working electrical system, cell service and GPS signal. OnStar links to emergency services. Visit onstar.com for coverage map, details and system limitations. ⁵ Cargo and load capacity limited by weight and distribution. ⁶ Do not use summer-only tires in winter conditions, as it would adversely affect vehicle safety, performance and durability. Use only GM-approved tire and wheel combinations. Unapproved combinations may change the vehicle's performance characteristics. For important tire and wheel information, go to my.chevrolet.com/learnAbout/chevrolettires or see your dealer.

IMPORTANT INFORMATION

CHEVROLET CONNECTED SERVICES AND ONSTAR Effective May 1, 2018, available Chevrolet Connected Services have changed significantly. While many of the offered services are the same, available plans and pricing are different. Connected vehicle services require a paid connected vehicle services plan or trial and connected hardware, vehicle electrical system (including battery), wireless service and GPS satellite signals to be available and operating for features to function properly. OnStar acts as a link to existing emergency service providers. Visit onstar.com for coverage map, details and system limitations.

CHEVROLET OWNER CENTER (MY.CHEVROLET.COM) Everything you need to know. Anything you need to do. Your Chevrolet Owner Center makes it easy. Create your account today to get the most out of your new vehicle. Get special alerts and offers, schedule service, review your maintenance schedule, and view how-to videos specifically for your vehicle. All online, anytime. Visit the Owner Center today to register or take a tour.

ENGINES Chevrolet products are equipped with engines produced by GM Global Propulsion Systems or other suppliers to GM worldwide. The engines in Chevrolet products may also be used in other GM makes and models.

ASSEMBLY Chevrolet vehicles and their components are assembled or produced by different operating units of General Motors, its subsidiaries or suppliers to GM worldwide. We sometimes find it necessary to produce Chevrolet vehicles with different or differently sourced components than originally scheduled. Since some options may be unavailable when your vehicle is assembled, we suggest you verify that your vehicle includes the equipment you ordered and that, if there were changes, they are acceptable to you.

A NOTE ON CHILD SAFETY Always use seat belts and the correct child restraint for your child's age and size, even with airbags. Even in vehicles equipped with the Passenger Sensing System, children are safer when properly secured in a rear seat in the appropriate infant, child or booster seat. Never place a rear-facing infant restraint in the front seat of any vehicle equipped with an active frontal airbag. See your vehicle Owner's Manual and the child safety seat instructions for more safety information.

IMPORTANT WORDS ABOUT THIS CATALOG We have tried to make this catalog comprehensive and factual. We reserve the right, however, to make changes at any time, without notice, in prices, colors, materials, equipment, specifications, models and availability. Specifications, dimensions, measurements, ratings and other numbers in this catalog and other printed materials provided at the dealership or affixed to vehicles are approximations based on design and engineering drawings, prototypes and laboratory tests. Your vehicle may differ due to variations in manufacture and equipment. Since some information may have been updated since the time of printing, please check with your Chevrolet dealer for complete details.

Chevrolet reserves the right to lengthen or shorten the model year for any product for any reason or to start and end model years at different times. Certain vehicle features may lose their usefulness over time due to obsolescence from technological changes. Unless otherwise noted, all claims based on GM Sports Car segment and latest available competitive information. Excludes other GM vehicles.

TIRES Camaro SS and ZL1 models, as well as models with available 1LE Track Performance Package, come equipped with summer-only tires⁶ that tend to wear faster and are more susceptible to damage from road hazards or curb impact than standard profile tires. This type of damage is not covered by the GM New Vehicle Limited Warranty. See your dealer for proper tire selection.

SPARE TIRE INFORMATION There is no standard jack or spare tire in the 2019 Chevrolet Camaro. Some vehicles have a tire sealant and compressor kit that uses a liquid tire sealant to temporarily seal up to a one-quarter-inch puncture in the tread area of the tire. After using the tire inflator kit, it is recommended that you take the tire to an authorized retailer for inspection and repair as soon as possible, but at least within 100 miles of driving. The tire sealant cannot seal and inflate sidewall damage, punctures larger than one-quarter inch, or a tire that has unseated from the wheel. The sealant can only be used on one tire and for one time before its expiration date.

CHEVROLET OWNERSHIP EXPERIENCE Chevrolet is committed to enhancing the vehicle shopping and ownership experience through a wide array of programs. Visit chevrolet.com to build and price, find a vehicle, request a quote, compare vehicles, find financial tools or track your vehicle order. You'll also find information about 24-hour Roadside Assistance, Courtesy Transportation, Customer Assistance, GM Mobility, safety and current incentives.

CHEVROLET.COM/SAFETY Chevrolet is committed to keeping you and your family safe – from the start of your journey to your destination. That's why every Chevrolet is designed with a comprehensive list of safety and security features to help give you peace of mind.

GMMOBILITY.COM (1-800-323-9935) GM Mobility™ offers financial assistance for eligible adaptive equipment to make automotive travel easier for persons with disabilities or special transportation needs. To learn more about special GM Mobility offers, visit gmmobility.com.

THE BUYPOWER CARD The Chevrolet BuyPower Card – Every purchase you make with the BuyPower Card from Capital One* helps you earn toward an eligible new Chevrolet, Buick, GMC or Cadillac vehicle. There's no limit on the amount you can earn or redeem, and your Earnings don't expire. Visit chevroletbuypowercard.com/catalogs.

* Capital One, N.A. is the issuer of the BuyPower Card. General Motors ("GM") is responsible for the operation and administration of the Earnings program.



[TWITTER.COM/CHEVROLET](https://twitter.com/CHEVROLET)



[YOUTUBE.COM/CHEVROLET](https://youtube.com/CHEVROLET)



[FACEBOOK.COM/CHEVROLET](https://facebook.com/CHEVROLET)



[INSTAGRAM.COM/CHEVROLET](https://instagram.com/CHEVROLET)

GM, the GM logo, Chevrolet, the Chevrolet logo, and the slogans, emblems, vehicle model names, vehicle body designs and other marks appearing in this catalog are the trademarks and/or service marks of General Motors, its subsidiaries, affiliates or licensors. ©2018 OnStar LLC. All rights reserved. Sirius, XM, SiriusXM and all related marks and logos are trademarks of Sirius XM Radio Inc. The Bluetooth word mark is a registered trademark owned by Bluetooth SIG, Inc., and any use of such mark by Chevrolet is under license. Bose is a registered trademark of the Bose Corp. Brembo is a registered trademark of Brembo S.p.A. RECARO is a registered trademark of RECARO GmbH & Co. Goodyear Eagle and SuperCar are registered trademarks of The Goodyear Tire & Rubber Company. ©2018 General Motors. All rights reserved. October 2018



FIND NEW ROADS™

[CHEVROLET.COM](https://www.chevrolet.com)