

2019 CHEVROLET CORVETTE PLAYBOOK

December 2017 edition. GM internal use only.



2019 MODEL YEAR UPDATES

2019 CORVETTE ZR1

2019 CORVETTE LINEUP

CORVETTE EXPERIENCE

CORVETTE ACCESSORIES

KEY DATES

RESOURCES



USING AN IPAD®? 1. Click the “Open in iBooks” button in the top-right corner of this PDF. (The button appears when you tap the screen.)
Save this PDF to iBooks: 2. When the PDF opens in iBooks, tap your finger on “Library” in the upper-left corner of the menu to save it to iBooks.

GM Confidential. For GM Salesperson use only. Not intended to be used for advertising purposes. Preproduction 2019 Corvette ZR1 model shown with optional equipment. Actual production model may vary. Available Spring 2018. GM reserves the right to make changes at any time, without notice, in prices, colors, materials, equipment, features, specifications, models and availability.

2019 MODEL YEAR UPDATES



MODELS AND PACKAGES

- **NEW** (1YV07) ZR1 Coupe and ZR1 Convertible (1YV67) with (LT5) 6.2L supercharged V8 SIDI engine
- **NEW** (ZTK) Track Performance Package available on ZR1
- **NEW** (ZLZ) Sebring Orange Design Package available on ZR1

EXTERIOR

- **NEW** (DFZ) Jake Satin Black Stinger Stripe available on ZR1
- **NEW** Premium Indoor Dust Cover¹ available on ZR1
- **NEW** Sebring Orange Tintcoat² exterior color for 2019 Corvette models

PERFORMANCE

- **NEW** Mobil 1™ 0W-40 dexos2™ oil factory-filled in all 2019 Corvette engines³
- **NEW** Accessory Performance Induction System for 2019 Corvette models

CORVETTE EXPERIENCE

- (PBC) Corvette Engine Build Program returns for Z06 and ZR1 (limited availability)



¹ Requires available ZTK Performance Package. ² Additional charge. Premium paint. ³ For maximum track performance with the LT5 engine (ZR1 models), Formula 15W-50 is required.



2019 MODEL
YEAR UPDATES

2019 CORVETTE
ZR1

2019 CORVETTE
LINEUP

CORVETTE
EXPERIENCE

CORVETTE
ACCESSORIES

KEY DATES

RESOURCES

2019 CORVETTE ZR1: EXTERIOR

The 2019 ZR1 is the fastest, most powerful, most advanced production Corvette ever produced. It incorporates select technologies born from Corvette Racing, extensive use of carbon fiber and sophisticated aerodynamic configurations for customers seeking a supercar that's both luxurious and overwhelmingly capable.

The available **ZTK Performance Package** adds a **stanchion-mounted adjustable carbon-fiber high wing** (shown)

Standard carbon-fiber front splitter, rockers and **rear wing**



¹ Do not use summer-only tires in winter conditions, as it would adversely affect vehicle safety, performance and durability. Use only GM-approved tire and wheel combinations. Unapproved combinations may change the vehicle's performance characteristics. For important tire and wheel information, go to <https://my.chevrolet.com/learnAbout/chevrolettires> or see your dealer for details.



2019 MODEL
YEAR UPDATES

2019 CORVETTE
ZR1
■ ■ ■ ■ ■ >

2019 CORVETTE
LINEUP

CORVETTE
EXPERIENCE

CORVETTE
ACCESSORIES

KEY DATES

RESOURCES

2019 CORVETTE ZR1: EXTERIOR



Satin Graphite-painted aluminum (RPO Q9J)



Carbon Flash-painted aluminum (RPO Q9H)

Corvette ZR1 offers the following wheel¹ choices:

RPO Q9G
PEARL NICKEL-PAINTED ALUMINUM

19" x 10.5" front and 20" x 12" rear
wheels paired with summer-only tires¹

RPO Q9H
CARBON FLASH-PAINTED ALUMINUM

19" x 10.5" front and 20" x 12"
wheels paired with summer-only tires¹

RPO Q9J
SATIN GRAPHITE-PAINTED ALUMINUM

19" x 10.5" front and 20" x 12"
wheels paired with summer-only tires¹

RPO Q9K
CHROME ALUMINUM

19" x 10.5" front and 20" x 12"
wheels paired with summer-only tires¹

¹ Do not use summer-only tires in winter conditions, as it would adversely affect vehicle safety, performance and durability. Use only GM-approved tire and wheel combinations. Unapproved combinations may change the vehicle's performance characteristics. For important tire and wheel information, go to <https://my.chevrolet.com/learnAbout/chevrolettires> or see your dealer for details.



2019 MODEL
YEAR UPDATES

2019 CORVETTE
ZR1
◀ ■ ■ ■ ■ ▶

2019 CORVETTE
LINEUP

CORVETTE
EXPERIENCE

CORVETTE
ACCESSORIES

KEY DATES

RESOURCES

2019 CORVETTE ZR1: INTERIOR

The interior of the 2019 ZR1 was designed to deliver a very serious, straightforward and driver-focused feel. The 1ZR trim level is positioned as more of a hardcore track version with limited factory options. The 3ZR trim level will be fully contented. All models include unique ZR1 badging on the steering wheel rim, headrests, sill plates, gauge cluster and interior plaque.



Available Sebring Design Package interior shown.



1ZR TRIM LEVELS INCLUDE:

- Jet Black interior only
- Leather seating surfaces with available sueded-microfiber inserts
- Chevrolet MyLink™¹ with 8-inch diagonal color touch-screen, Bluetooth®² streaming audio for music and select phones, voice-activated technology for radio and phone, featuring Android Auto³ and Apple CarPlay³ capability for compatible phones
- Bose® premium 9-speaker sound system
- Sirius XM® Satellite Radio with 3-month trial⁴
- OnStar® 4G LTE Wi-Fi⁵
- Keyless open and start
- Rear Vision Camera

3ZR ADDS:

- Available Jet Black (available with Red, Yellow or Blue stitching), Gray, Kalahari, Adrenaline Red, Spice Red or Jet Black with Orange stitching (included with the available **Sebring Design Package**) interior
- Napa leather seating surfaces
- Power bolster and power lumbar seat adjusters
- Heated and vented seats
- Custom Leather-Wrapped Interior Package (leather-wrapped upper instrument panel, upper door trim panels and console storage cover)
- Suede-wrapped upper interior trim
- Carbon-fiber rim steering wheel
- Gloss carbon-fiber interior trim
- Navigation⁶
- Performance Data Recorder
- Bose® advanced 10-speaker system
- Front curb view cameras
- Memory Package (recalls 2 driver “presets” for 8-way power seat, outside mirrors and tilt/telescoping steering column)
- Universal Home Remote
- Auto-dimming rearview mirror

¹ MyLink functionality varies by model. Full functionality requires compatible Bluetooth and smartphone. Some devices require USB connectivity. ² Visit my.chevrolet.com/learn for vehicle and smartphone capability. ³ Vehicle user interfaces are products of Apple and Google and their terms and privacy statements apply. Requires compatible smartphone and data plan rates apply. ⁴ If you decide to continue service after your trial, the subscription plan you choose will automatically renew thereafter and you will be charged according to your chosen payment method at then-current rates. Fees and taxes apply. To cancel you must call SiriusXM at 1-866-635-2349. See SiriusXM Customer Agreement for complete terms at www.siriusxm.com. All fees and programming subject to change. Sirius, XM, SiriusXM and all related marks and logos are trademarks of Sirius XM Radio Inc. ⁵ Requires a compatible mobile device, active OnStar service and data plan. 4G LTE service available in select markets. Visit onstar.com for coverage map, details and system limitations. Data plan provided by AT&T. ⁶ Map coverage available in the United States, Puerto Rico and Canada.



2019 MODEL
YEAR UPDATES

2019 CORVETTE
ZR1



2019 CORVETTE
LINEUP

CORVETTE
EXPERIENCE

CORVETTE
ACCESSORIES

KEY DATES

RESOURCES

2019 CORVETTE ZR1: PERFORMANCE

New, hand-assembled LT5 small block 6.2L supercharged V8 engine will come standard with a 7-speed manual transmission that includes Active Rev Matching or can be paired with the available 8-speed paddle-shift automatic transmission. This LT5 features:

- 755 horsepower and 715 lb.-ft. of torque
- Over 600 lb.-ft. of torque available from 2,200 rpm to redline (6,500 rpm)
- The largest Eaton® supercharger to date that delivers peak boost pressure of 13 psi and 52% larger displacement (compared to the LT supercharger on Z06 models) and features high-flow efficiency 4-lobe design rotors to maintain peak effectiveness at higher speeds
- A new dual fuel injection system that uses a port fuel rail and injectors, in addition to the direct injection system to provide supplemental fueling during power enrichment moments (a Chevrolet first)
- A new 95 mm bore throttle that complements the larger supercharger and dual fuel injection system to flow plenty of air in the engine
- An upgraded crankshaft (higher-strength steel) and torsional vibration damper with a steel inertia ring to handle higher operating loads
- Dry-sump lubrication that helps prevent oil starvation around high-G corners
- The available [ZR1 Engine Build Experience](#) – the opportunity for owners to hand build their engine at the GM Performance Build Center in Bowling Green, Kentucky, under the supervision and support of skilled technicians (limited availability)

The 2019 ZR1 will be the most powerful production Corvette ever made (with a top speed of 212 mph) and will offer relentless power, impressive control and an aggressive new sound. Additional features include:

- Magnetic Ride Control™
- Performance Traction Management
- Electronic Limited-Slip Differential (eLSD)
- Brembo® carbon-ceramic brakes featuring front 15.5-inch rotors with 6-piston calipers and rear 15.3-inch rotors with 4-piston calipers
- [Available ZTK Performance Package](#)
- Dual-mode exhaust with refined tuning characteristics



2019 MODEL
YEAR UPDATES

2019 CORVETTE
ZR1



2019 CORVETTE
LINEUP

CORVETTE
EXPERIENCE

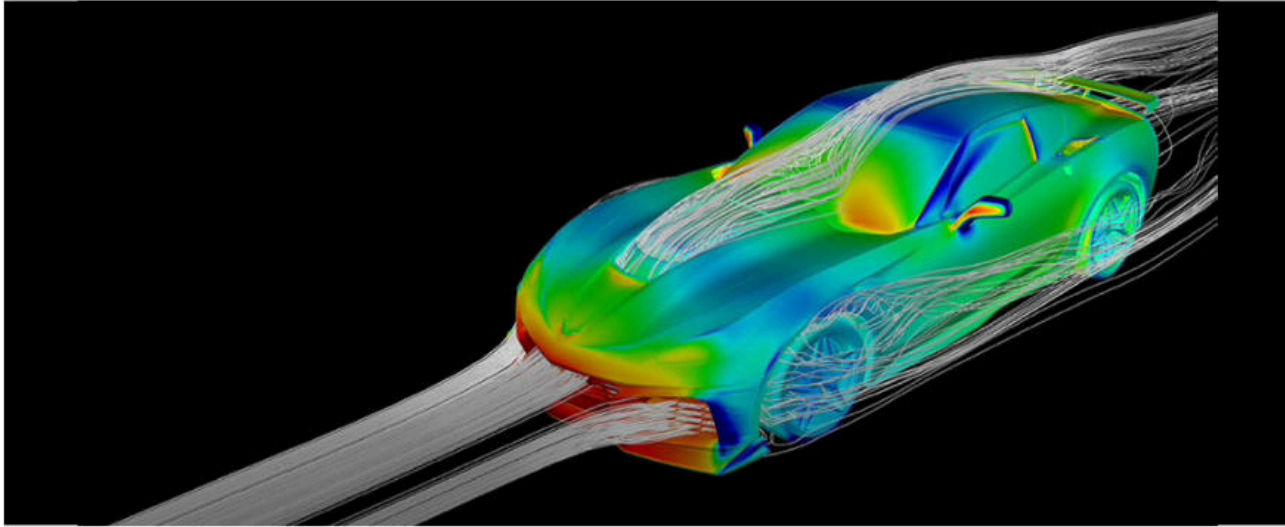
CORVETTE
ACCESSORIES

KEY DATES

RESOURCES

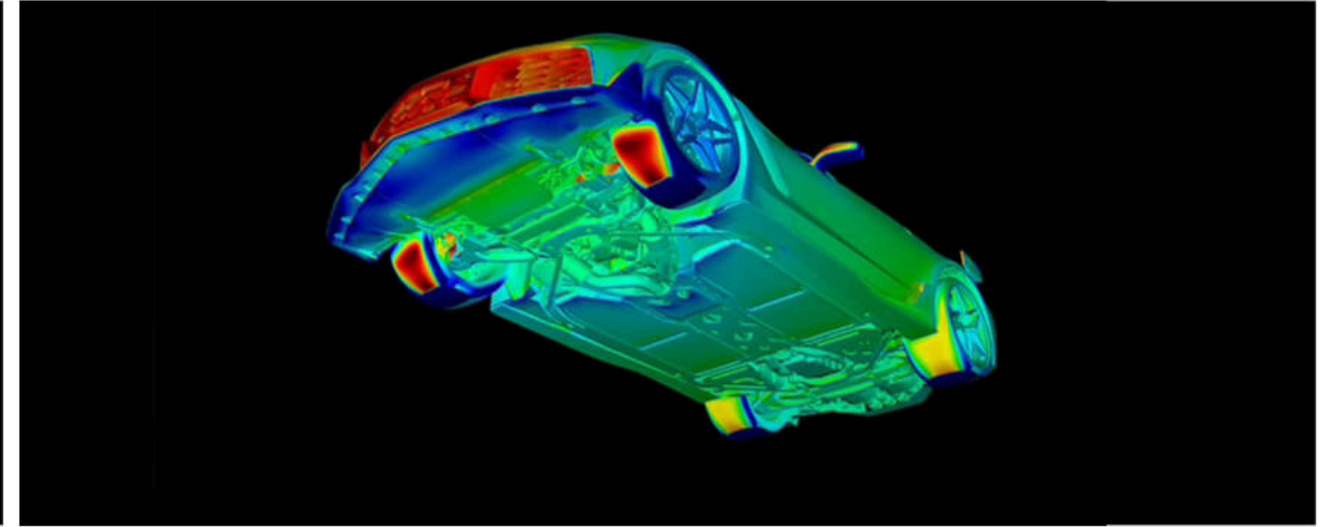
2019 CORVETTE ZR1: PERFORMANCE

Using technology born from the Corvette Racing program and engineered through lengthy testing, two sophisticated aerodynamic configurations allow ZR1 to channel its supercar strength with precision and poise.



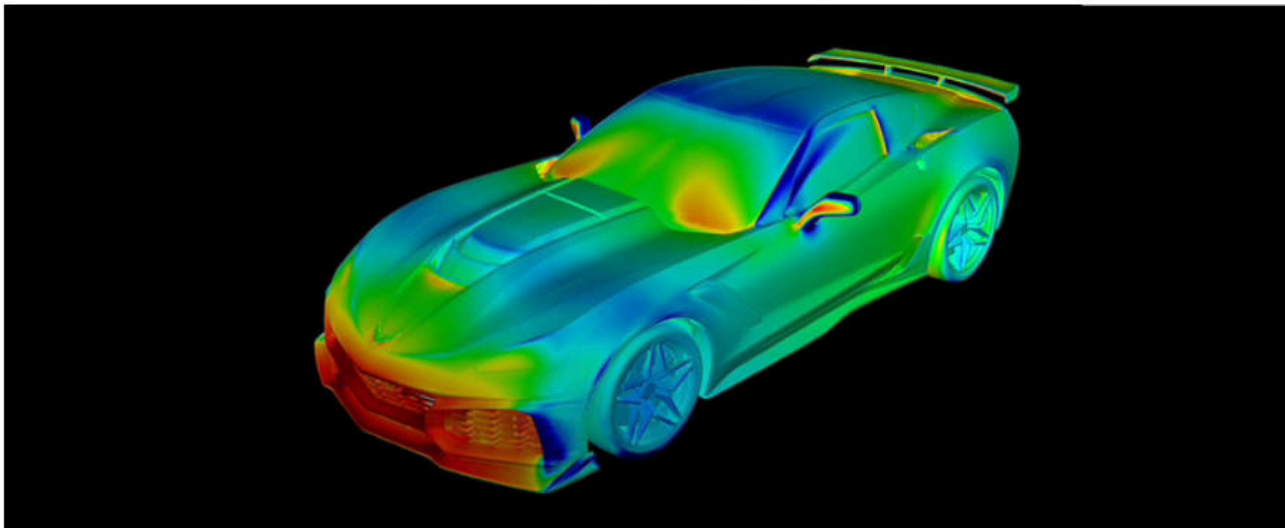
COOLING

ZR1 incorporates the power steering cooler, differential oil cooler and transmission cooling module from Z06 and adds four additional radiators – two new front outboard radiators and two new front low temperature radiators – to help cool the powerful LT5 powerplant.



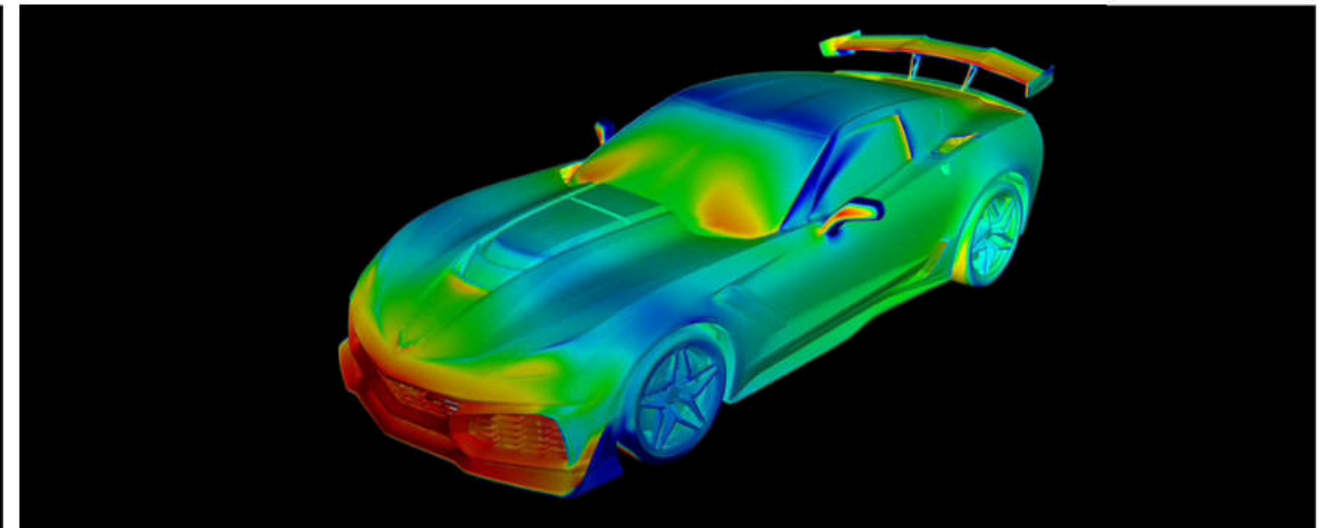
FRONT UNDERWING

A Corvette first, ZR1 borrows front underwing technology from the race car world to turn its closeout panel into a downforce control surface.



LOW WING

The standard rear wing is a significant top-speed enabler, offering 20 percent less drag than the available adjustable high wing, yet still helping create more downforce than the standard Z06.



HIGH WING

The stanchion-mounted carbon-fiber high wing creates about 60 percent more downforce than the current Z06 with Z07 Performance Package while maintaining similar drag. It can be mechanically adjusted up to five degrees for different levels of downforce. The high wing is included with the [available ZTK Performance Package](#).



2019 MODEL
YEAR UPDATES

2019 CORVETTE
ZR1
◀ ■ ■ ■ ■ ■ ▶

2019 CORVETTE
LINEUP

CORVETTE
EXPERIENCE

CORVETTE
ACCESSORIES

KEY DATES

RESOURCES

2019 CORVETTE ZR1: PACKAGES



AVAILABLE ZTK PERFORMANCE PACKAGE

The available ZTK Performance Package was developed with a singular focus – to help owners conquer the track in record time. It features:

- Carbon-fiber end caps added to the front splitter (coupe only)
- A stanchion-mounted adjustable carbon-fiber high wing
- Michelin® Pilot® Sport Cup 2 summer-only tires¹
- Performance-tuned suspension with specific shocks and springs



AVAILABLE SEBRING ORANGE DESIGN PACKAGE

The available Sebring Design Package is designed to grab attention with Sebring Orange Tintcoat exterior paint and includes the following design elements:

- 19-inch front, 20-inch rear Carbon Flash 5-split spoke wheels paired with summer-only tires¹
- Orange-painted stripes on carbon-fiber rockers and front splitter
- Orange brake calipers
- Black suede interior with Orange stitching and Bronze-tinted aluminum trim
- Carbon-fiber and sueded microfiber-wrapped steering wheel
- Competition Sport bucket seats
- Orange seat belts
- Floor mats with ZR1 logo

¹ Do not use summer-only tires in winter conditions, as it would adversely affect vehicle safety, performance and durability. Use only GM-approved tire and wheel combinations. Unapproved combinations may change the vehicle's performance characteristics. For important tire and wheel information, go to <https://my.chevrolet.com/learnAbout/chevrolettires> or see your dealer for details.



2019 MODEL
YEAR UPDATES

2019 CORVETTE
ZR1
◀ ■ ■ ■ ■ ■ ■ ■ ■

2019 CORVETTE
LINEUP

CORVETTE
EXPERIENCE

CORVETTE
ACCESSORIES

KEY DATES

RESOURCES

2019 CORVETTE LINEUP: CORVETTE DIFFERENTIATION

Corvette stands ready to take on all challengers. The performance bandwidth now stretches further than ever with the Stingray, Grand Sport, Z06 and ZR1.



STINGRAY
The Precision Sports Car



GRAND SPORT
The Perfect Combination of Power and Handling



Z06
Challenge the Greatest Supercars in the World



ZR1
Pushes the Corvette Legacy to Its Highest Point Ever

	STINGRAY	GRAND SPORT	Z06	ZR1
TRIM LEVELS	1LT/2LT/3LT	1LT/2LT/3LT	1LZ/2LZ/3LZ	1ZR/3ZR
ENGINE	6.2L LT1 V8	6.2L LT1 V8	6.2L LT4 V8	6.2L LT5 V8
POWER	460 horsepower ¹	460 horsepower	650 horsepower	755 horsepower
TORQUE	465 lb.-ft.	465 lb.-ft.	650 lb.-ft.	715 lb.-ft.
TRANSMISSIONS	7-spd manual with Active Rev Match or available 8-spd auto w/paddle-shift	7-spd manual with Active Rev Match or available 8-spd auto w/paddle-shift	7-spd manual with Active Rev Match or available 8-spd auto w/paddle-shift	7-spd manual with Active Rev Match or available 8-spd auto w/paddle-shift
0-60 MPH ²	3.7 seconds ³	3.6 seconds ⁴	2.95 seconds ⁴	TO COME
HOOD	Low	Low	High	Halo
GRILLE	Stingray	Z06-style, Satin Black	Z06, Carbon Flash	ZR1
TAILLAMPS	Red	Red	Smoked	Red
QUARTER DUCTS	Low	High, Body-Color	High, Carbon Flash	High, Visible Carbon Fiber
REAR FASCIA	Stingray	Wide	Wide	Wide
FENDER	Stingray	Wide	Wide	Wide
FENDER INSERT	Stingray	Grand Sport	Z06	ZR1
STANDARD BRAKE CALIPER COLOR	Gray (JL9)/Black (J55)	Black (J56)/Gray (J57)	Red (J56)/(J57)	Blue (J57)
AVAILABLE PERFORMANCE PACKAGES	Z51 Performance Package	Z07 Performance Package (No Clear Bridge or Tall End Caps)	Z07 Performance Package (requires Carbon-Fiber Ground Effects, includes Clear Bridge and Tall End Caps)	ZTK Performance Package

¹ With available performance exhaust. ² Based on initial vehicle movement. ³ With available Z51 Performance Package. ⁴ With available Z07 Performance Package.



2019 MODEL YEAR UPDATES

2019 CORVETTE ZR1

2019 CORVETTE LINEUP

CORVETTE EXPERIENCE

CORVETTE ACCESSORIES

KEY DATES

RESOURCES

2019 CORVETTE LINEUP: EXTERIOR COLORS

Corvette Stingray, Grand Sport, Z06 and ZR1 offer the following exterior color choices:



Long Beach Red Metallic Tintcoat*



Ceramic Matrix Gray Metallic



Corvette Racing Yellow Tintcoat*



Torch Red



Admiral Blue Metallic



Blade Silver Metallic



Arctic White



Watkins Glen Gray Metallic



Black



Sebring Orange Tintcoat*

*Additional charge. Premium paint.



2019 MODEL
YEAR UPDATES

2019 CORVETTE
ZR1

2019 CORVETTE
LINEUP
◀ ■ ■ ■ ■ ▶

CORVETTE
EXPERIENCE

CORVETTE
ACCESSORIES

KEY DATES

RESOURCES

2019 CORVETTE LINEUP: WHEELS

Corvette Stingray offers the following wheel¹ choices:

Z51-STYLE



RPO Q7S

19" x 8.5" front and 20" x 10" rear Z51-style split 5-spoke Sterling Silver aluminum wheels paired with summer-only tires¹



RPO QCC

19" x 8.5" front and 20" x 10" rear Z51-style split 5-spoke Black machined-aluminum wheels paired with summer-only tires¹



RPO Q7E

19" x 8.5" front and 20" x 10" rear Z51-style split 5-spoke Chrome aluminum wheels paired with summer-only tires¹

MOTORSPORTS



RPO R86

19" x 8.5" front and 20" x 10" rear Motorsports polished-aluminum wheels paired with summer-only tires¹

TORQUE DIRECTIONAL



RPO RNM

19" front and 20" rear Torque-directional Silver-painted aluminum wheels paired with summer-only tires¹



RPO RNP

19" front and 20" rear Z51-style split 5-spoke Black-painted with Yellow stripe aluminum wheels paired with summer-only tires¹



RPO Q7T

19" x 8.5" front and 20" x 10" rear Z51-style split 5-spoke Black aluminum wheels paired with summer-only tires¹



RPO R87

19" x 8.5" front and 20" x 10" rear Z51-style split 5-spoke Satin Black aluminum with Red stripe wheels paired with summer-only tires¹



RPO RNN

19" x 8.5" front and 20" x 10" rear Motorsports Black-painted aluminum wheels paired with summer-only tires¹



RPO R2Q

19" front and 20" rear Torque-directional Chrome aluminum wheels paired with summer-only tires¹

¹ Do not use summer-only tires in winter conditions, as it would adversely affect vehicle safety, performance and durability. Use only GM-approved tire and wheel combinations. Unapproved combinations may change the vehicle's performance characteristics. For important tire and wheel information, go to <https://my.chevrolet.com/learnAbout/chevrolettires> or see your dealer for details.



2019 MODEL YEAR UPDATES

2019 CORVETTE ZR1

2019 CORVETTE LINEUP



CORVETTE EXPERIENCE

CORVETTE ACCESSORIES

KEY DATES

RESOURCES

2019 CORVETTE LINEUP: WHEELS

Corvette Grand Sport and Z06 offer the following wheel¹ choices:

GRAND SPORT



RPO Q8W

19" x 10" front and 20" x 12" rear Grand Sport Pearl Nickel-painted aluminum wheels paired with summer-only tires¹



RPO Q8Z

19" x 10" front and 20" x 12" rear Grand Sport Chrome aluminum wheels paired with summer-only tires¹



RPO Q8K

19" x 10" front and 20" x 12" rear Grand Sport machined-face aluminum wheels paired with summer-only tires¹



RPO Q8X

19" x 10" front and 20" x 12" rear Grand Sport Black aluminum wheels paired with summer-only tires¹



RPO RUR

19" x 10" front and 20" x 12" rear Grand Sport Satin Black aluminum with Red stripe wheels paired with summer-only tires¹

Z06



RPO Q6A

19" x 10" front and 20" x 12" rear Z06 Pearl Nickel aluminum wheels paired with summer-only tires¹



RPO Q6B

19" x 10" front and 20" x 12" rear Z06 Chrome aluminum wheels paired with summer-only tires¹



RPO Q6U

19" x 10" front and 20" x 12" rear Z06 Black aluminum wheels paired with summer-only tires¹



RPO Q6J

19" x 10" front and 20" x 12" rear Z06 machined-groove Spectra Gray aluminum wheels paired with summer-only tires¹



RPO Q9C

19" x 10" front and 20" x 12" rear Z06 Black aluminum with Yellow stripe wheels paired with summer-only tires¹



RPO Q9B

19" x 10" front and 20" x 12" rear Z06 Satin Black aluminum with Red stripe wheels paired with summer-only tires¹



RPO Q8U

19" x 10" front and 20" x 12" rear Z06 10-spoke Pearl Nickel aluminum blade wheels paired with summer-only tires¹

¹ Do not use summer only tires in winter conditions, as it would adversely affect vehicle safety, performance and durability. Use only GM-approved tire and wheel combinations. Unapproved combinations may change the vehicle's performance characteristics. For important tire and wheel information, go to <https://my.chevrolet.com/learnAbout/chevrolettires> or see your dealer for details.



2019 MODEL YEAR UPDATES

2019 CORVETTE ZR1

2019 CORVETTE LINEUP

CORVETTE EXPERIENCE

CORVETTE ACCESSORIES

KEY DATES

RESOURCES

CORVETTE EXPERIENCE

CORVETTE MUSEUM DELIVERY WITH INTERIOR LOGO PLAQUE (RPO R8C)

Customers (along with three guests) can take delivery of their new Corvette right on the showroom floor of the National Corvette Museum. Included is a private tour of the Bowling Green Assembly Plant and National Corvette Museum and a personalized demonstration of the car's features by a Corvette product expert. In addition, the customer will also receive a one-year Museum membership, a unique gold exterior decal, a personalized interior plaque and wall plaque.



ENROLLMENT: This R8C option must be specified at the time the order is finalized with a special Ship Code of "184590" to identify a customer's vehicle. Customers must arrive for delivery with the following: proof of ownership, proof of insurance, Dealer Acknowledgment Form, valid operator's license, temporary tag or license plate. Cost is \$990.

PERSONALIZED INTERIOR PLAQUE (RPO BV4)

Customers can personalize their Corvette with a plaque on the front center console of their new car's dash. This plaque features name, Vehicle Identification Number and the Crossed Flags logo¹.



ENROLLMENT: The BV4 option is only available with a sold customer order. Dealer or customer will be contacted after the order is accepted for production and is assigned a targeted production week to confirm plaque information. Cost is \$200.

Contact the National Corvette Museum at (800) 205-4248 for more details regarding the Corvette VIP Buyers Tour and the Corvette Build Book. All Corvette Experience Programs subject to change or elimination without notice.

OFFICIAL CORVETTE HIGH-PERFORMANCE DRIVING SCHOOL

Every new Corvette comes with an invitation to an exclusive two-day course at the Ron Fellows Performance Driving School at Spring Mountain Motor Resort and Country Club in Pahrump, Nevada, (this program is included with the purchase of ZR1 models and available for purchase with Stingray, Grand Sport and Z06 models). Breakfast and lunch each day and an overnight stay are included.



Program cost is \$1,000 (a discounted rate). Must be 16 years of age with a valid driver's license. Valid for the initial purchaser or lessee of a 2018MY or 2019MY Corvette vehicle.

ENROLLMENT: Corvette customers can visit www.corvetteownersschool.com or call 1-800-391-6891 for Program Details and to register. They will need their Vehicle Identification Number (VIN) handy to register and confirm eligibility. Program cost is \$1,000. Valid for one year from delivery.

NEW ZR1 AND Z06 CORVETTE ENGINE BUILD EXPERIENCE RETURNS FOR A LIMITED TIME (RPO PBC)

Owners of 2019 Corvette ZR1 and 2019 Corvette Z06 models can hand build their engines at the GM Performance Build Center in Bowling Green, Kentucky, under the supervision and support of skilled technicians. A personalized nameplate will be added to their engine once completed.



ENROLLMENT: Dealer submits RPO PBC as part of Corvette sold order. Customer will be contacted by a concierge from the National Corvette Museum to facilitate scheduling and logistics. Program cost is \$5,000.

Note: Customer will be responsible for arranging travel, hotel accommodations, local transportation, meals and all related costs. The National Corvette Museum is available to assist customers in planning for their trip.

¹This option is available only with a sold customer order. The dealer will be contacted after the order is accepted for production and is assigned a targeted production week to confirm plaque information. Aftermarket personalized plaques are available through the National Corvette Museum.



2019 MODEL YEAR UPDATES

2019 CORVETTE ZR1

2019 CORVETTE LINEUP

CORVETTE EXPERIENCE

CORVETTE ACCESSORIES

KEY DATES

RESOURCES

CORVETTE ACCESSORIES: EXTERIOR



Z06 Spec Grille System (RZB)/
Carbon Flash Full-Length Dual Racing Stripe Package (SB7)



Visible Carbon-Fiber Side Rocker Kit (S6S)



Black Stingray High Wing Spoiler (SB3)



Torch Red Stingray Blade Spoiler (5ZU)



Z06-Style Spoiler with Clear Bridge (5ZZ/5ZW)



Rear Fascia and Spoiler Protector (VTB)

STRIPES

Full-Length Dual Racing Stripe Package

- Carbon Flash, Crystal Red, Gray, Orange, Silver, Yellow

Carbon Flash Hood Stinger Stripe Package (SFA)

Grand Sport Hash Marks (5K2)

- Torch Red, Shark Gray, Carbon Flash, Yellow, Hyper Green and Volcano Orange

SPOILERS

Stingray High Wing Spoiler* (SB3)

- Blade Silver Metallic, Black, Torch Red, Arctic White, Corvette Racing Yellow Tintcoat, Long Beach Red Metallic and Admiral Blue

Stingray Blade Spoiler* (5ZU)

- Arctic White, Torch Red, Watkins Glen Gray Metallic, Blade Silver Metallic, Corvette Racing Yellow Tintcoat, Black and Admiral Blue

Z06-Style Spoiler with Clear Bridge (Stingray) (5ZZ/5ZW)

- Torch Red, Arctic White, Carbon Flash Metallic, Admiral Blue and Watkins Glen Gray

Z06 and Grand Sport Visible Carbon-Fiber Spoiler (5V5)

SIDE ROCKER KITS

Visible Carbon Fiber (S6S)

Carbon Flash Metallic (SJI)

CORVETTE GROUND EFFECTS

Visible Carbon Fiber (5VM)

Carbon Flash (5W8)

Body Color (VTD)

- Arctic White, Torch Red, Watkins Glen Gray Metallic and Admiral Blue

Rear Fascia and Spoiler Protector (VTB)

Rocker Molding Kit (STI)

PERFORMANCE

Front Brake Ducts (RWM)

Downforce Package (VRO)

Wickerbill Spoiler (SIA)

Performance Induction System (XXX)

*Also available in paint to match.

Most GM parts and accessories sold and installed on a GM vehicle by a GM Dealer or a GM-approved Accessory Distributor/Installer (ADI) before delivery to the customer are covered under the applicable portion (Bumper-to-Bumper, Powertrain, etc.) of the New Vehicle Limited Warranty. If GM accessories are installed after vehicle delivery, or are replaced under the New Vehicle Limited Warranty, they will be covered, parts and labor, for the longer of the following: a) 12 months/12,000 miles (whichever comes first), or b) the balance of the applicable portion of the New Vehicle Limited Warranty. Does not apply to Associated Accessories. See your dealer for details. Accessories sold over the counter, or those not requiring installation, will continue to receive the standard GM Dealer Parts Warranty of 12 months from the date of purchase, parts only, regardless of miles.



2019 MODEL
YEAR UPDATES

2019 CORVETTE
ZR1

2019 CORVETTE
LINEUP

CORVETTE
EXPERIENCE

CORVETTE
ACCESSORIES

KEY DATES

RESOURCES

CORVETTE ACCESSORIES: EXTERIOR (CONTINUED)



Underhood Liner, Crossed Flags Logo on a Black Field (V04)



Splash Guards, Stingray Front and Rear Molded in Black (VQK)



Coupe Transparent Removable Roof Panel (SBT)



Underhood Liner, Stingray Logo on a Black Field (VTE)



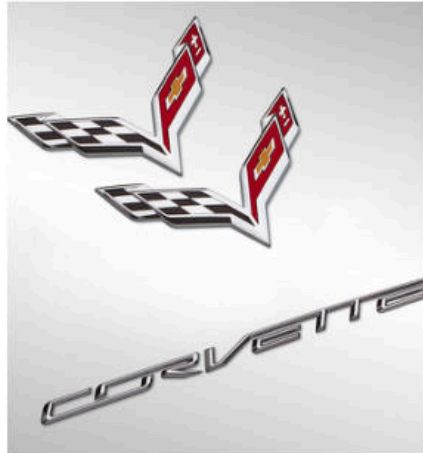
Stingray Front Aero Panel in Carbon Flash (5WH)



Roof Panel Stowage Bag in Black with Corvette Logo (SC7)



Underhood Liner, Grand Sport Logo on a Black Field (V04)



Corvette Bright Chrome Emblems (RIK)



Corvette Carbon Flash Emblems (RIN)



Five-Piece Luggage Set (S2L)

Most GM parts and accessories sold and installed on a GM vehicle by a GM Dealer or a GM-approved Accessory Distributor/Installer (ADI) before delivery to the customer are covered under the applicable portion (Bumper-to-Bumper, Powertrain, etc.) of the New Vehicle Limited Warranty. If GM accessories are installed after vehicle delivery, or are replaced under the New Vehicle Limited Warranty, they will be covered, parts and labor, for the longer of the following: a) 12 months/12,000 miles (whichever comes first), or b) the balance of the applicable portion of the New Vehicle Limited Warranty. Does not apply to Associated Accessories. See your dealer for details. Accessories sold over the counter, or those not requiring installation, will continue to receive the standard GM Dealer Parts Warranty of 12 months from the date of purchase, parts only, regardless of miles.



2019 MODEL YEAR UPDATES

2019 CORVETTE ZR1

2019 CORVETTE LINEUP

CORVETTE EXPERIENCE

CORVETTE ACCESSORIES

KEY DATES

RESOURCES

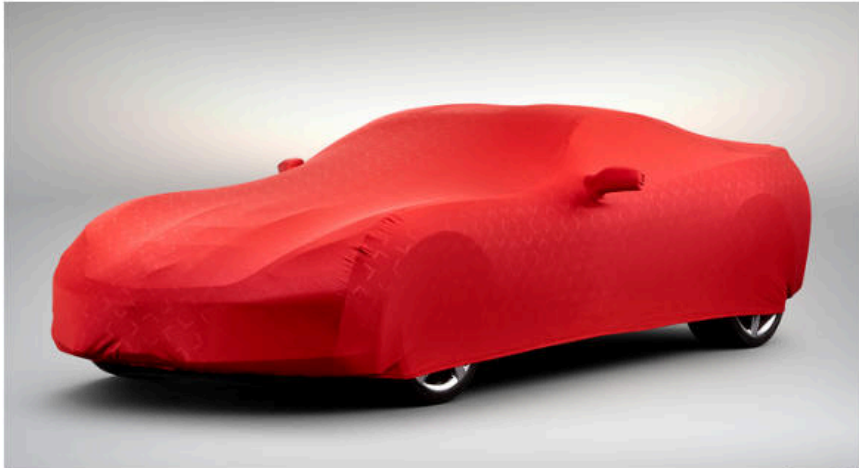
CORVETTE ACCESSORIES: EXTERIOR (CONTINUED)



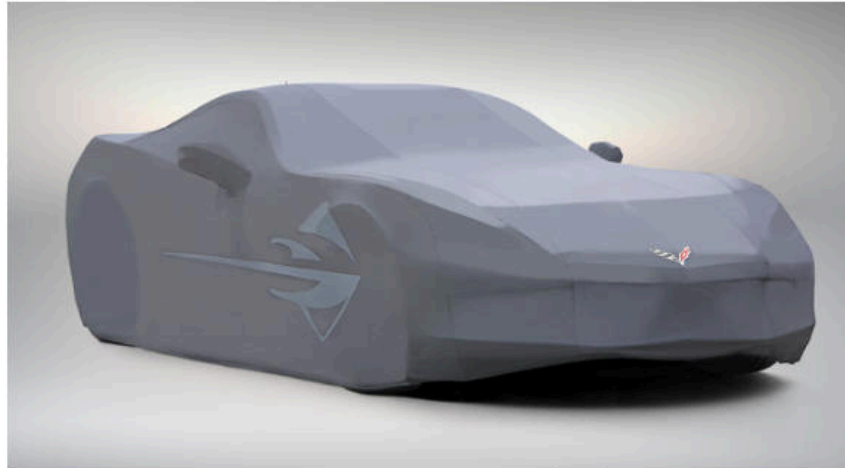
Fully Rendered Corvette C7.R Racing Premium Indoor Dust Cover (WKU)



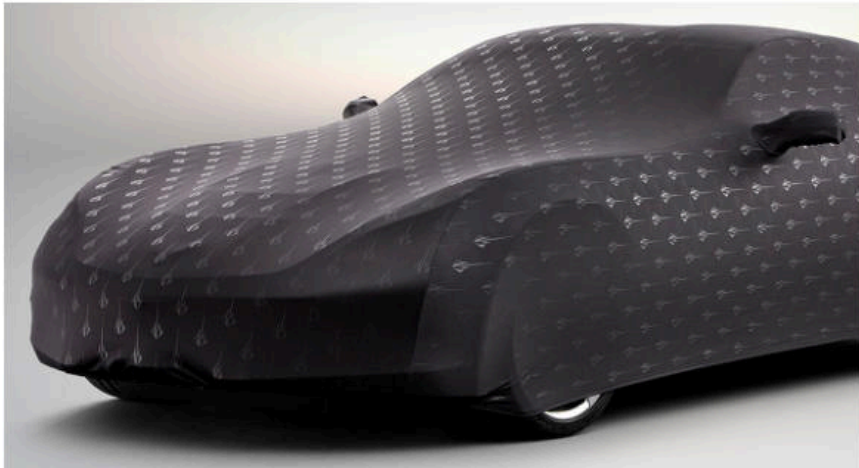
Cool Gray Z06 Logo Premium Outdoor All-Weather Cover (VGS)



Red with Embossed Crossed-Flags Logo Premium Indoor Dust Cover (WKQ)



Gray Stingray Logo Outdoor All-Weather Cover (VRU)



Black with Embossed Stingray Logo Premium Indoor Dust Cover (RWH)



Red Z06 Premium Outdoor All-Weather Cover (VRB)

PREMIUM VEHICLE COVERS

Black Stingray Logo Premium Indoor Dust Cover	(RWH)
Crossed-Flags Logo Premium Indoor Dust Cover	
Kalahari	(WKP)
Gray	(VDN)
Red	(WKQ)
Stingray Logo Outdoor All-Weather Cover	
Black	(RWJ)
Gray	(VRU)
Z06 Premium Outdoor All-Weather Cover	
Blue	(WKR)
Black	(WKS)
Z06 Premium Outdoor All-Weather Cover	
Cool Gray	(VGS)
Red	(VRB)
Fully Rendered Corvette C7.R Racing Premium Indoor Dust Cover	(WKU)
Fully Rendered Grand Sport Premium Indoor Dust Cover	(WLO)
Blue Grand Sport Logo Premium Indoor Dust Cover	(VRX)
ZR1 Premium Indoor Dust Cover (requires ZTK Performance Package)	(VRZ)



Fully Rendered Grand Sport Premium Indoor Dust Cover (WLO)

Most GM parts and accessories sold and installed on a GM vehicle by a GM Dealer or a GM-approved Accessory Distributor/Installer (ADI) before delivery to the customer are covered under the applicable portion (Bumper-to-Bumper, Powertrain, etc.) of the New Vehicle Limited Warranty. If GM accessories are installed after vehicle delivery, or are replaced under the New Vehicle Limited Warranty, they will be covered, parts and labor, for the longer of the following: a) 12 months/12,000 miles (whichever comes first), or b) the balance of the applicable portion of the New Vehicle Limited Warranty. Does not apply to Associated Accessories. See your dealer for details. Accessories sold over the counter, or those not requiring installation, will continue to receive the standard GM Dealer Parts Warranty of 12 months from the date of purchase, parts only, regardless of miles.



2019 MODEL
YEAR UPDATES

2019 CORVETTE
ZR1

2019 CORVETTE
LINEUP

CORVETTE
EXPERIENCE

CORVETTE
ACCESSORIES

KEY DATES

RESOURCES

CORVETTE ACCESSORIES: EXTERIOR (CONTINUED)

CENTER CAPS



Stingray Logo Center Cap (RXJ)



Corvette Jake Logo Black (5ZD)
Corvette Jake Logo Argent (RXH) (not shown)



Corvette Chrome w/ Z51 Logo (VWD)



Corvette Carbon Logo (5ZG)



Corvette Crossed-Flags Logo on Black (5ZC)



Corvette Crossed-Flags Logo on Argent (5ZB)

Most GM parts and accessories sold and installed on a GM vehicle by a GM Dealer or a GM-approved Accessory Distributor/Installer (ADI) before delivery to the customer are covered under the applicable portion (Bumper-to-Bumper, Powertrain, etc.) of the New Vehicle Limited Warranty. If GM accessories are installed after vehicle delivery, or are replaced under the New Vehicle Limited Warranty, they will be covered, parts and labor, for the longer of the following: a) 12 months/12,000 miles (whichever comes first), or b) the balance of the applicable portion of the New Vehicle Limited Warranty. Does not apply to Associated Accessories. See your dealer for details. Accessories sold over the counter, or those not requiring installation, will continue to receive the standard GM Dealer Parts Warranty of 12 months from the date of purchase, parts only, regardless of miles.



2019 MODEL
YEAR UPDATES

2019 CORVETTE
ZR1

2019 CORVETTE
LINEUP

CORVETTE
EXPERIENCE

CORVETTE
ACCESSORIES
◀ ■ ■ ■ ■ ■ ▶

KEY DATES

RESOURCES

CORVETTE ACCESSORIES: INTERIOR



Jet Black Z06 Logo Premium Carpeted Cargo Mat (VLI)



Grand Sport Logo Floor Console Lid in Black (SM7)



Z06 Logo Leather Floor Console Lid in Black (SH3)



Stingray Logo Leather Floor Console Lid in Red (VTF)



Black Z06 Premium Carpeted Front Floor Mats (w/Red Stitching and Z06 Logo) (VYW)



Black Stingray Premium Carpeted Front Floor Mats (w/Adrenaline Red Stitching and Stingray Logo) (VYW)

CORVETTE FLOOR MATS

Premium Carpeted Front Floor Mats w/Z06 Embroidered Logo Available in Black w/Red Stitching	(VYW)
Premium Carpeted Front Floor Mats w/Stingray Embroidered Logo	(VYW)
▪ Available in most interior colors	
Premium Carpeted Front Floor Mats w/Grand Sport Embroidered Logo	(VYW)
▪ Available in most interior colors	

CONSOLE LIDS

Stingray Logo Floor Console Lid	(SH2)
▪ Gray, Adrenaline Red, Jet Black, Kalahari	
Leather Floor Console with Stingray Logo	(VTF)
▪ Gray, Adrenaline Red, Jet Black, Kalahari	
Z06 Floor Logo Console Lid	(SM8)
▪ Black, Kalahari, Adrenaline Red, Jet Black with Red Stitching	
Leather Floor Console with Z06 Logo	(SH3)
▪ Jet Black, Kalahari, Red	
Grand Sport Logo Floor Console Lid	(SM7)
▪ Gray, Adrenaline Red, Black, Kalahari	
Leather Floor Console with Grand Sport Logo	(SM7)
▪ Gray, Adrenaline Red, Black, Kalahari	

CARGO MATS

Black Stingray Logo Premium Carpeted Cargo Mat	(VLI)
Jet Black Z06 Logo Premium Carpeted Cargo Mat	(VLI)
Black Grand Sport Logo Premium Carpeted Cargo Mat	(VLI)
Cargo Security Shade in Black	(VRS)

Most GM parts and accessories sold and installed on a GM vehicle by a GM Dealer or a GM-approved Accessory Distributor/Installer (ADI) before delivery to the customer are covered under the applicable portion (Bumper-to-Bumper, Powertrain, etc.) of the New Vehicle Limited Warranty. If GM accessories are installed after vehicle delivery, or are replaced under the New Vehicle Limited Warranty, they will be covered, parts and labor, for the longer of the following: a) 12 months/12,000 miles (whichever comes first), or b) the balance of the applicable portion of the New Vehicle Limited Warranty. Does not apply to Associated Accessories. See your dealer for details. Accessories sold over the counter, or those not requiring installation, will continue to receive the standard GM Dealer Parts Warranty of 12 months from the date of purchase, parts only, regardless of miles.



2019 MODEL YEAR UPDATES

2019 CORVETTE ZR1

2019 CORVETTE LINEUP

CORVETTE EXPERIENCE

CORVETTE ACCESSORIES

KEY DATES

RESOURCES

CORVETTE ACCESSORIES: INTERIOR (CONTINUED)



Door Sill Plates with Stingray Logo (V8X)

INTERIOR TRIM BADGES

LT1 Performance Logo w/NPP Performance Exhaust	(SM4)
LT1 Performance Logo	(SM5)
Black with Stingray Logo	(SM2)
Chrome with Stingray Logo	(5YN)
Black with Jake Logo	(SM3)
DOOR SILL PLATES	
Grand Sport Logo	(SGI)
Stingray Logo	(V8X)



Black Interior Trim Badge with Stingray Logo (SM2)



Chrome Interior Trim Badge with Stingray Logo (5YN)



Black with Jake Logo (SM3)

Most GM parts and accessories sold and installed on a GM vehicle by a GM Dealer or a GM-approved Accessory Distributor/Installer (ADI) before delivery to the customer are covered under the applicable portion (Bumper-to-Bumper, Powertrain, etc.) of the New Vehicle Limited Warranty. If GM accessories are installed after vehicle delivery, or are replaced under the New Vehicle Limited Warranty, they will be covered, parts and labor, for the longer of the following: a) 12 months/12,000 miles (whichever comes first), or b) the balance of the applicable portion of the New Vehicle Limited Warranty. Does not apply to Associated Accessories. See your dealer for details. Accessories sold over the counter, or those not requiring installation, will continue to receive the standard GM Dealer Parts Warranty of 12 months from the date of purchase, parts only, regardless of miles.



2019 MODEL
YEAR UPDATES

2019 CORVETTE
ZR1

2019 CORVETTE
LINEUP

CORVETTE
EXPERIENCE

CORVETTE
ACCESSORIES

KEY DATES

RESOURCES

KEY DATES: 2018 CORVETTE

	Q4 2017	Q1 2018	Q2 2018
PRODUCT		2019MY Stingray, Grand Sport and Z06 Production Begins (January) 2019MY ZR1 Production Begins (March)	
DEALER/FIELD	2019MY Stingray, Grand Sport and Z06 Ordering Begins (November)	2019MY ZR1 Ordering Begins (January)	
MEDIA/ADVERTISING		2019MY Corvette "Build & Price" live on Chevy.com (February)	



2019 MODEL YEAR UPDATES

2019 CORVETTE ZR1

2019 CORVETTE LINEUP

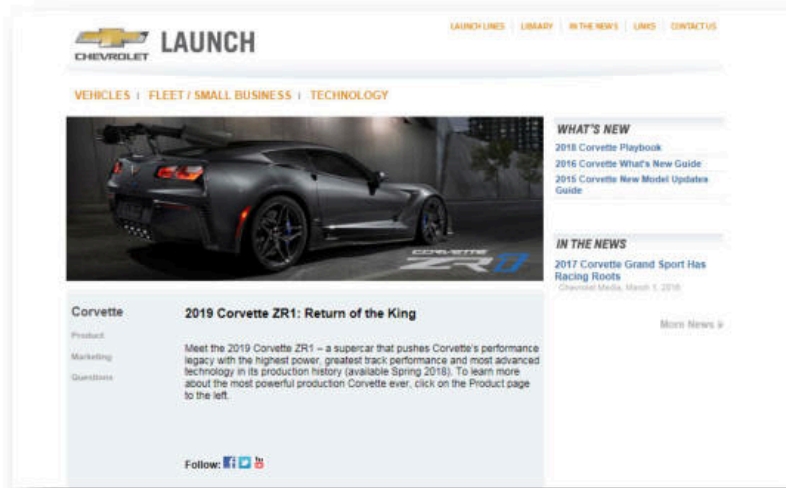
CORVETTE EXPERIENCE

CORVETTE ACCESSORIES

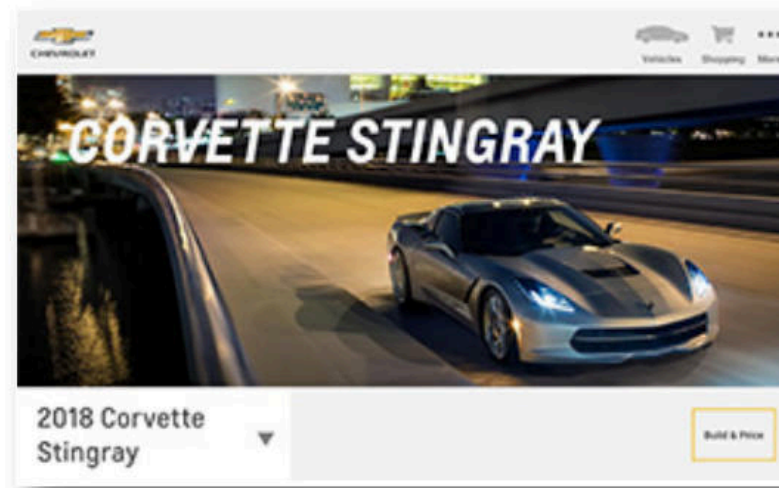
KEY DATES

RESOURCES

RESOURCES



GMLAUNCH.COM



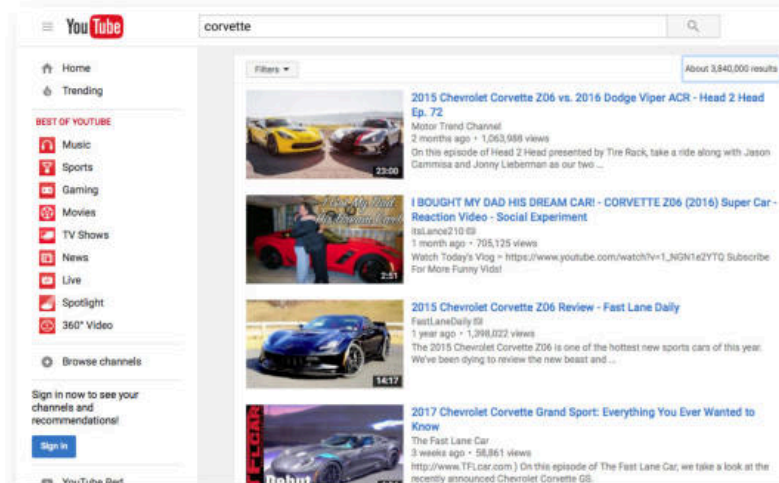
CORVETTE ON CHEVY.COM



CENTER OF LEARNING



GM MEDIA WEBSITE



CHEVROLET YOUTUBE CHANNEL



GM PROGRAM INFORMATION



2019 MODEL YEAR UPDATES

2019 CORVETTE ZR1

2019 CORVETTE LINEUP

CORVETTE EXPERIENCE

CORVETTE ACCESSORIES

KEY DATES

RESOURCES