

**CRUZE 2018**

**CHEVROLET**





Cruze Premier Sedan in Kinetic Blue Metallic (extra-cost color) with available features including the RS Package. Cruze Premier Hatch in Orange Burst Metallic (limited availability, extra-cost color) with available features including the RS Package.

Stay connected even when you break away from the pack.

**FIND NEW ROADS™**

Cruze Premier Sedan in Kinetic Blue Metallic (extra-cost color) with available features including the RS Package. Cruze Premier Hatch in Orange Burst Metallic (limited availability, extra-cost color) with available features including the RS Package.



## CHART YOUR OWN COURSE.

The 2018 Chevrolet Cruze and Cruze Hatchback make it easier than ever to explore life's possibilities. A suite of available technologies including support for Apple CarPlay™<sup>1</sup> and Android Auto™<sup>2</sup> and an available Wi-Fi® hotspot<sup>3</sup> keeps your life connected. The design is smart and sporty. The interior is spacious and stylish. It's no wonder Cruze has received so many accolades.

Cruze is quiet, powerful and really fun to drive. LT Sedan offers up to an EPA-estimated 40 MPG highway<sup>4</sup> and a maximum highway range of up to 540 miles per tank.<sup>5</sup> Premier Sedan offers 39 MPG highway,<sup>4</sup> while Premier Hatch offers 37 MPG highway.<sup>4</sup> With nimble handling and fuel-efficient engines, you can go as far as your imagination can take you.

<sup>1</sup> Vehicle user interface is a product of Apple and its terms and privacy statements apply. Requires compatible iPhone and data plan rates apply. <sup>2</sup> Vehicle user interface is a product of Google and its terms and privacy statements apply. Requires the Android Auto app on Google Play and an Android compatible smartphone running Android 5.0 Lollipop or higher and data plan rates apply. <sup>3</sup> Requires a compatible mobile device, active OnStar service and data plan. <sup>4</sup> EPA-estimated MPG city/highway; Cruze L/LS/LT Sedan with 1.4L 4-cylinder engine and manual transmission 27/40; Cruze LS/LT Sedan with 1.4L 4-cylinder engine and automatic transmission 29/40; Cruze Premier Sedan with 1.4L 4-cylinder engine 29/39; Cruze Premier Hatchback with 1.4L 4-cylinder engine 28/37. <sup>5</sup> Based on EPA-estimated 40 MPG highway for Cruze LT Sedan with 1.4L 4-cylinder engine and automatic transmission and fuel tank capacity. Your range may be less.

## EXTERIOR DESIGN

**1. REACH FOR MORE.** Body-color door handles with a chrome strip add visual interest and a heightened sense of style. Standard on Premier.

**2. CUT THROUGH THE EVERYDAY.** Included with the RS Package, a sleek spoiler lends a sense of movement to the sculpted rear view.

**3. EXPLORE THE OPTIONS.** Included on Premier with the available RS Package, 18-inch machined-face aluminum wheels provide panache, mile after mile.

**4. LIGHT A NEW PATH.** Dual-function projector-beam headlamps with signature LED daytime running lamps are standard on LT and Premier.



Cruze Premier in Kinetic Blue Metallic (extra-cost color) with available features including the RS Package.



**BOLD STYLE TAKES YOU PLACES.** Expressive exterior styling and a swept roofline give Cruze a dynamic silhouette. The dramatic lines are aero-efficient and provide an exciting aesthetic.

**A BRIGHT FUTURE.** Available LED daytime running lamps light the way with dazzling efficiency. A roof panel-integrated center high-mounted LED stoplamp adds to the refined look of the vehicle.

**A STRONG FIRST IMPRESSION.** A prominent chrome grille surround wraps into the headlamps, creating a wide front face. Body-color door handles flow into the shoulder line, contributing to the fluid design.

**DETAILS MATTER.** Athletic design moves to the next level with the available RS Package, which includes front and rear sport fascias, a rear spoiler, rockers and foglamps. On Premier, the RS Package includes 18-inch wheels that complement its strong style statement.

*HELPING YOU MOVE RELENTLESSLY  
TOWARD YOUR GOALS.*



Cruze Premier Sedan in Graphite  
Metallic with available features.

**CRUZE HATCHBACK**

**GIVE YOURSELF MORE ROOM  
TO DO MORE.**



Cruze Hatch offers sporty style and the versatility to get you through all of life's adventures. Whether hauling a pair of subwoofers to a show or carrying a carload of gear to the perfect campsite, you've got all the space you need without losing an inch of style.

**THE HAPPENING HATCHBACK.** Building on signature Chevrolet design DNA, Cruze Hatch has a modern look that's expressed in flowing, sculpted lines. The result is an aggressive, aerodynamic shape that takes you everywhere.

**THE DIESEL OPTION.** The new Cruze Diesel Hatch delivers savvy style with the efficiency of a 1.6L Turbo-Diesel engine. The available Leather Package on the Diesel model includes leather-appointed seating and other upscale appointments.

Cruze Diesel Hatchback in Graphite Metallic with available features including the RS Package.

*"... as complete and gratifying a ride  
as anything in its competitive set."*

*— Autoweek.com*





<sup>1</sup> Cargo and load capacity limited by weight and distribution.

**1. CUT THROUGH CONVENTION.**

An aerodynamic spoiler, featured in the available RS Package, improves airflow and lends sleek style to every ride.

**2. YOU CAN TAKE IT WITH YOU.** A high rear profile and 60/40 split-folding rear seats make loading and unloading large cargo a snap.

**3. BIG PERSONALITY.** Savvy and functional, Cruze Hatch offers style, versatility and well-integrated storage with 47.2 cubic feet<sup>1</sup> of cargo space with the rear seats folded flat.



WANT MORE INFO?  
GO TO [CHEVY.COM/CRUZE](http://CHEVY.COM/CRUZE)

**INTERIOR DESIGN**



**MAKE A PERSONAL CONNECTION WHILE  
MAINTAINING YOUR COMFORT ZONE.**

Cruze Premier Sedan interior in  
Jet Black with leather appointments  
and available features.



Cruze Premier Sedan interior in Jet Black with leather appointments and available features.

<sup>1</sup>The system wirelessly charges one PMA- or Qi-compatible mobile device. Some devices require an adaptor or back cover. To check for phone or other device compatibility, visit [my.chevrolet.com/learn](http://my.chevrolet.com/learn).

The sleek design story continues in an interior created to make every moment of the journey more rewarding. Cruze blends good looks and great functionality with an intuitive layout and plenty of room for friends and all of life's other necessities.

**FIRST-CLASS DETAILS.** Cruze was crafted with the thought that what covers the seats is as important as how

comfortable they are. Premium surfaces abound, from meticulously stitched available leather-appointed seats to Galvano chrome accents.

**ENJOY PERSONAL SPACE.** With ample front and rear leg room, you can stretch out and enjoy the ride. Generous rear knee clearance allows for ease of entry and exit, which comes in handy on a night out with friends.

**COMFORT AT YOUR COMMAND.**

Cruze turns the most ordinary trip into an occasion. Chase the chill away with available heated front and rear outboard seats. A heated steering wheel, standard on Cruze Premier, is ideal for brisk days.

**UNCOMMON EXTRAS.** The signature dual cockpit interior provides ingenious storage for the important things, and wireless charging<sup>1</sup> is available on Cruze Premier. There's a slot to tuck away your smartphone in the center armrest, plus additional storage in the center console.

**1. PREMIUM ACCOMMODATIONS.**

Available heated leather-appointed seats offer welcome warmth to outboard rear-seat passengers.

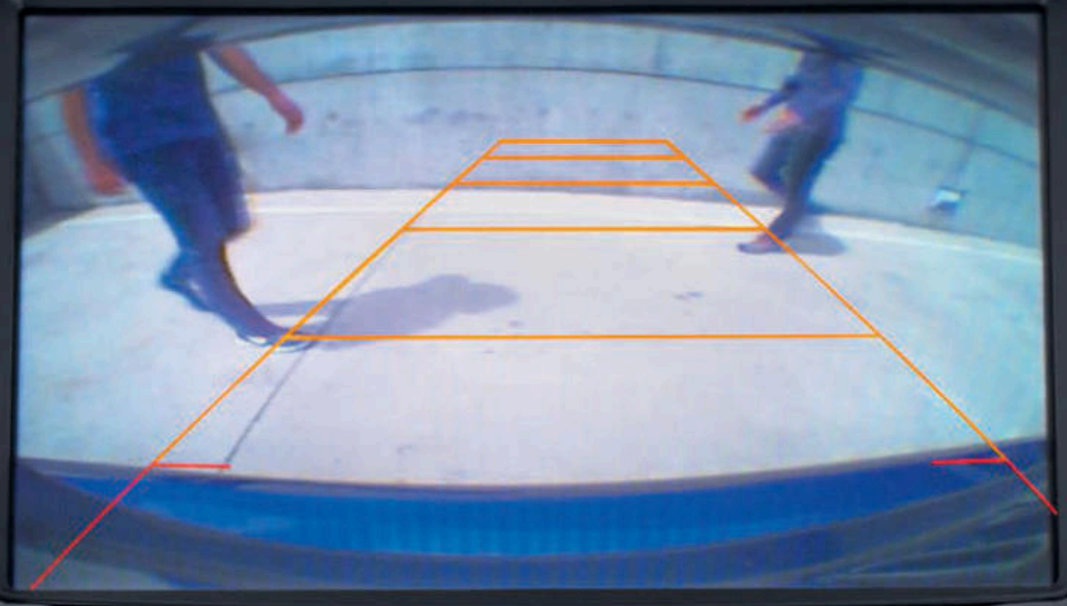
**2. DON'T FORGET YOUR LAPTOP.** Or let lunches linger in the back seat. Rear Seat Reminder<sup>1</sup> activates when the rear doors are opened and closed up to 10 minutes before or anytime while your vehicle is on, so when you turn off the engine, under certain conditions, you will get a reminder to double-check for valuables left behind.

**3. INSTANT GRATIFICATION.** Handy door controls keep comfort within easy reach. The standard express-down feature powers down the driver and front passenger windows with a flick of your finger.

**4. PULLING IT ALL TOGETHER.** Included with available leather-appointed seating, stylish contrast stitching on the seats proves that details really do matter.



<sup>1</sup> Does not detect people or items. Always check rear seat before exiting.



## TECHNOLOGY



<sup>1</sup> Vehicle user interface is a product of Apple and its terms and privacy statements apply. Requires compatible iPhone and data plan rates apply. <sup>2</sup> Data plan rates apply. <sup>3</sup> MyLink functionality varies by model. Full functionality requires compatible Bluetooth and smartphone, and USB connectivity for some devices. MyLink on Cruze does not include CD player. <sup>4</sup> Visit [my.chevrolet.com/learn](http://my.chevrolet.com/learn) for vehicle and smartphone compatibility. <sup>5</sup> Requires a compatible mobile device, active OnStar service and data plan. 4G LTE service available in select markets. Visit [onstar.com](http://onstar.com) for coverage map, details and system limitations. Data plans provided by AT&T. <sup>6</sup> If you decide to continue service after your trial, the subscription plan you choose will automatically renew thereafter and you will be charged according to your chosen payment method at then-current rates. Fees and taxes apply. To cancel you must call SiriusXM at 1-866-635-2349. See Sirius XM Customer Agreement for complete terms at [siriusxm.com](http://siriusxm.com). All fees and programming subject to change.

Apple CarPlay is a trademark of Apple Inc. iPhone is a trademark of Apple Inc., registered in the U.S. and other countries.

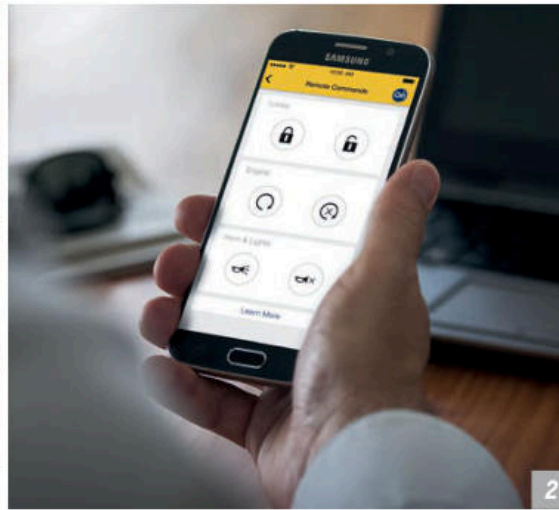
### **Apple CarPlay COMPATIBILITY.**

With Apple CarPlay,<sup>1</sup> you can simply and smartly connect with some of your most used iPhone<sup>®</sup> features, including Maps, Music, Messages and Phone, right on your Cruze display. You can even interact with some of your favorite audio apps, such as iHeartRadio<sup>2</sup> and Spotify<sup>2</sup>

**TECHNOLOGICAL ZEN.** The available 8-inch or standard 7-inch diagonal full-color Chevrolet MyLink<sup>3</sup> Radio display lets you stay in tune with your Cruze. Connect your compatible smartphone via Bluetooth<sup>®</sup> wireless technology<sup>4</sup> and listen to music, get directions or make phone calls.

**Wi-Fi IN YOUR CRUZE.** Chevrolet offers OnStar 4G LTE plus an available built-in Wi-Fi<sup>®</sup> hotspot,<sup>5</sup> providing a fast and reliable connection with bandwidth for up to seven devices, offering a better in-vehicle experience than your smartphone.

**ENJOY MUSIC AND MORE.** SiriusXM,<sup>6</sup> standard on LT, Diesel and Premier for 3 months, lets you choose from over 150 channels of commercial-free music, live sports, news, talk and entertainment, all at your fingertips, 24/7. You can listen everywhere – in your vehicle, at home on your computer, or on your smartphone.



**1** Vehicle user interface is a product of Google and its terms and privacy statements apply. Requires the Android Auto app on Google Play and an Android compatible smartphone running Android 5.0 Lollipop or higher and data plan rates apply. **2** MyLink functionality varies by model. Full functionality requires compatible Bluetooth and smartphone, and USB connectivity for some devices. MyLink on Cruze does not include CD player. **3** Requires active OnStar service, compatible device, factory-installed remote start and power locks. Data rates apply. Visit [onstar.com](http://onstar.com) for details and system limitations. **4** Map coverage available in the United States, Puerto Rico and Canada.

Android, Android Auto, Google, Google Play and other marks are trademarks of Google Inc.

**1. EASY ACCESS TO YOUR SMARTPHONE.** With Android Auto™ compatibility, you can interact with select smartphone apps. This system takes some of your Android™ phone's features and puts them on the Chevrolet MyLink<sup>2</sup> display in a smart, simple manner. You can access your phone, text messages, music, navigation and more.

**2. BE IN TUNE WITH YOUR CRUZE.** Simply download the myChevrolet Mobile App<sup>3</sup> to your compatible smartphone and (if vehicle is properly equipped) you'll be able to start or turn off the engine, lock/unlock the doors, send destinations to your available navigation<sup>4</sup> system, view key vehicle diagnostic information, set parking reminders and more.

**3. TECH AT YOUR FINGERTIPS.** Use available steering wheel-mounted controls and voice recognition capabilities to take calls, receive text messages or play your favorite tunes hands-free.

**4. INSIDE INFORMATION.** The available 4.2-inch diagonal color Driver Information Center allows you to monitor speed and set an audible speed warning, provides turn-by-turn navigation<sup>4</sup> (if equipped) and so much more.

## PERFORMANCE

OFFERS UP TO

# 52

MPG HIGHWAY<sup>1</sup> WITH  
TURBO-DIESEL ENGINE

and available 6-speed  
manual transmission

# 240

LB.-FT. OF TORQUE

# 1.6L

TURBO-DIESEL ENGINE

Cruze Diesel Sedan in Arctic Blue  
Metallic with available features.



<sup>1</sup> EPA-estimated 52 MPG highway for Cruze Diesel Sedan with 1.6L Turbo-Diesel engine and manual transmission, 47 MPG highway with automatic transmission. <sup>2</sup> Based on EPA-estimated 52 MPG highway for Cruze Diesel Sedan with available 1.6L Turbo-Diesel engine and manual transmission. <sup>3</sup> EPA-estimated 48 MPG highway for Cruze Diesel Hatchback with 1.6L Turbo-Diesel engine and manual transmission, 45 MPG highway with automatic transmission. <sup>4</sup> EPA estimate for Cruze LS/LT Sedan with available 6-speed automatic transmission. <sup>5</sup> Based on EPA-estimated 40 MPG highway for Cruze LT Sedan with 1.4L 4-cylinder engine and automatic transmission and fuel tank capacity. Your range may be less. <sup>6</sup> Cruze LS/LT Sedan with available 6-speed automatic transmission. <sup>7</sup> Based on initial vehicle movement.

### **THIS DIESEL MAKES A DIFFERENCE.**

Ready to take things up a notch? Meet the 2018 Cruze Diesel Sedan, featuring a 1.6L turbocharged engine that offers up to an incredible 52 MPG on the highway!<sup>1</sup> That's the highest highway fuel economy offered by any non-hybrid/non-electric vehicle in America;<sup>2</sup> so you'll always be ready to go the extra mile.



### **INTRODUCING CRUZE DIESEL**

**HATCHBACK.** The new Cruze Diesel Hatchback offers exceptional efficiency, with up to 48 MPG highway.<sup>3</sup> The ECOTEC<sup>®</sup> 1.6L Turbo-Diesel is available with a choice of a 6-speed manual or a 9-speed automatic transmission.

**ECOTEC EFFICIENCY.** Cruze offers a combination of power and efficiency that can help keep you going longer between fill-ups. The ECOTEC 1.4L turbocharged

engine paired with the available 6-speed automatic transmission provides a premium driving experience that offers up to 40 MPG highway<sup>4</sup> and a maximum highway range of up to 540 miles per tank<sup>5</sup>

**STOPPING POWER.** Control is important in a vehicle that can take you from 0 to 60 mph in 7.7 seconds.<sup>6,7</sup> And Cruze Sedan can do just that. Standard Duralife<sup>™</sup> brake rotors on all models feature corrosion-resistant

technology, providing protection against rust that can help prevent steering wheel shudder during braking.

**SMOOTH IN THE TURN.** Cruze steering, suspension and braking systems are designed to deliver tight handling that make every model a blast to drive. Advanced chassis systems provide nimble, agile handling and comfort, whatever scenic route you choose to take.

## SAFETY

**SAFETY STARTS WITH YOU.** Safety features are no substitute for the driver's responsibility to operate the vehicle in a safe manner. The driver should remain attentive to traffic, surroundings and road conditions at all times. Read the vehicle Owner's Manual for important feature limitations and information.



## WE HELP YOU COVER YOUR BACK, FRONT AND SIDES.



**FORWARD COLLISION ALERT WITH FOLLOWING DISTANCE INDICATOR.** This available feature continually monitors how close your vehicle is to the vehicle in front of you. If the system determines that a front-end collision with a detected vehicle is imminent, it alerts the driver to a potential crash. It also warns the driver if their Cruze is following a detected vehicle much too closely.



**LANE KEEP ASSIST WITH LANE DEPARTURE WARNING.** At speeds above 37 mph, this available camera-based system monitors road lines and will gently turn the steering wheel if the vehicle begins changing lanes without the use of a turn signal.



**AVAILABLE LANE CHANGE ALERT WITH SIDE BLIND ZONE ALERT.** Radar sensors in the rear corners of the vehicle help detect fast-approaching vehicles in the adjacent lanes as well as vehicles in the side mirror blind zones. Amber icons in the exterior mirrors indicate a vehicle's presence.



**REAR CROSS TRAFFIC ALERT.** This available radar-based feature alerts you to crossing traffic behind your Cruze when backing up. Audible warnings, as well as visual alerts on the rear vision camera screen, are triggered if approaching vehicles are detected.



**REAR VISION CAMERA.** When traveling in reverse at low speeds, the standard rear vision camera provides a real-time picture of the area immediately behind your Cruze on the touch-screen display.



**REAR PARK ASSIST.** This available feature helps you back up by sounding an audible alert when it detects certain stationary objects in close proximity behind the vehicle.



**INTELLIBEAM HEADLAMPS.** When oncoming headlamps are sensed or when taillamps are detected in front of you, the available IntelliBeam® high beam assist intuitively adjusts between low and high beams.

**1. NERVES OF STEEL.** Front and rear “crush zones” are designed to compress in a controlled manner, helping absorb and channel energy away from the cabin.

**2. LEARN BETTER DRIVING HABITS.** Perfect for new drivers and those who want to improve their skills, Teen Driver technology helps to encourage better driving habits in a number of ways, like muting the audio system when front-seat occupants aren’t wearing their safety belts, and giving audible and visual warnings when the vehicle is traveling over a predetermined speed.

**3. AUTOMATIC HELP.** In a crash, built-in sensors can automatically connect you to a specially trained OnStar Advisor who will help you get the assistance you need – even if you can’t ask for it. Advisors can use GPS technology to pinpoint your location and request emergency help. OnStar Automatic Crash Response<sup>1</sup> is included in the OnStar Guidance Plan<sup>2</sup> limited service trial.



1



2



<sup>1</sup> Visit [onstar.com](http://onstar.com) for vehicle availability, details and system limitations. OnStar acts as a link to existing emergency service providers. Not all vehicles may transmit all crash data.

<sup>2</sup> Visit [onstar.com](http://onstar.com) for coverage map, details and system limitations.

“★★★★★”  
**OVERALL VEHICLE  
SCORE FOR SAFETY!**

— NATIONAL HIGHWAY TRAFFIC SAFETY  
ADMINISTRATION



<sup>1</sup> Government 5-Star Safety Ratings are part of the National Highway Traffic Safety Administration's (NHTSA's) New Car Assessment Program ([www.SaferCar.gov](http://www.SaferCar.gov)).

Cruze Premier Sedan in  
Kinetic Blue Metallic (extra-cost  
color) with available features  
including the RS Package.

## SPECIAL FEATURES



Cruze Redline Edition, shown in Silver Ice Metallic, includes 18" Black-painted aluminum wheels with Red accents, Black Cruze emblems with Red outline, and Black bowtie emblems, mirror caps, beltline moldings, front grille surround and foglamp surround. Available on LT.



Front foglamps included in the available RS Package.



Wireless charging<sup>1</sup> included in the available Enhanced Convenience Package on Premier.

<sup>1</sup> The system wirelessly charges one PMA- or Qi-compatible mobile device. Some devices require an adaptor or back cover. To check for phone or other device compatibility, visit [my.chevrolet.com/learn](http://my.chevrolet.com/learn) for details.

## WHEELS



18" Machined-Face Aluminum  
(Included on Premier with available  
RS Package)



15" Steel with Painted Wheel Cover  
(Standard on L and LS)



16" Aluminum (Standard on LT)



17" Aluminum (Standard on Premier)



18" Black-Painted Aluminum with Red Accents  
(Available on LT with Redline Edition)

## COLORS



SUMMIT WHITE



SILVER ICE METALLIC



GRAPHITE METALLIC<sup>1</sup>



PEPPERDUST METALLIC<sup>1</sup>



RED HOT<sup>2</sup>



CAJUN RED TINTCOAT<sup>1,3</sup>



ARCTIC BLUE METALLIC<sup>2</sup>



KINETIC BLUE METALLIC<sup>1,3</sup>



ORANGE BURST METALLIC<sup>3,4,5</sup>



SATIN STEEL METALLIC<sup>1,6</sup>



NIGHTFALL GRAY METALLIC<sup>5</sup>



MOSAIC BLACK METALLIC<sup>2,6</sup>



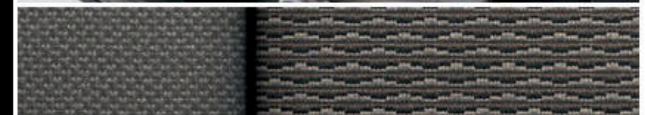
BLACK<sup>5</sup>

<sup>1</sup> Not available on L and LS. <sup>2</sup> Not available on L. <sup>3</sup> Extra-cost color. <sup>4</sup> Limited availability. <sup>5</sup> Hatchback only. <sup>6</sup> Sedan only.

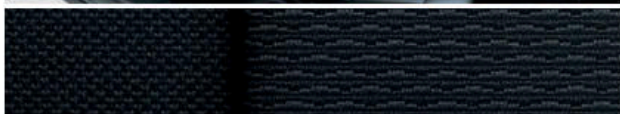
# FABRICS



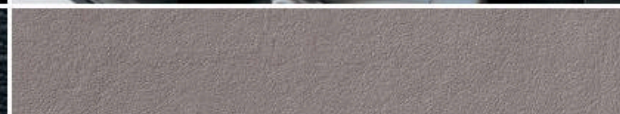
Jet Black Leather Appointments with Jet Black Accents<sup>1</sup>



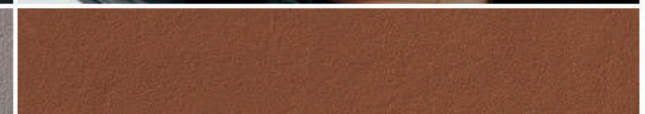
Medium Atmosphere Cloth with Dark Atmosphere Accents<sup>2,3</sup>



Jet Black Cloth with Jet Black Accents<sup>4</sup>



Medium Atmosphere Leather Appointments with Dark Atmosphere Accents<sup>5,5</sup>



Kalahari Leather Appointments with Jet Black Accents<sup>5,6</sup>

<sup>1</sup> Standard on Premier. <sup>2</sup> Available on LS and LT. <sup>3</sup> Not available with Red Hot exterior color. <sup>4</sup> Standard on L, LS and LT. <sup>5</sup> Available on Premier. <sup>6</sup> Not available with Red Hot, Arctic Blue Metallic and Kinetic Blue Metallic exterior colors.

## SELECT VEHICLE FEATURES

### CRUZE L

1.4L DOHC turbocharged 4-cylinder engine

6-speed manual transmission

10 air bags<sup>1</sup>

StabiliTrak<sup>®</sup> Electronic Stability Control System with Traction Control

OnStar Guidance Plan<sup>2</sup> with limited service trial, including Automatic Crash Response, Stolen Vehicle Assistance, Roadside Assistance, Turn-by-Turn Navigation, Advanced Diagnostics and more (trial excludes Hands-Free Calling Minutes)

Theft-deterrent system with content-theft alarm and engine immobilizer

Power-programmable door locks with lockout protection and rear-door child safety locks

Teen Driver technology

Rear vision camera

Chevrolet MyLink<sup>3</sup> Radio with 7-inch diagonal color touch-screen display

4-speaker sound system

Bluetooth<sup>®</sup> wireless technology<sup>4</sup> for select phones

USB port<sup>5</sup> auxiliary input jack and 12-volt power outlet in front storage bin

OnStar 4G LTE and built-in Wi-Fi<sup>®</sup> hotspot<sup>6</sup> for up to 7 devices, includes data trial for 3 months or 3 GB (whichever comes first)

Remote Keyless Entry

Power windows with express-down

Interior overhead courtesy lamp and rear overhead courtesy lamp

Rear folding seat

Floor-mounted sliding front console (manual transmission models only)

**CRUZE LS** In addition to or replacing L features, LS includes:

Deluxe 3-spoke steering wheel

Carpeted front and rear floor mats

**CRUZE LT** In addition to or replacing LS features, LT includes:

Projector-style headlamps and LED daytime running lamps

Outside heated power-adjustable manual-folding body-color mirrors

Rear intermittent wiper with washer (Hatchback only)

Bright beltline moldings

16" aluminum wheels

Compact spare tire

SiriusXM Satellite Radio<sup>7</sup> All Access Package with 3-month trial subscription

6-speaker sound system

Cruise control with Set and Resume Speed and steering wheel-mounted controls

Steering wheel-mounted controls for audio and phone

Interior overhead courtesy lamp and dual reading lamps

Driver and front passenger seatback map pockets

Rear 60/40 split-folding seat, includes center fold-down armrest with two cup holders

**CRUZE DIESEL** In addition to or replacing LT features, Cruze Diesel includes:

6-speed manual or 9-speed automatic transmission

Remote vehicle starter system (automatic transmission models only)

8-way power driver-seat adjuster

**CRUZE PREMIER** In addition to or replacing LT features, Premier includes:

17" aluminum wheels

Heated outside mirrors with turn signal indicators

Keyless Open and Start

Interior ambient lighting and rear courtesy lighting with dual reading lamps

Heated driver and front passenger seats

<sup>1</sup> A NOTE ON CHILD SAFETY: Always use safety belts and the correct child restraint for your child's age and size, even with air bags. Even in vehicles equipped with the Passenger Sensing System, children are safer when properly secured in a rear seat in the appropriate infant, child or booster seat. Never place a rear-facing infant restraint in the front seat of any vehicle equipped with an active frontal air bag. See the Owner's Manual and the child safety seat instructions for more safety information. <sup>2</sup> Visit [onstar.com](http://onstar.com) for coverage map, details and system limitations. OnStar acts as a link to existing emergency service providers. <sup>3</sup> MyLink functionality varies by model. Full functionality requires compatible Bluetooth and smartphone, and USB connectivity for some devices. MyLink on Cruze does not include CD player. Map coverage available in the United States, Puerto Rico and Canada. <sup>4</sup> Visit [my.chevrolet.com/learn](http://my.chevrolet.com/learn) for vehicle and smartphone compatibility. <sup>5</sup> Not compatible with all devices. <sup>6</sup> Requires a compatible mobile device, active OnStar service and data plan. 4G LTE service available in select markets. Visit [onstar.com](http://onstar.com) for coverage map, details and system limitations. Data plans provided by AT&T. <sup>7</sup> If you decide to continue service after your trial, the subscription plan you choose will automatically renew thereafter and you will be charged according to your chosen payment method at then-current rates. Fees and taxes apply. To cancel you must call SiriusXM at 1-866-635-2349. See SiriusXM Customer Agreement for complete terms at [siriusxm.com](http://siriusxm.com). All fees and programming subject to change. For more information about Travel Link and NavTraffic, visit [siriusxm.com/infotainment](http://siriusxm.com/infotainment).

## SPECIFICATIONS

● STANDARD ○ AVAILABLE – NOT AVAILABLE

	L	LS	LT	DIESEL	PREMIER
<b>EXTERIOR</b>					
Door handles: Body-color	●	●	●	●	–
Body-color with chrome strip	–	–	–	–	●
Foglamps	–	–	○ <sup>1</sup>	○ <sup>1</sup>	○ <sup>1</sup>
Glass: Solar absorbing	●	●	●	●	●
Headlamps with automatic exterior lamp control and delay: Halogen composite	●	●	–	–	–
Halogen	–	–	●	●	●
IntelliBeam high beam assist	–	–	–	–	○ <sup>2</sup>
Power-adjustable manual-folding body-color mirrors	●	●	–	–	–
Heated	–	–	●	●	–
Heated with turn signal indicators	–	–	–	–	●
<b>ENGINE/CHASSIS</b>					
Engine: 1.4L DOHC turbocharged 4-cylinder with Continuously Variable Valve Timing, 153 hp and 177 lb.-ft. of torque	●	●	●	–	●
1.6L Turbo-Diesel DOHC 4-cylinder with 153 hp and 177 lb.-ft. of torque	–	–	–	●	–
Steering: Power, electric-assisted, rack-mounted	●	●	●	●	●
Suspension: Front, independent MacPherson struts	●	●	●	●	●
Rear, compound crank	●	●	●	●	–
Rear, compound crank with Z-link	–	–	–	○	●
Transmission: 6-speed manual	●	●	○ <sup>1</sup>	○	–
6-speed automatic; electronically controlled with overdrive and stop/start technology	–	○	○	–	●
9-speed automatic; electronically controlled with overdrive and stop/start technology	–	–	–	○	–
<b>SAFETY &amp; SECURITY</b>					
10 air bags: <sup>3</sup> Driver and front passenger frontal, includes Passenger Sensing System; front and rear seat-mounted side-impact; roof rail-mounted head-curtain for front and rear outboard seating positions; driver and front passenger knee	●	●	●	●	●

	L	LS	LT	DIESEL	PREMIER
<b>SAFETY &amp; SECURITY (CONTINUED)</b>					
Brakes: 4-wheel antilock, 4-wheel disc; Duralife brake rotors with corrosion-resistant technology	●	●	●	●	●
OnStar Guidance Plan <sup>4</sup> with limited service trial, including Automatic Crash Response, Stolen Vehicle Assistance, Roadside Assistance, Turn-by-Turn Navigation, Advanced Diagnostics and more (trial excludes Hands-Free Calling Minutes)	●	●	●	●	●
Teen Driver technology	●	●	●	●	●
Tire Pressure Monitoring System (excludes spare tire)	●	●	●	●	●
<b>INTERIOR</b>					
Climate control: Single-zone, manual	●	●	●	●	●
Single-zone, automatic	–	–	–	–	○ <sup>5</sup>
Console: Center, floor-mounted	●	–	–	–	–
Floor-mounted with armrest (sliding armrest on manual transmission models)	–	●	●	●	●
Cruise control: Electronic with Set and Resume Speed; steering wheel-mounted controls	–	–	●	●	●
Driver Information Center: Monochromatic display	●	●	●	●	●
4.2-inch diagonal color display	–	–	○ <sup>6,7</sup>	○ <sup>6,7</sup>	○ <sup>6</sup>
Floor mats: Carpeted, front and rear	–	●	●	●	●
Rear vision camera	●	●	●	●	●
Remote Keyless Entry	●	●	●	●	●
Remote vehicle starter system	–	–	○ <sup>8,9</sup>	○ <sup>7</sup>	●
Steering column: Tilt and telescopic	●	●	●	●	●
Steering wheel: Mounted audio and phone controls	–	–	●	●	●
Heated, leather-wrapped	–	–	–	○ <sup>8</sup>	●
Sunroof: Power, tilt/sliding	–	–	○ <sup>7,10</sup>	○ <sup>11</sup>	○ <sup>12</sup>
Wireless charging <sup>13</sup> for devices	–	–	–	–	○ <sup>5</sup>

	L	LS	LT	DIESEL	PREMIER
<b>SEATING</b>					
Front buckets with reclining seatbacks and adjustable head restraints	●	●	●	●	●
Rear folding seat with adjustable head restraints for outboard seating positions	●	●	–	–	–
Rear 60/40 split-folding seat with adjustable head restraints for outboard seating positions and center fold-down armrest with two cup holders	–	–	●	●	●
Heated seats: Front	–	–	○ <sup>7</sup>	●	●
Rear outboard	–	–	–	–	○ <sup>5</sup>
Driver-seat adjuster: 6-way manual	●	●	●	–	–
8-way power	–	–	○ <sup>7</sup>	●	●
Front passenger seat adjuster: 2-way manual	●	●	●	●	–
4-way manual	–	–	–	○ <sup>8</sup>	●
Seat trim: Cloth	●	●	●	●	–
Leather appointments	–	–	–	○ <sup>8</sup>	●
<b>ENTERTAINMENT</b>					
Chevrolet MyLink <sup>14</sup> Radio with 7-inch diagonal color touch-screen display, AM/FM stereo, Bluetooth audio streaming <sup>15</sup> for select phones, voice-activated technology, and Android Auto <sup>TM16</sup> and Apple CarPlay <sup>TM17</sup> compatibility	●	●	●	●	●
Chevrolet MyLink <sup>14</sup> Radio with 8-inch diagonal color touch-screen display, includes features listed above; also includes the ability to browse, select and install apps on the MyLink system with Shop <sup>18</sup>	–	–	○ <sup>6</sup>	○ <sup>6</sup>	–
Chevrolet MyLink <sup>14</sup> Radio with Navigation and 8-inch diagonal color touch-screen display, includes features listed above plus enhanced navigation and SiriusXM NavTraffic <sup>19</sup> with 3-month trial subscription	–	–	–	–	○ <sup>6,12</sup>
Bose <sup>®</sup> premium 9-speaker sound system (Hatchback includes 8-speaker system)	–	–	○ <sup>10</sup>	○ <sup>6</sup>	○ <sup>6</sup>
SiriusXM Satellite Radio <sup>19</sup> All Access Package with 3-month trial subscription	–	–	●	●	●

<sup>1</sup> Requires available RS Package. <sup>2</sup> Requires available Driver Confidence II Package. <sup>3</sup> A NOTE ON CHILD SAFETY: Always use safety belts and the correct child restraint for your child's age and size, even with air bags. Even in vehicles equipped with the Passenger Sensing System, children are safer when properly secured in a rear seat in the appropriate infant, child or booster seat. Never place a rear-facing infant restraint in the front seat of any vehicle equipped with an active frontal air bag. See the Owner's Manual and the child safety seat instructions for more safety information. <sup>4</sup> Visit [onstar.com](http://onstar.com) for coverage map, details and system limitations. OnStar acts as a link to existing emergency service providers. <sup>5</sup> Requires available Enhanced Convenience Package. <sup>6</sup> Requires available Technology Package. <sup>7</sup> Requires available automatic transmission. <sup>8</sup> Requires available Convenience Package. <sup>9</sup> Requires available Leather Package. <sup>10</sup> Requires available Sun and Sound Package. <sup>11</sup> Requires available Driver Confidence, Sun and Sound Package. <sup>12</sup> Requires available Sun and Sound with Navigation Package. <sup>13</sup> The system wirelessly charges one PMA- or Qi-compatible mobile device. Some devices require an adaptor or back cover. To check for phone or other device compatibility, visit [my.chevrolet.com/learn](http://my.chevrolet.com/learn) for details. <sup>14</sup> MyLink functionality varies by model. Full functionality requires compatible Bluetooth and smartphone, and USB connectivity for some devices. MyLink on Cruze does not include CD player. Map coverage available in the United States, Puerto Rico and Canada. <sup>15</sup> Visit [my.chevrolet.com/learn](http://my.chevrolet.com/learn) for vehicle and smartphone compatibility. <sup>16</sup> Vehicle user interface is a product of Google and its terms and privacy statements apply. Requires the Android Auto app on Google Play and an Android compatible smartphone running Android 5.0 Lollipop or higher and data plan rates apply. <sup>17</sup> Vehicle user interface is a product of Apple and its terms and privacy statements apply. Requires compatible iPhone and data plan rates apply. <sup>18</sup> Visit [chevrolet.com](http://chevrolet.com) for details about Shop. <sup>19</sup> If you decide to continue service after your trial, the subscription plan you choose will automatically renew thereafter and you will be charged according to your chosen payment method at then-current rates. Fees and taxes apply. To cancel you must call SiriusXM at 1-866-635-2349. See SiriusXM Customer Agreement for complete terms at [siriusxm.com](http://siriusxm.com). All fees and programming subject to change. For more information about Travel Link and NavTraffic, visit [siriusxm.com/infotainment](http://siriusxm.com/infotainment).

## SPECIFICATIONS (CONTINUED)

	L	LS	LT	DIESEL	PREMIER
<b>ENTERTAINMENT (CONTINUED)</b>					
Rear USB port (charge only)	-	-	○ <sup>1</sup>	○ <sup>1</sup>	○ <sup>2</sup>
OnStar Basic Plan <sup>3</sup> for five years, includes select features of the myChevrolet Mobile App <sup>4</sup> including remote start (if equipped), door lock or unlock, honk your horn and flash your lights, and send destinations to your Chevrolet MyLink <sup>5</sup> navigation screen (if equipped). Limited OnStar services include Advanced Diagnostics and Dealer Maintenance Notification	●	●	●	●	●
OnStar 4G LTE and built-in Wi-Fi hotspot <sup>6</sup> for up to 7 devices, includes data trial for 3 months or 3 GB (whichever comes first)	●	●	●	●	●
<b>WHEELS</b>					
15" steel with painted wheel cover	●	●	-	-	-
16" aluminum	-	-	●	●	-
17" aluminum	-	-	-	-	●
18" Black-painted aluminum with Red accents	-	-	○ <sup>7</sup>	-	-
18" machined-face aluminum	-	-	-	○ <sup>8</sup>	○ <sup>8</sup>
<b>PACKAGES</b>					
Sun and Sound Package	-	-	○ <sup>9</sup>	-	-
Chevrolet MyLink <sup>5</sup> Radio with 8-inch diagonal display, Bose premium 9-speaker sound system (Hatchback includes 8-speaker system), color Driver Information Center, power sunroof, driver and front passenger illuminated visor vanity mirrors, and interior ambient lighting	-	-	○ <sup>10</sup>	-	-
Redline Edition	-	-	○ <sup>10</sup>	-	-
18" aluminum wheels with Red accents, Black Cruze emblems with Red outline, and Black bowtie emblems, mirror caps, beltline moldings, front grille surround and foglamp surround	-	-	○	●	-
Convenience Package	-	-	○	●	-
Keyless Open and Start, heated driver and front passenger seats, and 8-way power driver-seat adjuster (remote vehicle starter system included on automatic transmission models)	-	-	○	●	-

● STANDARD ○ AVAILABLE - NOT AVAILABLE

	L	LS	LT	DIESEL	PREMIER
<b>PACKAGES (CONTINUED)</b>					
Technology Package	-	-	○ <sup>1</sup>	○ <sup>11</sup>	○ <sup>12</sup>
Bose premium 9-speaker system (Hatchback includes 8-speaker system), color Driver Information Center and analog mph/kph speedometer (Diesel includes Chevrolet MyLink <sup>5</sup> Radio with 8-inch diagonal display)	-	-	○	○ <sup>13</sup>	○
RS Package	-	-	○	○ <sup>13</sup>	○
Rear spoiler, foglamps, sport body kit and RS badging (Premier includes 18" machined-face aluminum wheels; Hatchback includes single chrome exhaust tip)	-	-	○ <sup>14</sup>	○ <sup>11</sup>	○ <sup>15</sup>
Driver Confidence Package	-	-	○ <sup>14</sup>	○ <sup>11</sup>	○ <sup>15</sup>
Rear Park Assist, Lane Change Alert with Side Blind Zone Alert, and Rear Cross Traffic Alert	-	-	-	○ <sup>16</sup>	-
Driver Confidence, Sun and Sound Package	-	-	-	○ <sup>16</sup>	-
Rear Park Assist, Lane Change Alert with Side Blind Zone Alert, Rear Cross Traffic Alert, Chevrolet MyLink <sup>5</sup> Radio with 8-inch diagonal display, Bose premium 9-speaker sound system (Hatchback includes 8-speaker system), color Driver Information Center, analog mph/kph speedometer, power sunroof, driver and front passenger illuminated visor vanity mirrors, and interior ambient lighting	-	-	-	-	○ <sup>17</sup>
Leather Package	-	-	-	○	-
Leather-appointed seating surfaces, 4-way manual front passenger seat adjuster and heated leather-wrapped steering wheel	-	-	-	-	○ <sup>17</sup>
Driver Confidence II Package	-	-	-	-	○ <sup>17</sup>
Rear Park Assist, Lane Change Alert with Side Blind Zone Alert, Rear Cross Traffic Alert, IntelliBeam high beam assist, Forward Collision Alert, Following Distance Indicator, and Lane Keep Assist with Lane Departure Warning	-	-	-	-	○
Enhanced Convenience Package	-	-	-	-	○
Single-zone automatic climate control, heated rear outboard seats, wireless charging, <sup>18</sup> 110-volt power outlet, inside rearview auto-dimming mirror and driver window with express-up/-down	-	-	-	-	○ <sup>18</sup>
Sun and Sound with Navigation Package	-	-	-	-	○ <sup>19</sup>
Chevrolet MyLink <sup>5</sup> Radio with Navigation and 8-inch diagonal display, Bose premium 9-speaker sound system (Hatchback includes 8-speaker system), color Driver Information Center and power sunroof	-	-	-	-	○ <sup>19</sup>

<sup>1</sup> Requires available automatic transmission. <sup>2</sup> Not available with Enhanced Convenience Package. <sup>3</sup> Does not include emergency or security services. Visit [onstar.com](http://onstar.com) for coverage map, details and system limitations. <sup>4</sup> Requires active OnStar service, compatible device, factory-installed remote start and power locks. Data rates apply. Visit [onstar.com](http://onstar.com) for details and system limitations. <sup>5</sup> MyLink functionality varies by model. Full functionality requires compatible Bluetooth and smartphone, and USB connectivity for some devices. MyLink on Cruze does not include CD player. Map coverage available in the United States, Puerto Rico and Canada. <sup>6</sup> Requires a compatible mobile device, active OnStar service and data plan. 4G LTE service available in select markets. Visit [onstar.com](http://onstar.com) for coverage map, details and system limitations. Data plans provided by AT&T. <sup>7</sup> Requires available Redline Edition. <sup>8</sup> Requires available RS Package. <sup>9</sup> Requires available Convenience Package. Not available with Driver Confidence Package. <sup>10</sup> Requires available RS Package. Not available with Driver Confidence Package. <sup>11</sup> Requires available Driver Confidence, Sun and Sound Package. <sup>12</sup> Requires available Sun and Sound with Navigation Package and Enhanced Convenience Package. <sup>13</sup> Available on Hatchback only. <sup>14</sup> Requires available Convenience Package. Not available with Sun and Sound Package. <sup>15</sup> Requires available Driver Confidence II Package. <sup>16</sup> Requires available Leather Package. <sup>17</sup> Requires available Enhanced Convenience Package. Requires available RS Package when ordered with available Sun and Sound with Navigation Package. <sup>18</sup> The system wirelessly charges one PMA- or Qi-compatible mobile device. Some devices require an adaptor or back cover. To check for phone or other device compatibility, visit [my.chevrolet.com/learn](http://my.chevrolet.com/learn) for details. <sup>19</sup> Requires available Enhanced Convenience Package. Requires available RS Package when ordered with Driver Confidence II Package.



## COMPLETE CARE

Experience Chevrolet Complete Care, a comprehensive coverage, warranty and protection program that comes standard with every new 2018 Chevrolet Cruze lease and purchase. Simply, it is designed around you, to make it easy to keep your Chevrolet like new – and give you the confidence you deserve when you need it most.

## YOUR COMPREHENSIVE OWNER BENEFIT PROGRAM.

Includes two maintenance visits (oil and filter changes, tire rotations and multipoint vehicle inspections)<sup>1</sup>

5 years/60,000 miles of Roadside Assistance and Courtesy Transportation<sup>2</sup>

5-year/60,000-mile Powertrain Limited Warranty<sup>3</sup>

3-year/36,000-mile Bumper-to-Bumper Limited Warranty<sup>4</sup>

6 years/100,000 miles of Rust-Through Protection<sup>5</sup>

5 years of OnStar Basic Plan<sup>3</sup> including select features of the myChevrolet Mobile App<sup>4</sup>

Limited service trial of OnStar Guidance Plan<sup>5</sup>

## DIMENSIONS

### HATCHBACK

Length	175.3"	Width	70.5"	Head Room (front/rear)	38.9"/37.8"
Wheelbase	106.3"	Front Track	60.7"	Leg Room (front/rear)	42.0"/36.1"
Height	57.7"	Rear Track	61.5"	Shoulder Room (front/rear)	54.9"/53.2"
Length	183.7"	Width	70.5"	Head Room (front/rear)	38.9"/37.3"
Wheelbase	106.3"	Front Track	60.7"	Leg Room (front/rear)	42.0"/36.1"
Height	57.4"	Rear Track	61.5"	Shoulder Room (front/rear)	54.9"/53.2"

## MAXIMUM CAPACITIES

### EPA-ESTIMATED FUEL ECONOMY

1.4L 4-cylinder with 6-speed manual transmission (L, LS and LT Sedan)	27 MPG city/40 highway/32 combined
1.4L 4-cylinder with 6-speed automatic transmission (LS and LT Sedan)	29 MPG city/40 highway/33 combined
1.4L 4-cylinder (Premier Sedan)	29 MPG city/39 highway/33 combined
1.6L Turbo-Diesel with 6-speed manual transmission (LT Sedan)	30 MPG city/52 highway/37 combined
1.6L Turbo-Diesel with 9-speed automatic transmission (LT Sedan)	31 MPG city/47 highway/37 combined
1.4L 4-cylinder with 6-speed manual transmission (LT Hatchback)	27 MPG city/38 highway/31 combined
1.4L 4-cylinder with 6-speed automatic transmission (LT Hatchback)	29 MPG city/38 highway/32 combined
1.4L 4-cylinder (Premier Hatchback)	28 MPG city/37 highway/31 combined
1.6L Turbo-Diesel with 6-speed manual transmission (LT Diesel Hatchback)	29 MPG city/48 highway/35 combined
1.6L Turbo-Diesel with 9-speed automatic transmission (LT Diesel Hatchback)	30 MPG city/45 highway/35 combined

**FUEL TANK (APPROXIMATE)** 13.7 gallons (gasoline engine)  
13.5 gallons (diesel engine)

**PASSENGER VOLUME** 93.5 cubic feet (Sedan)  
94 cubic feet (Hatchback)

**CARGO VOLUME<sup>6</sup>** 14.8 cubic feet (L and LS Sedan)  
13.9 cubic feet (LT and Premier Sedan)  
22.7 cubic feet (Hatchback)  
47.2 cubic feet with rear seats folded (Hatchback)

## OWNERSHIP EXTRAS



CHEVROLET.COM/WARRANTY



CHEVROLET.COM/ACCESSORIES



ONSTAR.COM



SIRIUSXM.COM

## NEW VEHICLE LIMITED WARRANTY

**5-YEAR/60,000-MILE TRANSFERABLE POWERTRAIN LIMITED WARRANTY** Every 2018 Chevrolet Cruze comes with a 5-year/60,000-mile (whichever comes first) transferable Powertrain Limited Warranty. 24/7 Roadside Assistance and Courtesy Transportation are also offered for the duration of the Powertrain Limited Warranty. Please see your Chevrolet dealer for details.

**3-YEAR/36,000-MILE BUMPER-TO-BUMPER LIMITED WARRANTY** Chevrolet will warrant each 2018 Cruze from bumper to bumper for 3 years/36,000 miles (whichever comes first; see dealer for details), with no deductible, from the original in-service date of the vehicle, for warrantable repairs that are required as a result of defects due to materials and/or workmanship.

Cosmetic corrosion resulting from defects is also covered under the Bumper-to-Bumper Limited Warranty. In addition, rust-through corrosion will be covered for 6 years/100,000 miles (whichever comes first). See dealer for details.

<sup>1</sup> Maintenance visits must occur within two years or 24,000 miles of vehicle delivery, whichever comes first. Does not include air filters. See participating dealer for other restrictions and complete details. <sup>2</sup> Whichever comes first. See dealer for details. <sup>3</sup> Does not include emergency or security services. Visit [onstar.com](http://onstar.com) for coverage map, details and system limitations. <sup>4</sup> Requires active OnStar service, compatible device, factory-installed remote start and power locks. Data rates apply. Visit [onstar.com](http://onstar.com) for details and system limitations. <sup>5</sup> Visit [onstar.com](http://onstar.com) for coverage map, details and system limitations. <sup>6</sup> Cargo and load capacity limited by weight and distribution.

## IMPORTANT INFORMATION

**CHEVROLET OWNER CENTER (MY.CHEVROLET.COM)** Everything you need to know. Anything you need to do. Your Chevrolet Owner Center makes it easy. Create your account today to get the most out of your new vehicle. Get special alerts and offers, schedule service, review your maintenance schedule, and view how-to videos specifically for your vehicle. All online, anytime. Visit the Owner Center today to register or take a tour.

**ENGINES** Chevrolet products are equipped with engines produced by GM Global Propulsion Systems or other suppliers to GM worldwide. The engines in Chevrolet products may also be used in other GM makes and models.

**ASSEMBLY** Chevrolet vehicles and their components are assembled or produced by different operating units of General Motors, its subsidiaries or suppliers to GM worldwide. We sometimes find it necessary to produce Chevrolet vehicles with different or differently sourced components than originally scheduled. Since some options may be unavailable when your vehicle is assembled, we suggest you verify that your vehicle includes the equipment you ordered and that, if there were changes, they are acceptable to you.

**ONSTAR** OnStar services require vehicle electrical system (including battery), wireless service and GPS satellite signals to be available and operating for features to function properly. OnStar acts as a link to existing emergency service providers. Subscription Service Agreement required. Call 1.888.4ONSTAR (1-888-466-7827) or visit onstar.com for OnStar Terms and Conditions, Privacy Policy, details and system limitations.

**A NOTE ON CHILD SAFETY** Always use safety belts and the correct child restraint for your child's age and size, even with air bags. Even in vehicles equipped with the Passenger Sensing System, children are safer when properly secured in a rear seat in the appropriate infant, child or booster seat. Never place a rear-facing infant restraint in the front seat of any vehicle equipped with an active frontal air bag. See the Owner's Manual and the child safety seat instructions for more safety information.

**IMPORTANT WORDS ABOUT THIS CATALOG** We have tried to make this catalog comprehensive and factual. We reserve the right, however, to make changes at any time, without notice, in prices, colors, materials, equipment, specifications, models and availability. Specifications, dimensions, measurements, ratings and other numbers in this catalog and other

printed materials provided at the dealership or affixed to vehicles are approximations based on design and engineering drawings, prototypes and laboratory tests. Your vehicle may differ due to variations in manufacture and equipment. Since some information may have been updated since the time of printing, please check with your Chevrolet dealer for complete details. Chevrolet reserves the right to lengthen or shorten the model year for any product for any reason or to start and end model years at different times. Certain vehicle features may lose their usefulness over time due to obsolescence from technological changes. Unless otherwise noted, all claims based on GM Compact Car segment and latest available competitive information. Excludes other GM vehicles.

**FLEET ORDERS** Some standard content may be deleted on fleet orders. See dealer for details.

**CHEVROLET OWNERSHIP EXPERIENCE** Chevrolet is committed to enhancing the vehicle shopping and ownership experience through a wide array of programs. Visit chevrolet.com to build and price, find a vehicle, request a quote, compare vehicles, find financial tools or track your vehicle order. You'll also find information about 24-hour Roadside Assistance, Courtesy Transportation, Customer Assistance, GM Mobility, safety and current incentives.

**CHEVROLET.COM/SAFETY** Chevrolet is committed to keeping you and your family safe – from the start of your journey to your destination. That's why every Chevrolet is designed with a comprehensive list of safety and security features to help give you peace of mind.

**GMMOBILITY.COM (1-800-323-9935)** GM Mobility™ offers financial assistance for eligible adaptive equipment to make automotive travel easier for persons with disabilities or special transportation needs. To learn more about special GM Mobility offers, visit gmmobility.com.

**THE BUYPOWER CARD** The Chevrolet BuyPower Card – Every purchase you make with the BuyPower Card from Capital One\* helps you earn toward an eligible new Chevrolet, Buick, GMC or Cadillac vehicle. There's no limit on the amount you can earn or redeem, and your Earnings don't expire. Visit chevroletbuypowercard.com/catalogs.

\* Capital One, N.A. is the issuer of the BuyPower Card. General Motors ("GM") is responsible for the operation and administration of the Earnings program.



TWITTER.COM/CHEVROLET



YOUTUBE.COM/CHEVROLET



FACEBOOK.COM/CHEVROLET

GM, the GM logo, Chevrolet, the Chevrolet logo, and the slogans, emblems, vehicle model names, vehicle body designs and other marks appearing in this catalog are the trademarks and/or service marks of General Motors, its subsidiaries, affiliates or licensors. ©2017 OnStar. All rights reserved. Sirius, XM, SiriusXM and all related marks and logos are trademarks of Sirius XM Radio Inc. The Bluetooth word mark is a registered trademark owned by Bluetooth SIG, Inc., and any use of such mark by Chevrolet is under license. Bose is a registered trademark of the Bose Corp.

©2017 General Motors. All rights reserved. September 2017



**FIND NEW ROADS™**

**CHEVROLET.COM**