

CRUZE 2019

CHEVROLET



Cruze Premier Sedan in Satin Steel Gray Metallic and Cruze Premier Hatchback in Red Hot with available RS Package.



ESCAPE THE ORDINARY AND GO THE DISTANCE.

Refreshed and ready to help you take on the road, the 2019 Cruze Sedan and Hatchback make it easy to explore life's possibilities. With an aerodynamic silhouette and sporting an updated look, Cruze makes a bold first impression. And a selection of new colors helps you express your own style.

Choose from two refined powertrains – a standard 153-horsepower 1.4L turbocharged gas engine or an available 1.6L Turbo-Diesel engine with 240 lb.-ft. of torque. Either way, you're in for impressive fuel efficiency!

The stylish, tech-savvy and fun-to-drive Cruze is here. Are you ready to go as far as your imagination can take you?

¹ EPA-estimated MPG city/highway: Cruze Sedan and Cruze LS and LT Hatchback with 1.4L engine 28/38; Cruze Premier Hatchback with 1.4L engine 28/37; Cruze Sedan with available 1.6L Turbo-Diesel engine 31/48; Cruze Hatchback with available 1.6L Turbo-Diesel engine 30/45.

FIND NEW ROADS™

EXTERIOR DESIGN

**STYLE AND SUBSTANCE
TAKE YOU PLACES.**



CUT THROUGH THE EVERYDAY.

Cruze breaks away from the pack with a dynamic silhouette. The swept roofline and dramatic angles contribute to the vehicle's aero-efficiency and provide an exciting aesthetic.

A STRONG FIRST IMPRESSION.

With its striking styling, the 2019 Cruze is attention-grabbing from the start. Front and center are dual-function projector-beam headlamps with signature LED daytime running lamps, standard on LT, Diesel and Premier.

1. LOOK AHEAD. Dual-function projector-beam headlamps with signature LED daytime running lamps are standard on LT, Diesel and Premier.

2. YOU'LL BE NOTICED. Included with the available RS Package, a Black bowtie emblem and Black exterior accents command attention.

3. EXPLORE THE OPTIONS. Included on LT and Premier with the available RS Package, unique machined-face aluminum wheels make a bold statement, mile after mile. Premier wheel shown.

4. ART OF THE EXIT. An aerodynamic exterior style extends to all the details. Shown here with the available RS Package, new taillamps with LED signature lighting for Premier leave a strong and lasting impression.



Cruze Premier Hatchback in Silver Ice Metallic with available features including the RS Package.



THE DETAILS MATTER. Athletic design moves to the next level with the available RS Package, which includes front sport fascias, a rear spoiler, rockers and foglamps.

CRUZE HATCHBACK



Cruze Hatch has the versatility to help get you through all of life's adventures and the cool good looks that make it seem easy. Whether hauling a pair of subwoofers to a show or carrying a carload of gear to the campsite with a perfect view, you've got all the space you need without losing an inch of style.

THE HATCHBACK HAS IT ALL. Building on signature Chevrolet design DNA, Cruze Hatch has a modern look that's expressed in flowing, sculpted lines. In addition to LT, Diesel and Premier Hatchbacks, there's a new LS Hatch for 2019 that's available with a feature-packed Convenience Package.

THE DIESEL OPTION. Cruze Diesel Hatch delivers savvy style with the efficiency of a 1.6L Turbo-Diesel engine. This means you have the cargo space to carry your gear and the capacity to travel far down the road ahead.



1. EVERYONE NEEDS BREATHING ROOM. Savvy and functional, Cruze Hatch offers versatility and well-integrated storage with 47.2 cubic feet¹ of cargo space with the rear seats folded flat.

2. YOU CAN TAKE IT WITH YOU. A high rear opening and 60/40 split-folding rear seats on LT, Diesel and Premier make loading and unloading large cargo a snap.



¹ Cargo and load capacity limited by weight and distribution.



WANT MORE INFO?
GO TO CHEVY.COM/CRUZE

INTERIOR DESIGN



**MAKE A PERSONAL CONNECTION WHILE
MAINTAINING YOUR COMFORT ZONE.**

Cruze Premier Sedan interior in
Umber with Jet Black accents
and available features.



¹ Not compatible with all devices.

Cruze Premier Sedan
interior in Jet Black with
available features.

The sleek design story continues in an interior created to make every moment of the journey more rewarding. Cruze blends good looks and great functionality with an intuitive layout and plenty of room for friends and life's other necessities.

FIRST-CLASS DETAILS. Cruze was crafted with the thought that what covers the seats is as important as how comfortable they are. Premium surfaces abound and include supple fabrics or available leatherette and Galvano chrome accents.

ENJOY PERSONAL SPACE. With ample front and rear leg room, you can stretch out and enjoy the ride. Generous rear knee clearance allows for ease of entry and exit, which comes in handy on a night out with friends.

COMFORT AT YOUR COMMAND. Chase the chill away with available heated front seats. A heated steering

wheel, standard on Cruze Premier, is ideal for brisk days.

STORAGE SOLUTIONS. The signature dual cockpit interior provides ingenious space for the important things. There's a slot to tuck away your smartphone in the center armrest, two USB ports¹ and additional storage in the center console.

TECHNOLOGY



1 Vehicle user interface is a product of Apple and its terms and privacy statements apply. Requires compatible iPhone and data plan rates apply. 2 Chevrolet Infotainment System functionality varies by model. Full functionality requires compatible Bluetooth and smartphone, and USB connectivity for some devices. 3 Visit my.chevrolet.com/learn for vehicle and smartphone compatibility. 4 Service varies with conditions and location. Requires active OnStar service and paid AT&T data plan. Visit onstar.com for details and limitations. 5 If you decide to continue service after your trial, the subscription plan you choose will automatically renew thereafter and you will be charged according to your chosen payment method at then-current rates. Fees and taxes apply. To cancel you must call SiriusXM at 1-866-635-2349. See SiriusXM Customer Agreement for complete terms at siriusxm.com. All fees and programming subject to change.

Apple CarPlay COMPATIBILITY!

With Apple CarPlay[®], you can simply and smartly connect with some of your most used iPhone[®] features, including Maps, Music, Messages and Phone, right on your touch-screen display.

TECHNOLOGICAL ZEN. The standard 7-inch diagonal full-color Chevrolet Infotainment 3 System² display lets you stay in tune with your Cruze. Connect your compatible smartphone via Bluetooth[®] wireless technology³ and listen to music, get directions or make phone calls.

Wi-Fi IN YOUR CRUZE. Chevrolet offers available 4G LTE Wi-Fi^{®4} that provides a better in-vehicle experience than your smartphone. Our strong signal means you have a fast and reliable connection for up to seven devices.

ENJOY MUSIC AND MORE. SiriusXM^{®5} standard on LT, Diesel and Premier for 3 months, lets you choose from over 150 channels of commercial-free music, live sports, news, talk and entertainment, all at your fingertips, 24/7. You can listen everywhere – in your vehicle, at home on your computer, or on your smartphone.



1. EASY ACCESS TO YOUR SMARTPHONE.

With Android Auto™ compatibility, you can interact with select smartphone apps. This system takes some of your compatible Android™ phone's features and lets you access them on the touch-screen display. You can access your phone, text messages, music, navigation and more.

2. myChevrolet Mobile App² Simply download the app to your compatible smartphone and if your vehicle is properly equipped, you can start or turn off your engine, lock or unlock your doors³ (requires paid subscription after trial), set parking reminders and more. Requires available Remote Access Plan⁴



3. INSIDE INFORMATION. The Driver Information Center allows you to monitor speed and set an audible speed warning. You also get directions with OnStar Turn-by-Turn Navigation⁵ included in the Safety & Security Plan⁶ (comes with 1-month coverage).

¹ Vehicle user interface is a product of Google and its terms and privacy statements apply. Requires the Android Auto app on Google Play and an Android compatible smartphone running Android 5.0 Lollipop or higher. Data plan rates apply. ² Available on select Apple and Android devices. Service availability, features and functionality vary by vehicle, device and the plan you are enrolled in. Device data connection required. Visit onstar.com for coverage map, details and system limitations. ³ Unlock feature requires automatic locks. Remote start requires GM factory-installed and enabled remote start system. Requires paid subscription. Services are subject to User Terms and limitations. ⁴ Remote Access Plan does not include emergency or security services. Visit onstar.com for details and limitations. ⁵ Subject to User Terms and limitations, and varies by vehicle model. Mobile app functionality available on select devices. Map coverage available in the United States, Puerto Rico and Canada. ⁶ Visit onstar.com for coverage map, details and system limitations. OnStar plan, working electrical system, cell service and GPS signal required. OnStar links to emergency services.

Apple CarPlay and iPhone are trademarks of Apple Inc., registered in the U.S. and other countries. Android, Android Auto, Google, Google Play and other marks are trademarks of Google LLC.

1. A GREAT LOOK BACK. It's good to know that a color rear vision camera¹ is standard on every Cruze. It's located on the center touch-screen display.

2. TECH AT YOUR FINGERTIPS.

Use available steering wheel-mounted controls and voice recognition capabilities to take calls, receive text messages or play your favorite tunes hands-free.

3. DON'T FORGET YOUR LAPTOP.

Rear Seat Reminder² activates when the rear doors are opened and closed up to 10 minutes before or anytime while your vehicle is on, so when you turn off the engine, under certain conditions, you will get a reminder to double-check for valuables left behind.



¹ Read the vehicle Owner's Manual for important feature limitations and information. ² Does not detect people or items. Always check rear seat before exiting.

FREEDOM FROM THE START.

Your morning balancing act of keys and coffee just got easier. Keyless Open and Start provides a simple way to get going. Standard on Cruze Diesel and Premier and available on LT with the Convenience Package.

ONE TOUCH TO THE PERFECT

TEMPERATURE. Single-zone automatic climate controls are standard on Cruze LT and Premier, so you can select your ideal temperature and never have to worry about it again.

Cruze Premier Hatchback interior in Jet Black with available features.

PERFORMANCE

Cruze Premier Hatchback in Silver Ice Metallic with available RS Package.

PREMIER HATCH OFFERS

37

MPG HIGHWAY¹ WITH 1.4L TURBOCHARGED ENGINE

153

HORSEPOWER

1.4L

TURBOCHARGED ENGINE

ECOTEC EFFICIENCY. Cruze offers a combination of power and efficiency that can help keep you going longer between fill-ups. The ECOTEC[®] 1.4L turbocharged engine is paired with a 6-speed automatic transmission. On Sedan, this combo offers up to 38 MPG highway¹ and a maximum highway range of up to 520 miles per tank.²

SMOOTH IN THE TURN. Cruze steering, suspension and braking systems are designed to deliver tight handling that makes every model a blast to drive. On LT with the available RS Package and on Premier, a special Z-link rear suspension adds to the precision.

STOPPING POWER. Control is important in a vehicle that performs the way Cruze does. Standard Duralife[™] brake rotors on all models feature corrosion-resistant technology, providing protection against rust and helping prevent steering wheel shudder during braking.

¹ EPA-estimated 37 MPG highway for Cruze Premier Hatchback with 1.4L 4-cylinder engine. EPA-estimated 38 MPG highway for Cruze LS and LT Hatchback and Cruze Sedan with 1.4L 4-cylinder engine. ² Based on EPA-estimated 38 MPG highway for Cruze Sedan with 1.4L 4-cylinder engine and fuel tank capacity. Your range may be less.



Cruze Diesel Sedan in Kinetic Blue Metallic (extra-cost color) with available features.

SEDAN OFFERS UP TO

31/48

MPG CITY/HIGHWAY¹ WITH AVAILABLE 1.6L TURBO-DIESEL ENGINE

240

LB.-FT. OF TORQUE

1.6L

TURBO-DIESEL ENGINE



THIS DIESEL MAKES A DIFFERENCE.

Ready to take things up a notch? Cruze Diesel Sedan, featuring a 1.6L Turbo-Diesel engine, offers up to an incredible 31 MPG city and 48 MPG highway¹, so you'll always be ready to go the extra mile.

EFFICIENCY WITH EASY ACCESS.

Cruze Diesel Hatch also offers exceptional efficiency, with up to 30 MPG city and 45 MPG highway². The ECOTEC 1.6L Turbo-Diesel engine is paired with a 9-speed automatic transmission. And the Hatch allows you to quickly store your stuff or grab your gear.

¹ EPA-estimated 31 MPG city/48 highway for Cruze Diesel Sedan with 1.6L Turbo-Diesel engine. ² EPA-estimated 30 MPG city/45 highway for Cruze Diesel Hatchback with 1.6L Turbo-Diesel engine.

CRUZE PUTS SAFETY FIRST. THE SAME WAY YOU DO.



LOW SPEED FORWARD AUTOMATIC BRAKING.

Available camera-based Low Speed Forward Automatic Braking can help mitigate front-end collisions with detected vehicles at speeds below 50 mph. It does this by applying the brakes if the driver has not already done so to potentially reduce the collision's severity. The system may even help avoid a collision at very low speeds.



FORWARD COLLISION ALERT. This available feature monitors how close your vehicle is to the vehicle in front of you. If the system determines that a front-end collision with a detected vehicle is imminent, it can alert the driver to a potential crash. It also can warn the driver if their Cruze is following a detected vehicle much too closely.



LANE KEEP ASSIST WITH LANE DEPARTURE WARNING.

At speeds above 37 mph, this available camera-based system can detect lane lines and can gently turn the steering wheel to help keep the vehicle in its lane if the vehicle begins leaving the detected lane without the use of a turn signal.



AVAILABLE LANE CHANGE ALERT WITH SIDE BLIND ZONE ALERT. Radar sensors in the rear corners of the vehicle help detect fast-approaching vehicles in the adjacent lanes as well as moving vehicles in the side mirror blind zones. Amber icons in the exterior mirrors indicate a vehicle's presence.



REAR CROSS TRAFFIC ALERT. Using radar sensors, this available feature can alert you to crossing vehicles behind your Cruze when in Reverse. Audible warnings, as well as visual alerts on the rear vision camera screen, are triggered if approaching vehicles are detected.



REAR VISION CAMERA. When traveling in Reverse at low speeds, the standard rear vision camera helps provide a view of the area immediately behind your Cruze on the touch-screen display.



REAR PARK ASSIST. This available feature can help you when in Reverse by providing distance-to-object alerts to detected objects directly behind your vehicle during low-speed maneuvering.



INTELLIBEAM HEADLAMPS. When oncoming headlamps are sensed or when taillamps are detected in front of the vehicle, the available IntelliBeam® high beam assist intuitively adjusts between low and high beams. Available on Premier with Driver Confidence II Package.

1. NERVES OF STEEL. Front and rear “crush zones” are designed to compress in a controlled manner, helping absorb and channel energy away from the cabin.

2. LEARN BETTER DRIVING HABITS. Perfect for new drivers, Teen Driver technology helps encourage better driving habits by providing an in-vehicle report card that monitors the frequency of certain available safety tech features that are activated, muting the audio system when front-seat occupants aren’t wearing their seat belts, and giving audible and visual warnings when the vehicle is traveling over a predetermined speed.

3. ONSTAR AUTOMATIC CRASH RESPONSE! In a crash, built-in sensors can automatically connect you to a specially trained Emergency Medical Dispatch-certified Advisor² who can help you get the assistance you need – even if you can’t ask for it. Advisors can use GPS technology to pinpoint your vehicle’s location and request emergency help. OnStar Automatic Crash Response is included in the available OnStar Safety & Security Plan!



1



2



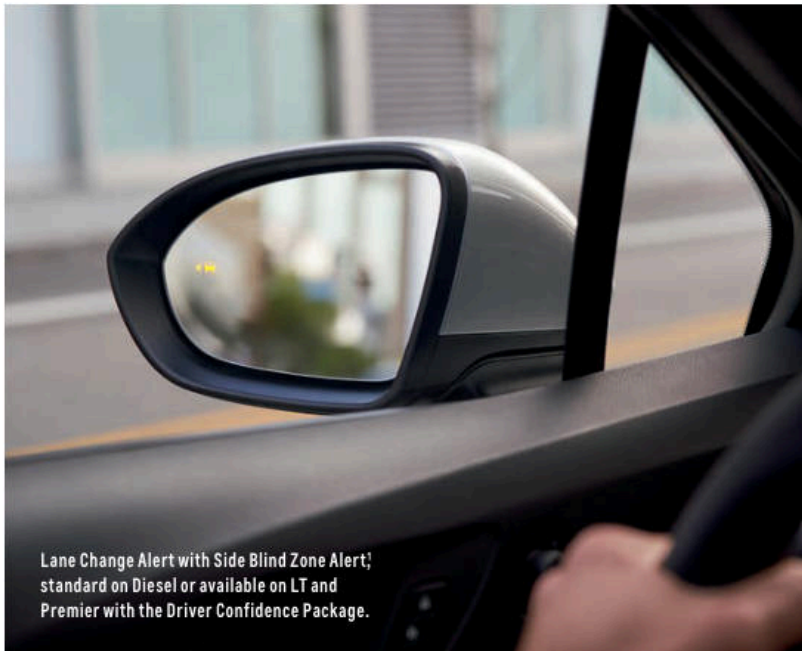
3

¹ OnStar plan, working electrical system, cell service and GPS signal required. OnStar links to emergency services. Visit onstar.com for coverage map, details and system limitations. ² OnStar Advisors are certified by the International Academies of Emergency Dispatch.



Cruze Premier Sedan in
Satin Steel Gray Metallic.

SPECIAL FEATURES



Lane Change Alert with Side Blind Zone Alert,¹ standard on Diesel or available on LT and Premier with the Driver Confidence Package.



Cruise control and steering wheel-mounted controls included in the available LS Convenience Package.



Illuminated Front Door Sill Plates available from Chevrolet Accessories.



All-Weather Floor Liners available from Chevrolet Accessories.

WHEELS



15" Steel with Painted Wheel Cover
(Standard on L and LS)



16" Aluminum (Standard on LT and Diesel;
included with LS Convenience Package)



17" Aluminum
(Standard on Premier)



17" Aluminum
(Included with RS Package on LT)



18" Machined-Face Aluminum
(Included with RS Package on Diesel Hatchback and Premier)

COLORS



SUMMIT WHITE



SILVER ICE METALLIC



GRAPHITE METALLIC^{1,2}



PEPPERDUST METALLIC^{3,4}



OAKWOOD METALLIC⁵



RED HOT⁵

¹ Hatchback only. ² Not available on LS. ³ Not available on L and LS. ⁴ Sedan only. ⁵ Not available on L.

COLORS (CONTINUED)



CAJUN RED TINTCOAT^{1,2}



KINETIC BLUE METALLIC^{1,2}



PACIFIC BLUE METALLIC^{1,3}



SATIN STEEL GRAY METALLIC^{1,3}



NIGHTFALL GRAY METALLIC^{1,5}



MOSAIC BLACK METALLIC^{1,6}



BLACK¹

¹ Not available on L and LS. ² Extra-cost color. ³ Sedan only. ⁴ Hatchback only. ⁵ Not available on LS. ⁶ Not available on L.

FABRICS



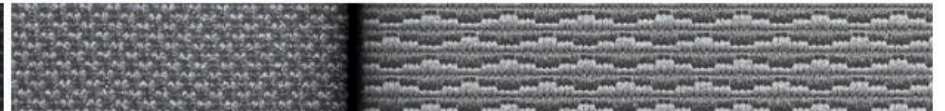
Jet Black Leatherette^{1,2}



Galvanized Leatherette with Jet Black Accents^{1,2}



Jet Black Cloth with Jet Black Accents³



Galvanized Cloth with Jet Black Accents⁴

¹ Standard on Premier. ² Available on Diesel with Preferred Package. ³ Standard on L, LS, LT and Diesel. ⁴ Available on LS, LT and Diesel.

FABRICS (CONTINUED)



1 Umber Leatherette with Jet Black Accents^{1,2}

¹ Standard on Premier. ² Available on Diesel with Preferred Package.

SELECT VEHICLE FEATURES

CRUZE L

1.4L DOHC turbocharged 4-cylinder engine
6-speed automatic transmission
10 airbags ¹
1 month of OnStar Safety & Security Plan ² coverage, which includes Automatic Crash Response, Emergency Services, Stolen Vehicle Assistance, Roadside Assistance and Turn-by-Turn Navigation ³
StabiliTrak [®] Electronic Stability Control System with Traction Control
Chevrolet Connected Access ⁴ with 10 years of standard connectivity, which currently includes Vehicle Diagnostics and Dealer Maintenance Notification
Theft-deterrent system with content-theft alarm and engine immobilizer
Power-programmable door locks with lockout protection and rear-door child safety locks
Teen Driver technology
Rear vision camera ⁵
Chevrolet Infotainment 3 System ⁶ with 7-inch diagonal color touch-screen
4-speaker sound system
Bluetooth [®] wireless technology ⁷ for select phones
2 USB ports ⁸ and auxiliary input jack located in front center stack
Remote Keyless Entry
Power windows with express-down
Interior overhead courtesy lamp and rear overhead courtesy lamp
Rear folding seat
Floor console with armrest

CRUZE LS In addition to or replacing L features, LS includes:

Rear intermittent wiper with washer (Hatchback only)
Compact spare tire (Hatchback only)
Deluxe 3-spoke steering wheel
Carpeted front floor mats

CRUZE LT In addition to or replacing LS features, LT includes:

Projector-style headlamps and LED daytime running lamps
Bright beltline moldings
16" aluminum wheels
Compact spare tire
Remote vehicle starter system
SiriusXM [®] Radio ⁹ All Access Package with 3-month trial subscription
6-speaker sound system
Cruise control with Set and Resume Speed and steering wheel-mounted controls
Steering wheel-mounted controls for audio and phone
Interior overhead courtesy lamp and dual reading lamps
Rear 60/40 split-folding seat, includes center fold-down armrest with two cup holders
Carpeted front and rear floor mats

CRUZE DIESEL In addition to or replacing LT features, Cruze Diesel includes:

1.6L Turbo-Diesel DOHC 4-cylinder engine
9-speed automatic transmission
Keyless Open and Start
8-way power driver-seat adjuster
Heated driver and front passenger seats

CRUZE PREMIER In addition to or replacing LT features, Premier includes:

17" aluminum wheels
Outside heated power-adjustable manual-folding body-color mirrors
Keyless Open and Start
Heated leather-wrapped steering wheel
8-way power driver-seat adjuster
Heated driver and front passenger seats
Illuminated driver and front passenger visor vanity mirrors

SPECIFICATIONS

● STANDARD ○ AVAILABLE – NOT AVAILABLE

	L	LS	LT	DIESEL	PREMIER
EXTERIOR					
Door handles: Body-color	●	●	●	●	●
Fog lamps	–	–	○ ¹⁰	–	○ ¹⁰
Glass: Solar absorbing	●	●	●	●	●
Headlamps with automatic exterior lamp control and delay: Halogen twin reflector	●	●	–	–	–
Halogen dual projector	–	–	●	●	–
IntelliBeam high beam assist	–	–	–	–	○ ¹¹
Mirrors: Power-adjustable, manual-folding, body-color	●	●	●	–	–
Heated	–	–	○ ¹²	●	●
ENGINE/CHASSIS					
Engine: 1.4L DOHC turbocharged 4-cylinder with Continuously Variable Valve Timing, 153 hp and 177 lb.-ft. of torque	●	●	●	–	●
1.6L Turbo-Diesel DOHC 4-cylinder with 137 hp and 240 lb.-ft. of torque	–	–	–	●	–
Steering: Power, electric-assisted, rack-mounted	●	●	●	●	●
Suspension: Front, independent MacPherson struts	●	●	●	●	●
Rear, compound crank	●	●	●	●	–
Rear, compound crank with Z-link	–	–	○ ¹⁰	○ ¹⁰	●
Transmission: 6-speed automatic; electronically controlled with overdrive and stop/start technology	●	●	●	–	●
9-speed automatic; electronically controlled with overdrive and stop/start technology	–	–	–	●	–

¹ A NOTE ON CHILD SAFETY: Always use seat belts and the correct child restraint for your child's age and size, even with airbags. Even in vehicles equipped with the Passenger Sensing System, children are safer when properly secured in a rear seat in the appropriate infant, child or booster seat. Never place a rear-facing infant restraint in the front seat of any vehicle equipped with an active frontal airbag. See your vehicle Owner's Manual and the child safety seat instructions for more safety information.

² Visit onstar.com for coverage map, details and system limitations. OnStar plan, working electrical system, cell service and GPS signal required. OnStar links to emergency services. Roadside service provided by Allstate Roadside Services. Stolen Vehicle Assistance requires armed factory-installed theft-deterrent system. ³ Subject to User Terms and limitations, and varies by vehicle model. Mobile app functionality available on select devices. Map coverage available in the United States, Puerto Rico and Canada. ⁴ Standard connectivity available only to original purchaser for 10 years. Connected Access services are subject to change. Does not include emergency or security services. Diagnostic capabilities vary by model and service plan. Message and data rates may apply. Requires contact method on file and enrollment to receive alerts. Not all issues will deliver alerts. Visit onstar.com for details and limitations. ⁵ Read the vehicle Owner's Manual for important feature limitations and information.

⁶ Chevrolet Infotainment System functionality varies by model. Full functionality requires compatible Bluetooth and smartphone, and USB connectivity for some devices. ⁷ Visit my.chevrolet.com/learn for vehicle and smartphone compatibility.

⁸ Not compatible with all devices. ⁹ If you decide to continue service after your trial, the subscription plan you choose will automatically renew thereafter and you will be charged according to your chosen payment method at then-current rates.

Fees and taxes apply. To cancel you must call SiriusXM at 1-866-635-2349. See SiriusXM Customer Agreement for complete terms at siriusxm.com. All fees and programming subject to change. ¹⁰ Requires available RS Package. ¹¹ Requires available Driver Confidence II Package. ¹² Requires available Convenience Package.

SPECIFICATIONS (CONTINUED)

● STANDARD ○ AVAILABLE – NOT AVAILABLE

	L	LS	LT	DIESEL	PREMIER
SAFETY & SECURITY					
10 airbags: ¹ Frontal and knee for driver and front passenger; seat-mounted side-impact and roof rail-mounted head-curtain for front and rear outboard seating positions; includes Passenger Sensing System	●	●	●	●	●
Brakes: 4-wheel antilock, 4-wheel disc; Duralife brake rotors with corrosion-resistant technology	●	●	●	●	●
1 month of OnStar Safety & Security Plan ² coverage, which includes Automatic Crash Response, Emergency Services, Stolen Vehicle Assistance, Roadside Assistance and Turn-by-Turn Navigation ³	●	●	●	●	●
Teen Driver technology	●	●	●	●	●
Tire Pressure Monitoring System (excludes spare tire)	●	●	●	●	●
INTERIOR					
Climate control: Single-zone, manual	●	●	–	●	–
Climate control: Single-zone, automatic	–	–	●	–	●
Console: Floor-mounted with armrest	●	●	●	●	●
Cruise control: Electronic with Set and Resume Speed; steering wheel-mounted controls	–	○ ⁴	●	●	●
Driver Information Center: Monochromatic display	○ ⁵	●	●	●	●
Floor mats: Carpeted, front	–	●	●	●	●
Floor mats: Carpeted, rear	–	–	●	●	●
Rear vision camera ⁶	●	●	●	●	●
Remote Keyless Entry	●	●	●	●	●
Remote vehicle starter system	–	○ ⁴	●	●	●
Steering column: Tilt and telescopic	●	●	●	●	●
Steering wheel: Mounted audio and phone controls	–	○ ⁴	●	●	●
Steering wheel: Heated, leather-wrapped	–	–	–	○ ⁷	●
Sunroof: Power, tilt/sliding	–	–	○ ⁸	○ ⁸	○ ⁸

	L	LS	LT	DIESEL	PREMIER
SEATING					
Front buckets with reclining seatbacks and adjustable head restraints	●	●	●	●	●
Rear folding seat with adjustable head restraints for outboard seating positions	●	●	–	–	–
Rear 60/40 split-folding seat with adjustable head restraints for outboard seating positions and center fold-down armrest with two cup holders	–	–	●	●	●
Heated front seats	–	–	○ ⁹	●	●
Driver-seat adjuster: 6-way manual 8-way power	●	●	●	–	–
Driver-seat adjuster: 8-way power	–	–	○ ⁹	●	●
Front passenger seat adjuster: 2-way manual 4-way manual	●	●	●	●	–
Front passenger seat adjuster: 4-way manual	–	–	–	○ ⁷	●
Seat trim: Cloth	●	●	●	●	–
Seat trim: Leatherette	–	–	–	○ ⁷	●
ENTERTAINMENT					
Chevrolet Infotainment 3 System ¹⁰ with 7-inch diagonal color touch-screen, AM/FM stereo, Bluetooth audio streaming ¹¹ for two active devices, voice command pass-through to compatible phone, and Apple CarPlay ^{®12} and Android Auto ^{™13} compatibility	●	●	●	●	●
Bose [®] premium 9-speaker sound system	–	–	○ ⁸	○ ⁸	○ ⁸
SiriusXM [®] Radio ¹⁴ All Access Package with 3-month trial subscription	–	–	●	●	●
2 USB ports ¹⁵ and auxiliary input jack	●	●	●	●	●
2 charge-only USB ports ¹⁵ in rear	–	–	●	●	●
Chevrolet Connected Access ¹⁵ with 10 years of standard connectivity, which currently includes Vehicle Diagnostics and Dealer Maintenance Notification	●	●	●	●	●
4G LTE Wi-Fi ^{®19} for up to seven devices, includes 1 month or 3 GB of data (whichever comes first)	○	○	○	○	○

	L	LS	LT	DIESEL	PREMIER
WHEELS					
15" steel with painted wheel cover	●	●	–	–	–
16" aluminum	–	○ ⁴	●	●	–
17" aluminum	–	–	–	–	●
17" aluminum	–	–	○ ¹⁷	–	–
18" machined-face aluminum	–	–	–	○ ^{17,18}	○ ¹⁷
PACKAGES					
LS Convenience Package	–	○	–	–	–
Cruise control, remote vehicle starter system, steering wheel-mounted controls, 16" aluminum wheels and all-season blackwall tires	–	○	–	–	–
Convenience Package	–	–	○	●	–
Keyless Open and Start, heated driver and front passenger seats, 8-way power driver seat adjuster, outside heated power-adjustable manual-folding mirrors and Driver Confidence Package	–	–	○	●	–
Driver Confidence Package	–	–	○ ⁵	●	○ ¹⁹
Rear Park Assist ⁵ ; Lane Change Alert with Side Blind Zone Alert ⁵ ; and Rear Cross Traffic Alert ⁵	–	–	○ ⁵	●	○ ¹⁹
RS Package	–	–	○	○ ¹⁸	○
Rear spoiler, foglamps, sport body kit, RS badging and black beltline moldings (LT includes 17" aluminum wheels; Diesel and Premier include 18" machined-face aluminum wheels)	–	–	○	○ ¹⁸	○
Sun and Sound Package	–	–	○ ^{20,21}	○ ²⁰	○ ¹⁹
Power sunroof and Bose premium 9-speaker sound system	–	–	○ ^{20,21}	○ ²⁰	○ ¹⁹
Preferred Package	–	–	–	○	–
Leatherette seating surfaces, 4-way manual front passenger seat adjuster and 5-spoke leather-wrapped heated steering wheel	–	–	–	○	–
Driver Confidence II Package	–	–	–	–	○
IntelliBeam high beam assist, Forward Collision Alert ⁵ ; Following Distance Indicator ⁵ ; Lane Keep Assist with Lane Departure Warning ⁵ ; Low Speed Forward Automatic Braking ⁵ ; Front Pedestrian Braking ⁶ and Driver Confidence Package	–	–	–	–	○

1 A NOTE ON CHILD SAFETY: Always use seat belts and the correct child restraint for your child's age and size, even with airbags. Even in vehicles equipped with the Passenger Sensing System, children are safer when properly secured in a rear seat in the appropriate infant, child or booster seat. Never place a rear-facing infant restraint in the front seat of any vehicle equipped with an active frontal airbag. See your vehicle Owner's Manual and the child safety seat instructions for more safety information.

2 Visit onstar.com for coverage map, details and system limitations. OnStar plan, working electrical system, cell service and GPS signal required. OnStar links to emergency services. Roadside service provided by Allstate Roadside Services. Stolen Vehicle Assistance requires armed factory-installed theft-deterrent system. **3** Subject to User Terms and limitations, and varies by vehicle model. Mobile app functionality available on select devices. Map coverage available in the United States, Puerto Rico and Canada. **4** Requires available LS Convenience Package. **5** Does not include compass display. **6** Read the vehicle Owner's Manual for important feature limitations and information. **7** Requires available Preferred Package. **8** Requires available Sun and Sound Package. **9** Requires available Convenience Package. **10** Chevrolet Infotainment System functionality varies by model. Full functionality requires compatible Bluetooth and smartphone, and USB connectivity for some devices. **11** Visit my.chevrolet.com/learn for vehicle and smartphone compatibility. **12** Vehicle user interface is a product of Apple and its terms and privacy statements apply. Requires compatible iPhone and data plan rates apply. **13** Vehicle user interface is a product of Google and its terms and privacy statements apply. Requires the Android Auto app on Google Play and an Android compatible smartphone running Android 5.0 Lollipop or higher. Data plan rates apply. **14** If you decide to continue service after your trial, the subscription plan you choose will automatically renew thereafter and you will be charged according to your chosen payment method at then-current rates. Fees and taxes apply. To cancel you must call SiriusXM at 1-866-635-2349. See SiriusXM Customer Agreement for complete terms at siriusxm.com. All fees and programming subject to change. **15** Not compatible with all devices. **15** Standard connectivity available only to original purchaser for 10 years. Connected Access services are subject to change. Does not include emergency or security services. Diagnostic capabilities vary by model and service plan. Message and data rates may apply. Requires contact method on file and enrollment to receive alerts. Not all issues will deliver alerts. Visit onstar.com for details and limitations. **16** Service varies with conditions and location. Requires active OnStar service and paid AT&T data plan. Visit onstar.com for details and limitations. **17** Requires available RS Package. **18** Available on Hatchback only. **19** Requires available Driver Confidence II Package. **20** Includes driver and front passenger illuminated visor vanity mirrors. **21** Requires available Convenience Package and Driver Confidence Package.



COMPLETE CARE

Experience Chevrolet Complete Care, a comprehensive coverage, warranty and protection program that comes standard with every new 2019 Chevrolet Cruze lease and purchase. Simply, it is designed around you, to make it easy to keep your Chevrolet like new – and give you the confidence you deserve when you need it most.

YOUR COMPREHENSIVE OWNER BENEFIT PROGRAM.

Includes one maintenance visit (oil change, tire rotation and multi-point vehicle inspection)!¹

5 years/60,000 miles² of Roadside Assistance³ and Courtesy Transportation.

3-year/36,000-mile² Bumper-to-Bumper Limited Warranty.

5-year/60,000-mile² Powertrain Limited Warranty.

6 years/100,000 miles² of Rust-Through Protection.

Chevrolet Connected Access⁴ with 10 years of standard connectivity, which currently includes Vehicle Diagnostics and Dealer Maintenance Notification.

1 month of Chevrolet Connected Services⁵ and 1 month of OnStar Safety & Security Plan coverage⁵

DIMENSIONS

HATCHBACK

Length	175.3"	Width	70.5"	Head Room (front/rear)	38.9"/37.8"
Wheelbase	106.3"	Front Track	60.7"	Leg Room (front/rear)	42.0"/36.1"
Height	57.7"	Rear Track	61.5"	Shoulder Room (front/rear)	54.9"/53.2"

SEDAN

Length	183.7"	Width	70.5"	Head Room (front/rear)	38.9"/37.3"
Wheelbase	106.3"	Front Track	60.7"	Leg Room (front/rear)	42.0"/36.1"
Height	57.4"	Rear Track	61.5"	Shoulder Room (front/rear)	54.9"/53.2"

MAXIMUM CAPACITIES

EPA-ESTIMATED FUEL ECONOMY

1.4L 4-cylinder (LS and LT Hatchback)	28 MPG city/38 highway/32 combined
1.4L 4-cylinder (Premier Hatchback)	28 MPG city/37 highway/31 combined
1.4L 4-cylinder (Sedan)	28 MPG city/38 highway/32 combined
1.6L Turbo-Diesel (Hatchback)	30 MPG city/45 highway/35 combined
1.6L Turbo-Diesel (Sedan)	31 MPG city/48 highway/37 combined

FUEL TANK (APPROXIMATE)	13.7 gallons (1.4L 4-cylinder) 13.5 gallons (1.6L Turbo-Diesel)
-------------------------	--

PASSENGER VOLUME	93.5 cubic feet (Sedan) 94 cubic feet (Hatchback)
------------------	--

CARGO VOLUME ⁶	14.8 cubic feet (L and LS Sedan) 13.9 cubic feet (LT and Premier Sedan) 22.7 cubic feet (Hatchback) 47.2 cubic feet with rear seats folded (Hatchback)
---------------------------	---

OWNERSHIP EXTRAS

CHEVROLET



CHEVROLET.COM/WARRANTY

CHEVROLET



CHEVROLET.COM/ACCESSORIES



ONSTAR.COM

SIRIUSXM

SIRIUSXM.COM

NEW VEHICLE LIMITED WARRANTY

3-YEAR/36,000-MILE BUMPER-TO-BUMPER LIMITED WARRANTY Chevrolet will warrant each 2019 Cruze from bumper to bumper for 3 years/36,000 miles (whichever comes first; see dealer for details), with no deductible, from the original in-service date of the vehicle, for warrantable repairs that are required as a

result of defects due to materials and/or workmanship. Cosmetic corrosion resulting from defects is also covered under the Bumper-to-Bumper Limited Warranty. In addition, rust-through corrosion will be covered for 6 years/100,000 miles (whichever comes first). See dealer for details.

5-YEAR/60,000-MILE TRANSFERABLE POWERTRAIN LIMITED WARRANTY Every 2019 Cruze comes with a 5-year/60,000-mile (whichever comes first) transferable Powertrain Limited Warranty. 24/7 Roadside Assistance and Courtesy Transportation are also offered for the duration of the Powertrain Limited Warranty. Please see your Chevrolet dealer for details.

¹ Maintenance visit must occur within first year of vehicle delivery. Service visit consists of ACDelco dexos™ Full Synthetic Oil and Filter Change/Tire Rotation/MPVI. Does not include air filters. See participating dealer for other restrictions and complete details. ² Whichever comes first. See dealer for details. ³ Roadside service provided by Allstate Roadside Services. Limitations apply. ⁴ Standard connectivity available only to original purchaser for 10 years. Connected Access services are subject to change. Does not include emergency or security services. Diagnostic capabilities vary by model and service plan. Message and data rates may apply. Requires contact method on file and enrollment to receive alerts. Not all issues will deliver alerts. Visit onstar.com for details and limitations. ⁵ Connected Services include navigation services and Remote Access Plan, and 1 month or 3 GB of 4G LTE data (whichever comes first) from vehicle delivery date. Data plans offered by AT&T. Services are subject to User Terms and limitations. Certain services require working electrical system, cell service and GPS signal. OnStar links to emergency services. Visit onstar.com for coverage map, details and system limitations. ⁶ Cargo and load capacity limited by weight and distribution.

IMPORTANT INFORMATION

CHEVROLET CONNECTED SERVICES AND ONSTAR Effective May 1, 2018, available Chevrolet Connected Services have changed significantly. While many of the offered services are the same, available plans and pricing are different. Connected vehicle services require a paid connected vehicle services plan or trial and connected hardware, vehicle electrical system (including battery), wireless service and GPS satellite signals to be available and operating for features to function properly. OnStar acts as a link to existing emergency service providers. Visit onstar.com for coverage map, details and system limitations.

CHEVROLET OWNER CENTER (MY.CHEVROLET.COM) Everything you need to know. Anything you need to do. Your Chevrolet Owner Center makes it easy. Create your account today to get the most out of your new vehicle. Get special alerts and offers, schedule service, review your maintenance schedule, and view how-to videos specifically for your vehicle. All online, anytime. Visit the Owner Center today to register or take a tour.

ENGINES Chevrolet products are equipped with engines produced by GM Global Propulsion Systems or other suppliers to GM worldwide. The engines in Chevrolet products may also be used in other GM makes and models.

ASSEMBLY Chevrolet vehicles and their components are assembled or produced by different operating units of General Motors, its subsidiaries or suppliers to GM worldwide. We sometimes find it necessary to produce Chevrolet vehicles with different or differently sourced components than originally scheduled. Since some options may be unavailable when your vehicle is assembled, we suggest you verify that your vehicle includes the equipment you ordered and that, if there were changes, they are acceptable to you.

A NOTE ON CHILD SAFETY Always use seat belts and the correct child restraint for your child's age and size, even with airbags. Even in vehicles equipped with the Passenger Sensing System, children are safer when properly secured in a rear seat in the appropriate infant, child or booster seat. Never place a rear-facing infant restraint in the front seat of any vehicle equipped with an active frontal airbag. See your vehicle Owner's Manual and the child safety seat instructions for more safety information.

IMPORTANT WORDS ABOUT THIS CATALOG We have tried to make this catalog comprehensive and factual. We reserve the right, however, to make changes at any time, without notice, in prices, colors, materials, equipment,

specifications, models and availability. Specifications, dimensions, measurements, ratings and other numbers in this catalog and other printed materials provided at the dealership or affixed to vehicles are approximations based on design and engineering drawings, prototypes and laboratory tests. Your vehicle may differ due to variations in manufacture and equipment. Since some information may have been updated since the time of printing, please check with your Chevrolet dealer for complete details. Chevrolet reserves the right to lengthen or shorten the model year for any product for any reason or to start and end model years at different times. Certain vehicle features may lose their usefulness over time due to obsolescence from technological changes. Unless otherwise noted, all claims based on GM Compact Car segment and latest available competitive information. Excludes other GM vehicles.

FLEET ORDERS Some standard content may be deleted on fleet orders. See dealer for details.

CHEVROLET OWNERSHIP EXPERIENCE Chevrolet is committed to enhancing the vehicle shopping and ownership experience through a wide array of programs. Visit chevrolet.com to build and price, find a vehicle, request a quote, compare vehicles, find financial tools or track your vehicle order. You'll also find information about 24-hour Roadside Assistance, Courtesy Transportation, Customer Assistance, GM Mobility, safety and current incentives.

CHEVROLET.COM/SAFETY Chevrolet is committed to keeping you and your family safe – from the start of your journey to your destination. That's why every Chevrolet is designed with a comprehensive list of safety and security features to help give you peace of mind.

GMMOBILITY.COM (1-800-323-9935) GM Mobility™ offers financial assistance for eligible adaptive equipment to make automotive travel easier for persons with disabilities or special transportation needs. To learn more about special GM Mobility offers, visit gmmobility.com.

THE BUYPOWER CARD The Chevrolet BuyPower Card – Every purchase you make with the BuyPower Card from Capital One* helps you earn toward an eligible new Chevrolet, Buick, GMC or Cadillac vehicle. There's no limit on the amount you can earn or redeem, and your Earnings don't expire. Visit chevroletbuypowercard.com/catalogs.

* Capital One, N.A. is the issuer of the BuyPower Card. General Motors ("GM") is responsible for the operation and administration of the Earnings program.



TWITTER.COM/CHEVROLET



YOUTUBE.COM/CHEVROLET



FACEBOOK.COM/CHEVROLET



INSTAGRAM.COM/CHEVROLET

GM, the GM logo, Chevrolet, the Chevrolet logo, and the slogans, emblems, vehicle model names, vehicle body designs and other marks appearing in this catalog are the trademarks and/or service marks of General Motors, its subsidiaries, affiliates or licensors. ©2018 OnStar LLC. All rights reserved. Sirius, XM, SiriusXM and all related marks and logos are trademarks of Sirius XM Radio Inc. The Bluetooth word mark is a registered trademark owned by Bluetooth SIG, Inc., and any use of such mark by Chevrolet is under license. Bose is a registered trademark of the Bose Corp.

©2018 General Motors. All rights reserved. September 2018



FIND NEW ROADS™

[CHEVROLET.COM](https://www.chevrolet.com)