

EQUINOX 2021

CHEVROLET 



Equinox Premier in Midnight Blue
Metallic with available features.

PRACTICALLY INDULGENT.

When it comes to the daily dash, we all have a favorite vehicle in our household. Maybe that's why Equinox has such a presence on American roads today. Besides being stylish, comfortable and roomy, its available technology helps keep you connected to the world of news and entertainment. More important, every 2021 Equinox comes standard with Chevy Safety Assist, a comprehensive package of driver assistance features that offer peace of mind on the road. In short, Equinox is everything you need, to do everything you want.

FIND NEW ROADS™



IN 2020, J.D. POWER NAMED EQUINOX
"MOST DEPENDABLE COMPACT SUV,
4 OUT OF THE LAST 5 YEARS."²

Awards based on 2013–2017 model year vehicles.

¹ Chevy Safety Assist includes Automatic Emergency Braking, Front Pedestrian Braking, Lane Keep Assist with Lane Departure Warning, Forward Collision Alert, IntelliBeam and Following Distance Indicator. Read the vehicle Owner's Manual for important feature limitations and information. ² The Chevrolet Equinox received the fewest reported problems in its segment in the J.D. Power U.S. Vehicle Dependability Studies in 2016 and from 2018–20. Depending on study year, awards based on 2015–17 models. See jdpower.com/awards for 2020 details.

MODELS

LS

From a weekend at the lake to your office parking spot, the well-equipped Equinox LS is ready for your next activity. Chevy Safety Assist¹ gives you six standard safety features including Automatic Emergency Braking, Front Pedestrian Braking, Lane Keep Assist with Lane Departure Warning, Forward Collision Alert, IntelliBeam[®] and Following Distance Indicator.

Apple CarPlay^{®2} and Android Auto^{™3} compatibility, power-adjustable heated mirrors and a Tire Pressure Monitoring System⁴ with Tire Fill Alert are standard.



¹ Read the vehicle Owner's Manual for important feature limitations and information. ² Vehicle user interface is a product of Apple and its terms and privacy statements apply. Requires compatible iPhone and data plan rates apply. ³ Vehicle user interface is a product of Google and its terms and privacy statements apply. Requires the Android Auto app on Google Play and an Android compatible smartphone running Android 5.0 or higher. Data plan rates apply. ⁴ Does not monitor spare tire, if equipped.

Apple CarPlay is a trademark of Apple Inc. Siri, iPhone and Apple Music are trademarks of Apple Inc., registered in the U.S. and other countries. Android and Android Auto are trademarks of Google LLC.

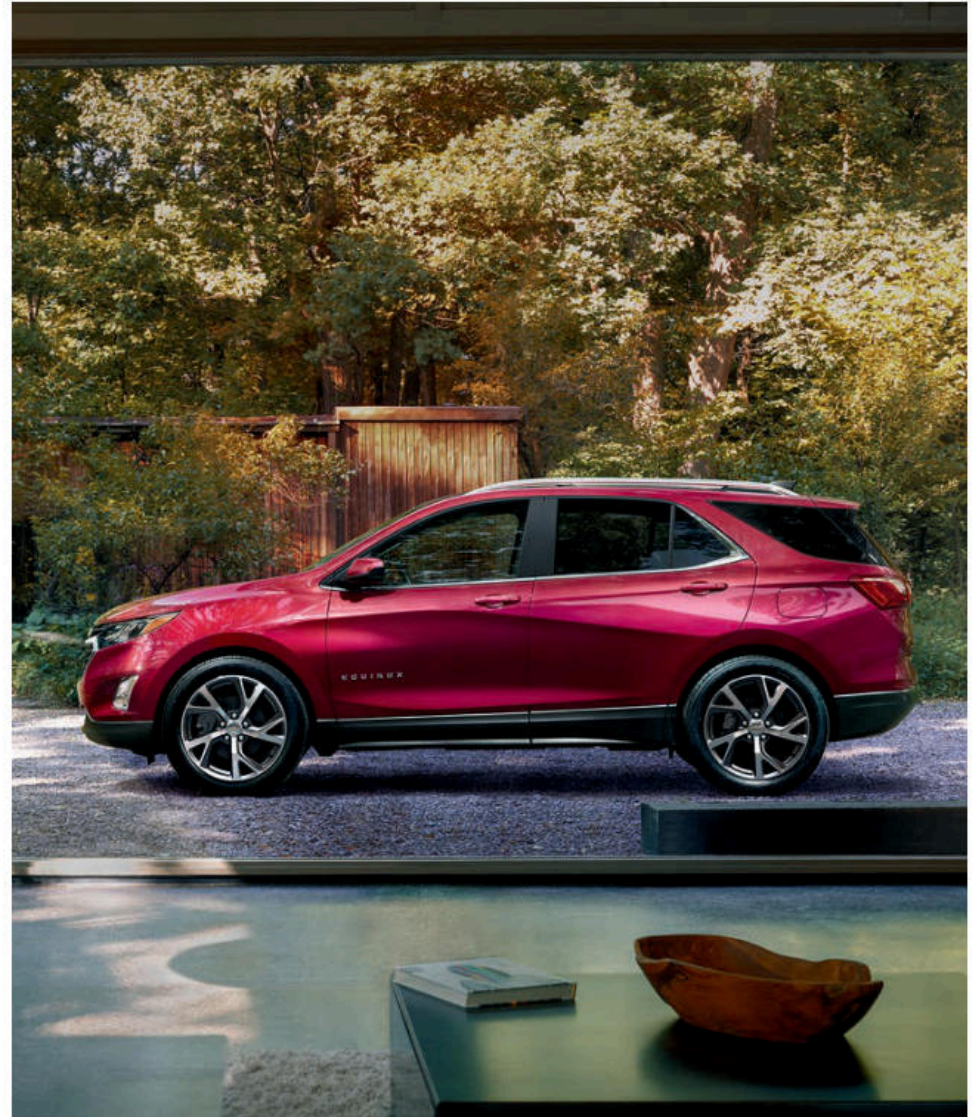
MODELS

LT

LT lets you experience the comforts of home while you're out taking care of business.

Providing a nice list of features, LT includes the convenience of an 8-way power driver seat, overhead storage for sunglasses and a Driver Information Center with multi-color display.

Deep-tinted rear windows and bright lower window trim add to the aesthetic. Jet Black leather-appointed seats are also available.



MODELS

PREMIER

Sometimes we just want premium. More style and luxury without any loss in utility. Equinox Premier offers the complete package.

Exterior highlights include roof rails, 18-inch machined-face aluminum wheels, fog lamps, LED headlamps and taillamps, chrome mirror caps and a hands-free programmable power liftgate.

The high-end look and feel continues inside with perforated leather-appointed seats and dual-zone automatic climate controls. Memory settings on the driver door can be programmed to adjust the seat and mirror positions for two different drivers. A remote vehicle starter system is also standard.



SPECIAL EDITIONS

MIDNIGHT EDITION

Black never goes out of style. The Equinox Midnight Edition, available on LT, starts with a Mosaic Black Metallic exterior. It includes a Black grille and bowtie emblems and Jet Black cloth or available Jet Black perforated leather-appointed seats. Unique 19-inch gloss Black-painted aluminum wheels provide the finishing touch.



SPORT EDITION

The Equinox Sport Edition, available on LT, gives you a choice of exterior colors with an array of Black appointments, including unique 19-inch Black-painted aluminum wheels, Black bowtie emblems and Jet Black cloth or available Jet Black perforated leather-appointed seats.



SPECIAL EDITIONS

REDLINE EDITION

Rev up your Equinox with the Redline Edition. Available on Premier, this edition includes 19-inch Black-painted aluminum wheels with Red accents, Mosaic Black mirror caps, Redline-specific grille and badging, and Black window trim and bowtie emblems.



CHEVY SAFETY ASSIST: SIX STANDARD DRIVER ASSISTANCE FEATURES.

Beginning in the 2020 model year, Equinox became the first Chevrolet vehicle to offer Chevy Safety Assist, a comprehensive standard safety package with six driver assistance features included on all models.



Automatic Emergency Braking. At speeds below 50 mph, this feature works with Forward Collision Alert to help you avoid or reduce the severity of a front-end collision with a detected vehicle you're following by automatically providing hard emergency braking or enhancing the driver's hard braking.



Front Pedestrian Braking. At speeds below 50 mph, this feature can help you avoid or reduce the severity of a front-end collision with a pedestrian it detects directly in front of you. It provides pedestrian alerts and can even automatically provide hard emergency braking or enhance the driver's hard braking. Limited nighttime and low-visibility performance.



Lane Keep Assist with Lane Departure Warning. Uses a brief, gentle steering wheel turn to alert you when you may be unintentionally drifting out of detected lane lines, so you can steer to stay safely in your lane. If needed, you may receive additional Lane Departure Warning alerts. System alerts do not occur if you are using your turn signal or it detects that you may be intentionally leaving your lane.



Forward Collision Alert. Can warn you if it detects a potential front-end collision with a vehicle you're following. It can also provide a tailgating alert if you're following much too closely.



IntelliBeam. Can automatically turn the vehicle's high beam headlamps on and off according to surrounding traffic conditions.



Following Distance Indicator. This feature can display the gap time in seconds between your vehicle and a detected vehicle you're following.

Equinox offers a number of available driver assistance features.



Adaptive Cruise Control. While you steer, this feature can automatically maintain a driver-selected gap time from the detected vehicle you're following. Available on Premier.



Lane Change Alert with Side Blind Zone Alert. This feature can provide side mirror visual alerts when a detected moving vehicle is quickly approaching or is in your side blind zone. Standard on Premier. Available on LT.



Rear Vision Camera. This feature provides an image of the area directly behind your vehicle when traveling in Reverse at low speeds. Standard on all models.



Rear Cross Traffic Alert. This feature can warn you of detected left or right cross traffic behind your Equinox when in Reverse. Standard on Premier. Available on LT.



Rear Park Assist. Can provide distance alerts to nearby detected objects behind your vehicle to help you park and avoid collisions when traveling in Reverse at low speeds. Standard on Premier. Available on LT.

SAFETY AND DRIVER ASSISTANCE



OVERALL VEHICLE SCORE FOR SAFETY!

— National Highway Traffic Safety Administration



FIVE-STAR STRONG.

Equinox has received a 5-Star Overall Vehicle Score for safety from the National Highway Traffic Safety Administration! And with an abundance of standard safety and driver assistance features, Equinox will help you feel confident every time you get behind the wheel.

1 Government 5-Star Safety Ratings are part of the National Highway Traffic Safety Administration's (NHTSA's) New Car Assessment Program (www.nhtsa.gov).

Safety Alert Seat! Available on Premier.

HD Surround Vision! Available on Premier.

High-strength steel and lightweight, robust body structure.



EXTERIOR DESIGN

DISTINCTIVE DETAILS EVERYWHERE.



Equinox Premier in Nightfall Gray
Metallic with available features.

Available power mirrors with integrated turn signal indicators and driver-side auto-dimming feature.

Panoramic power sunroof. Available on LT and Premier.

LED taillamps. Standard on Premier.

Available 19-inch bright machined-face aluminum wheels.





**CRAFTED TO YOUR
GOOD TASTE.**

Equinox Premier interior in
Brandy with Jet Black accents
and available features.



INTERIOR DESIGN

WIDE-OPEN SPACES.

Equinox is one accommodating SUV, with ample **room for five passengers**. Rear seatbacks can be placed in two positions – fully upright or slightly reclined – for precise comfort.

With the touch of a button, Equinox Premier offers the luxury of **heated driver and front passenger seats**.

Ventilated driver and front passenger seats, as well as heated rear outboard seats, are available on Premier.

The accommodations are spacious, with an impressive **39.9 inches of rear-seat leg room**. And many upscale details will make every ride feel exceptional.

From available **Galvano chrome** to soft ambient lighting, Equinox Premier has the style you'll love. **Perforated leather-appointed seating**, which is standard on Premier and available on LT, reflects this exceptional level of craftsmanship.

Rear Seat Reminder¹ activates when the rear doors are opened and closed up to 10 minutes before or anytime while your vehicle is on, so when you turn off the engine under certain conditions, you will get a reminder to double-check for valuables left behind.

Equinox Premier interior in Brandy with Jet Black accents and available features.

¹ Does not detect people or cargo. Always check rear seat before exiting.

COMMUNICATIONS CENTRAL.

¹ Chevrolet Infotainment System functionality varies by model. Full functionality requires compatible Bluetooth and smartphone, and USB connectivity for some devices. ² If you decide to continue service after your trial, the subscription plan you choose will automatically renew thereafter and you will be charged according to your chosen payment method at then-current rates. Fees and taxes apply. See the SiriusXM Customer Agreement at siriusxm.com for complete terms and how to cancel. All fees, content, features and availability are subject to change. ³ Service varies with conditions and location. Requires active OnStar service and paid AT&T data plan. Visit onstar.com for details and limitations. ⁴ Functionality is subject to limitations and varies by vehicle, infotainment system and location. Select service plan required. Certain Alexa Skills require account linking to use. Visit onstar.com for additional details. ⁵ The system wirelessly charges one compatible mobile device. Some phones have built-in wireless charging technology and others require a special adaptor/back cover. To check for phone or other device compatibility, see my.chevrolet.com/learn or consult your carrier.

With the standard **Chevrolet Infotainment 3 system**¹, you can easily handle calls, play music and access phone contacts via the color touchscreen or through voice commands.

SiriusXM² is standard on LT and Premier for three months, and an available 4G LTE Wi-Fi[®] Hotspot³ provides a fast and reliable connection to stay in touch while you're on the go.

With available **Alexa Built-In**⁴, you can use voice commands to stream your favorite music, get directions, make calls, change your radio station and more.

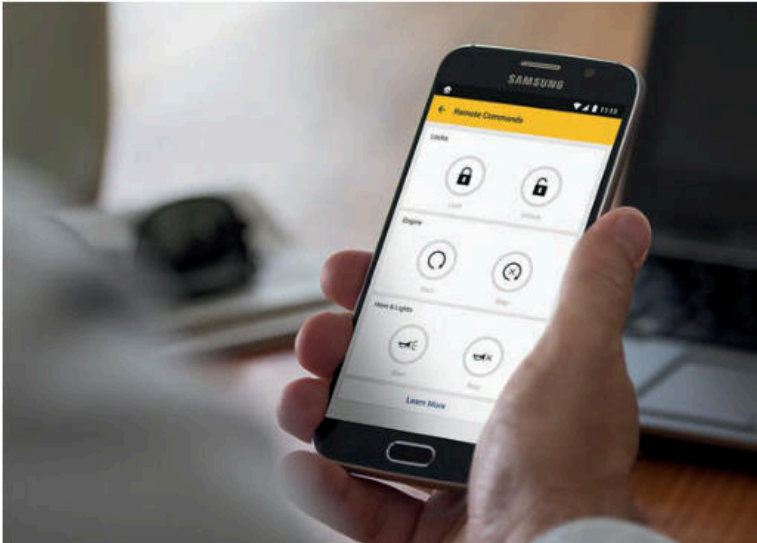
Conveniently charge your compatible cell phone with the available **wireless charging system**⁵

myChevrolet Mobile App¹ includes remote vehicle start if properly equipped (requires paid plan).

Multi-color Driver Information Center.
Standard on LT and Premier.

Available wireless charging²

Teen Driver technology.



¹ Available on select Apple and Android devices. Service availability, features and functionality vary by vehicle, device and the plan you are enrolled in. Device data connection required. ² The system wirelessly charges one compatible mobile device. Some phones have built-in wireless charging technology and others require a special adaptor/back cover. To check for phone or other device compatibility, see my.chevrolet.com/learn or consult your carrier.

PERFORMANCE

READY FOR WHAT THE ROAD HAS IN STORE.

- 1.5L turbocharged DOHC 4-cylinder engine with Variable Valve Timing (VVT), Direct Injection and stop/start technology.
- EPA-estimated 26 MPG city/31 highway (FWD) and 25 MPG city/30 highway (AWD).
- Electronically controlled 6-speed automatic transmission with overdrive and Driver Shift Control.
- Available switchable all-wheel drive enhances traction and control on slippery or snow-covered roads. In front-wheel-drive mode, all-wheel-drive components disengage for greater fuel efficiency.¹

¹ EPA-estimated 26 MPG city/31 highway (FWD) and 25 MPG city/30 highway (AWD).



Equinox Premier in Iridescent Pearl
Tricoat (extra-cost color)
with available features.

CARGO MANAGEMENT

BIG SPACE FOR BIG ADVENTURES.

Equinox is designed with a number of reconfigurable features that make cargo management, and carrying passengers, a breeze.

The **60/40 split-folding rear seats** fold flat to create up to 63.9 cu. ft. of maximum cargo capacity!¹ And conveniently placed **cargo hooks** help keep luggage secure.

There's a place for everything in Equinox. In addition to the **LED-lit center console compartment**, you'll find storage for a cell phone, four cup holders, map pockets and an available

flip-down overhead compartment for sunglasses. There's also water bottle storage in all four doors.

¹ With rear seats folded flat. Cargo and load capacity limited by weight and distribution.

Power height-adjustable liftgate.
Standard on Premier and available on LT.

Hands-free liftgate. Standard on Premier.

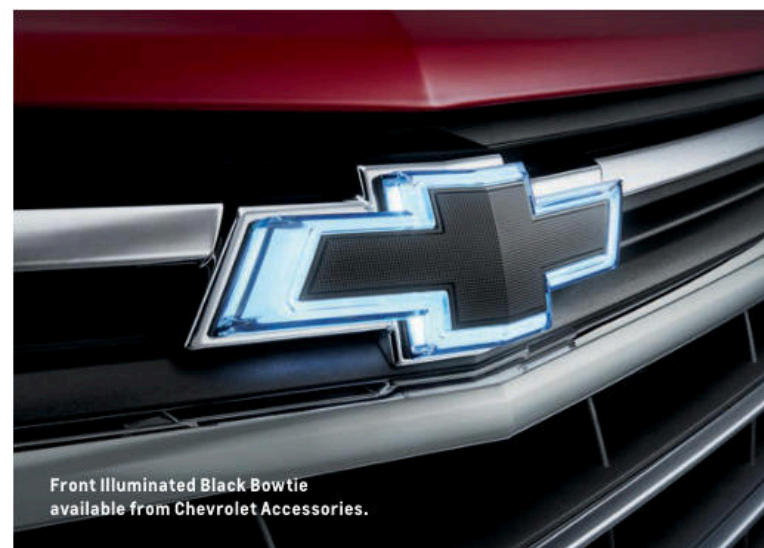
Easy-access rear storage compartment.

Rear-seat vents and USB charge ports¹ standard on all models. Heated rear outboard seats available on Premier.



¹ Not compatible with all devices.

ACCESSORIES



EXTERIOR COLORS



Summit White



Iridescent Pearl Tricoat^{1,2}



Silver Ice Metallic



Nightfall Gray Metallic³



Cajun Red Tintcoat^{1,2}



Pacific Blue Metallic²

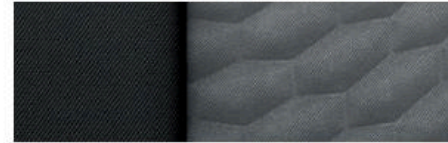


Midnight Blue Metallic³



Mosaic Black Metallic³

MODELS



Medium Ash Gray Premium Cloth



17" Painted-Aluminum Wheels
Standard on L

L Equinox L includes these features:

MECHANICAL

Brakes – 4-wheel antilock, 4-wheel disc with Duralife® rotors; electronic parking brake

Engine – 1.5L turbocharged DOHC 4-cylinder with Variable Valve Timing (VVT), Direct Injection and stop/start technology

StabiliTrak® – Electronic Stability Control System with Traction Control; includes Hill Start Assist

Transmission – 6-speed automatic, electronically controlled with overdrive and Driver Shift Control

EXTERIOR

Active aero shutters

Daytime running lamps – LED

Door handles – body-color

Fuel filler – capless fueling

Glass – solar-absorbing tinted and acoustic-laminated windshield

Headlamps – halogen, automatic on/off with automatic delay

Liftgate – rear, manual

Mirrors – heated, power-adjustable, manual-folding with Black caps

Wipers – front variable-speed, intermittent with washers; rear intermittent with washer

INTERIOR

Active Noise Cancellation

Air conditioning – manual, single-zone; rear console air vents

Audio – 6-speaker system

Chevy Safety Assist¹ – Automatic Emergency Braking, Front Pedestrian Braking, Lane Keep Assist with Lane Departure Warning, Forward Collision Alert, IntelliBeam and Following Distance Indicator

Cruise control – electronic with Set and Resume Speed

Door locks – power programmable with lockout protection and manual rear door child security

Driver Information Center – 3.5-inch diagonal monochromatic display

Entertainment – Chevrolet Infotainment 3 system² with 7-inch diagonal color touch-screen, AM/FM stereo, Bluetooth[®] audio streaming³ for two active devices, voice command pass-through to compatible phone, and Apple CarPlay^{®4} and Android Auto^{™5} compatibility

INTERIOR (CONTINUED)

Floor mats – carpeted front

Keyless Open and Start – includes extended-range Remote Keyless Entry

Lighting – front-seat LED reading lamps, overhead courtesy lamp, LED pin spot lighting on floor console, lamp in floor console bin, rear-seat LED reading lamps and LED rear cargo area lamp

Media – USB ports¹ one Type-A and one Type-C, and auxiliary input jack in front center stack storage area; two USB ports¹ Type-A, charge-only, on rear of center console

Rear Vision Camera¹

Seats – driver and front passenger 6-way manual adjuster

Steering column – manual tilt and telescoping

Steering wheel – 3-spoke, deluxe with mounted audio, cruise and phone controls

Theft-deterrent system – unauthorized entry

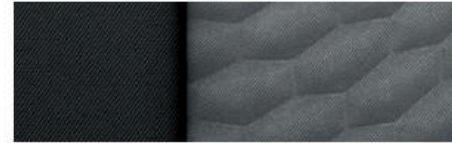
Tire Pressure Monitoring System – with Tire Fill Alert (does not monitor spare tire, if equipped)

Visors – driver and front passenger, covered illuminated vanity mirrors

Windows – power with driver express-up/-down, all others express-down

¹ Read the vehicle Owner's Manual for important feature limitations and information. ² Chevrolet Infotainment System functionality varies by model. Full functionality requires compatible Bluetooth and smartphone, and USB connectivity for some devices. ³ Go to my.chevrolet.com/learnAbout/bluetooth to find out which phones are compatible with the vehicle. Full Bluetooth feature functionality varies by device, model and software version. ⁴ Vehicle user interface is a product of Apple and its terms and privacy statements apply. Requires compatible iPhone and data plan rates apply. ⁵ Vehicle user interface is a product of Google and its terms and privacy statements apply. Requires the Android Auto app on Google Play and an Android compatible smartphone running Android 5.0 or higher. Data plan rates apply. ⁶ Not compatible with all devices.

MODELS (CONTINUED)



Medium Ash Gray Premium Cloth

LS In addition to or replacing L features, LS includes:

EXTERIOR

Tire - compact spare

INTERIOR

Floor mats - carpeted rear

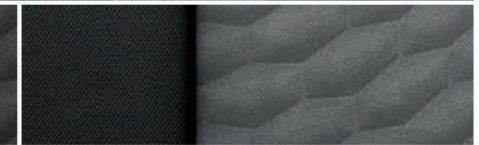


17" Painted-Aluminum Wheels
Standard on LS

MODELS (CONTINUED)



Jet Black Premium Cloth (shown)



Medium Ash Gray Premium Cloth



Jet Black Perforated Leather-Appointed Seating Surfaces²

LT In addition to or replacing LS features, LT includes:

EXTERIOR

Glass – deep-tinted rear windows

Headlamps – high-intensity discharge (HID)

Mirror caps – body-color

Moldings – bright lower window trim

INTERIOR

Console – overhead storage for sunglasses

Driver Information Center – 4.2-inch diagonal multi-color display

Seat – driver 8-way power adjuster with 2-way power lumbar control

Seat release – second-row mechanical levers in cargo area

SiriusXMSM – All Access Package with 3-month trial subscription



17" Painted-Aluminum Wheels
Standard on LT



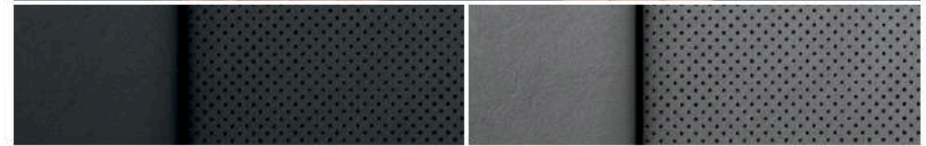
18" Machined-Face Aluminum Wheels with Painted Pockets
Available on LT



19" Gloss Black-Painted Aluminum Wheels
Available on LT with Midnight Edition or Sport Edition

¹ If you decide to continue service after your trial, the subscription plan you choose will automatically renew thereafter and you will be charged according to your chosen payment method at then-current rates. Fees and taxes apply. See the SiriusXM Customer Agreement at siriusxm.com for complete terms and how to cancel. All fees, content, features and availability are subject to change. ² Requires available Leather Package.

MODELS (CONTINUED)



Jet Black Perforated Leather-Appointed Seating Surfaces

Medium Ash Gray Perforated Leather-Appointed Seating Surfaces



Brandy Perforated Leather-Appointed Seating Surfaces (shown)⁸

PREMIER In addition to or replacing LT features, Premier includes:

EXTERIOR

Door handles – body-color with chrome accent

Fog lamps

Headlamps – LED

Liftgate – power, programmable, hands-free

Mirrors – heated, power-adjustable, with integrated turn signal indicators and driver-side auto-dimming feature; manual-folding with chrome caps

Roof rails – bright

Taillamps – LED

INTERIOR

Air conditioning – automatic, dual-zone with individual climate settings for driver and front passenger

Entertainment – Chevrolet Infotainment 3 Plus system¹ with 8-inch diagonal HD color touch-screen, AM/FM stereo, Bluetooth[®] audio streaming² for two active devices, Apple CarPlay^{®3} and Android Auto^{™4} compatibility, available Alexa Built-In⁵ and voice recognition

HD Rear Vision Camera⁶

Lane Change Alert with Side Blind Zone Alert⁷

Media – USB ports,⁷ one Type-A and one Type-C, SD card reader and auxiliary input jack in front center stack

Memory settings – recalls two driver presets for power driver seat, outside rearview mirrors and driver personalization

¹ Chevrolet Infotainment System functionality varies by model. Full functionality requires compatible Bluetooth and smartphone, and USB connectivity for some devices. ² Go to my.chevrolet.com/learnAbout/bluetooth to find out which phones are compatible with the vehicle. Full Bluetooth feature functionality varies by device, model and software version. ³ Vehicle user interface is a product of Apple and its terms and privacy statements apply. Requires compatible iPhone and data plan rates apply. ⁴ Vehicle user interface is a product of Google and its terms and privacy statements apply. Requires the Android Auto app on Google Play and an Android compatible smartphone running Android 5.0 or higher. Data plan rates apply. ⁵ Functionality is subject to limitations and varies by vehicle, infotainment system and location. Select service plan required. Certain Alexa Skills require account linking to use. Visit onstar.com for additional details. ⁶ Read the vehicle Owner's Manual for important feature limitations and information. ⁷ Not compatible with all devices. ⁸ Not available with Cajun Red Tintcoat or Pacific Blue Metallic exterior colors.

MODELS (CONTINUED)

PREMIER (CONTINUED) In addition to or replacing LT features, Premier includes:

INTERIOR (CONTINUED)

Mirror – rearview, auto-dimming

Power outlet – 120-volt on rear of center console

Rear Cross Traffic Alert¹

Rear Park Assist¹

Remote vehicle starter system

Seats – heated driver and front passenger

Sill plates – front, bright

Steering wheel – leather-wrapped

Universal Home Remote – programmable transmitter, includes garage door opener

Wireless charging²



18" Machined-Face Aluminum Wheels with Painted Pockets
Standard on Premier



19" Bright Machined-Face Aluminum Wheels
with Sparkle Silver-Painted Pockets
Available on Premier



19" Black-Painted Aluminum Wheels with Red Accents
Available on Premier with Redline Edition

SPECIFICATIONS

● STANDARD ○ AVAILABLE – NOT AVAILABLE

	L	LS	LT	PREMIER
EXTERIOR				
Antenna: Roof-mounted, Black	●	●	●	–
Body-color	–	–	–	●
Door handles: Body-color	●	●	●	–
Body-color with chrome accent	–	–	–	●
Fog lamps (requires available Confidence and Convenience Package on LT)	–	–	○	●
Glass: Acoustic-laminated windshield	●	●	●	●
Solar-absorbing light-tinted	●	●	●	●
Solar-absorbing deep-tinted behind front doors (requires available LS Convenience Package on LS)	–	○	●	●
Headlamps: Halogen	●	●	–	–
High-intensity discharge (HID)	–	–	●	–
LED	–	–	–	●
LED daytime running lamps	●	●	●	●
Liftgate: Rear, manual	●	●	●	–
Power, programmable (requires available Confidence and Convenience Package)	–	–	○	–
Power, programmable, hands-free	–	–	–	●
Mirrors: Heated, power-adjustable, manual-folding	●	●	●	–
Heated, power-adjustable, manual-folding with integrated turn signal indicators and driver-side auto-dimming feature (requires available Leather Package on LT)	–	–	○	●
Black caps	●	●	–	–
Body-color caps	–	–	●	–
Chrome caps	–	–	–	●
Roof rails: Bright (requires available panoramic power sunroof on LT)	–	–	○	●
Taillamps: LED	–	–	–	●
ENGINE/CHASSIS				
Engine: 1.5L turbocharged DOHC 4-cylinder with Variable Valve Timing (VVT), Direct Injection and stop/start technology; 170 hp @ 5600 rpm, 203 lb.-ft. of torque @ 2000-4000 rpm	●	●	●	●
All-wheel drive: On/off switchable	–	○	○	○
Steering: Power, rack-and-pinion	●	●	●	●
Suspension: Front, MacPherson strut; rear, 4-link	●	●	●	●
Transmission: 6-speed automatic, electronically controlled with overdrive and Driver Shift Control	●	●	●	●
SAFETY & SECURITY				
Airbags: ¹ Frontal airbags for driver and front passenger; seat-mounted side-impact airbags for driver and front passenger; head-curtain airbags for front and rear outboard seating positions; includes front Passenger Sensing System for frontal passenger airbag	●	●	●	●
Chevy Safety Assist: ² Automatic Emergency Braking, Front Pedestrian Braking, Lane Keep Assist with Lane Departure Warning, Forward Collision Alert, IntelliBeam automatic high beam on/off and Following Distance Indicator	●	●	●	●
Lane Change Alert with Side Blind Zone Alert ² (requires available Confidence and Convenience Package on LT)	–	–	○	●
LATCH system (Lower Anchors and Tethers for CHildren), for child restraint systems	●	●	●	●
Rear Cross Traffic Alert ² (requires available Confidence and Convenience Package on LT)	–	–	○	●

	L	LS	LT	PREMIER
SAFETY & SECURITY (CONTINUED)				
Rear Park Assist ² (requires available Confidence and Convenience Package on LT)	–	–	○	●
Rear Vision Camera ²	●	●	●	–
HD Rear Vision Camera ² (requires available Infotainment Package on LT)	–	–	○	●
HD Surround Vision: ² Includes HD Rear Vision Camera (requires available Confidence and Convenience II Package)	–	–	–	○
Safety Alert Seat ² (requires available Confidence and Convenience II Package)	–	–	–	○
Teen Driver technology	●	●	●	●
Theft-deterrent system: Unauthorized entry	●	●	●	●
Up to 3 months of OnStar [®] Safety & Security coverage ³	●	●	●	●
INTERIOR				
Adaptive Cruise Control ² (requires available Confidence and Convenience II Package)	–	–	–	○
Air conditioning: Manual, single-zone	●	●	●	–
Automatic, dual-zone with individual climate settings for driver and front passenger (requires available Confidence and Convenience Package on LT)	–	–	○	●
Power outlets: 12-volt auxiliary, in front storage bin and rear cargo area	●	●	●	●
120-volt, on rear of center console (requires available Infotainment Package on LT)	–	–	○	●
Rear Seat Reminder ⁴	●	●	●	●
Remote vehicle starter system (requires available Confidence and Convenience Package on LT)	–	–	○	●
Steering wheel: 3-spoke, with mounted audio, cruise and phone controls	●	●	●	●
Leather-wrapped (requires available Confidence and Convenience Package on LT)	–	–	○	●
Heated (requires available Confidence and Convenience II Package)	–	–	–	○
Sunroof: Panoramic power with power sunshade, includes bright roof-mounted side rails on LT (requires available Confidence and Convenience Package on LT; requires available Confidence and Convenience II Package on Premier)	–	–	○	○
Universal Home Remote: Programmable, includes garage door opener (requires available Confidence and Convenience Package on LT)	–	–	○	●
SEATING				
Seats: Front bucket	●	●	●	●
Rear manual-folding 60/40 split-bench with center armrest	●	●	●	●
Seat: Driver 6-way manual adjuster	●	●	–	–
Driver 8-way power adjuster with 2-way power lumbar control (requires available LS Convenience Package on LS)	–	○	●	●
Front passenger 6-way manual adjuster	●	●	●	●
Front passenger 8-way power adjuster with 2-way power lumbar control (requires available Confidence and Convenience II Package)	–	–	–	○
Heated driver and front passenger seats (requires available Confidence and Convenience Package on LT)	–	–	○	●
Ventilated driver and front passenger seats (requires available Confidence and Convenience II Package)	–	–	–	○
Heated rear outboard seating positions (requires available Confidence and Convenience II Package)	–	–	–	○
Memory settings – recalls two driver presets for power driver seat and outside rearview mirrors (requires available Leather Package on LT)	–	–	○	●

¹ A NOTE ON CHILD SAFETY: Always use seat belts and the correct child restraint for your child's age and size, even with airbags. Even in vehicles equipped with the Passenger Sensing System, children are safer when properly secured in a rear seat in the appropriate infant, child or booster seat. Never place a rear-facing infant restraint in the front seat of any vehicle equipped with an active frontal airbag. See your vehicle Owner's Manual and the child safety seat instructions for more safety information.

² Read the vehicle Owner's Manual for important feature limitations and information. ³ When you select a monthly plan within 30 days of activating your 1-month trial, you'll receive the first 2 months of the plan you select at no additional charge when you associate an approved payment method on file to your account and authorize recurring payments for your service plan. The amount and frequency of each recurring payment is based upon the service(s) and payment interval(s) you select from the options provided. After the trial expires, OnStar will automatically bill your payment method monthly at then-current standard monthly rates. Plans containing 4G LTE data will be billed every 30 days by AT&T. You may cancel at any time by pushing your blue OnStar button or calling 1-888-466-7827. May not be combined with other offers or retroactively applied. Offer subject to change. ⁴ Does not detect people or items. Always check rear seat before exiting.

SPECIFICATIONS (CONTINUED)

● STANDARD ○ AVAILABLE – NOT AVAILABLE

	L	LS	LT	PREMIER
ENTERTAINMENT				
Chevrolet Infotainment 3 system ¹ with 7-inch diagonal color touch-screen, AM/FM stereo, Bluetooth [®] audio streaming ² for two active devices, voice command pass-through to compatible phone, and Apple CarPlay ^{®3} and Android Auto ^{™4} compatibility	●	●	●	–
Chevrolet Infotainment 3 Plus system ¹ with 8-inch diagonal HD color touch-screen, includes features listed above, available Alexa Built-In ⁵ and voice recognition	–	–	–	●
Chevrolet Infotainment 3 Plus system ¹ with Navigation ⁶ ; includes Plus system features listed above, enhanced voice recognition and Connected Navigation ⁷ (requires available Infotainment Package)	–	–	○	–
Chevrolet Infotainment 3 Premium system ¹ with Navigation ⁶ ; includes Plus system features listed above, HD Radio [®] enhanced voice recognition and Connected Navigation ⁷ (requires available Infotainment II Package)	–	–	–	○
Audio: 6-speaker system	●	●	●	●
Bose premium 7-speaker audio system (requires available Infotainment II Package)	–	–	–	○
Media: USB ports ⁸ ; one Type-A and one Type-C, and auxiliary input jack in front center stack storage area	●	●	●	–
USB ports ⁸ ; one Type-A and one Type-C, SD card reader and auxiliary input jack in front center stack storage area (requires available Infotainment Package on LT)	–	–	○	●
USB ports ⁸ ; two Type-A, in floor console storage bin (requires available Infotainment Package on LT)	–	–	○	●
USB ports ⁸ ; two Type-A, charge-only, on rear of center console	●	●	●	●
SiriusXM ^{®9} – All Access Package with 3-month trial subscription	–	–	●	●
Available 4G LTE Wi-Fi [®] Hotspot ¹⁰ for up to seven devices, includes 1 month or 3 GB of data (whichever comes first)	○	○	○	○
Chevrolet Connected Access ¹¹ with up to 10 years of standard connectivity, which currently enables features such as Vehicle Diagnostics and Dealer Maintenance Notification	●	●	●	●
PACKAGES AND SPECIAL EDITIONS				
LS Convenience Package	–	○	–	–
8-way power driver seat adjuster with 2-way power lumbar control and deep-tinted rear glass behind front doors	–	○	–	–
Confidence and Convenience Package	–	–	○	–
Driver Confidence II Package (Rear Park Assist ¹² ; Rear Cross Traffic Alert ¹² and Lane Change Alert with Side Blind Zone Alert ¹²) and Driver Convenience Package (fog lamps, remote vehicle starter system, dual-zone automatic climate control, heated driver and front passenger seats, leather-wrapped steering wheel, programmable Universal Home Remote and power liftgate)	–	–	○	–

	L	LS	LT	PREMIER
PACKAGES AND SPECIAL EDITIONS (CONTINUED)				
Infotainment Package	–	–	○	–
Chevrolet Infotainment 3 Plus system ¹ with Navigation ⁶ ; HD Rear Vision Camera ¹² ; 120-volt power outlet, SD card reader in front center stack storage area and two Type-A USB ports ⁸ in floor console storage bin (requires available Confidence and Convenience Package)	–	–	○	–
Leather Package	–	–	○	–
Jet Black perforated leather-appointed seating surfaces, memory settings, inside auto-dimming rearview mirror and outside heated power-adjustable mirrors with integrated turn signal indicators and driver-side auto-dimming feature (requires available Confidence and Convenience Package)	–	–	○	–
Midnight Edition	–	–	○	–
19" gloss Black-painted aluminum wheels, Black bowtie emblems, Black grille and surround, Black fog lamp bezel surrounds, and Jet Black Premium Cloth seating (requires Mosaic Black Metallic exterior color and available Confidence and Convenience Package)	–	–	○	–
Sport Edition	–	–	○	–
Midnight Edition features listed above (requires available Confidence and Convenience Package; available with Summit White, Iridescent Pearl Tricoat, Silver Ice Metallic, Nightfall Gray Metallic, Cajun Red Tintcoat, Pacific Blue Metallic or Midnight Blue Metallic exterior colors)	–	–	○	–
Redline Edition	–	–	–	○
19" Black-painted aluminum wheels with Red accents, Black bowtie emblems, Redline-specific Black grille, Black Equinox badges with Red outline, Black window surround and Mosaic Black mirror caps (requires Jet Black perforated leather-appointed seating surfaces; available with Summit White, Silver Ice Metallic or Mosaic Black Metallic exterior colors) (not available with Confidence and Convenience II Package, Infotainment II Package or panoramic power sunroof)	–	–	–	○
Confidence and Convenience II Package	–	–	–	○
Driver Confidence III Package (Safety Alert Seat ¹² ; HD Surround Vision ¹² and Adaptive Cruise Control ¹²) and Driver Convenience II Package (heated steering wheel, 8-way power front passenger seat adjuster with 2-way power lumbar control, ventilated driver and front passenger seats, and heated rear outboard seats)	–	–	–	○
Infotainment II Package	–	–	–	○
Chevrolet Infotainment 3 Premium system ¹ with Navigation ⁶ ; HD Radio and Bose premium 7-speaker audio system (requires available Confidence and Convenience II Package)	–	–	–	○

¹ Chevrolet Infotainment System functionality varies by model. Full functionality requires compatible Bluetooth and smartphone, and USB connectivity for some devices. Map coverage available in the United States, Puerto Rico and Canada. ² Go to my.chevrolet.com/learnAbout/bluetooth to find out which phones are compatible with the vehicle. Full Bluetooth feature functionality varies by device, model and software version. ³ Vehicle user interface is a product of Apple and its terms and privacy statements apply. Requires compatible iPhone and data plan rates apply. ⁴ Vehicle user interface is a product of Google and its terms and privacy statements apply. Requires the Android Auto app on Google Play and an Android compatible smartphone running Android 5.0 or higher. Data plan rates apply. ⁵ Functionality is subject to limitations and varies by vehicle, infotainment system and location. Select service plan required. Certain Alexa Skills require account linking to use. Visit onstar.com for additional details. ⁶ Map coverage available in the United States, Puerto Rico and Canada. ⁷ Connected Navigation and Real-time Points of Interest (POI) only available on properly equipped vehicles. Requires paid plan or trial. Map coverage available in the United States, Puerto Rico and Canada. Visit onstar.com for details and limitations. ⁸ Not compatible with all devices. ⁹ If you decide to continue service after your trial, the subscription plan you choose will automatically renew thereafter and you will be charged according to your chosen payment method at then-current rates. Fees and taxes apply. See the SiriusXM Customer Agreement at siriusxm.com for complete terms and how to cancel. All fees, content, features and availability are subject to change. ¹⁰ Service varies with conditions and location. Requires active service and paid AT&T data plan. Visit onstar.com for details and limitations. Availability subject to change. ¹¹ Standard connectivity available only to original purchaser for up to 10 years. Connected Access services are subject to change. Does not include emergency or security services. Diagnostic capabilities vary by model and service plan. Message and data rates may apply. Requires contact method on file and enrollment to receive alerts. Not all issues will deliver alerts. Visit onstar.com for details and limitations. ¹² Read the vehicle Owner's Manual for important feature limitations and information.

DIMENSIONS

Length	183.1"
Wheelbase	107.3"
Height	65.4"

Width	72.6"
Front Track	62.2"
Rear Track	62.2"

Head Room (front/rear)	40.0"/38.5"
Head Room with Sunroof (front/rear)	38.2"/36.9"
Leg Room (front/rear)	40.9"/39.9"
Shoulder Room (front/rear)	57.2"/55.5"

MAXIMUM CAPACITIES

Fuel tank (approximate)	14.9 gallons (FWD); 15.6 gallons (AWD)
Passenger volume	103.2 cubic feet
Seating	Seats 5
Cargo volume ¹	63.9 cubic feet (with second-row seats folded flat)

EPA-ESTIMATED FUEL ECONOMY

1.5L turbocharged FWD	26 MPG city/31 highway/28 combined
1.5L turbocharged AWD	25 MPG city/30 highway/27 combined



Enroll. It's quick, it's easy and there is no cost to join. You will automatically receive points just for enrolling². To enroll, visit mychevroletrewards.com.

Earn. Earn points on eligible new vehicle leases or purchases, which can be redeemed toward accessories³, vehicle service and more. Plus, get points for paid service⁴, select OnStar[®] and Connected Services plans⁵ and many others.

Enjoy. Use points toward eligible accessories³, paid service, eligible new vehicles⁶ and more. It's our way of saying thanks!



First oil change is covered! Experience Chevrolet Complete Care, a comprehensive coverage, limited warranty and protection program that comes standard with every new 2021 Chevrolet Equinox lease and purchase.

Simply, it is designed around you, to make it easy to help keep your Chevrolet like new – and give you the confidence you deserve.

For more information, visit chevrolet.com/complete-care.

NEW VEHICLE LIMITED WARRANTY

Chevrolet will warrant each 2021 Equinox with:

3-year/36,000-mile⁸ Bumper-to-Bumper Limited Warranty.

6 years/100,000 miles⁸ of Rust-Through Protection.

5-year/60,000-mile⁸ Powertrain Limited Warranty.

5 years/60,000 miles⁸ of Roadside Assistance⁹ and Courtesy Transportation.

¹ Cargo and load capacity limited by weight and distribution. ² Must be 18 years or older. Points may be earned and redeemed only at participating GM entities, dealers or third party retailers in the United States (excluding Puerto Rico, the U.S. Virgin Islands or Guam). Points are not earned on taxes or certain fees, and expire 5 years from when points are earned. Some restrictions apply. For more information, please view full program Terms & Conditions. ³ Members may use the voucher on eligible Chevrolet, Buick, GMC and Cadillac Accessories purchased through a participating dealership. Voucher must be used by expiration date noted. Any unused amount of the voucher will be forfeited. ⁴ Excludes taxes, fees and body shop repair orders. It could take up to 15 days for points to post to your account. ⁵ Connected vehicle services vary by vehicle model and require working electrical system, cell reception and GPS signal. Requires active service plan. OnStar links to emergency services. Visit onstar.com for details and limitations. ⁶ Not compatible with some other offers, including the GM Employee Discount programs. Excludes 2020 Chevrolet Corvette. Dealer contribution may affect final consumer cost. ⁷ Maintenance visit must occur within first year of vehicle delivery. Service visit consists of ACDelco dexos1™ Full Synthetic Oil and Filter Change/Tire Rotation/MPVI. Does not include air filters. See participating dealer for other restrictions and complete details. ⁸ Whichever comes first. See dealer for details. ⁹ Roadside service provided by Allstate Roadside Services. Limitations apply.

IMPORTANT INFORMATION

Chevrolet Owner Center (my.chevrolet.com). Everything you need to know. Anything you need to do. Your Chevrolet Owner Center makes it easy. Create your account today to get the most out of your new vehicle. Get special alerts and offers, schedule service, review your maintenance schedule, and view how-to videos specifically for your vehicle. All online, anytime. Visit the Owner Center today to register or take a tour.

Engines. Chevrolet products are equipped with engines produced by GM Global Propulsion Systems or other suppliers to GM worldwide. The engines in Chevrolet products may also be used in other GM makes and models.

Assembly. Chevrolet vehicles and their components are assembled or produced by different operating units of General Motors, its subsidiaries or suppliers to GM worldwide. We sometimes find it necessary to produce Chevrolet vehicles with different or differently sourced components than originally scheduled. Since some options may be unavailable when your vehicle is assembled, we suggest you verify that your vehicle includes the equipment you ordered and that, if there were changes, they are acceptable to you.

Chevrolet Connected Services and OnStar. Connected vehicle services vary by vehicle model and require an active service plan, working electrical system, cell reception and GPS signal. OnStar links to emergency services. Visit onstar.com for details and limitations.

A note on child safety. Always use seat belts and the correct child restraint for your child's age and size, even with airbags. Even in vehicles equipped with the Passenger Sensing System, children are safer when properly secured in a rear seat in the appropriate infant, child or booster seat. Never place a rear-facing infant restraint in the front seat of any vehicle equipped with an active frontal airbag. See your vehicle Owner's Manual and the child safety seat instructions for more safety information.

Important words about this catalog. We have tried to make this catalog comprehensive and factual. We reserve the right, however, to make changes at any time, without notice, in prices, colors, materials, equipment, specifications, models and availability. Specifications, dimensions, measurements, ratings and other numbers in this catalog

and other printed materials provided at the dealership or affixed to vehicles are approximations based on design and engineering drawings, prototypes and laboratory tests. Your vehicle may differ due to variations in manufacture and equipment. Since some information may have been updated since the time of printing, please check with your Chevrolet dealer for complete details. Chevrolet reserves the right to lengthen or shorten the model year for any product for any reason or to start and end model years at different times. Certain vehicle features may lose their usefulness over time due to obsolescence from technological changes. Unless otherwise noted, all claims based on GM Compact Crossover segment and latest available competitive information. Excludes other GM vehicles.

Fleet orders. Some standard content may be deleted on fleet orders. See dealer for details.

Chevrolet ownership experience. Chevrolet is committed to enhancing the vehicle shopping and ownership experience through a wide array of programs. Visit chevrolet.com to build and price, find a vehicle, request a quote, compare vehicles, find financial tools or track your vehicle order. You'll also find information about 24-hour Roadside Assistance, Courtesy Transportation, Customer Assistance, GM Mobility, safety and current incentives.

Chevrolet.com/safety. Chevrolet is committed to helping keep you and your family safe – from the start of your journey to your destination. That's why Chevrolet vehicles offer standard and available safety and security features to help give you peace of mind.

GMmobility.com (1-800-323-9935). GM Mobility™ offers financial assistance for eligible adaptive equipment to make automotive travel easier for persons with disabilities or special transportation needs. To learn more about special GM Mobility offers, visit gmmobility.com.

The BuyPower Card. The Chevrolet BuyPower Card – Every purchase you make with the BuyPower Card from Capital One* helps you earn toward an eligible new Chevrolet, Buick, GMC or Cadillac vehicle. There's no limit on the amount you can earn or redeem, and your Earnings don't expire. Visit chevroletbuypowercard.com/catalogs.

* Capital One, N.A. is the issuer of the BuyPower Card. General Motors ("GM") is responsible for the operation and administration of the Earnings program.



GM, the GM logo, Chevrolet, the Chevrolet logo, and the slogans, emblems, vehicle model names, vehicle body designs and other marks appearing in this catalog are the trademarks and/or service marks of General Motors, its subsidiaries, affiliates or licensors. ©2020 OnStar LLC. All rights reserved. Sirius, XM, SiriusXM and all related marks and logos are trademarks of Sirius XM Radio Inc. Amazon, Alexa and all related marks are trademarks of Amazon.com, Inc. or its affiliates. The Bluetooth word mark is a registered trademark owned by Bluetooth SIG, Inc., and any use of such mark by Chevrolet is under license. Bose is a registered trademark of the Bose Corp.

©2020 General Motors. All rights reserved. October 2020

FIND NEW ROADS™

CHEVROLET.COM

