

MALIBU 2020

CHEVROLET 



YOUR REQUEST FOR EXCELLENCE, BEAUTIFULLY FULFILLED.

With a sophisticated appearance and remarkable driving dynamics, the 2020 Malibu is ready to take you wherever the road leads. The turbocharged RS makes an emphatic statement, and Premier surrounds you with all-encompassing luxuries. Prepare to be impressed, because everything about Malibu reflects your own high expectations for excellence.

FIND NEW ROADS™



At left: Malibu Premier in Shadow Gray Metallic with available features.
At right: Malibu RS in Cajun Red Tintcoat (extra-cost color).

MODELS

LS

Here's the style, room and craftsmanship you expect in an award-winning midsize car.

LS keeps you connected with Apple CarPlay^{®1} and Android Auto^{™2} compatibility and an 8-inch diagonal color-touch screen display. And you'll enjoy the poised performance of a 1.5L turbocharged engine with Direct Injection and a Continuously Variable Transmission (CVT).



RS

Malibu RS makes a compelling statement as it puts an artistic spin on the sport sedan.

It is impossible to ignore the blacked-out sport grille, Black bowtie emblems, exclusive 18-inch wheels, rear spoiler and dual exhaust outlets.

Inside RS, an 8-way power driver seat with power lumbar control and a leather-wrapped steering wheel and shifter are your invitation to command the road.

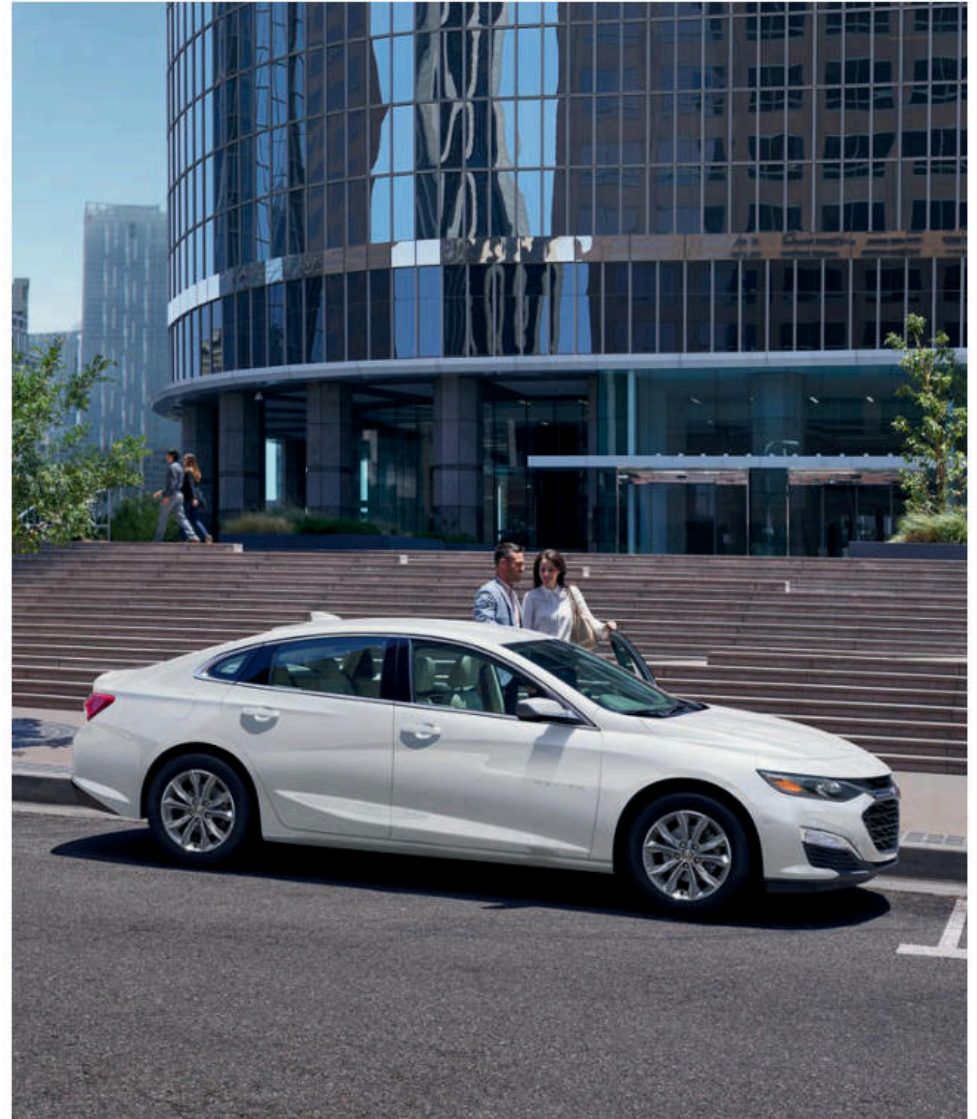


MODELS

LT

Malibu LT is the supremely quiet and responsive sedan designed to leave a lasting impression.

Signature LED daytime running lamps and LED taillamps attract attention, while stylish 17-inch aluminum wheels catch the eye. Conveniences include a remote vehicle starter system, dual-zone climate controls and heated power-adjustable mirrors.



MODELS

PREMIER

The sleek, sculpted Premier is – in every way – top of the line. At the heart of it, a 2.0L turbocharged engine and 9-speed automatic transmission are poised for performance.

The well-appointed interior features heated and ventilated front seats and heated rear outboard seats. Leather-appointed seating surfaces, a Bose 9-speaker premium audio system and a power tilt-sliding sunroof with skylight add to the ambiance.





Malibu Premier interior
in Light Wheat with
Dark Atmosphere accents.

INTERIOR DESIGN

EVERY SEAT, FIRST CLASS.

Whether you are driving across town or across the country, the seats in Malibu are contoured for optimal support. The **8-way power driver seat**, standard on RS, LT and Premier, puts you in control of your comfort.

Satin chrome is generously displayed throughout the Malibu interior for a clean, sophisticated attitude. Soft touch components exude an impressively tailored appearance.

Rear-seat passengers were kept top of mind in Malibu. That's why the design includes **generous rear-seat leg room** and rear doors that open wide to help make entry and exit easy.

Rear Seat Reminder¹ activates when the rear doors are opened and closed up to 10 minutes before or anytime while your vehicle is on, so when you turn off the vehicle under certain conditions, you will get a reminder to double-check for valuables left behind.

¹ Does not detect people or items. Always check rear seat before exiting.

Malibu RS interior in Jet Black.

EVERY DRIVE, EXCEPTIONAL.

Inside Malibu RS, sculpted Jet Black Premium Cloth bucket seats combine with a **leather-wrapped shifter and steering wheel** to enhance your driving experience.

An available **acoustic-laminated windshield**, a custom dash panel with strategic applications of laminated steel, and triple-sealed doors are just a few of the features that help keep outside noise where it belongs.



< | Report Card | X

Distance Driven: 30 miles
 Maximum Speed: 47.6 MPH
 Overspeed Warnings: 0
 Wide Open Throttle: 0
 Forward Collision Alerts: 1
 Forward Automatic Braking: 1
 Traction Control: 0
 Stability Control: 0

Reset

TECHNOLOGY

**THE MORE YOU KNOW,
 THE MORE YOU'LL LOVE.**

A **Driver Information Center** with an 8-inch diagonal reconfigurable display is standard on Premier. It allows you to choose from two screens and have at-a-glance access to important features and data.

With the standard **Chevrolet Infotainment 3 system**¹, you can easily make hands-free calls, play music and access contacts from your compatible smartphone via the touch-screen display or through voice commands.

Available **Teen Driver technology** helps encourage better driving habits by providing an in-vehicle report card that monitors the frequency of certain available safety technology feature activations, providing seat belt

reminders including Buckle to Drive and muting the audio until front-seat occupants are buckled, and giving warnings when the vehicle is traveling over a predetermined speed.

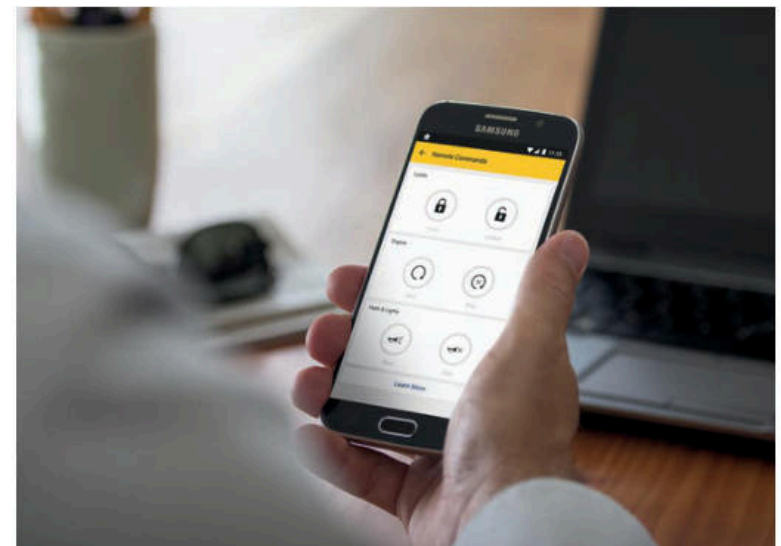
¹ Chevrolet Infotainment System functionality varies by model. Full functionality requires compatible Bluetooth and smartphone, and USB connectivity for some devices.

Available wireless charging station!

Driver Information Center with 8-inch diagonal reconfigurable display. Standard on Premier.

Apple CarPlay^{®2} integration for your iPhone[®] (shown) and Android Auto^{™3} compatibility.

Available myChevrolet Mobile App⁴; includes remote vehicle start if properly equipped (requires paid plan).



¹ The system wirelessly charges one compatible mobile device. Some phones have built-in wireless charging technology and others require a special adaptor/back cover. To check for phone or other device compatibility, see my.chevrolet.com/learn or consult your carrier. ² Vehicle user interface is a product of Apple and its terms and privacy statements apply. Requires compatible iPhone and data plan rates apply. ³ Vehicle user interface is a product of Google and its terms and privacy statements apply. Requires the Android Auto app on Google Play and an Android compatible smartphone running Android 5.0 Lollipop or higher. Data plan rates apply. ⁴ Available on select Apple and Android devices. Service availability, features and functionality vary by vehicle, device and the plan you are enrolled in. User terms apply. Device data connection required. Visit onstar.com for details and limitations.

Apple CarPlay and iPhone are trademarks of Apple Inc., registered in the U.S. and other countries. Android Auto is a trademark of Google LLC.

Malibu Premier in Northsky Blue Metallic with available features.

PERFORMANCE

ENGINEERED BY PERFECTIONISTS.

The available **2.0L turbo engine** delivers 250 horsepower and 260 lb.-ft. of torque with the 9-speed automatic transmission. This combination offers an EPA-estimated 22 MPG city/32 highway. Standard on Premier.

The **1.5L turbo engine** is paired with a Continuously Variable Transmission for power and efficiency. This engine offers 163 horsepower, 184 lb.-ft. of torque and an EPA-estimated 36 MPG highway!

Variable-effort **Electric Power Steering (EPS)** uses energy only when steering effort is applied. EPS feels light but agile, providing greater assistance at low speeds and tighter control when you're cruising at highway speeds.

The **MacPherson strut front suspension** and independently tuned 4-link rear suspension are precision calibrated for impressive ride and handling.

¹ EPA-estimated MPG city/highway: Malibu with 1.5L engine 29/36.

SAFETY AND DRIVER ASSISTANCE

READY AND VIGILANT.



Adaptive Cruise Control – Advanced. Using sensors that include radar technology, this feature can automatically adapt cruise control speed to maintain a following gap to vehicles detected ahead. Available on Premier.



Front Pedestrian Braking. At speeds below 50 mph, if an imminent collision with a pedestrian directly ahead is detected, the feature can alert you and can even apply last-second emergency braking. Performance is limited at night. Available on LT and Premier.



Enhanced Automatic Emergency Braking. If an imminent front-end collision is detected with a vehicle you are following, the feature can alert you and can automatically apply hard emergency braking or enhance driver hard braking. Available on Premier.



Following Distance Indicator and Forward Collision Alert. These features monitor how close your vehicle is to the detected vehicle in front of you and can alert you to a potential crash. Available on LT and Premier.



Lane Keep Assist with Lane Departure Warning. At speeds above 37 mph, this feature monitors road lines and can gently turn the steering wheel to help keep the vehicle in its lane or provide alerts if a lane marker is unintentionally crossed. Available on LT and Premier.



Lane Change Alert with Side Blind Zone Alert. This feature can provide side mirror alerts when it detects fast-approaching vehicles in adjacent lanes as well as moving vehicles in the side mirror blind zones. Available on LT and Premier.



Rear Vision Camera. When traveling in Reverse at low speeds, this feature helps provide a view of the area immediately behind your Malibu. Standard on all models.



Rear Cross Traffic Alert. This feature can alert you to detected vehicles crossing behind your Malibu when backing up. Available on LT and Premier.



Rear Park Assist. When traveling in Reverse at low speeds, this feature can provide distance alerts when it detects certain stationary objects in close proximity behind the vehicle. Available on LT.



Automatic Parking Assist. Helps you park by automatically steering the vehicle into a detected parking space while you follow text commands, select gears, and perform all braking and acceleration. Available on Premier.

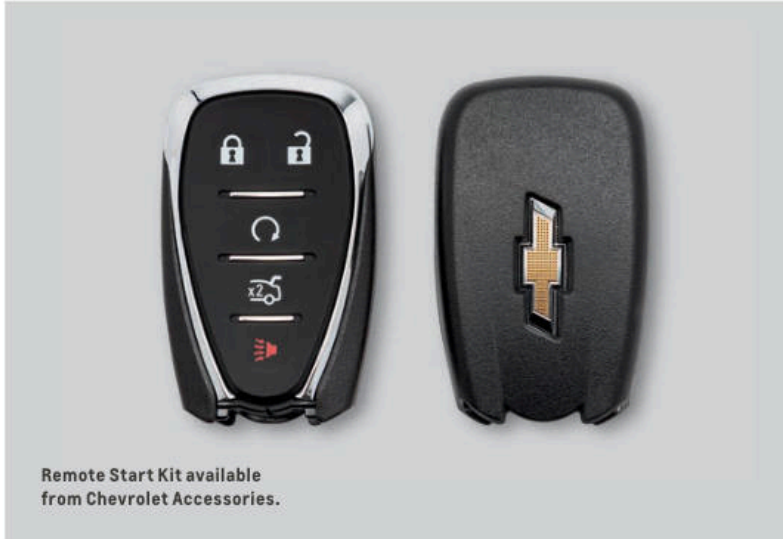


IntelliBeam® headlamps. When oncoming headlamps are sensed or when taillamps are detected, this feature intuitively adjusts between low and high beams. Available on LT and Premier.

Safety starts with you. Safety or driver assistance features are no substitute for the driver's responsibility to operate the vehicle in a safe manner. The driver should remain attentive to traffic, surroundings and road conditions at all times. Visibility, weather and road conditions may affect feature performance. Read the vehicle Owner's Manual for more important feature limitations and information.



ACCESSORIES



Remote Start Kit available from Chevrolet Accessories.



Black Illuminated Bowtie Emblem available from Chevrolet Accessories.



Cargo Net available from Chevrolet Accessories.



Floor Liners available from Chevrolet Accessories.

EXTERIOR COLORS



Summit White



Silver Ice Metallic



Stone Gray Metallic^{1,2,3}



Shadow Gray Metallic¹



Cajun Red Tintcoat^{1,2,4}



Black Cherry Metallic¹

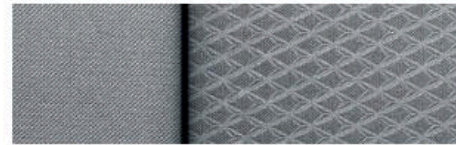


Northsky Blue Metallic^{1,2,3}



Mosaic Black Metallic¹

MODELS



Medium Ash Gray Premium Cloth



16" Aluminum Wheels
Standard on L

L Malibu L includes these features:

MECHANICAL

Brakes – 4-wheel antilock, 4-wheel disc with Duralife® rotors

Engine – 1.5L turbocharged DOHC 4-cylinder with Variable Valve Timing (VVT), Direct Injection and stop/start technology

StabiliTrak® – Electronic Stability Control System with Traction Control

Steering – power, rack-and-pinion

Suspension – front, MacPherson strut; rear, 4-link

Transmission – Continuously Variable Transmission (CVT)

EXTERIOR

Antenna – Black

Daytime running lamps

Door handles – body-color

Fuel filler – capless fueling

Headlamps – halogen, automatic on/off with automatic delay

Mirrors – power-adjustable, manual-folding with Black caps

Tire – compact spare

Tires – P205/65R16

Wipers – front variable-speed, intermittent with washers

INTERIOR

Air conditioning – manual, single-zone

Audio – 6-speaker system

Cruise control – electronic with Set and Resume Speed

Door locks – power programmable with lockout protection and manual rear door child security

Driver Information Center – monochromatic display

Entertainment – Chevrolet Infotainment 3 system¹ with 8-inch diagonal color touch-screen, AM/FM stereo, Bluetooth[®] audio streaming² for two active devices, voice command pass-through to compatible phone, and Apple CarPlay^{®3} and Android Auto^{™4} compatibility

Floor mats – carpeted front and rear

INTERIOR (CONTINUED)

Keyless Open and Start – includes extended-range Remote Keyless Entry

LATCH system – Lower Anchors and Tethers for Children, for child restraint systems

Lighting – front-seat reading lamps, overhead courtesy lamp and illuminated trunk area

Media – USB ports;⁵ one type-A and one type-C, and auxiliary input jack in front center stack storage area

Rear Seat Reminder⁶

Rear Vision Camera⁷

Seat – rear, 60/40 split-folding

Seats – driver and front passenger 6-way manual adjusters

Steering column – manual tilt and telescopic

Steering wheel – 3-spoke, deluxe with mounted audio, cruise and phone controls

Theft-deterrent system – unauthorized entry

Tire Pressure Monitor – with Tire Fill Alert (does not monitor spare tire, if equipped)

Trunk cargo anchors

Windows – power with express-down, all windows

¹ Chevrolet Infotainment System functionality varies by model. Full functionality requires compatible Bluetooth and smartphone, and USB connectivity for some devices. ² Go to my.chevrolet.com/learnAbout/bluetooth to find out which phones are compatible with the vehicle. Full Bluetooth feature functionality varies by device, model and software version. ³ Vehicle user interface is a product of Apple and its terms and privacy statements apply. Requires compatible iPhone and data plan rates apply. ⁴ Vehicle user interface is a product of Google and its terms and privacy statements apply. Requires the Android Auto app on Google Play and an Android compatible smartphone running Android 5.0 Lollipop or higher. Data plan rates apply. ⁵ Not compatible with all devices. ⁶ Does not detect people or items. Always check rear seat before exiting. ⁷ Read the vehicle Owner's Manual for important feature limitations and information.

MODELS (CONTINUED)



LS In addition to or replacing L features, LS includes:

EXTERIOR

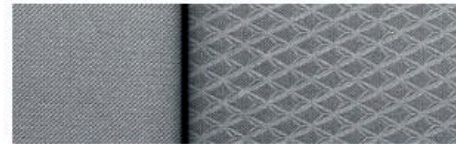
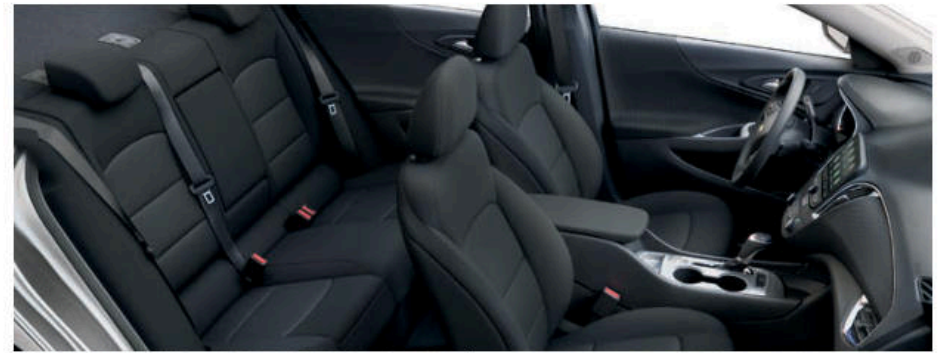
Glass – acoustic-laminated windshield

INTERIOR

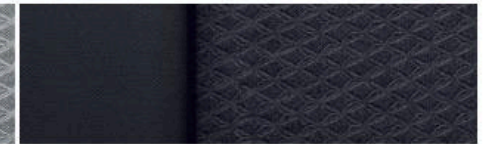
Compass – digital, in Driver Information Center

Teen Driver technology

Visors – driver and front passenger, covered vanity mirrors



Medium Ash Gray Premium Cloth

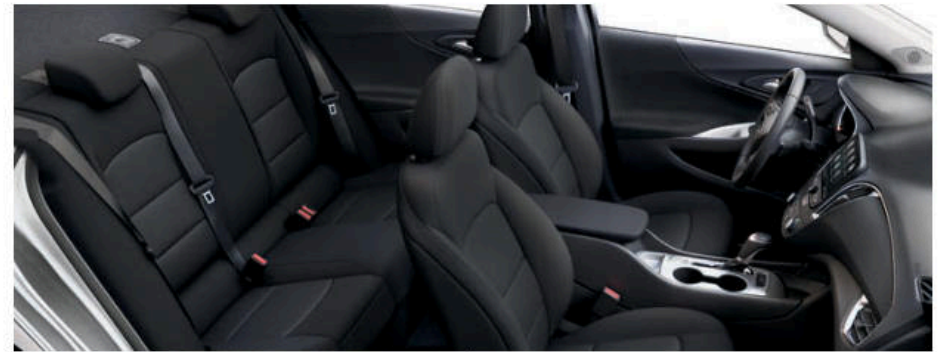


Jet Black Premium Cloth (shown)



16" Aluminum Wheels
Standard on LS

MODELS (CONTINUED)



Jet Black Premium Cloth

RS In addition to or replacing LS features, RS includes:

MECHANICAL

Exhaust – dual-outlet with polished tips

EXTERIOR

Antenna – body-color

Mirrors – power-adjustable, manual-folding with body-color caps

RS accents – Black grille inserts with chrome surround, Black bowtie emblems and Black Malibu badges

Spoiler – rear

Tires – P245/45R18

INTERIOR

Seat – driver 8-way power adjuster with power lumbar control

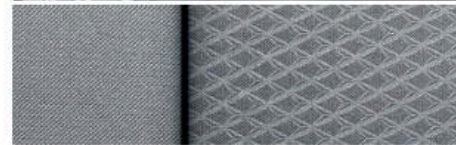
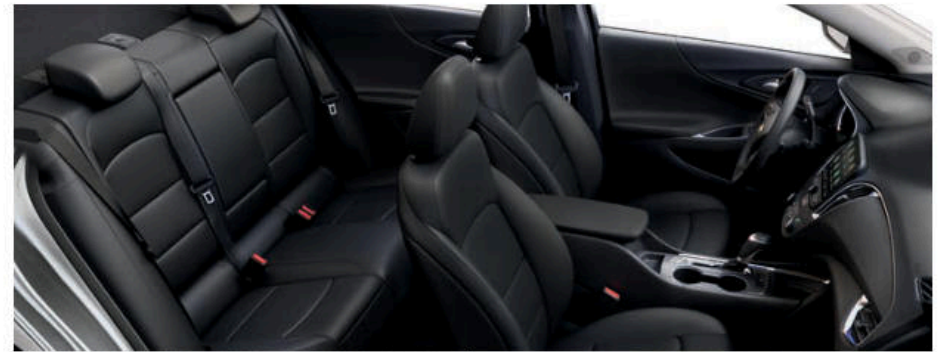
Shift knob – leather-wrapped

Steering wheel – leather-wrapped

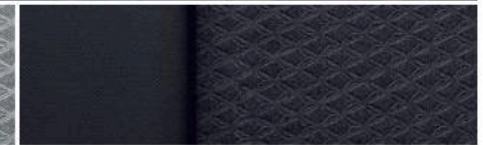


18" Aluminum Wheels
Standard on RS

MODELS (CONTINUED)



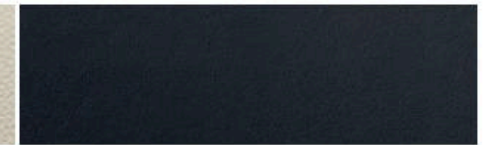
Medium Ash Gray Premium Cloth



Jet Black Premium Cloth



Light Wheat Leather-Appointed Seating Surfaces²



Jet Black Leather-Appointed Seating Surfaces² (shown)



17" Aluminum Wheels
Standard on LT



19" Black-Painted Aluminum Wheels with Red Accents
Available on LT with Redline Edition³

LT In addition to or replacing LS features, LT includes:

EXTERIOR

Antenna – body-color

Daytime running lamps – LED

Mirrors – heated, power-adjustable, manual-folding with body-color caps

Taillamps – LED

Tires – P225/55R17

INTERIOR

Air conditioning – automatic, dual-zone with individual climate settings for driver and front passenger

Lighting – rear-seat reading lamps

Remote vehicle starter system

Seat – driver 8-way power adjuster with power lumbar control

Seats – heated driver and front passenger

SiriusXM[®] Radio¹ – All Access Package with 3-month trial subscription

Vents – rear console

Visors – driver and front passenger, covered illuminated vanity mirrors

Windows – power with driver express-up/-down, all others express-down

¹ If you decide to continue service after your trial, your selected subscription plan will automatically renew thereafter. You will be charged at then-current rates. Fees and taxes apply. Please see the SiriusXM Customer Agreement at siriusxm.com for complete terms and how to cancel, which includes calling SiriusXM at 1-866-635-2349. All fees and programming are subject to change. ² Requires available Leather Package. ³ Late availability.

MODELS (CONTINUED)



Light Wheat Perforated Leather-Appointed Seating Surfaces (shown)

Jet Black Perforated Leather-Appointed Seating Surfaces



19" Aluminum Wheels
Standard on Premier

PREMIER In addition to or replacing LT features, Premier includes:

MECHANICAL

Engine – 2.0L turbocharged DOHC 4-cylinder with Variable Valve Timing (VVT) and Direct Injection

Exhaust – dual-outlet with polished tips

Transmission – 9-speed automatic with overdrive

EXTERIOR

Door handles – chrome with body-color inserts

Headlamps – LED

Mirrors – heated, power-adjustable, manual folding with body-color caps and integrated turn signal indicators

Tire inflator kit

Tires – P245/40R19

INTERIOR

Audio – Bose premium 9-speaker audio system

Driver Information Center – enhanced 8-inch diagonal multi-color reconfigurable display

Entertainment – Chevrolet Infotainment 3 Plus with Navigation system¹; includes 8-inch diagonal HD color touch-screen, Connected Navigation²; AM/FM stereo, Bluetooth[®] audio streaming³ for two active devices, Apple CarPlay^{™4} and Android Auto^{™5} compatibility, enhanced voice recognition and in-vehicle apps⁶

Lighting – LED light pipes on instrument panel, front doors and map pockets

Media – charge-only USB port⁷ on rear of center console

Memory – recalls two presets for 8-way power driver seat and outside mirrors

Mirror – rearview, auto-dimming

Power outlet – 120-volt on rear of center console

Rear Vision Camera⁸ – HD

Seat – front passenger 6-way power adjuster with power lumbar control

INTERIOR (CONTINUED)

Seats – ventilated driver and front passenger; heated rear outboard seating positions

Shift knob – leather-wrapped

Sill plates – front, bright

Steering wheel – heated, leather-wrapped

Sunroof – power, tilt-sliding, with fixed rear skylight and sunshade

Trunk mat – carpeted

Wireless charging⁹

¹ Chevrolet Infotainment System functionality varies by model. Full functionality requires compatible Bluetooth and smartphone, and USB connectivity for some devices. Map coverage available in the United States, Puerto Rico and Canada.

² Connected Navigation and Real-time Points of Interest (POI) only available on properly equipped vehicles. Requires paid plan or trial. Map coverage available in the United States, Puerto Rico and Canada. Visit onstar.com for details and limitations.

³ Go to my.chevrolet.com/learnAbout/bluetooth to find out which phones are compatible with the vehicle. Full Bluetooth feature functionality varies by device, model and software version. ⁴ Vehicle user interface is a product of Apple and its terms and privacy statements apply. Requires compatible iPhone and data plan rates apply. ⁵ Vehicle user interface is a product of Google and its terms and privacy statements apply. Requires the Android Auto app on Google Play and an Android compatible smartphone running Android 5.0 Lollipop or higher. Data plan rates apply. ⁶ Requires active service plan and paid AT&T vehicle data plan or compatible device with 3G/4G LTE tethering data plan. Visit onstar.com for details and limitations. ⁷ Not compatible with all devices. ⁸ Read the vehicle Owner's Manual for important feature limitations and information. ⁹ The system wirelessly charges one compatible mobile device. Some phones have built-in wireless charging technology and others require a special adaptor/back cover. To check for phone or other device compatibility, see my.chevrolet.com/learn or consult your carrier.

SPECIFICATIONS

● STANDARD ○ AVAILABLE – NOT AVAILABLE

	L	LS	RS	LT	PREMIER
ENGINE/CHASSIS					
Engine: 1.5L turbocharged DOHC 4-cylinder with Variable Valve Timing (VVT), Direct Injection and stop/start technology; 163 hp @ 5700 rpm, 184 lb.-ft. of torque @ 2500-3000 rpm	●	●	●	●	–
2.0L turbocharged DOHC 4-cylinder with Variable Valve Timing (VVT) and Direct Injection; 250 hp @ 5300 rpm, 260 lb.-ft. of torque @ 2000-5000 rpm	–	–	–	–	●
Transmission: Continuously Variable Transmission (CVT)	●	●	●	●	–
9-speed automatic, electronically controlled with overdrive	–	–	–	–	●
SAFETY & SECURITY					
Airbags: ¹ Frontal and knee airbags for driver and front passenger; seat-mounted side-impact airbags and head-curtain airbags for front and rear outboard seating positions; includes Passenger Sensing System for frontal passenger airbag	●	●	●	●	●
Automatic Emergency Braking ² (requires available Driver Confidence Package II on LT)	–	–	–	○	–
Automatic Parking Assist ² (requires available Enhanced Driver Confidence Package)	–	–	–	–	○
Enhanced Automatic Emergency Braking ² (requires available Enhanced Driver Confidence Package)	–	–	–	–	○
Following Distance Indicator ² and Forward Collision Alert ² (requires available Driver Confidence Package II on LT; requires available Enhanced Driver Confidence Package on Premier)	–	–	–	○	○
Front Pedestrian Braking ² (requires available Driver Confidence Package II on LT; requires available Enhanced Driver Confidence Package on Premier)	–	–	–	○	○
IntelliBeam headlamps: Automatic high beam on/off (requires available Driver Confidence Package II on LT; requires available Enhanced Driver Confidence Package on Premier)	–	–	–	○	○
Lane Change Alert with Side Blind Zone Alert ² (requires available Driver Confidence Package on LT; requires available Enhanced Driver Confidence Package on Premier)	–	–	–	○	○
Lane Keep Assist with Lane Departure Warning ² (requires available Driver Confidence Package II on LT; requires available Enhanced Driver Confidence Package on Premier)	–	–	–	○	○
Rear Cross Traffic Alert ² (requires available Driver Confidence Package on LT; requires available Enhanced Driver Confidence Package on Premier)	–	–	–	○	○
Rear Park Assist ² (requires available Driver Confidence Package on LT)	–	–	–	○	–
1 month of OnStar Safety & Security Plan coverage ³ , which includes Automatic Crash Response, Emergency Services, Stolen Vehicle Assistance, Roadside Assistance and Turn-by-Turn Navigation ⁴	●	●	●	●	●

	L	LS	RS	LT	PREMIER
INTERIOR					
Adaptive Cruise Control – Advanced ² (requires available Enhanced Driver Confidence Package)	–	–	–	–	○
Remote vehicle starter system	–	○	○	●	●
Sunroof: Power, tilt-sliding, with fixed rear skylight and sunshade (requires available Leather Package, Driver Confidence Package and Driver Confidence Package II on LT)	–	–	–	○	●
ENTERTAINMENT					
SiriusXM [®] Radio ⁵ All Access Package with 3-month trial subscription	–	–	–	●	●
Built-in 4G LTE Wi-Fi ⁶ hotspot for up to seven devices, includes 1 month or 3 GB of data (whichever comes first)	–	○	○	○	○
Chevrolet Connected Access ⁷ with 10 years of standard connectivity, which currently enables features such as Vehicle Diagnostics and Dealer Maintenance Notification	●	●	●	●	●
PACKAGES AND SPECIAL EDITIONS					
Redline Edition	–	–	–	○	–
19" Black-painted aluminum wheels with Red accents, Black bowtie emblems, Redline-specific Black grille, Black Malibu badges with Red outline and Black mirror caps (late availability)	–	–	–	○	–
Leather Package	–	–	–	○	–
Leather-appointed seating surfaces, heated leather-wrapped steering wheel, leather-wrapped shift knob and inside rearview auto-dimming mirror	–	–	–	○	–
Driver Confidence Package ²	–	–	–	○	–
Rear Park Assist, Rear Cross Traffic Alert and Lane Change Alert with Side Blind Zone Alert	–	–	–	○	–
Driver Confidence Package II	–	–	–	○	–
IntelliBeam high beam assist, Lane Keep Assist with Lane Departure Warning ² ; Forward Collision Alert ² ; Following Distance Indicator ² and Front Pedestrian Braking ² (includes Automatic Emergency Braking ²) (requires available Driver Confidence Package)	–	–	–	○	–
Enhanced Driver Confidence Package	–	–	–	–	○
Adaptive Cruise Control – Advanced ² ; Automatic Parking Assist ² ; Lane Change Alert with Side Blind Zone Alert ² ; Rear Cross Traffic Alert ² ; Lane Keep Assist with Lane Departure Warning ² ; IntelliBeam high beam assist, Following Distance Indicator ² ; Forward Collision Alert ² ; Enhanced Automatic Emergency Braking ² ; Front Pedestrian Braking ² and electronic parking brake	–	–	–	–	○

1 A NOTE ON CHILD SAFETY: Always use seat belts and the correct child restraint for your child's age and size, even with airbags. Even in vehicles equipped with the Passenger Sensing System, children are safer when properly secured in a rear seat in the appropriate infant, child or booster seat. Never place a rear-facing infant restraint in the front seat of any vehicle equipped with an active frontal airbag. See your vehicle Owner's Manual and the child safety seat instructions for more safety information. **2** Read the vehicle Owner's Manual for important feature limitations and information. **3** OnStar plan, working electrical system, cell reception and GPS signal required. OnStar links to emergency services. Not all vehicles may transmit all crash data. Roadside services provided by Allstate Roadside Services for vehicles only. Limitations and restrictions apply. Stolen Vehicle Assistance requires armed GM factory-installed theft-deterrent system, contact method on file and enrollment to receive alerts. Services are intended to assist with vehicle recovery and do not prevent theft or protect against damage or loss. Visit onstar.com for details and limitations. Availability subject to change. **4** Advisor-based Turn-by-Turn Navigation is subject to User Terms and limitations, and varies by vehicle model. Map coverage available in the United States, Puerto Rico and Canada. **5** If you decide to continue service after your trial, your selected subscription plan will automatically renew thereafter. You will be charged at then-current rates. Fees and taxes apply. Please see the SiriusXM Customer Agreement at siriusxm.com for complete terms and how to cancel, which includes calling SiriusXM at 1-866-635-2349. All fees and programming are subject to change. **6** Service varies with conditions and location. Requires active service plan. Data plans offered by AT&T. Visit onstar.com for details and limitations. Availability subject to change. **7** Standard connectivity available only to original purchaser for 10 years. Connected Access services are subject to change. Does not include emergency or security services. Diagnostic capabilities vary by model and service plan. Message and data rates may apply. Requires contact method on file and enrollment to receive alerts. Not all issues will deliver alerts. Visit onstar.com for details and limitations.

DIMENSIONS

Length	194.2"
Wheelbase	111.4"
Height	57.3"

Width	73.0"
Front Track	62.6"
Rear Track	62.5"

Head Room (front/rear)	39.1"/37.5"
Leg Room (front/rear)	41.5"/38.1"
Shoulder Room (front/rear)	58.5"/57.1"

MAXIMUM CAPACITIES

Fuel tank (approximate)	15.8 gallons
Passenger volume	102.5 cubic feet
Seating	Seats 5
Cargo volume ¹	15.7 cubic feet



Experience Chevrolet Complete Care, a comprehensive coverage, warranty and protection program that comes standard with every new 2020 Chevrolet Malibu lease and purchase. Simply, it is designed around you, to make it easy to keep your Chevrolet like new – and give you the confidence you deserve when you need it most.

EPA-ESTIMATED FUEL ECONOMY

1.5L Turbo	29 MPG city/36 highway/32 combined
2.0L Turbo	22 MPG city/32 highway/26 combined

Your comprehensive owner benefit program.

Includes one maintenance visit (oil change, tire rotation and multi-point vehicle inspection)²

5 years/60,000 miles³ of Roadside Assistance⁴ and Courtesy Transportation.

3-year/36,000-mile³ Bumper-to-Bumper Limited Warranty.

5-year/60,000-mile³ Powertrain Limited Warranty.

6 years/100,000 miles³ of Rust-Through Protection.

Chevrolet Connected Access⁵ with 10 years of standard connectivity, which currently enables features such as Vehicle Diagnostics and Dealer Maintenance Notification.

1 month of Chevrolet Connected Services⁶ and 1 month of OnStar Safety & Security Plan coverage⁶

NEW VEHICLE LIMITED WARRANTY

3-year/36,000-mile Bumper-to-Bumper Limited Warranty. Chevrolet will warrant each 2020 Malibu from bumper to bumper for 3 years/36,000 miles (whichever comes first; see dealer for details), with no deductible, from the original in-service date of the vehicle, for warrantable repairs that are required as a result of defects due to materials and/or workmanship. Cosmetic corrosion resulting from defects is also covered under the Bumper-to-Bumper Limited Warranty. In addition, rust-through corrosion will be covered for 6 years/100,000 miles (whichever comes first). See dealer for details.

5-year/60,000-mile transferable Powertrain Limited Warranty. Every 2020 Malibu comes with a 5-year/60,000-mile (whichever comes first) transferable Powertrain Limited Warranty. 24/7 Roadside Assistance and Courtesy Transportation are also offered for the duration of the Powertrain Limited Warranty. Please see your Chevrolet dealer for details.

¹ Cargo and load capacity limited by weight and distribution. ² Maintenance visit must occur within first year of vehicle delivery. Service visit consists of ACDelco dexos1™ Full Synthetic Oil and Filter Change/Tire Rotation/MPVI. Does not include air filters. See participating dealer for other restrictions and complete details. ³ Whichever comes first. See dealer for details. ⁴ Roadside service provided by Allstate Roadside Services. Limitations apply. ⁵ Standard connectivity available only to original purchaser for 10 years. Services enabled by Connected Access are subject to change. Does not include emergency or security services. Diagnostic capabilities vary by model and service plan. Message and data rates may apply. Requires contact method on file and enrollment to receive alerts. Not all issues will deliver alerts. Visit onstar.com for details and limitations. ⁶ Connected services include navigation services and Remote Access Plan. Services subject to terms and limitations. Certain services require working electrical system, cell reception and GPS signal. OnStar links to emergency services. Visit onstar.com for details. Availability subject to change.

IMPORTANT INFORMATION

Chevrolet Owner Center (my.chevrolet.com). Everything you need to know. Anything you need to do. Your Chevrolet Owner Center makes it easy. Create your account today to get the most out of your new vehicle. Get special alerts and offers, schedule service, review your maintenance schedule, and view how-to videos specifically for your vehicle. All online, anytime. Visit the Owner Center today to register or take a tour.

Engines. Chevrolet products are equipped with engines produced by GM Global Propulsion Systems or other suppliers to GM worldwide. The engines in Chevrolet products may also be used in other GM makes and models.

Assembly. Chevrolet vehicles and their components are assembled or produced by different operating units of General Motors, its subsidiaries or suppliers to GM worldwide. We sometimes find it necessary to produce Chevrolet vehicles with different or differently sourced components than originally scheduled. Since some options may be unavailable when your vehicle is assembled, we suggest you verify that your vehicle includes the equipment you ordered and that, if there were changes, they are acceptable to you.

Chevrolet Connected Services and OnStar. Connected vehicle services vary by vehicle model and require an active service plan, working vehicle electrical system (including battery), cell reception and GPS signal to function properly. Visit onstar.com for details and limitations.

A note on child safety. Always use seat belts and the correct child restraint for your child's age and size, even with airbags. Even in vehicles equipped with the Passenger Sensing System, children are safer when properly secured in a rear seat in the appropriate infant, child or booster seat. Never place a rear-facing infant restraint in the front seat of any vehicle equipped with an active frontal airbag. See your vehicle Owner's Manual and the child safety seat instructions for more safety information.

Important words about this catalog. We have tried to make this catalog comprehensive and factual. We reserve the right, however, to make changes at any time, without notice, in prices, colors, materials, equipment, specifications, models and availability. Specifications, dimensions, measurements, ratings and other numbers in this catalog

and other printed materials provided at the dealership or affixed to vehicles are approximations based on design and engineering drawings, prototypes and laboratory tests. Your vehicle may differ due to variations in manufacture and equipment. Since some information may have been updated since the time of printing, please check with your Chevrolet dealer for complete details. Chevrolet reserves the right to lengthen or shorten the model year for any product for any reason or to start and end model years at different times. Certain vehicle features may lose their usefulness over time due to obsolescence from technological changes. Unless otherwise noted, all claims based on GM Mid-Car Sedan segment and latest available competitive information. Excludes other GM vehicles.

Fleet orders. Some standard content may be deleted on fleet orders. See dealer for details.

Chevrolet ownership experience. Chevrolet is committed to enhancing the vehicle shopping and ownership experience through a wide array of programs. Visit chevrolet.com to build and price, find a vehicle, request a quote, compare vehicles, find financial tools or track your vehicle order. You'll also find information about 24-hour Roadside Assistance, Courtesy Transportation, Customer Assistance, GM Mobility, safety and current incentives.

Chevrolet.com/safety. Chevrolet is committed to keeping you and your family safe – from the start of your journey to your destination. That's why every Chevrolet is designed with a comprehensive list of safety and security features to help give you peace of mind.

GMmobility.com (1-800-323-9935). GM Mobility™ offers financial assistance for eligible adaptive equipment to make automotive travel easier for persons with disabilities or special transportation needs. To learn more about special GM Mobility offers, visit gmmobility.com.

The BuyPower Card. The Chevrolet BuyPower Card – Every purchase you make with the BuyPower Card from Capital One* helps you earn toward an eligible new Chevrolet, Buick, GMC or Cadillac vehicle. There's no limit on the amount you can earn or redeem, and your Earnings don't expire. Visit chevroletbuypowercard.com/catalogs.

* Capital One, N.A. is the issuer of the BuyPower Card. General Motors ("GM") is responsible for the operation and administration of the Earnings program.



GM, the GM logo, Chevrolet, the Chevrolet logo, and the slogans, emblems, vehicle model names, vehicle body designs and other marks appearing in this catalog are the trademarks and/or service marks of General Motors, its subsidiaries, affiliates or licensors. ©2019 OnStar LLC. All rights reserved. Sirius, XM, SiriusXM and all related marks and logos are trademarks of Sirius XM Radio Inc. The Bluetooth word mark is a registered trademark owned by Bluetooth SIG, Inc., and any use of such mark by Chevrolet is under license. Bose is a registered trademark of the Bose Corp.

©2019 General Motors. All rights reserved. June 2019

FIND NEW ROADS™

CHEVROLET.COM

