

**SUBURBAN 2018**

**CHEVROLET**



Suburban Premier in Black  
with available features.



### ***AN AMERICAN ORIGINAL.***

The iconic Suburban offers more of everything you expect – uncommon spaciousness, commanding performance and ingenious safety technology.

The luxury is all-encompassing. The capability is exceptional. Everything about Suburban makes it the ideal vehicle for the modern family that doesn't know where the next path will take them, but is always ready for what's ahead. Especially with the available Z71 Off-Road Package.

Discover why, year after year, the legendary Suburban is part of America's best-selling family of full-size SUVs.

**FIND NEW ROADS™**

**SPECIAL EDITIONS**

**LT MIDNIGHT EDITION**

20-INCH BLACK-PAINTED ALUMINUM WHEELS  
WITH ALL-SEASON TIRES

FRONT AND REAR BLACK BOWTIE EMBLEMS

BLACK ROOF RACK CROSS RAILS



Suburban LT Midnight Edition in Black.

**RST EDITION**

EXCLUSIVE 22-INCH GLOSS BLACK WHEELS  
WITH CUSTOM SILVER ACCENTS

UNIQUE SPORT GRILLE WITH BODY-COLOR  
SURROUND

BODY-COLOR DOOR HANDLES

GLOSS BLACK GRILLE

BLACK ROOF RAILS, WINDOW TRIM, MIRROR  
CAPS AND BOWTIE EMBLEMS



Suburban in Summit White  
with available RST Edition.

## EXTERIOR DESIGN



Suburban LT in Tungsten Metallic with available Signature Package.

### **SIGNATURE STARTS WITH STYLE.**

Every feature of the available Signature Package elevates LT. Chrome is abundant in the form of 20-inch wheels, assist steps, a mesh grille, bodyside moldings and recovery hooks. The look is punctuated with a polished exhaust tip.

### **SIGNATURE INCLUDES LUXURY.**

Inside, you'll find power-release second-row and power-folding third-row bench seats, along with heated second-row seats, a heated steering wheel, a power-tilt steering column, push-button start and more. Outside, a hands-free programmable power liftgate, full-feature mirrors and

foglamps are complemented by Front and Rear Park Assist, Lane Change Alert with Side Blind Zone Alert and Rear Cross Traffic Alert. All of these features are part of the Luxury or Texas Edition Packages. You'll have your choice of either with the available Signature Package.



Suburban LT in Blue Velvet Metallic  
with available Z71 Off-Road Package.

**DRIVE ON.** Suburban with the available Z71 Off-Road Package takes capability to an even higher level. Z71 features a special off-road suspension, Autotrac<sup>®</sup> 2-speed active transfer case, Hill Descent Control, plus Front and Rear Park Assist. Z71 has the style to match its hardware, with a unique grille design, 18-inch wheels with all-terrain tires and special "Z71" identification.



WANT MORE INFO?  
GO TO [CHEVY.COM/SUBURBAN](http://CHEVY.COM/SUBURBAN)

**INTERIOR DESIGN**



**Suburban Premier interior in  
Cocoa/Dune with perforated  
leather appointments and  
available features.**

**1. DUAL-LEVEL STORAGE.**

The configurable underfloor Cargo Management System in the rear cargo area offers a convenient space to keep items hidden and organized.

**2. FIRST-RATE ORGANIZATION.**

A thoughtfully designed dealer-installed Front Floor Console Organizer is available from Chevrolet Accessories and helps keep everyday items well ordered. The front floor console alone provides enough room for a laptop or other large items.



**3. EVERYTHING CLOSE AT HAND.**

Important items are never out of reach with door storage for water bottles, umbrellas, maps and more.

**4. HIDE WHAT OTHERS SEEK.** The 8-inch diagonal color touch-screen slides up to reveal a password-protected area behind the display with space for cell phones, wallets or other valuables. Additionally, a USB port<sup>1</sup> gives you one more place to charge your devices.



<sup>1</sup> Not compatible with all devices.



**FAST FLAT-FOLDING SEATS.**

Suburban has available power-release second-row and power-folding third-row seats that fold flat fast. The conveniently placed buttons allow you to go from passenger space to cargo space in no time at all.

**ALL THE ROOM YOU NEED.** With the second- and third-row seats folded flat, you'll have 121.7 cu. ft. of cargo space.<sup>1</sup> With all that room, it's no wonder Suburban has been a favorite of American families for decades.

**VERSATILE AT EVERY TURN.**

There's space available for up to nine passengers, with the option for second-row bench or bucket seats, and second and third rows that fold flat, so Suburban is ready for anything your day might hold.

**OPENING IS EFFORTLESS.** Standard on Premier and available on LT, the hands-free programmable power liftgate ensures you'll worry less about the liftgate being out of your reach. A sensor under the rear bumper allows you to open the liftgate with a gentle kicking motion.

<sup>1</sup> Cargo and load capacity limited by weight and distribution.

## TECHNOLOGY



Suburban Premier interior in Cocoa/Dune with available features.

### **Apple CarPlay™ COMPATIBILITY.<sup>1</sup>**

Take some of your most used compatible iPhone® features and put them on your vehicle's touch-screen display in a smart, simple manner. Access your Phone, Music, Maps and Messages, as well as some of your other favorite apps.

### **MAINTAIN YOUR CONNECTIONS.**

Chevrolet offers OnStar 4G LTE plus an available built-in Wi-Fi® hotspot<sup>2</sup> providing a fast and reliable connection with bandwidth for up to seven devices, offering a better in-vehicle experience than your smartphone.

**SIRIUSXM SATELLITE RADIO.<sup>3</sup>** Listen to over 150 channels of commercial-free music from every genre, live play-by-play sports, the biggest news and talk, and the hottest entertainment, 24/7, during the trial period. The available All Access Package lets you listen to all of it everywhere – in your vehicle, at home or in the office on your computer, or on your smartphone or tablet.

### **YOUR PERSONAL PROGRAM DIRECTOR.**

Chevrolet MyLink<sup>4</sup> lets you program dozens of favorites, including radio stations, contacts, destinations (requires available Chevrolet MyLink Radio with Navigation<sup>4</sup>), music and other media.

<sup>1</sup> Vehicle user interface is a product of Apple and its terms and privacy statements apply. Requires compatible iPhone and data plan rates apply. <sup>2</sup> Requires a compatible mobile device, active OnStar service and data plan. 4G LTE service available in select markets. Visit [onstar.com](http://onstar.com) for coverage map, details and system limitations. Data plans provided by AT&T. <sup>3</sup> If you decide to continue service after your trial, the subscription plan you choose will automatically renew thereafter and you will be charged according to your chosen payment method at then-current rates. Fees and taxes apply. To cancel you must call SiriusXM at 1-866-635-2349. See SiriusXM Customer Agreement for complete terms at [siriusxm.com](http://siriusxm.com). All fees and programming subject to change. <sup>4</sup> MyLink functionality varies by model. Full functionality requires compatible Bluetooth and smartphone, and USB connectivity for some devices. Map coverage available in the United States, Puerto Rico and Canada.

Apple CarPlay is a trademark of Apple Inc. iPhone is a trademark of Apple Inc., registered in the U.S. and other countries.

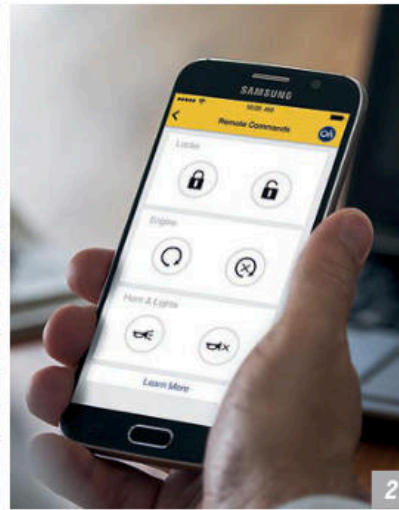
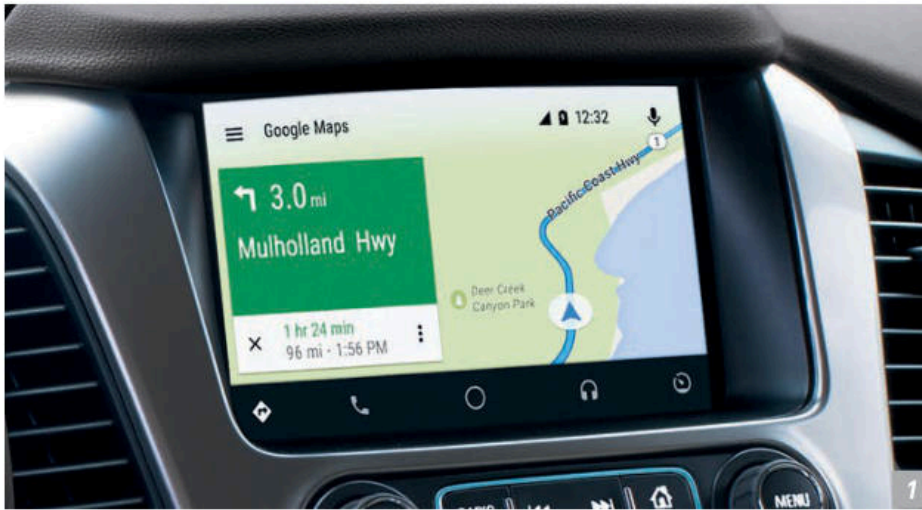


**SHOP!** Easily browse, choose and install select apps that enhance your driving experience so it gets better every day. Using your vehicle's touch-screen, you can customize your content with music, audiobooks, weather and more.

**YOU'RE IN CHARGE.** With as many as 14 charging locations, including an available wireless charging pad<sup>2</sup> and up to seven USB ports<sup>3</sup> to connect phones, tablets and other portable devices, you'll always be able to stay in touch with your world.

**LUXURY IS A HOT TOPIC.** A heated steering wheel is standard on Premier and available on LT, offering warm comfort on a cold day.

<sup>1</sup> Visit [chevrolet.com](http://chevrolet.com) for details about Shop. <sup>2</sup> The system wirelessly charges one PMA- or Qi-compatible mobile device. Some devices require an adaptor or back cover. To check for phone or other device compatibility, visit [my.chevrolet.com/learn](http://my.chevrolet.com/learn).  
<sup>3</sup> Not compatible with all devices.



<sup>1</sup> Vehicle user interface is a product of Google and its terms and privacy statements apply. Requires the Android Auto app on Google Play and an Android compatible smartphone running Android 5.0 Lollipop or higher and data plan rates apply. <sup>2</sup> MyLink functionality varies by model. Full functionality requires compatible Bluetooth and smartphone, and USB connectivity for some devices. <sup>3</sup> Requires active OnStar service, compatible device, factory-installed remote start and power locks. Data rates apply. Visit [onstar.com](http://onstar.com) for details and system limitations. <sup>4</sup> Map coverage available in the United States, Puerto Rico and Canada. <sup>5</sup> Requires Wi-Fi connection and compatible device.

Android, Android Auto, Google, Google Play and other marks are trademarks of Google Inc.

### 1. ANDROID AUTO COMPATIBILITY!

You can quickly and intuitively interact with select smartphone apps with support for Android Auto.<sup>1</sup> This system takes some of your compatible Android phone's features and puts them on the Chevrolet MyLink<sup>2</sup> display. You can access your navigation, phone, text messages, music and more.

### 2. myChevrolet Mobile App<sup>3</sup>

Simply download the app to your compatible smartphone and if your vehicle is properly equipped, you can start or turn off the engine, lock/unlock the doors and send destinations to your available navigation<sup>4</sup> system.

**3. THAT'S ENTERTAINMENT.** The available Rear-Seat Blu-ray<sup>®</sup> Entertainment System with two screens lets rear-seat passengers enjoy every drive with their favorite movies. With an HDMI connection and Wi-Fi,<sup>5</sup> it's possible to project to the screens from your mobile devices.

### 4. AN EYE FOR INFORMATION.

The available color Head-Up Display projects information, such as speed and turn-by-turn navigation (if equipped), onto the windshield while you're driving so you can keep your eyes on the road. The Driver Information Center also provides critical data at a glance.



## WE'VE GOT YOU COVERED.



**ADAPTIVE CRUISE CONTROL.** This available feature enhances cruise control by allowing the vehicle to automatically follow a detected vehicle at the driver-selected following gap, reducing the need to frequently brake and accelerate.



**FORWARD AUTOMATIC BRAKING.** If the system determines a front-end collision is imminent with a detected vehicle ahead, and the driver has not already applied the brakes, this available system automatically engages the brakes to help reduce the collision's severity. The system may even help avoid contact at very low speeds.



**LOW SPEED FORWARD AUTOMATIC BRAKING.** If the vehicle is traveling at a low speed and this available system detects that a front-end collision situation is imminent while following a detected vehicle and the driver has not already applied the brakes, it automatically applies the brakes to help reduce the collision's severity. The system may even help avoid a collision at very low speeds.



**FORWARD COLLISION ALERT.** This available feature helps identify vehicles ahead and warns the driver of possible front-end collision threats, helping provide time to stop and/or change course. If the system determines that a front-end collision with a detected vehicle is imminent, it alerts the driver to a potential crash. It also warns the driver if their Suburban is following a detected vehicle much too closely.



**LANE KEEP ASSIST WITH LANE DEPARTURE WARNING.** At speeds above 37 mph, this available camera-based system monitors road lines and will gently turn the steering wheel if the vehicle begins changing lanes without the use of a turn signal.



**AVAILABLE LANE CHANGE ALERT WITH SIDE BLIND ZONE ALERT.** Radar sensors in the rear corners of the vehicle help detect fast-approaching vehicles in the adjacent lanes as well as vehicles in the side mirror blind zones. Amber icons in the exterior mirrors indicate a vehicle's presence.



**REAR CROSS TRAFFIC ALERT.** Using the same radar sensors as Lane Change Alert, this available feature alerts you to crossing traffic behind your Suburban when backing up. If an approaching vehicle is detected, the driver is warned with visual alerts and directional seat cushion vibrations.



**REAR VISION CAMERA.** Standard on Suburban, the rear vision camera displays a view of the area immediately behind the vehicle on the 8-inch diagonal color touch-screen – making it easier to see what's behind you while backing up.



**FRONT AND REAR PARK ASSIST.** Ideal when pulling into a parking spot at low speeds, this available system senses stationary objects and warns you if an object is too close. As you shift into Reverse, the rear vision camera automatically displays a live image of the

area behind the vehicle on the 8-inch diagonal color touch-screen and includes guiding lines to help when backing up.



**TEEN DRIVER.** This technology helps encourage better driving habits in a number of ways. It includes an in-vehicle report card that displays the frequency of select available safety tech feature (if equipped) activations. It mutes the audio system when front-seat occupants aren't wearing their safety belts, and gives audible and visual warnings when the vehicle is traveling over a predetermined speed.



**INTELLIBEAM HEADLAMPS.** When oncoming headlamps are sensed or when taillamps are detected in front of you, the available IntelliBeam® high beam assist intuitively adjusts between low and high beams.



**SAFETY ALERT DRIVER SEAT.** The available Safety Alert Driver Seat uses directional vibration pulses from the seat cushion instead of audible crash avoidance alerts to help indicate the direction of potential collision threats. This patented warning approach is tied into other onboard avoidance systems.



**THEFT PROTECTION PACKAGE.** Protect your investment with the available Theft Protection Package that includes glass breakage sensors, interior motion detectors and a revolutionary inclination sensor that measures any tilt of the vehicle.

PERFORMANCE

355

HORSEPOWER

383

LB.-FT. OF TORQUE

8,300

LBS. MAX TOWING<sup>1</sup>



Suburban Premier in Black with available features.

<sup>1</sup> Requires 2WD and available Max Trailering Package. Before you buy a vehicle or use it for trailering, carefully review the Trailering section of the Owner's Manual. The weight of passengers, cargo and options or accessories may reduce the amount you can tow. <sup>2</sup> Based on available 2017 model year competitive information and GM Large SUV segment. EPA-estimated MPG city/highway: Suburban 2WD 16/23, 4WD 15/22.

**LEGENDARY TOWING POWER.** With an available maximum towing capability of up to 8,300 lbs<sup>1</sup>, you can pull boats, trailers, ATVs or whatever else you want to bring along.

**MAGNETIC RIDE CONTROL.** Suburban Premier features Corvette-inspired Magnetic Ride Control,<sup>2</sup> a real-time damping system that delivers a smooth, precise ride by "reading" the road a thousand times per second and changing damping in just 10-15 milliseconds.

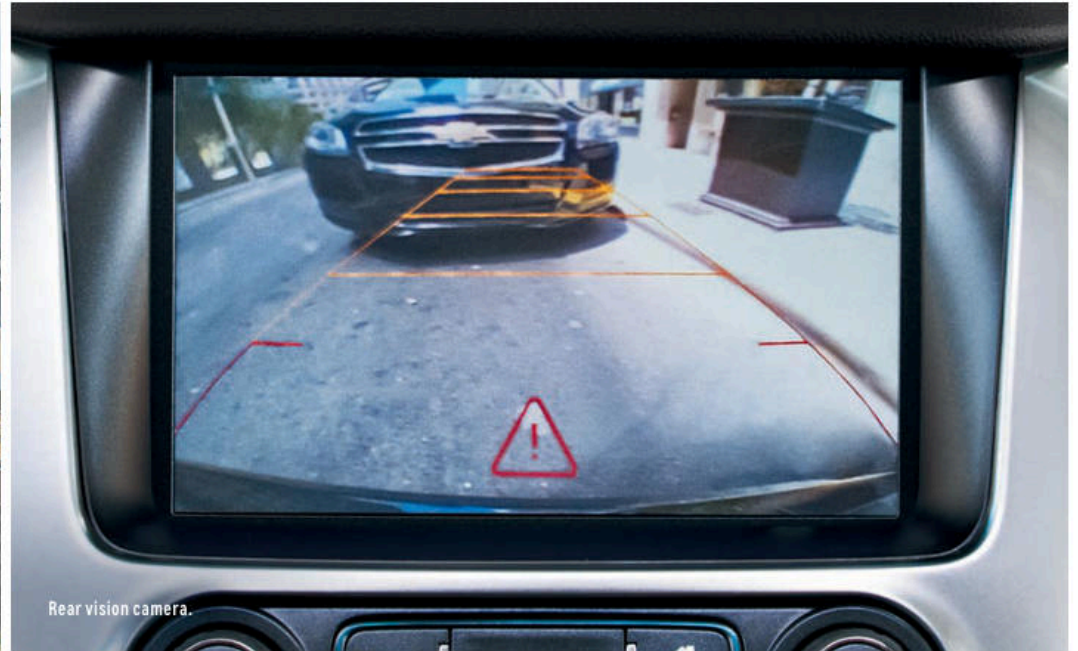
**POWERFUL EFFICIENCY.** A trio of innovative technologies drive the 5.3L EcoTec3 V8 engine. Direct Injection boosts power and fuel efficiency. Active Fuel Management<sup>™</sup> deactivates four cylinders when extra power is not needed.

Variable Valve Timing helps ensure Suburban performs at optimum power and efficiency. Bottom line? Expected best-in-class highway fuel economy<sup>2</sup> — an EPA-estimated 23 MPG.

## SPECIAL FEATURES



Z71 Midnight Edition grille and Black Chevrolet bowtie emblem.



Rear vision camera.



Available Bose® Centerpoint® Surround Sound premium 10-speaker audio system.



Power-folding third-row seat buttons and auxiliary 12-volt power outlet.

## WHEELS



22" Premium Painted-Aluminum  
with Chrome Inserts (SGF)  
(Available on LT and Premier)



18" Aluminum with  
High-Polished Finish (PZX)  
(Standard on LS and LT)



18" Painted-Aluminum (RCV)  
(Included with Z71  
Off-Road Package)



18" Black-Painted Aluminum (REG)  
(Included with Z71 Midnight Edition)



20" Polished-Aluminum (RD4)  
(Standard on Premier;  
available on LS and LT)



20" Chrome-Aluminum (RD2)  
(Available on Premier;  
included with LT Signature Package)



20" Black-Painted Aluminum (NZQ)  
(Included with LT Midnight Edition)



22" Chrome-Aluminum  
Multi-Featured Design (RPT)  
(Available on LT and Premier)



22" Chrome-Aluminum (SMI)  
(Available on LT and Premier)



22" Ultra Bright Machined-Aluminum  
with Bright Silver Finish (SIY)  
(Available on Premier)



22" Gloss Black Aluminum with  
Custom Silver Accents (SGK)  
(Included with RST Edition)

## COLORS



SUMMIT WHITE



IRIDESCENT PEARL TRICOAT<sup>1,2</sup>



SILVER ICE METALLIC



TUNGSTEN METALLIC



SATIN STEEL METALLIC



PEPPERDUST METALLIC



SIREN RED TINTCOAT<sup>1</sup>



BLUE VELVET METALLIC



BLACK



HAVANA METALLIC<sup>3</sup>

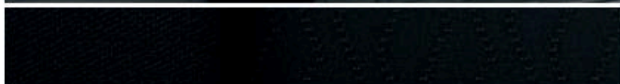
**FABRICS**



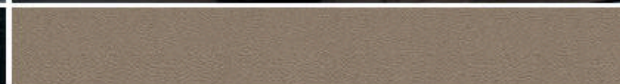
Cocoa/Mahogany Perforated Leather Appointments<sup>1,2</sup>



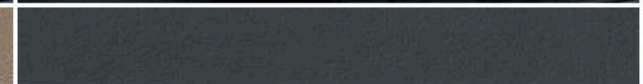
Cocoa/Dune Premium Cloth<sup>3</sup>



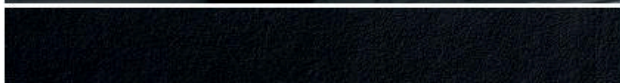
Jet Black Premium Cloth<sup>3</sup>



Cocoa/Dune Leather Appointments<sup>4</sup>



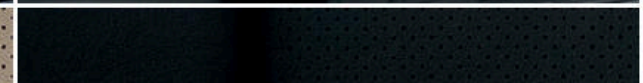
Jet Black/Dark Ash Leather Appointments<sup>4</sup>



Jet Black Leather Appointments<sup>4</sup>



Cocoa/Dune Perforated Leather Appointments<sup>5</sup>



Jet Black Perforated Leather Appointments<sup>5</sup>

<sup>1</sup> Available on Premier. Extra-cost color. <sup>2</sup> Not available with Pepperdust Metallic exterior color. <sup>3</sup> Standard on LS. <sup>4</sup> Standard on LT. <sup>5</sup> Standard on Premier.

## SELECT VEHICLE FEATURES

### SUBURBAN LS

5.3L EcoTec3 V8 engine with Active Fuel Management, Direct Injection and Variable Valve Timing

6-speed automatic transmission with Tow/Haul mode

Automatic locking rear differential

Autotrac single-speed active transfer case (4WD models)

Electric Power Steering

4-wheel antilock disc brakes with Duralife™ brake rotors

Frontal and side-impact air bags<sup>1</sup> for driver and front passenger, driver inboard seat-mounted side-impact Front Center Air Bag (requires front bucket seats) and head-curtain air bags for all rows in outboard seating positions

OnStar Guidance Plan<sup>2</sup> with limited service trial, including Automatic Crash Response, Stolen Vehicle Assistance, Roadside Assistance, Turn-by-Turn Navigation, Advanced Diagnostics and more (trial excludes Hands-Free Calling Minutes)

Teen Driver technology

Rear Seat Reminder<sup>3</sup>

Power-programmable door locks with lockout protection

LED daytime running lamps

Projector-beam headlamps

LED taillamps

Outside heated power-adjustable manual-folding body-color mirrors with driver spotter mirror

Active aero shutters behind front grille

Rear vision camera

Rear Park Assist

Intermittent front wipers with Rainsense®

Intermittent rear wiper with washer

Black assist steps

Capless fueling

18" aluminum wheels with high-polished finish

Chevrolet MyLink Radio<sup>4</sup> with 8-inch diagonal color touch-screen display, Bluetooth® audio streaming<sup>5</sup> and AM/FM/HD Radio<sup>6</sup> with CD player, includes 5 USB ports<sup>9</sup> and auxiliary input jack

SiriusXM Satellite Radio<sup>7</sup> All Access Package with 3-month trial subscription

Bluetooth wireless technology<sup>8</sup> for select phones

### SUBURBAN LS (CONTINUED)

Steering wheel-mounted audio and cruise controls and Driver Information Center (DIC) controls

Tri-zone automatic climate controls with individual climate settings for driver, right-front passenger and rear passengers

Electronic cruise control with Set and Resume Speed

Driver Information Center (DIC) with 4.2-inch diagonal multi-function color display

OnStar 4G LTE and built-in Wi-Fi® hotspot<sup>8</sup> for up to seven devices, includes data trial for 3 months or 3 GB (whichever comes first)

Interior lighting: Dome light, driver- and passenger-side door switch lighting with delayed entry feature, cargo lights, door handle- or Remote Keyless Entry-activated illuminated entry lighting, and map lights in first and second rows

11 charging locations including a 110-volt power outlet, 5 USB ports<sup>9</sup> and 5 auxiliary 12-volt power outlets

Remote Keyless Entry

Remote vehicle starter system

Leather-wrapped steering wheel

Floor console with storage area, cup holders and auxiliary input jack

Overhead console with conversation mirror

First- and second-row carpeted floor mats

Fold-flat second- and third-row seats

Underfloor storage with Cargo Management System in rear cargo area and cargo net

Electric rear-window defogger

Power windows with express-down, express-up for driver and front passenger

Trailer equipment: Trailing hitch platform, 7-wire harness with independent fused trailing circuits mated to a 7-way sealed connector and 2-inch trailing hitch receiver

### SUBURBAN LT In addition to or replacing LS features, LT includes:

Forward Collision Alert

Low Speed Forward Automatic Braking

Lane Keep Assist with Lane Departure Warning

Safety Alert Driver Seat

IntelliBeam high beam assist

Programmable power liftgate

Bose® premium 9-speaker audio system

### SUBURBAN LT (CONTINUED)

Leather-appointed front bucket seats with heated seat cushions and seatbacks

Power-adjustable pedals with memory

10-way power driver and passenger seats with 6-way power cushions, 2-way power lumbar control and power recline; driver-seat memory

Manual tilt and telescoping steering column

Inside rearview auto-dimming mirror

Universal Home Remote

### SUBURBAN PREMIER In addition to or replacing LT features, Premier includes:

Magnetic Ride Control suspension

Lane Change Alert with Side Blind Zone Alert

Rear Cross Traffic Alert

Front and Rear Park Assist

High-intensity discharge (HID) headlamps

Foglamps

Outside heated power-adjustable, power-folding mirrors with integrated turn signal indicators, ground illumination, driver-side auto-dimming feature and memory feature

Body-color bodyside moldings

Body-color trailer hitch closeout

20" polished-aluminum wheels

Hands-free programmable power liftgate

Chevrolet MyLink Radio<sup>4</sup> with Navigation and 8-inch diagonal color touch-screen display, Bluetooth audio streaming<sup>5</sup> AM/FM/HD Radio with CD player, and GPS navigation system, includes 5 USB ports<sup>9</sup> and auxiliary input jack

Bose Centerpoint® Surround Sound premium 10-speaker audio system

Keyless Open and Start

Power tilt and telescoping steering column

Heated steering wheel

Perforated leather-appointed seats

Heated and vented front bucket seats with 12-way power adjusters

Heated second-row bucket seats with power release

Power-folding 60/40 split-bench third-row seat

12 charging locations including a 110-volt power outlet, 5 USB ports<sup>9</sup>, 5 auxiliary 12-volt power outlets and a wireless charging pad<sup>9</sup>

**1 A NOTE ON CHILD SAFETY:** Always use safety belts and the correct child restraint for your child's age and size, even with air bags. Even in vehicles equipped with the Passenger Sensing System, children are safer when properly secured in a rear seat in the appropriate infant, child or booster seat. Never place a rear-facing infant restraint in the front seat of any vehicle equipped with an active frontal air bag. See the Owner's Manual and the child safety seat instructions for more safety information.

**2** Visit [onstar.com](http://onstar.com) for coverage map, details and system limitations. OnStar acts as a link to existing emergency service providers. **3** Does not detect people or items. Always check rear seat before exiting. **4** MyLink functionality varies by model. Full functionality requires compatible Bluetooth and smartphone, and USB connectivity for some devices. Map coverage available in the United States, Puerto Rico and Canada. **5** Visit [my.chevrolet.com/learn](http://my.chevrolet.com/learn) for vehicle and smartphone compatibility. **6** Not compatible with all devices. **7** If you decide to continue service after your trial, the subscription plan you choose will automatically renew thereafter and you will be charged according to your chosen payment method at then-current rates. Fees and taxes apply. To cancel you must call SiriusXM at 1-866-635-2349. See SiriusXM Customer Agreement for complete terms at [siriusxm.com](http://siriusxm.com). All fees and programming subject to change. For more information about NavTraffic, visit [siriusxm.com/navtraffic](http://siriusxm.com/navtraffic). For more information about Travel Link, visit [siriusxm.com/travelink](http://siriusxm.com/travelink). **8** Requires a compatible mobile device, active OnStar service and data plan. 4G LTE service available in select markets. Visit [onstar.com](http://onstar.com) for coverage map, details and system limitations. Data plans provided by AT&T. **9** The system wirelessly charges one PMA- or Qi-compatible mobile device. Some devices require an adaptor or back cover. To check for phone or other device compatibility, visit [my.chevrolet.com/learn](http://my.chevrolet.com/learn).

## SPECIFICATIONS

● STANDARD ○ AVAILABLE – NOT AVAILABLE

	LS	LT	PREMIER
<b>EXTERIOR</b>			
Assist steps: Power-retractable with chrome accent strip and perimeter lighting	-	-	○
<b>ENGINE/CHASSIS</b>			
Engine: 5.3L EcoTec3 V8 with Direct Injection, Variable Valve Timing and Active Fuel Management; 355 hp @ 5600 rpm, 383 lb.-ft. of torque @ 4100 rpm	●	●	●
Trailer brake controller: ABS-integrated <sup>1</sup>	○	○	○
Transfer case: Active, 2-speed, electronic Autotrac with rotary controls and Neutral position for dinghy towing (4WD models)	○	○	○
Transmission: 6-speed automatic, electronically controlled with overdrive and Tow/Haul mode	●	●	●
<b>INTERIOR</b>			
Adaptive Cruise Control with Forward Automatic Braking: Sophisticated radar transceiver automatically adjusts speed to maintain preset following distance	-	-	○ <sup>2</sup>
Enhanced Driver Information Center with 8-inch diagonal multi-color reconfigurable display and Head-Up Display with multi-function readouts	-	-	○
Sunroof: Power, tilt-sliding with express-open/-close and wind deflector	-	○	○
<b>SEATING</b>			
Front bucket seats: Premium Cloth; 10-way power driver seat with 6-way power cushion, 2-way power lumbar control and power recline; passenger seat includes power fore/aft, power recline and power lumbar control	●	-	-
3-passenger front 40/20/40 split-bench seat: Premium Cloth with 6-way power driver and 2-way right-front passenger seat adjusters; driver and right-front passenger power lumbar control and power recline; center fold-down armrest with storage (includes auxiliary power outlet, USB port <sup>3</sup> and input jack for audio system), storage compartments in seat cushion, adjustable outboard head restraints and storage pockets	○	-	-

	LS	LT	PREMIER
<b>SEATING (CONTINUED)</b>			
Second-row 60/40 split-bench seat, power-release	-	○ <sup>4</sup>	○
Second-row bucket seats, manual-release	-	○	-
Second-row bucket seats, power-release	-	○ <sup>4</sup>	●
<b>ENTERTAINMENT</b>			
6-speaker audio system	●	-	-
Bose premium 9-speaker audio system	-	●	-
Bose Centerpoint Surround Sound premium 10-speaker audio system	-	-	●
Chevrolet MyLink <sup>5</sup> Radio with Navigation: 8-inch diagonal color touch-screen display, Bluetooth audio streaming, <sup>6</sup> AM/FM/HD Radio with CD player, and GPS navigation system, includes 5 USB ports <sup>3</sup> and auxiliary input jack	-	○	●
Rear-Seat Blu-ray <sup>8</sup> Entertainment System: Blu-ray/DVD player with Wi-Fi <sup>7</sup> wireless projection capability and remote control, second- and third-row overhead displays, four 2-channel wireless digital headphones, auxiliary HDMI/MHL audio/video input and two USB ports <sup>3</sup>	-	○	○
OnStar Basic Plan <sup>9</sup> for five years includes select features of the myChevrolet Mobile App <sup>9</sup> including remote start, door lock or unlock, honk your horn and flash your lights, and send destinations to your Chevrolet MyLink <sup>5</sup> navigation screen (if equipped). Limited OnStar services include Advanced Diagnostics and Dealer Maintenance Notification	●	●	●
OnStar 4G LTE and built-in Wi-Fi hotspot <sup>10</sup> for up to seven devices, includes data trial for 3 months or 3 GB (whichever comes first)	●	●	●

	LS	LT	PREMIER
<b>PACKAGES</b>			
All-Season Package	○	-	-
20" polished-aluminum wheels, all-season blackwall tires, body-color bodyside moldings, Black roof rack cross rails, Max Trailing Package, all-weather floor mats and all-weather rear cargo mat	○	-	-
Enhanced Driver Alert Package	○	-	-
Power-adjustable pedals, Forward Collision Alert, IntelliBeam headlamps, Low Speed Forward Automatic Braking, Lane Keep Assist with Lane Departure Warning and Safety Alert Driver Seat	○	-	-
Max Trailing Package	○	○ <sup>11</sup>	○
3.42 rear axle ratio and integrated trailer brake controller; LS and LT models include rear air leveling suspension; 4WD models include Autotrac 2-speed active transfer case	○	○ <sup>11</sup>	○
LT Signature Package	-	○ <sup>4</sup>	-
20" chrome-aluminum wheels, all-season blackwall tires, bright bodyside moldings, chrome mesh grille, polished exhaust tip, chrome recovery hooks and chrome assist steps	-	○ <sup>4</sup>	-
Luxury Package	-	○	-
Keyless Open and Start, power-fold third-row bench seat, second-row power-release bench seat, heated second-row seats, memory for outside mirrors and steering column settings, power tilt and telescoping steering column, heated steering wheel, outside heated power-adjustable power-folding mirrors, hands-free programmable power liftgate, foglamps, Front and Rear Park Assist, Rear Cross Traffic Alert, Lane Change Alert with Side Blind Zone Alert, body-color trailer hitch closeout, and additional 9 months of SiriusXM Satellite Radio <sup>12</sup> All Access Package and NavTraffic <sup>12</sup> and Travel Link <sup>12</sup>	-	○	-

<sup>1</sup> Requires available Max Trailing Package. <sup>2</sup> Requires available enhanced Driver Information Center with 8-inch diagonal display. <sup>3</sup> Not compatible with all devices. <sup>4</sup> Requires available Luxury Package or Texas Edition Package. <sup>5</sup> MyLink functionality varies by model. Full functionality requires compatible Bluetooth and smartphone, and USB connectivity for some devices. Map coverage available in the United States, Puerto Rico and Canada. <sup>6</sup> Visit [my.chevrolet.com/learn](http://my.chevrolet.com/learn) for vehicle and smartphone compatibility. <sup>7</sup> Requires Wi-Fi connection and compatible device. <sup>8</sup> Does not include emergency or security services. Visit [onstar.com](http://onstar.com) for coverage map, details and system limitations. <sup>9</sup> Requires active OnStar service, compatible device, factory-installed remote start and power locks. Data rates apply. Visit [onstar.com](http://onstar.com) for details and system limitations. <sup>10</sup> Requires a compatible mobile device, active OnStar service and data plan. 4G LTE service available in select markets. Visit [onstar.com](http://onstar.com) for coverage map, details and system limitations. Data plans provided by AT&T. <sup>11</sup> Not available with Z71 Off-Road Package or Z71 Midnight Edition. <sup>12</sup> If you decide to continue service after your trial, the subscription plan you choose will automatically renew thereafter and you will be charged according to your chosen payment method at then-current rates. Fees and taxes apply. To cancel you must call SiriusXM at 1-866-635-2349. See SiriusXM Customer Agreement for complete terms at [siriusxm.com](http://siriusxm.com). All fees and programming subject to change. For more information about NavTraffic, visit [siriusxm.com/navtraffic](http://siriusxm.com/navtraffic). For more information about Travel Link, visit [siriusxm.com/travellink](http://siriusxm.com/travellink).

## SPECIFICATIONS (CONTINUED)

● STANDARD ○ AVAILABLE – NOT AVAILABLE

	LS	LT	PREMIER
<b>PACKAGES (CONTINUED)</b>			
<b>Z71 Off-Road Package</b>	–	○	–
Z71 Off-Road Suspension, 3.42 rear axle ratio, Autotrac 2-speed active transfer case, high-capacity air filter, Hill Descent Control, Front and Rear Park Assist, Black recovery hooks, foglamps, and Z71-specific features including unique grille design, skid plates, 18" wheels with all-terrain tires, Black tubular assist steps, front sill plates, rubber floor mats with Z71 logo, Z71 decal on instrument cluster, and Z71 badges on pillar and liftgate (4WD models)			
<b>LT Midnight Edition</b>	–	○	–
20" Black-painted aluminum wheels, all-season blackwall tires, Black bowtie emblems, Black exterior color and Jet Black leather-appointed interior			
<b>Z71 Midnight Edition</b>	–	○	–
Z71 Off-Road Package contents plus 18" Black-painted aluminum wheels with all-terrain tires, Black bowtie emblems, unique Z71 Midnight grille, Black exterior color and Jet Black leather-appointed interior			
<b>Texas Edition Package</b>	–	○	–
Texas Edition door badges, Keyless Open and Start, power-fold third-row bench seat, second-row power-release bench seat, heated second-row seats, memory for outside mirrors and steering column settings, power tilt and telescoping steering column, heated steering wheel, Black roof rack cross rails, outside heated power-adjustable power-folding mirrors, hands-free programmable power liftgate, foglamps, Front and Rear Park Assist, Rear Cross Traffic Alert, Lane Change Alert with Side Blind Zone Alert, body-color trailer hitch closeout, and additional 9 months of SiriusXM Satellite Radio <sup>1</sup> All Access Package and NavTraffic <sup>1</sup> and Travel Link <sup>1</sup>			
<b>RST Edition</b>	–	○ <sup>2</sup>	○ <sup>2</sup>
22" Gloss Black aluminum wheels with custom Silver accents, Black bowtie emblems, unique Gloss Black sport grille with body-color surround, body-color door handles and headlamp accents, and Black mirror caps, beltline moldings, roof rails and nameplate badging			
<b>Sun, Entertainment and Destinations Package</b>	–	○	○
Chevrolet MyLink <sup>3</sup> Radio with Navigation (LT models), power sunroof, Rear-Seat Blu-ray Entertainment System, and additional 9 months of SiriusXM Satellite Radio <sup>1</sup> All Access Package and NavTraffic <sup>1</sup> and Travel Link <sup>1</sup>			
<b>Theft Protection Package</b>	–	○ <sup>4</sup>	○
Self-powered horn, interior movement and vehicle inclination sensors, door and liftgate lock shields, and glass breakage sensors in rear quarter glass and liftgate window; removes sunglasses holder and conversation mirror from overhead console			

<sup>1</sup> If you decide to continue service after your trial, the subscription plan you choose will automatically renew thereafter and you will be charged according to your chosen payment method at then-current rates. Fees and taxes apply. To cancel you must call SiriusXM at 1-866-635-2349. See SiriusXM Customer Agreement for complete terms at [siriusxm.com](http://siriusxm.com). All fees and programming subject to change. For more information about NavTraffic, visit [siriusxm.com/navtraffic](http://siriusxm.com/navtraffic). For more information about Travel Link, visit [siriusxm.com/travelink](http://siriusxm.com/travelink). <sup>2</sup> Available with Silver Ice Metallic, Summit White, Black and Tungsten Metallic exterior colors. <sup>3</sup> MyLink functionality varies by model. Full functionality requires compatible Bluetooth and smartphone, and USB connectivity for some devices. Map coverage available in the United States, Puerto Rico and Canada. <sup>4</sup> Requires available Luxury Package or Texas Edition Package.



## COMPLETE CARE

Experience Chevrolet Complete Care, a comprehensive coverage, warranty and protection program that comes standard with every new 2018 Chevrolet Suburban lease and purchase. Simply, it is designed around you, to make it easy to keep your Chevrolet like new – and give you the confidence you deserve when you need it most.

### YOUR COMPREHENSIVE OWNER BENEFIT PROGRAM.

Includes two maintenance visits (oil and filter changes, tire rotations and multipoint vehicle inspections)<sup>1</sup>

5 years/60,000 miles of Roadside Assistance and Courtesy Transportation<sup>2</sup>

5-year/60,000-mile Powertrain Limited Warranty<sup>3</sup>

3-year/36,000-mile Bumper-to-Bumper Limited Warranty<sup>3</sup>

6 years/100,000 miles of Rust-Through Protection<sup>2</sup>

5 years of OnStar Basic Plan<sup>3</sup> including select features of the myChevrolet Mobile App<sup>4</sup>

Limited service trial of OnStar Guidance Plan<sup>5</sup>

## DIMENSIONS

Length	224.4"	Width	80.5"	Head Room (front/2nd row/3rd row)	42.8"/39.1"/38.5"
Wheelbase	130.0"	Front Track	68.8"	Head Room with Sunroof (front/2nd row/3rd row)	39.7"/39.1"/38.5"
Height	74.4"	Rear Track	68.7"	Leg Room (front/2nd row/3rd row)	45.3"/39.7"/34.5"
				Shoulder Room (front/2nd row/3rd row)	64.8"/65.1"/62.6"

## MAXIMUM CAPACITIES

### EPA-ESTIMATED FUEL ECONOMY

5.3L EcoTec3 V8 2WD	16 MPG city/23 highway/19 combined
5.3L EcoTec3 V8 4WD	15 MPG city/22 highway/18 combined

### FUEL TANK (APPROXIMATE)

31 gallons

### MAXIMUM TRAILER WEIGHT RATINGS<sup>6</sup>

2WD: 6,300 lbs.  
 2WD: 8,300 lbs. with Max Trailering Package  
 4WD: 6,000 lbs.  
 4WD: 8,000 lbs. with Max Trailering Package

### SEATING

LS: seats 8, option for 9  
 LT: seats 8, option for 7  
 Premier: seats 7, option for 8

### CARGO VOLUME<sup>7</sup> (CUBIC FEET)

Behind third-row seat: 39.3  
 With third-row seat folded: 76.7  
 With second- and third-row seats folded: 121.7

## OWNERSHIP EXTRAS



CHEVROLET.COM/WARRANTY



CHEVROLET.COM/ACCESSORIES



ONSTAR.COM



SIRIUSXM.COM

## NEW VEHICLE LIMITED WARRANTY

**5-YEAR/60,000-MILE TRANSFERABLE POWERTRAIN LIMITED WARRANTY** Every 2018 Chevrolet Suburban comes with a 5-year/60,000-mile (whichever comes first) transferable Powertrain Limited Warranty. 24/7 Roadside Assistance and Courtesy Transportation are also offered for the duration of the Powertrain Limited Warranty. Please see your Chevrolet dealer for details.

**3-YEAR/36,000-MILE BUMPER-TO-BUMPER LIMITED WARRANTY** Chevrolet will warrant each 2018 Suburban from bumper to bumper for 3 years/36,000 miles (whichever comes first; see dealer for details), with no deductible, from the original in-service date of the vehicle, for warrantable repairs that are required as a result of defects due to materials and/or workmanship. Cosmetic corrosion resulting from defects is also covered under the Bumper-to-Bumper Limited Warranty. In addition, rust-through corrosion will be covered for 6 years/100,000 miles (whichever comes first). See dealer for details.

<sup>1</sup> Maintenance visits must occur within two years or 24,000 miles of vehicle delivery, whichever comes first. Does not include air filters. See participating dealer for other restrictions and complete details. <sup>2</sup> Whichever comes first. See dealer for details. <sup>3</sup> Does not include emergency or security services. Visit [onstar.com](http://onstar.com) for coverage map, details and system limitations. <sup>4</sup> Requires active OnStar service, compatible device, factory-installed remote start and power locks. Data rates apply. Visit [onstar.com](http://onstar.com) for details and system limitations. <sup>5</sup> Visit [onstar.com](http://onstar.com) for coverage map, details and system limitations. <sup>6</sup> Before you buy a vehicle or use it for trailering, carefully review the Trailering section of the Owner's Manual. The weight of passengers, cargo and options or accessories may reduce the amount you can tow. <sup>7</sup> Cargo and load capacity limited by weight and distribution.

## IMPORTANT INFORMATION

**CHEVROLET OWNER CENTER (MY.CHEVROLET.COM)** Everything you need to know. Anything you need to do. Your Chevrolet Owner Center makes it easy. Create your account today to get the most out of your new vehicle. Get special alerts and offers, schedule service, review your maintenance schedule, and view how-to videos specifically for your vehicle. All online, anytime. Visit the Owner Center today to register or take a tour.

**ENGINES** Chevrolet products are equipped with engines produced by GM Global Propulsion Systems or other suppliers to GM worldwide. The engines in Chevrolet products may also be used in other GM makes and models.

**ASSEMBLY** Chevrolet vehicles and their components are assembled or produced by different operating units of General Motors, its subsidiaries or suppliers to GM worldwide. We sometimes find it necessary to produce Chevrolet vehicles with different or differently sourced components than originally scheduled. Since some options may be unavailable when your vehicle is assembled, we suggest you verify that your vehicle includes the equipment you ordered and that, if there were changes, they are acceptable to you.

**ONSTAR** OnStar services require vehicle electrical system (including battery), wireless service and GPS satellite signals to be available and operating for features to function properly. OnStar acts as a link to existing emergency service providers. Subscription Service Agreement required. Call 1.888.4ONSTAR (1-888-466-7827) or visit onstar.com for OnStar Terms and Conditions, Privacy Policy, details and system limitations.

**A NOTE ON CHILD SAFETY** Always use safety belts and the correct child restraint for your child's age and size, even with air bags. Even in vehicles equipped with the Passenger Sensing System, children are safer when properly secured in a rear seat in the appropriate infant, child or booster seat. Never place a rear-facing infant restraint in the front seat of any vehicle equipped with an active frontal air bag. See the Owner's Manual and the child safety seat instructions for more safety information.

**IMPORTANT WORDS ABOUT THIS CATALOG** We have tried to make this catalog comprehensive and factual. We reserve the right, however, to make changes at any time, without notice, in prices, colors, materials, equipment, specifications, models and availability. Specifications, dimensions, measurements, ratings and other numbers in this catalog and other

printed materials provided at the dealership or affixed to vehicles are approximations based on design and engineering drawings, prototypes and laboratory tests. Your vehicle may differ due to variations in manufacture and equipment. Since some information may have been updated since the time of printing, please check with your Chevrolet dealer for complete details. Chevrolet reserves the right to lengthen or shorten the model year for any product for any reason or to start and end model years at different times. Certain vehicle features may lose their usefulness over time due to obsolescence from technological changes. Unless otherwise noted, all claims based on GM Large SUV segment and latest available competitive information. Excludes other GM vehicles.

**FLEET ORDERS** Some standard content may be deleted on fleet orders. See dealer for details.

**CHEVROLET OWNERSHIP EXPERIENCE** Chevrolet is committed to enhancing the vehicle shopping and ownership experience through a wide array of programs. Visit chevrolet.com to build and price, find a vehicle, request a quote, compare vehicles, find financial tools or track your vehicle order. You'll also find information about 24-hour Roadside Assistance, Courtesy Transportation, Customer Assistance, GM Mobility, safety and current incentives.

**CHEVROLET.COM/SAFETY** Chevrolet is committed to keeping you and your family safe – from the start of your journey to your destination. That's why every Chevrolet is designed with a comprehensive list of safety and security features to help give you peace of mind.

**GMMOBILITY.COM (1-800-323-9935)** GM Mobility™ offers financial assistance for eligible adaptive equipment to make automotive travel easier for persons with disabilities or special transportation needs. To learn more about special GM Mobility offers, visit gmmobility.com.

**THE BUYPOWER CARD** The Chevrolet BuyPower Card – Every purchase you make with the BuyPower Card from Capital One\* helps you earn toward an eligible new Chevrolet, Buick, GMC or Cadillac vehicle. There's no limit on the amount you can earn or redeem, and your Earnings don't expire. Visit chevroletbuypowercard.com/catalogs.

\* Capital One, N.A. is the issuer of the BuyPower Card. General Motors ("GM") is responsible for the operation and administration of the Earnings program.



TWITTER.COM/CHEVROLET



YOUTUBE.COM/CHEVROLET



FACEBOOK.COM/CHEVROLET

GM, the GM logo, Chevrolet, the Chevrolet logo, and the slogans, emblems, vehicle model names, vehicle body designs and other marks appearing in this catalog are the trademarks and/or service marks of General Motors, its subsidiaries, affiliates or licensors. ©2017 OnStar. All rights reserved. Sirius, XM, SiriusXM and all related marks and logos are trademarks of Sirius XM Radio Inc. The Bluetooth word mark is a registered trademark owned by Bluetooth SIG, Inc., and any use of such mark by Chevrolet is under license. Bose and Centerpoint are registered trademarks of the Bose Corp. Blu-ray is a registered trademark of the Blu-ray Disc Association.

©2017 General Motors. All rights reserved. July 2017



**FIND NEW ROADS™**

**CHEVROLET.COM**