

SUBURBAN 2019

CHEVROLET



Suburban Premier in Satin Steel Metallic
with available Chevrolet Accessories.



***THE AMERICAN ICON
THAT HAS NO EQUAL.***

When adventures await, the legendary Chevrolet Suburban offers more of everything you expect – uncommon spaciousness, commanding performance and ingenious safety technology.

The luxury is all-encompassing. The capability is exceptional. Everything about Suburban makes it the ideal vehicle for the modern family that's always looking forward to where the next path will take them.

Discover why, year after year, Suburban is part of America's best-selling family of full-size SUVs.

FIND NEW ROADS™

RST EDITION



420

MAX HORSEPOWER¹

460

LB.-FT. MAX TORQUE¹

8,100

LBS. MAX TOWING^{1,2}

Suburban Premier in Summit White
with available RST Edition.

MAXIMUM SUBURBAN. With its seamless blend of style and performance, Suburban RST is ready for the city or wherever you want to take it.

RST 6.2L PERFORMANCE PACKAGE. For the ultimate in Suburban performance, this available package features a muscular 6.2L EcoTec3 V8 engine generating 420 horsepower and 460 lb.-ft. of torque. Plus, a state-of-the-art 10-speed Hydra-Matic[®] automatic transmission is designed to maximize engine power for responsiveness under acceleration.

MAGNETIC APPEAL. Performance-calibrated Magnetic Ride Control,[™] included in the available RST 6.2L Performance Package, is an adaptive suspension that “reads” the road every millisecond, delivering both improved body motion while cornering and exceptionally refined ride comfort while cruising.

¹ With available 6.2L EcoTec3 V8 engine. ² Requires 2WD. Before you buy a vehicle or use it for trailering, carefully review the Trailering section of the Owner's Manual. The weight of passengers, cargo and options or accessories may reduce the amount you can tow.



1. EXCLUSIVE 22-INCH WHEELS.

Suburban RST rolls on unique Gloss Black-painted aluminum wheels with custom Silver accents.

2. FIRST IMPRESSIONS COUNT. RST is instantly recognized by its body-color appearance with Black Chevrolet bowtie emblems and a unique Gloss Black sport grille with body-color surround.

3. FINISHING TOUCHES. A tuned low-restriction Borla[®] exhaust system is available as a dealer-installed accessory¹ on Suburban. Available Borla carbon-fiber performance exhaust tips are another custom detail that sets RST apart.

4. MASSIVE BREMBO BRAKES.

This available dealer-installed Chevrolet Accessory² brake system features front Red Brembo[®] 6-piston fixed aluminum calipers coupled with Duralife™ rotors that are larger than standard rotors. An 84% increase in brake pad area helps provide quieter braking and less vibration.

¹ Non-GM warranty. Limited warranty by Borla for 1,000,000 miles. For more information, contact your dealer. ² Most Chevrolet Parts and Accessories sold and installed on a Chevrolet vehicle by a Chevrolet dealer or a Chevrolet-approved Accessory Distributor/Installer (ADI) before delivery to the customer are covered under the applicable limited warranty. If Chevrolet Accessories are installed after vehicle delivery, or are replaced under the New Vehicle Limited Warranty, they will be covered, parts and labor, for the longer of the following: a) 12 months/12,000 miles (whichever comes first), or b) the balance of the applicable portion of the New Vehicle Limited Warranty. Chevrolet Parts sold over the counter, or those not requiring installation, will continue to receive the standard Chevrolet Dealer Parts Warranty of 12 months from the date of purchase, parts only, regardless of miles. Chevrolet warranties do not apply to Associated Accessories. See your dealer for details.

SPECIAL EDITIONS

PREMIER PLUS EDITION

6.2L ECOTEC3 V8 ENGINE AND 10-SPEED
AUTOMATIC TRANSMISSION

22-INCH 12-SPOKE ALUMINUM WHEELS WITH
POLISHED FINISH

POWER SUNROOF

POWER-RETRACTABLE ASSIST STEPS

BLACK ROOF RACK CROSS RAILS

POLISHED EXHAUST TIP

MAHOGANY PERFORATED LEATHER
APPOINTMENTS WITH JET BLACK ACCENTS

SECOND-ROW POWER-RELEASE
BUCKET SEATS

ENHANCED DRIVER INFORMATION CENTER

HEAD-UP DISPLAY

REAR-SEAT ENTERTAINMENT SYSTEM

CARGO AREA ORGANIZER



Suburban Premier in Black with
available Premier Plus Edition.

LT SIGNATURE PACKAGE

20-INCH CHROME-ALUMINUM WHEELS WITH
ALL-SEASON BLACKWALL TIRES

BRIGHT BODYSIDE MOLDINGS

CHROME MESH GRILLE

POLISHED EXHAUST TIP

CHROME RECOVERY HOOKS

CHROME ASSIST STEPS



Suburban LT in Shadow Gray Metallic
with available LT Signature Package.

INTERIOR DESIGN



Suburban Premier interior in Dune with perforated leather appointments, Cocoa accents and available features.

LIFE-SIZE LUXURY.

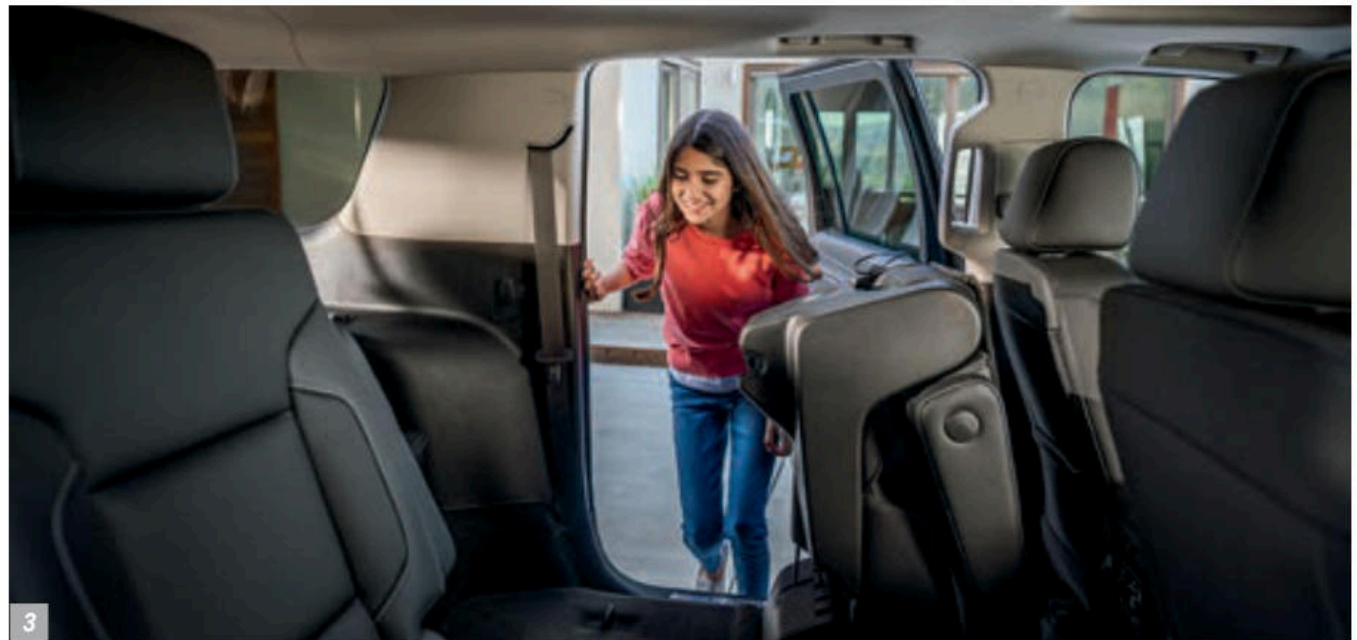
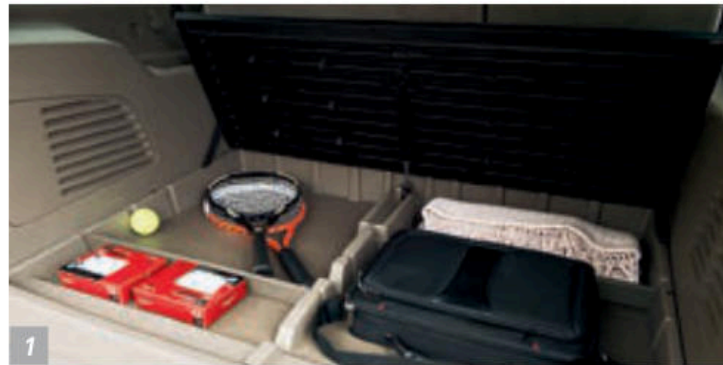
1. DUAL-LEVEL STORAGE.

The configurable underfloor Cargo Management System in the rear cargo area offers a convenient space to keep items hidden and organized.

2. A PLACE FOR EVERYTHING. The 8-inch diagonal color touch-screen slides up to reveal a password-protected area behind the display with space for cell phones, wallets or other valuables.

Additionally, a USB port¹ gives you one more place to charge your devices.

3. QUICK AND EASY ACCESS. Convenient power-release second-row bucket seats on Premier provide easy access to the spacious third row.



¹ Not compatible with all devices.



FAST FLAT-FOLDING SEATS.

Suburban has available power-release second-row and power-folding third-row seats that fold down fast. The conveniently placed buttons allow you to go from passenger space to cargo space in no time at all.

THE ROOM YOU NEED. With the second- and third-row seats folded, you'll have 121.7 cu. ft. of cargo space.¹ With all that room, it's no wonder Suburban has been a favorite of American families for decades.

VERSATILE AT EVERY TURN.

There's space available for up to eight passengers (nine in LS with the available split-bench front seat), with the option for second-row bench or bucket seats, and second and third rows that fold down, so Suburban is ready for anything your day might hold.

OPENING IS EFFORTLESS. Standard on Premier and available on LT, the hands-free programmable power liftgate ensures you'll worry less about the liftgate being out of your reach. A sensor under the rear bumper allows you to open the liftgate with a gentle kicking motion with the key fob in range.

¹ Cargo and load capacity limited by weight and distribution.

TECHNOLOGY



Suburban Premier interior
in Dune with Cocoa Accents
and available features.

Apple CarPlay® COMPATIBILITY:

With Apple CarPlay, you can simply and smartly connect with some of your most used iPhone® features, including Maps, Music, Messages and Phone, right on your touch-screen display.

MAINTAIN YOUR CONNECTIONS.

Chevrolet offers available built-in 4G LTE Wi-Fi®² hotspot that provides a better in-vehicle experience than your smartphone. Our strong signal means you have a fast and reliable connection for up to seven devices.

SIRIUSXM® RADIO³ Listen to over 150 channels of commercial-free music from every genre, live play-by-play sports, the biggest news and talk, and the hottest entertainment, 24/7, during the trial period. The available All Access Package lets you listen to all of it everywhere – in your vehicle, at home or in the office on your computer, or on your smartphone or tablet.

YOUR PERSONAL PROGRAM DIRECTOR.

The Chevrolet Infotainment System⁴ lets you program dozens of favorites, including radio stations, contacts, destinations (requires available Navigation⁵), music and other media.

¹ Vehicle user interface is a product of Apple and its terms and privacy statements apply. Requires compatible iPhone and data plan rates apply. ² Service varies with conditions and location. Requires active OnStar service and paid AT&T data plan. Visit onstar.com for details and limitations. ³ If you decide to continue service after your trial, the subscription plan you choose will automatically renew thereafter and you will be charged according to your chosen payment method at then-current rates. Fees and taxes apply. To cancel you must call SiriusXM at 1-866-635-2349. See SiriusXM Customer Agreement for complete terms at siriusxm.com. All fees and programming subject to change. ⁴ Chevrolet Infotainment System functionality varies by model. Full functionality requires compatible Bluetooth and smartphone, and USB connectivity for some devices. ⁵ Map coverage available in the United States, Puerto Rico and Canada.

Apple CarPlay and iPhone are trademarks of Apple Inc., registered in the U.S. and other countries.

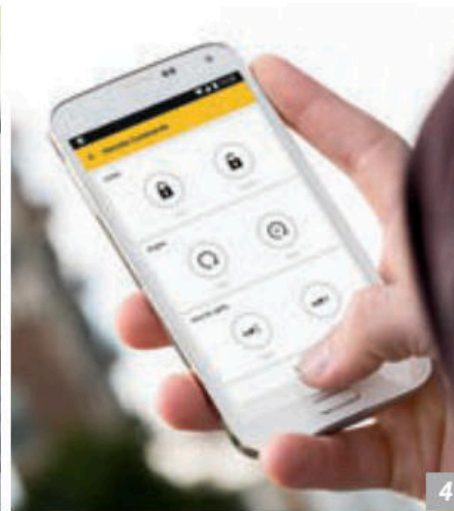


THAT'S ENTERTAINMENT. The available Rear-Seat Blu-ray® Entertainment System with two screens lets rear-seat passengers enjoy every drive with their favorite movies. With an HDMI connection and Wi-Fi,¹ it's possible to project to the screens from your mobile devices.

YOU'RE IN CHARGE. With as many as 14 charging locations, including an available wireless charging pad² and up to seven USB ports³ to connect phones, tablets and other portable devices, you'll always be able to stay in touch with your world.

MAKES GLOVES OPTIONAL. A heated steering wheel is standard on Premier and available on LT, offering warm comfort on a cold day.

¹ Requires Wi-Fi connection and compatible device. ² The system wirelessly charges one PMA- or Qi-compatible mobile device. Some devices require an adaptor or back cover. To check for phone or other device compatibility, visit my.chevrolet.com/learn for details. ³ Not compatible with all devices.



1. ANDROID AUTO COMPATIBILITY!

You can quickly and intuitively interact with select smartphone apps with support for Android Auto.¹ This system takes some of your compatible Android™ phone's features and lets you access them on the touch-screen display. You can access your phone, text messages, music, navigation and more.

2. AN EYE FOR INFORMATION.

The available color Head-Up Display projects information, such as speed and turn-by-turn navigation (if equipped), onto the windshield while you're driving so you can keep your eyes on the road. The Driver Information Center also provides critical data at a glance.

3. CUSTOMIZE YOUR DRIVE. Easily browse, choose and install select apps² that enhance your driving experience so it gets better every day. Using your vehicle's touch-screen, you can customize your content with music, audiobooks, weather and more.

4. myChevrolet Mobile App.³ Simply download the app to your compatible smartphone and if your vehicle is properly equipped, you can start or turn off your engine, lock or unlock your doors⁴ (requires paid subscription after trial), send destinations to your available navigation⁵ system, view key vehicle diagnostic information, set parking reminders and more. Requires available Remote Access Plan⁶

¹ Vehicle user interface is a product of Google and its terms and privacy statements apply. Requires the Android Auto app on Google Play and an Android compatible smartphone running Android 5.0 Lollipop or higher. Data plan rates apply. ² Visit chevrolet.com/connectivity for more details. ³ Available on select Apple and Android devices. Service availability, features and functionality vary by vehicle, device and the plan you are enrolled in. Device data connection required. ⁴ Requires paid subscription. Services are subject to User Terms and limitations. ⁵ Send-to-Navigation requires subscription. Service varies by vehicle model. Map coverage available in the United States, Puerto Rico and Canada. ⁶ Remote Access Plan does not include emergency or security services. Visit onstar.com for details and limitations.

Android, Android Auto, Google, Google Play and other marks are trademarks of Google LLC.

PERFORMANCE

355

HORSEPOWER

383

LB.-FT. OF TORQUE

8,300

LBS. MAX TOWING¹



Suburban Premier in Black with available features.

LEGENDARY TOWING POWER. With an available maximum towing capability of up to 8,300 lbs¹, you can pull boats, trailers, ATVs or whatever else you want to bring along.

MAGNETIC RIDE CONTROL. Suburban Premier features Corvette-inspired Magnetic Ride Control, a real-time damping system that delivers a smooth, precise ride by “reading” the road a thousand times per second and changing damping in just 10–15 milliseconds.

5.3L ECOTEC3 V8 ENGINE. A trio of innovative technologies drive the 5.3L EcoTec3 V8 engine. Direct Injection boosts power and fuel efficiency. Active Fuel Management™ deactivates four cylinders when extra power is not needed.

Variable Valve Timing helps ensure Suburban performs at optimum power and efficiency. Bottom line? EPA-estimated 15 MPG city and 22 MPG highway fuel economy²

¹ Requires 2WD, 5.3L EcoTec3 V8 engine and available Max Trailering Package. Before you buy a vehicle or use it for trailering, carefully review the Trailering section of the Owner's Manual. The weight of passengers, cargo and options or accessories may reduce the amount you can tow. ² With 5.3L EcoTec3 V8 engine. EPA-estimated MPG city/highway: 15/22 (2WD), 14/21 (4WD).

SUBURBAN PUTS SAFETY FIRST. THE SAME AS YOU DO.



ADAPTIVE CRUISE CONTROL – ADVANCED.

This available feature enhances cruise control by allowing the vehicle to automatically follow a detected vehicle at the driver-selected following gap while the driver steers, reducing the need to frequently brake and accelerate.



FORWARD AUTOMATIC BRAKING. Using the same radar sensors as Adaptive Cruise Control – Advanced, Forward Automatic Braking can help mitigate collisions or even prevent them at very low speeds. If the system detects an imminent front-end collision, it alerts you and can automatically apply the brakes if you have not already done so. Available on Premier.



LOW SPEED FORWARD AUTOMATIC BRAKING.

If the vehicle is traveling at a low speed and this available system detects that a front-end collision situation is imminent while following a detected vehicle and the driver has not already applied the brakes, it can automatically apply the brakes to help reduce the collision's severity. The system may even help avoid a collision at very low speeds.



FORWARD COLLISION ALERT.

This available feature monitors how close your vehicle is to the vehicle in front of you. If the system determines that a front-end collision with a detected vehicle is imminent, it can alert the driver to a potential crash. It also can warn the driver if their Suburban is following a detected vehicle much too closely.



LANE KEEP ASSIST WITH LANE DEPARTURE WARNING.

At speeds above 37 mph, this available camera-based system monitors road lines and can gently turn the steering wheel if the vehicle begins leaving the lane without the use of a turn signal.



LANE CHANGE ALERT WITH SIDE BLIND ZONE ALERT. This available feature uses radar sensors in the rear corners of the vehicle to help detect fast-approaching vehicles in the adjacent lanes as well as moving vehicles in the side mirror blind zones. Amber icons in the exterior mirrors indicate a vehicle's presence.



REAR CROSS TRAFFIC ALERT. Using the same radar sensors as Lane Change Alert with Side Blind Zone Alert, this available feature can alert you to crossing vehicles behind your Suburban when backing up. Visual alerts on the touch-screen display, as well as Safety Alert Seat pulses (if selected), are triggered if approaching vehicles are detected from either side.



REAR VISION CAMERA. When traveling in Reverse at low speeds, the standard rear vision camera helps provide a real-time view of the area immediately behind your Suburban on the touch-screen display. As you shift into Reverse, the rear vision camera automatically displays a live image of the area behind the vehicle on the 8-inch diagonal color touch-screen and includes guiding lines to help when backing up.



FRONT AND REAR PARK ASSIST. Ideal when parking at low speeds, this available system senses stationary objects and warns you if an object is too close.



TEEN DRIVER. This standard technology helps encourage better driving habits in a number of ways. It includes an in-vehicle report card that displays the frequency of select available safety tech feature (if equipped) activations. It mutes the audio system when front-seat occupants aren't wearing their seat belts, and gives audible and visual warnings when the vehicle is traveling over a predetermined speed.



INTELLIBEAM HEADLAMPS. When oncoming headlamps are sensed or when taillamps are detected in front of the vehicle, the available IntelliBeam® high beam assist intuitively adjusts between low and high beams.



SAFETY ALERT SEAT. This available seat uses directional vibration pulses from the seat cushion instead of audible crash avoidance alerts to help indicate the direction of potential collision threats. This patented warning approach is tied into other available onboard crash avoidance systems.



THEFT PROTECTION PACKAGE. Help protect your investment with the available Theft Protection Package that includes glass breakage sensors, interior motion detectors and a revolutionary inclination sensor that measures any tilt of the vehicle.

Z71 MIDNIGHT EDITION

Z71 OFF-ROAD PACKAGE CONTENT

18-INCH BLACK-PAINTED
ALUMINUM WHEELS

ALL-TERRAIN BLACKWALL TIRES

BLACK ROOF RACK CROSS RAILS

BLACK BOWTIE EMBLEMS

UNIQUE Z71 MIDNIGHT GRILLE

BLACK EXTERIOR COLOR

LEATHER-APPOINTED INTERIOR

AVAILABLE ON LT 4WD MODELS

**LT MIDNIGHT EDITION
(AS SHOWN)**

EXCLUSIVE 20-INCH BLACK-PAINTED
ALUMINUM WHEELS

ALL-SEASON BLACKWALL TIRES

BLACK ROOF RACK CROSS RAILS

BLACK BOWTIE EMBLEMS

BLACK EXTERIOR COLOR

LEATHER-APPOINTED INTERIOR



Suburban LT in Black with available
LT Midnight Edition.



Suburban LT in Blue Velvet Metallic
with available Z71 Off-Road Package.

Z71 OFF-ROAD PACKAGE

Z71 OFF-ROAD SUSPENSION AND 18-INCH WHEELS
WITH ALL-TERRAIN TIRES

Z71-SPECIFIC GRILLE AND SPECIAL
Z71 IDENTIFICATION

Z71-SPECIFIC SKID PLATES

BLACK TUBULAR ASSIST STEPS AND
RECOVERY HOOKS

3.42 REAR AXLE RATIO

AUTOTRAC® 2-SPEED ACTIVE TRANSFER CASE

HIGH-CAPACITY AIR FILTER

HILL DESCENT CONTROL

RUBBER FLOOR MATS WITH Z71 LOGOS

AVAILABLE ON LT 4WD MODELS

WHEELS



18" Aluminum with High-Polished Finish (PZX)
(Standard on LS and LT)



18" Painted-Aluminum (RCV)
(Included with Z71 Off-Road Package)



18" Black-Painted Aluminum (REG)
(Included with Z71 Midnight Edition)



20" Polished-Aluminum (RD4)
(Standard on Premier; available on LS and LT)



20" Chrome-Aluminum (RD2)
(Available on Premier; included with LT Signature Package)



20" Black-Painted Aluminum (NZQ)
(Included with LT Midnight Edition)



22" Chrome-Aluminum Multi-Featured Design (RPT)
(Available on LT and Premier)



22" Chrome-Aluminum (SMI)
(Available on LT and Premier)



22" Bright Machined-Aluminum
with Bright Silver Finish (SIY) (Available on Premier)



22" Gloss Black-Painted Aluminum with
Custom Silver Accents (SGK) (Included with RST Edition)



22" 12-Spoke Aluminum with Polished Finish (SH0)
(Included with Premier Plus Edition)



22" Premium Painted-Aluminum with Chrome Inserts (SGF)
(Available on LT and Premier)

COLORS



SUMMIT WHITE



IRIDESCENT PEARL TRICOAT²



SILVER ICE METALLIC



SHADOW GRAY METALLIC



SATIN STEEL METALLIC



PEPPERDUST METALLIC



SIREN RED TINTCOAT¹



DEEPWOOD GREEN METALLIC^{1,3}



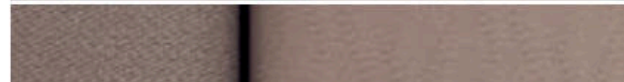
BLUE VELVET METALLIC



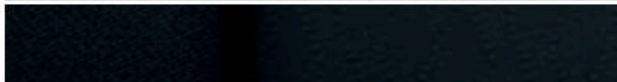
BLACK

¹ Extra-cost color. ² Not available on LS. ³ Limited availability.

FABRICS



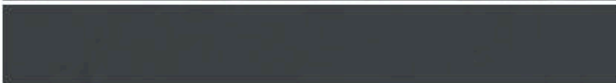
Dune Premium Cloth with Cocoa Accents¹



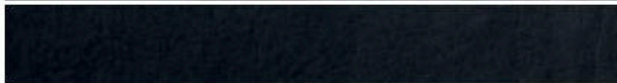
Jet Black Premium Cloth with Jet Black Accents¹



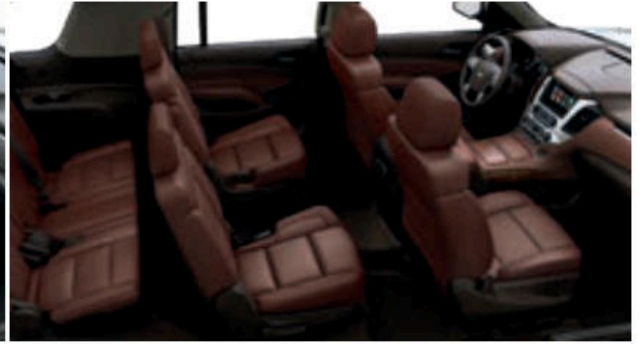
Dune Leather Appointments with Cocoa Accents²



Dark Ash Leather Appointments with Jet Black Accents²



Jet Black Leather Appointments with Jet Black Accents²



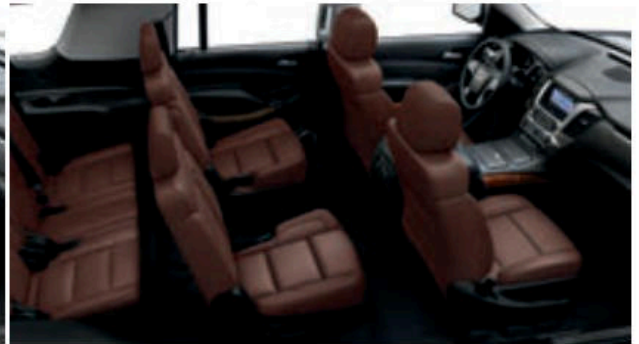
Mahogany Perforated Leather Appointments with Cocoa Accents^{3,4}



Dune Perforated Leather Appointments with Cocoa Accents⁵



Jet Black Perforated Leather Appointments with Jet Black Accents⁵



Mahogany Perforated Leather Appointments with Jet Black Accents⁶

¹ Standard on LS. ² Standard on LT. ³ Extra-cost color. ⁴ Available only on Premier. ⁵ Standard on Premier. ⁶ Requires available Premier Plus Edition.

SELECT VEHICLE FEATURES

SUBURBAN LS

5.3L EcoTec3 V8 engine with Active Fuel Management, Direct Injection and Variable Valve Timing

6-speed automatic transmission with Tow/Haul mode

Automatic locking rear differential

Single-speed active transfer case (4WD models)

Electric Power Steering

4-wheel antilock disc brakes with Duralife brake rotors

Airbags, frontal airbags¹ for driver and front outboard passenger; seat-mounted side-impact airbags for driver and front outboard passenger; driver inboard seat-mounted side-impact airbag (requires bucket seats); head-curtain airbags for all rows in outboard seating positions

OnStar Safety & Security Plan² with 1-month coverage, including Automatic Crash Response, Emergency Services, Stolen Vehicle Assistance, Roadside Assistance and Turn-by-Turn Navigation

Teen Driver technology

Rear Seat Reminder³

Power-programmable door locks with lockout protection

LED daytime running lamps

Projector-beam headlamps

LED taillamps

Outside heated power-adjustable manual-folding body-color mirrors

Active aero shutters behind front grille

Rear vision camera⁴

Rear Park Assist⁴

Intermittent front wipers with Rainsense[®]

Intermittent rear wiper with washer

Black assist steps

Capless fueling

18" aluminum wheels with high-polished finish

Chevrolet Infotainment System⁵ with 8-inch diagonal color touch-screen display, Bluetooth[®] audio streaming⁶ and AM/FM/HD Radio[®] with CD player and 6 speakers, includes 5 USB ports⁷ and auxiliary input jack

SiriusXM[®] Radio⁸ All Access Package with 3-month trial subscription

Bluetooth wireless technology⁶ for select phones

SUBURBAN LS (CONTINUED)

Tri-zone automatic climate controls with individual climate settings for driver, right-front passenger and rear passengers

Electronic cruise control with Set and Resume Speed

Driver Information Center (DIC) with 4.2-inch diagonal multi-function color display

Built-in 4G LTE Wi-Fi[®] for up to seven devices, includes data trial for 1 month or 3 GB (whichever comes first)

Interior lighting: Dome light, driver- and passenger-side door switch lighting with delayed entry feature, cargo lights, door handle- or Remote Keyless Entry-activated illuminated entry lighting, and map lights in first and second rows

11 charging locations including a 110-volt power outlet, 5 USB ports⁷ and 5 auxiliary 12-volt power outlets

Remote Keyless Entry

Remote vehicle starter system

Leather-wrapped steering wheel with mounted controls for audio, cruise and DIC

Floor console with storage area, cup holders and auxiliary input jack

Overhead console with conversation mirror

First- and second-row carpeted floor mats

Folding second- and third-row seats

Underfloor Cargo Management System in rear cargo area and cargo net

Electric rear-window defogger

Power windows with express-down, express-up for driver and front passenger

Trailer hitch platform, 7-wire harness with independent fused trailering circuits mated to a 7-way sealed connector and 2-inch trailering hitch receiver

SUBURBAN LT In addition to or replacing LS features, LT includes:

Forward Collision Alert⁴

Low Speed Forward Automatic Braking⁴

Lane Keep Assist with Lane Departure Warning⁴

Safety Alert Seat⁴

IntelliBeam high beam assist

Programmable power liftgate

Bose[®] premium 9-speaker audio system with RichBass™ woofer

SUBURBAN LT (CONTINUED)

Leather-appointed front bucket seats with heated seat cushions and seatbacks

Power-adjustable pedals with memory

10-way power driver and passenger seats with 6-way power cushions, 2-way power lumbar control and power recline; driver-seat memory

Manual tilt and telescoping steering column

Inside rearview auto-dimming mirror

Universal Home Remote

SUBURBAN PREMIER In addition to or replacing LT features, Premier includes:

Magnetic Ride Control suspension

Lane Change Alert with Side Blind Zone Alert⁴

Rear Cross Traffic Alert⁴

Front and Rear Park Assist⁴

Foglamps and high-intensity discharge (HID) headlamps

Outside heated power-adjustable, power-folding mirrors with integrated turn signal indicators, ground illumination, driver-side auto-dimming feature and memory feature

Body-color bodyside moldings and body-color trailer hitch closeout

20" polished-aluminum wheels

Hands-free programmable power liftgate

Chevrolet Infotainment System¹⁰ with Navigation and 8-inch diagonal color touch-screen display, Bluetooth audio streaming⁶ and AM/FM/HD Radio with CD player, and GPS navigation system, includes 5 USB ports⁷ and auxiliary input jack

Bose Centerpoint[®] Surround Sound premium 10-speaker audio system

Keyless Open and Start

Power tilt and telescoping steering column

Heated steering wheel

Perforated leather-appointed seats

Heated and vented front bucket seats with 12-way power adjusters

Heated second-row bucket seats with power release

Power-folding 60/40 split-bench third-row seat

12 charging locations including a 110-volt power outlet, 5 USB ports,⁷ 5 auxiliary 12-volt power outlets and a wireless charging pad¹¹

1 A NOTE ON CHILD SAFETY: Always use seat belts and the correct child restraint for your child's age and size, even with airbags. Even in vehicles equipped with the Passenger Sensing System, children are safer when properly secured in a rear seat in the appropriate infant, child or booster seat. Never place a rear-facing infant restraint in the front seat of any vehicle equipped with an active frontal airbag. See your vehicle Owner's Manual and the child safety seat instructions for more safety information. **2** Visit onstar.com for limitations and details. OnStar plan, working electrical system, cell service and GPS signal required. OnStar links to emergency services. Roadside service provided by Allstate Roadside Services. Stolen Vehicle Assistance requires armed factory-installed theft-deterrent system. **3** Does not detect people or items. Always check rear seat before exiting. **4** Read the vehicle Owner's Manual for important feature limitations and information. **5** Chevrolet Infotainment System functionality varies by model. Full functionality requires compatible Bluetooth and smartphone, and USB connectivity for some devices. **6** Visit my.chevrolet.com/learn for vehicle and smartphone compatibility. **7** Not compatible with all devices. **8** If you decide to continue service after your trial, the subscription plan you choose will automatically renew thereafter and you will be charged according to your chosen payment method at then-current rates. Fees and taxes apply. To cancel you must call SiriusXM at 1-866-635-2349. See SiriusXM Customer Agreement for complete terms at siriusxm.com. All fees and programming subject to change. For more information about Travel Link and NavTraffic, visit siriusxm.com/infotainment. **9** Service varies with conditions and location. Requires active OnStar service and paid AT&T data plan. Visit onstar.com for details and limitations. **10** Full functionality requires compatible Bluetooth and smartphone, and USB connectivity for some devices. Map coverage available in the United States, Puerto Rico and Canada. **11** The system wirelessly charges one PMA- or Qi-compatible mobile device. Some devices require an adaptor or back cover. To check for phone or other device compatibility, visit my.chevrolet.com/learn.

SPECIFICATIONS

● STANDARD ○ AVAILABLE – NOT AVAILABLE

	LS	LT	PREMIER
EXTERIOR			
Assist steps: Power-retractable with bright accent strip and perimeter lighting	-	-	○
ENGINE/CHASSIS			
Engine: 5.3L EcoTec3 V8 with Direct Injection, Variable Valve Timing and Active Fuel Management; 355 hp @ 5600 rpm, 383 lb.-ft. of torque @ 4100 rpm	●	●	●
6.2L EcoTec3 V8 with Direct Injection, Variable Valve Timing and Active Fuel Management; 420 hp @ 5600 rpm, 460 lb.-ft. of torque @ 4100 rpm	-	-	○ ¹
Trailer brake controller: ABS-integrated ²	○	○	○
Transfer case: Active, 2-speed, electronic with rotary controls and Neutral position for dinghy towing (4WD models)	○	○	○
Transmission: 6-speed automatic, electronically controlled with overdrive and Tow/Haul mode	●	●	●
Hydra-Matic 10-speed automatic, electronically controlled with overdrive and Tow/Haul mode	-	-	○

	LS	LT	PREMIER
INTERIOR			
Adaptive Cruise Control – Advanced ³ with Forward Automatic Braking ⁴	-	-	○ ⁴
Enhanced Driver Information Center with 8-inch diagonal multi-color reconfigurable display and Head-Up Display with multi-function readouts	-	-	○
SEATING			
Front bucket seats: Premium Cloth; 10-way power driver seat with 6-way power cushion, 2-way power lumbar control and power recline; passenger seat includes power fore/aft, power recline and power lumbar control	●	-	-
3-passenger front 40/20/40 split-bench seat: Premium Cloth with 6-way power driver and 2-way right-front passenger seat adjusters; driver and right-front passenger power lumbar control and power recline; center fold-down armrest with storage (includes 12-volt power outlet, USB port ⁵ and input jack for audio system), storage compartments in seat cushion, adjustable outboard head restraints and storage pockets	○	-	-
Second-row 60/40 split-bench seat, power-release	-	○ ⁶	○
Second-row bucket seats, manual-release	-	○	-
Second-row bucket seats, power-release	-	○ ⁶	●

	LS	LT	PREMIER
ENTERTAINMENT			
Bose [®] premium 9-speaker audio system with RichBass™ woofer	-	●	-
Bose Centerpoint [®] Surround Sound premium 10-speaker audio system	-	-	●
Chevrolet Infotainment System ⁷ with Navigation: 8-inch diagonal color touch-screen display, Bluetooth [®] audio streaming, ⁵ AM/FM/HD Radio with CD player, and GPS navigation system, includes 5 USB ports ⁵ and auxiliary input jack	-	○	●
Rear-Seat Blu-ray [®] Entertainment System: Blu-ray/DVD player with Wi-Fi ^{®8} wireless projection capability and remote control, second- and third-row overhead displays, four 2-channel wireless digital headphones, auxiliary HDMI/MHL audio/video input and two USB ports ⁵	-	○	○
Chevrolet Connected Access ¹⁰ for 10 years including Vehicle Diagnostics and Chevrolet Smart Driver	●	●	●
Built-in 4G LTE Wi-Fi ¹¹ for up to seven devices, includes data trial for 1 month or 3 GB (whichever comes first)	●	●	●

¹ Requires available RST Edition and 6.2L Performance Package or Premier Plus Edition. ² Requires available Max Trailering Package. ³ Read the vehicle Owner's Manual for important feature limitations and information. ⁴ Requires available enhanced Driver Information Center with 8-inch diagonal display. ⁵ Not compatible with all devices. ⁶ Requires available Luxury Package or Texas Edition Package. ⁷ Chevrolet Infotainment System functionality varies by model. Full functionality requires compatible Bluetooth and smartphone, and USB connectivity for some devices. Map coverage available in the United States, Puerto Rico and Canada. ⁸ Visit my.chevrolet.com/learn for vehicle and smartphone compatibility. ⁹ Requires Wi-Fi connection and compatible device. ¹⁰ Standard connectivity available only to original purchaser for 10 years. Connected Access services are subject to change. Does not include safety services. Visit onstar.com for details and plan limitations. ¹¹ Service varies with conditions and location. Requires active OnStar service and paid AT&T data plan. Visit onstar.com for details and limitations.

SPECIFICATIONS (CONTINUED)

● STANDARD ○ AVAILABLE – NOT AVAILABLE

	LS	LT	PREMIER
PACKAGES			
All-Season Package	○	–	–
20" polished-aluminum wheels, all-season blackwall tires, body-color bodyside moldings, Black roof rack cross rails, Max Trailering Package, all-weather floor mats and all-weather rear cargo mat			
Enhanced Driver Alert Package	○	–	–
Power-adjustable pedals, Forward Collision Alert ¹ ; IntelliBeam headlamps, Low Speed Forward Automatic Braking ¹ ; Lane Keep Assist with Lane Departure Warning ¹ and Safety Alert Seat ¹			
Max Trailering Package	○	○ ²	○
3.42 rear axle ratio and integrated trailer brake controller; LS and LT models include rear air leveling suspension; 4WD models include 2-speed active transfer case			
LT Signature Package	–	○ ³	–
20" chrome-aluminum wheels, all-season blackwall tires, bright bodyside moldings, chrome mesh grille, polished exhaust tip, chrome recovery hooks and chrome assist steps			
Luxury Package	–	○	–
Keyless Open and Start, power-folding third-row bench seat, second-row power-release bench seat, heated outboard second-row seats, memory for outside mirrors and steering column settings, power tilt and telescoping steering column, heated steering wheel, outside heated power-adjustable power-folding mirrors with integrated turn signal indicators, driver-side auto-dimming and ground illumination, hands-free programmable power liftgate, foglamps, Front and Rear Park Assist ¹ ; Rear Cross Traffic Alert ¹ ; Lane Change Alert ¹ with Side Blind Zone Alert ¹ ; body-color trailer hitch closeout, and additional 9 months of SiriusXM [®] Radio ⁴ All Access Package and NavTraffic ⁴ and Travel Link ⁴			

	LS	LT	PREMIER
PACKAGES (CONTINUED)			
Z71 Off-Road Package	–	○	–
Z71 Off-Road Suspension, 3.42 rear axle ratio, 2-speed active transfer case, high-capacity air filter, Hill Descent Control, Front and Rear Park Assist ¹ ; Black recovery hooks, foglamps, and Z71-specific features including unique grille design, skid plates, 18" wheels with all-terrain tires, Black tubular assist steps, front sill plates, rubber floor mats with Z71 logo, Z71 decal on instrument cluster, and Z71 badges on pillar and liftgate (4WD models)			
LT Midnight Edition	–	○	–
20" Black-painted aluminum wheels, all-season blackwall tires, Black bowtie emblems, Black roof rack cross rails and Black exterior color			
Z71 Midnight Edition	–	○	–
Z71 Off-Road Package content plus 18" Black-painted aluminum wheels with all-terrain tires, Black bowtie emblems, unique Z71 Midnight grille and Black exterior color (4WD models)			
Texas Edition Package	–	○	–
Luxury Package content plus Black roof rack cross rails and Texas Edition door badges			
RST Edition	–	○ ⁵	○ ⁵
22" Gloss Black-painted aluminum wheels with custom Silver accents, Black bowtie emblems, unique Gloss Black sport grille with body-color surround, body-color door handles and headlamp accents, and Black mirror caps, beltline moldings, roof rails and nameplate badging			

	LS	LT	PREMIER
PACKAGES (CONTINUED)			
RST 6.2L Performance Package	–	–	○ ⁶
6.2L EcoTec3 V8 engine, performance-calibrated Magnetic Ride Control suspension, Hydra-Matic 10-speed automatic transmission, 170-amp alternator, Active Noise Cancellation, high-capacity air filter, 3.23 rear axle ratio, Autotrac 2-speed active transfer case (4WD models) and trailer brake controller			
Sun, Entertainment and Destinations Package	–	○	○
Chevrolet Infotainment System ⁷ with Navigation (LT models), power sunroof, Rear-Seat Blu-ray [®] Entertainment System, and additional 9 months of SiriusXM Radio ⁴ All Access Package and NavTraffic ⁴ and Travel Link ⁴			
Theft Protection Package	–	○ ³	○
Self-powered horn, interior movement and vehicle inclination sensors, door and liftgate lock shields, and glass breakage sensors in rear quarter glass and liftgate window; removes sunglasses holder and conversation mirror from overhead console			
Premier Plus Edition	–	–	○
6.2L EcoTec3 V8 engine, 10-speed automatic transmission, 22" 12-spoke aluminum wheels with polished finish, 170-amp alternator, Active Noise Cancellation, high-capacity air filter, 3.23 rear axle ratio, Autotrac 2-speed active transfer case (4WD models), trailer brake controller, power sunroof, power-retractable assist steps, Black roof rack cross rails, polished exhaust tip, Mahogany perforated leather appointments with Jet Black accents, second-row power-release bucket seats, enhanced Driver Information Center, Head-Up Display, Rear-Seat Entertainment System, Chevrolet-branded cargo area organizer and 12 months of 4G LTE Wi-Fi ⁸			

¹ Read the vehicle Owner's Manual for important feature limitations and information. ² Not available with Z71 Off-Road Package or Z71 Midnight Edition. ³ Requires available Luxury Package or Texas Edition Package. ⁴ If you decide to continue service after your trial, the subscription plan you choose will automatically renew thereafter and you will be charged according to your chosen payment method at then-current rates. Fees and taxes apply. To cancel you must call SiriusXM at 1-866-635-2349. See SiriusXM Customer Agreement for complete terms at siriusxm.com. All fees and programming subject to change. For more information about Travel Link and NavTraffic, visit siriusxm.com/infotainment. ⁵ Available only with the following exterior colors: Silver Ice Metallic, Summit White, Black or Shadow Gray Metallic. ⁶ Requires available RST Edition. ⁷ Chevrolet Infotainment System functionality varies by model. Full functionality requires compatible Bluetooth and smartphone, and USB connectivity for some devices. Map coverage available in the United States, Puerto Rico and Canada. ⁸ Service varies with conditions and location. Requires active OnStar service and paid AT&T data plan. Visit onstar.com for details and limitations.



COMPLETE CARE

Experience Chevrolet Complete Care, a comprehensive coverage, warranty and protection program that comes standard with every new 2019 Chevrolet Suburban lease and purchase. Simply, it is designed around you, to make it easy to keep your Chevrolet like new – and give you the confidence you deserve when you need it most.

YOUR COMPREHENSIVE OWNER BENEFIT PROGRAM.

Includes one maintenance visit (oil change, tire rotation and multi-point vehicle inspection) ¹
5 years/60,000 miles of Roadside Assistance and Courtesy Transportation ²
3-year/36,000-mile Bumper-to-Bumper Limited Warranty ³
5-year/60,000-mile Powertrain Limited Warranty ³
6 years/100,000 miles of Rust-Through Protection ³
10 years of standard connectivity with Chevrolet Connected Access ³
1-month trial of Chevrolet Connected Services ⁴ and 1 month of OnStar Safety & Security Plan coverage ⁴

DIMENSIONS

Length	224.4"	Width	80.5"	Head Room (front/2nd row/3rd row)	42.8"/39.1"/38.5"
Wheelbase	130.0"	Front Track	68.8"	Head Room with Sunroof (front/2nd row/3rd row)	39.7"/39.1"/38.5"
Height	74.4"	Rear Track	68.7"	Leg Room (front/2nd row/3rd row)	45.3"/39.7"/34.5"
				Shoulder Room (front/2nd row/3rd row)	64.8"/65.1"/62.6"

MAXIMUM CAPACITIES

EPA-ESTIMATED FUEL ECONOMY		FUEL TANK (APPROXIMATE)	SEATING
5.3L EcoTec3 V8 2WD	15 MPG city/22 highway/18 combined	31 gallons	LS: seats 8, option for 9
5.3L EcoTec3 V8 4WD	14 MPG city/21 highway/16 combined	MAXIMUM TRAILER WEIGHT RATINGS⁵	LT: seats 8, option for 7
6.2L EcoTec3 V8 2WD	14 MPG city/23 highway/17 combined	5.3L 2WD: 6,300 lbs.	Premier: seats 7, option for 8
6.2L EcoTec3 V8 4WD	14 MPG city/20 highway/16 combined	5.3L 2WD: 8,300 lbs. with Max Trailering Package	CARGO VOLUME⁶ (CUBIC FEET)
		5.3L 4WD: 6,000 lbs.	Behind third-row seat: 39.3
		5.3L 4WD: 8,000 lbs. with Max Trailering Package	With third-row seat folded: 76.7
		6.2L 2WD: 8,100 lbs.	With second- and third-row seats folded: 121.7
		6.2L 4WD: 7,900 lbs.	

OWNERSHIP EXTRAS

CHEVROLET



CHEVROLET.COM/WARRANTY

CHEVROLET



CHEVROLET.COM/ACCESSORIES



ONSTAR.COM

SIRIUSXM

SIRIUSXM.COM

NEW VEHICLE LIMITED WARRANTY

3-YEAR/36,000-MILE BUMPER-TO-BUMPER LIMITED WARRANTY Chevrolet will warrant each 2019 Suburban from bumper to bumper for 3 years/36,000 miles (whichever comes first; see dealer for details), with no deductible, from the original in-service date of the vehicle, for warrantable repairs that are required as a result of defects due to materials and/or workmanship. Cosmetic corrosion resulting from defects is also covered under the Bumper-to-Bumper Limited Warranty. In addition, rust-through corrosion will be covered for 6 years/100,000 miles (whichever comes first). See dealer for details.

5-YEAR/60,000-MILE TRANSFERABLE POWERTRAIN LIMITED WARRANTY Every 2019 Suburban comes with a 5-year/60,000-mile (whichever comes first) transferable Powertrain Limited Warranty. 24/7 Roadside Assistance and Courtesy Transportation are also offered for the duration of the Powertrain Limited Warranty. Please see your Chevrolet dealer for details.

¹ Maintenance visit must occur within first year of vehicle delivery. Service visit consists of ACDelco dexos1™ Full Synthetic Oil and Filter Change/Tire Rotation/MPVI. Does not include air filters. See participating dealer for other restrictions and complete details. ² Whichever comes first. See dealer for details. ³ Standard connectivity available only to original purchaser for 10 years. Connected Access services are subject to change. Does not include safety services. Visit onstar.com for details and plan limitations. ⁴ Connected Services include navigation services and Remote Access Plan, and 1 month/3 GB of 4G LTE data (whichever comes first) from vehicle delivery date. Services are subject to User Terms and limitations. Certain services require working electrical system, cell service and GPS signals. OnStar links to emergency services. Visit onstar.com for more details. ⁵ Before you buy a vehicle or use it for trailering, carefully review the Trailering section of the Owner's Manual. The weight of passengers, cargo and options or accessories may reduce the amount you can tow. ⁶ Cargo and load capacity limited by weight and distribution.

IMPORTANT INFORMATION

CHEVROLET CONNECTED SERVICES AND ONSTAR Effective May 1, 2018, available Chevrolet Connected Services have changed significantly. While many of the offered services are the same, available plans and pricing are different. Connected vehicle services require a paid connected vehicle services plan or trial and connected hardware, vehicle electrical system (including battery), wireless service and GPS satellite signals to be available and operating for features to function properly. OnStar acts as a link to existing emergency service providers. Visit onstar.com for coverage map, details and system limitations.

CHEVROLET OWNER CENTER (MY.CHEVROLET.COM) Everything you need to know. Anything you need to do. Your Chevrolet Owner Center makes it easy. Create your account today to get the most out of your new vehicle. Get special alerts and offers, schedule service, review your maintenance schedule, and view how-to videos specifically for your vehicle. All online, anytime. Visit the Owner Center today to register or take a tour.

ENGINES Chevrolet products are equipped with engines produced by GM Global Propulsion Systems or other suppliers to GM worldwide. The engines in Chevrolet products may also be used in other GM makes and models.

ASSEMBLY Chevrolet vehicles and their components are assembled or produced by different operating units of General Motors, its subsidiaries or suppliers to GM worldwide. We sometimes find it necessary to produce Chevrolet vehicles with different or differently sourced components than originally scheduled. Since some options may be unavailable when your vehicle is assembled, we suggest you verify that your vehicle includes the equipment you ordered and that, if there were changes, they are acceptable to you.

A NOTE ON CHILD SAFETY Always use seat belts and the correct child restraint for your child's age and size, even with airbags. Even in vehicles equipped with the Passenger Sensing System, children are safer when properly secured in a rear seat in the appropriate infant, child or booster seat. Never place a rear-facing infant restraint in the front seat of any vehicle equipped with an active frontal airbag. See your vehicle Owner's Manual and the child safety seat instructions for more safety information.

IMPORTANT WORDS ABOUT THIS CATALOG We have tried to make this catalog comprehensive and factual. We reserve the right, however, to make changes at any time, without notice, in prices, colors, materials, equipment,

specifications, models and availability. Specifications, dimensions, measurements, ratings and other numbers in this catalog and other printed materials provided at the dealership or affixed to vehicles are approximations based on design and engineering drawings, prototypes and laboratory tests. Your vehicle may differ due to variations in manufacture and equipment. Since some information may have been updated since the time of printing, please check with your Chevrolet dealer for complete details. Chevrolet reserves the right to lengthen or shorten the model year for any product for any reason or to start and end model years at different times. Certain vehicle features may lose their usefulness over time due to obsolescence from technological changes. Unless otherwise noted, all claims based on GM Large SUV segment and latest available competitive information. Excludes other GM vehicles.

FLEET ORDERS Some standard content may be deleted on fleet orders. See dealer for details.

CHEVROLET OWNERSHIP EXPERIENCE Chevrolet is committed to enhancing the vehicle shopping and ownership experience through a wide array of programs. Visit chevrolet.com to build and price, find a vehicle, request a quote, compare vehicles, find financial tools or track your vehicle order. You'll also find information about 24-hour Roadside Assistance, Courtesy Transportation, Customer Assistance, GM Mobility, safety and current incentives.

CHEVROLET.COM/SAFETY Chevrolet is committed to keeping you and your family safe – from the start of your journey to your destination. That's why every Chevrolet is designed with a comprehensive list of safety and security features to help give you peace of mind.

GMMOBILITY.COM (1-800-323-9935) GM Mobility™ offers financial assistance for eligible adaptive equipment to make automotive travel easier for persons with disabilities or special transportation needs. To learn more about special GM Mobility offers, visit gmmobility.com.

THE BUYPOWER CARD The Chevrolet BuyPower Card – Every purchase you make with the BuyPower Card from Capital One* helps you earn toward an eligible new Chevrolet, Buick, GMC or Cadillac vehicle. There's no limit on the amount you can earn or redeem, and your Earnings don't expire. Visit chevroletbuypowercard.com/catalogs.

* Capital One, N.A. is the issuer of the BuyPower Card. General Motors ("GM") is responsible for the operation and administration of the Earnings program.



[TWITTER.COM/CHEVROLET](https://twitter.com/CHEVROLET)



[YOUTUBE.COM/CHEVROLET](https://youtube.com/CHEVROLET)



[FACEBOOK.COM/CHEVROLET](https://facebook.com/CHEVROLET)



[INSTAGRAM.COM/CHEVROLET](https://instagram.com/CHEVROLET)

GM, the GM logo, Chevrolet, the Chevrolet logo, and the slogans, emblems, vehicle model names, vehicle body designs and other marks appearing in this catalog are the trademarks and/or service marks of General Motors, its subsidiaries, affiliates or licensors. ©2018 OnStar LLC. All rights reserved. Sirius, XM, SiriusXM and all related marks and logos are trademarks of Sirius XM Radio Inc. The Bluetooth word mark is a registered trademark owned by Bluetooth SIG, Inc., and any use of such mark by Chevrolet is under license. Bose and Centerpoint are registered trademarks and RichBass is a trademark of the Bose Corp. Blu-ray is a registered trademark of the Blu-ray Disc Association. Brembo is a registered trademark of Brembo S.p.A. ©2018 General Motors. All rights reserved. August 2018



FIND NEW ROADS™

CHEVROLET.COM