

TAHOE 2017

CHEVROLET



Tahoe Premier in Siren Red
Tintcoat (extra-cost color)
with available features.



When getting from here to there is likely to take you anywhere.

FIND NEW ROADS™

Tahoe Premier in Siren Red Tintcoat (extra-cost color) with available features.



LEAD THE WAY.

You can accomplish anything in the 2017 Tahoe. The incredible capability of the 5.3L EcoTec3 V8 engine blends seamlessly with the exceptional refinement of its finely crafted interior. Innovative technology complements available advanced safety features to help you stay both connected and protected.

With uncompromising versatility and a track record that stretches for miles, it's no wonder the 2016 Tahoe was named the "Highest Ranked Large SUV in Initial Quality" by J.D. Power! Or that, year after year, Tahoe is America's best-selling full-size SUV.

¹The Chevrolet Tahoe received the lowest number of problems per 100 vehicles among large SUVs in the J.D. Power 2016 Initial Quality Study, based on 80,157 total responses, evaluating 245 models, and measures the opinions of new 2016 vehicle owners after 90 days of ownership, surveyed in February–May 2016. Your experiences may vary. Visit jdpower.com.

EXTERIOR DESIGN



Tahoe LT in Black with available Z71 Midnight Edition (late availability).

THE LEGEND OF Z71. With its rugged suspension, two-speed active transfer case, high-capacity air cleaner, 3.42 rear axle ratio, skid plates and Hill Descent Control, the available Z71 Off-Road Package can take you as far as you want to go. Add in Black recovery hooks,

foglamps, 18-inch wheels with all-terrain tires, tubular assist steps, front sill plates and rubber floor mats with the Z71 logo and you're not just ready to take on the off-road, you're ready to tame any road at all.

DON'T BE AFRAID OF THE DARK.

The available Z71 Midnight Edition turns Tahoe to the dark side with 18-inch Black-painted wheels, Goodyear DuraTrac tires, a Black mesh grille, Black roof rack cross rails, and front and rear Black Chevrolet bowtie emblems (late availability).



1. MIDNIGHT MEETS TAHOE LT.

The available LT Midnight Edition lets the world know you've arrived (late availability).

2. WELCOME ABOARD. Black tubular assist steps add a striking finishing touch to the exterior of Tahoe with the available Z71 Off-Road Package.

3. A BOLD FIRST IMPRESSION. With a Black mesh grille, a Black Chevrolet bowtie emblem and a trail-ready skid plate, there's no mistaking the opening statement made by the available Z71 Midnight Edition.



WANT MORE INFO?
GO TO CHEVY.COM/TAHOE

INTERIOR DESIGN



Tahoe Premier interior in Cocoa/Mahogany (extra-cost color) with perforated leather appointments and available features.

1. POWER-FOLDING THIRD-ROW SEATS.

The conveniently placed buttons allow Tahoe with power-release second-row seats and power-folding third-row seats to go from passenger space to cargo space in no time. Standard on Premier and available on LT.

2. EVERYTHING CLOSE AT HAND.

Important items are never out of reach with door storage for water bottles, umbrellas, maps and more.

3. HIDE WHAT OTHERS SEEK. The 8-inch diagonal color touch-screen slides up to reveal a password-protected area behind the display with space for cell phones, wallets or other valuables. Additionally, a USB port¹ gives you one more place to charge your devices.

4. IN THE MIDDLE OF IT ALL.

The cavernous front floor console provides enough room for a laptop or other large items.



¹ Not compatible with all devices.



ALL THE ROOM YOU NEED. With the second- and third-row seats folded flat, you'll have 94.7 cu. ft. of cargo space! That's more than enough room for everyday use or a week-long road trip.

VERSATILE AT EVERY TURN. There's space available for up to nine passengers, plus the option for second-row bench or bucket seats, and second and third rows that fold flat, so Tahoe can handle whatever twists and turns come your way.

OPENING IS EFFORTLESS. Standard on Premier and available on LT, the hands-free programmable power liftgate ensures you'll worry less about the liftgate being out of your reach. A sensor under the rear bumper allows you to open the liftgate with a gentle kicking motion.

¹ Cargo and load capacity limited by weight and distribution.

Tahoe Premier in Siren Red Tintcoat (extra-cost color) with available features.

TECHNOLOGY



Tahoe Premier interior in Cocoa/Dune with available features.

¹ Vehicle user interface is a product of Apple and its terms and privacy statements apply. Requires compatible iPhone and data plan rates apply. ² Requires a compatible mobile device, active OnStar service and data plan. 4G LTE service available in select markets. Visit onstar.com for coverage map, details and system limitations. Data plans provided by AT&T. ³ If you decide to continue service after your trial, the subscription plan you choose will automatically renew thereafter and you will be charged according to your chosen payment method at then-current rates. Fees and taxes apply. To cancel you must call SiriusXM at 1-866-635-2349. See SiriusXM Customer Agreement for complete terms at siriusxm.com. All fees and programming subject to change. ⁴ MyLink functionality varies by model. Full functionality requires compatible Bluetooth and smartphone, and USB connectivity for some devices. Map coverage available in the United States, Puerto Rico and Canada.

Apple CarPlay is a trademark of Apple Inc. iPhone is a trademark of Apple Inc., registered in the U.S. and other countries.

AVAILABLE Apple CarPlay™

COMPATIBILITY.¹ Take some of your most used compatible iPhone® features and put them on your vehicle's touch-screen display in a smart, simple manner.

Access your Phone, Music, Maps and Messages, as well as some of your other favorite apps.


MAINTAIN YOUR CONNECTIONS.

Chevrolet is the first and only car company to offer built-in 4G LTE Wi-Fi² to cars, trucks and crossovers, providing the ability to seamlessly connect your smart devices and vehicles to the Internet. It offers great signal quality and bandwidth for up to seven devices.

SIRIUSXM SATELLITE RADIO.³ Listen to over 150 channels of commercial-free music from every genre, live play-by-play sports, the biggest news and talk, and the hottest entertainment, 24/7, during the trial period. The available All Access Package lets you listen to all of it everywhere – in your vehicle, at home or in the office on your computer, or on your smartphone or tablet.

YOUR PERSONAL PROGRAM DIRECTOR.

Chevrolet MyLink⁴ lets you program dozens of favorites, including radio stations, contacts, destinations (requires available Chevrolet MyLink Radio with Navigation⁴), music and other media.

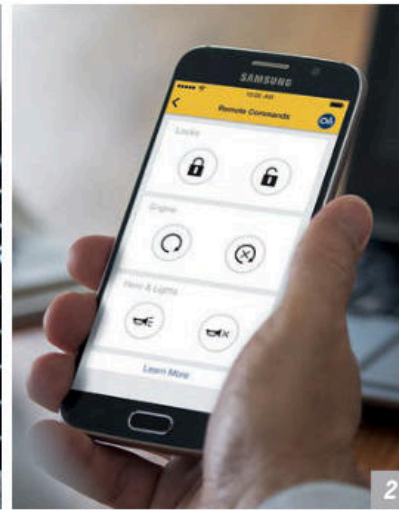
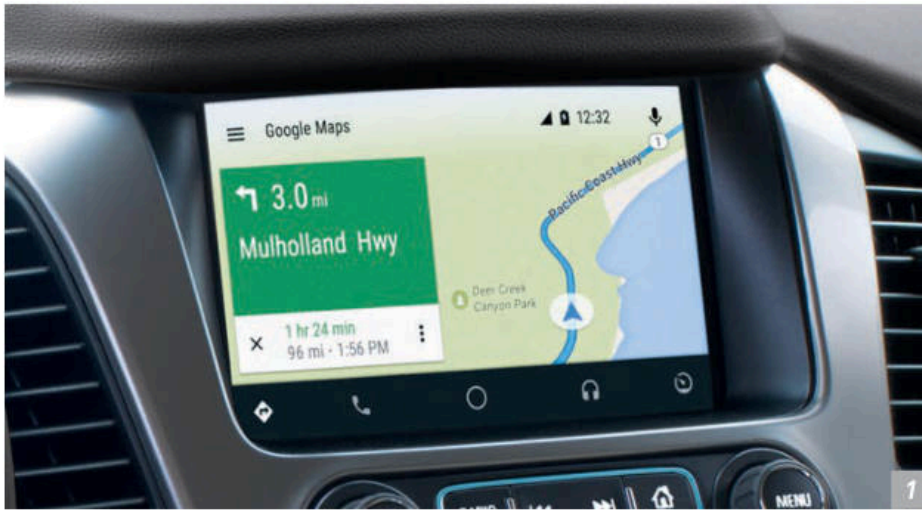


SHOP! Easily browse, select and install apps that enhance your driving experience so it gets better every day. Using your vehicle's touch-screen, you can customize your content with music, audiobooks, weather and more.

LUXURY IS A HOT TOPIC. A heated steering wheel is standard on Premier and available on LT, offering warm comfort on a cold day.

YOU'RE IN CHARGE. With as many as 14 charging locations, including an available wireless charging pad² and up to seven USB ports³ to connect phones, tablets and other portable devices, you'll always be able to stay in touch with your world.

¹ Visit chevrolet.com for details about Shop. ² The system wirelessly charges one PMA- or Qi-compatible mobile device. Some devices require an adaptor or back cover. To check for phone or other device compatibility, visit my.chevrolet.com/learn. ³ Not compatible with all devices.



1 Vehicle user interface is a product of Google and its terms and privacy statements apply. Requires compatible smartphone running Android 5.0 Lollipop or higher and data plan rates apply. **2** MyLink functionality varies by model. Full functionality requires compatible Bluetooth and smartphone, and USB connectivity for some devices. **3** Requires data plan, compatible vehicle and compatible device. Some features require factory-installed remote start, power locks, Tire Pressure Monitoring System or active OnStar service. **4** Map coverage available in the United States, Puerto Rico and Canada. **5** Requires Wi-Fi connection and compatible device.

Android Auto is a trademark of Google Inc.

1. AVAILABLE ANDROID AUTO

COMPATIBILITY.¹ You can quickly and intuitively interact with select smartphone apps with support for Android Auto.TM This system takes some of your compatible Android phone's features and puts them on the Chevrolet MyLink² display. You can access your navigation, phone, text messages, music and more.

2. myChevrolet Mobile App.³

Simply download the app to your compatible smartphone and if your vehicle is properly equipped, you can start or turn off the engine, lock/unlock the doors and send destinations to your available navigation⁴ system.

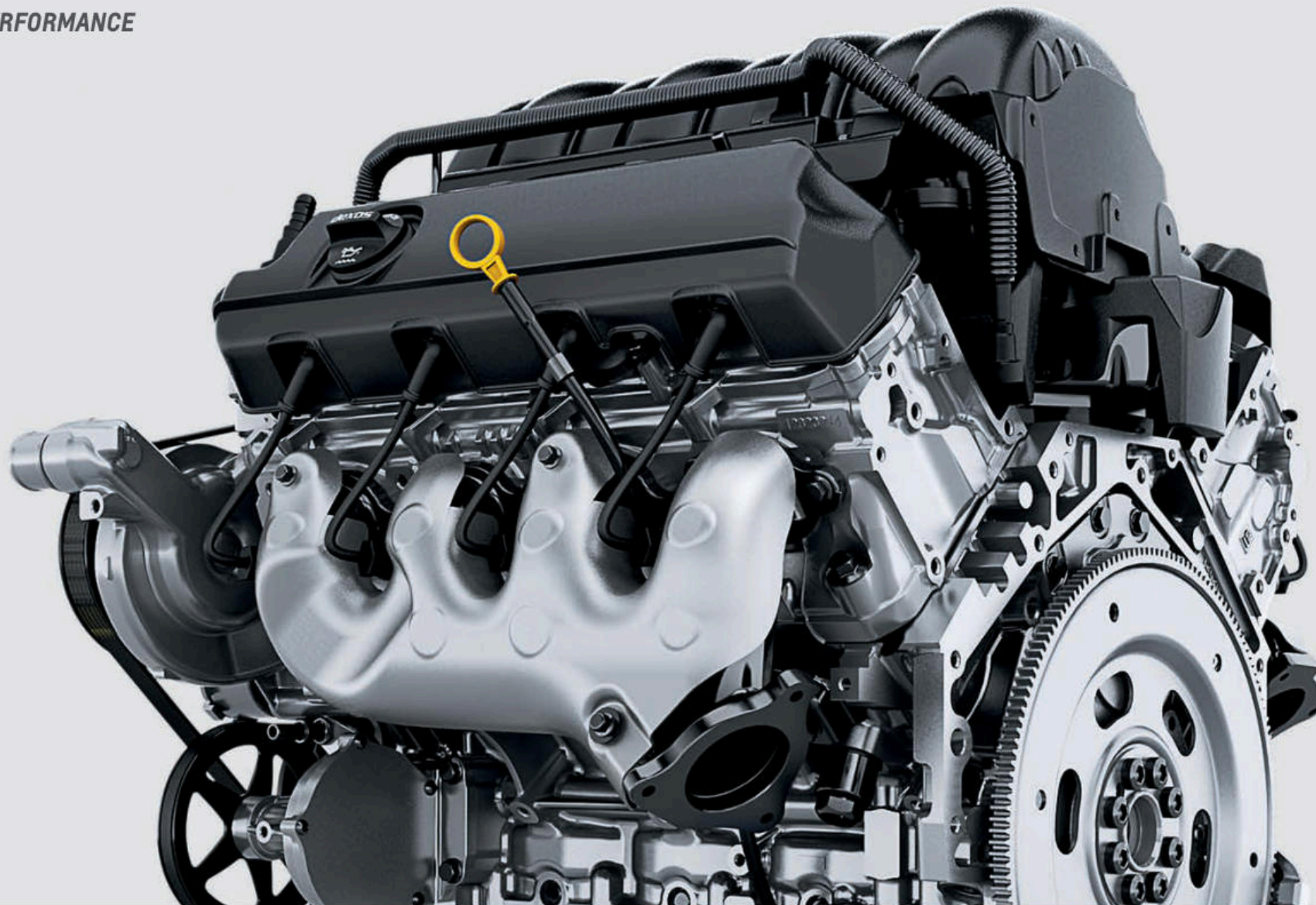
3. THAT'S ENTERTAINMENT.

The available Rear-Seat Blu-ray[®] Entertainment System lets rear-seat passengers enjoy every drive with their favorite movies. With a new HDMI connection and Wi-Fi,⁵ it's possible to project to the screen from your mobile devices.

4. AN EYE FOR INFORMATION.

The available color Head-Up Display projects information, such as speed and turn-by-turn navigation (if equipped), onto the windshield while you're driving so you can keep your eyes on the road. The Driver Information Center also provides critical data at a glance.

PERFORMANCE



THE ECOTEC3 ADVANTAGE. A trio of innovative technologies drive the 5.3L EcoTec3 V8 engine. Direct Injection boosts power and fuel efficiency.

Active Fuel Management™ deactivates four cylinders when extra power is not needed. Variable Valve Timing helps ensure Tahoe performs at optimum power and efficiency.

MAGNETIC RIDE CONTROL. Tahoe Premier features Corvette-inspired Magnetic Ride Control,¹ a real-time damping system that delivers a smooth, precise ride by “reading” the road a thousand times a second and changing damping in just 10-15 milliseconds.

LEAVE NOTHING BEHIND. With an available maximum towing capability of up to 8,600 lbs.¹, you can pull boats, trailers, ATVs or anything else you want to bring along.

¹ Requires 2WD and available Max Trailering Package. Before you buy a vehicle or use it for trailering, carefully review the Trailering section of the Owner's Manual. The weight of passengers, cargo and options or accessories may reduce the amount you can tow.

Tahoe LT in Tungsten Metallic
with available features.

355

HORSEPOWER

383

LB.-FT. TORQUE

23 MPG

BEST-IN-CLASS HIGHWAY FUEL ECONOMY¹



¹ Based on GM Large SUV segment. EPA-estimated MPG city/highway: Tahoe 2WD 16/23, 4WD 16/22.

WE'VE GOT YOU COVERED.



ADAPTIVE CRUISE CONTROL. This available feature enhances cruise control by allowing the vehicle to automatically follow a detected vehicle at the driver-selected following gap, reducing the need to frequently brake and accelerate.



FORWARD AUTOMATIC BRAKING. If the system determines a front-end collision is imminent with a detected vehicle ahead, and the driver has not already applied the brakes, this available system automatically engages the brakes to help reduce the collision's severity. The system may even help avoid contact at very low speeds.



LOW SPEED FORWARD AUTOMATIC BRAKING. If the vehicle is traveling at a low speed and this available system detects that a front-end collision situation is imminent while following a detected vehicle and the driver has not already applied the brakes, it automatically applies the brakes to help reduce the collision's severity. The system may even help avoid a collision at very low speeds.



FORWARD COLLISION ALERT. This available feature continually monitors how close your vehicle is to the vehicle in front of you. If the system determines that a front-end collision with a detected vehicle is imminent, it alerts the driver to a potential crash. It also warns the driver if their Tahoe is following a detected vehicle too closely.



LANE KEEP ASSIST. At speeds above 37 mph, this available camera-based system monitors road lines and will gently turn the

steering wheel if the vehicle begins changing lanes without the use of a turn signal.



SIDE BLIND ZONE ALERT. With radar sensors on both sides of the vehicle, available Side Blind Zone Alert helps to warn you when vehicles are in your side mirror blind zones and indicates their presence with LED-lit symbols in the exterior mirrors.



LANE CHANGE ALERT. Working with available Side Blind Zone Alert, available Lane Change Alert employs radar sensors in the rear corners of the vehicle to help detect and alert the driver to fast-approaching vehicles in the adjacent lanes from up to 230 feet away, not just in the side view mirror blind zones.



REAR CROSS TRAFFIC ALERT. Using the same radar sensors as the available Side Blind Zone Alert feature, available Rear Cross Traffic Alert helps alert drivers to approaching traffic when backing up. If an approaching vehicle is detected, the driver is warned with visual and audible alerts.



REAR VISION CAMERA. Standard on Tahoe, the rear vision camera displays a view of the area immediately behind the vehicle on the 8-inch diagonal color touch-screen – making it easier to see what's behind you while backing up.



FRONT AND REAR PARK ASSIST. Ideal when pulling into a parking spot at low speeds, this available system senses stationary objects and warns you if an object is too close. As you shift into Reverse, the rear vision

camera automatically displays a live image of the area behind the vehicle on the 8-inch diagonal color touch-screen and includes guiding lines to help when backing up.



TEEN DRIVER. This new technology encourages and coaches safe driving habits in a number of ways, including in-vehicle reports that monitor the frequency of available active safety feature activations, muting the audio system when front-seat occupants aren't wearing their safety belts, and giving audible and visual warnings when the vehicle is traveling over a predetermined speed.



INTELLIBEAM HEADLAMPS. When oncoming headlamps are sensed or when taillamps are detected in front of you, the available IntelliBeam® high beam assist intuitively adjusts between low and high beams.



SAFETY ALERT DRIVER SEAT. The available Safety Alert Driver Seat uses directional vibration pulses from the seat cushion instead of audible crash avoidance alerts to help indicate the direction of potential collision threats. This patented warning approach is tied into other onboard avoidance systems.



THEFT PROTECTION PACKAGE. Protect your investment with the GM class-exclusive available Theft Protection Package that includes glass breakage sensors, interior motion detectors and a revolutionary inclination sensor that measures any tilt of the vehicle.

SPECIAL FEATURES



Available Bose® Centerpoint® Surround Sound premium 10-speaker audio system.



Available power-retractable assist steps with perimeter lighting.



Rear vision camera.



Unique chrome grille insert (dealer-installed) available with the LT Signature Package.

WHEELS



22" Ultra Bright Machined-Aluminum
with Bright Silver Finish
(Available on Premier)



18" Aluminum with High-Polished Finish
(Standard on LS and LT)



18" Painted-Aluminum
(Available on LT; requires
Z71 Off-Road Package)



18" Black-Painted Aluminum
(Included with Z71 Midnight Edition;
late availability)



20" Polished-Aluminum
(Standard on Premier;
available on LS and LT)



20" Chrome-Aluminum
(Available on Premier;
included with LT Signature Package)



20" Black-Painted Aluminum
(Included with LT Midnight Edition;
late availability)



22" Chrome-Aluminum
Multi-Featured Design
(Available on LT and Premier)



22" Chrome-Aluminum
(Available on LT and Premier)



22" Premium Painted-Aluminum
with Chrome Inserts
(Available on LT and Premier)

COLORS



SUMMIT WHITE



IRIDESCENT PEARL TRICOAT^{1,2}



SILVER ICE METALLIC



TUNGSTEN METALLIC



CHAMPAGNE SILVER METALLIC



PEPPERDUST METALLIC



SIREN RED TINTCOAT¹



BLUE VELVET METALLIC



BLACK

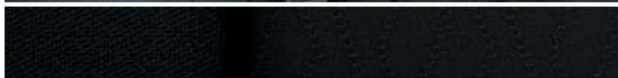
FABRICS



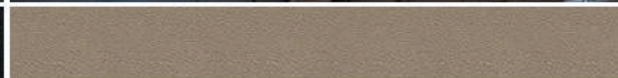
Cocoa/Mahogany Perforated Leather Appointments¹



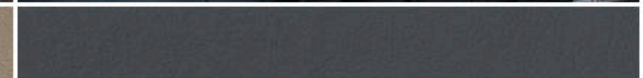
Cocoa/Dune Premium Cloth²



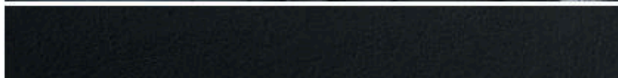
Jet Black Premium Cloth²



Cocoa/Dune Leather Appointments³



Jet Black/Dark Ash Leather Appointments³



Jet Black Leather Appointments³



Cocoa/Dune Perforated Leather Appointments⁴



Jet Black Perforated Leather Appointments⁴

¹ Available on Premier. Extra-cost color. ² Standard on LS. ³ Standard on LT. ⁴ Standard on Premier.

SELECT VEHICLE FEATURES

TAHOE LS

5.3L EcoTec3 V8 engine with Active Fuel Management, Direct Injection and Variable Valve Timing

6-speed automatic transmission with Tow/Haul mode

Automatic locking rear differential

Autotrac® single-speed active transfer case (4WD models)

Electric Power Steering

4-wheel disc brakes with Duralife™ brake rotors

Frontal and side-impact air bags¹ for driver and front passenger, driver inboard seat-mounted side-impact Front Center Air Bag (requires front bucket seats) and head-curtain side-impact air bags for all rows in outboard seating positions

OnStar Guidance Plan² (standard for the first three months, trial excludes Hands-Free Calling minutes), includes Automatic Crash Response and Turn-by-Turn Navigation

Teen Driver technology

Rear Seat Reminder feature

Power-programmable door locks with lockout protection

Daytime running lamps with automatic exterior lamp control

Projector-beam headlamps

LED taillamps

Outside heated power-adjustable, manual-folding body-color mirrors with driver spotter mirror

Active aero shutters behind front grille

Rear vision camera

Rear Park Assist

Intermittent front wipers with Rainsense®

Intermittent rear wiper with washer

Black assist steps

Capless fueling

18" aluminum wheels with high-polished finish

Chevrolet MyLink³ Radio with 8-inch diagonal color touch-screen display, Bluetooth® audio streaming⁴ and AM/FM/HD Radio⁵ with CD player, includes 5 USB ports⁵ and auxiliary input jack

SiriusXM Satellite Radio⁶ All Access Package with 3-month trial subscription

Bluetooth wireless technology⁴ for select phones

Steering wheel-mounted audio and cruise controls and Driver Information Center controls

TAHOE LS (CONTINUED)

Tri-zone automatic climate controls with individual climate settings for driver, right-front passenger and rear passengers

Electronic cruise control with Set and Resume Speed

Driver Information Center (DIC) with 4.2-inch diagonal multi-function color display

OnStar 4G LTE and built-in Wi-Fi® hotspot for up to seven devices;⁷ includes data trial for 3 months or 3 GB (whichever comes first)

Interior lighting: Dome light, driver- and passenger-side door switch lighting with delayed entry feature, cargo lights, door handle- or Remote Keyless Entry-activated illuminated entry lighting, and map lights in first and second rows

11 charging locations including a 110-volt power outlet, 5 USB ports⁵ and 5 auxiliary 12-volt power outlets

Remote Keyless Entry

Remote vehicle starter system

Leather-wrapped steering wheel

Floor console with storage area, cup holders and auxiliary input jack

Overhead console with conversation mirror

First- and second-row carpeted floor mats

Fold-flat second- and third-row seats

Underfloor storage with Cargo Management System in rear cargo area and cargo net

Electric rear-window defogger

Power windows with express-down, express-up for driver and front passenger

Trailer equipment: Trailing hitch platform, 7-wire harness with independent fused trailer circuits mated to a 7-way sealed connector and 2-inch trailer hitch receiver

TAHOE LT In addition to or replacing LS features, LT includes:

Forward Collision Alert

Low Speed Forward Automatic Braking

Lane Keep Assist

Safety Alert Driver Seat

IntelliBeam high beam assist

Programmable power liftgate

Bose® premium 9-speaker audio system (8-speaker system with 8-passenger seating)

Leather-appointed front bucket seats with heated seat cushions and seatbacks

Power-adjustable pedals with memory

TAHOE LT (CONTINUED)

10-way power driver and passenger seats with 6-way power cushions, 2-way power lumbar control and power recline; driver-seat memory

Manual tilt and telescoping steering column

Inside rearview auto-dimming mirror

Universal Home Remote

TAHOE PREMIER In addition to or replacing LT features, Premier includes:

Magnetic Ride Control suspension

Side Blind Zone Alert with Lane Change Alert

Rear Cross Traffic Alert

Front and Rear Park Assist

LED daytime running lamps

High-intensity discharge (HID) headlamps

Foglamps

Outside heated power-adjustable, power-folding mirrors with integrated turn signal indicators, ground illumination, driver-side auto-dimming feature and memory feature

Body-color bodyside moldings

Body-color trailer hitch closeout

20" polished-aluminum wheels

Hands-free power liftgate

Chevrolet MyLink³ Radio with Navigation: 8-inch diagonal color touch-screen display, Bluetooth audio streaming⁴ AM/FM/HD Radio with CD player, and GPS navigation system, includes 5 USB ports⁵ and auxiliary input jack

Bose® Centerpoint® Surround Sound premium 10-speaker audio system

Keyless Open and Start

Power tilt and telescoping steering column

Heated steering wheel

Perforated leather-appointed seats

Heated and vented front bucket seats with 12-way power adjusters

Heated second-row bucket seats with power release

Power-folding 60/40 split-bench third-row seat

12 charging locations including a 110-volt power outlet, 5 USB ports⁵; 5 auxiliary 12-volt power outlets and a wireless charging pad⁸

1 A NOTE ON CHILD SAFETY: Always use safety belts and the correct child restraint for your child's age and size, even with air bags. Even in vehicles equipped with the Passenger Sensing System, children are safer when properly secured in a rear seat in the appropriate infant, child or booster seat. Never place a rear-facing infant restraint in the front seat of any vehicle equipped with an active frontal air bag. See the Owner's Manual and the child safety seat instructions for more safety information. **2** Visit onstar.com for coverage map, details and system limitations. OnStar acts as a link to existing emergency service providers. **3** MyLink functionality varies by model. Full functionality requires compatible Bluetooth and smartphone, and USB connectivity for some devices. Map coverage available in the United States, Puerto Rico and Canada. **4** Visit my.chevrolet.com/learn for vehicle and smartphone compatibility. **5** Not compatible with all devices. **6** If you decide to continue service after your trial, the subscription plan you choose will automatically renew thereafter and you will be charged according to your chosen payment method at then-current rates. Fees and taxes apply. To cancel you must call SiriusXM at 1-866-635-2349. See SiriusXM Customer Agreement for complete terms at siriusxm.com. All fees and programming subject to change. For more information about NavTraffic, visit siriusxm.com/navtraffic. For more information about Travel Link, visit siriusxm.com/travellink. **7** Requires a compatible mobile device, active OnStar service and data plan. 4G LTE service available in select markets. Visit onstar.com for coverage map, details and system limitations. Data plans provided by AT&T. **8** The system wirelessly charges one PMA- or Qi-compatible mobile device. Some devices require an adaptor or back cover. To check for phone or other device compatibility, visit my.chevrolet.com/learn.

SPECIFICATIONS

● STANDARD ○ AVAILABLE – NOT AVAILABLE

	LS	LT	PREMIER
EXTERIOR			
Assist steps: Power-retractable with chrome accent strip and perimeter lighting	-	-	○
ENGINE/CHASSIS			
Engine: 5.3L EcoTec3 V8 with Direct Injection, Variable Valve Timing and Active Fuel Management; 355 hp @ 5600 rpm, 383 lb.-ft. of torque @ 4100 rpm	●	●	●
Trailer brake controller: ABS-integrated ¹	○	○	○
Transfer case: Active, 2-speed, electronic Autotrac with rotary controls and Neutral position for dinghy towing (4WD models)	○	○	○
Transmission: 6-speed automatic, electronically controlled with overdrive and Tow/Haul mode	●	●	●
INTERIOR			
Adaptive Cruise Control with Forward Automatic Braking: Sophisticated radar transceiver automatically adjusts speed to maintain preset following distance	-	-	○ ²
Driver Information Center with 8-inch diagonal multi-color reconfigurable display and Head-Up Display with multi-function readouts	-	-	○
Sunroof: Power, tilt-sliding with express-open/-close and wind deflector	-	○	○
SEATING			
Front bucket seats: Premium Cloth; 10-way power driver seat with 6-way power cushion, 2-way power lumbar control and power recline; passenger seat includes power fore/aft, power recline and power lumbar control	●	-	-
3-passenger front 40/20/40 split-bench seat: Premium Cloth with 6-way power driver and 2-way right-front passenger seat adjusters; driver and right-front passenger power lumbar control and power recline; center fold-down armrest with storage; storage compartments in seat cushion (includes auxiliary power outlet); storage pockets; and adjustable outboard head restraints	○	-	-
Second-row split-bench seat, power-release	-	○ ³	○
Second-row bucket seats, manual-release	-	○	-
Second-row bucket seats, power-release	-	○ ³	●

	LS	LT	PREMIER
AUDIO SYSTEMS			
Bose premium 9-speaker audio system (8-speaker system with 8-passenger seating)	-	●	-
Bose Centerpoint Surround Sound premium 10-speaker audio system	-	-	●
Chevrolet MyLink ⁴ Radio with Navigation: 8-inch diagonal color touch-screen display, Bluetooth audio streaming ⁵ AM/FM/HD Radio with CD player, and GPS navigation system, includes 5 USB ports ⁶ and auxiliary input jack	-	○	●
Rear-Seat Blu-ray ⁸ Entertainment System: Blu-ray/DVD player with Wi-Fi ⁷ wireless projection capability and remote control, overhead display, two 2-channel wireless digital headphones, auxiliary HDMI/MHL audio/video input and 2 USB ports ⁶	-	○	○
OnStar Basic Plan ⁹ for five years includes select features of the myChevrolet Mobile App ⁹ including remote start (if equipped), door lock or unlock, honk your horn and flash your lights, and send destinations to your Chevrolet MyLink ⁴ navigation screen (if equipped). Limited OnStar services include Advanced Diagnostics and Dealer Maintenance Notification	●	●	●
OnStar 4G LTE and built-in Wi-Fi hotspot for up to seven devices; ¹⁰ includes data trial for 3 months or 3 GB (whichever comes first)	●	●	●

	LS	LT	PREMIER
WHEELS			
18" aluminum with high-polished finish	●	●	-
18" painted-aluminum	-	○ ¹¹	-
18" Black-painted aluminum	-	○ ¹²	-
20" polished-aluminum	○	○ ¹³	●
20" chrome-aluminum	-	○ ¹⁴	○
20" Black-painted aluminum	-	○ ¹⁵	○
22" Ultra Bright machined-aluminum with Bright Silver finish	-	-	○
22" chrome-aluminum	-	○ ¹³	○
22" chrome-aluminum multi-featured design	-	○ ¹³	○
22" premium painted-aluminum with chrome inserts	-	○ ¹³	○

¹ Requires available Max Trailering Package. ² Requires available Driver Information Center with 8-inch diagonal display. ³ Requires available Luxury Package or Texas Edition Package. ⁴ MyLink functionality varies by model. Full functionality requires compatible Bluetooth and smartphone, and USB connectivity for some devices. Map coverage available in the United States, Puerto Rico and Canada. ⁵ Visit my.chevrolet.com/learn for vehicle and smartphone compatibility. ⁶ Not compatible with all devices. ⁷ Requires Wi-Fi connection and compatible device. ⁸ Does not include emergency or security services. Visit onstar.com for coverage map, details and system limitations. ⁹ Requires data plan, compatible vehicle and compatible device. Some features require factory-installed remote start, power locks, Tire Pressure Monitoring System or active OnStar service. ¹⁰ Requires a compatible mobile device, active OnStar service and data plan. 4G LTE service available in select markets. Visit onstar.com for coverage map, details and system limitations. Data plans provided by AT&T. ¹¹ Requires available Z71 Off-Road Package. ¹² Requires available Z71 Midnight Edition. ¹³ Not available with Z71 Off-Road Package or Z71 Midnight Edition. ¹⁴ Requires available LT Signature Package. ¹⁵ Requires available LT Midnight Edition.

SPECIFICATIONS (CONTINUED)

● STANDARD ○ AVAILABLE – NOT AVAILABLE

	LS	LT	PREMIER
PACKAGES			
Max Trailering Package: 3.42 rear axle ratio and integrated trailer brake controller; LS and LT models include rear air leveling suspension; 4WD models include Autotrac 2-speed active transfer case	○	○ ¹	○
All-Season Package: 20" polished-aluminum wheels, all-season blackwall tires, body-color bodyside moldings, Black roof rack cross rails, Max Trailering Package, all-weather floor mats and all-weather rear cargo mat	○	–	–
Enhanced Driver Alert Package: Power-adjustable pedals, Forward Collision Alert, IntelliBeam headlamps, Low Speed Forward Automatic Braking, Lane Keep Assist and Safety Alert Driver Seat	○	–	–
LT Signature Package: 20" chrome-aluminum wheels, all-season blackwall tires, bright bodyside moldings, chrome grille insert, polished exhaust tip, chrome recovery hooks and chrome assist steps	–	○ ²	–
Luxury Package: Keyless Open and Start, power-fold third-row bench seat, second-row power-release bench seat, heated second-row seats, memory for outside mirrors and steering column settings, power tilt and telescoping steering column, heated steering wheel, wireless charging pad ³ on front center armrest, outside heated power-adjustable power-folding mirrors, hands-free power liftgate, foglamps, Front and Rear Park Assist, Rear Cross Traffic Alert, Side Blind Zone Alert with Lane Change Alert, body-color trailer hitch closeout, and additional 9 months of SiriusXM Satellite Radio ⁴ All Access Package and NavTraffic ⁴ and Travel Link ⁴	–	○	–
LT Midnight Edition: 20" Black-painted aluminum wheels, all-season blackwall tires, front and rear Black bowtie emblems, Black exterior paint, and leather-appointed interior (late availability)	–	○	–
Z71 Midnight Edition: Z71 Off-Road Package plus 18" Black-painted aluminum wheels with Goodyear DuraTrac tires, front and rear Black bowtie emblems, unique Z71 Midnight grille, Black exterior paint, and leather-appointed interior (4WD models; late availability)	–	○	–

	LS	LT	PREMIER
PACKAGES (CONTINUED)			
Z71 Off-Road Package: Z71 Off-Road Suspension, 3.42 rear axle ratio, Autotrac 2-speed active transfer case, high-capacity air cleaner, Hill Descent Control, Front and Rear Park Assist, Black recovery hooks, foglamps, and Z71-specific features including unique grille design, skid plates, 18" wheels with off-road tires, Black tubular assist steps, front sill plates, rubber floor mats with Z71 logo, Z71 decal on instrument cluster, and Z71 badges on pillar and liftgate (4WD models)	–	○	–
Texas Edition Package: Texas Edition door badges, Keyless Open and Start, power-fold third-row bench seat, second-row power-release bench seat, heated second-row seats, memory for outside mirrors and steering column settings, power tilt and telescoping steering column, heated steering wheel, wireless charging pad ³ on front center armrest, roof rack cross rails, outside heated power-adjustable power-folding mirrors, hands-free power liftgate, foglamps, Front and Rear Park Assist, Rear Cross Traffic Alert, Side Blind Zone Alert with Lane Change Alert, body-color trailer hitch closeout, and additional 9 months of SiriusXM Satellite Radio ⁴ All Access Package and NavTraffic ⁴ and Travel Link ⁴	–	○	–
Sun, Entertainment and Destinations Package: Chevrolet MyLink ⁵ Radio with Navigation (LT), power sunroof, Rear-Seat Blu-ray Entertainment System, and additional 9 months of SiriusXM Satellite Radio ⁴ All Access Package and NavTraffic ⁴ and Travel Link ⁴	–	○	○
Theft Protection Package: Self-powered horn, interior movement and vehicle inclination sensors, door lock and liftgate shields, and glass breakage sensors in rear quarter glass and liftgate window; removes sunglasses holder and conversation mirror from overhead console	–	○ ²	○

¹ Not available with Z71 Off-Road Package or Z71 Midnight Edition. ² Requires available Luxury Package or Texas Edition Package. ³ The system wirelessly charges one PMA- or Qi-compatible mobile device. Some devices require an adaptor or back cover. To check for phone or other device compatibility, visit my.chevrolet.com/learn. ⁴ If you decide to continue service after your trial, the subscription plan you choose will automatically renew thereafter and you will be charged according to your chosen payment method at then-current rates. Fees and taxes apply. To cancel you must call SiriusXM at 1-866-635-2349. See SiriusXM Customer Agreement for complete terms at siriusxm.com. All fees and programming subject to change. For more information about NavTraffic, visit siriusxm.com/navtraffic. For more information about Travel Link, visit siriusxm.com/travelink. ⁵ MyLink functionality varies by model. Full functionality requires compatible Bluetooth and smartphone, and USB connectivity for some devices. Map coverage available in the United States, Puerto Rico and Canada.



Experience Chevrolet Complete Care, a comprehensive coverage, warranty and protection program that comes standard with every new 2017 Chevrolet Tahoe lease and purchase. Simply, it is designed around you, to make it easy to keep your Chevrolet like new – and give you the confidence you deserve when you need it most.

YOUR COMPREHENSIVE OWNER BENEFIT PROGRAM.

Includes two maintenance visits (oil and filter changes, tire rotations and multipoint vehicle inspections)¹

5 years/60,000 miles of Roadside Assistance and Courtesy Transportation²

5-year/60,000-mile Powertrain Limited Warranty³

3-year/36,000-mile Bumper-to-Bumper Warranty³

6 years/100,000 miles of Rust-Through Protection²

5 years of OnStar Basic Plan³ including select features of the myChevrolet Mobile App⁴

3 months of OnStar Guidance Plan⁵

DIMENSIONS

Width	80.5"
Front Track	68.8"
Rear Track	68.7"

Length	204.0"
Wheelbase	116.0"
Height	74.4"

MAXIMUM CAPACITIES

EPA-ESTIMATED FUEL ECONOMY

5.3L EcoTec3 V8 2WD	16 MPG city/23 highway/19 combined
5.3L EcoTec3 V8 4WD	16 MPG city/22 highway/18 combined

FUEL TANK (APPROXIMATE) 26 gallons

TRAILER WEIGHT RATING⁶
 2WD: 6,600 lbs.
 2WD: 8,600 lbs. with Max Trailering Package
 4WD: 6,400 lbs.
 4WD: 8,400 lbs. with Max Trailering Package, Z71 Off-Road Package or Z71 Midnight Edition

SEATING
 LS: seats 8, option for 9
 LT: seats 8, option for 7
 Premier: seats 7, option for 8

CARGO VOLUME⁷ (CUBIC FEET)
 Behind third-row seat: 15.3
 With third-row seat folded: 51.7
 With second- and third-row seats folded: 94.7

OWNERSHIP EXTRAS

CHEVROLET  CHEVROLET.COM/WARRANTY

CHEVROLET  CHEVROLET.COM/ACCESSORIES

 ONSTAR.COM

 SIRIUSXM.COM

NEW VEHICLE LIMITED WARRANTY

5-YEAR/60,000-MILE TRANSFERABLE POWERTRAIN LIMITED WARRANTY Every 2017 Chevrolet Tahoe comes with a 5-year/60,000-mile (whichever comes first) transferable Powertrain Limited Warranty. 24/7 Roadside Assistance and Courtesy Transportation are also offered for the duration of the Powertrain Limited Warranty. Please see your Chevrolet dealer for details.

3-YEAR/36,000-MILE BUMPER-TO-BUMPER LIMITED WARRANTY Chevrolet will warrant each 2017 Tahoe from bumper to bumper for 3 years/36,000 miles (whichever comes first; see dealer for details), with no deductible, from the original in-service date of the vehicle, for warrantable repairs that are required as a result of defects due to materials and/or workmanship. Cosmetic corrosion resulting from defects is also covered under the Bumper-to-Bumper Limited Warranty. In addition, rust-through corrosion will be covered for 6 years/100,000 miles (whichever comes first). See dealer for details.

¹ Maintenance visits must occur within two years or 24,000 miles of vehicle delivery, whichever comes first. Does not include air filters. See participating dealer for other restrictions and complete details. ² Whichever comes first. See dealer for details. ³ Does not include emergency or security services. Visit onstar.com for coverage map, details and system limitations. ⁴ Requires data plan, compatible vehicle and compatible device. Some features require factory-installed remote start, power locks, Tire Pressure Monitoring System or active OnStar service. ⁵ Visit onstar.com for coverage map, details and system limitations. ⁶ Before you buy a vehicle or use it for trailering, carefully review the Trailering section of the Owner's Manual. The weight of passengers, cargo and options or accessories may reduce the amount you can tow. ⁷ Cargo and load capacity limited by weight and distribution.

IMPORTANT INFORMATION

CHEVROLET OWNER CENTER (MY.CHEVROLET.COM) Everything you need to know. Anything you need to do. Your Chevrolet Owner Center makes it easy. Create your account today to get the most out of your new vehicle. Get special alerts and offers, schedule service, review your maintenance schedule, and view how-to videos specifically for your vehicle. All online, anytime. Visit the Owner Center today to register or take a tour.

ENGINES Chevrolet products are equipped with engines produced by GM Powertrain or other suppliers to GM worldwide. The engines in Chevrolet products may also be used in other GM makes and models.

ASSEMBLY Chevrolet vehicles and their components are assembled or produced by different operating units of General Motors, its subsidiaries or suppliers to GM worldwide. We sometimes find it necessary to produce Chevrolet vehicles with different or differently sourced components than originally scheduled. Since some options may be unavailable when your vehicle is assembled, we suggest you verify that your vehicle includes the equipment you ordered and that, if there were changes, they are acceptable to you.

ONSTAR OnStar services require vehicle electrical system (including battery), wireless service and GPS satellite signals to be available and operating for features to function properly. OnStar acts as a link to existing emergency service providers. Subscription Service Agreement required. Call 1.888.4ONSTAR (1-888-466-7827) or visit onstar.com for OnStar Terms and Conditions, Privacy Policy, details and system limitations.

A NOTE ON CHILD SAFETY Always use safety belts and the correct child restraint for your child's age and size, even with air bags. Even in vehicles equipped with the Passenger Sensing System, children are safer when properly secured in a rear seat in the appropriate infant, child or booster seat. Never place a rear-facing infant restraint in the front seat of any vehicle equipped with an active frontal air bag. See the Owner's Manual and the child safety seat instructions for more safety information.

IMPORTANT WORDS ABOUT THIS CATALOG We have tried to make this catalog comprehensive and factual. We reserve the right, however, to make changes at any time, without notice, in prices, colors, materials, equipment, specifications, models and availability. Specifications, dimensions, measurements, ratings and other numbers in this catalog

and other printed materials provided at the dealership or affixed to vehicles are approximations based on design and engineering drawings, prototypes and laboratory tests. Your vehicle may differ due to variations in manufacture and equipment. Since some information may have been updated since the time of printing, please check with your Chevrolet dealer for complete details. Chevrolet reserves the right to lengthen or shorten the model year for any product for any reason or to start and end model years at different times. Certain vehicle features may lose their usefulness over time due to obsolescence from technological changes. Unless otherwise noted, all claims based on GM Large SUV segment and latest available competitive information. Excludes other GM vehicles.

FLEET ORDERS Some standard content may be deleted on fleet orders. See dealer for details.

CHEVROLET OWNERSHIP EXPERIENCE Chevrolet is committed to enhancing the vehicle shopping and ownership experience through a wide array of programs. Visit chevrolet.com to build and price, find a vehicle, request a quote, compare vehicles, find financial tools or track your vehicle order. You'll also find information about 24-hour Roadside Assistance, Courtesy Transportation, Customer Assistance, GM Mobility, safety and current incentives.

CHEVROLET.COM/SAFETY Chevrolet is committed to keeping you and your family safe – from the start of your journey to your destination. That's why every Chevrolet is designed with a comprehensive list of safety and security features to help give you peace of mind.

GMMOBILITY.COM (1-800-323-9935) GM Mobility™ offers financial assistance for eligible adaptive equipment to make automotive travel easier for persons with disabilities or special transportation needs. To learn more about special GM Mobility offers, visit gmmobility.com.

THE BUYPOWER CARD The Chevrolet BuyPower Card – Every purchase you make with the BuyPower Card from Capital One* helps you earn toward an eligible new Chevrolet, Buick, GMC or Cadillac vehicle. There's no limit on the amount you can earn or redeem, and your Earnings don't expire. Visit chevroletbuypowercard.com/catalogs.

* Capital One, N.A. is the issuer of the BuyPower Card. General Motors ("GM") is responsible for the operation and administration of the Earnings program.



TWITTER.COM/CHEVROLET



YOUTUBE.COM/CHEVROLET



FACEBOOK.COM/CHEVROLET

GM, the GM logo, Chevrolet, the Chevrolet logo, and the slogans, emblems, vehicle model names, vehicle body designs and other marks appearing in this catalog are the trademarks and/or service marks of General Motors, its subsidiaries, affiliates or licensors. ©2016 OnStar. All rights reserved. Sirius, XM, SiriusXM and all related marks and logos are trademarks of Sirius XM Radio Inc. The Bluetooth word mark is a registered trademark owned by Bluetooth SIG, Inc., and any use of such mark by Chevrolet is under license. Bose and Centerpoint are registered trademarks of the Bose Corp. Blu-ray is a registered trademark of the Blu-ray Disc Association. The Android name, the Android logo, and other trademarks are property of Google Inc. Google is a trademark of Google Inc. ©2016 General Motors. All rights reserved. October 2016



FIND *NEW* ROADS™

CHEVROLET.COM