

TRAVERSE 2017

CHEVROLET



Traverse Premier in Siren Red
Tintcoat (extra-cost color).



THE POSSIBILITIES ARE ENDLESS.

Whatever you need to do and wherever you need to go, Traverse has the capability to get it done. So it's no wonder Traverse was named 2016 Best Large SUV for the Money by *U.S. News & World Report*!

A closer look reveals Traverse offers something for everyone. Spacious seating for up to eight.² Impressive class-leading maximum cargo space. Upscale amenities like an available built-in 4G LTE Wi-Fi[®] hotspot.³ And innovative features that include available active safety technologies and an available industry-first Front Center Air Bag.⁴ All wrapped around a richly refined interior and boldly styled exterior designed to turn heads.

With so much going on, it's easy to see why Automotive Science Group™ put Traverse on its list for 2016 Best 5 All-Around Performance.

¹ View U.S. News & World Report at www.usnews.com/cars. ² Standard on LS and 1LT. Available on 2LT. Premier shown seats 7. ³ Requires a compatible mobile device, active OnStar service and data plan. 4G LTE service available in select markets. Visit onstar.com for coverage map, details and system limitations. Data plans provided by AT&T. ⁴ A NOTE ON CHILD SAFETY: Always use safety belts and the correct child restraint for your child's age and size, even with air bags. Even in vehicles equipped with the Passenger Sensing System, children are safer when properly secured in a rear seat in the appropriate infant, child or booster seat. Never place a rear-facing infant restraint in the front seat of any vehicle equipped with an active frontal air bag. See the Owner's Manual and the child safety seat instructions for more safety information.

FIND NEW ROADS™

EXTERIOR DESIGN



Traverse Premier in Siren Red
Tintcoat (extra-cost color).



1



2



3

1. BETTER TO BE SEEN. Available turn signals on side mirrors help contribute to safe driving.

2. BRIGHTEN YOUR DRIVE. Amenities such as standard dual-lamp halogen headlamps and daytime running lamps provide a brilliant way to see and be seen.

3. MAXIMIZE SPACE AND PERFORMANCE. Designed for you and your family with best-in-class maximum cargo space, Traverse has the room to cover every possibility. Plus, Premier models feature a dual exhaust with bright tips that not only looks good, but also enhances horsepower.

INTERIOR DESIGN



Traverse Premier interior in Ebony/
Saddle Up with available features.

1 Requires Guidance or Navigation Add-On Plan. Visit onstar.com for coverage map. Services vary by model. 2 Visit onstar.com for coverage map, details and system limitations. 3 Full functionality requires compatible Bluetooth and smartphone, and USB connectivity for some devices. Map coverage available in the United States, Puerto Rico and Canada. 4 If you decide to continue service after your trial, the subscription plan you choose will automatically renew thereafter and you will be charged according to your chosen payment method at then-current rates. Fees and taxes apply. To cancel you must call SiriusXM at 1-866-635-2349. See SiriusXM Customer Agreement for complete terms at siriusxm.com. All fees and programming subject to change. For more information about NavTraffic, visit siriusxm.com. For more information about Local Forecast, visit siriusxm.com/localforecast.

COMFORT AND CONTROL. Premier model amenities include heated/cooled driver and front passenger seats, a heated steering wheel and tri-zone automatic climate controls.

DETAIL-ORIENTED. Distinctive leather-appointed first- and second-row seats with perforated inserts are standard on Premier, giving Traverse an exceptional feel.

HARMONIOUS BENEFITS. The 10-speaker Bose® premium sound system (standard on Premier and 2LT) is engineered specifically to the acoustics of Traverse.

EFFORTLESS NAVIGATION. Get directions at the push of a button with OnStar® Turn-by-Turn Navigation; standard for three months with the Guidance Plan². Or go for the available Chevrolet MyLink³ Radio with Navigation, featuring full GPS guidance, along with a 3-month trial of SiriusXM NavTraffic⁴ and Local Forecast weather.

HIDDEN GEMS. There's plenty of storage throughout Traverse. The comfortably accommodating front-row center armrest includes space inside for small items. And when you slide the armrest backward, even more room is revealed.



¹ Cargo and load capacity limited by weight and distribution.

Traverse Premier interior in Ebony/
Saddle Up with available features.

GREAT ROOM FOR UP TO EIGHT. Traverse is all about options. Standard seating for eight includes second- and third-row flat-folding 60/40 split-bench seats (standard on LS Base, LS and 1LT; available on 2LT). Or choose 7-passenger seating with second-row flat-folding captain's chairs (available on 1LT and standard on 2LT and Premier).

SPACE TO FILL COMPETITORS WITH ENVY. With 116.3 cubic feet of maximum cargo space¹ and 24.4 cubic feet behind the third row,¹ Traverse is best-in-class.

SIMPLE TOUCHES. Press a button on the key fob and the available power-remote liftgate opens to make loading and unloading carefree. Ready, set and open with ease.

A SENSE OF SERENITY. Traverse features a tuned Acoustic Insulation Package with sound-blocking materials for a remarkably hushed ride.



1. FOR YOUR VIEWING PLEASURE. A dual SkyScape® power front sunroof and fixed rear skylight with sunshade is available on LT and Premier models.

2. AN UPSCALE ENVIRONMENT. Enjoy premium soft touch materials and ambient lighting on Premier models.

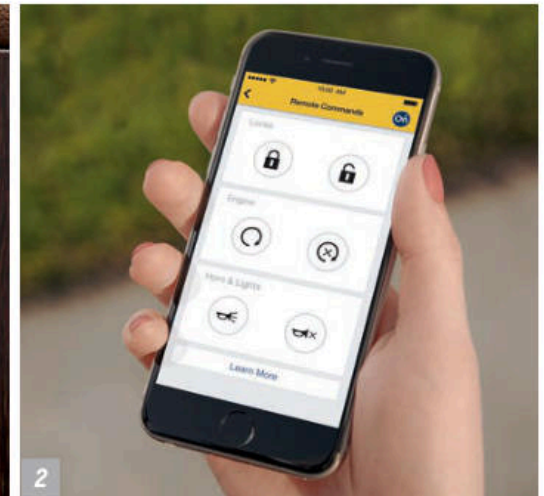
3. INTELLIGENT ACCESS. With a single hand movement, the Smart Slide® second-row seat slides out of the way for unobstructed access to the third-row bench seat.

TECHNOLOGY

1. REVERSE WITH CONFIDENCE. The standard rear vision camera uses the 6.5-inch diagonal color touch-screen to show the area behind your Traverse when backing up.

2. myChevrolet Mobile App. This mobile app¹ gives you access to your vehicle even when you're nowhere near it. Simply download the app to your compatible smartphone and, if your vehicle is properly equipped, you'll be able to start or turn off the engine, lock/unlock the doors, send destinations to the available navigation² system, view key vehicle diagnostic information, set parking reminders and more.

3. SMOOTH SAILING. A rear-seat DVD player with overhead display is available on LT and Premier models, keeping your kids entertained during long trips.



¹ Requires active OnStar service, compatible device, factory-installed remote start and power locks. Data rates apply. Visit onstar.com for details and system limitations. ² Map coverage available in the United States, Puerto Rico and Canada.



WANT MORE INFO?
GO TO CHEVY.COM/TRaverse



¹ Requires a compatible mobile device, active OnStar service and data plan. 4G LTE service available in select markets. Visit onstar.com for coverage map, details and system limitations. Data plans provided by AT&T. ² MyLink functionality varies by model. Full functionality requires compatible Bluetooth and smartphone, and USB connectivity for some devices. ³ Go to my.chevrolet.com/learn to find out which phones are compatible with the vehicle. ⁴ Visit my.chevrolet.com/learn for vehicle and smartphone eligibility. ⁵ Data plan rates apply. ⁶ Requires available Chevrolet MyLink and compatible iPhone running iOS 6 or later.

iPhone and Siri are trademarks of Apple Inc., registered in the U.S. and other countries.

STREAM SEAMLESSLY. Chevrolet is the first and only car company to offer built-in 4G LTE Wi-Fi^{®1} to cars, trucks and crossovers. You can seamlessly connect up to seven devices to the Internet¹ with great signal quality and bandwidth.

ON-COMMAND CONNECTIVITY. With available Chevrolet MyLink², you can handle calls effortlessly, play music and easily access contacts from your compatible smartphone simply by touching the 6.5-inch diagonal color touch-screen or through voice commands.

HANDS-FREE AND HASSLE-FREE. Bluetooth[®] wireless technology³ and steering wheel controls add seamless smartphone integration into your daily commute. You can also receive Text Message Alerts⁴ and stream music from online sources like available Pandora[®] Internet Radio⁵ and Stitcher SmartRadio.^{™5}

ALL EYES AHEAD. For compatible iPhone[®] users, Siri Eyes Free⁶ allows limited hands-free interaction for those times when you want to read or compose a text message, make a phone call or play your favorite music.

PERFORMANCE

Traverse Premier in Tungsten Metallic with available features.



22
MPG HIGHWAY¹

3.6L
V6 ENGINE

AVAILABLE
270
LB.-FT. TORQUE²

POWERED BY PERFORMANCE. Traverse is built to go places, with more horsepower and torque than the 2016 Toyota Highlander. The 3.6L V6 engine generates up to 288 horsepower and offers an EPA-estimated 22 MPG highway!

TONS OF TOWING POWER. A properly equipped Traverse can tow up to 5,200 lbs.³ That's capability unrivaled by any 2016 Ford Explorer or 2016 Toyota Highlander.

CONFIDENTLY IN CONTROL. Available all-wheel drive helps maintain sure-footed traction in all types of weather and road conditions. The tuned 4-wheel independent suspension delivers confident response and an ultra-smooth ride.

¹EPA estimate for Traverse FWD models. ²With available dual exhaust. ³Requires available trailering equipment. Before you buy a vehicle or use it for trailering, carefully review the Trailering section of the Owner's Manual. The weight of passengers, cargo and options or accessories may reduce the amount you can tow.

SAFETY



SAFETY STARTS WITH YOU. Safety features are no substitute for the driver's responsibility to operate the vehicle in a safe manner. The driver should remain attentive to traffic, surroundings and road conditions at all times. Read the vehicle Owner's Manual for important feature limitations and information.

TRAVERSE LOOKS AROUND, TO HELP KEEP YOU SAFE AND SOUND.

Whether you're on the road or in a parking lot, the available innovative active safety technologies in Traverse use strategically located cameras and sensors to help warn you of potential collisions.



FORWARD COLLISION ALERT. This safety feature continually monitors how close your vehicle is to the vehicle in front of you. If the system determines that a front-end collision with a detected vehicle is imminent, it alerts the driver to a potential crash. It also warns the driver if their Traverse is following a detected vehicle too closely (standard only on Premier).



SIDE BLIND ZONE ALERT. With radar sensors on both sides of the vehicle, available Side Blind Zone Alert helps to warn you when vehicles are in your side mirror blind zones and indicates their presence with LED-lit symbols in the exterior mirrors.



REAR CROSS TRAFFIC ALERT. This available feature alerts you to crossing traffic behind your Traverse when backing up. Audible warnings, as well as visual alerts on the rear vision camera screen, are triggered if approaching vehicles are detected.



LANE DEPARTURE WARNING. If you unintentionally change lanes without a turn signal, this camera-based system sends an alert. The camera, mounted near the inside rearview mirror, reads traffic lane markings when identifiable and provides audible and visual alerts (standard only on Premier).



REAR VISION CAMERA. The rear vision camera with dynamic guiding lines uses the 6.5-inch diagonal color touch-screen display to show the area behind your Traverse while you are backing up.



REAR PARK ASSIST. This available feature helps you back up by sounding an audible alert and providing visual indication on the rear vision camera display when it detects certain stationary objects up to eight feet behind the vehicle.



INDUSTRY-FIRST FRONT CENTER SIDE-IMPACT AIR BAG¹
The available Front Center Air Bag deploys from the right side of the driver seat and positions itself between the front seats for added cushioning and restraint to help protect the driver and passenger from colliding with one another in the event of a side-impact collision.

¹ A NOTE ON CHILD SAFETY: Always use safety belts and the correct restraint for your child's age and size, even with air bags. Even in vehicles equipped with the Passenger Sensing System, children are safer when properly secured in a rear seat in the appropriate infant, child or booster seat. Never place a rear-facing infant restraint in the front seat of any vehicle equipped with an active frontal air bag. See the Owner's Manual and the child safety seat instructions for more safety information.

SPECIAL FEATURES



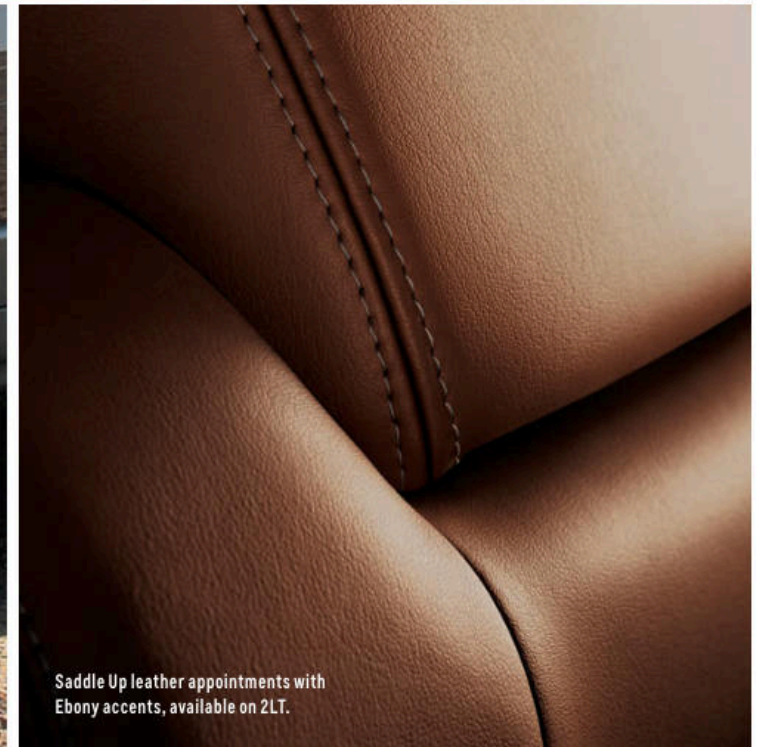
Side Blind Zone Alert, included in the available Leather and Driver Confidence Package.



Traverse Graphite Edition¹ includes 20" Dark Charcoal Metallic-painted wheels, dual exhaust, black bowtie emblems and integrated assist steps. Available in Iridescent Pearl Tricoat²; Siren Red Tintcoat²; Tungsten Metallic and Mosaic Black Metallic.



20" painted-aluminum wheels, included in the available Style and Technology Package.



Saddle Up leather appointments with Ebony accents, available on 2LT.

WHEELS



20" Machined-Aluminum
(Standard on Premier)



17" Steel with Painted Wheel Cover
(Standard on LS Base and LS)



18" Machined-Aluminum
(Standard on 1LT and 2LT, Available on LS)



20" Painted-Aluminum
(Available on 1LT, requires Style and Technology Package)



20" Dark Charcoal Metallic-Painted
(Available on 2LT, requires Graphite Edition)

COLORS



SUMMIT WHITE



IRIDESCENT PEARL TRICOAT^{1,2}



SILVER ICE METALLIC



CHAMPAGNE SILVER METALLIC¹



SIREN RED TINTCOAT^{1,2}



BLUE VELVET METALLIC³



TUNGSTEN METALLIC³



MOSAIC BLACK METALLIC¹

¹ Not available on LS Base or LS. ² Extra-cost color. ³ Not available on LS Base.

FABRICS



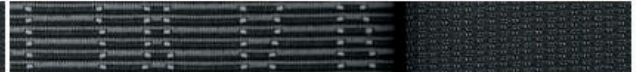
Light Titanium-Color Premium Cloth with Dark Titanium-Color Accents^{1,2}



Saddle Up Premium Cloth with Ebony Accents²



Ebony Premium Cloth with Ebony Accents²



Light Titanium-Color Leather Appointments with Dark Titanium-Color Accents³



Saddle Up Leather Appointments with Ebony Accents^{3,4}



Ebony Leather Appointments with Ebony Accents³



Light Titanium-Color Perforated Leather Appointments with Dark Titanium-Color Accents⁵



Saddle Up Perforated Leather Appointments with Ebony Accents⁵



Ebony Perforated Leather Appointments with Ebony Accents⁵



¹ Standard on LS Base and LS. ² Standard on 1LT and 2LT. ³ Available on 2LT. ⁴ Not available with 8-passenger seating. ⁵ Standard on Premier.

SELECT VEHICLE FEATURES

TRAVERSE LS BASE

3.6L DOHC V6 engine with Direct Injection
6-speed automatic transmission with TAPshift® manual shift control
OnStar Guidance Plan ¹ (standard for the first three months, trial excludes Hands-Free Calling minutes), includes Automatic Crash Response and Turn-by-Turn Navigation
StabiliTrak® Electronic Stability Control System with Proactive Roll Avoidance and Traction Control, includes Electronic Trailer Sway Control and Hill Start Assist
17" steel wheels with painted wheel covers
Tire Pressure Monitoring System (excludes spare tire)
Power-programmable door locks with lockout protection and rear-door child safety locks
Halogen headlamps with automatic exterior lamp control
Front and rear intermittent wipers with washers
Outside power-adjustable manual-folding black mirrors
Chrome door handles
Black roof rail moldings
Rear spoiler
Compact spare tire
AM/FM radio with 6.5-inch diagonal color touch-screen display, CD player and auxiliary input jack
Bluetooth® wireless technology ² for select phones with steering wheel-mounted controls
USB port ³ in lower instrument panel storage area and two charge-only USB ports ³ in rear of center console
First-row console with two cup holders, covered storage bin and sliding armrest with storage
Driver Information Center
Oil-Life Monitor

TRAVERSE LS BASE (CONTINUED)

Rear vision camera system with display integrated into 6.5-inch diagonal color touch-screen
Remote Keyless Entry
Cruise control with Set and Resume Speed
Comfort grip urethane steering wheel with mounted cruise and audio controls
Tilt/telescoping steering column
Premium Cloth seating
OnStar 4G LTE and built-in Wi-Fi® hotspot ⁴ for up to seven devices, includes data trial for 3 months or 3 GB (whichever comes first)
Acoustic Insulation Package
Rear underfloor storage

TRAVERSE LS In addition to or replacing LS Base features, LS includes:

SiriusXM Satellite Radio ⁵ All Access Package with 3-month trial subscription
Enhanced Driver Information Center

TRAVERSE 1LT In addition to or replacing LS features, 1LT includes:

Outside heated power-adjustable manual-folding body-color mirrors with turn signal indicators
Rear Park Assist
Foglamps
18" machined-aluminum wheels
8-way power-adjustable driver seat with power lumbar control and Front Center Air Bag ^{6,7}
Leather-wrapped steering wheel with mounted audio and cruise controls
Remote vehicle starter system

TRAVERSE 2LT In addition to or replacing 1LT features, 2LT includes:

Power-remote liftgate
Chevrolet MyLink ⁸ Radio with Bluetooth audio streaming, ² Siri Eyes Free ⁹ and Text Message Alerts ¹⁰
10-speaker Bose® premium sound system
Heated driver and front passenger seats
Tri-zone automatic climate controls
Inside rearview auto-dimming mirror

TRAVERSE PREMIER In addition to or replacing 2LT features, Premier includes:

Variable-effort power steering
Dual exhaust with bright tips
Forward Collision Alert and Lane Departure Warning
Rear Cross Traffic Alert
Side Blind Zone Alert
Outside heated power-adjustable power-folding mirrors with turn signal indicators and driver-side auto-dimming and memory features
20" machined-aluminum wheels
Chevrolet MyLink ^{8,11} Radio with Navigation
First- and second-row seats with perforated leather appointments
Heated and cooled driver and front passenger seats
Heated steering wheel

¹ Visit onstar.com for coverage map, details and system limitations. OnStar acts as a link to existing emergency service providers. ² Go to my.chevrolet.com/learn to find out which phones are compatible with the vehicle. ³ Not compatible with all devices. ⁴ Requires a compatible mobile device, active OnStar service and data plan. 4G LTE service available in select markets. Visit onstar.com for coverage map, details and system limitations. Data plans provided by AT&T. ⁵ If you decide to continue service after your trial, the subscription plan you choose will automatically renew thereafter and you will be charged according to your chosen payment method at then-current rates. Fees and taxes apply. To cancel you must call SiriusXM at 1-866-635-2349. See SiriusXM Customer Agreement for complete terms at siriusxm.com. All fees and programming subject to change. For more information about NavTraffic, visit siriusxm.com/navtraffic. For more information about Travel Link, visit siriusxm.com/travellink. ⁶ Requires available 8-way power driver seat. ⁷ A NOTE ON CHILD SAFETY: Always use safety belts and the correct restraint for your child's age and size, even with air bags. Even in vehicles equipped with the Passenger Sensing System, children are safer when properly secured in a rear seat in the appropriate infant, child or booster seat. Never place a rear-facing infant restraint in the front seat of any vehicle equipped with an active frontal air bag. See the Owner's Manual and the child safety seat instructions for more safety information. ⁸ MyLink functionality varies by model. Full functionality requires compatible Bluetooth and smartphone, and USB connectivity for some devices. ⁹ Requires available Chevrolet MyLink and compatible iPhone running iOS 6 or later. ¹⁰ Visit my.chevrolet.com/learn for vehicle and smartphone eligibility. ¹¹ Map coverage available in the United States, Puerto Rico and Canada.

SPECIFICATIONS

● STANDARD ○ AVAILABLE – NOT AVAILABLE

	LS BASE	LS	1LT	2LT	PREMIER
EXTERIOR					
Liftgate, rear: Manual	●	●	●	–	–
Power-remote	–	–	–	●	●
Mirrors: Manual-folding, power-adjustable, Black	●	●	–	–	–
Manual-folding, power-adjustable, heated, body-color with turn signal indicators	–	–	●	●	–
Power-folding, power-adjustable, heated, body-color with turn signal indicators, driver-side auto-dimming feature and Side Blind Zone Alert indicator	–	–	–	○ ¹	●
Rear Park Assist: Audible warning	–	–	●	●	●
Sunroof: SkyScape, power tilt-sliding front; fixed rear skylight with sunscreen	–	–	○	○	○
ENGINE/CHASSIS					
Engine: 3.6L DOHC V6 with Direct Injection, 281 horsepower and 266 lb.-ft. of torque (288 horsepower and 270 lb.-ft. of torque on Premier)	●	●	●	●	●
Exhaust: Single-outlet	●	●	●	●	–
Dual with bright tips	–	–	–	○ ²	●
Trailer equipment: Heavy-duty cooling system and trailer hitch	–	○	○	○	○
SAFETY & SECURITY					
Air bags: ³ Driver and front passenger, frontal and pelvic/thorax side-impact; head-curtain side-impact for all rows in outboard seating positions	●	●	●	●	●
Inboard seat-mounted side-impact center for driver and front passenger	–	○ ⁴	●	●	●
All-wheel drive	–	○	○	○	○
Brakes: 4-wheel antilock disc	●	●	●	●	●
Forward Collision Alert and Lane Departure Warning	–	–	–	–	●
Side Blind Zone Alert and Rear Cross Traffic Alert	–	–	–	○ ¹	●

	LS BASE	LS	1LT	2LT	PREMIER
INTERIOR					
Climate control: Rear, manual	●	●	●	–	–
Single-zone, front, manual	●	●	●	–	–
Tri-zone automatic	–	–	○ ⁵	●	●
Driver Information Center: Speedometer, tachometer, outside temperature display, odometer, trip odometer, voltmeter, coolant temperature, and indicators for low oil, fuel and coolant	●	–	–	–	–
Enhanced Driver Information Center: Personalization features, speedometer, tachometer, outside temperature display, odometer, trip odometer and trip computer with digital compass, and indicators for low oil, fuel and coolant	–	●	●	●	●
Mirror: Rearview, manual day/night	●	●	●	–	–
Rearview, auto-dimming	–	–	–	●	●
Remote vehicle starter system	–	–	●	●	●
Steering wheel: Urethane comfort grip with mounted cruise and audio controls	●	●	–	–	–
Leather-wrapped with mounted cruise and audio controls	–	–	●	●	●
Heated	–	–	–	–	●
Universal Home Remote: 3-channel programmable, includes garage door opener	–	–	○ ⁶	●	●
Windows: Power, with driver express-down	●	●	●	●	–
Power, with driver express-up/-down and passenger express-down	–	–	–	○ ¹	●
SEATING					
8-passenger: Second- and third-row flat-folding 60/40 split-bench seats	●	●	●	○ ⁷	–
7-passenger: Second-row flat-folding captain's chairs and third-row flat-folding 60/40 split-bench seat	–	–	○	●	●
Heated seats: Driver and front passenger	–	–	○ ⁸	●	–

	LS BASE	LS	1LT	2LT	PREMIER
SEATING (CONTINUED)					
Heated and cooled seats: Driver and front passenger	–	–	–	–	●
Premium Cloth	●	●	●	●	–
Leather-appointed first and second rows (perforated inserts on Premier)	–	–	–	○	●
Manual-adjustable driver seat: 4-way with manual lumbar control	●	●	–	–	–
Manual-adjustable front passenger seat: 2-way with manual recline	●	●	●	●	–
Power-adjustable driver seat: 8-way with power recline and lumbar control (2-position memory for driver seat and outside mirrors on Premier)	–	○	●	●	●
Power-adjustable front passenger seat: 8-way with power recline and lumbar control	–	–	–	○ ¹	●
ENTERTAINMENT					
AM/FM radio with 6.5-inch diagonal color touch-screen display, CD player and auxiliary input jack	●	–	–	–	–
AM/FM radio with 6.5-inch diagonal color touch-screen display, CD player, auxiliary input jack and SiriusXM Satellite Radio ⁹ All Access Package with 3-month trial subscription	–	●	●	–	–
Chevrolet MyLink ¹⁰ Radio: 6.5-inch diagonal color touch-screen display, AM/FM radio, CD player, SiriusXM Satellite Radio ⁹ All Access Package with 3-month trial subscription, Bluetooth ¹¹ audio streaming ¹¹ for music, hands-free smartphone integration, voice-activated technology for music and phone, Siri Eyes Free ¹² and Text Message Alerts ¹³	–	–	○ ⁶	●	–
Chevrolet MyLink ^{10,14} Radio with Navigation: Includes Chevrolet MyLink Radio features plus GPS navigation system and SiriusXM NavTraffic ⁹ and Local Forecast weather with 3-month trial subscription	–	–	–	○ ¹⁵	●

¹ Requires available Leather and Driver Confidence Package. ² Requires available Graphite Edition. ³ A NOTE ON CHILD SAFETY: Always use safety belts and the correct restraint for your child's age and size, even with air bags. Even in vehicles equipped with the Passenger Sensing System, children are safer when properly secured in a rear seat in the appropriate infant, child or booster seat. Never place a rear-facing infant restraint in the front seat of any vehicle equipped with an active frontal air bag. See the Owner's Manual and the child safety seat instructions for more safety information. ⁴ Requires available 8-way power driver seat. ⁵ Requires available Traveler's Package. ⁶ Requires available Style and Technology Package. ⁷ Not available with leather-appointed Ebony/Saddle Up interior color. ⁸ Included when available Style and Technology Package is ordered. ⁹ If you decide to continue service after your trial, the subscription plan you choose will automatically renew thereafter and you will be charged according to your chosen payment method at then-current rates. Fees and taxes apply. To cancel you must call SiriusXM at 1-866-635-2349. See SiriusXM Customer Agreement for complete terms at siriusxm.com. All fees and programming subject to change. For more information about NavTraffic, visit siriusxm.com/navtraffic. For more information about Travel Link, visit siriusxm.com/travellink. ¹⁰ MyLink functionality varies by model. Full functionality requires compatible Bluetooth and smartphone, and USB connectivity for some devices. ¹¹ Go to my.chevrolet.com/learn to find out which phones are compatible with the vehicle. ¹² Requires available Chevrolet MyLink and compatible iPhone running iOS 6 or later. ¹³ Visit my.chevrolet.com/learn for vehicle and smartphone eligibility. ¹⁴ Map coverage available in the United States, Puerto Rico and Canada. ¹⁵ Requires available Rear Seat Entertainment System or Graphite Edition.

SPECIFICATIONS (CONTINUED)

● STANDARD ○ AVAILABLE – NOT AVAILABLE

	LS BASE	LS	1LT	2LT	PREMIER
ENTERTAINMENT (CONTINUED)					
10-speaker Bose® premium sound system	–	–	–	● ¹	● ¹
Rear-Seat Entertainment System: Rear-seat DVD player with remote control, overhead display, two 2-channel wireless infrared headphones, auxiliary audio/video input jacks and 120-volt, three-prong, household-style power outlet; includes 10-speaker Bose premium 5.1 surround sound system	–	–	○ ²	○ ³	○
OnStar Basic Plan ⁴ for five years includes select features of the myChevrolet Mobile App ⁵ including remote start, door lock or unlock, honk your horn and flash your lights, and send destinations to your Chevrolet MyLink ^{6,7} navigation screen (if equipped). Limited OnStar services include Advanced Diagnostics and Dealer Maintenance Notification	●	●	●	●	●
OnStar 4G LTE and built-in Wi-Fi ⁸ hotspot ⁹ for up to seven devices, includes data trial for 3 months or 3 GB (whichever comes first)	●	●	●	●	●
WHEELS					
17" steel with painted wheel covers	●	●	–	–	–
18" machined-aluminum	–	○	●	●	–
20" painted-aluminum	–	–	○ ⁹	–	–
20" Dark Charcoal Metallic-painted	–	–	–	○ ¹⁰	–
20" machined-aluminum	–	–	–	–	●

	LS BASE	LS	1LT	2LT	PREMIER
PACKAGES					
Style and Technology Package: Heated front seats, Universal Home Remote, Chevrolet MyLink ⁶ Radio, 20" painted-aluminum wheels and variable-effort power steering	–	–	○	–	–
Traveler's Package: Rear-Seat Entertainment System with all features listed above, tri-zone automatic climate controls and additional 9 months of SiriusXM Satellite Radio ¹¹ All Access Package	–	–	○	–	–
Leather and Driver Confidence Package: Leather-appointed seating on first and second rows, 8-way power passenger seat with power recline and lumbar control, 2-position memory for driver seat and outside mirrors, Side Blind Zone Alert and Rear Cross Traffic Alert, power windows with driver express-up/-down and passenger express-down, outside heated power-adjustable and power-folding body-color mirrors with integrated turn signal indicators and driver-side auto-dimming feature	–	–	–	○	–
Graphite Edition: Black front and rear bowtie emblems, 20" Dark Charcoal Metallic-painted wheels, integrated assist steps, and dual exhaust with bright tips	–	–	–	○ ¹²	–

¹ Upgraded to 5.1 surround sound with available Rear-Seat Entertainment System. ² Requires available Traveler's Package. ³ Includes Chevrolet MyLink Radio with Navigation. ⁴ Does not include emergency or security services. Visit onstar.com for coverage map, details and system limitations. ⁵ Requires active OnStar service, compatible device, factory-installed remote start and power locks. Data rates apply. Visit onstar.com for details and system limitations. ⁶ MyLink functionality varies by model. Full functionality requires compatible Bluetooth and smartphone, and USB connectivity for some devices. ⁷ Map coverage available in the United States, Puerto Rico and Canada. ⁸ Requires a compatible mobile device, active OnStar service and data plan. 4G LTE service available in select markets. Visit onstar.com for coverage map, details and system limitations. Data plans provided by AT&T. ⁹ Requires available Style and Technology Package. ¹⁰ Requires available Graphite Edition. ¹¹ If you decide to continue service after your trial, the subscription plan you choose will automatically renew thereafter and you will be charged according to your chosen payment method at then-current rates. Fees and taxes apply. To cancel you must call SiriusXM at 1-866-635-2349. See SiriusXM Customer Agreement for complete terms at siriusxm.com. All fees and programming subject to change. For more information about NavTraffic, visit siriusxm.com/navtraffic. For more information about Travel Link, visit siriusxm.com/travellink. ¹² Also includes Chevrolet MyLink Radio with Navigation and Trailering equipment. Requires Leather and Driver Confidence Package, Ebony interior color, and Mosaic Black Metallic, Tungsten Metallic, Siren Red Tintcoat or Iridescent Pearl Tricoat exterior color.



Experience Chevrolet Complete Care, a comprehensive coverage, warranty and protection program that comes standard with every new 2017 Chevrolet Traverse lease and purchase. Simply, it is designed around you, to make it easy to keep your Chevrolet like new – and give you the confidence you deserve when you need it most.

YOUR COMPREHENSIVE OWNER BENEFIT PROGRAM.

Includes two maintenance visits (oil and filter changes, tire rotations and multipoint vehicle inspections)¹

5 years/60,000 miles of Roadside Assistance and Courtesy Transportation²

5-year/60,000-mile Powertrain Limited Warranty³

3-year/36,000-mile Bumper-to-Bumper Warranty²

6 years/100,000 miles of Rust-Through Protection²

5 years of OnStar Basic Plan³ including select features of the myChevrolet Mobile App⁴

3 months of OnStar Guidance Plan⁵

DIMENSIONS

Width	78.5"
Front Track	67.3"
Rear Track	67.1"

Length	203.7"
Wheelbase	118.9"
Height	69.9"

MAXIMUM CAPACITIES

EPA-ESTIMATED FUEL ECONOMY	
FWD	15 MPG city/22 highway/18 combined
AWD	15 MPG city/22 highway/17 combined

FUEL TANK (APPROXIMATE)	22 gallons
TRAILER WEIGHT RATING ⁶	5,200 lbs.
SEATING	Seats 7/8
CARGO VOLUME ⁷ (CUBIC FEET)	Behind third-row seat: 24.4 Behind second-row seat: 70.3 Behind first-row seats: 116.3

OWNERSHIP EXTRAS



CHEVROLET.COM/WARRANTY



CHEVROLET.COM/ACCESSORIES



ONSTAR.COM



SIRIUSXM.COM

NEW VEHICLE LIMITED WARRANTY

5-YEAR/60,000-MILE TRANSFERABLE POWERTRAIN LIMITED WARRANTY Every 2017 Chevrolet Traverse comes with a 5-year/60,000-mile (whichever comes first) transferable Powertrain Limited Warranty. 24/7 Roadside Assistance and Courtesy Transportation are also offered for the duration of the Powertrain Limited Warranty. Please see your Chevrolet dealer for details.

3-YEAR/36,000-MILE BUMPER-TO-BUMPER LIMITED WARRANTY Chevrolet will warrant each 2017 Traverse from bumper to bumper for 3 years/36,000 miles (whichever comes first; see dealer for details), with no deductible from the original in-service date of the vehicle, for warrantable repairs that are required as a result of defects due to materials and/or workmanship. Cosmetic corrosion resulting from defects is also covered under the Bumper-to-Bumper Limited Warranty. In addition, rust-through corrosion will be covered for 6 years/100,000 miles (whichever comes first). See dealer for details.

¹ Maintenance visits must occur within two years or 24,000 miles of vehicle delivery, whichever comes first. Does not include air filters. See participating dealer for other restrictions and complete details. ² Whichever comes first. See dealer for details. ³ Does not include emergency or security services. Visit onstar.com for coverage map, details and system limitations. ⁴ Requires active OnStar service, compatible device, factory-installed remote start and power locks. Data rates apply. Visit onstar.com for details and system limitations. ⁵ Visit onstar.com for coverage map, details and system limitations. ⁶ Before you buy a vehicle or use it for trailering, carefully review the Trailering section of the Owner's Manual. The weight of passengers, cargo and options or accessories may reduce the amount you can tow. ⁷ Cargo and load capacity limited by weight and distribution.

IMPORTANT INFORMATION

CHEVROLET OWNER CENTER (MY.CHEVROLET.COM) Everything you need to know. Anything you need to do. Your Chevrolet Owner Center makes it easy. Create your account today to get the most out of your new vehicle. Get special alerts and offers, schedule service, review your maintenance schedule, and view how-to videos specifically for your vehicle. All online, anytime. Visit the Owner Center today to register or take a tour.

ENGINES Chevrolet products are equipped with engines produced by GM Powertrain or other suppliers to GM worldwide. The engines in Chevrolet products may also be used in other GM makes and models.

ASSEMBLY Chevrolet vehicles and their components are assembled or produced by different operating units of General Motors, its subsidiaries or suppliers to GM worldwide. We sometimes find it necessary to produce Chevrolet vehicles with different or differently sourced components than originally scheduled. Since some options may be unavailable when your vehicle is assembled, we suggest you verify that your vehicle includes the equipment you ordered and that, if there were changes, they are acceptable to you.

ONSTAR OnStar services require vehicle electrical system (including battery), wireless service and GPS satellite signals to be available and operating for features to function properly. OnStar acts as a link to existing emergency service providers. Subscription Service Agreement required. Call 1.888.4ONSTAR (1-888-466-7827) or visit onstar.com for OnStar Terms and Conditions, Privacy Policy, details and system limitations.

A NOTE ON CHILD SAFETY Always use safety belts and the correct restraint for your child's age and size, even with air bags. Even in vehicles equipped with the Passenger Sensing System, children are safer when properly secured in a rear seat in the appropriate infant, child or booster seat. Never place a rear-facing infant restraint in the front seat of any vehicle equipped with an active frontal air bag. See the Owner's Manual and the child safety seat instructions for more safety information.

IMPORTANT WORDS ABOUT THIS CATALOG We have tried to make this catalog comprehensive and factual. We reserve the right, however, to make changes at any time, without notice, in prices, colors, materials, equipment, specifications, models and availability. Specifications, dimensions, measurements, ratings and other numbers in this catalog and other printed

materials provided at the dealership or affixed to vehicles are approximations based on design and engineering drawings, prototypes and laboratory tests. Your vehicle may differ due to variations in manufacture and equipment. Since some information may have been updated since the time of printing, please check with your Chevrolet dealer for complete details. Chevrolet reserves the right to lengthen or shorten the model year for any product for any reason or to start and end model years at different times. Certain vehicle features may lose their usefulness over time due to obsolescence from technological changes. Unless otherwise noted, all claims based on GM Mid SUV-Crossover segment and latest available competitive information. Excludes other GM vehicles.

FLEET ORDERS Some standard content may be deleted on fleet orders. See dealer for details.

CHEVROLET OWNERSHIP EXPERIENCE Chevrolet is committed to enhancing the vehicle shopping and ownership experience through a wide array of programs. Visit chevrolet.com to build and price, find a vehicle, request a quote, compare vehicles, find financial tools or track your vehicle order. You'll also find information about 24-hour Roadside Assistance, Courtesy Transportation, Customer Assistance, GM Mobility, safety and current incentives.

CHEVROLET.COM/SAFETY Chevrolet is committed to keeping you and your family safe – from the start of your journey to your destination. That's why every Chevrolet is designed with a comprehensive list of safety and security features to help give you peace of mind.

GMMOBILITY.COM (1-800-323-9935) GM Mobility™ offers financial assistance for eligible adaptive equipment to make automotive travel easier for persons with disabilities or special transportation needs. To learn more about special GM Mobility offers, visit gmmobility.com.

THE BUYPOWER CARD The Chevrolet BuyPower Card – Every purchase you make with the BuyPower Card from Capital One* helps you earn toward an eligible new Chevrolet, Buick, GMC or Cadillac vehicle. There's no limit on the amount you can earn or redeem, and your Earnings don't expire. Visit chevroletbuypowercard.com/catalogs.

* Capital One, N.A. is the issuer of the BuyPower Card. General Motors ("GM") is responsible for the operation and administration of the Earnings program.



TWITTER.COM/CHEVROLET



YOUTUBE.COM/CHEVROLET



FACEBOOK.COM/CHEVROLET

GM, the GM logo, Chevrolet, the Chevrolet logo, and the slogans, emblems, vehicle model names, vehicle body designs and other marks appearing in this catalog are the trademarks and/or service marks of General Motors, its subsidiaries, affiliates or licensors. ©2016 OnStar. All rights reserved. Sirius, XM, SiriusXM and all related marks and logos are trademarks of Sirius XM Radio Inc. The Bluetooth word mark is a registered trademark owned by Bluetooth SIG, Inc., and any use of such mark by Chevrolet is under license. Bose is a registered trademark of the Bose Corp.

©2016 General Motors. All rights reserved. June 2016



FIND NEW ROADS™

CHEVROLET.COM