

TRAX 2019

CHEVROLET



Trax Premier with available Midnight Edition in Mosaic Black Metallic.



EVERYTHING YOU NEED TO TAKE ON THE CITY.

Keep on rolling. Don't let crowds, traffic or weather dampen your spirit. When you're driving the 2019 Chevrolet Trax, you own the city. That means easily slipping in and out of tight parking spots, while taking up to five adults to catch dinner or a show.

Trax also embraces your eclectic tastes. So it will accommodate the sculpture you couldn't resist at the art fair or the 8-foot ladder from the hardware store with the front passenger seat folded down.

Of course, you don't do the city without sound. So there's Apple CarPlay^{®1} or Android Auto^{™2} compatibility to keep you in tune.

Trax, the small SUV that's as versatile as you are, is ready to take on the demands of the city – and your life.

1 Vehicle user interface is a product of Apple and its terms and privacy statements apply. Requires compatible iPhone and data plan rates apply. 2 Vehicle user interface is a product of Google and its terms and privacy statements apply. Requires the Android Auto app on Google Play and an Android compatible smartphone running Android 5.0 Lollipop or higher. Data plan rates apply.

FIND NEW ROADS™

EXTERIOR DESIGN



Trax Premier in Storm Blue Metallic.

DRESSED FOR A DAY IN THE CITY.

Trax has a sculpted body with a chrome-accented dual-port grille and an integrated headlamp design. Available bright-finished door handles and rear liftgate help elevate

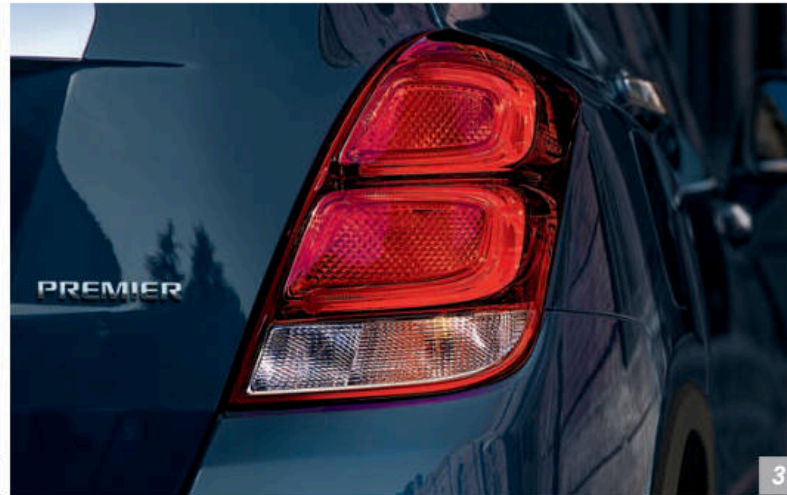
the overall look. The rearward-swept roofline is accentuated with bright-finished roof rack rails on LT and Premier, and bright-finished beltline moldings are also standard on those models.



1. LIGHT UP THE ROAD. LED signature daytime running lamps and projector-style halogen headlamps are standard on LT and Premier.



2. STYLISH FOOTWEAR. 18-inch aluminum wheels with all-season tires are standard on Premier.



3. A GRACEFUL DEPARTURE. LED signature taillamps contribute to a sporty look and are standard on LT and Premier.



INTERIOR DESIGN

A COMMANDING VIEW. The thoughtfully designed interior is as comfortable as it is stylish. Seats with contrast stitching prove that details matter. Chase chills away with heated driver and front passenger seats, standard on Premier.

DUAL-COCKPIT DESIGN. The Trax instrument panel is designed for attractive symmetry. Controls are simple and intuitive. True White backlighting contributes to a purposeful appearance.

PREMIUM SOFT TOUCHES. Many of the tactile surfaces feature soft touch materials that provide a rich, compliant feel. Piano Black accents complement the overall interior environment.

Trax Premier interior
in Jet Black.

1. SIMPLE YET ELEGANT. The instrument panel design and driver display features a sporty circular gauge cluster with an analog speedometer and tachometer. The Driver Information Center gives you a read on tire pressure for all four tires, oil life, fuel range and more.

2. NO FUMBLING WITH KEYS.

Your morning balancing act of keys and coffee just got easier. Keyless Open and Start is standard on Premier and available on LT.

3. ROOM FOR FIVE. Spacious 5-passenger seating gives you and your passengers plenty of leg, shoulder and elbow room.





ROOM WHEN YOU NEED IT MOST.

There's 48.4 cu. ft¹ of cargo space with the rear seats folded down and even more versatility with the fold-flat front passenger seat – enough room to carry items up to eight feet long.

FOLD DOWN AND LOAD IN. Flexibility is a virtue of the modern Trax design. With a 60/40 split-folding rear seat and a fold-flat front passenger seat, you have eight different ways to carry passengers and other precious cargo.

¹ Cargo and load capacity limited by weight and distribution.



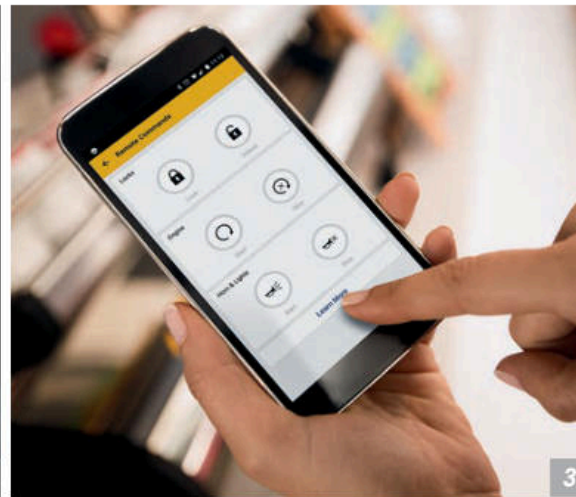
Apple CarPlay® COMPATIBILITY!

With Apple CarPlay, you can simply and smartly connect with some of your most used iPhone® features, including Maps, Music, Messages and Phone, right on your touch-screen display.

Wi-Fi IN YOUR TRAX. Chevrolet offers available built-in 4G LTE Wi-Fi² that provides a better in-vehicle experience than your smartphone. Our strong signal means you have a fast and reliable connection for up to seven devices.

¹ Vehicle user interface is a product of Apple and its terms and privacy statements apply. Requires compatible iPhone and data plan rates apply. ² Service varies with conditions and location. Requires active OnStar service and paid AT&T data plan. Visit onstar.com for details and limitations.

Apple CarPlay and iPhone are trademarks of Apple Inc., registered in the U.S. and other countries.



1. ANDROID AUTO COMPATIBILITY.

You can quickly and intuitively interact with select smartphone apps with support for Android Auto.¹ This system takes some of your compatible Android™ phone's features and lets you access them on the touch-screen display. You can access your phone, text messages, music, navigation and more.

2. STAY CHARGED UP.

Trax makes it easy to conveniently charge your compatible devices with a standard auxiliary 12-volt power outlet and two USB ports.² A standard 110-volt power outlet on LT and Premier helps you remain plugged in to what's important.

3. myChevrolet Mobile App.³

Simply download the app to your compatible smartphone and if your vehicle is properly equipped, you can start or turn off your engine, lock or unlock your doors⁴ (requires paid subscription after trial), send destinations to your available navigation⁵ system, view key vehicle diagnostic information, set parking reminders and more. Requires available Remote Access Plan.⁶

¹ Vehicle user interface is a product of Google and its terms and privacy statements apply. Requires the Android Auto app on Google Play and an Android compatible smartphone running Android 5.0 Lollipop or higher. Data plan rates apply. ² Not compatible with all devices. ³ Available on select Apple and Android devices. Service availability, features and functionality vary by vehicle, device and the plan you are enrolled in. Device data connection required. ⁴ Requires paid subscription. Services are subject to User Terms and limitations. ⁵ Send-to-Navigation requires subscription. Service varies by vehicle model. Map coverage available in the United States, Puerto Rico and Canada. ⁶ Remote Access Plan does not include emergency or security services. Visit onstar.com for details and limitations.

Android, Android Auto, Google, Google Play and other marks are trademarks of Google LLC.

SAFETY



SAFETY STARTS WITH YOU. Safety or driver assistance features are no substitute for the driver's responsibility to operate the vehicle in a safe manner. The driver should remain attentive to traffic, surroundings and road conditions at all times. Visibility, weather and road conditions may affect feature performance. Read the vehicle Owner's Manual for more important feature limitations and information.

ADVANCED SAFETY TECHNOLOGY HELPS YOU COVER THE ANGLES.



FORWARD COLLISION ALERT. This available feature monitors how close your vehicle is to the vehicle in front of you. If the system determines that a front-end collision with a detected vehicle is imminent, it can alert the driver to a potential crash. It also can warn the driver if their Trax is following a detected vehicle much too closely.



LANE DEPARTURE WARNING. If you unintentionally drift out of your lane without using a turn signal, this available camera-based system can send an alert. The system reads traffic lane markings when identifiable and provides audible and visual alerts.



SIDE BLIND ZONE ALERT. With radar sensors on both sides of the vehicle, available Side Blind Zone Alert helps to warn you when vehicles are in your side mirror blind zones and indicates their presence with LED-lit symbols in the exterior mirrors.



REAR CROSS TRAFFIC ALERT. This available feature alerts you to crossing vehicles behind your Trax when backing up. Audible warnings, as well as visual alerts on the rear vision camera screen, are triggered if approaching vehicles are detected.



REAR VISION CAMERA. When traveling in Reverse at low speeds, the standard rear vision camera helps provide a real-time view of the area immediately behind your Trax on the touch-screen display.



REAR PARK ASSIST. This available feature helps you when backing up by sounding an audible alert and providing visual indication on the rear vision camera display when it detects certain stationary objects in close proximity behind the vehicle.



10 STANDARD AIRBAGS! Every Trax includes frontal and knee airbags for driver and front passenger, and seat-mounted side-impact and head-curtain airbags for all outboard seating positions.

ONSTAR AUTOMATIC CRASH RESPONSE? In a crash, built-in sensors can automatically connect you to a specially trained, Emergency Medical Dispatch-certified Advisor³ who can help you get the assistance you need – even if you can't ask for it. Advisors can use GPS technology to pinpoint your location and request emergency help. OnStar Automatic Crash Response is included in the available OnStar Safety & Security Plan⁴

¹ A NOTE ON CHILD SAFETY: Always use seat belts and the correct child restraint for your child's age and size, even with airbags. Even in vehicles equipped with the Passenger Sensing System, children are safer when properly secured in a rear seat in the appropriate infant, child or booster seat. Never place a rear-facing infant restraint in the front seat of any vehicle equipped with an active frontal airbag. See your vehicle Owner's Manual and the child safety seat instructions for more safety information. ² OnStar plan, working electrical system, cell service and GPS signal required. OnStar links to emergency services. ³ OnStar Advisors are certified by the International Academies of Emergency Dispatch. ⁴ Visit onstar.com for system limitations and details. OnStar plan, working electrical system, cell service and GPS signal required. OnStar links to emergency services.

PERFORMANCE

DRIVE LIKE YOU BELONG HERE.



Trax Premier in Silver Ice Metallic.

BE WHERE YOU WANT TO BE.

The 138-horsepower ECOTEC® 1.4L turbocharged engine paired with an electronically controlled 6-speed automatic transmission lays down 148 lb.-ft. of torque to give you the kind of response you need in tight quarters.

SMILE WHEN YOU PASS THE PUMPS.

Efficient and exciting are not mutually exclusive ideas. Trax front-wheel-drive (FWD) models offer a remarkable 26 MPG city and 31 MPG highway.¹ This can mean fewer stops at the gas station. And really, don't you have a function to get to?

AVAILABLE AWD ADDS CONFIDENCE.

Responsive and agile, Trax makes it easy to navigate city streets. FWD with Electronic Traction Control is standard. For even more sure-footed traction, the available all-wheel-drive (AWD) system engages automatically when

accelerating from a standing start. The system shifts back to FWD mode when it detects there is no more wheel slip. Trax AWD also offers a smooth-going 24 MPG city and 29 MPG highway.¹

¹EPA-estimated 26 MPG city/31 highway (FWD), 24 MPG city/29 highway (available AWD).

SPECIAL FEATURES



Trax Redline Edition, shown in Silver Ice Metallic, includes Black Chevrolet bowties, Black Trax badge with Red outline, 18" Black-finish aluminum wheels with Red accents, and Black mirror caps, beltline moldings, grille and grille surround. Available on LT.



Side Blind Zone Alert¹, standard on Premier and available on LT with the Driver Confidence Package.



All-wheel drive available on all models.



Trax LT in Summit White with available 18" Midnight Silver-painted aluminum wheels.

¹ Read the vehicle Owner's Manual for important feature limitations and information.

WHEELS



16" Steel with Painted Wheel Cover
(Standard on LS FWD¹)



16" Painted-Aluminum
(Standard on LS AWD² and LT)



18" Midnight Silver-Painted Aluminum
(Available on LT)



18" Black-Finish Aluminum with Red Accent Stripes
(Available on LT with Redline Edition)



18" Black-Painted Alloy
(Available on Premier with Midnight Edition)



18" Aluminum (Standard on Premier)

¹ Limited availability. ² Standard on AWD models. Late availability for FWD models.

COLORS



SUMMIT WHITE



SILVER ICE METALLIC¹



NIGHTFALL GRAY METALLIC



SANDY RIDGE METALLIC



CAJUN RED TINTCOAT^{2,3}



DARK COPPER METALLIC^{2,4}



PACIFIC BLUE METALLIC²



STORM BLUE METALLIC



SATIN STEEL METALLIC^{1,5,6}



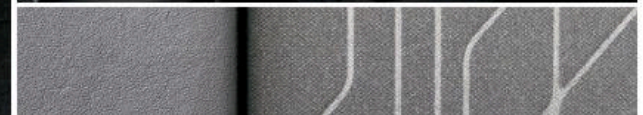
MOSAIC BLACK METALLIC

¹ Not available with Brandy/Jet Black interior. ² Not available on LS. ³ Extra-cost color. ⁴ Late availability. ⁵ Available on LT with LT Convenience Package. ⁶ Not available with Light Ash Gray/Jet Black interior.

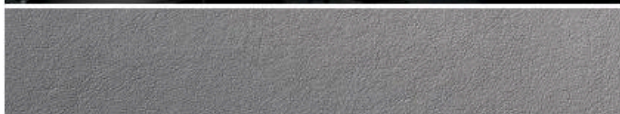
FABRICS



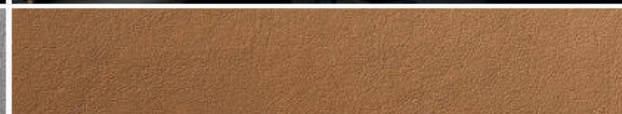
Jet Black Leatherette with Jet Black Accents¹



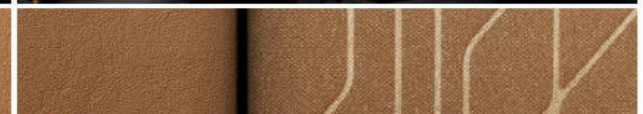
Light Ash Gray Deluxe Cloth and Leatherette with Jet Black Accents²



Light Ash Gray Leatherette with Jet Black Accents¹



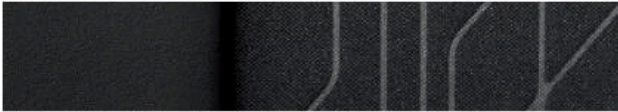
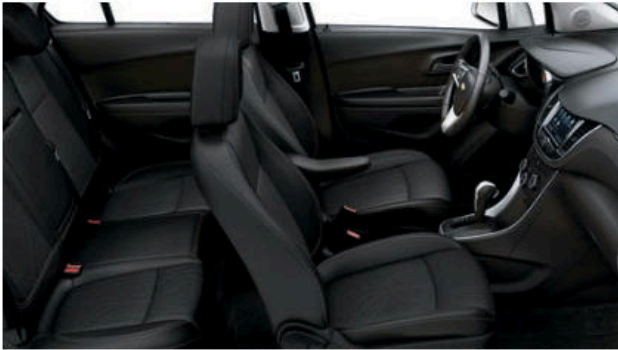
Brandy Leatherette with Jet Black Accents¹



Brandy Deluxe Cloth and Leatherette with Jet Black Accents²

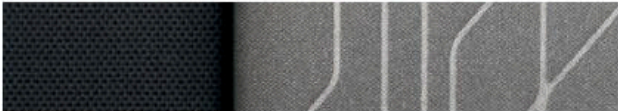
¹ Standard on Premier. ² Available on LT with LT Convenience Package.

FABRICS (CONTINUED)



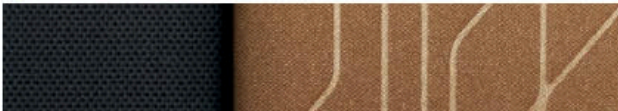
Jet Black Deluxe Cloth and Leatherette with Jet Black Accents^{1,2}

Jet Black Deluxe Cloth with Jet Black Accents³



Light Ash Gray Deluxe Cloth with Jet Black Accents³

Light Ash Gray Cloth with Jet Black Accents⁴



Brandy Deluxe Cloth with Jet Black Accents³

Jet Black Cloth with Jet Black Accents⁴

¹ Available on LT with LT Convenience Package. ² Included with available Redline Edition on LT. ³ Standard on LT. ⁴ Standard on LS.

SELECT VEHICLE FEATURES

TRAX LS

ECOTEC 1.4L turbocharged DOHC 4-cylinder engine
6-speed automatic transmission
4-wheel antilock front disc/rear drum brakes (FWD models)
4-wheel antilock disc brakes (AWD models)
10 airbags ¹ including driver and front passenger frontal and knee, seat-mounted side-impact and roof rail-mounted head-curtain for all outboard seating positions, and Passenger Sensing System for front passenger
OnStar Safety & Security Plan ² with 1-month coverage, including Automatic Crash Response, Emergency Services, Stolen Vehicle Assistance, Roadside Assistance and Turn-by-Turn Navigation
StabiliTrak [®] Electronic Stability Control System with Traction Control
Theft-deterrent system
Rear vision camera ³
Halogen reflector headlamps with automatic exterior lamp control
Daytime running lamps
Outside power-adjustable manual-folding body-color mirrors with Black base
Black beltline moldings
Body-color door handles
Chevrolet Infotainment 3 System ⁴ with 7-inch diagonal color touch-screen, AM/FM stereo, Bluetooth [®] audio streaming ⁵ for two active devices, voice command pass-through to compatible phone, and Apple CarPlay ^{®6} and Android Auto ^{™7} compatibility
Two USB ports ⁸ and auxiliary input jack
6-speaker sound system
Steering wheel-mounted audio and phone interface controls
Driver Information Center with 3.5-inch diagonal monochromatic display
Single-zone manual climate control with air conditioning
Power windows with driver express-up/-down and passenger express-down
Power-programmable door locks with lockout protection
Remote Keyless Entry with panic alarm

TRAX LS (CONTINUED)

4-way manual driver-seat adjuster with power lumbar control
Front bucket seats with cloth seating
Fold-flat front passenger seat
60/40 split-bench folding rear seat
Auxiliary 12-volt power outlet
11 storage compartments
Cargo security cover, rigid, removable
Front and rear carpeted floor mats
Built-in 4G LTE Wi-Fi ^{®9} for up to seven devices, includes data trial for 1 month or 3 GB (whichever comes first)

TRAX LT In addition to or replacing LS features, LT includes:

LED daytime running lamps
Projector-style halogen headlamps with automatic exterior lamp control
LED taillamps
Outside heated power-adjustable manual-folding body-color mirrors
Chrome beltline moldings
Front and rear Silver-painted skid plates
Roof rack side rails
Deep-tinted rear windows and liftgate glass
16" aluminum wheels
SiriusXM [®] Radio ¹⁰ All Access Package with 3-month trial subscription
110-volt power outlet on rear of center console
Remote vehicle starter system
Cruise control
Front passenger underseat storage drawer
Deluxe Cloth seating

TRAX PREMIER In addition to or replacing LT features, Premier includes:

Forward Collision Alert ³
Lane Departure Warning ³
Side Blind Zone Alert ³
Rear Cross Traffic Alert ³
Rear Park Assist ³
Foglamps
Body-color door handles with chrome accent
Chrome liftgate accents
Bright sill plate covers
18" aluminum wheels
Power sunroof
Keyless Open and Start
7-speaker Bose [®] premium audio system, including RichBass [™] woofer
Inside rearview auto-dimming mirror
6-way power driver-seat adjuster with power lumbar control
Heated driver and front passenger seats
Leather-wrapped 3-spoke steering wheel
Leatherette seating

1 A NOTE ON CHILD SAFETY: Always use seat belts and the correct child restraint for your child's age and size, even with airbags. Even in vehicles equipped with the Passenger Sensing System, children are safer when properly secured in a rear seat in the appropriate infant, child or booster seat. Never place a rear-facing infant restraint in the front seat of any vehicle equipped with an active frontal airbag. See your vehicle Owner's Manual and the child safety seat instructions for more safety information. **2** Visit onstar.com for limitations and details. OnStar plan, working electrical system, cell service and GPS signal required. OnStar links to emergency services. Roadside service provided by Allstate Roadside Services. Stolen Vehicle Assistance requires armed factory-installed theft-deterrent system. **3** Read the vehicle Owner's Manual for important feature limitations and information. **4** Chevrolet Infotainment System functionality varies by model. Full functionality requires compatible Bluetooth and smartphone, and USB connectivity for some devices. **5** Visit my.chevrolet.com/learn for vehicle and smartphone compatibility. **6** Vehicle user interface is a product of Apple and its terms and privacy statements apply. Requires compatible iPhone and data plan rates apply. **7** Vehicle user interface is a product of Google and its terms and privacy statements apply. Requires the Android Auto app on Google Play and an Android compatible smartphone running Android 5.0 Lollipop or higher. Data plan rates apply. **8** Not compatible with all devices. **9** Service varies with conditions and location. Requires active OnStar service and paid AT&T data plan. Visit onstar.com for details and limitations. **10** If you decide to continue service after your trial, the subscription plan you choose will automatically renew thereafter and you will be charged according to your chosen payment method at then-current rates. Fees and taxes apply. To cancel you must call SiriusXM at 1-866-635-2349. See SiriusXM Customer Agreement for complete terms at siriusxm.com. All fees and programming subject to change.

SPECIFICATIONS

● STANDARD ○ AVAILABLE – NOT AVAILABLE

	LS	LT	PREMIER
EXTERIOR			
Door handles: Body-color	●	●	–
Body-color with chrome accent	–	○ ¹	●
Foglamps	–	–	●
Headlamps: Halogen composite	●	–	–
Halogen projector-style	–	●	●
Automatic exterior lamp control	●	●	●
Mirrors: Power-adjustable, manual-folding, body-color with Black base	●	–	–
Heated, power-adjustable, manual-folding, body-color	–	●	●
Front and rear Silver-painted skid plates	–	●	●
ENGINE/CHASSIS			
Engine: ECOTEC 1.4L turbocharged 4-cylinder; 138 hp @ 4900 rpm, 148 lb.-ft. of torque @ 1850 rpm	●	●	●
Transmission: 6-speed automatic	●	●	●
All-wheel drive	○	○	○
SAFETY & SECURITY			
10 airbags: ² Driver and front passenger frontal and knee, seat-mounted side-impact and roof rail-mounted head-curtain for all outboard seating positions, and Passenger Sensing System for front passenger	●	●	●
LATCH (Lower Anchors and Tethers for Children) for child safety seats	●	●	●
OnStar Safety & Security Plan ³ with 1-month coverage, including Automatic Crash Response, Emergency Services, Stolen Vehicle Assistance, Roadside Assistance and Turn-by-Turn Navigation	●	●	●
Rear Park Assist ⁴	–	○ ⁵	●
Rear vision camera ⁴	●	●	●
Side Blind Zone Alert ⁴	–	○ ⁵	●
Rear Cross Traffic Alert ⁴	–	○ ⁵	●
Forward Collision Alert ⁴	–	–	●
Lane Departure Warning ⁴	–	–	●

	LS	LT	PREMIER
INTERIOR			
Keyless Open and Start	–	○ ¹	●
Mirror: Rearview, manual day/night	●	●	–
Auto-dimming	–	–	●
Remote Keyless Entry with panic alarm	●	●	–
Remote vehicle starter system	–	●	●
Steering column: Tilt and telescopic	●	●	●
Steering wheel: 3-spoke with mounted audio and phone interface controls	●	–	–
3-spoke with mounted cruise, audio and phone interface controls	–	●	–
3-spoke leather-wrapped with mounted cruise, audio and phone interface controls	–	○ ¹	●
Sunroof: Power, tilt/sliding	–	○ ⁵	●
ENTERTAINMENT			
Chevrolet Infotainment 3 System ⁷ with 7-inch diagonal color touch-screen, AM/FM stereo, Bluetooth [®] audio streaming ⁸ for two active devices, voice command pass-through to compatible phone, and Apple CarPlay ^{®9} and Android Auto ^{™10} compatibility	●	●	●
Bluetooth audio streaming ⁸ for select phones	●	●	●
Two USB ports ¹¹ and auxiliary input jack	●	●	●
SiriusXM [®] Radio ¹² All Access Package with 3-month trial subscription	–	●	●
6-speaker sound system	●	●	–
7-speaker Bose [®] premium audio system, including RichBass [™] woofer	–	○ ⁶	●
Chevrolet Connected Access ¹³ including Vehicle Diagnostics and Chevrolet Smart Driver	●	●	●
Built-in 4G LTE Wi-Fi ^{®14} for up to seven devices, includes data trial for 1 month or 3 GB (whichever comes first)	●	●	●
SEATING			
Driver seat: 4-way manual	●	●	–
6-way power	–	○ ¹	●
Power lumbar control	●	●	●
Front passenger seat: Flat-folding seatback	●	●	●

	LS	LT	PREMIER
SEATING (CONTINUED)			
Seat trim: Cloth	●	–	–
Deluxe Cloth	–	●	–
Deluxe Cloth/Leatherette	–	○ ¹⁵	–
Leatherette	–	–	●
Heated seats: Driver and front passenger	–	–	●
Rear seat: 60/40 split-folding bench	●	●	●
WHEELS			
16" steel with painted wheel cover	● ¹⁶	–	–
16" painted-aluminum	○ ¹⁷	●	–
18" Midnight Silver-painted aluminum	–	○ ¹	–
18" Black-finish aluminum with Red accent stripes	–	○ ¹⁸	–
18" Black-painted alloy	–	–	○ ¹⁹
18" aluminum	–	–	●
PACKAGES			
Tint and Cruise Package: Cruise control and deep-tinted rear windows and liftgate glass	○	–	–
Driver Confidence Package: Side Blind Zone Alert ⁴ , Rear Cross Traffic Alert ⁴ and Rear Park Assist ⁴	–	○ ¹	●
LT Convenience Package: Keyless Open and Start, 6-way power driver-seat adjuster, leather-wrapped 3-spoke steering wheel, Deluxe Cloth/Leatherette seats and body-color door handles with chrome accent	–	○	–
Sun and Sound Package: 7-speaker Bose premium audio system, including RichBass woofer, and power sunroof	–	○ ¹	–
Redline Edition: 18" Black-finish aluminum wheels with Red accent stripes and P215/55R18 all-season blackwall tires; Black mirror caps, grille, grille surround, bowties and beltline moldings; Black Trax badge with Red outline; and Jet Black Deluxe Cloth/Leatherette seats (available with Silver Ice Metallic, Summit White and Mosaic Black Metallic exterior colors)	–	○ ¹	–
Midnight Edition: 18" Black-painted alloy wheels; Black beltline moldings, door handles, bowties and rear liftgate appliqué; two-tone leatherette seats in Black and Light Titanium; and Black floor mats with Silver-color serging (available exclusively in Mosaic Black Metallic exterior color)	–	–	○

¹ Requires available LT Convenience Package. ² A NOTE ON CHILD SAFETY: Always use seat belts and the correct child restraint for your child's age and size, even with airbags. Even in vehicles equipped with the Passenger Sensing System, children are safer when properly secured in a rear seat in the appropriate infant, child or booster seat. Never place a rear-facing infant restraint in the front seat of any vehicle equipped with an active frontal airbag. See your vehicle Owner's Manual and the child safety seat instructions for more safety information. ³ Visit onstar.com for limitations and details. OnStar plan, working electrical system, cell service and GPS signal required. OnStar links to emergency services. Roadside service provided by Allstate Roadside Services. Stolen Vehicle Assistance requires armed factory-installed theft-deterrent system. ⁴ Read the vehicle Owner's Manual for important feature limitations and information. ⁵ Requires available Driver Confidence Package. ⁶ Requires available Sun and Sound Package. ⁷ Chevrolet Infotainment System functionality varies by model. Full functionality requires compatible Bluetooth and smartphone, and USB connectivity for some devices. ⁸ Visit my.chevrolet.com/learn for vehicle and smartphone compatibility. ⁹ Vehicle user interface is a product of Apple and its terms and privacy statements apply. Requires compatible iPhone and data plan rates apply. ¹⁰ Vehicle user interface is a product of Google and its terms and privacy statements apply. Requires the Android Auto app on Google Play and an Android compatible smartphone running Android 5.0 Lollipop or higher. Data plan rates apply. ¹¹ Not compatible with all devices. ¹² If you decide to continue service after your trial, the subscription plan you choose will automatically renew thereafter and you will be charged according to your chosen payment method at then-current rates. Fees and taxes apply. To cancel you must call SiriusXM at 1-866-635-2349. See SiriusXM Customer Agreement for complete terms at siriusxm.com. All fees and programming subject to change. ¹³ Standard connectivity available only to original purchaser for 10 years. Connected Access services are subject to change. Does not include safety services. Visit onstar.com for details and plan limitations. ¹⁴ Service varies with conditions and location. Requires active OnStar service and paid AT&T data plan. Visit onstar.com for details and limitations. ¹⁵ Requires available LT Convenience Package. Included with available Redline Edition. ¹⁶ Limited availability. ¹⁷ Standard on AWD models. Late availability for FWD models. ¹⁸ Requires available Redline Edition. ¹⁹ Requires available Midnight Edition.



COMPLETE CARE

Experience Chevrolet Complete Care, a comprehensive coverage, warranty and protection program that comes standard with every new 2019 Chevrolet Trax lease and purchase. Simply, it is designed around you, to make it easy to keep your Chevrolet like new – and give you the confidence you deserve when you need it most.

YOUR COMPREHENSIVE OWNER BENEFIT PROGRAM.

Includes one maintenance visit (oil change, tire rotation and multi-point vehicle inspection)¹

5 years/60,000 miles of Roadside Assistance and Courtesy Transportation²

3-year/36,000-mile Bumper-to-Bumper Limited Warranty²

5-year/60,000-mile Powertrain Limited Warranty²

6 years/100,000 miles of Rust-Through Protection²

10 years of standard connectivity with Chevrolet Connected Access³

1-month trial of Chevrolet Connected Services⁴ and 1 month of OnStar Safety & Security Plan coverage.⁴

DIMENSIONS

Length	167.6"	Width	69.9"	Head Room (front/rear) ⁵	39.6"/38.8"
Wheelbase	100.6"	Front Track	60.6"	Leg Room (front/rear)	40.8"/35.7"
Height	65" (without roof rails) 66.5" (with roof rails)	Rear Track	60.6"	Shoulder Room (front/rear)	54.1"/52.5"

MAXIMUM CAPACITIES

EPA-ESTIMATED FUEL ECONOMY		FUEL TANK (APPROXIMATE)	14 gallons
1.4L turbocharged FWD	26 MPG city/31 highway/28 combined	PASSENGER VOLUME	92.8 cubic feet (91.6 cubic feet with sunroof)/seats 5
1.4L turbocharged AWD	24 MPG city/29 highway/26 combined	CARGO VOLUME⁶	18.7 cubic feet (rear seat up) 48.4 cubic feet (rear seat folded)

OWNERSHIP EXTRAS



CHEVROLET.COM/WARRANTY



CHEVROLET.COM/ACCESSORIES



ONSTAR.COM



SIRIUSXM.COM

NEW VEHICLE LIMITED WARRANTY

3-YEAR/36,000-MILE BUMPER-TO-BUMPER LIMITED WARRANTY Chevrolet will warrant each 2019 Trax from bumper to bumper for 3 years/36,000 miles (whichever comes first; see dealer for details), with no deductible, from the original in-service date of the vehicle, for warrantable repairs that are required as a result of defects due to materials and/or workmanship. Cosmetic corrosion resulting from defects is also covered under the Bumper-to-Bumper Limited Warranty. In addition, rust-through corrosion will be covered for 6 years/100,000 miles (whichever comes first). See dealer for details.

5-YEAR/60,000-MILE TRANSFERABLE POWERTRAIN LIMITED WARRANTY Every 2019 Trax comes with a 5-year/60,000-mile (whichever comes first) transferable Powertrain Limited Warranty. 24/7 Roadside Assistance and Courtesy Transportation are also offered for the duration of the Powertrain Limited Warranty. Please see your Chevrolet dealer for details.

¹ Maintenance visit must occur within first year of vehicle delivery. Service visit consists of ACDelco dexos1™ Full Synthetic Oil and Filter Change/Tire Rotation/MPVI. Does not include air filters. See participating dealer for other restrictions and complete details. ² Whichever comes first. See dealer for details. ³ Standard connectivity available only to original purchaser for 10 years. Connected Access services are subject to change. Does not include safety services. Visit onstar.com for details and plan limitations. ⁴ Connected Services include navigation services and Remote Access Plan, and 1 month/3 GB of 4G LTE data (whichever comes first) from vehicle delivery date. Services are subject to User Terms and limitations. Certain services require working electrical system, cell service and GPS signals. OnStar links to emergency services. Visit onstar.com for more details. ⁵ Head room is the same for models with available sunroof. ⁶ Cargo and load capacity limited by weight and distribution.

IMPORTANT INFORMATION

CHEVROLET CONNECTED SERVICES AND ONSTAR Effective May 1, 2018, available Chevrolet Connected Services have changed significantly. While many of the offered services are the same, available plans and pricing are different. Connected vehicle services require a paid connected vehicle services plan or trial and connected hardware, vehicle electrical system (including battery), wireless service and GPS satellite signals to be available and operating for features to function properly. OnStar acts as a link to existing emergency service providers. Visit onstar.com for coverage map, details and system limitations.

CHEVROLET OWNER CENTER (MY.CHEVROLET.COM) Everything you need to know. Anything you need to do. Your Chevrolet Owner Center makes it easy. Create your account today to get the most out of your new vehicle. Get special alerts and offers, schedule service, review your maintenance schedule, and view how-to videos specifically for your vehicle. All online, anytime. Visit the Owner Center today to register or take a tour.

ENGINES Chevrolet products are equipped with engines produced by GM Global Propulsion Systems or other suppliers to GM worldwide. The engines in Chevrolet products may also be used in other GM makes and models.

ASSEMBLY Chevrolet vehicles and their components are assembled or produced by different operating units of General Motors, its subsidiaries or suppliers to GM worldwide. We sometimes find it necessary to produce Chevrolet vehicles with different or differently sourced components than originally scheduled. Since some options may be unavailable when your vehicle is assembled, we suggest you verify that your vehicle includes the equipment you ordered and that, if there were changes, they are acceptable to you.

A NOTE ON CHILD SAFETY Always use seat belts and the correct child restraint for your child's age and size, even with airbags. Even in vehicles equipped with the Passenger Sensing System, children are safer when properly secured in a rear seat in the appropriate infant, child or booster seat. Never place a rear-facing infant restraint in the front seat of any vehicle equipped with an active frontal airbag. See your vehicle Owner's Manual and the child safety seat instructions for more safety information.

IMPORTANT WORDS ABOUT THIS CATALOG We have tried to make this catalog comprehensive and factual. We reserve the right, however, to make changes at any time, without notice, in prices, colors, materials, equipment,

specifications, models and availability. Specifications, dimensions, measurements, ratings and other numbers in this catalog and other printed materials provided at the dealership or affixed to vehicles are approximations based on design and engineering drawings, prototypes and laboratory tests. Your vehicle may differ due to variations in manufacture and equipment. Since some information may have been updated since the time of printing, please check with your Chevrolet dealer for complete details. Chevrolet reserves the right to lengthen or shorten the model year for any product for any reason or to start and end model years at different times. Certain vehicle features may lose their usefulness over time due to obsolescence from technological changes. Unless otherwise noted, all claims based on GM Small SUV segment and latest available competitive information. Excludes other GM vehicles.

FLEET ORDERS Some standard content may be deleted on fleet orders. See dealer for details.

CHEVROLET OWNERSHIP EXPERIENCE Chevrolet is committed to enhancing the vehicle shopping and ownership experience through a wide array of programs. Visit chevrolet.com to build and price, find a vehicle, request a quote, compare vehicles, find financial tools or track your vehicle order. You'll also find information about 24-hour Roadside Assistance, Courtesy Transportation, Customer Assistance, GM Mobility, safety and current incentives.

CHEVROLET.COM/SAFETY Chevrolet is committed to keeping you and your family safe – from the start of your journey to your destination. That's why every Chevrolet is designed with a comprehensive list of safety and security features to help give you peace of mind.

GMMOBILITY.COM (1-800-323-9935) GM Mobility™ offers financial assistance for eligible adaptive equipment to make automotive travel easier for persons with disabilities or special transportation needs. To learn more about special GM Mobility offers, visit gmmobility.com.

THE BUYPOWER CARD The Chevrolet BuyPower Card – Every purchase you make with the BuyPower Card from Capital One* helps you earn toward an eligible new Chevrolet, Buick, GMC or Cadillac vehicle. There's no limit on the amount you can earn or redeem, and your Earnings don't expire. Visit chevroletbuypowercard.com/catalogs.

* Capital One, N.A. is the issuer of the BuyPower Card. General Motors ("GM") is responsible for the operation and administration of the Earnings program.



TWITTER.COM/CHEVROLET



YOUTUBE.COM/CHEVROLET



FACEBOOK.COM/CHEVROLET



INSTAGRAM.COM/CHEVROLET

GM, the GM logo, Chevrolet, the Chevrolet logo, and the slogans, emblems, vehicle model names, vehicle body designs and other marks appearing in this catalog are the trademarks and/or service marks of General Motors, its subsidiaries, affiliates or licensors. ©2018 OnStar LLC. All rights reserved. Sirius, XM, SiriusXM and all related marks and logos are trademarks of Sirius XM Radio Inc. The Bluetooth word mark is a registered trademark owned by Bluetooth SIG, Inc., and any use of such mark by Chevrolet is under license. Bose is a registered trademark and RichBass is a trademark of the Bose Corp. ©2018 General Motors. All rights reserved. August 2018



FIND NEW ROADS™

CHEVROLET.COM