

TRAX 2020

CHEVROLET 



Trax Premier in Nightfall Gray  
Metallic (interim availability).

# CIVILIZE THE CITY.

Urban living is great except for traffic and parking. That's where the 2020 Chevrolet Trax shines. This small SUV is built to help get you in and out of tight parking spots while taking you and four friends for a day or night on the town. With its available safety features and surprising cargo flexibility, Trax is ready to take on the demands of the city – and your life.

## FIND NEW ROADS™



## MODELS

### LS

Step into a small SUV that's just right for the city.

Trax is made for today's tight parking spaces and ever-present traffic, with a higher driving position than a car and plenty of comfort and utility inside.

Every Trax is well equipped, with a StabiliTrak® Electronic Stability Control System, the Chevrolet Infotainment 3 system<sup>1</sup> and a Rear Vision Camera<sup>2</sup>



### LT

Take a step up in style with many convenient and useful features for your driving needs.

Halogen projector-style headlamps light up the road in front of you, and heated power-adjustable outside body-color mirrors stay clear in icy weather.

You can opt for the available Driver Confidence Package<sup>2</sup> as well as available 18-inch aluminum wheels to give your Trax a look of authority.



<sup>1</sup> Chevrolet Infotainment System functionality varies by model. Full functionality requires compatible Bluetooth and smartphone, and USB connectivity for some devices. <sup>2</sup> Read the vehicle Owner's Manual for important feature limitations and information.

## MODELS

### PREMIER

Meet the Trax that's always dressed for the occasion.

Grab onto a 3-spoke leather-wrapped steering wheel with mounted cruise, audio and phone interface controls. Leatherette seats are standard.

You'll also receive a complement of active safety technology, including Forward Collision Alert<sup>1</sup>, Lane Departure Warning<sup>2</sup>, Side Blind Zone Alert<sup>1</sup>, Rear Cross Traffic Alert<sup>1</sup> and Rear Park Assist<sup>2</sup>.

Aluminum 18-inch wheels add a strong presence and a power sunroof provides the finishing touch.



<sup>1</sup> Read the vehicle Owner's Manual for important feature limitations and information.



Trax Premier interior in Jet Black with available features.

## INTERIOR DESIGN

### TAILORED EXACTLY FOR YOU.

A dual cockpit design creates attractive symmetry. And many of the tactile surfaces are made of supple materials that provide a soft, rich feel.

The Trax interior provides attention to detail that you'll appreciate. Contrasting stitching accents the seats. Premier models include heated driver and front passenger seats.





## INTERIOR FEATURES

### TAKE IT ALL WITH YOU.

Flexibility is what makes Trax so easy to love. You can seat five people, and there are eight different ways to carry passengers and cargo wherever you're going.

With a **60/40 split-folding rear seat** and a fold-flat front passenger seat, you can carry items up to eight feet long. Plus, there's **48.4 cu. ft. of maximum cargo space** with the rear seats folded down.

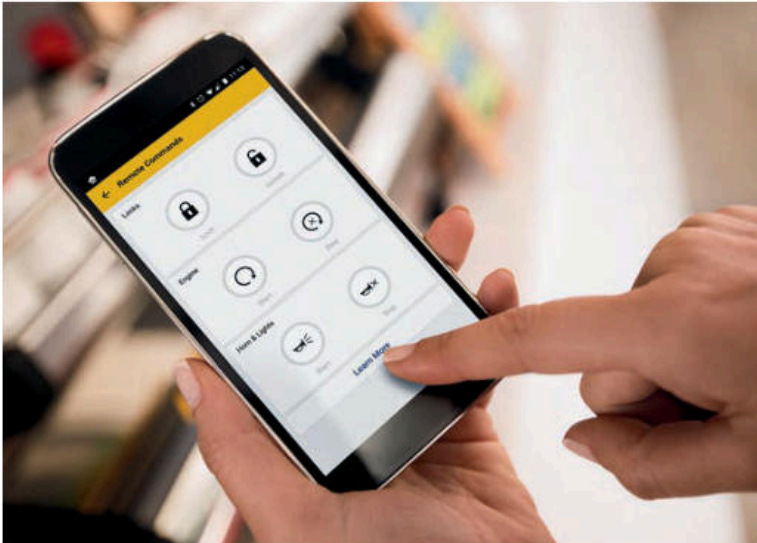
A **Driver Information Center** lets you view information such as fuel range, oil life, tire pressure and more.

Available myChevrolet Mobile App<sup>1</sup>; includes remote vehicle start if properly equipped (requires paid plan).

Two convenient USB ports<sup>2</sup> and an auxiliary input jack.

Android Auto<sup>3</sup> compatibility.

Keyless Open and Start. Standard on Premier and available on LT.



<sup>1</sup> Available on select Apple and Android devices. Service availability, features and functionality vary by vehicle, device and the plan you are enrolled in. User terms apply. Device data connection required. Visit [onstar.com](http://onstar.com) for details and limitations.  
<sup>2</sup> Not compatible with all devices. <sup>3</sup> Vehicle user interface is a product of Google and its terms and privacy statements apply. Requires the Android Auto app on Google Play and an Android compatible smartphone running Android 5.0 Lollipop or higher. Data plan rates apply.

Android Auto and Google Maps are trademarks of Google LLC.



## TECHNOLOGY

# CONNECT TO WHAT MATTERS.

- The Chevrolet Infotainment 3 system<sup>1</sup> is intuitive and easy to use with the 7-inch diagonal color touch-screen display.
- Available 4G LTE Wi-Fi<sup>2</sup> provides a fast and reliable connection for up to seven devices.
- Apple CarPlay<sup>3</sup> compatibility.
- Android Auto<sup>4</sup> compatibility.

<sup>1</sup> Chevrolet Infotainment System functionality varies by model. Full functionality requires compatible Bluetooth and smartphone, and USB connectivity for some devices. <sup>2</sup> Service varies with conditions and location. Requires active service plan. Data plans offered by AT&T. Visit [onstar.com](http://onstar.com) for details and limitations. <sup>3</sup> Vehicle user interface is a product of Apple and its terms and privacy statements apply. Requires compatible iPhone and data plan rates apply. <sup>4</sup> Vehicle user interface is a product of Google and its terms and privacy statements apply. Requires the Android Auto app on Google Play and an Android compatible smartphone running Android 5.0 Lollipop or higher. Data plan rates apply.

Apple CarPlay and iPhone are trademarks of Apple Inc., registered in the U.S. and other countries. Android Auto and Google Maps are trademarks of Google LLC.

## SAFETY AND DRIVER ASSISTANCE

### READY AND VIGILANT.



**Forward Collision Alert.** This feature monitors how close your vehicle is to the detected vehicle in front of you and can alert you to a potential crash. Standard on Premier.



**Lane Departure Warning.** This camera-based system reads traffic lane markings when identifiable and provides alerts if you unintentionally drift out of your lane without using a turn signal. Standard on Premier.



**Side Blind Zone Alert.** This feature can provide side mirror alerts when a moving vehicle is detected in a side blind zone. Standard on Premier. Available on LT.



**Rear Cross Traffic Alert.** This feature can alert you to detected vehicles crossing behind your Trax when backing up. Standard on Premier. Available on LT.



**Rear Vision Camera.** When traveling in Reverse at low speeds, this feature helps provide a view of the area immediately behind your Trax. Standard on all models.



**Rear Park Assist.** When traveling in Reverse at low speeds, this feature can provide distance alerts when it detects certain stationary objects in close proximity behind the vehicle. Standard on Premier. Available on LT.



**10 standard airbags!** Every Trax includes frontal and knee airbags for driver and front passenger and head-curtain and seat-mounted side-impact airbags for all outboard seating positions.

**OnStar Automatic Crash Response?** In a crash, built-in sensors can automatically alert a specially trained, Emergency-Certified OnStar Advisor<sup>3</sup> who can send help – even if you can't ask for it. Advisors can use GPS technology to pinpoint your vehicle's location for first responders and offer critical assistance until help arrives. OnStar Automatic Crash Response is included in the available OnStar Safety & Security Plan<sup>2</sup>.

**Safety starts with you.** Safety or driver assistance features are no substitute for the driver's responsibility to operate the vehicle in a safe manner. The driver should remain attentive to traffic, surroundings and road conditions at all times. Visibility, weather and road conditions may affect feature performance. Read the vehicle Owner's Manual for more important feature limitations and information.

<sup>1</sup> A NOTE ON CHILD SAFETY: Always use seat belts and the correct child restraint for your child's age and size, even with airbags. Even in vehicles equipped with the Passenger Sensing System, children are safer when properly secured in a rear seat in the appropriate infant, child or booster seat. Never place a rear-facing infant restraint in the front seat of any vehicle equipped with an active frontal airbag. See your vehicle Owner's Manual and the child safety seat instructions for more safety information. <sup>2</sup> OnStar plan, working electrical system, cell reception and GPS signal required. Not all vehicles may transmit all crash data. OnStar links to emergency services. Visit [onstar.com](http://onstar.com) for details and limitations. <sup>3</sup> OnStar Advisors are certified by the International Academies of Emergency Dispatch.



PERFORMANCE

# DRIVE LIKE YOU BELONG HERE.

- 138-horsepower ECOTEC® 1.4L turbocharged 4-cylinder engine with 148 lb.-ft. of torque.
- Electronically controlled 6-speed automatic transmission.
- Standard front-wheel drive (FWD) or available all-wheel drive (AWD) that engages automatically when accelerating from a standing start and shifts back to FWD when no longer needed.
- EPA-estimated 26 MPG city/31 highway (FWD) and 24 city/29 highway (AWD).



## SPECIAL FEATURES



## EXTERIOR COLORS



Summit White



Silver Ice Metallic<sup>1</sup>



Satin Steel Metallic<sup>2</sup>



Nightfall Gray Metallic<sup>2</sup>



Stone Gray Metallic<sup>3</sup>



Red Hot<sup>3</sup>



Cajun Red Tintcoat<sup>2,4,5</sup>



Black Cherry Metallic<sup>3</sup>



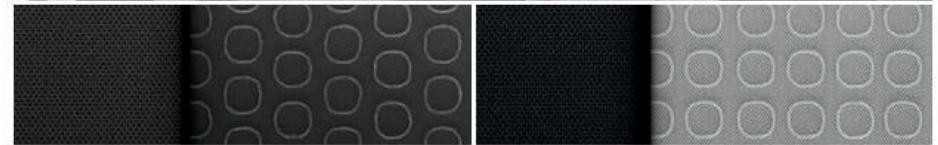
Pacific Blue Metallic<sup>4</sup>



Mosaic Black Metallic

<sup>1</sup> Not available with Brandy/Jet Black interior. <sup>2</sup> Interim availability. <sup>3</sup> Late availability. <sup>4</sup> Not available on LS. <sup>5</sup> Extra-cost color.

## MODELS



Jet Black Cloth

Light Ash Gray Cloth (shown)



16" Painted-Aluminum Wheels  
Standard on LS

**LS** Trax LS includes these features:

### MECHANICAL

**Brakes** – 4-wheel antilock (front disc/rear drum on FWD models; 4-wheel disc on AWD models)

**Engine** – ECOTEC 1.4L turbocharged DOHC 4-cylinder with Variable Valve Timing (VVT)

**Hill Start Assist**

**StabiliTrak** – Electronic Stability Control System with Traction Control

**Transmission** – 6-speed automatic with overdrive and Driver Shift Control

### EXTERIOR

**Daytime running lamps** – reduced intensity high beam

**Door handles** – body-color

**Glass** – solar-absorbing tinted; acoustic-laminated windshield

**Headlamps** – halogen reflector, automatic on/off with automatic delay

**Mirrors** – power-adjustable, manual-folding, body-color with Black base

**Moldings** – Black beltline

**Tire** – compact spare

**Tires** – P205/70R16

**Wipers** – front variable-speed, intermittent with washers; rear intermittent with washer

### INTERIOR

**Air conditioning** – manual, single-zone

**Audio** – 6-speaker system

**Compass** – digital, in Driver Information Center

**Door locks** – power programmable with lockout protection and manual rear door child security

**Driver Information Center** – 3.5-inch diagonal monochromatic display

**Entertainment** – Chevrolet Infotainment 3 system<sup>1</sup> with 7-inch diagonal color touch-screen, AM/FM stereo, Bluetooth<sup>®</sup> audio streaming<sup>2</sup> for two active devices, voice command pass-through to compatible phone, and Apple CarPlay<sup>™3</sup> and Android Auto<sup>™4</sup> compatibility

**Floor mats** – carpeted front and rear

**Lighting** – front-seat reading lamps, overhead courtesy lamp and rear cargo area lamp

### INTERIOR (CONTINUED)

**Media** – two USB ports<sup>5</sup> and auxiliary input jack

**Power outlet** – auxiliary 12-volt

**Rear Vision Camera**<sup>6</sup>

**Remote Keyless Entry** – with panic alarm

**Seat** – driver 4-way manual adjuster with power lumbar control and armrest

**Seat** – fold-flat front passenger seatback

**Seats** – rear, 60/40 split-folding bench

**Steering column** – manual tilt and telescopic

**Steering wheel** – mounted audio and phone controls

**Theft-deterrent system** – unauthorized entry

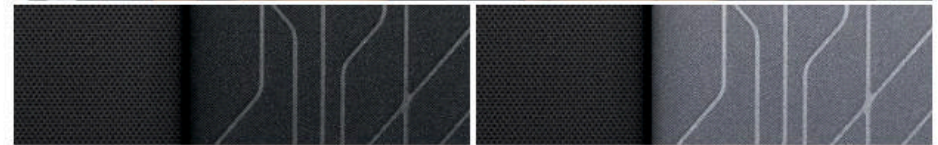
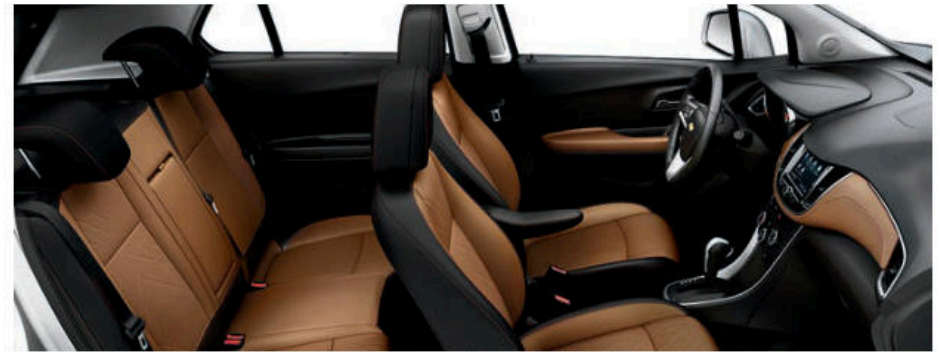
**Tire Pressure Monitor** (does not monitor spare tire)

**Visors** – driver and front passenger, covered vanity mirrors

**Windows** – power with driver express-up/-down, all others express-down

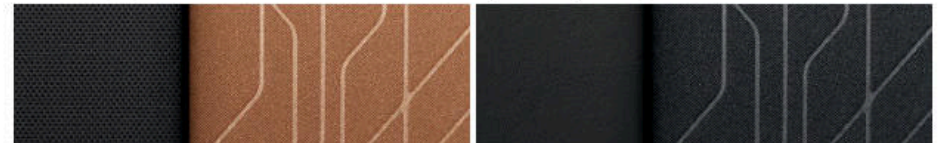
<sup>1</sup> Chevrolet Infotainment System functionality varies by model. Full functionality requires compatible Bluetooth and smartphone, and USB connectivity for some devices. <sup>2</sup> Go to [my.chevrolet.com/learnAbout/bluetooth](http://my.chevrolet.com/learnAbout/bluetooth) to find out which phones are compatible with the vehicle. Full Bluetooth feature functionality varies by device, model and software version. <sup>3</sup> Vehicle user interface is a product of Apple and its terms and privacy statements apply. Requires compatible iPhone and data plan rates apply. <sup>4</sup> Vehicle user interface is a product of Google and its terms and privacy statements apply. Requires the Android Auto app on Google Play and an Android compatible smartphone running Android 5.0 Lollipop or higher. Data plan rates apply. <sup>5</sup> Not compatible with all devices. <sup>6</sup> Read the vehicle Owner's Manual for important feature limitations and information.

## MODELS (CONTINUED)



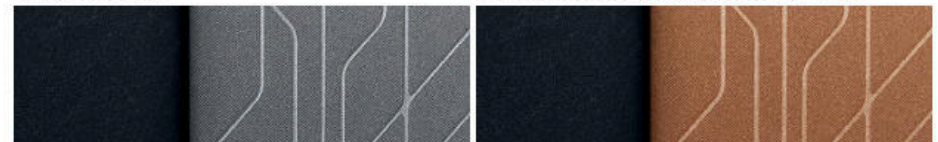
Jet Black Deluxe Cloth

Light Ash Gray Deluxe Cloth



Brandy Deluxe Cloth

Jet Black Deluxe Cloth/Leatherette Seating Surfaces<sup>2</sup>



Light Ash Gray Deluxe Cloth/Leatherette Seating Surfaces<sup>2</sup>

Brandy Deluxe Cloth/Leatherette Seating Surfaces<sup>2</sup> (shown)



16" Painted-Aluminum Wheels  
Standard on LT



18" Midnight Silver-Painted  
Aluminum Wheels  
Available on LT with  
LT Convenience Package



18" Black-Finish Aluminum Wheels  
with Red Accents  
Available on LT with Redline Edition

**LT** In addition to or replacing LS features, LT includes:

### EXTERIOR

Daytime running lamps – LED

Glass – deep-tinted rear windows

Headlamps – projector-style halogen with automatic exterior lamp control

Luggage rack – side rails, roof-mounted

Mirrors – heated, power-adjustable, manual-folding with body-color caps

Moldings – chrome beltline

Skid plates – front and rear, Silver-painted

Taillamps – LED

### INTERIOR

Cargo area – security cover, rigid, removable

Cruise control – electronic with Set and Resume Speed

Power outlet – 110-volt on rear of center console

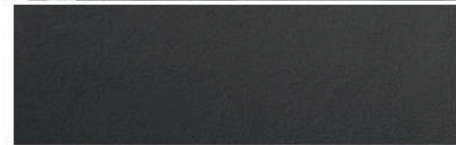
Remote vehicle starter system

SiriusXM<sup>®1</sup> – All Access Package with 3-month trial subscription

Storage – front passenger underseat drawer

<sup>1</sup> If you decide to continue service after your trial, your selected subscription plan will automatically renew thereafter. You will be charged at then-current rates. Fees and taxes apply. Please see the SiriusXM Customer Agreement at [siriusxm.com](http://siriusxm.com) for complete terms and how to cancel, which includes calling SiriusXM at 1-866-635-2349. All fees and programming are subject to change. <sup>2</sup> Requires available LT Convenience Package.

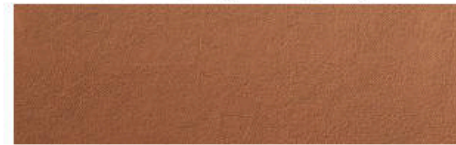
## MODELS (CONTINUED)



Jet Black Leatherette Seating Surfaces (shown)



Light Ash Gray Leatherette Seating Surfaces



Brandy Leatherette Seating Surfaces



18" Aluminum Wheels  
Standard on Premier

**PREMIER** In addition to or replacing LT features, Premier includes:

### EXTERIOR

Door handles – body-color with chrome accent

Foglamps

Liftgate accents – chrome

Tires – P215/55R18

### INTERIOR

Audio – 7-speaker Bose premium system, including Richbass woofer

Forward Collision Alert<sup>1</sup>

Keyless Open and Start

Lane Departure Warning<sup>1</sup>

Mirror – rearview, auto-dimming

Rear Cross Traffic Alert<sup>1</sup>

Rear Park Assist<sup>1</sup>

Seat – driver 6-way power adjuster with power lumbar control

Seats – heated, driver and front passenger

Side Blind Zone Alert<sup>1</sup>

Sill plates – front, bright

Steering wheel – leather-wrapped

Sunroof – power with sunshade

Visors – driver and front passenger, covered illuminated vanity mirrors

<sup>1</sup> Read the vehicle Owner's Manual for important feature limitations and information.

## SPECIFICATIONS

● STANDARD ○ AVAILABLE – NOT AVAILABLE

	LS	LT	PREMIER
<b>EXTERIOR</b>			
Door handles: Body-color	●	●	–
Body-color with chrome accent (requires available LT Convenience Package on LT)	–	○	●
Glass: Deep-tinted rear windows (requires available Tint and Cruise Package on LS)	○	●	●
<b>ENGINE/CHASSIS</b>			
All-wheel drive	○	○	○
Engine: ECOTEC 1.4L turbocharged DOHC 4-cylinder with Variable Valve Timing (VVT); 138 hp @ 4900 rpm, 148 lb.-ft. of torque @ 1850 rpm	●	●	●
Transmission: 6-speed automatic with overdrive and Driver Shift Control	●	●	●
<b>SAFETY &amp; SECURITY</b>			
Airbags: <sup>2</sup> Frontal and knee airbags for driver and front passenger; seat-mounted side-impact airbags for all outboard seating positions; head-curtain airbags for front and rear outboard seating positions; includes front Passenger Sensing System for frontal passenger airbag	●	●	●
Forward Collision Alert <sup>1</sup>	–	–	●
Lane Departure Warning <sup>1</sup>	–	–	●
LATCH system (Lower Anchors and Tethers for Children), for child restraint systems	●	●	●
Rear Cross Traffic Alert <sup>1</sup> (requires available Driver Confidence Package on LT)	–	○	●
Rear Park Assist <sup>1</sup> (requires available Driver Confidence Package on LT)	–	○	●
Rear Vision Camera <sup>1</sup>	●	●	●
Side Blind Zone Alert <sup>1</sup> (requires available Driver Confidence Package on LT)	–	○	●
Theft-deterrent system: Unauthorized entry	●	●	●
1 month of OnStar Safety & Security Plan coverage <sup>3</sup> , which includes Automatic Crash Response, Emergency Services, Crisis Assist, Stolen Vehicle Assistance, Roadside Assistance and Turn-by-Turn Navigation <sup>4</sup>	●	●	●

	LS	LT	PREMIER
<b>INTERIOR</b>			
Cruise control: Electronic with Set and Resume Speed (requires available Tint and Cruise Package on LS)	○	●	●
Remote Keyless Entry: With panic alarm	●	●	–
Keyless Open and Start (requires available LT Convenience Package on LT)	–	○	●
Steering wheel: 3-spoke with mounted audio and phone interface controls	●	–	–
3-spoke with mounted cruise, audio and phone interface controls (requires available Tint and Cruise Package on LS)	○	●	●
3-spoke leather-wrapped with mounted cruise, audio and phone interface controls (requires available LT Convenience Package on LT)	–	○	●
Sunroof: Power with sunshade (requires available Sun and Sound Package on LT)	–	○	●
<b>SEATING</b>			
Seats: Front bucket	●	●	●
Rear 60/40 manual-folding split-bench	●	●	●
Seat: Driver 4-way manual adjuster with power lumbar control	●	●	–
Driver 6-way power adjuster with power lumbar control (requires available LT Convenience Package on LT)	–	○	●
Front passenger fold-flat seatback	●	●	●
Heated driver and front passenger seats	–	–	●
<b>ENTERTAINMENT</b>			
Chevrolet Infotainment 3 system <sup>5</sup> with 7-inch diagonal color touch-screen, AM/FM stereo, Bluetooth <sup>®</sup> audio streaming <sup>6</sup> for two active devices, voice command pass-through to compatible phone, and Apple CarPlay <sup>®7</sup> and Android Auto <sup>™8</sup> compatibility	●	●	●
Audio: 6-speaker system	●	●	–
Bose premium 7-speaker system, including Richbass woofer (requires available Sun and Sound Package on LT)	–	○	●
Media: Two USB ports <sup>9</sup> and auxiliary input jack	●	●	●
SiriusXM <sup>®10</sup> All Access Package with 3-month trial subscription	–	●	●
4G LTE Wi-Fi <sup>®11</sup> Hotspot for up to seven devices, includes 1 month or 3 GB of data (whichever comes first)	○	○	○
Chevrolet Connected Access <sup>12</sup> with 10 years of standard connectivity, which currently enables features such as Vehicle Diagnostics and Dealer Maintenance Notification	●	●	●

<sup>1</sup> Read the vehicle Owner's Manual for important feature limitations and information. <sup>2</sup> A NOTE ON CHILD SAFETY: Always use seat belts and the correct child restraint for your child's age and size, even with airbags. Even in vehicles equipped with the Passenger Sensing System, children are safer when properly secured in a rear seat in the appropriate infant, child or booster seat. Never place a rear-facing infant restraint in the front seat of any vehicle equipped with an active frontal airbag. See your vehicle Owner's Manual and the child safety seat instructions for more safety information. <sup>3</sup> OnStar plan, working electrical system, cell reception and GPS signal required. OnStar links to emergency services. Not all vehicles may transmit all crash data. Roadside services provided by Allstate Roadside Services for vehicles only. Limitations and restrictions apply. Stolen Vehicle Assistance requires armed GM factory-installed theft-deterrent system, contact method on file and enrollment to receive alerts. Services are intended to assist with vehicle recovery and do not prevent theft or protect against damage or loss. Visit onstar.com for details and limitations. Availability subject to change. <sup>4</sup> Advisor-based Turn-by-Turn Navigation is subject to User Terms and limitations, and varies by vehicle model. Map coverage available in the United States, Puerto Rico and Canada. <sup>5</sup> Chevrolet Infotainment System functionality varies by model. Full functionality requires compatible Bluetooth and smartphone, and USB connectivity for some devices. <sup>6</sup> Go to my.chevrolet.com/learnAbout/bluetooth to find out which phones are compatible with the vehicle. Full Bluetooth feature functionality varies by device, model and software version. <sup>7</sup> Vehicle user interface is a product of Apple and its terms and privacy statements apply. Requires compatible iPhone and data plan rates apply. <sup>8</sup> Vehicle user interface is a product of Google and its terms and privacy statements apply. Requires the Android Auto app on Google Play and an Android compatible smartphone running Android 5.0 Lollipop or higher. Data plan rates apply. <sup>9</sup> Not compatible with all devices. <sup>10</sup> If you decide to continue service after your trial, your selected subscription plan will automatically renew thereafter. You will be charged at then-current rates. Fees and taxes apply. Please see the SiriusXM Customer Agreement at siriusxm.com for complete terms and how to cancel, which includes calling SiriusXM at 1-866-635-2349. All fees and programming are subject to change. <sup>11</sup> Service varies with conditions and location. Requires active service plan. Data plans offered by AT&T. Visit onstar.com for details and limitations. Availability subject to change. <sup>12</sup> Standard connectivity available only to original purchaser for 10 years. Services enabled by Connected Access are subject to change. Does not include emergency or security services. Diagnostic capabilities vary by model and service plan. Message and data rates may apply. Requires contact method on file and enrollment to receive alerts. Not all issues will deliver alerts. Visit onstar.com for details and limitations.

## SPECIFICATIONS (CONTINUED)

● STANDARD ○ AVAILABLE – NOT AVAILABLE

	LS	LT	PREMIER
<b>PACKAGES AND SPECIAL EDITIONS</b>			
<b>Tint and Cruise Package</b>	○	–	–
Deep-tinted rear windows and cruise control			
<b>Driver Confidence Package</b>	–	○	●
Side Blind Zone Alert <sup>1</sup> ; Rear Cross Traffic Alert <sup>1</sup> and Rear Park Assist <sup>1</sup> (requires available LT Convenience Package on LT)			
<b>LT Convenience Package</b>	–	○	–
Keyless Open and Start, 6-way power driver seat adjuster with power lumbar control, leather-wrapped 3-spoke steering wheel, Deluxe Cloth/Leatherette seating surfaces and body-color door handles with chrome accent			
<b>Midnight Edition<sup>2</sup></b>	–	○	–
Unique 18" aluminum wheels, Black front and rear lower fascias, beltline moldings, bowtie emblems and rear liftgate applique, and body-color mirror caps and door handles (requires Jet Black interior; available in Mosaic Black Metallic exterior color)			
<b>Redline Edition</b>	–	○	–
18" Black-finish aluminum wheels with Red accents, P215/55R18 tires, Black bowtie emblems, Black grille with Black surround, Black mirror caps, Black beltline moldings and Black Trax badge with Red outline (requires available LT Convenience Package and Jet Black interior; available with Silver Ice Metallic, Summit White or Mosaic Black Metallic exterior colors)			
<b>Sun and Sound Package</b>	–	○	–
Bose premium 7-speaker audio system, including Richbass woofer, and power sunroof (requires available LT Convenience Package on LT)			

<sup>1</sup> Read the vehicle Owner's Manual for important feature limitations and information. <sup>2</sup> Late availability.

## DIMENSIONS

Length	167.6"
Wheelbase	100.6"
Height	65" (without roof rails) 66.5" (with roof rails)

Width	69.9"
Front Track	60.6"
Rear Track	60.6"

Head Room (front/rear) <sup>1</sup>	39.6"/38.8"
Leg Room (front/rear)	40.8"/35.7"
Shoulder Room (front/rear)	54.1"/52.8"

## MAXIMUM CAPACITIES

Fuel tank (approximate)	14 gallons
Passenger volume	92.8 cubic feet (91.6 cubic feet with sunroof)/seats 5
Cargo volume <sup>2</sup>	18.7 cubic feet (rear seat up) 48.4 cubic feet (rear seat folded)

## EPA-ESTIMATED FUEL ECONOMY

1.4L turbocharged FWD	26 MPG city/31 highway/28 combined
1.4L turbocharged AWD	24 MPG city/29 highway/26 combined



Experience Chevrolet Complete Care, a comprehensive coverage, warranty and protection program that comes standard with every new 2020 Chevrolet Trax lease and purchase. Simply, it is designed around you, to make it easy to keep your Chevrolet like new – and give you the confidence you deserve when you need it most.

### Your comprehensive owner benefit program.

Includes one maintenance visit (oil change, tire rotation and multi-point vehicle inspection) <sup>3</sup>
5 years/60,000 miles <sup>4</sup> of Roadside Assistance <sup>5</sup> and Courtesy Transportation.
3-year/36,000-mile <sup>4</sup> Bumper-to-Bumper Limited Warranty.
5-year/60,000-mile <sup>4</sup> Powertrain Limited Warranty.
6 years/100,000 miles <sup>4</sup> of Rust-Through Protection.
Chevrolet Connected Access <sup>6</sup> with 10 years of standard connectivity, which currently enables features such as Vehicle Diagnostics and Dealer Maintenance Notification.
1 month of Chevrolet Connected Services <sup>7</sup> and 1 month of OnStar Safety & Security Plan coverage. <sup>7</sup>

## NEW VEHICLE LIMITED WARRANTY

**3-year/36,000-mile Bumper-to-Bumper Limited Warranty.** Chevrolet will warrant each 2020 Trax from bumper to bumper for 3 years/36,000 miles (whichever comes first; see dealer for details), with no deductible, from the original in-service date of the vehicle, for warrantable repairs that are required as a result of defects due to materials and/or workmanship. Cosmetic corrosion resulting from defects is also covered under the Bumper-to-Bumper Limited Warranty. In addition, rust-through corrosion will be covered for 6 years/100,000 miles (whichever comes first). See dealer for details.

**5-year/60,000-mile transferable Powertrain Limited Warranty.** Every 2020 Trax comes with a 5-year/60,000-mile (whichever comes first) transferable Powertrain Limited Warranty. 24/7 Roadside Assistance and Courtesy Transportation are also offered for the duration of the Powertrain Limited Warranty. Please see your Chevrolet dealer for details.

<sup>1</sup> Head room is the same for models with available sunroof. <sup>2</sup> Cargo and load capacity limited by weight and distribution. <sup>3</sup> Maintenance visit must occur within first year of vehicle delivery. Service visit consists of ACDelco dexos1™ Full Synthetic Oil and Filter Change/Tire Rotation/MPVI. Does not include air filters. See participating dealer for other restrictions and complete details. <sup>4</sup> Whichever comes first. See dealer for details. <sup>5</sup> Roadside service provided by Allstate Roadside Services. Limitations apply. <sup>6</sup> Standard connectivity available only to original purchaser for 10 years. Services enabled by Connected Access are subject to change. Does not include emergency or security services. Diagnostic capabilities vary by model and service plan. Message and data rates may apply. Requires contact method on file and enrollment to receive alerts. Not all issues will deliver alerts. Visit onstar.com for details and limitations. <sup>7</sup> Connected services include navigation services and Remote Access Plan. Services subject to terms and limitations. Certain services require working electrical system, cell reception and GPS signal. OnStar links to emergency services. Visit onstar.com for details. Availability subject to change.

## IMPORTANT INFORMATION

**Chevrolet Owner Center (my.chevrolet.com).** Everything you need to know. Anything you need to do. Your Chevrolet Owner Center makes it easy. Create your account today to get the most out of your new vehicle. Get special alerts and offers, schedule service, review your maintenance schedule, and view how-to videos specifically for your vehicle. All online, anytime. Visit the Owner Center today to register or take a tour.

**Engines.** Chevrolet products are equipped with engines produced by GM Global Propulsion Systems or other suppliers to GM worldwide. The engines in Chevrolet products may also be used in other GM makes and models.

**Assembly.** Chevrolet vehicles and their components are assembled or produced by different operating units of General Motors, its subsidiaries or suppliers to GM worldwide. We sometimes find it necessary to produce Chevrolet vehicles with different or differently sourced components than originally scheduled. Since some options may be unavailable when your vehicle is assembled, we suggest you verify that your vehicle includes the equipment you ordered and that, if there were changes, they are acceptable to you.

**Chevrolet Connected Services and OnStar.** Connected vehicle services vary by vehicle model and require an active service plan, working vehicle electrical system (including battery), cell reception and GPS signal to function properly. Visit onstar.com for details and limitations.

**A note on child safety.** Always use seat belts and the correct child restraint for your child's age and size, even with airbags. Even in vehicles equipped with the Passenger Sensing System, children are safer when properly secured in a rear seat in the appropriate infant, child or booster seat. Never place a rear-facing infant restraint in the front seat of any vehicle equipped with an active frontal airbag. See your vehicle Owner's Manual and the child safety seat instructions for more safety information.

**Important words about this catalog.** We have tried to make this catalog comprehensive and factual. We reserve the right, however, to make changes at any time, without notice, in prices, colors, materials, equipment, specifications, models and availability. Specifications, dimensions, measurements, ratings and other numbers in this catalog

and other printed materials provided at the dealership or affixed to vehicles are approximations based on design and engineering drawings, prototypes and laboratory tests. Your vehicle may differ due to variations in manufacture and equipment. Since some information may have been updated since the time of printing, please check with your Chevrolet dealer for complete details. Chevrolet reserves the right to lengthen or shorten the model year for any product for any reason or to start and end model years at different times. Certain vehicle features may lose their usefulness over time due to obsolescence from technological changes. Unless otherwise noted, all claims based on GM Small SUV segment and latest available competitive information. Excludes other GM vehicles.

**Fleet orders.** Some standard content may be deleted on fleet orders. See dealer for details.

**Chevrolet ownership experience.** Chevrolet is committed to enhancing the vehicle shopping and ownership experience through a wide array of programs. Visit chevrolet.com to build and price, find a vehicle, request a quote, compare vehicles, find financial tools or track your vehicle order. You'll also find information about 24-hour Roadside Assistance, Courtesy Transportation, Customer Assistance, GM Mobility, safety and current incentives.

**Chevrolet.com/safety.** Chevrolet is committed to keeping you and your family safe – from the start of your journey to your destination. That's why every Chevrolet is designed with a comprehensive list of safety and security features to help give you peace of mind.

**GMmobility.com (1-800-323-9935).** GM Mobility™ offers financial assistance for eligible adaptive equipment to make automotive travel easier for persons with disabilities or special transportation needs. To learn more about special GM Mobility offers, visit gmmobility.com.

**The BuyPower Card.** The Chevrolet BuyPower Card – Every purchase you make with the BuyPower Card from Capital One\* helps you earn toward an eligible new Chevrolet, Buick, GMC or Cadillac vehicle. There's no limit on the amount you can earn or redeem, and your Earnings don't expire. Visit chevroletbuypowercard.com/catalogs.

\* Capital One, N.A. is the issuer of the BuyPower Card. General Motors ("GM") is responsible for the operation and administration of the Earnings program.



GM, the GM logo, Chevrolet, the Chevrolet logo, and the slogans, emblems, vehicle model names, vehicle body designs and other marks appearing in this catalog are the trademarks and/or service marks of General Motors, its subsidiaries, affiliates or licensors. ©2019 OnStar LLC. All rights reserved. Sirius, XM, SiriusXM and all related marks and logos are trademarks of Sirius XM Radio Inc. The Bluetooth word mark is a registered trademark owned by Bluetooth SIG, Inc., and any use of such mark by Chevrolet is under license. Bose is a registered trademark and Richbass is a trademark of the Bose Corp.

©2019 General Motors. All rights reserved. July 2019

FIND NEW ROADS™

CHEVROLET.COM

