

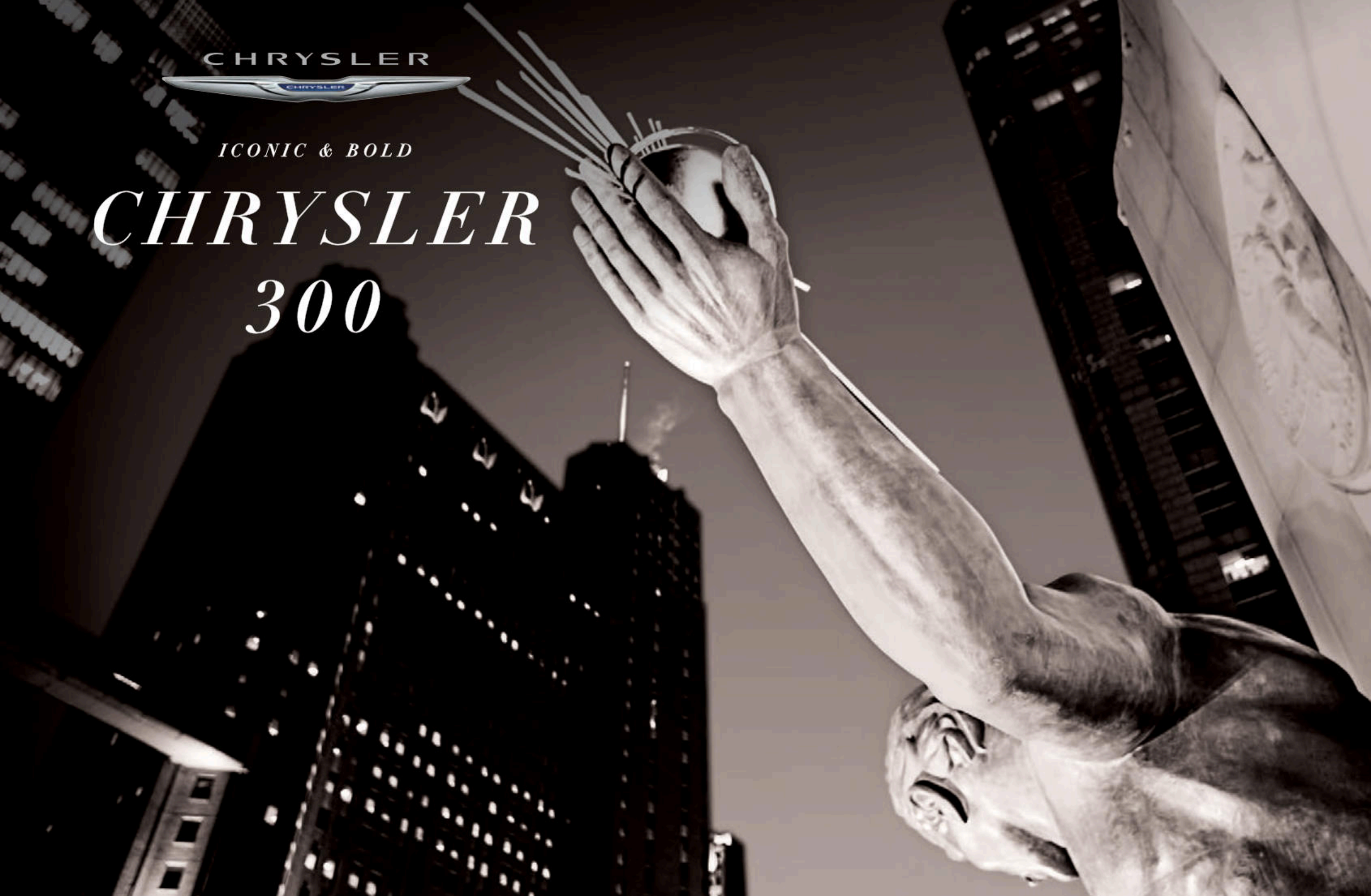
CHRYSLER



ICONIC & BOLD

CHRYSLER

300

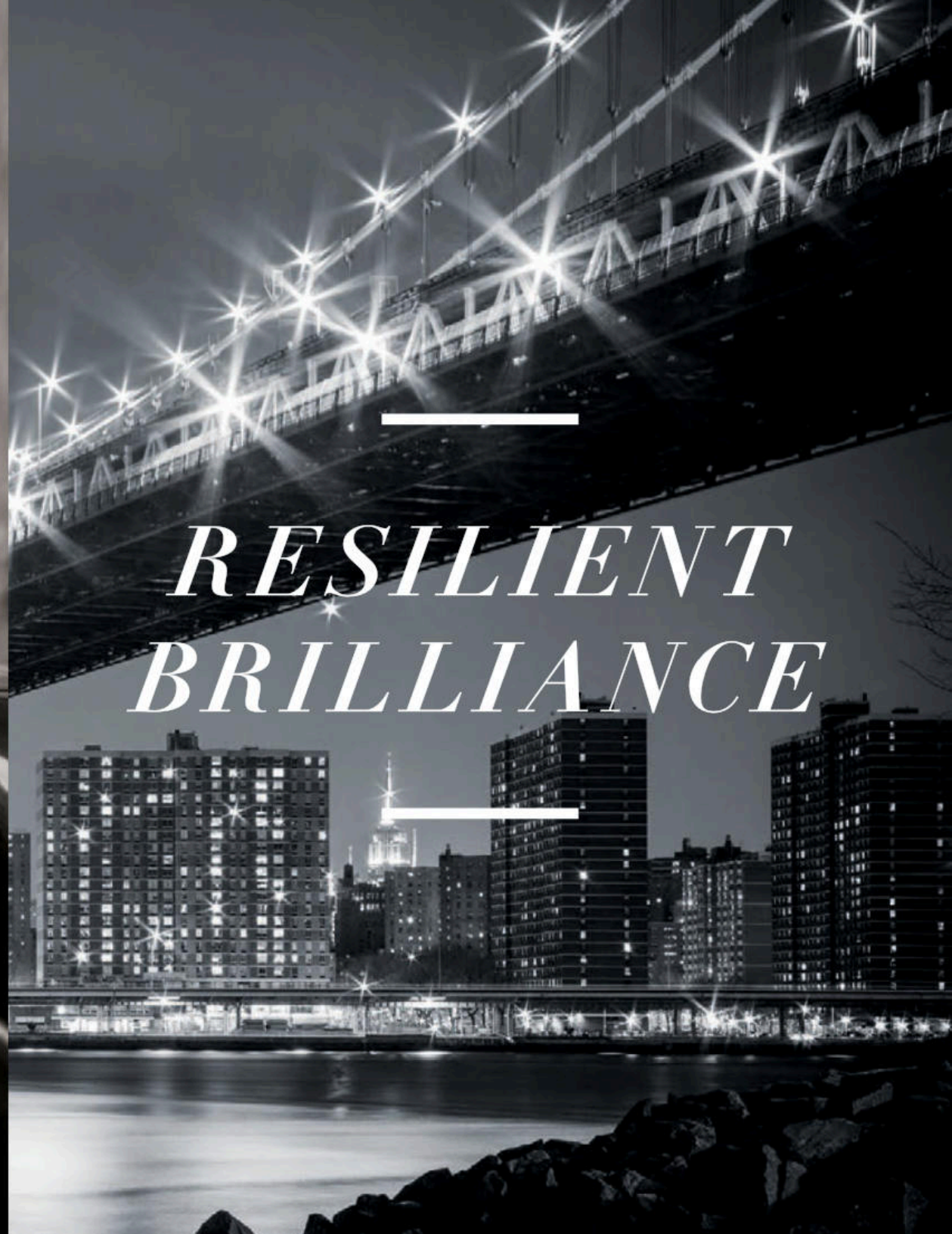


THE 2021 CHRYSLER 300



Make every day a red carpet day

The iconic and distinguished Chrysler 300 portrays luxury and performance from every angle. The authoritative stance framed by bold grilles, wheels and jeweled lighting along with efficiently robust powertrains — and features such as the available All-Wheel Drive (AWD), leather-trimmed interiors and advanced technologies — give waiting in the wings a destiny of its own.



*RESILIENT
BRILLIANCE*



Signature grille and badging

Big, bold, statement-making design elements are the hallmark of the sleek and spirited 300 exterior. The prominent grille stands as tribute to the stand-apart shape defined by sculpted, athletic curves. The artful wing badge represents innovative driving dynamics and beautiful value.

*BOLD DESIGN
WORTHY OF ALL ITS
WINGS CARRY*



*DRESSED BY
CRAFTSMANSHIP*

Details matter

The classic and distinctive interior seating design on the 300S offers elegant structure to standard Nappa leather-trimmed Sport seats and premium athletic appointments.



STYLE PERSONIFIED

The stately 300 silhouette is enhanced by signature lighting, including LED daytime running lamps (DRLs), bifunctional halogen projector headlamps or available adaptive Bi-xenon High Intensity Discharge (HID) headlamps with automatic leveling system, and available Auto High-Beam Headlamp Control.

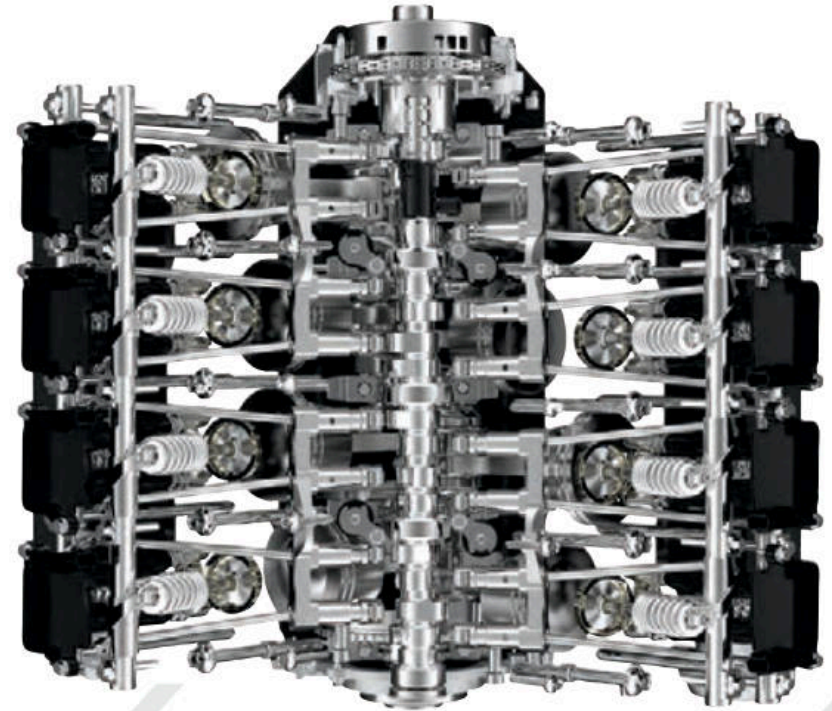


*POWER
THAT
ENDURES*

BEST-IN-CLASS AVAILABLE V8 HORSEPOWER AND TORQUE^{1*}

*A note about this brochure: disclosures can be found on the last page.

363 HP



Automatic adaptation

The legendary 5.7L HEMI[®] V8 engine, available on 300S, delivers 363 horsepower, 394 lb-ft of torque and 0 - 60 mph in less than 6 seconds.

Fuel Saver Technology engineered into the available HEMI V8 engine delivers the power of a V8 and efficiency by detecting when full power isn't needed, such as when highway cruising, by deactivating four of the eight cylinders to help maximize efficiency.

*BOUND
AND
DETERMINED*

Mission-focused performance

The standard 3.6L Pentastar® Variable Valve Timing (VVT) V6 engine yields a fuel-efficiency rating of up to 30 highway mpg² while producing a robust 292 horsepower and 260 lb-ft of torque. And, thanks in part to its dual exhaust system, the 300S produces 300 horsepower and 264 lb-ft of torque for an extra kick of output performance.



300 Touring L with Sport Appearance Package shown in Silver Mist

8-SPEED

Geared to conquer far and wide

Every Chrysler 300 model has a class-exclusive standard rotary shift eight-speed transmission.¹ The standard TorqueFlite[®] eight-speed automatic transmission delivers smooth and efficient gear transitions, for both the 5.7L HEMI[®] V8 and 3.6L Pentastar[®] V6 powertrains.

ARENA





YOUR
STAGE
TO
FORGE

Ultimate All-Wheel-Drive (AWD) traction

The available fully automatic AWD performance system optimizes wheel traction on sharp road inclines and declines and under challenging road-surface conditions, such as wet pavement. If wheels lose traction, AWD automatically transfers power to the wheels with more traction. The intuitive system also helps provide fuel efficiency by only engaging as needed, depending on driving conditions.



*ALL-WHEEL-DRIVE
PRECISION*

AWD

Reinvent your drive

The available advanced All-Wheel-Drive (AWD) system is designed to detect wheel-slip and kicks in before you even realize you need it by automatically distributing power between front and rear wheels. The system also engages when the driver turns off the Electronic Stability Control (ESC)³ system. In cases of inclement weather, AWD is tuned to help minimize oversteer and maximize traction where snow, ice, mud, sand or gravel is present.



300 Touring L AWD with Sport Appearance Package shown in Velvet Red Pearl Coat

The image shows the interior of a car, focusing on the front and rear seats. The seats are upholstered in a rich, dark red leather with white contrast stitching. The front passenger seat is in the foreground, and the driver's seat is to its right. The rear seats are visible in the background. A center console with a gear shifter and handbrake is partially visible in the lower right. The car's interior is dark, and the windows show a blurred outdoor scene. The text "THE S FACTOR" is overlaid in the center of the image.

THE S FACTOR

300S



Chrysler 300S superhero

The 300S gives drivers an edge when it comes to approach. Black headlamp and fog lamp bezels, LED taillamps, Black Chrome surround grille, Gloss Black window trim and 20-inch Black Noise wheels offer an imposing statement.



The 300S model with S Appearance Package includes an aggressive front fascia, unique LED fog lamps and deck lid spoiler. Combined with Sport-mode dynamics and performance-tuned suspension, the strut is much more than surface. Included with 5.7L HEMI® V8 and optional with 3.6L Pentastar® V6 powertrains.

S MODEL SPOTLIGHT

- + Standard Sport mode with steering wheel-mounted paddle shifters
- + Performance-driving capabilities with full manual shifting
- + Navigate via paddle shifters or let the automatic transmission shift normally without driver input
- + Fast gear response during acceleration with smooth power delivery and transitions
- + Available Radar Red Nappa leather-trimmed interior amps up the distinctive performance look and feel





THE LUXURY OF SPACE AND CONVENIENCE

300S with S Model Appearance Package shown in Bright White



BEST-IN-CLASS INTERIOR SPACE

The roomy and functional Chrysler 300 interior makes for a ride that's both luxurious and family-friendly, with best-in-class passenger volume¹ and seating for five. You'll enjoy comfort in any climate thanks to the available heated and ventilated leather-trimmed front seats and heated steering wheel. Rear-seat occupants will enjoy amenities like climate control outlets and available heated seats, as well as access to USB ports.⁴

A photograph showing the interior of a car from the passenger side. A man in a blue suit is driving, and a woman in a black dress is sitting in the passenger seat. They are both looking towards the front of the car. The car has a large panoramic sunroof that is open, showing a clear blue sky. The text "SKYLIGHT VIBE" is written in a white, serif font across the sunroof. The car's interior is dark with blue leather seats and a modern dashboard with a central infotainment screen.

SKYLIGHT VIBE

The intersection of premium and pragmatic

Present yourself in the best light with an available dual-pane panoramic sunroof that extends to the backseat, while the available power backlight sunshade blocks any unwanted direct sunlight from behind. You'll also enjoy the cabin quietness of the sound dampening acoustic glass on the windshield and front doors, as well as the Solar-Control front and rear windows designed to help reduce heat and glare.



In touch wherever you go

The Uconnect® system is your customizable, connected vehicle platform dedicated to safe and seamless communication, available navigation and entertainment — all from one easy-to-use touchscreen.

Uconnect®

DRIVEUCONNECT.COM





Compatibility your way

Uconnect® brings a wide range of interactive features to your vehicle and beyond through a highly intuitive communication experience.

Uconnect phone⁵

Stay connected safely. Pairs a Bluetooth® phone to send and receive hands-free⁵ calls. Includes:

- **DO NOT DISTURB** to route incoming calls to voice mail and suppress text messages.⁵
- **VOICE RECOGNITION** to make hands-free⁵ calls, listen and respond to text messages,⁵ record voice memos, and select media stations and navigation destinations.

Drag-and-drop menu bar

We've made it easy to customize your Uconnect dashboard with your favorite features and services. Simply press the Uconnect icon on the main menu bar to view all of the available apps. Tap and hold any one of the icons to drag and drop into a personalized menu bar.

Siri® Eyes Free⁶

Just say it. Use voice commands with Siri Eyes Free⁶ and your connected iPhone® to create and send texts⁷, make and receive calls, access directions, and play music. Available.

One-step navigation

Take the best route right now. Uconnect employs GPS navigation for audible turn-by-turn directions, and detailed 3D maps help to ensure you arrive on time. Use Voice Command and say the complete address to get directions quickly. Available.

4G Wi-Fi⁸ Hotspot

Along the way, you can upload, download, post and search. Connects to your personal Wi-Fi⁸ device for fast, reliable Internet for up to eight devices within 50 feet of your vehicle. Available.



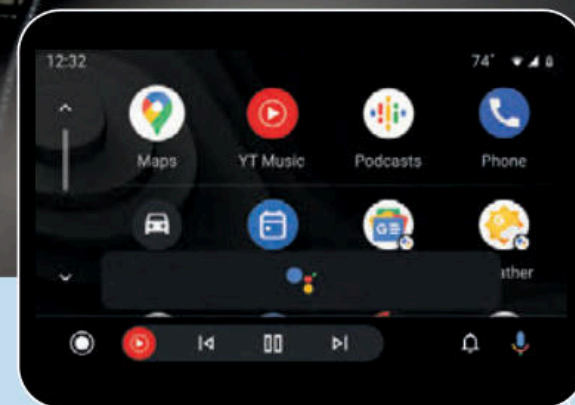
Shown with Apple CarPlay^{®9}



Display your favorite iPhone[®] apps right on your Uconnect[®] touchscreen. Access your iTunes[®] library, call anyone in your contacts list or just ask Siri^{®6} to help you out while you drive. Get directions, make calls and send messages, and connect to Apple Music, all without pausing your drive. Standard.



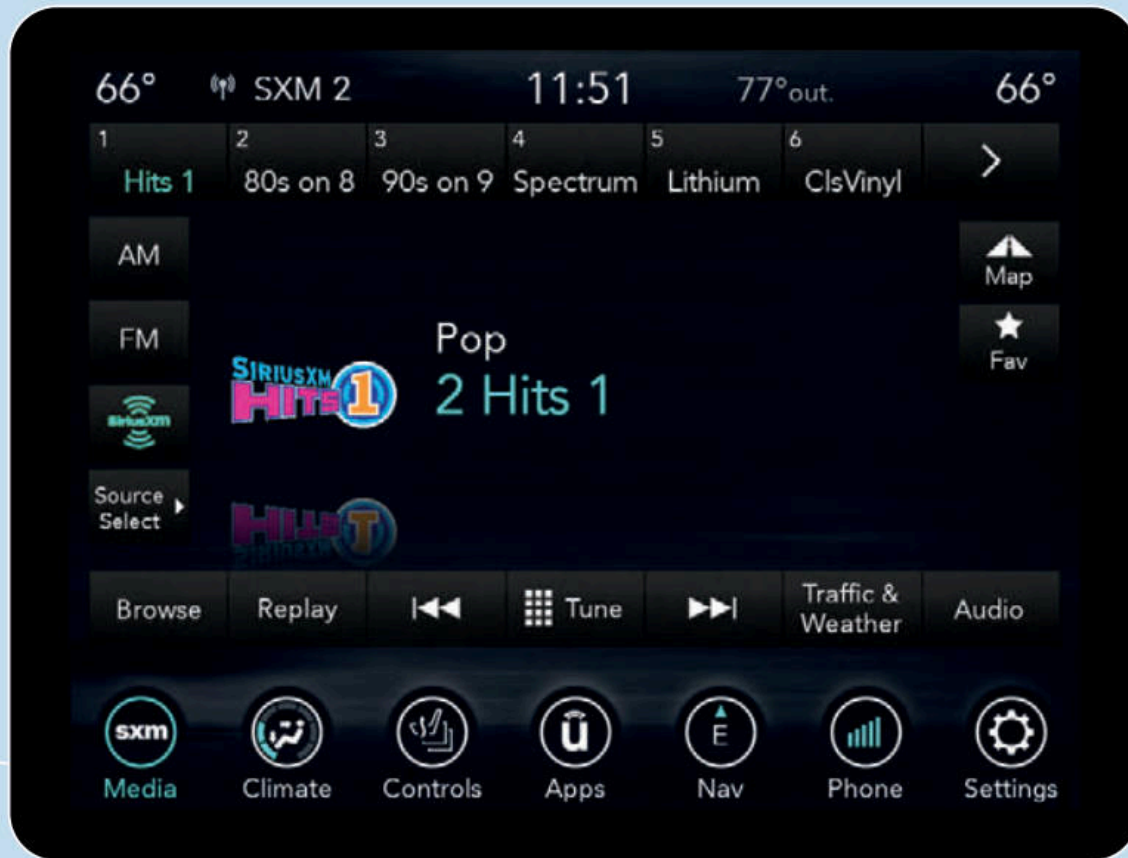
Bring the best of Google with you in your Uconnect system. Talk to Google on Android Auto^{™10} and get things done with your voice so you can keep your focus on driving. Easily send messages, get directions, control media and more. Just say, "Hey Google" or long-press the voice control button on your steering wheel. Standard.



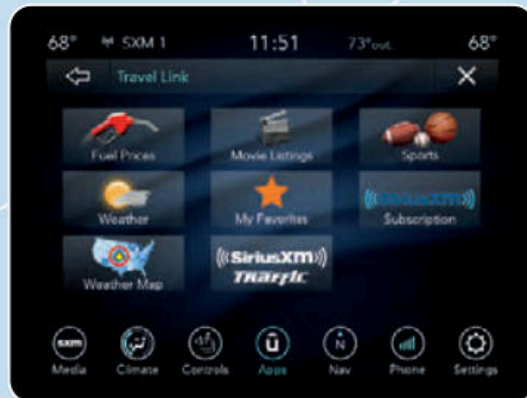
YOUR TIME. YOUR PLACE. YOUR WI-FI.

DRIVEUCONNECT.COM

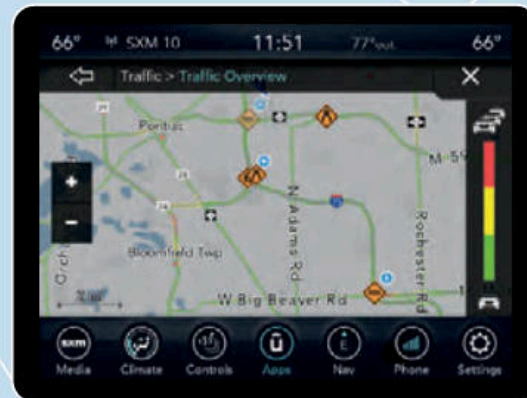
SIRIUSXM® RADIO¹¹



SIRIUSXM TRAVEL LINK¹²



SIRIUSXM TRAFFIC PLUS¹²



Uconnect®

Trips are enhanced with informative and entertaining apps. Access them on your Uconnect® touchscreen as well as your smartphone. Connected technology keeps you linked to a whole new world.

(((SiriusXM)))

Listen to your favorite playlist from your connected device, then flip to SiriusXM Radio¹¹ and enjoy the best commercial-free music, plus every major sport and the biggest names in entertainment, news and comedy. You'll get over 150 channels, all at the press of a button. With the SiriusXM All Access¹¹ package, you get every channel available on your satellite radio, and you can also listen wherever you go on your portable devices with the SiriusXM App,¹¹ which is included with your trial subscription. Available.

SiriusXM TRAVEL LINK

Access useful information when you need it, right at your fingertips. Get detailed weather maps, five-day forecasts and severe weather alerts, as well as sports scores and in-game weekly schedules on your favorite teams, information on fuel prices in your area and more. Your first five years of SiriusXM Travel Link¹² service are included. Available.

SiriusXM TRAFFIC PLUS

Avoid congestion before you reach it. Get continuous updates on traffic speed, accidents, construction, road closures and more before you begin your travels. You will get to your destination faster and more easily than ever before. Your first five years of SiriusXM Traffic Plus¹² service are included. Available.

Uconnect® + SiriusXM GUARDIAN™

Drive worry-free with SiriusXM Guardian™¹³ — a premium suite of safety and convenience services that can be accessed in-vehicle or through the Uconnect® App.¹⁴ Includes a one-year trial. Standard.

SiriusXM Guardian¹³ Services + Uconnect App

1. **AUTOMATIC SOS (ASOS)¹⁵** In the event of an incident that results in air bag¹⁶ deployment, hands-free ASOS¹⁵ will automatically call an emergency call center. Seconds later, a live agent will contact you through the Uconnect system and alert emergency services. If you are unable to respond, emergency services will be directed to your GPS location.
2. **ROADSIDE ASSISTANCE CALL¹⁷** puts you in touch with an agent who can get you help while you're out on the road.
3. **LOCK/UNLOCK** your car from virtually anywhere.
4. **START YOUR CAR REMOTELY¹⁸**
5. **FLASH THE LIGHTS & SOUND THE HORN** to help find your car.
6. **VEHICLE FINDER¹⁹** allows you to locate your vehicle on a map.
7. **SEND & GO²⁰** enables you to send destinations to your navigation system.
8. **THEFT ALARM NOTIFICATION²¹** Receive alerts by text, email or push notification if your vehicle's available theft alarm is triggered.
9. **STOLEN VEHICLE ASSISTANCE²²**
10. **FAMILY DRIVE ALERTS²³** Peace of mind when you hand over the keys. Allows you to set parameters to receive notifications when others are operating your vehicle.
 - **Boundary Alert** Be alerted the moment your vehicle is driven out of up to five geographic boundaries that you set
 - **Curfew Alert** Be alerted if your car is being driven outside of the curfew you set
 - **Speed Alert** Receive a notification whenever your car exceeds a speed limit you set
 - **Valet Alert** Be alerted the moment your vehicle is driven outside of a defined radius



“Alexa, ask Chrysler to start my car.”

“Alexa, ask Chrysler how much gas is in my car.”

“Alexa, ask Chrysler to find the nearest gas station.”

“Alexa, ask Chrysler to send (address) to my car.”

Hey Google, ask Chrysler to start my car

Hey Google, ask Chrysler how much gas is in my car

Hey Google, ask Chrysler to find the nearest gas station

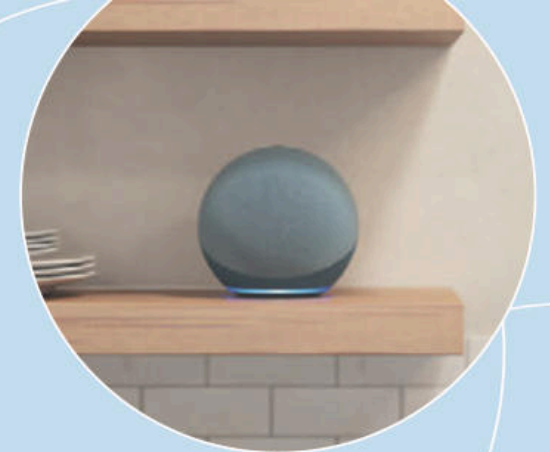
Hey Google, ask Chrysler to send (address) to my car



Conveniently command your vehicle using your voice with the Chrysler Skill²⁴ for Amazon Alexa on an Alexa-enabled device from the comfort of your home! Just ask Alexa to start/stop the engine, lock/unlock the doors, check fuel status or tire pressure and more. With available Uconnect[®] Navigation, you can also ask Alexa to find a business and send the address directly to your vehicle.



Remotely voice control your vehicle from any Google Assistant-enabled device with the Chrysler Action on Google. Simply ask Google to start/stop the engine, lock/unlock the doors, check fuel status or tire pressure and more. With available Uconnect Navigation, you can also ask Google to find restaurants, gas stations and other destinations and send the addresses directly to your vehicle for added convenience.



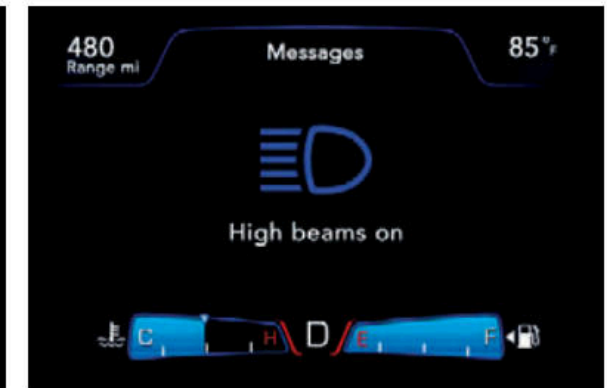
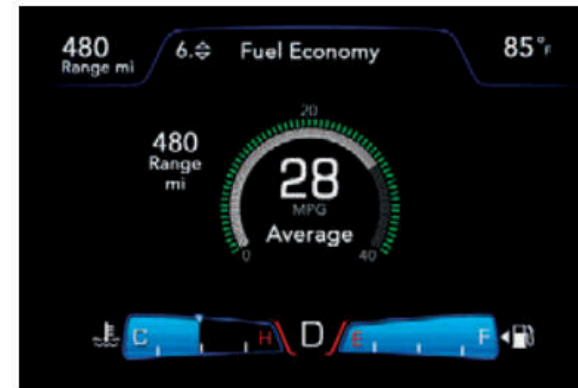


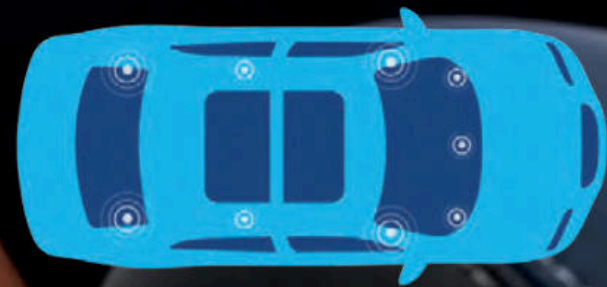
Steering wheel controls

Centrally located control buttons on the steering wheel provide ease of operation for the standard 8.4-inch Uconnect® touchscreen, as well as the audio, voice and speed controls. The cruise settings include the available Adaptive Cruise Control (ACC+) with Stop,²⁵ which allows you to select one of four distance increments behind other vehicles. The Electric Power Steering on 300S models provides three available driver-selectable steering modes: Normal, Comfort and Sport, allowing for more responsive steering for spirited driving while maintaining ease at low speeds and parking.

Driver Information Display (DID) screens

The full-color DID in the instrument cluster, with configurable graphics, is seamlessly integrated with cluster analog instruments. The distinctive blue-ambient display allows for a wide range of settings, including audio, speed, compass, temperature, fuel economy, trip, cruise control, vehicle status and engine performance, all adding up to over 7,000 available driver configurations.

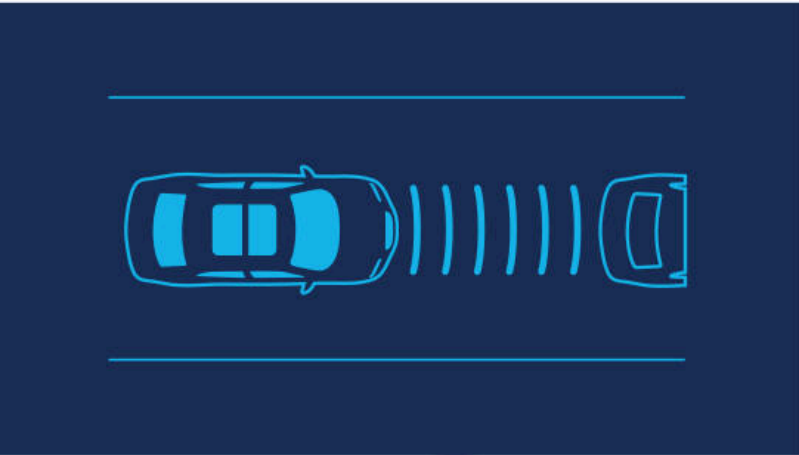




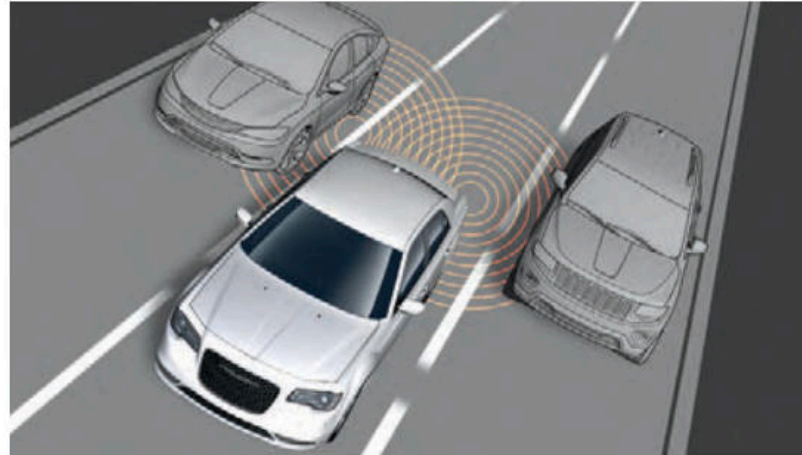
Dial up the acoustics

The nine premium Alpine® speakers, available on 300 Touring L and 300S, give a powerful and highly tuned audio experience. The nine-speaker multichannel Surround Sound includes a trunk-mounted subwoofer and a 506-watt amplifier.

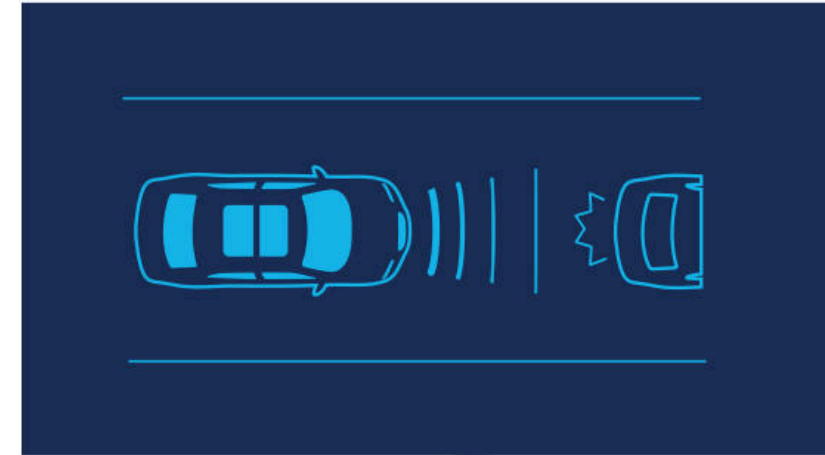
AVAILABLE ADAPTIVE CRUISE CONTROL WITH STOP²⁵



AVAILABLE BLIND SPOT MONITORING²⁶



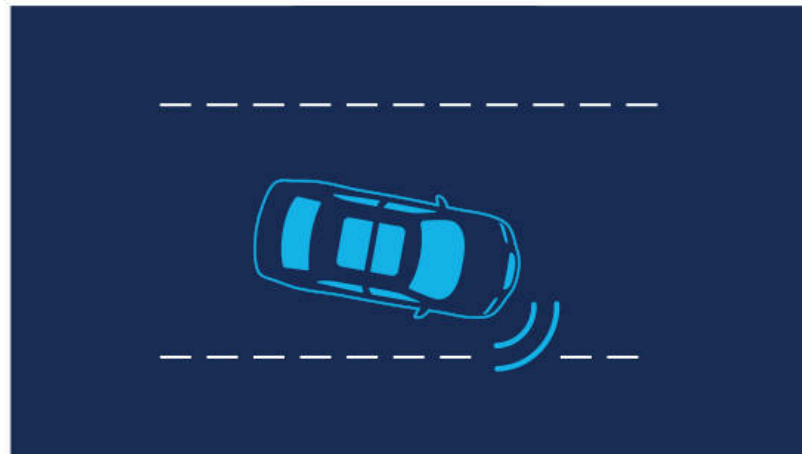
AVAILABLE FULL-SPEED FORWARD COLLISION WARNING PLUS²⁷



EQUIPPED TO PROTECT WITH 80+ STANDARD AND AVAILABLE SAFETY AND SECURITY FEATURES



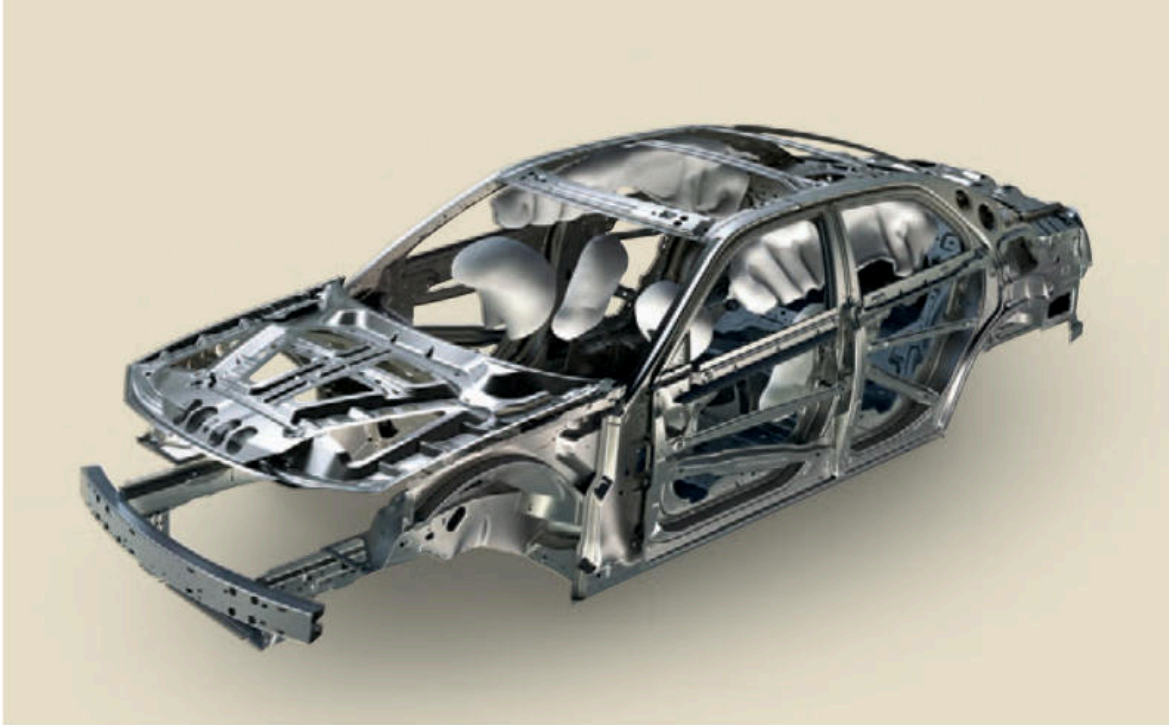
AVAILABLE REAR CROSS-PATH DETECTION²⁸



AVAILABLE LANESENSE®
LANE DEPARTURE WARNING WITH LANE KEEP ASSIST²⁹



AVAILABLE PARKSENSE® FRONT
AND REAR PARK ASSIST³⁰



Structural integrity

Safety cage

The body frame strategically mixes and positions advanced high-strength steels, resulting in outstanding occupant protection in the event of front, side or rear impact.

Side-guard door beams

Reinforcement beams inside the door help provide occupant protection in side collisions.

Crumple zones

The front and rear crumple zones are specially formed structural members that crumple and absorb energy in a collision, helping to protect the cabin occupants.

7

STANDARD

AIR BAGS¹⁶

Peace of mind

Seven standard air bags¹⁶

The standard air bags include front multistage air bags with adaptive venting technology, a driver knee air bag, as well as front-seat-mounted side-impact air bags. The side air bag inflatable curtains extend over front- and rear-seat rows.

Advanced multistage front air bags¹⁶

Advanced multistage front air bags sense impact severity and size of occupant to inflate with different levels of force for added security.





300 TOURING

300 Touring: Select standard equipment

powertrain

292-hp 3.6L Pentastar® Variable Valve Timing (VVT) V6 with 8-speed automatic transmission and Rear-Wheel Drive (RWD)/All-Wheel Drive (AWD)
4-wheel independent Touring suspension
4-wheel independent AWD suspension (AWD)

exterior

17-inch cast aluminum wheel, painted Fine Silver (RWD)
19-inch cast aluminum wheel, fully polished (AWD)
Acoustic windshield and front-door glass
Body-color mirror caps and door handles
Automatic halogen projector headlamps with Chrome bezels
LED daytime running lamps (DRLs)
Chrome LED taillamps
Bright Chrome surround with Black grille
Dual exhaust with bright tips
Power, heated mirrors

interior

Cloth seats
Power driver's seat with 4-way power lumbar adjust
60/40 split-folding rear bench seat
Tilt/telescoping steering column
Leather-wrapped steering wheel
Uconnect® 4C with 8.4-inch display
6 speakers
Integrated Voice Command with Bluetooth®
Bluetooth Streaming Audio
SiriusXM® Radio¹¹ with 6-month trial
SiriusXM Guardian™¹³ with 1-year trial
Media Hub (2 USB ports and auxiliary input)
Rotary E-shifter
Remote proximity keyless entry with push-button start
Dual-Zone Automatic Temperature Control (ATC)
Speed control
ParkView® Rear Back-Up Camera²⁸
Security alarm³¹



300 TOURING L

300 Touring L: Select standard equipment over 300 Touring

exterior

18-inch cast aluminum wheel, fully polished (RWD)
19-inch cast aluminum wheel, fully polished (AWD)
Front LED fog lamps
Power, heated mirrors with courtesy lamps, supplemental turn signals and auto-dimming on driver's side
Blind Spot Monitoring²⁶ and Rear Cross-Path Detection²⁸

interior

Nappa leather-trimmed bucket seats
Power passenger seat with 4-way power lumbar adjust
Heated front seats
Remote Start System³²
Universal Garage Door Opener
ParkSense® Front and Rear Park Assist³⁰ System



300S

300S: Select standard equipment over 300 Touring L

powertrain

300-hp 3.6L Pentastar VVT V6 with 8-speed automatic transmission
Optional 5.7L HEMI® V8 with 8-speed automatic transmission
Performance-tuned suspension
Sport mode

exterior

20-inch cast aluminum wheel, fully painted Black Noise
Headlamps with Black bezels
Black LED taillamps
Black Chrome surround with Gloss Black grille
Gloss Black daylight opening (DLO) surround moldings
Chrysler wing badge with Red accents
S Model Appearance Package with 5.7L HEMI V8

interior

Nappa leather-trimmed Sport bucket seats
Steering wheel-mounted paddle shifters
6 Premium Alpine® speakers with 276-watt amplifier
Piano Black accents



CHRYSLER 300 WHEELS



**17-INCH CAST ALUMINUM
WHEEL, PAINTED FINE SILVER**
Standard on 300 Touring
(WF6)



**18-INCH CAST ALUMINUM
WHEEL, FULLY POLISHED**
Standard on 300 Touring L
Optional on 300 Touring
(WPC)



**19-INCH CAST ALUMINUM
WHEEL, FULLY POLISHED**
Standard on 300 Touring AWD
and 300 Touring L AWD
(WPY)



**20-INCH CAST ALUMINUM
WHEEL, FULLY POLISHED**
Optional on 300 Touring
and Touring L
(WFY)



**19-INCH CAST ALUMINUM
WHEEL, FULLY PAINTED
BLACK NOISE**
Optional on 300 Touring AWD
and 300 Touring L AWD
(WAK)

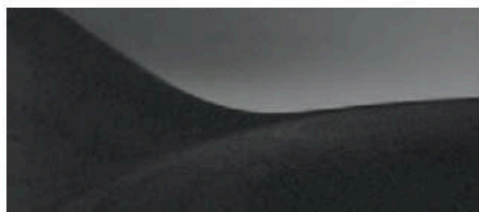


**20-INCH CAST ALUMINUM
WHEEL, FULLY PAINTED
BLACK NOISE**
Standard on 300S
Optional on 300 Touring
and 300 Touring L
(WHG)

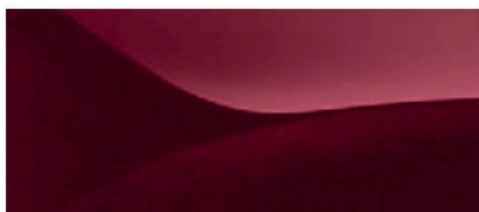
EXTERIOR COLORS



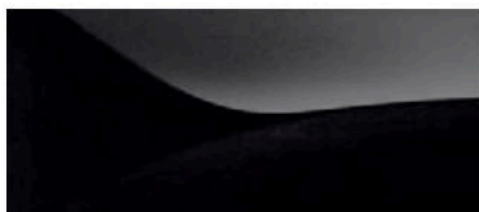
Silver Mist



Granite Crystal



Velvet Red Pearl Coat



Gloss Black



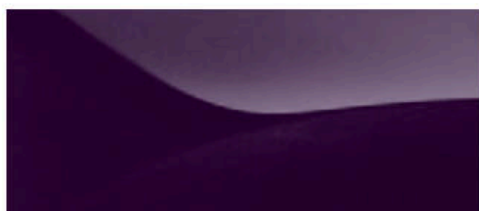
Frostbite³³



Ocean Blue³³



Canyon Sunset



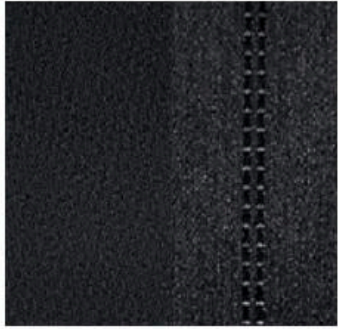
Amethyst³³



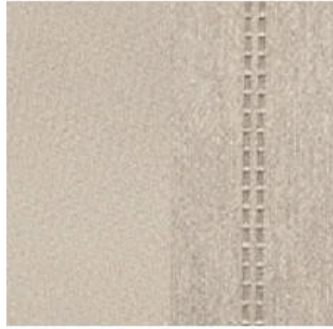
Bright White



INTERIOR COLORS



Black cloth with Black stitching —
Standard on 300 Touring



Linen cloth with Linen stitching —
Standard on 300 Touring



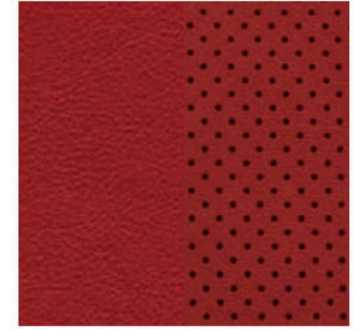
Black Nappa leather trim with
Black stitching —
Standard on 300 Touring L



Black / Smoke Nappa leather trim with
Axis II perforated insert and Light Diesel
stitching / embroidered logo —
Packaged with 300S Comfort Group



Radar Red Nappa leather trim with
embroidered logo and Light
Diesel stitching —
Standard on 300S



Radar Red Nappa leather trim with Axis II
perforated insert and Light Diesel
stitching / embroidered logo —
Optional on 300S; Packaged with
300S Comfort Group



Linen Nappa leather trim with
Linen stitching —
Standard on 300 Touring L



Linen Nappa leather trim with Axis II
perforated insert —
Packaged with 300 Touring L
Comfort Group



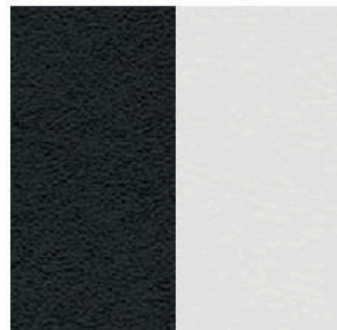
Black Nappa leather trim with Axis II
perforated insert —
Packaged with 300 Touring L
Comfort Group



Black Nappa leather trim with embroidered
logo and Light Diesel stitching —
Standard on 300S



Black Nappa leather trim with Axis II
perforated insert and Light Diesel
stitching / embroidered logo —
Packaged with 300S Comfort Group



Black / Smoke Nappa leather trim
with embroidered logo and Light
Diesel stitching —
Standard on 300S

CHRYSLER 300 SPECIFICATIONS

	300 TOURING	300 TOURINGL	300S
ENGINES AND TRANSMISSIONS			
3.6L Pentastar® V6 Variable Valve Timing (VVT) with 8-speed automatic transmission	S	S	S
5.7L HEMI® V8 VVT with Fuel Saver Technology and interactive Decal Fuel Shut-Off (iDFSO) with 8-speed automatic transmission	–	–	O
MECHANICAL FEATURES			
All-Wheel Drive (AWD) with Front-Axle Disconnect	O	O	–
Alternators – 160-amp	S	S	–
– 180-amp (included with SafetyTec™ Plus Group)	–	P	S
Battery – 730-amp, maintenance-free	S	S	S
Brakes – Four-wheel disc antilock – Includes All-Speed Traction Control	S	S	S
– Performance – Vented front and solid rear discs (included with 5.7L HEMI V8 engine and AWD)	P	P	P
Exhaust System – Dual exhaust with bright exhaust tips	S	S	S
Fuel-Filler System – Capless, with remote fuel-door release	S	S	S
Fuel Tank – 18.5-gallon	S	S	S
Remote Keyless Proximity Entry with Push-Button Ignition System	S	S	S
Speed Control	S	S	S
Sport Mode – Selectable Sport-tuned transmission shift points (includes steering wheel-mounted shift controls (paddle shifters))	–	–	S
Steering – Electric	S	S	S
Suspension (four-wheel independent) – Touring-tuned suspension	S	S	–
– Performance	–	–	S
– Sport-tuned suspension (included on 300S with 5.7L HEMI V8)	–	–	P
– Comfort-tuned suspension	O	O	–
– AWD Touring-tuned suspension (included with AWD)	P	P	–
Tip Start System	S	S	S
EXTERIOR FEATURES			
Badging – Chrome finish	S	S	–
– Black Noise Chrysler wing badge with Black accent (included with Sport Appearance Package)	P	P	–
– AWD	P	P	–
– Chrome Chrysler wing badge with Blue accent	S	S	–
– Black Noise Chrysler wing badge with Red insert	–	–	S
Cladding – Lower bodyside	S	S	S
Door Handles – Body-color	S	S	S
Glass – Acoustic windshield and front doors; Solar-Control front and rear windows	S	S	S
Grille – Black grille with bright surround	S	S	–
– Black grille with Black Chrome surround (included with Sport Appearance Package)	P	P	S
– Platinum grille with Platinum surround (included with Chrome Appearance Package)	P	P	–
Headlamps – Adaptive Bi-xenon High Intensity Discharge (HID) with delay and automatic leveling system (included with Comfort Group)	–	P	P
– Bifunctional halogen projector with delay (not available with adaptive Bi-xenon HID)	S	S	S
– LED daytime running headlamps	S	S	S

S = Standard O = Optional P = Available within Package – = Not Available

	300 TOURING	300 TOURINGL	300S
EXTERIOR FEATURES (continued)			
– Auto High-Beam Headlamp Control (included with SafetyTec Plus Group)	–	P	P
– Automatic	S	S	S
– Black headlamp bezels (included with Sport Appearance Package)	P	P	S
– Chrome headlamp bezels	S	S	–
LED Fog Lamps (included with Driver Convenience Group)	P	S	S
Premium Fog Lamps (included with Sport Appearance Package on Touring L and S Model Appearance Package on 300S)	–	P	P
Mirrors – Body-color	S	S	S
– Chrome	P	P	–
– Black (included with Sport Appearance Package)	P	–	–
– Auto-adjust-in-Reverse (included with Comfort Group)	–	P	P
– Blind Spot Monitoring ²⁶ and Rear Cross-Path Detection ²⁸	–	S	S
– Courtesy lamp	–	S	S
– e-Chromic auto-dimming (driver's side only)	–	S	S
– Memory (driver's seat, power tilt/telescoping steering column, when equipped, exterior mirrors and radio; included with Comfort Group)	–	P	P
– Power adjust/manual foldaway, heated	S	S	S
– Supplemental turn signal	–	S	S
Tires – P215/65R17 Low-rolling Resistance	S	–	–
– P225/60R18 BSW Touring (included with Driver Convenience Group)	P	S	–
– 235/55R19 BSW All-Season (included with AWD)	S	S	–
– 235/55R19 BSW All-Season Performance (optional with AWD)	O	O	–
– 245/45R20 BSW All-Season Performance (included with 20-inch wheels)	P	P	S
– Compact spare	S	S	S
Wheels – 17-inch Fine Silver (WF6)	S	–	–
– 18-inch polished aluminum (included with Driver Convenience Group) (WPC)	P	S	–
– 19-inch polished aluminum (included with AWD) (WPY)	P	P	–
– 19-inch Black Noise (included with Sport Appearance Package on AWD) (WAK)	P	P	–
– 20-inch polished aluminum (included with Chrome Appearance Package) (WFY)	P	P	–
– 20-inch Black Noise (included with Sport Appearance Package) (WHG)	P	P	S
Windows – Power with driver's and front-passenger one-touch auto up/down and anti-pinch feature	S	S	S
Wipers – Two-speed variable/intermittent	S	S	S
– Rain-sensing (included with SafetyTec Plus Group)	–	P	P
INTERIOR FEATURES			
Air Conditioning – Dual-Zone Automatic Temperature Control (ATC) with humidity sensor	S	S	S
Air Filtration – Particulate air filter	S	S	S
Defroster – Rear-window	S	S	S
Door Locks – Power, speed-sensitive; rear child-protection	S	S	S
Floor Mats – Front and rear	S	S	S
Interior Accents – Charcoal wood hydrographic	S	S	–
– Black Olive Ash Burl	–	P	–

CHRYSLER 300 SPECIFICATIONS (continued)

	300 TOURING	300 TOURINGL	300S
INTERIOR FEATURES (continued)			
— Piano Black/Satin Chrome	—	—	S
— Piano Black bezels	—	—	S
— Satin Chrome bezels	S	S	—
Lighting — Glove box, trunk, front reading and map lamps, rear reading and courtesy lamps	S	S	S
— LED driver's and front-passenger lower front footwell lamps (included with Comfort Group)	—	P	P
— LED-illuminated front and rear map pockets (included with Comfort Group)	—	P	P
— LED-illuminated front cup holders	S	S	S
— LED-illuminated rear cup holders (included with Comfort Group)	—	P	P
Memory System — Memory settings for two drivers for the driver's seat, power tilt/telescoping steering column (when equipped), exterior mirrors and radio (included with Comfort Group)	—	P	P
Mirrors — Rearview, auto-dimming	S	S	S
— Visor vanity, illuminated, driver's- and passenger-side	S	S	S
Passenger Assist Handles — Front, with illuminated rear assist handles	S	S	S
Power Accessory — 12-volt power outlets in center front instrument panel, center console and back of center console, with delay feature	S	S	S
Power Backlight Sunshade (included with Comfort Group)	—	P	P
Shift Knob — Rotary	S	S	S
Speedometer — 140-mph	S	S	S
— 160-mph (included with 5.7L HEMI® V8)	—	—	P
Steering Column — Manual tilt/telescoping	S	S	S
— Power tilt/telescoping with memory (included with Comfort Group)	—	P	P
Steering Wheel — Leather-wrapped	S	S	S
— Heated (included with Comfort Group)	—	P	P
— Steering wheel-mounted audio controls	S	S	S
— Steering wheel-mounted shift controls (paddle shifters)	—	—	S
Sunroof — Dual-pane panoramic full-power front and fixed rear, with one-touch open/close feature (included with Popular Equipment Group)	—	P	O/P
Temperature Display — Outside reading, with compass	S	S	S
Seats — Eight-way power driver's seat with four-way power lumbar adjust	S	—	—
— Eight-way power driver's and front-passenger seats with four-way power lumbar adjust	—	S	S
— Heated front (included with leather-trimmed bucket seats; not included with cloth seats)	—	S	S
— Heated second-row (included with Comfort Group)	—	P	P
— Cloth bucket (*A8)	S	—	—
— Nappa leather-trimmed bucket (*E6)	—	S	—
— Nappa leather-trimmed Sport bucket (*G7)	—	—	S
— Nappa leather-trimmed Sport bucket with perforated inserts and accent stitching (included with Comfort Group) (*LL)	—	—	P
— Nappa perforated leather-trimmed bucket (included with Comfort Group) (*AL)	—	P	—
— Rear 60/40 split-folding rear bench with armrest and cup holders	S	—	—

S = Standard O = Optional P = Available within Package — = Not Available

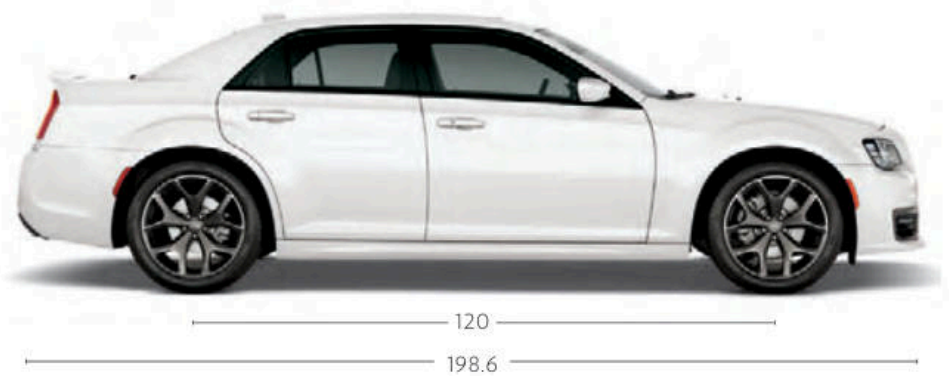
	300 TOURING	300 TOURINGL	300S
INTERIOR FEATURES (continued)			
— Rear 60/40 split-folding rear bench with armrest, lit cup holders and storage (included with Comfort Group)	—	P	P
— Ventilated front (included with Comfort Group)	—	P	P
UCONNECT® MULTIMEDIA			
Audio Systems — Six speakers	S	S	—
— Six Premium Alpine® speakers with 276-watt digital amplifier (included with SafetyTec™ Plus Group and Comfort Group)	—	P	S
— Nine Premium Alpine speakers with trunk-mounted subwoofer, 506-watt amplifier and Surround Sound system (included with Popular Equipment Group on Touring L and 300S; included with 5.7L HEMI V8 on 300S)	—	P	P
Uconnect 4C with 8.4-inch Touchscreen Display — AM/FM/HD radio system with Apple CarPlay® and Android Auto,™10 SiriusXM® Radio with six-month trial included,†1 Integrated Voice Command with Bluetooth®, 8.4-inch touchscreen for displaying music, climate controls and vehicle information, Bluetooth and Bluetooth streaming audio, and Media Hub with audio jack and two USB ports ⁴	S	S	S
Uconnect 4C NAV with 8.4-inch Touchscreen Display and Navigation — AM/FM/HD radio system with Apple CarPlay® and Android Auto,™10 SiriusXM Radio with six-month trial included,†1 five-year trial services of SiriusXM Travel Link ¹² and SiriusXM Traffic Plus ¹² Integrated Voice Command with Bluetooth, 8.4-inch touchscreen for displaying music, climate controls and vehicle information, Bluetooth and Bluetooth streaming audio, and Media Hub with audio jack and two USB ports ⁴ (included with Popular Equipment Group on Touring L and 300S; included with 5.7L HEMI V8 on 300S)	—	P	O/P
SiriusXM Guardian™13 with One-Year Trial Services Included	S	S	S
SAFETY & SECURITY			
Active Front Head Restraints ³⁴	S	S	S
Adaptive Cruise Control with Stop ²⁵ (included with SafetyTec Plus Group)	—	P	P
Air Bags ¹⁶ — Advanced multistage driver's and front-passenger	S	S	S
— Driver's-side inflatable knee bolster	S	S	S
— Supplemental side-curtain for front and rear outboard occupants	S	S	S
— Supplemental front-seat side	S	S	S
Child Seat Anchor System (LATCH) — Three mounts for child seats in the second row help ease the installation of compatible aftermarket child seats	S	S	S
Electronic Stability Control (ESC) ³ — Includes Rain Brake Support, Electronic Roll Mitigation, Trailer Sway Damping, ³⁵ Ready Alert Braking, Hill Start Assist and All-Speed Traction Control	S	S	S
Front-Passenger Seat Belt Alert	S	S	S
Full-Speed Forward Collision Warning (FCW) with Active Braking ²⁷ (included with SafetyTec Plus Group)	—	P	P
ParkView® Rear Back-Up Camera ²⁸	S	S	S
Remote Start System ³² (included with Driver Convenience Group)	P	S	S
SafetyTec Plus Group — Includes 180-amp alternator on Touring L model, Advanced Brake Assist, rain-sensing windshield wipers, LaneSense® Lane Departure Warning with Lane Keep Assist, ²⁹ Auto High-Beam Headlamp Control, Full-Speed FCW Plus ²⁷ Adaptive Cruise Control (ACC+) with Stop, ²⁵ and six Premium Alpine speakers on Touring L model	—	O	O
Security Alarm ³¹	S	S	S
Sentry Key® Theft-Deterrent System — Antitheft engine immobilizer	S	S	S
Tire-Pressure Monitoring Display — Located in the 7-inch reconfigurable Driver Information Display (DID)	S	S	S

CHRYSLER 300 SPECIFICATIONS (continued)

	300 TOURING	300 TOURING L	300S
PACKAGES/EQUIPMENT GROUPS			
Popular Equipment Group — Includes dual-pane panoramic sunroof, Uconnect® 4C NAV with 8.4-inch touchscreen display and navigation with five years of SiriusXM® Traffic Plus ² and SiriusXM Travel Link ² service, nine Premium Alpine® speakers with trunk-mounted subwoofer, 506-watt amplifier and Surround Sound system	—	○	○
Comfort Group — Includes trunk mat, auto-adjust-in-Reverse driver's mirrors, ventilated leather-trimmed seats, adaptive Bi-xenon High Intensity Discharge (HID) headlamps with automatic leveling system, door sill scuff pads, driver's and front-passenger footwell LED lamps, front and rear LED-illuminated map pockets, heated rear seats, heated steering wheel, power backlight sunshade, power tilt/telescoping steering column, memory on driver's seat, power tilt/telescoping steering column, exterior mirrors and radio, six premium Alpine speakers on Touring L, and rear storage armrest with LED-illuminated cup holders	—	○	○
Driver Convenience Group — Includes 18-inch polished aluminum wheels on Rear-Wheel Drive (RWD), front LED fog lamps, Remote Start System ³² and Universal Garage Door Opener	○	—	—
Chrome Appearance Package — Includes chrome-capped power heated mirrors, Chrysler wing badging, chrome daylight opening (DLO) moldings, Platinum grille with Platinum surround and 20-inch polished aluminum wheels	○	○	—
Sport Appearance Package — Includes Black Noise wing badge with Black insert, Gloss Black front fascia appliqué (Touring), body-color performance front fascia with LED fog lamps (Touring L only), Black LED taillamps, Black headlamp bezels, Gloss Black DLO moldings, Black with Black Chrome surround grille, and 20-inch Black Noise aluminum wheels on RWD and 19-inch Black Noise aluminum wheels on AWD (not available with Chrome Appearance Package)	○	○	—
S Model Appearance Package — Includes premium fog lamps, body-color performance front fascia, rear body-color spoiler and Gloss Black fascia appliqué (included with 5.7L HEMI® V8 on 300S)	—	—	○/P
Mopar Interior Appearance Group — Includes Mopar Premium Floor Mats with Logo, premium Black carpet cargo mat, Mopar Bright Door Sills and bright pedals (not available with Popular Equipment Group or trunk-mounted subwoofer)	○	○	○

S - Standard ○ - Optional P - Available within Package — - Not Available

CHRYSLER 300 DIMENSIONS (inches)



AUTHENTIC CHRYSLER ACCESSORIES



When it comes to 300, not all parts and accessories are created equal. As the official service, parts and customer care provider for the Chrysler Brand, only Mopar® Parts and Accessories can ensure the proper fit, finish and functionality. That's because they're original equipment, engineered by the same people who designed your vehicle, which means you can personalize your ride with complete confidence. Learn more at mopar.com

Vehicle is shown with License Plate Frame, Rear Spoiler, Molded Splash Guards, 20-inch 5-Spoke Black Chrome R/T Wheels, Side Window Air Deflectors and Matte Black Pinstripe Graphic

mopar.com



WARRANTIES

Chrysler Brand vehicles are covered by an FCA US LLC 3-Year or 36,000-Mile Basic Limited Warranty⁵⁶ (excludes normal maintenance and wear items) as well as a 5-Year or 60,000-Mile Powertrain Limited Warranty⁵⁷ that is fully transferable and includes Roadside Assistance Services: Flat Tire, Lockout, Towing, Out of Gas/Fuel Delivery and Battery Jump Assistance. Ask your dealer for details and a copy of these limited warranties.

DRIVEABILITY PROGRAM

The FCA US LLC DriveAbility Program provides aftermarket reimbursement incentives on adaptive vehicle upfit equipment in order to help provide safe and reliable vehicle modifications to enhance accessibility for all people. For more information, call (800) 255-9877 or visit fcausdriveability.com

MOPAR® OWNER'S SITE & COMPANION APP

Get all of the resources you need to make owning your Chrysler Brand vehicle the best experience possible. Schedule service directly with your preferred dealer, create a custom online dashboard tailored to you and your vehicle, and access personalized resources, including your Owner's Manual, Vehicle Health Report, special offers and more — anytime, anywhere. Register your vehicle at mopar.com or download the Mopar, Owner's Companion App today.

MOPAR VEHICLE PROTECTION® PLANS

A variety of Protection Plans accepted at all FCA US LLC dealerships have been designed to meet the needs of your unique lifestyle on the road. We stand behind every extended protection plan with certified, factory-trained technicians and the use of original equipment parts. Ask for a Mopar Vehicle Protection Plan at your dealership, call (800) 442-2666 or visit mopar.com

JOIN IN

Join fellow enthusiasts and tell your story by posting comments, participating in discussions and sharing your Chrysler Brand vehicle photos and videos. Join our community on Facebook (facebook.com/Chrysler), follow us on Twitter (twitter.com/Chrysler), YouTube (youtube.com/TheChryslerChannel), and check us out on Instagram (instagram.com/Chrysler). Thank you for following.

CHRYSLER DRIVEPLUSSM MASTERCARD[®] 38

Apply today for a Chrysler DrivePlus Mastercard and, upon approval, earn a \$100 statement credit when you spend \$100 in Chrysler dealership purchases in your first billing cycle³⁸ AND earn 5% back on Chrysler dealership purchases, 2% back on gas and travel purchases, and 1% back on purchases everywhere else.³⁸ Point redemptions are worth double (2X) when you redeem toward your next Chrysler dealership service or your next Chrysler Brand vehicle purchase. Visit drivepluscard.com or visit a participating dealer to learn more.

CHRYSLER MERCHANDISE

Bring Chrysler Brand distinction to your lifestyle, both in and outside your vehicle, with apparel, personal accessories, gift cards and more. Shop the complete line at collection.chrysler.com





(1) Based on the FCA US LLC Upper Large Car segmentation. (2) Based on EPA-estimated 19 city/23 combined/30 hwy mpg 3.6L RWD V6 and 18 city/21 combined/27 hwy mpg 3.6L AWD V6. Actual mileage may vary. (3) Always drive carefully, consistent with conditions. Always wear your seat belt and obey traffic laws. (4) For supported file formats, refer to the USB Port section of the Owner's Manual or DVD. (5) The Uconnect Phone requires a mobile phone equipped with the Bluetooth Hands-Free Profile. To check phone compatibility, please visit UconnectPhone.com. (6) Requires an iPhone with Siri. Certain features are not available while the vehicle is in motion. iPhone must be within active cellular range. Customer's existing iPhone data rates apply to Internet-supported features. (7) Voice Texting feature requires a compatible mobile device enabled with Bluetooth Message Access Profile (MAP). iPhone and some other smartphones do not currently support Bluetooth MAP. Visit www.UconnectPhone.com for system and device compatibility. Ensure MAP is ON and incoming message notification is enabled. Vehicle must be registered for SiriusXM Guardian and you must fulfill minimum subscription requirements. Also requires the use of a compatible smartphone that supports text messaging and Bluetooth. Check www.UconnectPhone.com for device compatibility. (8) Three-month/1GB trial included with the purchase or lease of a new vehicle. Upon expiration of the trial period, purchase of a subscription is required. Wi-Fi Hotspot available through third-party subscription. Requires Internet-enabled mobile device. See dealer for details. This feature is not intended for use by the driver while the vehicle is in motion. Always drive carefully. (9) Requires compatible iPhone. See dealer for phone compatibility. Data plan rates apply. Vehicle user interface is a product of Apple. Apple CarPlay is a trademark of Apple Inc. iPhone is a trademark of Apple Inc., registered in the US and other countries. Apple terms of use and privacy statements apply. (10) To use Android Auto on your phone screen, you'll need an Android phone running 5.0 or higher and the Android Auto App. Google, Android, Android Auto, YouTube and other marks are trademarks of Google LLC. (11) Your service will automatically stop at the end of your trial subscription unless you decide to continue service. If you do not wish to enjoy your trial subscription, you can cancel it by calling the number below. **If you decide to continue service after your trial subscription, the subscription plan you choose will automatically renew thereafter and you will be charged according to your chosen payment method at then-current rates.** Fees and taxes apply. Please see our Customer Agreement at www.siriusxm.com for complete terms and how to cancel, which includes calling us at 1-866-635-2349. All fees, content and features are subject to change. (12) Not all vehicles or devices are capable of receiving all services offered by SiriusXM. Data displays and individual product availability vary by vehicle hardware. Current information and features may not be available in all locations, or on all receivers. Weather Forecast. Current Conditions may not be available in all locations. (13) All SiriusXM Guardian equipped vehicles come with a 12-month complimentary trial effective on the date of purchase or lease of a new vehicle. Enrollment in the trial is required to receive service. Upon expiration of the trial period, purchase of a subscription is required to continue SiriusXM Guardian. SiriusXM Guardian is available only on equipped vehicles purchased within the United States and Puerto Rico. Services can only be used where cellular coverage is available. See Uconnect and SiriusXM Guardian Terms of Service for complete service limitations. (14) You are responsible for using remote features in accordance with any laws, rules or ordinances in effect in your vehicle's location. You must have an active subscription to SiriusXM Guardian in order to use remote services. See Terms of Service for service limitations. (15) In the event of a medical or other emergency, press the SOS button to be connected to a Customer Care agent who can direct emergency assistance to your vehicle's location. (16) Always sit properly in designated seating positions with seat belts securely fastened at all times. (17) Roadside Assistance Call connects you with an agent who will provide Roadside Assistance Service. Vehicle must be within the United States, Puerto Rico or Canada and have network coverage. Additional roadside assistance charges may apply. Check warranty for details. (18) Remote Vehicle Start is not available on all vehicles. You are responsible for using remote features in accordance with any laws, rules or ordinances in effect in your vehicle's location. (19) To use Vehicle Finder, you must have the Uconnect App with SiriusXM Guardian installed on a compatible smartphone and have an active subscription to SiriusXM Guardian. (20) Send & Go requires a vehicle equipped with Navigation. To use Send & Go, you must have the Uconnect App with SiriusXM Guardian installed on a compatible smartphone and have an active subscription to SiriusXM Guardian. (21) Theft Alarm Notification is compatible with factory-installed alarms only. (22) Stolen vehicle police report required. (23) Available only on equipped vehicles with an active subscription to SiriusXM Guardian connected services (Family Drive Alerts is not available on vehicles with 12-inch touchscreen). All SiriusXM Guardian equipped vehicles come with a 12-month trial of the full suite of services effective on the date of purchase or lease of a new vehicle. Enrollment in the trial is required to receive service. Upon expiration of the trial period, purchase of a subscription is required to continue services. Services can only be used within the United States and Puerto Rico where cellular coverage is available. See coverage map for details. (24) Compatible with properly equipped Uconnect systems on eligible vehicles. Requires registration of vehicle to SiriusXM Guardian connected services and fulfillment of minimum subscription requirements. Late availability. Amazon, Alexa and all related logos and marks are trademarks of Amazon.com, Inc. or its affiliates. (25) This system is a driver convenience system, not a substitute for active driver involvement. The driver must remain aware of traffic conditions and be prepared to use the brakes to avoid collisions. (26) Always check visually for vehicles prior to changing lanes. (27) This system is an alert system for the front of the vehicle. It is not a substitute for active driver involvement. The driver must remain aware of traffic conditions and be prepared to use the brakes to avoid collisions. (28) Always check entire surroundings visually before proceeding. (29) This system is a driver convenience system, not a substitute for active driver involvement. The driver must remain aware of traffic conditions and maintain control of the vehicle. (30) Always look before proceeding. An electronic drive aid is not a substitute for conscientious driving. Always be aware of your surroundings. (31) Vehicle must be locked and system activated for alarm to sound. (32) Check state and local laws regarding the use of remote start systems. (33) Not available on 300S. (34) Always sit properly with the head restraint properly adjusted. Never place anything in front of the head restraint. (35) Always drive carefully, consistent with conditions. (36) Visit Mopar.com for complete details and a copy of the Basic Limited Warranty. (37) Visit Mopar.com for complete details and a copy of the Powertrain Limited Warranty. (38) See the Reward Terms and Conditions in the Summary of Credit Terms provided at time of application for details, including earning, redemption, expiration or forfeiture. Percentage back is earned as points.

©2020 FCA US LLC. All Rights Reserved. Chrysler, Dodge, Jeep, Ram, SRT, Chrysler 300S, 300S, 300 Touring, HEMI, the Chrysler wing design, DrivePlus, the DrivePlus design, LaneSense, Mopar, Mopar Owner Connect design, Mopar Vehicle Protection, ParkSense, ParkView, Pentastar, R/T, Sentry Key, TorqueFlite and Uconnect are registered trademarks and DriveAbility Program, Keyless Enter 'n Go, SafetyTec and Send & Go are trademarks of FCA US LLC.

Alpine and the Alpine logo are registered trademarks of Alpine Electronics, Inc. All rights reserved. Amazon, Alexa and all related logos and marks are trademarks of Amazon.com, Inc. or its affiliates. Apple, Apple Music, App Store, iPhone, iTunes and Siri are registered trademarks and Apple CarPlay is a trademark of Apple Inc. AT&T is a registered trademark of AT&T Knowledge Ventures. Bluetooth is a registered trademark of Bluetooth SIG, Inc. Facebook and logo are registered trademarks of Facebook, Inc. Google, Android, Android Auto, Google+, Google Maps, Google Play, YouTube and other related marks and logos are trademarks of Google LLC. Instagram is a registered trademark of Instagram, Inc. SiriusXM Connected Vehicles Services Inc., Sirius, XM, SiriusXM, SiriusXM Guardian and all related marks and logos are registered trademarks of SiriusXM Radio Inc. The Twitter name, logo, Twitter T, Tweet and Twitter bird are service marks of Twitter, Inc. in the United States and other countries. Cards are issued by First Bankcard, a division of First National Bank of Omaha, pursuant to a license from Mastercard International Incorporated. Mastercard is a registered trademark and the circles design is a trademark of Mastercard International Incorporated.

This brochure is a publication of FCA US LLC. All product illustrations and specifications are based upon current information at the time of publication approval. FCA US LLC reserves the right to make changes from time to time, without notice or obligation, in prices, specifications, colors and materials, and to change or discontinue models which are considered necessary to the purpose of product improvement or for reasons of design and/or marketing.

