



CHRYSLER PACIFICA

20  
20



Designed to *transform*

## Celebrating 35 years in minivan leadership.

As the most innovative minivan in its class,<sup>1\*</sup> the Chrysler Pacifica continues to reinvent for your generation and the next, offering America's first and only Hybrid minivan, Stow 'n Go<sup>®</sup> seating and storage, Uconnect<sup>®</sup> Theater with built-in games and apps, and class-exclusive<sup>2</sup> hands-free sliding doors.



\*A note about this catalog: disclosures can be found on the last page.



Here's to the moments in-between.

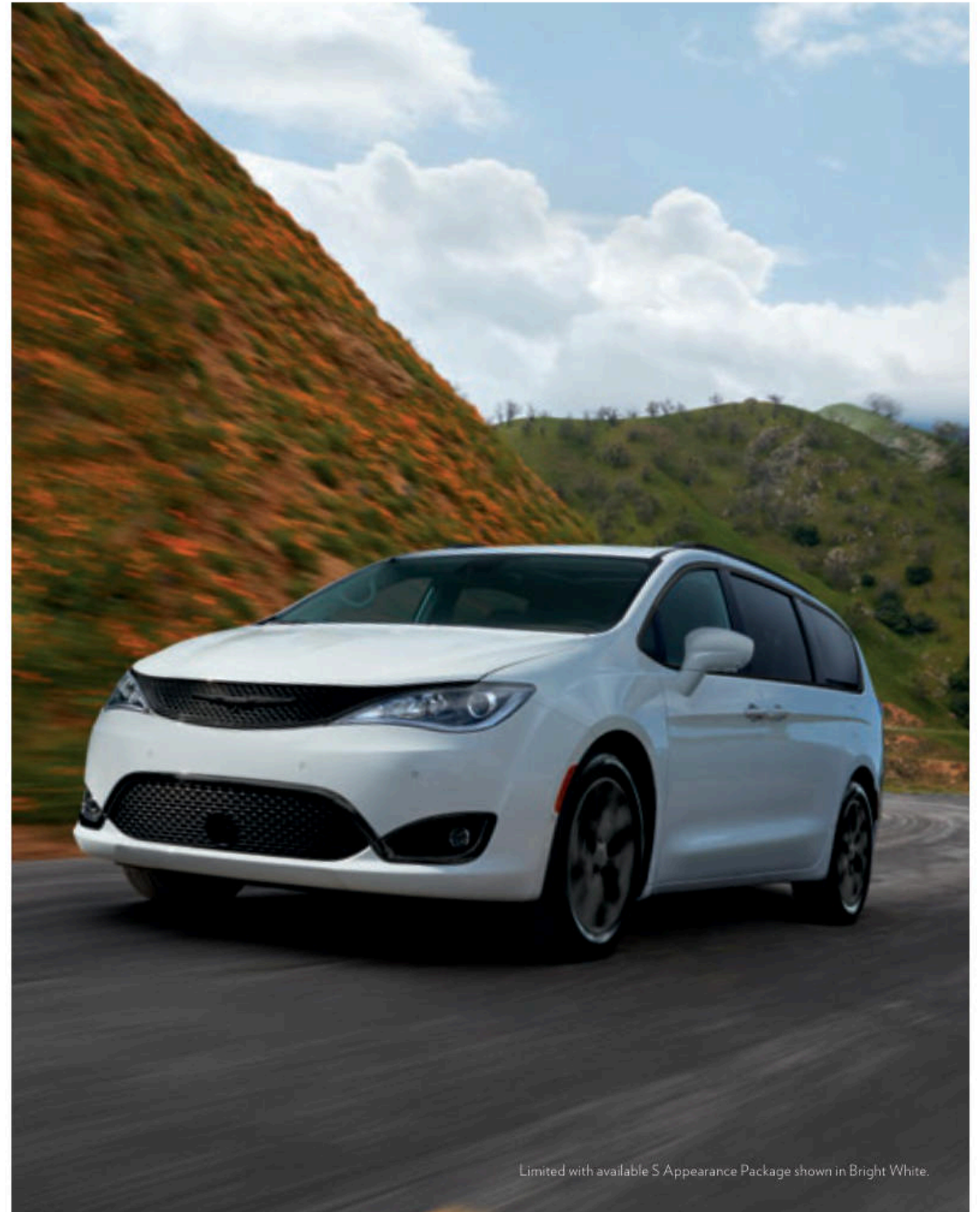
## Visionary achievement.

With innovative fuel and hybrid powertrains, top-rated standard and available safety and security features, smart technology and exclusive<sup>3</sup> seating and storage systems, Chrysler Pacifica stands as the most family-friendly minivan in its class.<sup>1</sup>

Turn-by-turn sharp.



**Here-we-go ready.** The exterior design elements integrated into the sculpted body of the Chrysler Pacifica — the bold grilles, available LED lighting and 20-inch wheels — highlight the sharp style of the aerodynamic silhouette.



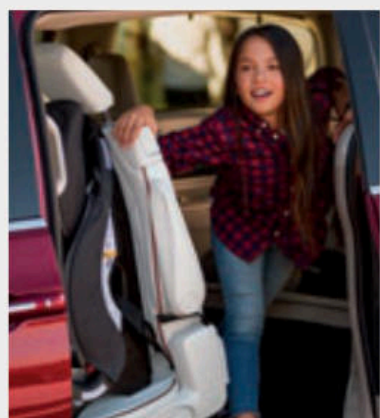
Limited with available S Appearance Package shown in Bright White.

## Where pragmatic meets pure magic.

Every ingenious feature is designed to give you the luxury of simplicity with virtually limitless versatility — where everyone and everything has its proper place. The ultimate convenience of available hands-free power-sliding doors and liftgate and other features that promote passenger independence will spark joy all around.



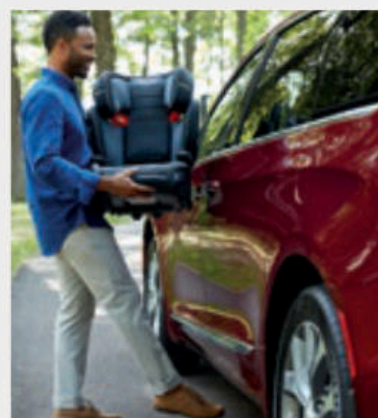
AVAILABLE STOW 'N GO® SEATING AND STORAGE SYSTEM



AVAILABLE SECOND-ROW EASY-TILT SEATING



AVAILABLE IN-FLOOR SEATING AND STORAGE



AVAILABLE HANDS-FREE POWER-SLIDING DOORS AND LIFTGATE



AVAILABLE UCONNECT® THEATER WITH BUILT-IN GAMES AND APPS



EASY CLEANUP WITH THE AVAILABLE STOW 'N VAC® VACUUM

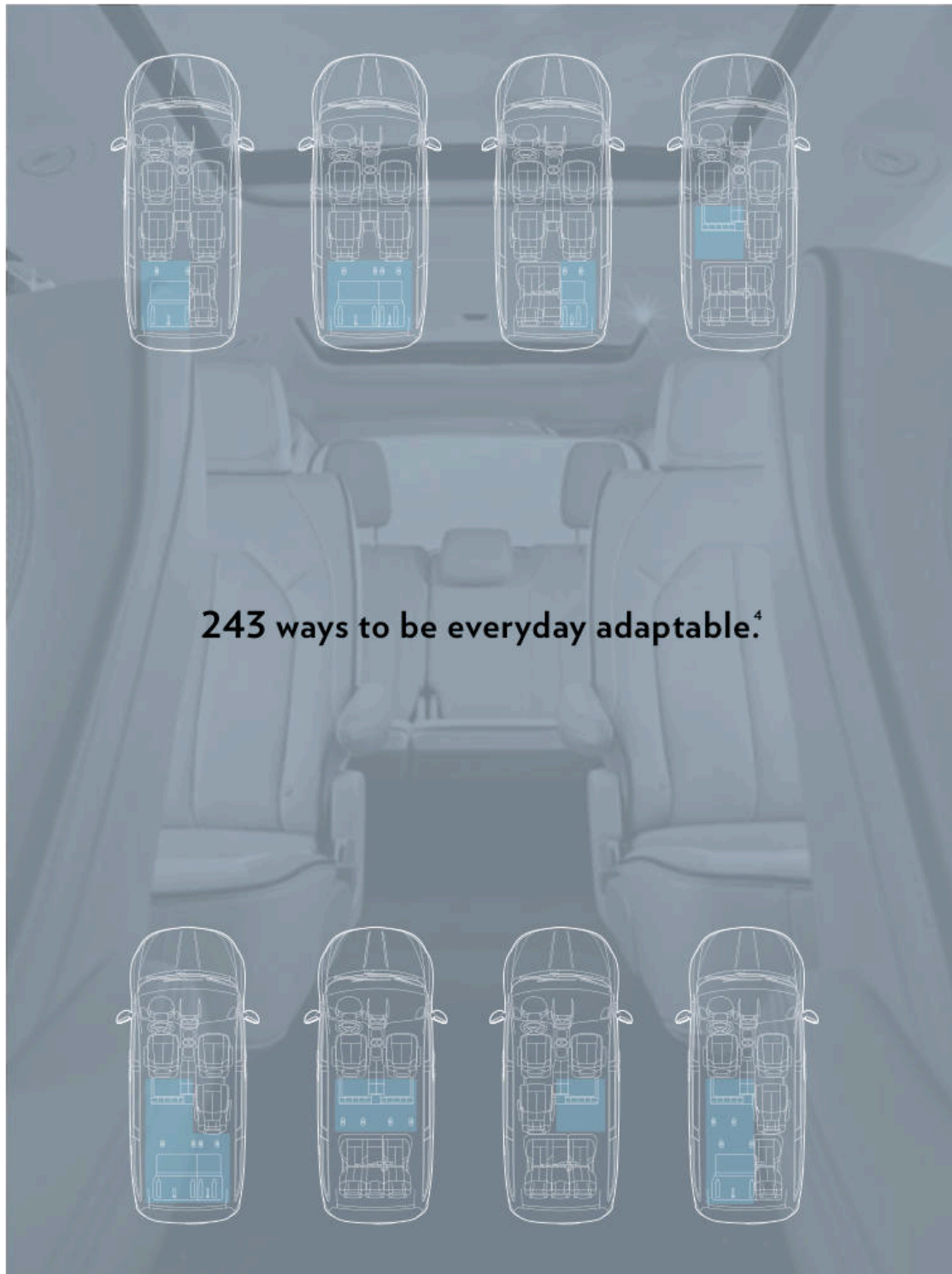


## **Carpool clubhouse.**

Stay organized while you run the show like a well-oiled machine. Clever storage, cup holders, iPad® drawer pockets and sliding drawers keep everything in its place while a phone, purse or wallet finds the perfect landing spot nearby. The ergonomic interior's premium, available leather-trimmed front seats are offered heated and ventilated, making Chrysler Pacifica built to back up the one in charge.

Open and airy inspire a surf's-up state of mind.

The spacious Chrysler Pacifica interior is visually expanded with the first-in-segment<sup>2</sup> available Tri-Pane Panoramic Sunroof — to set the mood for a timely chill-out.



**243 ways to be everyday adaptable.<sup>4</sup>**



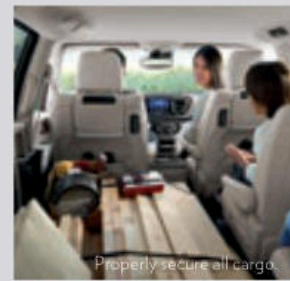
Gas model shown.

### **Pacifica has more cargo capacity than full-size SUVs.<sup>5</sup>**

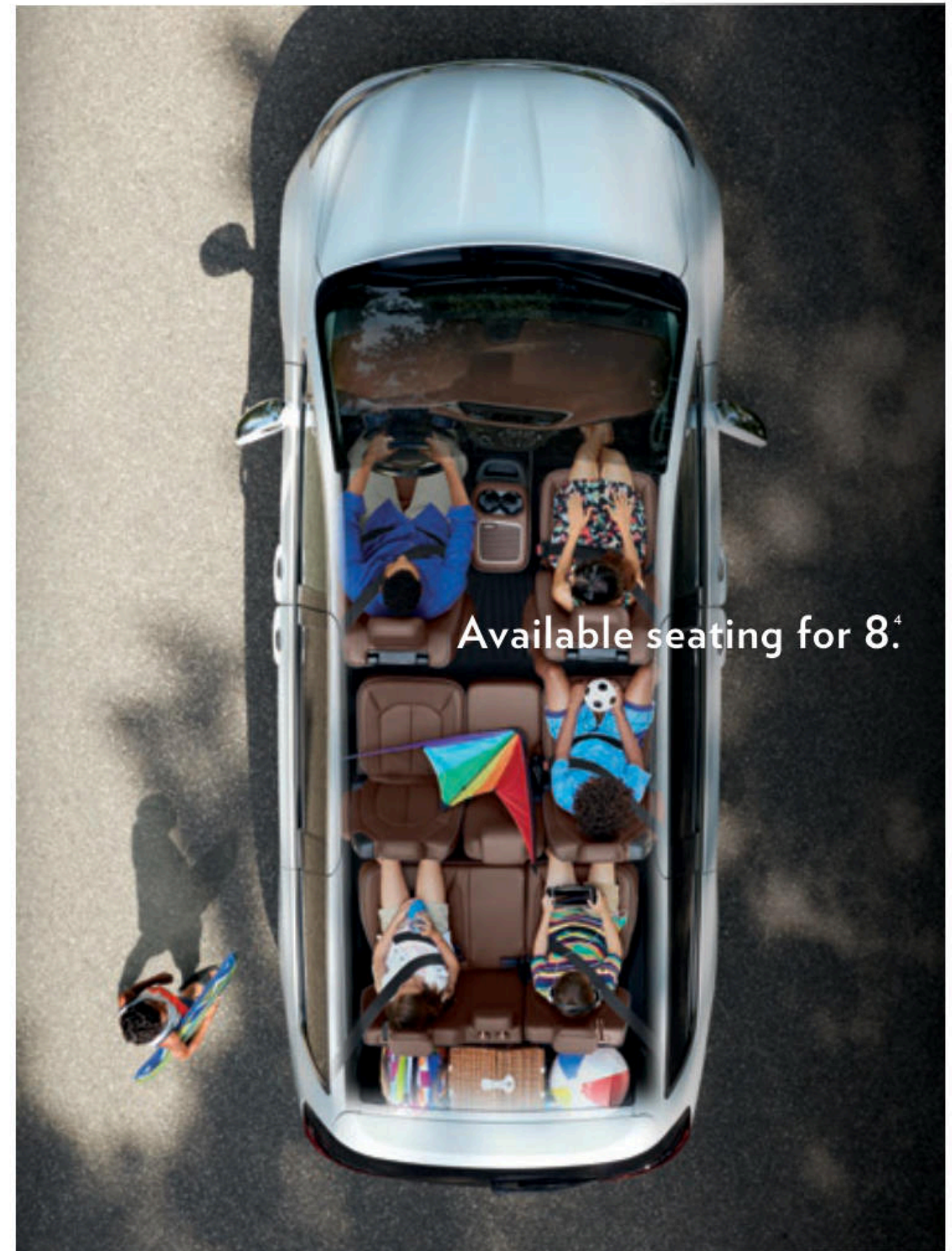
The Chrysler Pacifica is the only minivan in its class to offer Stow 'n Go<sup>®</sup> Seating and Storage.<sup>3</sup> No more struggling to remove seats. Simply fold your second<sup>6</sup>- or third-row seats into the floor to make plenty of space for all your fun and finds along the way.

## Room to go in bulk.

Up to 243 different seating and storage setups.<sup>4</sup>



- In-floor bins provide storage organization
- Available eight-passenger seating with 2nd-row center seat, adding an additional armrest, cup holder and bin while folded
- Up to five LATCH-installed child seats
- Available Stow 'n Go<sup>®</sup> Assist makes access to in-floor bins as easy as pressing a button
- The flat cargo space can hold a stack of 4'x 8' plywood boards after removing or stowing seats in the floor



Available 360° Surround-View Camera<sup>7</sup>  
Your “home away from home’s” eyes on the ground.

Provides a bird’s-eye view of the vehicle  
and its immediate surroundings

Uses four cameras positioned around the vehicle

Dynamic grid lines help to guide the driver

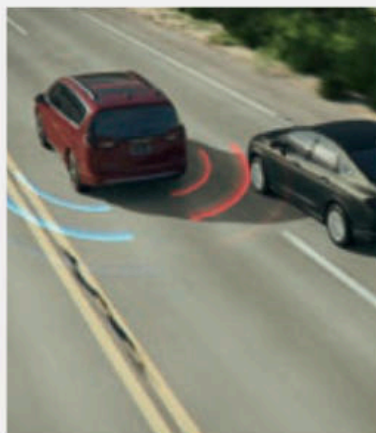
Select to view Front or Rear Park Assist<sup>8</sup>



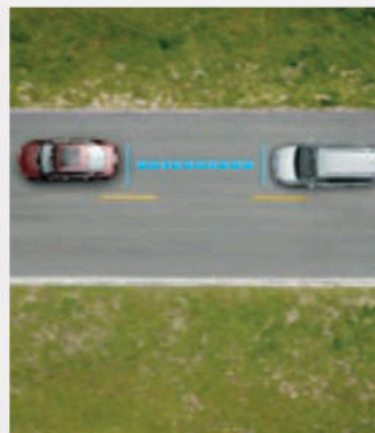
Limited shown in Granite Crystal Metallic.



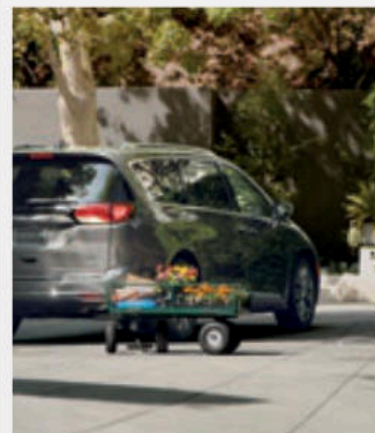
AVAILABLE FULL-SPEED FORWARD COLLISION WARNING WITH ACTIVE BRAKING<sup>7</sup>



AVAILABLE BLIND SPOT MONITORING<sup>10</sup>



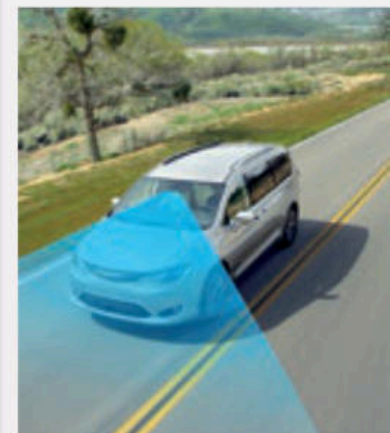
AVAILABLE ADAPTIVE CRUISE CONTROL WITH STOP AND GO<sup>11</sup>



AVAILABLE PARKSENSE<sup>®</sup> FRONT AND REAR PARK ASSIST<sup>8</sup> WITH STOP



AVAILABLE PARALLEL AND PERPENDICULAR PARK ASSIST<sup>8</sup>



AVAILABLE LANESENSE<sup>®</sup> LANE DEPARTURE WARNING WITH LANE KEEP ASSIST<sup>12</sup>

100+



Standard and available safety and security features.

**2019** IIHS TOP SAFETY PICK

When equipped with optional front crash prevention and specific headlights.



Available Uconnect® Theater: The most advanced entertainment system in its class!

Uconnect

### Your tech menu on demand.

Two 10.1-inch HD touchscreens

Nine built-in games and apps

Wireless headphones

Blu-ray™ DVD player

Dual HDMI inputs

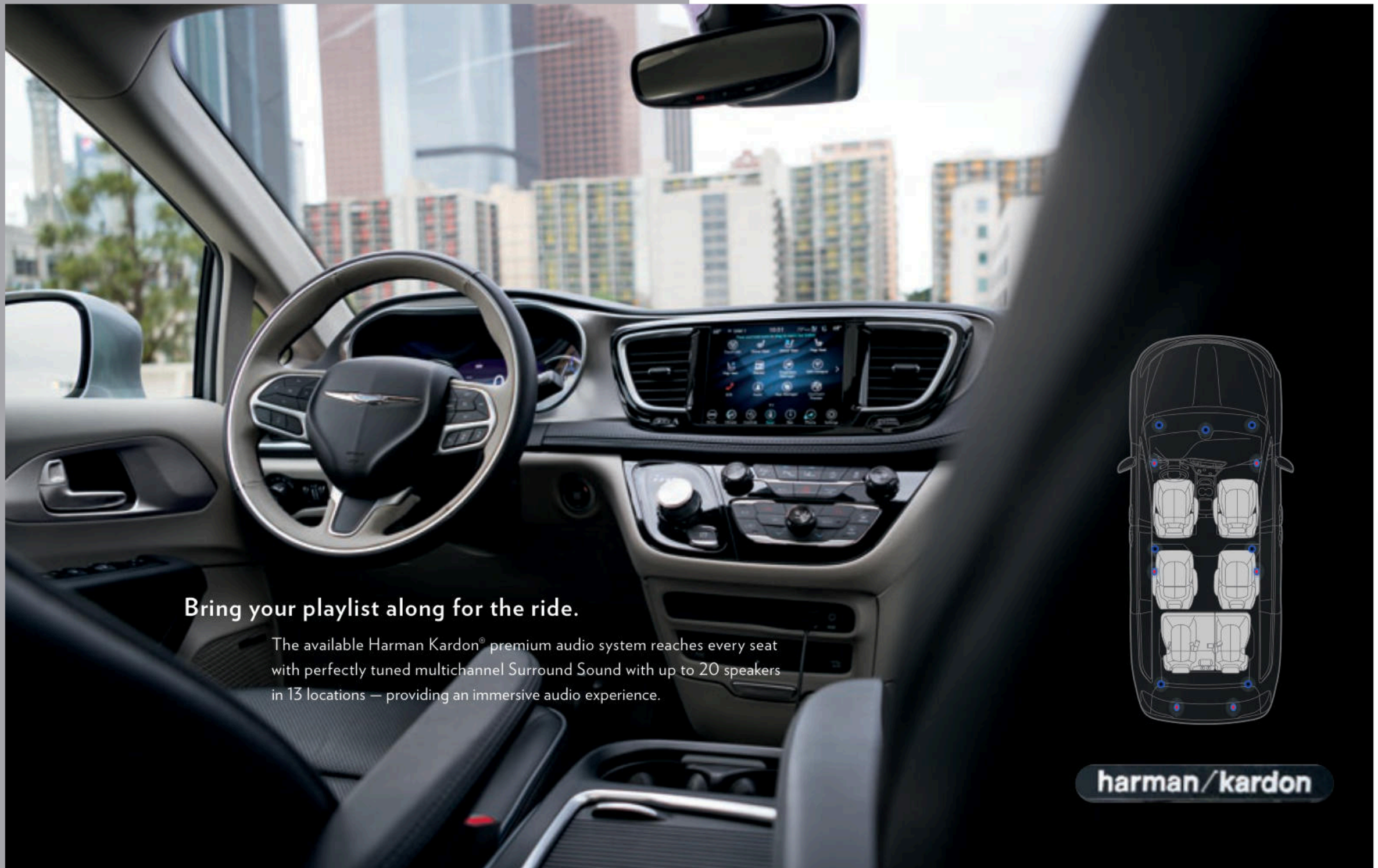
First-row USB<sup>13</sup> for first- and second-row movies

Charging ports available in all three rows

Android™ device wireless streaming<sup>14</sup>

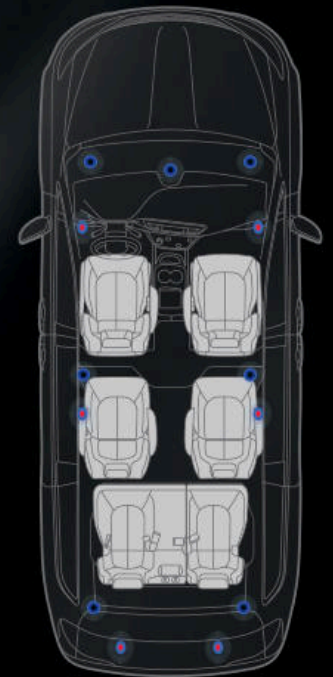
Bluetooth® touchpad remotes





**Bring your playlist along for the ride.**

The available Harman Kardon® premium audio system reaches every seat with perfectly tuned multichannel Surround Sound with up to 20 speakers in 13 locations — providing an immersive audio experience.



**harman/kardon**



Uconnect™

Brings a wide range of communication and entertainment services to your Pacifica and beyond.

**Uconnect® Built-in 4G Wi-Fi<sup>15</sup> Hotspot**

connects to your personal Wi-Fi<sup>15</sup> device through the AT&T® nationwide network for fast, reliable Internet for up to eight devices within 50 feet of your vehicle. Requires available Uconnect 4C NAV Radio.

**Uconnect Phone** pairs a Bluetooth® phone to send and receive hands-free<sup>16</sup> calls. Includes Do Not Disturb and Voice Recognition.

**Drag-and-Drop Menu Bar**

It personalizes the touchscreen dashboard.

**One-step Navigation**

Uconnect 4C NAV 8.4-inch touchscreen with enhanced navigation, maps and one-step voice destination. Available.

**SiriusXM® Radio<sup>17</sup>**

With the SiriusXM All Access<sup>17</sup> package, you get every channel available on your satellite radio, including commercial-free music, plus sports, news, talk and entertainment. You can also listen wherever you go on your portable devices with the SiriusXM App,<sup>17</sup> which is included with your one-year trial. Available.

**SiriusXM Travel Link<sup>17</sup>**

Access useful information when you need it, right at your fingertips. Get detailed weather maps, five-day forecasts and severe weather alerts, as well as sports scores and in-game weekly schedules for your favorite teams, information on fuel prices in your area and more. Your first five years of SiriusXM Travel Link<sup>17</sup> service are included. Requires available Uconnect 4C NAV Radio.

**SiriusXM Traffic Plus<sup>17</sup>**

Avoid congestion before you reach it. Get continuous updates on traffic speed, accidents, construction, road closures and more before you begin your travels. Your first five years of SiriusXM Traffic Plus<sup>17</sup> service are included. Requires available Uconnect 4C NAV Radio.

**SiriusXM Guardian™<sup>18</sup>**

Drive worry-free with this premium suite of convenience services that can be accessed in-vehicle or through the Uconnect App: SOS Call,<sup>19</sup> Roadside Assistance,<sup>20</sup> In-vehicle Assistance, Remote Start<sup>21</sup> and Lock/Unlock, Vehicle Finder<sup>22</sup> on map, Send & Go<sup>23</sup> navigation, Theft Alarm<sup>24</sup> alerts, Stolen Vehicle Assistance<sup>25</sup> and remote control via Amazon Alexa.<sup>26</sup> Includes a one-year trial. Requires available Uconnect 4C NAV Radio.

((SiriusXM))

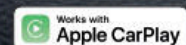
SiriusXM  
TRAVEL LINK

SiriusXM  
TRAFFIC PLUS

SiriusXM  
GUARDIAN

Uconnect

Your time. Your place.



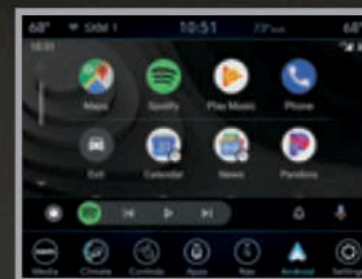
**Apple CarPlay**<sup>27</sup>

Integrates your iPhone<sup>®</sup> and Siri<sup>®28</sup> voice control with the Uconnect<sup>®</sup> touchscreen to make calls, access music, send/receive messages and get traffic directions while staying focused on the road.

**android  
auto**

**Android Auto**<sup>TM29</sup>

Connects your Android<sup>™</sup> phone to the Uconnect touchscreen system to safely access Google Maps and Google Play Music, place calls, send/receive messages and stay focused and connected with Google Assistant.



Uconnect™ New remote vehicle control with Amazon Alexa.



Use the available SiriusXM Guardian™<sup>18</sup> services to command your Pacifica using your voice with the Chrysler skill<sup>26</sup> for Amazon Alexa on an Alexa-enabled device from the comfort of your home!

- Activate or cancel Remote Start<sup>21</sup>
- Remote door lock/unlock
- Activate the horns and lights remotely
- Check tire pressure, fuel level or oil life
- Send destinations to your vehicle's navigation system<sup>23</sup>



*"Alexa, start my car."*

*"Alexa, send directions to my Pacifica."*



## CHRYSLER PACIFICA HYBRID:

America's first and only Hybrid minivan.



Drive farther than gas-only Pacifica models while reducing emissions with 82 MPGe.<sup>31</sup>



**520-mile total combined driving range<sup>32</sup> with 32 electric miles<sup>30</sup> means no range anxiety.**

The Chrysler Pacifica Hybrid has an astounding fuel economy of 82 MPGe,<sup>31</sup> combining electric battery charge, regenerative braking, and a V6 gasoline engine with 16.5-gallon fuel tank. The ability to travel 32 miles<sup>30</sup> in all-electric mode allows a total combined driving range of 520 miles.<sup>32</sup> The hybrid system seamlessly switches between gas and electric power based on driving conditions.

**e 32 MILES<sup>30</sup>**  
ALL-ELECTRIC RANGE





LIMITED WARRANTY ON BATTERY<sup>33</sup>



Up to \$7,500 federal tax credit.<sup>34</sup>  
Eligible for state HOV lane sticker.<sup>34</sup>



### Creating the possible.

The Hybrid model qualifies for a healthy tax incentive,<sup>34</sup> and the 16kWh battery includes a 10-Year/150,000-Mile Limited Warranty.<sup>33</sup>



The best of both worlds.

AVAILABLE 240V CHARGER  
TO QUICKLY CHARGE.  
**IN AS LITTLE AS**  
**2 HRS**<sup>35</sup>

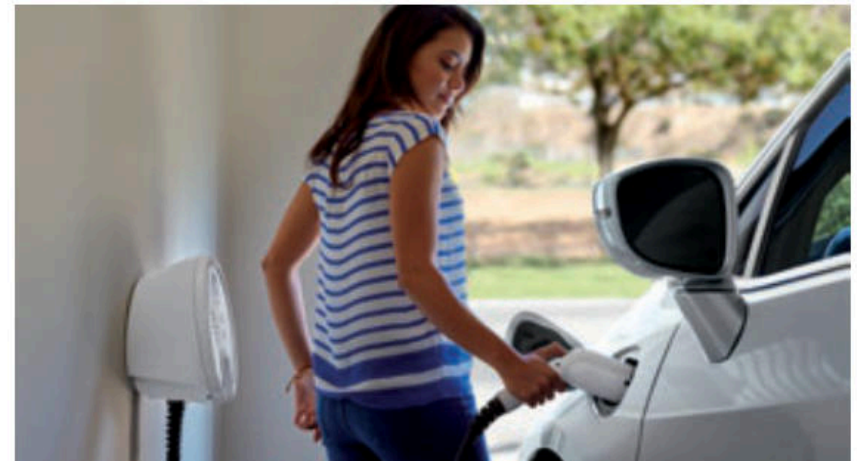
Hybrid Limited shown in Billet Silver Metallic.



The five-point charge indicator is always in view, even from a distance.



Charges in as little as two hours with a Mopar® Level 2-installed Charger.<sup>35</sup>





In-home charging solutions available through Amazon

It's simple. Just visit [amazon.com/pacificahybrid](https://amazon.com/pacificahybrid) to schedule a professional home installation with a licensed electrician for the convenience and reliability you expect.

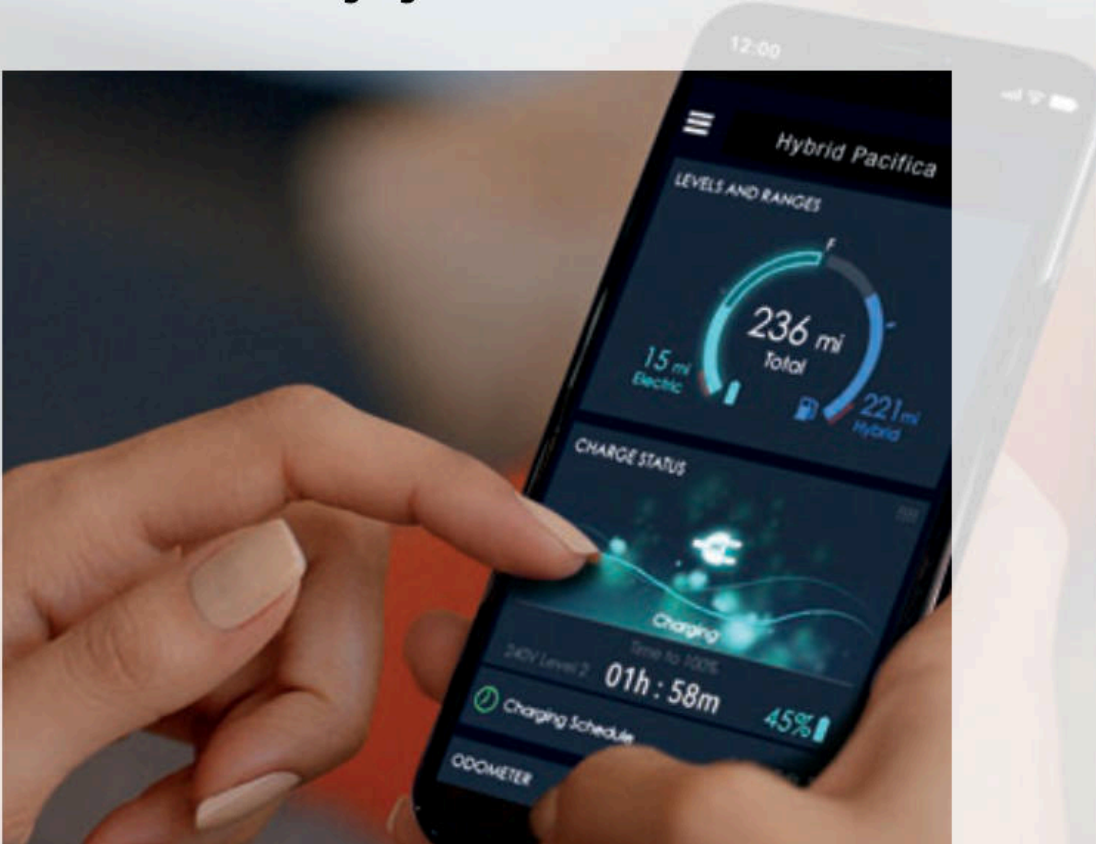
Get a licensed and qualified pro with a strong track record of service quality and upfront prices with free estimates. Once the installation service is complete, Amazon will charge the card you have on file. And with Amazon's Happiness Guarantee, they will make it right if you're not satisfied with your installation service, giving you peace of mind.

## Charge at home faster with Amazon.

The Chrysler Brand has teamed up with Amazon to make installing a faster charger more convenient.



Mobile app<sup>36</sup> with charge status and charging station locator.



The Hybrid model's standard Uconnect® 8.4-inch touchscreen system with available navigation and Voice Command includes Hybrid Electric Pages, providing vehicle information screens for Power Flow, Driving History and Schedule Charging.



The ins and outs of efficient living.



Transforming to a more eco-conscious lifestyle is easy without having to sacrifice the much-needed space for your family. The Chrysler Pacifica Hybrid includes seating for seven, third-row Stow 'n Go® seating and storage with fold-in-floor seats, easily removable second-row seats, roomy compartments, and convenient accessories like shopping bag hooks to help keep all your items properly secured.



## Bypass basic on a daily basis.

The S Appearance Package and Red S Edition<sup>37</sup> (based on Limited) offer an extra dose of attitude for Chrysler Pacifica gas and Hybrid models.



### S Appearance Package

- Unique 18- or 20-inch Black Noise wheels
- Black Chrysler grille wing badge and S badge
- Black grille surround
- Leather-wrapped steering wheel
- All-Black interior with unique stitching on seats
- Black Stow n Place<sup>®</sup> roof rack (available)

### Red S Edition<sup>37</sup>

- 18- or 20-inch Black Noise wheels
- Black Chrysler grille wing badge with Red accents and Red S rear badging
- Rodéo Red Nappa leather-trimmed seats
- Piano Black interior accents
- Advanced SafetyTec<sup>™</sup> and KeySense
- 20-Speaker Harman Kardon<sup>®</sup> Sound Group



# 28

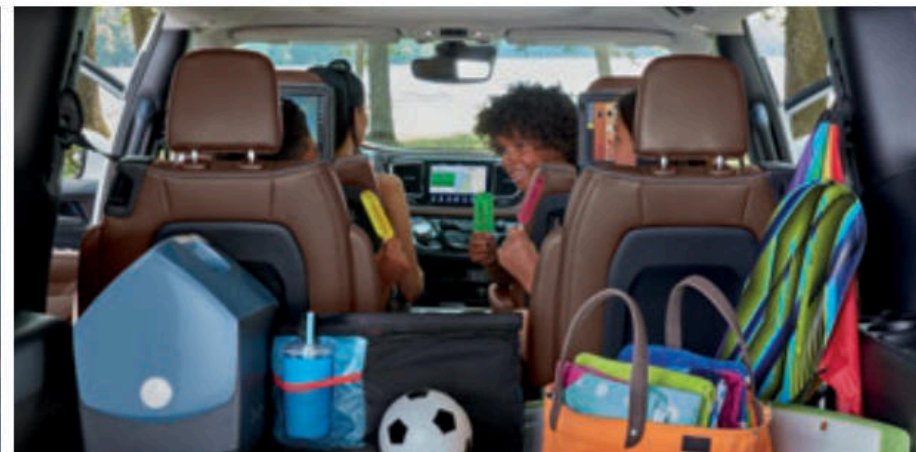
19 city/28 highway mpg<sup>38</sup>  
Standard 3.6L V6 engine

## Unsurpassed highway fuel economy in its class.<sup>39</sup>

The Chrysler Pacifica gas model includes a powerful yet efficient 3.6L Pentastar® V6 engine along with the 9-speed automatic transmission — a prime factor of the driving dynamics and unsurpassed highway fuel economy in its class. The sculpted design offers advanced aerodynamics, contributing to its fuel efficiency.

## Tuned for never-ending takeaways.

Whether it's loading up the trailer with home improvement supplies or garage sale furniture, or pulling the family camper or boat, you'll easily get it done with a class-leading towing capacity<sup>40</sup> of up to 3,600 lb when properly equipped. When you're pulling that much weight, it's nice to know the available Trailer Sway Control (TSC)<sup>41</sup> will help keep you safely on course.



Pacifica is designed to deliver the ride, feel and comfort of a premium vehicle, with precision-tuned handling for more aggressive driving characteristics and precise, responsive steering.

## Chrysler Voyager: The quintessential family vehicle raises the bar on value.



The Chrysler Voyager model provides a new level of value for the iconic minivan lineup. Designed for budget-conscious family and fleet customers, the Voyager delivers standard features and utilities including seven-passenger seating and Apple CarPlay<sup>®27</sup> and Android Auto<sup>™29</sup> smartphone compatibility. Voyager, as well as Pacifica, offers mobility innovations to its well-equipped versatility to ensure superior maneuverability and improved ease of entry and exit with conversions for wheelchair users.



### 1. PACIFICA TOURING

Select standard equipment for Touring

#### Powertrain

3.6L Pentastar® Variable Valve Timing (VVT) V6 with Engine Stop/Start (ESS) and 9-speed Automatic Transmission  
19-gallon Fuel Tank

#### Standard Features

2nd-row Stow 'n Go® Bucket Seats  
2nd-row Window Shades  
3rd Row with Stow 'n Go 60/40 Split Bench  
6 Speakers  
7-passenger Seating  
Additional Charge-only 1st-row USB Port<sup>13</sup>  
Android Auto™<sup>29</sup>  
Apple CarPlay®<sup>27</sup>  
Auto-dimming Rearview Mirror  
Bright Door Handles  
Capless Fuel Fill  
Cruise Control  
In-floor Storage Bins  
Interior Door Handle LED Lamps  
LED Taillamps  
ParkView® Rear Back-Up Camera<sup>7</sup>  
Power Liftgate  
Power Locks  
Power-sliding Doors  
Premium Fog Lamps  
Push-button Start  
Quad-Halogen Projector Headlamps  
Rear Reading/Courtesy Lamps  
Remote Proximity Entry on All Doors  
Remote Start System<sup>42</sup>  
SafetyTec™  
– Blind Spot Monitoring<sup>10</sup> with Rear Cross-Path Detection System<sup>7</sup>  
– ParkSense® Rear Park Assist with Stop<sup>8</sup>  
Security Alarm<sup>43</sup>  
Stow 'n Assist (for driver's side)  
Three-Zone Automatic Climate Control  
Tilt/Telescoping Steering Wheel  
Uconnect® 4 with 7-inch Display  
Universal Garage Door Opener

### 2. PACIFICA TOURING L

Select standard equipment over Touring

#### Standard Features

2nd- and 3rd-row Window Shades  
Bright Bodyside Moldings  
Driver's Seat Memory  
Grocery Bag Hooks on 1st- and 3rd-row Seatbacks  
Heated Front Seats  
Leather-wrapped Heated Steering Wheel  
McKinley Leather-trimmed Perforated Seating  
Stow n Place® Bright Side Roof Rails with Integrated Crossbars

### 3. PACIFICA TOURING L PLUS

Select standard equipment over Touring L

#### Powertrain

3.6L Pentastar VVT V6 with ESS and 9-speed Automatic Transmission

#### Standard Features

2nd- and 3rd-row USB Charge Port  
4G Wi-Fi<sup>15</sup> Hotspot Trial  
7-inch Driver Information Display (DID)  
13 Alpine® Speakers  
Acoustic Windshield  
Heated 2nd-row Seats  
SiriusXM® Traffic Plus<sup>17</sup> and SiriusXM Travel Link<sup>17</sup> with 5-Year Service Trial  
SiriusXM Guardian™<sup>18</sup> Trial  
Super Console  
Uconnect 4C NAV with 8.4-inch Display  
Uconnect Theater with Wireless Streaming (only standard on Touring L Plus)

### 4. PACIFICA LIMITED

Select standard equipment over Touring L Plus

#### Standard Features

Auto-dimming Exterior Driver's-side Mirror  
Chrome Power-folding Exterior Mirrors  
Footwell Courtesy Lamp  
Hands-free Sliding Doors and Liftgate  
High Intensity Discharge (HID) Headlamps  
LED Fog Lamps  
LED Signature Daytime Running Lamps (DRLs)  
Nappa Leather-trimmed Seats  
Power-folding 3rd-row Seat  
Premium Two-tone Leather-wrapped Steering Wheel  
Soft Instrument Panel with Accent Stitching  
Stow 'n Vac®  
Tri-Pane Panoramic Sunroof  
Ventilated Front Seats

### 5. PACIFICA RED S EDITION<sup>17</sup>

Select standard equipment over Limited

#### Standard Features

20-inch Cast Aluminum Wheel with Black Noise Finish  
20-Speaker Harman Kardon® Sound Group  
Advanced SafetyTec Group  
– Auto High-Beam Headlamp Control  
– Adaptive Cruise Control with Stop and Go<sup>11</sup>  
– Full-Speed Forward Collision Warning Plus (FSFCW+)<sup>9</sup>  
– LaneSense® Lane Departure Warning Plus (LDW+)<sup>12</sup>  
– Parallel and Perpendicular Park Assist® with Stop  
– ParkSense® Front/Rear Park Assist with Stop<sup>8</sup>  
– Rain-sensing Windshield Wipers  
– Surround-View Camera<sup>7</sup>  
Black Chrysler Grille Wing Badge with Red Accent  
Black Daylight Opening (DLO) Moldings  
Black Stow n Place Side Roof Rails with Integrated Crossbars  
Body-color Door Handles  
Body-color Power Exterior Mirrors  
Brush Metal Hydro Bezels  
KeySense  
Piano Black Interior Accents  
Red S Rear Badging  
Rodéo Red Nappa Leather-trimmed Seats



6



7



8



9

#### 6. PACIFICA HYBRID TOURING

Select standard equipment for Hybrid Touring

##### Powertrain

- 3.6L Atkinson Cycle V6 Hybrid Engine with Electrically Variable Transmission (EVT)
- 16kWh Battery
- 16.5-gallon Fuel Tank

##### Standard Features

- 2nd-row Window Shades
- 6 Speakers
- 7-inch Driver Information Display (DID) with Unique Hybrid Screens
- 7-passenger Seating
- 60/40 3rd Row with Stow 'n Go®
- Acoustic Windshield
- Android Auto™<sup>29</sup>
- Apple CarPlay®<sup>27</sup>
- Auto-dimming Rearview Mirror
- Battery Charge Indicator
- Capless Fuel Fill
- Cruise Control
- Easy-Entry Slide 2nd-row Seating
- Hybrid Plug-in Charging Port with 120-volt Cord
- ParkView® Rear Back-Up Camera<sup>7</sup>
- Power Locks
- Power-sliding Doors
- Push-button Start
- Remote Proximity Entry on All Doors
- SafetyTec™
  - Blind Spot Monitoring<sup>10</sup> with Rear Cross-Path Detection System<sup>7</sup>
  - ParkSense® Rear Park Assist with Stop<sup>8</sup>
- Sunscreen Glass
- Three-zone Automatic Climate Control
- Tilt/Telescoping Steering Wheel
- Uconnect® 4 with 8.4-inch Display
- Universal Garage Door Opener

#### 7. PACIFICA HYBRID TOURING L

Select standard equipment over Hybrid Touring

##### Standard Features

- 2nd- and 3rd-row Window Shades
- Blind Spot Monitoring<sup>10</sup> with Rear Cross-Path Detection System<sup>7</sup>
- Bright Bodyside Moldings
- Grocery Bag Hooks on 1st- and 3rd-row Seatbacks
- Heated Front Seats
- Leather-wrapped Heated Steering Wheel
- McKinley Leather-trimmed Perforated Seating
- Power Liftgate
- Remote Start System<sup>42</sup>
- Stow n Place® Bright Side Roof Rails with Integrated Crossbars

#### 8. PACIFICA HYBRID LIMITED

Select standard equipment over Hybrid Touring L

##### Standard Features

- 2nd-row USB Charge Ports
- 13 Alpine® Speakers
- Auto Advance 'n Return on Driver and Passenger Sides
- Chrome Power-folding Exterior Mirrors with Memory
- Driver's Seat Memory
- Hands-free Sliding Doors and Liftgate
- Nappa Leather-trimmed Seats
- Power Adjustable Passenger Seat
- Premium Two-tone Leather-wrapped Steering Wheel
- Super Console
- Uconnect 4C NAV with 8.4-inch Display
- Ventilated Front Seats

#### 9. PACIFICA HYBRID RED S EDITION<sup>37</sup>

Select standard equipment over Hybrid Limited

##### Standard Features

- 18-inch Cast Aluminum Wheel with Black Noise Finish
- 20-Speaker Harman Kardon® Sound Group
- Advanced SafetyTec Group
- Black Chrysler Grille Wing Badge with Red Accent
- Black Daylight Opening (DLO) Moldings
- Black Stow n Place Side Roof Rails with Integrated Crossbars
- Body-color Door Handles
- Body-color Power Exterior Mirrors
- KeySense
- Piano Black Interior Accents
- Red S Rear Badging
- Rodéo Red Nappa Leather-trimmed Seats



10

10. CHRYSLER VOYAGER L

Select standard equipment for Voyager L

*Powertrain*

3.6L Pentastar® Variable Valve Timing (VVT) V6  
with Engine Stop/Start (ESS) and 9-speed  
Automatic Transmission  
19-gallon Fuel Tank

*Standard Features*

1st-row USB Charge Ports  
2nd-row Deluxe Bench Seat  
3rd Row with Stow 'n Go® 60/40 Split Bench  
6 Speakers  
7-passenger Seating  
Active Noise Cancellation (ANC)  
Air Conditioning — Driver and Front-Passenger  
Manual Temperature Control  
Android Auto™<sup>29</sup>  
Apple CarPlay®<sup>27</sup>  
Capless Fuel Fill  
Cruise Control  
Defrost — Rear window  
Headlamps — Halogen  
Integrated Voice Command — Hands-free<sup>16</sup>  
communication system  
ParkView® Rear Back-Up Camera<sup>7</sup>  
Power Locks  
Power Outlets — Auxiliary, 12-volt in instrument panel  
Premium Cloth Seating  
Push-button Start  
Remote Keyless Entry  
Remote Proximity Entry — Driver's Side  
Sunscreen Glass  
Switchable Map/Dome Reading Lamps  
Tilt/Telescoping Steering Wheel  
Uconnect® 4 with 7-inch Display



11

11. CHRYSLER VOYAGER LX

Select standard equipment over Voyager L

*Standard Features*

Air Conditioning — Three-zone Manual  
Temperature Control  
Body-color Door Handles  
Cargo Compartment Lamp  
Driver's Power Adjustable Seat  
Easy Clean Floor Mats  
Easy Slide 2nd-row Captain's Chairs  
Front and Rear LED Interior Lamps  
Front Courtesy Lamp  
Headlamps — Automatic Halogen  
In-floor Storage Tubs  
Overhead Ambient Surround Interior Lighting  
SiriusXM® Radio<sup>17</sup> (1-year trial subscription)  
Steering-wheel Mounted Audio Controls

Chrysler Pacifica Wheels



17-INCH CAST ALUMINUM  
WHEEL, FULLY PAINTED  
TECH SILVER  
Standard on Touring and Touring L  
(WFN)



17-INCH CAST ALUMINUM  
POLISHED-FACE WHEEL WITH  
TECH GREY-PAINTED POCKETS  
Standard on Touring L Plus  
and Hybrid Limited  
Optional on Hybrid Touring and Hybrid Touring L  
(WGP)



18-INCH CAST ALUMINUM  
WHEEL, FULLY PAINTED  
FINE SILVER  
Standard on Limited  
Optional on Touring,  
Touring L and Touring L Plus  
(WPW)



17-INCH CAST ALUMINUM  
WHEEL, POLISHED  
Standard on Hybrid Touring  
and Hybrid Touring L  
(WAE)



18-INCH CAST ALUMINUM  
POLISHED-FACE WHEEL WITH  
TECH GREY-PAINTED POCKETS  
Optional on Hybrid Limited  
(WPU)



18-INCH CAST ALUMINUM  
WHEEL WITH BLACK NOISE FINISH  
Standard on Hybrid Red S Edition<sup>11</sup>  
Included with S Appearance Package  
on Hybrid Touring, Hybrid Touring L  
and Hybrid Limited  
(WAK)



20-INCH CAST ALUMINUM  
POLISHED-FACE WHEEL WITH  
TECH GREY-PAINTED POCKETS  
Optional on Limited  
(WPA)



18-INCH CAST ALUMINUM  
WHEEL WITH BLACK NOISE FINISH  
Included with S Appearance Package  
on Touring, Touring L,  
Touring L Plus and Limited  
(WHG)



20-INCH CAST ALUMINUM  
WHEEL WITH BLACK NOISE FINISH  
Standard on Red S Edition<sup>11</sup>  
Optional with S Appearance Package on Touring,  
Touring L, Touring L Plus and Limited  
(WRE)

Chrysler Voyager Wheels



17-INCH CAST ALUMINUM  
WHEEL WITH DIAMOND-CUT  
FINISH AND TECH  
GREY-PAINTED POCKETS  
Standard on Touring L Plus  
and Hybrid Limited  
Optional on Hybrid Touring  
and Touring L  
(WEF)<sup>17</sup>



17-INCH STEEL WHEEL  
WITH FULL COVER  
Standard on Voyager L  
(W7C / WFU)



17-INCH CAST ALUMINUM  
WHEEL, FULLY PAINTED  
TECH SILVER  
Standard on Voyager LX  
(WFN)

## Chrysler Pacifica Exterior Colors



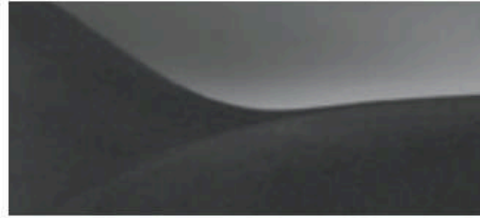
Billet Silver Metallic\* Clear-Coat



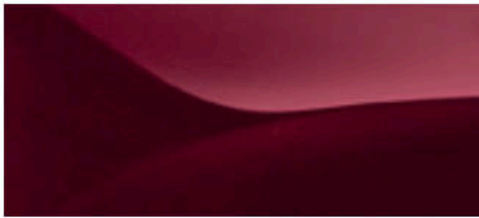
Ocean Blue Metallic\* Clear-Coat



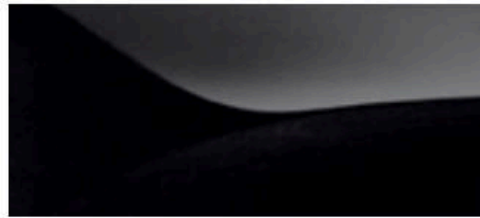
Bright White Clear-Coat\*



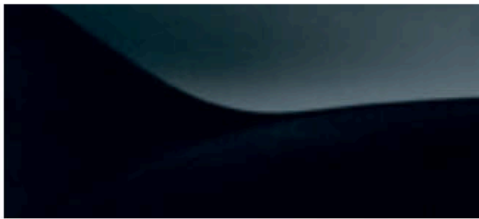
Ceramic Gray Clear-Coat\*\*157



Velvet Red Pearl Coat



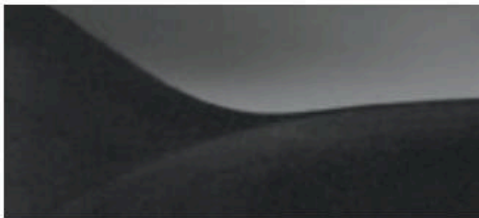
Brilliant Black Crystal Pearl Coat\*



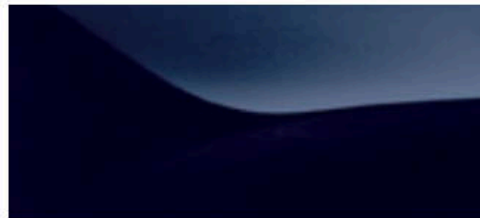
Maximum Steel\*\*157 Clear-Coat



Luxury White Pearl Coat\*



Granite Crystal Metallic\* Clear-Coat



Jazz Blue Pearl Coat

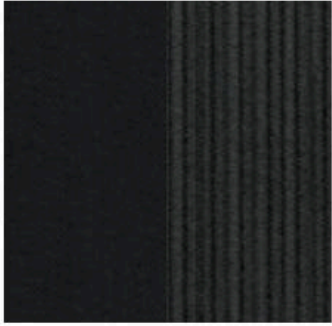


Velvet Red Pearl Coat

\*Available on Red S Edition.

\*\*Not Available on Voyager.

## Chrysler Pacifica Interior Colors



**BLACK CLOTH/RAVINE INSERT AND SEPIA STITCHING** –  
Standard on Pacifica Touring



**TOFFEE CLOTH/RAVINE INSERT AND TOFFEE STITCHING** –  
Standard on Pacifica Touring



**ALLOY CLOTH/RAINFOREST INSERT AND ICE BLUE STITCHING** –  
Optional on Hybrid Touring



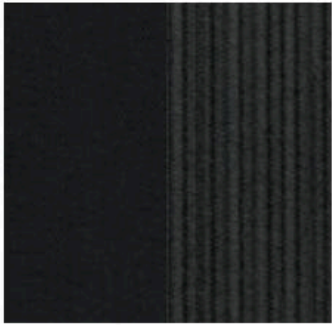
**DEEP MOCHA NAPPA LEATHER TRIM WITH AXIS II PERFORATED INSERT AND DIESEL GREY STITCHING** –  
Standard on Limited and Hybrid Limited



**ALLOY NAPPA LEATHER TRIM WITH AXIS II PERFORATED INSERT AND CRANBERRY WINE STITCHING (ICE BLUE STITCHING ON HYBRID)** –  
Standard on Limited and Hybrid Limited



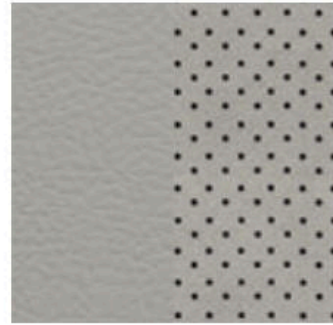
**BLACK NAPPA LEATHER TRIM WITH AXIS II PERFORATED INSERT AND LIGHT DIESEL GREY STITCHING/ EMBROIDERED S LOGO** –  
Included with S Appearance Package on Limited and Hybrid Limited



**BLACK CLOTH/RAVINE INSERT WITH LIGHT DIESEL GREY STITCHING/ EMBROIDERED S LOGO** –  
Included with S Appearance Package on Touring and Hybrid Touring



**BLACK MCKINLEY LEATHER TRIM WITH AXIS PERFORATED INSERT AND SEPIA STITCHING** –  
Standard on Touring L, Touring L Plus and Hybrid Touring L

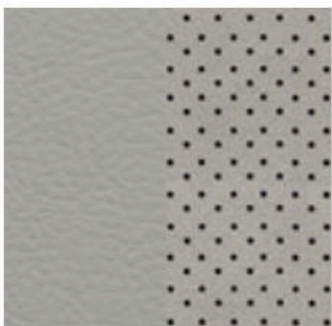


**ALLOY MCKINLEY LEATHER TRIM WITH AXIS PERFORATED INSERT AND TOFFEE STITCHING** –  
Standard on Touring L and Touring L Plus



**TWO-TONE RODÉO RED/BLACK NAPPA LEATHER TRIM WITH AXIS II PERFORATED INSERT AND LIGHT DIESEL GREY STITCHING/ EMBROIDERED S LOGO** –  
Standard on Red S Edition<sup>57</sup> and Hybrid Red S Edition<sup>57</sup>

## Chrysler Voyager Interior Colors



**ALLOY MCKINLEY LEATHER TRIM WITH AXIS PERFORATED INSERT AND ALLOY STITCHING (ICE BLUE STITCHING ON HYBRID)** –  
Standard on Hybrid Touring L  
Optional on Touring L and Touring L Plus



**BLACK MCKINLEY LEATHER TRIM WITH AXIS PERFORATED INSERT AND LIGHT DIESEL GREY STITCHING/ EMBROIDERED S LOGO** –  
Included with S Appearance Package on Touring L, Touring L Plus and Hybrid Touring L



**BLACK NAPPA LEATHER TRIM WITH AXIS II PERFORATED INSERT AND DIESEL GREY STITCHING** –  
Standard on Limited and Hybrid Limited



**BLACK CLOTH/RAVINE INSERT AND ALLOY STITCHING** –  
Standard on Voyager L and Voyager LX



**TOFFEE CLOTH/RAVINE INSERT AND TOFFEE STITCHING** –  
Standard on Voyager L and Voyager LX



## Chrysler Pacifica Specifications (continued)

	PACIFICA TOURING	PACIFICA TOURING L	PACIFICA TOURING L PLUS	PACIFICA LIMITED	PACIFICA RED5	PACIFICA HYBRID TOURING	PACIFICA HYBRID TOURING L	PACIFICA HYBRID LIMITED	PACIFICA HYBRID RED5
<b>INTERIOR FEATURES (continued)</b>									
Power Outlets — Auxiliary, 12-volt in instrument panel	*	*	*	*	*	*	*	*	*
— Auxiliary, 115-volt (included with Uconnect® Theater with Streaming Package)	P	*	P	P			P	P	
Remote Start System <sup>42</sup> (packaged with Cold Weather Group)	*	*	*	*	*	P	*	*	*
Shades — 2nd- and 3rd-row retractable		*	*	*	*		*	*	*
— 2nd-row	*	*	*	*	*		*	*	*
Speed Control (not available with Adaptive Cruise Control (ACC) <sup>11</sup> )	*	*	*	*	*	*	*	*	*
— ACC with Stop and Go <sup>11</sup> (included with Advanced SafetyTec™ Group)	P	P	P	P	*			P	*
Steering Column — Tilt/telescoping	*	*	*	*	*	*	*	*	*
Steering Wheel — Heated (included with Cold Weather Group)	P	*	*	*	*	P	*	*	*
— Luxury				*	*				
— Mounted audio controls	*	*	*	*	*	*	*	*	*
— Urethane	*	*	*	*	*	*	*	*	*
— Leather-wrapped (included with S Appearance Package and Cold Weather Group)	P	*	*	*	*	P	*	*	*
Storage — Floor tray	*	*	*	*	*	*	*	*	*
— Floor console						*			
— Full-length upgraded floor console	*	*	*	*	*	*	*	*	*
— Super Console (includes illuminated cup holders)			*	*	*			*	*
— Glove box, locking	*	*	*	*	*	*	*	*	*
— Lower instrument-panel cubby bin (not available with Blu-ray™/DVD player/USB port)	*	*	*	*	*	*	*	*	*
Stow 'n Vac® Integrated Vacuum Cleaner				*	*				
— Vacuum Delete (includes inflatable spare tire kit with sealant)			O	O					
Trip Computer — Electronic Vehicle Information Center (EVIC) with display in instrument cluster, controls mounted on steering wheel	*	*	*	*	*	*	*	*	*
Universal Garage Door Opener — Programmable, 3-function	*	*	*	*	*	*	*	*	*
Windows — Front, power 1-touch up/down	*	*	*	*	*	*	*	*	*
— Power front and rear 1-touch up/down			*	*	*	*	*	*	*
— Power 2nd-row	*	*	*	*	*	*	*	*	*
<b>SEATING AND TRIM</b>									
Seats — Driver's 4-way power lumbar support (included with power driver's seat)	*	*	*	*	*	*	*	*	*
— 8-way power driver's seat (with memory on Touring L, Touring L Plus and Limited)	*	*	*	*	*	*	*	*	*
— 8-way power front-passenger seat (included with Uconnect Theater with Streaming Package and Premium Audio Group; includes Auto Advance 'n Return on passenger side and includes USB charge-only 2nd-row port)	P	P	*	*	*	O/P	*	*	*
— Heated 2nd-row			*	*	*				
— Heated front (included with Cold Weather Group)	P	*	*	*	*	P	*	*	*
— Cloth low-back bucket	*	*	*	*	*	*	*	*	*
— Perforated leather-trimmed		*	*	*	*			*	*
— Premium leather-trimmed			*	*	*			*	*
— Perforated leather-trimmed with S logo (included with S Appearance Package)		P	P			P			
— Cloth with S logo (included with S Appearance Package)	P					P			
— Nappa leather-trimmed (included with S Appearance Package)				P	*			P	*
— 2nd-row Stow 'n Go® bucket seats that fold in the floor and include 2nd-row in-floor storage bins	*	*	*	*	*				
— Easy-entry slide 2nd-row						*	*	*	*
— Auto Advance 'n Return driver's-side	*	*	*	*	*	*	*	*	*
— Auto Advance 'n Return passenger-side (packaged with 8-way power front-passenger seat)	P	P	*	*	*			*	*

\* = Included. P = Available within Package noted. O = Optional.

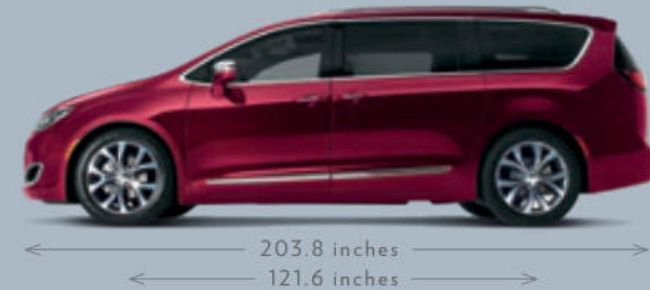
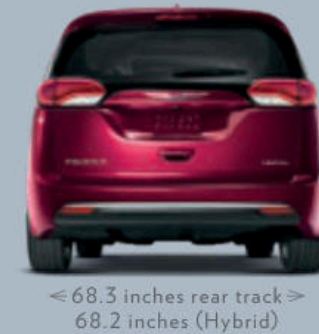
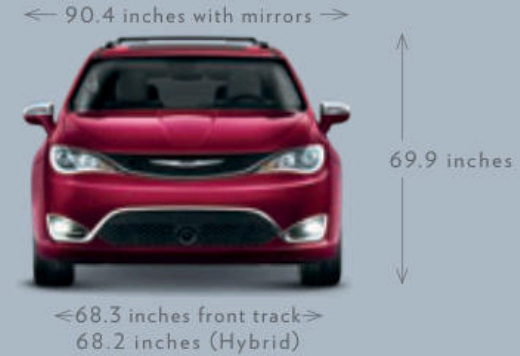
	PACIFICA TOURING	PACIFICA TOURING L	PACIFICA TOURING L PLUS	PACIFICA LIMITED	PACIFICA RED5	PACIFICA HYBRID TOURING	PACIFICA HYBRID TOURING L	PACIFICA HYBRID LIMITED	PACIFICA HYBRID RED5
<b>SEATING AND TRIM (continued)</b>									
— 3rd-row power-folding Stow 'n Go 60/40 bench seat that folds in the floor			*	*	*				
— 3rd-row Stow 'n Go 60/40 bench seat that folds in the floor	*	*	*	*	*	*	*	*	*
— 8-passenger seating	O	O	O	O	O				
— Ventilated front seats			*	*	*			*	*
<b>UCONNECT</b>									
SiriusXM® Radio <sup>17</sup> (1-year trial subscription)	*	*	*	*	*	*	*	*	*
Sound Systems — Harman Kardon® 20-speaker (included with 20-Speaker Harman Kardon Sound Group)			O	O	*			O	*
— Alpine® 13 speakers (included with Premium Audio Group)		P	*	*	*			P	*
— 6 speakers (includes Active Noise Cancellation)	*	*				*	*	*	*
Uconnect 4 with 7-inch Display — Includes 7-inch touchscreen, AM/FM, Aux/USB, Integrated Voice Command with Bluetooth®, voice text reply, <sup>44</sup> Android Auto™ <sup>29</sup> and Apple CarPlay <sup>27</sup>	*	*							
Uconnect 4 with 8.4-inch Display — Includes 8.4-inch touchscreen, AM/FM, Aux/USB, Integrated Voice Command with Bluetooth, voice text reply, <sup>44</sup> Android Auto, <sup>29</sup> Apple CarPlay <sup>27</sup> and HD radio (packaged with Uconnect Theater with Streaming Package and Premium Audio Group)	P	O/P				*	*		
Uconnect 4C NAV with 8.4-inch Display — Includes 8.4-inch touchscreen, AM/FM, Aux/USB, Integrated Voice Command with Bluetooth, voice text reply, <sup>44</sup> Android Auto, <sup>29</sup> Apple CarPlay, <sup>27</sup> HD radio, Navigation, SiriusXM Guardian, <sup>1418</sup> SiriusXM Traffic Plus <sup>17</sup> and SiriusXM Travel Link <sup>17</sup>	O	O	*	*	*	O	O	*	*
Single Rear Overhead DVD player	O	O				O	O		
Integrated Voice Command — Hands-free <sup>36</sup> communication system	*	*	*	*	*	*	*	*	*
<b>SAFETY &amp; SECURITY</b>									
Air Bags <sup>45</sup> — Advanced multistage driver and front-passenger; includes low-risk deployment	*	*	*	*	*	*	*	*	*
— Driver's- and front-passenger side inflatable knee blocker <sup>45</sup>	*	*	*	*	*	*	*	*	*
— Front-seat-mounted side <sup>45</sup>	*	*	*	*	*	*	*	*	*
— Supplemental side-curtain <sup>45</sup> for outboard passengers in all 3 rows	*	*	*	*	*	*	*	*	*
Blind Spot Monitoring (BSM) <sup>10</sup> with Rear Cross-Path Detection System <sup>7</sup> (packaged with SafetyTec Group)	*	*	*	*	*	*	*	*	*
Child Seat Anchor System (LATCH)	*	*	*	*	*	*	*	*	*
Electric Parking Brake	*	*	*	*	*	*	*	*	*
Electronic Stability Control (ESC) <sup>46</sup>	*	*	*	*	*	*	*	*	*
Full-Speed Forward Collision Warning Plus (FSFCW+) <sup>9</sup> (packaged with Advanced SafetyTec Group)	P	P	P	P	*			P	*
KeySense™	O	O	O	O	*	O	O	O	*
LaneSense® Lane Departure Warning Plus (LDW+) <sup>12</sup> (packaged with Advanced SafetyTec Group)	P	P	P	P	*			P	*
Mopar® Roadside Emergency Kit — Includes travel and safety kit, tool kit, reflecting triangle and first aid kit	O	O	O	O	O	O	O	O	O
Mopar Vehicle Tracking System (limited availability)	O	O	O	O	O	O	O	O	O
Parallel and Perpendicular Park Assist <sup>8</sup> (packaged with Advanced SafetyTec Group)	P	P	P	P	*			P	*
ParkSense® Front/Rear Park Assist with Stop <sup>8</sup> (packaged with Advanced SafetyTec Group)	P	P	P	P	*			P	*
ParkSense Rear Park Assist System with Stop <sup>8</sup> — Assists while parking (not available with Parallel and Perpendicular Park Assist <sup>8</sup> ; packaged with SafetyTec Group)	*	*	*	*	*	*	*	*	*
ParkView® Rear Back-Up Camera <sup>7</sup> (not available with Surround-View Camera <sup>7</sup> )	*	*	*	*	*	*	*	*	*
Remote Keyless Entry	*	*	*	*	*	*	*	*	*
Remote Proximity — All doors	*	*	*	*	*	*	*	*	*
Security Alarm <sup>43</sup>	*	*	*	*	*	*	*	*	*
Surround-View Camera <sup>7</sup> (packaged with Advanced SafetyTec Group)	P	P	P	P	*			P	*
Tire Pressure Monitoring Display	*	*	*	*	*	*	*	*	*
Trailer Sway Control (TSC) <sup>41</sup> (packaged with Trailer Tow Group (with 3,600-lb rating))	P	P	P	P	P				

## Chrysler Pacifica Specifications (continued)

PACKAGES/EQUIPMENT GROUPS	PACIFICA TOURING	PACIFICA TOURING L	PACIFICA TOURING L PLUS	PACIFICA LIMITED	PACIFICA RED S	PACIFICA HYBRID TOURING	PACIFICA HYBRID TOURING L	PACIFICA HYBRID LIMITED	PACIFICA HYBRID RED S
20-Speaker Harman Kardon® Sound Group — Includes 20 speakers and 760-watt amplifier			○	○	•			○	○
Advanced SafetyTec™ Group — Includes Advanced Brake Assist, acoustic windshield and 7-inch Driver Information Display on Touring and Touring L models, Full-Speed Forward Collision Warning Plus (FSFCW+) <sup>9</sup> rain-sensing windshield wipers, Auto High-Beam Headlamp Control, Adaptive Cruise Control (ACC) with Stop and Go, <sup>11</sup> LaneSense® Lane Departure Warning Plus (LDW+) <sup>12</sup> Blind Spot Monitoring (BSM), <sup>10</sup> Surround-View Camera, <sup>7</sup> ParkSense® Front/Rear Park Assist with Stop <sup>8</sup> and Parallel and Perpendicular Park Assist with Stop <sup>7</sup> (Touring and Touring L require Uconnect® 4C NAV with 8.4-inch display)	○	○	○	○	•			○	○
Cold Weather Group — Includes leather-wrapped heated steering wheel, heated front seats and Remote Start <sup>13</sup> on Hybrid Touring	○					○			
Mopar® Interior Protection Package — Includes all-weather floor mats, rear cargo bin Stow 'n Go® storage on non-Hybrid, rear cargo liner, all-weather cargo floor mats and bright door sills	○	○	○	○	○	○	○	○	○
Premium Audio Group — Includes power 8-way front-passenger seat, 13 Alpine® speakers and USB charge port for 3rd row		○					○		
S Appearance Package — Includes body-color door handles, Black Stow n Place® roof rack on Touring L, Touring L Plus, Limited, Hybrid Touring L and Hybrid Limited, body-color mirrors on Limited, Black Chrysler grille wing badge, S badge, Black badging, Black daylight opening (DLO) moldings, premium fascia upper/lower grilles/Black surrounds, leather-wrapped steering wheel on Touring and Hybrid Touring, unique Black Noise aluminum wheels and unique S Appearance Package seats	○	○	○	○		○	○	○	
SafetyTec Group — Includes ParkSense Rear Park Assist with Stop <sup>8</sup> and BSM <sup>10</sup> with Rear Cross-Path Detection System <sup>7</sup>	•	•	•	•	•	•	•	•	•
Trailer Tow Group (with 3,600-lb rating) — Includes trailer tow 7-/4-pin wiring harness, 2-inch hitch receiver, Trailer Sway Control, <sup>41</sup> heavy-duty radiator and 220-amp alternator on Touring, Touring L and Limited	○	○	○	○	○				
Uconnect Theater with Streaming Package — Includes 220-amp alternator, 115-volt auxiliary power outlet, 8-way power front-passenger seat on Touring, wireless headphones, video remote control, HDMI input, two 10-inch seatback touchscreens, video USB port, Blu-ray™/DVD player and Uconnect 4 with 8.4-inch touchscreen on Touring	○		•	○	○			○	○

• = Included. P = Available within Package noted. ○ = Optional.

## Chrysler Pacifica dimensions



## Chrysler Voyager Specifications

ENGINE AND TRANSMISSION	
3.6L Pentastar® Variable Valve Timing (VVT) V6 engine with Engine Stop/Start (ESS) and 9-speed automatic transmission	• •
MECHANICAL FEATURES	
Alternator — 160-amp	• •
— 180-amp (packaged with ESS configuration)	P P
Battery — 650-amp, maintenance-free (packaged with ESS configuration)	P P
— Auxiliary battery (packaged with ESS configuration)	P P
— 730-amp, maintenance-free	• •
Brakes — 4-wheel antilock with discs	• •
Defroster — Rear	• •
Engine Block Heater	O O
Fuel Tank — 19-gallon	• •
EXTERIOR FEATURES	
Badging — Voyager	• •
Door Handles — Black	• •
— Body-color	• •
Glass — Sunscreen	• •
Grille — Black	• •
Headlamps — Automatic	• •
— Halogen	• •
Liftgate — Manual	• •
Mirrors — Foldaway, power, heated, body-color/Black	• •
Roof Rack — Stow n Place® Black	• O
Sill Appliqué — Body-color	• •
Tires — 235/65R17 BSW All-Season	• •
— Tire Service Kit — Includes puncture sealant and portable air compressor	• •
Wheels — 17-inch steel with full cover	• •
— 17-inch fully painted Tech Silver aluminum	• •
Windshield Wipers — Front, variable/intermittent	• •
— Rear wiper/washer	• •
INTERIOR FEATURES	
Air Conditioning — Three-zone Manual Temperature Control	O •
— Driver and Front-Passenger Manual Temperature Control	• •
Door Locks — Power	• •
Lighting — Map/dome reading lamps switchable	• •
— Front and rear LED lamps	• •
— Cargo compartment lamp	• •
— Front, courtesy lamp	• •
— Overhead, ambient surround	• •
Mirrors — Illuminated visor vanity	• •
— Rearview day/night	• •
Power Outlets — Auxiliary, 12-volt in instrument panel	• •
Remote Start System <sup>42</sup> (packaged with Cold Weather Group)	P
Speed Control	• •
Steering Column — Tilt/telescoping	• •
Steering Wheel — Heated (packaged with Cold Weather Group)	P
— Mounted audio controls	• •
— Urethane	• •
— Leather-wrapped (packaged with Cold Weather Group)	P

• • Included. P = Available within Package noted. O = Optional.

INTERIOR FEATURES (continued)	
Storage — Floor tray	• •
— Floor console	• •
— Glove box, locking	• •
— Lower instrument-panel cubby bin	• •
Trip Computer — Electronic Vehicle Information Center (EVIC) with display in instrument cluster, controls mounted on steering wheel	• •
Windows — Front, power with driver's 1-touch up/down, front-passenger 1-touch down (front 1-touch included with SafetyTec™ Group on Voyager L)	P •
— Power front with driver's 1-touch	• •
— Power 2nd-row	• •
SEATING AND TRIM	
Seats — Driver's 4-way power lumbar support (included with power driver's seat)	• •
— 8-way power driver's seat	• •
— Heated front seats (packaged with Cold Weather Group)	P
— Cloth seating	• •
— 2nd-row deluxe bench seats	• •
— Easy slide 2nd-row Captain's Chairs	• •
— 3rd-row Stow 'n Go® 60/40 bench seat that folds in the floor	• •
UCONNECT®	
SiriusXM® Radio <sup>17</sup> (1-year trial subscription)	• •
Sound System — 6 speakers	• •
Uconnect 4 with 7-inch Display — Includes 7-inch touchscreen, AM/FM, Aux/USB, Integrated Voice Command with Bluetooth®, voice text reply <sup>44</sup> , Android Auto™ <sup>29</sup> and Apple CarPlay <sup>9,27</sup>	• •
Single Rear Overhead DVD Player	O
Integrated Voice Command — Hands-free <sup>46</sup> communication system	• •
SAFETY & SECURITY	
Air Bags <sup>45</sup> — Advanced multistage driver and front-passenger; includes low-risk deployment	• •
— Driver's- and front-passenger side inflatable knee blocker <sup>45</sup>	• •
— Front-seat-mounted side <sup>45</sup>	• •
— Supplemental side-curtain <sup>45</sup> for outboard passengers in all 3 rows	• •
Blind Spot Monitoring (BSM) <sup>10</sup> with Rear Cross-Path Detection System <sup>7</sup> (packaged with SafetyTec Group)	P P
Child Seat Anchor System (LATCH)	• •
Electric Parking Brake	• •
Electronic Stability Control (ESC) <sup>46</sup>	• •
ParkSense® Rear Park Assist System with Stop <sup>8</sup> — Assists while parking (packaged with SafetyTec Group)	P P
ParkView® Rear Back-Up Camera <sup>7</sup>	• •
Remote Keyless Entry	• •
Security Alarm <sup>45</sup> (packaged with Cold Weather Group)	P
Tire Pressure Monitoring System	• •
Mopar Roadside Emergency Kit — Includes travel and safety kit, tool kit, reflecting triangle and first aid kit	O O
Mopar Vehicle Tracking System (limited availability)	O O
PACKAGES/EQUIPMENT GROUPS	
Cold Weather Group — Includes leather-wrapped heated steering wheel, heated front seats, security alarm <sup>45</sup> and Remote Start System <sup>42</sup>	O
Mopar Interior Protection Package — Includes all-weather floor mats Stow 'n Go (on Voyager LX), all-weather floor mats (on Voyager L), rear cargo bin Stow 'n Go storage, rear cargo liner, all-weather cargo floor mats and bright door sills	O O
SafetyTec Group — Includes ParkSense Rear Park Assist with Stop <sup>8</sup> , Blind Spot Monitoring (BSM) <sup>10</sup> with Rear Cross-Path Detection System <sup>7</sup> and power front windows with 1-touch up/down on Voyager L model	O O

The Chrysler Pacifica embodies family utility and sleek, sporty style. A wide range of authentic Mopar Accessories, crafted specifically for the versatile ingenuity of the modern Pacifica, lets you take your family's active lifestyle even further. From Sport and Cargo Carriers to Premium Protection Parts, Mopar helps the crew and all its gear go the distance. Visit your local Chrysler dealership to see the full line of Authentic Accessories for the Chrysler Pacifica.

Get more with Mopar®

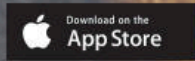
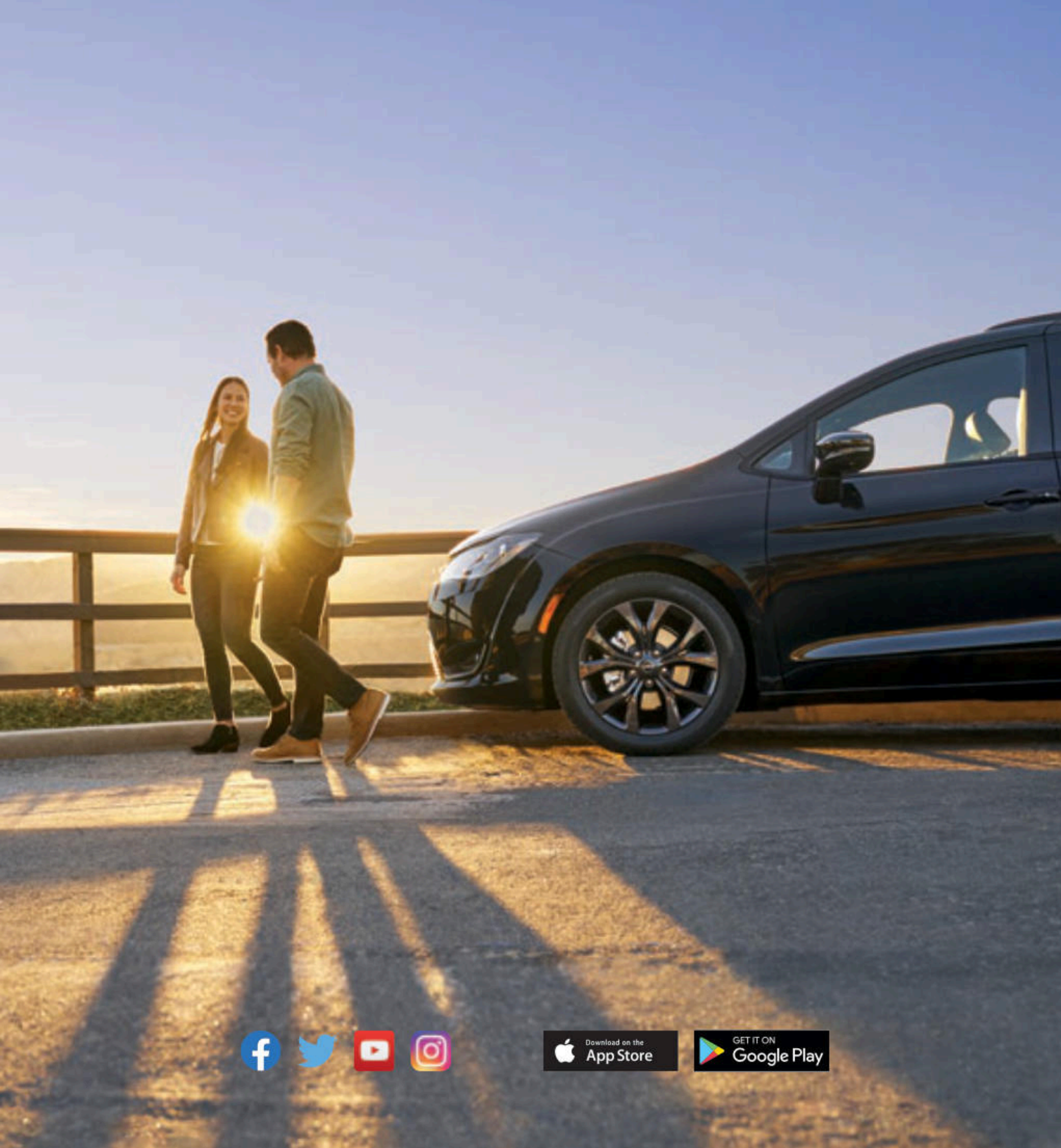


Vehicle is shown with Bodyside Moldings, Roof Rack Kit, Fork-Mount Bike Carrier and Upright Bike Carrier.

Properly secure all cargo.



[mopar.com](https://mopar.com)



#### WARRANTIES

Chrysler Brand vehicles are covered by an FCA US LLC 3-Year or 36,000-Mile Basic Limited Warranty<sup>47</sup> (excludes normal maintenance and wear items) as well as a 5-Year or 60,000-Mile Powertrain Limited Warranty<sup>48</sup> that is fully transferable and includes Roadside Assistance Services: Flat Tire, Lockout, Towing, Out of Gas/Fuel Delivery and Battery Jump Assistance. Ask your dealer for details and a copy of these limited warranties.

#### DRIVEABILITY PROGRAM

The FCA US LLC DriveAbility Program provides aftermarket reimbursement incentives on adaptive vehicle upfit equipment in order to help provide safe and reliable vehicle modifications to enhance accessibility for all people. For more information, call (800) 255-9877 or visit [fcausdriveability.com](http://fcausdriveability.com)

#### OFFICIAL CHRYSLER OWNER SITE AND APP

Your Chrysler Brand vehicle ownership gives you exclusive access to personalized vehicle information, service and maintenance records, recall notifications, roadside assistance, special offers and more through whatever device you prefer — desktop, tablet or smartphone! Register for your Chrysler Vehicle Owner Site account at [mopar.com/chrysler](http://mopar.com/chrysler) or download the **Chrysler For Owners** app for free at either the App or Google Play stores.

#### MOPAR® VEHICLE PROTECTION PLANS

A variety of Protection Plans accepted at all FCA US dealerships have been designed to meet the needs of your unique lifestyle on the road. We stand behind every extended protection plan with certified, factory-trained technicians and the use of original equipment parts. Ask for a Mopar® Vehicle Protection Plan at your dealership, call (800) 442-2666 or visit [mopar.com](http://mopar.com)

#### JOIN IN

Join fellow enthusiasts and tell your story by posting comments, participating in discussions and sharing your Chrysler Brand vehicle photos and videos. Join our community on Facebook ([facebook.com/Chrysler](https://facebook.com/Chrysler)), follow us on Twitter ([twitter.com/Chrysler](https://twitter.com/Chrysler)), YouTube ([youtube.com/TheChryslerChannel](https://youtube.com/TheChryslerChannel)), and check us out on Instagram ([instagram.com/Chrysler](https://instagram.com/Chrysler)). Thank you for following.

#### CHRYSLER DRIVEPLUS<sup>SM</sup> MASTERCARD<sup>®</sup>

Apply today for a Chrysler DrivePlus Mastercard and, upon approval, start earning 5% back on Chrysler dealership purchases, 2% back on gas and travel purchases, and 1% back on purchases everywhere else.<sup>49</sup> Redeem your rewards toward your next service or your next Chrysler purchase. Visit [drivepluscard.com](http://drivepluscard.com) or visit a participating dealer to learn more.

#### CHRYSLER MERCHANDISE

Bring Chrysler Brand distinction to your lifestyle, both in and outside your vehicle, with apparel, personal accessories, gift cards and more. Shop the complete line at [collection.chrysler.com](http://collection.chrysler.com)





(1) Based on available features and the FCA US LLC Premium Minivan segment. (2) Based on the FCA US LLC Premium Minivan segment. (3) Based on the FCA US LLC Premium Minivan segment. Second-row Stow 'n Go not available on Hybrid models. (4) Second-row Stow 'n Go not available on Hybrid models. Hybrid models seat up to seven. (5) Based on cargo volume behind first-row seats. (6) Non-Hybrid models only. (7) Always check entire surroundings visually before proceeding. (8) Always look before proceeding. An electronic drive aid is not a substitute for conscientious driving. Always be aware of your surroundings. (9) This system is an alert system for the front of the vehicle. It is not a substitute for active driver involvement. The driver must remain aware of traffic conditions and be prepared to use the brakes to avoid collisions. (10) Always check visually for vehicles prior to changing lanes. (11) This system is a driver convenience system, not a substitute for active driver involvement. The driver must remain aware of traffic conditions and be prepared to use the brakes to avoid collisions. (12) This system is a driver convenience system, not a substitute for active driver involvement. The driver must remain aware of traffic conditions and maintain control of the vehicle. (13) For supported file formats, refer to the USB Port section of the Owner's Manual or DVD. (14) Certain features require compatible streaming device and may use your device's existing data plan. See dealer for details. (15) Three-month/1GB trial included with the purchase or lease of a new vehicle. Upon expiration of the trial period, purchase of a subscription is required. Wi-Fi Hotspot available through third-party subscription. Requires Internet-enabled mobile device. See dealer for details. This feature is not intended for use by the driver while the vehicle is in motion. Always drive carefully. (16) The Uconnect Phone requires a mobile phone equipped with the Bluetooth Hands-Free Profile. To check phone compatibility, please visit [www.UconnectPhone.com](http://www.UconnectPhone.com). (17) SiriusXM Radio requires a subscription, sold separately or as a package, by SiriusXM Radio Inc. If you decide to continue service after your 12-month trial included with the new vehicle purchase, the subscription plan you choose will automatically renew thereafter and you will be charged according to your chosen payment method at then-current rates. Trial service is not transferable. Fees and taxes apply. Please see the Customer Agreement at [www.siriusxm.com](http://www.siriusxm.com) for complete terms and how to cancel, which includes calling SiriusXM at 1-866-635-2349. All fees and programming are subject to change. Not all vehicles or devices are capable of receiving all services offered by SiriusXM. Data displays and individual product availability vary by vehicle hardware. Current information and features may not be available in all locations, or on all receivers. Weather Forecast. Current Conditions may not be available in all locations. (18) All SiriusXM Guardian equipped vehicles come with a 12-month trial effective on the date of purchase or lease of a new vehicle. Enrollment in the trial is required to receive service. Upon expiration of the trial period, purchase of a subscription is required to continue SiriusXM Guardian. SiriusXM Guardian is available only on equipped vehicles purchased within the United States, Canada and Puerto Rico. Services can only be used where cellular coverage is available. See Uconnect and SiriusXM Guardian Terms of Service for complete service limitations. (19) In the event of a medical or other emergency, press the SOS button to be connected to a Customer Care agent who can direct emergency assistance to your vehicle's location. (20) Roadside Assistance Call provides direct calling to Roadside Assistance Service. Vehicle must be within the United States, Puerto Rico or Canada and have network coverage. Additional roadside assistance charges may apply. Check warranty for details. (21) Remote Vehicle Start is not available on all vehicles. You are responsible for using remote features in accordance with any laws, rules or ordinances in effect wherever you operate your vehicle. (22) To use Vehicle Finder, you must have the Uconnect App with SiriusXM Guardian installed on a compatible smartphone and have an active subscription to SiriusXM Guardian. (23) Send & Go requires a vehicle equipped with a Uconnect 8.4 NAV or Uconnect 4C NAV unit. To use Send & Go, you must have the Uconnect App with SiriusXM Guardian installed on a compatible smartphone and have an active subscription to SiriusXM Guardian. (24) Theft Alarm Notification is compatible with factory-installed alarms only. (25) Stolen vehicle police report required. (26) Compatible with properly equipped Uconnect systems on eligible vehicles. Requires registration of vehicle to SiriusXM Guardian connected services and fulfillment of minimum subscription requirements. Late availability. Amazon, Alexa and all related logos and marks are trademarks of Amazon.com, Inc. or its affiliates. (27) Requires compatible iPhone. See dealer for phone compatibility. Data plan rates apply. Vehicle user interface is a product of Apple. Apple CarPlay is a trademark of Apple Inc. iPhone is a trademark of Apple Inc., registered in the US and other countries. Apple terms of use and privacy statements apply. (28) Requires an iPhone with Siri. Certain features are not available while the vehicle is in motion. iPhone must be within active cellular range. Customer's existing iPhone data rates apply to Internet-supported features. (29) To use Android Auto on your phone screen, you'll need an Android phone running 5.0 or higher and the Android Auto App. Google, Android, Android Auto, YouTube and other related marks and logos are trademarks of Google LLC. (30) EPA-estimated with fully charged battery. Actual mileage may vary. (31) EPA-estimated miles per gallon of gasoline equivalent (MPGe). Actual mileage may vary. (32) EPA-estimated. Actual mileage may vary. (33) See dealer for complete details and a copy of the warranty. (34) This incentive is offered by a third party and is subject to change without notice. Please confirm this information to ensure its accuracy and availability. Consult a tax professional for details and eligibility requirements. (35) Requires purchase and professional installation. See your Chrysler dealer for details. (36) Certain features require a compatible streaming device and may use your device's data plan. See dealer for details. Vehicle must be registered with SiriusXM Guardian and fulfill minimum subscription requirements. Vehicle must also be properly equipped and in an active and usable cellular range. (37) Late availability. (38) EPA-estimated 28 hwy mpg. Based on FCA US LLC Premium Minivan segment. Actual mileage may vary. (39) EPA-estimated 28 hwy mpg. Based on FCA US LLC Premium Minivan segment. Actual mileage may vary. (40) Based on the FCA US LLC Premium Minivan segment. Excludes other FCA US LLC vehicles. (41) Always drive carefully, consistent with conditions. (42) Check state and local laws regarding the use of remote start systems. (43) Vehicle must be locked and system activated for alarm to sound. (44) Voice Text Reply feature requires a compatible mobile device that supports text messaging and Bluetooth. Visit [www.UconnectPhone.com](http://www.UconnectPhone.com) for system and device compatibility. (45) Always sit properly in designated seating positions with seat belts securely fastened at all times. (46) Always drive carefully, consistent with conditions. Always wear your seat belt and obey traffic laws. (47) Visit [Mopar.com](http://Mopar.com) for complete details and a copy of the Basic Limited Warranty. (48) Visit [Mopar.com](http://Mopar.com) for complete details and a copy of the Powertrain Limited Warranty. (49) See the Reward Terms and Conditions in the Summary of Credit Terms provided at time of application for details, including earning, redemption, expiration or forfeiture. Percentage back is earned as points.

©2019 FCA US LLC. All Rights Reserved. Chrysler, Dodge, Jeep, Mopar, Ram, the Chrysler wing design, LaneSense, Mopar Vehicle Protection, Pacifica, ParkSense, ParkView, Pentastar, Stow 'n Go, Stow 'n Place, Stow 'n Vac and Uconnect are registered trademarks and DriveAbility and design, KeySense, SafetyTec, Send & Go and Voyager are trademarks of FCA US LLC.

Alpine and the Alpine logo are registered trademarks of Alpine Electronics, Inc. All rights reserved. Amazon, Alexa and all related logos and marks are trademarks of Amazon.com, Inc. or its affiliates. Apple, Apple Music, App Store, iPhone, iTunes and Siri are registered trademarks and Apple CarPlay is a trademark of Apple Inc. AT&T is a registered trademark of AT&T Knowledge Ventures. Bluetooth is a registered trademark of Bluetooth SIG, Inc. Blu-ray is a trademark of Blu-ray Disc Association, LLC. Facebook and logo are registered trademarks of Facebook, Inc. Google, Android, Android Auto, YouTube and other related marks and logos are trademarks of Google LLC. Harman Kardon is a registered trademark and GreenEdge is a trademark of Harman International Industries, Inc. Instagram is a registered trademark of Instagram, Inc. Mastercard is a registered trademark of Mastercard International, Inc. Pandora is a registered trademark of Pandora Media, Inc. all rights reserved. SiriusXM Connected Vehicles Services Inc., Sirius, XM, SiriusXM and SiriusXM Guardian and all related marks and logos are registered trademarks of SiriusXM Radio Inc. Spotify is a registered trademark of Spotify AB. The Twitter name, logo, Twitter T, Tweet and Twitter bird are service marks of Twitter, Inc. in the United States and other countries.

This brochure is a publication of FCA US LLC. All product illustrations and specifications are based upon current information at the time of publication approval. FCA US LLC reserves the right to make changes from time to time, without notice or obligation, in prices, specifications, colors and materials, and to change or discontinue models, which are considered necessary to the purpose of product improvement or for reasons of design and/or marketing.

5 YEAR / 60,000 MILE<sup>48</sup>  
POWERTRAIN LIMITED WARRANTY

