

# DATSUN

ONE OF THE  
WORLD'S MOST  
EXCITING CARS

## more powerful...

60 HORSEPOWER . . . 50%  
More Than the Leading German Import

## more economical...

FULL SYNCHROMESH  
TRANSMISSION . . . Steering Column Mounted

## more driving ease...

DUAL-TYPE CARBURETOR  
. . . for Greater Power with Less Fuel

## same low price \$1616<sup>p.o.e.</sup>

Price includes: factory undercoat, turn signals, factory balanced wheels, washable vinyl upholstery, oil filter, gas filter, bumper guards, front door arm rests, front and rear ashtrays.

Datsun can be serviced anywhere, anytime. All SAE fittings.

## NOW UP TO 82 MPH, 38 MPG

All of the exciting new engineering and body advances for performance, economy and comfort place Datsun head and shoulders above any car anywhere near its price.

## LOOK AT ALL 3 . . .

Compare where it counts

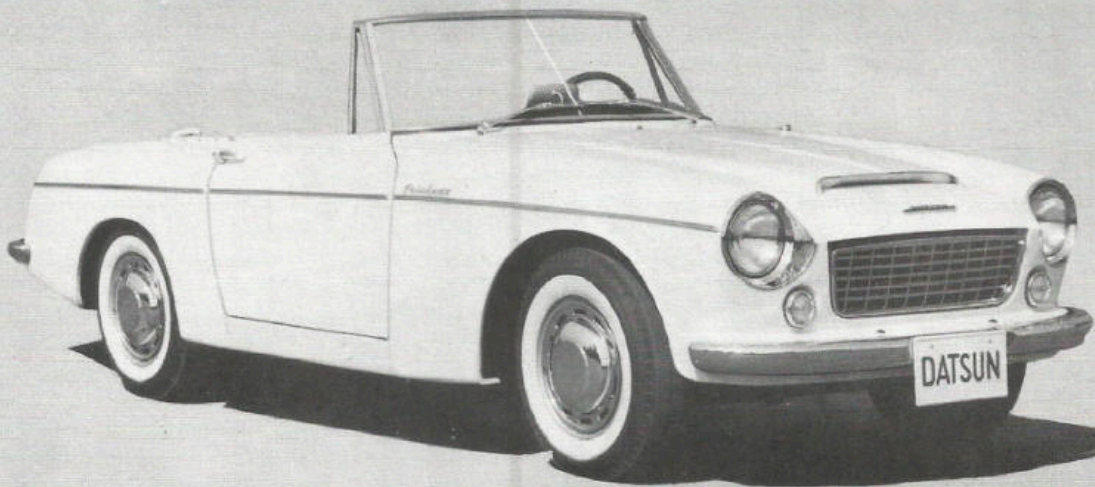
you'll find that Datsun is heavier, more powerful, faster, more economical, safer, more convenient, more comfortable. See and drive a Datsun. We'll rest our case on your opinion.

	DATSUN	Volkswagen	Renault Gordini
3-speed, full synchromesh, column-mounted gearshift	YES	No	No
HORSEPOWER	60	40	40
WEIGHT	2000 lbs.	1631 lbs.	1419 lbs.
TOP SPEED	82 plus	72	78

(competitive info obtained from Manufacturers' brochures)

## 12 MONTHS or 12,000 MILE GUARANTEE

NISSAN MOTOR CORP. in U.S.A. 221 Frelinghuysen Ave., Newark, N. J.  
1501 Clay Ave., Houston, Texas      137 E. Alondra Blvd., Gardena, Calif.



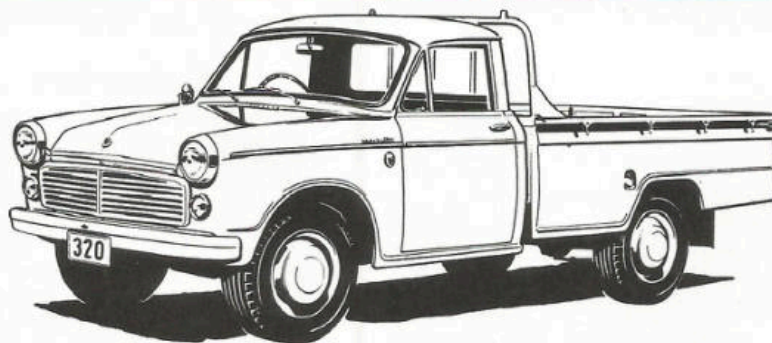
## *new!* **DATSUN** *SPL 310*

*the world's most  
exciting sports car!*

- Power-packed 80 HP engine • Fantastic 4-Speed Gearbox • Dazzling, Astounding performance • Amazing Top Speed • Steadfast Economy • 100 MPH

Brisk and determined motoring,  
mighty muscle, excellent handling  
qualities, sure-footed roadworthiness.

(tentative) **\$1996** p.o.e.



# DATSUN

1/2 TON  
PICKUP

p.o.e. **\$1545**

**A New Trucking Concept Particularly  
Suited to America's Business Needs!**

Here's the truck that delivers more performance per dollar than anything anywhere near its class. Compact in size, it takes bigger payloads, loads quicker and easier, is quality-built with an extra-strong frame and suspension to give countless years of dependable service. It combines small-car economy with heavy duty performance, ease of handling and parking plus an amazing 1870 pound pay load. THE truck, indeed, for metropolitan or suburban deliveries, small or big business . . . THE truck you must see before buying any other.



# TOWN AND COUNTRY... DATSUN LEADS THE WAY



Operates on a key  
and small change.

The Datsun Station Wagon was created for the busy city man... the shopping suburbanite... the traveling family. How well it does all it was created for was discovered by the experts at Road & Track. They put the Datsun through its paces in one of their exacting road tests. The results? We quote: "has very much to offer"... "Finish, trim, panel fit very good"... "the interior is remarkably roomy"... "would cruise forever at 60 MPH"... "it rode very well"... "one of the heaviest for its size"... "a very useful, all-around vehicle"... "Maneuverability is excellent". Need more convincing? Here are some statistics from Road & Track: 82+ MPH top speed... 31 miles per gallon... 2135 lbs. weight (hundreds more than comparable imports).

**\$1916** P.  
O.  
E.

## COMPARE

STATION WAGONS  
DOLLAR FOR DOLLAR  
... DOOR FOR DOOR

Datsun can be serviced anywhere, anytime.  
All SAE fittings.

**12 MONTHS or 12,000 MILE GUARANTEE**

DATSUN	4 DOORS	\$1916.00
RAMBLER AMERICAN	4 DOORS	2130.00
FALCON	4 DOORS	2341.00
CORVAIR	4 DOORS	2407.00
VALIANT	4 DOORS	2381.00

5073



it's here!  
the  
4-wheel drive

# DATSUN Nissan Patrol

## world proven

Work or Play . . . this rugged Nissan Patrol with 4-wheel drive goes through sand or snow, fords streams, climbs grades to 62.5°. For highways, it shifts to economical 2-wheel drive. Powerful 134 hp, 6-cyl. engine cruises at 75 mph. Big—room for 7 people. Available with snow plow and/or front, rear and center power take-off. 1001 uses as a general purpose utility vehicle for home owners, estate owners, and sportsmen as well as for heavy duty business, factory and construction jobs.

**Nissan \$2658<sup>20</sup>** 4-wheel  
**Patrol** "GP" vehicle

**bigger, tougher, roomier,  
more powerful!**

Datsun can be serviced anywhere, anytime. All SAE fittings.

## the most advanced design 4-wheel drive vehicle in the world!

	NISSAN PATROL	JEEP CJ-5	LAND ROVER	INT'L. SCOUT
Gross Vehicle Weight	4575 lbs.	3750 lbs.	NA	NA
Overall Length	148.5"	135.5"	142.4"	154.0"
Wheelbase	86.6"	81.0"	88.0"	100.0"
Tread (Front)	54.4"	48.5"	51.5"	48.0"
Engine	6-cyl. OHV	4-cyl. F-Head	4-cyl. OHV	4-cyl. OHV
Horsepower	134 HP	72 HP	77 HP	93 HP
Displacement (cu. in.)	242	134.2	139.5	152
Fuel Tank Capacity (Gal.)	13.2	10.5	12.0	11.0
Curb Weight	3392 lbs.	2274 lbs.	2900 lbs.	3000 lbs.
Cruising Speed	75 MPH	55 MPH	NA	NA
Turning Radius	198.0"	224.0"	228.0"	258.0"

(competitive info obtained from Manufacturers' brochures)  
**12 MONTHS or 12,000 MILE GUARANTEE**

**NISSAN MOTOR CORP. in U.S.A. 221 Frelinghuysen Ave., Newark, N. J.**  
1501 Clay Ave., Houston, Texas      137 E. Alondra Blvd., Gardena, Calif.