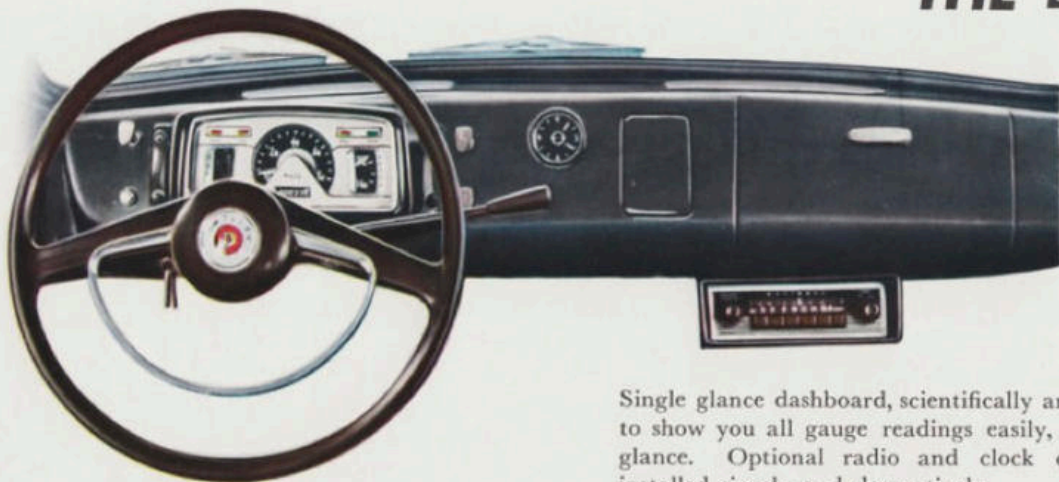


**DATSUN - Combines Rugged Dependability with Comfort and Economy !!**

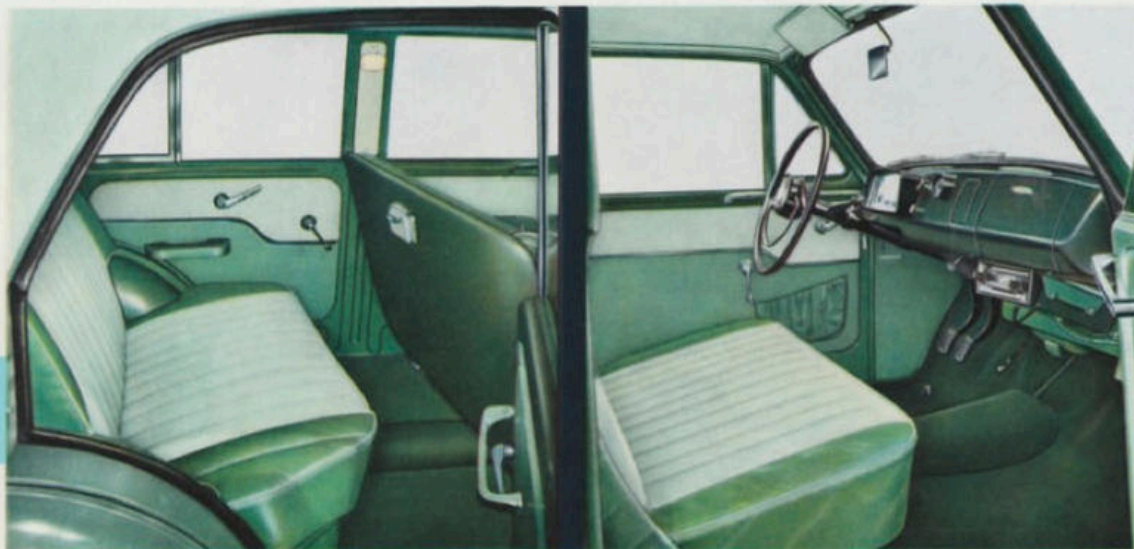
**DATSUN 1000 SEDAN**



## THE LITTLE GIANT FROM JAPAN!!



Single glance dashboard, scientifically arranged to show you all gauge readings easily, at one glance. Optional radio and clock can be installed simply and decoratively.



Beautiful interior with foam-cushioned seats, upholstered in washable fabric. Hand finished and custom designed for luxurious ease.

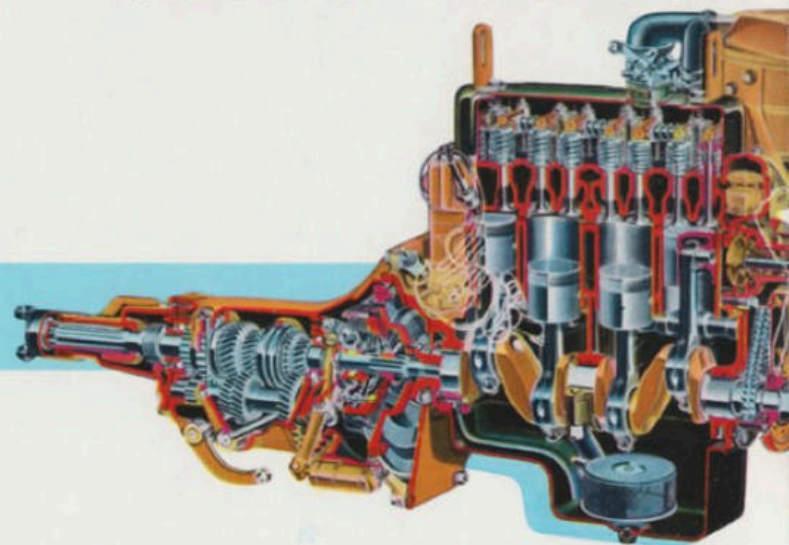
Easy driving with ample leg and head room. Safety glass wide-sweep windshield for wide vision and safe driving.

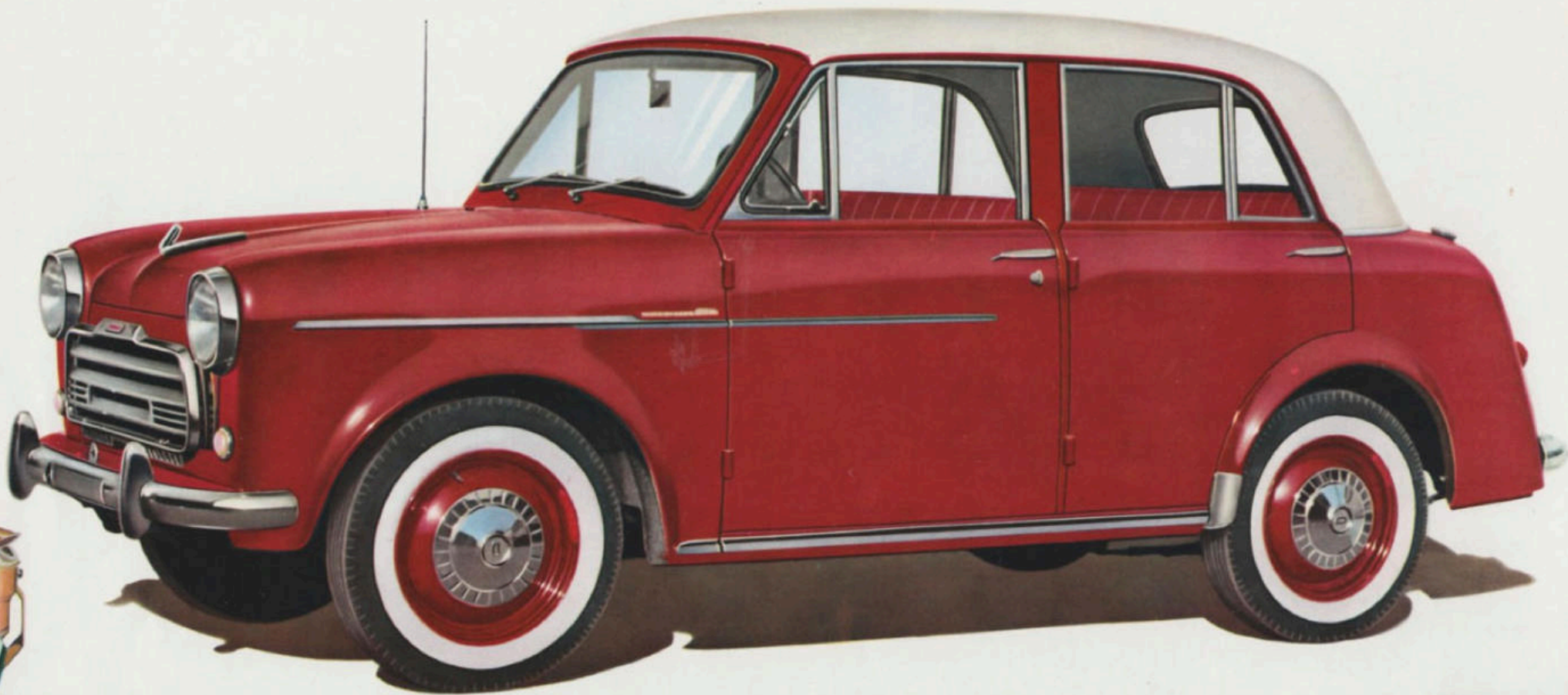
Small in size but big in performance !  
The DATSUN Sedan is a compact, yet durable car with style, speed, power !  
It's comfortable to ride, easy to drive.

# DATSUN

POWERFULL

## 1,000 c.c. ENGINE





***Power, Style and Economy in a compact car !!***

Sports car pick-up, with economical operation at 40 miles per gallon! 37 b.h.p., 4 cylinder 988 cc extra short stroke overhead valve type engine, the result of engineering research and rigid tests.

Choose your car color from a wide range of beautiful shades. Optional extras such as heater, radio, clock and white sidewall tires are available at a small additional charge.



# SPECIFICATIONS

MODEL : 210

## DIMENSIONS & WEIGHT :

Overall length	152.7 ins. (3880 mm)
Overall width	57.7 ins. (1466 mm)
Overall height	59.1 ins. (1500 mm)
Wheelbase	87.4 ins. (2220 mm)
Tread—front	46.1 ins. (1170 mm)
—rear	46.5 ins. (1180 mm)
Vehicle weight	2035 lbs. ( 925 kgs.)
Seating capacity	4 persons
Min. road clearance	6.4 ins. ( 162 mm)

## PERFORMANCE :

Max. speed	75 MPH (120 km/hr.)
Max. grade ability	35%, (optional 45%)
Min. turning radius	197 ins. (5000 mm)
Fuel consumption	40 MPG (16.5km/ltr.at 60 km/hr.)

**ENGINE :** Model C<sub>2</sub>; Gasoline engine in line, water cooled, four-cycle, O.H.V. four-cylinder; Bore 2.875 ins. (73.0 mm); Stroke 2.323 ins. (59.0 mm); Cubic capacity 60.2 cu. in. (988 c.c.); Maximum B.H.P. 37 at 4,600 r.p.m. (SAE rating); Maximum torque 49.2 ft-lb (6.8 kgm) at 2,400 r.p.m.; Compression ratio 7.5 : 1. (ratio 7.0 : 1 also available).

**FUEL SYSTEM :** "Hitachi" Solex carburetor, Type VA-26-6; Mechanical type diaphragm pump; Oil bath type air cleaner; with silencer, Fuel tank capacity 8.6 U.S. gal. (32.5 ltr.).

**LUBRICATION SYSTEM :** Pressure feed with by-pass type oil filter; Gear type pump; Oil pan capacity 0.92 U.S. gal. (3.5 ltr.).

**IGNITION SYSTEM :** Coil and distributor with automatic and vacuum control.

**COOLING SYSTEM :** Pressurized radiator with centrifugal pump, thermostat and fan; Capacity 1.6 U.S. gal. (6.2 ltr.).

**ELECTRICAL SYSTEM :** 12-volt, 40 ampere hour capacity battery; 200 watts generator with voltage regulator; 1.4 H.P. starter motor.

**CLUTCH :** Single dry disc with cushioning springs; Diameter 7.24 ins. (184 mm).

**TRANSMISSION :** 4 speeds forward and 1 reverse; Synchronizing mesh on 2nd, 3rd and top; Change speed lever on steering column; Gear ratio-1st 3.95, 2nd 2.40, 3rd 1.49, top 1.00, reverse 5.16. (optional gear ratio-1st 4.94, 2nd 3.01, 3rd 1.73, top 1.00, reverse 6.46.)

**REAR AXLE :** Hypoid bevel, semi-floating; Gear ratio 5.13 : 1, (optional 5.57 : 1)

**FRONT AXLE :** Reverse Elliot "I" beam section.

**STEERING :** Right or left hand drive; Hindley worm and roller type; Gear ratio 19.6 : 1.

**BRAKES :** Hydraulic internal expanding two-shoe type; Hand brake mechanically operated on rear wheels only.

**FRAME :** Pressed steel box section, all welded.

**SUSPENSION :** Longitudinal semi-elliptic springs front and rear, front 5 leaves, rear 6 leaves.

(optional, 7 leaves, front and rear.)

Telescopic shock absorbers, front and rear.

Stabilizing bar, front and rear. (optional, rear only.)

**WHEELS AND TIRES :** Steel disc wheels, 5.00-15, 4 ply tires.

**LAMPS :** Two head lamps with dipping; Two parking and front flashing direction indicator lamps; Two combined stop, tail and flashing direction indicator lamps; Rear number plate lamp; Room lamp.

**INSTRUMENTS :** Speedometer; Fuel gauge; Water temperature gauge; Oil pressure warning light; Ignition warning light; Flasher pilot light; Main beam warning light; instrument panel also includes ignition switch, lighting switch, choke control knob, windshield wiper switch.

**BODY WORK :** Four seat, four door sedan; All steel body; Dual windshield wipers; Glove box on instrument panel; Back mirror; Ash trays front and rear; Fresh air control.

**ACCESSORIES :** Tool set; Spare wheel and tire.

(These specifications are subject to change without notice.)

## FOREIGN TRADE DIVISION

Nissan Bldg., Shiba Tamura-cho, Minato-ku, Tokyo, Japan.

NISSAN

NISSAN MOTOR CO., LTD.

