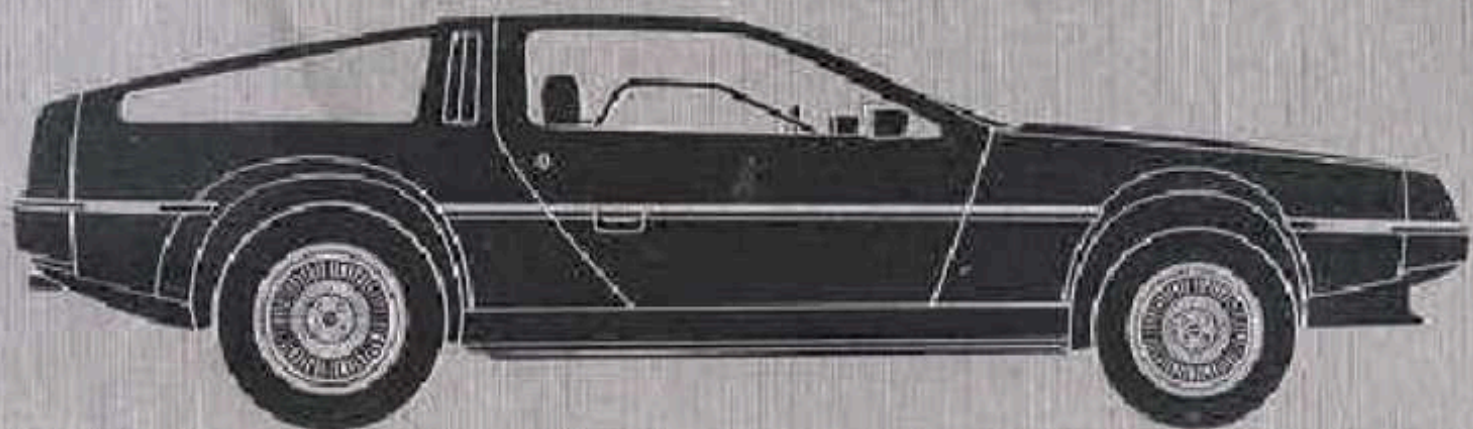


DE LOREAN



PRESENTING
THE DE LOREAN

DE LOREAN - the man, the company, the car

After 25 years of spectacular personal accomplishments in the automotive industry, John Z. DeLorean was convinced that it was possible to build a car with a useful life of more than just a few years. A total performance car that would be economical to run and safe to drive, without compromising quality and comfort for price. With the founding of the De Lorean Motor Company in 1975, he set out to prove it could be done

It was an ambitious project, and only experts were called to the task. Top engineers and designers rendered the De Lorean concept with vision and foresight using corrosion resistant materials and new technology, and in just a few short years the dream began to take shape.

There is a new car on the road today. A car built with great care and commitment; a car that defies convention and challenges the future. long-awaited transportation revolution has now begun, and a leader has emerged to show us the way . . . the De Lorean



DE LOREAN - the next generation

The De Lorean sparks the imagination like a classic vision of things to come.

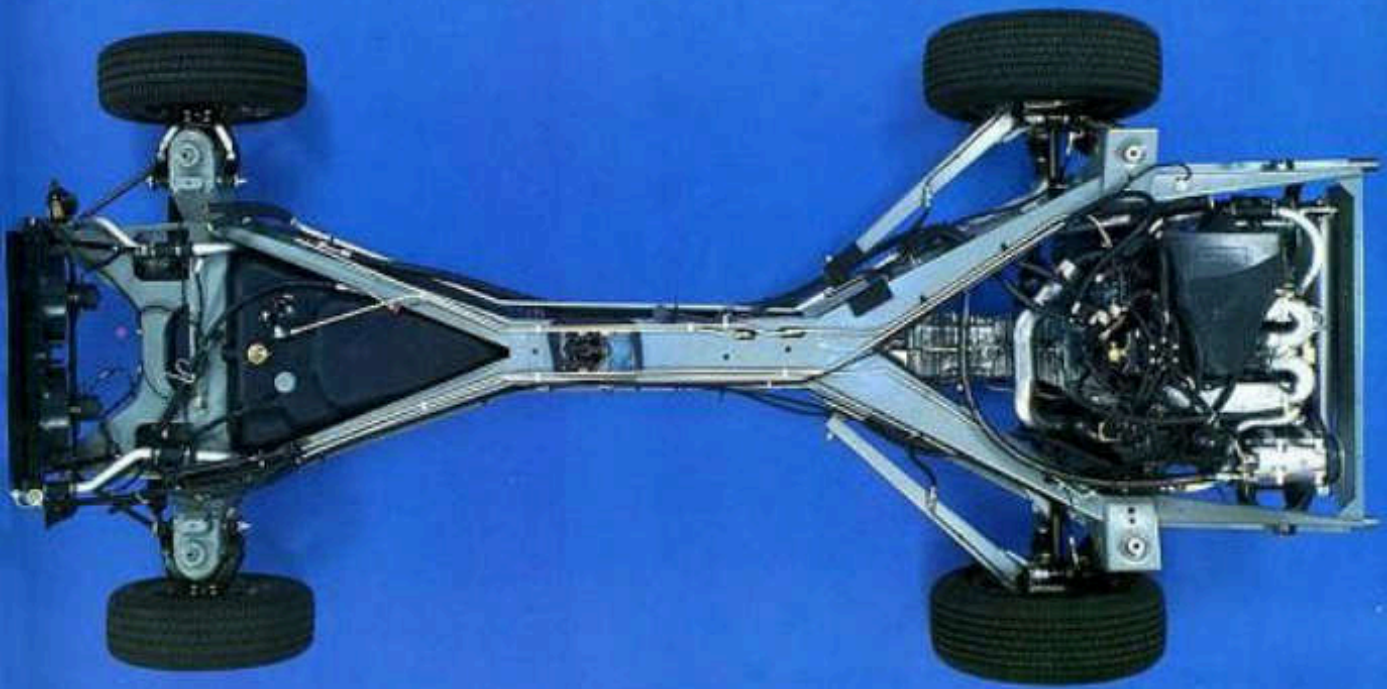
New materials, new technology and traditional values masterfully joined in a showcase of contemporary engineering. It's precisely counterbalanced gull-wing doors rise on cryogenically preset torsion bars and need only 14v inches of side clearance. The softly brushed stainless steel exterior cannot fade or chip. Even the sporty rear louvers have been carefully designed to minimize aerodynamic drag, while they reduce window glare. Because you simply cannot create a masterpiece with arbitrary lines . . .

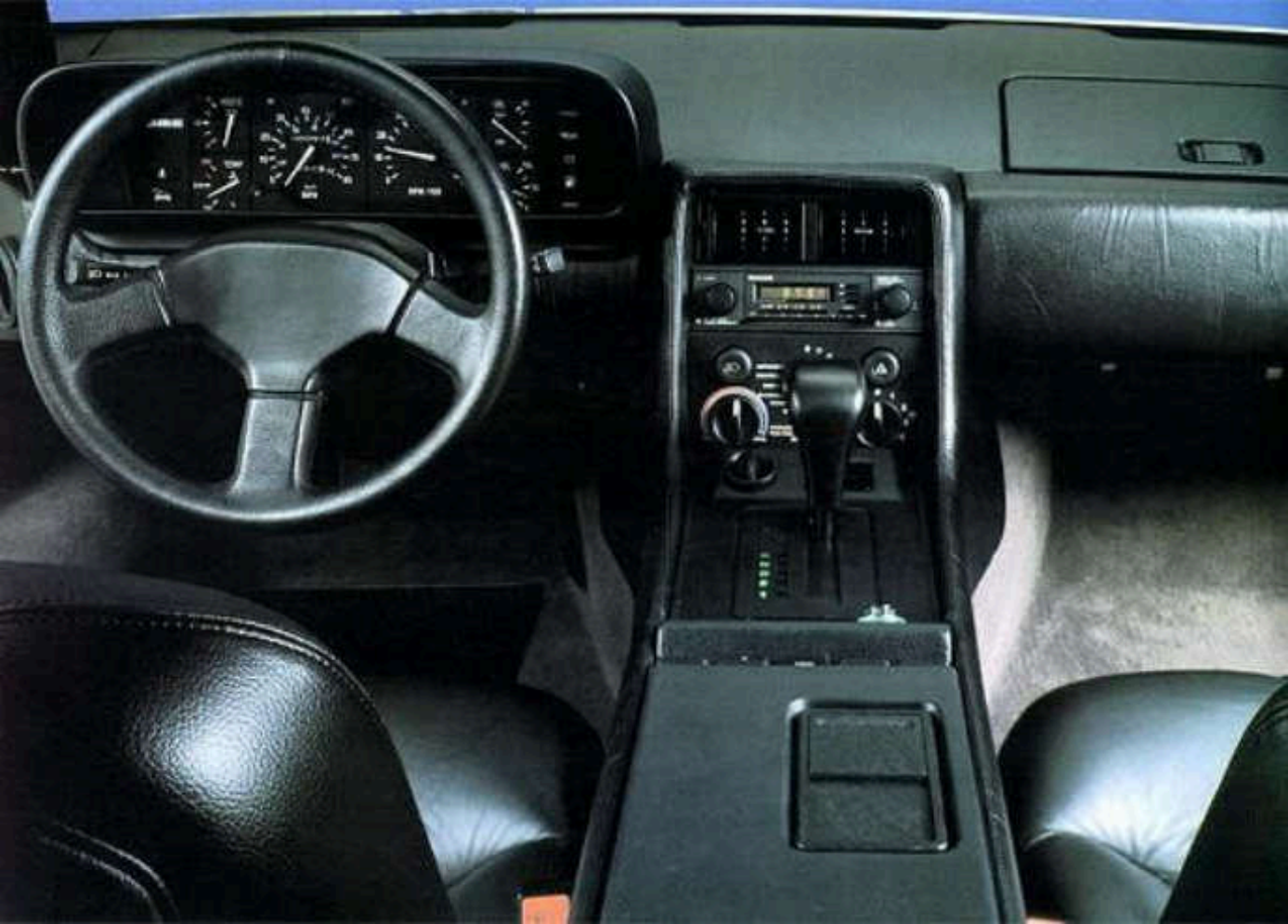


DE LOREAN - distinctive looks from any direction

The clean, uncluttered lines of the De Lorean's elegant low profile bear the unmistakable touch of true classic styling. Complementary protective side trim runs the length of the automobile; halogen headlights, side markers and high intensity backup lights provide maximum visibility and safety while driving after dark. Even the semi-rigid bumpers have been endowed with a "memory" which helps them return to their proper shape after a minor mishap. All of these, and more, are only part of De Lorean Motor Company's serious commitment to total driver satisfaction.













DE LOREAN - engineered for total performance

It's more than just the end result of clever engineering and good workmanship - total performance is the absolute standard against which each individual De Lorean component must be judged. A good example of this is the special treatment of the all-steel backbone chassis. It is actually sealed in fusion-bonded epoxy to protect it from corrosion. Or the way the 35/65 rear weight bias enables fully independent suspension to combine with rack and pinion steering for fast, sensitive handling response that needs no power assistance. They really let you feel the road - not just follow it!

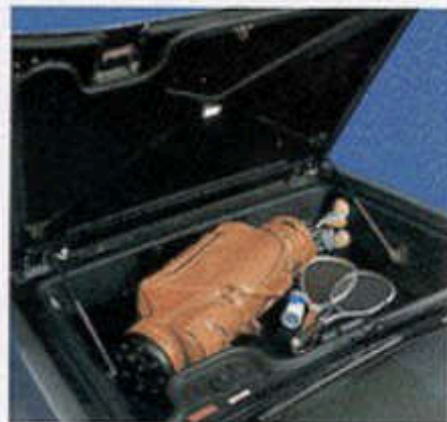
Nestled within the arms of the rugged backbone chassis, there's a healthy and fuel-efficient 2.85 liter V6 power plant that employs Bosch K-Jetronic mechanical fuel injection and develops 130 SAE net horsepower at 5500 rpm. So whether you've selected the standard full synchro 5 speed transmission or the optional 3 speed automatic, you're in for a thoroughly rewarding experience when you drive a De Lorean

Performing also means a 4-wheel disc braking system for progressive, fade-free stopping power. NCT steel belted radials for sure traction when it counts. Both of which become an integral part of the De Lorean driving experience



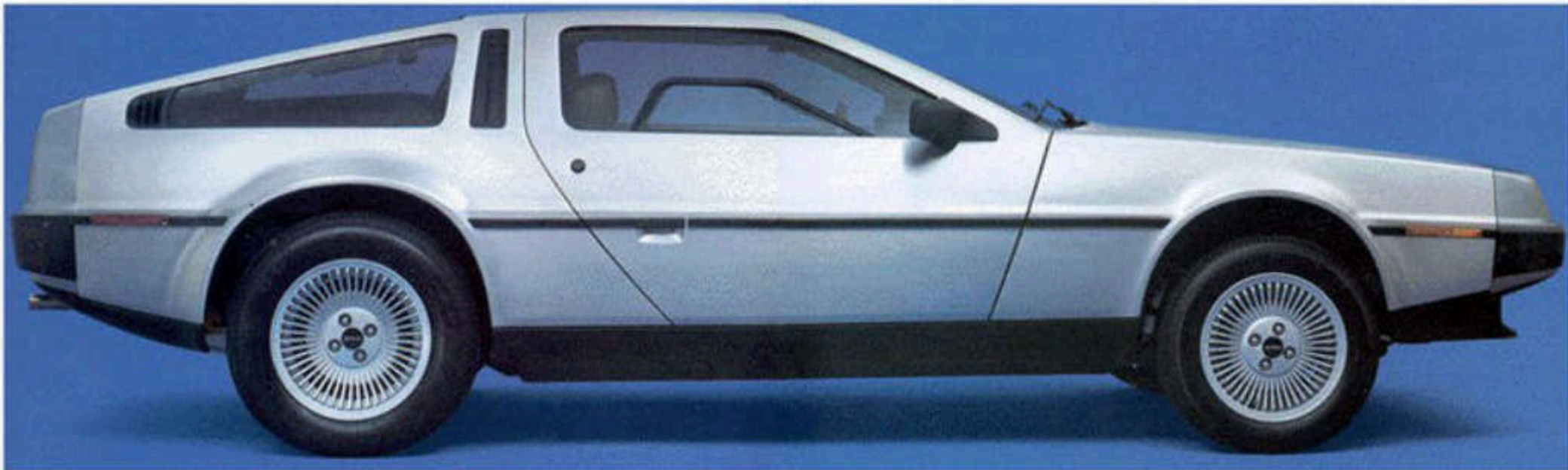
DE LOREAN - matchless detail for comfort and convenience

It's called a cockpit, and for very good reason. Every inch of the De Lorean's interior space has been carefully planned to provide optimum comfort and convenience: fully adjustable seats and power windows; a tilting, telescoping steering column; double weather seals, air conditioning and a seven position dual system of total climate control; full instrumentation and dual electric remote side view mirrors; variable speed windshield wiper/washer; extra storage space right behind the seats; centralized door locking and an AM/FM stereo cassette radio with Dolby noise reduction system, electronic channel selection memory and digital frequency display. Truly an impressive array of standard features and equipment.

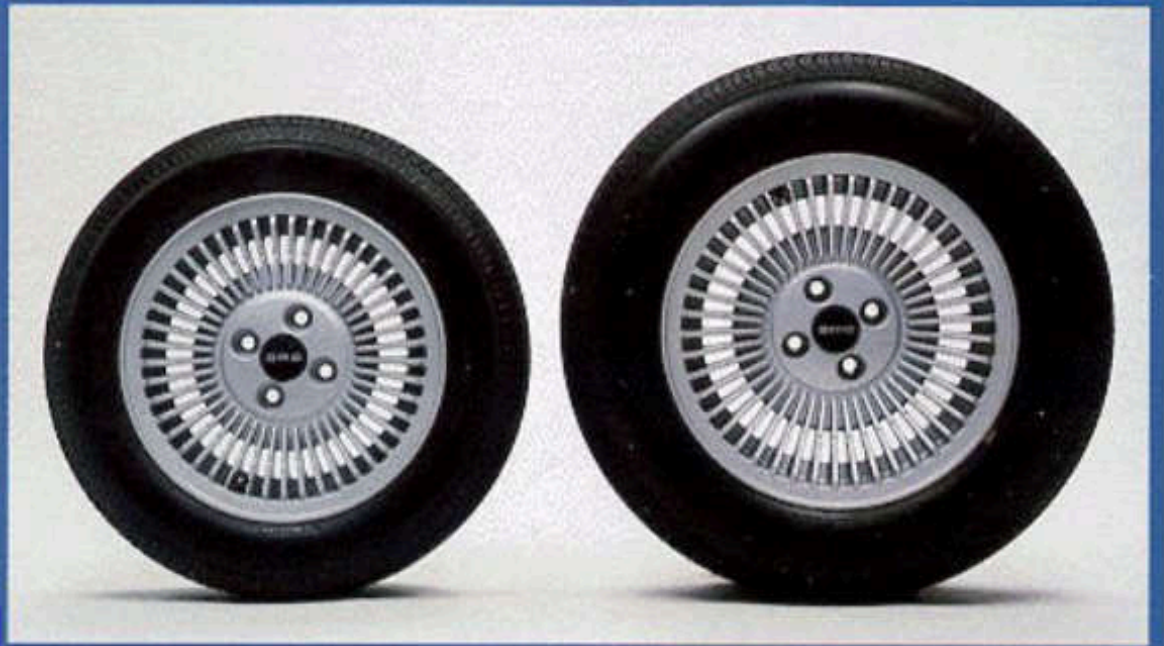
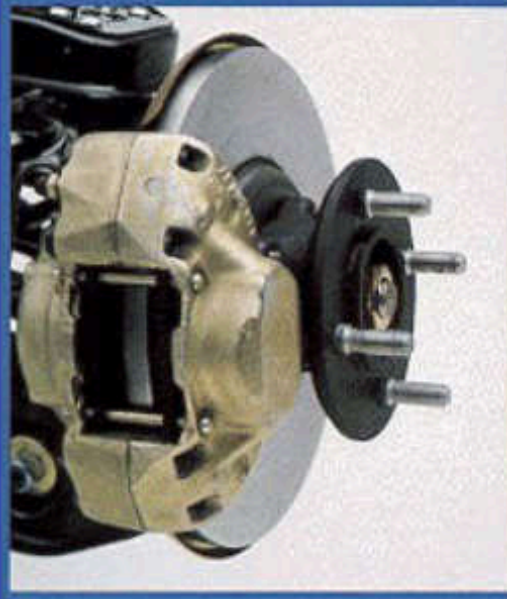
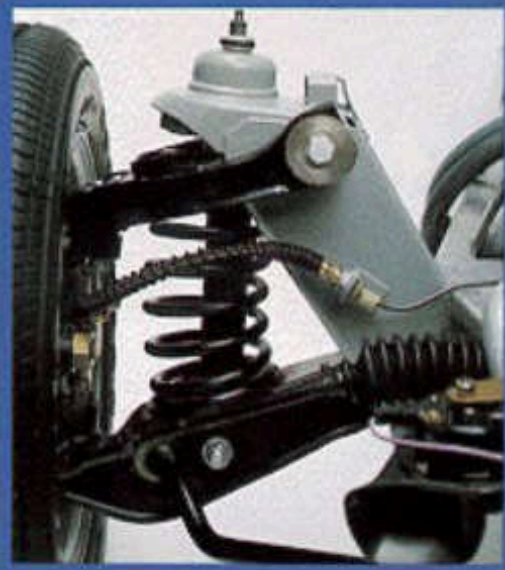
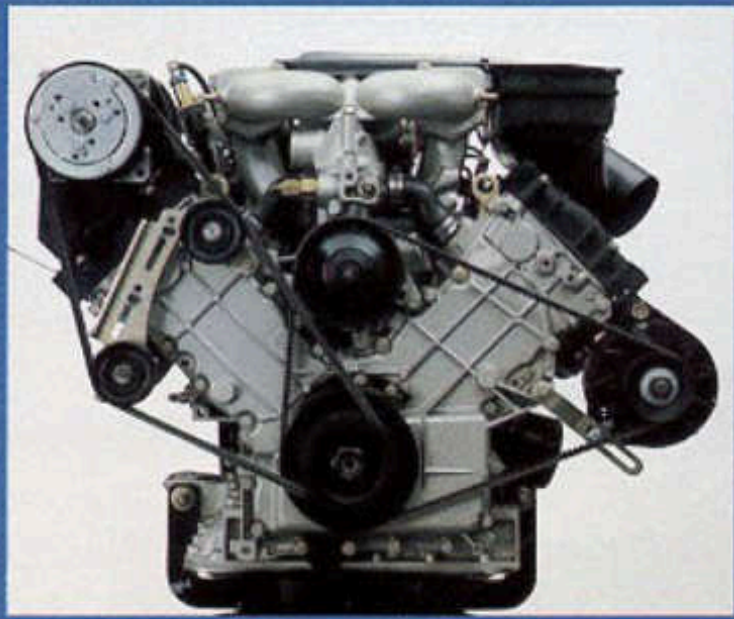












DE LOREAN—anatomy of excellence

DeLorean vehicle specifications

ENGINE

Type: light-alloy 90° V6 with overhead camshafts
Displacement: 2.85 liters (174 cu. in.)
Bore and stroke: 91 x 73mm
Compression ratio: 8.8:1
Block: light-alloy with cast iron cylinder liners
Heads: light-alloy, cross-flow hemi-chambers
Cooling system: water/ethylene glycol, forward radiator with twin thermostatically controlled electric cooling fans
Fuel System: C.I.S. Bosch K-Jetronic mechanical fuel injection
Ignition system: breakerless, electronic Bosch
Emission control: Lambda Sond/catalytic, unleaded fuel

DRIVE TRAIN

Engine location: rear mounted
Transmission: 5-speed fully synchronized or 3-speed automatic
Final drive: transaxle/double universal half-shafts, ratio 3.44:1

BODY AND CHASSIS

Underbody: composite structure
Outer panels: brushed stainless steel, grade 304
Construction: corrosion protected steel backbone frame supporting cross members and 4-wheel independent suspension

SUSPENSION

Front: unequal length upper and lower control arms, coil springs, telescopic shocks and stabilizer bar
Rear: diagonal trailing radius arms with upper and lower links, coil springs with telescopic shocks

STEERING

Type: rack and pinion
Minimum turning radius: 5.334 meters (17.5')
Turning circle: 10.67M, curb to curb (35')
Wheel turns, lock to lock: 2.65

BRAKES

Type: power assisted discs, front and rear
Disc diameter: 254mm (10") front, 267mm (10.5") rear

Parking brake: mechanical, self adjusting, acting on rear discs

WHEELS/TIRES

Wheels: cast light-alloy, 357mm x 152mm (14" x 6") front; 381mm x 203mm (15" x 8") rear;
Tires: steel belted radial, Goodyear NCT

DIMENSIONS AND CAPACITIES

Wheelbase: 2408mm (94.8")
Track: 1590mm (62.6") front; 1588mm (62.5") rear
Length overall: 4267mm (168.0")
Width overall: 1988mm (78.3")
Height: 1140mm (44.88")
Weight, with full tank: 1233kg (2712 lbs.)
Fuel capacity: 51.6 liters (13.2 gal.)
Luggage capacity: 396 liters (14 cu. ft.)

ADDITIONAL STANDARD FEATURES

Stainless steel body panels
Counterbalanced gull-wing doors
Body side moldings
Tinted windows

Intermittent windshield wipers
Halogen headlamps
Engine/luggage compartment lights
Interior hood and engine compartment release

ADDITIONAL STANDARD EQUIPMENT

Air conditioning
AM/FM stereo radio w/cassette and CD player
Power windows
Central door locking system
Tilt and telescopic steering column
Dual electric remote side view mirrors
Cast light-alloy wheels
Electric rear window defogger
Electric tachometer
Locking gas cap

Specifications & equipment based on the available information at time of printing are subject to change without notice.

*DeLorean Motor Company
2055 Southeast Main St.
Irvine, California 92714*

DE LOREAN - where it all comes together

The DeLorean Motor Company's assembly subsidiary is situated on a carefully planned 72 acre site in Dunmurry, Northern Ireland. Five major structures comprising more than 650,000 square feet have been designed and equipped exclusively for the assembly and testing of the De Lorean. But extensive use of advanced production technology is not the plant's only distinction.

Worker environment has been a special consideration at the De Lorean plant, from initial design through the production today. Unlike

the traditional assembly method in which each worker repeats a single, monotonous task again and again, De Lorean employees perform several different jobs as members of a team. The absence of congestion and assembly-line pits add to the pleasant working atmosphere. This extra attention to the personal satisfaction and pride of accomplishment of the De Lorean labor force is clearly reflected in the most tangible way: the consistently superior quality of workmanship you can expect to find in every De Lorean

*Total comfort, total performance, total commitment
... totally De Lorean*





DE LOREAN

