


2013   
DODGE AVENGER





AVENGER SXT SHOWN IN BLACK WITH AVAILABLE BLACKTOP PACKAGE.



EQUIPPED WITH ENGINE OPTIONS THAT SWIFTLY AND EFFICIENTLY MOVE IT BEYOND THE STEREOTYPICAL SEDAN MINDSET. OUTFITTED WITH HIGHLY SCULPTED, DRAMATICALLY DETAILED DESIGN. SHREWDLY ENGINEERED WITH 21<sup>ST</sup>-CENTURY COMFORT AND TECHNOLOGY. AVENGER IS THE MID-SIZE SEDAN THAT PUTS IN OVERTIME TO ENSURE THAT EVERY MILE LOGGED YIELDS BIG-TIME RESULTS.

---

AMERICA'S MOST-AFFORDABLE MID-SIZE CAR<sup>(1)\*</sup> // AVAILABLE 283-HORSEPOWER AWARD-WINNING 3.6L PENTASTAR<sup>®</sup> V6 ENGINE // IMPRESSIVE V6 HIGHWAY FUEL ECONOMY OF 29 MPG<sup>1</sup> // OFFERS 31 HIGHWAY MPG<sup>(2)</sup> WITH 2.4L ENGINE AND SIX-SPEED AUTOMATIC // PREMIUM INTERIOR WITH SOFT-TOUCH SURFACES // AVENGER — A 2012 INSURANCE INSTITUTE FOR HIGHWAY SAFETY (IIHS) TOP SAFETY PICK // RACE-INSPIRED AVENGER R/T MODEL // NEW AVAILABLE RALLYE APPEARANCE GROUP // NEW AVAILABLE LEATHER INTERIOR ON SXT // NEW BLACKTOP PACKAGE

\*A NOTE ABOUT THIS BROCHURE: ALL DISCLAIMERS AND DISCLOSURES CAN BE FOUND ON THE LAST PAGE.  
<sup>1</sup>EPA ESTIMATED 19 CITY/29 HIGHWAY MPG.




RALLYE APPEARANCE  
GROUP

*GET YOUR GAME FACE ON.* THE RALLYE APPEARANCE GROUP BUILDS OFF THE STANDARD AND AVAILABLE FEATURES OF AVENGER SXT AND PUTS ITS OWN SPIN ON THE DETAILS. THE BODY-COLOR GRILLE AND AUTOMATIC HEADLAMPS GET A BOLDER LOOK WITH BLACK ACCENT TREATMENTS. AN ADDED TRUNK LID SPOILER, AVAILABLE DUAL CHROME-TIPPED EXHAUST, AND STANDARD 18-INCH ALUMINUM WHEELS ACCENTUATE THE FIERCE EXTERIOR. OPT FOR THE AVAILABLE 283-HORSEPOWER 3.6-LITER PENTASTAR® V6 ENGINE FOR A MORE EXHILARATING RIDE. THE INTERIOR IS JUST AS INTENSE WITH A CHOICE OF SPORTY PREMIUM CLOTH OR AVAILABLE LEATHER-TRIMMED SEATS, OR RALLYE-ONLY RACE-INSPIRED RED AND BLACK CLOTH SURFACES.



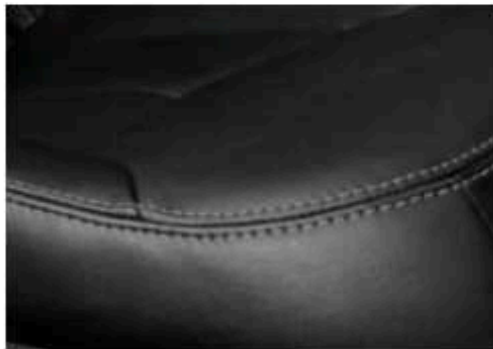
AVENGER SXT SHOWN IN BLACK WITH AVAILABLE RALLYE APPEARANCE GROUP.

---



---

**ATTENTION TO DETAIL.** SIT DOWN AND RELAX, BECAUSE THE PREMIUM CRAFTSMANSHIP OF AVENGER'S INTERIOR WILL MAKE EVEN THE RUSH-HOUR COMMUTE MORE PLEASANT. EVERY MODEL FEATURES SPACIOUS SEATING AND SOFT-TOUCH SURFACES. SELECT FROM TRIM LEVELS OFFERING PREMIUM CLOTH, CLOTH WITH LEATHER BOLSTERS, OR SUPPLE LEATHER-TRIMMED SEATING SURFACES. INTERIOR LED LIGHTING FURTHER ENHANCES THE AMBIENCE WHILE INSTRUMENT PANEL GAUGES EMIT A COOL BLUE-GREEN GLOW. YOU'LL FIND POWER IN MORE PLACES THAN UNDER THE HOOD. THERE'S STANDARD POWER WINDOWS, LOCKS, AND MIRRORS, AND AVAILABLE POWER EIGHT-WAY DRIVER'S SEAT AND HEATED DRIVER AND FRONT-PASSENGER SEATS. THE AVAILABLE AUTOMATIC TEMPERATURE CONTROL (ATC) KEEPS THE ENVIRONMENT JUST RIGHT. PASSENGER AND CARGO POTENTIAL IS MAXIMIZED WITH A STANDARD 60/40 SPLIT-FOLDING REAR SEAT WITH TRUNK PASS-THROUGH TO MAKE ROOM FOR LONGER LOADS — LIKE SKIS. ACOUSTIC LAMINATED WINDSHIELD AND FRONT SIDE GLASS ACT AS A BARRIER TO UNWANTED ROAD NOISE SO YOU CAN FULLY ENJOY THE SOUND SYSTEM, THE CONVERSATION, OR YOUR QUIET THOUGHTS.



UNIQUE R/T CENTER-MOUNTED TACHOMETER SHOWN ABOVE.



AVENGER SXT SHOWN WITH AVAILABLE BLACK LEATHER-TRIMMED SEATS.





SIRIUS Travel Link



Favorites



Forecast



Ski Info



Fuel Prices



Movie Times



Sports

3:43

SAT 107

EXIT

MP3 - WMA - JPEG

SIRIUS

HARD DISC DRIVE



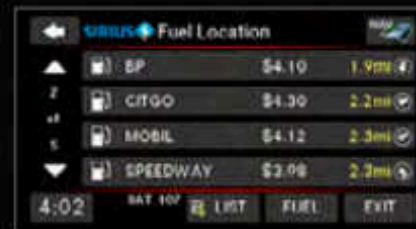
## WELL-CONNECTED

ENGINEERED WITH TECHNOLOGY, AVENGER AND UCONNECT® HELP KEEP YOU CLOSE TO YOUR FAVORITE PEOPLE, MUSIC, AND PLACES.

UCONNECT FEATURES EASY-TO-NAVIGATE ICONS FOR RADIO AND SIRIUSXM SATELLITE RADIO<sup>[1]\*</sup> CONTROLS, PERSONAL DEVICES SUCH AS AN IPOD® OR SMARTPHONE, AND AVAILABLE NAVIGATION AND BLUETOOTH® COMPATIBLE PHONES. BRING ALONG YOUR OWN TUNES VIA REMOTE USB PORT WITH IPOD MOBILE DEVICE CONTROL, OR BLUETOOTH WIRELESS STREAMING. THE USB PORT CAN ALSO CHARGE YOUR COMPATIBLE DEVICES.

WITH AVAILABLE VOICE COMMAND<sup>[4]</sup> AND FRONT- AND REAR-MOUNTED STEERING WHEEL CONTROLS, THERE'S NO TAKING YOUR HANDS OFF THE WHEEL OR EYES OFF THE ROAD. GIVE VOICE COMMANDS FOR THINGS LIKE PHONE OPERATION, RADIO/CD FUNCTIONS, AND ACCESSING YOUR DIGITAL MEDIA PLAYERS.

OPT FOR THE PREMIUM NAVIGATION FOR TURN-BY-TURN DIRECTIONS, LANE GUIDANCE, OR LOCATING NEARBY RESTAURANTS, SHOPPING, HOSPITALS, OR LOCAL POINTS OF INTEREST. WITH SIRIUSXM TRAFFIC,<sup>[3]\*</sup> COMPREHENSIVE TRAFFIC INFORMATION IS SENT DIRECTLY TO YOUR AVENGER. THIS INCLUDES UPDATED INFORMATION ON TRAFFIC SPEED AND FLOW, ACCIDENTS, CONSTRUCTION, AND ROAD CLOSURES. SIRIUSXM TRAVEL LINK<sup>[2]</sup> BRINGS LOCAL AND NATIONAL WEATHER FORECASTS, FUEL PRICES FOR LOCAL GAS STATIONS, IN-GAME AND FINAL SPORTS SCORES, WEEKLY SPORTS SCHEDULES, AND LOCAL MOVIE THEATER LISTINGS RIGHT TO YOUR VEHICLE. FOR MORE INFORMATION, GO TO [DRIVEUCONNECT.COM](http://DRIVEUCONNECT.COM) \*FIRST YEAR OF SERVICE IS INCLUDED.





MOST-POWERFUL<sup>151</sup> MID-SIZE CAR —  
283-HORSEPOWER V6

AVENGER R/T SHOWN IN BILLET SILVER METALLIC.



*WHO DOESN'T LIKE SEEING MORE MONEY IN THEIR WALLET AND SPENDING LESS TIME AT THE PUMP?* CHOOSE AVENGER'S 31 MPG<sup>(1)</sup> 173-HORSEPOWER 2.4-LITER 4-CYLINDER ENGINE WITH DUAL VARIABLE VALVE TIMING (VVT) AND MATE IT TO THE AVAILABLE SIX-SPEED AUTOSTICK TRANSMISSION FOR MAXIMUM POWER AND EFFICIENCY.

*POWERFULLY FUEL-EFFICIENT, AWARD-WINNING 3.6-LITER DOHC PENTASTAR® VVT V6.* THIS ENGINE HAMMERS OUT 29 HWY MPG,\* 283 HORSEPOWER, AND 260 LB-FT OF TORQUE. THE ONLY THING BETTER THAN NUMBERS LIKE THESE ARE LOW EMISSIONS; FIRST-RATE NOISE, VIBRATION, AND HARSHNESS (NVH) CONTROL; AND THE ENGINE'S DURABILITY-ENHANCING FEATURES THAT REQUIRE VERY LOW MAINTENANCE.

NOT ONLY WILL YOU FIND RESPONSIVE STEERING AND CONFIDENT HANDLING ON EVERY AVENGER MODEL, YOU'LL ALSO FIND A SUSPENSION WITH MACPHERSON STRUTS UP FRONT AND MULTILINK COILS IN THE BACK FOR A FUN AND SPORTY DRIVING EXPERIENCE.

*AVENGER R/T — BEST-IN-CLASS<sup>(6)</sup> HORSEPOWER AND 29 HWY MPG.\** R/T FLEXES ITS MUSCLE WITH 283 HORSEPOWER AND SIX-SPEED WITH AUTOSTICK, WHILE A SPORT-TUNED SUSPENSION AND INCREASED SPRING RATES, REAR STABILIZER BAR DIAMETER, AND DAMPING FORCES OF BOTH THE FRONT STRUTS AND REAR SHOCKS BOOST PERFORMANCE. ITS BOLD EXTERIOR DIGS DEEPER WITH UNIQUE 18-INCH WHEELS, BODY-COLOR GRILLE INSERT, BLACKED-OUT HEADLAMP BEZELS, HOOD-TO-FENDER STRIPE, AND R/T BADGE. INSIDE, SPORTY CLOTH SEATS WITH Z-STRIPE DESIGN AND LEATHER BOLSTERS, PERFORMANCE-INSPIRED INSTRUMENT CLUSTER, PERFORATED LEATHER-WRAPPED STEERING WHEEL WITH RED STITCHING, RED LED AMBIENT LIGHTING, AND PERFORMANCE-STYLE PEDALS ENERGIZE AVENGER'S CABIN.

\*BASED ON EPA ESTIMATED 19 CITY/29 HWY MPG.



**BLACKTOP.** IT STARTS WITH THE WELL-CONTENTED AVENGER SXT TRIM LEVEL AND ADDS ATTITUDE WITH A MENACING GLOSS BLACK GRILLE, DARK-TINTED HEADLAMPS, 18-INCH GLOSS BLACK ALUMINUM WHEELS, AND TRUNK LID SPOILER. INSIDE, CHOOSE BETWEEN BLACK CLOTH OR AVAILABLE LEATHER-TRIMMED SEATING. AVAILABLE IN BILLET SILVER METALLIC, BRIGHT WHITE, BLACK, TUNGSTEN METALLIC, OR REDLINE 2 COAT PEARL.

AVENGER SXT SHOWN IN REDLINE 2 COAT PEARL WITH AVAILABLE BLACKTOP PACKAGE.



5 YEAR/100,000 MILE  
POWERTRAIN WARRANTY\*\*

## AVENGER — A 2012 INSURANCE INSTITUTE FOR HIGHWAY SAFETY (IIHS) TOP SAFETY PICK.

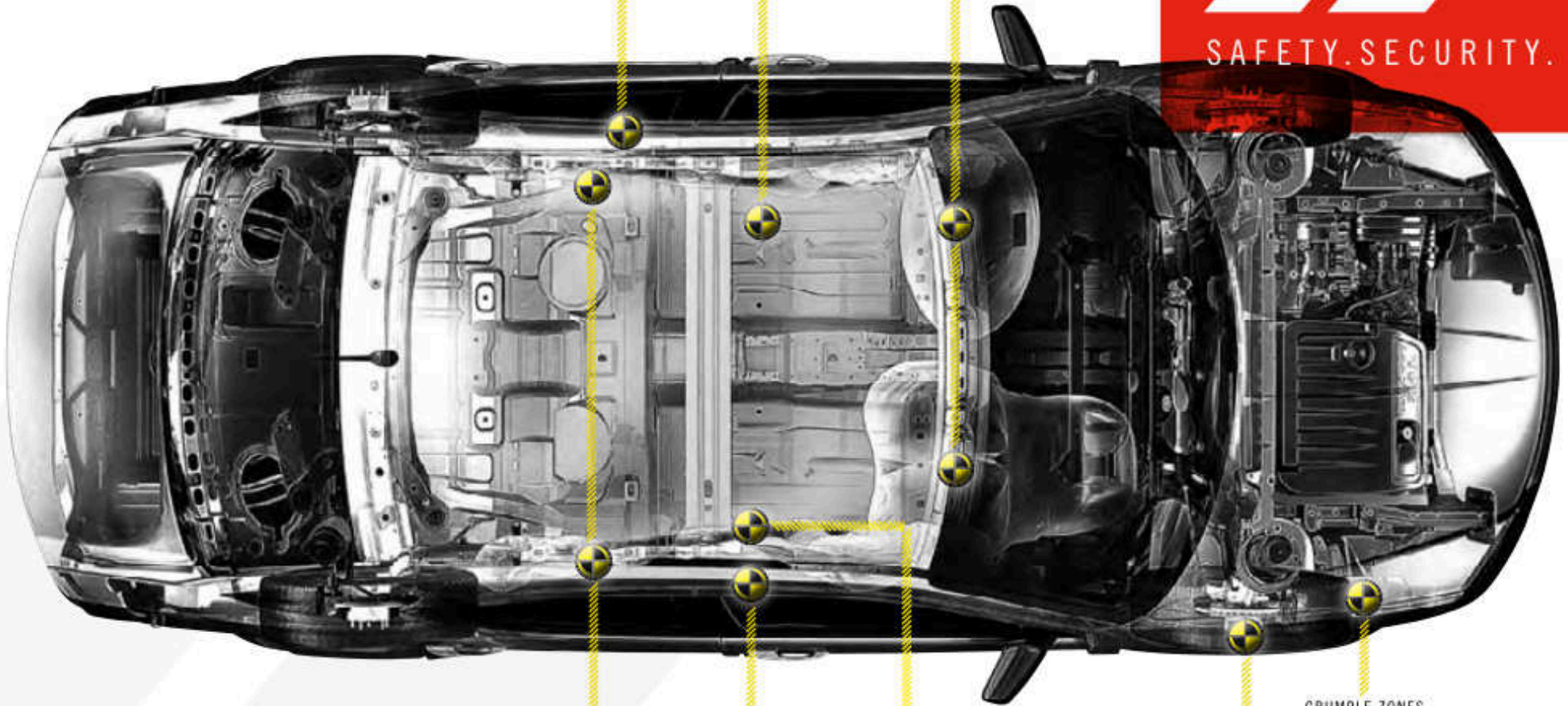
AT DODGE, WE MAKE SAFETY AND SECURITY OUR TOP PRIORITY, WHICH IS WHY EVERY SAFETY FEATURE AVAILABLE ON AVENGER AUTOMATICALLY COMES STANDARD. **ELECTRONIC STABILITY CONTROL (ESC)**,<sup>(18)</sup> IN ADVERSE CONDITIONS, THE STANDARD ESC AND BRAKE ASSIST WORK WITH AN ADVANCED ALL-SPEED TRACTION CONTROL SYSTEM TO HELP THE DRIVER MAINTAIN VEHICLE DIRECTIONAL STABILITY AND LIMIT OVERSTEERING OR UNDERSTEERING. BRAKE ASSIST DETECTS CONDITIONS WHEN MAXIMUM FORCE IS NEEDED FOR OPTIMUM STOPPING POWER. **ANTILOCK BRAKE SYSTEM (ABS)**, STANDARD FOUR-WHEEL ANTILOCK DISC BRAKES AFFORD PREMIUM STOPPING POWER FROM STATE-OF-THE-ART ELECTRONICS THAT PROVIDE FASTER SYSTEM RESPONSE. ABS SENSES AND PREVENTS WHEEL LOCKUP, OFFERING IMPROVED STEERING CONTROL UNDER EXTREME BRAKING AND/OR SLIPPERY CONDITIONS. **AIR BAGS**,<sup>(19)</sup> ALL AVENGER MODELS FEATURE STANDARD ADVANCED MULTISTAGE DRIVER AND FRONT-PASSENGER AIR BAGS, SUPPLEMENTAL SIDE-CURTAIN AIR BAGS, AND SUPPLEMENTAL DRIVER AND FRONT-PASSENGER SEAT SIDE-MOUNTED AIR BAGS. **ACTIVE FRONT HEAD RESTRAINTS**,<sup>(19)</sup> HEAD RESTRAINTS AUTOMATICALLY MOVE FORWARD AND UPWARD IN THE EVENT OF A REAR-END COLLISION TO DECREASE THE SPACE BETWEEN THE HEAD RESTRAINT AND THE OCCUPANT'S HEAD, HELPING TO REDUCE THE CHANCE OF INJURY. **TIRE PRESSURE MONITORING SYSTEM**, AVENGER SXT AND R/T MODELS COME EQUIPPED WITH THE PREMIUM SYSTEM THAT DISPLAYS INDIVIDUAL TIRE PRESSURES. AVENGER SE FEATURES A WARNING LIGHT IN THE INSTRUMENT CLUSTER THAT ALERTS THE DRIVER TO TIRES WITH HIGH OR LOW PRESSURE.

SUPPLEMENTAL FRONT-SEAT SIDE-MOUNTED AIR BAG<sup>(9)</sup>

HIGH-STRENGTH STEEL BODY

DRIVER AND FRONT-PASSENGER AIR BAGS<sup>(9)</sup>

SAFETY. SECURITY.



ACTIVE FRONT HEAD RESTRAINTS<sup>(10)</sup>

CRUMPLE ZONES

FOUR-WHEEL ANTILOCK DISC BRAKES

SUPPLEMENTAL FRONT-SEAT SIDE-MOUNTED AIR BAG<sup>(9)</sup>

SUPPLEMENTAL SIDE-CURTAIN FRONT AND REAR AIR BAGS<sup>(11)</sup>



## AUTHENTIC DODGE ACCESSORIES

AVENGER SE SHOWN IN BLUE STREAK PEARL WITH 17-INCH CHROME WHEELS, REAR SPOILER, AND CHROME EXHAUST TIP.

**WITH YOU EVERY MILE.** MOPAR® IS WITH YOU THE MOMENT YOU GET YOUR NEW KEYS AND FOR EVERY MILE THEREAFTER. IT'S A BRAND THAT HELPS MAINTAIN AND MAKE YOUR RIDE YOUR OWN WITH PARTS AND ACCESSORIES OF EVERY KIND — ALL ORIGINAL EQUIPMENT DESIGNED BY THE SAME ENGINEERS OF YOUR VEHICLE — SPECIFICALLY FOR YOUR MODEL. IT'S NOT GUESSWORK — IT'S ABOUT GETTING-IT-RIGHT-THE-FIRST-TIME SATISFACTION WITH SEAMLESS FIT AND FINISH, EXACT COLOR MATCHES, AND HIGH-QUALITY MATERIALS THAT HAVE BEEN THOROUGHLY TESTED FOR THE LONG HAUL. MOPAR ALSO ASSURES YOU WITH EXPERT TECHNICIANS WHO KNOW YOUR MAKE AND MODEL BEST, VEHICLE PROTECTION PLANS, EXPRESS LANE SERVICE, AND AN ACTIVE ONLINE OWNER CONNECT WEB SITE (REGISTER AT OWNERS.DODGE.COM). WELCOME TO MOPAR NATION. SEE YOUR DODGE DEALER FOR THE LATEST PARTS AND ACCESSORIES AVAILABLE. LEARN MORE ABOUT THE WORLD OF MOPAR AND ALL IT HAS TO OFFER AT MOPAR.COM

PROPERLY SECURE ALL CARGO.





AVENGER R/T SHOWN IN REDLINE 2 COAT PEARL.

## DODGE.COM/LIFE

CHECK OUT AN EXTENSIVE LINE OF GIFTS AND GEAR FOR THE DODGE ENTHUSIAST. FROM AUTHENTIC APPAREL TO DIE-CAST REPLICAS FOR THE COLLECTOR, AS WELL AS ELECTRONICS AND OFFICE SUPPLIES, ALL LIFESTYLE ITEMS ARE AS BOLD AS YOUR DODGE VEHICLE. REFER TO [DODGE.COM/LIFE](http://DODGE.COM/LIFE) FOR OUR FULL PRODUCT LINEUP.



## GO MOBILE

TAKE A MULTIMEDIA TOUR OF YOUR VEHICLE ON YOUR MOBILE DEVICE. VISIT THE CHRYSLER GROUP LLC PAGE IN ITUNES® FROM YOUR SMARTPHONE OR IPAD® TO DOWNLOAD THE MOST UP-TO-DATE VEHICLE APPS. LOG ON TO THE [DODGE.COM](http://DODGE.COM) MOBILE SITE FOR AN AT-A-GLANCE REVIEW OF WHAT YOU NEED TO KNOW ABOUT YOUR DODGE VEHICLE. EXPERIENCE VISUAL AND INTERACTIVE DEMONSTRATIONS WHILE GAINING ACCESS TO PRODUCT INFORMATION AT YOUR FINGERTIPS, WHEREVER YOU GO.



## AVENGER SE

### POWERTRAIN

- 2.4L 173-horsepower DOHC 16V I-4, 4-speed automatic transmission
- 3.6L 283-horsepower DOHC 24V Pentastar® V6, 6-speed automatic transmission

### SELECT STANDARD EQUIPMENT

- Bright split crosshair grille
- 17-inch wheel covers
- Touring suspension
- LED taillamps
- Body-color door handles
- Air conditioning
- Uconnect® 130 AM/FM/CD/MP3 radio with 4 speakers
- Premium cloth seats
- Driver's seat-height adjuster and lumbar adjust
- 60/40 split-folding rear seat
- Steering wheel-mounted cruise and audio controls
- Power windows, locks, and mirrors

- Remote keyless entry and security alarm
- Tilt/telescoping steering column
- Floor console with fore/aft slide armrest with dual storage compartments
- Ambient LED interior lighting
- 6 air bags<sup>(2)</sup> including advanced multistage front, side-curtain, and front-seat side-mounted air bags
- 4-wheel antilock disc brakes with traction control
- Electronic Stability Control (ESC)<sup>(3)</sup>
- Active front head restraints<sup>(2)(3)</sup>
- Child Seat Anchor System (LATCH)
- Tire pressure monitoring warning lamp

### SELECT OPTIONAL EQUIPMENT

- SiriusXM Satellite Radio<sup>(4)</sup> with 1-year subscription
- Uconnect Hands-Free Group
- 18-inch aluminum wheels (SE V6)

- 18-inch chrome-clad aluminum wheels (SE I-4)
- SE V6 Package
- Engine block heater



## AVENGER SXT

### POWERTRAIN

- 2.4L 173-horsepower DOHC 16V I-4, 6-speed automatic transmission
- 3.6L 283-horsepower DOHC 24V Pentastar V6, 6-speed automatic transmission

### SELECT STANDARD EQUIPMENT OVER SE

- 17-inch aluminum wheels
- Projector fog lamps
- Automatic headlamps
- Body-color heated foldaway exterior mirrors
- Power 8-way driver's seat
- Leather-wrapped steering wheel and shift knob
- SiriusXM Satellite Radio<sup>(4)</sup> with 1-year subscription
- Front and rear aimable LED lamps
- Display screen on instrument cluster
- Overhead console
- Sun visors with illuminated vanity mirrors
- Uconnect 130 AM/FM/CD/MP3 radio with 6 speakers
- Automatic Temperature Control (ATC)
- Electronic Vehicle Information Center (EVIC)/trip computer (tire pressure, compass, and temperature)
- Dual rear exhaust with bright tips (V6)

### SELECT OPTIONAL EQUIPMENT

- Leather-trimmed seats with heated front seats
- Blacktop Package
- Rallye Appearance Group
- Uconnect Hands-Free Group
- 18-inch aluminum wheels
- 18-inch chrome-clad aluminum wheels
- Uconnect 430 with 6.5-inch touch screen with CD/DVD/MP3 radio

- Uconnect 730N with 6.5-inch touch screen, premium navigation, and CD/DVD/MP3 radio
- Power sunroof
- Sun/Sound Group
- Cold Weather Group
- Engine block heater



## AVENGER R/T

### POWERTRAIN

- 3.6L 283-horsepower DOHC 24V Pentastar V6, 6-speed automatic transmission

### SELECT STANDARD EQUIPMENT OVER SXT

- 18-inch polished aluminum wheels with Satin Carbon pockets
- Sport-tuned suspension
- Performance power steering
- Body-color grille
- Black bezel headlamps
- Dodge hood-to-fender stripes
- Body-color rear spoiler
- Dual rear exhaust with bright tips
- Unique performance seats with high-leather bolsters and Red accent stitching with Black cloth or Z-stripe inserts
- Heated front seats with R/T embroidery
- Perforated leather-wrapped steering wheel with Red stitching
- Performance pedals
- Red LED ambient lighting
- Unique instrument panel with center tachometer
- Uconnect Voice Command<sup>(5)</sup> with Bluetooth<sup>(6)</sup>
- Uconnect 430 with 6.5-inch touch screen with CD/DVD/MP3 radio
- 6 Boston Acoustics<sup>(7)</sup> speakers with 276-watt amplifier
- Bluetooth streaming audio
- Auto-dimming rearview mirror with microphone
- Power express 1-touch up and down front windows
- Premium overhead console with Universal Garage Door Opener
- Remote start

### SELECT OPTIONAL EQUIPMENT

- Uconnect 730N with 6.5-inch touch screen, premium navigation, and CD/DVD/MP3 radio
- Power sunroof

- Sun/Sound Group
- Stripe delete
- Engine block heater

## PACKAGES

**UCONNECT HANDS-FREE GROUP** — Uconnect Voice Command<sup>(5)</sup> auto-dimming rearview mirror with microphone, remote USB port, and Bluetooth streaming audio.

**SE V6** — 3.6-liter 283-horsepower Pentastar V6 with 6-speed automatic with AutoStick, rear body-color spoiler, and 17-inch aluminum wheels.

**COLD WEATHER GROUP** — Heated front seats and remote start.

**RALLYE APPEARANCE GROUP** — 18-inch aluminum wheels, body-color grille, rear body-color spoiler, and dark-tinted headlamps.

**BLACKTOP PACKAGE** — 18-inch Gloss Black aluminum wheels, Gloss Black grille, rear body-color spoiler, and dark-tinted headlamps.

**SUN/SOUND GROUP** — Power express open/close sunroof and Uconnect 730N with 6.5-inch touch screen, navigation, 40GB hard drive with 20GB available, Gracenote MusicID<sup>(8)</sup> and audio jack.



A



B



C

## AVENGER INTERIORS

A Premium Black Momentum/Wallace II cloth seating (standard on SE and SXT)

B Premium Light Frost Beige Momentum/Wallace II cloth seating (standard on SE and SXT)

C Black Royale leather-trimmed seating (optional on SXT)

D Light Frost Beige Royale leather-trimmed seating (optional on SXT)

E Premium Black and Red Momentum/Wallace II cloth seating (optional on SXT with Rallye Appearance Group)

F Performance Z-stripe cloth seating with Royale leather bolsters and Red stitching (standard on R/T)

G Premium Black performance cloth seating with Royale leather bolsters and Red stitching (optional on R/T)



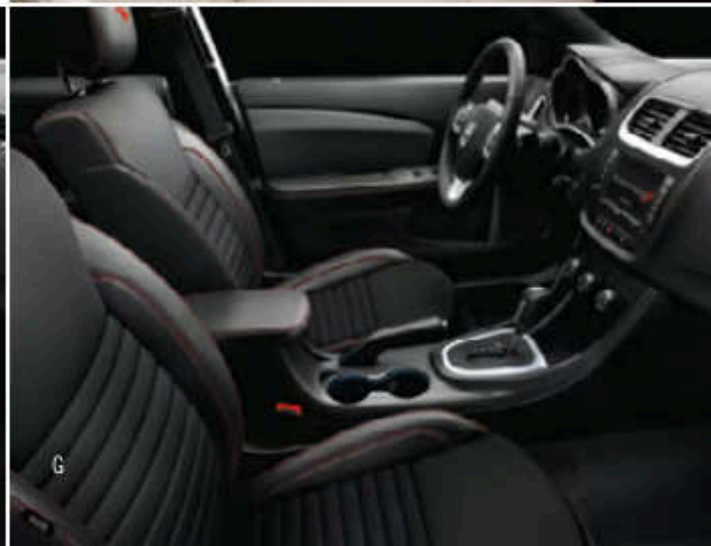
D



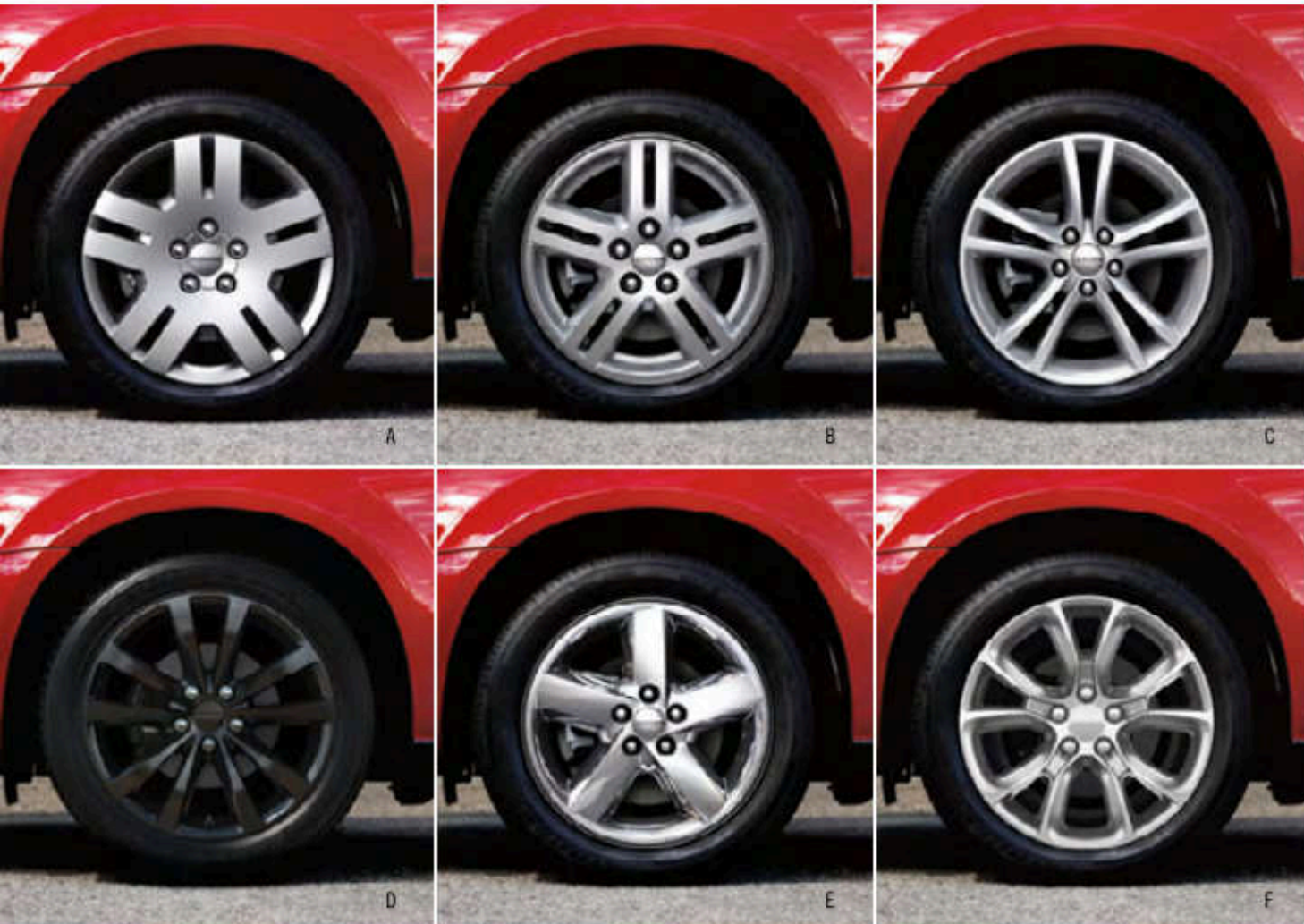
E



F



G



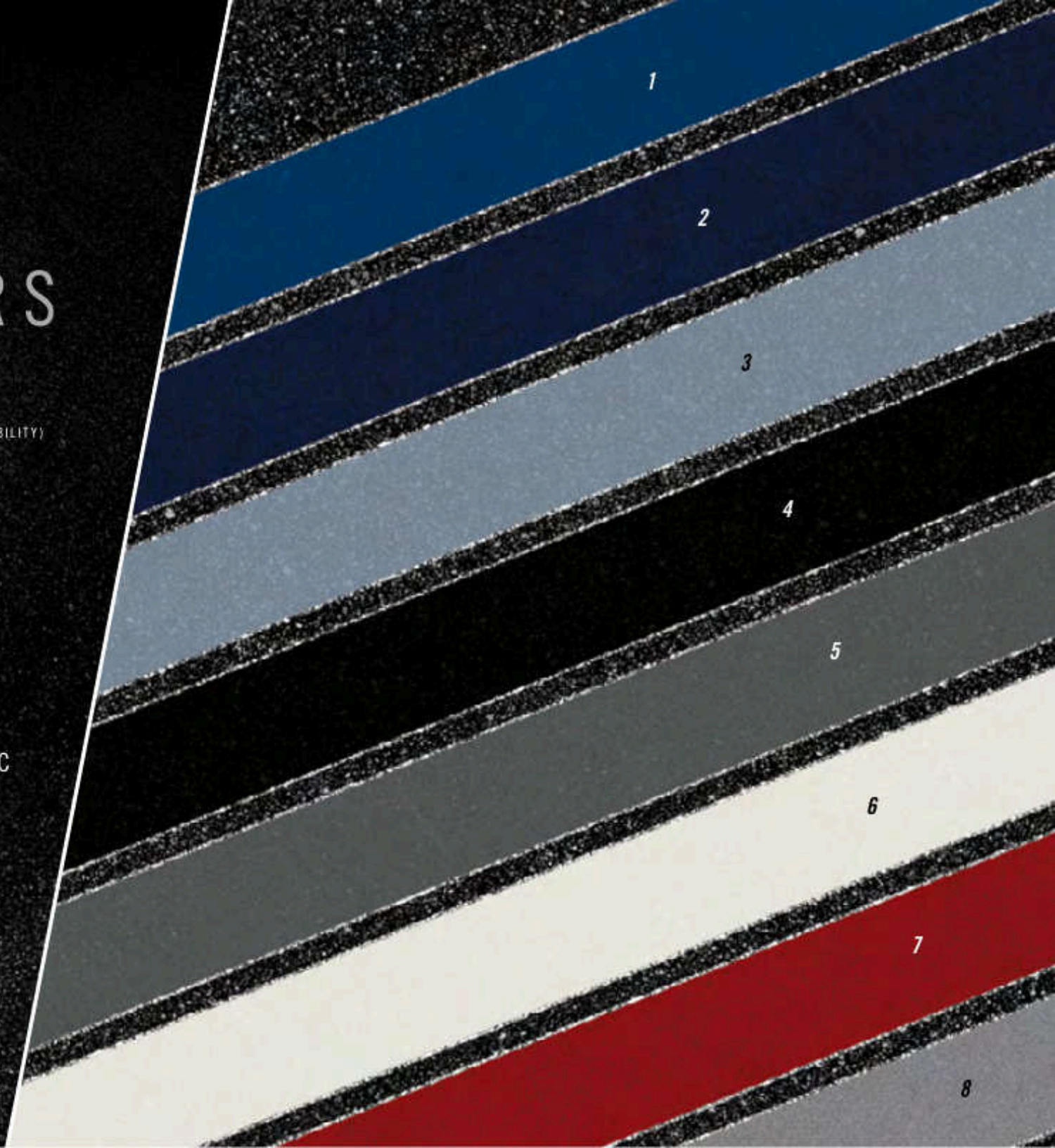
## AVENGER WHEELS

- A 17-inch wheel covers  
(standard on SE 4-cyl)
- B 17-inch Reveal cast aluminum  
(standard on SE V6 and SXT)
- C 18-inch aluminum (optional on  
SE V6 and included with the Rallye  
Appearance Group on SXT)
- D 18-inch Gloss Black aluminum  
(included with Blacktop Package  
on SXT) Late availability
- E 18-inch chrome-clad aluminum  
(optional on SE 4-cyl and SXT)
- F 18-inch Rallye polished aluminum  
with Satin Carbon pockets  
(standard on R/T)

# AVENGER EXTERIORS

- 1 BLUE STREAK PEARL
- 2 TRUE BLUE PEARL (LATE AVAILABILITY)
- 3 CRYSTAL BLUE PEARL
- 4 BLACK
- 5 TUNGSTEN METALLIC
- 6 BRIGHT WHITE
- 7 REDLINE 2 COAT PEARL
- 8 BILLET SILVER METALLIC

Not all models available in all colors.  
See your Dodge dealer for details.





AVENGER SXT SHOWN IN BLACK.



AVENGER

DODGE.COM/AVENGER



CHALLENGER



CHARGER



DART



AVENGER



GRAND CARAVAN



DURANGO



JOURNEY



DODGE.COM // 800-4ADODGE  
DODGE IS A REGISTERED TRADEMARK OF CHRYSLER GROUP LLC.



Join our community on Facebook, follow us on Twitter, and check us out on YouTube.

[1] Based on latest available competitive information and Ward's Lower Mid-Size Vehicle segment, excluding hybrids. [2] Based on EPA estimated 20 city/31 hwy mpg with 2.4L engine and 6-speed transmission. [3] Sirius services require subscriptions, sold separately after 12-month trial included with vehicle purchase. **If you decide to continue your service at the end of your trial subscription, the plan you choose will automatically renew and bill at then-current rates until you call SiriusXM at 1-866-635-2349 to cancel. See SiriusXM Customer Agreement for complete terms at siriusxm.com.** All fees and programming subject to change. Sirius satellite service available only to those at least 18 and older in the 48 contiguous U.S., D.C., and P.R. (with coverage limitations). Our Internet radio service is available throughout our satellite service area and in AK and HI. Traffic information not available in all markets. See [siriusxm.com/traffic](http://siriusxm.com/traffic) for details. © 2012 Sirius XM Radio Inc. Sirius, XM and all related marks and logos are trademarks of Sirius XM Radio Inc. [4] Requires Uconnect Phone. [5] Based on latest available competitive information and 2011 *Automotive News* Lower Mid-Size Vehicle segment. 283 horsepower when equipped with available V6 engine. [6] Based on latest available competitive information and 2011 *Automotive News* Lower Mid-Size Vehicle segment. [7] Transferable. See dealer for complete details and a copy of the 5-Year/100,000-Mile Powertrain Limited Warranty. [8] No system, no matter how sophisticated, can repeal the laws of physics or overcome careless driving actions. Performance is limited by available traction, which snow, ice, and other conditions can affect. When the ESC warning lamp flashes, the driver needs to use less throttle and adapt speed and driving behavior to prevailing road conditions. Always drive carefully, consistent with conditions. Always wear your seat belt. [9] The Advanced Front Air Bags in this vehicle are certified to the new U.S. federal regulations for advanced air bags. Children 12 years old and younger should always ride buckled up in a rear seat. Infants in rear-facing child restraints should never ride in the front seat of a vehicle with a passenger front air bag. All occupants should always wear their lap and shoulder belts properly. [10] Always sit properly with the head restraint properly adjusted. Never place anything in front of the head restraint. **About this brochure:** Since the time of production, some of the information you'll find in this brochure may have been updated. Ask your dealer for details. Some of the equipment shown or described throughout this brochure is available at extra cost. Specifications, descriptions, illustrative materials, and all competitive comparisons contained herein are as accurate as known at the time this brochure was approved for publication. Chrysler Group LLC reserves the right to discontinue models at any time or change specifications without notice and without incurring obligation. Options may be required in combination with other options. For the price of the model with the equipment you desire, or verification of specifications contained here, see your Dodge dealer. Sirius, XM and all related marks and logos are trademarks of Sirius XM Radio Inc. Bluetooth is a registered trademark of Bluetooth SIG, Inc. iPod, iPad, and iTunes are registered trademarks of Apple Inc. All rights reserved. Facebook and logo are trademarks of Facebook, Inc. The Twitter logo is a service mark of Twitter, Inc. The YouTube logo is a trademark of Google Inc. Boston Acoustics and the Boston Acoustics logo are registered trademarks of Boston Acoustics, Inc. All rights reserved. Gracenote MusicID is a registered trademark of Gracenote, Inc. Chrysler, Dodge, Avenger, Challenger, Charger, Dart, Durango, Grand Caravan, Journey, Mopar, Pentastar, R/T, Blacktop, SXT, and Uconnect are registered trademarks of Chrysler Group LLC. © 2012 Chrysler Group LLC. All rights reserved.