



2011 DODGE CHALLENGER
800-4ADODGE // DODGE.COM

DODGE



CHALLENGER



IT'S NOT BRAGGING IF YOU BRING IT. AND THIS IS "IT." The Dodge Challenger has been recognized by Polk for having the highest Model Loyalty in the Sports Car Segment* for the 2010 model year. Challenger takes a history of know-how and puts it into practice. The end result? Laurels that are torn apart during an adamant refusal to rest on them. This cutting-edge piece of modern engineering boasts the DNA of its legendary forefather: flawlessly sculpted with a lean, low profile and menacing dual round headlamps, unmistakable performance hood, and throwback honeycomb grille. But it goes one further. It puts hardcore power on the road, thanks to handling dynamics that were decades out of reach back in the day. The 2011 Dodge Challenger ups the ante with leading-edge technology and modern must-have comforts, such as available Uconnect[®] media systems, heated bucket seats, and proximity entry with Keyless Enter-N-Go with push-button start. Hit dodge.com/challenger for the full story of the latest legend.

*According to Polk statistics for the Sports Car Category in the 2010 model year, Dodge Challenger ranked highest by having the greatest percentage of households return to purchase or lease another Dodge Challenger vehicle.



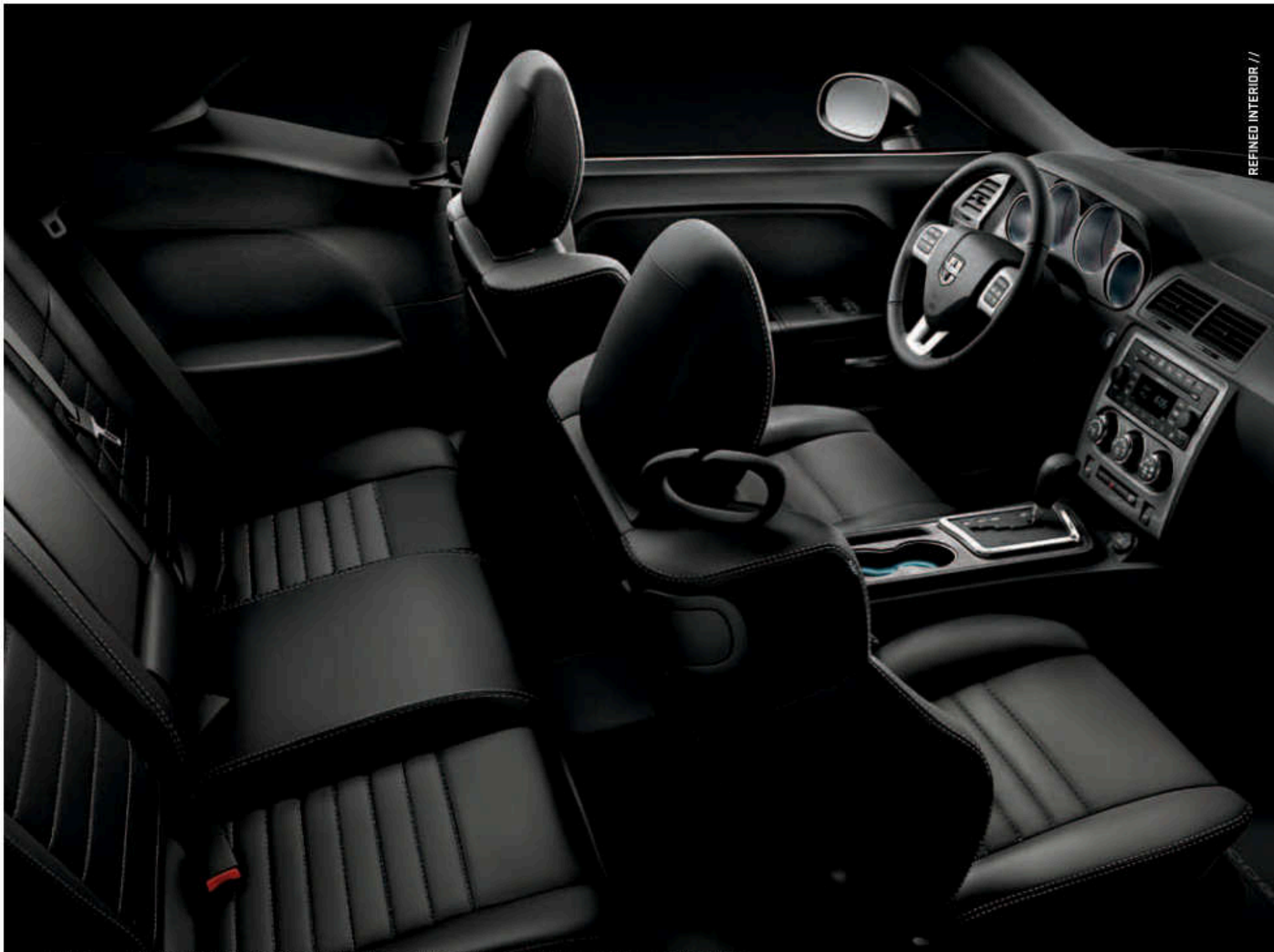
392

SRTB® 392 INAUGURAL EDITION. Some things are more desirable because they brilliantly balance form and function. Others are sought after because their quantities are finite. The limited Challenger SRTB 392 Inaugural Edition is coveted for both reasons. The first 1,100 2011 Dodge Challengers to roll off the assembly line will be numbered and branded with a unique exterior and interior.

EXTERIOR. Available in a choice of Bright White with dual Viper Blue tip-to-tail racing stripes or the reverse: Deep Water Blue Pearl with dual Stone White tip-to-tail racing stripes. A unique grille surround features body-color accent paint while a bold "392 HEMI®" badge graces the fender. Other exclusive features include: 20-inch polished aluminum wheels with Black pockets, Mopar® quad-style exhaust tips, and special 392 HEMI engine valve covers.

INTERIOR. All 392 Inaugural Editions are highlighted by Nappa Pearl leather seating surfaces with a double Blue vertical stripe. All seats are piped and stitched in Blue and feature the "392" logo for an even more dramatic look. Other unique features include: Pearl inserts on the door-trim panels; Silver Metal Brush grab handles; Silver Metal Brush center stack and console bezels; Blue accent stitching on armrest, steering wheel, ATX knob or MTX boot; serialized dash plaque; quarter-glass decal with Mopar logo; and key fob with "392" logo.





Challenger R/T Plus with Dark Slate Gray leather seating surfaces and available 5-speed AutoStick.

Challenger's aura might be throwback but the interior is all about 21st-century comfort and style. Depending on model, Challenger offers premium cloth or new Nappa leather-surface bucket seats, leather-wrapped steering wheel, available heated seats, and a six-way power driver's seat. The rear delivers serious space with a standard fold-down armrest and cup holders, and belted seating for three passengers, making it the only vehicle in its class^[1] with five-passenger seating capability. Challenger's "Four Bomb" gauges and available race-inspired pedals nod to the original, and the interior stays organized with the help of a sliding center console and door map pockets. The 60/40 split-folding rear seats with trunk access easily accommodate larger items and provide entry to best-in-class^[1] trunk storage. *A note about this brochure:

All disclaimers and disclosures can be found on page 22.





STAY CONNECTED. Outfit your Challenger with Uconnect[®] to help stay in touch with the people, music, and devices that matter most. It acts as the hub for your most important media – cell phone, Internet, satellite radio, navigation system, and personal devices, such as an iPod[®] or smartphone. The Uconnect user-friendly systems are designed to make your life easier, wherever you roam.



PHONE. Talking on the phone while driving has never been easier – or more responsible. Uconnect Phone is the in-vehicle, voice-activated communication system that allows you to pair up to seven Bluetooth[®] compatible phones and then talk virtually hands-free. This system is also clever enough to synchronize with your phone's address book⁽²⁾ – up to 1,000 entries – every time you get into your vehicle.



WEB. Put the power of high-speed Internet in your vehicle with Uconnect Web⁽³⁾. Effortlessly connect any WiFi-enabled device to the Internet at 3G broadband speeds, making your vehicle a Mobile Hotspot within a 150-ft range. Passengers can use multiple devices at the same time. There's no need for cell cards or software with this unique Authentic Accessory by Mopar[®] – connectivity is all done wirelessly. Subscription required. Sold separately.



VOICE COMMAND. It simplifies driving by letting you keep your eyes on the road and your hands on the wheel. Vocally select FM radio stations, SIRIUS[®] Satellite Radio⁽⁴⁾ channels, make and receive calls, select navigation destinations, and record voice memos. This smart system technology can also be adapted to better recognize your voice and can understand commands in English, French, and Spanish.



ENTERTAINMENT. Manage all of your media. You'll have six ways to access audio, including SIRIUS Satellite Radio⁽⁴⁾ (your first year of service is included), a 30GB hard drive, iPod Control with Audio Jack and CD/DVD, and Bluetooth Streaming Audio.



NAVIGATION. Provides turn-by-turn guidance by voice command and visual display. It can also locate nearby restaurants, shopping, hospitals, or points of local interest. Add SIRIUS Traffic^{TM(4)} for real-time traffic updates, including accident alerts, road closings, and traffic flow. Your first year of SIRIUS Traffic⁽⁴⁾ service is included.

UCONNECT MEDIA CENTER RADIOS

AVAILABLE	730N	430N	430	130
Challenger SRT8 [®] 392	0	0	S	
Challenger R/T Classic	0	0	0	S
Challenger R/T Plus	0	0	0	S
Challenger R/T	0	0	0	S
Challenger Rallye	0	0	0	S
Challenger SE				S
SELECTED FEATURES				
LCD Display	6.5-inch Touch	6.5-inch Touch	6.5-inch Touch	
Optical Drive	CD/DVD/MP3	CD/DVD/MP3	CD/DVD/MP3	CD/MP3
Navigation	S	Garmin [®]		
SIRIUS Travel Link ^{TM(4)}	S	S		
SIRIUS Traffic ⁽⁴⁾	S			
SIRIUS Satellite Radio ⁽⁴⁾	S	S	S	0
Storage	30GB	30GB	30GB	
Audio Jack	S	S	S	S
Hands-Free Voice Command of Phone, Radio, Players	S	0	0	0
Bluetooth Streaming Audio	S	S	S	0
Remote USB Port for Digital Media Storage/Players (iPod)	S	S	S	0

S = Standard 0 = Optional



SIRIUS TRAVEL LINK⁽⁴⁾ brings a wealth of useful information to your fingertips including: national weather information for current and forecasted weather, fuel prices to check local gas prices, sports scores for in-game and final scores, as well as weekly schedules and local movie theater listings.



PERFORMANCE

ALL-NEW 392-CUBIC-INCH SRT8[®] HEMI[®] V8. It pushes back and powers ahead with an impressive 470 horsepower and 470 lb-ft of torque. This power is linked to a high-performance suspension with rear stabilizer bar, performance-tuned steering, antilock 4-wheel disc performance brakes, 245/45ZR 20-inch performance tires, and a choice of 5-speed AutoStick or TREMEC[®] 6-speed short-throw manual transmissions. In short, this gets it done.



ALL-NEW 3.6L DOHC VARIABLE VALVE TIMING (VVT) PENTASTAR® V6 – NAMED ONE OF WARD'S 10 BEST ENGINES FOR 2011. From a state-of-the-art high-pressure die-cast aluminum block to full independent dual-cam phasing, sequential port fuel injection, and high-flow intake and exhaust ports, the all-new 3.6-liter Pentastar engine applies some of the most advanced automotive engine technology. The result is an exceptional blend of high torque; fuel efficiency; low emissions; and first-rate noise, vibration, and harshness control. The only thing better than numbers like 305 horsepower and 268 lb-ft of torque with an EPA fuel economy of 18 city/27 highway mpg is the engine's durability enhancing features like an advanced oil-filter system that helps to eliminate oil spills and to contain an incinerable filter element for more efficient disposal.

5.7L HEMI V8. Fuel Saver Technology and VVT give this engine stunning power and efficiency credentials. The standard 6-speed manual transmission boasts 379 horsepower and a whopping 410 lb-ft of torque, while the available 5-speed AutoStick delivers 372 horsepower and 400 lb-ft of torque. When equipped with Fuel Saver Technology, the computer uses sophisticated algorithms to seamlessly transition from eight cylinders to four cylinders when full power is not required, providing increased fuel efficiency.

BRAKES. SRT8 392 models come equipped with four-wheel antilock brakes that are outfitted with vented rotors and Brembo® performance aluminum four-piston calipers for even clamping. Air ducts integrated into the front fascia help to reduce brake temperatures under extreme driving circumstances. Brake knock-back mitigation uses the advanced technologies of lateral g-force sensors to prime the braking system, eliminating brake pedal fade and enhancing stopping distances during faster-paced driving. The twin piston, four-wheel disc antilock brake system (ABS) is performance tuned to provide improved ABS response, maximum stopping power, and reduced pedal travel. The standard four-wheel disc brakes bring substantial braking power with antilock and Brake Assist. The results of all this engineering are reduced resistance and enhanced long-term braking performance.

SUSPENSIONS. 2011 Challenger features reengineered suspensions that boast revised geometry and retuned shock and bushing rates for improved handling and accident avoidance maneuvers. The independent five-link rear suspension is tuned to provide a comfortable ride and superior handling on rough roads, thanks to lower unsprung mass, which helps maintain better tire contact with the ground and reduces rear road noise. SRT8 392 models feature a high-performance suspension with Bilstein® monotube tuned dampers. The specially tailored spring rates, suspension bushings, and sway bars help Challenger put the muscle to the pavement.

GREEN WITH ENVY. When it comes to the Challenger R/T Classic, it's difficult not to state the obvious. In this case, we'll let the paint codes do the talking (and Dodge's paint codes have been known to do just that). Green With Envy is the latest throwback color to be reincarnated from the Chrysler paint code archives and is only available on this trim level and SRT8[®] 392. R/T Classic also sports a scripted Challenger fender badge that nods to the original. Dual classic bodyside stripes, 20-inch aluminum wheels and new High Intensity Discharge (HID) headlamps also make this Challenger stand out and be noticed. **STRIPE OPTIONS.** In the golden age of muscle, the only thing better than owning a standout muscle car was owning one unlike any other. In that spirit, Challenger offers several stripe options, reminiscent of those from the 1970s, to choose from. Check out the details below.

CHALLENGER COLOR/STRIPE AVAILABILITY	CHALLENGER RALLYE GROUP	CHALLENGER R/T / R/T PLUS	CHALLENGER R/T CLASSIC	CHALLENGER SRT8 392
REDLINE 3 COAT PEARL	BG	B	B, W	T, X, D
TOXIC ORANGE PEARL	BG	B	B, W	T, X, D
GREEN WITH ENVY*			B, W	T, X
BLACKBERRY PEARL	WR	B	B, W	
DEEP WATER BLUE PEARL**				W†
TUNGSTEN METALLIC	BG	B, R	B, W, R	
BILLET SILVER METALLIC	BR	B	B	X, D
BRILLIANT BLACK CRYSTAL PEARL	GR	S, R	B, W, R	T, X, D
BRIGHT WHITE	BR	B, R	B, R	L†

- RALLYE GROUP DUAL CENTER STRIPE COLOR – BR-BLACK/RED – BG-BLACK/GRAY – GR-GRAY/RED – WR-STONE WHITE/RED
- R/T HOOD-TO-FENDER STRIPE COLORS – B-BLACK – S-MEDIUM SILVER METALLIC – R-FLAME RED
- R/T CLASSIC STRIPE COLORS – B-BLACK – W-STONE WHITE – R-RED
- CHALLENGER SRT8 392 HEMI[®] TIP-TO-TAIL STRIPE COLOR – L- VIPER BLUE – W -STONE WHITE – T- SILVER – X- BLACK – D- MEDIUM GRAY METALLIC

*Late availability. **Limited availability. †392 Inaugural Edition.



R/T CLASSIC DUAL BODYSIDE STRIPE



BUZZ COLORS AND STRIPE PACKAGES //

R/T CLASSIC DUAL BODYSIDE STRIPE



CHALLENGER RALLYE GROUP
DUAL CENTER STRIPE

R/T HOOD-TO-FENDER STRIPE

Challenger Rallye builds off the Challenger blueprint while adding its own spin on the details. Standard features include leather seating surfaces, Uconnect[®] Media Center 130 radio with audio jack, one-year subscription to SIRIUS[®] Satellite Radio,⁽⁴⁾ Uconnect hands-free communication system, and six Boston Acoustics[®] speakers with a 276-watt digital amplifier. The available Rallye Group adds dual center stripes, body-color rear spoiler, and unique 18-inch aluminum wheels. Optional equipment includes: Super Sport Group which adds 20-inch chrome-clad wheels and 245/45ZR20 BSW performance tires; performance-tuned steering, suspension, and brakes; and a 3.06 rear axle ratio. Additional available option groups are Electronic Convenience Group and Sound Group II.



Challenger Rallye in Blackberry Pearl.

MOPAR ACCESSORIES //



AUTHENTIC DODGE ACCESSORIES



When you enhance your Challenger with Authentic Dodge Accessories by Mopar,[®] you'll all but guarantee your individuality at every stoplight. **MOPAR T/A HOOD.** This classic hood with integrated scoop replaces the production hood and amplifies your Challenger's aggressive stance. Hood scoop is matte Black and paintable. **BLACK CHROME GRILLE SURROUND.** This custom surround enhances your vehicle's aesthetic appeal and gives Challenger's front end an even more unique look. **20-INCH DAYTONA WHEEL.** Rev up the custom good looks with this stylish wheel. The corrosion-resistant wheel features a five-spoke design with gloss Black spokes and a machined Silver lip. **BELTLINE DECAL KIT.** For long-lasting appeal, the Beltline Decal Kit is constructed of fade- and weather-resistant vinyl that shows off a heritage-inspired design. **REAR GO WING SPOILER.** Not only does it provide a little aerodynamic incentive that's free from vibration, it yields an uncompromising presence. Available in matte Black, which can be painted to match body color. **SEQUENTIAL TURNING LIGHTS.** Convert your Challenger's taillamps into Sequential Turn Signals. Easy to install without wire cutting or splicing. **DUAL CHROME EXHAUST TIPS.** Enhance the appearance of your vehicle's existing exhaust system with bold, easily installed exhaust tips. For the full range of accessories, visit mopar.com



SAFETY. DESIGN.

RAIN BRAKE SUPPORT. During rainy conditions, the Electronic Stability Control (ESC)^[5] pumps brakes to keep brake rotors dry, allowing optimal operation. **AIR BAGS.**^[4] Advanced multistage front air bags,^[4] supplemental front-seat-mounted side air bags,^[4] driver knee blocker air bag,^[4] and supplemental side-curtain air bags^[4] for front and rear outboard occupants are all standard. **TIRE PRESSURE MONITORING.** Standard pressure sensors in the tire valves allow for automatic detection and notification when tire pressure is low. **ACTIVE HEAD RESTRAINTS.**^[7] In the event of a rear collision, these standard restraints help to reduce the chance of injury for front occupants. **ELECTRONIC STABILITY CONTROL (ESC).**^[3] A standard vehicle-wide network of safety sensors provides instant aid when the sensors detect that you're veering off your intended path. This robust system includes antilock brake system (ABS) with Brake Assist and all-speed traction control. **IMPROVED CRUSH ZONES.** Designed to divert and dissipate impact energy away from the passenger compartment, helping minimize injuries in the event of an accident. **SENTRY KEY® ENGINE IMMOBILIZER.** The vehicle is prevented from starting unless the key fob containing a unique embedded code is present. **HILL START ASSIST.** Automatically applies the brakes momentarily to help prevent rollback on hills and inclines.



SPECIFICATIONS



CHALLENGER SE INCLUDES:

STANDARD FEATURES: 3.6 liter Pentastar® VVT V6 engine, 160-amp alternator, 4-wheel disc antilock brakes, heavy-duty engine cooling, electric-hydraulic power rack-and-pinion steering, sport suspension, folding body-color exterior mirrors, P235/55R18 BSW All-Season performance tires, 18-inch aluminum wheels, compact spare. **OPTIONAL FEATURES:** Engine block heater.

CHALLENGER RALLYE INCLUDES:

ADDITIONAL STANDARD FEATURES: Automatic headlamps, fog lamps. **OPTIONAL FEATURES:** Engine block heater, power sunroof, 20-inch aluminum wheels and P245/45ZR20 BSW All-Season performance tires, Rallye Group includes dual body stripes, rear body-color spoiler, and 18-inch aluminum wheels. Super Sport Group includes 20-inch aluminum chrome-clad wheels, P245/45ZR20 BSW performance tires, performance steering and suspension, antilock 4-wheel disc performance brakes and a 3.06 axle ratio.



CHALLENGER R/T INCLUDES:

ADDITIONAL STANDARD FEATURES: Performance antilock 4-wheel brakes, performance steering, performance suspension, antispin rear axle (manual transmission), folding heated body-color exterior mirrors, body-color rear spoiler. **OPTIONAL FEATURES:** Engine block heater, power sunroof, 20-inch chrome-clad aluminum wheels and P245/45ZR20 BSW All-Season performance tires, hood-to-fender stripe (Red, Black, Silver), Super Track Pak includes heavy-duty 4-wheel antilock brakes, performance steering, track-tuned suspension, P245/45ZR20 BSW performance tires, and Mopar Exterior Appearance Group.

CHALLENGER R/T PLUS INCLUDES:

OPTIONAL FEATURES: Engine block heater, power sunroof, Xenon High Intensity Discharge (HID) headlamps, 20-inch chrome-clad aluminum wheels, P245/45ZR20 BSW All-Season performance tires, hood-to-fender stripe (Red, Black, Silver), Super Track Pak includes heavy-duty 4-wheel antilock brakes, performance steering, track-tuned suspension, P245/45ZR20 BSW performance tires, and Mopar Exterior Appearance Group.



CHALLENGER R/T CLASSIC INCLUDES:

ADDITIONAL STANDARD FEATURES: Dual R/T bodyside stripes, Xenon HID headlamps, functional hood scoop, Challenger script badge, and 20-inch forged polished aluminum wheel or 20-inch aluminum wheel included with Green With Envy. **OPTIONAL FEATURES:** Engine block heater, power sunroof, Super Track Pak includes heavy-duty 4-wheel antilock brakes, performance steering, track-tuned suspension, P245/45ZR20 BSW performance tires.



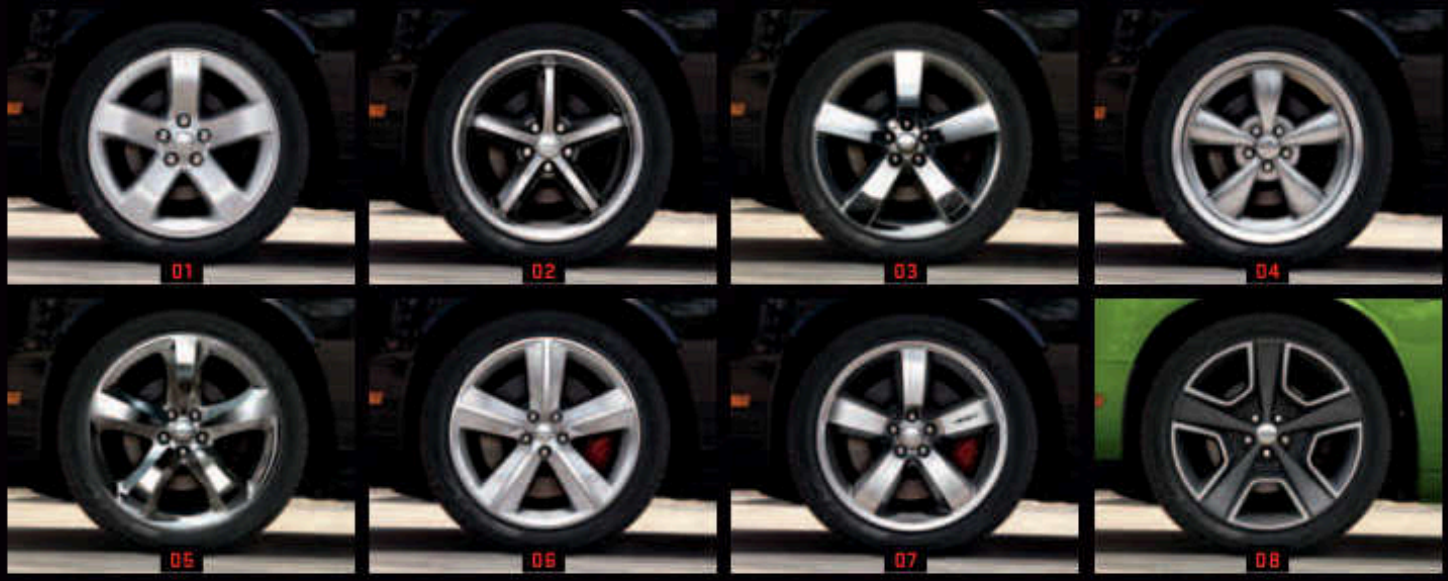
CHALLENGER SRT8® 392 INCLUDES:

ADDITIONAL STANDARD FEATURES: High-performance Brembo® 4-piston 4-wheel antilock brakes with vented front and rear discs, severe-duty engine cooling, high-performance-tuned steering, high-performance suspension, tip-to-tail dual stripes, 392 HEMI® fender badge, unique body-color spoiler, P245/45ZR20 three-season performance tires, 20-inch SRT® design aluminum wheels, TIREFIT system, functional hood scoop. **OPTIONAL FEATURES:** Power sunroof, P245/45ZR20 and P255/45ZR20 F1 performance tires.



	Billet Silver Metallic	Toxic Orange Pearl	Tungsten Metallic	Blackberry Pearl	Bright White	Brilliant Black Crystal Pearl	Redline 1 Coat Pearl	Green With Envy*	Deep Water Blue Pearl†
CHALLENGER SE	•	•	•	•	•	•	•	•	•
CHALLENGER RALLYE	•	•	•	•	•	•	•	•	•
CHALLENGER R/T	•	•	•	•	•	•	•	•	•
CHALLENGER R/T PLUS	•	•	•	•	•	•	•	•	•
CHALLENGER R/T CLASSIC	•	•	•	•	•	•	•	•	•
CHALLENGER SRT8® 392	•	•	•	•	•	•	•	•	•
CHALLENGER SRT8 392 INAUGURAL EDITION†	•	•	•	•	•	•	•	•	•

*R/T and SRT8 392. Late availability. †Limited availability.



CHALLENGER WHEELS

01. 18-inch Painted Aluminum 02. 18-inch Aluminum Painted/Polished 03. 20-inch Aluminum Chrome-Clad
 04. 20-inch Polished Forged Aluminum 05. 20-inch Aluminum Chrome-Clad 06. 20-inch SRT® Design Aluminum Wheels
 07. 20-inch Aluminum with Black Pockets SRT8 392 Inaugural Edition Design 08. 20-inch Aluminum Wheel* *R/T Green With Envy model, late availability.



DODGE.COM/LIFE // Check out an extensive line of gifts and gear for the Dodge enthusiast. From authentic apparel to die-cast replica cars for the collector, as well as electronics and office supplies, all lifestyle items are as bold as your Dodge vehicle.

These products are for placement only; refer to dodge.com/life for current product availability.

SPECIFICATIONS

INTERIOR FEATURES STANDARD ON ALL DODGE CHALLENGERS // Keyless Enter-N-Go; Push-button start; Sentry Key[®] engine immobilizer; Air conditioning with single-zone automatic temperature control; Electronic Vehicle Information Center with mini trip computer; Electronic speed control; Tire pressure monitoring system; Media Center 130 radio with CD/MP3 and audio jack; 6-speaker sound system; Illuminated front cup holders; Illuminated door pulls; Rear courtesy lamps; 12-volt power outlet; One-touch auto-down front windows; Leather-wrapped steering wheel with audio, speed control, and EVIC switches; Manual tilt/telescoping steering column; Leather-wrapped shift knob; 6-way power driver seat with 4-way power lumbar and EZ-Entry feature; Active head restraints;^[7] Supplemental front-seat mounted side air bags;^[6] Advanced multistage driver and front-passenger air bags;^[6] Side-curtain air bags;^[6] 60/40 split-folding rear seat with armrest and two cup holders; Power trunk release; Trunk lamp; Front and rear luxury floor mats.

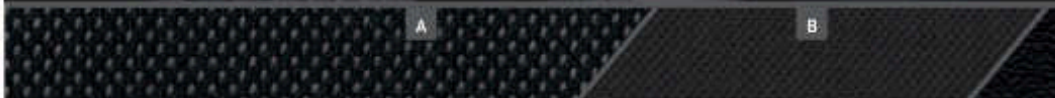


CHALLENGER SE INCLUDES // Interior – 140-mph speedometer, Cloth door bolsters, Driver and front-passenger visors with vanity mirrors, Cloth-trimmed bucket seats, and mini carbon center stack and shifter bezels. Available: SIRIUS[®] Satellite Radio,^[4] Mopar[®] Interior Appearance Group.

A-B) Momentum/Wallace II cloth – Dark Slate Gray.

CHALLENGER RALLYE INCLUDES // Adds or replaces Standard Interior Features on Challenger SE: Leather-trimmed front bucket seats with heat, Perforated vinyl door bolsters, Boston Acoustics[®] 6-speaker sound system, 276-watt amplifier, Automatic headlamps, Driver and front-passenger visors with illuminated vanity mirrors, SIRIUS Satellite Radio,^[4] Uconnect[®] Phone, USB port with iPod[®] control. Available: Electronics Convenience Group includes Remote Start (automatic transmission only), Universal Garage Door Opener, Temperature and compass gauge, Premium Tire Pressure Monitoring Display, and Security Alarm. Sound Group II includes Media Center 430 radio, 7 Boston Acoustics speakers and a 276-watt amplifier, Media Center 430N radio with Garmin[®] Navigation, Media Center 730N Navigation Radio with Voice Command, SIRIUS Traffic,^[4] and SIRIUS Travel Link.^[4]

C-D) Nappa leather trim/Caprice vinyl – Dark Slate Gray.



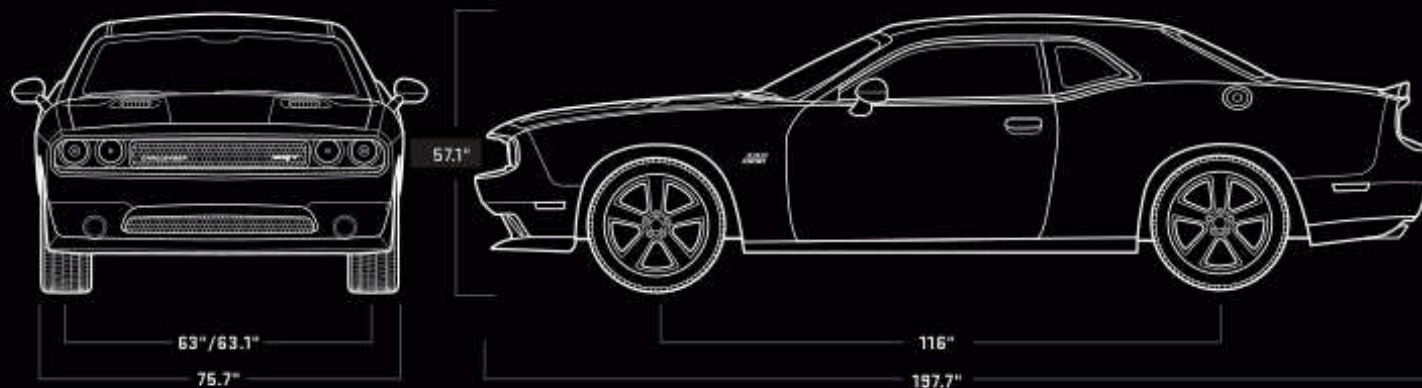
CHALLENGER R/T INCLUDES // Adds or replaces Standard Interior Features on Challenger SE: 160-mph speedometer, Automatic headlamps, Driver and front-passenger visors with illuminated vanity mirrors, SIRIUS Satellite Radio,^[4] Uconnect Phone, USB port with iPod control, Dodge mesh finish center stack and shifter bezels, Bright pedals. Available: Electronics Convenience Group includes Remote Start (automatic transmission only), Universal Garage Door Opener, Temperature and compass gauge, Premium Tire Pressure Monitoring Display, and Security Alarm. Sound Group II includes Media Center 430 radio, 7 Boston Acoustics speakers and a 276-watt amplifier, Media Center 430N radio with Garmin Navigation, Media Center 730N Navigation Radio with Voice Command, SIRIUS Traffic,^[4] and SIRIUS Travel Link.^[4] Mopar[®] Interior Appearance Group.

E-F) Momentum/Wallace II cloth – Dark Slate Gray.

CHALLENGER R/T PLUS AND CHALLENGER R/T CLASSIC INCLUDE // Adds or replaces Standard Interior Features on Challenger R/T: Leather-trimmed front bucket seats with heat, Perforated vinyl door bolsters, Boston Acoustics 6-speaker sound system, 276-watt amplifier. Electronics Convenience Group: Remote Start (automatic transmission only), HomeLink[®] Universal Garage Door Opener, Temperature and compass gauge, Premium Tire Pressure Monitoring Display, and Security Alarm. Available: Sound Group II includes Media Center 430 radio, 7 Boston Acoustics speakers and a 276-watt amplifier, Media Center 430N radio with Garmin Navigation, Media Center 730N Navigation Radio with Voice Command, SIRIUS Traffic,^[4] and SIRIUS Travel Link.^[4] Mopar[®] Interior Appearance Group.

G-H) Nappa leather trim/Caprice vinyl – Dark Slate Gray.





CHALLENGER SRTB® 392 INCLUDES // Adds or replaces Standard Interior Features on Challenger R/T Plus: 180-mph speedometer; Instrument Cluster with Performance Display Screens; Performance bolstered premium leather-trimmed bucket seats; Brushed Silver Metal finish center stack, shifter bezels and door pulls; Media Center 430 radio; and Security Alarm. Available: SRT® Option Group II includes 13 KICKER® SRT high-performance audio speakers, 322-watt KICKER amplifier and 200-watt KICKER SRT subwoofer, Media Center 430N radio with Garmin Navigation, Media Center 730N Navigation radio with Voice Command, SIRIUS Traffic,⁽⁴⁾ and SIRIUS Travel Link.⁽⁴⁾ Mopar Interior Appearance Group.

I-J) Nappa leather trim/Axis II suede inserts/Caprice vinyl
 – Dark Slate Gray with Red or Mango seatback accent bands



CHALLENGER SRTB 392 INAUGURAL EDITION* // Adds or replaces Standard Interior Features on Challenger SRTB: Pearl premium leather-trimmed seats with Blue accent stripes, Numbered dash plaque, Mopar decal. Available: SRT Option Group II includes 13 KICKER SRT high-performance audio speakers, 322-watt KICKER amplifier and 200-watt KICKER SRT subwoofer, Media Center 430N radio with Garmin Navigation, Media Center 730N Navigation radio with Voice Command, SIRIUS Traffic,⁽⁴⁾ and SIRIUS Travel Link.⁽⁴⁾

K-M) Nappa leather trim/Caprice vinyl – Pearl/Blue/Dark Slate Gray

*Limited availability.



DODGE.COM/CHALLENGER



5 YEAR/100,000 MILE
POWERTRAIN WARRANTY

DODGE LIFE

Service
Contracts



Uconnect

SIRIUS
SATELLITE RADIO
THE BEST RADIO OR RADIO

AUTOMOBILITY
PROGRAM
STARTING IN 2008 | 2009 | 2010 | 2011



¹¹Based on Ward's Vehicle segmentation. ¹²Phone must support Bluetooth Phone Book Access Profile (PBAP). ¹³The Uconnect Web feature is not intended for use by the driver while the vehicle is in motion. Always drive carefully. Subscription required. ¹⁴Required SIRIUS Radio, Traffic, Travel Link, and Backseat TV subscriptions sold separately after trial period. Other fees and taxes will apply. SIRIUS Traffic and Travel Link available in select markets; Backseat TV subscription not available without SIRIUS Satellite Radio subscription; and SIRIUS data displays and individual product availability vary by hardware equipment. SIRIUS service available only to those at least 18 years of age in the 48 contiguous U.S.A., DC, and Puerto Rico (with coverage limitations), while Internet radio is also available in AK, HI, and PR, fees and programming subject to change. Service automatically renews and you will be billed, at then current rates, unless you call 1-888-539-7474 to cancel. Subscriptions governed by SIRIUS Terms and Conditions available at sirius.com. Service available in Canada; see www.siriuscanada.ca. ¹⁵No system, no matter how sophisticated, can repeal the laws of physics or overcome careless driving actions. Performance is limited by available traction, which snow, ice and other conditions can affect. When the ESC warning lamp flashes, the driver needs to use less throttle and adapt speed and driving behavior to prevailing road conditions. Always drive carefully, consistent with conditions. Always wear your seat belt. ¹⁶The Advanced Front Air Bags in this vehicle are certified to the new federal regulations for advanced air bags. Children 12 years old and younger should always ride buckled-up in a rear seat. Infants in rear-facing child restraints should never ride in the front seat of a vehicle with a passenger front air bag. All occupants should always wear their lap and shoulder belts properly. ¹⁷Always sit properly with the head restraint properly adjusted. Never place anything in front of the head restraint. ¹⁸Also equipped with 5-speed AutoStick.

5-YEAR/100,000-MILE POWERTRAIN LIMITED WARRANTY. Transferable. See dealer for a copy of limited warranty. Includes towing to an authorized dealer. **3/36 BASIC LIMITED WARRANTY.** Dodge vehicles are covered by a Chrysler Group LLC 3-Year or 36,000-Mile Basic Limited Warranty. See your dealer for a copy of this limited warranty. Excludes normal maintenance and wear items. **AUTOMOBILITY.** Chrysler Group LLC's Automobility program provides aftermarket maintenance incentives on a 60-month vehicle with equipment in order to help provide safe and reliable vehicle modifications to enhance accessibility for all people. For more information, call 1-800-255-9877 or visit chryslerautomobility.com. **CHRYSLER SERVICE CONTRACTS.** Chrysler Group LLC has a vested interest in your satisfaction and owner experience with your new Dodge vehicle. Chrysler Group Service Contracts offer extended service plans to help ensure that you'll enjoy your vehicle for many years down the road. For more information on comprehensive vehicle coverage, see your Dodge dealer, call (800) 449-2866, or visit dodge.com/vsc. **AUTHENTIC DODGE ACCESSORIES BY MOPAR®** are designed specifically for your Dodge vehicle for exceptional fit, finish, and performance. Visit your dealership or repair shop. **UCONNECT®** With Uconnect, you're always connected -- to people, places, music, movies and the Internet. **SIRIUS® SATELLITE RADIO®** delivers over 130 channels, including 100% commercial-free music, sports, news, talk, entertainment, traffic and weather. Factory-installed SIRIUS Satellite Radio includes a one-year subscription. For more information, go to sirius.com. **DODGE LIFE** is a collection of hand-picked items bearing the powerful Dodge name -- from Motorsports apparel and collectible die-cast models to the hottest jeans for work and weekend fun. It's all found at dodge.com/life. **HONORING THOSE WHO SERVE.** Chrysler Group LLC proudly supports the members of the U.S. Armed Forces and their families.

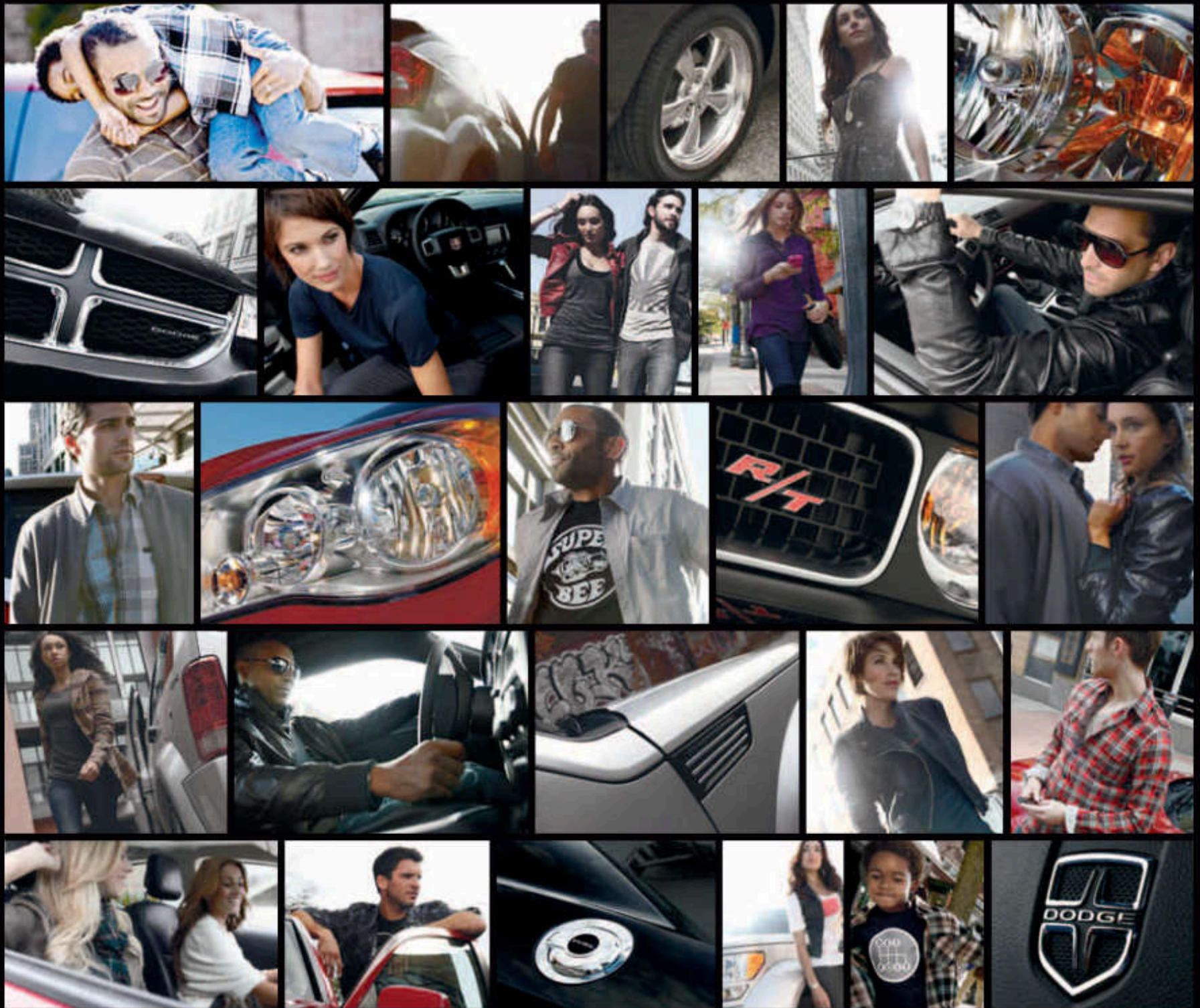
About this catalog: Since the time of printing, some of the information you'll find in this catalog may have been updated. Ask your dealer for details. Some of the equipment shown or described throughout this catalog is available at extra cost. Specifications, descriptions, illustrative materials, and all competitive comparisons contained herein are as accurate as known at the time this publication was approved for printing. Chrysler Group LLC reserves the right to discontinue models at any time or change specifications without notice and without incurring obligation. All options are required in combination with other options. For the price of the model with the equipment you desire, or verification of specifications contained here, see your Dodge dealer. Challenger, Dodge, HEMI, Mopar, Pentastar, SentryKey, SRT, SRT4 and Uconnect are registered trademarks of Chrysler Group LLC. SIRIUS, XM, and all related marks and logos are trademarks of SIRIUS XM Radio Inc. and its subsidiaries. Bluetooth is a registered trademark of Bluetooth SIG, Inc. HomeLink is a registered trademark owned by Johnson Controls, Inc. Boston Acoustics and the Boston Acoustics logo are registered trademarks of Boston Acoustics, Inc. All rights reserved. iPad is a registered trademark of Apple Inc. All rights reserved. iRevo is a registered trademark of iRevo GmbH. Facebook is a registered trademark of Facebook, Inc. Twitter is a registered trademark of Twitter, Inc. KICKER is a registered trademark of Kicker Design and Audio, Inc. Garmin and the Garmin logo are registered trademarks of Garmin Ltd. or its subsidiaries and are registered in one or more countries, including the U.S. Bilstein is a registered trademark of August-Bilstein GmbH & Co. YouTube is a registered trademark of YouTube Google, Inc.



Join fellow Dodge enthusiasts and tell your story by posting comments, participating in discussions, and sharing your photos and videos. Join our community on Facebook, follow us on Twitter, and check us out on YouTube.



Challenger R/T in Redline 3 Coat Pearl.



DODGE 
800-4ADODGE // DODGE.COM

Dodge is a registered trademark of Chrysler Group LLC.