



DODGE.COM // 800-4ADODGE

DODGE GOODS

Check out an extensive line of gifts and gear for the Dodge enthusiast. From authentic apparel to die-cast replica cars for the collector, as well as electronics and office supplies, all lifestyle items are as bold as your Dodge Brand vehicle. Refer to dodge.com/life for our full product lineup.

GO MOBILE

Take a multimedia tour of your vehicle on your mobile device. Log on to the dodge.com mobile site for an at-a-glance review of what you need to know about your Dodge Brand vehicle. Experience visual and interactive demonstrations while gaining access to product information at your fingertips, wherever you go.

[1] SiriusXM subscriptions for audio and data services are sold by SiriusXM to follow your trial subscription. If you decide to continue listening after your trial, the subscription plan you choose will automatically renew thereafter and you will be charged according to your chosen payment method at then-current rates. Fees and taxes apply. To cancel, you must call SiriusXM at 1-866-635-2349. See the SiriusXM Customer Agreement for complete terms and more information at www.siriusxm.com. All fees and programming subject to change. Your equipment and features for SiriusXM services will vary depending upon the vehicle you select and may be limited in select markets. [2] Always sit properly with the head restraint properly adjusted. Never place anything in front of the head restraint. [3] ACC is a driver convenience system, not a substitute for active driver involvement. The driver must remain aware of traffic conditions and be prepared to use the brakes to avoid collisions. [4] The Advanced Front Air Bags in this vehicle are certified to the new U.S. federal regulations for advanced air bags. Children 12 years old and younger should always ride buckled up in a rear seat. Infants in rear-facing child restraints should never ride in the front seat of a vehicle with a passenger front air bag. All occupants should always wear their lap and shoulder belts properly. [5] Always check visually for vehicles prior to changing lanes. [6] Always look before proceeding, electronic drive aid is not a substitute for conscientious driving, always be aware of your surroundings. [7] FCW system is solely an alert system for the front of the vehicle which does not take any actions to change the vehicle dynamics to avoid a collision and is not a substitute for active driver involvement. The driver must remain aware of traffic conditions and be prepared to use the brakes to avoid collisions. [8] No system, no matter how sophisticated, can repeal the laws of physics or overcome careless driving actions. Performance is limited by available traction, which snow, ice and other conditions can affect. When the ESC warning lamp flashes, the driver needs to use less throttle and adapt speed and driving behavior to prevailing road conditions. Always drive carefully, consistent with conditions. Always wear your seat belt. [9] Requires a mobile phone equipped with the Bluetooth Hands-Free Profile. Visit UconnectPhone.com for system and device compatibility. [10] Uconnect Access is available only on equipped vehicles purchased within the contiguous United States plus Alaska. Services can only be used where cellular coverage is available, see coverage map for details. For a complete list of Uconnect Access services, please visit http://www.drivesconnect.com/features/uconnect_access/packages/. Vehicle must be registered for Uconnect Access and fulfill minimum subscription requirements. [11] LDW is a driver convenience system, not a substitute for active driver involvement. The driver must remain aware of traffic conditions and be prepared to use brakes to avoid collisions. [12] For children 48 - 65 lb and up to 4'9". [13] Transferable. See Dealer for complete details and a copy of the 5-Year/60,000-Mile Powertrain Limited Warranty.

©2016 FCA US LLC. All Rights Reserved. Dodge, SRT, Viper, Mopar, 392 HEMI, Automobile Program, Blacktop, Challenger, Charger, Citadel, Dabarrad, Durango, Grand Caravan, HEMI, Journey, LaneSense, ParkSense, ParkView, Pentastar, R/T, Sentry Key, Stow 'n Go, Stow 'n Place, SXT, TorqueFlite and Uconnect are registered trademarks, and Air Catcher, Icat Pack, SRT Helical and Keyless Enter 'n Go are trademarks of FCA US LLC.

Alpine is a registered trademark of Alpine Electronics, Inc. Apple CarPlay is a registered trademark of Apple Inc. Facebook and logo are registered trademarks of Facebook, Inc. Goodyear is a registered trademark of The Goodyear Tire & Rubber Company. The Twitter logo is a service mark of Twitter, Inc. YouTube and logo, Android Auto and logo, and Google+ and logo are registered trademarks of Google Inc. Instagram and logo are registered trademarks of Instagram, Inc. Pinterest and logo are registered trademarks of Pinterest, Inc. Bluetooth is a registered trademark of Bluetooth SIG, Inc. Blu-ray is a trademark of Blu-ray Disc Association. Bilstein is a registered trademark of August-Bilstein GmbH & Co. Brembo is a registered trademark of Friet Brembo S.p.A. Dr. Dre, Beats and the b logo are trademarks of Beats Electronics, LLC. Harman Kardon is a registered trademark and GreenEdge is a trademark of Harman International Industries, Inc. SIRIUS, XM and all related marks and logos are trademarks of SiriusXM Radio Inc. and its subsidiaries. TREMEC is a registered trademark of Transmisiones Y Equipos Mecánicos, S.A. de C.V.

About this brochure since the time of printing, some of the information you'll find in this brochure may have been updated. Ask your dealer for details. Some of the equipment shown or described throughout this brochure is available at extra cost. Specifications, descriptions, illustrative materials and all competitive comparisons contained herein are as accurate as known at the time this publication was approved for printing. FCA US LLC reserves the right to discontinue models at any time or change specifications without notice and without incurring obligation. Some options may be required in combination with other options. For the price of the model with the equipment you desire, or verification of specifications contained here, see your Dodge dealer.

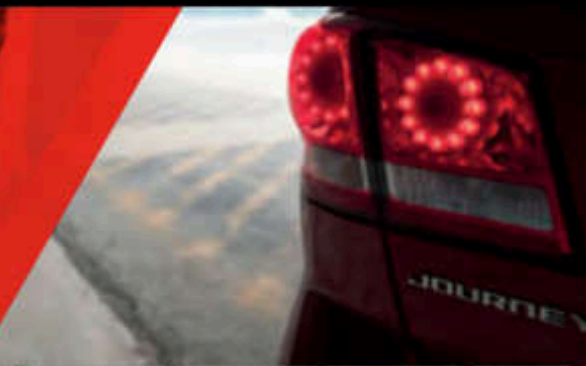
Dodge is a registered trademark of FCA US LLC.

Phone #811-888-2775 #108 (MO 47MM)

See us constantly.



2017 VIPER /// CHALLENGER /// CHARGER /// DURANGO /// JOURNEY /// GRAND CARAVAN



2017 DODGE LINEUP



2017 DODGE VIPER ////

The Dodge Viper is the ultimate American supercar, hand-built with exotic materials, exceptional performance and one-of-a-kind design. At the heart of the 2017 Viper is the handcrafted, all-aluminum 8.4-liter V10 overhead-valve engine, rated at 645 horsepower and 600 lb-ft of torque. A frame constructed with high-strength steel and magnesium and body panels of hand-laid carbon fiber and super-formed aluminum bring a top-shelf power-to-weight ratio for optimum on-track performance. The driver-oriented, race-inspired, high-performance interior features hand-sewn premium materials, while hand-painted body panels and stripes offer exterior distinctiveness. **Find out more at driveSRT.com**

//// Dodge Viper ACR shown in Billet Silver Metallic with Black center band and Red driver-side stripes.

//// 2017 DODGE CHALLENGER

	SXT	SXT PLUS	R/T	R/T PLUS	R/T SHAKER	R/T PLUS SHAKER	R/T SCAT PACK	392 HEMI [®] SCAT PACK SHAKER	SRT [®] 392	SRT HELLCAT
--	-----	----------	-----	----------	------------	-----------------	---------------	--	----------------------	-------------

DRIVETRAINS

3.6L Pentastar [®] Variable Valve Timing (VVT) V6 — 305 horsepower	•	•								
5.7L HEMI VVT V8 — 375 / 372 horsepower (manual/automatic)			•	•	•	•				
6.4L 392 HEMI V8 — 485 horsepower							•	•		
Supercharged 6.2L SRT Hellcat HEMI V8 — 707 horsepower, patented Air Catcher [™] headlamp									•	•
TREMEC [®] 6-speed manual transmission			•	•	•	•	•	•	•	•
TorqueFlite [®] 8-speed automatic transmission	•	•	0	0	0	0	0	0	0	0

FEATURES

Shaker Hood with cold-air induction					•	•	•	•		
7-inch reconfigurable digital cluster display	•	•	•	•	•	•	•	•	•	•
Keyless Enter [™] 'n Go [™] with push-button start	•	•	•	•	•	•	•	•	•	•
Dual-Zone Automatic Temperature Control (ATC)	•	•	•	•	•	•	•	•	•	•
SRT flat-bottom heated steering wheel									•	•
Paddle shifters with rev matching	0	0	0	0	0	0	0	0	0	0
Active exhaust			•	•	•	•	•	•	•	•
Brembo [®] 4-piston brakes, high-performance steering, and suspension with Bilstein [®] shocks and 15-inch lower ride height								•	•	
Brembo 6-piston front brakes with 15.4-inch 2-piece vented/slotted rotors									•	•
High-performance Bilstein [®] adaptive damping 3-mode suspension and 15-inch lower ride height									•	•
Super Track Pack — High-performance steering, performance suspension, P245/45ZR20 BSW Goodyear [®] tires, rear body-color spoiler (includes rear back-up camera ¹ on SXT and R/T) and Dodge Performance Pages	0	0	0	0	•	•				
Seating — Cloth sport	•	•								
— Cloth premium high-performance					•	•				
— Leather-trimmed sport		•	•							

*A note about this brochure: all disclaimers and disclosures can be found on the back cover.

FEATURES continued

— Leather-trimmed performance					0	•	0	•		
— Laguna leather high-performance									•	•
— Leather-suede-trimmed high-performance									0	0
— Heated front	0	•	0	•	•	•	•	•	•	•
— Ventilated front		•	•	•	•	•	•	•	•	•

ENTERTAINMENT

Radios — Uconnect [®] 5.0 AM/FM/Bluetooth [®]	•	•	•							
— Uconnect 8.4 AM/FM/SiriusXM [®] 11/Bluetooth/Apple CarPlay [®] /Android Auto [®]		•	•	•	•	•	•	•	•	•
— Uconnect 8.4 with Navigation AM/FM/SiriusXM [®] /Bluetooth/Apple CarPlay/Android Auto	0	0	0	0	0	0	0	0	•	•
Sound systems — 6 speakers	•	•	•							
— 6 premium speakers with 276-watt amplifier	0	•	0	•	0	•	•	•	•	•
— 9 premium speakers with subwoofer and 505-watt amplifier			0	0		0	0	0	0	0
— 18-speaker premium audio system with 900-watt Harman International [®] GreenEdge [™] amplifier and subwoofer			0	0		0	0	0	0	•
SiriusXM Satellite Radio [®] with 1-year trial subscription	0	•	0	•	•	•	•	•	•	•
SiriusXM Travel Link [™] and SiriusXM Traffic [™] with 5-year trial subscription	0	0	0	0	0	0	0	0	0	0

SAFETY AND SECURITY

Active head restraints ¹²	•	•	•	•	•	•	•	•	•	•
Adaptive Cruise Control (ACC) ¹³		0	0	0	0	0	0	0	0	0
Air bags ¹⁴ — Advanced multi-stage	•	•	•	•	•	•	•	•	•	•
Blind Spot Monitoring (BSM) ¹⁵ with Rear Cross-Path Detection ¹⁶	0	0	0	0	0	0	0	0	0	•
Forward Collision Warning (FCW) ¹⁷		0	0	0	0	0	0	0	0	0
ParkSense [®] Rear Park Assist ¹⁸	0	•	0	•	•	•	•	•	•	•
ParkView [®] Rear Back-Up Camera ¹⁹ with Dynamic Grid Lines	0	•	0	•	•	•	•	•	•	•

• = Standard, 0 = Optional.



ICONIC STYLE. LEGENDARY REPUTATION.

Top left: Challenger R/T Scat Pack interior shown with optional Leather Interior Group.

Top right: Challenger R/T Scat Pack shown in White Knuckle.

Bottom left: Challenger 392 HEMI Scat Pack Shaker shown in Go Mango.

Professional driver. Closed course.



FOUR-DOOR FAST.

Top left: Charger R/T Scat Pack shown in Pitch Black.

Top right: Charger R/T interior shown.

Bottom right: Charger SRT[™] Hellcat shown in White Knuckle.

//// 2017 DODGE CHARGER

DRIVETRAINS

	SE	SXT	R/T	R/T SCAT PACK	SRT [™] 392	SRT HELLCAT
3.6L Pentastar [™] Variable Valve Timing (VVT) V6 — 292 horsepower, TorqueFlite [™] 6-speed transmission	•	•				
5.7L HEMI [™] VVT V8 — 370 horsepower, TorqueFlite 8-speed transmission			•			
6.4L 392 HEMI V8 — 485 horsepower, TorqueFlite 8-speed transmission				•	•	
Supercharged 6.2L SRT Hellcat HEMI V8 — 707 horsepower, TorqueFlite 8-speed transmission						•
All-Wheel Drive (AWD) with active transfer case and front-axle disconnect	0	0				

FEATURES

7-inch reconfigurable digital cluster display	•	•	•	•	•	•
Keyless Enter [™] 'n Go [™] with push-button start	•	•	•	•	•	•
Memory system — Includes driver seat, radio presets, exterior mirrors, steering column and pedals (when equipped)		0	0	0	•	•
Remote start	0	•	•	•	•	•
Steering wheel-mounted paddle shifters		0	•	•	•	•
Sport Mode		0	•			
High Intensity Discharge (HID) projector headlamps		0	0	0	•	
20-inch aluminum wheels		0	•	•	•	•
Active exhaust				•	•	•
Brembo [™] 4-piston brakes, high-performance steering, and suspension with Bilstein [™] shocks and 1/2-inch lower ride height				•		
Brembo 6-piston front brakes with 15.4-inch 2-piece vented/slotted rotors					•	•
High-performance Bilstein adaptive damping 3-mode suspension and 1/2-inch lower ride height						•
Seating — Cloth		•				
— Cloth sport			•	•		
— Cloth premium high-performance					•	
— Leather-trimmed sport				0	0	
— Laguna leather high-performance					•	•
— Leather-seats-trimmed high-performance					0	0
— Heated front			•	•	0	•
— Heated rear			0	0	0	•
— Ventilated front			0	0	0	•

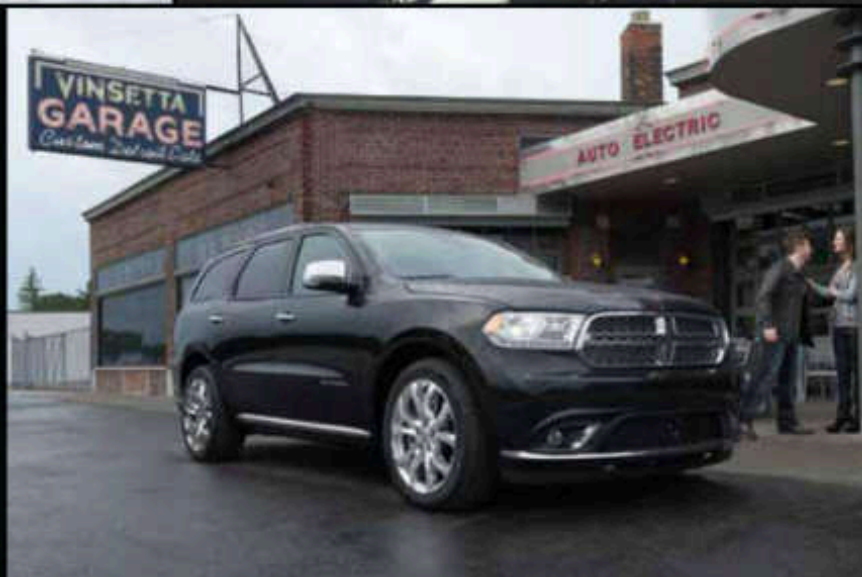
ENTERTAINMENT

Radies — Uconnect [™] 5.0 AM/FM/Bluetooth [®]	•					
— Uconnect 8.4 AM/FM/SiriusXM [™] /Bluetooth/Apple CarPlay [™] /Android Auto [™]		•	•	•		
— Uconnect 8.4 with Navigation AM/FM/SiriusXM/Bluetooth/Apple CarPlay/Android Auto					•	•
Sound systems — 6 speakers	•					
— 6 premium speakers with 276-watt amplifier		•	•	•	•	•
— 10 Beats [™] amplified speakers and 552-watt amplifier with trunk-mounted subwoofer		0	0	0		
— 18-speaker premium audio system with 900-watt Harman Kardon [™] GreenEdge [™] amplifier and subwoofer						0
SiriusXM Satellite Radio [™] with 1-year trial subscription	0	•	•	•	•	•
SiriusXM Travel Link [™] and SiriusXM Traffic [™] with 5-year trial subscription	0	0	0	0	0	0

SAFETY AND SECURITY

Active head restraints ⁽¹⁾		•	•	•	•	•
Adaptive Cruise Control with Stop (ACC Stop) ⁽¹⁾			0	0	0	0
Air bags ⁽²⁾ — Advanced multistage		•	•	•	•	•
— Supplemental front seat-mounted side		•	•	•	•	•
— Supplemental side-curtain for front and rear outboard occupants		•	•	•	•	•
Electronic Stability Control (ESC) ⁽³⁾ — Includes Brake Assist		•	•	•	•	•
Blind Spot Monitoring (BSM) ⁽⁴⁾ with Rear Cross-Path Detection ⁽⁴⁾			0	0	0	•
Advanced Brake Assist (ABA)			0	0	0	0
Brake-Park Interlock			•	•	•	•
Full-Speed Forward Collision Warning with Active Braking (FSCW+) ⁽⁵⁾			0	0	0	0
Front-passenger seat belt alert		•	•	•	•	•
Hill Start Assist (HSA)		•	•	•	•	•
ParkSense [™] Rear Park Assist ⁽⁶⁾		0	0	0	•	•
ParkView [®] Rear Back-Up Camera ⁽⁷⁾ with Dynamic Grid Lines			0	0	•	•
Rain Brake Support		•	•	•	•	•
Ready Alert Braking		•	•	•	•	•
Sentry Key [™] Theft Deterrent System		•	•	•	•	•
Tire Pressure Monitoring Display		•	•	•	•	•

• = Standard. 0 = Optional.



7-SEAT CHARGER.

Top left: Durango Citadel shown in Granite Crystal Metallic.

Top right: Durango R/T interior shown.

Bottom right: Durango Citadel shown in DB Black.

//// 2017 DODGE DURANGO

	SXT	GT	CITADEL	R/T
DRIVETRAINS				
3.6L Pentastar® Variable Valve Timing (VVT) V6 — 295 horsepower TorqueFlite® 8-speed automatic transmission (290 horsepower on SXT)	•	•	•	
5.7L HEMI® VVT V8 with Fuel Saver Technology — 360 horsepower TorqueFlite 8-speed automatic transmission			0	•
All-Wheel-Drive (AWD) System — Single-speed, full-time (packaged with 3.6L V6 engine)	0	0	0	
— 2-speed active on-demand AWD (packaged with 5.7L V8 engine)			0	0
Engine Start/Stop (ESS) technology	•	•	•	
Sport Mode Technology	•	•	•	•
FEATURES				
Remote Start System		•	•	•
Roof rack — Bright side roof rails with integrated, stowable crossrails	0		•	
— Gloss Black side roof rails with integrated, stowable crossrails		0	0	0
Sunroof	0	0	•	0
Seating — Premium cloth	•			
— Leather-trimmed		•		
— Leather-trimmed with perforated inserts			•	•
— Heated front	0	•	•	•
— Heated rear		•	•	•
— Ventilated front			•	•
— Front-passenger forward fold-flat	•	•		
— 2 nd -row 60/40 split Fold 'n Tumble with headrests	0	•	•	•
— Fold 'n Tumble Captain's Chairs	0	0	0	0
— 3 rd -row 50/50 split-folding; includes headrests which can be folded down electrically from a switch on the instrument panel center stack	0	•	•	•
Monochromatic exterior appearance	0	0	•	
Paddle shifters	•	•	•	
Mini floor console with cup holders and storage	0	0	0	0
2 nd -row floor console with armrest, covered storage, illuminated cup holders, 12V auxiliary outlet and USB charging port	0	0	0	0
Memory system — Includes driver's seat, radio presets, exterior mirrors and settings for 2 drivers		•	•	•
Heated steering wheel	0	•	•	•
7-inch reconfigurable digital cluster display	•	•	•	•
Rotary electronic shifter	•	•	•	•

	SXT	GT	CITADEL	R/T
ENTERTAINMENT				
6-speaker sound system	•	•		
Alpine® Premium Audio System with 9 speakers, subwoofer and 506-watt amplifier			•	•
Beats® Premium Audio System with 9 speakers, subwoofer and 506-watt amplifier		0	0	•
Radios — Uconnect® 5.0 AM/FM/Bluetooth®		•		
— Uconnect 8.4 AM/FM/Bluetooth/Access™		0	•	
— Uconnect 8.4 NAV™/AM/FM/Bluetooth/Access™/NAV			0	•
Uconnect Access™ with 1-year trial subscription		0	•	•
Integrated Voice Command™		•	•	•
SiriusXM® Satellite Radio™ with 1-year trial subscription		0	•	•
Dual seatback-mounted Blu-ray™/DVD Entertainment System		0	0	0
SAFETY AND SECURITY				
Air bags™ — Advanced multistage, supplemental side-curtain (all rows), supplemental side, driver inflatable knee bulator, supplemental front-seat side		•	•	•
Adaptive Cruise Control with Stop (ACC Stop)™			0	0
Blind Spot Monitoring (BSM)™ with Rear Cross-Path Detection™		0	0	0
Electronic Stability Control (ESC)™ — Includes Brake Assist		•	•	•
Forward Collision Warning with Active Braking (FCW+)™			0	0
Hill Start Assist (HSA)		•	•	•
Keyless Enter 'n Go™ with push-button start		•	•	•
LaneSense® Lane Departure Warning System (LDW)™			0	0
ParkView® Rear Back-Up Camera™ with ParkSense® Rear Park Assist™		0	•	•
Security alarm		•	•	•
Trailer Sway Control (TSC)™		•	•	•
Universal Garage Door Opener		•	•	•
POPULAR PACKAGES				
Blacktop Package — Includes Gloss Black badging, Gloss Black grille, Gloss Black 20-inch wheels			0	0
Premium Group — Includes Nav & Power Liftgate Group, Black roof rails, power sunroof, Beats Premium Audio System (must have 3.6L V6 engine)		0		
Technology Group — Includes Adaptive Cruise Control with Stop (ACC Stop)™, Forward Collision Warning with Active Braking (FCW+)™, Advanced Brake Assist, LaneSense Lane Departure Warning with Lane Keep Assist (LDW+)™, BSM™ and Rear Cross-Path Detector™ Systems			0	0

• = Standard. 0 = Optional.

//// 2017 DODGE JOURNEY

	SE	SXT	CROSSROAD	CROSSROAD PLUS	GT
--	----	-----	-----------	----------------	----

DRIVETRAINS

2.4L I4 DOHC 16-valve, Variable Valve Timing (VVT) — 173 horsepower, 4-speed automatic transmission	•	•	•	•	•
3.6L Pentastar™ VVT V6 — 283 horsepower, 6-speed transmission with AutoStick	0	0	0	0	•
Front-Wheel Drive (FWD)	•	•	•	•	•
All-Wheel Drive (AWD)	0	0	0	0	0

FEATURES

Seating — Premium cloth	•	•	•	•	•
— Leather-trimmed with Sport mesh inserts				•	
— Leather-trimmed				0	•
— Heated front				0	•
Power windows	•	•	•	•	•
Power door locks	•	•	•	•	•
Tilt/telescoping steering wheel	•	•	•	•	•
Variable/intermittent windshield wipers	•	•	•	•	•
Air conditioning	•	•	•	•	•
Cruise control	•	•	•	•	•
Projector fog lamps	•	•	•	•	•
Automatic headlamps	•	•	•	•	•
12V power outlets	•	•	•	•	•
Remote keyless entry	•	•	•	•	•
Universal Garage Door Opener			•	0	0

ENTERTAINMENT

Radios — Radio 4.2 AM/FM/CD/MP3	•	•			
— Radio 4.3 AM/FM/CD/MP3/SiriusXM™ ¹	0	0	•		
— Radio 8.4 AM/FM/CD/DVD/MP3				•	•
— Radio 8.4 NAV AM/FM/CD/MP3/NAV					0
Integrated Voice Command ²	0	0	•	•	•
SiriusXM Satellite Radio ¹ with 1-year trial subscription	0	0	•	•	•

SAFETY AND SECURITY

3-point seat belts	•	•	•	•	•
Active front-seat head restraints ³	•	•	•	•	•
Air bags ⁴ — Advanced multistage for driver and front passenger	•	•	•	•	•
— Supplemental seat-mounted	•	•	•	•	•
— Supplemental side-curtain	•	•	•	•	•
— Driver inflatable knee bolster	•	•	•	•	•
High-strength steel body	•	•	•	•	•
Child Seat Anchor System — LATCH-ready	•	•	•	•	•
Integrated child booster seat ⁵	0	0	0	0	0
4-wheel anti-lock disc brake system	•	•	•	•	•
Electronic Stability Control (ESC) ⁶	•	•	•	•	•
Security alarm		0	0	•	
Sentry Key [®] Theft Deterrent System	•	•	•	•	•
Tire Pressure Monitoring System	•	•	•	•	•

POPULAR PACKAGES

Blacktop Package — 19-inch Gloss Black wheels, air conditioning with Dual-Zone Automatic Temperature Control (ATC), Black headlamp bezels, side roof rails, exterior mirrors, fascia and grille, and Touring suspension		0			0
Driver Convenience Group — ParkSense [®] Rear Park Assist ⁷ , ParkView [®] Rear Back-Up Camera ⁸ and Universal Garage Door Opener					0
Flexible Seating Group — 2 nd -row TB ⁹ In Slide seat, 3 rd -row 50/50 fold-reclining seat, Easy Entry System seat and rear air conditioning with heater	0	•	•	•	•

• = Standard, 0 = Optional.



FLEXIBILITY NEVER LOOKED SO GOOD.

Top left, Journey Crossroad Plus shown with available Capri leather trim in Black with Light Slate Gray accent stitching.

Top right/bottom left, Journey Crossroad Plus shown in Granite Crystal Metallic.



BORN ROAD-READY.

Top left: Grand Caravan SE shown in Octane Red.

Top right: Grand Caravan SXT shown with optional equipment.

Bottom right: Grand Caravan SXT with Blacktop Package shown in Granite.



Properly secure all cargo.

//// 2017 DODGE GRAND CARAVAN

DRIVETRAINS

3.6L Pentastar® Flex Fuel DOHC Variable Valve Timing (VVT) V6 — 283 horsepower, 6-speed transmission with AutoStick	•	•	•	•
Front-Wheel Drive (FWD)	•	•	•	•

FEATURES

Seating — Premium cloth	•	•		
— Leather-trimmed with suede inserts			•	
— Leather-trimmed				•
— Power driver seat			•	•
— Heated front (included with Driver's Convenience Group)			P	•
— Heated front and 2 nd -row				•
— 2 nd -row removable bench with 3 rd -row 60/40 split Stow 'n Go® bench seat	•			
— 2 nd -row Super Stow 'n Go bucket seats with fold-in-floor storage and 3 rd -row 60/40 split Stow 'n Go tailgate seats	0	•	•	•
Power windows — Driver 1-touch, 2 nd -row and vented 3 rd -row	•	•	•	•
Power door locks	•	•	•	•
Power dual sliding doors			•	•
Power liftgate			•	•
Steering wheel with mounted audio controls	•	•	•	•
— Heated (included with Driver's Convenience Group)			P	•
Air conditioning — 3-Zone Temperature Control for front/rear	•	•	•	
— 3-Zone Automatic Temperature Control (ATC) (included with Driver's Convenience Group)			P	•
Fog lamps			•	•
12V power outlets	•	•	•	•
Remote keyless entry	•	•	•	•
Stow 'n Place® roof rack			•	0
Performance suspension			•	•

ENTERTAINMENT

Radio — Radio 430 AM/FM/CD/DVD/MP3/MOD (limited availability)	•	•	•	
— Radio 430N NAV AM/FM/CD/DVD/MP3/MOD/NAV				0
SiriusXM® Satellite Radio ¹ with 1-year trial subscription	P	•	•	•
Integrated Voice Command ²	P	•	•	•
Video screen — Single-DVD with 8-inch VGA	0	0	0	0

SAFETY AND SECURITY

3-point seat belts	•	•	•	•
Active front-seat head restraints ³	•	•	•	•
Air bags ⁴ — Driver knee blocker and driver and front-passenger	•	•	•	•
— Front seat side-mounted	•	•	•	•
— Side-curtain for all 3 rows	•	•	•	•
4-wheel anti-lock disc brake system	•	•	•	•
Crumple zones	•	•	•	•
ParkView® Rear Back-Up Camera ⁵ (included with 430 or 430N radio)	•	•	•	•
ParkSense® Rear Park Assist ⁶			P	P
Blind Spot Monitoring (BSM) ⁷ with Rear Cross-Path Detection ⁸				P
Electronic Stability Control (ESC) ⁹ with All-Speed Traction Control and Brake Assist	•	•	•	•
Child Seat Anchor System — LATCH-ready	•	•	•	•
Tire Pressure Monitoring System	•	•	•	•
Trailer Sway Control (TSC) ¹⁰	•	•	•	•

POPULAR PACKAGE

Blacktop Package — Includes leather-wrapped shift knob, delete roof rack (SXT only), Black interior accents, fog lamps (SXT only), Black headlamp bezels, rear fascia scuff pad, Black grille, leather-wrapped steering wheel and 17-inch aluminum wheels	•	0
---	---	---

• = Standard. 0 = Optional. P = Package.