



2018 DODGE /// DURANGO /// JOURNEY /// GRAND CARAVAN

DOMESTIC. NOT DOMESTICATED.

**DODGE**



TABLE OF CONTENTS

03 DURANGO

13 JOURNEY

23 GRAND CARAVAN

30 UCONNECT™

32 SAFETY & SECURITY

33 BUYER'S GUIDE

39 DODGE GOODS

40 MOPAR®

For more than 100 years, the Dodge Brand has stood for standing out. We've led by being different. By offering the unexpected, by having a different voice altogether and daring to amplify it. We've stood apart in a sea of look-alike vehicles by championing the un-boring, by having the courage to be different enough to build modern-day marvels that are engineered with more passion,

precision and performance than ever before. Each vehicle in the 2018 Dodge lineup pays homage to its iconic bloodline with award-winning features and detailed craftsmanship. The snarling engines and sleek exteriors of each vehicle beg to be taken out on the open road. It's time to put the pedal to the metal. *THIS IS WHAT IT MEANS TO BE DOMESTIC AND NOT DOMESTICATED.*

### 2018 DODGE DURANGO

How do you know Durango is a Dodge through and through?

It's easy. Compared to the other SUVs, Durango is an outlier.

It's different. It's a Dodge first — and an SUV second. The others cower and let the segment define them, focusing more on simply being utility vehicles rather than *sport* utility vehicles. Not Durango — with its available HEMI® V8 engine, rear-wheel drive and sport suspension, Dodge engineering has transformed this SUV into a seven-seat Charger.\* Durango goes all in with an incredible amount of horsepower capable of pulling an equally incredible towing rating, and plenty of technology to keep you entertained and connected. Durango is an SUV that doesn't need bloodwork in order to tell what's in its DNA: there's no doubt that this is a Dodge.

\*Five-passenger seating standard. Six- and seven-passenger seating available.



////// Durango SRT<sup>®</sup> shown in White Knuckle.

## THE ONLY SUV WITH STREET CRED



**NEW DODGE DURANGO SRT** /// While other manufacturers are trying to figure out how to get more cup holders into their SUVs, we've been busy fortifying ours with more horsepower. This is what it looks like when you combine everything great about Durango and everything extreme about SRT. This is the new 2018 Dodge Durango SRT. The 392 HEMI® V8 engine delivers a staggering 475 horsepower and 470 lb-ft of torque, plus a wicked-fast time on the drag strip: 0 – 60 mph in 4.4 seconds and a National Hot Rod Association (NHRA)-certified quarter-mile cover in 12.9 seconds. Add in an 8-speed performance-tuned transmission, sport-tuned all-wheel drive, high-flow dual exhaust with four-inch outlets, beefy 295 tires on 20- by 10-inch wheels and massive Brembo® brakes and you have one badass people mover.

/// There's comfortable seating available for seven, but the authority of the driver hasn't been ignored — leather-trimmed seats, new electronic T-shifter, launch control and an 8-inch Uconnect® touchscreen radio all come standard.





////// Durango Citadel shown with Anodized Platinum Appearance Package. Apple CarPlay™ screen shown.

Does anyone really believe that one-size-fits-all? We don't. That's why Durango offers 50 seating configurations, available seating for up to seven, available cloth or leather-trim seating and technology that keeps everyone entertained.

## APPLE CARPLAY™ COMPATIBILITY<sup>[1]</sup>

This is smarter iPhone® integration, so you'll experience your favorite features through your dashboard. With Siri<sup>SM</sup> all you have to do is ask — catch up on calls and messages, get directions from Apple Maps, or request a song through Apple Music. The system lets you browse music, or discover nearby gas stations, parking, restaurants and more. Plus, Maps help predict where you're headed.



## ANDROID AUTO™ INTEGRATION<sup>[1]</sup>

For those who know, and love Android<sup>SM</sup>, Google<sup>SM</sup> goes with you with navigation<sup>[1]</sup> and "OK Google" voice detection, you'll hear your favorite Google Play music and get voice-guided navigation<sup>[1]</sup> from Google Maps. Stay focused and productive while on the road with voice controls<sup>[2]</sup> that allow you to make calendar appointments, set timers, reply to emails and messages — and more.

**android**<sup>[1]</sup>  
**auto**

\*All disclaimers and disclosures can be found on page 41.



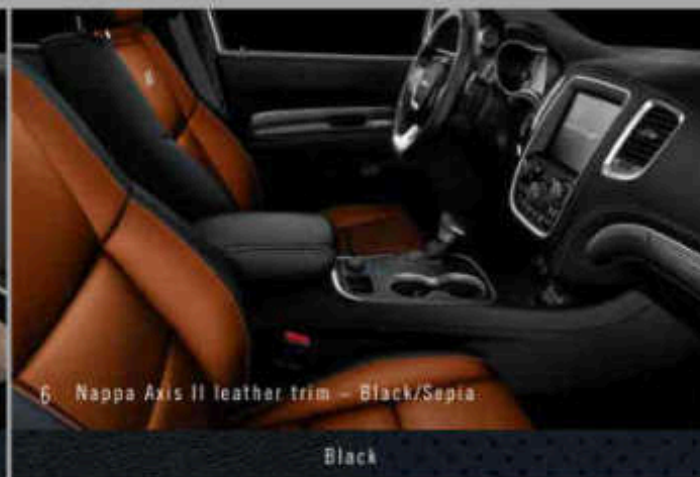
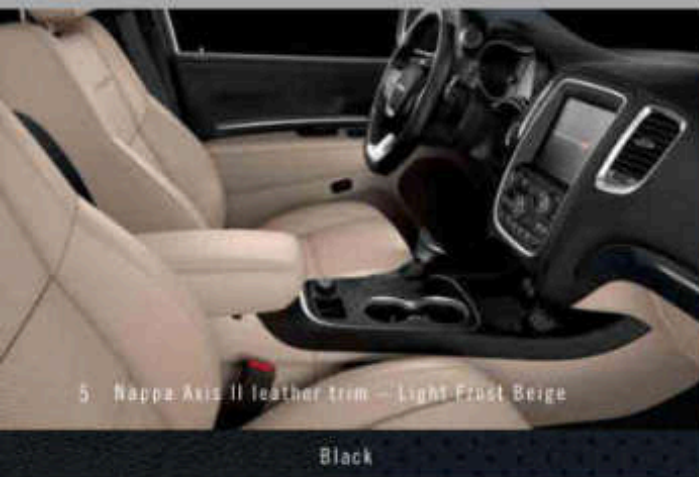
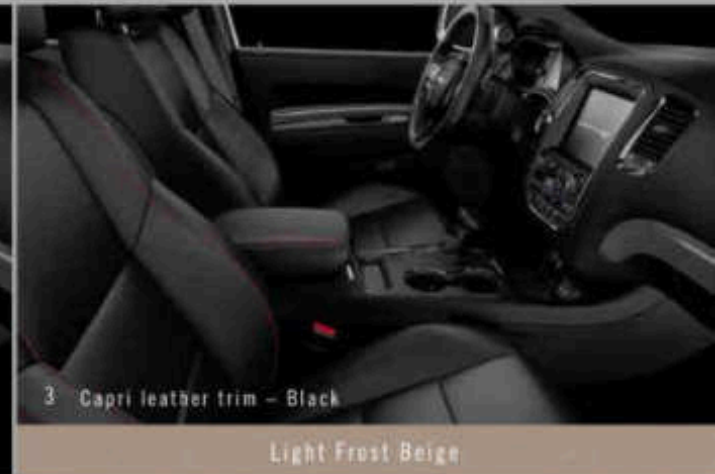


EXCEPTIONAL TOWING

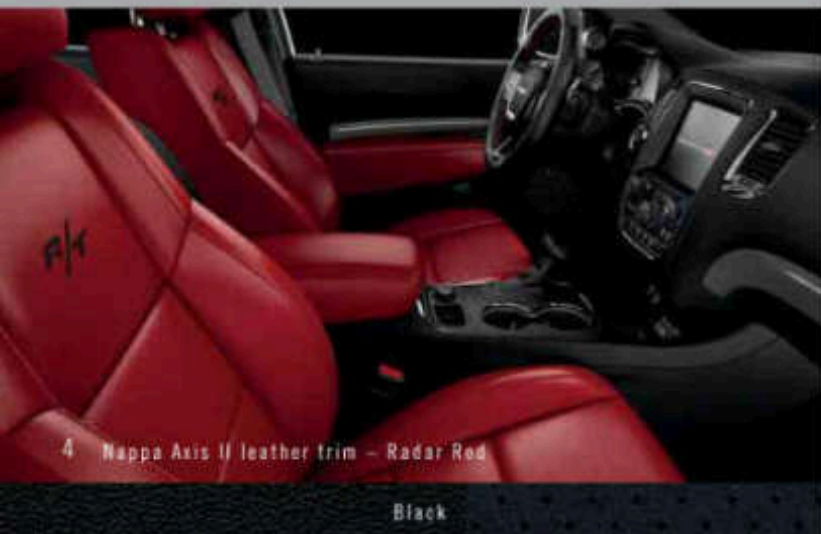
**8,700 LB\***

**ALL-WHEEL DRIVE (AWD)** /// Durango was designed for uncompromising and refined performance even in the worst conditions. Forge on with available AWD. The system helps enhance driver confidence by leveraging the SUV's 50/50 weight distribution. Durango offers two AWD systems — one for the HEMI® V8 engine and one for the Pentastar® V6-powered models — each one greatly enhances the vehicle's traction and handling by delivering a smooth driving experience over a wide range of road conditions.

////// Durango SRT® in Octane Red towing a Dodge Challenger with Drag Pak. \*Properly secure all cargo. \*\*When properly equipped.



MORE INTERIOR CHOICES FEATURED ON THE NEXT PAGE.



4 Nappa Axis II leather trim – Radar Red

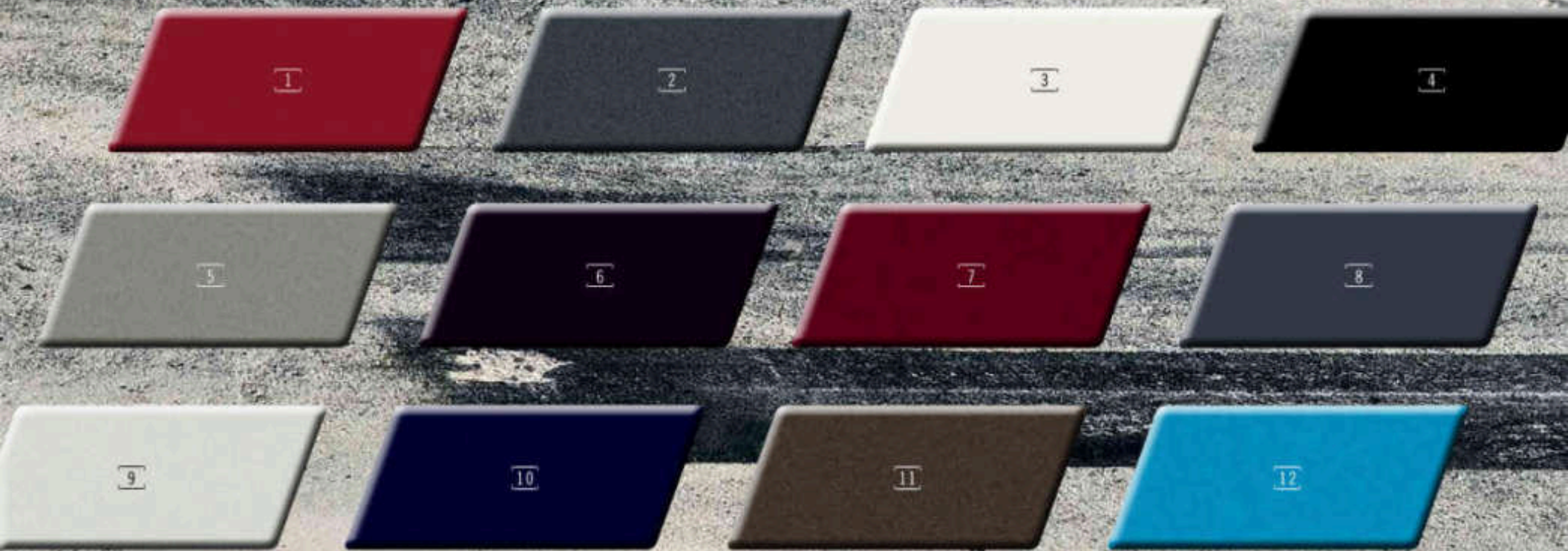
Black



8 Laguna leather with perforated inserts – Black/Demonic Red

## INTERIOR / CHOICES

- 1 /// Double Cross/Carolina cloth in Black (also available in Light Frost Beige) — standard on SXT
- 2 /// Capri leather trim with Axis II perforated suede inserts in Black — standard on GT
- 3 /// Capri leather trim in Black (also available in Light Frost Beige) — available on GT
- 4 /// Nappa Axis II perforated leather trim in Radar Red with Red accent stitching with embroidered R/T logo (also available in Black with Red accent stitching) — standard on R/T
- 5 /// Nappa Axis II perforated leather trim in Light Frost Beige with embroidered Citadel logo (also available in Black with Silver accent stitching) — standard on Citadel
- 6 /// Nappa Axis II perforated leather trim in Black/Sepia with Silver accent stitching and embroidered Dodge Rhombus (also available in Black with Silver accent stitching) — available on Citadel with Anodized Platinum Appearance Package
- 7 /// Nappa leather with Axis II perforated suede inserts and Silver accent stitching in Black — standard on SRT®
- 8 /// Black/Demonic Red Laguna leather with Laguna Axis II perforated inserts and Silver accent stitching — available on SRT



## COLOR:CHOICES

1 Redline Red 2 Granite 3 White Knuckle 4 DB Black 5 Billet 6 In-Violet 7 Octane Red Pearl 8 Bruiser Grey 9 Vice White 10 Blu By You 11 Stout Brown 12 B5 Blue

## WHEEL:CHOICES

1 18-inch Satin Carbon (standard on SXT) 2 20-inch Hyper Black Aluminum (standard on GT) 3 20-inch Low-Gloss Granite Crystal (standard on R/T) 4 20-inch Gloss Black Aluminum (included with Blacktop Package on GT, SXT and R/T) 5 20-inch Polished Aluminum (standard on Citadel) 6 20-inch Brass Monkey (Burnished Bronze; included with Brass Monkey Appearance Package on GT and R/T) 7 20-inch Satin Carbon (included with Anodized Platinum Appearance Package on Citadel and SXT) 8 20 by 10-inch Black Noise (optional on SRT®) 9 20 by 10-inch Black Noise (standard on SRT)





### **2018 DODGE JOURNEY**

There's a reason it's called a road trip and not an arrived-at-your-destination trip. It's because the time and miles spent getting there are what it's really all about. Dodge Journey has the power to make every drive — including the one you make Monday through Friday — feel like a vacation. The power to cut loose comes from available all-wheel drive (AWD) and engine options that are as efficient as they are capable. With standard seven-passenger seating and loads of technology, there's room and entertainment for everyone. It's time to get up and get out, your Journey awaits.

////// Journey SXT shown in Redline 2K with Blacktop Package.

# ESCAPE ARTIST

**ALL-WHEEL DRIVE (AWD) ///** When the weekend's arrived but the forecast calls for foul weather, there's no need to change your plans. The surefootedness of available AWD makes haste of snowy roads, wet highways and lower-traction terrain. When the system senses wheel slippage, it immediately responds with a transfer of power to the rear wheels for a very noticeable uptick in driving performance.

**HAULING ALL-STAR ///** Whether it's a boat, ATV or camping gear you're trailering, Journey's measured muscle easily handles up to 2,500 lb when properly equipped. Standard Trailer Sway Damping<sup>21</sup> helps to maintain control.

**ENGINE OPTIONS ///** 2.4-liter DOHC 16-valve Dual Variable Valve Timing (VVT) engine produces 173 horsepower and up to 25 mpg highway.\* Award-winning 3.6-liter DOHC Pentastar<sup>®</sup> VVT engine mated to a smooth-shifting six-speed automatic delivers 283 horsepower and up to 25 mpg highway.†

Award-winning 3.6-liter DOHC Pentastar<sup>®</sup> VVT engine mated to a smooth-shifting six-speed automatic delivers 283 horsepower and up to 25 mpg highway.†

\*2017 EPA estimated 19 mpg city / 25 mpg highway. Actual mileage may vary. †2017 EPA estimated 17 mpg city / 25 mpg highway (FWD); 16 mpg city / 24 mpg highway (AWD). Actual mileage may vary.



////// Journey GT shown in Billet.



////// Journey GT shown with Black leather trim with perforated inserts and Red accent stitching.



## SHIFT YOUR PERSPECTIVE

This is how you commute in style — Dual-Zone Temperature Control, stadium seating, soft-touch surfaces, available 8.4-inch touchscreen and flexible seven-passenger seating. Opt for an available 10-way power driver seat including four-way power lumbar adjuster, heated front seats and a full-circumference heated steering wheel for optimum luxury.

Accessing the third-row seats is effortless thanks to 90-degree rear-door openings and available Tilt 'n Slide second-row seats.

////// Journey Crossroad shown with Black leather trim with Sport mesh inserts.





## **FLEXIBILITY NEVER LOOKED SO GOOD**

**CARGO AREA** /// A standard hidden storage bin and access door to the tool and jack compartment are located behind the rear seat. When hauling gear is the priority, simply fold down the second- and third-row seats for up to 67.6 cu. ft. of cargo capacity.

**DUAL IN-FLOOR STORAGE** /// The second-row floor provides even more clever storage. Two in-floor storage bins with latching lids can each hold up to a dozen 12-oz cans, plus ice.

For added convenience, these bins have removable, washable liners so they're a snap to clean, and make the perfect tailgating accessory.

**CENTER FLOOR CONSOLE** /// This deep, easy-to-access console features cup holders, 12-volt outlets, remote USB port, auxiliary audio input and out-of-view storage.

**STORAGE POCKETS** /// Found on all four passenger doors, molded storage pockets give you more places to stash your travel items, as well as 20-oz drink containers and more.

**SECOND-ROW INTEGRATED CHILD BOOSTER SEATS<sup>SM</sup>** /// There's no need to fumble with bulky, heavy booster seats anymore. Opt for the integrated child booster seat<sup>SM</sup> and you're good to go.

**REAR CUP HOLDERS** /// Cup holders conveniently located in the rear quarter trim panel accommodate 20-oz drinks or juice boxes. Two more cup holders can be found in the second-row fold-down armrest.



1



2



4



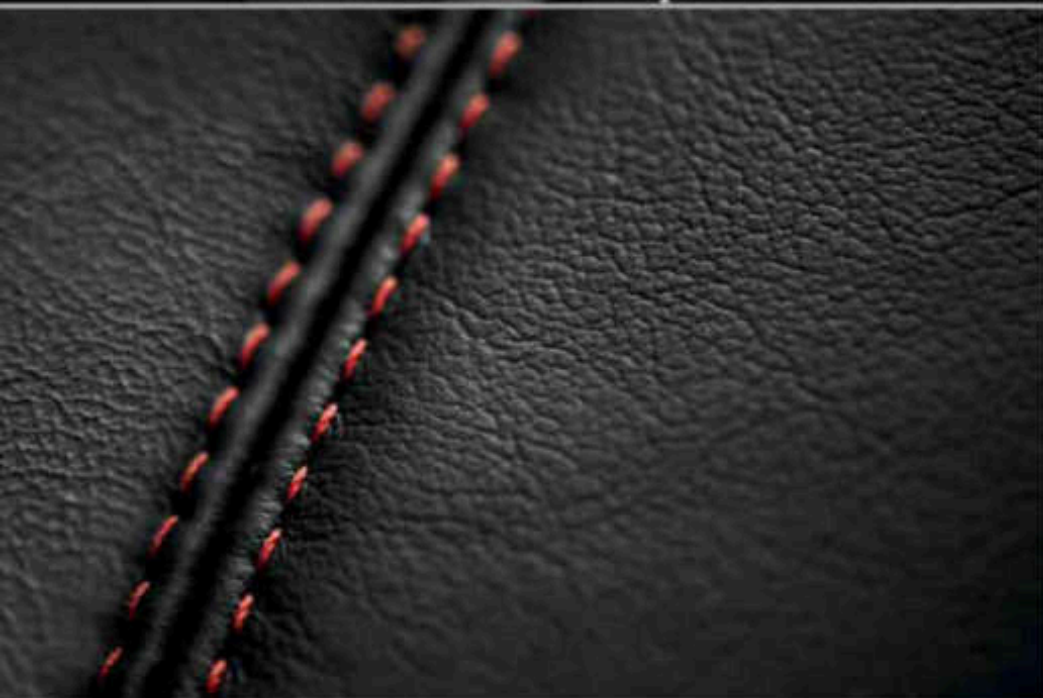
5

**MORE INTERIOR CHOICES FEATURED ON THE NEXT PAGE.**



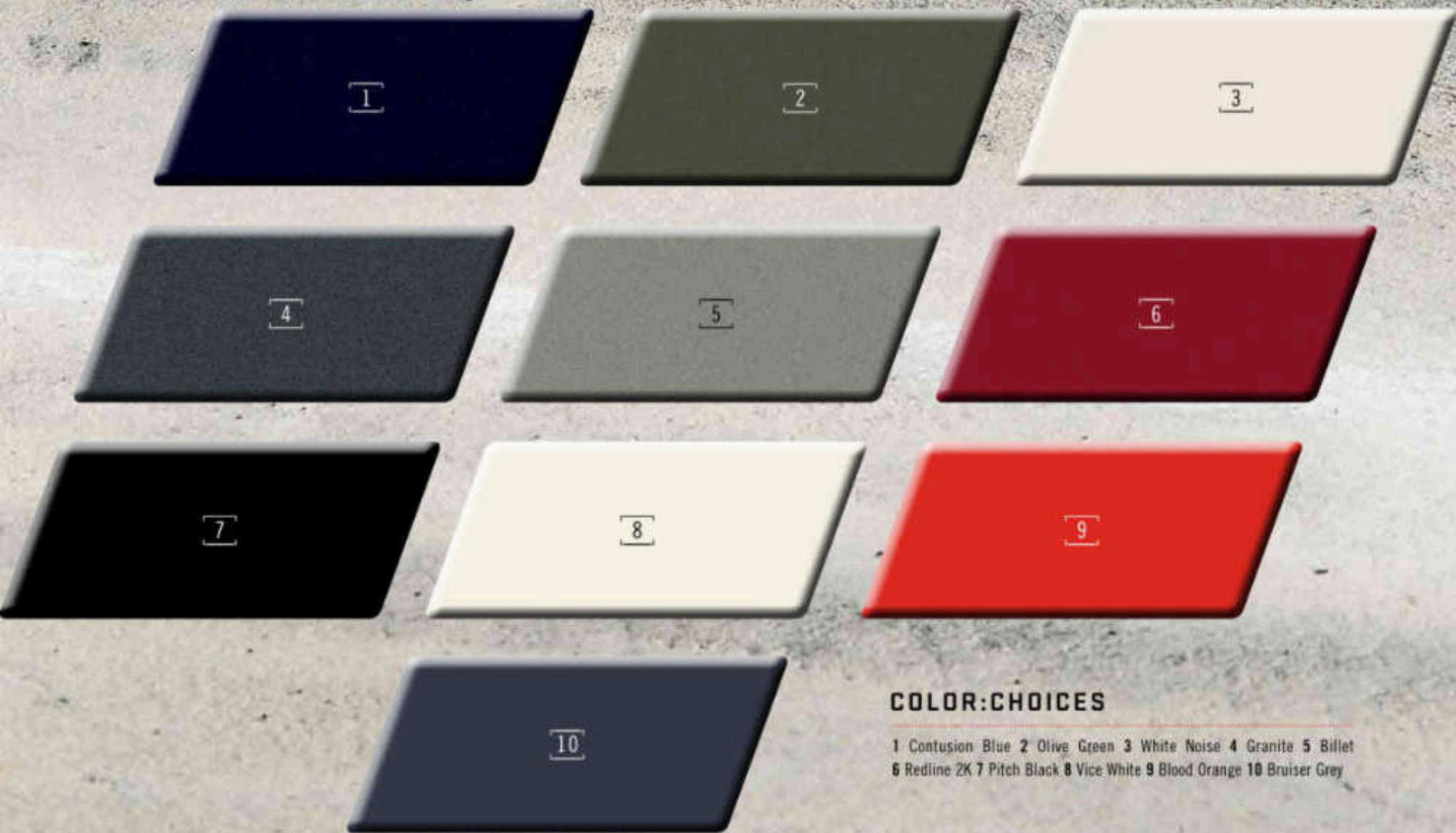
Capri leather trim/Sport mesh inserts - Black

3



## INTERIOR / CHOICES

- 1 /// Strobe/Sedoso cloth in Light Frost Beige — standard on SE and SXT
- 2 /// Strobe/Sedoso cloth in Black — standard on SE and SXT
- 3 /// Capri leather trim in Black with Sport mesh inserts and Light Slate Gray accent stitching — standard on Crossroad
- 4 /// Capri leather trim in Black with Light Slate Gray accent stitching — optional on Crossroad
- 5 /// Capri leather trim in Black with perforated inserts and Red accent stitching — standard on GT



## COLOR:CHOICES

1 Contusion Blue 2 Olive Green 3 White Noise 4 Granite 5 Billet  
6 Redline 2K 7 Pitch Black 8 Vice White 9 Blood Orange 10 Bruiser Grey

## WHEEL:CHOICES

1 17-inch Wheel Cover (standard on SE) 2 17-inch Aluminum (optional on SE)  
3 17-inch Tech Silver Aluminum (standard on SXT) 4 19-inch Tech Silver Aluminum (optional on SXT) 5 17-inch Aluminum with Black pockets (included with SE Blacktop Package) 6 19-inch Black Noise Aluminum (standard on Crossroad)  
7 19-inch Satin Carbon Aluminum (standard on GT) 8 19-inch Gloss Black Aluminum (included with Blacktop Package on SXT and GT) 9 19-inch Chrome-clad Aluminum (included with Chrome Appearance Group on SXT)



# THE ULTIMATE GRAND OPENING



## 2018 DODGE GRAND CARAVAN

It's hard to remember what life was like before satellites bounced 160 channels into our homes, meals could be cooked within minutes and the World Wide Web could be accessed from the palm of our hand. It's also hard to remember what life was like before Dodge created the first minivan more than 30 years ago. But once built, families flocked. Weekend warriors arrived. Small business owners lined up. Today, Grand Caravan powers forward by offering drivers unlimited versatility and more than 55 standard and available safety, security and technology features. It holds a bounty of premium features and the latest technology. But most importantly, it holds the confidence of families, their hobbies and their livelihoods. In our opinion, nothing tops this original.

////// Grand Caravan SXT Blacktop shown in Billet



Properly secure all cargo.

CONTINUED ON THE NEXT PAGE.

## STOW 'N GO<sup>SM</sup>: THE SURPRISE INSIDE

When you think minivan, you think flexible seating, tons of storage, cup holders that accommodate juice boxes and available dual power sliding side doors. But superior craftsmanship, comfort and luxury? Well that's Grand Caravan putting the cherry on top of your people-hauling sundae.

1 /// Third-row Stow 'n Go floor storage

2 /// Available second-row Captain's Chairs

3 /// Available premium Super Console

4 /// Grand Caravan SE shown with Light Graystone cloth interior with optional equipment

5 /// Grand Caravan SXT shown with optional equipment

6 /// Available second-row Super Stow 'n Go in-floor storage

5

6

Properly secure all cargo.



Hudson cloth - Black

1

Light Graystone



Hudson cloth - Light Graystone

2



Torino leather trim - Black

3

Light Graystone



Torino leather trim - Black

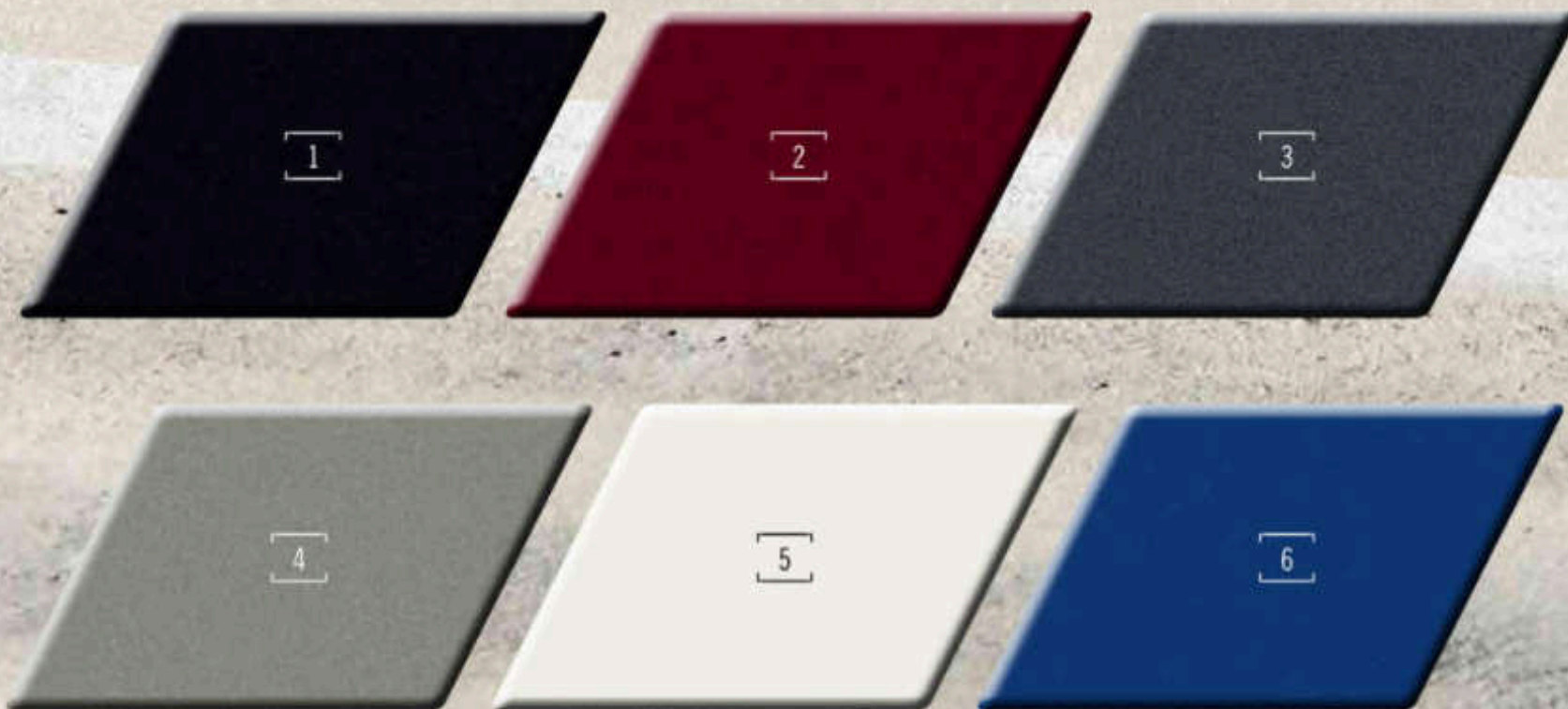
4

INTERIOR INFORMATION ON THE NEXT PAGE.



## INTERIOR / CHOICES

- 1 /// Hudson cloth in Black (also available in Light Graystone) — standard on SE, SE Plus; SE Plus includes Silver accent stitching
- 2 /// Hudson cloth in Light Graystone — standard on SE
- 3 /// Torino leather trim in Black with Axis perforated suede inserts and Silver accent stitching (also available in Light Graystone) — standard on SXT; included with Blacktop Package on SXT
- 4 /// Torino leather trim in Black with Axis perforations and Red accent stitching — standard on GT



## COLOR:CHOICES

1 Black Onyx 2 Octane Red 3 Granite 4 Billet 5 White Knuckle 6 Indigo Blue

## WHEEL:CHOICES

1 17-inch Wheel Cover (standard on SE) 2 17-inch Aluminum painted Tech Silver (standard on SXT) 3 17-inch Polished Aluminum with Gloss Black pockets (standard on SE Plus and GT; included with Blacktop Package on SXT)



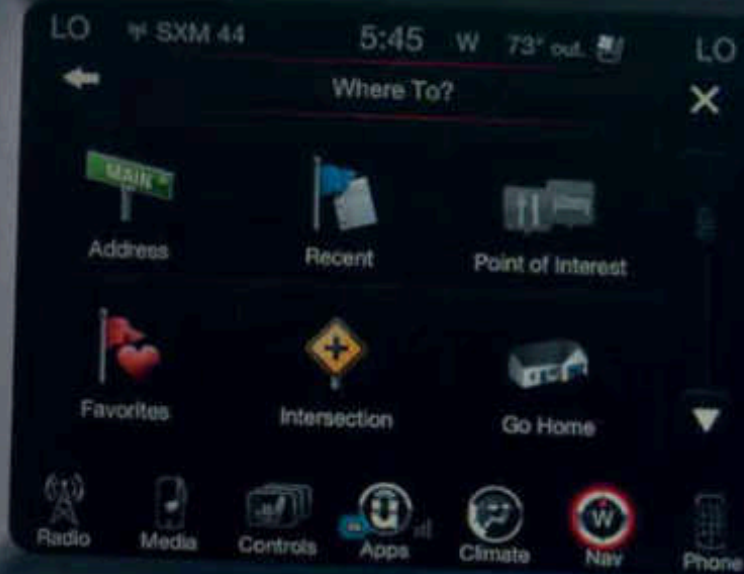
Uconnect

## HERE'S WHAT YOU CAN DO.

REMAIN FOCUSED ON THE ROAD WITH YOUR HANDS ON THE WHEEL, WHILE YOU COMMUNICATE, NAVIGATE AND STAY ENTERTAINED.

/// **LISTEN** to music, talk shows and sports. Access all genres, favorite artists, winning teams — all the time with SiriusXM® Satellite Radio™. /// **DISCOVER** new places, find the best shopping, dancing, entertainment venues and restaurants. /// **SPEAK UP** and be heard, send and receive calls and texts™ while driving safely with hands-free phone capability™. /// **NAVIGATE**™ to every adventure, get turn-by-turn directions so you don't get lost on the way (unless you want to). /// **START** your car from afar, get your engine running, unlock your door or flash your headlamps from almost anywhere using your smartphone. /// **SEE** into the future, hear weather and traffic reports™ with a five-year trial subscription to SiriusXM Travel Link™ and SiriusXM Traffic™.

\*Additional charges may apply.





uconnect

**SiriusXM**  
SATELLITE RADIO

FIND OUT MORE AT [DRIVEDCONNECT.COM](http://DRIVEDCONNECT.COM)

## SAFETY & SECURITY FEATURES

**PARKSENSE® REAR PARK ASSIST™** // // // When your vehicle is in Reverse, this system can sense objects moving at low speeds; if imminent collision is detected, the system will provide a momentary, autonomous brake pulse. In certain circumstances, this system can help bring your vehicle to a stop. (Available on Durango.) For Journey and Grand Caravan, this available system detects objects within 6.5 feet of the backup pathway and provides both an audible chime and visual warning.

**RAIN BRAKE SUPPORT** // // // When your windshield wipers have been activated, the system pulses the brake pads closer to the spinning rotors, helping to keep the rotors and pads dry for greater control and operator security. Standard on Durango.

**BLIND SPOT MONITORING (BSM)<sup>TM</sup> WITH REAR CROSS-PATH DETECTION<sup>TM</sup>** // // // Radar continually monitors rear vehicle blind zones and will visually and audibly alert you when a vehicle is sensed in any of the zones. When the vehicle is in Reverse, rear sensors warn through a chime if cross-traffic approaches the vehicle. Available on Durango and Grand Caravan.

**ADAPTIVE CRUISE CONTROL (ACC)<sup>TM</sup> WITH STOP** // // // Helps maintain driver-selected distance from the vehicle ahead; under certain traffic conditions, the system can bring the vehicle to a full stop without driver intervention. Available on Durango.

**FORWARD COLLISION WARNING (FCW)<sup>TM</sup> WITH ACTIVE BRAKING** // // // Forward-facing radar sensors detect when your vehicle may be approaching another object too rapidly and the system alerts the driver with both an audible chime and a visual warning. Available on Durango.

**PARKVIEW® REAR BACK-UP CAMERA<sup>SM</sup>** // // // This system displays an accurate visual reference of what is behind your vehicle when it's in Reverse. Standard on Durango and Grand Caravan. Available on Journey.

**READY ALERT BRAKING (RAB)** // // // The system anticipates situations when you may initiate an emergency brake stop and uses the Electronic Stability Control (ESC)<sup>SM</sup> pump to precharge the brake system in order to decrease the time required for full brake application. Standard on Durango.

**ELECTRONIC STABILITY CONTROL (ESC)<sup>SM</sup>** // // // This system is designed to assist you in maintaining control of your vehicle during extreme steering maneuvers. ESC<sup>SM</sup> senses when a vehicle is starting to spin (oversteer) or plow (understeer), and attempts to correct the vehicle's course by automatically controlling the throttle and applying the brakes at individual wheels. Standard on Durango, Journey and Grand Caravan.

**ALL-WHEEL DRIVE (AWD)** // // // A system that automatically detects wheel-slip and sends additional power to the wheel(s) with the most traction. Available on Durango and Journey.

**ANTILOCK BRAKE SYSTEM (ABS)** // // // Standard four-wheel antilock disc brakes sense and prevent wheel lockup, offering improved steering control under extreme braking and/or slippery conditions. Standard on Durango, Journey and Grand Caravan.



# /// BUYER'S GUIDE – DURANGO

## ENGINES AND TRANSMISSIONS

	SXT	GT	R/T	CITADEL	SRT
3.6L Pentastar® V6 Variable Valve Timing (VVT) with 8-speed Automatic	P	•	•	•	•
5.7L HEMI® V8 with Multi-Displacement System and VVT with 8-speed Automatic	P	•	•	•	•
6.4L HEMI V8 with 8-speed Automatic	P	•	•	•	•

## MECHANICAL FEATURES

	SXT	GT	R/T	CITADEL	SRT
<b>BRAKES</b> — Antilock 4-wheel disc	•	•			
— Antilock 4-wheel disc HD			•	•	
— Antilock 4-wheel disc performance					•
<b>EXHAUST SYSTEM</b> — Single rear on right side with bright tip (packaged with 3.6L V6 engine)	•				
— Dual rear with bright tips (packaged with 5.7L HEMI V8, Blacktop Package or Anodized Platinum Appearance Package)	P	•	•	•	
— Performance exhaust with dual rear bright 4-inch tips					•
<b>SUSPENSIONS</b> — Eco III	•	•		•	
— Normal-duty (on All-Wheel Drive (AWD) only)	•	•		•	
— Rear load-leveling (packaged with Trailer Tow Group IV or Trailer Tow Group)	P	P	•	P	
— Sport — Lowered ride height for enhanced handling			•		
— High-Performance and Adaptive-Damping					•
<b>TRANSFER CASE/ALL-WHEEL-DRIVE SYSTEM</b> — Single-speed, full-time AWD includes MP110 transfer case	•	•		•	
— 2-speed, active on-demand AWD (packaged with 5.7L V8 engine, AWD models only)			•	P	
— Performance-tuned AWD					•

## EXTERIOR FEATURES

	SXT	GT	R/T	CITADEL	SRT
<b>FASCIAS</b> — Body-color with accent-color lower, with bright insert	•				
— Body-color front and rear (packaged with Blacktop Package)	P	•			
— Body-color performance front fascia			•	•	
— Platinum front/rear (packaged with Anodized Platinum Appearance Package)	P			P	
— Body-color/bright inserts and appliqué				•	
— Body-color upper/lower, rear fascia					•
<b>GRILLE</b> — Body-color/accent-color (packaged with Blacktop Package)	P	•			
— Body-color with accents			•	•	
— Bright/accent-color	•				
— Bright premium				•	
— Gloss Black (packaged with Blacktop and Brass Monkey Packages)		P	P		
— Platinum (packaged with Anodized Platinum Appearance Package)	P			P	
<b>LIFTGATE</b> — Power, with key fob, overhead console and rear cargo-area controls (packaged with Popular Equipment Group)	P	•	•	•	•
<b>MIRRORS</b> — Chrome, multifunction with memory, heating element, auto-dimming for driver's-side, supplemental turn signal				•	
— Body-color, power, manual foldaway with heating element	•				

## EXTERIOR FEATURES (continued)

	SXT	GT	R/T	CITADEL	SRT
— Body-color, multifunction with heating element, auto-dimming driver's-side, supplemental turn signals and memory		•	•		•
— Gloss Black, multifunction with heating element, auto-dimming driver's-side, supplemental turn signals and memory (packaged with Blacktop Package)	P	P	P		
— Chrome, power, manual foldaway with heating element				•	
— Platinum, multifunction with memory, heating element, auto-dimming driver's-side and supplemental turn signal (packaged with Anodized Platinum Appearance Package)				P	
<b>REMOTE START SYSTEM</b> — Control integrated into key fob, radio frequency system with 300-ft range		•	•	•	•
<b>ROOF RAILS</b> — Bright side, with integrated, storable crossrails (packaged with SXT Plus)	P			•	
— Black side (packaged with Premium Group, Cargo Plus Group or Anodized Platinum Appearance Package)		P	P	P	P
<b>SUNROOF</b> — Power with express-open/close and comfort-stop features (packaged with Premium Group)	O	P	O	•	O
<b>WHEEL LIP MOLDINGS</b> — Accent-color	•				
— Body-color		•	•	•	•
<b>WIPER SYSTEM</b> — Front, rain-sensing automatic feature (included with the Safety/Security & Convenience Group or Technology Group)		P	•	•	•
— Front, speed-sensitive, variable/intermittent with 1-gallon fluid capacity	•	•			
— Rear, with fixed intermittent and continuous speeds, with washer	•	•	•	•	•

## INTERIOR FEATURES

	SXT	GT	R/T	CITADEL	SRT
<b>7-INCH THIN FILM TRANSISTOR (TFT) RECONFIGURABLE DIGITAL GAUGE CLUSTER</b>	•	•	•	•	•
<b>CARGO AREA</b> — Cargo compartment cover (packaged with Safety/Security & Convenience Group, Cargo Plus Group and Anodized Platinum Appearance Package on Citadel)		P	P	P	P
<b>CONSOLE</b> — Full-length front floor console	•	•	•	•	•
— 2 <sup>nd</sup> -row mini floor console with cup holders and storage; also includes a floor mat for the 3 <sup>rd</sup> -row (packaged with 2 <sup>nd</sup> -row Fold-and-Tumble Captain's Chairs)	P	P	P	P	P
— 2 <sup>nd</sup> -row floor console (requires 2 <sup>nd</sup> -row Fold-and-Tumble Captain's Chairs)	O	O	O	O	O
<b>SEATS</b> — 1 <sup>st</sup> -row, manual adjust	•				
— 1 <sup>st</sup> -row, 8-way power driver's seat with memory (packaged with Comfort Seating Group)	P				
— 1 <sup>st</sup> -row, passenger forward fold-flat seat (not available with Blu-ray™ system on GT and R/T)	•	•	•		
— 1 <sup>st</sup> -row, power 4-way driver's lumbar adjuster (packaged with Comfort Seating Group)	P				
— 1 <sup>st</sup> -row, power 8-way driver's seat with memory, 8-way power passenger seat	•				
— 1 <sup>st</sup> -row, power driver/passenger 4-way lumbar adjust	•	•	•	•	•
— 1 <sup>st</sup> -row, power 8-way driver and passenger seats; driver's seat includes memory feature (packaged with Blu-ray/DVD Rear Entertainment System)	P	•	•	•	•
— 1 <sup>st</sup> -row, heated (packaged with Popular Equipment Group; also includes heated steering wheel)	P	•	•	•	•
— 1 <sup>st</sup> -row, ventilated			•	•	•
— 2 <sup>nd</sup> -row, 60/40 Fold-and-Tumble 3-passenger bench, folding (packaged with 3 <sup>rd</sup> -Row Seating Group)	P	•	•	•	
— 2 <sup>nd</sup> -row, heated		•	•	•	•
— 2 <sup>nd</sup> -row, 60/40 split-folding seats (packaged with Lightweight Performance Package)	•				P

	SXT	GT	R/T	CITADEL	SRT*
<b>INTERIOR FEATURES (continued)</b>					
— 2 <sup>nd</sup> -row, Fold-and-Tumble Captain's Chairs (packaged with Anodized Platinum Appearance Package)	0	0	0	0/P	0
— 3 <sup>rd</sup> -row, 50/50 split-folding (packaged with 1 <sup>st</sup> -Row Seating Group)	P	•	•	•	•
STEERING WHEEL — Heated (packaged with heated front seats)	P	•	•	•	•
— Perforated leather-wrapped, with controls for audio, speed, Electronic Vehicle Information Center, voice-recognition and Adaptive Cruise Control (ACC) <sup>(1)</sup> (if equipped)	•	•	•	•	•
— Power tilt/telescoping steering column (included with Safety/Security & Convenience Group)		P	•	•	•
— Tilt/telescoping steering column	•	•			
— Premium leather-wrapped steering wheel					•
<b>UCONNECT®/MULTIMEDIA</b>					
CD PLAYER — Single-disc, remote (optional on CPO5 27B; requires Uconnect 8.4)	0	0	0	0	0
Media Hub — Includes 2 USB ports and auxiliary jack	•	•	•	•	•
SiriusXM® Satellite Radio <sup>(2)</sup> — Includes 1-year trial subscription (optional with Uconnect 7.0)	P	•	•	•	•
POWER OUTLET — 12-volt power outlet in console (packaged with 2 <sup>nd</sup> -row console with armrest and storage)		P	P	P	P
— 2 12-volt outlets, located on the instrument panel and in the rear cargo compartment	•	•	•	•	•
— 115-volt auxiliary power outlet		•	•	•	•
RADIOS — Uconnect 7.0	•	•			
— Uconnect 8.4 NAV (packaged with Premium Group)		P	•	•	•
SIRIUSXM TRAFFIC PLUS <sup>(3)</sup> — Includes 3-year trial subscription (packaged with 8.4 NAV radio, requires SiriusXM Satellite Radio <sup>(2)</sup> )		P	•	•	•
SIRIUSXM TRAVEL LINK <sup>(3)</sup> — Includes 5-year trial subscription (packaged with 8.4 NAV radio, requires SiriusXM Satellite Radio <sup>(2)</sup> )		P	•	•	•
SPEAKERS — Alpine® Premium Audio System with 9 speakers, subwoofer and 506-watt amplifier				•	
— BeatsAudio® Premium Sound System (packaged with Premium Group or Premium Entertainment Group)		P	•	P	•
— Alpine Audio System with 6 speakers	•	•			
USB PORT — Charging port located in console (packaged with 2 <sup>nd</sup> -row console with armrest)		P	P	P	P
— Dual remote – charge only		•	•	•	•
<b>SAFETY &amp; SECURITY</b>					
ACTIVE HEAD RESTRAINTS <sup>(4)</sup>	•	•	•	•	•
ADAPTIVE CRUISE CONTROL (ACC) <sup>(1)</sup> WITH STOP (packaged with Technology Group)		P	P	P	P
ADVANCED BRAKE ASSIST (packaged with Technology Group)		P	P	P	P
AIR BAGS <sup>(5)</sup> — Advanced multistage, driver and front-passenger <sup>(6)</sup>	•	•	•	•	•
— Supplemental side-curtain <sup>(6)</sup> (all rows)	•	•	•	•	•
— Supplemental side <sup>(6)</sup>	•	•	•	•	•
— Driver inflatable knee bolster <sup>(6)</sup>	•	•	•	•	•
— Supplemental front-seat side <sup>(6)</sup>	•	•	•	•	•
BLIND SPOT MONITORING (BSM) <sup>(7)</sup> AND REAR CROSS-PATH DETECTION <sup>(8)</sup> — Packaged with Safety/Security & Convenience Group or Technology Group		P	P	P	P

	SXT	GT	R/T	CITADEL	SRT
<b>SAFETY &amp; SECURITY (continued)</b>					
ELECTRONIC STABILITY CONTROL (ESC) <sup>(9)</sup>	•	•	•	•	•
FORWARD COLLISION WARNING (FCW) <sup>(10)</sup> WITH ACTIVE BRAKING — Packaged with Technology Group		P	P	P	P
HILL START ASSIST	•	•	•	•	•
KEYLESS ENTER 'N GO <sup>(11)</sup>	•	•	•	•	•
LANESENSE <sup>(12)</sup> LANE DEPARTURE WARNING (LDW) SYSTEM <sup>(13)</sup> — Packaged with Technology Group		P	P	P	P
PARKSENSE <sup>(14)</sup> REAR PARK ASSIST SYSTEM <sup>(15)</sup>	P	•	•	•	•
PARKSENSE FRONT PARK ASSIST SYSTEM <sup>(16)</sup>			•	•	•
PARKVIEW <sup>(17)</sup> REAR BACK-UP CAMERA <sup>(18)</sup>	•	•	•	•	•
RAIN BRAKE SUPPORT	•	•	•	•	•
READY ALERT BRAKING	•	•	•	•	•
SECURITY ALARM		•	•	•	•
TRAILER SWAY CONTROL	•	•	•	•	•
<b>SELECT PACKAGES/EQUIPMENT GROUPS</b>					
ANODIZED PLATINUM APPEARANCE PACKAGE — Includes 2 <sup>nd</sup> -row Fold-and-Tumble Captain's Chairs, leather-trimmed seats, Dinamica soft-touch headliner, hand-wrapped dash with accent stitching, Black roof rails, Platinum door handles, Platinum mirror caps, Platinum interior accents/steering-wheel bezels, Platinum fog lamp bezels, Platinum rear lower fascia, Platinum accents on sill, Platinum front fascia, Platinum grille surround/texture and 20-inch Satin Carbon wheels (available in Black or Black/Septa leather interior)					0
BLACKTOP PACKAGE — Includes Gloss Black badging, Gloss Black grille, Gloss Black mirror caps (R/T does not include Gloss Black grille)	0	0	0		
BLU-RAY™/DVD REAR ENTERTAINMENT SYSTEM — Power 8-way driver memory and 8-way passenger seats, 2 screens mounted in the seatbacks, capable of playing both DVDs and Blu-ray Discs, includes separate ports for plugging in video games or other devices (packaged with Premium Entertainment Group)		0	0	P	0
BRASS MONKEY PACKAGE — Includes Gloss Black badging, Gloss Black grille and 20-inch Brass Monkey wheels		0	0		
LIGHTWEIGHT PERFORMANCE PACKAGE — Includes 3 <sup>rd</sup> -row delete, 2 <sup>nd</sup> -row 60/40 folding seat and 5-passenger seating					0
PREMIUM ENTERTAINMENT GROUP — Includes Blu-ray/DVD Rear Entertainment Center and BeatsAudio Premium Audio System (not available with single-disc remote CD player)				0	
SAFETY/SECURITY & CONVENIENCE GROUP — Includes cargo compartment cover, rain-sensing windshield wipers, Auto High-Beam Headlamp Control, low-beam High Intensity Discharge headlamps and automatic headlamp-leveling, power tilt/telescoping steering column, BSM <sup>(7)</sup> and Rear Cross-Path Detection <sup>(8)</sup> Systems		0			
SRT INTERIOR PACKAGE — Includes real carbon fiber interior accents,* premium wrapped instrument panel, Dinamica soft-touch headliner and accent paint on speaker trim rings					0
TECHNOLOGY GROUP — Includes ACC <sup>(1)</sup> with Stop, FCW <sup>(10)</sup> with Active Braking, Advanced Brake Assist, LaneSense LDW <sup>(12)</sup> with Lane Keep Assist, BSM <sup>(7)</sup> and Rear Cross-Path Detection <sup>(8)</sup> Systems (GT includes rain-sensing windshield wipers)		0	0	0	0
TRAILER TOW GROUP IV — Includes 220-amp alternator if 5.7L V8, heavy-duty engine oil cooler if 5.7L V8, Class IV hitch receiver, 4-/7-pin wiring harness, rear load-leveling shocks and full-size spare tire	0	0	0	0	0

• = Included, 0 = Optional, P = Available within Package noted, \*Late availability,

# /// BUYER'S GUIDE – JOURNEY

## ENGINES AND TRANSMISSIONS

	SE	SXT	CROSSROAD	GT
2.4L Tigershark® MultiAir®2 DOHC 16V Variable Valve Timing (VVT) I4, 4-speed Automatic Variable Line-Fluid Pressure (VLP) Transmission (Front-Wheel Drive (FWD) only)	•	•	•	
3.6L 24V Pentastar® VVT V6, 6-speed Automatic 62TE Transmission	0 <small>(AWD ONLY)</small>	0	0	•

## MECHANICAL FEATURES

	SE	SXT	CROSSROAD	GT
ALL-WHEEL-DRIVE (AWD) SYSTEM (requires 3.6L V6 and 6-speed transmission)	0	0	0	0
ENGINE BLOCK HEATER	0	0	0	0
FUEL TANK — 20.5-gallon (FWD only)	•	•	•	•
— 21.1-gallon (AWD only)	•	•	•	•
REMOTE START SYSTEM — Included with Popular Equipment Group			P	•
SPEED CONTROL	•	•	•	•
SUSPENSION — High-performance				•
— Normal-duty (FWD only)	•	•		
— Performance (AWD only)	•	•	•	
— Towing (Included with Blacktop Package on SXT regardless of engine) (FWD only)		P	•	

## EXTERIOR FEATURES

	SE	SXT	CROSSROAD	GT
DOOR HANDLES — Body-color	•	•	•	•
— Bright (included with Chrome Appearance Group)		P		
EXHAUST TIPS — Dual, bright (included with 3.6L V6 engine)		P	P	P
HEADLAMPS — Automatic	•	•	•	•
— Daytime running lamps (DRLs)	•	•	•	•
— Fog lamps		•	•	•
— Headlamps-off time delay	•	•	•	•
MIRRORS — Black, foldaway, power, heated	•			
— Body-color, foldaway, power, heated		•	•	•
ROOF RACK — Side rails, Black (included with Blacktop Package on GT)	•	•		D/P
— Side rails, Platinum Chrome			•	
— Side rails, Bright Chrome (included with Chrome Appearance Group)		P		
TAILLAMPS — LED (standard on AWD SE only)	•	•	•	•
TIRES — P225/55R19 BSW All-Season Tearing (packaged with WFN, WPX or WPI wheels on SXT)		P	•	•
— P225/65R17 BSW All-Season Tearing	•	•		
— Spare, compact	•	•	•	•
WIPERS — Variable/intermittent windshield and rear window	•	•	•	•

## INTERIOR FEATURES

	SE	SXT	CROSSROAD	GT
AIR CONDITIONING — Dual-Zone manual temperature control	•	•		
— Dual-Zone Automatic Temperature Control (ATC) with humidity sensor			•	•

## INTERIOR FEATURES (continued)

	SE	SXT	CROSSROAD	GT
— 3-Zone manual temperature control (included with Popular Equipment Group)	P	P		
— 3-Zone ATC with humidity sensor (included with Premium Sound Group, Navigation & Back-Up Camera Group)			P	P
ASSIST HANDLE — Front-passenger (included with Popular Equipment Group, ATC or 3-Zone manual temperature control)	P		•	•
CARGO NET			•	•
CONSOLE — Full-length floor	•	•	•	•
— Overhead with interior observation mirror, sunglasses holder and trip computer with temperature and compass (included with Popular Equipment Group, ATC or 3-Zone manual temperature control)	P		P	•
DEFROSTER — Rear window	•	•	•	•
ELECTRONIC VEHICLE INFORMATION CENTER (EVIC)	•	•	•	•
INTERIOR ACCENTS — Base door trim panel	•	•		
— Premium door trim panel with accent stitching			•	
— Premium door trim panel				•
LATCH — Child Seat Anchor System	•	•	•	•
LIGHTING — Driver and front-passenger footwell LED lamps	•	•	•	•
— Front and rear swiveling LED lamps (included with ATC or 3-Zone air conditioning)			•	•
— Front courtesy/map lamps	•	•	•	
MIRRORS — Rearview manual day/night	•	•		
— Rearview, auto-dimming with microphone (included with Uconnect® Voice Command™)	P	P	•	•
— Interior observation (included with Popular Equipment Group and Premium Group)	P	P	•	•
POWER ACCESSORIES — 12-volt, auxiliary	•	•	•	•
— 12-volt, DC, front and rear	•	•	•	•
— 12-volt, in center console	•	•	•	•
— 115-volt auxiliary outlet				•
SHIFT KNOB — Leather-wrapped (included with Popular Equipment Group, Premium Group and Uconnect Voice Command™)	P	P	•	
— Dimpled leather-wrapped				•
STEERING COLUMN — Tilt/telescoping	•	•	•	•
STEERING WHEEL — Mounted audio controls	•	•	•	•
— Leather-wrapped (included with Popular Equipment Group, Premium Group and Uconnect Voice Command™)	P	P	•	
— Heated (included with heated front seats, leather-trimmed bucket seats and Popular Equipment Group)			P	•
— Dimpled leather-wrapped				•
STORAGE — 2 <sup>nd</sup> -row in-floor bins	•	•	•	•
SUNROOF — Power with express-open/close			0	0

• = Included, 0 = Optional, P = Available within Package noted.

	SE	SXT	CROSSROAD	GT
--	----	-----	-----------	----

### INTERIOR FEATURES (continued)

UNIVERSAL GARAGE DOOR OPENER <sup>TM</sup> — Included with Navigation & Back-Up Camera Group, Driver's Convenience Group, Premium Sound Group and Popular Equipment Group			P	P
VISORS — Driver's-side sun with mirror	•	•		
— Passenger-side	•	•		
— Driver's-side and front-passenger sun with illuminated vanity mirrors (included with Popular Equipment Group, Automatic Temperature Control (ATC) air conditioning and 3-Zone manual temperature control on Crossroad)	P		P	•
WINDOWS — Power front with driver's 1-touch down	•	•	•	
— Power front 1-touch up/down				•

### SEATS

FRONT — Manual driver's height adjuster (included with *E5 seat)	P	P		
— Power 4-way driver's lumbar adjuster (included with power driver's seat or Premium Group)		P	P	P
— Power 6-way driver's (included with Premium Group)		P	•	•
— Heated (included with *HL and *AL seats and Popular Equipment Group)			P	•
2 <sup>ND</sup> -ROW — Easy Entry 40/60 Tilt 'n Slide with recline	•	•	•	•
— With 2 child boosters <sup>1)</sup>	0	0	0	0
3 <sup>RD</sup> -ROW — 50/50 fold-flat with recline	•	•	•	•

### UCONNECT<sup>®</sup>/MULTIMEDIA

RADIO — Radio 4.3: 4.3-inch touchscreen, AM/FM radio, audio jack input and remote USB port	•	•		
— Radio 4.3: 4.3-inch touchscreen, AM/FM radio, SiriusXM <sup>®</sup> Satellite Radio <sup>TM</sup> CD player, MP3/WMA, audio jack input and remote USB port (included with Premium Group)	0	0/P		
— Radio 8.4: 8.4-inch touchscreen, AM/FM radio, SiriusXM Satellite Radio <sup>TM</sup> CD/DVD player, MP3/WMA/AAC, audio jack input and remote USB port			•	•
— Radio 8.4 NAV: 8.4-inch touchscreen, AM/FM radio, SiriusXM Satellite Radio <sup>TM</sup> CD/DVD player, MP3/WMA/AAC, audio jack input, remote USB port, Uconnect Voice Command <sup>SM</sup> Bluetooth <sup>®</sup> Streaming Audio, hands-free texting <sup>2)</sup> and preprogrammed response, Navigation <sup>SM</sup> with audible turn-by-turn directions, Points-of-Interest (POI), Lane Guidance, and SiriusXM Traffic <sup>SM</sup> and SiriusXM Travel Link <sup>SM</sup> (included with Navigation & Back-Up Camera Group)			P	P
SIRIUSXM SATELLITE RADIO <sup>SM</sup> — Includes 1-year trial subscription (included with Premium Group or REB, RE2 and RB5 radios)	P	P	P	P
SPEAKER SYSTEMS — 6	•	•	•	
— 6 premium, subwoofer and 368-watt amplifier (included with Rear-Seat Video Group I and Premium Sound Group)			P	•
UCONNECT VOICE COMMAND <sup>SM</sup> WITH BLUETOOTH — Included with RB5 Radio, includes auto-dimming rearview mirror with microphone	0	0/P	•	•

### SAFETY & SECURITY

ACTIVE HEAD RESTRAINTS <sup>3)</sup> — Front seats	•	•	•	•
AIR BAGS <sup>3)</sup> — Advanced multistage front <sup>4)</sup>	•	•	•	•
— Driver's-side inflatable knee blocker <sup>5)</sup>	•	•	•	•
— Side seat-mounted, for driver and front-passenger <sup>6)</sup>	•	•	•	•
— Side-curtain for all rows <sup>6)</sup>	•	•	•	•
ELECTRONIC STABILITY CONTROL (ESC) <sup>7)</sup> — Includes Electronic Roll Mitigation, Trailer Sway Damping <sup>7)</sup> and All-Speed Traction Control	•	•	•	•
KEYLESS ENTER 'N GO <sup>®</sup>	•	•	•	•
REMOTE PROXIMITY KEYLESS ENTRY	•	•	•	•
PARKSENSE <sup>®</sup> REAR PARK ASSIST <sup>SM</sup> — Included with Navigation & Back-Up Camera Group and Driver Convenience Group			P	P
PARKVIEW <sup>®</sup> REAR BACK-UP CAMERA <sup>SM</sup> — Included with Navigation & Back-Up Camera Group and Driver Convenience Group (requires 8.4-inch radio)			P	P
SECURITY ALARM — Included with Premium Group and Popular Equipment Group		P	P	•

### PACKAGES/EQUIPMENT GROUPS

BLACKTOP PACKAGE (SE) — Includes Gloss Black grille, headlamp bezels in Black and 17-inch aluminum wheels with Black pockets	0			
BLACKTOP PACKAGE (SXT and GT) — Includes Gloss Black grille, lower fascia, exterior mirrors and headlamp bezels in Black, Black side roof rails, Torsion suspension on SXT and 19-inch Gloss Black wheels		0		0
CHROME APPEARANCE GROUP — Includes bright door handles, bright side roof rails and 19-inch Chrome-clad aluminum wheels		0		
DRIVER'S CONVENIENCE GROUP — Includes Universal Garage Door Opener <sup>TM</sup> , ParkSense Rear Park Assist <sup>SM</sup> and ParkView Rear Back-Up Camera <sup>SM</sup> (requires 8.4-inch radio)			0	0
NAVIGATION & BACK-UP CAMERA GROUP — Includes 3-Zone ATC air conditioning, Universal Garage Door Opener <sup>TM</sup> , Radio 8.4 NAV, ParkSense Rear Park Assist <sup>SM</sup> and ParkView Rear Back-Up Camera <sup>SM</sup> (requires 6 speakers with subwoofer for GT)			0	0
POPULAR EQUIPMENT GROUP — SE includes overhead console, leather-wrapped steering wheel, leather-wrapped shift knob, sun visors with illuminated vanity mirrors, passenger assist handles, interior observation mirror, Crossroad includes security alarm, remote start, Universal Garage Door Opener <sup>TM</sup> , heated front seats and heated steering wheel	0		0	
PREMIUM GROUP — Includes front-passenger forward fold-flat seat, power 4-way lumbar adjuster, passenger in-seat cushion storage, leather-wrapped shift knob, interior observation mirror, leather-wrapped steering wheel, premium cloth seats, security alarm, 6-way power driver's seat, SiriusXM Satellite Radio <sup>SM</sup> and Radio 4.3		0		
PREMIUM SOUND GROUP — Includes Universal Garage Door Opener <sup>TM</sup> , 6 premium speakers with subwoofer			0	
REAR-SEAT VIDEO GROUP I — Includes premium sound system, 2 <sup>ND</sup> -row overhead 9-inch video screen, video remote control and wireless headphones			0	0
TRAILER TOW PREP GROUP — Includes 4-pin trailer tow connector wiring harness				0

• = Included, 0 = Optional, P = Available within Package noted.

## /// BUYER'S GUIDE – GRAND CARAVAN

	TS	SE PLUS	SXT	GT
<b>ENGINE AND TRANSMISSION</b>				
3.5L Pentastar® Flex Fuel DOHC Variable Valve Timing (VVT) with V5/6-speed Automatic with AutoStick	•	•	•	•
<b>MECHANICAL FEATURES</b>				
ALTERNATOR — 160-amp	•	•	•	•
BATTERY — 730-amp, maintenance-free	•	•	•	•
BRAKES — 4-wheel antilock with heavy-duty discs	•	•	•	•
DEFROSTER — Rear	•	•	•	•
ENGINE BLOCK HEATER	0	0	0	0
FUEL OPTIMIZER CALIBRATION	•	•	•	•
FUEL TANK — 20-gallon	•	•	•	•
HEAVY-DUTY ENGINE COOLING	•	•	•	•
REMOTE START SYSTEM		•	•	•
SPEED CONTROL	•	•	•	•
SUSPENSION — Load-leveling and height control (included with Trailer Tow Group on GT)				P
— Performance-tuned				•
— Towing-tuned	•	•	•	
TIP START — Quiet start; prevents double starts	•	•	•	•
<b>EXTERIOR FEATURES</b>				
BELT MOLDING — Black	•	•		•
— Bright (not available with Blacktop Package)			•	
DOOR HANDLES — Body-color	•	•	•	•
DOORS — Manual sliding	•	•		
— Power sliding			•	•
FASCIAS — Body-color	•	•	•	•
FOG LAMPS		•	•	•
GLASS — Sunscreen	•	•	•	•
GRILLE — Black/Bright	•		•	
— Body-color				•
— Gloss Black (included with Blacktop Package)			•	P
READLAMPS — Automatic		•	•	•
— Black bezels (included with Blacktop Package)		•	•	P
— Daytime running lamps (DRLs)	•	•	•	•
— Quad halogen	•	•	•	•
LIFTGATE — Power			•	•
MIRRORS — Foldaway, power, heated with Black exterior	•			
— Foldaway, power, heated with body-color exterior		•	•	•
<b>EXTERIOR FEATURES (continued)</b>				
ROOF RACK — Stow 'n Place® Black (requires Blacktop Package on SXT)	0	0	P	0
— Stow 'n Place, Bright			•	

	SE	SE PLUS	SXT	GT
TIRE INFLATOR KIT	•	•	•	
TIRES — 225/65R17 BSW All-Season Touring	•	•	0	
— P225/65R17 BSW All-Season	0	0	0	•
— P225/65R17 BSW Touring	0	0	•	0
— Spare, compact	0	0	0	0
WINDSHIELD WIPERS — Front, variable/intermittent	•	•	•	•
— Rear wiper/washer	•	•	•	•
<b>INTERIOR FEATURES</b>				
AIR CONDITIONING — 3-Zone Automatic Temperature Control (ATC) (included with Driver's Convenience Group)				P
— 3-Zone manual temperature control	•	•	•	
AIR FILTRATION	•	•	•	•
ASSIST HANDLES — Front-row passenger mounted on A-pillar, 2 <sup>nd</sup> -row passengers mounted over sliding doors and on B-pillars	•	•	•	•
DOOR LOCKS — Power	•	•	•	•
FLOOR MATS — Easy-clean	•	•	•	•
FLOOR SILENCER — Rear	•	•	•	•
GROCERY BAG HOOKS — On 3 <sup>rd</sup> -row seatbacks and back of driver's seat	•	•	•	•
LIGHTING — Door, courtesy	•	•	•	•
— Front courtesy lamp, rear dome lamp	•	•	•	
— Illuminated front door storage (included with Driver's Convenience Group)				P
— Liftgate, single floodlamp	•	•	•	•
— Overhead, ambient surround (included with Driver's Convenience Group)				P
— Rear swiveling overhead reading/courtesy lamps (included with Driver's Convenience Group)				P
MIRRORS — Auto-dimming rearview mirror with integrated microphone (included with Uconnect® Hands-Free Group, Single-DVD Entertainment Group, Uconnect Voice Command <sup>SM</sup> )	P	P	P	P
— Driver and front passenger's visor vanity	•	•	•	
— Illuminated visor vanity (included with Driver's Convenience Group)				P
POWER OUTLETS — 12-volt DC located in instrument panel and rear quarter trim panel	•	•	•	•
— Auxiliary, 12-volt in instrument panel	•	•	•	•
— Auxiliary, 115-volt inverter in front of driver's-side quarter trim panel, includes 2 USB ports and an HDMI port (included with single-DVD player)	P	P	P	•
REMOTE KEYLESS/ILLUMINATED ENTRY SYSTEM — Includes 2 transmitters, Sentry Key® anti-theft engine immobilizer and headlamps-off time delay	•	•	•	•
SHADES — 2 <sup>nd</sup> -row retractable (included with Driver's Convenience Group)			0/P	•

• = Included. 0 = Optional. P = Available within Package noted.

## INTERIOR FEATURES (continued)

	SE	SE PLUS	SXT	GT
<b>SHIFT KNOB</b> — Leather-wrapped (included with Uconnect® Hands-Free Group or Blacktop Package)	P	•	•	•
— Urethane	•			
<b>STEERING COLUMN</b> — Tilt/telescoping	•	•	•	•
<b>STEERING WHEEL</b> — Heated (included with Driver's Convenience Group)			P	•
— Leather-wrapped (included with Uconnect Hands-Free Group or Blacktop Package)	P	•	•	•
— Luxury	•			
— Mounted audio controls	P	•	•	•
<b>STORAGE</b> — Console, floor-mounted with 4 cup holders		•		
— Driver's door sill bin and left rear quarter trim bin	•	•	•	
— Glove box, dual (lower is lockable)	•	•	•	•
— Open bin in lower instrument panel	•	•	•	•
— Super Console			•	•
<b>TRIP COMPUTER</b> — Electronic Vehicle Information Center (EVIC) with display in instrument cluster, controls mounted on steering wheel				•
<b>UNIVERSAL GARAGE DOOR OPENER</b> <sup>(1)</sup> — Programmable, 3-function (included with Driver's Convenience Group)			P	•
<b>WINDOWS</b> — Front, power with driver's 1-touch up/down, power 2 <sup>nd</sup> -row and power 3 <sup>rd</sup> -row quarter vents	•	•	•	•
<b>SEATING AND TRIM</b>				
<b>SEATS</b> — 2 <sup>nd</sup> -row bench with 3 <sup>rd</sup> -row Stow 'n Go <sup>®</sup> 60/40 bench seat that folds in floor	•	•		
— 2 <sup>nd</sup> -row Super Stow 'n Go bucket seats that fold in floor and include a 2 <sup>nd</sup> -row in-floor storage bin	O	O	•	•
— 8-way power driver's seat		O	•	•
— 8-way power driver's and front-passenger seat				•
— Driver's 2-way power lumbar support (included with power driver's and front-passenger seat)		P	•	•
— Heated front seats (included with Driver's Convenience Group)			P	•
— Reactive front head restraints <sup>(2)</sup>	•	•	•	•
<b>UCONNECT®/MULTIMEDIA</b>				
<b>RADIO 430</b> — CD/DVD/MP3/HDD radio with 6.5-inch touchscreen, 28GB hard drive (approximately 6,700-song capacity), Gracenote MusicID <sup>®</sup> and audio jack input	•	•	•	
<b>RADIO 430N</b> — CD/DVD/MP3/HDD radio with 6.5-inch touchscreen, Garmin <sup>®</sup> Navigation, 28GB hard drive (approximately 6,700-song capacity), Gracenote MusicID and audio jack input		O	O	•
<b>SIRIUSXM<sup>®</sup> SATELLITE RADIO</b> <sup>(3)</sup> — Includes 1-year trial subscription (available only in continental United States; included with Uconnect Hands-Free Group, Single-DVD Entertainment Group or Uconnect 430N radio)	P	•	•	•
<b>SOUND SYSTEMS</b> — 6 speakers	•	•	•	
— 9 amplified speakers with subwoofer powered by a 506-watt amplifier				•
<b>UCONNECT VOICE COMMAND</b> <sup>(4)</sup> — Hands-free communication system includes auto-dimming rearview mirror with microphone and iPod <sup>®</sup> connection in glove compartment (included with Uconnect Hands-Free Group or Driver's Convenience Group)	P	•	•	•

## SAFETY & SECURITY

	SE	SE PLUS	SXT	GT
<b>AIR BAGS</b> <sup>(5)</sup> — Advanced multistage driver and front-passenger <sup>(6)</sup> ; includes low-risk deployment	•	•	•	•
— Driver's-side inflatable knee blocker <sup>(7)</sup>	•	•	•	•
— Front seat-mounted side <sup>(8)</sup>	•	•	•	•
— Side-curtain, for outboard passengers in all 3 rows <sup>(9)</sup>	•	•	•	•
<b>BLIND SPOT MONITORING (BSM)</b> <sup>(10)</sup> WITH REAR CROSS-PATH DETECTION <sup>(11)</sup> — Included with Safety Sphere Group				P
<b>CHILD SEAT ANCHOR SYSTEM (LATCH)</b> — Mounts for 2 child seats in 2 <sup>nd</sup> row help ease installation of compatible aftermarket child seats	•	•	•	•
<b>ELECTRONIC STABILITY CONTROL (ESC)</b> <sup>(12)</sup> SYSTEM — Includes Brake Assist and All-Speed Traction Control	•	•	•	•
<b>PARKSENSE<sup>®</sup> REAR PARK ASSIST</b> <sup>(13)</sup> SYSTEM — Assists while parking (included with Safety Sphere Group)				P
<b>PARKVIEW<sup>®</sup> REAR BACK-UP CAMERA</b> <sup>(14)</sup> — Included with Uconnect 430 and 430N	•	•	•	•
<b>SECURITY ALARM</b>		•	•	•
<b>TIRE PRESSURE MONITORING SYSTEM</b> — Warning lamp	•	•	•	•
<b>TRAILER SWAY CONTROL</b> <sup>(15)</sup>	•	•	•	•
<b>PACKAGES/EQUIPMENT GROUPS</b>				
<b>BLACHTOP PACKAGE</b> — Includes leather-wrapped shift knob, Delete-Roof Rack (SXT only), Black interior accents, fog lamps (SXT only), Black headlamp bezels, rear fascia scuff pad, Black grille, leather-wrapped steering wheel and 17-inch aluminum wheels		•	O	
<b>DRIVER'S CONVENIENCE GROUP</b> — Includes single rear overhead console, overhead storage bin; sun visors with illuminated vanity mirrors; 3-Zone Auto Climate Control, Universal Garage Door Opener, <sup>(16)</sup> heated steering wheel, 2 <sup>nd</sup> -row window shades, heated front seats, overhead ambient lighting, rear swiveling reading lamp, illuminated front door storage; Uconnect Voice Command <sup>(17)</sup> (GT)			O	•
<b>SAFETY SPHERE GROUP</b> — Includes ParkSense Rear Park Assist System, <sup>(18)</sup> BSM <sup>(10)</sup> and Rear Cross-Path Detection <sup>(11)</sup> System				O
<b>SINGLE-DVD ENTERTAINMENT GROUP</b> — Includes 2 <sup>nd</sup> -row overhead DVD player, 115-volt auxiliary power outlet, video remote control, 2 wireless headphones, remote USB port, 2 <sup>nd</sup> -row overhead 9-inch screen, SiriusXM Satellite Radio <sup>(19)</sup> (SE and SXT only)	O	O	O	O
<b>TRAILER TOW GROUP</b> — Includes trailer tow wiring harness, Class II hitch receiver and load-leveling/height-control suspension				O
<b>UCONNECT HANDS-FREE GROUP</b> — Includes leather-wrapped shift knob, rearview auto-dimming mirror with integrated microphone, steering wheel-mounted audio controls, Uconnect Voice Command <sup>(17)</sup> , SiriusXM Satellite Radio <sup>(19)</sup> and leather-wrapped steering wheel	O	•	•	•

• = Included. O = Optional. P = Available within Package noted.

DODGE.COM/LIFE

## DODGE GOODS

Check out an extensive line of gifts and accessories for the Dodge enthusiast. From authentic apparel to die-cast replica cars for the collector, as well as electronics and office supplies, all lifestyle items are as bold as your Dodge vehicle. Refer to [dodge.com/life](http://dodge.com/life) for our full product lineup.



Properly secure all cargo.

#### MOPAR ACCESSORIES ///

- Roof-Mount Ski & Snowboard Carrier
- Molded Cargo Tray
- Hitch Receiver\*

\*Check User Guide for hitch type, load capacity and heavy-duty equipment required. Do not exceed rated tow capacity of the vehicle as equipped. Trailer may require items not supplied by Mopar.

**PERFORMANCE YOU CAN'T PASS UP.** Consider this: if Mopar can help your car endure the intensity of the racetrack, just imagine what Mopar can do for your daily commute. From factory-backed parts that boost performance to accessories that add more altitude to travel systems that let you take your active lifestyle to the next level to premium audio packages, the Mopar lineup has it all. Floor it over to your closest Dodge dealership to see the full line of offerings or hit up [mopar.com](http://mopar.com)

Journey SXT AWD with Authentic Dodge Accessories by Mopar: Front Air Deflector, Sport Utility Bars, Roof-Top Cargo Box and Chrome Appearance Group Package.

[1] Apple CarPlay and Android Auto require a compatible mobile device connected via USB cable to the Uconnect system. Data plan rates may apply. Visit [dodge.com/Phone](http://dodge.com/Phone) for system and device compatibility. [2] Siri Lane Assist requires an iPhone equipped with 5G. Certain features are not available while the vehicle is in motion. iPhone must be within active cellular range. Customer's existing iPhone data rates apply to internet-supported features. [3] This system is not meant to be used while the car is in motion. [4] Requires a mobile phone equipped with the Bluetooth Hands-Free Profile. Visit [dodge.com/Phone](http://dodge.com/Phone) for system and device compatibility. [5] No system, no matter how sophisticated, can equal the laws of physics or overcome careless driving actions. Performance is limited by available traction, which snow, ice and other conditions can affect. When the ESC warning lamp flashes, the driver needs to use less throttle and adjust speed and driving behavior to prevailing road conditions. Always drive carefully, consistent with conditions. Always wear your seat belt. [6] For children 48" - 45 lb and up to 4'9". [7] SiriusXM subscriptions for audio and data services are sold by SiriusXM to follow your trial subscription. If you decide to continue listening after your trial, the subscription plan you choose will automatically renew thereafter and you will be charged according to your chosen payment method at then-current rates. Fees and taxes apply. To cancel, you must call SiriusXM at 1-866-635-2343. See the SiriusXM Customer Agreement for complete terms and more information at [www.siriusxm.com](http://www.siriusxm.com). All fees and programming subject to change. Your equipment and features for SiriusXM services will vary depending upon the vehicle you select and may be limited in select markets. [8] Your Text Reply and Voice Texting features require a compatible mobile device enabled with Bluetooth Message Access Profile (MAP). iPhone and some other smartphones do not currently support Bluetooth MAP. Visit [dodge.com/Phone](http://dodge.com/Phone) for system and device compatibility. Ensure MAP is ON and outgoing message notification is enabled. Vehicle must be registered for Uconnect Access and you must fulfill minimum subscription requirements. Also requires the use of a compatible smartphone that supports text messaging and Bluetooth. Visit [dodge.com/Phone](http://dodge.com/Phone) for system and device compatibility. [9] Always look before proceeding. Electronic drive aid is not a substitute for conscientious driving; always be aware of your surroundings. [10] Always check visually for vehicles prior to changing lanes. [11] ACC is a driver convenience system, not a substitute for active driver involvement. The driver must remain aware of traffic conditions and be prepared to use the brakes to avoid collisions. [12] FCW system is duty as alert system for the front of the vehicle which does not take any actions to change the vehicle dynamics to avoid a collision and is not a substitute for active driver involvement. The driver must remain aware of traffic conditions and be prepared to use the brakes to avoid collisions. [13] Always sit properly with the head restraint properly adjusted. Never place anything in front of the head restraints. [14] The Advanced Front Air Bags in this vehicle are certified to the new U.S. Federal regulations for Advanced Air Bags. Children 12 years old and younger should always ride buckled up in a rear seat. Infants or rear-facing child restraints should never ride in the front seat of a vehicle with a passenger front air bag. All occupants should always wear their lap and shoulder belts properly. [15] LSW is a driver convenience system, not a substitute for active driver involvement. The driver must remain aware of traffic conditions and be prepared to use brakes to avoid collisions. [16] May not work with all garage door openers. [17] Transferable. See dealer for complete details and a copy of the 5-Year/50,000-Mile Powertrain Limited Warranty.

©2017 FCA US LLC. All Rights Reserved. Dodge, Charger, Challenger, Durango, Grand Caravan, Journey, Blacktop, Citadel, the overbar grille, Crossroad, R/T, SRT, DXT, NDM, Mopar, LaneSense, ParkSense, ParkView, Performance, Scented Key, Show 'n Go, Show 'n Pack, Tigershark and Uconnect are registered trademarks, and Keyless Enter 'n Go is a trademark of FCA US LLC.

MultiAir is a registered trademark of C.R.F. Società Consortile per Azioni, used under license by FCA US LLC. Ripire is a registered trademark of Ripire Electronics, Inc. BeatsAudio and Dr. Dre are trademarks of Beats Electronics, LLC. Bluetooth is a registered trademark of Bluetooth SIG, Inc. Blu-ray is a trademark of Blu-ray Disc Association. Brande is a registered trademark of Finesse Brands S.p.A. Graceland Music 3D is a registered trademark of Graceland, Inc. iPad, iPhone and Siri are registered trademarks, and Apple CarPlay is a trademark of Apple Inc. Instagram and logo are registered trademarks of Instagram, Inc. iCarro and the Garmin logo are registered trademarks of Garmin, Ltd. or its subsidiaries and are registered in one or more countries, including the U.S. Pinterest and logo are registered trademarks of Pinterest, Inc. Snap, SW and all related marks and logos are trademarks of SiriusXM Radio Inc. and its subsidiaries. Facebook and logo are registered trademarks of Facebook, Inc. Michelin is a registered trademark of Michelin North America, Inc. The Twitter logo is a service mark of Twitter, Inc. Google, Google Play, Google+, Android, Android Auto, YouTube and other marks are trademarks of Google Inc.

About this catalog, since the time of printing, some of the information you'll find in this catalog may have been updated. Ask your dealer for details. Some of the equipment shown or described throughout this catalog may be available at extra cost. Specifications, descriptions, illustration materials and all competitive comparisons contained herein are as accurate as known at the time this publication was approved for printing. FCA US LLC reserves the right to discontinue models at any time or change specifications without notice or without incurring obligation. Some options may be required in combination with other options. For the price of the model with the equipment, you desire, or verification of specifications contained here, see your Dodge dealer.

