

2017 DODGE CHALLENGER // CHARGER // VIPER



DOMESTIC. NOT DOMESTICATED.



TABLE OF CONTENTS

- 03 *//// CHALLENGER*
- 26 *//// CHARGER*
- 47 *//// VIPER*
- 54 *//// UCONNECT®*
- 55 *//// SAFETY & SECURITY*
- 56 *//// DODGE MERCHANDISE*
- 57 *//// MOPAR® ACCESSORIES*
- 58 *//// BUYER'S GUIDES*

This is what happens when you have muscle-car heritage coursing through your veins. You get modern-day marvels that are engineered with more passion, precision and performance than ever before. This is the Brand that boasts both style and power, and never makes you choose between the two. With more than 100 years under their belt, each vehicle in the 2017 Dodge lineup pays homage

to its iconic bloodline with award-winning features and superior craftsmanship. The snarling engines and sleek exteriors of each vehicle beg to be taken out on the open road. The Dodge name continues to live on with the same determination that the Dodge brothers had when first creating the Brand. It's time to put the pedal to the metal and live fast. **HERE'S TO THE NEXT GENERATION OF INNOVATION.**

DOMESTIC. NOT DOMESTICATED.
DODGE



2017 DODGE CHALLENGER

A close-up, black and white photograph of a car's headlight and grille. The headlight is on the left, showing its intricate lens and reflector. The grille is on the right, with a prominent red diagonal stripe running across it. The background is dark, making the metallic and glass surfaces stand out.

*IF YOU KNOW.
YOU KNOW.*

It's an enigma. Nothing has changed. Everything has changed. The name and its signature styling continue to turn diehards on while the latest technology and modern mechanics give this legend the chops to uphold the weight of its storied reputation. It's a paragon of muscle, outfitted with intense handling dynamics and leading-edge components that transfer hard-core power to the road. This is Dodge Challenger — equal parts icon and modern-day performance machine. The golden age of muscle is now.





RINGS OF FIRE

The Challenger looks intimidating. And it should, considering what's lurking under its sleek sheet metal. But this modern beast is equally as fierce on the outside. The menacing projector headlamps with quad halo LED surrounds are a throwback to the famed '71 Challenger. Challenger also gives other drivers a breathtaking parting shot — bold, seamless, split LED taillamps. Their design nods to the past while projecting a contemporary appearance.



A TRUE CLASSIC NEVER GOES OUT OF STYLE — it just gets better over time. Challenger has kept pace by melding retro styling with amped-up attitude. It starts with menacing projector headlamps with quad halo LED surrounds, a heritage split grille surround, and the hood's power-bulge and functional inlets. Walk around this legend and you'll find it looks as intimidating from the rear as it does from the front. Challenger T/A takes retro to a new


level with Satin Black body graphics, premium-painted Satin Black Mopar® Induction Hood, Satin Black rear spoiler with T/A graphics, T/A illuminated air catcher headlamps, Satin Black wrapped roof and decklid, Lightweight Forged Aluminum wheels and more. T/A 392 models also boast new 20x9.5-inch wheels wrapped in Pirelli® tires and six-piston Brembo® brakes.

////// Challenger T/A shown in Green Go®. *Late availability.

FEELS LIKE FRIDAY



////// Challenger T/A interior shown.



THE NEW CHALLENGER T/A // Open the door and the heritage-inspired Houndstooth cloth seats or the available Black Nappa leather trim with Alcantara® suede seats might make you feel like you've unlocked a portal to the golden age of muscle. The Gloss Black cluster bezel or the White face instrument cluster might seem like the focus of the Challenger T/A interior, but they're not. No, the most important element of this cockpit is the driver. Front performance seats feature comfortable contours and large side bolsters help provide maximum lateral support. The leather performance steering wheel with vehicle control buttons and bright pedals helps you handle the road with ease.

Every Challenger model gives full bragging rights with must-have features like a heritage-inspired shifter, Tic-Toc-Tach gauges, premium soft-touch materials and available Dodge Performance Pages. Challenger also makes room for everyone with seating for five adults.

//// Challenger T/A shown with available Black Nappa leather trim with Alcantara suede inserts and embroidered Silver logo.

AIRBAG

The only thing retro is the atmosphere — the tech is purely 21st-century. Challenger offers plenty of savvy features, including a seven-inch reconfigurable digital gauge cluster. Buttons on the steering wheel let you scan through hundreds of different vehicle configurations and customize what information you see and how you see it.



////// Engineered with technology, Uconnect® brings a range of communication and entertainment services directly to your Challenger. Depending on your trim level and options, this system includes a touchscreen display up to 8.4 inches and steering wheel-mounted controls that operate features like a Bluetooth® enabled phone, integrated Voice CommandTM navigation, radio, cruise control and more.

APPLE CARPLAYTM⁽¹⁾ A smarter, safer way to use an iPhone® inside your vehicle and seamlessly integrate it with the Uconnect touchscreen and Siri® voice control. You can make calls, access music, send and receive messages, get directions optimized for traffic conditions and more, while staying focused on the road.



ANDROID AUTOTM⁽²⁾ Automatically provides a safer way to use Android while driving. Share information while you easily access the best of Google: maps with voice-guided navigation and play music, place phone calls or send and receive messages⁽³⁾ and ask Google search any question by voice command⁽¹⁾.

android
auto⁽²⁾

FIND OUT MORE AT DRIVEUCONNECT.COM

*A note about this brochure: all disclaimers and disclosures can be found on the inside back cover.





////// Challenger R/T Scat Pack shown in White Knuckle.

EFFICIENCY IS A

MUSCLE



////// UP TO 30 MPG*

////// 3.6L DOHC PENTASTAR® VARIABLE VALVE TIMING (VVT) 24V V6 WITH 305 HP AND 30 MPG HWY.* This robust 3.6-liter V6 delivers 305 horsepower, an estimated six-second 0 – 60 time and up to 30 mpg highway.* It's the combination of a TorqueFlite® eight-speed transmission, fully independent dual-cam phasing, sequential port fuel injection, and high-flow intake and exhaust ports that result in this exceptional blend of high torque and fuel efficiency.

////// 5.7L HEMI® V8 WITH UP TO 375 HP, 410 LB-FT OF TORQUE AND 25 MPG HWY!* Pair the 5.7-liter HEMI V8 with a standard TREMEC® six-speed manual (375 hp, 410 lb-ft of torque) and it takes you from 0 – 60 mph in the low five-second range. When equipped with the TorqueFlite eight-speed automatic (372 hp, 400 lb-ft of torque) and Fuel Saver Technology, eight cylinders transition to four when full power is not required to help provide an increase in fuel efficiency.

////// 392 HEMI V8, 485 HP, 475 LB-FT OF TORQUE AND UP TO 25 MPG HWY!* The available HEMI V8 delivers a performance feast — 485 horsepower, 475 lb-ft of torque, an impressively flat torque curve and a 0 – 60 time in the mid four-second range. When equipped with the TorqueFlite eight-speed, Fuel Saver Technology deactivates four cylinders if eight are not needed, creating a double threat of power and efficiency.

*2016 EPA estimated 19 mpg city/30 mpg highway with 3.6-liter engine and eight-speed automatic transmission. Actual mileage may vary.

*2016 EPA estimated 16 mpg city/25 mpg highway when equipped with automatic transmission. Actual mileage may vary. **2016 EPA estimated 13 mpg city/25 mpg highway. Actual mileage may vary.



TRACK-PROVEN TUNED CHASSIS // High-demanding track conditions require tightly engineered hardware. Challenger R/T Scat Pack and 392 HEMI® Scat Pack Shaker showcase a high-performance tuned chassis that's ready to go.

SHOCK ABSORBERS // Bilstein® high-performance shock absorbers are precision-damped to help provide a confident, smooth ride for the everyday commute while being capable for weekend track duty.

SUSPENSION // Options range from Sport-tuned to high-performance to the top-of-the-line competition suspension featuring adaptive damping. A bold combination of movement and staying power comes from a sophisticated suspension geometry and rear-wheel drive. Whether it's the everyday commute or more challenging driving situations, the independent five-link rear suspension is finely tuned to help provide superior handling and a comfortable ride. When the rubber meets the road, a lower unsprung mass helps maintain better tire contact with the ground and reduces road noise. Models equipped with a 392 HEMI V8 feature unique suspension geometry that helps improve balance, cornering ability and steering responsiveness. Exclusive Bilstein shocks and a lowered suspension allow these performers to achieve 0.93 G on the skid pad — on par with some of the world's best-handling cars. The three-mode Bilstein Adaptive Damping System on Challenger SRT® models takes drivers from Street Mode (sporty) to Sport Mode (firm) to Track Mode (firmest, max handling).

AGGRESSIVE FRONT- AND REAR-CAMBER GEOMETRY // Performance handling requires maximum road-holding grip, and Challenger Scat Pack models deliver with aggressive front- and rear-camber geometry. Set at -1.2 degrees in the front and -0.75 degrees in the rear, Challenger is set up for high-speed cornering with its tires leaning inboard at the top relative to the body.

BRAKES // Standard four-wheel antilock disc brakes provide solid stopping power. Available Brembo® brakes help create superior cooling and fade performance courtesy of wind tunnel-designed brake cooling ducts that direct airflow to vented rotors for consistent stopping power.

YOU'VE EARNED YOUR STRIPES // // // There are car lovers, and then there are those who eat, breathe and sleep cars. Who spend their free-time tinkering. Who can't leave well enough alone. Who remember a time when you didn't show up unless your car was tricked out with parts, stripes and a Scat Pack sticker on the quarter-glass that served as a tell that your Challenger was hiding something substantial under the hood. There's another generation that won't settle for just a performance car. They're seeking the ultimate combination of raw power, pure performance and authentic attitude. These vehicles are for both contingents.

THE PIONEERS OF MUSCLE: DODGE, MOPAR®, SCAT PACK // // // 392 HEMI® Scat Pack Shaker is the real deal, straight from the factory. We're talking functional, fully floating, open-element Shaker hood scoop with cold air induction. A Mopar Cold Air Intake, conical air filter and legendary 392 HEMI V8 engine churn out 485 horsepower and 475 lb-ft of torque. Because power means nothing without control, four-piston Brembo® brakes, 3-mode Electronic Stability Control (ESC)TM with Full-Off Mode, high-performance suspension with 20x9-inch wheels and performance steering are standard.

The 392 HEMI Scat Pack Shaker shows its supremacy with a 392 HEMI badge on the Shaker hood scoop, bold hood-to-tail stripes and a retro fender badge.

// // // Challenger 392 HEMI Scat Pack shown in Contusion Blue.



POWER, PERFORMANCE AND SPEED



////// The TorqueFlite[®] eight-speed automatic transmission helps deliver impressive fuel efficiency and world-class precision. Available Dodge Performance Pages, paddle shifters and standard Sport Mode help lower shift times from 350 to 250 ms. SRT[®] models, when in Track Mode, reduce shift times even more, from 350 ms down to 160 ms for lightning-quick gear changes.

////// When the TorqueFlite is mated to the Supercharged 5.2-liter SRT Hellcat HEMI[®] V8, it's fortified to withstand the groundbreaking 707 horsepower and 650 lb-ft of torque unleashed by the engine. Enhancements include additional pinion gears and five more clutch pack discs.

////// The passion of the manual is alive and well. Challenger also offers the intensity of a heavy-duty TREMEC[®] six-speed manual transmission for those who want to put the power of shifting into their own hands.

////// Challenger 392 HEMI[®] SRT Hellcat Shaker stows to Go Mango.



707 HORSEPOWER

////// FEEL THE FURY





**WE DIDN'T HOLD BACK.
NEITHER SHOULD YOU**

Like a predator laying in wait, stalking its prey, Challenger SRT® Hellcat is just waiting for you to unlock the full potential of 707 horsepower with your Red key. The 2017 Dodge Challenger SRT Hellcat is propelled by the Supercharged 6.2-liter SRT Hellcat HEMI® V8 and offers a bewildering quarter-mile time of 10.8 seconds and a top speed of 199 mph.*

Opt to mate this powerplant to the TorqueFlite® eight-speed automatic transmission that's uniquely designed to withstand that epic horsepower and torque, or to the high-performance Viper modified TREMEC® six-speed manual transmission that boasts an internal cooling pump and external, vehicle-mounted oil cooler.

*NHTSA certified 10.8 @ 126 with street-legal drag tires, 11.2 @ 125 with production tires.

*** Challenger SRT® Hellcat shown in TorRed with standard 20x9.5-inch lightweight forged aluminum wheels with available Brass Monkey finish.



EPIC. POWERFUL. INTENSELY FAST.

30 40 50 60 70 80

CHALLENGER SRT® HELLCAT AND CHALLENGER SRT 392 // This Supercharged 6.2-liter SRT Hellcat HEMI® V8 lives up to the hype. The engine features a forged-steel crankshaft and induction-hardened bearing surfaces, a specially tuned crank damper tested to 13,000 rpm, high-strength forged-alloy pistons coupled to powder-forged connecting rods, high-load capacity bushings and diamond-like carbon-coated piston pins. Premium-grade heat-treated aluminum cylinder heads with die-cast aluminum rocker covers are optimized for superior thermal conductivity.

The Supercharger houses internal charge coolers and an integrated electronic bypass valve. The twin-screw rotors are specially treated to accommodate tighter internal tolerances between the rotors and help improve overall performance. Air is delivered into the engine's air box via the Air Catcher™ Inlet Port located in the driver's-side parking lamp. A 92mm throttle body controls airflow into the Supercharger, air charge coolers and then into the inlet port.

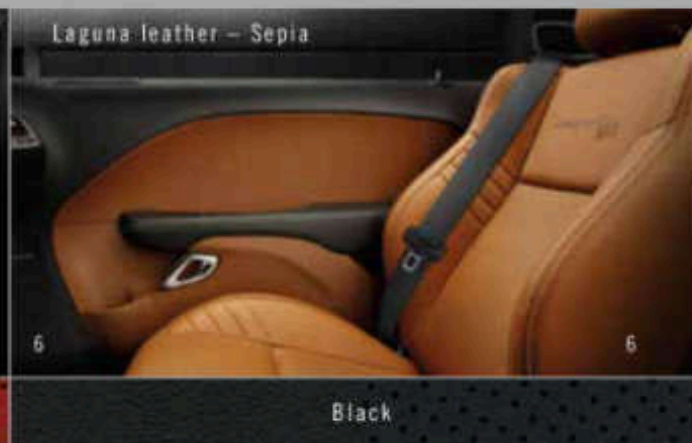
With this kind of power, it's a given that the exterior demands exclusive extras like a Viper inspired aluminum hood, a functional scoop flanked by a set of functional air extractors and new SRT Hellcat badges. Owners are handed both a Red and Black key fob at delivery. The Black key restricts power to 500 horsepower, while the Red key unlocks the full 707 horsepower.

Challenger SRT 392 shows its authority with a robust, naturally aspirated 392 HEMI V8 engine with a powerful 485 horsepower and 475 lb-ft of torque. Both SRT 392 and SRT Hellcat let drivers personalize their drive experience via the Drive Modes features: pre-configured Default, Sport and Track settings, as well as a Custom setting for a uniquely tailored experience.

Inside, both SRT 392 and SRT Hellcat sport a blend of premium materials, race-inspired technology and heritage-influenced design cues.



500



MORE INTERIOR CHOICES FEATURED ON THE NEXT PAGE.



Nappa leather trim/suede bolsters – Black

4

Black

Black/Ruby Red



INTERIOR / CHOICES

- 1 /// Sedoso/Houndstooth Premium cloth Sport seat. Black — standard on SXT and R/T
- 2 /// Sedoso/Houndstooth Performance cloth seats with Tungsten accent stitching. Black — standard on T/A and T/A 392; standard on R/T Shaker and R/T Scat Pack with embroidered Bee logo
- 3 /// Nappa leather trim with accent stitching and Nappa perforated inserts. Black/Pearl (also available in Black and Dark Ruby Red/Ruby Red) — standard on SXT Plus and R/T Plus
- 4 /// Nappa leather trim with Alcantara® suede bolsters, Tungsten accent stitching and Alcantara perforated suede inserts with Performance seats. Black (also available in Black/Ruby Red) — standard on R/T Plus Shaker and included with R/T Classic Package on R/T Plus
- 5 /// Nappa leather trim with Alcantara suede bolsters, Tungsten accent stitching and Alcantara perforated suede inserts with embroidered logo (Bee logo on Scat Pack and 392 Shaker, T/A logo on T/A) Performance seats. Black (also available in Black/Ruby Red on Scat Pack models) — standard on T/A Plus and included with the Leather Interior Group on T/A 392; standard on 392 HEMI® Scat Pack Shaker and included with the Leather Interior Group on R/T Scat Pack
- 6 /// Premium Laguna leather with perforated leather inserts and embossed logo Performance seats in Sepia (also available in Black) — standard on SRT® 392 with SRT logo and SRT Hellcat with SRT and Hellcat logos (Red seat belts available with Black leather)
- 7 /// Nappa leather with Alcantara suede bolsters, Alcantara perforated suede inserts and Tungsten accent stitching with embroidered logo Performance seats. Black, shown with optional Red seat belt (also available in Black/Ruby Red) — optional on SRT 392 with SRT logo and SRT and Hellcat logos (Red seat belts available with Black leather)



STRIPES

COLOR/STRIPE AVAILABILITY*

	[1] V6 BODYSIDE STRIPE	[2] BLACKTOP STRIPE	[3] R/T MODERN HOOD STRIPE	[4] R/T CLASSIC BODYSIDE STRIPE	[5] SHAKER GRAPHICS	[6] DCAT PACK STRIPE	[7] SRT® 392 HOOD STRIPES	[8] SRT HELLCAT HOOD	[9] SRT HELLCAT STRIPES	[10] T/A GRAPHICS
BILLET	●	●	●	●○	●	●	●	○	○	○
WHITE KNUCKLE	●	●	●	●●	●	●	●●	○	○	○
PITCH BLACK	●	●	●	●●●	●	●	●●	○	○	○
TORRED	●	●	●	●○	●	●	●●	○	○	○
REDLINE 3K	●	●	●	●○	●	●	●●	○	○	○
MAXIMUM STEEL METALLIC	●	●	●	●○	●	●	●●	○	○	○
CONTUSION BLUE	●	●	●	●○	●	●	●	○	○	○
GRANITE	●	●	●	●●●	●	●	●●	○	○	○
DESTROYER GREY	●	●	●	●○	●	●	●●	○	○	○
OCTANE RED	●	●	●	●○	●	●	●●	○	○	○
GREEN GO**	●	●	●	●○	●	●	●	○	○	○
YELLOW JACKET	●	●	●	●○	●	●	●●	○	○	○
GO MANGO	●	●	●	●	●	●	●	○	○	○

● = Black Satin-Gloss ○ = Stone White High-Gloss ● = Red High-Gloss ● = Silver Satin-Gloss ○ = Matte Carbon ○ = Satin Black

*Stripe/paint combinations not available on all models. **SRT Hellcat stripes shown on page 4. †T/A graphics shown on page 8.

**Late availability.



PUT A DODGE

IN YOUR GARAGE

-1963



2017 DODGE CHARGER



This is a car with more than 50 years of credentials behind its name. A car that helped usher in the first era of muscle and is now fueling the segment's resurgence with a broader definition of performance. It's no longer just about feasting on burnt rubber, it's about equal parts attitude, personality and horsepower. It's about performance on the streets and at the pump. It's about having the audacity to give a family-friendly sedan a ludicrous 707 horsepower.

This is Dodge Charger, a car with skin in the game for a half-century. A performance car no longer satisfied with merely distancing itself from the pack, it's aiming to lap the pack.

DODGE FEVER ⁻¹⁹⁶⁸

Charger's amped-up attitude is so fierce, it's impossible to ignore. The first glance sends chills. The second begs you to run your hand along its low, lean profile and scalloped bodyside. Its imposing grille leaves no question where this retro-modern muscle comes from. Front to rear, Charger commands authority with projector headlamps and LED lighting. Even the most discerning eyes take note.



////// Charger Daytona shown in Yellow Jacket.

HIT UP AN OLD FLAME //

The heritage-inspired Charger R/T Scat Pack proudly wears the Scat Pack Bee on its Gloss Black grille. Built for performance, a large inlet and scoop transfers gulps of fresh air beneath the hood to efficiently cool the engine compartment. The 392 HEMI® fender badges let onlookers know exactly what's under the hood. Available High Intensity Discharge (HID) headlamps with LED daytime running lamps and bulked-up 20x9-inch wheels amp up the track-infused design. Its rear heat extractors and 1-piece Satin Black performance spoiler bear witness that this vehicle means business.



// Charger R/T Scat Pack shown in Pitch Black.



////// Charger R/T shown in Black/Pearl Nappa leather with Sepia accent stitching and perforated inserts.



THIS MUSCLE **HAS A SOFT SIDE**

Don't just love us for our body. Want us for our technology. Appreciate us for our soft spaces and for our ability to accommodate your friends.

Charger's driver-focused interior is stocked with race-inspired details, bold colors and retro-cued soft-touch surfaces. A genuine, 1-piece-stamped aluminum instrument panel bezel adds the finishing touch on an interior that is dedicated to the details.

Take control with the thick-rim three-spoke Sport steering wheel. Available paddle shifters with rev-matching capability bring track-inspired performance to the everyday drive.

Seating for five ranges from premium cloth to Nappa leather trim and Alcantara® suede to premium Laguna leather. Standard Dual-Zone Temperature Control and available heated/ventilated front seats, heated rear seats and full-circumference heated steering wheel bring year-round comfort, in any climate.

DRIVEN BY TECHNOLOGY

While the performance technology helps pull extraordinary numbers, it's the driver-centered tech that adds more envy to the interior. It starts with a seven-inch reconfigurable digital gauge cluster. From here, you get real-time information and vehicle status updates in full color, as well as available turn-by-turn navigation information and visual safety system notifications.

Keep tabs on performance numbers including 0 – 60 time, reaction time and lap timer with available Dodge Performance Pages. The pages also include configurable Drive Modes that allow you to make performance adjustments to the engine, transmission, steering response and traction control.

The center console shifter gives Charger a distinctive level of sophistication. The electronic shifter with AutoStick mimics the operation of a traditional linkage shifter, while allowing for smoother and more efficient shifting.





A black gas pump nozzle and hose are laid out on a dark asphalt surface. The nozzle is on the right side, and the hose forms a large circle. In the center of the circle, the number '30' is written in large, bold, red font. To the right of the '30', the text 'UP TO 30 MPG*' is written in a smaller, white, sans-serif font.

30
UP TO 30 MPG*

THRILL RIDES

THE LINE STARTS HERE



////// 3.6L DOHC PENTASTAR® VARIABLE VALVE TIMING (VVT) 24V V6 WITH MAX 300 HP AND UP TO 30 MPG HWY.* This powerplant boasts 292 horsepower and kicks the ponies up to 300 when paired with the available Rallye Group that includes Sport Mode, cold-air induction, sport-tuned exhaust and die-cast paddle shifters. Couple that with the standard TorqueFlite® eight-speed for an impressive combination of 0 – 60 in the mid six-second range and up to 30 mpg highway.*

////// 5.7L HEMI™ VVT V8 WITH 370 HP, 395 LB-FT OF TORQUE AND UP TO 25 MPG HWY! The legendary engine releases a big dose of horsepower, impressive torque and a 0 – 60 mph acceleration in the low five-second range. The standard TorqueFlite eight-speed automatic transmission with AutoStick and Fuel Saver Technology helps Charger deliver a whole new level of performance and efficiency. It's technology like this that supplies Charger with an equal dose of muscle and responsibility.

////// 392 HEMI V8, 485 HP, 475 LB-FT OF TORQUE AND UP TO 25 MPG HWY! Standard on Charger R/T Scat Pack, Daytona 392 and SRT® 392, the intensity of this HEMI V8 churns out a potent 485 horsepower and 475 lb-ft of torque across a wide rpm range. Charger SRT accelerates from 0 – 60 mph in the high four-second range and covers a quarter-mile in the high 12-second range. The robust TorqueFlite eight-speed automatic transmission features rev-matching on downshifts.

////// 6.2L SRT HELLCAT HEMI V8 WITH 707 HP AND 650 LB-FT OF TORQUE. This is the baddest of the bunch. It assaults the asphalt with 707 horsepower, an unreal 650 lb-ft of torque and 0 – 60 mph in the mid three-second range. Paired to the TorqueFlite eight-speed, it delivers impressive street driving and maximum performance with 160-millisecond shifts and rev-matching on downshifts. The SRT TorqueFlite eight-speed features enhancements over the standard version to be able to withstand the groundbreaking power, including additional pinion gears and five more clutch pack discs.

*Based on 2017 EPA group testing. EPA estimates not yet available. Actual mileage may vary. **2017 EPA estimated 30 mpg city/25 mpg hwy. Actual mileage may vary. ***2016 EPA estimated 19 mpg city/25 mpg hwy. Actual mileage may vary.

DODGE REBELLION -1966

FEEL IT COMING

CHARGER R/T SCAT PACK // Loaded with a legendary 392 HEMI® V8, this powerhouse unleashes 485 horsepower and 475 lb-ft of torque. Four-piston Brembo® brakes, 3-mode Electronic Stability Control (ESC)¹⁴¹ with Full-Off Mode, High-performance suspension with Bilstein® shocks, 20x9-inch wheels and available Three-Season Performance tires work together to bring top-shelf control. The interior merges retro styling with modern technology. Race-inspired seats feature the famed Scat Pack logo embroidered on either standard high-performance premium cloth or available Nappa leather trim with Alcantara® suede inserts. Standard on the R/T Scat Pack model, Dodge Performance Pages feature everything from Launch Control to a G-force meter to drag-race timers. This real-time data can also be displayed on either the 8.4-inch Uconnect® touchscreen or the standard seven-inch reconfigurable digital display nestled between the gauges. For an even greater degree of personalization, the Charger R/T Scat Pack customizable settings can be accessed through the standard Uconnect touchscreen that gives the driver the ability to adjust steering feel, transmission shift points and throttle response.



////// Charger R/T Scat Pack shown in Granite



DOMESTIC. NOT DOMESTICATED.



707

HORSEPOWER

In its own right, Dodge Charger makes a bold statement. Tag on three little letters to the nameplate and enthusiasts know there's an extra punch to its performance. Add an additional surname to the bundle and this vehicle's credentials are amplified even louder. Charger SRT[®] Hellcat ... the name says it all. With 707 horsepower, 650 lb-ft of torque, an 11.0 second NHRA-certified quarter-mile elapsed time on street tires, and 0 – 100 – 0 mph in under 13 seconds ... the numbers back it up.



////// Charger SRT Hellcat shown in White Knuckle.



///// CUT THE COMPETITION OFF AT THE KNEES



Program your driving experience and keep track of performance data via customizable SRT® Performance Pages. Everything from horsepower to G-force meter to drag-race timers to downloadable apps is right at your fingertips. This real-time data can be displayed on the seven-inch reconfigurable digital gauge cluster or on the 8.4-inch Uconnect® touchscreen.

At delivery, SRT Hellcat owners are handed both a Red and Black key fob. The Red unlocks the potential max horsepower while the Black enables more conservative performance.

The Bilstein® three-mode Adaptive Damping Suspension on Charger SRT Hellcat models provides

selectable driving dynamics settings that adjust shocks and transmission shifts to suit any drive — Street Mode (sporty) to Sport Mode (firm) to Track Mode (firmest, max handling).

These Drive Modes tailor the driving experience by controlling horsepower, transmission shift speeds, paddle shifters, traction control and suspension

Extensive wind tunnel and road testing helped create an engine cooling package that lets Charger SRT Hellcat challenge other driving experience.



MORE INTERIOR CHOICES FEATURED ON THE NEXT PAGE.

INTERIOR / CHOICES



Nappa leather trim/suede bolsters — Black



Nappa leather trim/suede bolsters — Black

Black/Ruby Red

- 1 // // // // Sedoso/Torque cloth with Tungsten accent stitching in Black — standard on SE and SE AWD
- 2 // // // // Sedoso/Torque Sport cloth with Tungsten accent stitching in Black/Tungsten (also available in Sedoso/Houndstooth with Tungsten accent stitching) — standard on SXT and R/T
- 3 // // // // Nappa leather trim with Sepia accent stitching and Nappa perforated inserts in Black/Pearl (also available in Black and Black/Ruby Red) — included with Plus Group and Premium Group on SXT, SXT AWD and R/T
- 4 // // // // Nappa leather trim with Alcantara® suede bolsters, Brazen Gold accent stitching, Alcantara perforated suede plow through inserts and smooth suede spine with embroidered Daytona logo in Black — standard on Daytona and Daytona 392
- 5 // // // // Sedoso/Ballistic Performance cloth with embroidered Bee logo and Tungsten accent stitching in Black — standard on R/T Scat Pack
- 6 // // // // Nappa leather trim with Alcantara suede bolsters, Ruby Red accent stitching and Alcantara perforated suede inserts with embroidered Bee logo in Black/Ruby Red (also available in Black) — optional on R/T Scat Pack
- 7 // // // // Premium Laguna leather with perforated leather inserts and embossed logo Performance seats in Sepia (also available in Black) — standard on SRT® 392 with SRT logo and SRT Hellcat with SRT Hellcat logo (Red seat belts available with Black leather)
- 8 // // // // Nappa leather with Alcantara suede bolsters, Alcantara perforated suede inserts and Tungsten accent stitching with embroidered logo Performance seats in Black (also available in Black/Ruby Red) — optional on SRT 392 with SRT logo and SRT Hellcat with SRT Hellcat logo (Red seat belts with Black/Ruby Red and available with Black leather)



COLOR:CHOICES

AVAILABLE ON ALL CHARGER AND CHALLENGER MODELS

1 // Pitch Black

2 // Redline 3K

3 // Billet

4 // Maximum Steel Metallic

5 // Granite

6 // Go Mango

7 // Destroyer Grey

8 // Confusion Blue

9 // TorRed

10 // Octane Red

11 // White Knuckle

Shown on other pages-

Yellow Jacket (shown on page 15)

Green Go* (shown on page 81)

*Late availability.

CHALLENGER /// WHEEL CHOICES


- 1 //// 18-inch Satin Carbon Aluminum (standard on SXT)
- 2 //// 20-inch Satin Carbon Aluminum (standard on R/T; included with Super Sport Group on SXT)
- 3 //// 20-inch Polished Aluminum with Gloss Black pockets and Satin finish (standard on R/T Shaker and R/T Plus Shaker)
- 4 //// 20-inch Classic II Polished Forged Aluminum (included with R/T Classic Package)
- 5 //// 20-inch Hyper Black Aluminum (standard on SXT Plus and R/T Plus; included with Super Track Pak on SXT and R/T)
- 6 //// 20-inch Gloss Black Aluminum (included with Blacktop Package on SXT, SXT Plus, R/T and R/T Plus)
- 7 //// 20x9-inch Polished Aluminum with Black pockets and Satin finish (standard on R/T Scat Pack and 392 HEMI® Scat Pack Shaker)
- 8 //// 20x9-inch Low-Gloss Granite Crystal Lightweight Forged Aluminum (standard on T/A and T/A Plus; optional on R/T, R/T Shaker, R/T Plus, R/T Plus Shaker, R/T Scat Pack and 392 HEMI Scat Pack Shaker)
- 9 //// 20x9.5-inch Low-Gloss Black Lightweight Forged Aluminum (standard on T/A 392)
- 10 //// 20x9.5-inch Hyper Black Lightweight Forged Aluminum (standard on SRT® 392)
- 11 //// 20x9.5-inch Low-Gloss Black Lightweight 5Deep Forged Aluminum (standard on SRT Hellcat)
- 12 //// 20x9.5-inch Brass Monkey [Dark Bronze] Lightweight Forged Aluminum (optional on SRT Hellcat)



CHARGER /// WHEEL CHOICES

- 1 // 17-inch Satin Silver Aluminum (standard on SE)
- 2 // 18-inch Satin Carbon Aluminum (standard on SXT)
- 3 // 19-inch Polished Aluminum with Graphite pockets (standard on SE AWD and SXT AWD models)
- 4 // 19-inch Hyper Black Aluminum (included with Rallye Group on SXT AWD)
- 5 // 20-inch Satin Carbon Aluminum (standard on R/T; included with Plus Group on SXT)
- 6 // 20-inch Polished Aluminum with Black pockets and Satin finish (included with Premium Group on SXT and R/T)
- 7 // 20-inch Classic II Polished Forged Aluminum (optional on R/T)
- 8 // 20-inch Hyper Black Aluminum (included with Rallye Group on SXT; optional on R/T; included with Plus Group on R/T)
- 9 // 20-inch Gloss Black Aluminum (included with Blacktop Package on SE, SXT and R/T)
- 10 // 20x9-inch Polished Aluminum with Black pockets and Satin finish (standard on R/T Scat Pack)
- 11 // 20x9-inch Low-Gloss Granite Crystal Lightweight Forged Aluminum (standard on Daytona; optional on R/T Scat Pack)
- 12 // 20x9.5-inch Low-Gloss Black Lightweight Forged Aluminum (standard on Daytona 392)
- 13 // 20x9.5-inch Hyper Black Lightweight Forged Aluminum (standard on SRT® 392)
- 14 // 20x9.5-inch Low-Gloss Black Lightweight 5Deep Forged Aluminum (standard on SRT Hellcat)
- 15 // 20x9.5-inch Brass Monkey [Dark Bronze] Lightweight Forged Aluminum (optional on SRT Hellcat)



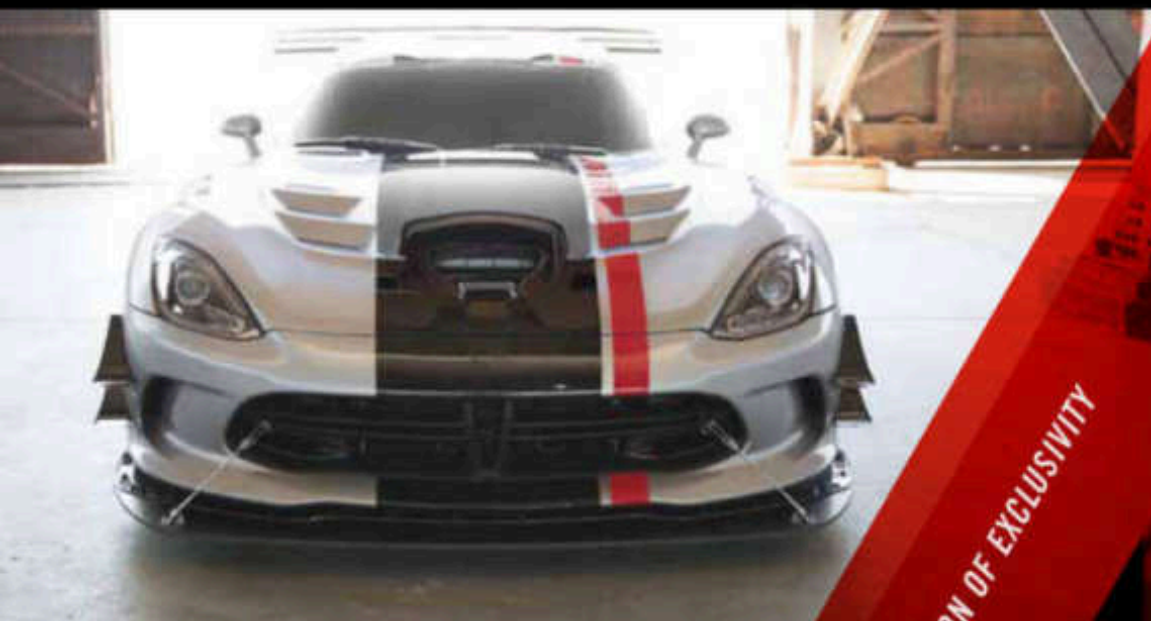


This is the real deal, handcrafted with an extreme level of detail straight from the factory. The 2017 Viper ACR has true racecar capability and is built for the weekend racer who wants the most extreme — but still street-legal — track car available.

This marvel harnesses its raw power from an all-aluminum, 645-horsepower, 600-lb-ft-of-torque, hand-built 8.4-liter V10 overhead-valve engine. Viper ACR sets itself apart with world-class aerodynamics and suspension, massive carbon ceramic Brembo® brakes with six-piston calipers and high-performance tires specifically designed for the vehicle. Delivering nearly 1 ton of downforce, 1.5-G cornering during high-speed turns and the ultimate in stopping performance with unprecedented brake-fade resistance, Viper ACR strikes fear in the competition. Unique exhaust tips on the side-mounted exhaust pipes help provide reduced exhaust pressure.

Each Viper is engineered to withstand severe track duty in ambient temperatures of 100 degrees Fahrenheit (with a professional driver). Power reaches the pavement through the standard TREMEC® six-speed manual transmission. Get all the jaw-dropping details on all Viper models at driveSRT.com





////// THE DEFINITION OF EXCLUSIVITY



Dodge Viper not only honors enthusiasts' desire for fierce power and performance, but feeds their appreciation for custom details and superior quality. The iconic, hand-built American supercar gives owners superior bragging rights: 1-of-1 exclusivity. This unprecedented level of uniqueness and personalization allows enthusiasts the ability to customize a 1-of-1 design from more than 50 million build combinations. Each custom-build starts with Viper GT content — then the choices are all yours. With 16,000 exterior color options, 48,000 custom stripe colors, 11 wheel options, 16 interior trims, seven aero wing assembly packages, three brake packages, four suspension options, and badging and a fuel filler door available in either Satin Chrome or Satin Black, and an also available anodized fuel filler door with the available Anodized Carbon Package, no two Vipers will be alike. To secure the rarity of each Snake, no two customers can order the same configuration, including color, in the same model year. Stitch-by-stitch, bolt-by-bolt and with every hand-painted exterior, Viper is truly one of a kind.

DESIGN YOURS AT driveSRT.com





LIMITED-EDITION ANNIVERSARY MODELS

When you routinely feast on asphalt for breakfast and chase it down with a straight shot of adrenaline, cake and ice cream make for a lackluster, borderline offensive, birthday celebration. No, the most reverent way to celebrate 25 years of exotic high-performance heritage — both on- and off-track — is with a four-pack of special editions that pay tribute to some of the most iconic Vipers in the nameplate's history.

Each limited-edition Viper model in the anniversary collection features a serialized instrument panel badge that includes model name and owner-name customization. Here's the quarter-century lineup:

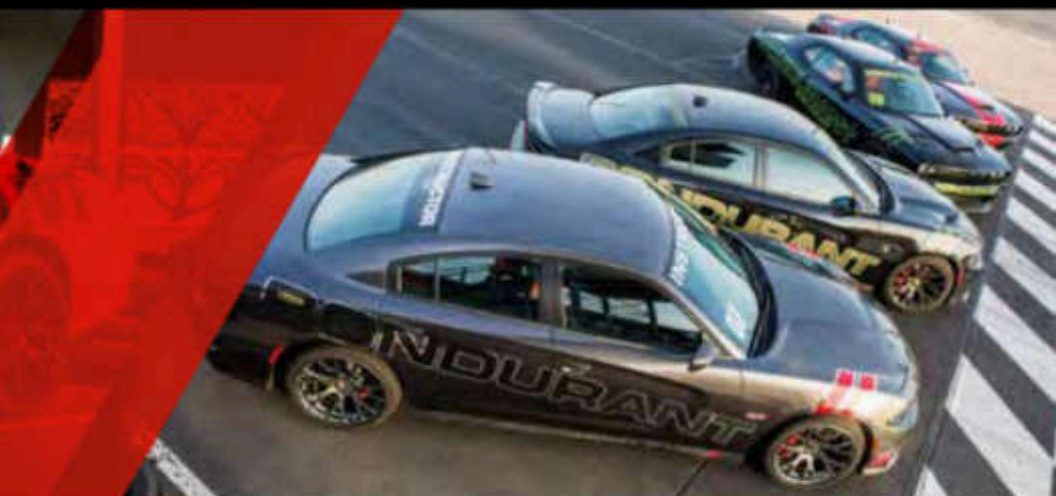
VIPER SNAKESKIN EDITION GTC // // // // The menacing Snakeskin Green exterior of this special edition is inspired by the original 2010 Viper Snakeskin ACR. Like its predecessor, one glance strikes desire in the soul of enthusiasts.

VIPER VOODOO II EDITION ACR // // // // It wasn't black magic that made the 2010 Viper Voodoo edition an automotive legend, it was vehemently tuned mechanics that had devotees clamoring.

VIPER GTS-R COMMEMORATIVE EDITION ACR // // // // Built to pay homage to one of the nameplate's most distinguishable and iconic paint schemes of all time — the 1998 White and Blue combination Viper GTS-R GT2 Championship Edition.

VIPER 1:28 EDITION ACR // // // // The name salutes the Viper ACR's single lap record of 1:28.65 set at the historic Laguna Seca Raceway in Monterey, California in October 2015.

For complete package content, see your Dodge dealer for details.



BONDURANT[®]

THE OFFICIAL RACING SCHOOL OF **DODGE** *SRT*





With great power comes great responsibility. This is exactly why each Dodge SRT® is built with a host of technologically advanced safety and security features. But there are still a few things that technology can't fix — knowing, understanding and fully appreciating the levels of performance that Dodge's modern

day marvels are capable of delivering. To that end, Dodge has created a new partnership, The Bob Bondurant® School of High-Performance Driving. For nearly 50 years, Bob Bondurant's method of training has served more than 500,000 drivers from around the world. We're tapping into that wealth of

knowledge and making Bondurant the official high-performance driving school of Dodge and SRT. Anyone who buys a vehicle from the SRT lineup will receive a one-day high-performance driving class, included with their purchase, where they'll learn new skills to backup their new hardware.

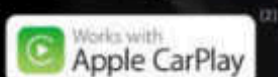


HERE'S WHAT YOU CAN DO. REMAIN FOCUSED ON THE ROAD WITH YOUR HANDS ON THE WHEEL, WHILE YOU COMMUNICATE, NAVIGATE AND STAY ENTERTAINED.

//// **LISTEN** to music, talk shows and sports. Access all genres, favorite artists, winning teams — all the time with SiriusXM® Satellite Radio™ //// **DISCOVER** new places, find the best shopping, dancing, entertainment venues and restaurants //// **SPEAK UP** and be heard, send and receive calls and texts™ while driving safely with hands-free phone capability™ //// **NAVIGATE** to every adventure, get turn-by-turn directions so you don't get lost on the way (unless you want to) //// **START** your car from afar, get your engine running, unlock your door or flash your headlamps from almost anywhere using your smartphone //// **SEE** into the future, hear weather and traffic reports* with a five-year trial subscription to SiriusXM Travel Link™ and SiriusXM Traffic™

APPLE CARPLAY™(2)

A smarter, safer way to use an iPhone® inside your vehicle and seamlessly integrate it with the Uconnect® touchscreen and Siri® voice control. You can make calls, access music, send and receive messages, get directions optimized for traffic conditions and more, while staying focused on the road.



ANDROID AUTO™(2)

Automatically provides a safer way to use Android while driving. Share information while you easily access the best of Google, maps with voice-guided navigation and play music, place phone calls or send and receive messages™ and ask Google search any question by voice command™



FIND OUT MORE AT DRIVEUCONNECT.COM

*Additional charges may apply.



SAFETY & SECURITY FEATURES

PARKSENSE® REAR PARK ASSIST™ //// When the vehicle is in Reverse, the system can sense objects at low speeds. When sensors detect objects in the back-up pathway, the system provides an audible and visual warning. Available on Challenger and Charger.

RAIN BRAKE SUPPORT //// When the windshield wipers have been activated, the system pulses the brake pads closer to the spinning rotors, helping to keep the rotors and pads dry for greater control and operator security. Standard on Challenger and Charger.

LANESENSE® LANE DEPARTURE WARNING (LDW) WITH LANE KEEP ASSIST™ //// Alerts and assists the driver; leverages electric power steering (EPS) to deliver subtle steering-wheel input when the system detects the need for course correction. Available on Charger.

BLIND SPOT MONITORING (BSM)™ WITH REAR CROSS-PATH DETECTION™ //// Dual radar sensors constantly monitor driver blind spots, providing notification of an encroaching vehicle via illuminating icons on the sideview mirrors and by audible chime. The system includes Rear Cross-Path Detection™ which monitors for vehicles and objects in perpendicular relationships to the vehicle while backing out of tight parking spots. Available on Challenger and Charger.

ADAPTIVE CRUISE CONTROL (ACC)™ // Helps maintain distance from the vehicle ahead. Available on Challenger. Under certain traffic conditions, Charger models with this system can bring the vehicle to a full stop without driver intervention.

FULL-SPEED FORWARD COLLISION WARNING (FCW) WITH ACTIVE BRAKING™ //// Radar and camera technology combine to help determine if frontal impact appears imminent; if so, the system prefills the brakes, then transmits audible and visual warnings for the driver to intervene. No driver response triggers brief brake application as a tactile alert. If the driver remains unresponsive and a frontal collision risk remains, brakes are applied to slow the vehicle before impact. The system can bring the vehicle to a full stop if speed is reduced below 20 mph. Available on Charger. Available with Challenger models, FCW™ system transmits audible and visual warnings. Warning sensitivity can be adjusted to driver preference.

PARKVIEW® REAR BACK-UP CAMERA™ //// This system displays an accurate visual reference of what is behind your vehicle when it's in Reverse. Available on Challenger and Charger.

ELECTRONIC STABILITY CONTROL (ESC)™ //// This system is designed to assist drivers in maintaining control of their vehicles during extreme steering maneuvers. ESC™ senses when a vehicle is starting to spin (oversteer) or plow (understeer), and attempts to correct the vehicle's course by automatically controlling the throttle and applying the brakes at individual wheels. Standard on Challenger and Charger.

READY ALERT BRAKING //// The system anticipates situations when the driver may initiate an emergency brake stop and uses the ESC™ pump to precharge the brake system in order to decrease the time required for full brake application. Standard on Challenger and Charger.

RAIN-SENSING WINDSHIELD WIPERS //// System sensors automatically detect moisture on the windshield and activate the wipers. Available on Challenger and Charger.



Dodge

DODGE

DODGE GEAR

DODGE.COM/LIFE // Check out an extensive line of gifts and gear for the Dodge enthusiast. From authentic apparel to die-cast replica cars for the collector, as well as electronics and office supplies, all lifestyle items are as bold as your Dodge vehicle. Refer to **dodge.com/life** for our full product lineup.

DODGE.COM/LIFE



////// Dodge Challenger SXT shown with Authentic Dodge Accessories by Mopar: Wide Center Racing Stripe Graphic, Hood Pin Kit, Black Chrome Grille Surround and 20-inch Black Envy Wheels.

////// **ALWAYS AT YOUR SERVICE.** The story of Mopar began nearly 80 years ago with a focus on motor parts and the introduction of a simple can of antifreeze. Through the decades, we have grown into so much more. Today, as the official service, parts and customer care provider for FCA US LLC Brand vehicles, we walk alongside you as your partner in the vehicle ownership experience. That's why we offer authentic parts and accessories designed by the same engineers that created your vehicle to make it truly yours. It's why our team is comprised of expert dealer technicians who know your make and model best, armed with leading-edge diagnostic technology no one else can match. And it's why we've created unique services like Mopar Owner Connect, Express Lane Service and Mopar Vehicle Protection® plans to offer convenience and peace of mind. In short, we are not only here to service cars, trucks, minivans and SUVs — we are here to service people's lives. It's this commitment that fuels who we are. And it's our promise to you that Mopar will always be at your service. See your dealer for the full line of Authentic Accessories available for your Dodge vehicle, or visit mopar.com

MOPAR ACCESSORIES ////

- Pistol Grip Short Handle (manual)
- Chrome Fuel Filler Door
- Cold Air Intake Kit



//// BUYER'S GUIDE — CHALLENGER

	100	101 PLUS	107	107 PLUS	107 SHOCKER	107 PLUS SHOCKER	107 SEAR PACKER	107 HORN (100) PACK SHOCKER	107 SEAR	107 HELLER
ENGINE AND TRANSMISSIONS										
2.4L Pentastar™ Variable Valve Timing (VVT) V6 with TorqueFlite® 8-speed automatic transmission	*	*								
2.7L HEMI VVT V6 with TREMEC® 8-speed manual transmission	*	*	*	*	*					
3.7L HEMI VVT V8 Fuel Saver Technology and Interactive Breakeaway Fuel Shut-Off (IBFO) with TorqueFlite 8-speed automatic transmission		0	0	0	0					
352-hp 3.6L HEMI V8 with TREMEC 8-speed manual transmission							*	*	*	
392-hp 3.6L HEMI VVT V8 with Fuel Saver Technology and TorqueFlite 8-speed automatic transmission							0	0	0	
Supercharged 4.7L 391 HEMI V8 with TREMEC high-performance 6-speed manual transmission										*
Supercharged 4.7L 391 HEMI V8 with TorqueFlite high-performance 8-speed automatic transmission										0
MECHANICAL FEATURES										
ALTERNATION — 100-amp										
— 180-amp (included with Cold Weather Group)	*	*	*	*	*	*	*	*	*	*
— 220-amp	*	*	*	*	*	*	*	*	*	*
AXLES — 150-mm rear										
— 230-mm rear	*	*	*	*	*	*	*	*	*	*
BATTERY — 700-amp, maintenance-free										
BRAKE SYSTEM — 4-wheel Antilock Brake System (ABS), All-Speed Traction Control, Electronic Brake Force Distribution (EBD) and Brake Assist										
— Sport Brake Package	*	*	*	*	*	*	*	*	*	*
— Performance Brake Package (included with Super Sport Group (SSG) or Super Track Pak)	*	*	*	*	*	*	*	*	*	*
— High-Performance Brake Package requires Super Track Pak		0	0	0	0	0				
— Brembo® 4-piston high-performance brake package	*	*	*	*	*	*	*	*	*	*
— Power 4-wheel disc brake system with 15.8-inch vented and slotted front rotors with 6-piston Race Brembo calipers and 13.9-inch vented and slotted rear rotors with 4-piston Race Brembo calipers	*	*	*	*	*	*	*	*	*	*
DIFFERENTIAL — 3.52 axle ratio (included with automatic transmission)										
— 2.52 axle ratio with heavy-duty anti-lag (included with automatic transmission)										*
— 3.37 axle ratio with anti-lag (included with automatic transmission)			*	*	*	*	*	*	*	*
— 2.95 axle ratio with anti-lag (included with automatic transmission)							*	*	*	*
— 2.70 axle ratio with heavy-duty anti-lag (included with manual transmission)							*	*	*	*
— 3.10 axle ratio with anti-lag (included with manual transmission)			*	*	*	*	*	*	*	*
ELECTRONIC STABILITY CONTROL (ESC) — Includes Brake Assist										
— Sport Mode	*	*	*	*	*	*	*	*	*	*
— 3-Mode (included with Super Track Pak)	*	*	*	*	*	*	*	*	*	*
— Configurable Street Modes	*	*	*	*	*	*	*	*	*	*
ENGINE BLOCK HEATER										
— 0, 1, 2, 3, 4, 5, 6, 7, 8, 9, 10, 11, 12, 13, 14, 15, 16, 17, 18, 19, 20, 21, 22, 23, 24, 25, 26, 27, 28, 29, 30, 31, 32, 33, 34, 35, 36, 37, 38, 39, 40, 41, 42, 43, 44, 45, 46, 47, 48, 49, 50, 51, 52, 53, 54, 55, 56, 57, 58, 59, 60, 61, 62, 63, 64, 65, 66, 67, 68, 69, 70, 71, 72, 73, 74, 75, 76, 77, 78, 79, 80, 81, 82, 83, 84, 85, 86, 87, 88, 89, 90, 91, 92, 93, 94, 95, 96, 97, 98, 99, 100	0	0	0	0	0	0	0	0	0	0
ENGINE COOLING — Heavy-duty										
— Service Duty 8	*	*	*	*	*	*	*	*	*	*
EXHAUST SYSTEM — Manifold steel dual with integrated bright tips										
— Active stainless steel performance dual with dual bright tips	*	*	*	*	*	*	*	*	*	*
— Active stainless steel performance dual with low-restriction turbo resonators, 2.75-inch-diameter piping with heat shield tips	*	*	*	*	*	*	*	*	*	*
FUEL TANK — 18.5-gallon										
MECHANICAL FEATURES (continued)										
INDUCTION — Cold-air										
— Wipers, cold-air, performance-tuned	*	*	*	*	*	*	*	*	*	*
— Mopar Shaker Hood Scoop with cold-air and Mopar Central Air Filter and Cold Air Intake Kit	*	*	*	*	*	*	*	*	*	*

	100	101 PLUS	107	107 PLUS	107 SHOCKER	107 PLUS SHOCKER	107 SEAR PACK	107 HORN (100) PACK SHOCKER	107 SEAR	107 HELLER
INTERCOOLER SYSTEM — Separate low-temperature cooling system with dual water-to-air intercoolers and a high-flow variable-speed electric water pump										
POWER ACCESSORY RELAY										
— Electronic, with charging wheel-mounted controls	*	*	*	*	*	*	*	*	*	*
— Adaptive Steer Control (ASC)™ (included with Technology Group)		P	P	P	P	P	P	P	P	P
STEERING — Electric power steering (EPS)										
— Performance (included with Super Track Pak)	*	*	*	*	*	*	*	*	*	*
— Performance-tuned rack and pinion with hydraulic power assist	*	*	*	*	*	*	*	*	*	*
SUSPENSION — Performance										
— Sport (included with Super Track Pak)	*	*	*	*	*	*	*	*	*	*
— High-performance	*	*	*	*	*	*	*	*	*	*
— 300-horse-hp Bilstein® 3-mode Adaptive Damping System, Auto Mode = sporty but compliant ride, Sport Mode = firm, maximum handling, Track Mode = firm, maximum handling plus performance shifting and gear-holding features	*	*	*	*	*	*	*	*	*	*
TOP START — Provides ignition from auto-cranking (included with automatic transmission)										
TRUNK RELEASE — Power release button on instrument panel										
— Internal emergency release inside trunk	*	*	*	*	*	*	*	*	*	*
EXTERIOR FEATURES										
AWING — ABS, integrated into rear window										
— Shark-fin-style roof (included with Shocker® 8.4-inch touchscreen navigation radio)	*	*	*	*	*	*	*	*	*	*
DOOR HANDLES — Body-color, features 100% 100% with illuminated entry										
FULL THROTTLE HOLD — Sport, automatic transmission with 100% throttle										
— John Bull with heritage "FULL" lettering (included with Blacktop Package or Seat Pack Appearance Group)	*	*	*	*	*	*	*	*	*	*
GLASS — Super-Control air windows										
GRILLS — Sport, 3-Color Chrome										
— Solid, Gloss Black (included with Blacktop Package, Shaker and Seat Pack Appearance Group)	*	*	*	*	*	*	*	*	*	*
— Black Buck-Ride	*	*	*	*	*	*	*	*	*	*
HORN — Double-bells with functional seats										
— Functional Shaker with cold-air induction	*	*	*	*	*	*	*	*	*	*
— Aluminum with center air intake, body color	*	*	*	*	*	*	*	*	*	*
— Aluminum with center air intake and dual heat exchangers, body color	*	*	*	*	*	*	*	*	*	*
— Aluminum with center air intake and dual heat exchangers, finished in Satin Black	*	*	*	*	*	*	*	*	*	0
LAMPS — Bilateral halogen projector headlights with dual fog lamps (LED optional)										
— Bilateral High Intensity Discharge (HID) headlights (included with Super Performance Group, 903 Class or Seat Pack Appearance Group)	*	*	*	*	*	*	*	*	*	*
— LED-illuminated daytime running lamps with park and turn indicators	*	*	*	*	*	*	*	*	*	*
— Bilateral HID headlights with integrated fog lamps	*	*	*	*	*	*	*	*	*	*
— Automatic headlights	*	*	*	*	*	*	*	*	*	*
— Auto High-Beam Headlamp Control (included with Technology Group)	*	*	*	*	*	*	*	*	*	*
— Satin LED-illuminated taillamps with Gloss Black trim (LED)	*	*	*	*	*	*	*	*	*	*
— Promotional hot staves (included with Blacktop Package)	*	*	*	*	*	*	*	*	*	*
EXTERIOR FEATURES (continued)										
MIRRORS — Power, body-color, manual folding, heated										
— Power, multi-function, heated foldaway (included with Super Performance Group)	*	*	*	*	*	*	*	*	*	*
REAR SPOILER — Body-color (included with Super Sport Group (SSG))										
— Body color with back-up camera™ (included with Super Track Pak)	*	*	*	*	*	*	*	*	*	*
— Black with back-up camera™ (included with Blacktop Package)	*	*	*	*	*	*	*	*	*	*
— John Bull with back-up camera™	*	*	*	*	*	*	*	*	*	*
— Body-color, semi with back-up camera™	*	*	*	*	*	*	*	*	*	*
— John Bull, high definition with back-up camera™	*	*	*	*	*	*	*	*	*	*
SHOULDER — Power, with 1-touch operation and seat heaters										
— 0, 1, 2, 3, 4, 5, 6, 7, 8, 9, 10, 11, 12, 13, 14, 15, 16, 17, 18, 19, 20, 21, 22, 23, 24, 25, 26, 27, 28, 29, 30, 31, 32, 33, 34, 35, 36, 37, 38, 39, 40, 41, 42, 43, 44, 45, 46, 47, 48, 49, 50, 51, 52, 53, 54, 55, 56, 57, 58, 59, 60, 61, 62, 63, 64, 65, 66, 67, 68, 69, 70, 71, 72, 73, 74, 75, 76, 77, 78, 79, 80, 81, 82, 83, 84, 85, 86, 87, 88, 89, 90, 91, 92, 93, 94, 95, 96, 97, 98, 99, 100	0	0	0	0	0	0	0	0	0	0

* = Included 0 = Optional P = Package

BUYER'S GUIDE — CHALLENGER
CONTINUED

	SE1	SE1 PLUS	SE1	SE1 PLUS	SE1 SEVEN	SE1 PLUS SHAKER	SE1 SEAT PACK	SE1 SEAT PACK SHAKER	SE1 SEAT	SE1 HALLMARK
TRUCK — F275/F350R4 All-Season Performance	*	*	*	*	*	*	*	*	*	*
— F250/F350R4 All-Season Performance included with Blacktop Package and Super Sport Crew Cab (S/C)	P	*	*	*	*	*	*	*	*	*
— F250/F350R4R All-Season Performance (includes Super Truck Pack)	0	0	0	0	0	*	*	*	*	*
— F250/F350R4R All-Season Performance included with Super Truck Pack	P	P	P	P	*	*	0			
— F225/F350R4R All-Season Performance										
— F275/F350R4R Summer High-Performance									0	0
— TRAC System, for brake and electric compressor, included with Premium Steel Group		P		P		P	*	*	*	*
— Spare, contact	*	*	*	*	*	*	*	*	*	*
WINDSHIELD — Power front 1-touch auto-down	*	*	*	*	*	*	*	*	*	*
— Rear window defrost	*	*	*	*	*	*	*	*	*	*
WINDSHIELD WIPERS — 2-speed with variable intermittent mode	*	*	*	*	*	*	*	*	*	*
— Rain-sensing (optional with Technology Group)		P		P		P	P	P	P	P
INTERIOR FEATURES										
SEAT HEADLES — Driver and passenger	*	*	*	*	*	*	*	*	*	*
CONSOLE CONSOLE — Full-length floor-mounted with cell phone storage and front and rear climate control outlets	*	*	*	*	*	*	*	*	*	*
— 10-watt power outlet, inside, driver and passenger side of console	*	*	*	*	*	*	*	*	*	*
— LED-illuminated cup holders	*	*	*	*	*	*	*	*	*	*
CLIMATE CONTROL — Dual-Zone Automatic Temperature Control (ATC) with front/rear passenger climate control outlets	*	*	*	*	*	*	*	*	*	*
DRIVE MODES — Power, sport, tow/haul towing	*	*	*	*	*	*	*	*	*	*
ELECTRONIC SELECT (INFORMATION CENTER, SEV) — Reconfigurable digital gauge cluster	*	*	*	*	*	*	*	*	*	*
FLOOR MATS — Luxury, front and rear	*	*	*	*	*	*	*	*	*	*
— Premium Saddle										
— Premium Red-Edge Seat Pack (included with Seat Pack Appearance Group)							P	P		
— Premium Black-Edge Seat Pack (included with Seat Pack Appearance Group in Blacktop Package)	P	P	P	P	P	P	P	P		
INSTRUMENT CLUSTER — 164-mph primary speedometer	*	*	*	*	*	*	*	*	*	*
— 160-mph primary speedometer										
— 200-mph primary speedometer with Red-Edge gauges	*	*	*	*	*	*	*	*	*	*
— Tachometer, engine temperature and fuel gauge	*	*	*	*	*	*	*	*	*	*
INTERIOR ACCENTS — Dark brushed aluminum	*	*	*	*	*	*	*	*	*	*
— Heavy Mesh aluminum (included with Seat Pack Appearance Group and Leather Interior Group)	*	*	*	*	*	*	P	P		
— Dark anodized aluminum	*	*	*	*	*	*	*	*	*	*
KEY FOB — Remote Start™, 5-Sp™, with illuminated entry	*	*	*	*	*	*	*	*	*	*
— Remote Start (included with Driver Convenience Group, requires automatic transmission)	P	P	P	P	P	P	P	P	P	P
INTERIOR FEATURES (optional)										
LIGHTING — front illuminated door pulls and rear courtesy lamps	*	*	*	*	*	*	*	*	*	*
— LED front map lamps	*	*	*	*	*	*	*	*	*	*
— LED rear courtesy reading lamps	*	*	*	*	*	*	*	*	*	*
— LED-illuminated door panel map pockets	*	*	*	*	*	*	*	*	*	*
— Glove box lamp	*	*	*	*	*	*	*	*	*	*
— Trunk lamp	*	*	*	*	*	*	*	*	*	*
WINDSHIELD — Rearview, auto-dimming with microfilm	*	*	*	*	*	*	*	*	*	*
WINDSHIELD — Black	*	*	*	*	*	*	*	*	*	*
— Bug	*	*	*	*	*	*	*	*	*	*
WHEEL FINISH — Leather-wrapped (included with automatic and manual transmissions)	*	*	*	*	*	*	*	*	*	*
STEERING COLUMN — 10/steering, manual	*	*	*	*	*	*	*	*	*	*
— 10/steering, power (included with Leather Interior Group)							P	P		
TELEPHONE WHEEL — Leather-wrapped with vehicle controls	*	*	*	*	*	*	*	*	*	*
— Performance leather-wrapped with vehicle controls (included with Blacktop Package and Seat Pack Appearance Group)	P	P	P	P	P	P	P	P		

	SE1	SE1 PLUS	SE1	SE1 PLUS	SE1 SEVEN	SE1 PLUS SHAKER	SE1 SEAT PACK	SE1 SEAT PACK SHAKER	SE1 SEAT	SE1 HALLMARK
— 101 performance leather-wrapped flat-bottom, 10-spoke										
— Heated (included with Leather Interior Group or Cold Weather Group)	P	*	P	*	*	*	*	*	*	*
— Sleeping, wheel-mounted paddle shifters (included with Super Seat Group (SSG) or Super Truck Pack, requires automatic transmission)	P	P	P	P	P	P	P	P	P	P
NON TOXIC — Dual air-vent, illuminated	*	*	*	*	*	*	*	*	*	*
SEAT BELTS — Black (included with Black/Metallic Red interior)	*	*	*	*	*	*	*	*	*	*
— Red (requires Black or Black/Metallic interior)									0	0
SEATS — Sport cloth	*	*	*	*	*	*	*	*	*	*
— Performance cloth										
— Race/Track Performance Cloth										
— Sport leather	*	*	*	*	*	*	*	*	*	*
— Sport leather	0	0								
— Performance leather/suede (included with R/T Class)			P	*	*	*	*	*	*	*
— Seat Pack Performance leather/suede (included with Leather Interior Group)										
— Performance Laguna leather with 101 legs										
— Performance Laguna leather with 101 metallic legs										
— Performance leather/suede with 101 metallic legs										0
— 3-way power driver's	*	*	*	*	*	*	*	*	*	*
— 4-way power lumbar adjuster	*	*	*	*	*	*	*	*	*	*
— Heated front (included with Cold Weather Group and Leather Interior Group)	P	P	P	P	P	P	P	P	P	P
— Heated and ventilated front (included with Leather Interior Group)										
— Front-passenger with easy rear-seat entrapment	*	*	*	*	*	*	*	*	*	*
— 60/40 split-folding rear bench with armrest and 2 cup holders	*	*	*	*	*	*	*	*	*	*
TRUCK — Illuminated carpeted compartment and carpeted decklid	*	*	*	*	*	*	*	*	*	*
UNIVERSAL GARAGE DOOR OPENER (included with Driver Convenience Group)	P	*	P	*	P	*	P	P	*	*
CONNECT™ MULTIMEDIA SYSTEMS										
CONNECT 3.0 — 3-inch touchscreen display with AM/FM radio, Bluetooth®	*	*	*	*	*	*	*	*	*	*
CONNECT 6.4 — AM/FM radio system with Apple CarPlay™ and Android Auto™, SiriusXM® Satellite Radio™ with 1-year trial subscription included, 8.4-inch touchscreen for displaying music, climate controls and vehicle information, Bluetooth and Bluetooth Streaming Audio	*	*	*	*	*	*	*	*	*	*
CONNECT 6.4 WITH NAVIGATION — AM/FM radio system with Apple CarPlay and Android Auto, SiriusXM Satellite Radio™ with 1-year trial subscription included, SiriusXM Travel Link™ and SiriusXM Traffic™ with 3-year trial subscription included, 8.4-inch touchscreen for displaying music, climate controls and vehicle information, Bluetooth and Bluetooth Streaming Audio	0	0	0	0	0	0	0	0	0	*
INTEGRATED VOICE COMMAND™ — Includes Bluetooth	*	*	*	*	*	*	*	*	*	*
MEDIA HUB — SD card slot, USB port and auxiliary jack located in center console	*	*	*	*	*	*	*	*	*	*
— 2 USB ports and auxiliary jack located in center console	*	*	*	*	*	*	*	*	*	*
SOUND SYSTEMS — 6 speakers	*	*	*	*	*	*	*	*	*	*
— 6 premium Alpine® speakers with 27A-watt digital amplifier (included with Sound Group)	P	*	P	*	P	*	P	*	P	*
— 3 premium Alpine speakers, including subwoofer and 300-watt digital amplifier (included with Sound Group II)	P	P	P	P	P	P	P	P	P	P
— 14 Harmoni Karver® high-performance speakers with 300-watt digital amplifier (included with Premium Sound Group)	P	P	P	P	P	P	P	P	P	*
SAFETY AND SECURITY										
ACTIVE HEAD RESTRAINTS™	*	*	*	*	*	*	*	*	*	*
ADAPTIVE CRUISE CONTROL (ACC) (included with Technology Group)	*	P	*	P	P	P	P	P	P	P

* = Included 0 = Optional P = Package

BUYER'S GUIDE — CHALLENGER
CONTINUED

	SEI	SEI PLUS	SEI	SEI PLUS	SEI SHIMMER	SEI PLUS SHIMMER	SEI SEAT PACK	SEI SEAT PACK PLUS SHIMMER	SEI SEI	SEI SHIMMER
AIR BAGS¹³ — Advanced multi-stage driver and front-passenger — Front and rear side-impact — Driver and front-passenger seat-mounted side (outer-thorax)	•	•	•	•	•	•	•	•	•	•
BLIND SPOT MONITORING (BSM)¹⁴ AND REAR CROSS-PATH DETECTION¹⁵ (included with Driver Convenience Group)	P	P	P	P	P	P	P	P	P	•
BRAKE ASSIST	•	•	•	•	•	•	•	•	•	•
BRAKE-PAK INTERLOCK (included with automatic transmission)	•	•	P	P	P	P	P	P	P	P
CHILD SEAT ANCHOR SYSTEM (LATCH)	•	•	•	•	•	•	•	•	•	•
CONSTANT-FORCE RETRACTIONS	•	•	•	•	•	•	•	•	•	•
ELC TRAC, STABILITY CONTROL (ESC)¹⁶ — Includes Brake Assist	•	•	•	•	•	•	•	•	•	•
EMERGENCY ASSIST (E-STOP) SYSTEM (SEAT)	•	•	•	•	•	•	•	•	•	•
FULL-SPEED FORWARD COLLISION WARNING (FCW) WITH ACTIVE BRAKING¹⁷ (included with Technology Group)		P		P	P	P	P	P	P	
HILL START ASSIST	•	•	•	•	•	•	•	•	•	•
PARKSENSE¹⁸ REAR PARK ASSIST SYSTEM¹⁹ (included with Super Track Pack or Driver Convenience Group)	P	•	P	•	•	•	•	•	•	•
PARKVIEW²⁰ REAR BACK-UP CAMERA²¹ (included with Super Track Pack)	P	•	P	•	•	•	•	•	•	•
RAIN BRAKE SUPPORT	•	•	•	•	•	•	•	•	•	•
READY ALERT BRAKING	•	•	•	•	•	•	•	•	•	•
SEAT BELTS	•	•	•	•	•	•	•	•	•	•
SECURITY ALARM	•	•	•	•	•	•	•	•	•	•
ENTRY KEYS²² — Activates engine immobilizer	•	•	•	•	•	•	•	•	•	•
TIRE PRESSURE MONITORING DISPLAY	•	•	•	•	•	•	•	•	•	•
SELECT PACKAGES										
BLACKTOP PACKAGE — Includes key fob (SEI only), Black grille with Challenger Blacktop badge, BlackKot stripe, Black fuel filler door, Black spoiler, 25-inch Black Black aluminum wheels with 275/45ZR20 Performance tires, Blacktop leg foot mats, Gloss Black interior accents and performance steering wheel	0	0	0	0						
COLD WEATHER GROUP — Includes 150-amp alternator, heated front seats and heated steering wheel	0		0							
DRIVE & DRIVE BLIND GROUP — Includes power multifunction sideview mirrors, High Intensity Discharge (HID) headlamps, ParkSense Rear Park Assist System ¹⁹ , BSM ¹⁴ and Rear Cross-Path Detection ¹⁵ , Remote Start System (automatic transmission only) and Universal Garage Door Opener	0	0	0	0	0	0	0	0		
LEATHER INTERIOR GROUP — Includes leather/steer-tinted seats, heated and ventilated front seats, heated steering wheel, Heated Mesh interior accents and power 10-speaker stereo system							0			
PREMIUM SOUND GROUP — Includes Harmon Karaoke 100-watt amplifier, 12 premium speakers and five vehicle fit satellite base fms	0		0		0	0	0			
RT CLASSIC PACKAGE — Performance Nappa leather and suede heated and ventilated front seats, dual RT Classic side stripes, HID headlamps, "Challenger" strip fender badge and 25-inch polished forged aluminum Classic II wheels					0					
SEAT PACK APPEARANCE GROUP — Black grille surround, Seat Pack Bundle Box rear stripe, HID headlamps, Black fuel filler door, Seat Pack logo embroidered seats, performance steering wheel, Heated Mesh interior accents and premium front seats							0	0		
SOUND GROUP — Includes 6 premium Home speakers and 275-watt amplifier	0		0		0					
SOUND GROUP E — Includes 9 premium amplified Alpine speakers with subwoofer and 500-watt amplifier (included with Sound Group II)			0		0	0	0	0		
SUPER SPORT GROUP (SEI-7) — Includes 23-inch aluminum wheels with P245/45R20 BSM Tirestone ²³ tires, 3.57 rear-axle ratio, decklid spoiler, steering wheel-mounted paddle shifters and 4-wheel air/flex disc performance brakes	0									

	SEI	SEI PLUS	SEI	SEI PLUS	SEI SHIMMER	SEI PLUS SHIMMER	SEI SEAT PACK	SEI SEAT PACK PLUS SHIMMER	SEI SEI	SEI SHIMMER
SUPER TRACK PACK — Includes performance 4-wheel disc brakes, sport suspension, performance steering, high-speed engine controller, 345/45ZR20 BSM tires, rear body-color spoiler, 20-inch Hyper Black aluminum wheels, ParkView Rear Back-Up Camera ²¹ , steering wheel-mounted shift controls, Badge Performance Pages	0	0	0	0	•	•				
TECHNOLOGY GROUP — Includes rain-sensing windshield wipers, Auto High-Beam Headlamp Control, FCM ²⁴ and ACC Stop ²⁵	0		0	0	0	0	0	0	0	

• = Included 0 = Optional P = Package

//// BUYER'S GUIDE — CHARGER

	SE	SAT	R/T	R/T SEAT PACK	SEV ² 332	SEV ² HIGHLIGHT
ENGINES AND TRANSMISSIONS						
3.6L Pentastar® Variable Valve Timing (VVT) V6 with 8-speed automatic transmission	*	*				
3.6L Pentastar VVT V6 with 8-speed automatic transmission and All-Wheel Drive (AWD) with front axle disconnect	0	0				
5.7L HEMI® VVT V8 with Fuel Saver Technology and interactive Deceleration Fuel Shut-Off (DFSO) with 8-speed automatic transmission			*			
292 HEMI V8 with Fuel Saver Technology and DFSO with 8-speed automatic transmission			*	*		
6.2L Supercharged HEMI V8 with 8-speed high-performance automatic transmission					*	*
MECHANICAL FEATURES						
AWD with active transfer case and front axle disconnect	0	0				
ALTERNATOR — 160-amp	*					
— 180-amp (included with AWD)		*P	*			
— 220-amp				*		
BATTERY — 730-amp maintenance-free	*	*	*	*	*	*
BRAKE ASSIST	*	*	*	*	*	*
— Advanced Brake Assist [®] (included with Technology Group or Premium Group, AWD Premium Group or AWD models)		P	P	P	P	
BRAKES — 4-wheel disc with vented front and solid rear discs, and All-Speed Traction Control	*	*				
— Brembo® 4-piston high-performance				*		
— 4-wheel anti-lock performance (included with AWD or Super Track Pak)	P	P	*			
— Brembo 6-piston high-performance				*	*	*
ELECTRONIC STABILITY CONTROL (ESC) [®]	*	*	*	*	*	*
— 7-Mode ESC [™] (included with Super Track Pak)		P	*	*	*	*
ENGINE BLOCK HEATER	0	0	0	0	0	0
ENGINE CONTROLLER — Base	*	*	*	*	*	*
— High-speed			*	*	*	*
ENGINE COOLING — Standard-duty	*	*	*	*	*	*
— Severe Duty II			*	*	*	*
REMOTE START SYSTEM (included with Popular Equipment Group)	P	*	*	*	*	*
SPORT MODE 2 (requires steering wheel-mounted paddle shifters, included with Rallye Group)		P	*	*	*	*
STEERING — Electric	*	*	*	*	*	*
— Performance-tuned			*	*	*	*
SUSPENSION — 4-wheel Tearing	*	*	*	*	*	*
— Sport			*	*	*	*
— Performance (included with Super Track Pak)		P	*	*	*	*
— High-performance			*	*	*	*
— Adaptive damping			*	*	*	*
— 3RT [™] Tuned Bilstein® 3-mode Adaptive Damping System, Auto Mode = sporty but compliant ride, Sport Mode = firm, maximum handling, Track Mode = firm, maximum handling plus performance shifting and gear-holding feature			*	*	*	*
TOP START	*	*	*	*	*	*
EXTERIOR FEATURES						
ANTENNAS — Integrated into rear window for AM/FM radio	*	*	*	*	*	*
— Integrated into roof shark for the satellite radio/navigation		*	*	*	*	*
DOOR HANDLES — Body-color	*	*	*	*	*	*
EXHAUST SYSTEM — Dual with bright tips	*	*	*	*	*	*
FUEL FILLER — Capless with remote fuel door release	*	*	*	*	*	*
FUEL TANK — 18.5-gallon	*	*	*	*	*	*

	SE	SAT	R/T	R/T SEAT PACK	SEV ² 332	SEV ² HIGHLIGHT
EXTERIOR FEATURES (continued)						
GLASS — Acoustic windshield and front side	*	*	*	*	*	*
— Solar-Guard [®] front and rear	*	*	*	*	*	*
GRILLE — Gloss Black with Satin Chrome crosshairs	*					
— Gloss Black with Gloss Black crosshairs (included with Blacktop Package)	P	*	*			
— Black with Honeycomb grid pattern				*	*	*
GLOSS BLACK FRONT FASCIA APPLIQUE (included with Rallye Group or Blacktop Package)	P	P	*			
HEADLAMPS — Auto High-Beam Headlamp Control (included with Premium Group or Technology Group, AWD Premium Group or AWD models)		P	P		P	
— Automatic	*	*	*	*	*	*
— Bidirectional halogen projector with LED accents	*	*	*	*	*	*
— Bidirectional High Intensity Discharge (HID) projector with LED accents (included with Plus Group, AWD Plus Group, Premium Group or Driver Confidence Group)		P	P	P		
— Dedicated Daytime	*	*	*	*	*	*
— LED fog lamps	*	*	*	*	*	*
— Projector LED fog lamps			*	*	*	*
MIRRORS — Body-color, manual folding, power adjusting	*	*	*	*	*	*
— Body-color, manual folding, power adjusting, heated		*	*	*	*	*
— Body-color, manual folding, power adjusting, heated, driver's side auto-dimming with memory and auto-adjust-in-Rearview (included with Plus Group and AWD Plus Group)	P	P	P	P		
— Body-color, manual folding, power adjusting, heated, driver's side auto-dimming with memory, auto-adjust-in-Rearview, courtesy lamps, and Blind Spot Monitoring (BSM) [®] and Rear Cross-Path Detection [™] (included with Technology Group or Premium Group, AWD Premium Group or AWD models)		P	P	P	*	*
— Body-color, manual folding, power adjusting, heated, driver's side auto-dimming with memory, courtesy lamps, and BSM [™] and Rear Cross-Path Detection [™] (included with Driver Confidence Group)	P	P	P	P		
SPOILER — Matte Black (included with Blacktop Package)	P	P	P	*		
— Rear, body-color (included with Rallye Group)		P	*			
— Body-color high-visibility			*	*	*	*
SUNROOF — Power, with 1-touch open/close feature (included with Power Sunroof Group)	P	0	0	0	0	0
TIRES — P215/65R17 85W Low-Rolling Resistance All-Season Touring	*	*	*	*	*	*
— P215/55R18 All-Season Performance		*	*	*	*	*
— P215/65R17 85W All-Season AWD (requires Rallye Group or SAT)	*	0				
— P215/55R19 85W All-Season Performance AWD		*	*	*	*	*
— P245/45R20 85W All-Season Performance (included with Plus Group, Premium Group, Blacktop Package or Super Track Pak)	P	P	*			
— P235/45R20 All-Season Performance (included with Super Track Pak)		P	*			
— P245/45R20 85W Performance		0	0			
— P275/40R20 All-Season Performance				*	*	*
— P275/40R20 P Zero Summer				0	0	
— Spare, compact	*	*	*	*	*	*
— Spare, compact (included with Plus Group, Premium Group, Blacktop Package or Rallye Group)	P	P	0/P			
— TireFit [™] system, tire sealant and electric compressor			*	*	*	*
WINDOWS — Power with driver's and front-passenger 1-touch auto-up/down, anti-pinch feature	*	*	*	*	*	*
WHEELS — Main-removal (included with Technology Group and Premium Group, All-Wheel Drive (AWD), Premium Group or AWD models)		P	P	P	P	
— Variable/intermittent	*	*	*	*	*	*

* = Included 0 = Optional P = Package

BUYER'S GUIDE — CHARGER CONTINUED

	LT	LXT	LX	LX+ SEAT PACK	LX+ SEAT	LX+ SEAT
INTERIOR FEATURES						
AIR CONDITIONING — Dual-Zone Automatic Temperature Control (ATC) with humidity sensor		*	*	*	*	*
— Dual-Zone Manual Temperature Control	*	*	*	*	*	*
AIR FILTERING	*	*	*	*	*	*
ASSIST HANDLES — Illuminated rear assist	*	*	*	*	*	*
— Passenger-side	*	*	*	*	*	*
CARGO — Cargo net and cargo compartment (350L) (18)	*	*	*	*	*	*
CUP HOLDERS — Illuminated front	*	*	*	*	*	*
— Illuminated rear (included with Plus Group, Premium Group, AWD Premium Group and AWD Plus Group; optional Nappa leather/suede-trimmed seats)	P	P	P	P	*	*
DEFROSTER — Rear window	*	*	*	*	*	*
DOOR LOCKS — Power, speed-sensitive	*	*	*	*	*	*
ELECTRONIC VEHICLE INFORMATION CENTER (EVIC) — Reconfigurable digital gauge cluster	*	*	*	*	*	*
FLOOR CONSOLE — Full-length, includes rear climate control outlets, storage and 12-volt power supply	*	*	*	*	*	*
FLOOR MATS — Front						0
— Rear						0
— Front and rear	*	*	*	*	*	*
— Luxury front and rear	*	*	*	*	*	*
INTERIOR ACCENTS — Dark Brushed II (included with Blacktop Package)	*	P	P	*	*	*
— Nectar Mesh	*	*	*	*	*	*
— Dark Chrome Trim	*	*	*	*	*	*
LIGHTING, INTERIOR — Driver and passenger lower ambient LED lamps (included with Plus Group and Premium Group)		P	P	*	*	*
— Front and rear LED map pockets	*	*	*	*	*	*
— Front and rear reading lamps, with map and courtesy lamps	*	*	*	*	*	*
— Front overhead LED lighting (included with Plus Group and Premium Group)		P	P	*	*	*
— Glove box	*	*	*	*	*	*
— Trunk lamp	*	*	*	*	*	*
MEMORY SYSTEM — Includes driver's seat, radio presets and exterior mirrors (included with leather/suede-trimmed seats, Plus Group, Premium Group, Technology Group, AWD Premium Group and AWD Plus Group)		P	P	P	*	*
MIRRORS — Rearview day/night	*	*	*	*	*	*
— Auto-dimming rearview	*	*	*	*	*	*
— Visor vanity, illuminated, driver and passenger sides	*	*	*	*	*	*
POWER OUTLETS — 12-volt, located in front shifter area, center console and rear of center console	*	*	*	*	*	*
SEATS — Cloth	*	*	*	*	*	*
— Sport cloth	*	*	*	*	*	*
— Roundstitch sport cloth	0	0				
— Performance cloth				*	*	*
— Sport leather (metallic bolsters) (included with Plus Group, Premium Group, AWD Plus Group and AWD Premium Group)		P	P			
— Sport leather (non-metallic bolsters) (included with Plus Group, Premium Group, AWD Plus Group and AWD Premium Group)		P	P			
— Leather/suede performance				0		
— Laguna leather with SRT Logo					*	*
— Laguna leather with SRT Helical Logo					*	*
— Leather/suede with SRT Logo				0		
— Leather/suede with SRT Helical Logo					0	0
— 8-way power driver's	*	*	*	*	*	*
— 8-way power driver's	*	*	*	*	*	*

	LT	LXT	LX	LX+ SEAT PACK	LX+ SEAT	LX+ SEAT
INTERIOR FEATURES (continued)						
— 8-way power driver's and front-passenger (included with Power Convenience Group, Plus Group, Premium Group, AWD Plus Group and AWD Premium Group)		P	P	*	*	P
— Power 4-way driver's lumbar adjuster	*	*	*	*	*	*
— Power 4-way driver's and passenger lumbar adjuster (included with Power Convenience Group, Plus Group and AWD Plus Group)		P	P	*	*	P
— Heated front (included with Nappa leather/suede-trimmed seats)	*	*	P	*	*	*
— Heated rear (included with Premium Group, Plus Group, AWD Premium Group, AWD Plus Group and leather/suede-trimmed seats)		P	P	P	*	*
— Ventilated front (included with Premium Group, Plus Group, AWD Premium Group, AWD Plus Group and leather/suede-trimmed seats)		P	P	P	*	*
— Rear 60/40 split-folding	*	*	*	*	*	*
SHIFT KNUB — Leather-wrapped	*	*	*	*	*	*
SPEED CONTROL — Electronic, steering wheel-mounted	*	*	*	*	*	*
— Adaptive Cruise Control with Stop (ACC Stop)™ (included with Technology Group, Premium Group or AWD Premium Group)		P	P	P	0	0
SPEEDOMETER — 140-mph	*	*	*	*	*	*
— 160-mph						
— 180-mph			*	*	*	*
— 200-mph						*
STEERING COLUMN — Power tilt/telescoping (included with Technology Group, Premium Group, AWD Premium Group and Power Convenience Group)		P	P	P	*	P
— Tilt/telescoping	*	*	*	*	*	*
STEERING WHEEL — Heated (included with leather/suede-trimmed seats, Plus Group, Premium Group, AWD Plus Group and AWD Premium Group)		P	P	P	*	*
— Leather-wrapped SRT	*	*	*	*	*	*
— Leather-wrapped Performance (included with Super Track Pak or Blacktop Package)		P	P	*	*	*
— Leather-wrapped	*	*	*	*	*	*
— With mounted audio controls	*	*	*	*	*	*
— With mounted paddle shifter (included with Rallye Group)		P	*	*	*	*
TEMPERATURE DISPLAY — Outside, located in EVIC	*	*	*	*	*	*
TRUNK LID RELEASE — Power	*	*	*	*	*	*
UNIVERSAL GARAGE DOOR OPENER — Programmable, 3-function remote for garage door, home lighting or security devices (included with Power Convenience Group)	P	*	*	*	*	*
UCONNECT® MULTIMEDIA SYSTEMS						
AUDIO SYSTEMS — 6 speakers	*	*	*	*	*	*
— 4 premium speakers with 276-watt amplifier		*	*	*	*	*
— 10 amplified speakers with 552-watt amplifier and subwoofer (included with BeatsAudio™ Group, Premium Group, Rallye Group and All-Wheel Drive (AWD) Premium Group)		P	P	P		
— 18 premium Harman Kardon® speakers with Harman Kardon GreenEdge™ amplifier (included with Harman Kardon Audio Group)					P	P
DUAL REMOTE CHARGING USB PORT	*	*	*	*	*	*
INTEGRATED VOICE COMMAND™	*	*	*	*	*	*
SIRIUSXM® SATELLITE RADIO™ — Includes 1-year trial subscription	0	*	*	*	*	*
MEDIA HUB — 30-pin aux, USB port and auxiliary jack located in center console (standard on SE)	*	*	*	*	*	*
— 2 USB ports and auxiliary jack located in center console (standard on all except SE)	*	*	*	*	*	*
UCONNECT 3.0 — AWP™/M-Driver™	*	*	*	*	*	*
UCONNECT 3.0 — AM/FM/HD radio system with Apple CarPlay™ and Android Auto™ SiriusXM Satellite Radio™ with 1-year trial subscription included, 8.4-inch touchscreen for displaying music, climate controls and vehicle information, Bluetooth and Start2Go Streaming Audio		*	*	*	*	*

* = Included 0 = Optional P = Package

	S1	SAT	P1	P1 SEAT PACK	S1P1 SEAT	S1P1 HILLARY
UCONNECT™ MULTIMEDIA SYSTEMS (continued)						
UCONNECT 8.4 WITH NAVIGATION — AM/FM/HD radio system with Apple CarPlay™ and Android Auto™, SiriusXM® Satellite Radio™ with 1-year trial subscription included, SiriusXM Travel Link™ and SiriusXM Traffic™ with 5-year trial subscription included, 8.4-inch touchscreen for displaying music, climate controls and vehicle information, Bluetooth® and Bluetooth Streaming Audio (included with Premium Group, AWD Premium Group and Navigation and Travel Group)		P	P	Q	*	*
SAFETY AND SECURITY						
ACTIVE HEAD RESTRAINTS ⁽¹⁾	*	*	*	*	*	*
AIR BAGS ⁽²⁾ — Advanced multi-stage front	*	*	*	*	*	*
— Supplemental front-seat-mounted side	*	*	*	*	*	*
— Supplemental side-curtain for front and rear outboard occupants	*	*	*	*	*	*
BLIND SPOT MONITORING (BSM) ⁽³⁾ WITH LANE CROSS-PATH DETECTION ⁽⁴⁾ (included with Premium Group, AWD Premium Group, Technology Group and Driver Confidence Group)	P	P	P	P	*	*
BRAKE ASSIST	*	*	*	*	*	*
BRAKE-PAK INTERLOCK	*	*	*	*	*	*
FULL-SPEED FORWARD COLLISION WARNING (FCW) with Active Braking ⁽⁵⁾ (included with Premium Group, AWD Premium Group and Technology Group)		P	P	P	P	P
HILL START ASSIST	*	*	*	*	*	*
LANESENSE™ LANE DEPARTURE WARNING (LDW) WITH LANE KEEP ASSIST ⁽⁶⁾ (included with Technology Group, Premium Group and AWD Premium Group)		P	P	P	P	P
PARKSENSE™ REAR PARK ASSIST SYSTEM ⁽⁷⁾ (includes with Popular Equipment Group, Plus Group, Premium Group, Driver Confidence Group, Popular Equipment Group, AWD Plus Group and AWD Premium Group)		P	P	P	*	*
PARKVIEW™ REAR BACK-UP CAMERA ⁽⁸⁾ (included with Driver Confidence Group, Navigation and Travel Group, Plus Group, Premium Group, AWD Plus Group and AWD Premium Group)			P	P	*	*
RAIN BRAKE SUPPORT	*	*	*	*	*	*
READY ALERT BRAKING	*	*	*	*	*	*
REMOTE KEYLESS ENTER™ N GO™	*	*	*	*	*	*
SEAT BELT ALERT — FRONT-PASSENGER	*	*	*	*	*	*
SECURITY ALARM	*	*	*	*	*	*
SENTRY KEY™ — Antitheft engine immobilizer	*	*	*	*	*	*
TIRE PRESSURE MONITORING SYSTEM	*	*	*	*	*	*
SELECT PACKAGES						
ALL-WHEEL DRIVE (AWD) PREMIUM GROUP — Includes Sport leather-trimmed ventilated seats, power 12-way driver and front-passenger seats with lumbar adjuster, heated rear seats, heated steering wheel, rear-seat armrest with storage and illuminated cup holders, power tilt/telescoping steering column, auto-dimming exterior driver's mirror, power, heated memory mirrors with manual foldaway, auto-adjust-in-Reverse exterior mirrors, memory system (driver's seat, mirrors and radio), rain-sensing windshield wipers, bifunctional High Intensity Discharge (HID) projector headlamps, security alarm, FCW with Active Braking ⁽⁵⁾ , Adaptive Cruise Control with Stop (ACC Stop) ⁽⁹⁾ , ParkSense Rear Park Assist System ⁽⁷⁾ , ParkView Rear Back-Up Camera ⁽⁸⁾ , BSM ⁽³⁾ and Rear Cross-Path Detection ⁽⁴⁾ , Uconnect 8.4 with Navigation, 10 speakers with subwoofer and 552-watt amplifier	Q	Q				
AWD PLUS GROUP — Includes Sport leather-trimmed, ventilated seats, 12-way power driver and front-passenger seats with lumbar adjuster, heated rear seats, rear-seat armrest with storage and illuminated cup holders, driver and passenger lower LED lamps, memory system (driver's seat, mirrors and radio), heated steering wheel, power, heated memory mirrors with manual foldaway, auto-adjust-in-Reverse exterior mirrors, bifunctional HID projector headlamps, security alarm, ParkSense Rear Park Assist System ⁽⁷⁾ and ParkView Rear Back-Up Camera ⁽⁸⁾	Q	Q				

	S1	SAT	P1	P1 SEAT PACK	S1P1 SEAT	S1P1 HILLARY
SELECT PACKAGES (continued)						
BEATSOUND™ GROUP — Includes 10 speakers with subwoofer and 552-watt amplifier			Q	Q		
BLACKTOP PACKAGE — Includes Satin Black rear spoiler, Gloss Black fascia applique, Black exterior badging, Gloss Black 20-inch aluminum wheels, Gloss Black instrument panel and cluster accents, performance steering wheel with paddle shifters and premium floor mats with Tufted stitching	Q	Q	Q			
DRIVER CONFIDENCE GROUP — Includes auto-dimming exterior driver's mirror, power, heated memory mirrors with manual foldaway, exterior mirrors with courtesy lamps, memory system (driver's seat, mirrors and radio), auto-adjust-in-Reverse exterior mirrors, ParkSense Rear Park Assist System ⁽⁷⁾ , BSM ⁽³⁾ and Rear Cross-Path Detection ⁽⁴⁾ systems		Q	Q	Q		
NAVIGATION™ AND TRAVEL GROUP — Includes GPS Navigation, Uconnect 8.4 with Navigation, AM/FM, SiriusXM Satellite Radio™ with Bluetooth, HD radio, SiriusXM Travel Link™, SiriusXM Traffic™, ParkView Rear Back-Up Camera ⁽⁸⁾ and 1-year SiriusXM™ trial subscription		Q	Q			
PLUS GROUP — Includes Sport leather-trimmed ventilated seats, 12-way power driver and front-passenger seats with lumbar adjuster, heated rear seats, rear-seat armrest with storage and illuminated cup holders, driver and passenger lower LED lamps, memory system (driver's seat, mirrors and radio), heated steering wheel, auto-dimming exterior driver's mirror, power, heated memory mirrors with manual foldaway, auto-adjust-in-Reverse exterior mirrors, bifunctional HID projector headlamps, security alarm, rear body-color spoiler, ParkSense Rear Park Assist System ⁽⁷⁾ and ParkView Rear Back-Up Camera ⁽⁸⁾ and 20-inch polished and painted aluminum wheels		Q	Q			
POPULAR EQUIPMENT GROUP — Includes SiriusXM Satellite Radio™ with 1-year trial subscription, remote start and ParkSense Rear Park Assist System ⁽⁷⁾	Q					
POWER SUNROOF GROUP — Includes power sunroof, rear body-color spoiler and universal garage door opener	Q					
PREMIUM GROUP — Includes Sport leather-trimmed ventilated seats, power 12-way driver and front-passenger seats with lumbar adjuster, heated 2nd-row seats, heated steering wheel, rear-seat armrest with storage and illuminated cup holders, power tilt/telescoping steering column, auto-dimming exterior driver's mirror, power heated memory mirrors with manual foldaway, auto-adjust-in-Reverse exterior mirrors, memory system (driver's seat, mirrors and radio), rain-sensing windshield wipers, bifunctional HID projector headlamps, security alarm, ACC Stop ⁽⁹⁾ , ParkSense Rear Park Assist System ⁽⁷⁾ , ParkView Rear Back-Up Camera ⁽⁸⁾ , BSM ⁽³⁾ and Rear Cross-Path Detection ⁽⁴⁾ , Uconnect 8.4 with Navigation, 10 speakers with subwoofer, 552-watt amplifier and 20-inch polished and painted aluminum wheels						Q
POWER SUNROOF GROUP — Includes 6-way power driver and front-passenger seats with 4-way lumbar adjuster and power tilt/telescoping steering column						Q
RALLYE GROUP — Includes Gloss Black fascia applique, R/T hood and appearance, Rallye badge, rear body-color spoiler, 300-hp power rating, steering wheel-mounted shift control, Sport Mode 2, 10 speakers with subwoofer, 552-watt amplifier, performance suspension, compact spare tire and 20-inch polished/painted aluminum wheels with P245/45R20 BSW All-Season tires on SRT AWD, 18-inch painted aluminum wheels with P235/55R18 BSW All-Season tires on SRT AWD	Q					
SUPER TRACK PAC — Includes 3-mode Electronic Stability Control (ESC) ⁽¹⁰⁾ performance brakes, performance suspension, 3.07 rear axle ratio, 345/45R20 All-Season performance tires, performance steering wheel and Dodge Performance Pages		Q				
TECHNOLOGY GROUP — Includes rain-sensing windshield wipers, power heated multi-function with memory, courtesy lamps and auto-dimming driver's mirror, ACC Stop ⁽⁹⁾ , LaneSense LDW ⁽¹¹⁾ , Auto High-Beam Headlamp Control, Full-Speed FCW with Active Braking ⁽⁵⁾ , Adaptive Brake Assist, BSM ⁽³⁾ and Rear Cross-Path Detection ⁽⁴⁾ , power, tilt/telescoping steering column and power adjustable pedals with memory, requires Driver Confidence Group and Nappa leather-/suede-trimmed seats			Q	Q		



DOMESTIC. NOT DOMESTICATED.

WARNING: Dodge is highly addictive.



5 YEAR/60,000 MILE**
POWERTRAIN LIMITED WARRANTY



[1] Requires a mobile phone equipped with the Bluetooth Hands-Free Profile. Visit UconnectPhone.com for system and device compatibility. [2] Apple CarPlay and Android Auto requires a compatible mobile device connected via USB cable to the Uconnect system. Data plan rates may apply. Visit UconnectPhone.com for system and device compatibility. [3] Voice Text Reply and Voice Calling features require a compatible mobile device enabled with Bluetooth Message Access Profile (MAP). iPhone and some other smartphones do not currently support Bluetooth MAP. Visit UconnectPhone.com for system and device compatibility. Ensure MAP is ON and incoming message notification is enabled. Vehicle must be registered for Uconnect Access and you must fulfill minimum subscription requirements. Also requires the use of a compatible smartphone that supports text messaging and Bluetooth. Visit UconnectPhone.com for system and device compatibility. [4] No system, no matter how sophisticated, can negate the laws of physics or overcome careless driving actions. Performance is limited by available traction, which snow, ice and other conditions can affect. When the ESC warning lamp flashes, the driver needs to use less throttle and adjust speed and driving behavior to prevailing road conditions. Always drive carefully, consistent with conditions. Always wear your seat belt. [5] SiriusXM subscriptions for audio and data services are sold by SiriusXM to follow your trial subscription. If you decide to continue listening after your trial, the subscription plan you choose will automatically renew thereafter and you will be charged according to your chosen payment method at their current rates. Fees and taxes apply. To cancel, you must call SiriusXM at 1-800-425-2345. See the SiriusXM Customer Agreement for complete terms and get more information at www.siriusxm.com. All fees and programming subject to change. Your equipment and features for SiriusXM services will vary depending upon the vehicle you select and may be limited in select markets. [6] Always look before proceeding, electronic drive aid is not a substitute for conscientious driving; always be aware of your surroundings. [7] LDCW is a driver convenience system, not a substitute for active driver involvement. The driver must remain aware of traffic conditions and be prepared to use brakes to avoid collisions. [8] Always check visually for vehicles prior to changing lanes. [9] ACC is a driver convenience system, not a substitute for active driver involvement. The driver must remain aware of traffic conditions and be prepared to use the brakes to avoid collisions. [10] FCW system is safety alert system for the front of the vehicle which does not take any actions to change the vehicle dynamics to avoid a collision and is not a substitute for active driver involvement. The driver must remain aware of traffic conditions and be prepared to use the brakes to avoid collisions. [11] Always sit properly with the head restraint properly adjusted. Never place anything in front of the head restraint. [12] The Advanced Front Air Bags in this vehicle are certified to the new U.S. federal regulations for Advanced Air Bags. Children 12 years old and younger should always ride buckled up in a rear seat. Infants in rear-facing child restraints should never ride in the front seat of a vehicle with a passenger front air bag. All occupants should always wear their lap and shoulder belts properly. [13] Trademarks. See dealer for complete details and a copy of the 5-Year/60,000-Mile Powertrain Limited Warranty.

©2016 FCA US LLC. All Rights Reserved. Dodge, Mopar, SRT, 392, HEMI, ACR, Blacktop, Challenger, Charger, the crosshair grille design, Durango, Grand Caravan, HEMI, Journey, Laramie, Mopar Vehicle Protection, ParkSense, ParkView, Pentastar, PT, the Scat Pack design, Sertifi by the SRT Hellcat design, XRT, TorqueFlite, Stronic, the Viper designs and Viper are registered trademarks, and Air Catcher, Keyless Entry™, Go, Scat Pack and SRT Hellcat are trademarks of FCA US LLC.

Alcantara is a registered trademark of Alcantara S.p.A. Alpine and the Alpine logo are registered trademarks of Alpine Electronics, Inc. BeatsAudio and Dr. Dre are trademarks of Beats Electronics, LLC. Bluetooth is a registered trademark of Bluetooth SIG, Inc. Barchart and the Barchart Racing School logo are registered trademarks of the Barchart Group. Brembo is a registered trademark of Brembo S.p.A. Bilstein is a registered trademark of August Bilstein GmbH & Co. Firestone is a registered trademark of Firestone Tire & Rubber Company. Goodyear is a registered trademark of The Goodyear Tire & Rubber Company. All rights reserved. Harsco Kardex is a registered trademark and GreenEdge is a trademark of Harsco International Industries, Inc. Apple CarPlay, iPod, iPhone and Siri are registered trademarks of Apple Inc. Series, M and all related marks and logos are trademarks of SiriusXM Radio Inc. and its subsidiaries. TREMEC is a registered trademark of Transmission T Equipment Manufacturers, S.A. de C.V. Facebook and logo are registered trademarks of Facebook, Inc. Michelin is a registered trademark of Michelin North America, Inc. Instagram and logo are registered trademarks of Instagram, Inc. Pandora is a registered trademark of Pandora Media, Inc. Pinterest and logo are registered trademarks of Pinterest, Inc. Pirelli is a registered trademark of Pirelli S.p.A. The Twitter logo is a service mark of Twitter, Inc. The YouTube logo, Android Auto logo and Google+ logo are registered trademarks of Google Inc.

Read this catalog, since the time of printing, some of the information you'll find in this catalog may have been updated. Ask your dealer for details. Some of the equipment shown or described throughout this catalog may be available at extra cost. Specifications, descriptions, illustrative materials and all competitive comparisons contained herein are as accurate as known at the time this publication was approved for printing. FCA US LLC reserves the right to discontinue models at any time or change specifications without notice or without incurring obligations. Some options may be required in combination with other options. For the price of the model with the equipment you desire, or verification of specifications contained here, see your Dodge dealer.

DODGE IS A REGISTERED TRADEMARK OF FCA US LLC.

DODGE 

DODGE CHALLENGER // // // CHARGER // // // VIPER // // // DODGE.COM // // // 800-4ADODGE