

We're  
covering  
new  
ground





**Covered.** *We covered new ground when we created Durango, and lots of folks noticed. People have responded passionately to the bold styling. Durango's capability in all driving situations earned it the 1998 "Four Wheeler of the Year" Award from Four Wheeler Magazine. And Durango received Strategic Vision's 1998 Total Quality Award™ for "Best Ownership Experience" in the Medium Sport Utility Vehicle class.*

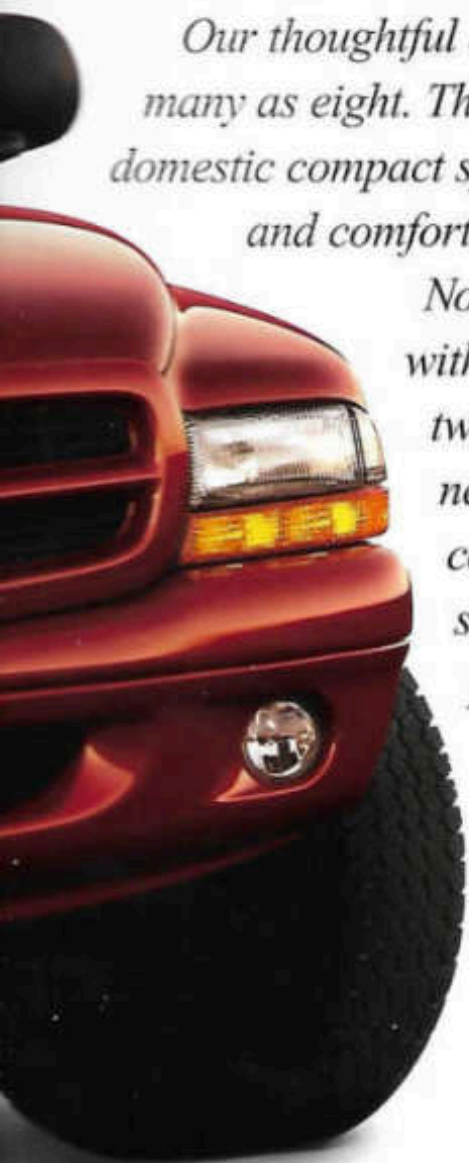


*Our thoughtful design gives Durango best-in-class seating for as many as eight. The longest wheelbase and widest track of any domestic compact sport utility vehicle are the foundation of a stable and comfortable ride.*

*Now we light out for new territory by offering Durango with standard Magnum® V6 power (late availability) or two Magnum V8 engines as available options. Also new are Durango's standard two-wheel-drive configuration and the standard five-passenger seating arrangement with 60/40 split-bench second seat.*



*Covering new ground is becoming a way of life for Durango.*







VE

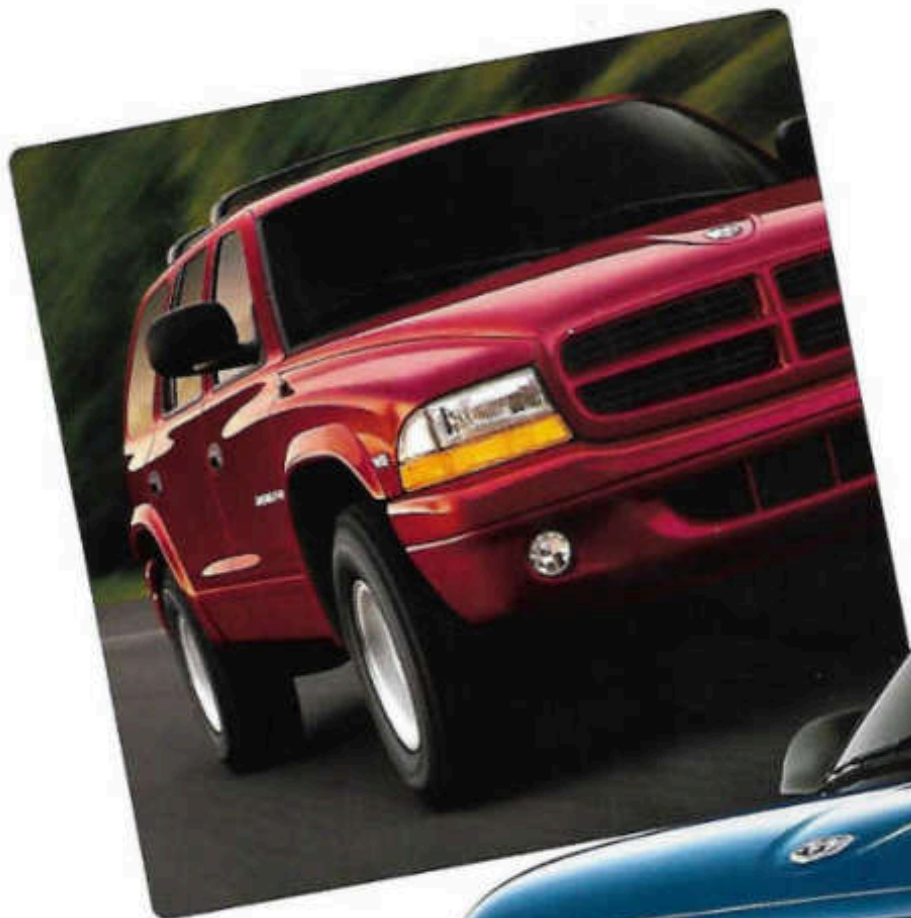
WRANGLER RT

WRANGLER RT'S  
GOODYEAR

# Mission



*Durango's independent front suspension is ready to deal with any and all bumps you encounter on- or off-pavement. Stabilizer bars and a sturdy cast (not stamped) lower suspension arm work with quick-ratio power steering to contribute to Durango's athletic moves.*



*Durango's S-shaped rear leaf spring suspension helps minimize the "crack the whip" effect vehicles experience in turns by improving the tracking of the rear wheels.*



*On four-wheel-drive models, the standard skid plate protects the*

*front suspension; available skid plates armor the 25-*



# Statement.

*Four-wheel drive: You can specify Durango with either part- or full-time four-wheel drive. Part-time means engaging the help of all four wheels in slippery or demanding circumstances. Full-time is "select it and forget it" four-wheel traction.*

*The Dodge/Skip Barber Driving School and the Skip Barber Racing School have chosen Dodge as the exclusive supplier of vehicles and engines for all of their teaching and racing operations. For information, call 1-800-221-1131, e-mail [speed@skipbarber.com](mailto:speed@skipbarber.com) or visit the Web site at [www.skipbarber.com](http://www.skipbarber.com).*





# Beneath that tough exterior, lies yet another tough exterior.

*Range has solid underpinnings. Seven crossmembers provide the rigidity a sport utility needs. For extra durability, some frame brackets are fabricated of 1000-psi steel. And the body that rides on this frame is plenty durable itself. All body panels except the roof are of galvanized steel, with key panels galvanized on both sides for extra corrosion resistance.*





*Doors are laser-welded for the precise joining of seams and for structural integrity that endures.*

*Computer-aided design wasn't just applied to Durango's sleek exterior; every panel benefitted.*



*Durango's body is electrocoated in a nine-step immersion process that first cleans it thoroughly, then covers it with a corrosion-resistant phosphate coating. Next we apply a base coat of epoxy polyester powder, followed by an anti-chip primer. This resilient foundation for subsequent color and sealer coats contributes to vehicle longevity.*



*Durango's ladder frame is made of boxed 35,000-psi steel with seven crossmembers, and is electrocoated with a corrosion-resistant paint that performs better than competitors' less durable hot wax coatings.*



*The fuel tank — biggest-in-class at 25 gallons — is mounted securely between the frame rails and ahead of the rear axle. Fuel lines are*

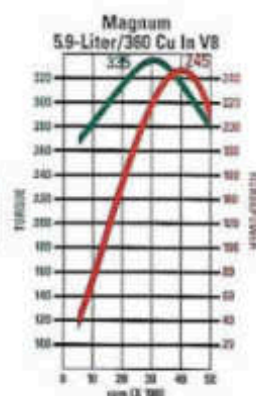
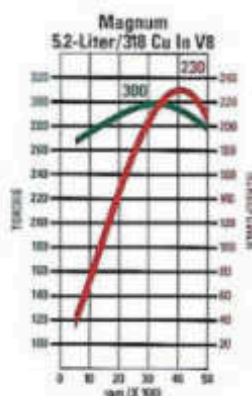
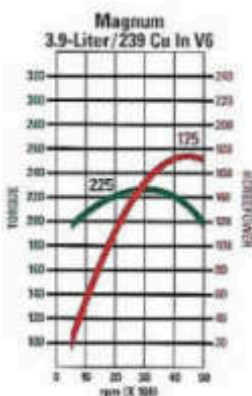
# Three go-to



# GUY'S.

## V8 MAGNUM

*Magnum® engines induce torrents of air to stream through the inlet valves and mingle with precisely measured droplets of fuel. When it comes to internal combustion, the more air, the better.*



*Durango's superiority among compact sport utility vehicles extends to the selection of three Magnum engines. Go to any one of them — the powerful new 3.9-liter V6 (late availability), proven 5.2-liter V8, or class-leading 5.9-liter V8 — for horsepower and torque in sufficient quantities to motivate Durango precisely to where you want to go.*





# Go. Go. Go.



# Do. Do. Do.



*Towing capacity is another way Durango's Magnum® power stands out. Pull as much as*

*4,500 pounds with the 3.9-liter V6. Specify the 5.2-liter V8 and that figure increases to 6,000 pounds. Or call upon the 5.9-liter V8 and hitch up to 7,600 pounds — best-in-class. With numbers like these, Durango rivals the capabilities of some full-size sport utility vehicles.*

*With folded rear seats, a nearly flat load space is readily achieved, yielding Durango's best-in-domestic-class 88 cubic feet of cargo space. The standard second-row 60/40 split-bench or the optional 40/20/40 second-row Fold-and-Tumble™ split-bench (included with optional third-row seat) make it easy to carry cargo, passengers, or a combination of both.*

*A new standard back panel 12-volt rear power outlet introduces a handy power supply for things like portable air compressors on camping trips.*



*Four cargo tie-downs make it easy to secure loads in the rear cargo area.*

1999 Durango Trailer Towing

Engine	Axle Ratio	Gross Combined Weight	Trailer Weight Allowance	
			4x2	4x4
3.9L V6 <sup>2</sup>	3.92	6,260 lb <sup>2</sup>	1,850 lb	4,500 lb
5.2L V8	3.55	9,200 lb	4,700 lb	4,400 lb
	3.92	10,500 lb	6,000 lb	5,700 lb
5.9L V8	3.55	10,500 lb	5,900 lb	5,700 lb
	3.92	12,200 lb	7,600 lb	7,400 lb

<sup>2</sup> Low availability.

Face it, you're a  
control freak.





**Power to please.**

Available six-way power bucket seat with four-way lumbar support lets the driver vary positions infinitely. (Enjoy standard leather seating surfaces like the one seen here when you choose Durango SLT Plus.)

...s within reach of the driver's left hand  
...itches for the standard power windows,  
...ing the one-touch-down left-front window.

...ontrols and instruments laid out so sensibly,  
...go helps you manage speed and distance  
...everything else. The speedometer receives  
...signals per mile from electronic sensors.



*The chips fall where they may help: Durango is endowed with three onboard computers. One regulates everything about the engine's combustion cycle.*

*Another regulates the braking. And the third turns interior lamps on and off, finds choice shifting points for the four-speed automatic transmission, and even does windows as it slightly speeds up the windshield wipers when Durango's velocity drops below 10 mph.*



*The command console of the optional eight-speaker Infinity® stereo with in-dash CD is more than capable. Light-emitting diodes glow warmly inside important control buttons and knobs. Audio buttons (not shown below) on the steering wheel are an option.*

*Infinity is a registered trademark of Infinity Systems, Inc.*







# Now you seat them.



*Durango's interior is adaptable. Have front bucket seats or carry up to eight people with the available front 40/20/40 split-bench, Fold-and-Tumble™ second seat, and available folding third-row seat. The rear portion of the roof rises 10 inches to provide more rear head room, and theater-style raised seating allows even third seat passengers to lean forward.*

*Available 40/20/40 Fold-and-Tumble™ second seat (which is supplied when the third seat is ordered) quickly converts to cargo area.*



*Available 40/20/40 front split-bench seat accommodates three people. When the center space is unoccupied, the armrest folds out, revealing a storage compartment with places for cassette tapes, cellular phone, and palmtop computer.*



***Bench strength:** With this standard 60/40 split-bench second seat, Durango takes on a permanent, five-passenger seating arrangement. There's nearly two inches more*

# Now you don't.



*g to serve: With either the standard 60/40 or available 40/20/40 second seat folded in segments, it's possible to  
a rear passenger and long items such as skis. With all rear seats folded flat, overall cargo space is a domestic  
n-class 88 cubic feet. With the second-row seat up, there's still a storage-unit-like amount of 51 cubic feet.  
de, a standard roof rack awaits the call to carry up to 150 pounds of extra gear.*

*The standard  
folding 60/40  
split-bench  
second  
seat readily  
responds to  
tugs on its release lever  
like a flat floor.*

*Get a grip!  
Assist handles for  
the front outboard  
passenger and  
d-seat outboard passengers  
sharing entries and exits.*



*Lifting and  
closing motions  
of Durango's tailgate  
are regulated by gas-pressurized struts. The rear opening provides easy  
access to the cargo area, and a step-under door height of six feet makes*

# Layaway plans.

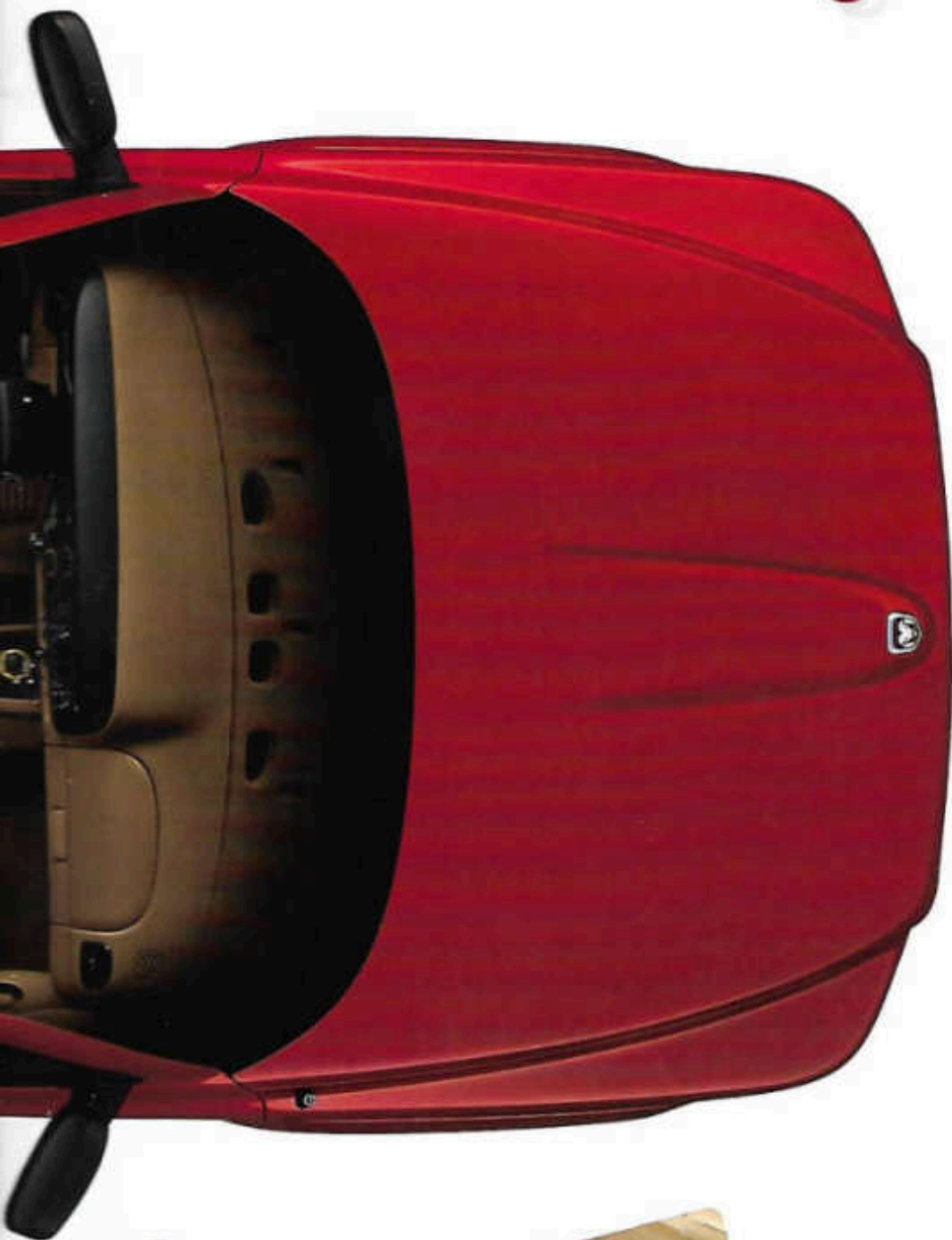


air. Second- and third-row  
seats are cooler when  
you turn on air conditioning.  
Durango's available rear  
headrest unit is equipped with  
independently adjustable  
heating and a dedicated four-  
stage blower.



*In a vehicle with theater-style seating, a good sound system is a natural addition. Durango SLT Plus offers an in-dash CD player, cassette player and eight Infinity® speakers at six strategic locations. New available steering wheel-mounted controls allow remote operation of most audio functions. And Durango's triple-sealed doors help keep away most outside noises.*

*A good share of the fun with your new Durango will come from deciding where to put stuff. Catcher's mitt? With this glove box, we aren't kidding around. Maps? Odds and ends? Carry-on bags? Relax, everything can fit with ten great locations to serve you.*



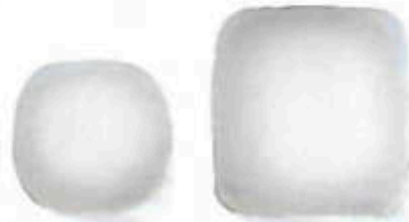
# 4x4-tificati



on.

Next Generation driver and front-passenger air bags,\* along with steel guard beams inserted in all four of the side doors, offer a reassuring reserve of passive safety. The standard Enhanced Accident Response System lights interior lamps and unlocks doors in the event of an accident that's severe enough to deploy the air bags and if the electrical system remains intact.

\* Certified to the Federal Regulations that allow less forceful air bags. Always use seat belts. Remember a backseat is the safest place for children.



**Durango accommodates every** outboard front- and second-row occupant, short or tall, with adjustable shoulder harnesses. Not only is a close-fitting belt more comfortable, but the wearer is more secure.



**Hit the panic button** on the key fob with the standard remote keyless entry system and the horn sounds and headlamps flash for a three-minute interval. Keyless entry also enables you to open only the driver's door first.



**With a high seating position** and large windshield, the Durango driver enjoys great forward visibility.



**The optional four-wheel antilock brakes** help maintain steering control during hard braking or on slippery surfaces.



DURANGO SLT



# Standard features and options.

## Dodge Durangos Include:

**Seats** — Next Generation driver and front-passenger  
**Conditioning** — Front, CFC-free refrigerant  
**Alternator** — 117-ampere  
**Instrument Panel** — Located in lower-center of instrument panel  
**Grab Handles** — Front and rear  
**Gear Ratio** — 3.55  
**Battery** — 800-ampere, maintenance-free  
**Clock** — Digital, integral to all radios  
**Console** — Floor, includes cup holders, storage armrest, coin holder, cassette and CD storage, tissue holder  
**Deluxe Convenience Group** — Speed control and tilt steering  
**Door Locks** — Power (included in Power Convenience Group)  
**Advanced Accident Response System** — Unlocks power door locks and interior lamps activate when air bags deploy and if electrical system is intact  
**Fuel Tank** — 25-gallon  
**Glass** — Tinted, all windows  
**Windshield** — Counterbalanced  
**Instrument Cluster** — Analog, includes speedometer, tachometer, gauges for oil pressure, engine coolant temperature, trip odometer, warning lamps for check engine, low oil pressure, low fuel, low washer fluid, air bag, ABS, seat belts, emission maintenance, 4WD part-time, 4WD full-time (on 4x4 models); and indicator lamps for high-beam headlamps, turn signals, liftgate ajar, door ajar and hazard flashers, and key-in-ignition/seat belt buzzer  
**Lighting Group** — Lamps for glove box, ashtray, engine compartment, immediate courtesy  
**Interior Lighting** — Interior, dual front reading lamps

**Mirrors** — Exterior, dual 5'x7" power fixed, black  
**Power Convenience Group** — Remote keyless entry, power windows and power door locks  
**Power Outlet** — Front and rear  
**Remote Keyless Entry System** — Includes panic alarm (included in Power Convenience Group)  
**Roof Rack** — 150-lb capacity  
**Seats**  
 Front Row — Bucket seats with head restraints, adjustable recliners, and front seatback map pockets  
 Second Row — 60/40 split-bench with center folding armrest  
**Skid Plate** — Front suspension (4x4 models only)  
**Speed Control** — Electronic with steering wheel-mounted controls (included in Deluxe Convenience Group)  
**Steering** — Power-assisted, rack-and-pinion (4x2); recirculating ball (4x4)  
**Steering Column** — Tilt  
**Storage** — 2 rear floor covered compartments (with two seat rows only)  
**Tire Carrier** — Underlung winch-type  
**Tires** — P235/75R15 OWL all-terrain  
**Transmission** — 4-speed automatic with overdrive  
**Transfer Case** — NV231 Part-time (4x4 models only)  
**Wheels** — 15'x7" forged aluminum  
**Windows** — Power (included in Power Convenience Group)  
**Wiper System**  
 — Two-speed intermittent  
 — Rear window wiper/washer intermittent

\* Certified to the Federal Regulations that allow less forceful air bags. Always use seat belts. Remember a backseat is the safest place for children.

## Features, options and package groups.

0 = Optional. • = Included.

		SLT	SLT Plus
<b>Engines</b>	<b>Transmissions</b>		
Magnum® V6*	4-speed auto	240	
4.0 Magnum V6	4-speed auto	260	26F
4.0 Magnum V6	4-speed auto	280	28F
Conditioning — Rear, CFC-free refrigerant		0	0
Gear Ratio — 3.92		0	0
Brakes — 4-wheel antilock		0	0
Differential — Limited-slip, rear		0	0
Engine Block Heater		0	0
Seat Mats — Front and second-row seating		0	•
Heavy-Duty Service Group — 136-ampere alternator, 750-ampere battery and maximum engine cooling		0	0
Leather Interior Group — Leather-trimmed seating, leather-wrapped steering wheel and suede door trim panels			•
Lighting			
Exterior			
Fog Lamps		0	•
Mirrors			
Exterior			
Dual 5'x7" heated power foldaway, black		0	0
Painting — Bodyside, black		0	
Protection Group 4x4 — Skid plates for fuel tank and transfer case (4x4 models only)		0	0
Seats			
Front Row			
Bucket seats with head restraints, adjustable recliners, and front seatback map pockets		•	•
60/40 split-bench seat with folding center storage armrest and integrated head restraints		0	
Power driver seat feature		0	•

	SLT	SLT Plus
Second Row		
— 60/40 split-bench with center folding armrest	•	•
— 40/20/40 split-bench seat with unique Fold-and-Tumble™ seat design (included when optional third seat is ordered)	0	0
Third Row		
— Two-seater bench seat which folds nearly flat	0	0
Security Group — Vehicle theft alarm	0	•
Audio Systems		
— AM/FM stereo radio with cassette player and 4 speakers	•	
— AM/FM stereo radio with combination cassette, CD, graphic equalizer	0	•
— Infinity® speaker system — 8 speakers in 6 locations	0	•
— Remote audio controls on steering wheel		•
— 31" x 10.5" OWL all-terrain™ (includes body-color wheel flares) (4x4 models only)	0	•
Roof Rack Prep Group — Platform hitch receiver with 7-way pin connector and 4-pin adapter	0	0
— Trailer Case — NV242 Full-time (4x4 models only)	0	0
— Wheel Covers — 15" x 5" cast aluminum (included with 31" x 10.5" tires*) (4x4 models only)	0	•

Infinity is a registered trademark of Infinity Systems, Inc. Ultrahide is a trademark of Chrysler Corporation. Fold-and-Tumble is a trademark of Chrysler Corporation. \*31" x 10.5" tires not available with 3.9L V6 engine.

## Dimensions



## Exterior Dimensions

Overall Length	193.5
Overall Width	71.7
Overall Height (4x2/4x4)	71.0/72.5
Wheelbase (4x2/4x4)	115.7/115.9

## Interior Dimensions (3 Rows of Seats)

Head Room	39.8
Leg Room	41.9
Shoulder Room	57.3
Hip Room	56.7
Seat Adjustment (fore and aft)	8.6
Second Row	
Head Room	40.6
Leg Room	35.4
Shoulder Room	57.5
Hip Room	56.0
Third Row	
Head Room	37.4
Leg Room	30.7
Shoulder Room	57.5
Hip Room	45.2
Trunk Volume (cubic feet)	
— All Seats Up	18.8

## Interior Dimensions (2 Rows of Seats)

<b>Front</b>	
— Head Room	39.8
— Leg Room	41.9
— Shoulder Room	57.3
— Hip Room	56.7
— Seat Adjustment (fore and aft)	8.6
<b>Second</b>	
— Head Room	40.4
— Leg Room	37.3
— Shoulder Room	57.5
— Hip Room	56.0

## Off Highway

	4x2	4x4
Running Ground Clearance	7.9	7.9
Approach Angle — Curb (degrees)	24.6°	28.4°
Breakover Angle — Curb (degrees)	20.2°	19.5°
Departure Angle — Curb (degrees)	24.0°	26.1°

## Weights and Capacities

	4x2	4x4
Gross Vehicle Weight Rating — GVWR (lbs)	6,050	6,400
Payload with 3.9L V6/5.2L V8/5.9L V8	1,790/1,656/1,619	1,887/1,745/1,721

# Colors, models, wheels, and trim.

## Models



*Flame Red*



*Chili Pepper Red Pearl Coat*



*Deep Amethyst Pearl Coat*



*Black*



*Bright White*



*Bright Platinum Metallic*



*Light Driftwood Satin Glow*



*Forest Green Pearl Coat*



*Intense Blue Pearl Coat*



*Patriot Blue Pearl Coat*



*Durango SLT Plus (4x4 model shown)*



*Durango SLT (4x4 model shown)*

## Wheels

A 15x7-inch forged aluminum wheels are standard.

B 15x8-inch cast aluminum wheels are optional on 4x4 models. (Standard on 4x4 SLT Plus models.)

A



B



## Fabric/Trim

Durango seat coverings are shown below on front bucket seats. They include leather, shown at left in Mist Gray, and also available in Agate and Camel. Niagara Cloth, shown at center in Camel, at right in Agate, and also available in Mist Gray.



# Dodge accessories from Mopar.



## **The Difference.**

Mopar accessories make all the difference as you tailor Durango to fit your needs.

Cargo tray

or floor mats molded for a precise fit. Roof racks and luggage carriers. Side steps and brush guards. All these and more are contained in the Durango Accessories catalog.

**Forks on the road.** Durango's standard roof rack serves as the base for the Sport Utility Bar and Fork-Mount Bike Carriers. Fit up to three bike carriers, each of which secures one bike by the rear wheel and front fork,



with a separate carrier for the detached front wheel.



**Mopar® running boards** ease cabin entry and exit. They also make it a snap to reach the standard roof rack.

**Full face protection.** Front-End



Cover with Bug Screen protects against damage

caused by gravel, or that unavoidable piece of debris, or things that go splat in the night. Or all of the above. Bug Screen stretches across grille area for added protection.

# We'd like to continue this relationship.

Call Us At: 1-800-4-A-DODGE  
Talk to someone who can tell  
you what you want to know about  
the 1999 Dodge lineup. You can  
order product literature, get the  
price of a vehicle equipped the way  
you like it, and find the Dodge  
dealer closest to you.

On the Web: [www.4adodge.com](http://www.4adodge.com)  
The award-winning Dodge Web site  
provides you with an information  
source you can access directly  
24 hours a day from the comfort  
of your home or office. Pricing,  
competitive comparisons, and dealer  
information are just a click away.

## CustomerOne<sup>®</sup>★

Chrysler Corporation and its  
dealers have made a long-term  
commitment to outstanding  
customer service. More than  
100,000 dealership management,  
sales and service people are  
participating in the most extensive  
educational initiative in automotive  
history. It's called Customer One  
and it establishes one unbreakable  
rule: Treat every customer with the  
honesty and respect they deserve.

**3/36 Customer One Care<sup>™</sup> Plan**  
Your Dodge vehicle is covered  
by Chrysler Corporation's 3/36  
Customer One Care Plan.\*

### CustomerOne e Care<sup>™</sup>

3/36 Bumper-To-Bumper

24-Hour Roadside Assistance

This  
coverage  
includes  
a 3-year  
or 36,000-

mile Bumper-To-Bumper Limited  
Warranty as well as roadside  
assistance for 3 years or 36,000  
miles. Call 1-800-521-2779 for  
24-hour, 7-day-a-week emergency  
road service.<sup>†</sup> A 5-year or 100,000-  
mile Outer-Panel Rust-Through  
Limited Warranty covers the repair  
of exterior sheet metal if perforated  
by corrosion. Restrictions apply.  
See your dealer for details.

\*Excludes wiper blades, clutch and brake linings, brake rotors  
and drums, normal maintenance items and tires (covered by their  
own manufacturer's warranty).  
<sup>†</sup>Road service provided by Cross Country Motor Club, Inc.  
(In California, Cross Country Motor Club of California, Inc.)



CHRYSLER

# Service Contracts

Be Serious About Service

Additional protection for Dodge owners is available through optional Chrysler Service Contracts. These service plans are available in a variety of time and mileage combinations to meet your driving needs. Ask your dealer for more information or call 1-800-442-2666.

**Mopar.** To keep your CUSTOMER CARE Dodge vehicle performing at its optimum, make sure it's serviced regularly at your Dodge dealership, where highly-trained technicians have access to a complete stock of Mopar replacement parts and the sophisticated equipment today's cars demand.

## CHRYSLER FINANCIAL Chrysler Financial\*

offers a full range of automotive financing which provides flexible terms for qualified buyers. Many of these plans can be customized to fit your particular budget and make your new vehicle even more affordable. They include the College Graduate Program and Gold Key Lease short-term financing. Ask your Sales Consultant for details.

\* Chrysler Financial's programs are offered subject to availability and state and local laws.

### Chrysler Lease Plans

Chrysler Financial's Gold Key Lease has the flexibility to fit your vehicle choice and your lifestyle. If the idea of driving a new vehicle more often without penalties sounds great, ask about Gold Key Lease.

## ON THE JOB Commercial operators of eligible

Dodge cars, trucks, and vans can learn about our Dodge "On The Job" program by calling 1-877-ON THE JOB.

### Commercial Finance Options

Chrysler Financial's new Commercial Finance Options Program offers special finance and lease options to small and midsize businesses, municipalities, and small fleet operators. "Line of Credit" financing is also available under this program. Please see your dealer for details.

 Cash reimbursement is available for qualified adaptive driving devices on 1999 Dodge vehicles. Ask your dealer or call Automobility Headquarters at 1-800-255-9877.

Printed in U.S.A. on recycled paper.  
8/98 74-383-9922 900M



# The New Dodge

# We're all about change.

*There is no status quo at Dodge. We've transformed the way people drive with new kinds of vehicles that are an embodiment of the latest technologies. Alternate fuels, exotic materials, and new configurations are constantly being explored. Advances in safety technology, suspension systems, engine dynamics, and ergonomics are continually evaluated. Because we know that no matter how fast things change these days, people still want cars and trucks that are good looking, well-built, and exciting to drive. And to ensure that you get all the information you need to make an intelligent purchase, there are automotive experts awaiting your call at 1-800-4-A-DODGE. We've also created a Web site you can visit at anytime from anywhere in the world at: [www.4adodge.com](http://www.4adodge.com).*



The New Dodge