

2017 DODGE DURANGO





This is the Brand our grandparents drove. It's the Brand that started with humble beginnings but now boasts intense horsepower ratings and must-have technology. It's the Brand that doles out both style and power, and never makes you choose between the two. With more than 100 years under their belts, each vehicle in the 2017 Dodge lineup pays homage to its iconic bloodline with

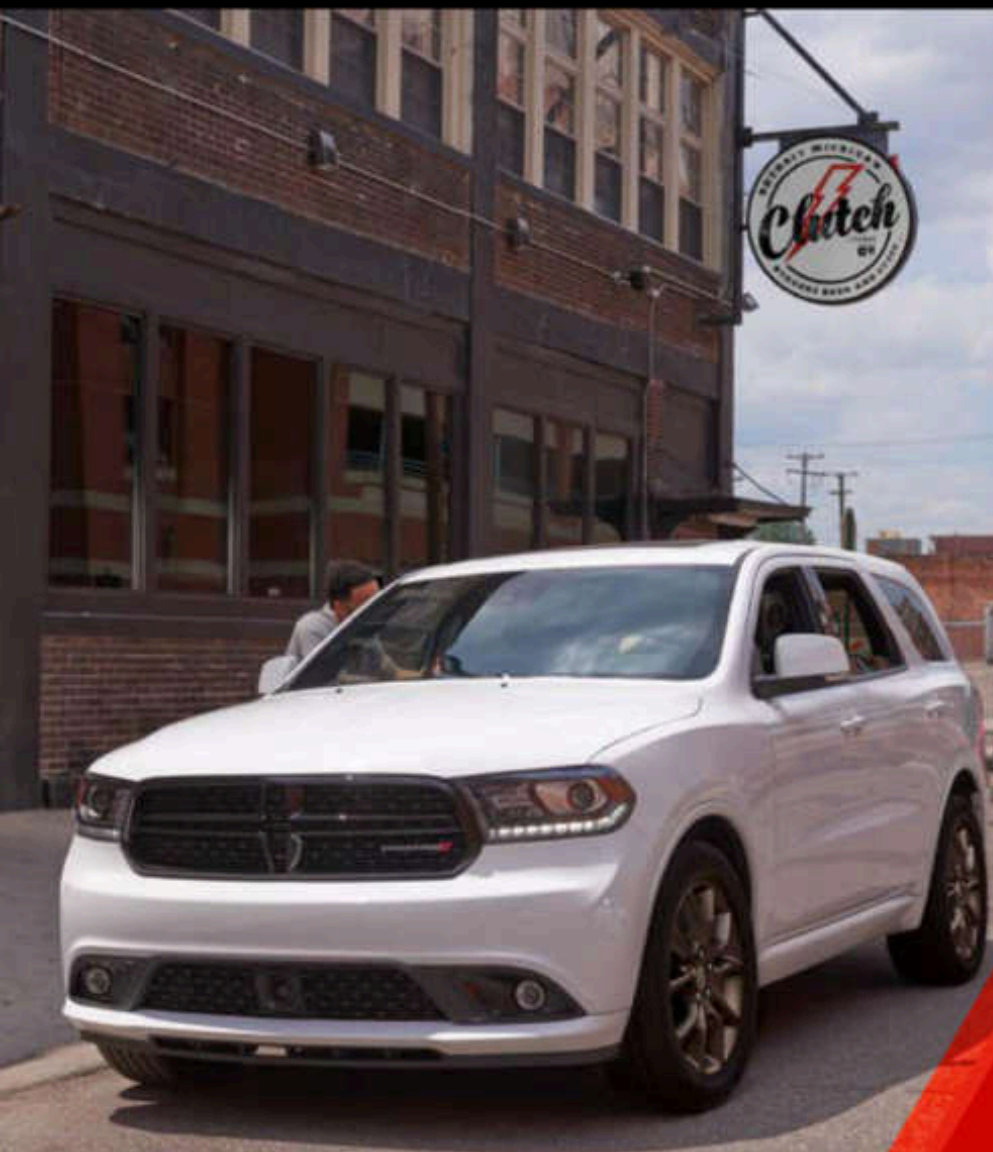
award-winning features and superior craftsmanship. The powerful engines and bold exteriors of each vehicle beg to be taken out on the open road. The Dodge name continues to live on with the same determination that the Dodge brothers had when first creating the Brand. It's time to put the pedal to the metal and live fast.

DOMESTIC. NOT DOMESTICATED.

DODGE



2017 DODGE DURANGO



////// Durango R/T shown in White Knuckle with Brass Monkey Appearance Package.

Compromise. Sometimes that can be as bad as a four-letter word. At least that's how Dodge engineers see it. That's why Durango was created with an innate stubbornness. Under no circumstances do we believe impressive fuel efficiency — up to 26 mpg hwy* — means sacrificing power. That spacious available seven-passenger seating means your gear feels the crush. Or that a vehicle with utility in its name can't coexist with plush, upscale interior details. When push comes to shove, Durango is all in with an incredible amount of horsepower capable of pulling an equally incredible towing rating, and plenty of technology to keep you entertained and connected, mile after mile. Without apologies, this is the 2017 Dodge Durango.

*EPA estimated 19 mpg city/26 mpg highway with 3.6-liter engine (RWD), when properly equipped. Actual mileage may vary.



THE 7-SEAT CHARGER

DODGE DNA RUNS DEEP // Its capability and roominess qualify Durango as an SUV. But the available HEMI® engine under the hood gives it the iconic soul of a Dodge muscle car and churns out best-in-class V8 power!^{13*} The raw power lurking underneath isn't the only thing that separates Durango from the pack. Durango's armor is forged to highlight its athletic profile. It starts with a fierce split-crosshair grille filled with a modern mesh texture and a bulked-up hood with a powerful-looking profile. Striking projector headlamps with embossed Dodge logo, projector fog lamps and available LED daytime running lamps (DRLs) shine like crown jewels. Light up the night with a full-width LED racetrack taillamp and opt for available dual bright exhaust tips that remind those behind you why you're out in front.

//// Durango R/T shown in Bruiser Grey.

*A note about this brochure: all disclaimers and disclosures can be found on page 24.

GET PERSONAL

ALL SYSTEMS: GO // Every Durango model features a standard seven-inch reconfigurable digital gauge cluster. From here you get real-time information on performance, available navigation and vehicle status in full color and with rich graphics. The customization is near limitless and programmable by you.

UCONNECT® SYSTEM // Engineered with technology, Uconnect brings a range of communication and entertainment services directly to Durango. Intuitive and customizable, available Uconnect systems include a touchscreen display up to 8.4 inches and steering wheel-mounted controls that operate features like a Bluetooth-enabled phone, Voice Command™ 3D navigation, HD radio, cruise control and more. Visit driveuconnect.com for a list of available options.





REAR-SEAT ENTERTAINMENT // Opt for the Blu-ray™/DVD system and entertain rear-seat passengers via two nine-inch screens. The system keeps the peace between movie buffs and gaming fanatics with rear-seat HDMI/USB ports that let passengers tap into the entertainment system and use each screen independently of each other.

GET THE JAMS PUMPIN' // Opt for Beats™ Premium Audio and experience meticulously tuned music the way the artist intended it to be heard. The available system includes an additional 50 watts of power per channel, nine premium speakers, a 506-watt amplifier and a subwoofer.



//// Durango Citadel shown with Anodized Platinum Appearance Package (late availability).



SEATING AND STORAGE **FOR MILES**

All up, all down or someplace in between — somewhere in Durango's 50 different seating configurations you're sure to find your sweet spot. Available seven-passenger seating includes a fold-flat front-passenger seat, 60/40 split-fold-flat second-row reclining bench seat with integrated padded center armrest with cup holders, and 50/50 split-folding third-row seats. Opt for cloth or heated leather-trimmed fold-flat second-row Captain's Chairs with soft-touch armrests and a floor-mounted mini console with cup holders for six-passenger seating.

////// Durango Citadel shown with Anodized Platinum Appearance Package (late availability).



//// Durango Citadel shown with Anodized Platinum Appearance Package (late availability).

IMPRESSIVE POWER //// BEST-IN-CLASS^{***} TOWING
TOTALLY PUMPED UP



////// Durango R/T in Blu By You towing a classic 1970 Dodge Challenger T/A.

Property Images © 2016

AWARD

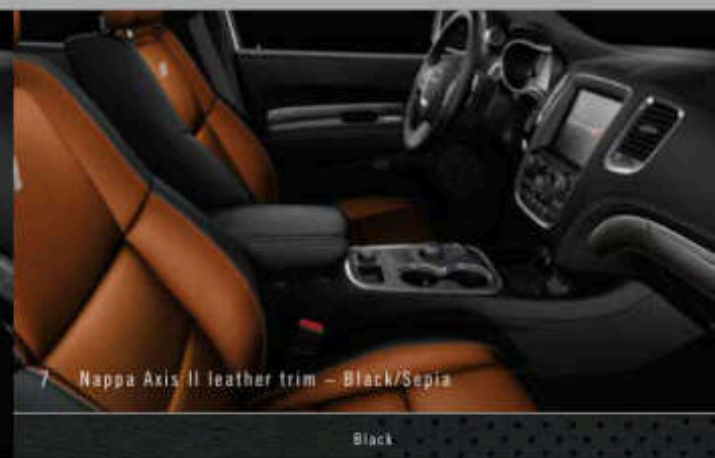
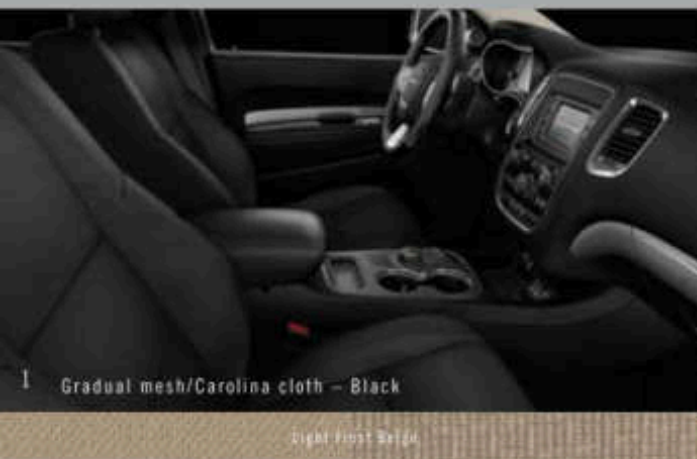


NICE TRY, MOTHER NATURE. NICE TRY.



ALL-WHEEL DRIVE (AWD) // Durango was designed for uncompromising and refined performance even in the worst conditions. Forge on in confidence with available AWD. The system helps enhance driver confidence by leveraging the SUV's 50/50 weight distribution. Durango offers two AWD systems — one for the HEMI® V8 and one for the Pentastar® V6-powered models — each one greatly enhances the vehicle's traction and handling by delivering a smooth driving experience over a wide range of road conditions. On V8 models, AWD includes a low range on the transfer case for extreme 4x4 situations.

// Durango Citadel shown in Granite with Anodized Platinum Appearance Package.



MORE INTERIOR CHOICES FEATURED ON THE NEXT PAGE.



4 Nappa Axis II leather trim — Radar Red

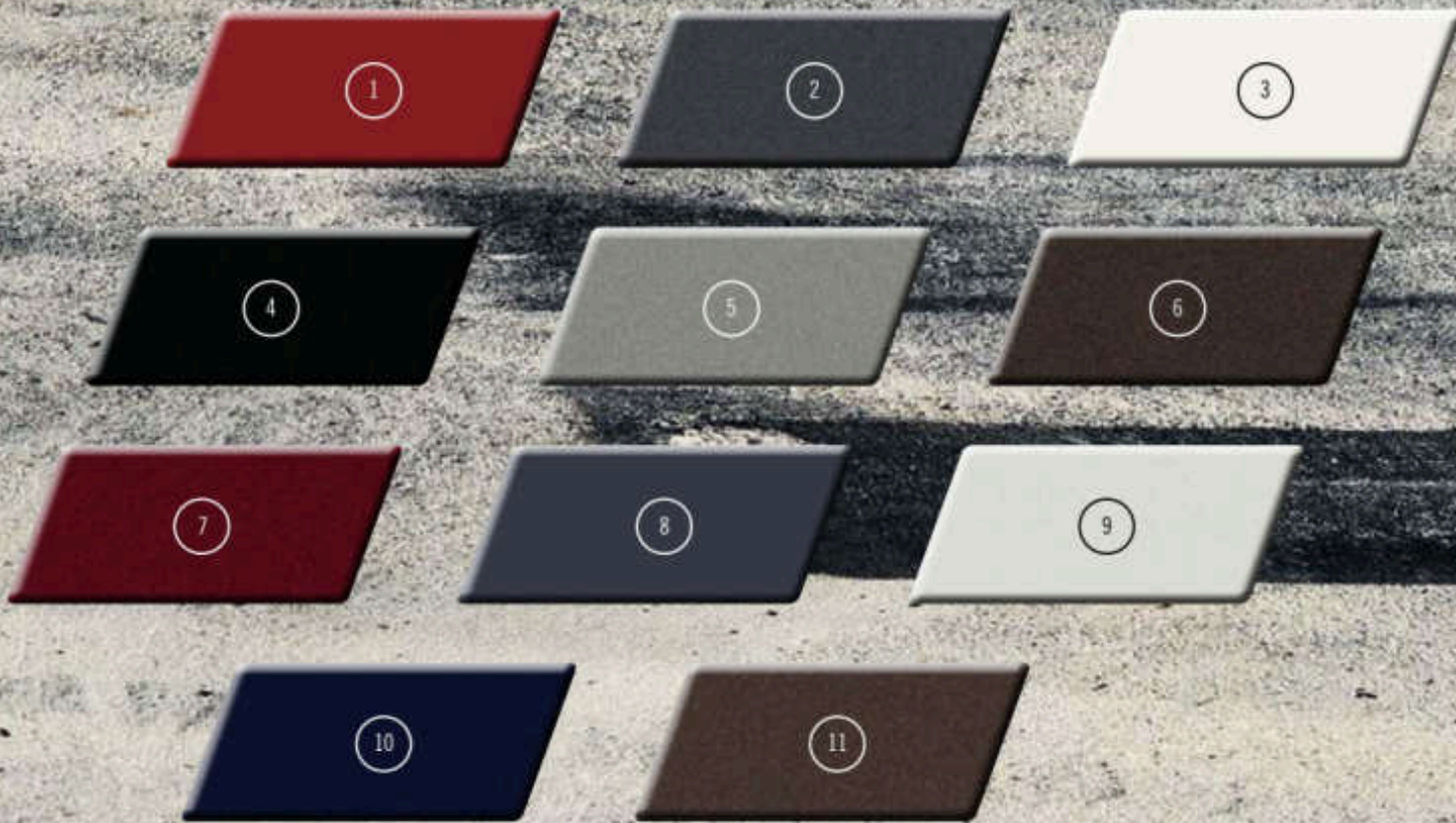
Black



INTERIOR / CHOICES

- 1 // Gradual mesh/Carolina cloth in Black (also available in Light Frost Beige) — standard on SXT
- 2 // Capri leather trim in Black — standard on GT
- 3 // Capri leather trim in Light Frost Beige — standard on GT
- 4 // Nappa Axis II perforated leather trim in Radar Red with Black accent stitching with embroidered R/T logo (also available in Black with Red accent stitching) — standard on R/T
- 5 // Nappa Axis II perforated leather trim in Tan with Black accent stitching with embroidered Citadel logo (also available in Light Frost Beige without Black accent stitching) — standard on Citadel
- 6 // Nappa Axis II perforated leather trim in Black with Light Slate Gray accent stitching with embroidered Citadel logo — standard on Citadel
- 7 // Nappa Axis II perforated leather trim in Black/Sepia with Silver accent stitching and embroidered Dodge Rhombus (also available in Black with Silver accent stitching) — available on Citadel with Anodized Platinum Appearance Package*

*Late availability.



COLOR CHOICES

- 1 //// Redline Red
- 2 //// Granite
- 3 //// White Knuckle
- 4 //// DB Black
- 5 //// Billet
- 6 //// Bomber Brown
- 7 //// Octane Red Pearl
- 8 //// Bruiser Grey
- 9 //// Vice White
- 10 //// Blu By You
- 11 //// Stout Brown

WHEEL CHOICES

- 1 // // // // 18-inch Satin Carbon (standard on SXT)
- 2 // // // // 20-inch Hyper Black Aluminum (standard on GT)
- 3 // // // // 20-inch Low-Gloss Granite Crystal (standard on R/T)
- 4 // // // // 20-inch Gloss Black Aluminum (included with Blacktop Package on GT and R/T)
- 5 // // // // 20-inch Polished Aluminum (standard on Citadel)
- 6 // // // // 20-inch Brass Monkey (Burnished Bronze; included with Brass Monkey Appearance Group on GT and R/T)
- 7 // // // // 20-inch Satin Carbon (included with Anodized Platinum Appearance Group on Citadel)





HERE'S WHAT YOU CAN DO: REMAIN FOCUSED ON THE ROAD WITH YOUR HANDS ON THE WHEEL, WHILE YOU COMMUNICATE, NAVIGATE AND STAY ENTERTAINED.

LISTEN to music, talk shows and sports; access all genres, favorite artists, winning teams — all the time with SiriusXM® Satellite Radio⁽¹⁾ **DISCOVER** new places, find the best shopping, dancing, entertainment venues and restaurants **SPEAK UP** and be heard, send and receive calls and texts⁽²⁾ while driving safely with hands-free phone capability⁽²⁾ **NAVIGATE** to every adventure, get turn-by-turn directions so you don't get lost on the way (unless you want to) **START** your car from afar, get your engine running, unlock your door or flash your headlamps from almost anywhere using your smartphone **SEE** into the future, hear weather and traffic reports* with a five-year trial subscription to SiriusXM Travel Link⁽³⁾ and SiriusXM Traffic⁽⁴⁾ **HOST** a hotspot, upload and download, post and search — Uconnect® with available 3G WiFi⁽⁵⁾ lets you connect your devices to the Web **ASSISTED** in emergencies, reach 9-1-1 Call⁽⁶⁾ operators and Roadside Assistance Call^{(7)*} with the touch of a button.

*Additional charges may apply.



FIND OUT MORE AT DRIVEUCONNECT.COM



SAFETY & SECURITY FEATURES

PARKSENSE® REAR PARK ASSISTTM /// When the vehicle is in Reverse, this system can sense objects at low speeds. If imminent collision is detected, the system will provide a momentary, autonomous brake pulse. In certain circumstances, this system can help bring the vehicle to a stop. (Available on Durango.) For Journey and Grand Caravan, this available system detects objects within 6.5 feet of the backup pathway and provides both an audible chime and visual warning.

RAIN BRAKE SUPPORT /// When the windshield wipers have been activated, the system pulses the brake pads closer to the spinning rotors, helping to keep the rotors and pads dry for greater control and operator security. Standard on Durango.

BLIND SPOT MONITORING (BSM)TM WITH REAR CROSS-PATH DETECTIONTM /// Radar continually monitors rear vehicle blind zones and will visually and audibly alert the driver when a vehicle is sensed in the zones. When the vehicle is in Reverse, rear sensors warn through a chime if cross-traffic approaches the vehicle. Available on Durango and Grand Caravan.

ADAPTIVE CRUISE CONTROL (ACC)TM WITH STOP /// Helps maintain driver-selected distance from the vehicle ahead; under certain traffic conditions, the system can bring the vehicle to a full stop without driver intervention. Available on Durango.

FORWARD COLLISION WARNING (FCW)TM WITH ACTIVE BRAKING /// Forward-facing radar sensors detect when the vehicle may be approaching another object too rapidly and the system alerts the driver with both an audible chime and a visual warning. Available on Durango.

PARKVIEW® REAR BACK-UP CAMERATM /// This system displays an accurate visual reference of what is behind the vehicle when it's in Reverse. Available on Durango, Journey and Grand Caravan.

READY ALERT BRAKE (RAB) /// The system anticipates situations when the driver may initiate an emergency brake stop and uses the Electronic Stability Control (ESC)TM pump to precharge the brake system in order to decrease the time required for full brake application. Standard on Durango.

ELECTRONIC STABILITY CONTROL (ESC)TM /// This system is designed to assist drivers in maintaining control of their vehicle during extreme steering maneuvers. ESCTM senses when a vehicle is starting to spin (oversteer) or plow (understeer), and attempts to correct the vehicle's course by automatically controlling the throttle and applying the brakes at individual wheels. Standard on Durango, Journey and Grand Caravan.

ALL-WHEEL DRIVE (AWD) /// A system that automatically detects wheel-slip and sends additional power to the wheels with the most traction. Available on Durango and Journey.

ANTILOCK BRAKE SYSTEM (ABS) /// Standard four-wheel antilock disc brakes sense and prevent wheel lockup, offering improved steering control under extreme braking and/or slippery conditions. Standard on Durango, Journey and Grand Caravan.



Dodge

DODGE

DODGE GEAR

DODGE.COM/LIFE // Check out an extensive line of gifts and gear for the Dodge enthusiast. From authentic apparel to die-cast replica cars for the collector, as well as electronics and office supplies, all lifestyle items are as bold as your Dodge vehicle. Refer to **dodge.com/life** for our full product lineup.

DODGE.COM/LIFE



Dodge Durango GT shown with Authentic Dodge Accessories by Mopar®. Mesh Chrome Grille Insert, Chrome Tubular Side Steps, 20-Inch Chrome Wheels and Chrome Mirror Covers.



Properly secure all cargo.

MOPAR ACCESSORIES // // //

- Roof-Mount Ski & Snowboard Carrier
- Molded Cargo Tray
- Wireless Charging Pad

// // // ALWAYS AT YOUR SERVICE. The story of Mopar began nearly 80 years ago with a focus on motor parts and the introduction of a simple can of antifreeze. Through the decades, we have grown into so much more. Today, as the official service, parts and customer care provider for FCA US LLC Brand vehicles, we walk alongside you as your partner in the vehicle ownership experience. That's why we offer authentic parts and accessories designed by the same engineers that created your vehicle to make it truly *yours*. It's why our team is comprised of expert dealer technicians who know your make and model best, armed with leading-edge diagnostic technology no one else can match. And it's why we've created unique services like Mopar Owner Connect, Express Lane Service and Mopar Vehicle Protection® plans to offer convenience and peace of mind. In short, we are not only here to service cars, trucks, minivans and SUVs — we are here to service people's lives. It's this commitment that fuels who we are. And it's our promise to you that Mopar will always be at your service. See your dealer for the full line of Authentic Accessories available for your Dodge vehicle, or visit mopar.com



//// BUYER'S GUIDE — DURANGO

	SXT	GT	R/T	CITADEL
ENGINES				
3.6L Pentastar® V6 Variable Valve Timing (VVT)	•	•		•
5.7L HEMI® V8 with Multi-Displacement System and VVT			•	0
ALL-WHEEL-DRIVE (AWD) SYSTEM — Single-speed, full-time AWD includes MP310 transfer case (requires 3.6L V6 engine, AWD models only)	0	0		0
— 2-speed, active on-demand AWD (packaged with 5.7L V8 engine, AWD models only)			0	0
MECHANICAL FEATURES				
BRAKES — Antilock 4-wheel disc	•	•		
— Antilock 4-wheel disc HD			•	•
EXHAUST SYSTEM — Single rear on right side with bright tip (packaged with 3.6L V6 engine)	•			
— Dual rear with bright tips (packaged with Southwest Heat Group)	P	•	•	•
FUEL TANK — 24.5-gallon	•	•	•	•
SUSPENSIONS — Eco III	•	•	•	•
— Normal-duty (on AWD only)	•	•	•	•
— Rear load-leveling (packaged with Trailer Tow Group IV on all trims, packaged with Trailer Tow and Skid Plate Group on AWD Citadel)	P	P	•	P
— Sport — Lowered ride height for enhanced handling			•	
EXTERIOR FEATURES				
GRILLE — Body-color/accent-color		•	•	
— Bright/accent-color	•			
— Bright premium				•
— Gloss Black (packaged with Blacktop Package and Brass Monkey Appearance Group)		P	P	
— Platinum (packaged with Anodized Platinum Appearance Package)				P
LIFTGATE — Power, with key fob, overhead console and rear cargo area controls (packaged with Nav and Power Liftgate Group)		P	•	•
MIRRORS — Chrome, power folding multifunction with memory, heating element, auto-dimming for driver's-side, supplemental turn signals				•
— Body-color, power, manual foldaway with heating element	•			
— Body-color, power folding multifunction with heating element, auto-dimming driver's side, supplemental turn signals and memory		•	•	
— Gloss Black, power folding multifunction with heating element, auto-dimming driver's side, supplemental turn signals and memory		P	P	
— Platinum, power folding multifunction with memory, heating element, auto-dimming driver's-side, supplemental turn signals (packaged with Anodized Platinum Appearance Package)				P
REMOTE START SYSTEM — Control integrated into key fob, radio frequency system with 300-ft range		•	•	•
ROOF RAILS — Bright side, with integrated, storable crossrails (packaged with 2TB)	P			•
— Black side (packaged with Premium Group on GT, packaged with Anodized Platinum Appearance Package on Citadel)		P	0	P
SUNROOF — Power with express-open/close and comfort-stop features (packaged with Premium Group for Fleet only on GT)	0	F/P	0	•

EXTERIOR FEATURES (continued)

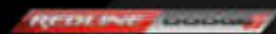
	SXT	GT	R/T	CITADEL
TIRES — P265/60R18 BSW A/S LRR	•			
— P265/60R18 BSW A/S LRR	0			
— P265/50R20 BSW A/S LRR (optional with Premium Group AWD GT, packaged with Blacktop Package or Brass Monkey Appearance Group on AWD GT, packaged with 5.7L engine on Citadel RWD, packaged with WRF wheel on SXT RWD, optional with WRH wheel on GT)	P (RWD)	0/P	•	0/P (RWD) • (AWD)
— P265/50R20 Performance A/S (packaged with Southwest Heat Group on SXT RWD)	P (RWD)	•	0	• (RWD)
INTERIOR FEATURES				
7-INCH THIN FILM TRANSISTOR (TFT) RECONFIGURABLE DIGITAL GAUGE CLUSTER — Includes custom programmable features	•	•	•	•
AIR CONDITIONING — Rear with headliner vents and rear-seat controls	•	•	•	•
— 3-Zone Automatic Temperature Control (ATC), includes infrared sensors and rear-seat outlets	•	•	•	•
CONSOLE — Full-length front floor with 2 illuminated cup holders, 2-tier armrest storage with interior 12-volt power outlet; rear features A/C vent controls	•	•	•	•
— 2 nd -row mini floor with cup holders and storage; also includes a floor mat for 3 rd -row (packaged with 2 nd -row Fold-and-Tumble Captain's Chairs)	P	P	P	P
— Overhead front with 2 LED map lamps, 2 dome lamps, sunglasses storage bin, Universal Garage Door Opener control switches (if equipped) and power sunroof/sunshade controls (if equipped)	•	•	•	•
— 2 nd -row floor with armrest, covered storage, illuminated cup holders, 12-volt auxiliary outlet and USB charging port; also includes floor mat for 3 rd -row (must have 2 nd -row Fold-and-Tumble Captain's Chairs)		0	0	0
— Leather-wrapped armrest, center			•	•
MEMORY SYSTEM — Radio station presets, last station settings, driver's-seat position, exterior mirrors, power tilt/telescoping steering wheel (if equipped) with settings for 2 drivers; actuated from driver's door panel or each unique key fob		•	•	•
SEATS — 1 st -row, manual adjust	•			
— 1 st -row, 8-way power driver's with memory (packaged with Comfort Seating Group)	P			
— 1 st -row, passenger forward fold-flat (not available with Blu-ray™ system on GT)	•	•		
— 1 st -row, power 4-way driver's lumbar adjuster (packaged with Comfort Seating Group on SXT, packaged with driver power memory fold-flat passenger seat on GT)	P	P		
— 1 st -row, power 8-way driver with memory, 6-way power passenger seat		•		
— 1 st -row, power driver/passenger 4-way lumbar adjuster		•	•	•
— 1 st -row, power 8-way driver and passenger; driver seat includes memory feature (packaged with Blu-ray/DVD Rear Entertainment System)		P	•	•
— 1 st -row, heated (packaged with Popular Equipment Group; also includes heated steering wheel)	P	•	•	•
— 1 st -row, ventilated			•	•
— 2 nd -row, 60/40 Fold-and-Tumble 3-passenger bench, folding (packaged with 3 rd -row seating)	P	•	•	•
— 2 nd -row, heated		•	•	•
— 2 nd -row, 60/40 split-folding seats	•			
— 2 nd -row, Fold-and-Tumble Captain's Chairs, includes 2 nd -row seat-mounted inboard armrests	0	0	0	0
— 3 rd -row, 50/50 split-folding	0	•	•	•

• = Included. 0 = Optional. P = Available within Package noted. F = Fleet only.

	SXT	GT	R/T	CITADEL
UCONNECT*/MULTIMEDIA				
CD PLAYER — Single-disc, remote (optional on CPDS 2TB; must have Uconnect 8.4)	O	O	O	O
SIRIUSXM® SATELLITE RADIO ⁽¹⁾ — Includes 1-year trial subscription (packaged with CPDS 2TB or Uconnect 8.4 on SXT)	P	•	•	•
SIRIUSXM TRAFFIC ⁽²⁾ — Includes 5-year trial subscription (packaged with 8.4 NAV radio; must have SiriusXM Satellite Radio ⁽³⁾)		P	•	•
SIRIUSXM TRAVEL LINK ⁽¹⁾ — Includes 5-year trial subscription (packaged with 8.4 NAV radio; must have SiriusXM Satellite Radio ⁽³⁾)		P	•	•
SPEAKERS — Alpine® Premium Audio System with 9 speakers, subwoofer and 506-watt amplifier — BeatsAudio™ Premium Sound System (packaged with Premium Group on GT, packaged with Premium Entertainment Group on Citadel)		P	•	P
— 6	•	•		
RADIOS — Uconnect 5.0	•			
— Uconnect 8.4 (packaged with Popular Equipment Group)	P	•		
— Uconnect 8.4 NAV (packaged with Nav and Power Liftgate Group)		O/P	•	•
POWER OUTLET — 12-volt in console (packaged with 2 nd -row console with armrest and storage)		P	P	P
— 2 12-volt, located on the instrument panel and in the rear cargo compartment	•	•	•	•
— 115V auxiliary		•	•	•
USB PORT — Charging, located in console (packaged with 2 nd -row console with armrest)		P	P	P
— Dual remote — charge only		•	•	•
SAFETY & SECURITY				
ACTIVE HEAD RESTRAINTS ⁽¹⁾	•	•	•	•
ADAPTIVE CRUISE CONTROL (ACC) WITH STOP ⁽¹⁾ — Packaged with Technology Group			P	P
ADVANCED BRAKE ASSIST — Packaged with Technology Group			P	P
AIR BAGS ⁽²⁾ — Advanced multistage, driver and front-passenger	•	•	•	•
— Supplemental side-curtain (all rows)	•	•	•	•
— Supplemental side	•	•	•	•
— Driver inflatable knee-bolster	•	•	•	•
— Supplemental front-seat side	•	•	•	•
BLIND SPOT MONITORING (BSM) ⁽¹⁾ AND REAR CROSS-PATH DETECTION ⁽¹⁾ — Packaged with Safety/Security and Convenience Group on GT; packaged with Technology Group on R/T and Citadel		P	P	P
ELECTRONIC STABILITY CONTROL (ESC) ⁽²⁾ — Includes vehicle stability management system, Electronic Roll Mitigation (ERM), All-Speed Traction Control, Brake Assist and 4-channel Antilock Brake System (ABS)	•	•	•	•
FORWARD COLLISION WARNING (FCW) WITH ACTIVE BRAKING ⁽¹⁾ — Packaged with Technology Group			P	P
HILL START ASSIST — Prevents vehicle from rolling back for 2 seconds when starting vehicle on an incline	•	•	•	•
KEYLESS ENTER 'N GO™ — Push-button ignition system with proximity entry	•	•	•	•
LANESENSE® LANE DEPARTURE WARNING (LDW) SYSTEM ⁽¹⁾ — Packaged with Technology Group			P	P
PARKSENSE® REAR PARK ASSIST SYSTEM ⁽¹⁾ — Packaged with Popular Equipment Group	P	•	•	•
PARKVIEW® REAR BACK-UP CAMERA ⁽¹⁾ — Packaged with Popular Equipment Group	P	•	•	•
RAIN BRAKE SUPPORT	•	•	•	•
SAFETY & SECURITY (continued)				
READY ALERT BRAKING	•	•	•	•
ROADSIDE ASSISTANCE CALL ⁽¹⁾ AND 9-1-1 CALL ⁽¹⁾ (packaged with 8.4 or 8.4 NAV radios, with 6-month trial subscription to Uconnect Access ⁽¹⁾ ; registration required)	P	•	•	•

	SXT	GT	R/T	CITADEL
SECURITY ALARM				
SENTRY KEY® ANTI-THEFT ENGINE IMMOBILIZER	•	•	•	•
TRAILER SWAY CONTROL (TSC) ⁽¹⁾	•	•	•	•
UNIVERSAL GARAGE DOOR OPENER		•	•	•
PACKAGES/EQUIPMENT GROUPS				
ANODIZED PLATINUM APPEARANCE PACKAGE — Includes 2 nd -row Fold-and-Tumble Captain's Chairs,* leather-trimmed seats, cargo cover, Black roof rails, Platinum door handles, Platinum mirror caps, Platinum interior accents*/steering-wheel bezels,* Platinum fog lamp bezels, Platinum rear lower fascia, Platinum accents on sill, Platinum front fascia, Platinum grille surround/texture and 20-inch Satin Carbon wheels (packaged with CPDS 2TP; available in Black or Black/Sepia leather interior*, exterior color choices: Vice White, White Knuckle, Octane Red, Bomber Brown, Blu By You, DB Crystal Pearl or Granite)				P
BLACKTOP PACKAGE — Includes Gloss Black badging, Gloss Black grille. Available leather interior choices: Black on GT and R/T. Available in Red on R/T. Exterior color choices: Billet, Redline 2K, Granite, Rhina, DB Crystal Pearl or Vice White (body-color grille if DB Crystal Pearl is ordered; must have 3.6L V6 on GT)		O	O	
BLU-RAY™/DVD REAR ENTERTAINMENT SYSTEM — Power 8-way driver memory and 8-way passenger seats, 2 screens mounted on the seatbacks, capable of playing both DVDs and Blu-ray discs; includes separate ports for plugging in video games or other devices (packaged with Premium Entertainment Group)		O	O	P
BRASS MONKEY APPEARANCE GROUP — Includes Gloss Black badging, Gloss Black grille with Dark Grey accents, P265/50R20 BSW All-Season LRR tires (AWD), P265/50R20 Performance tires (RWD) and 20-inch Brass Monkey wheels		O	O	
COMFORT SEATING GROUP — Includes power 4-way lumbar adjuster and 8-way power driver's seat, manual passenger seat (packaged with Customer Preferred Package 2TB)	P			
POPULAR EQUIPMENT GROUP — Includes rearview auto-dimming mirror, heated front seats, Bluetooth® Streaming Audio, Uconnect 8.4, ParkView Rear Back-Up Camera ⁽¹⁾ and ParkSense Rear Park Assist ⁽¹⁾ (optional on CPDS 2TB)	O			
PREMIUM GROUP — Includes Nav and Power Liftgate Group, Black roof rails, power sunroof, BeatsAudio Premium Sound System (must have 3.6L V6 engine)		O		
SAFETY/SECURITY AND CONVENIENCE GROUP — Includes cargo compartment cover, cargo net, rain-sensing windshield wipers, Auto High-Beam Headlamp Control, low-beam High Intensity Discharge (HID) headlamps and automatic headlamp-leveling, power tilt/telescoping steering column, with Blind Spot Monitoring (BSM) ⁽¹⁾ and Rear Cross-Path Detection ⁽¹⁾ systems		O		
TECHNOLOGY GROUP — Includes Adaptive Cruise Control (ACC) with Stop ⁽¹⁾ , Forward Collision Warning (FCW) with Active Braking ⁽¹⁾ , Advanced Brake Assist, LaneSense Lane Departure Warning with Lane Keep Assist (LDW+), ⁽¹⁾ BSM ⁽¹⁾ and Rear Cross-Path Detection ⁽¹⁾ systems			O	O
TRAILER TOW GROUP IV — Includes 220-amp alternator if 5.7L V8, heavy-duty engine oil cooler if 5.7L V8, Class IV hitch receiver, 4- and 7-pin wiring harness, rear load-leveling shocks and full-size spare tire	O	O	O	O

• = Included. O = Optional. P = Available within Package noted. *Late availability.



5 YEAR/60,000 MILE™
POWERTRAIN LIMITED WARRANTY



[1] Based on 2016 Ward's Mid-size Sport Utility Vehicle. Excludes other FCA US LLC vehicles. [2] Requires a mobile phone equipped with the Bluetooth Hands-Free Profile. Visit UconnectPhone.com for system and device compatibility. [3] SiriusXM subscriptions for audio and data services are sold by SiriusXM to follow your trial subscription. If you decide to continue listening after your trial, the subscription plan you choose will automatically renew thereafter and you will be charged according to your chosen payment method at then-current rates. Fees and taxes apply. To cancel, you must call SiriusXM at 1-866-635-2349. See the SiriusXM Customer Agreement for complete terms and more information at www.siriusxm.com. All fees and programming subject to change. Your equipment and features for SiriusXM services will vary depending upon the vehicle you select and may be limited in select markets. [4] For children 48 – 85 lb and up to 4'9" (3) No system, no matter how sophisticated, can repeat the laws of physics or overcome careless driving actions. Performance is limited by available traction, which snow, ice and other conditions can affect. When the ESC warning lamp flashes, the driver needs to use less throttle and adapt speed and driving behavior to prevailing road conditions. Always drive carefully, consistent with conditions. Always wear your seat belt. [5] The Advanced Front Air Bags in this vehicle are certified to the new U.S. Federal regulations for advanced air bags. Children 12 years old and younger should always ride buckled up in a rear seat. Infants in rear-facing child restraints should never ride in the front seat of a vehicle with a passenger front air bag. All occupants should always wear their lap and shoulder belts properly. [7] Always check manually for vehicles prior to changing lanes. [8] Voice Text Reply and Voice Texting features require a compatible mobile device enabled with Bluetooth Message Access Profile (MWP). iPhone and some other smartphones do not currently support Bluetooth MWP. Visit UconnectPhone.com for system and device compatibility. Ensure MWP is ON and incoming message notification is enabled. Vehicle must be registered for Uconnect Access and you must fulfill minimum subscription requirements. Also requires the use of a compatible smartphone that supports text messaging and Bluetooth. Visit UconnectPhone.com for system and device compatibility. [9] WiFi subscription required. Vehicle must be registered with Uconnect Access and fulfill minimum subscription requirements. Vehicle must be properly equipped and in active and usable cellular range for WiFi usage. WiFi Hotspot does not enable direct communication between multiple in-vehicle devices. Factors affecting the performance of WiFi Hotspot include: cellular network, signal strength and quality, time of day, number of channels used by the service provider, type of connection, number of clients using WiFi Hotspot and client device. This feature is not intended for use by the driver while the vehicle is in motion. Always drive safely. [10] The 9-1-1 Call button will connect you directly with Emergency Assistance. If you accidentally press the button, you have 10 seconds to cancel the call by either pressing the 9-1-1 button on the rearview mirror or the Cancel button on the Uconnect touchscreen. [11] Provides direct-dial access to Roadside Assistance Service. Vehicle must be within the United States, have network coverage and be registered with Uconnect Access with an active subscription that includes the applicable feature. Additional roadside assistance charges may apply. Check warranty for details. [12] Always look before proceeding, electronic drive aid is not a substitute for conscientious driving, always be aware of your surroundings. [13] ACC is a driver convenience system, not a substitute for active driver involvement. The driver must remain aware of traffic conditions and be prepared to use the brakes to avoid collisions. [14] FCM system is solely an alert system for the front of the vehicle which does not take any actions to change the vehicle dynamics to avoid a collision and is not a substitute for active driver involvement. The driver must remain aware of traffic conditions and be prepared to use the brakes to avoid collisions. [15] Always sit properly with the head restraint properly adjusted. Never place anything in front of the head restraints. [16] Uconnect Access is available only on equipped vehicles purchased within the 50 United States. Services can only be used where cellular coverage is available, see coverage map for details. For a complete list of Uconnect Access services, please visit http://www.dodgeconnect.com/features/uconnect_access/packages/. Vehicle must be registered for Uconnect Access and fulfill minimum subscription requirements. [17] LDW is a driver convenience system, not a substitute for active driver involvement. The driver must remain aware of traffic conditions and be prepared to use brakes to avoid collisions. [18] Transferable. See dealer for complete details and a copy of the 5-Year/60,000-Mile Powertrain Limited Warranty.

©2016 FCA US LLC. All Rights Reserved. Dodge, Charger, Challenger, Durango, Grand Cherokee, Journey, Viper, Blacktop, Citadel, the crosshair grille, Crossroad, R/T, Rallye, SRT, HEM, Mopar, the Mopar Owner Connect design, Mopar Vehicle Protection, LaneSense, ParkSense, ParkView, Pentastar, Sentry Key, Slow 'n Go, Slow 'n Place, Tigershark and Uconnect are registered trademarks, and Flip 'n Stow and Keyless Enter 'n Go are trademarks of FCA US LLC.

Mullin is a registered trademark of C.R.E. Società Comarile per Azioni, used under license by FCA US LLC. Alpine is a registered trademark of Alpine Electronics, Inc. BeatsAudio and Dr. Dre are trademarks of Beats Electronics, LLC. Bluetooth is a registered trademark of Bluetooth SIG, Inc. Blu-ray is a trademark of Blu-ray Disc Association. Garmin and the Garmin logo are registered trademarks of Garmin, Ltd. or its subsidiaries and are registered in one or more countries, including the U.S. Goodyear is a registered trademark of The Goodyear Tire & Rubber Company. Graceland MusicCo is a registered trademark of Graceland, Inc. iPod and iPhone are registered trademarks of Apple Inc. Instagram and logo are registered trademarks of Instagram, Inc. Kumho is a registered trademark of Kumho Tire Co., Inc. Pennead and logo are registered trademarks of Pennead, Inc. Sirius, XM and all related marks and logos are trademarks of SiriusXM Radio Inc. and its subsidiaries. Facebook and logo are registered trademarks of Facebook, Inc. Michelin is a registered trademark of Michelin North America, Inc. The Twitter logo is a service mark of Twitter, Inc. The YouTube logo and Google+ logo are registered trademarks of Google, Inc.

About this catalog: Since the time of printing, some of the information you'll find in this catalog may have been updated. Ask your dealer for details. Some of the equipment shown or described throughout this catalog may be available at extra cost. Specifications, descriptions, illustrative materials and all competitive comparisons contained herein are as accurate as known at the time this publication was approved for printing. FCA US LLC reserves the right to discontinue models at any time or change specifications without notice or without incurring obligation. Some options may be required in combination with other options. For the price of the model with the equipment you desire, in verification of specifications contained here, see your Dodge dealer.

DODGE IS A REGISTERED TRADEMARK OF FCA US LLC.

DODGE 

DODGE.COM // // // // 800-4ADODGE