

09

DODGE GRAND CARAVAN



**IT'S NO SURPRISE THAT DODGE GRAND CARAVAN IS AMERICA'S BEST-SELLING MINIVAN.<sup>[1]</sup> AFTER ALL, IT'S BEEN ENGINEERED WITH 25 YEARS OF FAMILY-FRIENDLY INNOVATIONS LIKE SWIVEL 'N GO® AND STOW 'N GO®. PLUS, NO OTHER MINIVAN OFFERS BETTER FUEL ECONOMY.<sup>[2]</sup>**

<sup>[1]</sup> Based on total sales in 2007 calendar year. <sup>[2]</sup> Based on Ward's Small Van segment. EPA estimated 17 city/25 highway.



The 2009 Dodge Grand Caravan still stands as the minivan that created the segment 25 years ago. It still separates itself from all others with features never before seen in a minivan. From inventive interior technologies and legendary safety features to finely tuned efficiencies, there simply never has been anything like Dodge Grand Caravan. The tradition continues at [www.dodge.com/grandcaravan](http://www.dodge.com/grandcaravan)

Dodge Grand Caravan SXT shown in Light Sandstone Metallic.



**25 YEARS OF  
LEADERSHIP.**

**ONLY YOUR LIVING ROOM LEAVES YOU WITH MORE OPTIONS FOR FAMILY GATHERINGS. SWIVEL 'N GO.<sup>®</sup>** The available class-exclusive Swivel 'n Go Seating System<sup>[1][2]</sup> provides second-row captain's chairs that rotate 180° to face the third row and includes a removable, easily stored center table.<sup>[3]</sup> Backseat windows not only retract within the sliding doors, they also feature available retractable sunshades for both the second and third rows.

**uconnect studios FEATURING SIRIUS BACKSEAT TV.<sup>™</sup>** As part of uconnect studios, the available SIRIUS Backseat TV broadcasts three channels of streaming video on dual, larger 9-inch LCD screens in the overhead system. The DVD players feature input jacks to accommodate your ever-changing gaming and video input needs. The third-row screen now swivels<sup>[4]</sup> to keep up with Grand Caravan's multitude of seating configurations. This is a backseat that takes a backseat to nobody. <sup>[1]</sup>Seat must be locked in forward or rearward mode while vehicle is in motion. Child restraints must

only be used when seats are in forward-facing mode. Children 12 and under should always be seated in the rear seats, properly restrained in a child seat or vehicle seat belt. <sup>[2]</sup>Based on model year 2008 Ward's Small Van segment.

<sup>[3]</sup>Tabletop must be installed to base at all times when in use. When not in use, table and base must be properly stowed. Never drive with table installed without properly using your seat belt. Properly secure all cargo. <sup>[4]</sup>Late availability, with Swivel 'n Go seating only.



# THE INDUSTRY'S ONLY FOLD-IN-FLOOR SECOND-ROW SEATING SYSTEM.



Dodge Grand Caravan SXT in Stone White with Stow 'n Go® seating and available leather-trimmed interior in Light Shale. Properly secure all cargo.

**CLASS-EXCLUSIVE<sup>11</sup> STOW 'N GO®.** By folding the second-row and 60/40 split third-row seats into in-floor storage wells, you can go from seven-passenger seating to two, up to 143 cubic feet of cargo room, and a completely flat load floor all in about 30 seconds.

**CLASS-EXCLUSIVE<sup>11</sup> REMOTE START.** Grand Caravan is designed for convenience before you even step inside, thanks to the class-exclusive available remote start feature that works from up to 300 feet away.

**IN-FLOOR STORAGE BINS.** Grand Caravan's in-floor storage bins are brilliant even when they aren't accommodating the seats of the Stow 'n Go system. These perfect, altogether out of the way, storage cubbies employ Quiet Steel,<sup>®</sup> a laminated steel product that absorbs road noise and greatly reduces its presence in Grand Caravan's cabin.

**AVAILABLE 8-WAY POWER DRIVER AND FRONT-PASSENGER SEATS.** While rear-seat passengers appreciate a multitude of configurations, Grand Caravan's pilot and copilot benefit from seats that are easily adjusted for the most finely tuned comfort.

**HEATED CLOTH OR LEATHER FIRST- AND SECOND-ROW SEATS.** The theme of tailored comfort continues in Grand Caravan with available heated seats — in leather or cloth trim.

**AVAILABLE PREMIUM FLOOR CONSOLE.** While the standard floor console allows for easy pass-through access between the first- and second-row passengers, the available Premium Floor Console is a three-piece compartment that features a power outlet, four cup holders, and removable dishwasher-safe liners.

**CUP HOLDERS.** Grand Caravan features up to nine cup holders (plus two extras when you opt for the second-row bench seat) and four bottle holders. The design of every built-in pocket was designed to facilitate easy cleaning.

**MESH POCKETS.** Choose Stow 'n Go or Swivel 'n Go<sup>®12</sup> seating for added storage and versatility. Grand Caravan models optioned with either of these systems also feature mesh seat pockets. Visit [dodge.com/grandcaravan](http://dodge.com/grandcaravan) for more details on this minivan's capabilities. <sup>11</sup>Based on 2008 *Automotive News* classification. <sup>12</sup>Seats must be locked in forward or rearward mode while vehicle is in motion. Child restraints must only be used when seats are in forward-facing mode. Children 12 and under should always be seated in the rear seats, properly restrained in a child seat or vehicle seat belt.

**STOW 'N GO**



STOW 'N GO®

1



POWER-FOLDING BENCH

2



FLAT LOAD FLOOR

3

**WELCOME TO 256 SEATING AND STORAGE CONFIGURATIONS.** Born to adapt unlike any other, Grand Caravan engineers married each technological breakthrough with an ease of usage that practically belies the genius of their inventions.

**1 STOW 'N GO®.** The choreography that allows a captain's chair to fold upon itself and disappear into Grand Caravan's floor is even more impressive when you realize how simple it is to execute the maneuver.

**2 ONE-TOUCH POWER-FOLDING THIRD-ROW BENCH SEAT.** It doesn't get much easier than flipping a third-row seat from forward facing to tailgate seating, or simply fold it into the floor with the single push of a button. Grand Caravan's optional one-touch power-folding system makes any transition an easy undertaking. Flip it fully around to the tailgate seating position,<sup>11</sup> and you've got the best seat in the house for both soccer games and family picnics.

**3 FLAT LOAD FLOOR.** With Stow 'n Go, the conversion from people hauler to cargo container is equally simple. Grand Caravan is designed to carry 4x8-foot sheets of building material, making it a benchmark even when the benches are out of sight. Get the whole inside story at [dodge.com/grandcaravan](http://dodge.com/grandcaravan)

<sup>11</sup>Do not drive with seat in tailgate position. Properly secure all cargo.



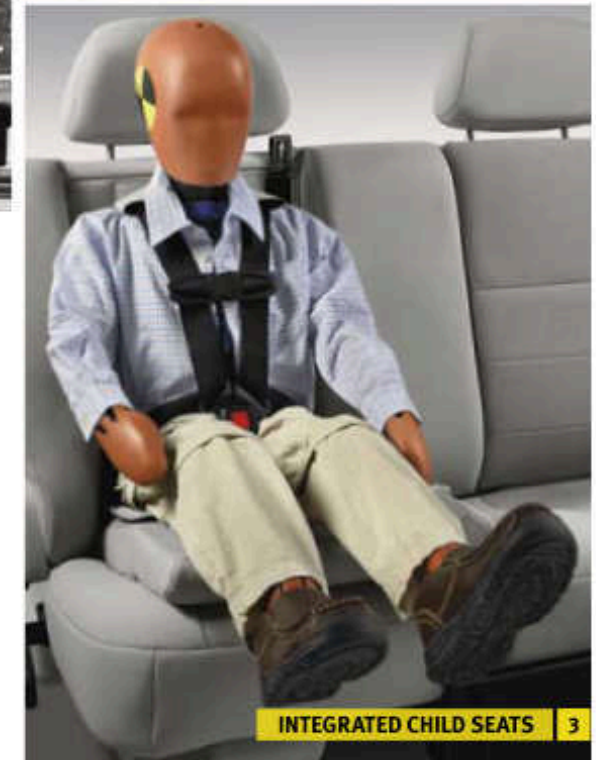
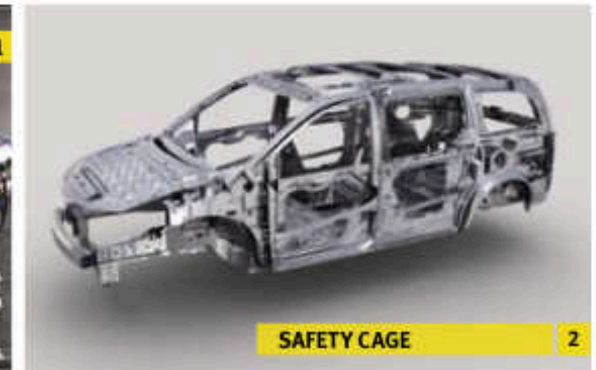
**TO BE THE BEST, BE PREPARED TO TEST.** Only Grand Caravan can claim the benefits of over 25 years of testing and development. Why? Because no other company has been designing and building minivans long enough to celebrate their Silver Anniversary. To build the best, Chrysler engineers test Grand Caravan in a multitude of grueling, thoroughly controlled conditions.

**1 ANECHOIC CHAMBER.** To truly test noise, vibrations, and harshness (NVH), you need the perfect setting to obtain precise sound measurements. The anechoic chamber features a rolling floor to simulate highway speeds and gauge the benefits of sound-deadening innovations in Grand Caravan like the use of Quiet Steel<sup>®</sup>, the core between two layers of steel that eliminates vibration and noise.

**2 AERO-ACOUSTIC WIND TUNNEL.** The influence of wind noise on the cabin and the efficiency of aerodynamic design are simultaneously tested in Chrysler's wind tunnel. A massive, electric-powered fan circulates air through the testing platform at 100 mph.

**3 FOUR-POST SHAKER.** To gauge the effectiveness of suspension design in terms of both ride and noise, Grand Caravan is rattled mercilessly on a four-post shaker from the earliest phase of development onward.

**4 ENVIRONMENTAL TESTS.** The Environmental Test Center subjects Grand Caravan to extremes, ranging from a brutal -40° Fahrenheit up to a blistering 130° Fahrenheit. There's more to the quality story. Check it out at [dodge.com/grandcaravan](http://dodge.com/grandcaravan)



**IT KNOWS HOW TO TAKE A PUNCH.** Grand Caravan benefits from a tradition of being laboriously tested time and again to ensure that its safety and security systems are executed with perfect choreography.

★ ★ ★ ★ ★  
**FIVE-STAR**

HIGHEST GOVERNMENT  
FRONT CRASH TEST RATING<sup>[1]</sup>

**1 ENHANCED CRUSH ZONE.** Designed with straighter front rails and an enhanced crush zone between the front bumper and the windshield. The engineering allows more energy to be absorbed and deflect intrusion from the passenger compartment.

**2 SAFETY CAGE.** High-strength steel is employed to form a protective shell — safety cage — around the cabin's occupants.

**3 AVAILABLE INTEGRATED CHILD SEATS.<sup>[2]</sup>** The available integrated child seats ensure young passengers are as contained as they are entertained. Opt for the available booster seat to perfectly fill the gap between child seat and three-point seat belt.

**4 STANDARD SIDE-CURTAIN AIR BAGS.<sup>[3]</sup>** When avoidance is not an option, standard side-curtain air bags deploy with extended uptime, blanketing outboard positions in all three rows of seating. **STANDARD ANTILOCK BRAKE SYSTEM (ABS).** This advanced system helps control the vehicle and shortens the braking distance. The standard Electronic Stability Program (ESP)<sup>[4]</sup> helps the driver maintain directional stability during braking, cornering, accelerating, and maneuvering.

**BLIND SPOT DETECTION SYSTEM (BSD).<sup>[5]</sup>** While traveling in forward gears, this system activates an audible warning to drivers that another vehicle is beside them. BSD includes the Rear Cross Path System (RCP)<sup>[6]</sup> that warns drivers of traffic moving toward their vehicle with an illuminated icon in the sideview mirrors and an audible chime. It also activates any time the vehicle is in reverse. An exclusive to Chrysler vehicles.

**STANDARD TIRE PRESSURE MONITORING SYSTEM.** Activates a warning lamp in the instrument cluster if a pressure is recorded out-of-range.

**AVAILABLE RAIN-SENSING WIPERS.** Improve visibility by adjusting automatically for your vehicle speed and the amount of precipitation encountered. See how this minivan's safety and security features set it apart at [dodge.com/grandcaravan](http://dodge.com/grandcaravan)

<sup>[1]</sup>Star ratings are part of the National Highway Traffic Safety Administration's (NHTSA) New Car assessment program ([www.safercar.gov](http://www.safercar.gov)). <sup>[2]</sup>For children at least one year old, weighing between 22 and 50 lb, and no more than 47" tall. Booster seat is only for children under 57" tall, between 48 and 85 lb. Always buckle seat belt properly. <sup>[3]</sup>Always sit properly in the seat with the seat belt fastened. Children 12 and under should always be in a backseat correctly using an infant or child restraint system, or the seat belt positioned correctly for the child's age and weight. <sup>[4]</sup>No system, no matter how sophisticated, can repeal the laws of physics or overcome careless driving actions. Performance is limited by available traction, which snow, ice and other conditions can affect. When the ESP warning lamp in the speedometer flashes, the driver needs to use less throttle and adapt speed and driving behavior to prevailing road conditions. Always drive carefully, consistent with conditions. Always wear your seat belt. <sup>[5]</sup>Always check visually for vehicles prior to changing lanes. <sup>[6]</sup>Always check entire surroundings visually before backing up.



**THE WORLD AT YOUR FINGERTIPS.** Ingenuity abounds with every aspect of this minivan's interior. Designed to allow you to take on any undertaking with ease, every feature is thoroughly thought out.

**uconnect** The 6.5-inch touch-screen **uconnect tunes** provides entertainment, information, and communication, all through an AM/FM/CD/DVD<sup>11</sup> stereo system. A 30GB hard drive allows you to store photos and playlists, as well as rip, stash, organize, and shuffle up to 6,700 digital music files from CDs, integrated USB port or exterior input jack. The touch-screen allows you to easily change radio stations and play digital audio files. Stepping up to **uconnect gps**, which includes all the same great features, and adds the convenience of turn-by-turn navigation with SIRIUS traffic real-time updates using uconnect studios' **SIRIUS® Satellite Radio**. The included **uconnect phone** provides hands-free, voice-activation capability (in three languages: English, French, and Spanish) with your Bluetooth® compatible phone.

📞 **uconnect phone** Go high-tech with uconnect phone, an in-vehicle voice-activated communication system that allows you to talk on your Bluetooth compatible phone virtually hands-free. Comes bundled with uconnect gps or can be added as a stand-alone feature.

🌐 **uconnect web** Turn your vehicle into a WiFi Hotspot with uconnect web, an Authentic Dodge Accessory by Mopar. It allows every passenger in your vehicle to harness the power and entertainment value of the Internet at the same time. It's easy for the whole family to use with laptops or other wireless devices, and does not require software. Subscription required, sold separately.

**STEERING WHEEL-MOUNTED CONTROLS.** Standard on Grand Caravan SXT, steering wheel-mounted controls allow an easy interface with volume, radio channel selection, CDs, and DVDs.

**THREE-ZONE CLIMATE CONTROL.** The spirit of easy control continues with an available three-zone climate control system which essentially divides Grand Caravan into three distinct zones via its electronic thermostats.

**FIRST- AND SECOND-ROW HEATED SEATS.** The cabin temperature can be further tempered by choosing heated seats, available in both leather or Stain Repel seat fabric, the stain-resistant, odor-resistant, antistatic cloth upholstery.

**POWER HEATED MIRRORS.** Adjust your exterior driver and passenger sideview mirrors from inside your vehicle with push-button control.

**ELECTRONIC VEHICLE INFORMATION CENTER (EVIC).** Opt for the new EVIC system in Grand Caravan SXT and you will be the fortunate recipient of 128 distinct and programmable functions. <sup>11</sup>uconnect in-dash DVD capability is not available in all states. See your dealer for details.



**BEHOLD THE BEST-IN-CLASS<sup>[1]</sup> ENTERTAINMENT SYSTEM.**

📶 **uconnect studios** Like a menu offering the best of in-vehicle technology, uconnect studios lets you either bundle or select individual available features such as: **SIRIUS BACKSEAT TV.**<sup>TM</sup> The available SIRIUS Backseat TV allows live content from three favorite family channels — Nickelodeon,<sup>TM</sup> Disney Channel, and Cartoon Network — to stream directly to your Grand Caravan 24/7. For added value, front-seat passengers can enjoy separate programming on SIRIUS Satellite Radio while rear-seat occupants view SIRIUS Backseat TV. **SIRIUS SATELLITE RADIO.** Delivers over 130 channels, including 100% commercial-free music, sports, news, talk, entertainment, traffic, and weather. Comes bundled with uconnect gps or can be added as a stand-alone feature.

**AVAILABLE VIDEO ENTERTAINMENT SYSTEM (VES<sup>®</sup>).** Outfit Grand Caravan with either one or two 9-inch video screens. Content can be delivered from a multitude of sources, ranging from DVDs to video gaming consoles or from video cameras to streaming video programs from uconnect studios with SIRIUS Backseat TV. Parental controls allow the driver and front passenger to lock out the system's master remote control, so mom and dad have the final say on content.

**HALO LIGHTING.** The available overhead console features lighting which provides a soft glow of light that fills the cabin and offers the driver and front passenger the opportunity to keep an eye on activity in the back.

**WIRELESS HEADPHONES.** Wireless infrared two-channel adjustable headsets allow rear-seat passengers to listen to the same or separate audio sources simultaneously. Find out what else makes this minivan so entertaining at [dodge.com/grandcaravan](http://dodge.com/grandcaravan)

<sup>1</sup>Based on SIRIUS Satellite TV. "SIRIUS," the SIRIUS dog logo, "SIRIUS Backseat TV" and related marks are trademarks of SIRIUS Satellite Radio Inc. All other trademarks, service marks and logos are the property of their respective owners. All rights reserved. Subscription required. Prices and programming are subject to change. Not available in AK and HI. For full Terms and Conditions, visit SIRIUS.com. © 2008 Viacom International Inc. All rights reserved. Nick Jr., Dora the Explorer and all related titles, logos and characters are trademarks of Viacom International Inc. DISNEY CHANNEL, and The DISNEY CHANNEL LOGO are trademarks of Disney Enterprises, Inc. and are used with permission. TM and © Cartoon Network.

# NO OTHER MINIVAN OFFERS BETTER FUEL ECONOMY.<sup>[1]</sup>



THE 2009 DODGE GRAND CARAVAN  
INCLUDES THE BEST-IN-THE-BUSINESS  
LIFETIME POWERTRAIN LIMITED WARRANTY  
WITH UNLIMITED MILEAGE.

Non-Transferable. See dealer for a copy of Limited Warranty and details.



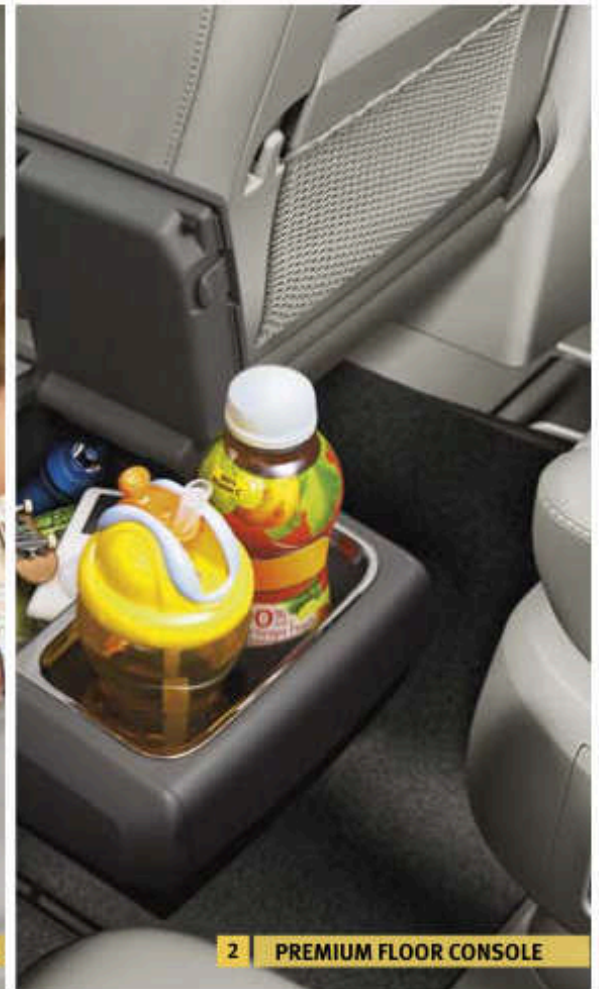
Grand Caravan offers an exclusive 4.0-liter engine with 6-speed automatic transmission. No other minivan offers better fuel economy.<sup>[1]</sup> This fuel-saving combination gives you the power to tow loads heavier than any other minivan<sup>[2]</sup> can, and gives more torque to get you moving. Grand Caravan is as earth-friendly as it is family-friendly. Grand Caravan's 3.3-liter Flex Fuel<sup>[3]</sup> engine is capable of running on E85 — a blend of 85 percent ethanol and 15 percent petroleum, regular gasoline, or a combination of both. Even when you are driving at the slowest of paces, Grand Caravan's standard Electronic Stability Program (ESP)<sup>[4]</sup> with Traction Control employs a computer system which calculates input data at speeds that are practically unfathomable to help the driver maintain vehicle control. <sup>[1]</sup>Based on Ward's Small Van segment. EPA estimated 17 city/25 highway. <sup>[2]</sup>Based on 2008 model year Ward's Small Van segment. <sup>[3]</sup>Flex Fuel V6 engine not available in CA, CT, MA, ME, NY, PA, RI and VT. Contact your authorized Dodge dealer to verify your vehicle's Flex Fuel (FFV) compatibility. 3.3L gasoline V6 will be substituted. <sup>[4]</sup>No system, no matter how sophisticated, can repeal the laws of physics or overcome careless driving actions. Performance is limited by available traction, which snow, ice and other conditions can affect. When the ESP warning lamp in the speedometer flashes, the driver needs to use less throttle and adapt speed and driving behavior to prevailing conditions. Always drive carefully, consistent with conditions. Always wear your seat belt.

**Dodge Grand Caravan SE in Bright Silver Metallic with Molded Running Boards and Side Window Air Deflectors — Authentic Dodge Accessories by Mopar.**



## BEST FAMILY VEHICLE EVER.<sup>[1]</sup>

SWIVEL 'N GO® 1



2 PREMIUM FLOOR CONSOLE

**FAMILIES LOVE GRAND CARAVAN.** With innovative features and a unique perspective on seating, it's no surprise Grand Caravan is the best family vehicle ever.<sup>[1]</sup>

**1 SWIVEL 'N GO®<sup>[2]</sup>** Opt for the Swivel 'n Go system and your second-row captain's chairs are mounted on rotating bases. One part office chair, one part RV living room, the system includes an easily stowable table.<sup>[3]</sup> Unlike its Stow 'n Go® counterparts, the system's captain's chairs do not fold completely away, but rather fold to a flat-back position and can be easily removed and stored on their wheeled bases.

**2 PREMIUM FLOOR CONSOLE.** This available interior amenity is removable and features a sliding console with a power outlet, cup holders, and storage. It's the ideal in-vehicle locker to keep a large purse out of view. Easily accessed from both the first- and second-row seats, the console can be positioned in several stops along its tracks. <sup>[4]</sup>Based on exclusive Stow 'n Go and Swivel 'n Go seating, best-in-class storage system and only vehicle with available SIRIUS Backseat TV.<sup>SM</sup> <sup>[5]</sup>Seat must be locked in forward or rearward mode while vehicle is in motion. Child restraints must only be used when seats are in forward-facing mode. Children 12 and under should always be in a backseat properly restrained in a child seat or with the seat belt positioned correctly for the child's age and size. <sup>[6]</sup>Tabletop must be installed in base at all times when in use. When not in use, table and base must be properly stowed. Never drive with table installed without properly using your seat belts. Properly secure all cargo.



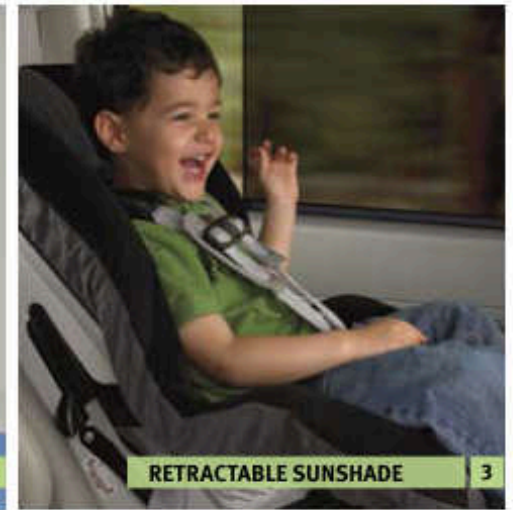
POWER RETRACTABLE REAR WINDOWS

1



CONVERSATION MIRROR

2



RETRACTABLE SUNSHADE

3



STAIN-RESISTANT CLOTH FABRIC

4



LED MAP/READING LAMPS

5



PARKVIEW REAR BACK-UP CAMERA

6

**SO THIS IS WHAT THE BEST MINIVAN EVER<sup>[1]</sup> LOOKS LIKE.** When it comes to combining convenience with ingenuity, there's nothing like Grand Caravan.

**1 POWER RETRACTABLE SECOND-ROW WINDOWS.** Grand Caravan's available power sliding doors feature available power retractable second-row windows. Engineered without the need for a division bar, the lower retraction offers an unobstructed view.

**2 OVERHEAD CONVERSATION MIRROR.** Easily retracted from the overhead front console, the conversation mirror offers both in-vehicle monitoring and peace of mind.

**3 RETRACTABLE SUNSHADES.** These available fully integrated second- and third-row sunshades diffuse bright light while still allowing occupants to see the world outside.

**4 STAIN REPEL SEAT FABRIC.<sup>[2]</sup>** Even the seating surfaces are technologically advanced. Available stain-resistant, odor-resistant, antistatic seat fabric employs a dual action technology to defend itself — and the Grand Caravan's cloth upholstery and floor mats — against spills and such.

**5 LED MAP/READING LAMPS.** The available overhead console features aimable LED map/reading lamps with swiveling bezels for perfect pointing. The same lights illuminate when any door is opened.

**6 PARKVIEW® REAR BACK-UP CAMERA.<sup>[3]</sup>** Brilliant vision continues, thanks to the available ParkView Rear Back-Up Camera. When Reverse is engaged, the rearward view is shown on the 6.5-inch radio display. Click on [dodge.com/grandcaravan](http://dodge.com/grandcaravan) for the rest of the story.

<sup>[1]</sup>Based on exclusive Stow 'n Go and Swivel 'n Go seating, best-in-class storage system and available SIRIUS Backseat TV.<sup>TM</sup> <sup>[2]</sup>Not compatible with aftermarket fabric-protecting coatings. <sup>[3]</sup>Always check entire surroundings visually before backing up.

AUTHENTIC DODGE ACCESSORIES



**AUTHENTIC DODGE ACCESSORIES.** When you enhance your Grand Caravan with Authentic Dodge Accessories by Mopar, you gain far more than substantial style, premium protection, powerful performance or extreme entertainment. You also benefit from the authentic difference found only in an original equipment accessory. It's a difference you'll recognize in our higher standards and tighter tolerances and one you'll appreciate in our stricter testing measures, from impact performance tests to harsh on- and off-road durability testing. Choose the full line of accessories that feature a fit, finish and functionality designed specifically for your Grand Caravan.

**SPORT UTILITY BARS.** Heavy-duty bars accommodate all Dodge carrier accessories as well as your active lifestyle.

**ROOF-MOUNT WATER SPORTS CARRIER.** This carrier can be outfitted to adapt to any number of activities — like, say, sea-kayaking.

**SIDE WINDOW AIR DEFLECTORS.** These tinted deflectors are designed to channel both wind and rain away from the side windows.

**HITCH RECEIVER.<sup>1</sup>** Grand Caravan's Hitch Receiver can trailer loads of up to 3,600 lb with trailer tow package and with proper weight-distributing equipment. Ball Mount, Hitch Ball and Wire Harness sold separately.

**MOLDED SPLASH GUARDS.** Uniquely contoured to protect your rear fascia against damaging road debris. Splash Guards match their form with function.

**MOLDED RUNNING BOARDS.** A high-strength substructure and skid-resistant surfaces allow these running boards to take the pounding your family dishes out. Check us out at [mopar.com](http://mopar.com)

<sup>1</sup>Check Owner's Manual for hitch type, load capacity and heavy-duty equipment required. Do not exceed rated tow capacity of the vehicle as equipped. Trailer may require some items not supplied by Mopar.



**GRAND CARAVAN SXT**  
INFERNO RED CRYSTAL PEARL

#### GRAND CARAVAN TRIM LEVELS

##### GRAND CARAVAN SXT

It is good to be king. Grand Caravan SXT is nothing short of the total package. Armed with increased horsepower and abundant interior amenities, it represents the pinnacle of Dodge minivan development.

##### GRAND CARAVAN SE

Loaded with safety systems and brilliant interior advancements as standard equipment, Grand Caravan SE leaves nothing to want.



#### THE 2009 DODGE GRAND CARAVAN INCLUDES A LIFETIME POWERTRAIN LIMITED WARRANTY.

No deductible. See dealer for a copy of limited warranty details. Non-Transferable. Not available on SRT,\* diesel vehicles, Sprinter, Ram Chassis Cab, Hybrid System components (including transmission) and certain fleet vehicles.



**GRAND CARAVAN SE**  
BRIGHT SILVER METALLIC



**GRAND CARAVAN SE**  
LIGHT SANDSTONE METALLIC



**3.3L FLEX FUEL<sup>TM</sup> ENGINE**

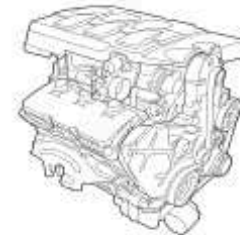
Standard on SE, this V6 is capable of running on gasoline, E85 (ethanol) or any combination of the two, all while providing 175 hp and 205 lb-ft of torque.

<sup>TM</sup>3.3L Flex Fuel V6 engine not available in CA, CT, MA, ME, NY, PA, RI and VT. 3.3L gasoline V6 engine will be substituted.



**3.8L ENGINE**

Standard on SXT, this V6 is a proven performer in the Dodge lineup. Thanks to the refined gear ratios of its 6-speed automatic transmission, the 3.8-liter delivers 197 horsepower and 230 lb-ft of torque.



**4.0L ENGINE**

The exclusive 4.0-liter engine optional on SXT puts out 251 horsepower and 259 lb-ft of torque. It is packaged with the exclusive<sup>[1]</sup> 6-speed automatic transmission. Together, they allow you to tow heavier loads than any other minivan while maintaining unbeatable fuel economy for a minivan<sup>[2]</sup> <sup>[1]</sup>Based on 2008 Ward's Small Van segment.

<sup>[2]</sup>EPA estimated 17 city/25 highway mpg.



STONE WHITE



DEEP CRIMSON PEARL

### GRAND CARAVAN WHEELS

Every Grand Caravan wheel was designed with less flat surface area in order to deter brake dust — an unavoidable by-product of Grand Caravan's larger braking system — from collecting on the wheels themselves. The brakes employ a lining material to help eliminate dust, further contributing to a cleaner-looking wheel.

- 1 16-inch Stamped Steel with Painted Bolt-On Wheel Cover (Standard on SE)
- 2 16-inch Machined-Face Cast Aluminum (Standard on SXT)
- 3 17-inch Cast Aluminum (Available on SXT)



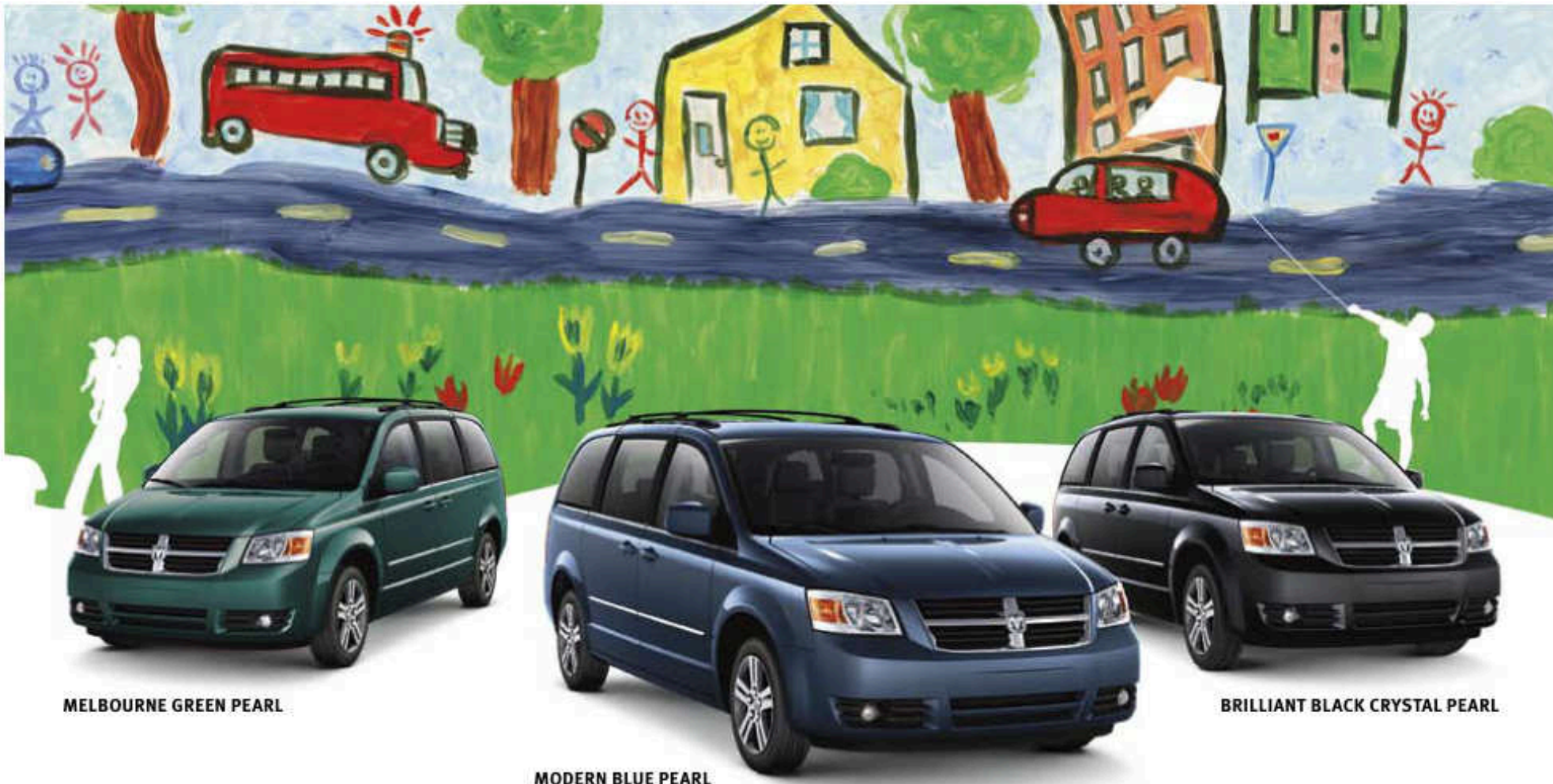
1



2



3



MELBOURNE GREEN PEARL

MODERN BLUE PEARL

BRILLIANT BLACK CRYSTAL PEARL

**GRAND CARAVAN COLORS & FABRICS**

**EXTERIOR COLOR**

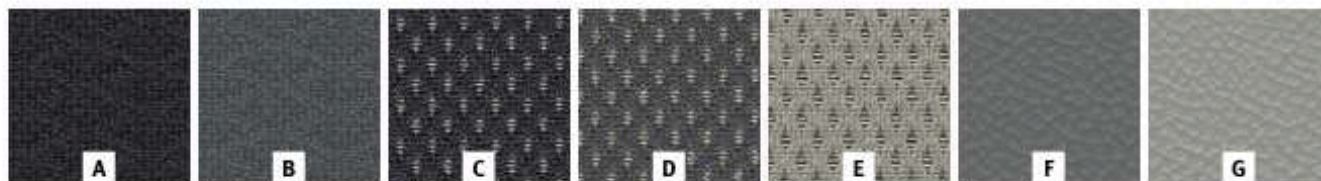
- Bright Silver Metallic
- Brilliant Black Crystal Pearl
- Deep Crimson Pearl<sup>1)</sup>
- Inferno Red Crystal Pearl
- Light Sandstone Metallic
- Melbourne Green Pearl<sup>1)</sup>
- Modern Blue Pearl
- Stone White

**SE**

- A, B (C, D)
- A, B (C, D)
- A, B (C, D)
- A (C)
- A, B (C, D)
- A, B (C, D)

**SXT**

- C, D, E (F, G)
- C, D, E (F, G)
- C, D, E (F, G)
- C, D, E (F, G)
- C, E (G)
- C, D, E (F, G)
- C, D, E (F, G)
- C, D, E (F, G)



**A** Boyd Cloth Dark Slate Gray. **B** Boyd Cloth Medium Slate Gray. **C** Camden Cloth with Stain Repel<sup>1)</sup> seat fabric Dark Slate Gray. **D** Camden Cloth with Stain Repel<sup>1)</sup> seat fabric Medium Slate Gray. **E** Camden Cloth with Stain Repel<sup>1)</sup> seat fabric Light Shale. **F** Torino Leather Trim Medium Slate Gray. **G** Torino Leather Trim Light Shale. <sup>1)</sup> Not compatible with aftermarket fabric-protecting coatings.

<sup>1)</sup>New for 2009.

Standard (Optional)

# GRAND CARAVAN BUYER'S GUIDE

## FEATURES COMMON ACROSS ALL TRIM LEVELS

<b>AIR BAGS</b> — Advanced multistage driver and front-passenger air bags with Low Risk Deployment <sup>11</sup> — Supplemental side-curtain air bags for outboard seating positions in all three rows <sup>12</sup>
<b>BRAKES</b> — 4-wheel antilock (ABS) with vented front and solid rear discs
<b>CHILD SEAT ANCHOR SYSTEM</b> — LATCH-ready, includes mounts for two compatible aftermarket child seats in the intermediate row
<b>CONSOLE</b> — Overhead, includes interior observation mirror, sunglasses bin, switchable on/off lamps and switches for power doors and liftgate if so equipped (sunglasses bin not available with sunroof)
<b>DOOR LOCKS</b> — Power with child-protection door locks for rear doors
<b>ELECTRONIC STABILITY PROGRAM (ESP)</b> — Includes Brake Assist and all-speed traction control <sup>13</sup>
<b>FLOOR CONSOLE</b> — Removable tray with four cup holders mounted to floor between first row seats
<b>FLOOR MATS</b>
<b>POWER ACCESSORY</b> — 12-volt auxiliary in instrument panel, two 12-volt DC power outlets (one in instrument panel, one in rear quarter trim)
<b>RADIO</b> — AM/FM/CD/MP3
<b>REMOTE KEYLESS/ILLUMINATED ENTRY SYSTEM WITH SENTRY KEY®</b> — Includes two transmitters and headlamp-off time delay
<b>SEATS</b> — Front low-back bucket seats — Stow 'n Go® — 3rd-row 60/40 split-folding bench seat with fold-in-floor and tailgate position features Stow 'n Go
<b>SLIDING DOOR ALERT SYSTEM</b> — Hazard lamps flash when sliding doors are in operation, signaling other drivers that passengers could be entering/exiting the vehicle
<b>STORAGE</b> — Stow 'n Go seating with in-floor second- and third-row storage bins — Cup holders, two in center stack, three in rear quarter trim panels, four in floor console — Map pockets on each front seatback
<b>SUSPENSION</b> — MacPherson strut independent front and twist beam rear
<b>TIRE PRESSURE MONITORING SYSTEM</b>

\* = Standard, P = Included in package noted in parentheses, O = Optional.

<sup>11</sup> Always sit properly in the seat with the seat belt fastened. Children 12 and under should always be in a back seat correctly using an infant or child restraint system or the seat belt positioned correctly for the child's age and weight. <sup>12</sup> No system, no matter how sophisticated, can repeal the laws of physics or overcome careless driving actions. Performance is limited by available traction, which snow, ice and other conditions can affect. When the ESP warning lamp in the speedometer flashes, the driver needs to use less throttle and adapt speed and driving behavior to prevailing road conditions. Always drive carefully, consistent with conditions. Always wear your seat belt. <sup>13</sup> Late availability, 3.3L FFV V6 engine not available in CA, MA, ME, NY, and VT. 3.3L gasoline V6 engine will be substituted. <sup>14</sup> Must use Bluetooth® compatible phone. <sup>15</sup> Not compatible with aftermarket fabric-protecting coatings. <sup>16</sup> Seat must be locked in forward or rearward mode while vehicle is in motion. Child restraints must only be used when seats are in forward-facing mode. Children 12 and under should always be seated in the rear seats properly restrained in a child seat or the vehicle seat belt. Tabletop must be installed in base at all times when in use. When not in use table and base must be properly stowed. Never drive with table installed without properly using your seat belt. <sup>17</sup> Booster seat is only for children under 57" tall, between 48 and 85 lb. Always buckle seat belt properly. <sup>18</sup> For children at least one year old weighing between 22 and 50 lb and no more than 47" tall. <sup>19</sup> uconnect in-dash DVD capability is not available in all states. Never program while driving. GPS mapping may not be detailed in all areas or reflect current road regulations. See your dealer for details. <sup>20</sup> Always check visually for vehicles prior to changing lanes. <sup>21</sup> Always check entire surroundings visually before backing up.

## ENGINE AND TRANSMISSION

	SE	SXT
3.3L OHV FFV V6 <sup>14</sup> WITH 4-SPEED AUTOMATIC	24E <sup>1</sup>	24F 24G
3.8L OHV V6 WITH 6-SPEED AUTOMATIC		25K
4.0L SOHC V6 WITH 6-SPEED AUTOMATIC		28K 28L

## MECHANICAL

ENGINE BLOCK HEATER	O	O	O	O	O
---------------------	---	---	---	---	---

## EXTERIOR FEATURES

<b>DOORS</b> — Dual manual-sliding side — Dual power sliding side (included with Popular Equipment Group)	*	*	*		
<b>FOG LAMPS</b>				*	*
<b>GLASS</b> — Tinted — Sunscreen	*		*	*	*
<b>LIFTGATE</b> — Power (included in Popular Equipment Group)			P	O	*
<b>MIRRORS</b> — Foldaway, power-heated body black exterior — Foldaway, power-heated body-color exterior	*	*	*		*
<b>ROOF RACK</b> — Black		O	O	*	*
<b>SUNROOF</b> — Power (includes mini overhead consoles with two bins)					O

## INTERIOR FEATURES

<b>AIR CONDITIONING</b> — Manual temperature control — 3-Zone manual temperature control (included with Climate Group) — 3-Zone automatic temperature control (included with Premium Group)	*	*			
<b>CONSOLE</b> — Single rear overhead console system includes 4 storage bins, (video screens replace two bins) 2nd- and 3rd-row swivel LED lamps, halo light ring (replaced by dual mini overhead consoles if sunroof is ordered)				*	*
<b>FLOOR CONSOLE</b> — Premium floor console with power outlet, mounted to floor between first-row seats, removable and multi-adjustable for second-row passengers (included with Family Value Group)				P	P
<b>HOMELINK® UNIVERSAL TRANSCIEVER</b> — Programmable, 3-function with remote controls for garage door opener, interior/exterior home lighting or security devices				*	*
<b>LIGHTING</b> — Rear swiveling reading/courtesy lamps — Portable rechargeable trouble light — LED, located in overhead that illuminates the front center cup holder and console				*	*
<b>MIRRORS</b> — Visor vanity — Illuminated visor vanity — Rearview auto-dimming mirror with integrated microphone for uconnect <sup>21</sup> phone (included with Security Group, uconnect gps or uconnect phone)	*	*	*		P

## INTERIOR FEATURES (CONTINUED)

	SE	SXT
<b>POWER ACCESSORY</b> — 115-volt auxiliary power inverter located on front of driver's side quarter trim panel (included with Entertainment Group #1)		P
<b>REMOTE START SYSTEM</b> (included with Family Value Group or Popular Equipment group)		P
<b>SHADES</b> — 2nd- and 3rd-row retractable (included in Family Value Group)		P
<b>SHIFT KNOB</b> — Urethane — Leather-wrapped	*	*
<b>SPEED CONTROL</b>	O	*
<b>STEERING WHEEL</b> — Luxury — Leather-wrapped — Mounted audio controls	*	*
<b>TRIP COMPUTER</b> — With temperature and compass display in instrument cluster — Electronic Vehicle Information Center — Display in instrument cluster, controls on steering wheel		*
<b>WINDOWS</b> — Front, power with driver's one touch down — Power, front with driver's one touch up/down, passenger with one touch down, power second-row and power third-row vents	*	*
<b>SEATING AND TRIM</b> Seats — Cloth-trimmed with Stain Repel seat fabric <sup>21</sup> — Leather-trimmed 1st- and 2nd-row	*	*
<b>FRONT</b> — Driver's lumbar support, manual — 8-way power driver's seat — 8-way power front-passenger seat — Heated front seats (included with Heated Seat Group)		*
<b>REAR</b> — Heated 2nd-row seats (included with Heated Seat Group) — 2nd-row swiveling bucket seats <sup>16</sup> (included with Flexible Seating Group) — 2nd-row swiveling removable bucket seats with child booster seats <sup>17</sup> — Power folding 3rd-row seat (included in Premium Group), power rear seat has power recline — 2nd-row 2-passenger bench seat with 2 integrated child seats <sup>18</sup>		P

RADIOS AND SOUND SYSTEMS	SE	SXT
<b>uconnect</b> — uconnect tunes includes AM/FM radio, DVD/CD/MP3-compatible player and 30GB media hard drive, ParkView® Rear Back-Up Camera, <sup>111</sup> 6 speakers (included with Entertainment Group #1 and Entertainment Group #2)	O	P
— uconnect gps <sup>111</sup> includes AM/FM radio, GPS Navigation, DVD/CD/MP3-compatible player and 30GB media hard drive, uconnect studios with SIRIUS® Satellite Radio, uconnect phone, <sup>111</sup> ParkView® Rear Back-Up Camera, <sup>111</sup> and rearview auto-dimming mirror with microphone for uconnect phone		O
— uconnect studios with SIRIUS Backseat TV™ — Includes one-year subscription		O
— uconnect studios with SIRIUS Satellite Radio — Includes 1-year subscription (available only in continental United States) (included with uconnect tunes)	P	•
<b>SOUND SYSTEM</b> — 4 speakers	•	•
— 6 speakers (included with uconnect tunes)	P	•
— <sup>111</sup> Infinity® Acoustic 9™ 9 amplified speakers with subwoofer includes 506-watt amplifier (included with Premium Group)		P
<b>SAFETY AND SECURITY</b>		
<b>ADJUSTABLE PEDALS</b> — Power adjustable (included with Popular Equipment Group)	P	•
<b>BLIND SPOT DETECTION</b> — Utilizes sensors in the vehicle bumper which help detect adjacent vehicles which may not appear in vehicle mirrors <sup>111</sup> (included with Security Group)		P
<b>PARKSENSE® REAR PARK ASSIST SYSTEM<sup>111</sup></b> — Assists while parking (included in Security Group)		P
<b>PARKVIEW® REAR BACK-UP CAMERA<sup>111</sup></b> — Included with uconnect tunes or uconnect gps	P	P
<b>REAR CROSS PATH</b> — Utilizes sensors in the vehicle bumper which help detect approaching vehicles as van is backed out of a parking spot <sup>111</sup> (included with Security Group)		P
<b>SECURITY ALARM</b> (included in Security Group)		P
<b>uconnect phone<sup>111</sup></b> — Hands-free communication system includes rearview auto-dimming mirror with microphone, and i-Pod connection in glove compartment (included with Security Group or Premium Group)		P
<b>PACKAGES</b>		
<b>EXTERIOR APPEARANCE GROUP</b> — Available in: Bright Silver Metallic, Inferno Red Crystal Pearl, Light Sandstone Metallic, Modern Blue Pearl and Stone White — Includes molded running boards (body-color), slush mats (color-keyed), door sill guards and rear splash guards (Authentic Dodge Accessories by Mopar)	O	O
<b>MOLDED RUNNING BOARDS</b> — Available in: Bright Silver Metallic, Inferno Red Crystal Pearl, Light Sandstone Metallic, Modern Blue Pearl and Stone White. (Authentic Dodge Accessories by Mopar)	O	O
<b>CLIMATE GROUP</b> — Includes three-zone manual air conditioning	O	

PACKAGES (CONTINUED)	SE	SXT
<b>ENTERTAINMENT GROUP #1</b> — Includes 6 speakers, 2nd-row overhead 9" video screen, single-disc DVD player, <sup>111</sup> wireless headphones and video remote control, 115V inverter, uconnect studios with SIRIUS Satellite Radio, uconnect tunes and ParkView Rear Back-Up Camera <sup>111</sup>	O	
<b>ENTERTAINMENT GROUP #2</b> — Includes 2nd-row overhead 9" video screen, 3rd-row overhead 9" video screen, single-disc DVD player, <sup>111</sup> uconnect tunes and wireless headphones and video remote control, and ParkView Rear Back-Up Camera <sup>111</sup> (must have power liftgate)		O
<b>FAMILY VALUE GROUP</b> — Includes remote start, premium floor console and 2nd- and 3rd-row window shades		O
<b>FLEXIBLE SEATING GROUP</b> — Includes Swivel 'n Go® seating system <sup>111</sup> with 2nd-row removable swiveling bucket seats and 2nd-row removable/stowable table (deletes Stow 'n Go® seats)	O	O
<b>HEATED SEAT GROUP</b> — Includes heated first- and second-row seats		O
<b>POPULAR EQUIPMENT GROUP</b> — Includes remote start, dual power sliding doors, remote liftgate and power adjustable pedals	O	
<b>PREMIUM GROUP</b> — Includes 3-zone automatic temperature control, rain-sensitive wipers, power folding third-row seat, <sup>111</sup> Infinity Acoustic 9 speakers, uconnect phone and rearview auto-dimming mirror with integrated microphone for uconnect phone <sup>111</sup>		O
<b>SECURITY GROUP</b> — Includes rearview auto-dimming mirror with integrated microphone for uconnect phone, <sup>111</sup> security alarm, uconnect phone, Blind Spot Detection, <sup>111</sup> Rear Cross Path, and ParkSense Rear Park Assist System <sup>111</sup>		O
<b>TRAILER TOW PREP GROUP</b> — Includes engine oil cooling, heavy-duty transmission oil cooling, heavy-duty engine cooling, heavy-duty radiator, trailer tow wiring harness, and load-leveling and height-control suspension. Additional Dodge Towing Accessories required and available through Mopar.		O

### 3/36 BASIC LIMITED WARRANTY

All Dodge vehicles are covered by the Chrysler 3-year/36,000-mile Basic Limited Warranty. See dealer for a copy of this limited warranty. Excludes normal maintenance and wear items.

About this catalog: Since the time of printing, some of the information you'll find in this catalog may have been updated. Ask your dealer for details. Some of the equipment shown or described throughout this catalog is available at extra cost. Specifications, descriptions, illustrative materials, and all competitive comparisons contained herein are as accurate as known at the time this publication was approved for printing. Chrysler LLC reserves the right to discontinue models at any time or change specifications without notice or without incurring obligation. All options are required in combination with other options. For the price of the model with the equipment you desire, or verification of specifications contained here, see your Dodge dealer. Dodge, HEMI, Mopar, Sentry Key, Stow 'n Go, Swivel 'n Go, SRT, SRT8, uconnect, and VES are registered trademarks of Chrysler LLC. "SIRIUS," the SIRIUS dog logo "SIRIUS Backseat TV" and related marks are trademarks of SIRIUS Satellite Radio Inc. All other trademarks, service marks and logos are the property of their respective owners. All rights reserved. Subscription required. Prices and programming content are subject to change. Not available in Alaska and Hawaii. For full terms and conditions, visit SIRIUS.com. ©2008 Viacom International Inc. All rights reserved. Insurance is underwritten by member companies of American International Group, Inc. Bluetooth is a registered trademark of Bluetooth SIG Inc. Boston, Boston Acoustics, and the Boston logo are registered trademarks of Boston Acoustics, Inc. HomeLink is a registered trademark owned by Johnson Controls, Inc. The Dodge Rewards Visa credit card is issued by RA Card Services, N.A.

dodge.com • 800-4ADODGE



The 2009 Dodge Grand Caravan includes a Lifetime Powertrain Limited Warranty. Non-transferable. Not available on SRT, diesel vehicles, Sprinter, Ram Chassis Cab, Hybrid System components (including transmission) and certain fleet vehicles. See dealer for a copy of limited warranty and details.

Chrysler Financial delivers Chrysler, Jeep, and Dodge customers a personal, worry-free automotive financing experience. More than just another finance company with competitive rates, Chrysler Financial stands behind you through life's twists and turns by offering fast approvals, flexible terms and unparalleled personalized service. Visit cf.com or your Dodge dealer to discover all that Chrysler Financial offers. Taking care of you, all along the way.

The only insurance guaranteed to repair your vehicle using Authentic Dodge Collision Repair Parts by Mopar for as long as you own your Dodge vehicle, and up to \$100 off your deductible when those repairs are done at a Dodge dealership — all at rates that are tough to beat. For a free quote, visit [dodgeautoinsurance.com](http://dodgeautoinsurance.com) or call 800-836-1598 and mention keycode QL9XXX.

Your Dodge is one of the best performing vehicles on the road. Why not protect your investment with a Chrysler Service Contract or Maintenance Plan? For more information, see your Dodge dealer, call 800-442-2666 or visit [servicecontracts.chrysler.com](http://servicecontracts.chrysler.com).

Enhance your Dodge Grand Caravan with Authentic Dodge Accessories by Mopar. They're designed specifically for your vehicle, for exceptional fit, finish and performance. Visit your dealership or [mopar.com](http://mopar.com).

This suite of integrated digital systems bundles entertainment, information, and communication. For more information visit your dealer.

SIRIUS Satellite Radio delivers over 130 channels, including 100% commercial-free music, sports, news, talk, entertainment, traffic and weather. Factory-installed SIRIUS Satellite Radio includes a one-year subscription. For more information, go to [SIRIUS.com](http://SIRIUS.com).

SIRIUS Backseat TV™ features the best brands in family entertainment 24/7: Nickelodeon™, Disney Channel and Cartoon Network Mobile — plus all your favorite SIRIUS Satellite Radio audio entertainment. It's perfect for families on the go. All three channels are directly broadcast to the SIRIUS tuner and sent to your backseat video monitor(s). For added flexibility, rear-seat passengers can enjoy SIRIUS Backseat TV while front-seat occupants listen to SIRIUS Satellite Radio. Enjoy car trips with the family and never again be asked, "Are we there yet?"

Earn 5 points per dollar charged at your Dodge dealership and 1 point per dollar everywhere Visa® is accepted. Whether you're saving points for your down payment or for your vehicle's scheduled maintenance, it pays to be a Dodge Rewards Visa cardholder. For more information or to apply, visit [dodgecreditcard.com](http://dodgecreditcard.com) or call 800-478-6179.

The Dodge Goods catalog is a handpicked collection of items bearing the powerful Dodge name — from Motorsports apparel and collectible die-cast models to the latest in work and ranch wear. It's all found at [dodge.com/goods](http://dodge.com/goods). Call 877-789-DODGE (3634) for a free catalog.

Honoring Those Who Serve. Chrysler LLC proudly supports the members of the U.S. Armed Forces and their families.