

2013 
DODGE GRAND CARAVAN





GRAND CARAVAN CREW SHOWN IN BRILLIANT BLACK CRYSTAL PEARL.

1983 - *THE WORLD'S FIRST MINIVAN, DODGE CARAVAN,
ROLLS OFF THE ASSEMBLY LINE.*



NEARLY 30 YEARS AGO, DODGE HAD THE VISION TO SEE SOMETHING THAT THE WORLD DIDN'T KNOW IT WAS MISSING. BUT MORE IMPORTANT, HAD THE COURAGE TO BUILD IT. NO ONE ASKED DODGE TO BUILD THE MINIVAN. DRIVERS DIDN'T EVEN KNOW THEY NEEDED ONE. BUT ONCE BUILT, FAMILIES FLOCKED. WEEKEND WARRIORS ARRIVED. HOME IMPROVEMENT FANATICS AND SMALL BUSINESS OWNERS LINED UP. AND THE LEGEND OF DODGE GRAND CARAVAN WAS SET. TODAY, IT HOLDS TITLES, INCLUDING AMERICA'S BEST-SELLING^[1] AND MOST AWARDED^[2] MINIVAN EVER, THE MOST POWERFUL ENGINE IN ITS CLASS,^[3] AND INDUSTRY-EXCLUSIVE FEATURES. BUT MOST IMPORTANT, IT HOLDS THE CONFIDENCE OF FAMILIES, THEIR HOBBIES, AND THEIR LIVELIHOODS. THIS IS THE 2013 GRAND CARAVAN.

MOST AFFORDABLE SEVEN-PASSENGER VEHICLE IN AMERICA^[4] // MOST VERSATILE VEHICLE IN ITS CLASS^[5] // INDUSTRY-EXCLUSIVE^[3] SUPER STOW 'N GO[®] SEATING AND STORAGE // OFFERS AN INDUSTRY-EXCLUSIVE^[3] BLU-RAY™ DVD/VIDEO SYSTEM // CLASS-EXCLUSIVE^[3] DUAL INDEPENDENT DVD PLAYERS // AN AWARD-WINNING 283-HORSEPOWER PENTASTAR[®] V6 ENGINE WITH 25 HIGHWAY MPG* // GRAND CARAVAN – A 2012 INSURANCE INSTITUTE FOR HIGHWAY SAFETY (IIHS) TOP SAFETY PICK // 2012 *CONSUMERS DIGEST* BEST BUY

*A NOTE ABOUT THIS BROCHURE: ALL DISCLAIMERS AND DISCLOSURES CAN BE FOUND ON THE BACK COVER.
†EPA ESTIMATED 17 CITY/25 HIGHWAY MPG.



TAILGATE SEAT SHOULD NOT BE USED WHEN VEHICLE IS IN MOTION. ALWAYS WEAR YOUR SEAT BELT.

1996 - THE FIRST MINIVAN TO OFFER DUAL SLIDING DOORS AND EASY OUT ROLLER SEATS.



GRAND CARAVAN CREW SHOWN IN TRUE BLUE PEARL.

THE BAR'S BEEN SET. IT'S DETAILS LIKE SOPHISTICATED LED TAILLAMPS AND AVAILABLE FOG LAMPS THAT GIVE GRAND CARAVAN SWAGGER. IT'S THE DYNAMIC STANCE, SCULPTED HOOD, PRONOUNCED FRONT AND REAR FASCIAS, AND FLUID LINES AND CURVES THAT SET GRAND CARAVAN APART ON THE ROAD. IT'S AVAILABLE JEWELRY IN THE FORM OF SHINY CHROME OR TRENDY MONOCHROMATIC ACCENTS THAT ALLOW GRAND CARAVAN TO HOLD YOUR ATTENTION JUST AS WELL AS IT HOLDS A SEVEN-PERSON CREW AND CARGO WITH EASE. SURPRISED? MAYBE SOME PEOPLE WOULDN'T DESCRIBE A "PEOPLE HAULER" THIS WAY, BUT THOSE PEOPLE SURELY AREN'T LOOKING AT GRAND CARAVAN. AFTER ALL, THIS IS GRAND CARAVAN WE'RE TALKING ABOUT. IT'S PART OF THE BOLD DODGE BLOODLINE. GOOD LOOKS AND INNOVATION ARE IN ITS DNA.



GRAND CARAVAN CREW SHOWN WITH SANDSTORM CLOTH INTERIOR (LATE AVAILABILITY).

NO ONE DOUBTED THERE WOULD BE PLENTY OF FLEXIBLE SEATING AND STORAGE OPTIONS BEHIND GRAND CARAVAN'S AVAILABLE DUAL POWER SLIDING DOORS. BUT THE COMFORT, LUXURY, AND SUPERIOR CRAFTSMANSHIP AT EVERY TURN IS A GUARANTEED DOUBLE TAKE. ENGINEERS CAREFULLY CONSIDERED EVERY DETAIL AND EVERY TOUCH POINT INSIDE BECAUSE NO MATTER HOW MANY LITTLE LEAGUERS ARE TRANSPORTED OR HOW MANY LANDSCAPING SUPPLIES ARE HAULED, THERE WILL ALWAYS BE A DRIVER IN THE FRONT SEAT DESERVING OF A LITTLE PAMPERING.

INTERIOR DESIGN DETAILS INCLUDE SOFT-TOUCH SURFACES, CHROME ACCENTS, AND MUST-HAVE FEATURES INTUITIVELY PLACED FOR EASE OF DRIVER AND PASSENGER USE. AVAILABLE HEATED FRONT- AND SECOND-ROW SEATS AND AN AVAILABLE CLASS-EXCLUSIVE⁽¹⁾ FULL-CIRCUMFERENCE HEATED STEERING WHEEL KEEP THE CHILL AWAY. THE INTEGRATED INSTRUMENT PANEL OFFERS A UNIFIED LOOK WITH TOUCHES OF CHROME. R/T MODELS SHOW OFF A SPORTIER SIDE WITH BLACK LEATHER-TRIMMED SEATS FEATURING STRIKING RED STITCHING AND INTERIOR ACCENTS OF EQUALLY MODERN BRUSHED ALUMINUM.

AN AVAILABLE CLASS-EXCLUSIVE⁽²⁾ FULLY INTEGRATED SUPER CONSOLE FEATURES A LARGE DRIVER-ACCESSIBLE STORAGE AREA AND ANOTHER LARGE STORAGE DRAWER FOR BOTH FRONT- AND SECOND-ROW PASSENGERS. BOTH AREAS CAN BE COVERED WITH SLIDING DOORS TO KEEP TRAVEL ITEMS OUT OF SIGHT. TWO POWER OUTLETS — PERFECT FOR CHARGING MEDIA DEVICES — ARE WITHIN EASY REACH OF THE DRIVER AND FRONT PASSENGER. THE CONSOLE'S FOUR CUP HOLDERS INCLUDE TWO CUP HOLDERS THAT CAN HOLD EITHER 12-OZ CANS OR 1-LITER BOTTLES. THIS IS THE KIND OF SMART, WELL-DESIGNED INTERIOR THE COMPETITION JUST CAN'T COMPETE WITH.



HOW ABOUT 81 DIFFERENT SEATING CONFIGURATIONS?

MOST VERSATILE VEHICLE IN ITS CLASS!^{1/31}
FLIP, FOLD, AND TUMBLE YOUR WAY TO
THE PERFECT INTERIOR.



STOW'N'GO®





NO ONE ELSE HAS
SUPER STOW 'N GO^{®(3)}

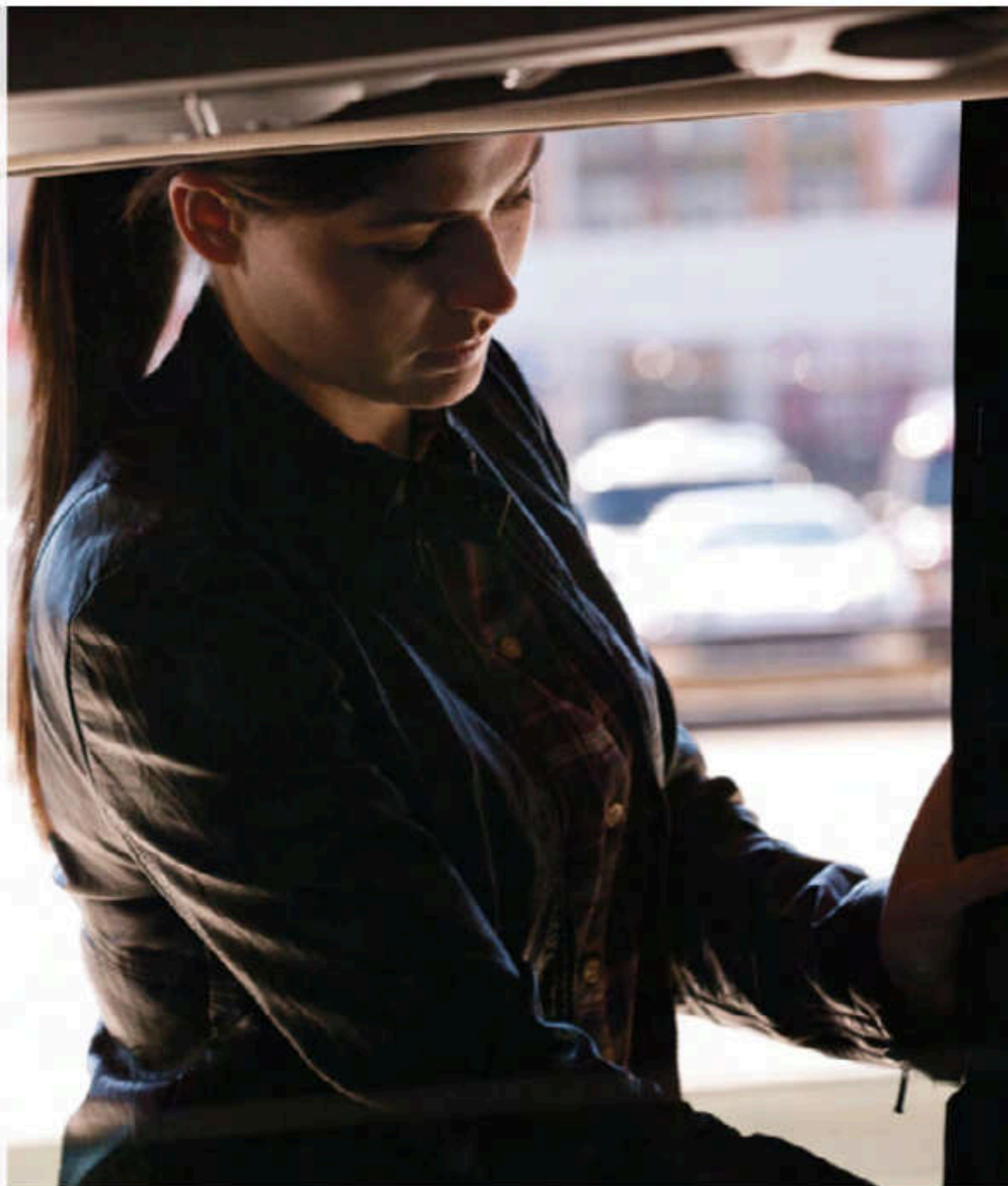


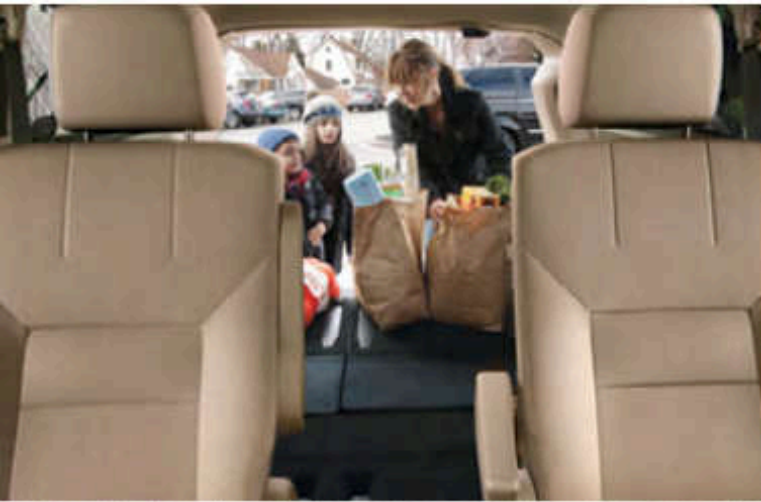
SUPER STOW 'N GO — EFFORTLESSLY FOLD SECOND-ROW SEATS INTO THE FLOOR IN A MATTER OF SECONDS WITH ONE-HAND OPERATION.

ONLY GRAND CARAVAN OFFERS SECOND-ROW *SUPER STOW 'N GO* SEATS⁽³⁾ THAT FOLD INTO THE FLOOR. EVERY OTHER MINIVAN REQUIRES THE CUMBERSOME PROCESS OF PHYSICALLY REMOVING THE SECOND-ROW SEATS FROM THE VEHICLE, OR FOLDING THEM DOWN ONTO THE FLOOR INSTEAD OF INTO IT TO CREATE A FLAT LOAD FLOOR, OR HAS SEATS THAT JUST FOLD IN ON THEMSELVES, LEAVING A BULKY HEAP THAT RESTRICTS OPTIMUM CARGO CAPACITY. ONLY GRAND CARAVAN HAS SECOND-ROW IN-FLOOR STORAGE BINS!⁽⁴⁾ PROVIDING ANOTHER CLEVER AND INVALUABLE ASSET. *SUPER STOW 'N GO* SEATS ALSO ALLOW FOR COMPLETELY FREE-FROM-OBSTACLES⁽⁵⁾ ENTRY AND ACCESS TO THE THIRD-ROW SEATS — SOMETHING EVERYONE WILL APPRECIATE, ESPECIALLY THOSE HELPING LITTLE ONES INTO CHILD RESTRAINT SEATS. THE 60/40 SPLIT-FOLDING *SUPER STOW 'N GO* THIRD-ROW SEAT EASILY FOLDS INTO THE FLOOR BIN BEHIND IT WITH A FEW EASY PULLS ON THE CONVENIENTLY NUMBERED STRAPS. IT ALSO CAN FULLY FLIP OVER TO THE TAILGATE SEATING POSITION. IN FACT, THERE ARE 81 DIFFERENT SEATING CONFIGURATIONS AVAILABLE ON GRAND CARAVAN. WHY SO MANY? BECAUSE THIS IS NOT A ONE-SIZE-FITS-ALL INTERIOR. IT'S DESIGNED TO MOVE, FOLD, TUMBLE, AND STOW RIGHT ALONG WITH YOUR EVER-CHANGING LIFESTYLE.



ALL ABOUT OPTIONS. WHO AND WHAT YOU NEED TO TAKE TODAY WILL NOT BE THE SAME TOMORROW. WITH THAT GOLDEN RULE IN MIND, GRAND CARAVAN'S INTERIOR WAS INTUITIVELY DESIGNED TO BE FLUID. KEEP ALL ROWS OF SEATING UPRIGHT FOR SEVEN-PASSENGER SEATING. EASILY TUCK SOME OR ALL SECOND-ROW SUPER STOW 'N GO® SEATS AND 60/40 SPLIT-FOLDING STOW 'N GO THIRD-ROW SEATS INTO THE FLOOR TO CONVERT GRAND CARAVAN FROM A PASSENGER-CARRYING POWERHOUSE TO AN IMPRESSIVE CARGO HAULER. WITH ALL SEATS FOLDED INTO THE FLOOR, THE FLAT CARGO FLOOR AREA OFFERS 144.2 CU FT OF CARGO ROOM. ACCOMMODATING BOTH PEOPLE AND TRAVEL ITEMS IS JUST AS EASY, THANKS TO SECURE, HIDDEN STORAGE BINS LOCATED BEHIND THE FRONT AND THIRD ROWS. OPT FOR AVAILABLE POWER DUAL SLIDING DOORS AND POWER LIFTGATE (STANDARD ON SXT, CREW, AND R/T), AND ALL THAT LOADING AND UNLOADING JUST GOT EVEN EASIER.





2004 - THE INTRODUCTION OF THE STILL INDUSTRY-EXCLUSIVESM
STOW 'N GOSM SEATING AND STORAGE SYSTEM.



PROPERLY SECURE ALL CARGO.

GRAND CARAVAN CREW SHOWN WITH SANDSTORM CLOTH INTERIOR (LATE AVAILABILITY).



SEGMENT-EXCLUSIVE¹¹¹ SECOND-ROW IN-FLOOR STORAGE BINS



CLASS-EXCLUSIVE¹¹¹ DUAL INDEPENDENT DVD PLAYERS

THE DISNEY GAMES SHOWN ABOVE — DISNEY/PIXAR BRAVE, THE VIDEO GAME AND DISNEY EPIC MICKEY, THE POWER OF TWO — ARE AVAILABLE NOW FOR XBOX 360. ©DISNEY/PIXAR. ©2012 DISNEY.





CLASS-EXCLUSIVE⁽³⁾ SUPER CONSOLE



INDUSTRY-EXCLUSIVE⁽³⁾ BLU-RAY™ PLAYER



IT PAYS TO SWEAT THE DETAILS. IT'S NOT JUST THE BIG THINGS — BEST-IN-CLASS⁽¹⁾ FEATURES, AWARDS, CLASS-LEADING⁽²⁾ POWER, INVENTIVE SEATING, AND FLEXIBILITY — BUT THE SMALLER DETAILS THAT MAKE OWNING A DODGE GRAND CARAVAN SUCH A PLEASURE. LIKE AVAILABLE POWER SLIDING DOORS AND LIFTGATE. SEATS THAT FOLD INTO THE FLOOR. TECHNOLOGY KIDS CRAVE AND ADULTS AREN'T OVERWHELMED BY. AN AVAILABLE OVERHEAD RAIL SYSTEM THAT FEATURES THE SOFT GLOW OF HALO LIGHTING. AVAILABLE DRIVER CONVENIENCES LIKE A SEGMENT-EXCLUSIVE⁽¹⁾ FULL-CIRCUMFERENCE HEATED STEERING WHEEL AND A CONVERSATION MIRROR FOR EASIER MONITORING OF REAR-SEAT PASSENGERS. STADIUM-STYLE SECOND- AND THIRD-ROW SEATS THAT GIVE EVERYONE A MORE ENJOYABLE RIDE, AS DOES AVAILABLE FRONT- AND SECOND-ROW HEATED SEATS. IT'S EVERYTHING TOGETHER THAT HAS HELPED MAKE GRAND CARAVAN THE BEST-SELLING MINIVAN⁽¹⁾ ... EVER!

PROPERLY SECURE ALL CARGO.



THE AVAILABLE SEGMENT-EXCLUSIVE⁽¹⁾ STOW 'N PLACE[®] ROOF RACK SYSTEM OFFERS THE CONVENIENCE OF CROSSBARS THAT ATTACH TO THE SIDE RAILS WHEN NOT IN USE FOR IMPROVED FUEL EFFICIENCY AND REDUCED WIND NOISE.



SEGMENT-EXCLUSIVE

2001- *THE FIRST MINIVAN TO OFFER POWER UP AND DOWN LIFTGATE.
THE FIRST MINIVAN WITH POWER DUAL SLIDING DOORS.*

GRAND CARAVAN SXT SHOWN IN BILLET SILVER METALLIC.



5 YEAR / 100,000 MILE
POWERTRAIN WARRANTY²¹

GRAND CARAVAN — A 2012 INSURANCE INSTITUTE FOR HIGHWAY SAFETY (IIHS) TOP SAFETY PICK.

BECAUSE IT'S THE LITTLE THINGS THAT MATTER MOST, GRAND CARAVAN OFFERS 45 STANDARD AND AVAILABLE SAFETY AND SECURITY FEATURES. **ELECTRONIC STABILITY CONTROL (ESC)**⁽⁶⁾ IN ADVERSE CONDITIONS, THE STANDARD ESC WITH ELECTRONIC BRAKE ASSIST WORKS WITH AN ADVANCED ALL-SPEED TRACTION CONTROL SYSTEM TO HELP THE DRIVER MAINTAIN VEHICLE DIRECTIONAL STABILITY AND LIMIT OVERSTEERING OR UNDERSTEERING. ELECTRONIC BRAKE ASSIST DETECTS CONDITIONS WHEN MAXIMUM FORCE IS NEEDED FOR OPTIMUM STOPPING POWER. **ANTILOCK BRAKE SYSTEM (ABS)**. STANDARD FOUR-WHEEL ANTILOCK DISC BRAKES AFFORD PREMIUM STOPPING POWER FROM STATE-OF-THE-ART ELECTRONICS THAT PROVIDE FASTER SYSTEM RESPONSE. ABS SENSES AND PREVENTS WHEEL LOCKUP, OFFERING IMPROVED STEERING CONTROL UNDER EXTREME BRAKING AND/OR SLIPPERY CONDITIONS. **SEVEN STANDARD AIR BAGS!**⁽⁷⁾ SIDE-CURTAIN AIR BAGS AND FRONT-SEAT SIDE-MOUNTED AIR BAGS DEPLOY, BLANKETING OUTBOARD POSITIONS IN ALL THREE ROWS OF SEATING. A DRIVER'S KNEE BLOCKER AIR BAG HELPS, IN THE UNFORTUNATE EVENT OF A COLLISION, POSITION THE DRIVER IN RELATION TO THE FRONT AIR BAG. **PARKVIEW® REAR BACK-UP CAMERA!**⁽⁸⁾ THIS AVAILABLE SYSTEM DISPLAYS AN ACCURATE VISUAL REFERENCE OF WHAT IS BEHIND YOUR VEHICLE WHEN YOU ARE IN REVERSE. **PARKSENSE® REAR PARK ASSIST!**⁽⁹⁾ WHEN IN REVERSE, THESE AVAILABLE SENSORS DETECT THE PRESENCE OF OBJECTS IN THE BACKUP PATHWAY AND PROVIDE AN AUDIBLE AND VISUAL WARNING. **AVAILABLE BLIND SPOT MONITORING (BSM)**⁽¹⁰⁾ AND **REAR CROSS-PATH DETECTION!**⁽⁶⁾ DUAL RADAR SENSORS CONSTANTLY MONITOR DRIVER BLIND SPOTS, PROVIDING NOTIFICATION OF AN ENCROACHING VEHICLE VIA ILLUMINATING ICONS ON SIDEVIEW MIRRORS AND BY AN AUDIBLE CHIME IF THE TURN SIGNAL IS ACTIVATED. WHEN IN REVERSE, REAR SENSORS WARN THE DRIVER WITH AN AUDIBLE CHIME IF CROSS TRAFFIC APPROACHES THE VEHICLE. **STANDARD TRAILER SWAY CONTROL!**⁽⁶⁾ THIS NEW SYSTEM USES SENSORS TO RECOGNIZE WHEN VEHICLE OR TRAILER MOTION IS OCCURRING THAT IS NOT THE RESULT OF STEERING INPUT. THE SYSTEM THEN CORRECTS THE SWAY BY APPLYING BRAKE PRESSURE ON ALTERNATING WHEELS.

CLASS-EXCLUSIVE⁽¹⁾ REAR CROSS-PATH DETECTION⁽¹⁾

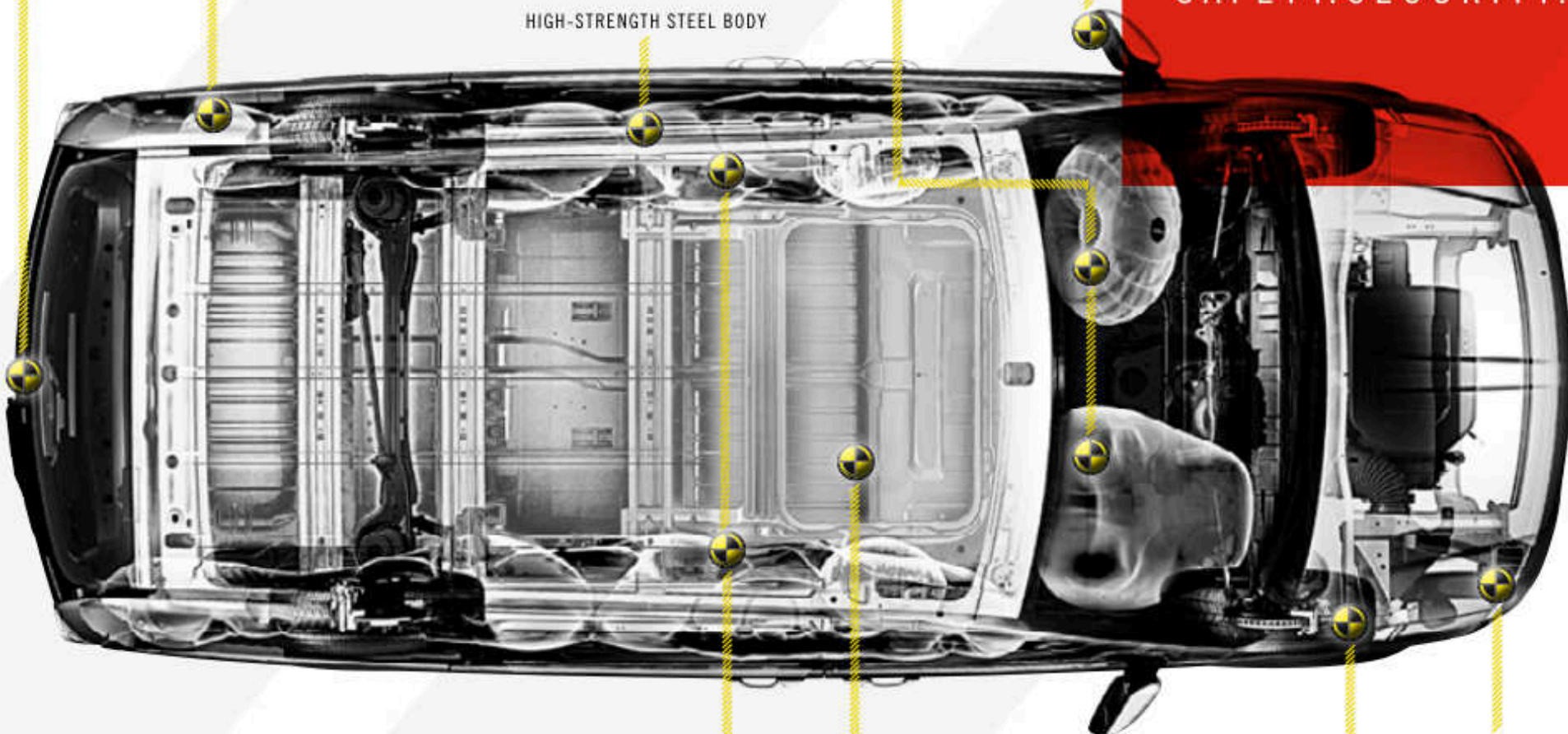
BLIND SPOT MONITORING (BSM)⁽¹⁾

PARKSENSE REAR PARK ASSIST⁽⁹⁾

DRIVER'S KNEE BLOCKER AIR BAG⁽⁷⁾ AND DRIVER AND PASSENGER FRONT AIR BAGS⁽⁷⁾

HIGH-STRENGTH STEEL BODY

SAFETY. SECURITY.



CRUMPLE ZONES

ACTIVE FRONT HEAD RESTRAINT SYSTEM⁽¹⁰⁾

SIDE-CURTAIN AIR BAGS⁽⁷⁾ FOR ALL THREE ROWS

FOUR-WHEEL ANTILOCK DISC BRAKES



WELL-CONNECTED



ENGINEERED WITH TECHNOLOGY, GRAND CARAVAN AND UCONNECT® HELP KEEP YOU CLOSE TO YOUR FAVORITE PEOPLE, MUSIC, AND PLACES. UCONNECT FEATURES EASY-TO-NAVIGATE ICONS FOR RADIO AND SIRIUSXM SATELLITE RADIO^{(1)(1)*} CONTROLS, PERSONAL DEVICES SUCH AS AN IPOD® OR SMARTPHONE, CLIMATE CONTROLS, AND AVAILABLE NAVIGATION AND BLUETOOTH® COMPATIBLE PHONES. BRING ALONG YOUR OWN TUNES VIA REMOTE SD CARD, REMOTE USB PORT WITH IPOD MOBILE DEVICE CONTROL, OR BLUETOOTH WIRELESS STREAMING. THE USB PORT CAN ALSO CHARGE YOUR COMPATIBLE DEVICES. WITH AVAILABLE VOICE COMMAND⁽¹⁾⁽²⁾ AND FRONT- AND REAR-MOUNTED STEERING WHEEL CONTROLS, THERE'S NO TAKING YOUR HANDS OFF THE WHEEL OR EYES OFF THE ROAD. GIVE VOICE COMMANDS FOR THINGS LIKE PHONE OPERATION, RADIO/CD FUNCTIONS, AND ACCESSING YOUR DIGITAL MEDIA PLAYERS.



OPT FOR GARMIN® NAVIGATION FOR TURN-BY-TURN DIRECTIONS, LANE GUIDANCE, OR LOCATING NEARBY RESTAURANTS, SHOPPING, HOSPITALS, OR LOCAL POINTS OF INTEREST. ADD AVAILABLE SIRIUSXM TRAFFIC⁽¹⁾⁽¹⁾ FOR COMPREHENSIVE TRAFFIC INFORMATION SENT DIRECTLY TO YOUR GRAND CARAVAN. THIS INCLUDES UPDATED INFORMATION ON TRAFFIC SPEED AND FLOW, ACCIDENTS, CONSTRUCTION, AND ROAD CLOSURES. CHOOSE SIRIUSXM TRAVEL LINK⁽¹⁾⁽¹⁾ TO BRING LOCAL AND NATIONAL WEATHER FORECASTS, FUEL PRICES FOR LOCAL GAS STATIONS, IN-GAME AND FINAL SPORTS SCORES, WEEKLY SPORTS SCHEDULES, AND LOCAL MOVIE THEATER LISTINGS RIGHT TO YOUR VEHICLE. FOR MORE INFORMATION, GO TO DRIVEUCONNECT.COM

*FIRST YEAR OF SERVICE IS INCLUDED.

IT'S EVEN VERSATILE AT ENTERTAINING. NOT ONLY IS GRAND CARAVAN THE MOST VERSATILE CARGO AND PASSENGER VEHICLE IN ITS CLASS⁽¹⁾ BUT IT OFFERS THESE MUST-HAVE ENTERTAINMENT FEATURES FOR THE WHOLE FAMILY — AVAILABLE DUAL SCREEN ENTERTAINMENT SYSTEMS, GAMING CONNECTIVITY, WIRELESS HEADSETS, AND MORE. **INDUSTRY-EXCLUSIVE⁽¹⁾ BLU-RAY™ PLAYER.** WATCH THE LATEST MOVIES IN HIGH QUALITY VIA THE AVAILABLE NEW CENTER STACK BLU-RAY PLAYER. THE SYSTEM PLAYS BOTH BLU-RAY AND DVD FORMATS AND CAN BE VIEWED FROM BOTH THE SECOND- AND THIRD-ROW ALL-NEW VGA SCREENS. **DUAL DVD PLAYERS.** WITH TWO AVAILABLE DVD PLAYERS, PASSENGERS CAN CHOOSE TO WATCH THE SAME MOVIE OR DIFFERENT ONES. OR SOME PASSENGERS CAN OPT TO CONNECT THEIR GAMING SYSTEM WHILE OTHERS ENJOY A MOVIE. **ALL-NEW VGA DVD SCREENS.** GRAND CARAVAN'S DUAL DVD SCREENS ARE UPDATED TO VGA RESOLUTION FOR BETTER IMAGE QUALITY AND CAPABILITY. **NEW REAR-SEAT HDMI/USB PORTS.** REAR-SEAT PASSENGERS CAN TAP INTO THE ENTERTAINMENT SYSTEM VIA THESE PORTS.



2011 - THE FIRST MINIVAN TO OFFER THE STILL CLASS-EXCLUSIVE⁽¹⁾
FUEL ECONOMIZER FEATURE.



GRAND CARAVAN R/T SHOWN IN REDLINE 2-COAT PEARL.

- 
- BEST-IN-CLASS¹³¹ 283 HP AND 260 LB-FT OF TORQUE
 - BEST-IN-CLASS¹³¹ TOWING — 3,600 LB*



3.6-LITER DOHC PENTASTAR® VARIABLE VALVE TIMING (VVT) V6 — SMART FROM THE WORD GO.

CONFIDENCE ISN'T JUST FOUND IN GRAND CARAVAN'S SAFETY AND SECURITY. IT'S ALSO FOUND IN THE ACCELERATION OF THE 3.6-LITER DOHC PENTASTAR VVT V6 ENGINE. WITH BEST-IN-CLASS¹³¹ 283 HORSEPOWER AND 260 LB-FT OF TORQUE AND BEST-IN-CLASS¹³¹ TOWING CAPACITY UP TO 3,600 LB,* THIS ENGINE ISN'T SHY ABOUT PERFORMING. BUT THESE DAYS, WHAT'S POWER WITHOUT FUEL EFFICIENCY? ADVANCED ENGINE TECHNOLOGY ALLOWS FOR A GENEROUS 25 HIGHWAY MPG,¹ WHICH TRANSLATES TO AN ESTIMATED 500 HIGHWAY MILES ON A SINGLE TANK OF GAS. THE ONLY THING BETTER THAN NUMBERS LIKE THESE ARE THE ENGINE'S DURABILITY-ENHANCING FEATURES, LIKE AN ADVANCED OIL FILTER SYSTEM THAT HELPS TO ELIMINATE OIL SPILLS AND CONTAINS AN INCINERABLE FILTER ELEMENT FOR MORE EFFICIENT DISPOSAL. THE GRAND CARAVAN'S 3.6-LITER V6 IS ALSO FLEX FUEL CAPABLE, OFFERING CONSUMERS THE CHOICE OF USING EITHER GASOLINE OR ETHANOL (E85) FUEL. GRAND CARAVAN'S OVERALL RIDE QUALITY IS BOOSTED BY TIGHT SUSPENSION TUNING, AN EFFICIENT AND EASY-TO-OPERATE GATED SHIFTER, AND A SEGMENT-EXCLUSIVE¹³¹ FUEL-ECONOMIZER FEATURE THAT ALTERS SHIFT PATTERNS TO HELP IMPROVE REAL-WORLD FUEL EFFICIENCY.

*WHEN PROPERLY EQUIPPED. ¹EPA ESTIMATED 17 CITY/25 HIGHWAY MPG.



GRAND CARAVAN R/T SHOWN IN REDLINE 2 COAT PEARL WITH REMOVABLE ROOF RACK, ROOF BOX CARGO CARRIER, FRONT AIR DEFLECTOR, AND MOLDED RUNNING BOARDS.

AUTHENTIC DODGE ACCESSORIES

SEE YOUR DEALER FOR A BROCHURE OF THE FULL LINE OF
AUTHENTIC ACCESSORIES FOR YOUR DODGE GRAND CARAVAN.



WITH YOU EVERY MILE. MOPAR[®] IS WITH YOU THE MOMENT YOU GET YOUR NEW KEYS AND FOR EVERY MILE THEREAFTER. IT'S A BRAND THAT HELPS MAINTAIN AND MAKE YOUR RIDE YOUR OWN WITH PARTS AND ACCESSORIES OF EVERY KIND — ALL ORIGINAL EQUIPMENT DESIGNED BY THE SAME ENGINEERS OF YOUR VEHICLE — SPECIFICALLY FOR YOUR MODEL. IT'S NOT GUESSWORK — IT'S ABOUT GETTING-IT-RIGHT-THE-FIRST-TIME SATISFACTION WITH HIGH-QUALITY MATERIALS THAT HAVE BEEN THOROUGHLY TESTED FOR THE LONG HAUL. MOPAR ALSO ASSURES YOU WITH EXPERT TECHNICIANS WHO KNOW YOUR MAKE AND MODEL BEST, VEHICLE PROTECTION PLANS, EXPRESS LANE SERVICE, AND AN ONLINE OWNER CONNECT WEB SITE (REGISTER AT OWNERS.DODGE.COM). WELCOME TO MOPAR NATION. LEARN MORE ABOUT THE WORLD OF MOPAR AND ALL IT HAS TO OFFER AT MOPAR.COM

PROPERLY SECURE ALL CARGO.



GRAND CARAVAN AVP/SE

POWERTRAIN

- 3.6L 283-horsepower Pentastar® Variable Valve Timing (VVT) V6
- 6-speed automatic transmission with Electronic Range Select

SELECT AVP STANDARD EQUIPMENT

- 2nd-row folding, reclining, removable bench seats
- 2nd-row storage tubs provide concealed storage
- 3rd-row Stow 'n Go® with tailgate seats
- Electronic Stability Control (ESC)⁽¹⁾ with All-Speed Traction Control and Brake Assist
- 7 air bags:⁽²⁾ advanced multistage front, side-curtain, front-seat side-mounted, and driver's knee blocker air bags
- Active front head restraints⁽¹⁰⁾
- 4-wheel antilock disc brakes
- 16-inch wheel covers
- Trailer sway control⁽¹⁾
- Power front windows and locks
- Power heated mirrors
- Remote keyless entry
- Tilt/telescoping steering wheel with integrated steering wheel-mounted audio and speed controls
- Remote keyless entry
- Air conditioning with dual-zone temperature control
- Uconnect® 130 AM/FM/CD/MP3 radio with 4 speakers
- Black door handles, bodyside molding, and lower sill appliqué
- Fuel economizer button

SELECT SE STANDARD EQUIPMENT OVER AVP

- 2nd-row bucket seats with Super Stow 'n Go — fold in the floor with simple 1-hand operation
- Air conditioning with 3-zone manual temperature control
- Mini floor console with cup holders
- Deep-tinted sunscreen glass
- Body-color door handles, bodyside molding, and lower sill appliqué
- Easy-clean floor mats
- Uconnect 130 AM/FM/CD/MP3 radio with 6 speakers

SELECT OPTIONAL EQUIPMENT

- 2nd-row bucket seats with Super Stow 'n Go — fold in the floor with simple 1-hand operation (AVP)
- Uconnect Hands-Free Group
- SE Plus Group (SE)
- SiriusXM Satellite Radio⁽¹¹⁾ with 1-year subscription (late availability)
- 17-inch aluminum wheels (SE)
- Mopar® Uconnect Web⁽¹²⁾
- Engine block heater



GRAND CARAVAN SXT

POWERTRAIN

- 3.6L 283-horsepower Pentastar VVT V6
- 6-speed automatic transmission with Electronic Range Select

SELECT STANDARD EQUIPMENT OVER SE

- 17-inch Tech Silver aluminum wheels
- Power dual sliding doors with obstacle detection system⁽¹⁴⁾
- Power liftgate with obstacle detection system⁽¹⁴⁾
- Stow 'n Place® roof rack with Black side rails
- Power adjustable pedals
- Super console
- Power front windows with driver's 1-touch up/down
- Power 2nd-row windows and power 3rd-row vents
- Body-color power, heated mirrors

SELECT OPTIONAL EQUIPMENT

- Uconnect Hands-Free Group
- Security Group
- SiriusXM Satellite Radio⁽¹¹⁾ with 1-year subscription
- Entertainment Group #1 — Rear DVD with 2nd-row 9-inch screen
- Entertainment Group #4 — Rear DVD with 2nd-row 9-inch VGA screen (late availability)
- Entertainment Group #5 — Rear Blu-ray⁽¹³⁾/DVD with 2nd- and 3rd-row 9-inch VGA screens (late availability)
- Uconnect 430 with 6.5-inch touch screen, CD/DVD/MP3 radio
- Uconnect 430N with 6.5-inch touch screen, Garmin® Navigation, and CD/DVD/MP3 radio
- 8-way power driver's seat with 2-way lumbar
- Removable center console
- Mopar Uconnect Web⁽¹²⁾
- Engine block heater

2012 — OVER 7.3 MILLION GRAND CARAVANS SOLD.



GRAND CARAVAN CREW

POWERTRAIN

- 3.6L 283-horsepower Pentastar VVT V6
- 6-speed automatic transmission with Electronic Range Select

SELECT STANDARD EQUIPMENT OVER SXT

- 17-inch Tech Silver aluminum wheels
- Fog lamps
- Bright window trim belt molding
- Stow 'n Place roof rack with bright side roof rails
- Uconnect 430 with 6.5-inch touch screen, ParkView[®] Rear Back-Up Camera,⁽¹⁾ and CD/DVD/MP3 radio
- Interior LED ambient lighting
- Power 8-way driver's seat with 2-way power lumbar
- Leather-wrapped steering wheel with audio controls
- Leather-wrapped shift knob
- SiriusXM Satellite Radio⁽²⁾ with 1-year subscription
- Electronic Vehicle Information Center (EVIC)
- 3-zone Automatic Temperature Control (ATC)
- Rear overhead console
- Rear removable, rechargeable flashlight
- Security alarm
- Remote start
- Universal Garage Door Opener

SELECT OPTIONAL EQUIPMENT

- Safety Sphere Group
- Driver Convenience Group
- Entertainment Group #1 – Rear DVD with 2nd-row 9-inch screen
- Entertainment Group #4 – Rear DVD with 2nd-row 9-inch VGA screen (late availability)
- Entertainment Group #5 – Rear Blu-ray/DVD with 2nd- and 3rd-row 9-inch VGA screens
- Uconnect 430N with 6.5-inch touch screen, Garmin Navigation, and CD/DVD/MP3 radio
- Trailer Tow Group
- Infinity[®] 9 speakers with amplifier and 506-watt subwoofer
- Load-leveling suspension
- Removable center console
- Mopar Uconnect Web⁽³⁾
- Engine block heater



GRAND CARAVAN R/T

POWERTRAIN

- 3.6L 283-horsepower Pentastar VVT V6
- 6-speed automatic transmission with Electronic Range Select

SELECT STANDARD EQUIPMENT OVER CREW

- Unique premium leather-trimmed perforated seats with Red accent stitching
- All-Black interior including headliner and doors
- Unique Satin Silver instrument panel trim
- Unique monochromatic exterior appearance including body-color grille and door handles
- Unique 17-inch Satin Carbon aluminum wheels
- Unique performance-tuned suspension
- Infinity 9 speakers with amplifier and 506-watt subwoofer

SELECT OPTIONAL EQUIPMENT

- Safety Sphere Group
- Driver Convenience Group
- Entertainment Group #1 – Rear DVD with 9-inch screen
- Entertainment Group #4 – Rear DVD with 9-inch VGA screen (late availability)
- Entertainment Group #5 – Rear Blu-ray/DVD with 2nd- and 3rd-row 9-inch VGA screens
- Uconnect 730N with 6.5-inch touch screen, navigation, and CD/DVD/MP3 radio
- Trailer Tow Group
- Stow 'n Place roof rack with Black side roof rails
- Load-leveling suspension
- Mopar Uconnect Web⁽³⁾
- Engine block heater

PACKAGES

UCONNECT HANDS-FREE GROUP –

Leather-wrapped shift knob and steering wheel, auto-dimming rearview mirror with microphone, Uconnect Voice Command⁽¹²⁾ and SiriusXM Satellite Radio.⁽¹¹⁾

SE PLUS GROUP –

Body-color power heated mirrors, power front windows with driver's 1-touch up/down, power 2nd-row windows, power 3rd-row vents, and 17-inch Tech Silver aluminum wheels.

SECURITY GROUP –

Security alarm, remote start.

TRAILER TOW GROUP –

Trailer tow wiring harness, Class II hitch receiver, and load-leveling/height-control suspension.

DRIVER CONVENIENCE GROUP –

Heated steering wheel, 2nd- and 3rd-row window shades, heated 1st- and 2nd-row seats, auto-dimming rearview mirror with microphone, and Uconnect Voice Command.⁽¹²⁾

SAFETY SPHERE GROUP –

Rain-sensitive windshield wipers, automatic headlamps, ParkSense[®] Rear Park Assist,⁽⁸⁾ Blind Spot Monitoring (BSM),⁽⁹⁾ and Rear Cross-Path Detection System.⁽⁶⁾

ENTERTAINMENT GROUP #1 –

DVD Player, 2nd-row 9-inch video screen with overhead console, 2 wireless headphones, remote control, 115V auxiliary power outlet,* SiriusXM Satellite Radio,^{(11)*} Uconnect 430 6.5-inch touch screen,* ParkView[®] Rear Back-Up Camera.^{(8)*}

ENTERTAINMENT GROUP #4 –

DVD Player, 2nd-row 9-inch VGA video screen with overhead console, 2 wireless headphones, remote control, 115V auxiliary power outlet,* HDMI input, 2 remote USB charging ports, SiriusXM Satellite Radio,^{(11)*} Uconnect 430 6.5-inch touch screen,* ParkView Rear Back-Up Camera.^{(8)*}

ENTERTAINMENT GROUP #5 –

Blu-ray Player and DVD Player, 2nd- and 3rd-row 9-inch VGA screens with overhead console, 2 wireless headphones, remote control, 115V auxiliary power outlet,* HDMI input, 2 remote USB charging ports, SiriusXM Satellite Radio,^{(11)*} Uconnect 430 6.5-inch touch screen,* ParkView Rear Back-Up Camera.^{(8)*}

*Content included on SXT only as this equipment is standard on Crew and R/T.



DODGE.COM/LIFE

Check out an extensive line of gifts and gear for the Dodge enthusiast. From authentic apparel to die-cast replica cars for the collector, as well as electronics and office supplies, all lifestyle items are as bold as your Dodge vehicle. Refer to dodge.com/life for our full product lineup.

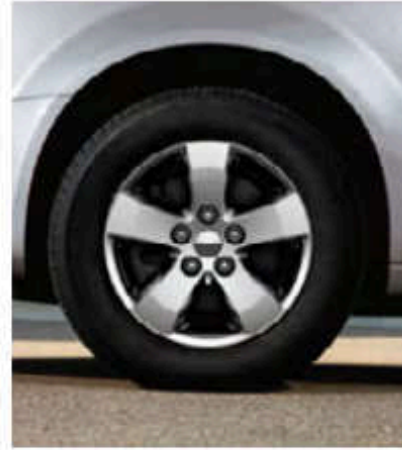
GRAND CARAVAN WHEELS



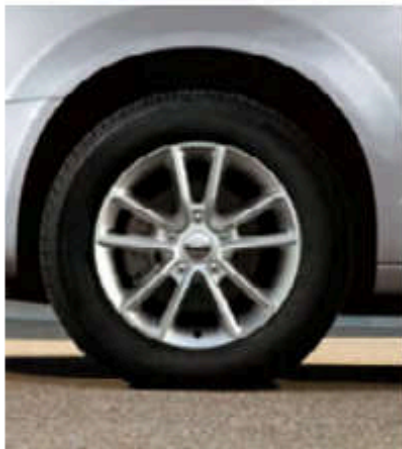
16-inch wheel cover
(standard on AVP and SE)



17-inch wheel cover
(standard on AVP and SE;
late availability)



17-inch aluminum
(optional on SE)



17-inch Tech Silver aluminum
(standard on SXT)



17-inch Tech Silver aluminum
(standard on Crew)

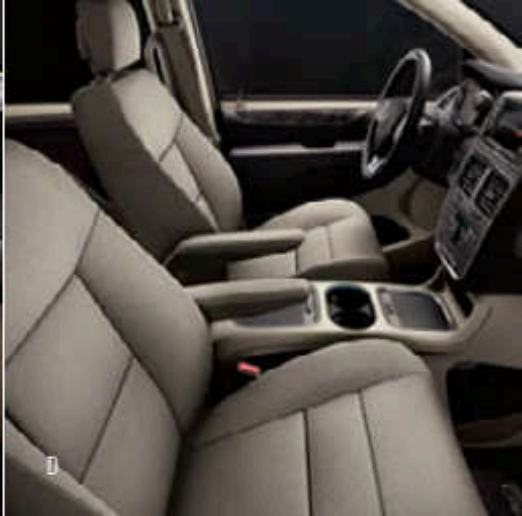
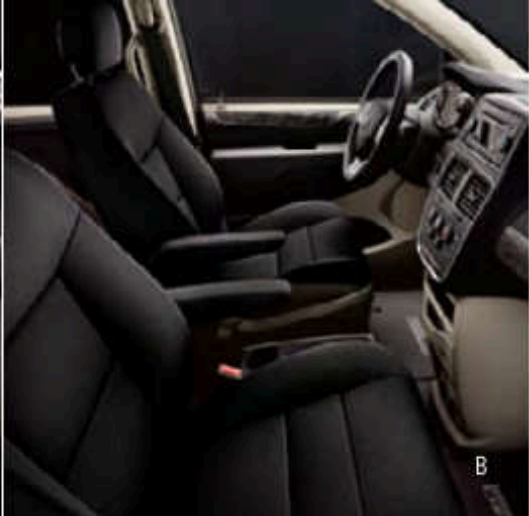


17-inch Satin Carbon aluminum
(standard on R/T)

GO MOBILE



TAKE A MULTIMEDIA TOUR OF YOUR VEHICLE ON YOUR MOBILE DEVICE. VISIT THE CHRYSLER GROUP LLC PAGE IN iTunes® FROM YOUR SMARTPHONE OR iPad® TO DOWNLOAD THE MOST UP-TO-DATE VEHICLE APPS. LOG ON TO THE DODGE.COM MOBILE SITE FOR AN AT-A-GLANCE REVIEW OF WHAT YOU NEED TO KNOW ABOUT YOUR DODGE VEHICLE. EXPERIENCE VISUAL AND INTERACTIVE DEMONSTRATIONS WHILE GAINING ACCESS TO PRODUCT INFORMATION AT YOUR FINGERTIPS, WHEREVER YOU GO.



GRAND CARAVAN INTERIORS

A Light Graystone cloth
(standard on AVP and SE)

B Black cloth
(standard on AVP and SE)

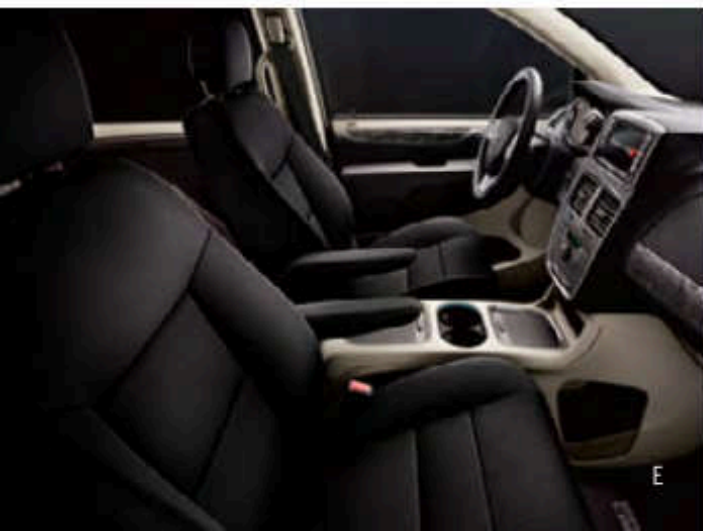
C Sandstorm cloth
(standard on AVP and SE)

D Light Graystone cloth
(standard on SXT and Crew)

E Black cloth
(standard on SXT and Crew)

F Sandstorm cloth
(standard on SXT and Crew)

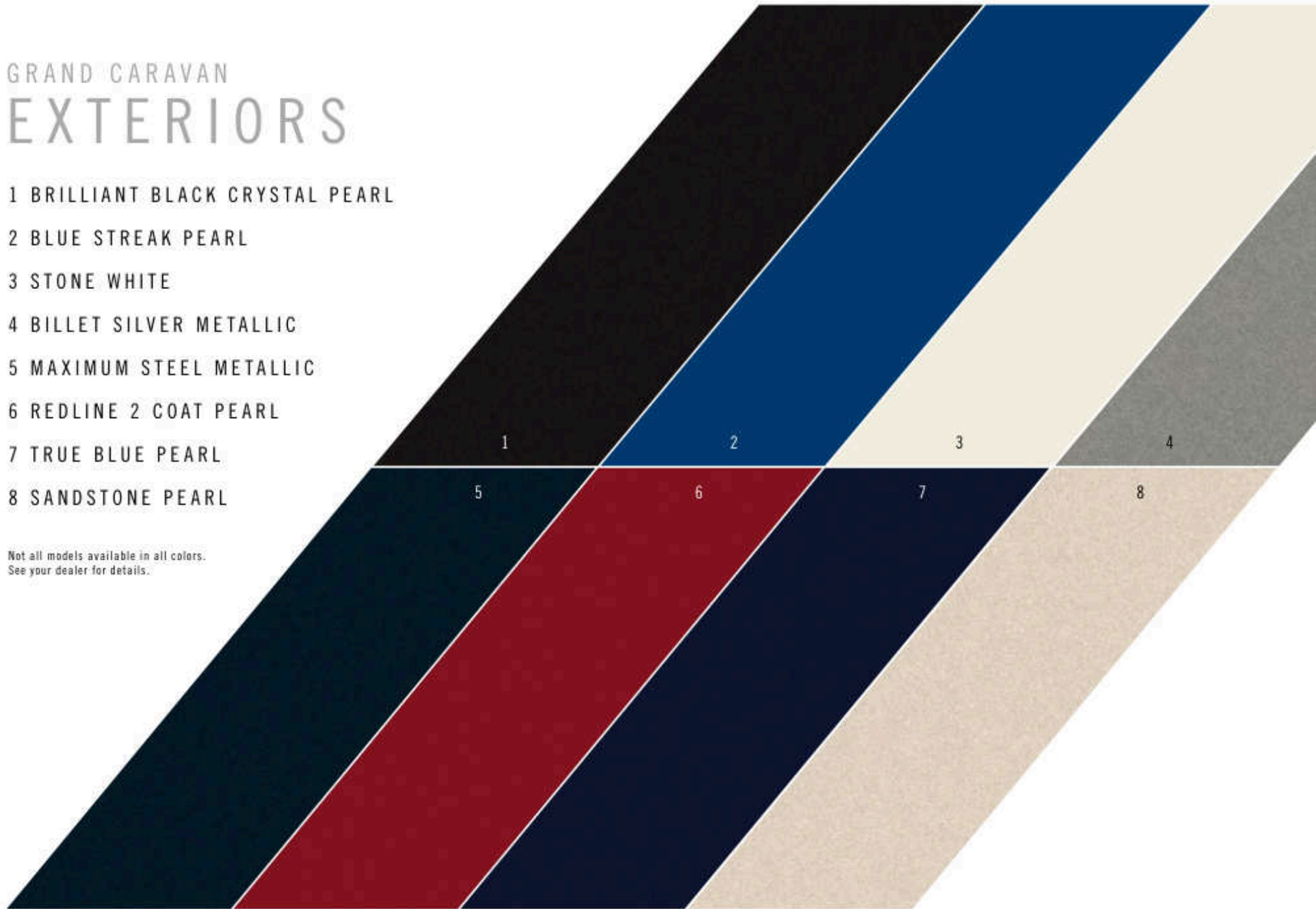
G Premium Black perforated leather-
trim with Red accent stitching
(standard on R/T)



GRAND CARAVAN EXTERIORS

- 1 BRILLIANT BLACK CRYSTAL PEARL
- 2 BLUE STREAK PEARL
- 3 STONE WHITE
- 4 BILLET SILVER METALLIC
- 5 MAXIMUM STEEL METALLIC
- 6 REDLINE 2 COAT PEARL
- 7 TRUE BLUE PEARL
- 8 SANDSTONE PEARL

Not all models available in all colors.
See your dealer for details.





TAILGATE SEAT SHOULD NOT BE USED WHEN VEHICLE IS IN MOTION.
ALWAYS WEAR YOUR SEAT BELT.

1991 - FIRST MINIVAN TO OFFER CHILD SAFETY LOCKS ON SLIDING DOOR AND STANDARD DRIVER'S SIDE AIR BAG.



// [DODGE.COM/GRANDCARAVAN](https://www.dodge.com/grandcaravan)



CHALLENGER



CHARGER



DART



AVENGER



GRAND CARAVAN



DURANGO



JOURNEY



DODGE.COM // 800-4ADODGE

DODGE IS A REGISTERED TRADEMARK OF CHRYSLER GROUP LLC.



Join our community on Facebook, follow us on Twitter, and check us out on YouTube.

[1] Based on total sales 1984-2012. July 2012. [2] Based on automotive awards for minivans 1984-2012. [3] Based on the latest available competitive information and Ward's Small Van segment. Excludes other vehicles built by Chrysler Group LLC. [4] Based on the latest available competitive information of 7-passenger vehicles. [5] Transferable. See your dealer for complete details and a copy of the 5-Year/100,000-Mile Powertrain Limited Warranty. [6] No system, no matter how sophisticated, can repeal the laws of physics or overcome careless driving actions. Performance is limited by available traction, which snow, ice, and other conditions can affect. When the ESC warning lamp flashes, the driver needs to use less throttle and adapt speed and driving behavior to prevailing road conditions. Always drive carefully, consistent with conditions. Always wear your seat belt. [7] The Advanced Front Air Bags in this vehicle are certified to the new U.S. federal regulations for advanced air bags. Children 12 years old and younger should always ride buckled up in a rear seat. Infants in rear-facing child restraints should never ride in the front seat of a vehicle with a passenger front air bag. All occupants should always wear their lap and shoulder belts properly. [8] Always check entire surroundings before backing up. [9] Always check visually for vehicles prior to changing lanes. [10] Always sit properly with the head restraint properly adjusted. Never place anything in front of the head restraint. [11] Sirius services require subscriptions, sold separately after the 12-month trial included with the new vehicle purchase. If you decide to continue your service at the end of your trial subscription, the plan you choose will automatically renew and bill at their current rates until you call SiriusXM at 1-800-625-2349 to cancel. See SiriusXM Customer Agreement for complete terms at siriusxm.com. All fees and programming subject to change. Sirius satellite service is available only to those at least 18 and older in the 48 contiguous U.S., D.C., and P.R. (with coverage limitations). Our Internet radio service is available throughout our satellite service area and in AK and HI. Traffic information not available in all markets. See siriusxm.com/traffic for details. © 2012 Sirius XM Radio Inc. Sirius, XM and all related marks and logos are trademarks of Sirius XM Radio Inc. [12] Requires Uconnect Phone. [13] Sold separately. Subscription required. Uconnect Web feature is not intended for use by the driver while the vehicle is in motion. Always drive carefully. [14] Detects most obstacles. As with all electronically controlled systems, care is advised. About this eBrochure: Since the time of publication, some of the information you'll find in this eBrochure may have been updated. Ask your dealer for details. Some of the equipment shown or described throughout this eBrochure may be available at extra cost. Specifications, descriptions, illustrative materials, and all competitive comparisons contained herein are as accurate as known at the time this eBrochure was approved for publication. Chrysler Group LLC reserves the right to discontinue models at any time or change specifications without notice or without incurring obligation. Options may be required in combination with other options. For the price of the model with the equipment you desire, or verification of specifications contained here, see your Dodge dealer. Michelin is a registered trademark of Michelin North America, Inc. iPad, iPad, and iTunes are registered trademarks of Apple Inc. All rights reserved. Sirius, XM and all related marks and logos are trademarks of Sirius XM Radio Inc. Bluetooth is a registered trademark of Bluetooth SIG, Inc. Garmin and the Garmin logo are registered trademarks of Garmin, Ltd. or its subsidiaries and are registered in one or more countries, including the U.S. Infinity is a registered trademark of Harman International Industries, Inc. Xbox 360 is a registered trademark of Microsoft. Blu-ray is a trademark of Blu-ray Disc Association. Facebook and logo are registered trademarks of Facebook, Inc. The Twitter logo is a service mark of Twitter, Inc. The YouTube logo is a trademark of Google Inc. The Best Buy Seal and other licensed materials are registered certification marks and trademarks of Consumers Digest Communications, LLC, used under license. For award information, visit ConsumersDigest.com. Chrysler, Dodge, Caravan, Avenger, Challenger, Charger, Dart, Durango, Journey, Mopar, ParkSense, ParkView, Pentastar, Super Bee, R/T, Slow 'n Go, SXT, Grand Caravan, Grand Caravan Crew, Stow 'n Place, and Uconnect are registered trademarks of Chrysler Group LLC. ©2012 Chrysler Group LLC. All rights reserved.