



2018 DODGE /// GRAND CARAVAN



DOMESTIC. NOT DOMESTICATED.

DODGE

For more than 100 years, the Dodge Brand has stood for standing out. We've led by being different. By offering the unexpected, by having a different voice altogether and daring to amplify it. We've stood apart in a sea of look-alike vehicles by championing the un-boring, by having the courage to be different enough to build modern-day marvels that are engineered with more passion,

precision and performance than ever before. Each vehicle in the 2018 Dodge lineup pays homage to its iconic bloodline with award-winning features and detailed craftsmanship. The snarling engines and sleek exteriors of each vehicle beg to be taken out on the open road. It's time to put the pedal to the metal. *THIS IS WHAT IT MEANS TO BE DOMESTIC AND NOT DOMESTICATED.*

THE ULTIMATE GRAND OPENING



2018 DODGE GRAND CARAVAN

It's hard to remember what life was like before satellites bounced 150 channels into our homes, meals could be cooked within minutes and the World Wide Web could be accessed from the palm of our hand. It's also hard to remember what life was like before Dodge created the first minivan more than 30 years ago. But once built, families flocked. Weekend warriors arrived. Small business owners lined up. Today, Grand Caravan powers forward by offering drivers unlimited versatility and more than 55 standard and available safety, security and technology features. It holds a bounty of premium features and the latest technology. But most importantly, it holds the confidence of families, their hobbies and their livelihoods. In our opinion, nothing tops this original.

////// Grand Caravan SXT Blacktop shown in Billet.



Properly secure all cargo.

CONTINUED ON THE NEXT PAGE.

STOW 'N GO[®]: THE SURPRISE INSIDE

When you think minivan, you think flexible seating, tons of storage, cup holders that accommodate juice boxes and available dual power sliding side doors. But superior craftsmanship, comfort and luxury? Well that's Grand Caravan putting the cherry on top of your people-hauling sundae.

1 /// Third-row Stow 'n Go floor storage

2 /// Available second-row Captain's Chairs

3 /// Available premium Super Console

4 /// Grand Caravan SE shown with Light Graystone cloth interior with optional equipment

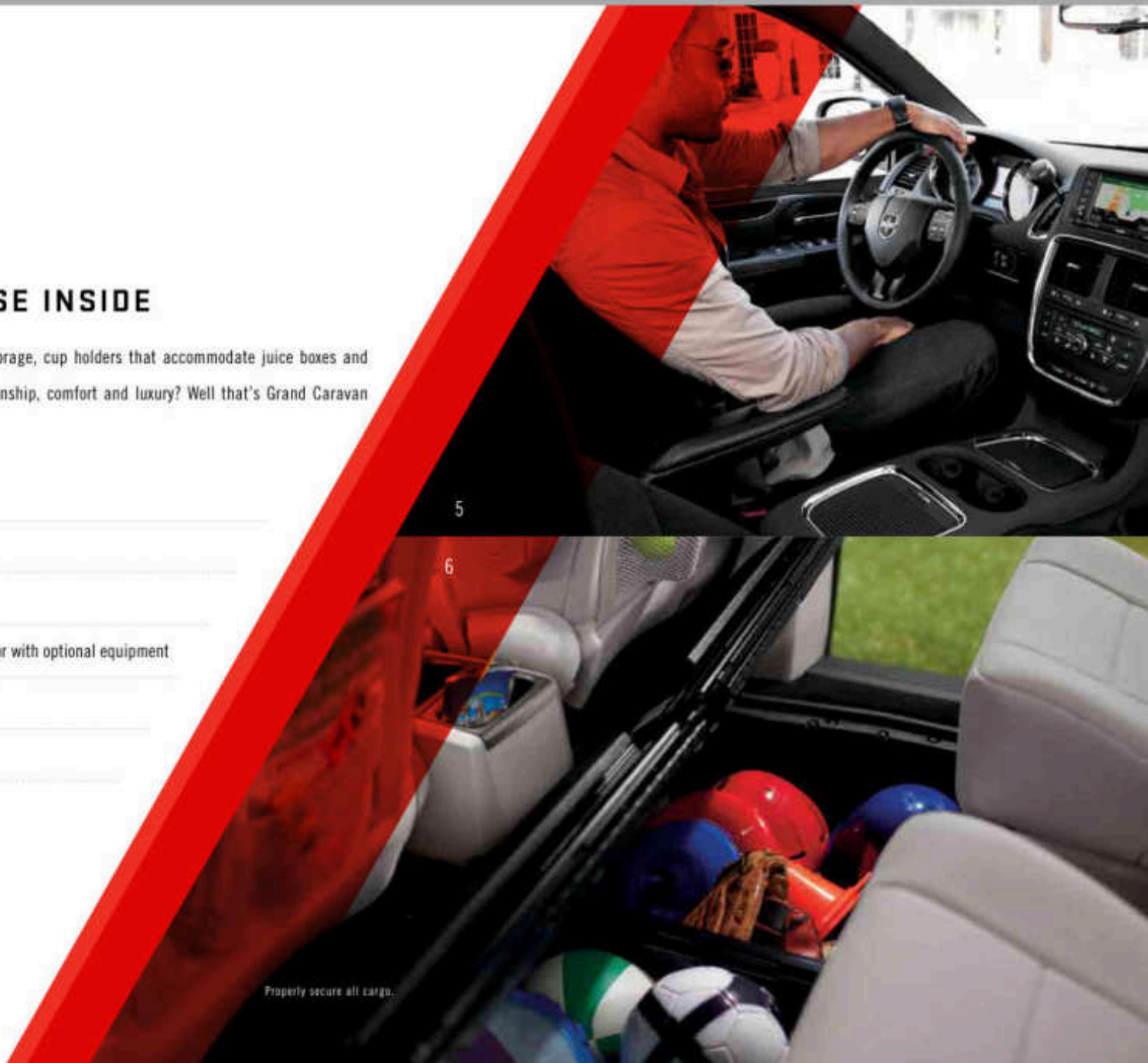
5 /// Grand Caravan SXT shown with optional equipment

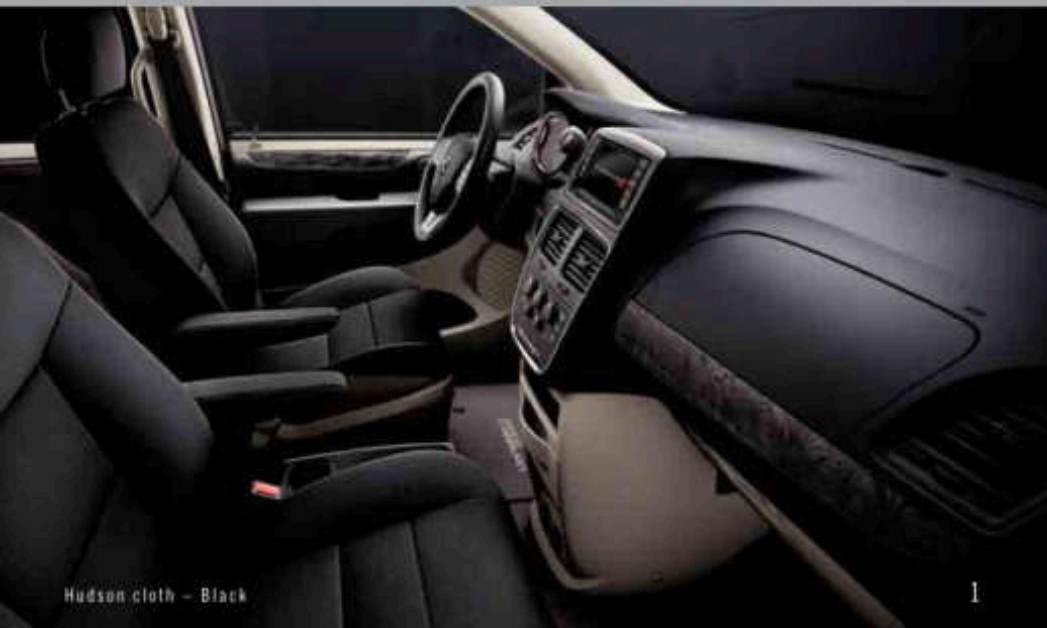
6 /// Available second-row Super Stow 'n Go in-floor storage

5

6

Properly secure all cargo.





Hudson cloth - Black

1

Light Graystone



Hudson cloth - Light Graystone

2



Torino leather trim - Black

3

Light Graystone



Torino leather trim - Black

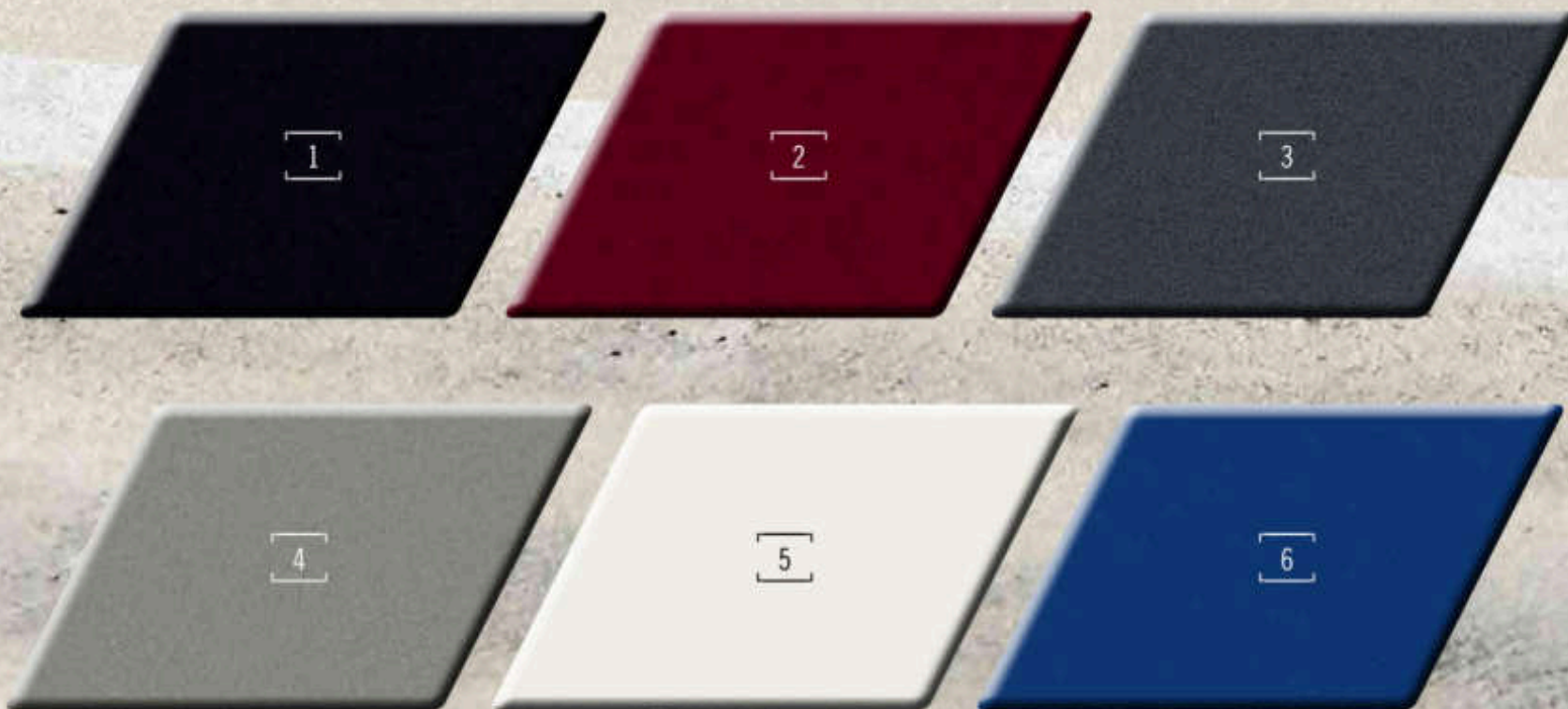
4

INTERIOR INFORMATION ON THE NEXT PAGE.



INTERIOR / CHOICES

- 1 /// Hudson cloth in Black (also available in Light Graystone) — standard on SE, SE Plus; SE Plus includes Silver accent stitching
- 2 /// Hudson cloth in Light Graystone — standard on SE
- 3 /// Torino leather trim in Black with Axis perforated suede inserts and Silver accent stitching (also available in Light Graystone) — standard on SXT; included with Blacktop Package on SXT
- 4 /// Torino leather trim in Black with Axis perforations and Red accent stitching — standard on GT



COLOR:CHOICES

1 Black Onyx 2 Octane Red 3 Granite 4 Billet 5 White Knuckle 6 Indigo Blue

WHEEL:CHOICES

1 17-inch Wheel Cover (standard on SE) 2 17-inch Aluminum painted Tech Silver (standard on SXT) 3 17-inch Polished Aluminum with Gloss Black pockets (standard on SE Plus and GT; included with Blacktop Package on SXT)



Uconnect™

HERE'S WHAT YOU CAN DO.

REMAIN FOCUSED ON THE ROAD WITH YOUR HANDS ON THE WHEEL, WHILE YOU COMMUNICATE, NAVIGATE AND STAY ENTERTAINED.

/// **LISTEN** to music, talk shows and sports. Access all genres, favorite artists, winning teams — all the time with SiriusXM® Satellite Radio™ /// **DISCOVER** new places, find the best shopping, dancing, entertainment venues and restaurants /// **SPEAK UP** and be heard, send and receive calls and textsSM while driving safely with hands-free phone capabilitySM /// **NAVIGATE** to every adventure, get turn-by-turn directions so you don't get lost on the way (unless you want to) /// **START** your car from afar, get your engine running, unlock your door or flash your headlamps from almost anywhere using your smartphone /// **SEE** into the future, hear weather and traffic reports* with a five-year trial subscription to SiriusXM Travel LinkSM and SiriusXM TrafficSM

*Additional charges may apply.

†All disclosures and disclaimers can be found on page 17.





Uconnect

SiriusXM
SATELLITE RADIO

FIND OUT MORE AT DRIVEDCONNECT.COM

SAFETY & SECURITY FEATURES

PARKSENSE® REAR PARK ASSIST^[9] //// When your vehicle is in Reverse, this system can sense objects moving at low speeds; if imminent collision is detected, the system will provide a momentary, autonomous brake pulse. In certain circumstances, this system can help bring your vehicle to a stop. (Available on Durango.) For Journey and Grand Caravan, this available system detects objects within 6.5 feet of the backup pathway and provides both an audible chime and visual warning.

RAIN BRAKE SUPPORT //// When your windshield wipers have been activated, the system pulses the brake pads closer to the spinning rotors, helping to keep the rotors and pads dry for greater control and operator security. Standard on Durango.

BLIND SPOT MONITORING (BSM)^[10] WITH REAR CROSS-PATH DETECTION^[9] //// Radar continually monitors rear vehicle blind zones and will visually and audibly alert you when a vehicle is sensed in any of the zones. When the vehicle is in Reverse, rear sensors warn through a chime if cross-traffic approaches the vehicle. Available on Durango and Grand Caravan.

ADAPTIVE CRUISE CONTROL (ACC)^[11] WITH STOP //// Helps maintain driver-selected distance from the vehicle ahead; under certain traffic conditions, the system can bring the vehicle to a full stop without driver intervention. Available on Durango.

FORWARD COLLISION WARNING (FCW)^[12] WITH ACTIVE BRAKING //// Forward-facing radar sensors detect when your vehicle may be approaching another object too rapidly and the system alerts the driver with both an audible chime and a visual warning. Available on Durango.

PARKVIEW® REAR BACK-UP CAMERA^[9] //// This system displays an accurate visual reference of what is behind your vehicle when it's in Reverse. Standard on Durango and Grand Caravan. Available on Journey.

READY ALERT BRAKING (RAB) //// The system anticipates situations when you may initiate an emergency brake stop and uses the Electronic Stability Control (ESC)^[13] pump to precharge the brake system in order to decrease the time required for full brake application. Standard on Durango.

ELECTRONIC STABILITY CONTROL (ESC)^[13] //// This system is designed to assist you in maintaining control of your vehicle during extreme steering maneuvers. ESC^[13] senses when a vehicle is starting to spin (oversteer) or plow (understeer), and attempts to correct the vehicle's course by automatically controlling the throttle and applying the brakes at individual wheels. Standard on Durango, Journey and Grand Caravan.

ALL-WHEEL DRIVE (AWD) //// A system that automatically detects wheel-slip and sends additional power to the wheel(s) with the most traction. Available on Durango and Journey.

ANTILOCK BRAKE SYSTEM (ABS) //// Standard four-wheel antilock disc brakes sense and prevent wheel lockup, offering improved steering control under extreme braking and/or slippery conditions. Standard on Durango, Journey and Grand Caravan.



/// BUYER'S GUIDE – GRAND CARAVAN

	SE	SE PLUS	SXT	GT
ENGINE AND TRANSMISSION				
3.6L Pentastar® Flex Fuel DOHC Variable Valve Timing (VVT) with V6/6-speed Automatic with AutoStick	•	•	•	•
MECHANICAL FEATURES				
ALTERNATOR — 160-amp	•	•	•	•
BATTERY — 730-amp, maintenance-free	•	•	•	•
BRAKES — 4-wheel antilock with heavy-duty discs	•	•	•	•
DEFROSTER — Rear	•	•	•	•
ENGINE BLOCK HEATER	0	0	0	0
FUEL OPTIMIZER CALIBRATION	•	•	•	•
FUEL TANK — 20-gallon	•	•	•	•
HEAVY-DUTY ENGINE COOLING	•	•	•	•
REMOTE START SYSTEM		•	•	•
SPEED CONTROL	•	•	•	•
SUSPENSION — Load-leveling and height control (included with Trailer Tow Group on GT)				P
— Performance-tuned				•
— Touring-tuned	•	•	•	•
TIP START — Quiet start; prevents double starts	•	•	•	•
EXTERIOR FEATURES				
BELT MOLDING — Black	•	•		•
— Bright (not available with Blacktop Package)			•	
DOOR HANDLES — Body-color	•	•	•	•
DOORS — Manual sliding	•	•		
— Power sliding			•	•
FASCIAS — Body-color	•	•	•	•
FOG LAMPS		•	•	•
GLASS — Sunscreen	•	•	•	•
GRILLE — Black/Bright	•		•	
— Body-color				•
— Gloss Black (included with Blacktop Package)		•	P	
HEADLAMPS — Automatic		•	•	•
— Black bezels (included with Blacktop Package)		•	P	•
— Daytime running lamps (DRLs)	•	•	•	•
— Quad halogen	•	•	•	•
LIFTGATE — Power			•	•
MIRRORS — Foldaway, power, heated with Black exterior	•			
— Foldaway, power, heated with body-color exterior		•	•	•
EXTERIOR FEATURES (continued)				
ROOF RACK — Stow 'n Place® Black (requires Blacktop Package on SXT)	0	0	P	0
— Stow 'n Place, Bright			•	

	SE	SE PLUS	SXT	GT
TIRE INFLATOR KIT	•	•	•	
TIRES — 225/65R17 BSW All-Season Touring	•	•	0	
— P225/65R17 BSW All-Season	0	0	0	•
— P225/65R17 BSW Touring	0	0	•	0
— Spare, compact	0	0	0	0
WINDSHIELD WIPERS — Front, variable/intermittent	•	•	•	•
— Rear wiper/washer	•	•	•	•
INTERIOR FEATURES				
AIR CONDITIONING — 3-Zone Automatic Temperature Control (ATC) (included with Driver's Convenience Group)			P	•
— 3-Zone manual temperature control	•	•	•	
AIR FILTRATION	•	•	•	•
ASSIST HANDLES — Front-row passenger mounted on A-pillar, 2 nd -row passengers mounted over sliding doors and on B-pillars	•	•	•	•
DOOR LOCKS — Power	•	•	•	•
FLOOR MATS — Easy-clean	•	•	•	•
FLOOR SILENCER — Rear	•	•	•	•
GROCERY BAG HOOKS — On 3 rd -row seatbacks and back of driver's seat	•	•	•	•
LIGHTING — Door, courtesy	•	•	•	•
— Front courtesy lamp, rear dome lamp	•	•	•	
— Illuminated front door storage (included with Driver's Convenience Group)			P	•
— Liftgate, single floodlamp	•	•	•	•
— Overhead, ambient surround (included with Driver's Convenience Group)			P	•
— Rear swiveling overhead reading/courtesy lamps (included with Driver's Convenience Group)			P	•
MIRRORS — Auto-dimming rearview mirror with integrated microphone (included with Uconnect® Hands-Free Group, Single-DVD Entertainment Group, Uconnect Voice Command SM)	P	P	P	P
— Driver and front passenger's visor vanity	•	•	•	
— Illuminated visor vanity (included with Driver's Convenience Group)			P	•
POWER OUTLETS — 12-volt DC located in instrument panel and rear quarter trim panel	•	•	•	•
— Auxiliary, 12-volt in instrument panel	•	•	•	•
— Auxiliary, 115-volt inverter in front of driver's-side quarter trim panel; includes 2 USB ports and an HDMI port (included with single-DVD player)	P	P	P	•
REMOTE KEYLESS/ILLUMINATED ENTRY SYSTEM — Includes 2 transmitters, Sentry Key® anti-theft engine immobilizer and headlamps-off time delay	•	•	•	•
SHADES — 2 nd -row retractable (included with Driver's Convenience Group)			0/P	•

• = Included. 0 = Optional. P = Available within Package noted.

INTERIOR FEATURES (continued)

	SE	SE PLUS	SXT	GT
SHIFT KNOB — Leather-wrapped (included with Uconnect® Hands-Free Group or Blacktop Package)	P	•	•	•
— Urethane	•			
STEERING COLUMN — Tilt/telescoping	•	•	•	•
STEERING WHEEL — Heated (included with Driver's Convenience Group)			P	•
— Leather-wrapped (included with Uconnect Hands-Free Group or Blacktop Package)	P	•	•	•
— Luxury	•			
— Mounted audio controls	P	•	•	•
STORAGE — Console, floor-mounted with 4 cup holders		•		
— Driver's door sill bin and left rear quarter trim bin	•	•	•	
— Glove box, dual (lower is lockable)	•	•	•	•
— Open bin in lower instrument panel	•	•	•	•
— Super Console			•	•
TRIP COMPUTER — Electronic Vehicle Information Center (EVIC) with display in instrument cluster, controls mounted on steering wheel				•
UNIVERSAL GARAGE DOOR OPENER ⁽¹⁾ — Programmable, 3-function (included with Driver's Convenience Group)			P	•
WINDOWS — Front, power with driver's 1-touch up/down, power 2 nd -row and power 3 rd -row quarter vents	•	•	•	•
SEATING AND TRIM				
SEATS — 2 nd -row bench with 3 rd -row Stow 'n Go® 60/40 bench seat that folds in floor	•	•		
— 2 nd -row Super Stow 'n Go bucket seats that fold in floor and include a 2 nd -row in-floor storage bin	0	0	•	•
— 8-way power driver's seat		0	•	•
— 8-way power driver's and front-passenger seat				•
— Driver's 2-way power lumbar support (included with power driver's and front-passenger seat)		P	•	•
— Heated front seats (included with Driver's Convenience Group)			P	•
— Reactive front head restraints ⁽¹⁾	•	•	•	•
UCONNECT®/MULTIMEDIA				
RADIO 430 — CD/DVD/MP3/HDD radio with 6.5-inch touchscreen, 28GB hard drive (approximately 6,700-song capacity), Gracenote MusicID® and audio jack input	•	•	•	
RADIO 430N — CD/DVD/MP3/HDD radio with 6.5-inch touchscreen, Garmin® Navigation, 28GB hard drive (approximately 6,700-song capacity), Gracenote MusicID and audio jack input		0	0	•
SIRIUSXM® SATELLITE RADIO ⁽²⁾ — Includes 1-year trial subscription (available only in continental United States; included with Uconnect Hands-Free Group, Single-DVD Entertainment Group or Uconnect 430N radio)	P	•	•	•
SOUND SYSTEMS — 6 speakers	•	•	•	
— 9 amplified speakers with subwoofer powered by a 506-watt amplifier				•
UCONNECT VOICE COMMAND ⁽¹⁾ — Hands-free communication system includes auto-dimming rearview mirror with microphone and iPod® connection in glove compartment (included with Uconnect Hands-Free Group or Driver's Convenience Group)	P	•	•	•

SAFETY & SECURITY

	SE	SE PLUS	SXT	GT
AIR BAGS ⁽¹⁾ — Advanced multistage driver and front-passenger ⁽¹⁾⁽⁴⁾ includes low-risk deployment	•	•	•	•
— Driver's-side inflatable knee blocker ⁽¹⁾⁽⁴⁾	•	•	•	•
— Front seat-mounted side ⁽¹⁾⁽⁴⁾	•	•	•	•
— Side-curtain, for outboard passengers in all 3 rows ⁽¹⁾⁽⁴⁾	•	•	•	•
BLIND SPOT MONITORING (BSM) ⁽¹⁾⁽⁴⁾ WITH REAR CROSS-PATH DETECTION ⁽¹⁾⁽⁴⁾ — Included with Safety Sphere Group				P
CHILD SEAT ANCHOR SYSTEM (LATCH) — Mounts for 2 child seats in 2 nd row help ease installation of compatible aftermarket child seats	•	•	•	•
ELECTRONIC STABILITY CONTROL (ESC) ⁽¹⁾⁽⁴⁾ SYSTEM — Includes Brake Assist and All-Speed Traction Control	•	•	•	•
PARKSENSE® REAR PARK ASSIST ⁽¹⁾⁽⁴⁾ SYSTEM — Assists while parking (included with Safety Sphere Group)				P
PARKVIEW® REAR BACK-UP CAMERA ⁽¹⁾ — Included with Uconnect 430 and 430N	•	•	•	•
SECURITY ALARM		•	•	•
TIRE PRESSURE MONITORING SYSTEM — Warning lamp	•	•	•	•
TRAILER SWAY CONTROL ⁽¹⁾	•	•	•	•
PACKAGES/EQUIPMENT GROUPS				
BLACKTOP PACKAGE — Includes leather-wrapped shift knob, Delete Roof Rack (SXT only), Black interior accents, fog lamps (SXT only), Black headlamp bezels, rear fascia scuff pad, Black grille, leather-wrapped steering wheel and 17-inch aluminum wheels		•	0	
DRIVER'S CONVENIENCE GROUP — Includes single rear overhead console, overhead storage bin; sun visors with illuminated vanity mirrors; 3-Zone Auto Climate Control, Universal Garage Door Opener, ⁽¹⁾⁽⁴⁾ heated steering wheel, 2 nd -row window shades; heated front seats; overhead ambient lighting; rear swiveling reading lamp; illuminated front door storage; Uconnect Voice Command ⁽¹⁾ (GT)			0	•
SAFETY SPHERE GROUP — Includes ParkSense Rear Park Assist System, ⁽¹⁾ BSM ⁽¹⁾⁽⁴⁾ and Rear Cross-Path Detection ⁽¹⁾⁽⁴⁾ System				0
SINGLE-DVD ENTERTAINMENT GROUP — Includes 2 nd -row overhead DVD player, 115-volt auxiliary power outlet, video remote control, 2 wireless headphones, remote USB port, 2 nd -row overhead 9-inch screen, SiriusXM Satellite Radio ⁽¹⁾ (SE and SXT only)	0	0	0	0
TRAILER TOW GROUP — Includes trailer tow wiring harness, Class II hitch receiver and load-leveling/height-control suspension				0
UCONNECT HANDS-FREE GROUP — Includes leather-wrapped shift knob, rearview auto-dimming mirror with integrated microphone, steering wheel-mounted audio controls, Uconnect Voice Command ⁽¹⁾ , SiriusXM Satellite Radio ⁽¹⁾ and leather-wrapped steering wheel	0	•	•	•

• = Included, 0 = Optional, P = Available within Package noted.

DODGE.COM/LIFE

DODGE GOODS

Check out an extensive line of gifts and accessories for the Dodge enthusiast. From authentic apparel to die-cast replica cars for the collector, as well as electronics and office supplies, all lifestyle items are as bold as your Dodge vehicle. Refer to dodge.com/life for our full product lineup.



Properly secure all cargo.

MOPAR ACCESSORIES ///

- Roof-Mount Ski & Snowboard Carrier
- Molded Cargo Tray
- Hitch Receiver*

*Check User Guide for hitch type, load capacity and heavy-duty equipment required. Do not exceed rated tow capacity of the vehicle as equipped. Trailer may require items not supplied by Mopar.

PERFORMANCE YOU CAN'T PASS UP. Consider this: if Mopar can help your car endure the intensity of the racetrack, just imagine what Mopar can do for your daily commute. From factory-backed parts that boost performance to accessories that add more attitude to travel systems that let you take your active lifestyle to the next level to premium audio packages, the Mopar lineup has it all. Floor it over to your closest Dodge dealership to see the full line of offerings or hit up mopar.com

Dodge Grand Caravan SE shown with Authentic Dodge Accessories by Mopar: Removable Roof Rack Kit, Roof Top Cargo Box, Front Air Deflector, Fog Lights and Molded Running Boards.

[1] Apple CarPlay and Android Auto require a compatible mobile device connected via USB cable to the Uconnect system. Data plan rates may apply. Visit UconnectPhone.com for system and device compatibility. [2] Siri Eyes Free requires an iPhone equipped with Siri. Certain trailers are not available while the vehicle is in motion. iPhone must be within active cellular range. Customer's existing iPhone data rates apply to Internet-supported features. [3] This system is not meant to be used while the car is in motion. [4] Requires a mobile phone equipped with the Bluetooth Hands-Free Profile. Visit UconnectPhone.com for system and device compatibility. [5] No system, no matter how sophisticated, can repeat the laws of physics or substitute careful driving actions. Performance is limited by available traction, which snow, ice and other conditions can affect. When the ESC warning lamp flashes, the driver needs to use less throttle and adapt speed and driving behavior to prevailing road conditions. Always drive carefully, consistent with conditions. Always wear your seat belt. [6] For children 48 - 85 lb and up to 4'9". [7] SiriusXM subscriptions for audio and data services are sold by SiriusXM to follow your trial subscription. If you decide to continue listening after your trial, the subscription plan you choose will automatically renew thereafter and you will be charged according to your chosen payment method at then-current rates. Fees and taxes apply. To cancel, you must call SiriusXM at 1-866-635-2349. See the SiriusXM Customer Agreement for complete terms and more information at www.siriusxm.com. All fees and programming subject to change. Your equipment and features for SiriusXM services will vary depending upon the vehicle you select and may be limited in select markets. [8] Voice Text Reply and Voice Texting features require a compatible mobile device enabled with Bluetooth Message Access Profile (MAP). iPhone and some other smartphones do not currently support Bluetooth MAP. Visit UconnectPhone.com for system and device compatibility. Issue MAP is ON and incoming message notification is enabled. Vehicle must be registered for Uconnect Access and you must fulfill minimum subscription requirements. Also requires the use of a compatible smartphone that supports text messaging and Bluetooth. Visit UconnectPhone.com for system and device compatibility. [9] Always look before proceeding, electronic drive aid is not a substitute for conscientious driving, always be aware of your surroundings. [10] Always check visually for vehicles prior to changing lanes. [11] ACC is a driver convenience system, not a substitute for active driver involvement. The driver must remain aware of traffic conditions and be prepared to use the brakes to avoid collisions. [12] FCW system is solely an alert system for the front of the vehicle which does not take any actions to change the vehicle dynamics to avoid a collision and is not a substitute for active driver involvement. The driver must remain aware of traffic conditions and be prepared to use the brakes to avoid collisions. [13] Always sit properly with the head restraint properly adjusted. Never place anything in front of the head restraints. [14] The Advanced Front Air Bags in this vehicle are certified to the new U.S. Federal regulations for Advanced Air Bags. Children 12 years old and younger should always ride buckled up in a rear seat. Infants in rear-facing child restraints should never ride in the front seat of a vehicle with a passenger front air bag. All occupants should always wear their lap and shoulder belts properly. [15] LSW is a driver convenience system, not a substitute for active driver involvement. The driver must remain aware of traffic conditions and be prepared to use brakes to avoid collisions. [16] May not work with all garage door openers. [17] Transferable. See dealer for complete details and a copy of the 5-Year/50,000-Mile Powertrain Limited Warranty.

©2017 FCA US LLC. All Rights Reserved. Dodge, Charger, Challenger, Durango, Grand Caravan, Journey, Blacktop, Citadel, the crossbar grille, Crossroad, R/T, SRT, GT, HEMI, Mopar, LaneSense, ParkSense, ParkView, Pentastar, Senny Key, Show 'n Go, Show 'n Place, Tigershark and Uconnect are registered trademarks, and Keyless-Enter 'n Go is a trademark of FCA US LLC.

MultiAir is a registered trademark of C.R.F. Società Cooperativa per Azioni, used under license by FCA US LLC. Alpine is a registered trademark of Alpine Electronics, Inc. BeatsAudio and Dr. Dre are trademarks of Beats Electronics, LLC. Bluetooth is a registered trademark of Bluetooth SIG, Inc. Blu-ray is a trademark of Blu-ray Disc Association. Breville is a registered trademark of C.R.F. Società Cooperativa per Azioni. Graceland Music is a registered trademark of Graceland Music, Inc. iPad, iPhone and Siri are registered trademarks, and Apple CarPlay is a trademark of Apple Inc. Instagram and logo are registered trademarks of Instagram, Inc. Garmin and the Garmin logo are registered trademarks of Garmin, Ltd. or its subsidiaries and are registered in one or more countries, including the U.S. Pinterest and logo are registered trademarks of Pinterest, Inc. Sirius, XM and all related marks and logos are trademarks of SiriusXM Radio Inc. and its subsidiaries. Facebook and logo are registered trademarks of Facebook, Inc. Michelin is a registered trademark of Michelin North America, Inc. The Twitter logo is a service mark of Twitter, Inc. Google, Google Play, Google+, Android, Android Auto, YouTube and other marks are trademarks of Google Inc.

About this catalog, since the time of printing, some of the information you'll find in this catalog may have been updated. Ask your dealer for details. Some of the equipment shown or described throughout this catalog may be available at extra cost. Specifications, descriptions, illustrative materials and all competitive comparisons contained herein are as accurate as known at the time this publication was approved for printing. FCA US LLC reserves the right to discontinue models at any time or change specifications without notice or without incurring obligation. Some options may be required in combination with other options. For the price of the model with the equipment you desire, or verification of specifications contained here, see your Dodge dealer.

