

09

DODGE JOURNEY



**WITH ITS SMART FOUR-CYLINDER ENGINE,  
IT DELIVERS BEST-IN-CLASS<sup>[1]</sup> FUEL ECONOMY.  
WITH ITS BEST-IN-CLASS<sup>[1]</sup> STORAGE SYSTEM,  
IT DELIVERS EVERYTHING ELSE. THIS IS THE  
ALL-NEW DODGE JOURNEY. IF YOU CAN  
DREAM IT, DO IT.**

★★★★★ HIGHEST GOVERNMENT  
FIVE-STAR FRONTAL CRASH TEST RATING



The all-new 2009 Dodge Journey crossover jets onto the scene with a toned and chiseled profile and signature Dodge crosshair grille. Whether it be the standard 2.4-liter I-4 World Engine with dual Variable Valve Timing (VVT) and best-in-class<sup>1</sup> fuel economy (19 city/25 hwy) or the available 3.5-liter High Output V6 engine with 235 horsepower, 6-speed automatic transaxle and AutoStick<sup>®</sup>, Journey delivers. Equip Journey with available all-wheel drive (AWD) for improved performance and decisive handling in nearly all conditions. <sup>1</sup>Star ratings are part of the U.S. Department of Transportation's SaferCar.gov program ([www.safercar.gov](http://www.safercar.gov)). <sup>2</sup>Based on Ward's 2008 Large Cross/Utility Vehicle segment. EPA estimated 19 city/25 highway.

Journey R/T shown in Inferno Red Crystal Pearl with striking 19-inch machined cast-aluminum wheels. Visit [www.dodge.com/journey](http://www.dodge.com/journey)



**INTERIOR TECHNOLOGY. 1 PARKVIEW REAR BACK-UP CAMERA.**<sup>[1]</sup> An available camera on Journey's liftgate displays a rearview video image on the radio screen while vehicle is in reverse, providing the driver with additional rearward visibility.

**2 MYGIG.**<sup>[2]</sup> The available MyGIG Multimedia Infotainment System with Navigation<sup>[3]</sup> bundles entertainment, information, and communication. It combines navigation with real-time traffic updates via SIRIUS® Satellite Radio<sup>[4]</sup>. When MyGIG is paired with the UConnect® Hands-Free Communication System, you can change radio stations, order up digital audio files, and input destination information through voice activation in three languages: English, French, and Spanish. There's also a 30GB hard drive for storing photos and upwards of 4,100 digital music files, playlists, maps, points of interest, and more. The 7-inch LCD monitor with full-color enhanced graphics uses a joystick to surf seamlessly through MyGIG functions. The also-available touch-screen MyGIG Multimedia Entertainment System<sup>[2]</sup> provides all the same great features but without the navigation and joystick function. **PREMIUM SOUND SYSTEM.** Opt for the 6 ∞Infinity® premium speakers, subwoofer, and 368-watt amplifier.

<sup>[1]</sup>Always check entire surroundings before backing up. <sup>[2]</sup>MyGIG in-dash DVD capability is not available in all states. See your dealer for details. <sup>[3]</sup>Late availability. <sup>[4]</sup>SIRIUS® and the SIRIUS dog logo are registered trademarks of SIRIUS Satellite Radio Inc. All other trademarks, service marks and logos are the property of their respective owners. For full terms and conditions, visit [sirius.com](http://sirius.com). Prices and programming are subject to change. Not available in AK and HI.



R/T shown with Light Grayscale/Dark Slate Gray leather-trimmed interior and available third-row seats.

Properly secure all cargo.



**FIVE-PASSENGER SEATING WITH AVAILABLE THIRD ROW.** Journey's interior starts with standard five-passenger seating, featuring 40/60 split fold-flat stadium-style second-row seats with fore/aft adjustment and an available power six-way driver's seat. Leather-trimmed seats are standard on R/T models while SXT models sport class<sup>11</sup>-exclusive YES Essentials<sup>®12</sup> stain resistant, odor resistant, antistatic seat fabric for easy cleaning. All seats, even the second row, recline. **AVAILABLE THIRD-ROW SEATS.** Choose Journey's available third row for seating two additional passengers. The 50/50 split fold-flat rear seats recline six degrees for added relaxation. **TILT 'N SLIDE.™** Thanks to available Tilt 'n Slide second-row seats and rear doors that open 90 degrees, Journey has one of the easiest rear entries. The seats move easily to accommodate entry to the available third-row seats. **REAR CARGO AREA.** The standard tri-fold load floor behind the second-row seat gives five-passenger models an extra 4.2 cu ft of added utility. The load floor converts to "grocery bag mode," to keep your eggs from scrambling before you reach your driveway. Dig a little deeper on any Journey model and you'll find another level in the cargo bin that conceals the jack, jack tools, and spare tire winch. <sup>11</sup>Based on Ward's 2008 Large Cross/Utility Vehicle segment. <sup>12</sup>Not compatible with aftermarket fabric-protecting coatings.



IN-FLOOR STORAGE



FOLD-FLAT FRONT-PASSENGER SEAT



TILT 'N SLIDE™



FLIP 'N STOW™



**MOST INNOVATIVE  
FEATURES IN ITS CLASS.<sup>[1]</sup>**

DUAL GLOVE BOX WITH CHILL ZONE®

Properly secure all cargo.

**DESIGNED TO GRAB ATTENTION.** With the most innovative features in its class,<sup>[1]</sup> Journey holds both people and their gear with the same degree of attention. Seats were crafted to be comfortable and entryways were designed to be accommodating. Storage bypassed the status quo to become ingeniously inventive. Every cubic foot of Journey's cabin was mapped and calculated to create the optimal ratio of passenger space to cargo room. Seats were constructed to accommodate up to seven people or fold flat for optimum cargo capacity. Floors got storage bins. Glove boxes got makeovers. Hidden compartments were added below the seat cushions. The result is the perfect combination of form and function: Dodge Journey. <sup>[2]</sup>Based on Ward's 2008 Large Cross/Utility Vehicle segment.

Journey R/T shown with Brilliant Black Crystal Pearl exterior and Light Graystone/Dark Slate Gray leather-trimmed interior.



Properly secure all cargo.

**BEST-IN-CLASS<sup>III</sup>**  
**STORAGE SYSTEM.**

**1 CARGO AREA.** A standard hidden storage bin and access door to the tool and jack compartment is located behind the rear seat. When hauling gear is the priority, simply fold down the second- and available third-row seats for 67.6 cu ft of cargo capacity. Five-passenger models feature a tri-fold load floor with in-floor storage bin. **2 REAR CUP HOLDERS.** Clever cup holders conveniently located on the rear quarter panel accommodate up to 20-oz drinks or juice boxes. Two more cup holders can be found in the second-row fold-down console. **3 MAP POCKETS.** Found on all four passenger doors, molded map pockets give you even more places to stash stuff like maps, books, 20-oz drink containers, and more. The location makes it easy to retrieve what you need even when Journey's in motion. **4 IN-FLOOR STORAGE.** The second-row floor provides even more clever storage. Two in-floor storage bins with latching lids can each hold up to a dozen 12-oz cans plus ice or other items. For added convenience, these bins have washable, removable liners so they're a snap to clean and make the perfect tailgating accessory. **5 FLOOR CONSOLE.** Easily accessible, the center floor console offers illuminated cup holders and storage that keeps larger items — like a purse or portable electronics — out of sight. The available 115-volt/150-watt two-prong power outlet allows passengers to kick back with gaming or video or audio hookup. **6 FLIP 'N STOW.™** Standard on SXT and R/T models, the hinged cushion on the fold-flat front-passenger seat flips forward to reveal a large bin perfect for stowing a laptop or purse — or containing carryout meals. **7 DUAL GLOVE BOX.** This two-tiered glove box surpasses its utilitarian roots. Level one is a compartment aptly named Chill Zone® that can maintain the cool temperature of two 12-oz cans with the help of Journey's air conditioning. Level two features 347.8 cu in of space to hold the Owner's Manual plus other essential items.

<sup>III</sup>Based on World's 2008 Large Cross/Utility Vehicle segment.



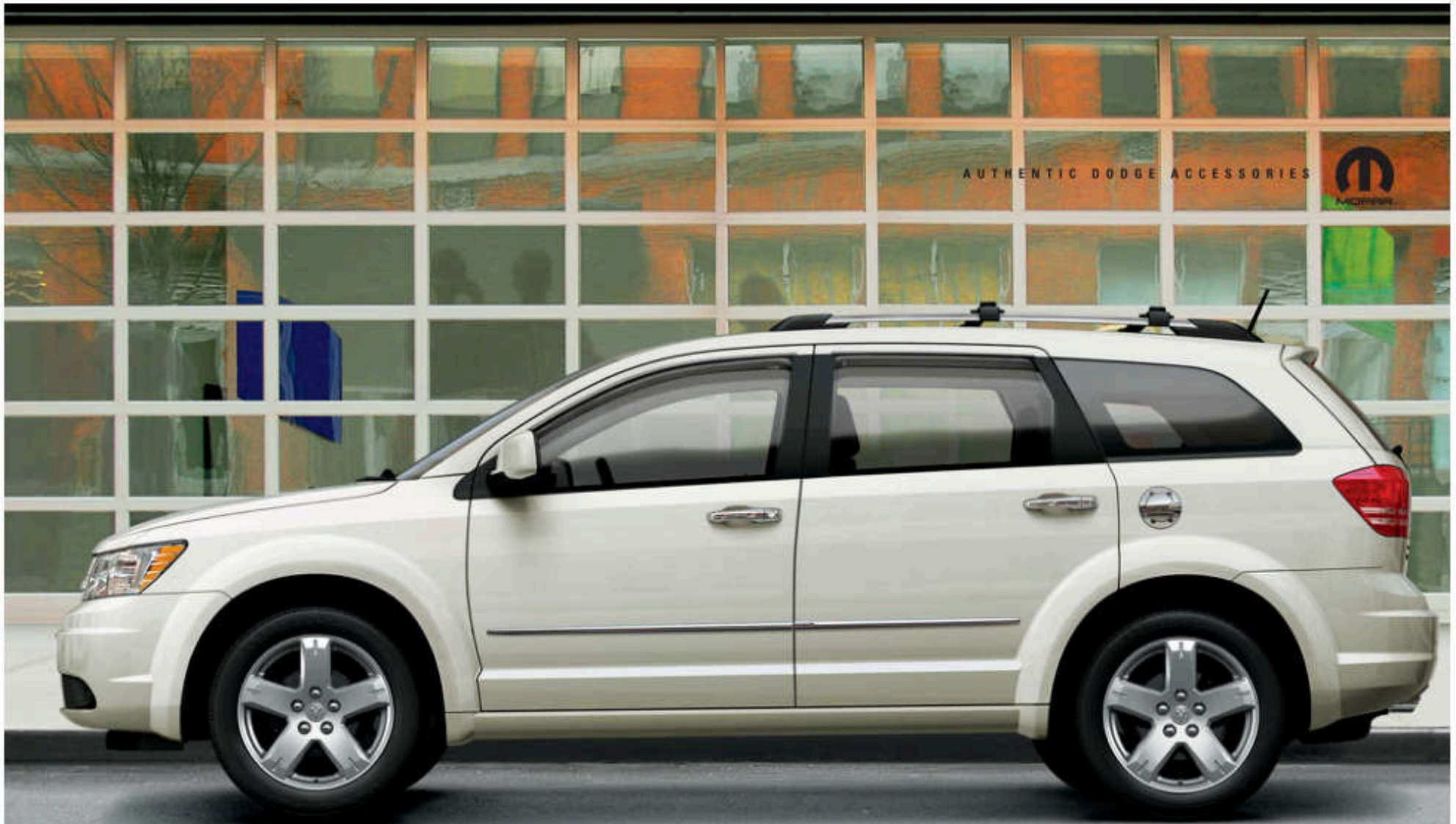
2 REAR DVD



1 REAR TEMPERATURE CONTROLS



**1 AVAILABLE REAR TEMPERATURE CONTROLS.** Dials located overhead let rear-seat passengers control the rear HVAC units for a perfect climate-controlled environment. **2 REAR DVD.** The available factory-installed DVD Rear Seat Video™ System with CD/MP3 capability and wireless headphones is a virtual multiplex entertainment venue. The system features an eight-inch liquid crystal display (LCD) screen, remote control and two wireless, multi-channel headphones. The system plays DVD, MP3, as well as audio and video CDs. Auxiliary input jacks on the console allow video camera, video-game console and portable MP3 player connectivity. **SIRIUS BACKSEAT TV!™** This optional system provides live content from Nickelodeon™, Disney Channel, and Cartoon Network to stream directly to Journey. **CONVERSATION MIRROR.** Easily retracted from the available overhead front console, the conversation mirror keeps the driver in the loop while keeping an eye on rear-seat passengers. <sup>†</sup>Late availability.



**AUTHENTIC DODGE ACCESSORIES.** Give your Journey style and protection that stands out without selling out on fit, finish and functionality. Authentic Dodge Accessories by Mopar (shown right) include Chrome Bodyside Moldings and Chrome Fuel Filler Door for bright, bold looks, and Side Window Air Deflectors for elemental protection with plenty of style. For the full line of original equipment accessories for your Dodge vehicle, check us out at [mopar.com](http://mopar.com)

Journey R/T shown in Stone White.

★★★★★  
FIVE-STAR

HIGHEST GOVERNMENT  
FRONTAL CRASH TEST RATING

IT WAS DESIGNED TO  
SAFELY AND SECURELY  
SHOULDER ITS WAY  
THROUGH EVERY  
SCENE WITH A  
CONFIDENCE THAT'S  
ALL ITS OWN.

Star ratings are part of the U.S. Department of Transportation's SaferCar.gov program ([www.safercar.gov](http://www.safercar.gov)).



**JOURNEY SAFELY.** Sophisticated engineering systems like crush zones, safety cage construction, and more, all work together to absorb or direct impact energy away from the passenger compartment in the unfortunate event of an accident. **AIR BAGS.**<sup>1)</sup> Advanced multistage driver and front-passenger air bags,<sup>1)</sup> supplemental side-curtain air bags<sup>1)</sup> for all three rows, and driver and front-passenger supplemental seat-mounted side air bags<sup>1)</sup> are all standard on Journey. **INTEGRATED CHILD BOOSTER SEAT.**<sup>2)</sup> Journey offers integrated child booster seats for children who have outgrown child safety seats. **STANDARD ELECTRONIC STABILITY PROGRAM (ESP).**<sup>3)</sup> ESP — which includes all-speed Traction Control, Brake Assist, Electronic Roll Mitigation, and Trailer Sway Control — assists drivers in maintaining control of their vehicle during extreme steering maneuvers. ESP works to correct the vehicle's course by automatically controlling the throttle and applying the brakes at individual wheels. **ANTILOCK BRAKE SYSTEM (ABS).** Standard four-wheel disc brakes use state-of-the-art electronics to help prevent wheel lockup for improved steering under extreme braking or slippery conditions. **TIRE PRESSURE MONITORING.** A warning lamp illuminates when low tire pressure is detected. **ALL-WHEEL DRIVE (AWD).** Equip Journey SXT or R/T models with AWD for improved performance and handling, as well as added traction in nearly all conditions, especially on wet, slippery roads.



THE ALL-NEW DODGE JOURNEY INCLUDES THE BEST-IN-THE-BUSINESS LIFETIME POWERTRAIN LIMITED WARRANTY WITH UNLIMITED MILEAGE.

Non-transferable. See dealer for a copy of limited warranty and details. Not available on SRT, model vehicles, lexicon, Durango Cab, and select fleet vehicles.



<sup>1)</sup>Always sit properly in the seat with the seat belt fastened. Children 12 and under should always be in a backseat correctly using an infant or child restraint system, or the seat belt positioned correctly for the child's age and weight. <sup>1)</sup>48-85 lb up to 4' 9". Late availability. <sup>2)</sup>No system, no matter how sophisticated, can repeal the laws of physics or overcome careless driving actions. Performance is limited by available traction, which snow, ice and other conditions can affect. When the ESP warning lamp in the speedometer flashes, the driver needs to use less throttle and adapt speed and driving behavior to prevailing road conditions. Always drive carefully, consistent with conditions. Always wear your seat belt.



**JOURNEY R/T**

**JOURNEY SXT**

**JOURNEY SE**

**TRIM LEVELS**

**JOURNEY SE HAS STANDARD:**

- Best-in-class <sup>(1)</sup> fuel economy
- 2.4-liter DOHC I-4 World Engine with dual VVT and 4-speed automatic
- 6 standard air bags
- Electronic Stability Program (ESP)
- 4-wheel disc antilock brake system (ABS)
- 16-inch tires with painted wheel covers

**WITH JOURNEY SXT YOU GET:**

- FWD**
- 3.5L High Output V6 with 6-speed automatic
  - SIRIUS<sup>®</sup> Satellite Radio
  - Touring suspension
  - YES Essentials<sup>®</sup> Seat Fabric
  - 17-inch tires with aluminum wheels

**AWD**

- 19-inch tires with machined cast-aluminum wheels
- Performance steering and suspension

**JOURNEY R/T ALSO GIVES YOU:**

- 19-inch tires with machined cast-aluminum wheels
- Chrome door handles and roof rack side rails
- Leather-trimmed with heated front seats
- Dual zone automatic temperature control
- Remote start
- Performance steering and suspension

<sup>(1)</sup>Based on Ward's 2008 Large Cross/Utility Vehicle segment. EPA estimated 19 city/25 highway.



**LIGHT SANDSTONE METALLIC**



**INFERNO RED CRYSTAL PEARL**



**BRIGHT SILVER METALLIC**



**MELBOURNE GREEN PEARL**



**SURF BLUE PEARL<sup>(1)</sup>**



**STONE WHITE**



**SILVER STEEL METALLIC**



**DEEP WATER BLUE PEARL**



**BRILLIANT BLACK CRYSTAL PEARL**

<sup>(1)</sup>Late availability.



### WHEELS

Styled to enhance Journey's abundant attitude, every wheel choice makes a brilliant statement all its own.

- 1 16-inch painted wheel cover (Standard on SE)
- 2 16-inch aluminum wheel (Optional on SE)
- 3 17-inch aluminum wheel (Standard on SXT FWD)
- 4 19-inch machined cast-aluminum wheel (Standard on SXT AWD and R/T and optional on SXT FWD)
- 5 19-inch chrome-clad aluminum wheel (Optional on SXT and R/T)

### TOWING

#### TOWING CAPACITY

- 2.4L I-4 – 1,000 lb
- 3.5L V6 with Trailer Tow Group – 3,500 lb



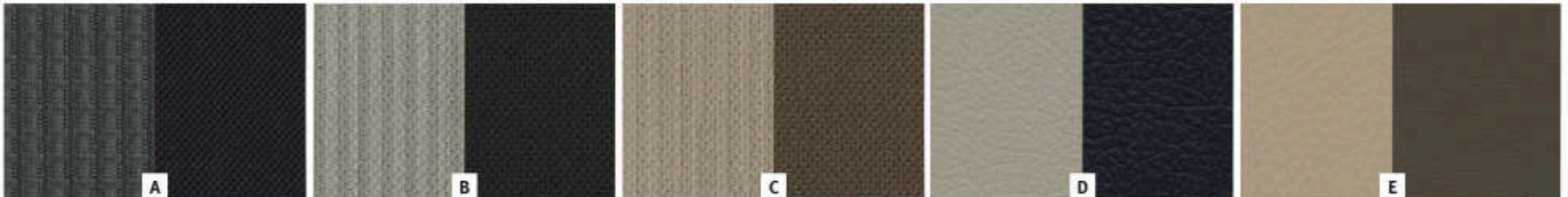
**2.4L DOHC 16V I-4 WORLD ENGINE WITH DUAL VVT**

Standard on Journey SE  
 173 horsepower @ 6,000 rpm  
 166 lb-ft of torque @ 4,400 rpm



**3.5L SOHC 24V HIGH OUTPUT V6**

Standard on Journey SXT and R/T  
 235 horsepower @ 6,400 rpm  
 232 lb-ft of torque @ 4,000 rpm



**FABRIC GUIDE** Standard - S, Optional - O

- A Delta/Wallace II Cloth Medium Slate Gray/Dark Slate Gray
- B Bamboo and Racine Cloth with YES Essentials® Light Graystone/Dark Slate Gray
- C Bamboo and Racine Cloth with YES Essentials® Pebble Beige Two-Tone
- D Bristol Leather Trim/Bristol Vinyl Light Graystone/Dark Slate Gray
- E Bristol Leather Trim/Bristol Vinyl Pebble Beige Two-Tone

S	E	S	X	T	R	/	T
x (S)							
x (O)		x					
		x					
							x
							x

About this catalog: Since the time of printing, some of the information you'll find in this catalog may have been updated. Ask your dealer for details. Some of the equipment shown or described throughout this catalog is available at extra cost. Specifications, descriptions, illustrative materials, and all competitive comparisons contained herein are as accurate as known at the time this publication was approved for printing. Chrysler LLC reserves the right to discontinue models at any time or change specifications without notice and without incurring obligation. All options are required in combination with other options. For the price of the model with the equipment you desire, or verification of specifications contained here, see your Dodge dealer. Dodge, Mopar, Uconnect, ParkView and Sentry Key are registered trademarks of Chrysler LLC. DVD Rear Seat Video, Flip 'n Stow, Tilt 'n Slide and MyGIG are trademarks of Chrysler LLC. iPod and the iPod design are registered trademarks of Apple, Inc. "SIRIUS," "SIRIUS Backseat TV," the SIRIUS dog logo and related marks are trademarks of SIRIUS Satellite Radio Inc. All other trademarks, service marks and logos are the property of their respective owners. For full terms and conditions, visit sirius.com. Prices and programming are subject to change. Not available in AK and HI. © 2008 Viacom International Inc. All rights reserved. Nickelodeon and all related titles, logos and characters are trademarks of Viacom International Inc. DISNEY CHANNEL and The DISNEY CHANNEL LOGO are trademarks of Disney Enterprises, Inc. and used with permission. TM and © Cartoon Network. Insurance is underwritten by member companies of American International Group, Inc. YES Essentials is a registered trademark of Milliken & Company. Bluetooth is a registered trademark of Bluetooth SIG Inc. ∞Infinity is a registered trademark of Harman International Industries, Inc. HomeLink is a registered trademark owned by Johnson Controls, Inc. Chrysler Financial is a business unit of DaimlerChrysler Financial Services Americas LLC. The Dodge Rewards Visa credit card is issued and administered by FIA Card Services, N.A.

# JOURNEY BUYER'S GUIDE

## FEATURES COMMON ACROSS ALL TRIM LEVELS

<b>AIR BAGS<sup>11</sup></b> — Advanced multistage driver and front-passenger — Supplemental front-seat-mounted side air bags — Supplemental side-curtain air bags — all three rows
<b>BRAKES</b> — Antilock 4-wheel disc
<b>CHILD PROTECTION REAR DOOR LOCKS</b>
<b>CHILD SEAT ANCHOR SYSTEM (LATCH)</b> — Lower child seat anchors and upper tether anchors help ease the installation of aftermarket child seats
<b>ELECTRONIC STABILITY PROGRAM<sup>12</sup></b> — Includes Brake Assist, all-speed Traction Control, Electronic Roll Mitigation and Trailer Sway Control
<b>GLOVE BOX</b> — Dual, with upper Chill Zone <sup>®</sup> beverage storage bin
<b>HEADLAMPS</b> — Halogen, quad with off-time delay
<b>LIGHTING</b> — Illuminated cup holders — Rear courtesy/reading lamps
<b>POWER ACCESSORY</b> — 12-volt auxiliary power outlet in instrument panel and center console and 12-volt DC front and rear power outlets
<b>RADIO</b> — AM/FM and integrated 6-disc CD/DVD changer with MP3 capability and auxiliary input jack
<b>SEATING AND TRIM</b> <b>FRONT</b> — Low-back bucket seats
<b>SECOND ROW</b> — 40/60 fold-flat seat with fore/aft adjust and recline — Front-seat child presenter (second-row seat comes forward to allow driver or front passenger easy access to child in second row) — Fold-down center armrest with storage and cup holders
<b>SENTRY KEY<sup>®</sup> THEFT DETERRENT SYSTEM</b>
<b>SPEAKER SYSTEMS</b> — 6 speakers
<b>STEERING COLUMN</b> — Tilt, telescopic
<b>STORAGE</b> — Instrument panel storage bin — Second-row in-floor storage bins — Tri-fold load floor, reversible (3-passenger) — Cargo tie-down loops
<b>TIRE PRESSURE MONITORING WARNING LAMP</b> — Alerts driver to low tire pressure
<b>TIRES</b> — Compact spare

<sup>11</sup>Always sit properly in the seat with the seat belt fastened. Children 12 and under should always be in a backseat correctly using an infant or child restraint system or the seat belt positioned correctly for the child's age and weight. <sup>12</sup>No system, no matter how sophisticated, can repeal the laws of physics or overcome careless driving actions. Performance is limited by available traction, which snow, ice and other conditions can affect. When the ESP warning lamp in the speedometer flashes, the driver needs to use less throttle and adapt speed and driving behavior to prevailing conditions. Always drive carefully, consistent with conditions. Always wear your seat belt. <sup>13</sup>Not compatible with aftermarket fabric-protecting coatings. <sup>14</sup>Late availability. <sup>15</sup>MyGIG in-dash DVD capability is not available in all states. See your local dealer for details. <sup>16</sup>SIRIUS, <sup>17</sup>SIRIUS Backseat TV, <sup>18</sup>the SIRIUS dog logo and related marks are trademarks of SIRIUS Satellite Radio Inc. All other trademarks, service marks and logos are the property of their respective owners. For full terms and conditions, visit sirius.com. Prices and programming are subject to change. Not available in AK and HI. <sup>19</sup>Always check entire surroundings before backing up. <sup>20</sup>Requires Bluetooth<sup>®</sup> enabled mobile phone. © 2007 Viacom International Inc. All rights reserved. Nickelodeon and all related titles, logos and characters are trademarks of Viacom International Inc. DISNEY CHANNEL and the DISNEY CHANNEL LOGO are trademarks of Disney Enterprises, Inc. and used with permission. TM and © Cartoon Network.

	FWD			AWD	
	SE	SXT	R/T	SXT	R/T
<b>ENGINE AND TRANSMISSION</b>	2DF	2DK	2DX	2DT	2DX
3.5L HIGH OUTPUT V6 24V MPI/6-SPEED AUTOMATIC WITH AUTOSTICK <sup>®</sup>		28K	28X	28T	28X
2.4L DOHC I-4 16V DUAL VVT /4-SPEED AUTOMATIC	22F				
<b>MECHANICAL</b>					
<b>ALTERNATOR</b> — 140-amp — 160-amp (included with Flexible Seating Group)		•	•	•	•
<b>ENGINE BLOCK HEATER</b>	Q	Q	Q	Q	Q
<b>FUEL TANK</b> — 20.5 gallon — 21.1 gallon	•	•	•	•	•
<b>REMOTE START SYSTEM</b> (included with Premium Convenience Group)		P	•	P	•
<b>SPEED CONTROL</b> (included with Popular Equipment Group)	P	•	•	•	•
<b>STEERING</b> — Power rack-and-pinion — Performance (included with 19" wheels)	•	•	•	•	•
<b>SUSPENSION</b> — Normal-duty — Touring — Performance (included with 19" wheels)	•	•	•	•	•
<b>EXTERIOR FEATURES</b>					
<b>EXHAUST TIPS</b> — Dual, bright		•	•	•	•
<b>HEADLAMPS</b> — Automatic — Fog lamps (included with Chrome Appearance Group or Exterior Appearance Group) — Daytime running lamps (included with Family Value Group)	P	P	•	•	•
<b>ROOF RACK</b> — Side rails, Black (includes adjustable roof rail crossbars; included with Popular Equipment Group or Convenience Group I) — Side rails, bright — Roof rail crossbars, adjustable (included with roof rack side rails on SE and SXT or with Convenience Group II on R/T)	P	P		P	
<b>TIRES</b> — P225/70R16 All Season — P225/65R17 BSW AS Touring — P225/55R19 BSW AS Touring (included with 19" wheels)	•	•	•	•	•
<b>WHEELS</b> — 16" wheels with wheel covers — 16" aluminum wheels (included with Exterior Appearance Group) — 17" aluminum wheels — 19" machined cast-aluminum wheels (includes performance suspension and steering; included with Exterior Appearance Group) — 19" chrome-clad cast-aluminum wheels (includes performance suspension and steering; included with Chrome Appearance Group)	•	P	•	•	•
<b>INTERIOR FEATURES</b>					
<b>AIR CONDITIONING</b> — Manual — Dual zone automatic temperature control (included with Premium Convenience Group) — Rear with heater (included with Flexible Seating Group) — Three-zone manual temperature control (included with rear air conditioning) — Three-zone automatic temperature control (included with rear air conditioning or Flexible Seating Group and Premium Convenience Group)	•	•	•	•	•
<b>AIR FILTRATION</b> (included with Popular Equipment Group or Convenience Groups)	P	P	P	P	P
<b>ASSIST HANDLES</b> — Passenger-assist handles (included with Popular Equipment Group)	P	•	•	•	•

	FWD			AWD	
	SE	SXT	R/T	SXT	R/T
<b>INTERIOR FEATURES (CONTINUED)</b>	2DF	2DK	2DX	2DT	2DX
<b>CONSOLE</b> — Floor with fore/aft sliding armrest — Full length floor with fore/aft sliding premium armrest — Overhead console with interior conversation mirror and sunglasses holder (included with Popular Equipment Group)	•	•	•	•	•
<b>ELECTRONIC VEHICLE INFORMATION CENTER</b> (included with Convenience Group I)			P		P
<b>FLOOR MATS</b> — Front and rear (included with Popular Equipment Group)	P	•	•	•	•
<b>GAUGES</b> — Premium instrument cluster with display (includes Electronic Vehicle Information Center; included with Convenience Group I) — Trip computer with temperature and compass			P		P
<b>HOMELINK<sup>®</sup> UNIVERSAL TRANSCEIVER</b> (included with Convenience Group I)		P	•	P	•
<b>INTERIOR ACCENTS</b> — Base door trim panel, monochromatic — Highline door trim panel, two-tone — Premium door trim panel, two-tone — Color-keyed instrument panel bezels — Bright instrument panel bezel — Leather-wrapped shift knob	•	•	•	•	•
<b>LIGHTING</b> — Front courtesy/map lamps — Front and rear swiveling LED lamps (included with Convenience Group I) — Driver and front-passenger footwell LED lamps (included with Convenience Groups) — Removable, rechargeable LED flashlight	•	P	•	P	•
<b>MIRRORS</b> — Rearview manual day/night — Rearview, auto-dimming — Rearview, auto-dimming with microphone (included with UConnect <sup>™</sup> Hands-Free Communication System) — Interior conversation mirror (included with overhead console)	•	P	•	P	P
<b>POWER ACCESSORY</b> — 115-volt auxiliary outlet	•	•	•	•	•
<b>STEERING WHEEL</b> — Urethane — Leather-wrapped, includes steering wheel-mounted audio controls (included with Entertainment Group II or Convenience Group I)	•	•	•	•	•
<b>STORAGE</b> — Front-passenger Flip 'n Stow <sup>™</sup> in-seat storage — Grocery bag hooks — In-floor cargo bin (7-passenger)		•	•	•	•
<b>SUNROOF</b> — Power with express open/close		O	O	O	O
<b>VISORS</b> — Driver sun visor with mirror; passenger visor — Driver and front-passenger sun visors with illuminated vanity mirrors (included with Popular Equipment Group)	•	P	•	•	•
<b>SEATING AND TRIM</b>					
<b>FABRIC</b> — Cloth low-back bucket seats — Premium Cloth low-back bucket seats with YES Essentials <sup>®</sup> Seat Fabric <sup>™</sup> (included with Family Value Group) — Leather-trimmed bucket seats (includes heated front seats)	•	P	•	•	•
<b>FRONT</b> — Manual driver lumbar adjuster (included with Family Value Group) — Manual driver height adjuster — Power 6-way driver seat — Heated front seats (included with Premium Convenience Group) — Front-passenger forward fold-flat seat with Flip 'n Stow <sup>™</sup> in-seat storage	P	•	•	•	•

	FWD			AWD	
	SE	SXT	R/T	SXT	R/T
<b>SEATING AND TRIM (CONTINUED)</b>	2DF	2DK	2DX	2DT	2DX
SECOND ROW — Easy entry 40/60 Tilt 'n Slide™ seat with recline (included with Flexible Seating Group)		P	P	P	P
— Second-row seat with two child boosters <sup>(1)</sup> (included with Family Value Group)		P	P	P	P
THIRD ROW — 50/50 fold-flat seat with recline (included with Flexible Seating Group)		P	P	P	P
<b>AUDIO/VIDEO OPTIONS</b>					
RADIOS — MyGIG® Multimedia Entertainment System <sup>(1)</sup> includes AM/FM radio with 30GB HDD, CD/DVD/MP3 compatible player and auxiliary input jack (included with Safe and Sound Group)		P	P	P	P
— MyGIG® Multimedia Infotainment System <sup>(1)</sup> with Navigation <sup>(1)</sup> includes AM/FM radio with 30GB HDD, 6-disc CD/DVD changer with MP3 capability and auxiliary input jack (includes SIRIUS® Satellite Radio, real-time traffic and leather-wrapped steering wheel; included with Entertainment Group II)			P	P	P
SIRIUS BACKSEAT TV <sup>(M)</sup> — Requires Rear Seat Video Group and SIRIUS Satellite Radio		O	O	O	O
SIRIUS® SATELLITE RADIO <sup>(1)</sup> — With one-year service contract (included with MyGIG Multimedia Infotainment System with Navigation)		O/P	*	*	*
SPEAKER SYSTEMS — Premium Sound System with 6- <sup>(1)</sup> Infinity <sup>®</sup> speakers, subwoofer and 368-watt amplifier (included with Entertainment Group II or Rear Seat Video Group)		O/P	O/P	O/P	O/P
UNIVERSAL CUSTOMER INTERFACE — Allows driver or front passenger to control iPod through the radio. Interface is located in the glove box (included with UConnect <sup>™</sup> Hands-Free Communication System; not available with Entertainment Group II)			P	P	P
<b>SAFETY AND SECURITY</b>					
PARKVIEW® REAR BACK-UP CAMERA <sup>(1)</sup> (included with Entertainment Group II or Safe and Sound Group)		P	P	P	P
REMOTE KEYLESS/ILLUMINATED ENTRY (included with Popular Equipment Group)		P	*	*	*
SECURITY ALARM (included with Popular Equipment Group)		P	*	*	*
TONNEAU COVER — Included with Popular Equipment Group and Convenience Groups (5-passenger)		P	P	P	P
UCONNECT® HANDS-FREE COMMUNICATION SYSTEM <sup>(1)</sup> — Includes auto-dimming rearview mirror with microphone (included with Premium Convenience Group, Convenience Group II or Entertainment Group II)			P	P	P
<b>PACKAGES</b>					
CHROME APPEARANCE GROUP — Includes fog lamps and 19" chrome-clad cast-aluminum wheels (not available with Exterior Appearance Group)			O		
CONVENIENCE GROUP I — Includes tonneau cover (5-passenger), air filtration, driver and front-passenger footwell LED lamps, front and rear swiveling LED lamps, leather-wrapped steering wheel with audio controls, roof rack with adjustable roof rail crossbars and HomeLink <sup>®</sup> Universal Transceiver			O	O	
CONVENIENCE GROUP II — Includes tonneau cover (5-passenger), air filtration, EVIC, driver and front-passenger footwell LED lamps, adjustable roof rail crossbars, and UConnect Hands-Free Communication System				O	O
ENTERTAINMENT GROUP II (not available with Safe and Sound Group) — Includes 6 premium speakers with subwoofer and 368-watt amplifier, MyGIG Multimedia Infotainment System with Navigation, UConnect Hands-Free Communication System and ParkView Rear Back-Up Camera			O	O	O

#### PACKAGES (CONTINUED)

	FWD			AWD	
	SE	SXT	R/T	SXT	R/T
EXTERIOR APPEARANCE GROUP — Includes fog lamps and 16" aluminum wheels (on SE) or 19" machined cast-aluminum wheels (on SXT)	O	O			
FAMILY VALUE GROUP — Includes premium cloth low-back bucket seats with YES Essentials <sup>®</sup> Seat Fabric (SE only), manual driver lumbar adjuster (SE only), second-row seat with two child booster seats and daytime running headlamps (requires a Convenience Group on SXT and R/T)	O	O	O	O	O
FLEXIBLE SEATING GROUP — Includes third-row 50/50 fold-flat seat with recline, easy-entry second-row 40/60 Tilt 'n Slide™ seat with recline, rear air conditioning with heater and 160-amp alternator		O	O	O	O
POPULAR EQUIPMENT GROUP — Includes front and rear floor mats, tonneau cover (5-passenger), overhead console, sunscreen glass, sun visors with illuminated vanity mirrors, remote keyless/illuminated entry, air filtration, passenger assist handles, roof rack with adjustable roof crossbars, security alarm and speed control	O				
PREMIUM CONVENIENCE GROUP (requires Convenience Group I) — Includes dual zone automatic temperature control (5-passenger), three-zone automatic temperature control (7-passenger), heated front seats, UConnect Hands-Free Communication System and remote start system				O	
REAR SEAT VIDEO GROUP (requires Safe and Sound Group or Entertainment Group II) — Includes 2nd-row overhead 8" video screen, wireless headphones, remote control, auxiliary video input jacks, and 6 premium speakers with subwoofer and 368-watt amplifier	O	O	O	O	O
SAFE AND SOUND GROUP — Includes MyGIG Multimedia Entertainment System and ParkView Rear Back-Up Camera	O	O	O	O	O
SMOKER'S GROUP — Includes removable ashtray and cigar lighter	O	O	O	O	O
TRAILER TOW GROUP (requires Convenience Group) — Includes engine oil cooler and trailer tow with 4-pin connector wiring harness		O	O	O	O

Chrysler Financial

REWARDS VISA

AUTO INSURANCE

BUSINESSLINK



the goods

Service Contract

SIRIUS SATELLITE RADIO  
THE BEST RADIO ON RADIO

SIRIUS BACKSEAT TV

Infinity SOUND SYSTEMS

LIFETIME BUREAU WARRANTY

With Chrysler Financial, you can get great finance options, competitive rates and flexible payment plans. Learn more about your financing benefits and even submit a credit application at [chryslerfinancial.com](http://chryslerfinancial.com).

With the Dodge Rewards Visa credit card, you earn points for every purchase you make, which can be redeemed for anything at your Chrysler, Jeep or Dodge dealership — all with no annual fee! Visit [dodgecreditcard.com](http://dodgecreditcard.com) for more information on how to apply!

The only insurance guaranteed to repair your vehicle using Authentic Dodge Collision Repair Parts by Mopar for as long as you own your Dodge vehicle, and up to \$100 off your deductible when those repairs are done at a Dodge dealership — all at rates that are tough to beat. For a free quote, visit [www.dodgeautoinsurance.com](http://www.dodgeautoinsurance.com) or call 800-836-1598 and mention keyword QL9XXX.

If your business relies on vehicles, Dodge BUSINESSLINK can save you time, money and hassles. For more, log on to [dodge.com/businesslink](http://dodge.com/businesslink) or call us toll-free at 877-2THELINK (877-284-3546).

Enhance your Dodge Journey with Authentic Dodge Accessories by Mopar. They're designed specifically for your vehicle, for exceptional fit, finish and performance. Visit your dealership or [mopar.com](http://mopar.com).

The Dodge Goods catalog is a handpicked collection of items bearing the powerful Dodge name — from Motorsports apparel and collectible die-cast models to the latest in work and ranch wear. It's all found at [dodge.com/goods](http://dodge.com/goods). Call 877-789-DODGE (3634) for a free catalog.

Your Dodge is one of the best-performing vehicles on the road. Why not protect your investment with a Chrysler Service Contract or Maintenance Plan? For more information, see your Dodge dealer, call 1-800-442-2666 or visit [servicecontracts.chrysler.com](http://servicecontracts.chrysler.com).

SIRIUS Satellite Radio delivers over 130 channels, including 100% commercial-free music, sports, news, talk, entertainment, traffic and weather. Factory-installed SIRIUS Satellite Radio includes a one-year subscription. For more information, go to [sirius.com](http://sirius.com).

SIRIUS Backseat TV<sup>®</sup> features the best brands in family entertainment directly broadcast to your vehicle 24/7: Nickelodeon<sup>®</sup>, Disney Channel and Cartoon Network. All vehicles are pre-activated with service from the factory. Vehicles must be equipped with a rear-seat entertainment system and SIRIUS Satellite Radio. One year of service provided by SIRIUS. For more information, call 1-888-539-7474 or go to [sirius.com](http://sirius.com).

<sup>(1)</sup>Infinity Sound Systems is a high-quality global audio brand, providing musical accuracy and legendary speaker innovation. An industry leader in Audio Technology, Performance, and Design.

The All-New Dodge Journey includes a Lifetime Powertrain Limited Warranty. Non-Transferable. Not available on SRT, diesel vehicles, Sprinter, Ram Chassis Cab, and certain fleet vehicles. See dealer for a copy of limited warranty and details.

#### 3/36 BASIC LIMITED WARRANTY

All Dodge vehicles are covered by the Chrysler 3-year/36,000-mile Basic Limited Warranty. See dealer for a copy of this limited warranty. Excludes normal maintenance and wear items.