

2012  
DODGE JOURNEY





Journey Crew shown in Bright Silver Metallic.



# DODGE JOURNEY

IT'S A RARE BALANCE OF VERSATILITY, PERFORMANCE, AND SOPHISTICATION THAT MAKES *JOURNEY AMERICA'S MOST VERSATILE<sup>[1]\*</sup> AND AFFORDABLE<sup>[2]</sup> MID-SIZE CROSSOVER.*

**TONED AND CHISELED,** IT MOVES THROUGH THE STREETS WITH CONFIDENCE.

***AMAZING FLEXIBILITY*** HOLDS BOTH PEOPLE AND THEIR GEAR WITH THE SAME DEGREE OF ATTENTION. THIS IS THE ULTIMATE COMBINATION OF ***FORM AND FUNCTION.*** THIS IS THE DODGE JOURNEY.

---

## JOURNEY STANDS OUT //

- MOST AFFORDABLE MID-SIZE CROSSOVER<sup>[2]</sup>
- MOST AFFORDABLE SEVEN-PASSENGER VEHICLE IN AMERICA<sup>[3]</sup>
- PREMIUM INTERIOR WITH SOFT-TOUCH SURFACES
- A 2011 INSURANCE INSTITUTE FOR HIGHWAY SAFETY (IIHS) TOP SAFETY PICK

---

\*A note about this brochure: All disclaimers and disclosures can be found on the inside back cover.



Journey R/T shown in Brilliant Black Crystal Pearl with available roof side rails.

**A TOUCH OF SPORT IN A VEHICLE THAT'S GAME FOR ANYTHING.** Journey R/T\* earns its badging with a style and determination that's as balanced as its stance is broad. This is a five-door that takes to the pavement with an attitude that's projected by a bold grille and muscular profile. Styled from every angle: 19-inch Satin Carbon aluminum wheels; sculpted fender flares; and body-color heated mirrors, grille, and door handles hint at the power that comes from the 283-horsepower V6 engine and



available all-wheel drive (AWD). Inside, premium leather-trimmed seats with Red accent stitching and a Uconnect Touch™ 8.4 Media Center radio with large 8.4-inch touch screen indulge everyone who enters. \*Late availability.





**THIS IS WHAT THE LARGEST IN-CLASS<sup>(3)</sup> TOUCH SCREEN LOOKS LIKE.** Journey's interior boasts premium soft-touch materials and a rich instrument panel treatment. When it comes to delivering on all your modern media needs, such as GPS navigation and creature comforts at the touch of a finger, Journey and Uconnect<sup>®</sup> deliver. Intuitive and customizable Uconnect systems include touch screen displays up to 8.4 inches, and steering wheel-mounted controls that operate features like a Bluetooth<sup>®</sup> enabled phone, Voice Command,<sup>(4)</sup> radio, cruise control, and more. Uconnect combines entertainment, hands-free phone, and GPS navigation in one simple-to-use package.



Journey Crew shown with available Black Capri leather-trimmed interior and 9.4-inch Uconnect Touch™ radio.

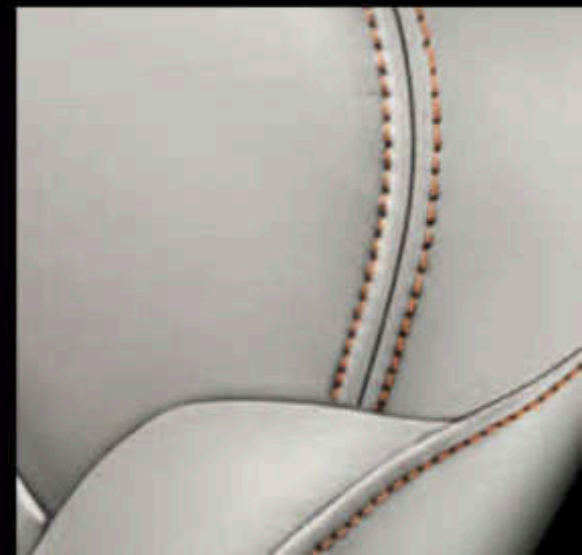


**FIRST-CLASS LOUNGE FOR UP TO SEVEN.** Whether the destination is 1,200 miles away or simply a few blocks from home, every Journey model makes the ride more comfortable with plenty of lounge room and interior flexibility. Journey offers standard five-passenger seating and the available Flexible Seating Group for seven-passenger seating. Rear doors open 90 degrees and available Tilt 'n Slide second-row seats create easy entry to available third-row seats. Standard Keyless Enter 'n Go automatically unlocks the vehicle when the key fob is with you and you pull the door handle. Keyless Enter 'n Go also recognizes when your key fob is in the vehicle and lets you start the engine with one press of the Start button. Journey not only carries passengers in style, but also keeps the things they carry amazingly organized. An easy-to-access center floor console features cup holders, Journey Crew shown with available Pearl Capri leather-trimmed interior.

**// AVAILABLE SEVEN-PASSENGER SEATING // AVAILABLE REAR DVD ENTERTAINMENT SYSTEM**



12-volt power outlets, remote USB port, auxiliary audio input, and out-of-view storage. The available 115-volt/150-watt two-prong power outlet allows passengers to plug in portable game systems or audio hookups. Treat yourself and your passengers to outstanding luxury and best-in-class<sup>TM</sup> versatility. Journey offers available premium leather trim with striking accent stitching, upscale Satin Silver accents, and an available 8.4-inch full-color touch-screen display, and innovative storage options. Opt for the available Rear Seat Video Group and enjoy a DVD player with second-row 9-inch headliner screen, premium speaker system, two sets of wireless headphones, and wireless remote control.







**BEST-IN-CLASS™ STORAGE SYSTEM.** Journey effortlessly carries up to seven passengers and their gear with great ingenuity. Two second-row in-floor storage bins with removable, washable liners each hold up to a dozen 12-oz cans plus ice. Latching lids also make these bins, as well as the covered rear in-floor bin, the perfect place for stowing valuable travel items or sports gear away from prying eyes. The Flip 'n Stow™ fold-flat front-passenger seat flips forward to reveal a large bin ideal for concealing a purse or laptop. With all the seats folded, there's as much as 67.6 cu ft of cargo volume. Keep the second-row seats upright for a generous 39.6 cu ft of cargo volume. Map pockets, center console, and glove box provide even more room to store things you just can't leave home without. *Properly secure all cargo.*



Journey Crew AWD in Brilliant Red Tri-Coat Pearl with available chrome-clad aluminum wheels.

**AN AUTOMOTIVE TRIATHLETE.** From the acceleration of an engine that applies some of the most advanced automotive engine technology to the sure-footedness of the available all-wheel-drive system (AWD), Journey stands apart from the crossover crowd. **3.6-LITER DOHC VARIABLE VALVE TIMING (VVT) PENTASTAR® V6 – NAMED ONE OF WARD'S 10 BEST ENGINES FOR 2011.** Serves up an exceptional blend of high torque, fuel economy (25 highway mpg on FWD models), low emissions, and first-rate noise, vibration, and harshness control. The only thing better than numbers like 283 horsepower and 260 lb-ft of torque are durability-enhancing features that require low maintenance. Paired to a smooth-shifting 6-speed automatic, this 283-horsepower engine delivers best-in-class<sup>TM</sup> V6 driving range. **2.4-LITER DOHC VVT 16-VALVE 4-CYLINDER.** A strong balance of fuel economy (EPA estimated 19 city/26 highway mpg) and power from 173 horses give solid performance to the 2.4-liter World Engine featuring VVT. Standard on AVP and SE models.




**ALL-WHEEL-DRIVE CAPABILITY.** Take the road less traveled whenever the mood – or bad weather – strikes. The confidence-inspiring capability of Journey's available all-wheel-drive system makes easy work of snowy, wet, or ice-laden roads. When the system senses wheel slippage, it immediately responds with an intelligent transfer of power to the rear wheels for a very noticeable uptick in driving performance and enhanced safety and security. Standard Electronic Stability Control<sup>[6]</sup> (ESC) hosts an impressive collection of interconnected systems, including all-speed traction control, Brake Assist, Electronic Roll Mitigation (ERM), Trailer Sway Control<sup>[6]</sup> and a four-wheel antilock brake system (ABS).





**uconnect**  
**SIRIUSXM**  
SATELLITE RADIO


**TECHNOLOGY THAT KNOWS YOU.** Outfit your Journey with Uconnect® to help stay in touch with the people, music, and devices that matter most. It acts as the central location for your most important media – cell phone, Internet, SiriusXM™ Satellite Radio,<sup>[7]</sup> navigation system, and personal devices such as an iPod® or smartphone. The Uconnect user-friendly system allows you to stay connected, informed, entertained, and focused on driving.

 **ENTERTAINMENT.** Manage all of your media. You'll have multiple ways to access audio, including a USB port, iPod control with Voice Command<sup>[4]</sup> and Bluetooth® streaming audio, SiriusXM Satellite Radio<sup>[7]</sup> (first year of service is included), featuring Song/Artist Alerts, Game Alerts, Favorites, and Replay.

 **PHONE.** Talking on the phone while driving has never been easier – or more responsible. Uconnect Phone is the in-vehicle, voice-activated communication system that allows you to pair up to seven Bluetooth compatible phones and then talk virtually hands-free. This system is also clever enough to synchronize with your phone's address book<sup>[4]</sup> – up to 1,000 entries – so you can call whomever you want by simply saying their name.

 **NAVIGATION.** Select destination entries by using voice commands and receive turn-by-turn guidance with voice prompts and visual display. It can also locate nearby restaurants, shopping, hospitals, or points of local interest through an exclusive GPS Navigation from Garmin® with turn-by-turn audible directions and lane guidance. The optional SiriusXM Travel Link™<sup>[7]</sup> adds another level of data access, providing local and national weather forecasts, sports scores and schedules, local movie theater listings, gas prices, and much more.

 **VOICE COMMAND.<sup>[4]</sup>** It simplifies driving by letting you keep your eyes on the road and your hands on the wheel. Use your voice to select any AM/FM radio station, SiriusXM Satellite Radio<sup>[7]</sup> channels, and make calls. This smart system technology can also be trained to better recognize your voice and can understand commands in English, French, and Spanish.

 **WEB.** Put the power of high-speed Internet in your vehicle with Uconnect Web.<sup>[9]</sup> Effortlessly connect any WiFi-enabled device to the Internet at 3G broadband speeds, making your vehicle a mobile Hotspot within a 150-ft range. Passengers can use multiple devices at the same time. There's no need for cell cards or software with this unique Authentic Accessory by Mopar® – connectivity is all done wirelessly. Subscription required. Sold separately.

## UCONNECT SYSTEMS

AVAILABLE	Uconnect Touch™ 8.4N	Uconnect Touch 8.4	Uconnect Touch 4.3S	Uconnect Touch 4.3
Journey R/T	D	S		
Journey Crew	D	S		
Journey SXT	D	D	S	
Journey SE			D	S
Journey AVP				S
<b>SELECTED FEATURES</b>				
LCD Display	8.4" Touch Screen	8.4" Touch Screen	4.3" Touch Screen	4.3" Touch Screen
Optical Drive	CD/DVD/MP3	CD/DVD/MP3	CD/MP3	CD/MP3
Navigation	Garmin			
SiriusXM Travel Link <sup>[7]</sup>	S			
SiriusXM Traffic™ <sup>[7]</sup>	S			
SiriusXM Satellite Radio <sup>[7]</sup>	S	S	S	
Music Storage	SD Card	SD Card		
Audio Jack	S	S	S	S
Hands-Free Voice Command <sup>[4]</sup> of Phone, Radio, Players	D	D	D	D
Bluetooth Streaming Audio	D	D	D	
USB Port for Digital Media Storage/Players (iPod)	S	S	S	S

S = Standard D = Optional

**SiriusXM  
TRAVEL LINK™**

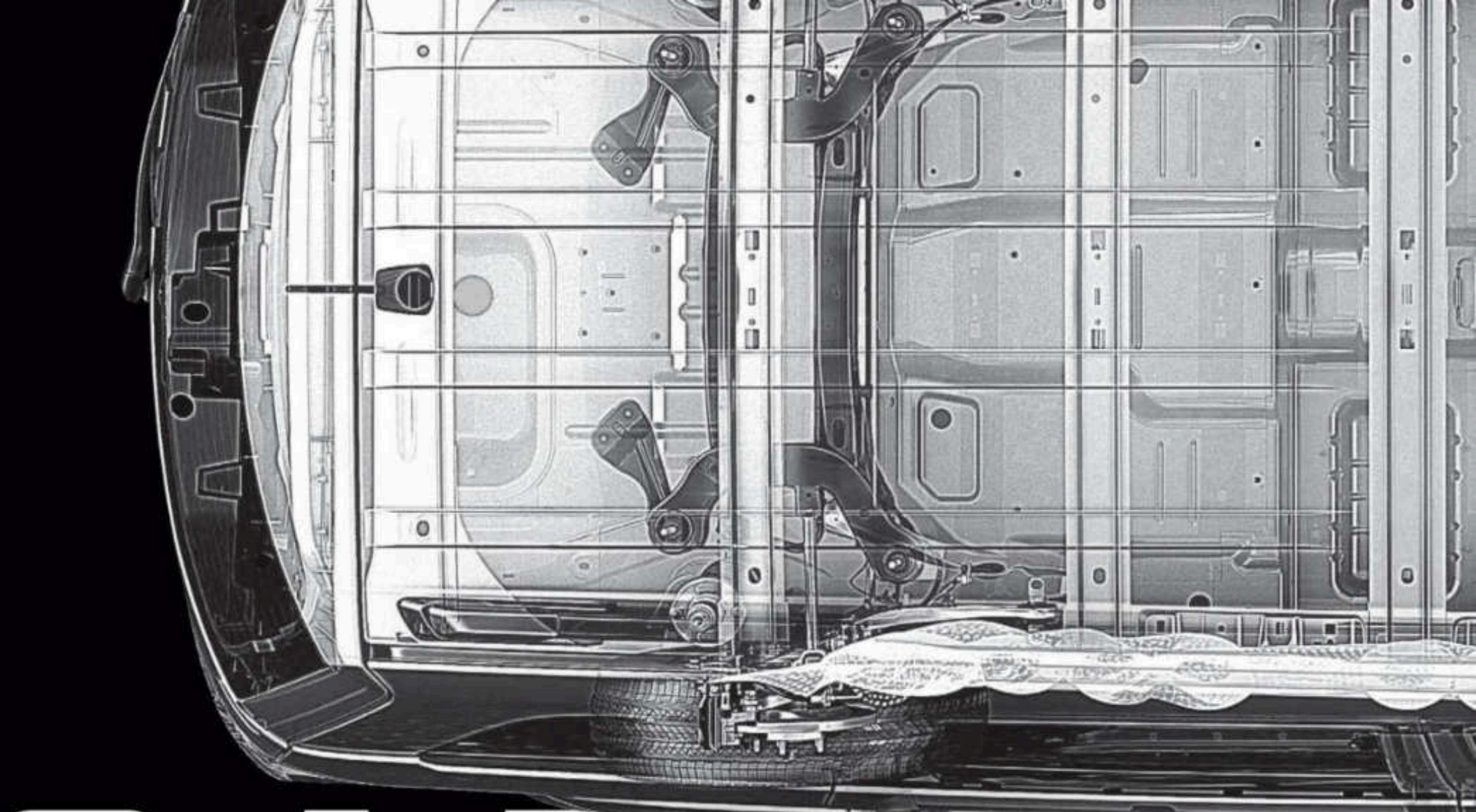
Brings a wealth of useful information to your fingertips, including national weather forecasts, fuel prices for local gas stations, in-game and final sports scores, weekly sports schedules, local movie theater listings, and even local ski slope conditions. Subscription required after one-year included service.

**SiriusXM  
TRAFFIC™**

Don't drive through traffic, drive around it. SiriusXM Traffic delivers comprehensive traffic information directly to your vehicle. This includes continuously updated information on traffic speed and flow, accidents, construction and road closures.

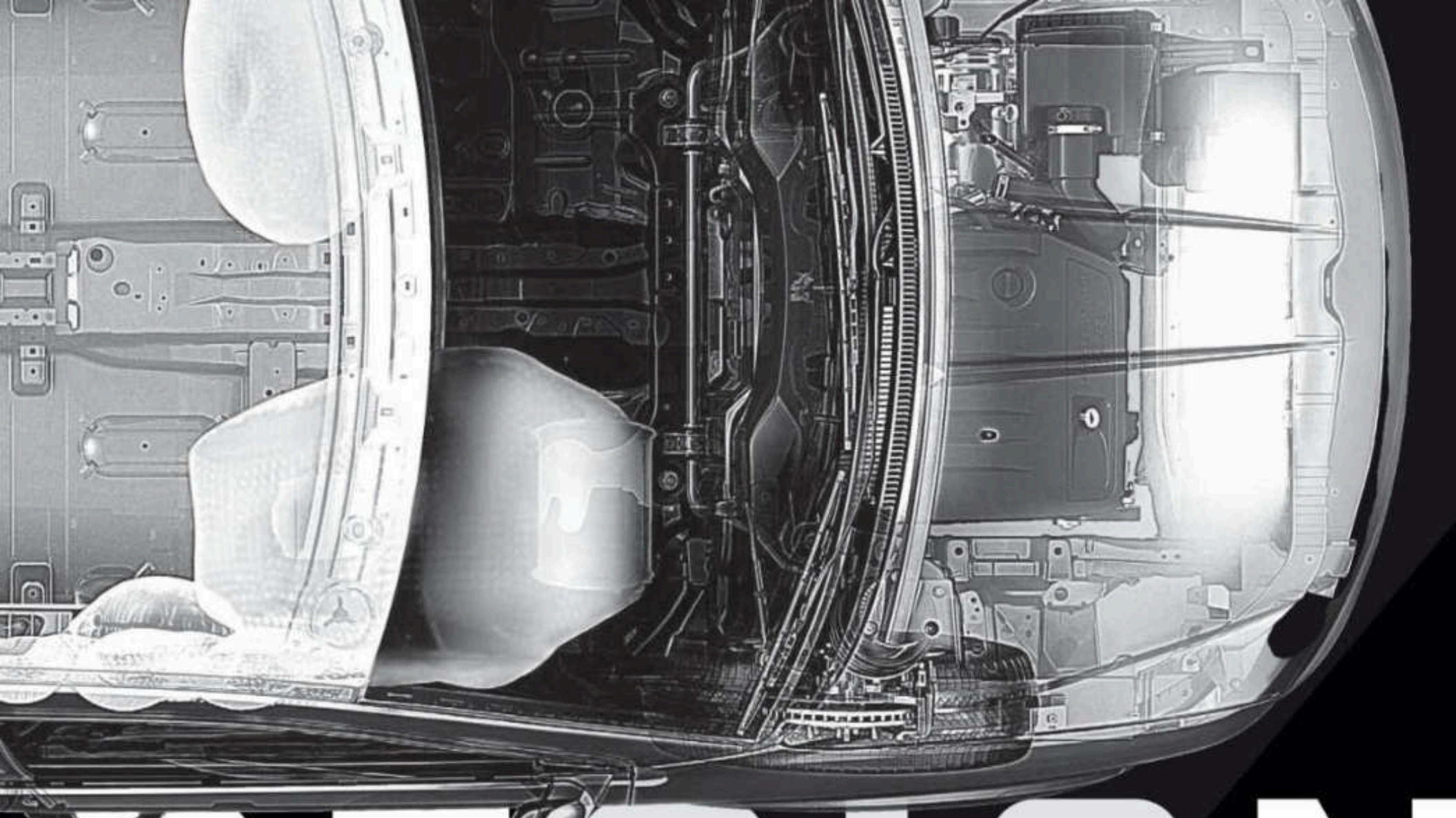


Join fellow Dodge enthusiasts and tell your story by posting comments, participating in discussions, and sharing your photos and videos. Join our community on Facebook, follow us on Twitter, and check us out on YouTube.



# SAFETY.

**DODGE JOURNEY.** Systems like crush zones and safety-cage construction work together to absorb or direct impact energy away from the passenger compartment in the unfortunate event of an accident. For children who have outgrown aftermarket child seats, Journey offers dual integrated child booster seats.<sup>[1]</sup> **ELECTRONIC STABILITY CONTROL (ESC).**<sup>[2]</sup> In adverse conditions, the ESC – which includes all-speed traction control, Brake Assist, Electronic Roll Mitigation, and Trailer Sway Control<sup>[3]</sup> – helps the driver maintain vehicle directional stability and limits oversteering or understeering. **ANTILOCK BRAKE SYSTEM (ABS).** Standard four-wheel antilock disc brakes sense and prevent wheel lockup, offering improved steering control under extreme braking and/or slippery conditions. **SEVEN STANDARD AIR BAGS.**<sup>[4]</sup> All Journey models feature standard advanced multistage driver and front-passenger air bags,<sup>[5]</sup> supplemental side-curtain air bags<sup>[6]</sup> for all three rows, a driver's inflatable knee blocker air bag,<sup>[7]</sup> and supplemental driver and front-passenger seat side-mounted air bags.<sup>[8]</sup> **TIRE PRESSURE MONITORING SYSTEM.** A warning system in the instrument cluster alerts the driver to tires with "high" or "low" displays for individual tire pressures. **SENTRY KEY.**<sup>®</sup> This immobilizer system prevents unauthorized vehicle operation by disabling the engine. Operation is automatic, regardless of whether the vehicle is locked or unlocked. **ALL-WHEEL DRIVE (AWD).** An available system that automatically detects wheel-slip and sends additional power to the wheels with the most traction.



# DESIGN

JOURNEY HAS *OVER 50* STANDARD AND AVAILABLE SAFETY AND SECURITY FEATURES AND IS A 2011 INSURANCE INSTITUTE FOR HIGHWAY SAFETY (IIHS) TOP SAFETY PICK.





**ADD YOUR FINISHING TOUCH.** Mopar<sub>®</sub> inspires vehicle owners with innovative parts and accessories – all made to spec for your Journey. This is what Mopar delivers, along with expert, caring service. Mopar technicians are the masters of your make and model, with access to the tools and diagnostic equipment that help get the job done efficiently. Choose Authentic Mopar parts and service, and you'll drive away with peace of mind. Find out more at [mopar.com](http://mopar.com)

**SPORT //** No matter what adventure you seek, you'll want to add to the sport of it all with durable and convenient Mopar Roof- and Hitch-Mount Carriers.

**INNOVATION //** From Uconnect Web<sup>™</sup> to Ambient Interior Light Kits, Mopar technology can enhance and expand your driving experience.

**PROTECTION //** Safeguard your vehicle with smart accessories like Door Sill Guards and Slush Mats – made precisely for the protection and security of your ride.

**UTILITY //** Bring on the goods and carry them along for the ride, safely and securely. Mopar Accessories work right alongside you, helping to get the job done.

## AUTHENTIC DODGE ACCESSORIES

Journey SE In White shown with Authentic Dodge Accessories by Mopar including 19-Inch Cast-Aluminum Wheels, Roof Rack Kit, Chrome Bodyside Moldings, and Chrome Fuel Filler Door. See your dealer for a brochure of the full line of Authentic Accessories for your Dodge Journey.



properly secure all cargo.

## JOURNEY AVP/SE



### POWERTRAIN

2.4L DDHC 16-valve I-4 dual VVT engine, 4-speed automatic transmission  
173 horsepower

### AVP FEATURES

#### SELECTED JOURNEY AVP EQUIPMENT:

- Electronic Stability Control (ESC)<sup>[4]</sup> with Electronic Roll Mitigation, Trailer Sway Control,<sup>[4]</sup> Brake Assist, and all-speed traction control
- Advanced multistage front, side-curtain, and front-seat side air bags<sup>[11]</sup>
- Active front head restraints<sup>[11]</sup>
- Keyless Enter 'n Go
- Uconnect Touch™ 4.3 Media Center AM/FM/CD with six speakers
- Tilt/telescoping steering wheel with integrated audio and cruise controls
- Air conditioning with Dual-Zone Manual Temperature Control
- Body-color door handles
- Premium cloth seating
- Power locks and windows, power heated mirrors
- 16-inch wheel covers
- Remote USB port and audio jack
- Tire Pressure Monitoring Display
- Electronic Vehicle Information Center (EVIC) with color display

### SE FEATURES

#### DIFFERENCES/UPGRADES VS. AVP:

- LED taillamps
- Deep-tint sunscreen glass
- Black side roof rails

## JOURNEY SXT



### POWERTRAIN

3.6L Pentastar® VVT V6 engine, 6-speed automatic transmission with AutoStick  
283 horsepower

### FEATURES

#### DIFFERENCES/UPGRADES VS. SE:

- Dodge performance front /rear body-color fascias
- Fog lamps
- 17-inch aluminum wheels
- Foldaway, power heated mirrors (body-color)
- Front and rear floor mats
- Uconnect Touch 4.3S CD/MP3/SiriusXM™ Satellite Radio<sup>[11]</sup> with one-year subscription
- Dual bright exhaust tips

Shown with optional 8.4-inch screen.



## JOURNEY CREW



### POWERTRAIN

3.6L Pentastar® VVT V6 engine, 6-speed automatic transmission with AutoStick  
283 horsepower

### FEATURES

#### DIFFERENCES/UPGRADES VS. SXT:

- 19-inch aluminum wheels
- Bright side roof rails
- Bright door handles
- Uconnect® Voice Command<sup>(4)</sup> with Bluetooth<sup>(5)</sup>
- Six premium speakers with subwoofer
- Six-way power driver's seat with four-way lumbar adjuster
- Front-passenger fold-flat seat with in-seat storage
- Leather-wrapped steering wheel and shift knob
- One-touch express up/down front windows
- Remote start
- Premium headliner with front and rear aimable LED lamps, trip computer with temperature and compass, sun visors with illuminated mirrors
- Air conditioning with Dual-Zone Automatic Temperature Control (ATC)
- 115-volt auxiliary power outlet
- Security alarm
- Automatic headlamps
- Portable, rechargeable trouble light

### AVAILABLE OPTIONS:

- Flexible Seating Group [7-passenger seating] (all models)
- Second-row seat with two integrated child booster seats<sup>(7)</sup> (all models)
- Uconnect Voice Command<sup>(4)</sup> with Bluetooth (AVP, SE, SXT)
- Uconnect Touch™ 4.3S CD/MP3/SiriusXM™ Satellite Radio<sup>(7)</sup> includes one-year subscription (SE)
- Leather-trimmed seating with heated front seats (Crew)
- Trailer Tow Prep Group (Crew, R/T)

Shown with optional leather.



## JOURNEY R/T



### POWERTRAIN

3.6L Pentastar VVT V6 engine, 6-speed automatic transmission with AutoStick  
283 horsepower

### FEATURES

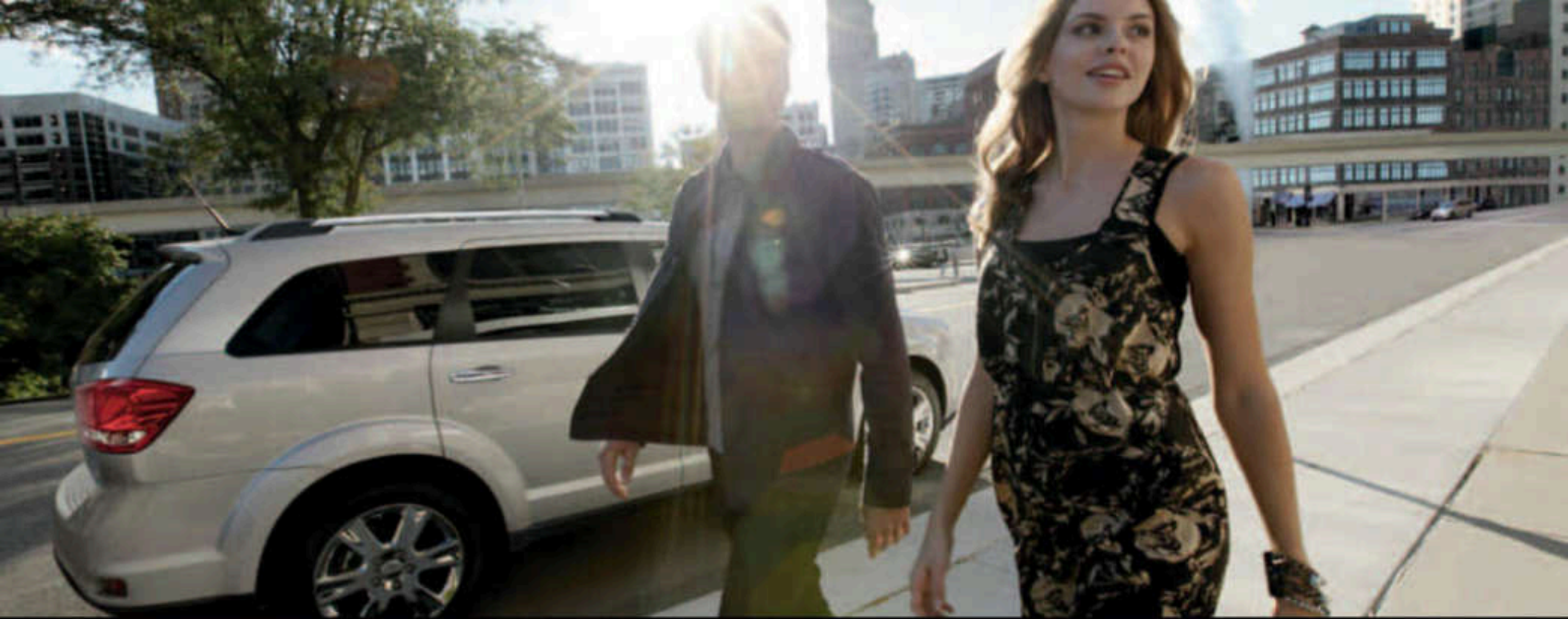
#### DIFFERENCES/UPGRADES VS. CREW:

- 19-inch Satin Carbon aluminum wheels
- Monochromatic exterior appearance including body-color door handles and body-color grille
- Black leather-trimmed seats with Red stitching
- R/T badge on liftgate

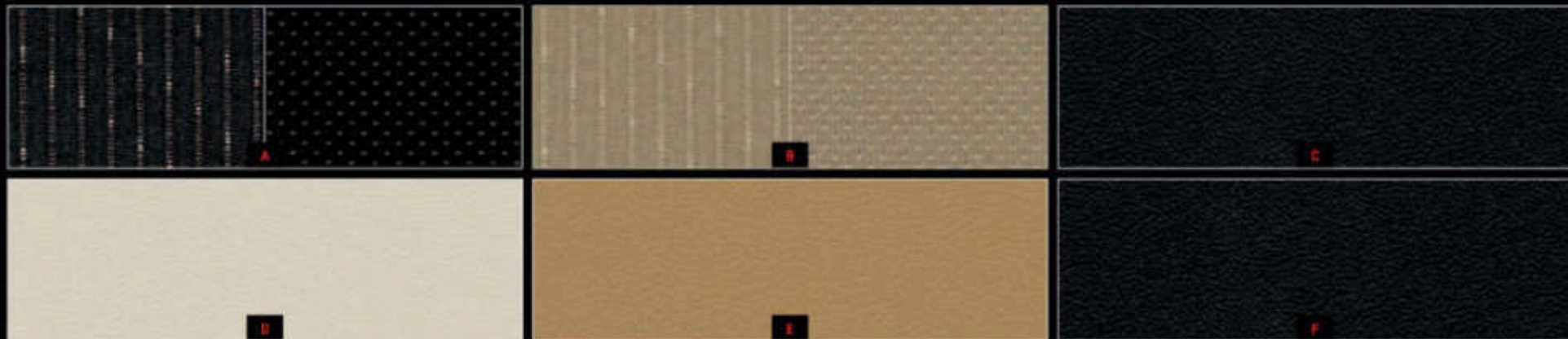
- Popular Equipment Group (SE, SXT)
- Premium Group (SE)
- Smoker's Group (all models)
- Power sunroof (Crew, R/T)
- Heated front seats (SXT, Crew)
- Black side roof rails (R/T)
- Engine block heater (all models)
- 19-inch Satin Silver wheels (SXT)

- 19-inch chrome-clad aluminum wheels (Crew)
- Rear Seat Video Group with 9-inch screen (Crew, R/T) (late availability)
- Sound Group (SXT)
- Navigation Group (Crew, R/T)
- All-wheel drive (SXT, Crew, R/T)
- Driver Convenience Group (Crew, R/T)
- Safe & Sound Group (SXT)





## JOURNEY FABRICS



### JOURNEY AVP, SE, AND SXT FABRICS //

[A] Strobe Cloth with Pulse Cloth Bolsters – Black (standard) [B] Strobe Cloth with Pulse Cloth Bolsters – Light Frost Beige (standard)

### JOURNEY CREW FABRICS //

[A] Strobe Cloth with Pulse Cloth Bolsters – Black (standard) [B] Strobe Cloth with Pulse Cloth Bolsters – Light Frost Beige (standard)

[C] Capri Leather trim – Black (available) [D] Capri Leather trim – Pearl (available) [E] Capri Leather trim – Tan (available)

### JOURNEY R/T FABRICS //

[F] Leather trim – Black with Red stitching (standard)



## DODGE.COM/LIFE

Check out an extensive line of gifts and gear for the Dodge enthusiast. From authentic apparel to die-cast replica cars for the collector, as well as electronics and office supplies, all lifestyle items are as bold as your Dodge vehicle. Refer to [dodge.com/life](http://dodge.com/life) for current product availability.

## JOURNEY COLORS

WHITE

BRIGHT SILVER METALLIC

BRILLIANT BLACK CRYSTAL PEARL

COPPERHEAD PEARL

BRILLIANT RED TRI-COAT PEARL

STORM GRAY PEARL

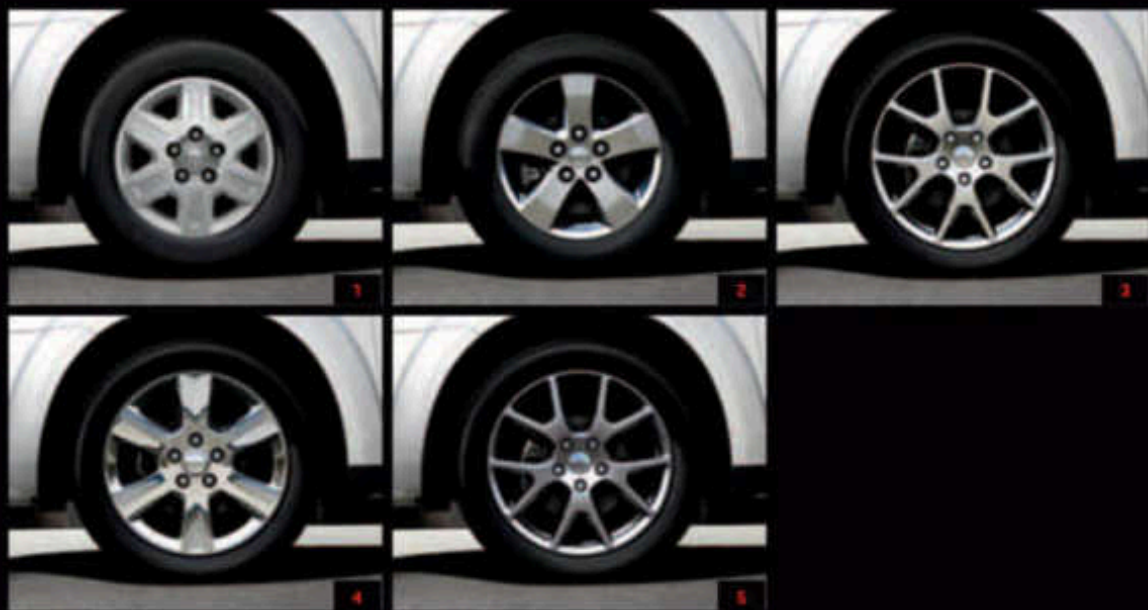
BLUE PEARL

PEARL WHITE TRI-COAT

## JOURNEY DIMENSIONS

LENGTH: 192.4"; HEIGHT: 66.6"; WIDTH: 72.2"; WHEELBASE: 113.8"; TRACK [FRONT/REAR]: 61.8"/62.3"

## JOURNEY WHEELS



### JOURNEY AVP //

[1] 16-inch wheel covers [standard]

### JOURNEY SE //

[1] 16-inch wheel covers [standard]

[2] 17-inch aluminum [available]

### JOURNEY SXT //

[2] 17-inch aluminum [standard]

[3] 19-inch Satin Silver aluminum [available]

### JOURNEY CREW //

[3] 19-inch Satin Silver aluminum [standard]

[4] 19-inch chrome-clad cast aluminum [available]

### JOURNEY R/T //

[5] 19-inch Satin Carbon cast aluminum [standard]



**5-YEAR/100,000-MILE  
POWERTRAIN WARRANTY**

**DODGE LIFE**

**Service  
Contracts**



**Uconnect**

**SiriusXM  
SATELLITE RADIO**

**AUTOMOBILITY**



<sup>1</sup>Based on the latest competitive information and the Ward's Middle Class Utility class. <sup>2</sup>Based on the latest available competitive information and Ward's Middle Class Utility class. MSRP excludes destination, tax, title, and license fees. <sup>3</sup>Based on latest available competitive information, MSRP excludes destination, tax, title, and license fees. <sup>4</sup>Requires Uconnect Phone. <sup>5</sup>Based on the latest model year information on vehicles in the Ward's Middle Class/Utility Vehicle segment. Excludes other vehicles built by Chrysler Group LLC. <sup>6</sup>No system, no matter how sophisticated, can repeat the laws of physics or overcome careless driving actions. Performance is limited by available traction, which snow, ice, and other conditions can affect. When the ESC warning lamp in the speedometer flashes, the driver needs to use less throttle and adapt speed and driving behavior to prevailing road conditions. Always drive carefully, consistent with conditions. Always wear your seat belt. <sup>7</sup>Sirius services require subscriptions, sold separately after 12-month trial included with vehicle purchase/lease. Subscriptions governed by SiriusXM Customer Agreement at [siriusxm.com](http://siriusxm.com). If you decide to continue your SiriusXM service at the end of your complimentary trial, the plan you choose will automatically renew and bill at their current rates until you call SiriusXM at 1-800-635-2343 to cancel. SiriusXM U.S. satellite service available only to those at least 18 years of age in the 48 contiguous United States and D.C., with Sirius also available in PR. Go to [www.siriusxm.com/travel](http://www.siriusxm.com/travel) for available coverage. © 2011 SiriusXM Radio Inc. <sup>8</sup>Phone must support Bluetooth Phone Book Access Profile (PBAF). <sup>9</sup>Subscription required. The Uconnect Web feature is not intended for use by the driver while the vehicle is in motion. Always drive carefully. <sup>10</sup>For children 48-85 lb and up to 4'3". <sup>11</sup>The Advanced Front Air Bags in this vehicle are certified to the new federal regulations for advanced air bags. Children 12 years old and younger should always ride buckled up in a rear seat. Infants in rear-facing child restraints should never ride in the front seat of a vehicle with a passenger front air bag. All occupants should always wear their lap and shoulder belts properly. <sup>12</sup>Always sit properly with the head restraint properly adjusted. Never place anything in front of the head restraint.

**5-YEAR/100,000-MILE POWERTRAIN LIMITED WARRANTY.** Transferable. See your dealer for complete details and a copy of the 5-Year/100,000-Mile Powertrain Limited Warranty. **3/36 BASIC LIMITED WARRANTY.** Dodge vehicles are covered by a Chrysler Group LLC 3-Year/36,000-Mile Basic Limited Warranty. See your dealer for a copy of this limited warranty. Excludes normal maintenance and wear items. **AUTOMOBILITY.** Chrysler Group LLC's Automobility program provides aftermarket reimbursement incentives on adaptive vehicle uplift equipment in order to help provide safe and reliable vehicle modifications to enhance accessibility for all people. For more information, call (800) 255-5877. Chrysler has a vested interest in your satisfaction with your new vehicle. **CHRYSLER SERVICE CONTRACTS** offer extended service plans to help ensure that you'll enjoy your vehicle for many years down the road - for just pennies a day. For more information, see your Dodge dealer, call (800) 442-2466, or visit [dodge.com/esc](http://dodge.com/esc). **AUTHENTIC DODGE ACCESSORIES BY MOPAR** are designed specifically for your Dodge vehicle for exceptional fit, finish, and performance. Visit your dealership or [mopar.com](http://mopar.com). With **UCONNECT**,<sup>®</sup> you're always connected - to people, places, music, movies, and the internet. **SiriusXM<sup>™</sup> SATELLITE RADIO** Get over 130 channels, including commercial-free music plus the best sports, news, talk, comedy, and entertainment. Welcome to the world of satellite radio. Factory-installed SiriusXM Satellite Radio includes a one-year subscription. For more information, go to [siriusxm.com](http://siriusxm.com). **DODGE LIFE** is a handpicked collection of items bearing the powerful Dodge name - from Motorsports apparel and collectible die-cast models to the hottest items for work and weekend fun. It's all found at [dodge.com/life](http://dodge.com/life). **DODGE<sup>®</sup> MASTERCARD<sup>®</sup>** Earn 3 points on qualifying purchases made at Chrysler Group LLC dealerships. 2 points per \$1 on qualifying travel purchases and 1 point per \$1 on qualifying purchases everywhere else with the new Dodge MasterCard. Points may be redeemed at your local dealership for cash off your new or used vehicle, accessories, parts or service - including your next oil change. Or choose from hundreds of other rewards, including travel, cash back to your account, merchandise, or gift cards.\* For more information or to apply, visit [DodgeCard.com](http://DodgeCard.com). \*Complete details, including restrictions, limitations, and exclusions, will be included when you become a Cardmember. This card is issued by First Bankcard, a division of First National Bank of Omaha, pursuant to a license by MasterCard International Incorporated.

About this catalog: Since the time of printing, some of the information you'll find in this catalog may have been updated. Ask your dealer for details. Some of the equipment shown or described throughout this catalog is available at extra cost. Specifications, descriptions, illustrative materials, and all competitive comparisons contained herein are as accurate as known at the time this publication was approved for printing. Chrysler Group LLC reserves the right to discontinue models at any time or change specifications without notice and without incurring obligation. All options are required in combination with other options. For the price of the model with the equipment you desire, or verification of specifications contained here, see your Dodge dealer. Dodge, Journey, Mopar, Uconnect, Pentastar, SXT, R/T, and SENTRY Key are registered trademarks and Big 'n' Stew, Uconnect Touch, and Tilt 'n' Slide are trademarks of Chrysler Group LLC. Sirius, XM, and all related marks and logos are trademarks of SiriusXM Radio Inc. and its subsidiaries. Bluetooth is a registered trademark of Bluetooth SIG, Inc. HomeLink is a registered trademark owned by Johnson Controls, Inc. All rights reserved. iPad is a registered trademark of Apple Inc. All rights reserved. Garmin and the Garmin logo are registered trademarks of Garmin Ltd. or its subsidiaries and are registered in one or more countries, including the U.S. Facebook is a registered trademark of Facebook, Inc. Twitter is a service mark of Twitter Inc. YouTube is a trademark of Google Inc. MasterCard is a registered trademark of MasterCard International Incorporated. © 2011 Chrysler Group LLC. All rights reserved.

**DODGE.COM/JOURNEY**

Journey Crew shown in Bright Silver Metallic.





[DODGE.COM](http://DODGE.COM) // 800-4ADODGE

DODGE IS A REGISTERED TRADEMARK OF CHRYSLER GROUP LLC.

**DODGE** 