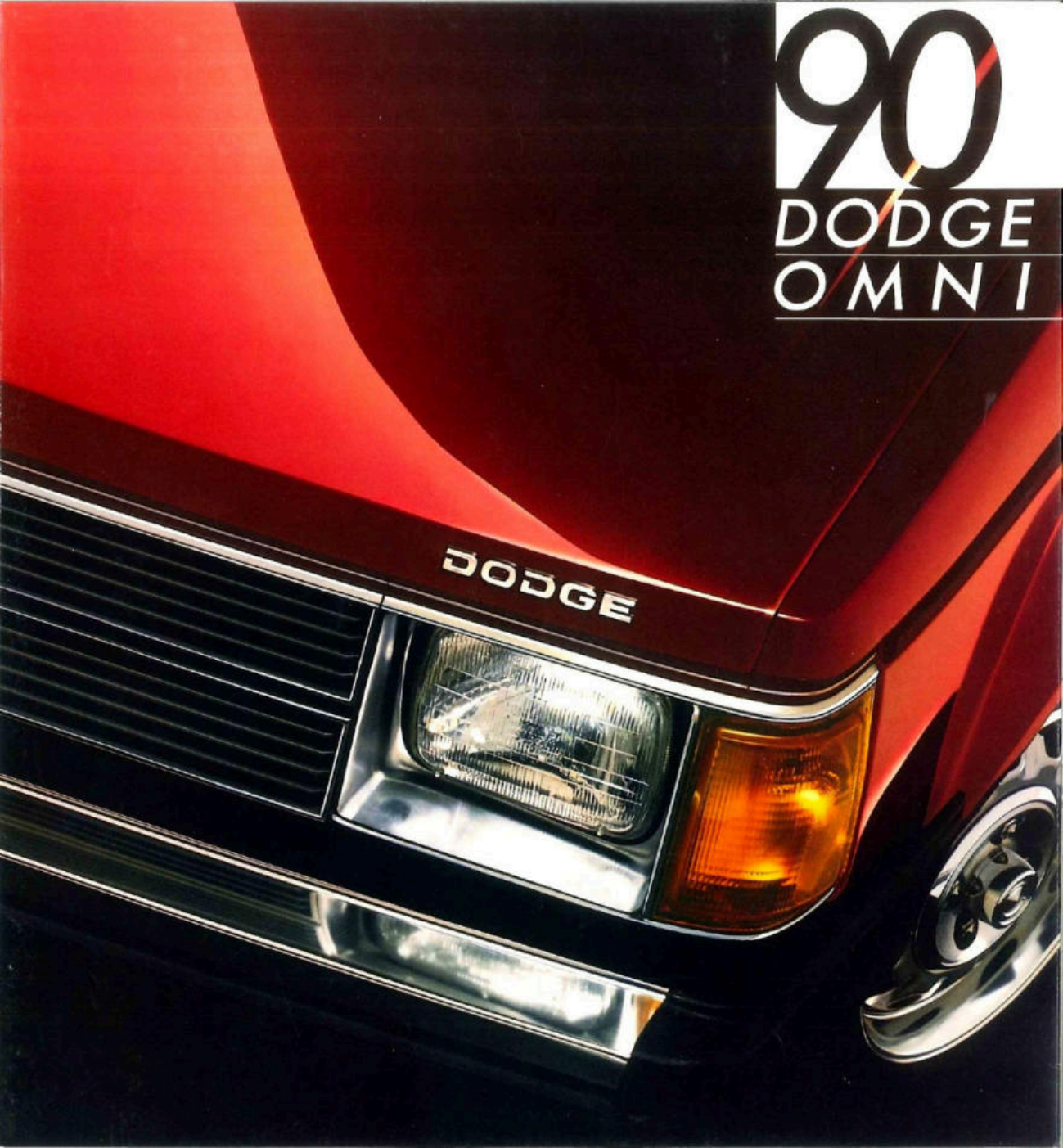
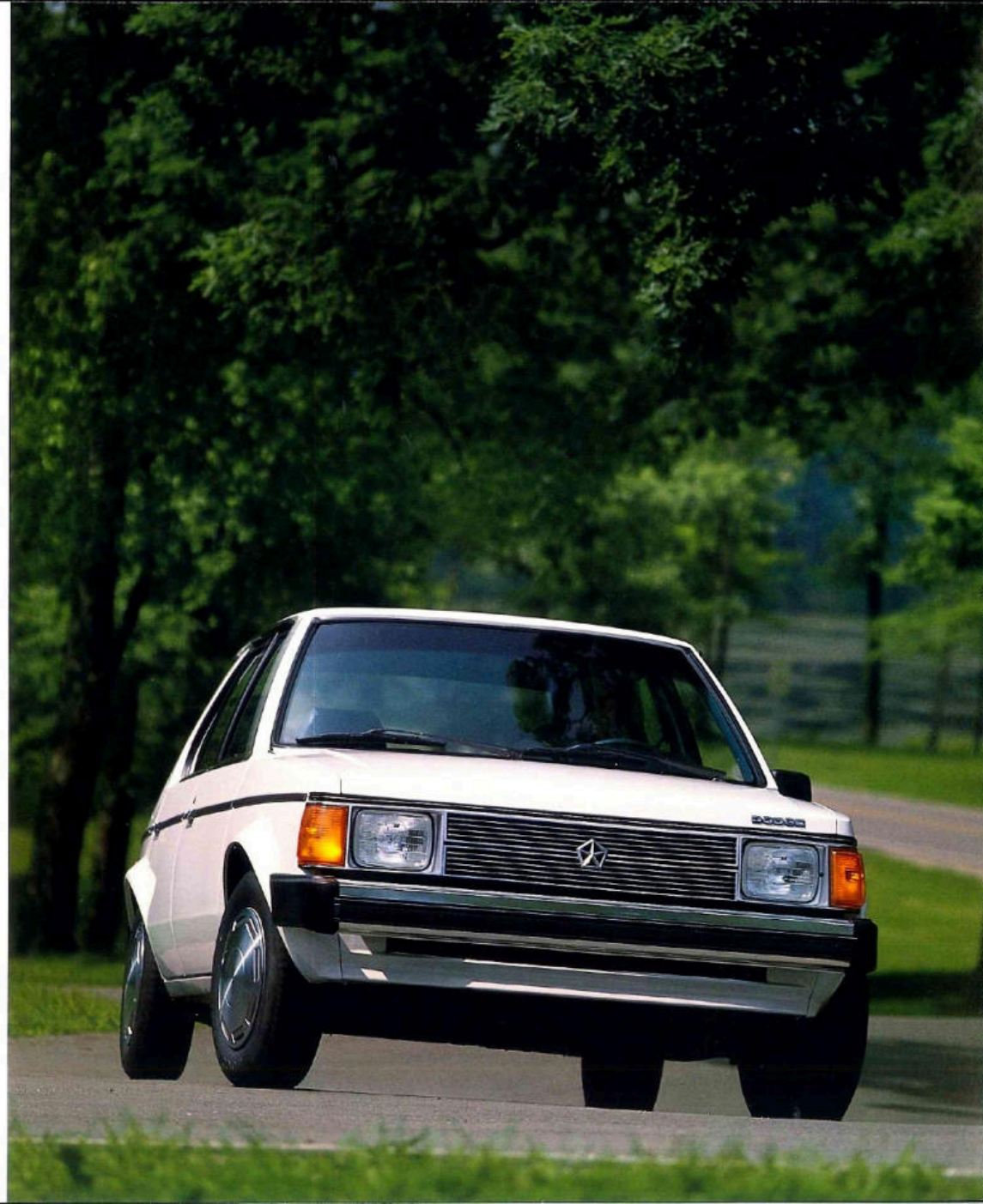


90
DODGE
OMNI

DODGE





Front-wheel drive

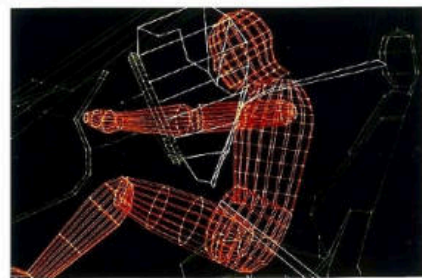
Dodge Omni.

The smart way to lower the cost of living it up!

Looking for a reliable car that's fun to drive? A subcompact that's still responsive to the needs of busy singles and families? A lively front-wheel

drive car with a hardy 2.2-liter SOHC EFI engine ready to take on any road and come out ahead in economical operation? A dependable performer with electronic ignition?

Make way for Dodge Omni (shown below in Light Spectrum Blue Clear Coat) designed and built to deliver your money's worth and more. Power-assisted front disc, rear drum brakes. A supplemental restraint system with air-bag protection built into the steering wheel. An even 33 cubic feet of cargo space with rear seatback folded. And the confidence-building 7/70 Power Train Limited Warranty.



The Allstate SAFETY LEADERSHIP AWARD was presented to Chrysler Corporation in recognition of its being the first American carmaker to provide driver-side air bags as standard equipment on all domestic-built 1990 Dodge passenger cars.

Some of the equipment shown or described throughout this catalog is available at extra cost.

About this catalog: Since the time of printing, some of the information you'll find in this catalog may have been updated. Ask your dealer for details.



Dodge Omni. A value-packed success story.

Dodge Omni is a leader by design. A beautiful blend of responsive performance, economy, comfort and dependability. And only Omni gives you such a generous helping of value. It's loaded with many new standard features: A padded instrument panel with Rallye gauge cluster, featuring a 100-mph speedometer, tachometer, voltmeter and water temperature gauge, four-spoke sport steering wheel with driver-side air bag and rear outboard lap and shoulder belts for optimum passenger safety. More little things that mean a lot include redesigned climate control ducts for improved heating and/or cooling comfort, and new forward console that conveniently keeps audio system controls within easy reach. Its well-appointed interior, with reclining front bucket seats, has room for five passengers. It's shown below in Twilight Blue. Omni's standard equipment list goes on and on. A convenient luggage compartment light, a rear security shelf panel, intermittent windshield wipers and a rear window wiper/washer. And there's lots more. Dodge Omni. Roomy. Sensible and very affordable. A great American success story that's well worth considering.



All product illustrations and specifications are based upon current information at the time of publication approval. Although illustrations are believed correct, accuracy cannot be guaranteed. Chrysler Motors reserves the right to make changes from time-to-time, without notice or obligation, in prices, specifications, colors and materials, and to change or discontinue models. See your dealer for the latest information.

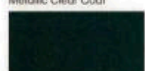
Exterior Colors



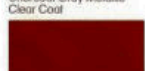
Light Spectrum Blue Metallic Clear Coat



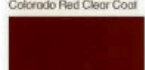
Ice Blue Metallic Clear Coat



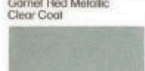
Charcoal Gray Metallic Clear Coat



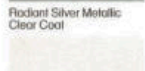
Colorado Red Clear Coat



Garnet Red Metallic Clear Coat



Radiant Silver Metallic Clear Coat



Bright White Clear Coat

Due to printing limitations, the colors shown are very slight from actual hues. See your Dodge dealer for accurate color chips. Clear Coat finish is standard on every 1990 passenger car built by Chrysler Motors.



MOPAR parts are engineered by Chrysler Motors for use in your New Dodge Omni. When replacement is necessary, be sure to specify MOPAR parts. Used by professional mechanics all over the world.

Dodge and MOPAR are registered trademarks, and Omni is a trademark of Chrysler Motors Corporation.

Standard Equipment

Dodge Omni
 Alternator—90-ampere
 Battery—430-ampere; maintenance-free
 Brakes—Front disc, rear drum; power-assisted
 Bumpers—Front and rear; bright; black protective rub strips; black bumper end extensions
 Carpet—Passenger compartment
 Center Console—Shift lever, rear wiper/washer switch, lighted ash tray, and utility box
 Corrosion Protection—Lower body protective urethane coating; extensive use of galvanized steel
 Exhaust System—All Stainless Pentasteeel
 Headlights—Halogen
 Headliner—Cloth-covered
 Heater and Defroster—Upper level ventilation
 Instrument Cluster—Rallye; odometer; speedometer (100 mph, 160 kph); tachometer; trip odometer; gauges for electrical system voltage, engine coolant temperature, engine oil pressure, fuel level; warning lights for brake system, low engine oil pressure
 Instrument Panel—Padded
 Light—Luggage compartment
 Light—Glove box
 Mat—Cargo area floor; black
 Mirror—Exterior left remote control; black
 Mirror—Interior passenger side view vanity
 Mirror—Interior rearview; day/night
 Moldings—Body-side, luggage, belt and windshield
 Multifunction Control Lever—Mounted on steering column; includes controls for turn signals with lane-change feature, deluxe intermittent windshield wipers/washers, headlight dimmer
 Seat—Front: reclining bucket
 Seat—Rear: fold-down
 Seat Belts—Deluxe, with tension relievers and automatic retractors for front and rear outboard seats, lap belt for rear center seat; color-keyed
 Shelf Panel—Rear; security folding-type
 Steering—Manual; rack-and-pinion
 Steering Wheel—Sport four-spoke; color-keyed with air bag
 Suspension—Front: Iso-Shock, coil springs with anti-sway bar; rear: trailing arm, semi-independent with shock absorbers and coil springs
 Tire—Spare: P145/75D13 limited service
 Tires—P145/80R13 All-season steel-belted radial black sidewall (set of four)
 Wheel Covers—Deluxe 13-inch (set of four)
 Wiper/Washer—Rear window

Standard Safety Features

- Antilock trunk lock • Brake fluid pressure loss warning light (also serves as indicator when parking brake is applied) • Combination lap-shoulder belts for the front and rear outboard seats, lap belt for rear center seat • Dual braking system with separate brake fluid reservoirs in the master cylinder • Energy-absorbing front seatbacks • Energy-absorbing instrument panel and sun visors • Energy-absorbing steering column and steering wheel • Fade-resistant front vented disc brakes • Front seat head restraints • Hazard-warning flasher system • Ignition and steering column lock • Impact-actuated fuel supply shut-down relay • Key-kill ignition warning • Luggage-air warning light • Safety-Rim wheels • Seat belt reminder system • Seatback safety latches • Side door beams • Supplemental center high-mounted stoplight • Driver-side air bag and knee bolsters

Dimensions, Weight, and Capacity

OMNI:
 Length: 163.2"; Width: 66.8"; Height: 53.0"; Wheelbase: 99.1"; Turning Diameter (curb-to-curb): 35.5' left, 37.5' right; Curb Weight (est): 2,299 lb; Cargo Capacity: with rear seatback raised, 15.6 cu ft; with rear seatback lowered: 33.0⁺ cu ft; Passenger Capacity: 5; Fuel Capacity: 13 gal.
 *With second seats. **With Transaxle Discount Package, 36.6

Power Train Chart¹

Type	Displacement	Bore and Stroke	Compression Ratio	Horsepower & Torque		Transaxle Availability
				SAE Net @ RPM	@ RPM	
Std: 4-cylinder SOHC EFI	2.2-liter (135 CID)	3.4H" x 3.62"	9.5:1	93 hp @ 4,800	122 lb-ft @ 3,200	Std: close-ratio 5-speed overdrive manual (2.55 OTGR) Opt: close-ratio 3-speed automatic (2.78 OTGR)

OTGR—Overall top gear ratio.

¹Emissions controls and testing required of extra cost on all vehicles registered in California; not available otherwise.

Dodge Omni

Color Combinations	Omni	Interior Trim
Exterior Paint Color		
Garnet Red Clear Coat	PR9	x Crimson Red
Colorado Red Clear Coat	PEH	x Crimson Red Silver
U. Spectrum Blue Clear Coat	PB2	x Twilight Blue
Ice Blue Clear Coat	PB1	x Twilight Blue
Charcoal Clear Coat	PA7	x Silver
Radiant Silver Clear Coat	PA1	x Crimson Red Silver
Bright White Clear Coat	PW7	x Crimson Red Twilight Blue

Optional Packages

Certain models, packages, and options are subject to specific restrictions, requirements, or late availability. See your dealer for latest ordering information.

BASIC PACKAGE

Automatic transaxle with lockup torque converter and power-assisted steering.

MANUAL TRANSAXLE DISCOUNT PACKAGE

AM stereo²/FM stereo radio; electronically tuned, with Dynamic Noise Reduction¹ and integral digital clock (can be upgraded); cargo compartment dress-up including carpet for cargo area floor, lower deck trim panel; high-back cloth with vinyl trim sport bucket seats; power-assisted steering; dual outside remote mirrors; 13" Rallye wheels with bright trim rings, center hubs, and lug nuts (set of 4); front and rear floor mats.

AUTOMATIC TRANSAXLE DISCOUNT PACKAGE

AM stereo²/FM stereo radio with Dynamic Noise Reduction¹ and integral digital clock (can be upgraded); automatic transaxle; cargo compartment dress-up including carpet for cargo floor, lower deck trim panel; high-back cloth with vinyl trim sport bucket seats; power-assisted steering; dual outside remote mirrors; 13" Rallye wheels with bright trim rings, center hubs, and lug nuts (set of 4); front and rear floor mats.

OPTIONAL EQUIPMENT

- Air conditioning (requires conventional spare tire and tinted glass) • Manual or Automatic Transaxle Discount Package required • Electric rear window defroster • Emissions controls and testing (required at extra cost on all vehicles registered in California; not available otherwise) • AM stereo²/FM stereo radio; electronically tuned, with Dynamic Noise Reduction¹; cassette tape player with automatic reverse and Chrysler two-speaker system; integral digital clock (Manual or Automatic Transaxle Discount Package required) • Conventional spare tire • Tinted glass • White sidewall tires.

¹Some AM stereo broadcasting may not be compatible with this radio.

Dynamic Noise Reduction (DNR) is a trademark of National Semiconductor Corporation.

²There are special engine cooling requirements for field-installed air conditioning. Follow to follow these requirements may voidable warranty. See your dealer for details.

³Required on all vehicles registered in the state of New York.

Form No. 91-205-250 8/86(2006) L10 in U.S.A.

Interior Trim

Standard on Omni. Emboss cloth with vinyl trim low-back seats. Available in Twilight Blue, Crimson Red, Silver.



Optional on Omni.

Gibson cloth with vinyl trim high-back bucket seats. Available in Twilight Blue, Crimson Red, Silver.



7700 Power Train Limited Warranty

Upon expiration of the basic 12-month or 12,000-mile limited warranty, coverage is extended on power train components to seven years or 70,000 miles. A deductible applies. See your dealer for a copy of the warranty.

7100 Anticorrosion Limited Warranty

Your dealer will repair or replace at no charge outer body sheet metal panels found to have developed perforation (rust-through) in normal use up to seven years or 100,000 miles. See your dealer for a copy of the limited warranty.

Optional Service Contract Coverage

Chrysler Motors offers a variety of plans to meet your needs. Plan coverage begins after your vehicle's basic warranty expires. A deductible applies. Allowances for car rental and towing are also included.

Chrysler Credit Financing

Special finance and leasing programs are designed to meet the needs of today's automotive buyer. They include Gold Key Lease, America's Choice Payment Plan, College Graduate Plans, Retail Financing, and more. Ask your salesperson for details.

Consider Leasing

Leasing a new Dodge Omni usually involves a small security deposit and a first month's lease payment. Monthly payments are usually less than financing a new car purchase. Ask your dealer for details.

Chrysler Purchase Assistance Program for the Physically Challenged

Cash reimbursements of up to \$500 are available for qualified adaptive driving devices on 1990 Chrysler Motors cars and trucks. For further information, contact your dealer or the PHYSICALLY CHALLENGED RESOURCE CENTER at 1-800-255-9877.

Buckle Up For Safety.

