

**09**  **RAM** | **1500**  
DODGE



# NEVER BACK DOWN FROM A CHALLENGE.

Take a truck this far, and you start closing in on outright perfection. Introducing the next big leap for pickups — the incredible all-new 2009 Dodge Ram 1500. This is where all-new styling translates into best-in-class\* aerodynamics. Where a class-exclusive\* aerodynamics. Where a class-exclusive\* five-link coil-spring rear suspension means exceptional comfort without compromising payload. Where a redesigned 5.7-liter HEMI® V8 featuring the innovative Multi-Displacement System (MDS) generates more power with greater efficiency.<sup>2</sup> In fact, we met the challenge head on, with an all-new model: 2009 Ram Crew 1500 features class-exclusive\* storage so innovative, it turns the tables on conventional pickups. This is how you Grab Life by the Horns — with the all-new 2009 Dodge Ram 1500.

\*Based on *Automotive News* full-size pickup segmentation.

<sup>2</sup>Based on manufacturer's preliminary fuel economy estimates of 14 city to 20 highway mpg with MDS using EPA methodology. Results depend on driving habits and conditions.

**GRAB LIFE BY THE HORNS**



Laramie Crew 1500 shown in two-tone Inferno Red Crystal Pearl and Light Graystone Pearl.

# PURE CRAFTSMANSHIP, EVERYWHERE YOU TURN.

IT'S ABOUT BEING FIRST — LIKE FIRST-IN-SEGMENT\* FINISHES IN AN ALL-NEW INTERIOR.

## **NOW THE GOING IS BETTER THAN EVER.**

The refinements to all-new 2009 Ram 1500 include interiors that have been completely redesigned, with comfort and convenience setting a new standard.

## **THE ALL-NEW RAM CREW 1500.**

Meet the first true crew cab size for Ram light duty. All-new Ram Crew 1500 expands the Ram family with innovative storage in and out. The larger interior, with three more inches of rear leg room and four more cubic feet of interior volume when compared to Ram Quad Cab,<sup>®</sup> offers spacious seating for up to six adults. Even expanded, this all-new Ram Crew 1500 is conveniently "garageable."

## **ALL-NEW SOFT-TOUCH INTERIOR.**

This all-new pickup distinguishes itself with touches you can immediately feel and see. The redesigned interior features soft-touch upholstery, panels, and door treatments. Cloth seats feature Stain Repel fabrics — also resistant to odors and static.

## **HEATED STEERING WHEEL.**

The available heated steering wheel is another first for Dodge — a fine touch to the interface that keeps you in control of the vehicle. The steering wheel also contains EVIC controls — the Electronic Vehicle Information Center — an interactive digital display on the instrument cluster. The at-a-glance menu displays a wealth of instant information.

\*Based on *Automotive News* full-size pickup segmentation.

Laramie Crew 1500 shown in Light Pebble Beige.



2

### 1. ALL-NEW INSTRUMENTATION AND CONTROLS

Improvements are everywhere, from fit and finish to the ergonomics of the interior. Attention to small details — like larger controls to better accommodate gloved hands — give all-new Ram 1500 unexpected touches of luxury and convenience throughout.

### 2. PREMIUM UPHOLSTERY WITH AVAILABLE STITCHING ACCENTS

The all-new interior focuses on total comfort and next-generation convenience. Look for improved leather-trimmed upholstery and seat bolsters, with tailor-made stitching.

### 3. ALL-NEW VENTILATED FRONT SEATS AND HEATED REAR SEATS

Available for Sport and Laramie: New internal seat fans circulate cooler ambient cabin air while drawing heat away from the seat surfaces. The microscopic vents in the seats allow ventilation. For cool climates, new Ram Crew 1500 features front *and* rear heated seats.

# HEMISTRY.

How history and legend team up with tomorrow's engineering. Available for all-new 2009 Ram 1500 is the most recent iteration of the legendary 5.7-liter HEMI® V8 with MDS, now with over a dozen new features, including:

## 5.7-LITER HEMI V8 WITH MULTI-DISPLACEMENT SYSTEM



**MORE POWER.** New cylinder heads feature high-flow ports, larger valves and increased compression ratio; results are measured directly in performance. The unique nature of the hemispherical cylinder head is what gives the legendary 5.7-liter HEMI V8 with MDS such clout in the world of trucks — and now it's better than ever.

**MORE TORQUE.** New for the HEMI V8 is a technology not uncommon in Formula One race cars — Variable Valve Timing [VVT]. VVT offers increased engine breathing throughout the rpm range by varying the points at which the valves open and close in conjunction with piston position. Results are tangible: better performance, more efficient operation, and increased torque for towing and hauling.

**MORE EFFICIENCY.** Note the new Short Runner Valve [SRV] Active Intake Manifold. Here, air intake flow is more efficiently controlled by changing port length based on engine rpm. At low speeds, the manifold uses a longer port path for abundant low-end torque; at higher speeds, the manifold uses a short port; air moves faster into the combustion chamber. The SRV manifold contributes to more power and torque.

**REAL FUEL SAVINGS WITH MDS.\*** The innovative Multi-Displacement System [MDS] is genius at work. By seamlessly deactivating half of the cylinders, MDS transforms that legendary V8 into a 4-cylinder fuel sipper.\*

\*Based on manufacturer's preliminary fuel economy estimates of 14 city to 20 highway mpg with MDS using EPA methodology. Results depend on driving habits and conditions.

# HEMI

For 2009 Dodge Ram 1500, the 5.7-liter HEMI V8 with MDS offers a better combination of horsepower and fuel economy<sup>†</sup> than any pickup in its class.

†Based on manufacturer's preliminary fuel economy estimates of 14 city to 20 highway mpg using EPA methodology. Comparison based on 2008 model year full-size pickup competitive data versus the 2009 model year Ram 1500.

# POWERTRAINS THAT DELIVER DECADES OF PERFORMANCE... ...ALL BACKED BY A LIFETIME POWERTRAIN WARRANTY.



## ENGINES



### 5.7-LITER HEMI® V8 WITH MDS.

Now featuring Variable Valve Timing [VVT] with new Active Intake Manifold, the redesigned HEMI V8 churns out very impressive output — up to 390 horsepower, 407 lb-ft of torque.

### 4.7-LITER FLEX FUEL V8.

Highflow cylinder heads and exhaust manifolds — plus dual spark plug technology and E85 compatibility. 310 horsepower, 330 lb-ft of torque.

### 3.7-LITER V6.

Standard. Competitive in power and torque to larger engines, with Electronic Throttle Control. 215 horsepower, 235 lb-ft of torque.

## TRANSMISSIONS



### 545RFE 5-SPEED AUTOMATIC.

Standard with 4.7-liter and 5.7-liter 2WD/4WD applications. Features the ultra-practical Tow/Haul Mode and new Electronic Range Select [ERS].

### 42RLE 4-SPEED AUTOMATIC.

Specific to 3.7-liter 2WD applications. Features Tow/Haul mode and new Electronic Range Select [ERS].

## TRANSFER CASES



### NVG243 TRANSFER CASE.

Part-time, two-speed transfer case; three operating ranges plus neutral; aluminum composition, and electronically operated with panel-mounted instrument switch.

### NVG246 TRANSFER CASE.

This two-speed operates on-demand. Major componentry is of tough magnesium. Features four operating ranges, plus neutral. Electronically operated with instrument panel-mounted switch. At the low range, reduction ratio is a capable 2.72 to 1.

Choose your drive — whether it's the economies of the proven 3.7-liter V6, the exceptional horsepower and torque of the 4.7-liter V8, or the impressive new redesign of the 5.7-liter HEMI V8 with MDS. Your all-new 2009 Dodge Ram 1500 is protected by a Lifetime Powertrain Limited Warranty<sup>1</sup> — and it's the best you'll find. Get all the details during your test-drive — or when you log on to [dodge.com/ram](http://dodge.com/ram)

<sup>1</sup>No deductible. See dealer for a copy of Limited Warranty details. Non-Transferable. Not available on SRT,<sup>®</sup> diesel vehicles, Sprinter, Ram Chassis Cab, Hybrid System components (including transmission), and certain fleet vehicles.



Ram 1500 R/T Regular Cab shown in Brilliant Black Crystal Pearl, with available dual scooped hood, an Authentic Dodge Accessory by Mopar.

# BEST-IN-CLASS\* AERODYNAMICS.

ALL-NEW STYLING, WITH AN EYE ON EFFICIENCY.

Laramie Crew 1500 shown in two-tone Inferno Red Crystal Pearl and Light Graystone Pearl.



**STYLE THAT WORKS.** Yes, all-new Ram 1500 is stunning to look at. But the engineering is all about performance, quality, and capability.

**THE AERODYNAMIC ADVANTAGE.** What you see is a dramatic forward-raking grille and new exterior — but the story is bigger: This redesign is about reducing air friction and drag. The results are best-in-class\* aerodynamics, a design touch that helps improve fuel consumption, further reduces wind noise, and channels rain and water away from the windshield much more effectively.

**INTEGRATED REAR SPOILER.** As part of the tailgate design, the spoiler also functions to channel airflow away from the body — with measurable improvements helping to reduce drag.

**TRIPLE-SEALING FOR DOORS.** All-new door seals for Ram 1500 are a triple-play of advantages: They help lock out road noise, create an air tight seal, and boost the interior comfort level.

\*Based on *Automotive News* full-size pickup segmentation.



## FORWARD-RAKING GRILLE AND WRAPAROUND BUMPERS

All Ram and completely stylish, they contribute to reduced air friction and improved aerodynamics.



## INTEGRATED DUAL EXHAUST

Grab a customized look and sound, and it's factory-installed. Available only with the HEMI® V8 with MDS.



# BUILT LIKE A FREIGHT TRAIN.

TOTALLY ON TRACK. IMPROVED RIDE, HANDLES PLENTY OF PAYLOAD.



## ALL-NEW AND CLASS-EXCLUSIVE\*: MULTILINK COIL REAR SUSPENSION

The all-new 2009 Ram 1500 rides like it's on the truest of rails. The all-new five-link coil-spring rear suspension cuts the friction in the spring system to a fraction, and reduces weight when compared to conventional leaf spring designs. The results include enhanced ride quality and comfort, better control and handling, and greater confidence — on any road surface. There's more — at [dodge.com/ram](http://dodge.com/ram)

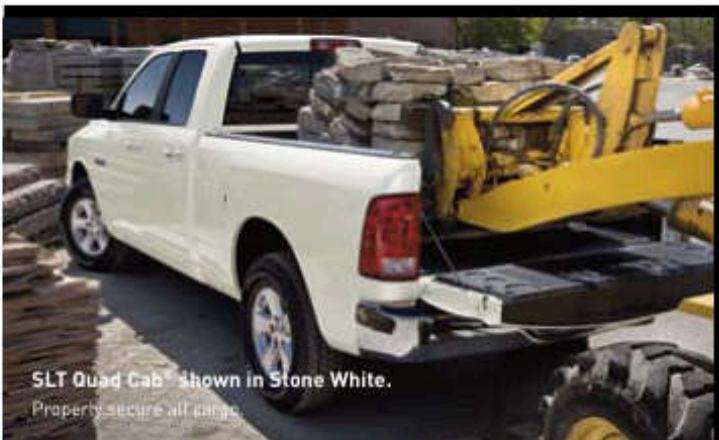
\*Based on *Automotive News* full-size pickup segmentation.



## 1,910-LB MAX PAYLOAD

From the get-go, it's all about truck capability. The new 2009 Dodge Ram 1500 gives you 1,910 lb\* of maximum payload capacity — more than enough to meet the challenges of your life.

\*Regular Cab long box, when properly equipped.



SLT Quad Cab<sup>®</sup> shown in Stone White.

Properly secure all cargo.

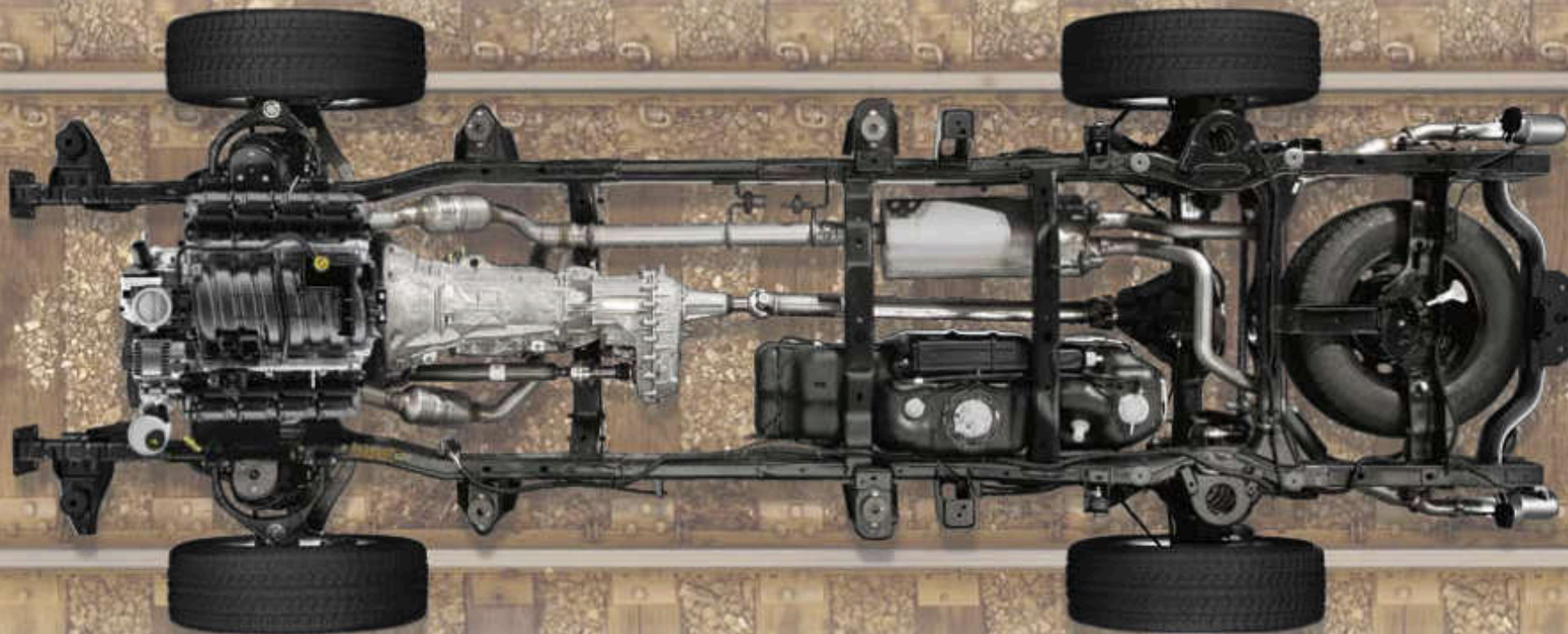


### BULLETPROOF FRAME

Along with an all-new rear suspension design, the new frame is fully boxed and comprised of Advanced High-Strength Steel [AHSS] rated at an astounding 85,000 psi tensile strength. This frame is designed to be the strongest ever in a Ram, with benefits that include reduced weight, increased torsional rigidity and improved structural performance.

### SMOOTH RIDE AHEAD

Taken together, improvements to the 2009 Ram 1500 frame add up to quality of ride: less noise, vibration and harshness, enhanced handling and comfort.



### FRONT SUSPENSION

If you've got a success, build on it: Front suspension improvements range from lighter weight, lower ride height, new front springs and the new tubular stabilizer bar for greater ride control.



### STOP IT. NOW.

When it comes to stopping, we're moving forward: The comprehensive brake system includes 4-wheel vented disc brakes with an antilock braking system [ABS]. The new Electronic Stability Program [ESP] includes All-Speed Traction Control, Brake Assist, Electronic Roll Mitigation, Hill Start Assist [HSA], and Trailer Sway Control [TSC]. It's all about safety and security — which is why all of these features are standard on all-new 2009 Ram 1500 models.



# BORN TO LEAD. BRED TO PULL.

## NEW REAR SUSPENSION TEAMS UP WITH A REDESIGNED FRAME.

Full-size towing capability: You think powertrain, but we offer a power trip. 2009 Ram 1500 now offers new Electronic Range Select [ERS] and its new available floor console shift lever, allowing you to manually limit the top available gear. Additional towing-made-easy systems — like Trailer Sway Control [TSC] and Brake Assist — come standard; they're all part of the extraordinary Electronic Stability Program\* [ESP] system. Even the tow hooks and trailer hitch have been redesigned. It all gives you exceptional payload and towing capability, enhanced control, better ride quality and handling — and stopping power like never before. For more, hitch up to all the info at [dodge.com/ram](http://dodge.com/ram)

\*No system, no matter how sophisticated, can repeal the laws of physics or overcome careless driving actions. Performance is limited by available traction, which snow, ice and other conditions can affect. When the ESP warning lamp in the speedometer flashes, the driver needs to use less throttle and adapt speed and driving behavior to prevailing road conditions. Always drive carefully, consistent with conditions. Always wear your seat belt.



SLT Quad Cab<sup>®</sup> shown in Bright Silver Metallic.



### ALL-NEW ERS WITH FLOOR CONSOLE SHIFT LEVER

Electronic Range Select offers enhanced driver control. A simple touch to the left or right results in instantaneous down- or upshifting, for superb towing control based on road and engine speed.



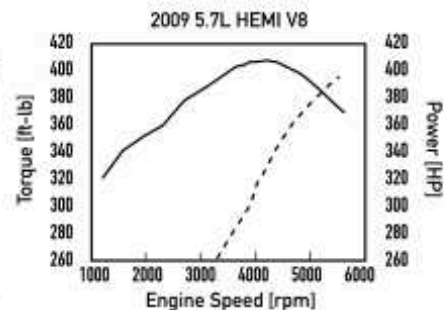
### INTEGRATED HITCH RECEIVER

When more towing capability is needed, Ram offers a Class IV hitch receiver. The attachment points of the redesigned hitch-to-frame design offer benefits like reduced torsion on the frame and improved overall vehicle NVH (noise, vibration, and harshness) control.

### HEMI<sup>®</sup> V8 POWER AND TORQUE

The redesigned 5.7-liter HEMI V8 features Variable Valve Timing [VVT], dual spark plug technology, and the innovative Multi-Displacement System [MDS], all contributing to fuel efficiency.\* Power is as impressive — but is now more efficient — than ever.

\*Based on manufacturer's preliminary fuel economy estimates of 14 city to 20 highway mpg with MDS using EPA methodology. Results depend on driving habits and conditions.



390 horsepower @ 5,600 rpm  
407 lb-ft of torque @ 3,950 rpm  
(When properly equipped.)



**TAKE IT TO THE MAX.** In new Ram 1500, maximum GCWR is maintained at an ultra-capable 14,000 pounds.<sup>1</sup>

<sup>1</sup>When properly equipped. Assumes 150 lb for the driver. Options, equipment, cargo and passengers must be deducted [see Dodge Trailer Tow Guide for specific details].

# THINK INSIDE THE BOX.

THIS SEGMENT-FIRST\* MAKES RAM SECOND TO NONE.

## CLASS-EXCLUSIVE\* ALL-NEW RAMBOX.™

Meet the RamBox Cargo Management System, for capability that's all-new and all-inclusive: dry, lockable and lighted storage bins, one on each side of the bed, large enough for big tools or a bag of golf clubs; a dual-function bed extender/divider; a cargo rail system with adjustable cleats. Available on all-new 2009 Ram Crew 1500.

### BED EXTENDER/DIVIDER

It instantly adapts, allowing customization of the cargo area at any time. It's stored at the front of the bed when not in use. Pop it out, unfold it, put it in place — and you've extended your cargo bed by an appreciable amount. Also note the cargo rail system with four fully adjustable cleats. It's all part of the innovative, fully integrated RamBox Cargo Management System.



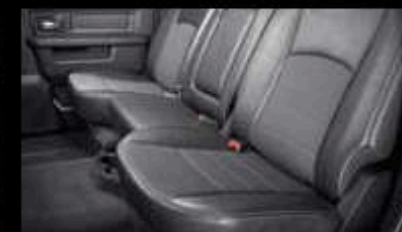
### IN-FLOOR STORAGE

Innovative and class-exclusive,\* and only on all-new Ram Crew 1500.  
\*Based on *Automotive News* full-size pickup segmentation.



### DUAL GLOVE BOXES

Take convenience to the next level — intelligent interior design at its best on Laramie, SLT, TRX and Sport models.



### UNDER-THE-REAR-SEAT STORAGE

Lift either section of the 60/40 split rear seat for more storage possibilities.



# IRON-CLAD SAFETY AND SECURITY FEATURES.

TAKE MORE THAN 30 SAFETY AND SECURITY FEATURES ALONG FOR THE RIDE.

Dodge Ram 1500 takes the technology of safety and security to the next level — virtually invisible to the driver and passengers, but right there when you need it. The new chassis features hydroformed front crush zones, improved side-impact protection, an enhanced Accident Response System, advanced multistage front air bags, and standard supplemental side-curtain air bags.\* Topping it off is the available rear park assist system, ParkSense.<sup>®†</sup>

**ALL-NEW RAM. BRAKES** The most comprehensive and advanced standard braking system ever on Dodge Ram, it's designed to do far more than stop you in your tracks. For 2009, all-new Ram 1500 offers an available power/memory adjustable brake pedal along with the standard Electronic Stability Program (ESP)<sup>‡</sup> braking and towing stability system.

**ANTILOCK BRAKING SYSTEM (ABS)** Standard, this four-wheel antilock brake system is an electronically operated multichannel system that controls each brake individually; the electrical system is independent from all other circuits. ABS is part of the Electronic Stability Program (ESP)<sup>‡</sup>; ESP sensors are so sophisticated, they can determine slippage and allowance in off-road conditions — like dirt or gravel hills.

**ELECTRONIC STABILITY PROGRAM (ESP)<sup>‡</sup>** By combining and interpreting information from sensors, driver input, and software, ESP helps the driver maintain vehicle directional stability under many different driving conditions.

**TRAILER SWAY CONTROL (TSC)** TSC can recognize a swaying trailer and automatically apply any individual wheel's brakes and/or reduce the engine's power in the attempt to eliminate the trailer sway. TSC applies brake pressure at all four wheels to slow the vehicle, while increasing pressure on one front wheel to counteract the sway.

**ALL-SPEED TRACTION CONTROL** Wheel slippage in wet or icy conditions is controlled across the board, making adjustments to the engine and brakes.

**HILL START ASSIST (HSA)** Class-exclusive<sup>§</sup> HSA is especially valuable on the off-road or on inclines. HSA maintains brake pressure until enough engine torque is produced for forward motion.

**ELECTRONIC ROLL MITIGATION (ERM)** Sophistication at every turn: If the ERM system detects a potential rollover [for example, a corner taken too sharply; a swerve to avoid a problem], it automatically applies the correct brakes and controls the throttle.

**BRAKE ASSIST** This adjunct to the antilock braking system senses the speed or force used by the driver to press the brake pedal. If it determines that an emergency stop is underway, it makes sure full brake pressure is applied instantly to help shorten stopping distances.

**TIRE PRESSURE MONITOR** Should the air pressure in any tire be significantly reduced, you're forewarned by audible and visible warnings from the Tire Pressure Monitoring System. Standard on all models.

**PROTECTION IN MILLISECONDS** Dual-action side-curtain air bags\* are twice the volume of the previous model, cover all side windows — and stay active for five seconds.

## NEW PARKVIEW<sup>®</sup> REAR BACK-UP CAMERA

ParkView<sup>†</sup> rear back-up camera is designed to assist the driver in detecting obstacles out of the line of sight during reversing maneuvers.



All-new Ram Sport Crew 1500 shown in Deep Water Blue Pearl.

\*Always sit properly in the seat with the seat belt fastened. Children 12 and under should always be in a backseat correctly using an infant or child restraint system or the seat belt positioned correctly for the child's age and weight. †Always check entire surroundings before backing up. ‡No system, no matter how sophisticated, can repeal the laws of physics or overcome careless driving actions. Performance is limited by available traction, which snow, ice and other conditions can affect. When the ESP warning lamp in the speedometer flashes, the driver needs to use less throttle and adapt speed and driving behavior to prevailing road conditions. Always drive carefully, consistent with conditions. Always wear your seat belt. †Based on Automotive News full-size pickup segmentation. Properly secure all cargo.

RELIABILITY



Ram Crew 1500 TRX4 Off-Road shown in two-tone Sunburst Orange and Mineral Gray Metallic.



## DODGE INVENTED DEPENDABILITY.

It's only fitting that the Dodge brothers coined the term "dependability" in the early 1900s. Dodge pushes pre-production testing to the limit — and then takes it further. We create tests that require these trucks to perform far beyond predictable daily use. We demand that components exceed conventional tolerances. We place powertrains under stresses that are unreasonable in real life. And you benefit.

Testing techniques can be summed up in a single word: *brutal*. Our Powertrain Wide-Open Throttle Testing can run continuously — for up to 3,000 hours. Thermodynamic Chamber Testing in controlled cycles takes Ram to literal extremes — from minus 20 up to 180 degrees Fahrenheit. Add it on, Ram can take it: Electromagnetic Pulse Testing for reliability. Acoustic Lab Testing to ensure minimal noise intrusion. Emissions Lab Testing to meet current regulations. And the list goes on.

In the end, this is the toughest and most reliable benchmark that Dodge has ever built.



**DURABILITY TESTING** Pre-production testing for all-new 2009 Ram 1500 surpassed nine million customer-equivalent miles. This is a truck built to last a lifetime.



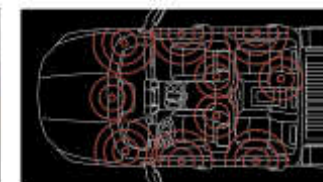
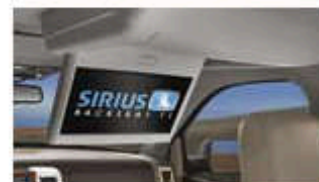
uconnect

All-new Ram Laramie Crew 1500 interior shown in Light Pebble Beige.

# THE ART AND SCIENCE OF TRUCKNOLOGY.

CALL IT A CASE STUDY IN CONNECTIVITY.

**Trucknology:** It's the combination of toughness and technology, and it works for you every moment you're on the road — or off-road. And it's part and parcel of the thinking that went into creating the all-new 2009 Dodge Ram 1500. It's all here. From all-new Ram Crew 1500 to Quad Cab® — the most popular Ram on the market — every 2009 Ram model features all-new instrumentation, all-new interior, all-new electronics and seating. This is where it all comes together. This is where you live life.



**uconnect gps**

Utilizes a 30GB hard drive to combine turn-by-turn-guidance (in three languages) with the hands-free uconnect phone and includes uconnect tunes, with multiple ways to save and play music.

**uconnect phone**

Stay in touch, and keep it hands-free, with this available voice-activated communication system using Bluetooth® technology.

**uconnect tunes**

Allows you to store photos, playlists, maps, points of interest and much more.

**uconnect studios**

Lets you bundle or select individual available features, such as SIRIUS® Satellite Radio [including one-year subscription]. Also included: SIRIUS Backseat TV™ with a variety of channels offering live mobile broadcasts.

**uconnect web**

Instant WiFi: Allows everyone on board Web access. No software is needed. Authentic Dodge Accessory by Mopar. Subscription required, sold separately.

**ALPINE® STEREO, MATRIX SURROUND SOUND**

The clarity rocks: Available Alpine system offers 506 watts, dual voice coil subwoofer and matrix amplified Surround Sound with 10 optimally positioned speakers.

# THIS FAMILY IS ROOTED IN HARD WORK.

For the truest test of Ram endurance and quality, just put them to work in the toughest environments from morning to night — and be prepared to measure reliable performance over decades. From the recent additions of the ultra-heavy-duty Ram 4500 and 5500 Chassis Cabs to the newest Ram in the field — all-new 2009 Ram Crew 1500 — here's the strength and sureness to meet any challenge head-on. The family of Ram pickups and Chassis Cabs gives you everything a truck owner could ever want — and then some. There's a ton of info a click away — at [dodge.com/ram](http://dodge.com/ram)



Ram 1500 SLT Quad Cab® shown in Bright Silver Metallic and Ram 5500 Chassis Cab with Stake Bed shown in Flame Red.

# OUT-AND-OUT OUTFITTED.

Authentic Dodge Accessories by Mopar are the partner to your Ram's power. From grille to gate and everything in between, these are the accessories to get the job done — and look good doing it.

- 1. PERFORMANCE-INSPIRED HOOD.** For added show, this stamped aluminum dual-scooped hood features molded bezels. Utilizes existing mounting hardware. **BODY KIT.** Make a statement, and give your Ram a sleek and powerful stance. Body Kit includes a Front Balance, Side Sill and Bed Accents. **20-INCH CHROME-PLATED CAST ALUMINUM WHEEL.** Good looks will take you far with this custom wheel, matched to your vehicle's specifications for a balanced ride. **CHROME FUEL FILLER DOOR.** Adds a bright complement to your Ram's body-color.
- 2. BED CAP.** High-line cap features tinted glass, one-piece-flush side windows with screens, removable front sliding window, curved rear glass and carpeted headliner. **20-INCH 6-SPOKE POLISHED FORGED ALUMINUM WHEEL.** This unique 6-spoke wheel adds a bright note to your Ram's appearance.



AUTHENTIC DODGE ACCESSORIES



BRIGHT PEDAL AND AMBIENT LIGHT KITS

TELESCOPING TRAILER TOW MIRRORS

CHROME BODYSIDE MOLDINGS

CHROME EXHAUST TIP

ALUMINUM RUNNING BOARDS





### **uconnect web**

Turn your vehicle into a WiFi Hotspot, allowing every passenger in your vehicle to harness the power and entertainment value of the Internet at the same time. Designed for use with laptops or other wireless devices; does not require software. Subscription required, sold separately.

### 3. CHROME FRONT AIR DEFLECTOR.

Stylish air deflector is designed to help deflect road spray and bugs up and away from your windshield.

### CHROME HONEYCOMB GRILLE.

Chromed grille insert features a honeycomb design and matches the grille surround for a bold look.

### 20-INCH CAST-ALUMINUM WHEEL.

This premium wheel features a stylish 5-spoke design

and a bright finish that will last for years.

### CHROME TUBULAR SIDE STEPS.

These side steps feature black molded end caps, slip-resistant step pads and drill-free mounting brackets. Choose from a full line of accessories that feature a fit, finish, and functionality designed specifically for your Ram. Check out [mopar.com](http://mopar.com) and step up to substance with style.



DIAMOND PLATE TOOLBOX

BED-MOUNT CARGO BASKET WITH CARGO NET

FIBERGLASS TONNEAU COVER

SNAPLESS PREMIUM SOFT TONNEAU COVER

UNDER-THE-RAIL BEDLINER



## TRIM LEVELS AND EQUIPMENT

Each successive trim level features the equipment of the previous trim, with exceptions noted.



**1500 ST REGULAR CAB**  
Stone White



**1500 SLT QUAD CAB**<sup>®</sup>  
Austin Tan Pearl



**TRX4 OFF-ROAD CREW 1500**  
Two-tone Brilliant Black Crystal Pearl and Mineral Gray Metallic



**1500 SPORT QUAD CAB**  
Deep Water Blue Pearl



**LARAMIE CREW 1500**  
Two-tone Inferno Red Crystal Pearl and Light Graystone Pearl

### ST

#### Engine/Transmission

3.7L V6/4-speed automatic

#### Standard Equipment

Black Upper Fascia, Gray Bumpers  
Chrome Grille with Black Inserts  
Vinyl Floor  
Vinyl 40/20/40 Front Seat/  
Folding Rear  
Manual Windows and Mirrors  
Manual Door Locks  
Air Conditioning  
Tilt Steering  
CD Radio  
P265/70R17 BSW Tires  
Side-Curtain Air Bags  
4-Wheel Disc ABS  
Electronic Stability Program  
Automatic Headlamps  
Base Audio Speakers  
Bed Rail Caps  
Electronic Range Select  
26-Gallon Fuel Tank  
32-Gallon Fuel Tank for Regular Cab  
Long Box

### SLT

#### Engine/Transmission

4.7L V8/5-speed automatic

#### Standard Equipment

Body-Color Upper Fascia  
Chrome Grille with Black Inserts  
Rear Sliding Window  
Passenger Visor Mirror  
Stain Repel Cloth Fabric  
40-20-40 with Rear Fold and  
Underseat Storage  
O/H Console with Reading Lamps  
Remote Keyless Entry  
17" Aluminum Wheels  
SIRIUS<sup>®</sup> Satellite Radio  
EVIC in Cluster  
Express One-Touch Power Windows  
Floor Mats  
Body-Color Grille with  
Black Inserts  
Two-Tone Paint with Wheel Flares  
Painted Accent Color Bumpers  
17" Aluminum Wheels  
P265/75R17 On-/Off-Road Tire  
LT275/70R17 (4x4)  
3.92 Axle Ratio with Limited-Slip  
Differential  
Skid Plates — Tow Hooks  
Quad Burner Headlamps  
Fog Lamps  
TRX Off-Road Decals

### TRX & TRX4

#### Engine/Transmission

4.7L V8/5-speed automatic

#### Standard Equipment

Rear Sliding Window  
Passenger Visor Mirror  
Stain Repel Cloth Fabric  
40-20-40 with Rear Fold and  
Underseat Storage  
O/H Console with Reading Lamps  
Remote Keyless Entry  
SIRIUS<sup>®</sup> Satellite Radio  
EVIC in Cluster  
Express One-Touch Power Windows  
Floor Mats  
Body-Color Grille with  
Black Inserts  
Two-Tone Paint with Wheel Flares  
Painted Accent Color Bumpers  
17" Aluminum Wheels  
P265/75R17 On-/Off-Road Tire  
LT275/70R17 (4x4)  
3.92 Axle Ratio with Limited-Slip  
Differential  
Skid Plates — Tow Hooks  
Quad Burner Headlamps  
Fog Lamps  
TRX Off-Road Decals

### SPORT

#### Engine/Transmission

5.7L HEMI<sup>®</sup> V8 with MDS/5-speed  
automatic

#### Standard Equipment

Monotone Exterior Appearance  
Chrome Grille and Inserts  
Body-Color Front Fascia/Bumper  
Body-Color Rear Bumper  
Body-Color Heated Mirrors with  
Signal/Puddle Lamps  
20" Chrome-Clad Aluminum Wheels  
P275/60R20 OWL Tires  
Dual Exhaust with Aggressive Note  
Quad Burner Headlamps  
Fog Lamps  
Sport Cloth High Shoulder  
Bucket Seats, 8-way Power Driver,  
Split/Fold Rear  
Monotone Interior  
Floor Console Mounted Shifter  
Leather-Wrapped Steering Wheel  
with Audio Controls  
Soft Upper Instrument Panel and  
Door Trim  
115V Power Inverter

### LARAMIE

#### Engine/Transmission

5.7L HEMI V8 with MDS/5-speed  
automatic

#### Standard Equipment

Two-Tone Paint with Wheel Flares  
Chrome Bumpers, Grille and Inserts  
Chrome Power Heated Mirrors with  
Signal/Puddle Lamps  
20" Chrome-Clad Wheels, Six-Spoke  
P275/60R20 BSW Tires  
ParkSense<sup>®</sup> Rear Park Assist System  
Power Heated Front Seats  
uconnect tunes with Surround  
Sound Speakers with Subwoofer  
Remote Start  
Leather-Wrapped Heated  
Steering Wheel  
Dual Zone ATC  
Leather-Trimmed 40/20/40 Heated  
Bench Seat, Power 10-way  
Driver, 8-way Passenger, with  
Rear Split/ Fold and Storage  
Security Alarm  
Memory System with Mirrors, Seats,  
Pedals and Radio  
Bright Accents/Woodgrain  
Door Trim  
Power Adjustable Pedals  
Dual Exhaust — Refined Power Note  
Laramie Badge

## WHEELS

Give it all the personal touches that create the ride that's all your own. The wheel selection for all-new Ram 1500 ranges from capable 17-inch wheels to authoritative 20-inch chrome-clad aluminum rollers — now standard equipment on Ram Laramie models.



1. 17-inch drop-center steel wheel with black center cap [Standard on ST models]
2. 17-inch chrome-clad steel wheel [Available on ST models]
3. 17-inch painted aluminum wheel [Standard on SLT and TRX models]
4. 17-inch chrome-clad aluminum wheel [Available on Laramie models]
5. 20-inch painted aluminum wheel [Standard with Big Horn Group; available on SLT]
6. 20-inch chrome-clad aluminum wheel [Standard on Sport; available on Big Horn Group]
7. 20-inch chrome-clad aluminum wheel [Standard on Laramie models]
8. 20-inch 5-spoke chrome-plated cast aluminum wheel [Authentic Dodge Accessory]
9. 20-inch 6-spoke polished forged aluminum wheel [Authentic Dodge Accessory]

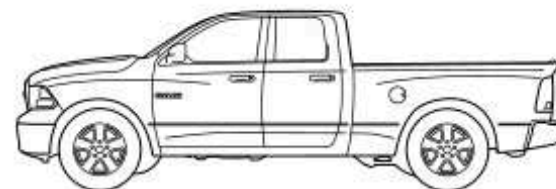
## CAB/BED CONFIGURATIONS

All specifications are in inches.



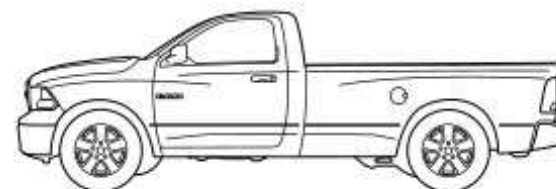
### CREW 1500

Total Length:	227.5
Total Width:	79.4
Bed Length:	67.4
Bed Width:	66.4
Bed Depth:	20.0



### QUAD CAB®

Total Length:	229.0
Total Width:	79.4
Bed Length:	76.3
Bed Width:	66.4
Bed Depth:	20.1



### REGULAR CAB

	Short Box	Long Box
Total Length:	209.0	226.9
Total Width:	79.4	79.4
Bed Length:	76.3	96.3
Bed Width:	66.4	66.4
Bed Depth:	20.1	20.2

# FABRICS

## Ram Interiors



Bristol Leather Trim/Bristol Vinyl  
Dark Slate Gray/Dark Slate Gray  
Ram 1500 Laramie



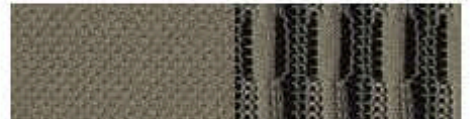
Bristol Leather Trim/Bristol Vinyl  
Light Pebble Beige/Light Pebble Beige  
Ram 1500 Laramie



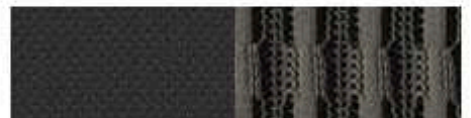
Bristol Vinyl/Bristol Axis II Leather Trim  
Dark Slate Gray/Dark Slate Gray  
Ram 1500 Sport



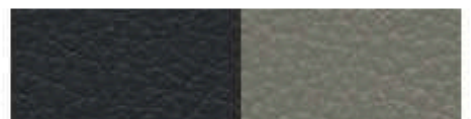
Alias Cloth/Caprice Vinyl  
Dark Slate Gray/Dark Slate Gray  
Ram 1500 Sport



Racine/Dallas Cloth with Stain Repel  
Light Pebble Beige/Light Pebble Beige  
Ram 1500 SLT, TRX



Racine/Dallas Cloth with Stain Repel  
Dark Slate Gray/Medium Graystone  
Ram 1500 ST, SLT, TRX



Bristol/Bristol Vinyl  
Dark Slate Gray/Medium Graystone  
Ram 1500 ST

# COLORS



Laramie Crew 1500 in two-tone Inferno Red Crystal Pearl and Light Graystone Pearl



SLT Quad Cab® in Flame Red



Laramie Crew 1500 in two-tone Austin Tan Pearl and Light Graystone Pearl



SLT Quad Cab in Sunburst Orange Pearl



Sport Crew 1500 in Detonator Yellow



Laramie Crew 1500 in two-tone Brilliant Black Crystal Pearl and Light Graystone Pearl



ST Regular Cab in Stone White



Sport Crew 1500 in Bright Silver Metallic



ST Regular Cab in Mineral Gray Metallic



SLT Quad Cab in Light Graystone Pearl



Sport Crew 1500 in Deep Water Blue Pearl

Inferno Red  
Crystal Pearl

Flame Red

Sunburst  
Orange Pearl

Detonator  
Yellow

Stone White

Bright Silver  
Metallic

Light Graystone  
Pearl

Mineral Gray  
Metallic

Austin Tan  
Pearl

Deep Water  
Blue Pearl

Brilliant Black  
Crystal Pearl

# 2009 DODGE RAM 1500 BUYER'S GUIDE

	ST REG/QUAD	SLT REG/QUAD/CREW	TRX AND TRX4 QUAD/CREW	SPORT REG/QUAD/CREW	LARAMIE QUAD/CREW
PACKAGE DESIGNATIONS	A	G	T	L	H
<b>ENGINE/TRANSMISSION</b>					
3.7L Magnum® V6/4-Speed Automatic VLP	22A	N/A	N/A	N/A	N/A
4.7L Flex Fuel V8/5-Speed Automatic	24A	24G	24T	N/A	N/A
5.7L HEMI® V8 with VVT and MDS/5-Speed Automatic	26A	26G	26T	26L	26H
<b>MECHANICAL FEATURES</b>					
Alternator — 160-amp	•	•	•	•	•
Axle — 3.21 Ratio [2WD only]	•	•			
— 3.55 Ratio [available on 4x2; standard on 4x4]	Q/•	Q/•	•	•	•
— 3.92 Ratio [available on 4x2; included with TRX4]	Q	Q	P	Q	Q
— 4.10 Ratio [included on Regular Cab Sport R/T 4x2]				P	
— Antispin rear differential [included with 3.92 or 4.10 axle ratio]	P	P	P	P	P
Battery — 625-amp	•	•	•	•	•
Engine Block Heater	Q	Q	Q	Q	Q
Fuel Tank — 26-gallon [not available with 8-ft box]	•	•	•	•	•
Fuel Tank — 32-gallon [std. on Regular Cab 8' box models]; [optional on 6', 3" and 5', 7" box models]	Q/•	Q/•	Q/•	Q	Q
Shock Absorbers — Front, heavy-duty	•	•	•	•	•
— Rear, heavy-duty	•	•	•	•	•
Stabilizer Bar — Front	•	•	•	•	•
Steering — Power, rack-and-pinion	•	•	•	•	•
Trailer Hitch — Class IV hitch receiver [additional Dodge Towing Accessories may be required]	Q	Q	Q	Q	Q
Transfer Case — Electric shift, part-time [4x4 only]	•	•	•		
Transfer Case — On demand [4x4 models only; requires HEMI V8]				•	•
Winch — Tire carrier	•	•	•	•	•
<b>EXTERIOR FEATURES</b>					
Badging — 4x4 [4x4 models only]	•	•	•	•	•
— Big Horn [included with Big Horn Regional Group]		P			
— Laramie					•
— Lone Star [included with Lone Star Regional Group, Texas only]		P			
— R/T [Regular Cab Short Box model only]				•	
— Ram's Head	•	•	•	•	•
— SLT		•			
— TRX [4x2 only]			•		
— TRX4 Off-Road [4x4 only]			•		
Bedliner — Box, under-rail	Q	Q	Q	Q	Q
Bumpers — Body-color, rear				•	
— Front, Chrome		•		•	
— Front, Painted Gray	•		•		
— Rear, Chrome		•		•	
— Rear, Painted Gray	•		•		
Exhaust — Dual rear, refined power note [with Regional Group, requires HEMI V8]		P			•
— Dual rear, aggressive note [requires HEMI V8]				•	
Fascia — Front, body-color				•	
— Front, upper body-color		•	•		•
— Front, upper Dark Gray	•				

	ST REG/QUAD	SLT REG/QUAD/CREW	TRX AND TRX4 QUAD/CREW	SPORT REG/QUAD/CREW	LARAMIE QUAD/CREW
PACKAGE DESIGNATIONS	A	G	T	L	H
<b>EXTERIOR FEATURES (CONTINUED)</b>					
Fog Lamps — Included with Regional Groups and Popular Equipment Group		P	•	•	•
Grille — Body-color surround, Black insert [included on Regular Cab Sport R/T 4x2 only]			•	P	
— Chrome surround, Black insert grille	•	•			
— Chrome surround, Chrome insert		P		•	•
Headlamps — Automatic	•	•	•	•	•
— Halogen	•	•			
— Quad Halogen [included with Big Horn and Lone Star Regional Groups]		P	•	•	•
Mirrors, Exterior — Manual, Black, Regular Cab Only	•				
— Power multifunction, heated, folding, Chrome, includes position memory, exterior courtesy lamps and supplemental turn signal					•
— Power, heated, folding, Black, [included with Power Accessory or Power and Remote Entry Groups on ST Regular Cab models]	P/•	•	•		
— Power, heated, folding, Black, includes exterior courtesy lamps and supplemental turn signal [included with Luxury Group on TRX4 and SLT models]		P	P		
— Power, heated, folding, body-color, includes exterior courtesy lamps and supplemental turn signal				•	
Monotone Paint	•	•	N/A	•	Q
Paint — Two-tone, includes accent fender flares; lower color is Mineral Gray Metallic on TRX and Light Graystone on Laramie			•		•
Skid Plate — Front suspension, 4x4 only. [included with Protection Group; standard on TRX4]	P	P	•	P	P
— Transfer case [4x4 only] [included in Protection Group; standard on TRX4]	P	P	•	P	P
Storage — RamBox™ Pickup box with integrated bins which are weatherproof, lockable and drainable. Also includes rails with four adjustable cleats and a dual purpose bed divider/bed extender [Crew 1500 models only]		Q	Q	Q	Q
Tailgate — Removable with caliper latches	•	•	•	•	•
Tires — LT275/70R17C OWL All-Terrain [TRX 4x4 only]			•		
— P265/70R17 BSW all-season	•	•			Q
— P265/70R17 OWL all-season [standard on TRX 4x2] [opt. on G & H pkg. 4x4 only]		Q	•		Q
— P275/60R20 BSW all-season [included with 20" x 9" wheels]		P			•
— P275/60R20 OWL all-season		Q		•	Q
— Spare, full-size	•	•	•	•	•
Tow hooks — Included with Protection Group	Q/P	Q/P	•		Q/P
Wheels — 17" x 7.0" styled steel, painted argent	•				
— 17" x 8.0" chrome-clad aluminum					Q
— 17" x 7.0" steel spare	•	•	•	•	•
— 17" x 8.0" cast aluminum		•	•		
— 17" x 8.0" steel chrome-clad	Q				
— 20" x 9.0" 5-spoke chrome-plated cast aluminum wheel [Authentic Dodge Accessory]					
— 20" x 9.0" 6-spoke polished forged aluminum wheel [Authentic Dodge Accessory]					
— 20" x 8" aluminum, [included with Big Horn or Lone Star Regional Groups and Popular Equipment Group]		Q/P			
— 20" x 9" chrome-clad aluminum		Q		•	
— 20" x 9" chrome-clad aluminum					•
Wheel Well Flares — Lower two-tone body-color					•
— Painted Mineral Gray					•
Windshield Wipers — Variable-intermittent	•	•	•	•	•

• = Standard equipment. Q = Optional. Q/P = Optional, with Package. P = Available within package noted in parentheses. N/A = Not Available

# 2009 DODGE RAM 1500 BUYER'S GUIDE

	ST REG/QUAD	SLT REG/QUAD/CREW	TRX AND TRX4 QUAD/CREW	SPORT REG/QUAD/CREW	LARAMIE QUAD/CREW
PACKAGE DESIGNATIONS	A	G	T	L	H
<b>INTERIOR FEATURES</b>					
Air Conditioning — Dual zone temperature control [included with Sport Premium Group]				P	*
Air Conditioning	*	*	*	*	*
Assist Handle — Driver and passenger-side	*	*	*	*	*
Bezel — Center stack Woodgrain insert					*
— Center stack, black	*				
— Center stack, color-keyed		*	*	*	
Cigar Lighter — Included with Smoker's Group	O	O	O	O	O
Cluster — Instrument, with display screen for vehicle information center		*	*	*	*
— Instrument, with tachometer and 120-mph speedometer	*				
Console — Full-size floor console with floor-mounted automatic shifter [included with front bucket seats]		P	P	*	P
— Overhead with trip computer		*	*	*	
— Overhead, with trip computer and HomeLink <sup>®</sup> [included in Luxury Group]		P	P	P	*
Door Locks — Manual	*				
— Power [included in Power Accessory and Power and Remote Entry Group]	P	*	*	*	*
Floor Covering — Carpet	O	*	*	*	*
— Heavy-duty vinyl	*				
Floor Mats — Front and rear, carpeted [Quad and Crew Cab; included with carpet on ST models]	O	*	*	*	*
— Front, carpeted [Regular Cab; included with carpet on ST models]	O	*	*	*	
Load Floor — Rear fold-flat [Quad only] — [included with *GJ,*VL,*M9,*AJ,*CJ and *MJ seats]		P	P	P	P
Mirrors, interior — Auto-dimming rearview day/night [included with Luxury Group and uconnect]		O/P	O/P	*	*
— Day/night manual	*	*	*	*	*
— Illuminated visor passenger and driver side [included with Luxury Group]		P	P	P	*
— Passenger-side visor with mirror		*	*	*	*
Pedals — Power adjustable		O	O	O	
— Power adjustable with memory					*
Power Accessory Delay	*	*	*	*	*
Power Outlet — 12-volt auxiliary	*	*	*	*	*
— 115-volt auxiliary [included with *GJ,*VL,*M9,*AJ,*CJ,*MJ seats]		P	P	*	*
Seats — 10-way power driver [included with *M9,*AJ,*MJ seats]		P	P	P	
— 10-way power driver and 6-way power passenger seats [included with *CJ seats]				P	
— 10-way power driver with memory and 6-way power passenger seats [included with *GJ and *VL seats]					*
— Belt, front shoulder height adjustable [CGD]	*	*	*	*	*
— Cloth-trimmed 40/20/40 split-bench front seat with folding center armrest/business console [Quad and Crew 1500 models include folding rear bench seat trimmed in cloth]	O	*	*		
— Cloth-trimmed low-back bucket seats, power 10-way driver seat, power lumbar adjust, fixed center console, 115-volt auxiliary power outlet, rear fold-flat load floor on Quad Cab <sup>®</sup> [Quad Cab and Crew 1500 models include 40/40 split-folding rear bench seat trimmed in cloth]				*	
— Heated, driver and front-passenger, includes heated steering wheel [included with *GJ,*VL and *CJ seats]				P	*
— Heated, second row, Crew 1500 only [included with *GJ bucket seats]					P

	ST REG/QUAD	SLT REG/QUAD/CREW	TRX AND TRX4 QUAD/CREW	SPORT REG/QUAD/CREW	LARAMIE QUAD/CREW
PACKAGE DESIGNATIONS	A	G	T	L	H
<b>INTERIOR FEATURES (CONTINUED)</b>					
Seats (continued) — Leather-trimmed 40/20/40 split-bench heated front seats with power 10-way/memory for driver and power 6-way passenger seat, power lumbar adjust, front center seat cushion storage and folding center armrest/business console, 115-volt auxiliary power outlet, fold-flat load floor on Quad models. [Quad Cab and Crew 1500 include 40/40 split-folding rear bench seat trimmed in vinyl]					*
— Leather-trimmed low-back, ventilated and heated bucket seats, includes power 10-way driver and power 6-way passenger, power lumbar adjust, fixed center console, 115-volt auxiliary power outlet and rear fold-flat load floor on Quad Cab. [Quad Cab and Crew 1500 models include 40/40 split-folding rear bench seat trimmed in vinyl]				O	
— Leather-trimmed low-back, ventilated and heated bucket seats, includes power 10-way driver and power 6-way passenger, power lumbar adjust, fixed center console, 115-volt auxiliary power outlet, rear fold-flat load floor on Quad Cab and heated 2nd-row seats on Crew 1500. [Quad Cab and Crew 1500 models include 40/40 split-folding rear bench seat trimmed in vinyl]					O
— Premium cloth-trimmed 40/20/40 split-bench front seat, power 10-way driver's seat, power lumbar adjust, folding center armrest/business console with center seat cushion storage, 115-volt auxiliary power outlet, fold-flat load floor on Quad Cab. Included with Popular Equipment Group [Quad Cab and Crew 1500 include 40/40 split-folding bench seat]		O/P	O/P		
— Premium cloth-trimmed low-back bucket seats, power 10-way driver seat, power lumbar adjust, fixed center console, 115-volt auxiliary power outlet, rear fold-flat load floor on Quad Cab. [Quad Cab and Crew 1500 include 40/40 split-folding rear bench seat trimmed in cloth]		O	O		
— Vinyl 40/20/40 split-bench front seat, [Quad Cab models include folding rear bench seat trimmed in vinyl]	*				
Speed Control	O	*	*	*	*
Steering — Tilt column	*	*	*	*	*
Steering Wheel — 4-spoke, urethane	*	*	*		
— Heated [included with heated seats]				P	P
— Leather-wrapped with remote audio control buttons [included with Luxury Group]		P	P	*	*
Storage — Front seat center cushion [included with *M9 or *VL]		P	P	P	P
— Front, behind seat [Regular Cab only]	*	*	*	*	
— Rear, in-floor storage bins [Crew 1500 models only]		*	*	*	*
— Rear, underseat compartment [Quad Cab and Crew 1500 models only]	*	*	*	*	*
Sunroof — Power [Quad Cab and Crew 1500 models only]		O	O	O	O
Three-Blink — Turn signal lane change feature	*	*	*	*	*
Tip Start — Included with all automatic gas engines	*	*	*	*	*
Visors — Driver and front passenger, with illuminated vanity mirrors [included with Luxury Group]		P	P	*	*
Visors — Front passenger, with mirror		*	*	*	
Windows — Manual [Regular Cab only]	*				
— Power, front and rear w/driver's one-touch down and up [Quad Cab and Crew 1500 models only]	*	*	*	*	*
— Power, front with driver's one-touch down [Regular Cab only] [included with Power Accessories and Power Remote Entry Groups]	P	*	*	*	
— Rear backlight, fixed [included with rear defrost on Quad Cab and Crew 1500 models]	*	P	P	P	P
— Rear backlight, sliding — [Regular Cab only]	O	*	*	*	
— Rear backlight, power sliding [Quad Cab and Crew 1500 models only]	O	*	*	*	*
— Rear defroster [requires fixed rear window]		O	O	O	O

\* = Standard equipment. O = Optional. O/P = Optional, with Package. P = Available within package noted in parentheses. N/A = Not Available

# 2009 DODGE RAM 1500 BUYER'S GUIDE

	ST REG/QUAD	SLT REG/QUAD/CREW	TRX AND TRX4 QUAD/CREW	SPORT REG/QUAD/CREW	LARAMIE QUAD/CREW
PACKAGE DESIGNATIONS	A	G	T	L	H
<b>ENTERTAINMENT SYSTEMS</b>					
Radio — AM/FM radio with CD/MP3 player	•	•	•	•	
— AM/FM/CD/DVD/HDD/MP3 radio; uconnect GPS Navigation; includes SIRIUS® Satellite Radio <sup>12</sup> with real-time traffic alerts and uconnect phone		0	0	0	0
— AM/FM/CD/DVD/HDD/MP3 radio; uconnect tunes		0	0	0	•
— SIRIUS Backseat TV <sup>10</sup> ; included with Rear Seat Video System on Quad Cab® and Crew 1500 only		P	P	P	P
— SIRIUS® Satellite Radio <sup>12</sup>	0	•	•	•	•
— uconnect phone hands-free communication system, included with RER and REN radios, includes auto-dimming rearview mirror		0/P	0/P	0/P	•
Radio Controls — Steering wheel-mounted audio controls (included with leather-wrapped steering wheel)		P	P	•	•
Rear Seat Video System — Includes SIRIUS Backseat TV <sup>10</sup> [N/A with sunroof on Quad Cab; N/A on Regular Cab]		0	0	0	0
Speaker System — 4 premium speakers		0	P		
— Standard	•	•	•	•	
— 10 premium, amplified speakers with subwoofer (included with Sport Premium and Technology Groups)		P	P	P	•
<b>SAFETY AND SECURITY</b>					
Air Bags — Advanced Multistage Front	•	•	•	•	•
— Supplemental side-curtain <sup>11</sup>	•	•	•	•	•
Brakes — Power-assisted 4-wheel antilock disc	•	•	•	•	•
Electronic Stability Program <sup>13</sup> — ESP (Includes ABS, Brake Assist, All-Speed Traction Control, Electronic Roll Mitigation, Hill Start Assist and Trailer Sway Control)	•	•	•	•	•
ParkSense® <sup>15</sup> — Rear Park Assist System (Included with Sport Premium and Technology Groups)		0/P	0	0	•
ParkView® <sup>16</sup> — Rear Backup Camera		0	0	0	0
Remote Keyless Entry — Controls for power door locks, illuminated entry system, panic alarm; includes 2 transmitters		•	•	•	•
Remote Start System — Included with Remote Start and Security Group		P	P	P	•
Security Alarm — Included with Remote Start and Security Group		P	P	P	•
Sentry Key® Theft Deterrent — Engine Immobilizer	•	•	•	•	•
Tire Pressure Monitoring System	•	•	•	•	•
<b>PACKAGE GROUPS</b>					
Luxury Group — Includes overhead console, sun visors with illuminated vanity mirrors, rearview auto-dimming mirror, power heated mirrors (TRX4 and SLT only), Universal Garage Door Opener, <sup>17</sup> glove box lamp, ashtray lamp, underhood lamp, rear dome lamp with on/off switch and leather-wrapped steering wheel		0/P	0	•	•
<b>ACCESSORY OPTION PACKAGES</b>					
— Chrome Tubular Side Steps	0	0	0	0	0
— Chrome Edition Group. Includes Chrome Tubular Side Steps, Chrome Fuel Filler Door and Chrome Exhaust Tip (N/A with dual exhaust)	0	0	0	0	0
— Towing Accessory Group includes Black Aluminum Running Boards, Trailer Tow Mirrors, Heavy-Duty Splash Guards and Slush Mats. Additional Dodge Towing Accessories may be required	0	0	0	0	0
— Cargo Utility Group includes Cargo Bed Divider, Stake Pocket Tie Downs, Pickup Box Utility Rails with Four Adjustable Cleats, and Toolbox (optional). N/A with RamBox <sup>18</sup>	0	0	0	0	0

	ST REG/QUAD	SLT REG/QUAD/CREW	TRX AND TRX4 QUAD/CREW	SPORT REG/QUAD/CREW	LARAMIE QUAD/CREW
PACKAGE DESIGNATIONS	A	G	T	L	H
<b>ACCESSORY OPTION PACKAGES (continued)</b>					
— Chrome Tubular Side Steps and Bed Side Rail Group. N/A with 8-foot box (Late availability)	0	0	0	0	0
— Performance Appearance Group includes Lower Body Kit, Performance-Inspired Hood, Chrome Fuel Filler Door, Bright Pedal Kit and 20-inch Chrome Wheels. N/A on Regular Cab models (Late availability)				0	
Popular Equipment Group — Includes premium cloth 40/20/40 bench seat, fog lamps and 20" painted wheels		0			
Protection Group — 4x4 models only — Includes tow hooks, front suspension and transfer case skid plates	0	0	•	0	0
Regional Groups — Lone Star and Big Horn Groups. Includes Luxury Group, dual rear exhaust, chrome grille with chrome inserts, halogen quad headlamps, fog lamps, 20" x 8" aluminum wheels and unique badging. Requires HEMI® V8 [Crew 1500 only]		0			
Remote Start and Security Group — Includes security alarm and Remote Start System		0	0	0	
Smoker's Group — Includes ashtray and cigar lighter	0	0	0	0	0
Sport Premium Group — Includes dual zone automatic temperature control A/C, premium speaker system and ParkSense® <sup>15</sup> Rear Park Assist System				0	
ST Popular Equipment Group — Includes cloth 40/20/40 bench seat, carpeted flooring, speed control, floor mats and SIRIUS® Satellite Radio <sup>12</sup>	0				
Technology Group — Includes premium speaker system and ParkSense® <sup>15</sup> Rear Park Assist System		0	0		
TRX Group — Includes extra heavy-duty rear shocks			•		

• = Standard equipment. 0 = Optional. 0/P = Optional, with Package. P = Available within package noted in parentheses. N/A = Not Available

<sup>10</sup>Not compatible with all garage door openers. See your retailer for details. <sup>11</sup>One-year subscription included. Not available in AK and HI. <sup>12</sup>Always sit properly in the seat with the seat belt fastened. Children 12 and under should always be in a backseat correctly using an infant or child restraint system or the seat belt positioned correctly for the child's age and weight. <sup>13</sup>No system, no matter how sophisticated, can repeal the laws of physics or overcome careless driving actions. Performance is limited by available traction, which snow, ice and other conditions can affect. When the ESP warning lamp in the speedometer flashes, the driver needs to use less throttle and adapt speed and driving behavior to prevailing road conditions. Always drive carefully, consistent with conditions. Always wear your seat belt. <sup>14</sup>Always check entire surroundings before backing up. NOTE: Some features and/or applications may be late availability.

About this catalog: Since the time of printing, some of the information you'll find in this catalog may have been updated. Ask your dealer for details. Some of the equipment shown or described throughout this catalog is available at extra cost. Specifications, descriptions, illustrative materials, and all competitive comparisons contained herein are as accurate as known at the time this publication was approved for printing. Chrysler LLC reserves the right to discontinue models at any time or change specifications without notice or without incurring obligation. All options are required in combination with other options. For the price of the model with the equipment you desire, or verification of specifications contained here, see your Dodge dealer. BusinessLink, Dodge, Quad Cab, HEMI, Magnum, Mopar, ParkSense, ParkView, Power Wagon, Sentry Key, SRT, SRT8, uconnect, and VES are registered trademarks of Chrysler LLC. "SIRIUS," the SIRIUS dog logo "SIRIUS Backseat TV" and related marks are trademarks of SIRIUS Satellite Radio Inc. All other trademarks, service marks and logos are the property of their respective owners. All rights reserved. Prices and programming content are subject to change. Not available in Alaska and Hawaii. For full terms and conditions, visit SIRIUS.com. ©2008 Viacom International Inc. All rights reserved. Insurance is underwritten by member companies of American International Group, Inc. Bluetooth is a registered trademark of Bluetooth SIG Inc. HomeLink is a registered trademark owned by Johnson Controls, Inc. The Dodge Rewards Visa credit card is issued by FIA Card Services, N.A.

dodge.com • 800-4ADODGE

# 2009 DODGE RAM 1500 BUYER'S GUIDE

## MAXIMUM LOADED TRAILER WEIGHT (LB)

				1500									
				REGULAR CAB				QUAD CAB®		CREW 1500			
				SB 4x2	SB 4x4	LB 4x2	LB 4x4	SB 4x2	SB 4x4	SB 4x2	SB 4x4	RB 4x2	RB 4x4
Automatic Transmission	Engine	Axle Ratio	GCWR (lb)										
				3.7L V6	3.55	8,500	3,800						
		3.92	8,500	3,800		3,650		3,450					
	4.7L V8	3.55	10,500	5,550	5,350	5,450	5,200	5,250	5,000	5,200	4,950	5,100	4,850
		3.55	11,500	6,650	6,350	6,550	6,250	6,300	6,050	6,250	6,000	6,150	5,900
		3.92	12,500	7,650	7,350	7,550	7,250	7,300	7,050	7,250	7,000	7,150	6,900
	5.7L HEMI® V8	4.10	10,000	5,000									
		3.21	11,000	6,100		6,000		5,800		5,700		5,600	
		3.55	12,000	7,000	6,800	6,900	6,650	6,700	6,450	6,650	6,250	6,550	6,150
		3.55	13,000	8,100	7,800	8,000	7,700	7,800	7,500	7,700	7,450	7,600	7,350
		3.92	14,000	9,100	8,800	9,000	8,700	8,800	8,500	8,700	8,450	8,600	8,350

## MAXIMUM PAYLOAD CAPACITIES (LB)

			1500									
			REGULAR CAB				QUAD CAB		CREW 1500			
			SB 4x2	SB 4x4	LB 4x2	LB 4x4	SB 4x2	SB 4x4	SB 4x2	SB 4x4	RB 4x2	RB 4x4
Automatic Transmission	Engine	GVWR										
			3.7L V6	6,025	1,480							
		6,600			1,910							
		6,700					1,820					
	4.7L V8	6,025	1,320									
		6,350		1,370								
		6,600			1,800	1,500						
		6,700					1,660	1,420				
		6,800							1,720	1,470	1,620	1,380
	5.7L HEMI® V8	6,200	1,450									
		6,350		1,320								
		6,600			1,750	1,450						
6,700						1,670	1,370					
	6,800							1,670	1,430	1,580	1,330	

SB = Short Box LB = Long Box RB = RamBox

Maximum towing capacities shown with properly equipped vehicle and 150-lb driver. Options, equipment, cargo and passengers must be deducted. For more information, see your Dodge dealer.



The Dodge Ram 1500 includes a Lifetime Powertrain Limited Warranty. No deductible. See dealer for a copy of the Limited Warranty details.

Non-Transferable. Not available on SRT™ diesel vehicles, Sprinter, Ram Chassis Cab, Hybrid System components (including transmission), and certain fleet vehicles.

**3/36 BASIC LIMITED WARRANTY** All Dodge vehicles are covered by the Chrysler 3-year/36,000-mile Basic Limited Warranty. See dealer for a copy of this Limited Warranty. Excludes normal maintenance and wear items.



Chrysler Financial delivers Chrysler, Jeep, and Dodge customers a personal, worry-free automotive financing experience. More than just another finance company with competitive rates, Chrysler Financial stands behind you through life's twists and turns by offering fast approvals, flexible terms and unparalleled personalized service. Visit [cf.com](http://cf.com) or your Dodge dealer to discover all that Chrysler Financial offers. Taking care of you, all along the way.



The only insurance guaranteed to repair your vehicle using Authentic Dodge Collision Repair Parts by Mopar for as long as you own your Dodge vehicle, and up to \$100 off your deductible when those repairs are done at a Dodge dealership — all at rates that are tough to beat. For a free quote, visit [dodgeautoinsurance.com](http://dodgeautoinsurance.com) or call 800-836-1598 and mention keyword QL9XXX.



If your business relies on vehicles, Dodge BusinessLink® can save you time, money and hassles. For more, log on to [dodge.com/businesslink](http://dodge.com/businesslink) or call us toll-free at 877-2THELINK [877-284-3544]



Your Dodge truck is one of the most capable vehicles on the road. Why not protect your investment with a Chrysler Service Contract or Maintenance Plan? For more information, see your Dodge dealer, call 1-800-442-2666 or visit [servicecontracts.chrysler.com](http://servicecontracts.chrysler.com).



Enhance your Dodge Ram with Authentic Dodge Accessories by Mopar. They're designed specifically for your vehicle, for exceptional fit, finish and performance. Visit your dealership or [mopar.com](http://mopar.com).



This suite of integrated digital systems bundles entertainment, information and communication. For more information, visit your dealer.



SIRIUS Satellite Radio delivers over 130 channels, including 100% commercial-free music, sports, news, talk, entertainment, traffic and weather. Factory-installed SIRIUS Satellite Radio includes a one-year subscription. For more information, go to [SIRIUS.com](http://SIRIUS.com).



SIRIUS Backseat TV™ features the best brands in family entertainment 24/7: Nickelodeon, Disney Channel and Cartoon Network Mobile — plus all your favorite SIRIUS Satellite Radio audio entertainment. It's perfect for families on the go. All three channels are directly broadcast to the SIRIUS tuner and sent to your backseat video monitor(s). For added flexibility, rear-seat passengers can enjoy SIRIUS Backseat TV while front-seat occupants listen to SIRIUS Satellite Radio. Enjoy car trips with the family and never again be asked, "Are we there yet?"



Earn 5 points per dollar charged at your Dodge dealership and 1 point per dollar everywhere Visa® is accepted. Whether you're saving points for your down payment or for your vehicle's scheduled maintenance, it pays to be a Dodge Rewards Visa cardholder. For more information or to apply, visit [dodgecreditcard.com](http://dodgecreditcard.com) or call 800-478-6179.



The Dodge Goods catalog is a handpicked collection of items bearing the powerful Dodge name — from Motorsports apparel and collectible die-cast models to the latest in work and ranch wear. It's all found at [dodge.com/goods](http://dodge.com/goods). Call 877-789-DODGE [3634] for a free catalog.



Honoring Those Who Serve. Chrysler LLC proudly supports the members of the U.S. Armed Forces and their families.

DRIVE ON.



Laramie Crew 1500 shown in two-tone Inferno Red Crystal Pearl and Light Graystone Pearl.

## A HISTORY OF MAKING HISTORY.

Time after time, the family of Dodge Ram pickups becomes stronger, safer, more powerful and comfortable — and more efficient. Test-drive the Ram model of your choice at your Dodge dealer.



25,000 BC - Mastodonus



1807 - Mule Team and Leaf-Spring Wagon



1920's Era - First Dodge Truck



1946 - Dodge Power Wagon<sup>®</sup>



1994 - Dodge Ram



2009 - All-New Dodge Ram 1500