

We  
questioned  
everything.



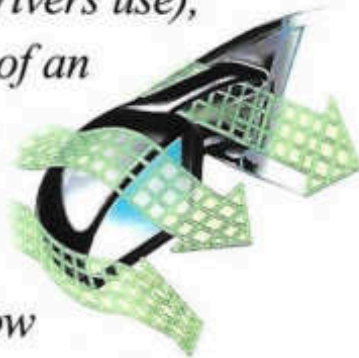


**This is the answer.** *Proven cab-forward design that provides 111.6 cubic feet of total combined space for passengers and cargo.*



*Racing-inspired performance features including a fully independent, double-wishbone suspension, speed-sensitive steering, and rigid straight-rail chassis design.*

*AutoStick® and available V6 engine on ES models that combine to produce the control and sheer fun of “clutchless” manual shifting (like Formula One drivers use), with the convenience of an automatic. And design*



*innovations like side mirrors that improve visibility by managing airflow to redirect rain from the glass area. It all raises the question: Which sleek, wide-stanced, wheels-to-the-corner sedan has the handling, stability and style that make each moment behind the wheel a decided pleasure? You know the answer.*

Stratus  The New Dodge





# We factored in

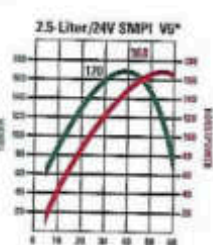
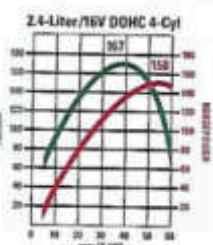
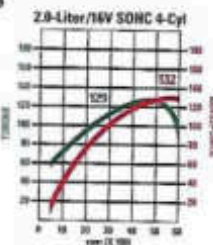


An available 2.5-liter SOHC 24-valve V6\* engine delivers

168 horsepower and 170 pound-feet of torque for the sort of acceleration you would expect. You can also choose between a standard

2.0-liter four-cylinder engine and an optional 2.4-liter four-cylinder engine.

\*Built by Mitsubishi Motors Corporation

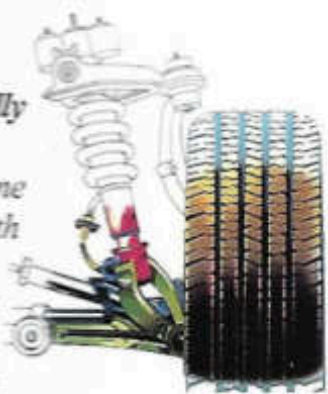


Available AutoStick® offers both automatic and manual shifting in one neat handful. Now you can hold gears longer for better acceleration, tap down a gear to set up the next curve, or place the gear in overdrive — and go.

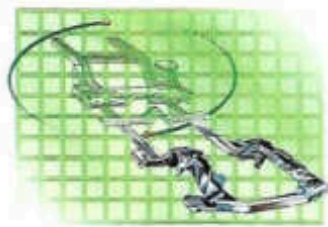


# ne thrill factor.

eel fully  
dent,  
ishbone  
ion with  
d rear  
r bars:  
ful to  
, but a  
o drive.



*The straight-rail underbody design for Stratus has the tensile rigidity to make a strong, secure, and satisfying connection between driver, vehicle, and road.*



**DODGE**  
**Skip Barber**  
DRIVING SCHOOL

The Dodge/Skip Barber Driving

*School and Skip Barber Racing School have chosen Dodge as the exclusive supplier of vehicles and engines for all their teaching and racing operations. For information, call 1-800-221-1131, e-mail [speed@skipbarber.com](mailto:speed@skipbarber.com) or visit the Web site at [www.skipbarber.com](http://www.skipbarber.com).*





*Aerodynamic twin-post exterior mirrors direct airflow to reroute rain for improved side window visibility in heavy weather.*

# Look

*Stratus sound system options include AM/FM stereo radio, and CD and cassette player combinations, with three-band graphic equalizer. For hours of your favorite background music, consider an optional Mopar remote six-disc CD changer. (See page 14 for specific availability.)*



*The Stratus interior is a textbook definition of superb ergonomics. Every control is within fingertip reach, while illumination for available power window and door lock switches guides your hand at night.*



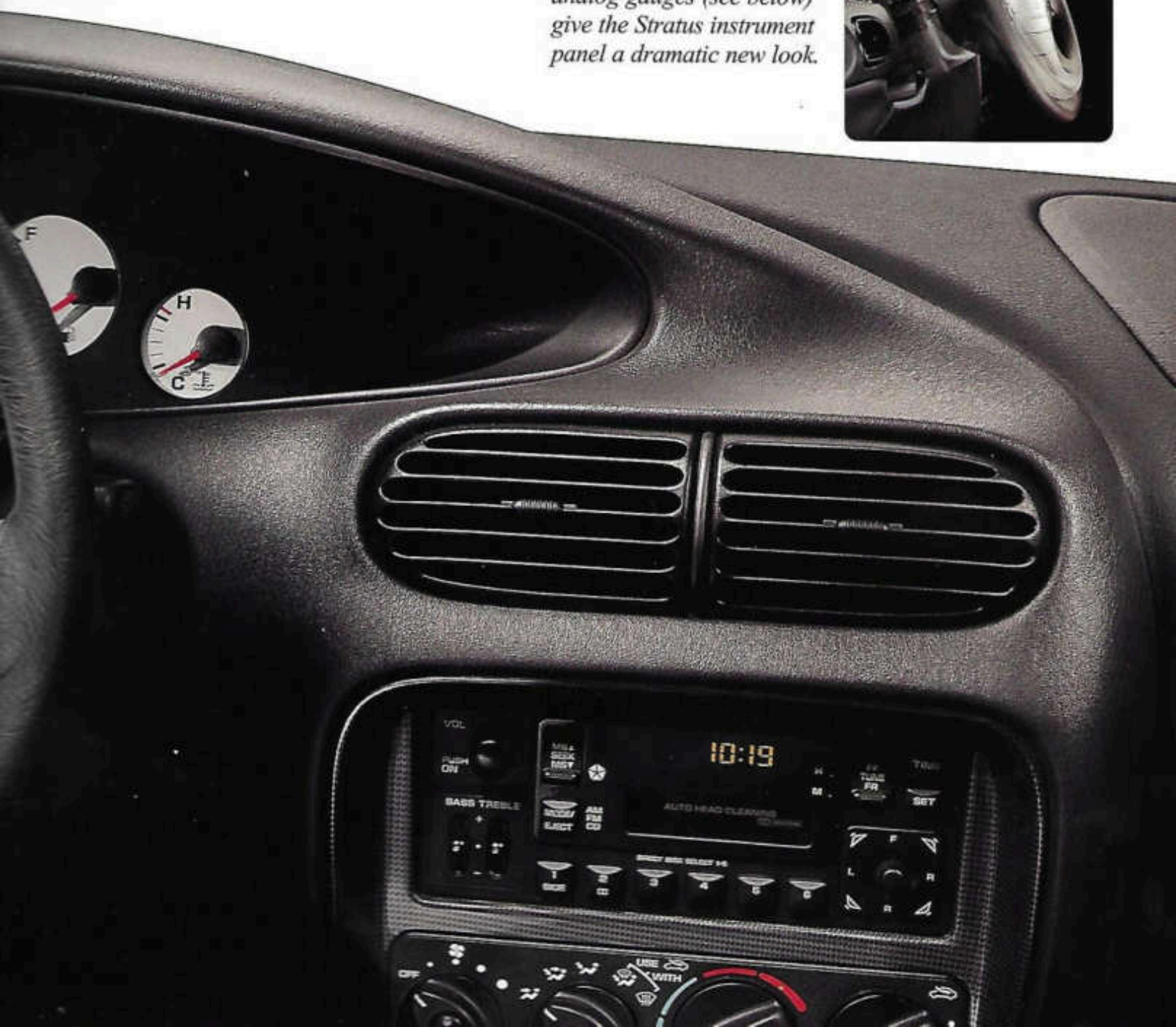
# Out.



*A steeply raked windshield sweeps upward at an angle that vastly broadens your view even while it lets Stratus slice through wind resistance, keep down fuel costs, and keep a tight grip on the road.*

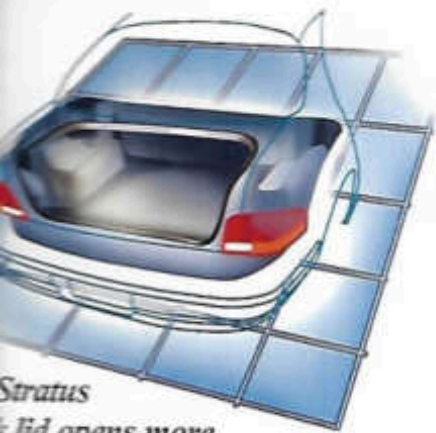


*The standard height-adjustable steering column can be positioned for each individual driver's comfort and control. Distinctive white analog gauges (see below) give the Stratus instrument panel a dramatic new look.*









**Stratus**

**Trunk lid opens more**  
**90 degrees** to reveal 15.7  
 feet of storage space. Lower  
 load, and recessed hinges leave  
 space untouched. Add 95.9  
 feet of interior volume for a  
 total of 111.6 cubic feet, accessible  
 through both the trunk and the side  
 door, and fit for every combination  
 of business and pleasure.

Always secure all cargo before transporting.



**Wheels-to-the-**  
**corners, cab-**  
**forward design,**  
 a breakthrough concept  
 the team at Dodge, adds  
 more than stability — it adds space.

Interior Room	
Trunk room front/rear (in)	38.1/36.8
Trunk room front/rear (in)	42.3/38.1
Trunk room front/rear (in)	52.8/52.7
Trunk room front/rear (in)	55.2/54.7
Trunk load capacity	5
Trunk load volume (cu ft)	95.9
Trunk load volume (cu ft)	15.7

# Stow



# Away.



*A locking pushbutton, conveniently located on the interior rear shelf, allows the rear seat to be folded down, combining both trunk and cabin space, and permitting easy loading of Stratus from inside the vehicle.*

*The driver is in full command of comfort. Computer-aided engineering has identified and eliminated "high pressure" points, while a hand-operated, telescoping seat height adjustment handle and manual lumbar support make even the longest ride a trip down easy street.*





*Stratus body construction has the structural rigidity necessary to meet federal dynamic side-impact standards. Steel side-guard door beams, front and rear, help absorb energy during side-impact collisions.*



*Safety first, last, and always. Standard child-protection rear door locks allow the rear doors to be opened only from the outside when the selector lever is engaged.*



# Trust com

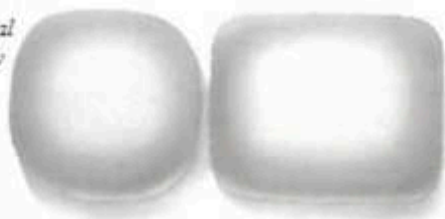


*Standard 5-position height-adjustable front seat shoulder belts with comfortable traveling inboard buckles for both driver and front-seat passenger are just another example of the Stratus user-friendly approach to safety.*



Generation driver and front-passenger air height-adjustable front-seat shoulder belts and seat belt lockers are among the standard safety features in Stratus.

Compliant with the Federal Motor Vehicle Safety Standards that allow for side-impact protection. Remember a child seat is the safest for children.



Available four-wheel disc antilock brake system\* allows steadiness and control, when driving situations make quick, reliable braking an absolute must.

\*Available only with the optional V6 engine.



# s standard.

An available Security Group, standard on Stratus ES, includes remote keyless entry, illuminated entry, panic alarm and a headlamp timed delay. A vehicle theft security alarm is also available. A new Sentry Key™ Engine Immobilizer System allows Stratus to be started only with the use of one of the two supplied Sentry Keys.



# Standard features and options.

## Stratus models include:

**Air Bags\*** — Next Generation driver and front-passenger  
**Conditioning** — Manual temperature controls  
**Wheels** — Power, front disc/rear drum  
**Radio Control Outlets** — Rear, beneath front seats  
**Radio** — Digital, integral to all radios  
**Console** — Center with storage armrest and cubby bin  
**Seat Holders** — Front (2) rear (2) stowable  
**Power Window** — Electric rear window  
**Door Locks**  
 — Manual  
 — Child-protection rear  
**Brake System** — Long life, stainless steel  
**Floor Mats** — Front, carpeted  
**Windows** — Tinted, all windows including solar windshield

**Instrument Cluster** — Analog, includes tachometer  
**Power Accessory Outlet** — 12-volt, located in instrument panel  
**Seats**  
**Front** — Low back buckets with reclining seatbacks and adjustable head restraints  
**Rear** — Bench seat with folding seatback  
**Shoulder Belts** — Height-adjustable front outboard with traveling buckles  
**Sound System** — AM/FM stereo radio with cassette player and 6 speakers  
**Steering Column** — Height-adjustable  
**Sun Visors** — Dual  
**Suspension** — Modified double-wishbone, front high-arm with sway bar; rear, low-arm multilink with sway bar  
**Tires** — Spare, compact  
**Trunk Lid Release** — Remote  
**Wiper System** — Windshield 2-speed with speed-sensitive intermittent mode

\*Certified to the Federal Regulations that allow less forceful air bags. Always use seat belts. Remember a backseat is the safest place for children.

• = Included. P = Available within package noted in parenthesis. O = Optional.

## Features, options and package groups.

	Stratus		ES	
<b>Engine</b>				
4-liter SOHC 16V 4-Cylinder	5-speed Manual	21A	21B	
4-liter DOHC 16V 4-Cylinder	4-speed Automatic	24A	24B	
4-liter SOHC 24V V6*	4-speed AutoStick*			26R 26S
<b>Roof Rack</b> — Overhead for front and rear passengers (included with optional sunroof on Stratus)			P	•
<b>Wheels</b> — Power, front disc/rear drum with antilock	O	O	•	•
— Power 4-wheel disc with antilock			•	•
<b>Trunk Net</b> — Located in trunk			•	•
<b>Cold Weather Group</b> — Engine block heater and battery heater	O	O	O	O
<b>Door Locks</b> — Power, includes auto speed-sensitive feature			•	•
<b>Floor Mats</b> — Rear, carpeted			•	•
<b>Lighting</b>				
— Interior — Fog lamps			•	•
— Exterior — Dual front map lamps with courtesy function (included with optional sunroof on Stratus)		P	•	•
<b>Map Pocket</b> — Passenger seatback			•	•
<b>Interior Mirrors</b>				
— Driver — Dual manual remote control, twin-post	•	•	•	•
— Passenger — Dual power heated, twin-post			•	•
— Driver — Dual covered visor vanity	•	•	•	•
— Passenger — Dual illuminated covered visor vanity (included with optional sunroof on Stratus)		P	•	•
<b>Seat Mats</b>				
— Driver — Scroll cloth	•	•	•	•
— Passenger — Jigsaw cloth			•	•
— Driver — Wanderer leather-trimmed			•	•
— Passenger — Driver-side manual seat-height adjuster	•	•	•	•
— Driver — Driver-side manual seat-height adjuster and lumbar support			•	•
— Passenger — 3-way power driver				•
<b>Security Group</b> — Remote keyless entry, illuminated entry, panic alarm and headlamp time delay		O	O	•
<b>Smoker's Group</b> — Ashtray and lighter	O	O	O	O
<b>Sound Systems</b>				
— Premium AM/FM stereo radio with CD player, 3-band graphic equalizer and 6 speakers	O	O		
— Premium AM/FM stereo radio with cassette player, changer controls, amplifier and 8 speakers in 6 locations	O	O	O	•
— Premium AM/FM stereo radio with cassette player, changer controls, in-dash 6-disc CD changer and 6 speakers	O	O	O	O
<b>Speed Control</b> — Electronic with steering wheel-mounted controls	• <sup>1</sup>	• <sup>2</sup>	•	•
<b>Steering</b> — Power-assisted rack-and-pinion			•	•
— Speed-sensitive, power			•	•
<b>Sunroof</b> — Power (includes premium headliner on Stratus)		O	O	O
<b>Tires</b> — P195/70R14	•	•	•	•
— P195/65R15, all-season			•	•
— Spare, full-size	O	O	O	O
<b>Vehicle Theft Security System</b> — Monitors door, ignition and trunk key cylinders and includes Sentry Key™ Engine Immobilizer			O	O
<b>Wheels</b> — 14" x 6" steel with wheel covers	•	•	•	•
— 15" x 8" aluminum wheels			•	•
<b>Windows</b> — Power with driver's one-touch-down feature			•	•

# Colors, models, accessories, wheels, and trim.



*Flame Red*



*Inferno Red*



*Deep Cranberry*



*Deep Amethyst*



*Deep Slate*



*Stone White*



*Bright Platinum*



*Champagne*



*Light Cypress Green*



*Forest Green*

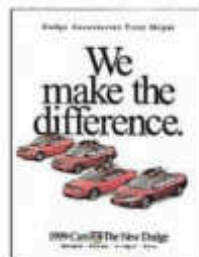
## Models



*Stratus ES*



*Stratus*



## Accessories

High-quality Dodge Accessories from Mopar are specially designed by Dodge engineers to fit your Stratus exactly. For information on Mopar comfort, convenience and appearance accessories, ask your dealer for a copy of the brochure shown here.

## Wheels and Wheel Covers

A 14" steel wheel with wheel covers standard on Stratus

B 15" 5-Spoke cast aluminum road wheel standard on Stratus ES

A



B



## Fabric and Trim

Dodge Stratus' selection of interior seat coverings includes (from left to right): Scroll Cloth, standard on Stratus (shown in Agate, also available in Camel or Silver Fern); Jigsaw Cloth, standard on Stratus ES (shown in Silver Fern, also available in Agate or Camel); and Leather seating surfaces with vinyl trim, optional on Stratus ES only (shown in only available color, Agate).



# We'd like to continue this relationship.

Us At: 1-800-4-A-DODGE  
Talk to someone who can tell  
you what you want to know about  
the 1999 Dodge lineup. You can  
order product literature, get the  
specifications of a vehicle equipped the way  
you like it, and find the Dodge  
dealer closest to you.

On the Web: [www.4adodge.com](http://www.4adodge.com)  
Our award-winning Dodge Web site  
provides you with an information  
service you can access directly  
24 hours a day from the comfort  
of your home or office. Pricing,  
competitive comparisons, and dealer  
information are just a click away.

## CustomerOne<sup>®</sup> ★

Chrysler Corporation and its  
dealers have made a long-term  
commitment to outstanding  
customer service. More than  
100,000 dealership management,  
sales and service people are  
participating in the most extensive  
educational initiative in automotive  
history. It's called Customer One  
and it establishes one unbreakable  
rule: Treat every customer with the  
honesty and respect they deserve.

**3/36 Customer One Care<sup>™</sup> Plan**  
Your Dodge vehicle is covered  
by Chrysler Corporation's 3/36  
Customer One Care Plan.\*

### CustomerOne Care<sup>™</sup>

3/36 Bumper-To-Bumper

24-Hour Roadside Assistance

This  
coverage  
includes  
a 3-year  
or 36,000-

mile Bumper-To-Bumper Limited  
Warranty as well as roadside  
assistance for 3 years or 36,000  
miles. Call 1-800-521-2779 for  
24-hour, 7-day-a-week emergency  
road service.<sup>†</sup> A 5-year or 100,000-  
mile Outer-Panel Rust-Through  
Limited Warranty covers the repair  
of exterior sheet metal if perforated  
by corrosion. Restrictions apply.  
See your dealer for details.

\*Excludes wiper blades, clutch and brake linings, brake rotors  
and drums, normal maintenance items and tires (covered by their  
own manufacturer's warranty).

<sup>†</sup>Road service provided by Cross Country Motor Club, Inc.  
(In California, Cross Country Motor Club of California, Inc.)



STYLES  
*Service Contracts*

*... Serious About Service  
... Additional protection for Dodge  
... owners is available through  
... Optional Chrysler Service Contracts.  
... The service plans are available  
... in a variety of time and mileage  
... combinations to meet your driving  
... needs. Ask your dealer for more  
... information or call 1-800-442-2666.*

**Mopar** *To keep your  
CUSTOMER CARE Dodge vehicle  
performing at its optimum, make  
it's serviced regularly at your  
Dodge dealership, where highly-  
trained technicians have access to a  
complete stock of Mopar replacement  
parts and the sophisticated equipment  
of today's cars demand.*

**CHRYSLER FINANCIAL** *Chrysler  
Financial\**

*offers a full range of automotive  
financing which provides flexible  
terms for qualified buyers. Many of  
these plans can be customized  
to fit your particular budget and  
make your new vehicle even more  
affordable. They include the College  
Graduate Program and Gold Key  
Lease short-term financing. Ask  
your Sales Consultant for details.*

\* Chrysler Financial's programs are offered subject to availability  
and state and local laws.

**Chrysler Lease Plans**

*Chrysler Financial's Gold Key  
Lease has the flexibility to fit your  
vehicle choice and your lifestyle.  
If the idea of driving a new vehicle  
more often without penalties sounds  
great, ask about Gold Key Lease.*



**ON THE JOB** *Commercial  
operators  
of eligible*

*Dodge cars, trucks, and vans  
can learn about our Dodge "On  
The Job" program by calling  
1-877-ON THE JOB.*

**Commercial Finance Options**

*Chrysler Financial's new  
Commercial Finance Options  
Program offers special finance and  
lease options to small and midsize  
businesses, municipalities, and  
small fleet operators. "Line of  
Credit" financing is also available  
under this program. Please see  
your dealer for details.*



**CHRYSLER CORPORATION**

*Cash reimbursement  
is available for  
qualified adaptive  
driving devices  
on 1999 Dodge  
vehicles. Ask your  
dealer or call Automobility  
Headquarters at 1-800-255-9877.*

Printed in U.S.A. on recycled paper.  
898 74-383-9918 240M



**The New Dodge**



# We're all about change.

*There is no status quo at Dodge. We've transformed the way people drive with new kinds of vehicles that are an embodiment of the latest technologies. Alternate fuels, exotic materials, and new configurations are constantly being explored. Advances in safety technology, suspension systems, engine dynamics, and ergonomics are continually evaluated. Because we know that no matter how fast things change these days, people still want cars and trucks that are good looking, well-built, and exciting to drive. And to ensure that you get all the information you need to make an intelligent purchase, there are automotive experts awaiting your call at 1-800-4-A-DODGE. We've also created a Web site you can visit at anytime from anywhere in the world at: [www.4adodge.com](http://www.4adodge.com).*



The New Dodge