

*HOW TO
LIVE
LARGE
IN A
CROWDED
WORLD*

THE NEWLY REDESIGNED FIAT® 500L KNOWS HOW TO MAKE THE MOST OF THE MOMENT — ITS ACCOMMODATING FOUR DOORS, FLEXIBLE SEATING DESIGN AND ROOMY INTERIOR ARE NOW EVEN MORE INVITING FOR FAMILY AND FRIENDS. THE 500L MAGICALLY MIXES THIS SPACIOUSNESS WITH EXCEPTIONAL PEP AND AGILITY, THANKS TO ITS UNIQUE, URBAN-FRIENDLY PROPORTIONS.



Canadienne

SPACIOUSLY NIMBLE

FIAT® 500L offers up 68 cubic feet of maximum cargo volume (with the rear seats tumbled forward) and 98.8 cubic feet of total interior volume — so you can bring everything and everyone you want on your latest adventure. Its super-versatile “floating” roof design helps create its signature spacious feeling, and is available in body-color, Black, or White color options. Let the sky in on your trip with the available dual-pane power sunroof with sunshade.

FIAT® 500L Trekking shown with Black premium leather seats.

POP

- 1.4L MultiAir® Turbo I-4 — 160 hp/184 lb-ft of torque with 6-speed automatic with AutoStick
- Body-color door moldings, with Black inserts
- Chrome exterior accents
- Projector headlamps
- Electronic Vehicle Information Center (EVIC)
- Silver vinyl-wrapped instrument panel
- Premium cloth bucket seats
- 60/40 split-folding rear seats with Tilt, Tumble & Slide function
- Multi-position cargo panel
- Uconnect® 4 with 7-inch touchscreen display
- Apple CarPlay™¹* iPhone® integration
- Android Auto™² smartphone compatibility
- Integrated Voice Command⁴ with Bluetooth®
- Leather-wrapped steering wheel with audio and cruise controls
- Power heated exterior mirrors in body-color
- ParkView® Rear Back-Up Camera³
- Tire Pressure Monitoring System
- Accent roof in Nero or Bianco — Available

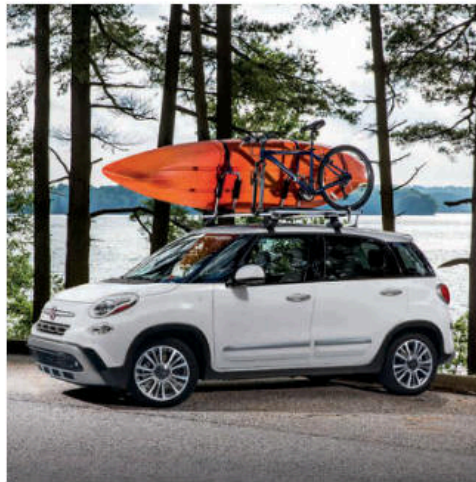
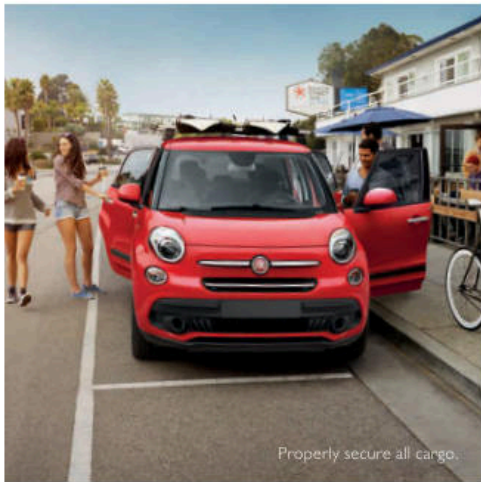
TREKKING

- 1.4L MultiAir Turbo I-4 — 160 hp/184 lb-ft of torque with 6-speed automatic with AutoStick
- Body-color side door moldings with Satin Silver insert
- Rugged-design bottom cladding and wheel arches
- Satin Silver exterior accents
- Projector headlamps and fog lamps
- Textured-painted instrument panel
- Premium leather-trimmed seats
- Heated front seats
- 60/40 split-folding rear seats with Tilt, Tumble & Slide function
- Ambient LED interior lighting
- Uconnect 4 NAV with 7-inch touchscreen display and GPS Navigation
- Integrated Voice Command⁴ with Bluetooth
- BeatsAudio™ Premium Sound System
- SiriusXM® Satellite Radio⁵
- SiriusXM Traffic Plus⁵ and SiriusXM Travel Link⁵
- Apple CarPlay™¹ iPhone integration
- Android Auto™² smartphone compatibility
- ParkView Rear Back-Up Camera³
- Dual-pane power sunroof — Available
- Accent roof in Nero or Bianco — Available

LOUNGE

- 1.4L MultiAir® Turbo I-4 — 160 hp/184 lb-ft of torque with 6-speed automatic with AutoStick
- Body-side door molding with chrome insert
- Chrome exterior accents
- Power heated exterior mirrors in Chrome
- Dual-Zone Automatic Temperature Control (ATC)
- Ambient LED interior lighting
- Rearview auto-dimming mirror
- Power 2-way driver lumbar adjuster
- Manual 2-way passenger lumbar adjuster
- Premium leather-trimmed seats
- Heated front seats
- Wrapped instrument panel with leather appearance
- Leather-wrapped steering wheel with audio and cruise controls
- 60/40 split-folding rear seats with Tilt, Tumble & Slide function
- Uconnect® 4 NAV with 7-inch touchscreen display and GPS Navigation
- Integrated Voice Command⁴ with Bluetooth®
- SiriusXM® Satellite Radio⁵
- SiriusXM Traffic Plus⁵ and SiriusXM Travel Link⁵
- Apple CarPlay™¹ iPhone® integration
- Android Auto™² smartphone compatibility
- BeatsAudio™ Premium Sound System
- ParkView® Rear Back-Up Camera³
- ParkSense® Rear Park Assist System³
- Dual-pane power sunroof — Available
- Accent roof in Nero or Bianco — Available

Go to fiatusa.com for more exciting FIAT® 500L highlights.





Get More with Mopar®

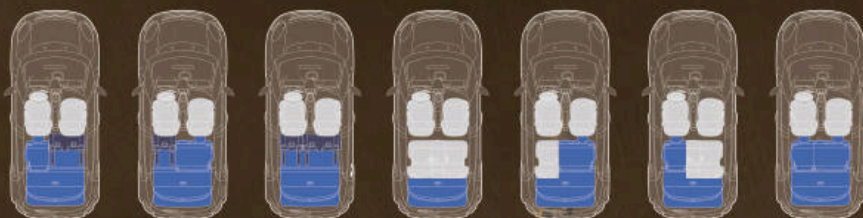
With the authentic accessories offered by Mopar, you can personalize your FIAT® 500L even more. Choose from bodyside, hood and roof graphics, equipment carriers, protective covers, storage systems and more. Each accessory has been created to make your ride work better for you. See a complete listing of available accessories at Mopar.com

*FIAT® 500L
GIVES YOU THE
POWER TO
GO WITH
YOUR IMPULSES.*

FIAT 500L keeps everyone entertained with innovative amenities and a peppy driving style, powered by the award-winning and innovative 1.4L 16V MultiAir® Turbo engine that delivers 160 horsepower and 184 lb-ft of torque. Its 6-speed automatic transmission with AutoStick delivers fast upshifts and corner-conquering downshifts. With its unique, effortless Italian style and hundreds of available options, the 500L will not only fit your day-to-day cargo — it will accommodate your spontaneous side, too.



FIAT® 500L Trekking shown in Giallo with Roof-Mount and Surf and Paddle Board Carrier (mounts to the Removable® Cross Bars, sold separately). Properly secure all cargo.



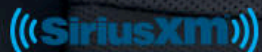
Super-flexible seating configurations mean your passengers get as much consideration as your belongings. Packing is practically effortless and incredibly efficient with 60/40 split-folding seats and the Tilt, Tumble & Slide function. Of course, your companions will be the ones to rave about the room.

Paying homage to a long history of FIAT® innovation and original solutions to spatial design, the 500L builds on traditional FIAT cues with its small-wide architecture. This is the foundation for the vehicle's open, loft-like interior featuring glass-framed A- and D-pillars that support one of the largest sunroofs around — a “floating” roof that provides spectacular 360-degree views.



SIRIUSXM® SATELLITE RADIO⁵

You get every channel offered on this available satellite radio, including news, commercial-free music, sports, talk and entertainment. Plus listen wherever you go on your portable devices with the SiriusXM app⁵ (one-year trial subscription included). Enrich your travel experience with available SiriusXM Travel Link⁵ and SiriusXM Traffic Plus⁵ (5-year plans included): hear about the latest weather, gas prices, movie listings and detailed traffic stats.



APPLE CARPLAY™¹

A smarter, safer way to use an iPhone[®] inside your vehicle and seamlessly integrate it with the Uconnect[®] touchscreen and Siri[®] voice control. You can make calls, access music, send and receive messages,¹⁰ get directions optimized for traffic conditions and more while staying focused on the road.



ANDROID AUTO™¹²

Automatically provides a safer way to use Android while driving, sharing information while you easily access the best of Google: Maps with voice-guided navigation and Play Music; place phone calls or send and receive messages,¹⁰ and ask Google Search any question by voice command.⁴





Uconnect®

ITS INTERIOR OFFERS 360° VIEWS WHILE TECH-Y FEATURES GIVE YOU EVEN MORE INSIGHT.

FIAT® 500L features the next-generation Uconnect® 4 along with the available Uconnect 4 NAV, both with a 7-inch touchscreen display and the Integrated Voice Command⁴ with Bluetooth® Plus, Android Auto™² smartphone capability and Apple CarPlay™¹ integration offer seamless connectivity with your personal device. The Uconnect 4 NAV features GPS navigation with intuitive map graphics, a 5-year subscription to SiriusXM® Traffic Plus⁵ and SiriusXM Travel Link⁵ and a 1-year subscription to SiriusXM Satellite Radio⁵. Enjoy hands-free⁴ calling with your Bluetooth-enabled phone, streaming audio and text message delivery⁹. They all work to enhance awareness of what's going on inside and out. For tunes, the available BeatsAudio™ Premium Sound System brings its audio expertise to enhance the 500L experience. All because FIAT 500L knows the little things really are a big deal after all.

  beatsaudio.

FIAT® 500L Exterior and Roof Colors*

Hues that say “arrivederci” to boring.



NERO (Black)
White and Body-Color Roof



GRIGIO CHIARO (Graphite Metallic)
Body-Color and Black Roof



GRIGIO SCURO (Gray Metallic)
White and Body-Color Roof



GIALLO (Yellow)
White, Body-Color and Black[†] Roof



ARANCIA PASTELLO (Pastel Orange)
Body-Color and Black[†] Roof



BLUE TORNADO
White, Body-Color and Black[†] Roof



ROSSO (Red)
White, Body-Color and Black Roof



VERDE BOSCO PERLA (Forest Green Pearl)
White and Body-Color Roof



BRONZO METALLIZATO (Bronze Metallic)
Body-Color and Black[†] Roof



BIANCO (White)
Body-Color and Black[†] Roof



BLU DENIM (Graphite Metallic)
White, Body-Color and Black[†] Roof

*Not all exterior colors are available on all trim levels — please consult with a representative at your local FIAT dealer for complete details.
[†]Packaged with Urbana Appearance Package on Trekking models.



FIAT® 500L Lounge shown with Carrera Gray premium leather seats.

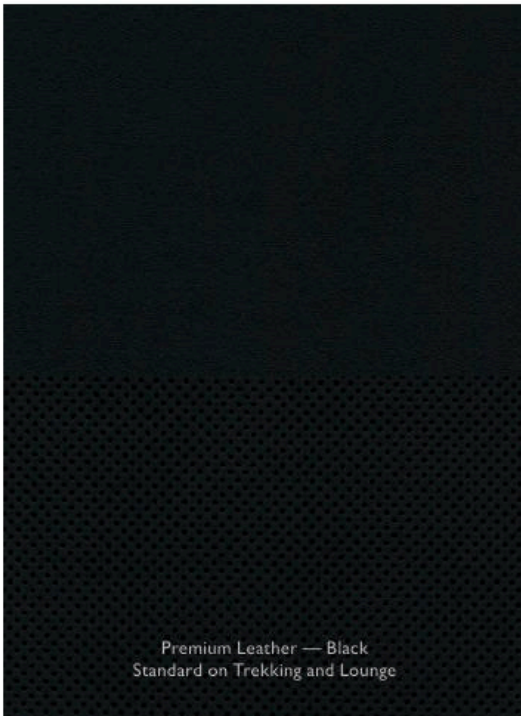
FIAT 500L Interior Colors



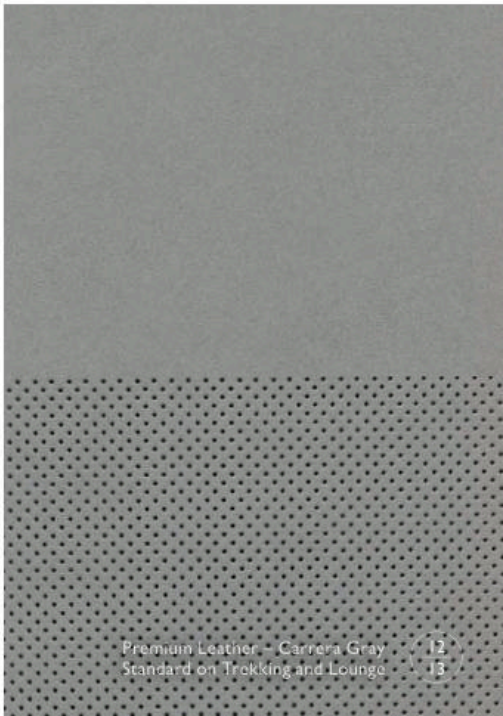
Cloth — Dark Slate Gray
Standard on Pop



Cloth — Warm Gray
Standard on Pop



Premium Leather — Black
Standard on Trekking and Lounge



Premium Leather — Carrera Gray
Standard on Trekking and Lounge

FIAT® 500L Specifications

	POP	TREKKING	LOUNGE
ENGINE			
1.4L MultiAir® Turbo I-4	•	•	•
TRANSMISSION			
6-speed automatic	•	•	•
MECHANICAL FEATURES			
Alternator — 150-amp	•	•	•
AutoStick Automatic Transmission	•	•	•
Battery — 500-amp, maintenance-free	•	•	•
Engine Block Heater	○	○	○
Exhaust System — Single rear with Bright tip	•	•	•
Front-Wheel Drive (FWD)	•	•	•
Fuel Door — Capless fuel fill	•	•	•
Fuel Tank — 13.2-gallon capacity	•	•	•
Steering — Electric power, tilt/telescoping column	•	•	•
Suspension — Normal-duty; front MacPherson suspension with coil springs and twin-tube struts with KONI® FSD technology and stabilizer bar; rear twist-beam axle with coil springs and twin-tube shock absorbers with KONI FSD technology	•	•	•
EXTERIOR FEATURES			
Body-side Molding — Body-color with Matte Black insert	•	—	—
— With Satin insert	—	•	—
— With Chrome insert	—	—	•
— Lower sill and wheel arch accent moldings in Nero (Black)	—	•	—
Door Handles — Chrome	•	•	•
Fascias (front) — Body-color	•	—	•
— Body-color with rugged design, Satin Silver accent and logo	—	•	—
— Body-color grille with Chrome accent and logo	•	—	•
Fascias (rear) — Body-color	•	—	•
— Body-color with rugged design, Satin Silver accent	—	•	—
Glass — Deep-tint, sunscreen	•	•	•
License Plate Bracket — Front	○	○	○
Lighting — Bifunctional halogen projector headlamps	•	•	•
— Daytime running lamps	•	•	•
— Cornering front fog lamps	—	•	•
— Chrome headlamp bezels	•	•	•
Mirrors — Power heated, adjustable, foldaway with spotter mirrors in body color	•	•	—
— Power heated, adjustable, foldaway with spotter mirrors in Chrome	—	—	•
— Roof-color exterior mirror when equipped with White or Black roof	○	○	—
Roof — Nero (Black) includes roof-color exterior mirrors; mirrors remain Chrome on Lounge models (available with Grigio Chiaro, Bronzo Metallizzato, Blu Denim, Rosso, Bianco, Giallo, Arancia Pastello and Blue Tornado)	○	○	○
— Bianco (White) includes roof-color exterior mirrors; mirrors remain Chrome on Lounge models (available with Verde Bosco Perla, Nero, Blu Denim, Rosso, Giallo, Grigio Scuro and Blue Tornado)	○	○	○
Sunroof — Power dual-pane panoramic glass with vent and one-touch express open; includes sun visors with illuminated vanity mirrors	—	○	○
Tires — 205/55R16 BSW All-Season	•	—	—
— 225/45R17 BSW All-Season	—	•	•
— Tire Service Kit	•	•	•
— Compact spare	○	○	○
Wheels — 16-inch aluminum	•	—	—
— 17-inch aluminum	—	•	—
— 17-inch Ecoreflex Gloss painted aluminum	—	—	•
— 17-inch machined aluminum with White painted pockets (requires Bianco exterior color or Bianco roof)	—	—	○
Windows — Power front and rear with one-touch up/down	•	•	•
— Rear window defroster	•	•	•
Wipers — Front wipers, variable/intermittent	•	•	•
— Rear wiper/washer, intermittent	•	•	•

	POP	TREKKING	LOUNGE
INTERIOR FEATURES			
Armrest — Vinyl-wrapped with storage	•	•	•
— Fold-down rear armrest with cup holder (included with leather-trimmed seats)	—	•	•
Assist Handles — Front and rear with coat hooks	•	•	•
Cargo Area — Multi-position rear cargo shelf panel	•	•	•
— Rear cargo-area lamp	•	•	•
Climate Control — Air conditioning	•	•	—
— Automatic Temperature Control with Dual-Zone controls (packaged with Premium Group and Popular Equipment Group)	P	P	•
Console — Front center floor with armrest and redesigned cup holders and parking brake	•	•	•
Electronic Vehicle Information Center — Driver-selectable with trip computer, outside temperature, average fuel economy, distance-to-empty, low fuel, service interval and driving range	•	•	•
Floor Mats — Front and rear	•	•	•
Instrument Panel — Embossed Silver vinyl-wrapped with fabric-like appearance	•	—	—
— Textured painted	—	•	—
— Wrapped with leather-like appearance	—	—	•
Lighting — Ambient LED	—	•	•
— Front reading/map lamps	•	•	•
Mirrors — Rear-passenger observation mirror (not available with sunroof)	•	•	•
— Sun visors with illuminated vanity equipped with power dual-pane sunroof	—	○	○
— Rearview manual day/night adjust	•	•	—
— Rearview auto-dimming (packaged with Popular Equipment Group)	P	P	•
Power Outlet — 12-volt	•	•	•
Seating — Premium cloth low-back bucket	•	—	—
— Premium leather-trimmed bucket	—	•	•
Seats (front) — Driver and front-passenger height adjuster	•	•	•
— Power two-way driver lumbar adjuster (packaged with Popular Equipment Group and Premium Group)	P	P	•
— Manual two-way front-passenger lumbar adjuster (packaged with Popular Equipment Group)	—	P	•
— Heated front seats	—	•	•
— Front-seat back map pockets	•	•	•
Seats (rear) — 60/40 split-folding with Tilt, Tumble & Slide function	•	•	•
— Three headrests	•	•	•
— Armrest with cup holder	—	•	•
Shift Knob — Black, leather-wrapped with Chrome accent	•	•	•
Speedometer — 150-mph primary	•	•	•
Steering Wheel — Leather-wrapped with audio and cruise controls	•	•	•
Storage — Front-passenger instrument-panel cubby bin and concealed compartment	•	•	•
— Front-passenger glove box with dampened door	•	•	•
UCONNECT®			
Apple CarPlay™ and Android Auto™ — Compatible with Uconnect 4 with 7-inch display and Uconnect 4 NAV with 7-inch display	•	•	•
Integrated Voice Command ³ with Bluetooth® for hands-free ¹ communications and streaming audio	•	•	•
Remote USB Port — Charging only	•	•	•
SiriusXM® Satellite Radio ⁵ — Includes one-year trial subscription (packaged with Uconnect 4 NAV with 7-inch display; requires Popular Equipment Group or Premium Group on Pop models)	O/P	•	•
SiriusXM Traffic Plus ³ — Includes five-year trial subscription (packaged with Premium Group)	P	•	•
SiriusXM Travel Link ³ — Includes five-year trial subscription (packaged with Premium Group)	P	•	•
Speakers — Six	•	—	—
— BeatsAudio™ Premium Sound System — Includes six premium speakers, eight-inch dual-voice coil subwoofer with trunk-mounted enclosure, eight-channel amplifier with BeatsAudio digital sound processing algorithm (packaged with Premium Group)	O/P	•	•

	POP	TREKKING	LOUNGE
UCONNECT® CONTINUED			
Uconnect 4 with 7-inch display — Includes 7-inch touchscreen display, Integrated Voice Command ¹ with Bluetooth, Bluetooth streaming audio, Apple CarPlay ¹ and Android Auto ² compatible, and AM/FM radio	*	—	—
Uconnect 4 NAV with 7-inch display — Includes 7-inch touchscreen display, GPS navigation, Integrated Voice Command ¹ with Bluetooth, Bluetooth streaming audio, Apple CarPlay ¹ and Android Auto ² compatible, AM/FM radio, SiriusXM Traffic Plus ³ including five-year trial subscription and SiriusXM Satellite Radio ⁵ including one-year trial subscription (packaged with Premium Group)	P	*	*

SAFETY & SECURITY			
Active Head Restraints ¹ — Front seats	*	*	*
Air Bags ² — Advanced multistage driver and front-passenger	*	*	*
— Supplemental front and rear side-curtain	*	*	*
— Supplemental front seat-mounted side (pelvic-thorax)	*	*	*
— Driver's-side knee bolster	*	*	*
BeltAlert — Passenger seat	*	*	*
Brake System — Antilock four-wheel disc	*	*	*
Child Seat Anchor System — LATCH-ready	*	*	*
Electronic Roll Mitigation	*	*	*
Electronic Stability Control ⁷	*	*	*
Hill Start Assist	*	*	*
ParkSense ⁸ Rear Park Assist System ³ (packaged with Popular Equipment Group and Premium Group)	P	P	*
ParkView ⁹ Rear Back-Up Camera ¹	*	*	*
Remote Keyless Entry with two key fobs	*	*	*
Security Alarm	*	*	*
Sentry Key ¹⁰ Engine Immobilizer — Theft-deterrent system	*	*	*
Tire Pressure Monitoring System with display	*	*	*

GROUPS/PACKAGES			
Popular Equipment Group — Includes power two-way driver lumbar adjuster, rearview auto-dimming mirror, Dual-Zone Automatic Temperature Controls, ParkSense Rear Park Assist ¹ ; additional for Trekking models includes manual two-way passenger lumbar adjuster (requires SiriusXM ⁸ Satellite Radio ⁵ on Pop models; not available with Premium Group on Pop models)	○	○	—
Premium Group — Includes power two-way driver lumbar adjuster, rearview auto-dimming mirror, Dual-Zone Automatic Temperature Controls, ParkSense Rear Park Assist ¹ , BeatsAudio Premium Sound System including subwoofer, Uconnect [®] 4 NAV with 7-inch touchscreen display plus GPS navigation, Apple CarPlay [™] , Android Auto [™] , ¹² SiriusXM Satellite Radio ⁵ including one-year trial subscription and SiriusXM Traffic Plus ³ and SiriusXM Travel Link ⁵ including five-year trial subscription	○	—	—
Urbana Appearance Package — Includes Nero (Black) roof with matching exterior mirrors and 17-inch Black aluminum wheels; available in limited exterior color options	—	○	—

* = Standard. ○ = Optional. P = Available within Package. — = Not available.



16-INCH ALUMINUM
Standard on Pop



17-INCH ALUMINUM
Standard on Trekking



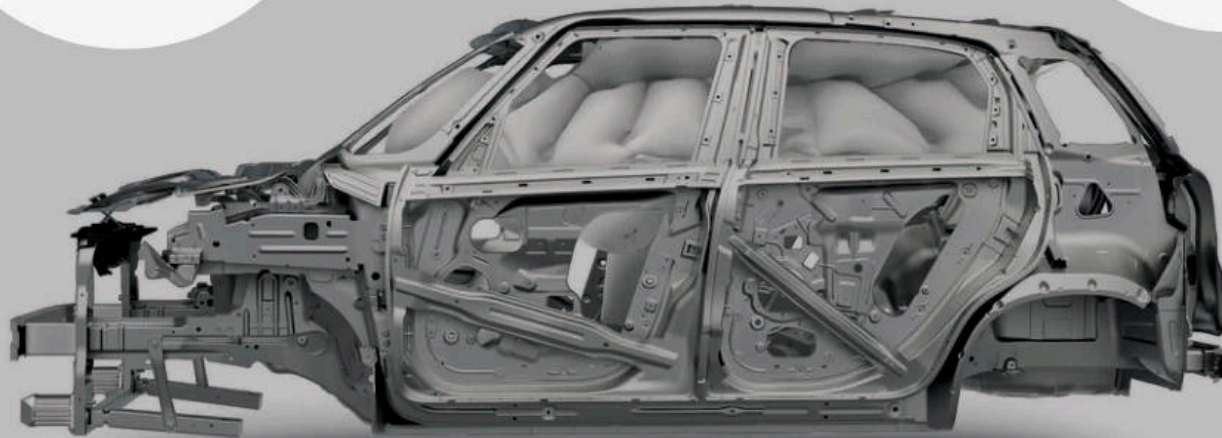
17-INCH ECOREFLEX GLOSS
PAINTED ALUMINUM
Standard on Lounge



18-INCH MACHINED ALUMINUM
WITH WHITE PAINTED POCKETS
Available on Lounge in Bianco
or with Bianco roof

**PARKVIEW® REAR
BACK-UP CAMERA¹**

**PARKSENSE® REAR PARK
ASSIST SYSTEM³**



**ELECTRONIC STABILITY
CONTROL (ESC)⁷**

ON GUARD

- Seven Standard Air Bags¹²
- Electronic Roll Mitigation
 - Hill Start Assist
- Remote Keyless Entry

Here are just some of the advanced features that will offer peace of mind:

PARKVIEW® REAR BACK-UP CAMERA³ provides a wide-angle view of the area immediately behind the vehicle, giving the driver greater peace of mind before moving backwards at low speeds. It displays dynamic grid lines on a color touchscreen to aid the driver when the vehicle is in Reverse. Standard.

PARKSENSE® REAR PARK ASSIST SYSTEM³ can help you park and back out with grace. When the vehicle is in Reverse, these sensors detect objects in the rear back-up pathway and also provide an audible and visual warning so you have time to react. Available.

SEVEN STANDARD AIR BAGS¹² surround you with a comprehensive air bag¹² system. It features full-length front and rear side-curtain, driver's inflatable knee blocker, seat-mounted side for front occupants, and advanced multistage driver and front-passenger air bags,¹² all working together to help provide encompassing protection. Standard.

ACTIVE HEAD RESTRAINTS¹¹ Head restraints are standard features designed to reduce the risk of injury by restricting head movement in the event of a rear impact. Head restraints should be adjusted so that the top of the head restraint is located above the top of your ear. Standard.

ELECTRONIC STABILITY CONTROL (ESC)⁷ is designed to assist drivers in maintaining control of their vehicles during extreme steering maneuvers. ESC⁷ senses when a vehicle is starting to spin (oversteer) or plow (understeer) and attempts to correct the vehicle's course by automatically controlling the throttle and applying the brakes to individual wheels. Standard.

ELECTRONIC ROLL MITIGATION (ERM) employs ESC⁷ sensors to anticipate potential risk situations. If things get rough, ERM takes immediate action to help you maintain stability and remain under control. Standard.

HILL START ASSIST Especially helpful when the grades are steep, this feature maintains brake pressure during the moments the driver lifts the foot off the brake and engages the gas pedal to gain forward momentum — for a smooth start every time. Standard.

REMOTE KEYLESS ENTRY This feature allows you to lock and unlock the vehicle's door(s) and liftgate by pressing and releasing the Remote Keyless Entry transmitter fob LOCK or UNLOCK buttons — from distances of up to 66 feet. The turn signal lights will flash to acknowledge the unlock, the horn will chirp when locked. Standard.

TIRE PRESSURE MONITORING SYSTEM

This feature takes the guesswork out of deciding if your tires are at optimum fill level. It provides crucial, pinpointed information on your Electronic Vehicle Information Center (EVIC) at the moment tire pressure falls below the safe driving level on any tire. Standard.

(1) Apple CarPlay uses your smartphone's data plan. Additional charges may apply. To use Apple CarPlay, you must be in an area with cellular coverage. (2) Android Auto uses your smartphone's data plan. Additional charges may apply. To use Android Auto, you must be in an area with cellular coverage. Requires the Android Auto app on Google Play and an Android-compatible smartphone running Android 5.0 Lollipop or higher. (3) Always look before proceeding. An electronic drive aid is not a substitute for conscientious driving. Always be aware of your surroundings. (4) Requires a mobile phone equipped with the Bluetooth Hands-Free Profile. Visit UconnectPhone.com for system and device compatibility. (5) SiriusXM audio and data services each require a subscription sold separately or as a package by SiriusXM Radio Inc. Your SiriusXM service will automatically stop at the end of your trial unless you decide to subscribe. If you decide to continue service after your trial, the subscription plan you choose will automatically renew thereafter and you will be charged according to your chosen payment method at then-current rates. Fees and taxes apply. To cancel, you must call SiriusXM at 1-866-635-2349. See SiriusXM Customer Agreement for complete terms at www.siriusxm.com. All fees and programming subject to change. Not all vehicles or devices are capable of receiving all services offered by SiriusXM. Current information and features may not be available in all locations or on all receivers. (6) Remote Vehicle Start not available on all vehicles. You are responsible for using remote features in accordance with any laws, rules or ordinances in effect wherever you operate your vehicle. (7) No system, no matter how sophisticated, can repeal the laws of physics or overcome careless driving actions. Performance is limited by available traction, which snow, ice and other conditions can affect. When the ESC warning lamp flashes, the driver needs to use less throttle and adapt speed and driving behavior to prevailing road conditions. Always drive carefully, consistent with conditions. Always wear your seat belt. (8) Be sure to follow all instructions in Owner's Manual for removal of top and doors, and lowering of windshield. Driving with doors off and windshield down is for off-road use only. (9) Siri Eyes Free requires an iPhone equipped with Siri. Certain features not available while the vehicle is in motion. iPhone must be within active cellular range. Customer's existing iPhone data rates apply to Internet-supported features. (10) Voice Text Reply and Voice Texting features require a compatible mobile device enabled with Bluetooth Message Access Profile (MAP). iPhone and some other smartphones do not currently support Bluetooth MAP. Visit www.UconnectPhone.com for system and device compatibility. Ensure MAP is ON and incoming message notification is enabled. Vehicle must be registered for Uconnect Access and you must fulfill minimum subscription requirements. Also requires the use of a compatible smartphone that supports text messaging and Bluetooth. Check UconnectPhone.com for device compatibility. (11) Always sit properly with the head restraint properly adjusted. Never place anything in front of the head restraint. (12) The Advanced Front Air Bags in this vehicle are certified to the new U.S. Federal regulations for Advanced Air Bags. Children 12 years old and younger should always ride buckled up in a rear seat. Infants in rear-facing child restraints should never ride in the front seat of a vehicle with a passenger front air bag. All occupants should always wear their lap and shoulder belts properly. (13) Always check visually for vehicles prior to changing lanes. (14) This system is not intended to avoid collisions on its own, nor can FCW detect every type of potential crash. The driver must remain aware of traffic conditions and be prepared to brake and steer to avoid potential collisions at all times. (15) This system is a driver convenience system, not a substitute for active driver involvement. The driver must remain aware of traffic conditions and maintain control of the vehicle. (16) Transferable. See dealer for details and a copy of the limited warranty. Includes towing to an authorized dealer.

©2017 FCA US LLC. All Rights Reserved. FIAT is a registered trademark of FCA Group Marketing S.p.A., used under license by FCA US LLC. Mopar, LaneSense, ParkSense, ParkView, Sentry Key, Tigershark and Uconnect are registered trademarks, and Keyless Enter 'n Go is a trademark of FCA US LLC. The 500L design and the 500X design are registered trademarks of FCA Italy S.p.A., used under license by FCA US LLC.

MultiAir is a registered trademark of C.R.F. Società Consortile per Azioni, used under license by FCA US LLC. Apple CarPlay is a trademark and iOS, iPad, iPhone, iPod, iTunes and Siri are registered trademarks of Apple Inc. Dr. Dre, Beats, BeatsAudio and the b logo are trademarks of Beats Electronics, LLC. Bluetooth is a registered trademark of Bluetooth SIG, Inc. Facebook is a registered trademark of Facebook Inc. Google, Google+, Android, Android Auto, YouTube logo and other marks are trademarks of Google Inc. Instagram is a registered trademark of Instagram, Inc. KONI is a registered trademark of KONI North America. Pinterest is a registered trademark of Pinterest, Inc. SIRIUS, XM and all related marks and logos are trademarks of SiriusXM Radio Inc. and its subsidiaries. Tumblr is a registered trademark of Tumblr, Inc. The Twitter name, logo, Twitter T, Tweet and Twitter bird are trademarks of Twitter, Inc. in the United States and other countries.

This brochure is a publication of FCA US LLC. All product illustrations and specifications are based upon current information at the time of publication approval. FCA US LLC reserves the right to make changes from time to time, without notice or obligation, in prices, specifications, colors and materials, and to change or discontinue models which are considered necessary to the purpose of product improvement or for reasons of design and/or marketing.