

Pure Driving Passion



2012 Fisker Karma

**The World's
First High
Performance
Electric Luxury
Vehicle With
The Freedom
To Plug In Or
Fill Up.**

**Responsible
Luxury**

Finally, sustainable design
without compromise.
Introducing the Fisker
Karma, the first true
electric luxury vehicle
with extended range.

Performance

High impact
performance,
low impact on the
environment. 403
horsepower, a 300 mile/
483 km extended
range (EVer™) and
100 MPG/160 km
achievable.

Freedom

The freedom to plug in
or fill up. Choose all
electric Stealth Mode or
fuel assisted Sport Mode
with a simple shift of
the paddle.





Extended Range

Introducing the world's first electric luxury vehicle with extended range.

EVER™ stands for Electric Vehicle extended range, meaning Fisker drivers can either recharge or refuel to enjoy complete driving freedom.

The Karma's powertrain uses the internal combustion engine (ICE) in series with a generator and the Lithium-ion battery to power the electric motors that turn the rear wheels — giving up to 50 mi/80 km of electric driving. After that, the internal combustion

engine engages to generate energy for the electric motors, providing up to an additional 250 mi/400 km of range.

Solar Roof

The world's largest seamless solar glass roof for a production vehicle provides Karma drivers up to 200 miles (321 km) per year of completely emission- and cost-free driving. A dynamic splayed pattern was

developed to improve efficiency by optimizing maximum sunlight angles. This unique solar roof also produces energy to help power the Karma's interior cooling system.





**A Design
Philosophy
Inspired By
Nature.**

The Elements

From the elegant lines of windswept sand dunes to the muscular grace of a tiger, the Fisker Karma's design was inspired by the natural world and the beauty that surrounds it.

Water-Based Paint

Diamond Dust™ is the first ever high-ratio glass flake paint used on a production vehicle. The 35%-55% recycled glass flake mixture releases zero volatile organic compounds into the atmosphere.

Reclaimed Wood

The interior wood trim is crafted from certified Fallen, Sunken and Rescued Wood™, ensuring that no live growth is ever used.



Performance

The Karma's lightweight aluminum spaceframe and load-leveling shock absorbers deliver nimble handling and responsive driving dynamics. Paired with dual-electric motors capable of producing up to 959 ft-lb (1300 Nm)

torque, the Fisker Karma defines a new era of electric exhilaration.

Driving Modes

The Karma features two driving modes: Stealth Mode for relaxed and efficient electric driving and Sport Mode to access the vehicle's full power.

Stealth Mode

- Top speed 95 mph (153 km/h)
- Total range of up to 50 miles (80 km)

Sport Mode

- Top speed 125 mph (200 km/h)
- 0-60 mph in 6.3 seconds
- Total range of up to 250 miles (400 km)





Suspension

The Fisker Karma combines sports car suspension, lightweight materials, innovative packaging and tuning that results in flat cornering without the need for complex subsystems.

In addition, a low center of gravity, low roll gain, high roll damping and linear steering input buildup give

the Fisker Karma neutral handling response. Suspension kinematics ensures uniform tire footprint pressure distribution during roll.

Brakes

The Fisker Karma uses an integrated braking system that combines traditional friction-based brakes with regenerative technology. Regenerative braking recovers kinetic energy during deceleration and feeds it back into the battery.

Electro-hydraulic actuated friction brakes

are controlled by a brake-by-wire system with push-through override for added safety.

World class components include: Brembo® Monobloc 6-piston calipers with massive 370 x 34 mm floating directionally ventilated front rotors and 4-piston calipers with 365 x 28 mm single-piece directionally

ventilated rear rotors. The monobloc design virtually eliminates any flex in the brake calipers for the best in braking performance.



**Refueling
Optional.**

**50 Miles All
Electric**

Driving in all electric
Stealth Mode provides
a total range of up to
50 miles/80 km. Most
people travel less than
35 miles/56 km per day.

EVER™

EVER technology uses
an electric generator
and battery pack to
power dual-electric
motors without using
gas to drive the wheels.

100 MPG

The patented Fisker
EVER technology allows
an extended range of
up to 300 miles/483 km
and 100 MPG/160 km
achievable.



Command Center

Fisker designers chose to simplify the car's dashboard controls by providing a single place to control multiple features. The Karma's dashboard contains just four buttons: Power (start/stop), Central Locking, Hazard Lights and Electric Glove Box Release.

An intuitive touchscreen interface controls the Karma's climate, premium audio, navigation, iPod™ control and Bluetooth® phone compatibility without the complex toggles and switches found in other premium luxury vehicles. The elegant, one piece design of the Command Center reflects Fisker's attention

to detail — a chrome bezel surrounds the flat screen glass surface, echoing the jewel-like quality of the instrument gauge cluster.

- Task specific visuals
- Haptic feedback touch responses
- Vibrant 10.2" touchscreen
- Contextual application displays

- Rear-view camera display (EcoSport, EcoChic)
- Solar roof energy capture display
- Environmental visualization options relative to Date/Time/ Location
- Quick, intuitive transitions between tasks/modes
- Variable engagement modes; accommodate user skill levels



• Deep Sunken White Oak.



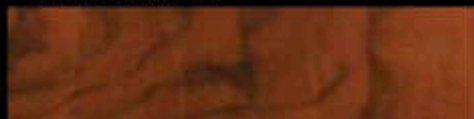
• Fallen Mahogany.



• Sunken White Oak.



• Rescued Walnut Burl.



Interior Wood Trim

The Karma's cabin is the perfect example of a dedication to the use of reclaimed, recycled and reusable materials enhanced with modern technology. Three types of interior wood trim are available in the Karma, all sourced from reclaimed lumber. No live growth is ever used.

Rescued Wood™

Certified Rescued Wood sourced from the 2007 California wildfires in Orange County; walnut, pure grain finished naturally.

Sunken Wood™

Certified Sunken Wood retrieved from the bottom of Lake Michigan as a result of the logging industry in the late 1800s.

Fallen Wood™

Certified Fallen Wood sourced from old growth trees felled by California storms; mahogany, pure grain finished naturally.

- EcoChic
- EcoSport
- EcoStandard



• Leather

Treated at the world's first energy self-sufficient, closed-loop leather manufacturing plant with both gas and electricity generated on-site from by-products of the leather making process.

- Low pigmentation
- Chrome free
- One of the highest yields in the industry minimizing waste

• EcoSuede

100% recycled post-industry virgin polyester ultrasuede reduces energy consumption and CO₂ emissions by 80% during the recycling process.

Ultrasuede® EcoDesign™ products deliver on the promise of excellence through environmental responsibility, inherently beautiful design and flawless engineering.

Exterior Sound

Fiskar Hybrid HZ exterior speakers emit a futuristic sound to warn approaching pedestrians/traffic.

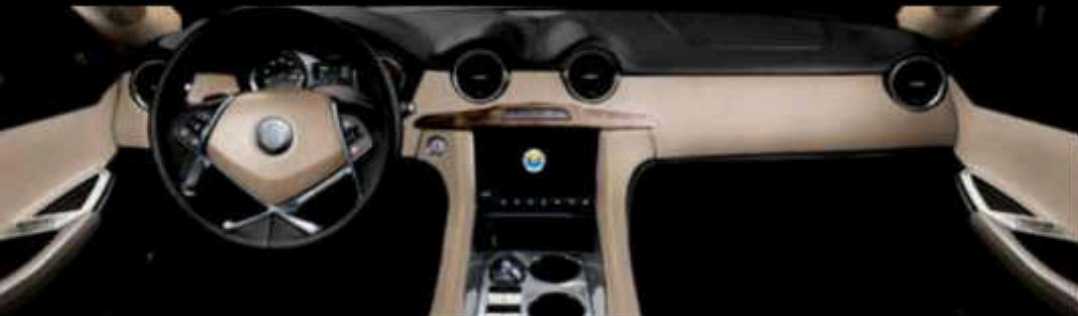
Interior Sound

Premium audio system including:

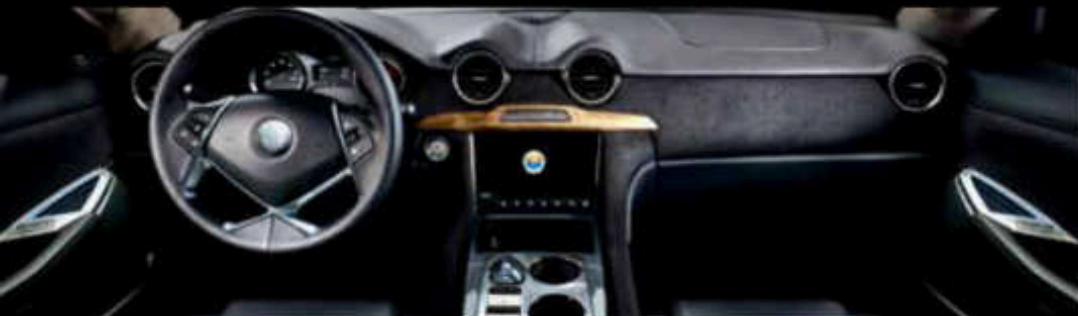
- Four channel, six speaker configuration (EcoStandard)
- Six channel, eight speaker configuration with subwoofer (EcoSport, EcoChic)
- SiriusXM® Satellite Radio ready
- Bluetooth® handsfree phone compatibility

- AM/FM/MP3/USB/AUX Connectivity/Satellite
- Steering wheel audio and handsfree controls
- Voice activated handsfree navigation (EcoSport, EcoChic)

Interior Colors



• Monsoon Tri-Tone™



• Black Sand Monotone™



• Glacier Tri-Tone™



- EcoChic
- EcoSport



● Canyon Tri-Tone™



● Dune Monotone™



● Earth Tri-Tone™



Exterior Colors



Eclipse™



Silver Wind™



Inferno™



Deep Ocean™



- EcoChic
- EcoSport
- EcoStandard



White Sand™



Earth™



Laguna™



Shadow™



Specifications

		EcoStandard	EcoSport	EcoChic			EcoStandard	EcoSport	EcoChic
Ever™ "Electric Vehicle extended range" Powertrain									
Type	Ever - Electric Vehicle extended range	•	•	•	Suspension				
Drive	Rear Wheel Drive (RWD) dual-electric traction motors	•	•	•	Suspension Type	4-wheel independent suspension with Short-Long Arm (SLA) architecture	•	•	•
Electric Motors Torque	659 ft-lbs/1300Nm (2 x 479 ft-lbs/652Nm)	•	•	•	Front	Microtube coil-over with aluminum control arms and stabilizer bar	•	•	•
Battery Type	Mid-mounted lithium ion battery pack w/ Nanophosphate™ technology	•	•	•	Rear	Load-leveling coil-over with aluminum control arms and stabilizer bar	•	•	•
Battery Capacity	20.1 kWh	•	•	•	Ground Clearance	5.6/142 (in/mm)	•	•	•
Battery Voltage	339V Nominal	•	•	•	Steering Type	Rack and pinion with variable speed, electro-hydraulic power assist	•	•	•
Charger	3.3 kWh on-board charger w/ 120V and 240V capability	•	•	•	Steering Ratio	Variable 14.5:1 to 16.1:1	•	•	•
Range-Extending Engine	2.0L turbocharged direct injection 4-cyl gasoline engine	•	•	•	Steering Turns Lock-to-Lock	2.7 turns	•	•	•
Transmission	Single-ratio with limited slip differential	•	•	•	Turning Circle Curb-to-Curb	40.4/12.3 (ft/m)	•	•	•
Final Drive Ratio	4.1	•	•	•	Turning Circle Wall-to-Wall	41.1/12.5 (ft/m)	•	•	•
Solar Roof	Full length solar roof for extended range	•	•	•	Brakes				
EPA Fuel Economy									
Driving Range (Electric)	Up to 50 miles/80 kilometers	•	•	•	Front	Brembo® 370x34mm 2-piece rotors w/ 6-piston calipers	•	•	•
Driving Range (Total)	Up to 300 miles/483 kilometers	•	•	•	Rear	Brembo® 365x28mm single piece rotors w/ 4-piston calipers	•	•	•
Electric Vehicle Supply Equipment	120V Convenience Cord - Standard, 240V Wall Unit & Cord (Optional)	•	•	•	Regenerative	Blended regenerative braking system with Hill Mode for increased efficiency	•	•	•
Performance									
Top Speed (Limited)	125 mph/200 kph	•	•	•	Parking	Electrically actuated rear parking brake	•	•	•
Acceleration 0-60 mph	6.3 sec (Sport Mode)	•	•	•	Wheels/Tires				
Drag Coefficient	0.313 Cd	•	•	•	Front	22x8.5" Circuit Blade™ aluminum wheels w/ 255/35VR22 tires	•	•	•
Body Torsional Stiffness	34,000 Niv/degree	•	•	•	Rear	22x9.5" Circuit Blade™ aluminum wheels w/ 285/35VR22 tires	•	•	•
Key Safety Features									
Total Airbags	8 total airbags: two-stage driver/passenger airbags with separate knee airbags, Full length side curtain and seat side airbags	•	•	•	Winter Option	21x8.5" with 245/40 VR 21 (front) and 21x9.0" with 265/40 VR 21 (rear) winter wheels and tires	•	•	•
Construction	Proprietary aluminum frame with front and rear crush zones and side impact protection	•	•	•	Exterior Dimensions				
Brakes	Antilock Brake System (ABS) w/ Panic Brake Assist	•	•	•	Wheelbase	124.4/3160 (in/mm)	•	•	•
Dynamic Safety	Electronic Stability Control (ESC) w/ Traction Control System (TCS)	•	•	•	Overall Length	196.8/4998 (in/mm)	•	•	•
Child Seating	Lower Anchors and Tethers for Children (LATCH) in passenger and rear seats	•	•	•	Overall Width (mirrors included)	64.0/1626 (in/mm)	•	•	•
Battery Awareness	Automatic battery disconnect	•	•	•	Overall Height	52.4/1330 (in/mm)	•	•	•
	Signature Fiskar external sound	•	•	•	Front Track	66.0/1692 (in/mm)	•	•	•
		•	•	•	Rear Track	67.0/1701 (in/mm)	•	•	•
		•	•	•	Front Overhang	35.9/913 (in/mm)	•	•	•
		•	•	•	Rear Overhang	36.4/925 (in/mm)	•	•	•
Key Comfort & Convenience Features									
Fiskar Command Center™	10.2" multifunction haptic touchscreen	•	•	•	Interior Dimensions				
Standard Audio System	100 watts, 6 speakers, 4 channels	•	•	•	Seating Capacity	4	•	•	•
Premium Audio System	295 watts, 8 speakers including subwoofer, 6 channels	•	•	•	Headroom, Front	38.3/973 (in/mm)	•	•	•
Audio Inputs	AM, FM, MP3, USB, and AUX audio inputs, SiriusXM® Radio Ready (North America)	•	•	•	Headroom, Rear	35.7/908 (in/mm)	•	•	•
Communications	Bluetooth® handsfree phone compatibility	•	•	•	Legroom, Front	42.6/1083 (in/mm)	•	•	•
Climate Control	Dual-zone automatic air conditioning with heated front and rear seats	•	•	•	Legroom, Rear	31.4/798 (in/mm)	•	•	•
Seating	6-way power front seats with lumbar adjustment and memory	•	•	•	EPA Passenger Volume, Front	53.8/1324 (ft³/liters)	•	•	•
Lighting	Bi-Xenon headlamps with LED interior lighting	•	•	•	EPA Passenger Volume, Rear	35.0/991 (ft³/liters)	•	•	•
Mirrors	Auto-dimming rear and side view mirrors	•	•	•	Luggage Compartment Volume	6.9/195 (ft³/liters)	•	•	•
Controls	Steering wheel mounted audio and phone controls	•	•	•	EPA Passenger Car Volume	95.7/2710 (ft³/liters)	•	•	•
Accessibility	Keyless ignition with push-button start, HomeLink® (North America)	•	•	•	Capacities				
Navigation	Voice activated, handsfree with turn-by-turn directions	•	•	•	Fuel Tank	9.0/35.7 (US gal/L)	•	•	•
Rear View Camera	Trunk lid mounted standard rear view camera	•	•	•	Curb Weight	5300/2404 (lbs/Kg)	•	•	•
Leather Interior	Low pigmentation, high yield	•	•	•	Weight Distribution	47/53 (F/R %)	•	•	•
EcoSuede Interior	100% post-industrial textile	•	•	•					

Environmental Commitment.

NEW LEAF PAPER®
**ENVIRONMENTAL
BENEFITS STATEMENT**
*of using post-consumer waste
fiber vs. virgin fiber*

Fisker Automotive saved the following resources by using 36690 pounds of Reincarnation Matte, made with 100% recycled fiber and 60% post-consumer waste, processed chlorine free, designated Ancient Forest Friendly™ and manufactured with electricity that is offset with Green-e® certified renewable energy certificates.

237	Trees
108668	Gallons of Water
75	Million BTUs of Energy
6598	Pounds of Solid Waste
22563	Pounds of Greenhouse Gases

Calculations based on research by Environmental Defense and other members of the Paper Task Force.

www.newleafpaper.com

 ANCIENT FOREST FRIENDLY™  NEW LEAF PAPER
100% recycled cell and glass 



MIX
Paper from
responsible sources
FSC® C102835

This brochure is a limited print.

Warranty.

New Vehicle Limited
Bumper to Bumper
Warranty is 50 months or
50,000 miles for U.S.

Letter of Authenticity.

All Fisker Karma owners
receive certificates
documenting the authenticity
of the wood featured
throughout the interior.

Service.

Service available at
authorized Fisker locations.

Legal

©2011 Fisker Automotive,
Inc. The Fisker name,
model names, and logo are
registered trademarks. All
rights reserved.

Each copy of these
materials must retain
all copyright and other
proprietary notices
contained therein. The
text, images and any other
content are the property of
Fisker Automotive, Inc. and
subject to copyright and
other intellectual property
protection. Furthermore,
The Fisker name, model
names and logo are
registered trademarks.
These trademarks and
other Fisker banners,
logos, service marks,
design marks and any
other intellectual property
belonging to the company,
may not be modified, and
they may not be used,
copied or distributed in any
way except as an integral
part of an authorized copy
or transmission of material
in these brochure pages.
No license to any Fisker
Automotive, Inc. intellectual
property has been granted
by this brochure. No
other use, copying or
transmission, in whole or
in part, of any material
may be made without

the express prior written
permission of Fisker
Automotive, Inc.

The information in these
brochure pages is intended
for representatives of the
media and customers only
and is provided 'AS IS'
WITHOUT WARRANTY
OF ANY KIND, EITHER
EXPRESSED OR
IMPLIED, INCLUDING,
BUT NOT LIMITED
TO, WARRANTIES OF
MERCHANTABILITY,
FITNESS FOR A
PARTICULAR PURPOSE
OR NON-INFRINGEMENT
OF THIRD PARTY RIGHTS.
In no event shall Fisker
Automotive, Inc. be
liable to any person for
any special, indirect or
consequential damages
relating to this material.

Fisker Automotive, Inc.
will, subject to legal
requirements, determine
the Model Year designation
of its vehicles. The Model
Year designation on any
particular model may
be longer or shorter
than twelve months.
Some vehicles pictured
may contain non-U.S.
equipment. Some models
may be shown with
optional equipment.
All of the information

contained in this brochure
is for information purposes
only and in no way
constitutes an offer to buy
or sell Fisker vehicles. The
purchase of any Fisker
vehicle shall be subject to
the terms and conditions of
the applicable sale, lease
or financing contract.

Fisker Automotive, Inc.
may at any time change
this information. Customers
are bound by any such
revisions and therefore
should periodically visit
fiskerautomotive.com to
review the then-current
website information.

While Fisker Automotive,
Inc. makes all reasonable
efforts to provide
accurate information in
this brochure, there is no
guarantee or warranty of
accuracy. Furthermore,
we do not assume any
liability for the accuracy
or completeness of
information presented in
this brochure.

Any rights not expressly
granted herein are
reserved.



Pure driving passion